



line  
rts  
A  
4  
30  
5

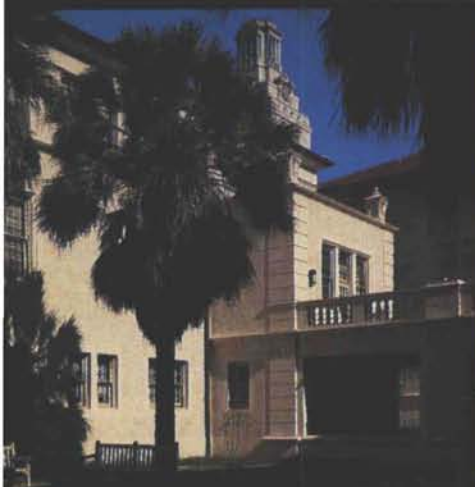
# New Mexico ARCHITECTURE

SEPTEMBER/OCTOBER 1989

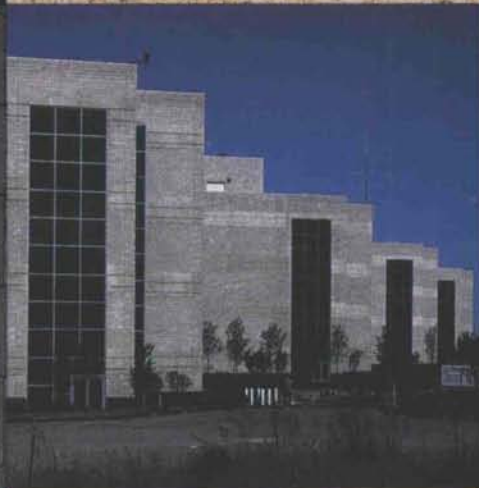
\$3.00



# THE GREAT WALL



Great architectural accomplishments are never forgotten. That's why great architects specify Texas Quarries Cordova and Lueders limestone for its proven performance against extreme temperature changes and resistance to the elements. It's a blend of rock solid strength and hand-tooled craftsmanship. Goldsmith Hall Architectural Bldg., Univ. of Texas, Austin is a beautiful example of the unlimited options in creativity using Cordova Cream and Cordova Shell limestone.



The 3M Company Research and Development Lab and Office Bldg. - Austin Center features Featherlite's Burnished Masonry Units . . . a ground face that gives an exposed aggregate finish which adds that technical sophistication. The elegance of simplicity and ease of workmanship are two strong reasons to specify "Burnished" for your next great wall.

The Hypermart-Garland, Texas is Sam Walton's newest development and gleams with Spectra Glaze® block in midnight blue. The architect chose Spectra Glaze® as an economical exterior material with unique qualities, performance and design flexibility. Architects have specified Spectra Glaze® for its highly satisfactory performance for over 35 years.



The Great Wall . . . a blend of creative craftsmanship, rock solid strength, ease of workmanship and great building products that never disappoint you.

*Builders*  
**BLOCK Co.**

**FEATHERLITE**

Builders Block Co.  
P. O. Drawer FF,  
Las Cruces, NM 88004  
(505) 524-3633  
P. O. Box 1633, Roswell, NM 88003  
(505) 622-1321





• vol. 30 no. 5 •

The "staff" of **New Mexico Architecture** magazine wishes to offer its congratulations to Antoine Predock, FAIA, for being honored by Governor Garrey Carruthers on November 2nd. Tony was among the five recipients of the 1989 Governor's Awards for excellence and achievement in the arts.



As **Time** Magazine stated last year, Antoine Predock "is creating a remarkable body of work — tough and sensual, fabulously imagined, altogether persuasive..."



**NMA** extends appreciation to Bob Brazell for the time and effort he expended in making two trips to Cimarron last May to photograph Villa Philmonte. This cover has been graciously sponsored by Davis and Associates, general contractors, Santa Fe and the International State Bank of Ration. We appreciate their support of **NMA**. JPC

# nma

sept. - oct. 1989 • new mexico architecture

☞ The Editor's Column 3

NMA NEWS 9

UNM Names Roger Lujan Director of Facilities Planning

Shaping the University: The UNM Campus since 1960

Villa Philmonte: 10  
Mansion in the Wilderness  
by Stephen Zimmer

Professional Directory 21

Advertisers' Index 22

(Cover—Villa Philmonte Great Room, Cimarron, New Mexico—Bob Brazell Photography, 1989)

—Official Publication of the New Mexico Society of Architects, A.I.A.—

#### Society Officers

President—Wayne Lloyd  
President-Elect—Bill Freimuth  
Secretary—Tomás Méndez  
Treasurer—Michael Beltran  
Director—John Alejandro  
Director—Joe Browning  
Director—David Carr  
Director—Tim Christensen  
Director—Christopher W. Larsen  
Director—Richard R. (Toby) Pugh  
Director—Carlyn Rodahl  
Director—Gregory Wilcox  
Associate Director—Roger Easley  
Executive Director—Sema Wynne

#### New Mexico Architecture - Committee

John P. Conron, FAIA/FASID—Editor  
Carleen Lazzell—Associate Editor/Advertising Director  
Barbara MacPherson—Advertising Assistant  
Christopher Larsen, AIA—Chairman  
Van Dorn Hooker, FAIA—Past Chairman  
George Anselevicius, FAIA  
Terrance J. Brown, AIA  
Marjorie Hooker, AIA  
Carolyn Kinsman, Designer  
Charles E. Nolan, Jr., AIA  
George C. Pearl, FAIA  
Glade F. Sperry, Jr., AIA  
V.B. Price—Architecture Editor, "Artspace"  
Don P. Schlegel, FAIA  
Christopher Wilson, Architectural Historian

International Standard Serial Number—0545-3151

LOOKING FOR AN ARCHITECTURAL ILLUSTRATOR?

Write or call  
Roger Evans  
70 WEST WORKSHOP  
Box 11 Tunnel Springs Rd.  
Placitas, New Mexico 87043  
Phone 505-867-5615

*With Your Imagination  
We Can Create  
Concrete Structures of  
Distinction*

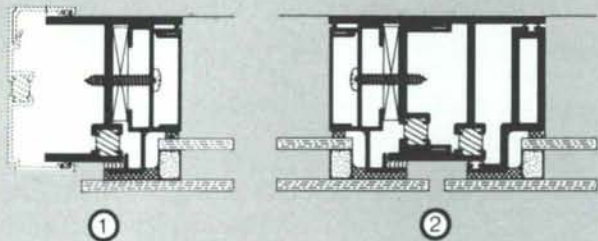
**FLS**  
Ferreri Concrete Structures, INC.

3411 Candelaria, NE • Building 3  
Albuquerque, New Mexico 87107  
(505) 884-1221 FAX (505) 884-1225



Aluminum Windows by  
**EFCO**

**Shadowline**™  
The Key to Hidden Mullions



Represented in New Mexico by



**CURTAINWALL  
WINDOW LIMITED**

P.O. Box 782315  
Wichita, Kansas 67278  
1-800-233-1204  
FAX (316) 262-2696

**ConDeck  
Corporation**



**Perlite Permalite®**  
concrete roof deck  
insulation

Insulation with the Permanence of Concrete

Lightweight and durable

Smooth, Monolithic Surface Sloped to Drain

Excellent Nailable Roofing Base

UL Fire Rated & Non-Combustible

**505-292-6474**

502 General Patch, SE, Albuquerque, NM 87123





*Fifteen-year  
index now  
available for  
volumes 56-60,  
1971-1985*

## *New Mexico Historical Review*

Index—four volumes—  
\$25.00 a set; \$7.00 for  
individual indexes

I 1926-1940

II 1941-1956

III 1956-1970

IV 1970-1985

Add 20 percent to all  
orders for shipping.

Please do not send cash.  
Make check or money  
order payable to:

Printed Quarterly

Individual \$15.00 per year  
(Overseas \$19.00)

Institutions \$18.00 per year  
(Overseas \$23.00)

*New Mexico Historical Review*  
1013 Mesa Vista Hall  
University of New Mexico  
Albuquerque, NM 87131  
(505) 277-5839

Insurance for the Design Professional  
New Mexico's  
Professional Engineers  
and Architects

# Alexander & Alexander

**BONDING &  
INSURANCE**

**Since 1925**

Call Bob Dean, Professional Liability Specialist

**TELEPHONE (505) 883-8282**

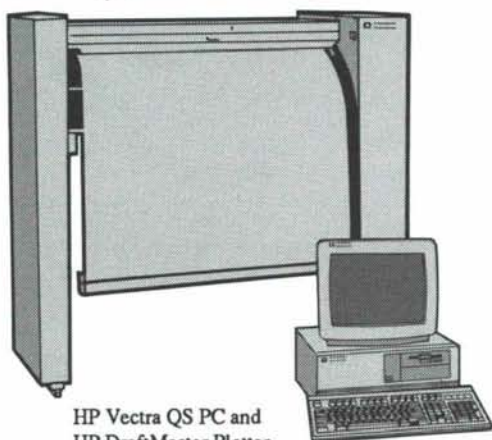
**N.M. WATS 1-800-432-5882**

Suite 200  
6000 Uptown Blvd. NE

P.O. Box A  
Albuquerque, N.M. 87103

**HOLMAN'S**  
*has it!*

## Create a PC-based CAD system as individual as your designs



HP Vectra QS PC and  
HP DraftMaster Plotter

Whatever your design or drafting requirements, HP has a broad line of PC-based CAD hardware products to meet your individual needs.

From PCs, color displays and graphics cards to printers and plotters, HP provides a broad line of CAD products to help you work faster and smarter.

- Reliable, high-performance 80286- and 80386-based HP Vectra PCs
- Superior-quality plotters and printers
- High-resolution 16- and 20-inch displays
- A dependable, high-speed, high resolution graphics card

And because they're fully compatible with industry standards, you can customize your CAD system to meet your specific application.

Come in for a demonstration today.



Quality products for the world of Science, Engineering & Business

**401 WYOMING NE • 265-7981**

VISA • MASTER CARD • AMERICAN EXPRESS

Store Hours: Mon-Fri 8:00 - 5:30 Sat 10:00 - 3:00



THE BOLD LOOK  
OF

KOHLER

Showroom Hours M-F 8:00-5:00  
SAT 8:00-12:00

• **PHC**

SUPPLY COMPANY

1000 Siler Park Road

Santa Fe, NM • Phone 471-1811

• **ACTIVE**

SUPPLY COMPANY

1500 Candelaria NE • Albuquerque, NM • Phone 345-8587

541 Laser Road NE • Rio Rancho, NM • Phone 892-4401



DIVISIONS OF DAHL U.S. HOLDINGS, INC.





# Clear Advantage

*Profile™ Shower.* To get a shower into better shape, look for a better angle. The Profile Shower by Kohler. It gives a bath a spacious, modern look. A clear-cut solution because it can work as a one, two or three-sided shower, in a corner or against a single wall. Profile Shower's heavy tempered-glass doors come in a variety of sizes, with posts and receptor in decorator colors, and all-black gloss hardware. Versatile. Elegant. From all sides, the Profile Shower is a clear improvement.

THE BOLD LOOK  
OF **KOHLER®**



**COMING SOON TO A  
REFERENCE LIBRARY  
SHELF NEAR YOU**

A NEW **El Rey** WALL SYSTEMS  
REFERENCE MANUAL THAT WILL PAY  
FOR ITSELF MANY TIMES OVER

- **YOUR COST** - A phone call and a few minutes of your time.
- **YOUR RETURN ON THE INVESTMENT** - A choice of stucco wall systems, and the opportunity to have a unified combination of systems on one project.

**CALL FOR A NEW MANUAL OR TO ARRANGE  
FOR A BOX LUNCH SEMINAR**

4100 Broadway SE  
Albuquerque, New Mexico 87105  
(505) 873-1180

**First Rate  
Architectural Photography**

- on time
- on budget
- no hassles

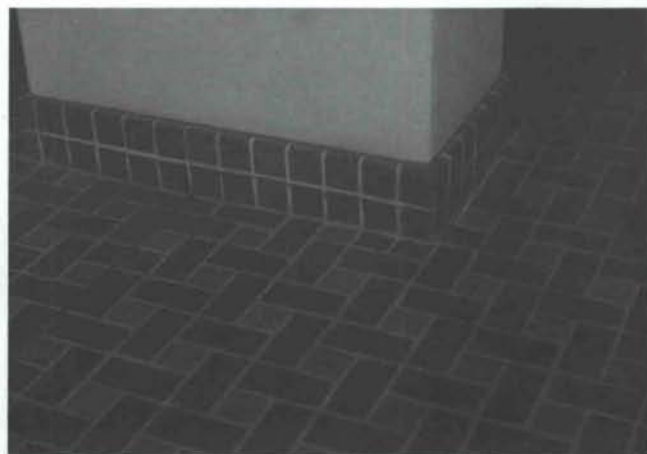
Call me today to look at my book and to find out how easy and inexpensive quality can be.

**BOB BRAZELL PHOTOGRAPHY**  
303/349-5202 800/445-1036

**KINNEY  
BRICK  
COMPANY**



Photos—Albuquerque International Airport



**BRICK!!**  
**A PERFECT CHOICE FOR A  
DURABLE YET ATTRACTIVE  
FLOOR OR PATIO**

Albuquerque

(505) 877-4550