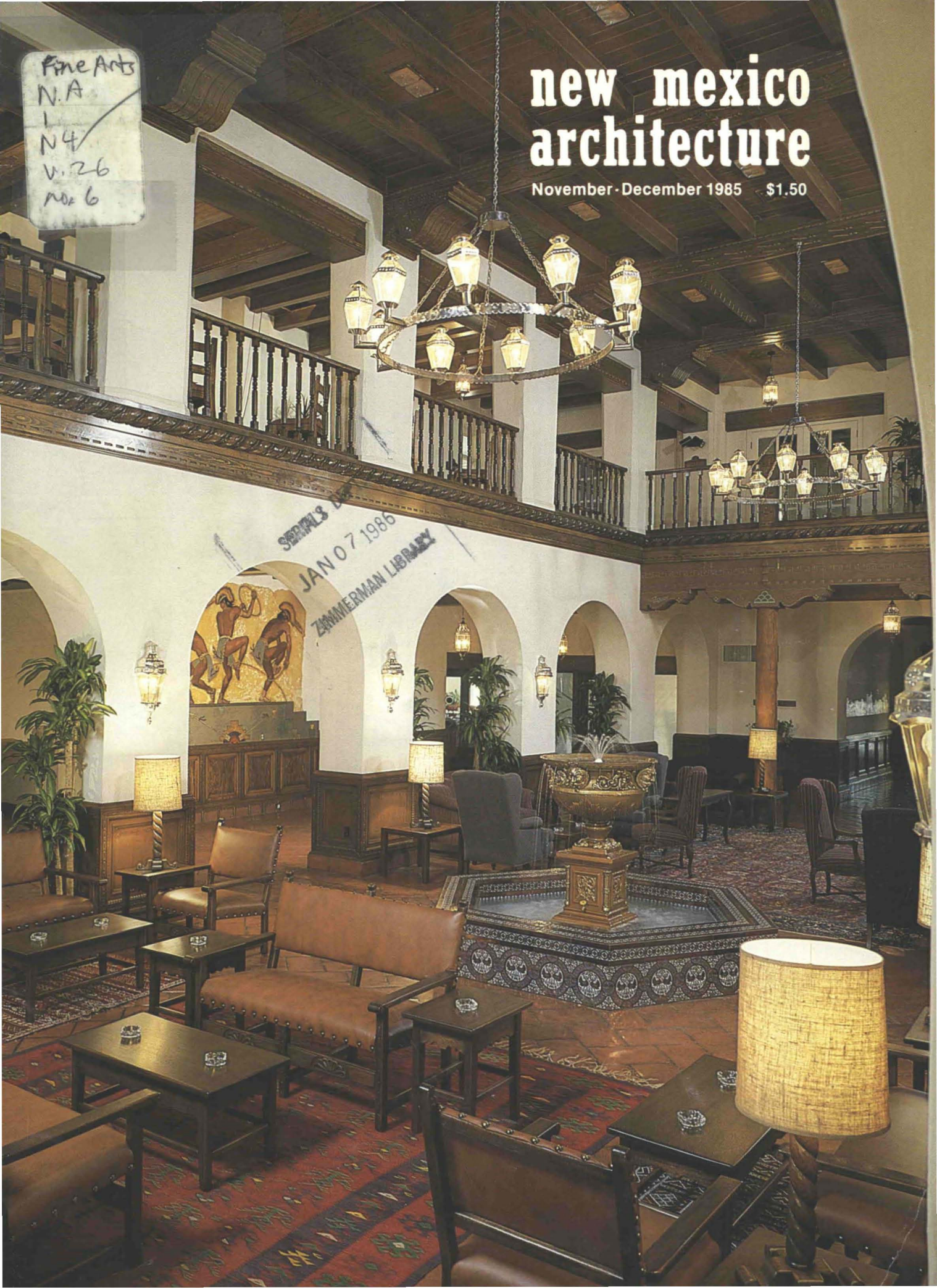


Fine Arts
N.A.
1
N4
V. 26
No. 6

new mexico architecture

November - December 1985 \$1.50

SERIALS
JAN 07 1986
ZIMMERMAN LIBRARY

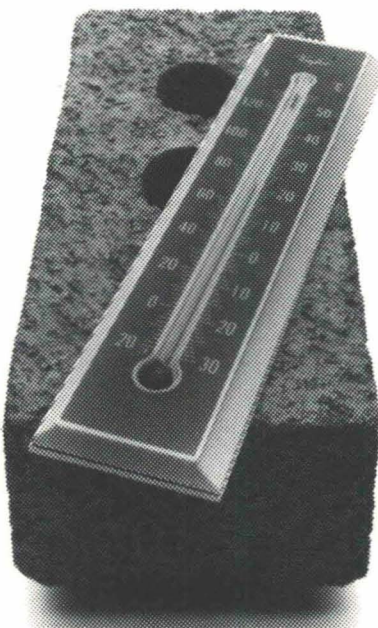


BRICK GIVES YOU A NICE WARM FEELING INSIDE.

Nothing conserves energy like brick.

It stays warmer in the winter and cooler in the summer to help keep your energy bills low.

A brick house's solid reputation for quality makes it the right place to raise a family. And brings a



higher resale value too.

So whether you're buying, building, or remodeling, you can feel good about brick.

For more information about the benefits of brick, contact your local brick manufacturer or dealer today.



BUILD A BETTER LIFE WITH BRICK.

National Brick Week, June 9-15.

MASON CONTRACTORS ASSOCIATION OF NEW MEXICO



• vol. 26 no. 6 •

nov.-dec. 1985 • new mexico architecture

In this issue:

Gordon Church, Coordinator of the City of Albuquerque's 1% For Art Program presented the annual TACA awards and wrote the presentation speech. (See page 10.) Mr. Church, was the Economic Development Planner for the City of Albuquerque and, prior to coming to Albuquerque, was the Assistant Director of the Hollywood, California Revitalization Committee. He received a B.A. degree from the University of Albuquerque, an M.A. from the University of Nebraska, did post-graduate studies in London and studied at the University of Bucharest in Romania under a Fulbright scholarship.

Ernest Bruss is the General Manager of Cogeneration Development Company, a division of Sandia Detroit Diesel, headquartered in Albuquerque. He has degrees in Business from UNM and International Management from the American Graduate School, plus post graduate work in economics and finance. Specializing in large projects for Sandia Detroit Diesel, he managed the engineering, fabrication, installation and operation of the pumps, engine and control systems for the first three blocks of the Navajo's Indian Irrigation Project. Subsequently, he supervised the manufacturing and testing of numerous standby electrical generating systems for the Federal Aviation Administration.

□ □ □ □

The cover of this issue is sponsored by the following participants in the revitalization of the former Hilton Hotel into the La Posada de Albuquerque: Boehning, Protz, Cook & Associates, architects; La Posada de Albuquerque, owners; Chaves Grieves Consulting Engineers, Inc., structural engineers; Bradbury & Stamm, general contractors; and photographer Robert Reck. We are most grateful for their contribution to the magazine.

nma

☞ The Editor's Column 3

Cogeneration 8
It May Not Be What You Think
by Ernest Bruss

The Albuquerque Conservation Association Awards 10
Awards Presentation by Gordon Church

From New Town To Downtown 17
Urban Archeology Project, Albuquerque
by Carleen Lazzell

Advertiser's Index 22

(Cover — Lobby La Posada de Albuquerque — Robert Reck, Photographer)

—Official Publication of the New Mexico Society of Architects, A.I.A.—

Society Officers

President—Don P. Schlegel, FAIA
President-Elect—Randall L. Kilmer
Secretary—Ellen Harland
Treasurer—John Eden
Director—Wayne Lloyd
Director—Peter Allen
Director—Richard Scott
Director—Lawrence Licht
Director—Allen Terrell
Director—Robert Ball
Director—William Freimuth
Director—Collen Boyd-Student Representative

New Mexico Architecture - Committee

John P. Conron, FAIA, —Editor
Carleen Lazzell — Advertising Editor
Van Dorn Hooker, FAIA — Chairman
George Anselevicius, FAIA
Marjorie Hooker, AIA
Christopher Larsen, AIA
Charles E. Nolan, Jr., AIA
George C. Pearl, FAIA
David Abeles Pfeffer, AIA
Glade F. Sperry, Jr., AIA
V.B. Price — Editor "New Mexico Magazine"
Don P. Schlegel, FAIA
Christopher Wilson, Architectural Historian

**COOK'S BUILDING SPECIALTIES
—EXPERTS—**

IN CREATIVE HARDWARE SOLUTIONS
FOR OVER 50 YEARS.



*Congratulates La Posada
on your award winning building.*

Door Hardware by
Cook's Building Specialties



414 2nd. St. S.W.
Albuquerque

243-5541
New Mexico
87103



e s t i m a t i n g i n c

1420 Carlisle N.E.
Suite 202A
Albuquerque, N.M. 87110
(505) 262-2681

**CONSTRUCTION
COST ESTIMATES**

EXPERIENCE
TECHNOLOGY
RESULTS

IF YOU THINK YOU HAVE TO GO TO A CAD SPECIALIST TO GET THE RIGHT CAD SYSTEM, YOU'RE RIGHT.

But you don't have to go out of your way.

Because Businessland has a computer aided design specialist to help put together the right microcomputer based CAD system for you. And experts in our learning center can help you get the most out of your system.

So if you thought you needed a specialist, you were right. But if you thought Businessland couldn't be that specialized, you were wrong.

BUSINESSLAND®

Where business people are going to buy computers.

ALBUQUERQUE: 6601 Menaul Blvd., N.E., 883-1833. Now more than 60 locations throughout the U.S.

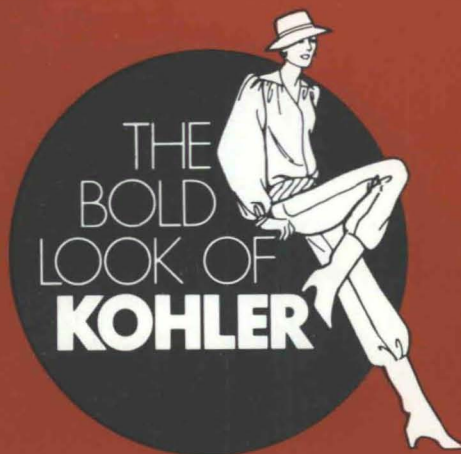


THE BOLD LOOK
OF **KOHLER**

Finally, a faucet that turns heads. The new Finesse™ faucet with fashionable blade handles and our unique Multi-Swivel™ spout that directs water wherever you desire. In beautiful finishes for kitchens and bathrooms. For more details see the Yellow Pages, or send \$2 for a catalog to Kohler Co., Dept. AY5, Kohler, Wisconsin 53044.

© 5013 Copyright 1985 Kohler Co.

**Come
and see...**



in the showrooms at



PHC Supply Company

1000 Siler Park Road • Santa Fe, N.M. • Phone: 471-1811

Active

PLUMBING SUPPLY

1500 Candelaria N.E. • Albuquerque, N.M. • Phone: 345-8587

SHOWROOM HOURS: WEEKDAYS 8:00-5:00, SAT. 8:00-12:00

LARGEST WHOLESALE DISTRIBUTORS OF KOHLER PLUMBING PRODUCTS IN NEW MEXICO



SUNTEC COMPUTERS, INC.

*Computer Solutions For Architects
Featuring*



* Hardware *

* Computer Systems *

- * Plotters *
- * Digitizers *
- * Memory Expansion *
- * Tape Back-up *
- * Accessories *

NEC's APC-III Professional Computer Systems

- * High Speed *
- * High Resolution *
- * PC Compatible *
- * Color Graphics *
- * Expandable *

* Software *

- * AutoCad *
- * Estimating *
- * Job Cost Accounting *
- * Project Management *
- * Specifications *
- * Word Processing *

Please come by, or call Pat Koontz, to schedule a demonstration

1523 Eubank NE, Albu., NM 87112 Since 1978

(505)298-0800

Beauty & Performance... The Perfect Pair!

Weather Shield offers you both
in the line of quality wood windows
and steel insulated entry systems.



All Weather Protection - Always!



Western Building Supply Co., Inc.

4201 Los Angeles, NE

Albuquerque, New Mexico 87113

(505) 823-2500

JL Mechanical^{Inc.}

**COMMERCIAL
REMODEL
RENOVATION**

Lic. #23561
3313 Girard, N.E.
Albuquerque, NM 87107
(505) 883-3835

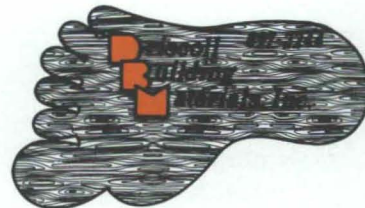
MARVIN WINDOWS ARE MADE TO ORDER.

DRISCOLL BUILDING MATERIALS, INC.

7901 4th STREET, N.W. • (4th at Ranchitos) • ALBUQUERQUE, NEW MEXICO 87114 • (505) 897-2244



HOW TO GET BIG AND TOUGH AND STILL BE EASILY MOVED.



A lot of commercial work, both new construction and renovation, has gone direct glazing simply because there wasn't a window that would stand up to the load. Others have used aluminum or steel framed windows that don't live up to the architectural integrity of the building.

Marvin's Magnum Double Hung changes that.

Like the name implies, this is a window that's engineered for high performance. Without compromising on appearance.

The frames are cut from heavy

$\frac{3}{4}$ " stock. And the sash are a full $1\frac{3}{4}$ " thick, constructed with slot and tenon joints for exceptional strength.

For comfort and energy efficiency, $\frac{3}{4}$ " insulating glass is standard*. And for security, the Magnum features a heavy, pick-resistant bronze cam lock so each unit may be securely locked from the inside. In fact, this lock meets "forced entry specifications".

Because of its heavier construction and unique design, it's available in large sizes and accepts a wide variety of glazing

options. In addition, it stands up to greater wind loads, higher rain velocities and performs well in severe weather conditions.

But all this means nothing if a window becomes hard to operate. So we make sure our Magnum is easily moved. Each sash is equipped with four double coil springs on block and tackle balances.

Marvin's Magnum Double Hung. It opens a lot of possibilities.

*Excellent weatherstripping is included on the header, check rail and the bottom of the bottom sash.

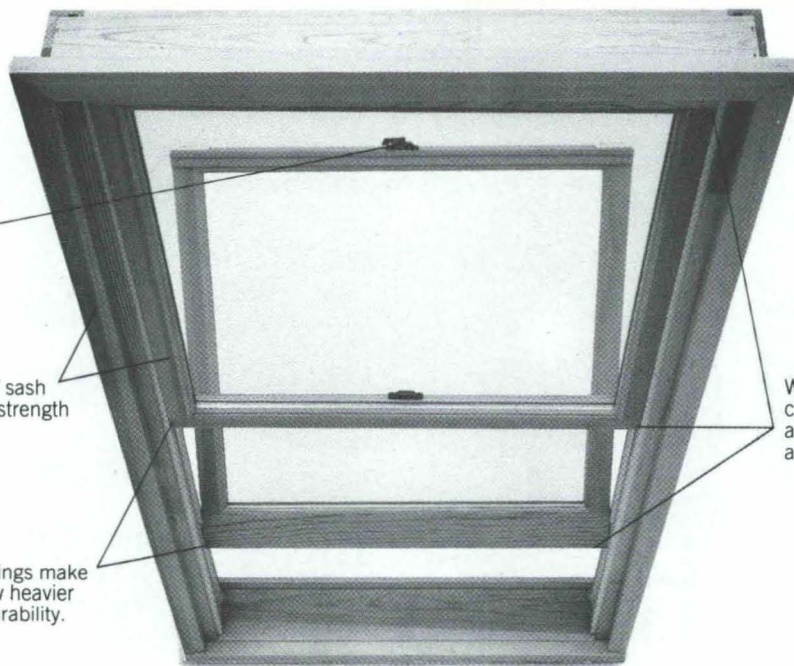
MAGNUM DOUBLE HUNG.

Heavy cam lock assures security.

$\frac{5}{4}$ " frames and $1\frac{3}{4}$ " sash provide exceptional strength and durability.

Four double coil springs make operating easy, allow heavier glazing for added durability.

Weatherstripping at all three critical points; top, middle and bottom to cut heating and air conditioning costs.

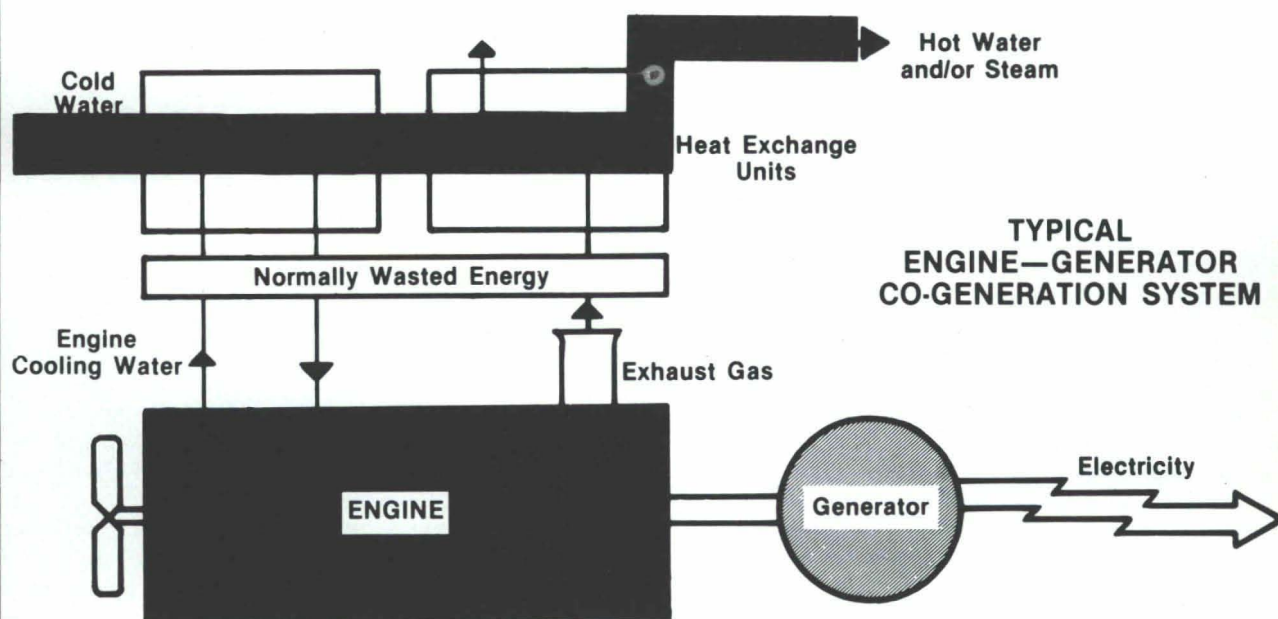


OPTIONS: Jamb extensions, factory applied ($5\frac{1}{2}$ " is standard)/Clear brick mould casing (non finger-jointed)/Flat casing/Aluminum flashing in white or brown/Rectangular grids/Sash lift in statuary bronze/Screen, aluminum surround in white or brown GLAZING OPTIONS: ($\frac{3}{4}$ " insulating glass is standard)/Single glazing/Tripne glazing/Low-E glass/Authentic divided lites, single glazing/Authentic divided lites, insulating glass/Solar bronze glass/Solar gray glass/Solar cool glass PREFINISH OPTIONS: (Bare wood is standard)/Exterior prime/Exterior prefinish-XL-72 (White)/XL-82 (Bahama brown)/XL-92 (Pebble gray)/Interior prime

Reduce Your Energy Bills 20% to 40% with **CO-GENERATION**

Generate Your Own Electricity.
Use the Waste Heat to Make Steam and Hot Water.

Economic Analysis • Manufacturing
Project Development • System Management



For System Analysis to Determine Your Potential for Savings With Co-generation Contact:



Ernest Bruss
COGENERATION DEVELOPMENT COMPANY

(A DIVISION OF SANDIA DETROIT DIESEL)

2929 Vassar NE
Albuquerque, NM 87107
(505) 881-3511