

new mexico architecture

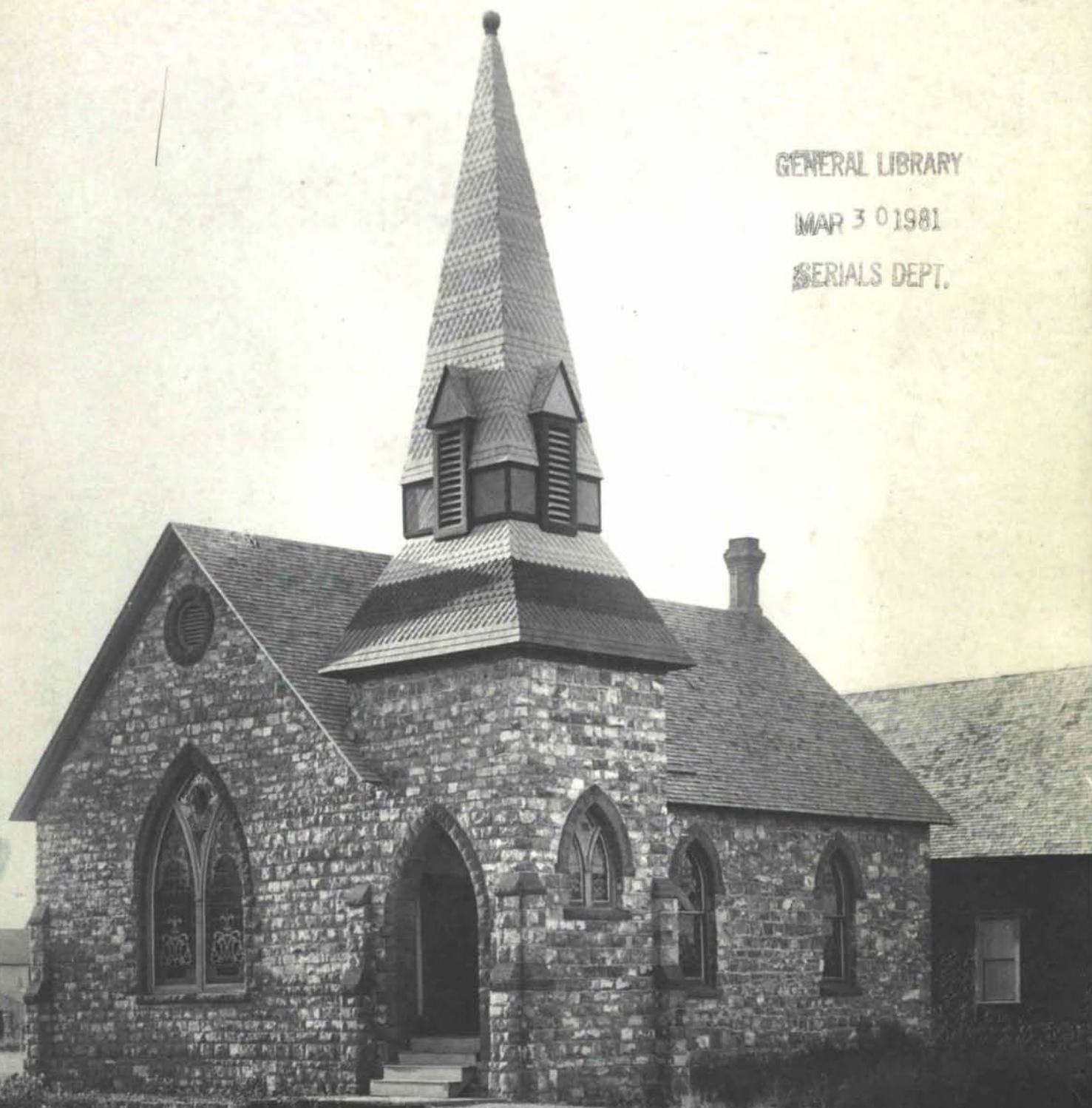
January-February 1980

\$1.00

GENERAL LIBRARY

MAR 3 0 1981

SERIALS DEPT.

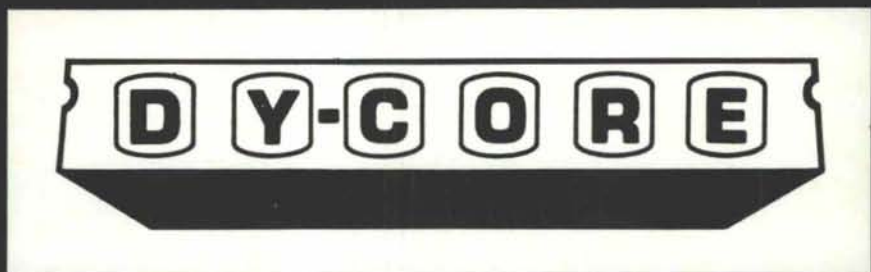


Historical Society of New Mexico
Annual Conference, Roswell, April
1980 (see page 14)

CREGO BLOCK COMPANY

is pleased to introduce a new building material system to the construction industry of New Mexico.

In our newly completed facility, we will be producing



precast/prestressed concrete hollow core slabs and other related precast building components.

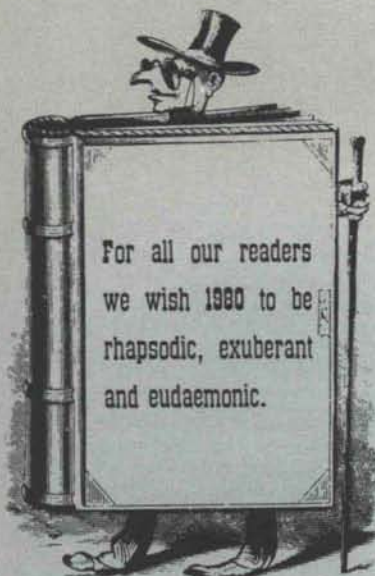
DY-CORE may be integrated into practically any type of structural system—loadbearing masonry, steel, structural concrete, etc.

We will be providing complete sales and technical services to assist you in the use of the DY-CORE structural system.

**6026 SECOND STREET, N.W.
ALBUQUERQUE,
NEW MEXICO 87107**



(505) 345-4451



• vol. 22 no. 1 •

WITH THIS ISSUE we welcome a new year. We hope that your new year will be a fine one, in spite of Iranians, Russians, gasoline shortages and soaring prices. I suspect that the feet of man and horse may become increasingly important as the new decade of the '80's unfolds. (Is 1980 the first year of a new decade, or is it in fact the 10th and last year of the old decade?) I already have my buggy sitting, waiting in the garage; it may well see a renewed and useful service.

When I hear those wonderful people who work so hard for us in the service of government, implore us to save resources by cutting our gasoline consumption, etc., I cannot but question their sincerity. As I drive my small car along the highways of New Mexico, I am constantly being passed by state or federal agency automobiles speeding to here and there at 60 to 70 mph. The most blatant violation of the 55 mph law was by a recent speeder; a Department of Energy gas guzzler whizzed by, but proudly displayed a rear bumper sticker imploring us all to drive at a gas saving 55 mph! I was; he wasn't.

Further, has anyone of you seen an elected representative to our legislature drive at the 55 mph? I think that I would have the political decency to use a regular license plate if I thought I needed to drive at those excessive speeds in order to get-to-the-round-house-on-time.

"Do as I say, not as I do."

Happy New Year.

—JPC



MAGAZINE SUPPORTERS:

The NMA staff wishes to thank those members who have contributed to its growth.

Sponsor: Charles E. Nolan, Jr.

Patron: Boehning/Protz & Associates

nma

• jan.-feb. 1980 • new mexico architecture

NMA News 7

New Hotel for Albuquerque—Catalog
of Architectural Records conveyed to
Library of Congress—N. M. Arts Commission
An AIA Congressional Update—Historic Houses—
Application Deadlines

Swimming Pool at Belen 12
Fernandez, Trujillo, Architects

Annual Conference of
the Historical Society of N. M. 14

A new Process—A Sound
Basis for Design 16
—by Laban W. Wingert, AIA

Advertisers Index 18

(Cover—Early photograph of The First Baptist Church of Roswell, built in 1896, located on the corner of Fourth and Pennsylvania. Photograph courtesy of the Chaves County Historical Museum, Pecos Valley Collection.)

—Official Publication of the New Mexico Society of Architects, A.I.A.—

Society Officers

President—Randall L. Kilmer
President-Elect—Robert J. Strader, Jr.
Secretary-Treasurer—Dale L. Crawford
Director—Wilbur T. Harris
Director—Kestutis Germanis
Director—John P. Conron, FAIA
Director—William L. Burns
Director—Stanley J. French
Director—Ervin Addy III
Director—John Moore
Director—Sam Pool
Director—Reynaldo V. Torres
Director—Ed French
Director—Beryl Durham
Past President—John C. Bland

Commission for NMA

John P. Conron, FAIA/FASID,—Editor

Bainbridge Bunting—Editorial Consultant

Mildred Brittelle—Accounting
and Circulation

Charles E. Nolan, Jr.



ENGINEERING SERVICES
ALBUQUERQUE TESTING
LABORATORY...To Be Sure!

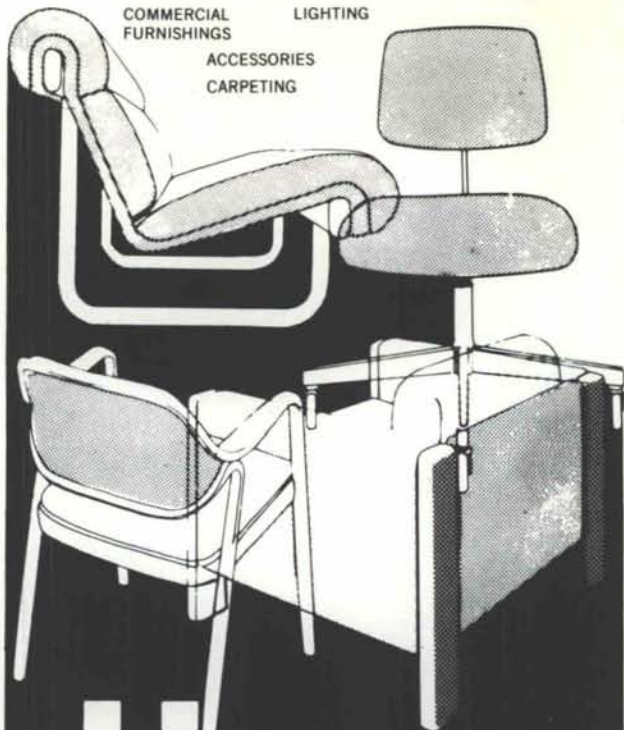
P. O. BOX 4101
 532 JEFFERSON, N.E.
 ALBUQUERQUE, NM 87196
 505-268-4537

SUBSOIL INVESTIGATIONS
 FIELD DENSITY
 GEOTECHNICAL ENGINEERING
 INSPECTION
 LABORATORY TESTING AND ANALYSIS
 EVALUATION OF CONSTRUCTION MATERIALS
 RESEARCH
 WELDING CERTIFICATION

All Work Done Under Supervision of
 Registered Professional Engineers



PROFESSIONAL
 DESIGN SERVICE
 COMMERCIAL
 FURNISHINGS
 LANDSCAPE
 SYSTEMS
 LIGHTING
 ACCESSORIES
 CARPETING



**american
 business
 interiors**

612 CENTRAL S.W.
 PH 883-2055

YOU SAVE WITH NEW *Spectra-Glaze II* GLAZED BLOCK WALLS

CONSTRUCTION — Build and finish in one operation
 . . . walls go up faster — one trade, large units lay
 up fast . . . thru-wall load bearing units eliminate
 expense of back up wall.
MAINTENANCE — No refurbishing ever. Permanent,
 sanitary, factory finish — cannot peel or blister . . .
 easy to clean and keep clean.
ENERGY — Excellent U-factors with lightweight block
 and insulating granular fill.
INSURANCE — Maximum security and protection at
 lowest cost, with fire-rated walls.
GOV'T REQUIREMENTS — Meet USDA and OSHA
 specifications for health, sanitation and safety.



© U.S. Pat. Off., Can. & other countries by THE BURNS & RUSSELL CO.

FEATHERLITE BLOCK CO., Box 489, Lubbock, TX 79408 806/763-8202
 FEATHERLITE BUILDING PRODUCTS CO., Box 9977, El Paso, TX 79990 915/859-9171
 CREGO BLOCK CO., INC., 6026 2nd St. NW, Albuquerque, NM 87107 505/345-4451

YOU SAVE TIME/YOU SAVE MONEY
WITH THE ECONOMY OF BLOCK & THE PERFORMANCE OF GLAZE



**Marble
 Quarry Tile
 Monarch Tile
 Terrazzo Floors
 Dex O Tex Floors**

New Mexico Marble & Tile Inc.

2500 2nd SW
 P.O. Box 25566
 Albuquerque, NM 87125
 (505) 243-1771

763 Cerrillos Rd.
 Santa Fe, NM 87501
 (800) 432-8655

AZTEC

MEANS...

ONE STOP FLOOR COVERINGS



IMPORTED CERAMIC TILES

Italian, glazed quarry mosaics,
and unglazed quarry



CARPET

Full line of residential,
commercial and kitchen
carpets — Oriental rugs,
runners and area rugs



SHEET VINYL

Armstrong, Mannington,
Congoleum, GAF



MEXICAN TALAVERA AND SALTILLO TILES



PACIFIC CLAY MINI-BRICK

7/16" Alberhill clay bricks that
save weight, labor, dollars.



SINCE 1960

TILE and CARPET

**2520 SAN MATEO N.E.
PHONE 884-6579**



Another building, another boost for the Trus Joist system.

Baker Construction Co. of Albuquerque is no stranger to Trus Joist. When architect John Reed called on us to supply a system for the Geology/Engineering Bldg. for Ranchers Exploration and Development Corp. Les Baker was pleased. Upon completion of the Trus Joist installation he told us:

"... we found the use of TJI units as efficient and economical as ever. As one of the first users of Trus Joist units in this area, we have been, and will continue to be one of their boosters."

If you want to see how easy and economical joist application can be, see us soon. We've got exactly what you're looking for.

In Albuquerque, call
McGill Stephens, Inc.,
300 Virginia SE
Albuquerque 87108
Phone (505) / 265-5935

In El Paso, call
McGill Stephens, Inc.,
4100 Rio Bravo St.,
Suite 320, El Paso 79902,
Phone 915/544-4505

Trus Joist structural roof and floor systems distributed by McGill Stephens, Inc., Albuquerque and El Paso.



In case of fire, head for the nearest brick or block exit.

You'll be safer there.

Fire walls built of brick and block won't burn. They won't smoke or smolder. They stop fire from spreading into stairwells. They assure you of a flame-free exit for occupants, as well as a way in for firemen.

Properly constructed masonry walls are air-tight, too, so they'll also keep smoke from spreading.

Masonry stands up to intense heat. It retains its structural strength in loadbearing buildings while steel loses its loadbearing capacity at temperatures above 1,000 degrees F. Glass and metal curtain walls can shatter and even melt in a fire, but not masonry.

And masonry stands up to intense water pressure, too, while partitions made of some other materials can collapse under heavy water exposure.

No one likes to think of fires breaking out in buildings, but every public and private building owner, designer and contractor has to. So build with masonry, just in case.

INTERNATIONAL MASONRY INSTITUTE

(The Bricklayers' International Union and the Mason Contractors in the U. S. and Canada)

823 Fifteenth St., N.W.
Washington, D.C. 20005
202/783-3908



MASON CONTRACTORS ASSOCIATION OF NEW MEXICO