



YOUR LOCAL AIA FORM SERVICE

offers to all AIA members and componets a 50% discount on all "B" series and a 20% discount on all other forms and documents.

Please use the February 1, 1977 price list for new prices.

This is a service of the New Mexico Society of Architects, and we appreciate your support.

Office hours from 9 to 12,
Monday through Friday

AIA FORM SERVICE

915 LEAD, S.W.
Box 7415

(505) 242-4159
ALBUQUERQUE, NM 87104



new mexico architecture

nma

Published bi-monthly by New Mexico Society of Architects, American Institute of Architects, a non-profit organization.

Editorial Correspondence should be addressed to John P. Conron, Box 935, Santa Fe, N. M. 87501. 505 983-6948.

Editorial Policy: Opinions expressed in all signed articles are those of the author and do not necessarily represent the official position of the publishing organization.

No responsibility will be assumed by the editor or publishing organization for unsolicited contributions. Return postage should accompany all unsolicited manuscripts.

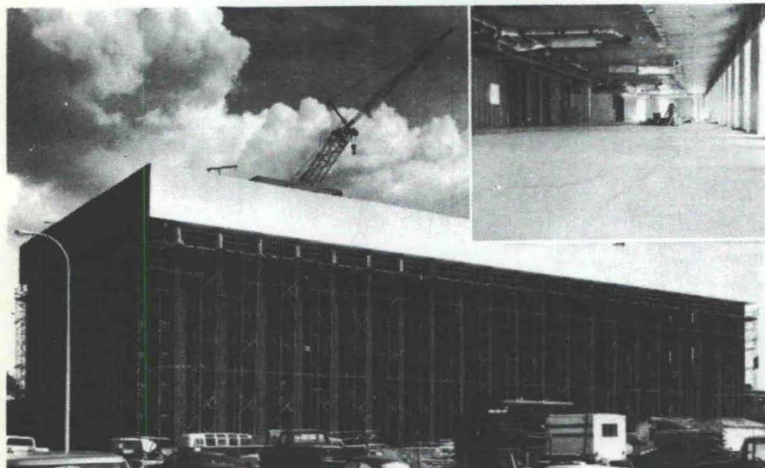
Subscriptions: Write Circulation, New Mexico Architecture, Box 7415, Albuquerque, N. M. 87104. Single copy \$1.00. Yearly subscription \$5.00.

Change of address: Notifications should be sent to New Mexico Architecture, Box 7415, Albuquerque, N. M. 87104 at least 45 days prior to effective date. Please send both old and new addresses.

Advertising: Send requests for rates and information to New Mexico Architecture, Prince Advertising Agency, P. O. Box 11309, Albuquerque, NM 87112.

Additional copies of NMA available from John P. Conron FAIA/FASID, P. O. Box 935, Santa Fe, N. M. 87501.

Structural integrity: The concrete facts of southwestern life.



Employment Security Commission Office Building in Albuquerque
Architect: W. C. Kruger and Associates
Structural Engineer: Robert Krause
ChemComp Concrete supplied by Albuquerque Gravel Products Company

The assignment was to place concrete floors on metal decks in the new Employment Security Commission Office Building in Albuquerque. ChemComp® was specified to reduce or eliminate cracking typical of this type of placement. The architects and engineers were well satisfied with the results (see inset). Check ChemComp's many advantages by writing for our free brochure: Box 392, El Paso, Texas 79943.



SOUTHWESTERN PORTLAND CEMENT COMPANY
MAKERS OF EL TORO CEMENTS / EL PASO, AMARILLO, ODESSA

Printed By

Hall-Poorbaugh Press, Inc., Roswell, N. M.

INDEX OF FIRMS who make possible the publication of NMA and the page upon which their message may be found:

AIA Form Service	22
Albuquerque Testing Laboratory	20
American Interiors	23
Builders Block & Stone Co., Inc.	21
Crego Block & Stone Co., Inc.	2
Customcraft Fixtures	6
Doric Credit Union	20
El Rey Stucco Co., Inc.	20
Hanley Paint Mfg. Co., Inc.	23
Hydro Conduit Corporation	24
Mason Contractors Assn. of N.M.	4
McGill Trus Joist	6
New Mexico Office Furniture	20
Overhead Door Co.	21
San Vallé Tile Kilns	7
Southwest Vermiculite Co., Inc.	10
Southwestern Portland Cement Co.	22
Spectra-Glaze	6
Stanley Structures	5
Stryco Sales, Inc.	21
Summit Brick	23