

line
rts
A
4
. 12
o. 6

new mexico architecture

November-December 1970 50¢





AMPEX CORPORATION
OFFICES AND MANUFACTURING PLANT
ALBUQUERQUE, NEW MEXICO

ARCHITECT —
WM. W. ELLISON & ASSOC.
CONTRACTOR —
GEORGE A. RUTHERFORD, INC.

Another fine Commercial-Industrial Building where **SLUMP BLOCK** concrete masonry units were utilized throughout. Just one more example of the enhancement of regional character due to the selection of **SLUMP BLOCK**.

CREGO BLOCK CO., INC.

Phone (505) 344-3475

6026 Second St. N.W.

Albuquerque, N. M. 87107

nma

vol. 12 • nos. 11 and 12 • nov. - dec. 1970 • new mexico architecture

Arbitration and the Architect — Joe Boehning, AIA 9

A plea for Arbitration Legislation

1970 Honor Awards—NMSA 12

1970 New Mexico Arts Commission Awards 15

1970 Follies Awards—NMSA 17

NMA News 19

An Announcement from the
New Mexico Construction Industries
Commission — A correction for the
Albuquerque Press — A new political advisor.

(Cover — New Mexico in Winter)

— Official Publication of the New Mexico Society of Architects, A. I. A. —

Society Officers

President—Joe Boehning
Vice President—Earl P. Wood
Secretary-Treasurer—Charles E. Nolan, Jr.
Director—Beryl Durham
Director—Duane Dorsey
Director—Terence Ross
Director—Wilbur Harris
Director—Van Dorn Hooker
Director—George Pearl
Director—John P. Conron

Commission for NMA

John P. Conron—Editor
Bainbridge Bunting—Editorial Consultant
Robert G. Mallory—Advertising
Mrs. Mildred Brittelle—Financial
Secretary, Circulation
John W. McHugh
James M. Murray, III



Instructional Resources Center
Grants Municipal Schools
Grants, New Mexico

Ferguson, Stevens,
Mallory & Pearl—
Architects

**Warmth . . . lightness . . . structural strength
. . . economy . . . ALL add up to TRUS JOIST.**

Another unique requirement . . . another need for clear span . . . another call for TRUS JOIST.

Here's how the customer puts it.

"We wanted the central space, where teachers examine and evaluate books and other media, to have the warmth and lightness of a residential library. TRUS JOISTS, with wood top and bottom chords and small diagonal members, made the continuous clerestory possible, and related well to the wood decking above and the continuous lighting below."

Unique requirement solved.

Another client happy.

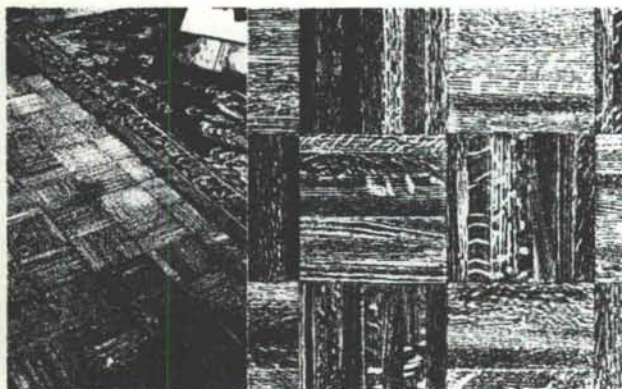


George B. McGill

7100 Constitution Avenue N.E.
Albuquerque 505/256-2058

PermaGrainTM

wood/plastic
composite flooring with a
"forever" finish



THE PARQUET WITH THE FOREVER FINISH!

Permagrain is a new generation of construction material. It combines the warmth and beauty of natural wood with the durability and chemical resistance of modern plastics.

In essence, "Permagrain" is wood with the beauty left in, and the bother taken out. Permanently finished—easily installed on wood or concrete.

**NEW MEXICO
MARBLE AND TILE CO.**
414 Second St., S. W. Albuquerque, N. M.
P. O. Box 834 • Phone 243-5541

TELEPHONE (505) 247-4131

ALBUQUERQUE, NEW MEXICO 87110

EDITH AT ARVADA, N.E.

POST OFFICE BOX 3247

THE MAYHEW COMPANY
NSL

PARTITION SPECIALISTS --

MASONITE | Movable
Office
Partitions

SUPERIOR | Folding
Corridor
Partitions

SUPERIOR | Wire
Mesh
Partitions

WON-DOOR | Folding
Sound &
Fire
Partitions

Toilet partitions and movable
partitions stocked in
Albuquerque!

ALWAYS SPECIFY

STRESSCRETE SLABS

PERFECT FOR . . .

- APARTMENT
- SCHOOL
- MOTEL
CONSTRUCTION

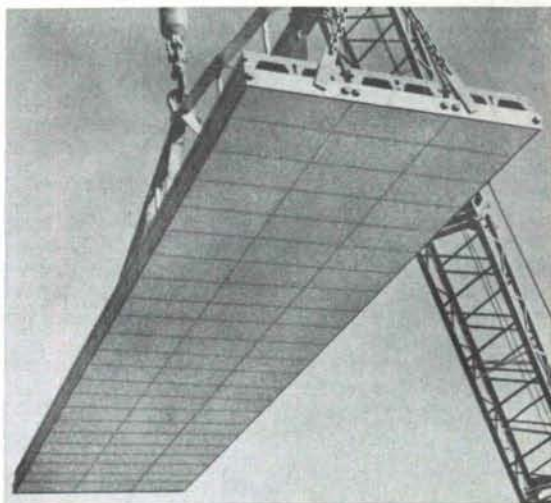
Fire-safe, Low-Maintenance Roofs
and Floors by . . .

THE



BUILDING PRODUCTS CO.

P. O. BOX 9977 • EL PASO, TEXAS • PHONE 772-1451



ALL THIS...AND ECONOMY TOO



PRESTRESSED 
CONCRETE PRODUCTS, INC.

1304 Menaul Blvd. N.E., Albuquerque, N.M. 87106 (505) 345-2536

This commercial building, built for M. M. Blackburn Construction Co., features a roof of Prestressed Concrete twin tees 8' wide x 18" deep. Prestressed Concrete allows a builder or owner to construct a building of the finest quality at an economical price, with fast construction and maximum fire resistance.

Prestressed Concrete twin tees may be fabricated in spans up to 75 feet.

FROM CONCEPT TO COMPLETION



Exclusive distributors for TAYLOR

Consultation Planning Design Layout

Criteria, skill, artistry and experience are fused to produce laboratory furniture meeting the most exacting requirements of contemporary science educators and architects. Units immediately available and within the reach of any school or institutional budget.

Architects use our design consultation services for: Science Labs / Offices / Artrooms / Dormitories / Libraries / Auditorium Seating / Home Economics Labs / Gymnasiums

UNIVERSITY BOOK STORE ALLIED SUPPLY CO.

2122 Central, SE
Phone 243-1776
Albuquerque, N. M.

Goodrich Roofing Co.

A CORPORATION

Serving New Mexico For Over 20 Years

NO JOB TOO LARGE—OR TOO SMALL
ALMOST EVERYTHING IN ROOFING
AND SHEET METAL

GOODRICH ROOFING IN
ALBUQUERQUE FOR GOOD . . .

OUR CREDENTIALS . . . THOUSANDS OF
SATISFIED CUSTOMERS

FREE ESTIMATES

(505) 345-1854

3402 Stanford Drive, N. E.
ALBUQUERQUE, NEW MEXICO

Happiness is having a good roof by Goodrich

VARIATIONS ON A THEME:

Spectra-Glaze®

SCORED glazed concrete UNITS

Reduce scale
with the
economy of
large
8 x 16 block.

(S) Cataloged in SWEET'S

® Reg. U.S. Pat. Off., Canada
& other foreign countries by
THE BURNS & RUSSELL CO..

ATLAS BUILDING
PRODUCTS, El Paso, Texas
CREGO BLOCK CO.,
Albuquerque, N. M.
EMPIRE BLOCK CO.,
Santa Fe, N. M.

★
FEATHERLITE TILE CO.,
Lubbock, Texas

Now Available State Wide:

CREATIVE CONCRETE PRODUCTS



*in 6 shapes, 11 sizes
Also available in colors
made in New Mexico by*

**AGP ALBUQUERQUE
GRAVEL PRODUCTS
COMPANY**

SIMPSON

Strong-Tie® CONNECTORS

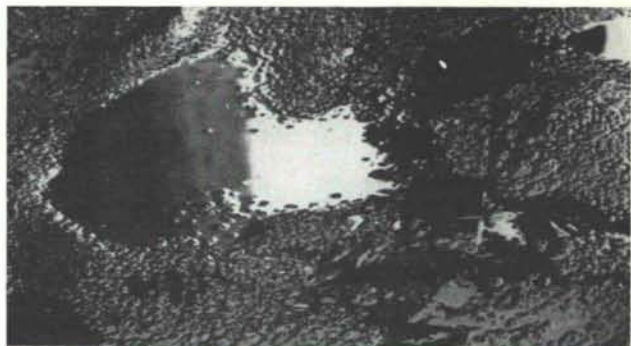


WHEN YOU SPECIFY SIMPSON

... you have selected the nation's largest and most comprehensive supplier of wood connector products. Simpson's leadership is due to superior engineering and design resources, advanced manufacturing capability, and responsiveness to facilitate usage and document the design and values. Simpson's quality production assures your clients and contractors of low, competitive prices, and inventories for fast delivery.



**3825 EDITH BLVD., N.E.
PHONE 345-2511**



Ponding causes a whole deluge of problems. Zonolite roof deck systems turn them off.

Zonolite® has roof decks for everything. For the slope-to-drains. For hurricanes. For protection against fire. And for insulation.

Roof deck systems certified by Zonolite. Available everywhere in the U. S. and Canada. Installed by approved applicators each and every month of the year.

Just talk to your local Zonolite representative. He'll be pleased to consult with you and come up with a recommendation that will satisfy all your design requirements.

Want to correct a roof deck problem. Or better yet, prevent one in the first place?

Say the word!

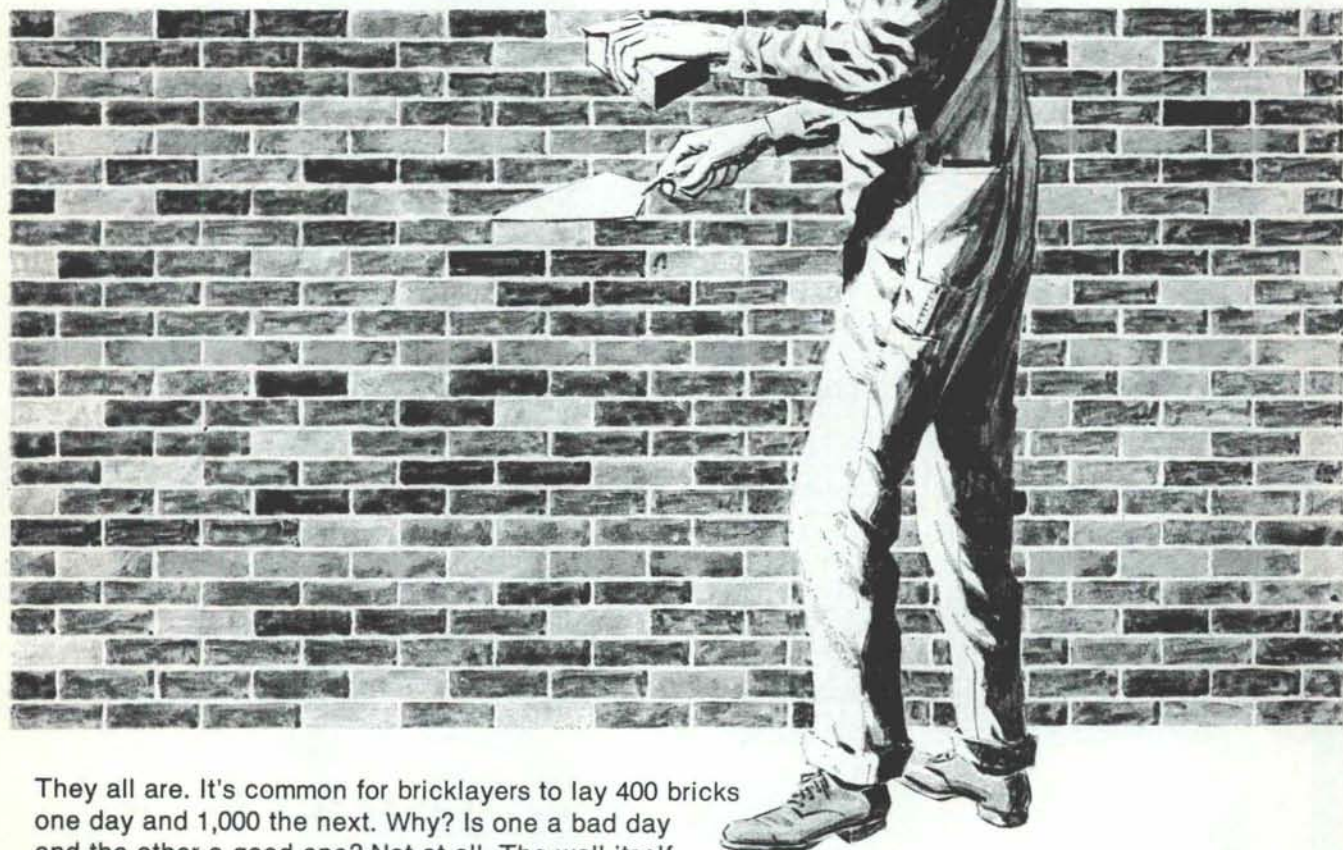


ZONOLITE

Southwest Vermiculite Co.
5119 Edith Blvd. N.E.
Albuquerque, New Mexico 87107



What's a good day's work... 400, 700, or 1,000 bricks a day?



They all are. It's common for bricklayers to lay 400 bricks one day and 1,000 the next. Why? Is one a bad day and the other a good one? Not at all. The wall itself determines how many bricks per day. Thin brick walls with ornamental bonds and many openings—the kind frequently used these days—just naturally take longer to build than the thick, solid walls common 50 years ago.

The fact is that bricklayers are laying more brick than ever before. For instance, a 1910 building cost handbook said, "400 bricks a day for veneering a frame house is a good day's work." Today, it's common for bricklayers to lay 500 or more bricks per day on veneer walls.

A recent survey of mason contractors showed that bricklayers average about 725 bricks per day. That's one brick every 40 seconds. It means lifting almost two tons in an eight-hour day. (It also produces a cheaper—often more than 50% cheaper—permanent wall than do competitive materials.)

That's a good day's work.

**Mason Contractors
Association of New Mexico**

Affiliated with Mason
Contractors Association of America

"Helping Build New Mexico with Sound Masonry Construction"