

June Arts  
720.5  
N 4195  
V. 8  
No. 3-4

# new mexico architecture



march-april 1966 50¢



# Through 50 Years...



COURTESY REX CHAINBELT, INC.

**1916** Steam-powered concrete mixers and horse hauling built quality streets and roads



**1966** High-speed trucks deliver concrete ready mixed for every type of construction

## **improving and extending the uses of concrete**

Helping architects, engineers and builders to realize ever broader success with concrete has been a major objective of cement manufacturers. Through their Portland Cement Association, now observing its 50th year, they have contributed to construction progress, quality and economy by sponsoring large-scale service programs.

Research conducted in a \$10 million laboratory installation has helped concrete meet the needs of a new era.

Users of concrete, faced with continuously changing construction technology, have depended on the continuing flow of PCA technical literature. They have benefited from the services of over 375 field engineers and numerous other specialists working out of 38 district offices.

In the future, as in the past, the continuing job of the Portland Cement Association remains *service . . . service* that aids every user of cement.



**PORTLAND CEMENT ASSOCIATION**

Suite 705—5301 Central N.E., Albuquerque, N.M. 87108

*1966  
50th year*

An organization to improve and extend the uses of concrete, made possible by the financial support of most cement manufacturers in the United States and Canada.

# nma

vol. 8 • nos. 3 and 4 • mar. - apr. 1966 • new mexico architecture

Roster, New Mexico Society of Architects	7
An Open Letter To Architects — Thomas R. Vreeland, Jr., AIA	11
The 15th Annual Conference	12
Albuquerque Honor Awards, a correction	12
A Home For The Apes — Wright And Underwood, Architects	13
The Strip! What Is It? — J. B. Jackson	17
The Anti-Billboard Act, A Report	23
Contributors	26
Index To Advertisers	26

(Cover — Roy Rosen, Photographer)

— Official Publication of the New Mexico Society of Architects, A. I. A. —

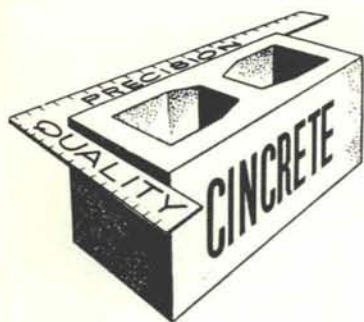
## Society Officers

President—Hugh Rowland  
Vice-President—Robert Mallory  
Secretary-Treasurer—Don Oschwald  
Director—Joe Boehning  
Director—Bradley Kidder  
Director—Albert S. Merker  
Director—Charles Noland  
Director—John B. Reed  
Director—James Voll

## Commission for NMA

Bainbridge Bunting)  
John P. Conron) Co-Editors  
Jean Rodgers Oliver—Photographer  
W. M. Brittelle, Sr.—Advertising  
Van Dorn Hooker—Circulation  
Rembert C. Alley, Jr.  
Jim Murray  
Hugh Rowland  
Don Oschwald





Serving Southwestern New Mexico  
and El Paso with  
**Quality Concrete Masonry Products**  
and many allied building materials



*Hollow Metal Doors and Frames*

*Commercial Hardware*

*Residential and Commercial Steel and Aluminum Windows*

*Wood and Plastic Folding Doors*

*Reinforcing and Fabricated Steel*

**Builders Block & Stone Co., Inc.**

P. O. Box 1633

622-1321

Roswell

El Paso

532-9695

**Builders Block & Supply Co., Inc.**

P. O. Drawer FF

524-3633

Las Cruces

Members of New Mexico Concrete Masonry Assn. and National Concrete Masonry Assn.



Built-up Plate Girder by Rio Grande Steel Co., Inc.

**"STEEL SHAPES THE FUTURE"**

7100 Second Street, N.W. / Post Office Box 477  
Phone 345-2611, Area 505 / Albuquerque, N. M. 87103

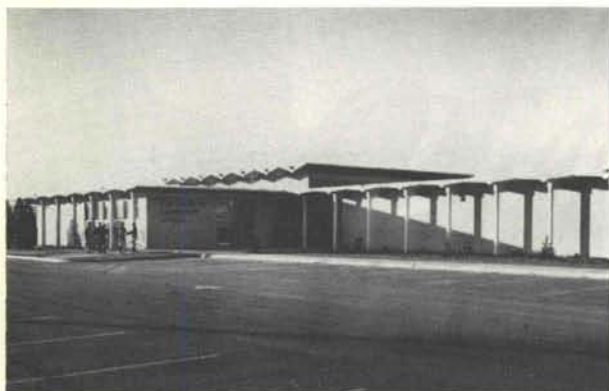
**RIO**

**GRANDE**

**Steel Products Company, Inc.**

628 W. Maple Street / Post Office Box 2002  
Phone 325-1926, Area 505 / Farmington, N. M. 87401

CONSULTING SERVICES AVAILABLE



LOS PADILLAS ELEMENTARY SCHOOL  
Wm. W. ELLISON, ARCHITECT & ASSOCIATES

10' LIN TEE & LIN Y MEMBERS SUPPORTED  
ON INDIVIDUAL COLUMNS ARCHITECTURALLY  
EXPRESS THE ROOF OF THIS SCHOOL.



**PRESTRESSED CONCRETE PRODUCTS, INC.**  
MANUFACTURERS OF ROOF AND FLOOR DECKS

**THEY EXCEL IN**

- ECONOMY ● PERMANENCY ● DURABILITY
- VERSATILITY ● FLEXIBILITY
- and most important ● FIRE RESISTANCE

1900 MENAUL ROAD N. E.

(505) 345-2536

ALBUQUERQUE, NEW MEXICO 87106

QUALITY BUILDING  
DEMANDS  
QUALITY PLUMBING  
Which Means



AVAILABLE AT

**ALBUQUERQUE**

*Lumber* COMPANY

1881

1966

-- EDITH YARD --

3825 Edith, N.E.

Phone 345-2511

**Miller**

**Metal company**

*Direct Factory Dealers for*

**LENNOX**

*Heating and Air Conditioning*

Readily available for your information and/or use are complete specifications along with Technical data for the Heating and Air Conditioning requirements of your project.

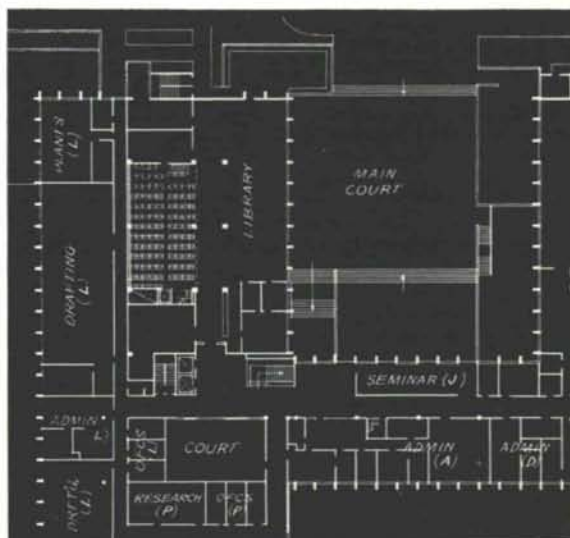
Just call 268-3351 for **Ed Miller** at Miller Metal Company or the territory manager for LENNOX, **Bob Vetterman** at 265-0417 for an appointment.

**MILLER METAL COMPANY**

118 Alcazar S.E.

Albuquerque, N. M. 87108

Right  
at  
this point...



we can help you  
give your client  
an extra service  
(and at no extra cost)

Just ask our Communications Consultant to drop by. He can help you provide facilities for communications that will keep pace with growth.

At no cost, he'll be happy to take your building plan, provide a schematic for your building's entire communications system, and deliver it to you to make it a part of your complete plan.

At the blueprint stage, he can show you how you can save the extra costs and delays that can crop up by waiting to plan communications after construction has begun.

Just call our Business Office and ask for our Communications Consultant. There's no obligation, of course.



**Mountain States Telephone**



16 acres under  
one roof for less than  
\$7.50 per sq. ft.  
thanks to

# IDEALITE

lightweight  
aggregate  
concrete

Paul R. Reddy,  
Architect



Producers of Idealite Lightweight Aggregate  
for Concrete and Concrete Products

821-17th Street • Phone 534-5144  
Denver, Colorado 80202

The sprawling General Services Administration stores depot in Denver made use of lightweight aggregate concrete in its barrel roofs and supporting beams and columns to achieve the required space, and appurtenances, within the budget. Lightweight concrete made it practical to design spacious, unobstructed, 40' by 80' storage bays. In addition, it is a type 1 fireproof structure—an important requirement for such a building. If you're considering the construction of a warehouse, apartment, office building or other such structure, investigate the advantages of Idealite concrete. It's strong, yet light in weight; 30% less than normal concrete. It offers superior insulating and acoustical properties, as well as low moisture absorption and low shrinkage.

*Ken R. White Company, Engineer*

