

FA
72015-
N 4195
V. 7 703-4



new mexico architecture

march-april 1965 50¢

●● IDEALITE lightweight concrete block gave me more house for the money ●●

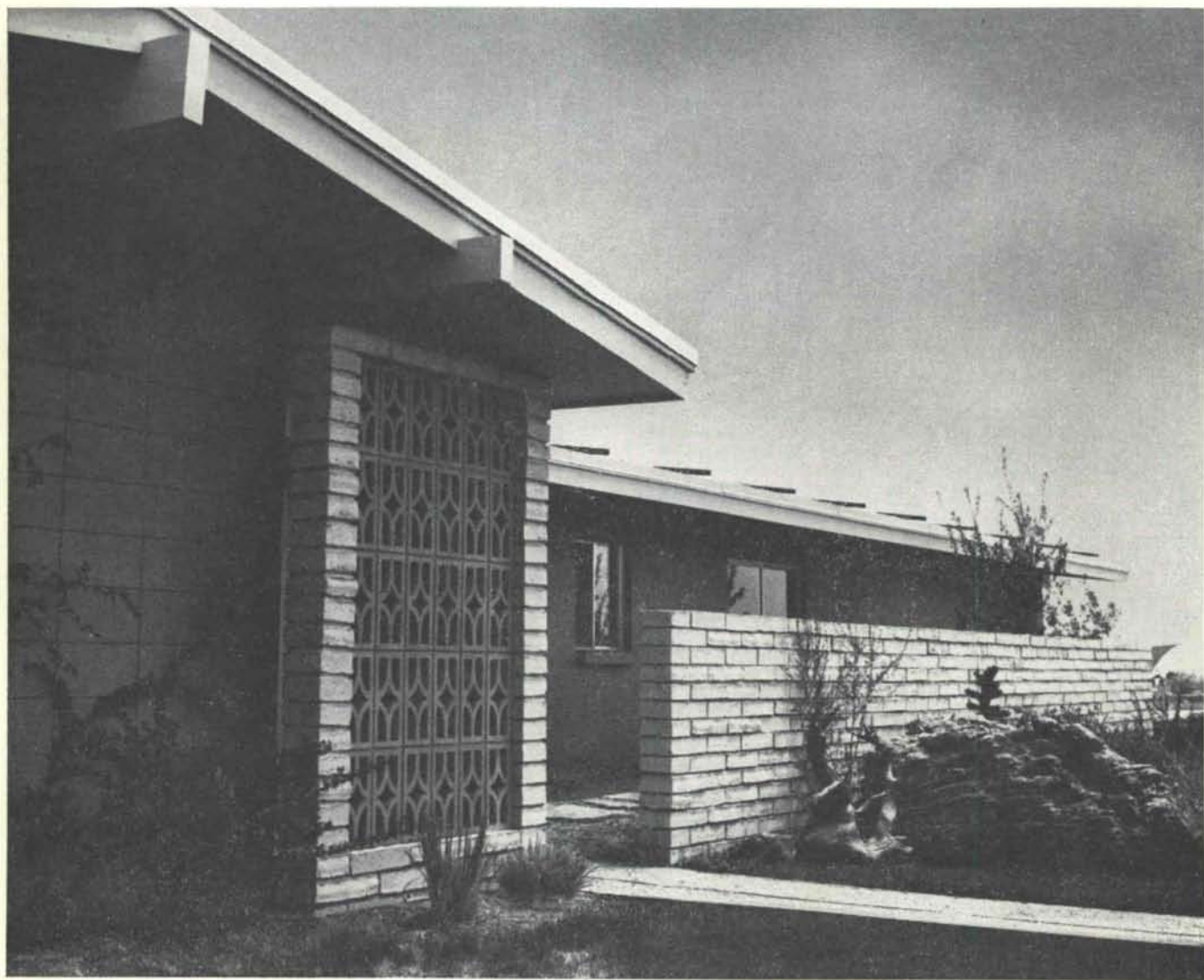
O. K. Sherwood, Owner

The use of lightweight concrete block in this Ft. Collins home gave the owner a charming, attractive house at a moderate cost. Today's concrete masonry has new versatility with dozens of new shapes, patterns and textures. Construction is quick and concrete block lasts a lifetime with a minimum amount of maintenance. It's easy to heat in the winter and invitingly cool in the summer. In addition, block offers superior insulating and acoustical properties and fire protection. If you're considering the construction of a home, office building, commercial building or other such structure, investigate the advantages of building it with Idealite lightweight concrete block.

IDEALITE

*Producers of Idealite Lightweight Aggregate
for Concrete and Concrete Products*

806 Boston Building • Phone 534-5144 • Denver, Colorado 80202



nma

vol. 7 • nos. 3 and 4 • mar. - apr. 1965 • new mexico architecture

Implementation of the Santa
Fe Master Plan 9

Third Annual Conference 13

Private Chapel at Circle
Diamond Ranch — Herbert Bayer 15

Family YMCA Building for Los Alamos 22

Index to Advertisers 26

(Cover — Chapel Tower, Circle Diamond Ranch — Ken Cobean — Photographer)

— Official Publication of the New Mexico Society of Architects, A. I. A. —

Society Officers

President—Bradley P. Kidder
Vice-President—Hugh Rowland
Secretary-Treasurer—Robert Mallory
Director—Joe F. Boehning
Director—Beryl Durham
Director—John McHugh
Director—Don Oswald
Director—John B. Reed
Director—W. Kern Smith

Publications Committee

Bainbridge Bunting)
John P. Conron) Co-Editors
Jean Rodgers Oliver—Photographer
W. M. Brittelle, Sr.—Advertising
Van Dorn Hooker—Circulation
Jason P. Moore
John B. Reed
Robert G. Mallory
Richard S. Clark
Charles E. Nolan, Jr.



Structural Steel

for New Mexico's thriving
building industry since 1942

Miller & Smith Mfg. Co., Inc.

500 Phoenix Ave. N.W. Station B, Box 6007

Albuquerque, New Mexico



TINGLEY COLISEUM
New Mexico State Fair Grounds

Bradbury and Stamm Construction Co., Contractors
Brittelle - Ginner & Dekker, Assoc. Arch. - Eng.
CREGO MASONRY UNITS USED THROUGHOUT

CREGO BLOCK CO., Inc.

6026 - Second NW
Albuquerque, N. Mexico
344-3475

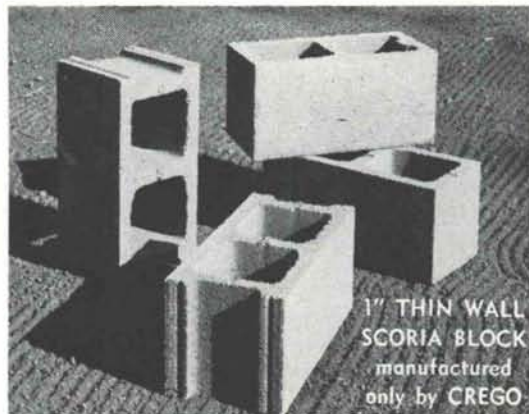
1311 Siler Road
Santa Fe, N. Mexico
983-7341

Makers of the finest Autoclave Blocks in New Mexico
Meeting or surpassing ASTM minimum code requirements

ARCHITECTS — BUILDERS

Visit Our Showrooms—displaying such
products as;

- Normal, all sizes of Scoria Blocks
- "SLUMPROK" Double faced hollowcore only by CREGO. Soft shadows & highlights, in 4 colors.
- SPECIAL, Lightweight (25#) Scoria Block with 1" sidewalls — extra large cores — only by CREGO —See Photo
- SHADOW, Sculptured & Sun Screen blocks in all sizes and varieties
- Miscellaneous materials of interest



1" THIN WALL
SCORIA BLOCK
manufactured
only by CREGO

**Before
this
begins**



Visit with our Communications Consultant

Call him at the blueprint stage to be sure communications in the building you're designing keep pace with growth.

His experience with every phase of modern communications can help you save costly construction errors, omissions and delays.

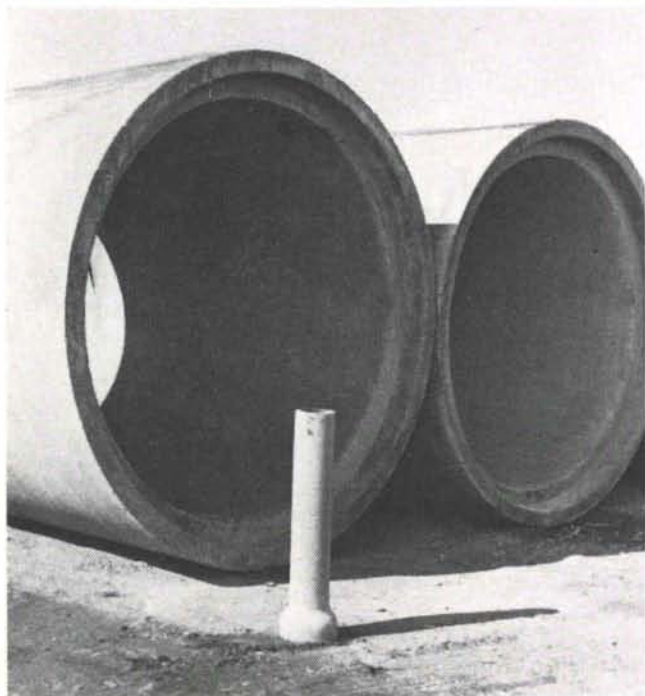
His advance knowledge can help you plan newly designed equipment and services.

Just call our Business Office and ask for a Communications Consultant to call you. No obligation, of course.



Mountain States Telephone
Serving You

MST 69-BP (1-65)



**Large or small
concrete pipe**
is not our only
product.

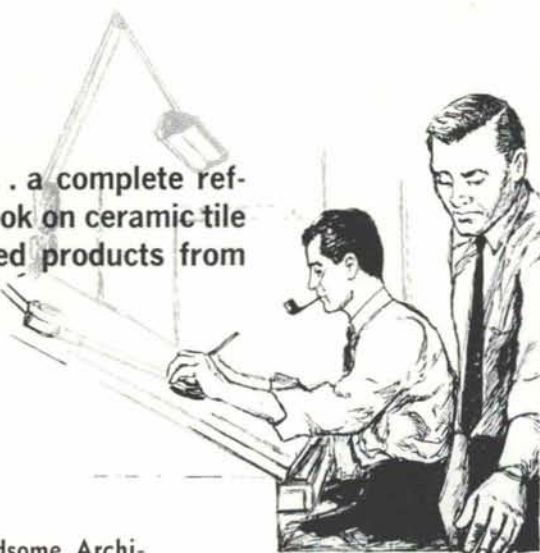
We design and
manufacture pre-cast and
pre-stressed concrete
products for Buildings
Highways, Bridges and Railroads.



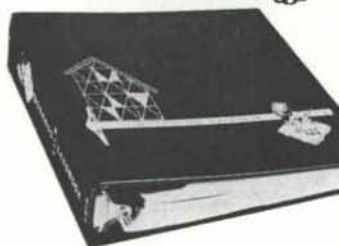
HYDRO CONDUIT CORPORATION

2800 SECOND ST., SW • ALBUQUERQUE, NEW MEXICO

At last . . . a complete reference book on ceramic tile and related products from Monarch.



This handsome Architects' Tile Handbook is yours for the asking. Add it to your library of working knowledge by writing MONARCH Tile today.



Five clearly indexed sections of detailed information and complete specifications on ceramic tile and related products are yours for instant reference in this free handbook. Monarch, maker of fine ceramic tile, has a continuing interest in architects and their problems. This volume of facts gained through years of research by MONARCH will become one of your most dependable, most used helpers.

Specify Monarch. It's the ceramic tile made by craftsmen for craftsmen.



Monarch
TILE MANUFACTURING, INC.



Factory and General Office, San Angelo, Texas

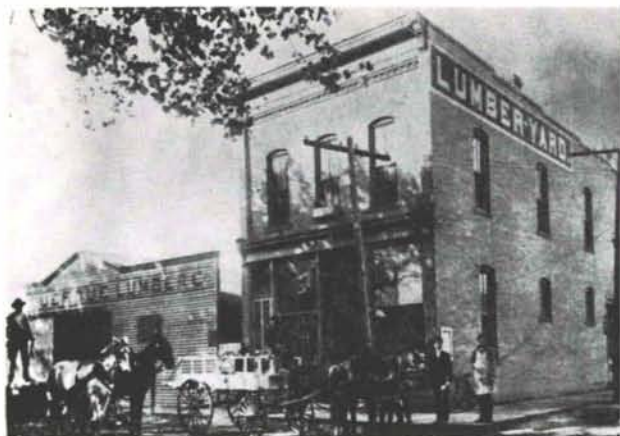


Specify Hydronics . . .

The science of heating and cooling with liquids

Your building and your clients deserve Hydronics • It allows freedom of design and is easily installed in any construction material • Client satisfaction through delivered comfort performance • Cleanliness built in mechanical durability and long life • Economy through low owning, operating and construction cost •

NEW MEXICO PIPE TRADES INDUSTRY PROGRAM



Helping You Build New Mexico for 84 Years

1881

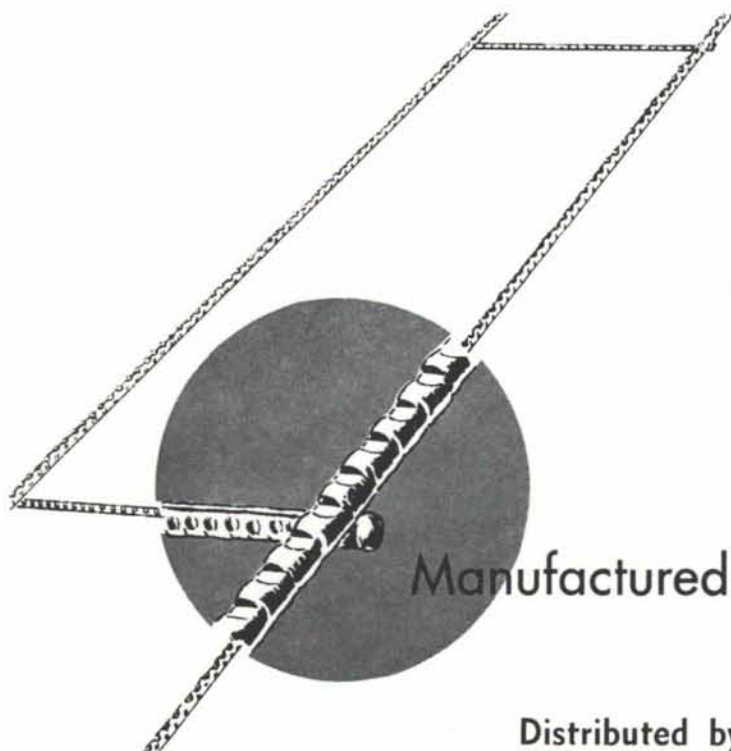
ALBUQUERQUE

Lumber COMPANY

1965

3825 Edith N.E. ❖ Edith Yard ❖ Phone 345-2511

Use **DUO-WIRE**... a better masonry wall reinforcement



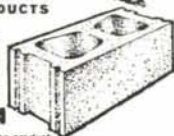
■ DUO-WIRE cross ties are full mesh welded and project slightly beyond side tension wires providing eight positive mortar locks every 16" in the wall.

■ DUO-WIRE cross ties are spaced every 16" (modular spacing) to avoid blocking core areas subject to other uses such as vertical reinforcement, grouting or filling of core with insulation, duct or conduit areas.

Manufactured by... **ATLAS**

QUALITY BUILDING PRODUCTS

CONCRETE MASONRY • STRESCRETE ROOFS AND FLOORS
PRESTRESSED and PRECAST STRUCTURAL CONCRETE
TONGUE and GROOVE FENCE BLOCK
STUCCO • CALCEMENT PAINT • SAKRETE
SUNSET STONE • SUNSET BRICK

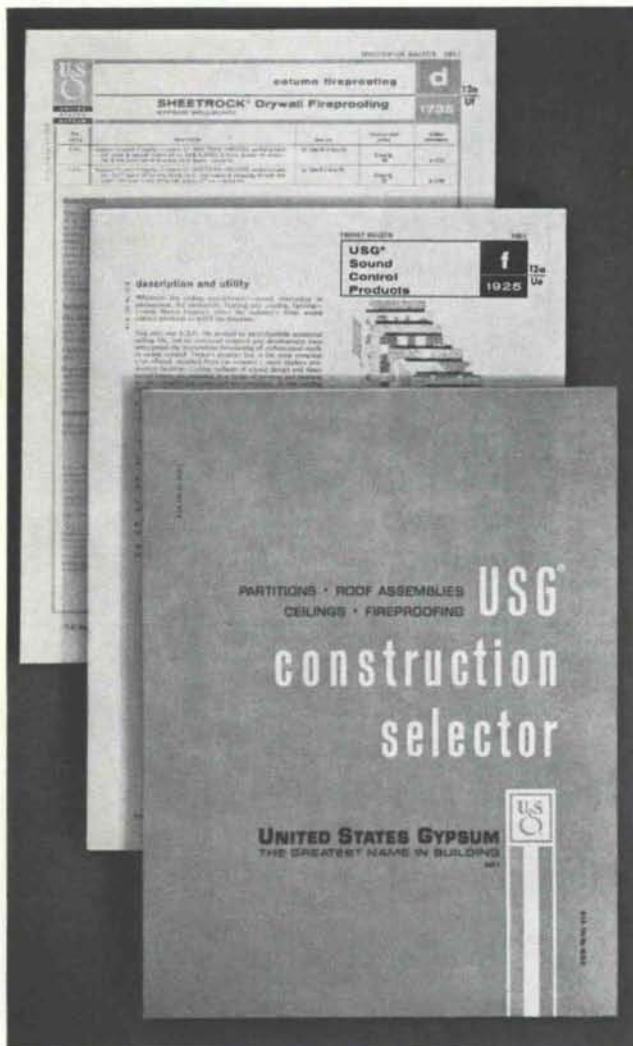


*a limestone product

Distributed by . . .

ALBUQUERQUE GRAVEL PRODUCTS • CREGO BLOCK COMPANY • EDGAR D. OTTO & SON • RIO GRANDE STEEL CO.

A NEW CONCEPT IN LITERATURE, ORGANIZED BY FUNCTION TO SAVE YOUR TIME



Partitions, ceiling systems, roof assemblies, structural fireproofing, wall furring—United States Gypsum has developed a practical method to conserve your time in selecting these important construction systems.

Instead of the old "product line" method of organization, U.S.G. has completely reorganized its technical literature by *function and end use!*

This means you can quickly and accurately compare functional properties of construction assemblies. And then, just as quickly, you can locate the data required for selection and specification of those assemblies.

For the first time, you will find *all* U.S.G. product literature in one place—in Section 12a of Sweet's 1965 Architectural File. Consolidated in this 300-page unit are:

New Construction Selector: Compares functional criteria of all U.S.G. work-together products and systems. Simplifies selection from 140 system variations.

New Systems Brochures: 37 folders provide exact data, details, and specifications needed for each basic assembly.

New Product Catalogs: 9 separate folders supply additional information on components used in systems.

Your U.S.G. representative will be pleased to explain this new time-saving literature program in your office. He also can supply extra folders for your staff. To arrange for an appointment at your convenience, please call your U.S.G. district office.

UNITED STATES GYPSUM
101 S. WACKER DRIVE, CHICAGO, ILL. 60606

