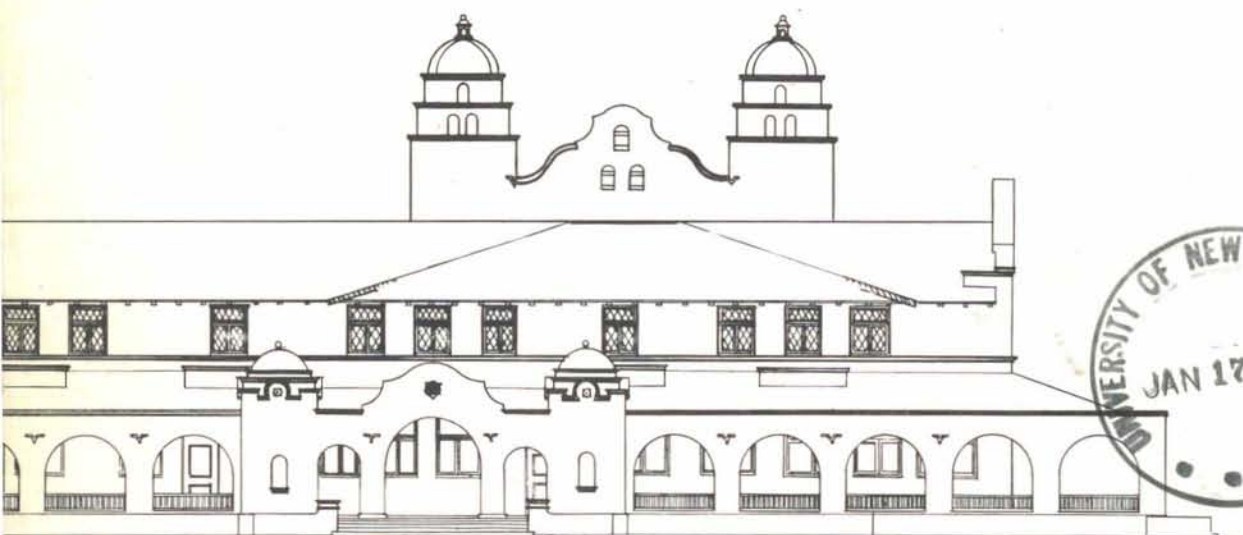
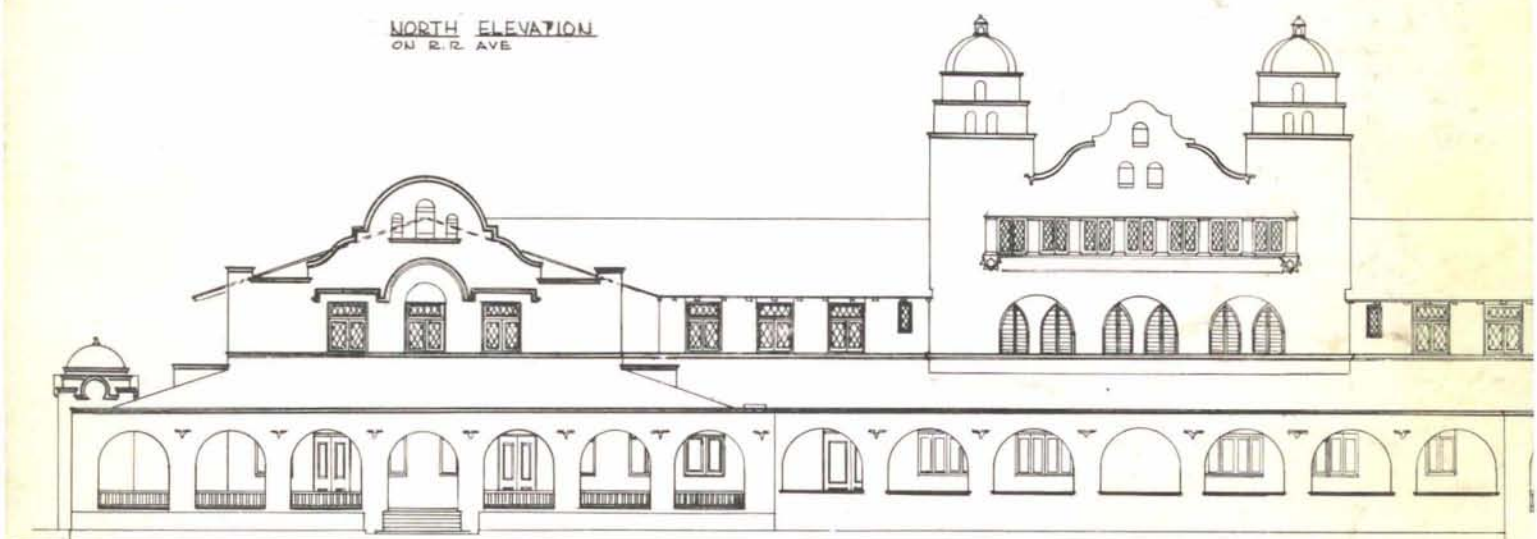


72015
N4195
V. 6701-2

new mexico architecture



NORTH ELEVATION
ON R.R. AVE



WEST ELEVATION
ON FIRST STREET

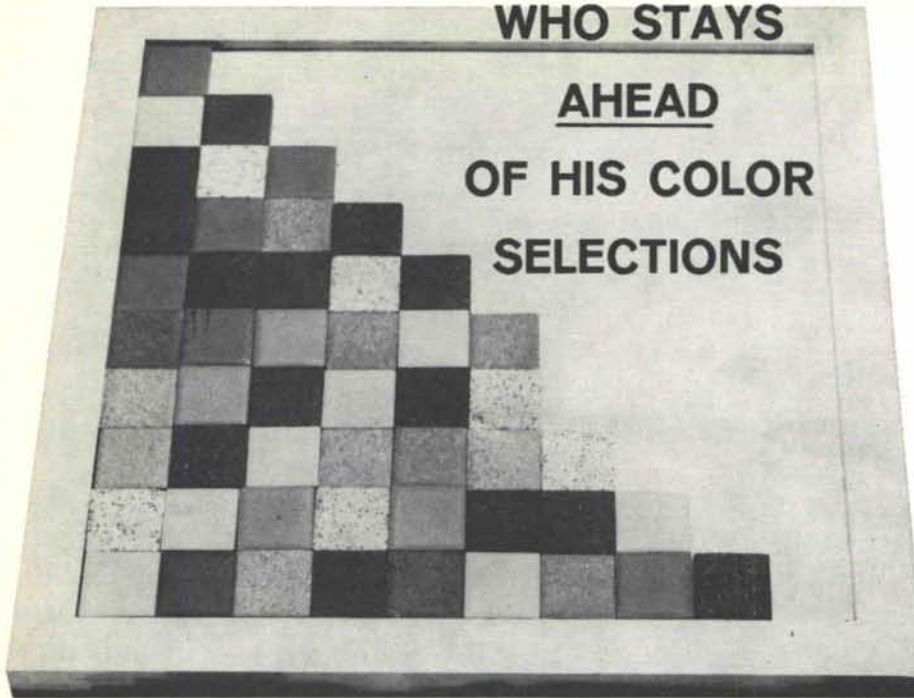


EAST ELEVATION



FOR THE ARCHITECT WHO STAYS

AHEAD OF HIS COLOR SELECTIONS



A handy tool for the creation of individual and distinctive designs by architects using Monarch 1" x 1", 1" x 2", or 2" x 2" unglazed ceramic mosaic tile. Available to architects on request and at no obligation, of course.

An exclusive part of the personalized service offered by Monarch, the Architect's Design Board facilitates the selection of color percentages for distinctive and original designs. The Design Board takes up where tile manufacturer's color combination plates leave off, enabling architects to do exclusive work with basic colors and accents. Design boards are made up, on order, at the Monarch plant* and delivered with the range and percentage of colors specified by the architect.

Monarch Design Boards eliminate costly and time-consuming phone calls, personal visits and correspondence with manufacturers, contractors and clients. Design Boards permit clients to see exact color combinations as a safeguard against misunderstanding or dissatisfaction.

- ◆ MONARCH glazed ceramic wall tile
- ◆ Kristaline floor tile
- ◆ Ceramic Mosaic floor tile
- ◆ Summitville quarry tile
- ◆ Trim and angles
- ◆ Feature strips
- ◆ Decorative and sculptured tile
- ◆ Mono-Score scored tile
- ◆ Precast Terrazzo
- ◆ China bathroom accessories
- ◆ L&M grouts and mortars
- ◆ Elmer's tile saws
- ◆ Contractors' and mechanics' supplies



Monarch[®] TILE



*Also available on request: our complete color range shown by group and Architectural File No. A61B. Write to our factory and general office in San Angelo, or ask us for the name of the nearest Monarch Tile distributor.

Monarch Tile Manufacturing, Inc., Factory & General Office, San Angelo, Texas

New Mexico office: 414 Second St. S.W., Albuquerque, N. M.

nma

vol. 6 • nos. 1 and 2 • jan.-feb. 1964 • new mexico architecture

Notes and News 5

Conference on Architecture and the Allied Arts
—John MacGregor 9

Architecture and the Fred Harvey Houses
—David Gebhard 18

Index of Advertisers 26

(Cover—Elevation of the Alvarado Hotel;
redrawn from the original working drawings by Wolfgang Braun)

—Official Publication of the New Mexico Chapter, American Institute of Architects—

Chapter Officers

President, John McHugh
Vice-President, John Reed
Secretary, William Buckley
Treasurer, John J. Heimerich
Director, Max Flatow
Director, Hugh Rowland
Director, Don Oschwald
Director, Garlan Bryan
Director, E. C. French

Magazine Committee

Bainbridge Bunting)
John P. Conran) Co-Editors
Jean Rodgers Oliver
—Staff Photographer
W. M. Brittelle, Sr., Chairman
—Advertising Director
John J. Heimerich, Treasurer
Van Dorn Hooker, Circulation
John McHugh, Ex-Officio



Blumcraft

OF PITTSBURGH

NEW

classic tapered aluminum
post 149-S. Sculptured pattern
shown. Available with a plain
surface or inlaid natural wood.

Complete catalogue of railings
and grilles available upon request.

Permanent display - Architects
Building, 101 Park Ave., New York, N.Y.