

NA195
65 NOV 12

new mexico architect



november-december 1963 35¢

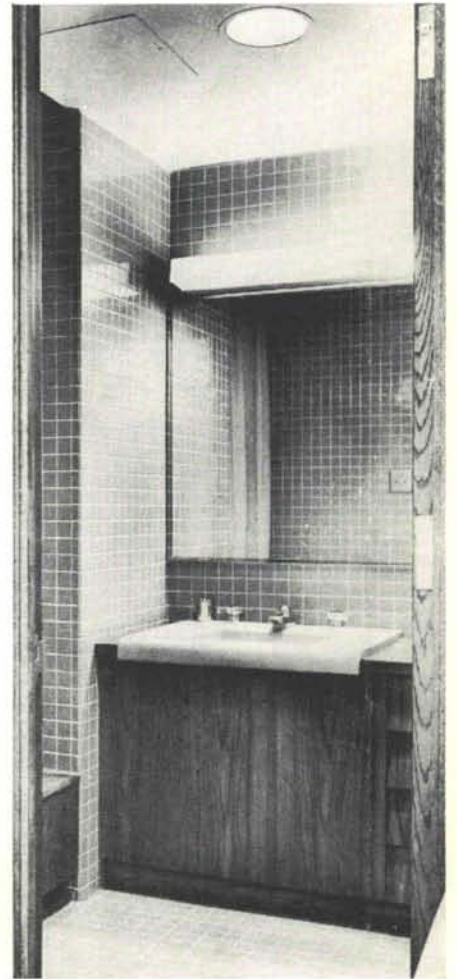


Monarch[®] TILE

...REACHES A NEW HIGH IN MILE-HIGH DENVER



The magnificent new home office building recently finished in Denver, Colorado, of Western Reserve Federal Savings, contains more than 16,000 square feet of Monarch Tile on walls and floors.



Monarch[®] **TILE**

A typical men's washroom in the Western Federal Savings Building, showing the installation of Monarch unglazed floor tile, and ceiling-high walls of Monarch $4\frac{1}{4} \times 4\frac{1}{4}$ glazed wall tile.

Monarch[®] **TILE**

Typical executive's private washroom in the new Western Federal Savings Building, showing the installation of Monarch unglazed floor tile, and Monarch glazed wall tile, emphasizing the matching joint 2×2 tile on both floor and walls.

MONARCH TILE MANUFACTURING, INC., FACTORY AND GENERAL OFFICE, SAN ANGELO, TEXAS

Member, Tile Council of America, Member Producers Council, Division Offices in Five Cities, Showrooms and Warehouses in 15 Cities

New Mexico office: 414 Second St. S.W., Albuquerque, N. M.

nma

vol. 5 • nos. 11 and 12 • nov.-dec. 1963 • the new mexico architect

Two Controversial Issues
—The Proposed School Building Code for New Mexico
—The Proposed Bernalillo County Zoning Ordinance 7

A New Mexico Garden
—by Robert Hooton 17

Notes on Reading
—Bainbridge Bunting 23

Index of Advertisers 26

(Cover—Granite sculpture by Jo Roper, J. L. Rust Residence.
Jean Rodgers Oliver, photographer)

—Official Publication of the New Mexico Chapter, American Institute of Architects—

Chapter Officers

President, John McHugh
Vice-President, John Reed
Secretary, Don Schlegel
Treasurer, John J. Heimerich
Director, W. Kern Smith
Director, Max Flatow
Director, John P. Conron
Director, Garland Bryan
Director, E. C. French

Magazine Committee

Bainbridge Bunting)
John P. Conron) Co-Editors
Jean Rodgers Oliver
—Staff Photographer
W. M. Brittelle, Sr., Chairman
—Advertising Director
John J. Heimerich, Treasurer
Van Dorn Hooker, Circulation
John McHugh, Ex-Officio



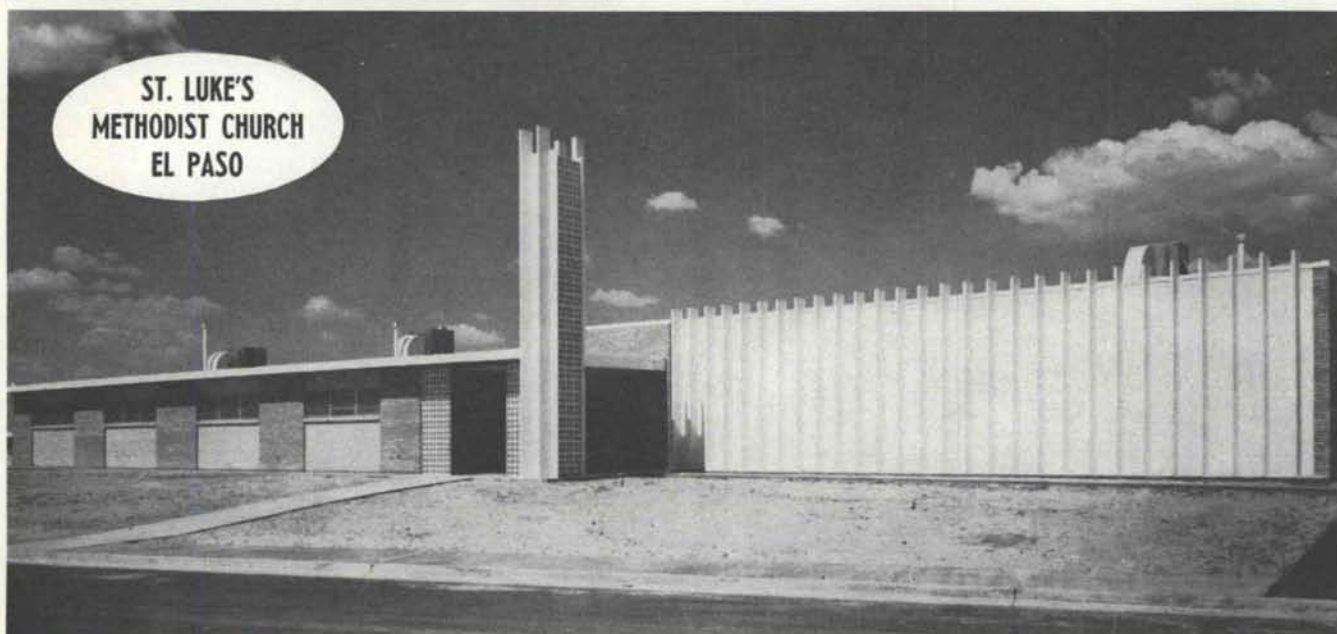
Structural Steel

for New Mexico's thriving
building industry since 1942

Miller & Smith
Mfg. Co., Inc.

500 Phoenix Ave. N.W. Station B, Box 6007

Albuquerque, New Mexico



ST. LUKE'S
METHODIST CHURCH
EL PASO

Architects and Engineers: Campbell, Wells and Associates, El Paso Texas.

**always ask for
the BEST... ask for...**

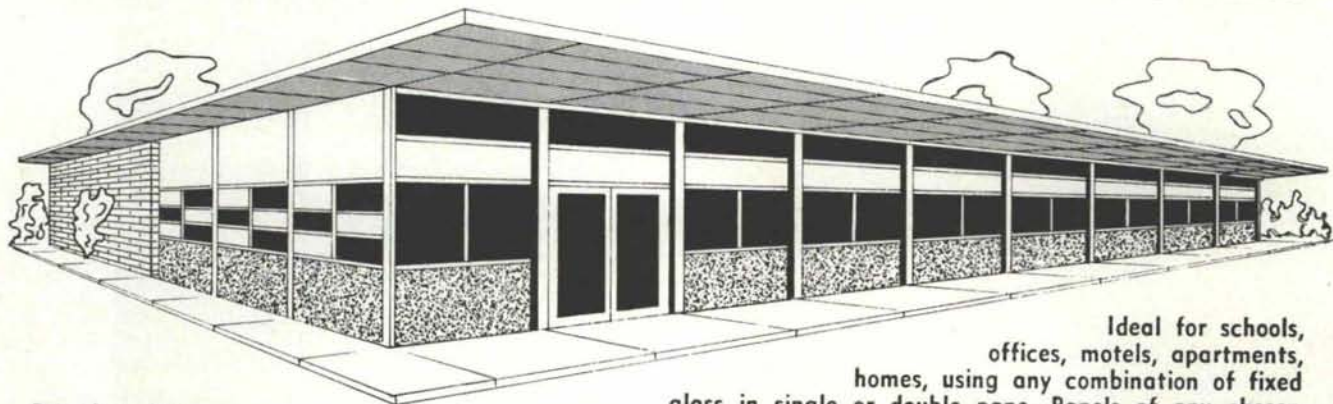


STRUCTURAL CONCRETE INC.

200 N. GLENWOOD DRIVE • EL PASO, TEXAS

NEW WINDOW WALL DESIGN VERSATILITY AND ECONOMY... WITH VERSAWAL

ALUMINUM WINDOW WALLS • FREEDOM FOR FUNCTIONAL STYLING



Priced as low
as \$2.00 per sq. ft.
installed, depending upon
types of windows,
glass and panels used.

MANUFACTURED IN ALBUQUERQUE, N. M. BY

WELCH-ERWIN CORP.

Ideal for schools,
offices, motels, apartments,
homes, using any combination of fixed
glass in single or double pane. Panels of any chosen
materials up to 1 9/16" thickness. Swinging or sliding
doors, ventilating sections with sliding, projected, hopper,
jalousie, single or double hung windows. Specially de-
signed to permit expansion or contraction in each
panel. Permanently water and weather sealed.

4019 C Edith Blvd., N. E. • Phone 344-3547
P. O. Box 681 • Albuquerque, New Mexico

BUILDING the SOUTHWEST

SCHOOLS... RESIDENCES...
CHURCHES... COMMERCIAL
BUILDINGS... HIGHWAY
STRUCTURES

Only a few of the many
uses for pre-stressed concrete.

TALK TO YOUR
MARTIN MARIETTA REPRESENTATIVE

2800 SECOND ST. SW
ALBUQUERQUE, NEW MEXICO

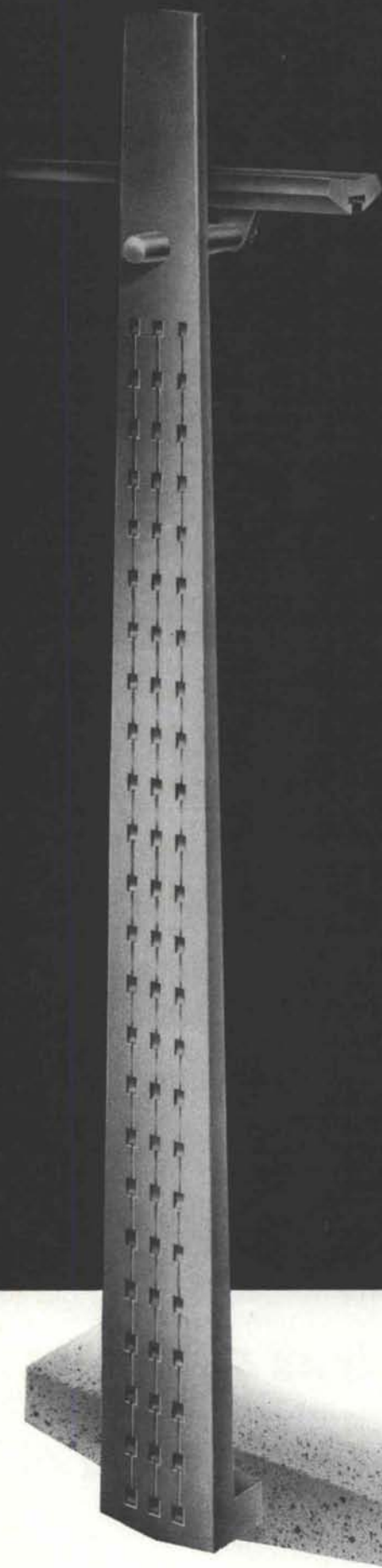
A CONSTRUCTION
MATERIALS DIVISION OF



MARTIN

MARIETTA

SOUTHWEST DISTRICT
(FORMERLY AMERICAN MARIETTA)



Blumcraft
OF PITTSBURGH

NEW

classic tapered aluminum
post 149-S. Sculptured pattern
shown. Available with a plain
surface or inlaid natural wood.

Complete catalogue of railings
and grilles available upon request.

Permanent display - Architects
Building, 101 Park Ave., New York, N.Y.