

FAL Per.
NA
1
N4
v. 32
no. 1
c. 2

FAL
Ceased
Periodical

STORAGE

UNIVERSITY OF NEW MEXICO-GENERAL LIBRARY



A14420 327506

New Mexico

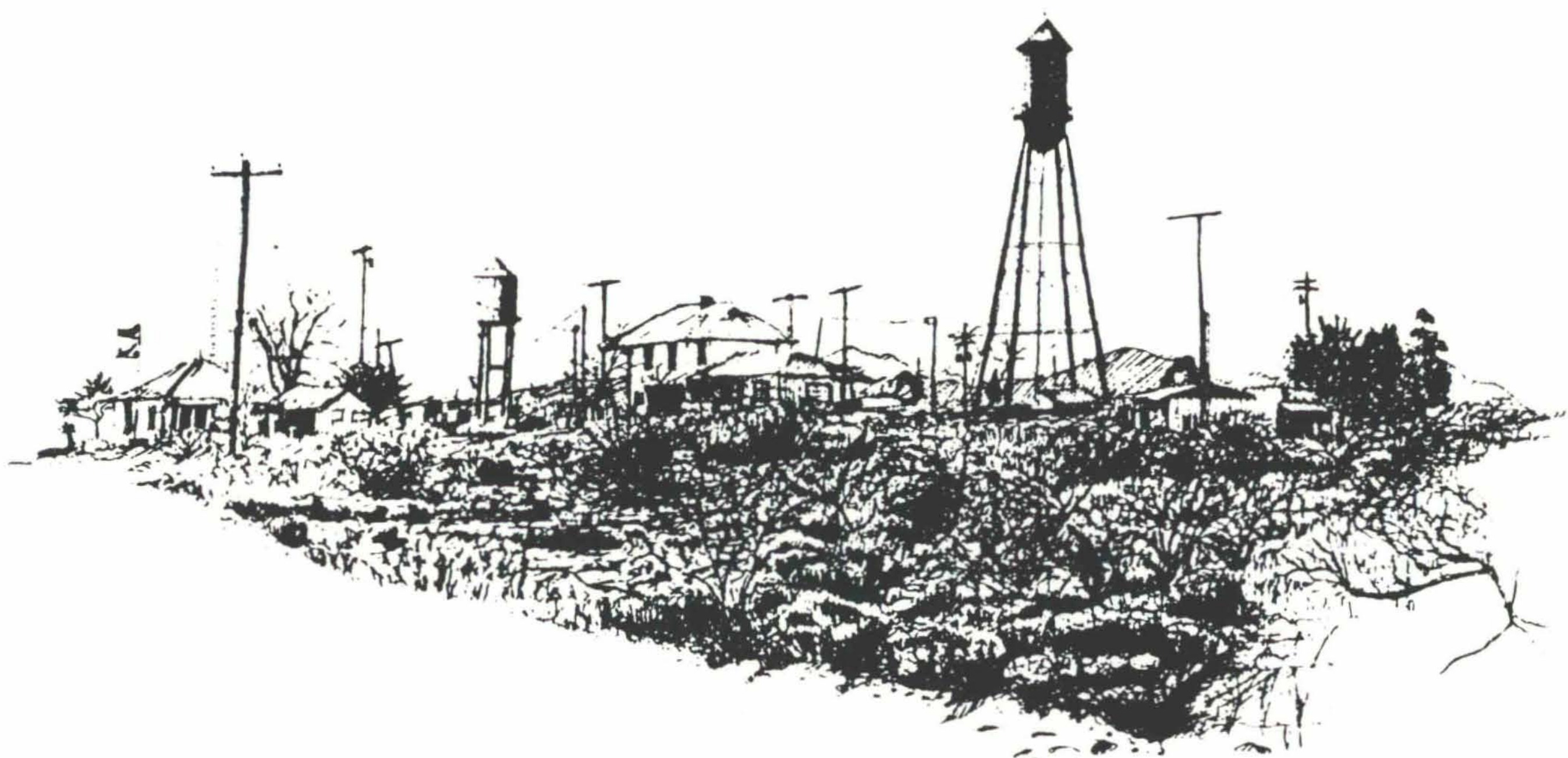
ARCHITECTURE

New Mexico/AIA
1990 Design Awards Issue


WINTER 1991

\$3.00





COLUMBUS, NEW MEXICO — If Pancho Villa's ghost happens to float into town today, he's in for a big surprise. The place he did his best to destroy that dark night (March 9, 1916) 75 years ago is alive, well and thriving. Villa's last visit with his guerrillas left 18 Americans dead and much of the town ablaze. U.S. Army soldiers and townspeople killed 100 Villistas. But, the town declined and it faded further when the Army post was closed in the 1930s and further still when the railroad took up its tracks in 1961.

Continued on page 16 

**DAVIS &
ASSOCIATES
INC.**

**P O Box 2184
Santa Fe
New Mexico
87501**

**GENERAL
CONTRACTORS**

**(505)
988-2894**



• **vol. 32 no. 1** •

□ □ □ □
As has been too usual in the past two years, this issue is late! It has been difficult to get copy on time and, because of the current recession, advertising has been slow in coming to us, in spite of Carleen's efforts.

Accordingly, we have decided to try to produce **New Mexico Architecture** on a quarterly basis. This issue is the first for 1991 with, we hope, a second issue to follow shortly.

□ □ □ □
A call to all members of the AIA in New Mexico. The editor of this magazine wants to hear from you when you have: **a)** something to say, **b)** a project to announce or show to our readers (a black & white photograph with an explanatory caption or short story will be most welcome) and **c)** a finished project that can be shown to our readers. As you all know space has been, and because of our advertising revenues remains, tight. Unfortunately, therefore, we may not have the space needed in a timely fashion. Accordingly, call Carleen or myself first, if you wish, or better still, send me a photograph of the finished project and I or Carleen will contact you. Publication of projects from across the State have been sorely lacking the last several issues. We want to change that with your help.

□ □ □ □
We here wish you all a recession free 1991 and onward. **JPC**

□ □ □ □
The cover of this issue of **NMA** is sponsored by Holmes Sabatini Associates, Architects.

Winter 1991

• **new mexico architecture**

☞ The Editor's Column	3
Columbus, NM	2
NMA News	7
Kick Off of National Preservation Week	
The Last Conquistador: Juan de Oñate	
Gastra Designed Hotel for Santa Fe Plaza	15
Important Santa Fe Trail Book Available	
Spaceweek: Space Center Hosts Week of Fun	
Chaves County Historical Society Announces New Book	
1990 New Mexico AIA Albuquerque Chapter Design Awards	9
United States Port of Entry	10
Holmes Sabatini Associates, Architects	
Kistler Collister's Fashion Square	11
Patrick McClernon Architects/Planners, P.A.	
Barelas Coffee House	12
Berry Langford, Architect	
UNM Health Sciences & Service Building	12
Holmes Sabatini Associates, Architects	
Private Residence Addition	13
Siegel Design, Architects	
Restaurant André	13
Patrick McClernon Architects/Planners, P.A.	
St. Joseph Rehabilitation Center	14
FMBSM Architects, Inc.	
Residence Exterior Addition	14
Berry Langford, Architect	
Remodel, Automotive Body Shop	14
Richard Yates Architects, Inc.	
Professional Directory	17
Advertisers' Index	18

(Cover—United States Port of Entry, Columbus, New Mexico, Holmes Sabatini Associates, Architects — ©Kirk Gittings/Syntax, Photographer)

—Official Publication of the New Mexico Society of Architects, A.I.A.—

Society Officers

President—Tomás Méndez, AIA
President-Elect—Michael Beltran, AIA
Secretary—David Carr, AIA
Treasurer—Joe Browning, AIA
Director—Edward Mazria, AIA
Director—George Trosky, AIA
Director—Robert J. Ball, AIA
Director—George Bennett, AIA
Director—Terrance J. Brown, AIA
Director—Bill Freimuth, AIA
Director—Patty Willson, AIA

New Mexico Architecture - Committee

John P. Conron, FAIA/FASID—Editor
Carleen Lazzell—Associate Editor/Advertising Director
Barbara MacPherson—Advertising Assistant

George Anselevicius, FAIA,
Terrance J. Brown, AIA
Marjorie Hooker, AIA
Van Dorn Hooker, FAIA
Carolyn Kinsman, Designer
Christopher Larsen, AIA
Charles E. Nolan, Jr., AIA

Christopher Wilson, Architectural Historian

International Standard Serial Number—0545-3151

COLORANSWERS™

Today's Answers to Tomorrow's Color Questions

- ♦ The industry's most complete color specifying system
- ♦ Features large color samples organized in a compact, easy to use kit
- ♦ Over 1,200 interior and exterior colors
- ♦ Quality Products for over 120 years

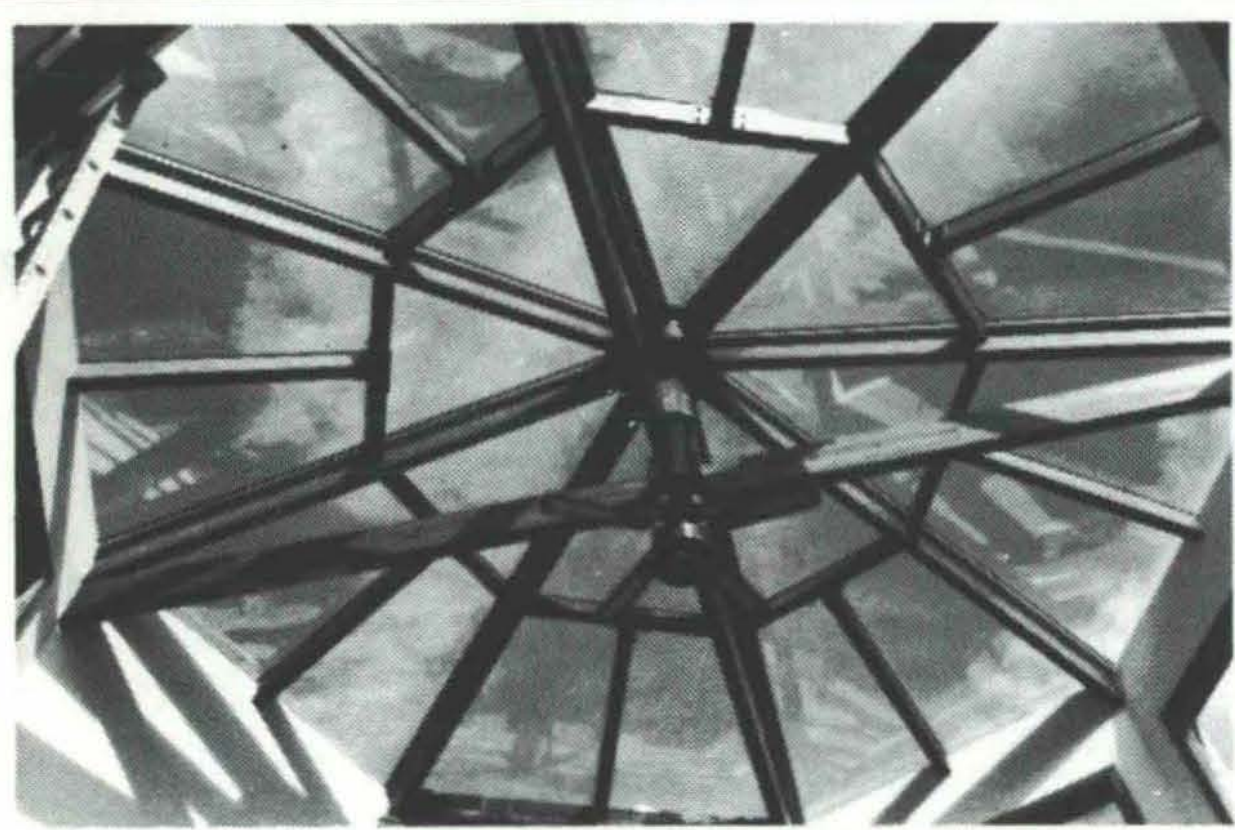


Call our 800 number for:

- ♦ Assistance with spec writing
- ♦ Personal answers
- ♦ Call 800-321-8194
800-362-0903 (In Ohio)



Ask Sherwin Williams
— Architects Do



*If you can think it...
we can glaze it.*

New Mexico's specialty glazing experts.

- SureSeal™ skin glazing can do any geometric shape, slopes or vertical
- You determine the glazing you want
Low-E, Heat Mirror, solar tints
- Components only or installed

Brother Sun / US Sky

2907 Agua Fria, Santa Fe, NM 87501

1-800-323-5017 • FAX 505-471-5437

505-471-5157

Call or Fax us for quotes, bids, and design assistance

**Pella has
wood windows
and doors
for every
home and office.**

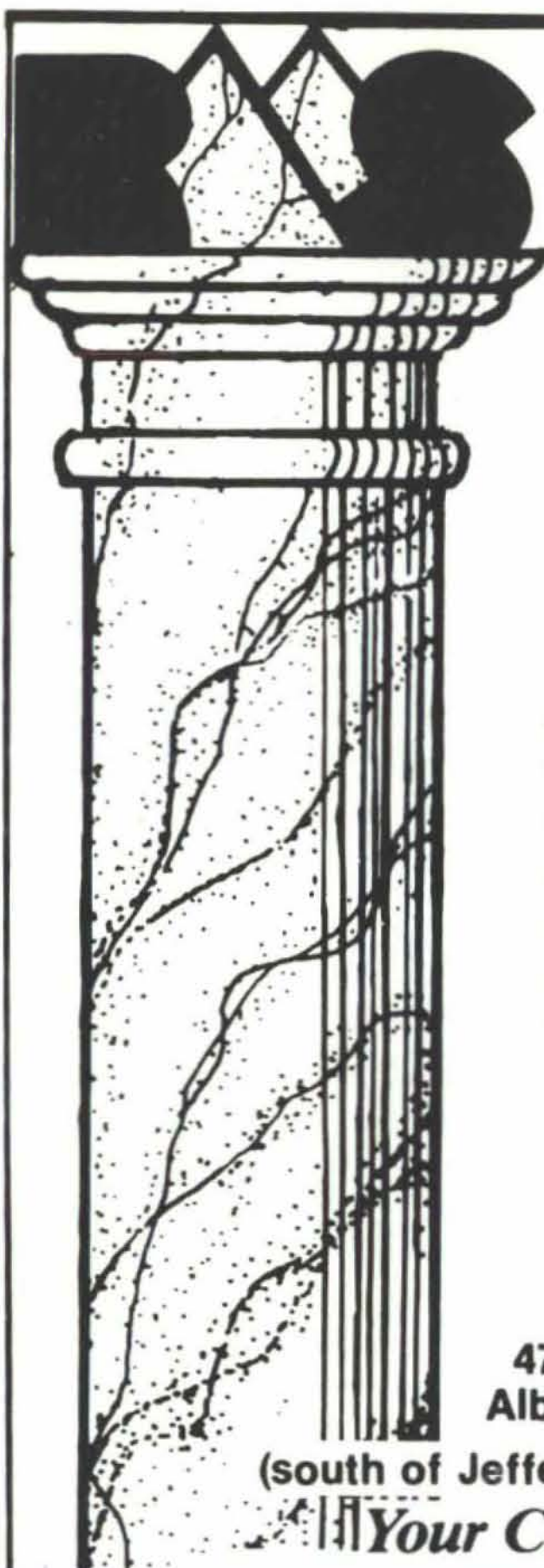
**NEW CONSTRUCTION
REMODEL / REPLACEMENT**

**“When Quality Counts”
Call**

Pella Rio Grande Inc.



Albuquerque	(505) 345-3501
Santa Fe	(505) 984-2210
El Paso	(915) 833-3066
NM Toll Free	1-800-227-5240



• MARBLE
• GRANITE
• TRAVERTINE
• SLATE
• LIMESTONE
• SANDSTONE
• CANTERA
— — — FOR — — —

- Kitchen counters
- Vanity tops
- Fireplace surrounds
- Flooring
- Interior/Exterior cladding
- Installation/Restoration
- Architectural Assistance for ANY type of Natural Stone

505-345-8518

ROCKY MOUNTAIN
STONE COMPANY INC.
4741 Pan American Frwy. N.E.
Albuquerque, New Mexico 87109

(south of Jefferson on West Frontage Road)

Your Custom Marble Source

Bradley

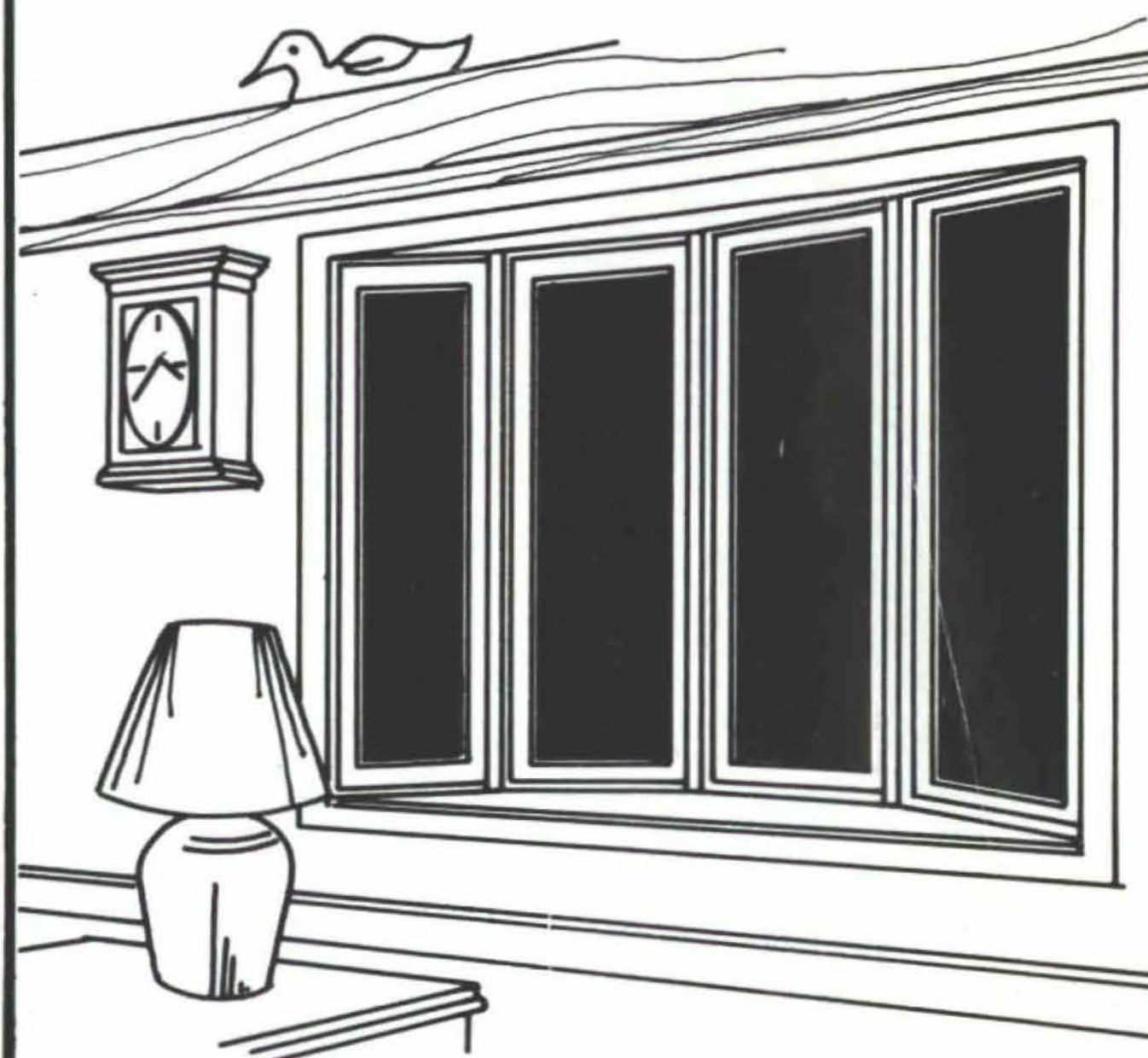
GENERAL CONTRACTORS
THE FIRST NAME
IN NEW MEXICO CONSTRUCTION

STATEWIDE TOLL FREE NUMBER 1-800-432-5476
(505) 823-2800
8300 Washington NE • Albuquerque, NM 87113

SPECIALIZING IN
Pre-engineered Buildings
Concrete Structures
Commercial and Office Buildings



How Does A Window Bend? Weather Shield Does It... Beautifully.



They're called Casement Bows. And they come in 4, 5 or 6-wide units.

These all-wood casements open wide for easy inside cleaning, are weather-tight and very energy efficient!

You'll love the decor accent inside, and the neighbors will be impressed with your style outside.

See this elegant Weather Shield casement bow, along with many surprise options, at the Weather Shield outlet store near you.



Western Building Supply Co., Inc.
4201 Paseo del Norte, NE
Albuquerque, New Mexico 87113
(505) 823-2500

PRESERVATION PLAN ON IT



Planning on restoring a house, saving a landmark, reviving your neighborhood?

No matter what your plans, gain a wealth of experience and help preserve our historic and architectural heritage. Join the National Trust for Historic Preservation and support preservation efforts in your community.

Make preservation a blueprint for the future.

Write:

National Trust for Historic Preservation
Department PA
1785 Massachusetts Ave., N.W.
Washington, D.C. 20036



WOODEN
IT BE
NICE?
IT IS.

Our 10,000 square foot milling plant produces fine wood moldings in an almost unlimited array of species

Your design, our design or matching designs for restoration. Kitts makes it. And at prices that make it nice.

KITTS ENTERPRISES, INC.

SPECIALTY MATERIALS AND HARDWARE FOR ARCHITECTS,
CABINET MAKERS AND CONTRACTORS

(505) 345-8135

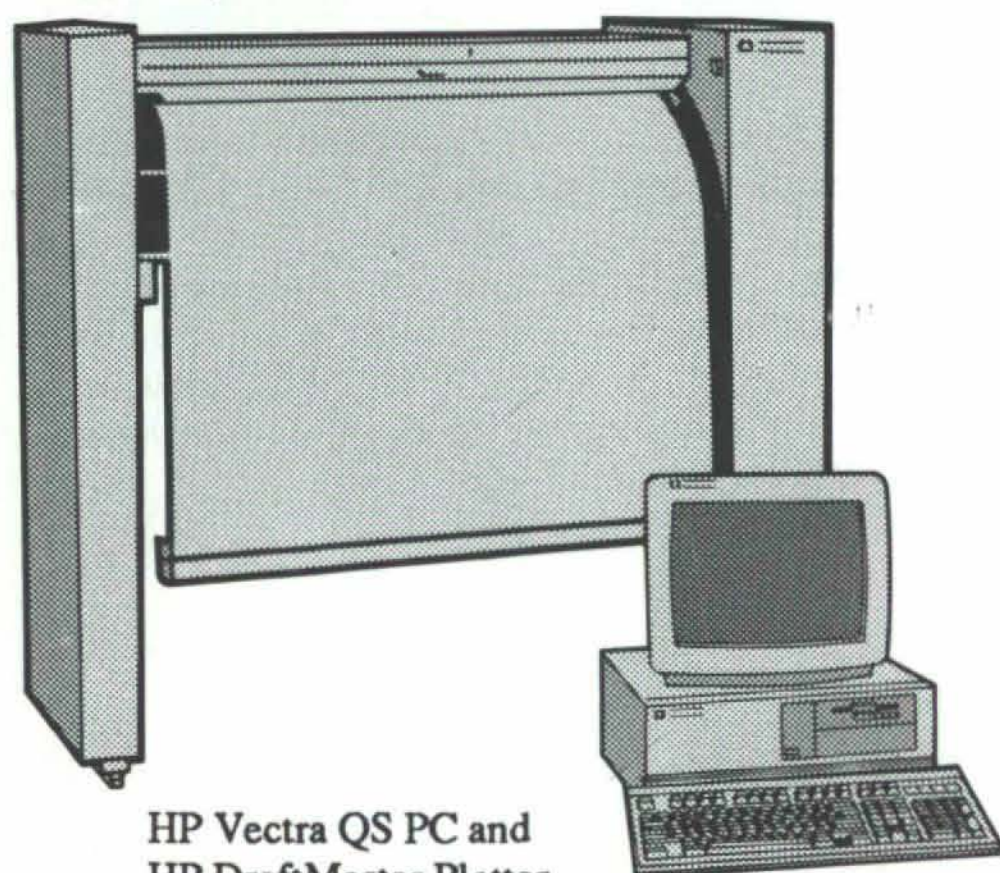
5815 EDITH BOULEVARD NE • ALBUQUERQUE, N.M. 87125

CALL US TOLL FREE:

New Mexico: 1-800-432-6820 • Other States: 1-800-545-6104

HOLMAN'S
has it!

Create a PC-based CAD system as individual as your designs



HP Vectra QS PC and
HP DraftMaster Plotter

Whatever your design or drafting requirements, HP has a broad line of PC-based CAD hardware products to meet your individual needs.

From PCs, color displays and graphics cards to printers and plotters, HP provides a broad line of CAD products to help you work faster and smarter.

- Reliable, high-performance 80286- and 80386-based HP Vectra PCs
- Superior-quality plotters and printers
- High-resolution 16- and 20-inch displays
- A dependable, high-speed, high resolution graphics card

And because they're fully compatible with industry standards, you can customize your CAD system to meet your specific application.

Come in for a demonstration today.



Quality products for the world of Science, Engineering & Business.

401 WYOMING NE • 265-7981

VISA • MASTER CARD • AMERICAN EXPRESS

Store Hours: Mon-Fri 8:00 - 5:30 Sat 10:00 - 3:00



Kick Off of National Preservation Week



(©Kirk Gittings/Syntax, Photographer)

The Albuquerque Chapter, AIA, held a group photo session on Saturday, May 11, 1991, at the KiMo Theater, Albuquerque, New Mexico. This event was held in recognition of "National Preservation Week." The photograph will be entered in a nationwide contest sponsored by the National Trust for Historic Preservation and will be on display at their annual conference this coming October in San Francisco. Copies of the photo are available for purchase from the Albuquerque Chapter/AIA office (505) 255-2170.

"THE LAST CONQUISTADOR: JUAN de OÑATE AND THE SETTLING OF THE FAR SOUTHWEST" by Marc Simmons, University of Oklahoma Press, 1005 Asp Avenue, Norman, OK 73019, (405) 325-5111. 224 pps., 24 illustrations, bibliography, \$24.95.

A biography of Don Juan de Oñate, the first colonizer of the old Spanish borderlands, has been published by the University of Oklahoma Press.

The Last Conquistador: Juan de Oñate and the Settling of the Far Southwest, by Marc Simmons, chronicles the life and frontier career of Oñate, who was the central figure in a string of dramatic episodes associated with the colonization of what was a far corner of the Spanish Empire.

In 1598, Oñate led a formidable expedition of settlers on an epic march northward to the upper Rio Grande Valley. This remote frontier he renamed Nuevo Mexico (New Mexico), changing it from La Tierra Nueva, the New Land, a name given it by the early Spaniards. There he established the first European settlement west of the Mississippi, launching an important chapter in early American history.

In his activities, Oñate displayed qualities typical of Spain's 16th-century men of action; in his career can be found summation of the motives, aspirations, intentions, strength and weaknesses of the Hispanic pioneers who settled the Borderlands.

For this first full-length account of Oñate's life, Simmons has drawn upon much new material that has emerged from Spanish archives in the last decade. Simmons paints a vivid picture of the multifaceted Oñate and his exploits, and also notes the political, social and cultural forces that contributed to the explorer's successes and failures. In addition, Simmons places the entire story within the larger context of national and international development.

Oñate represented the end of a tradition, Simmons writes. "He was the last conquistador, the final knight in burnished armor who sallied northward under authority of Cross and Crown to find wealth, glory and fame."

Marc Simmons has his doctoral degree from the University of New Mexico and has published many articles and books on the American Southwest.

News continued on page 15

Don't get caught with your plants down

Design with
healthy plants
from the start!

Plant Designs has a great selection
of top-quality indoor plants
and accessories

- * Exotic and Unusual Plants
 - * Atrium-sized Trees
 - * BIG Cactus
- * Designer Containers
- * Design and Installation

**plant
designs**

3219 Candelaria NE, Albuquerque, NM
888-5821

*Which leading
window gives you
more to spec?*



The ultimate
wood window™

R4

Insulates better



Improves comfort



Blocks fabric-fading rays



Quiets unwanted street
noise



Promotes plant growth

Draw your own conclusions.



Tortuga, Inc.

WINDOW PLANNING & DESIGN CENTER

Albuquerque 345-2671

Santa Fe 982-2732

New Mexico Toll Free 1-800-287-2873

License #24507

Insurance for the Design Professional
New Mexico's
Professional Engineers
and Architects

**Alexander
& Alexander**

**BONDING &
INSURANCE**

Since 1925

Call Bob Dean, Professional Liability Specialist

TELEPHONE (505) 883-8282

N.M. WATS 1-800-432-5882

Suite 200
6000 Uptown Blvd. NE

P.O. Box A
Albuquerque, N.M. 87103

WHO WANTS THE ARCHITECTS' BUSINESS?

The advertisers in this, your official magazine, want your business. They are attuned to *your* interests and have made the effort to seek you out here in New Mexico Architecture, to ask for that business. Take just a moment and make special note of who they are. When the opportunity arises, let them show you what that keen interest means in terms of outstanding products and services.

from Tennessee Architect-



1990 New Mexico AIA Design Awards

The Albuquerque chapter of the American Institute of Architects seeks to recognize and honor the architectural projects designed and completed by New Mexico AIA members. The 1990 NM AIA Design Awards call to honor projects completed subsequent to January 1, 1986. Of the thirty-six projects submitted, nine were chosen to be awarded for their architectural merit in three distinct categories. Two awards of honor were presented, representing the highest distinction of all projects submitted. Four awards of merit were presented and three projects were given honorable mention.

A panel of four distinguished architects from the Arizona Society of Architects, AIA was chosen to select amongst all projects submitted. The architectural resource team from the Central Arizona Chapter/AIA included:

- | | |
|---------------------------------|--|
| Larry Enyart, AIA | Recipient of over 24 local, regional and national design awards for small municipal and commercial work. |
| Douglas Whitneybell, AIA | Award-winning designer of residential projects of all types and sizes. |
| Gordon Rogers, AIA | Specialist in design of large commercial and private projects in Michigan and Arizona. |
| Patrick Rehse, AIA | Specialist in educational architecture and municipal projects. |

The jury elected to evaluate each project on its own merit, without comparing one design to another. The award-winning projects presented on the following pages are:

- | | |
|----------------------------|--|
| Honor Awards: | United States Port of Entry, Columbus, New Mexico
Holmes Sabatini Associates, Architects |
| | Kistler Collister's Fashion Square, Albuquerque, New Mexico
Patrick McClernon Architects/Planners, P.A. |
| Merit Awards: | Barelas Coffee House, Albuquerque, New Mexico
Berry Langford, Architect |
| | Private Residence Addition, Albuquerque, New Mexico
Siegel Design, Architects |
| | UNM Health Sciences and Service Building, Albuquerque, New Mexico
Holmes Sabatini Associates, Architects |
| | Restaurant André, Albuquerque, New Mexico
Patrick McClernon, Architects/Planners, P.A. |
| Honorable Mentions: | St. Joseph Rehabilitation Center, Albuquerque, New Mexico
FMBSM Architects, Inc. |
| | Residence Exterior Addition, Albuquerque, New Mexico
Berry Langford, Architect |
| | Remodel, Automotive Body Shop to Office and Retail Space, Santa Fe, New Mexico
Richard Yates, Architects, Inc. |

Honor Award:

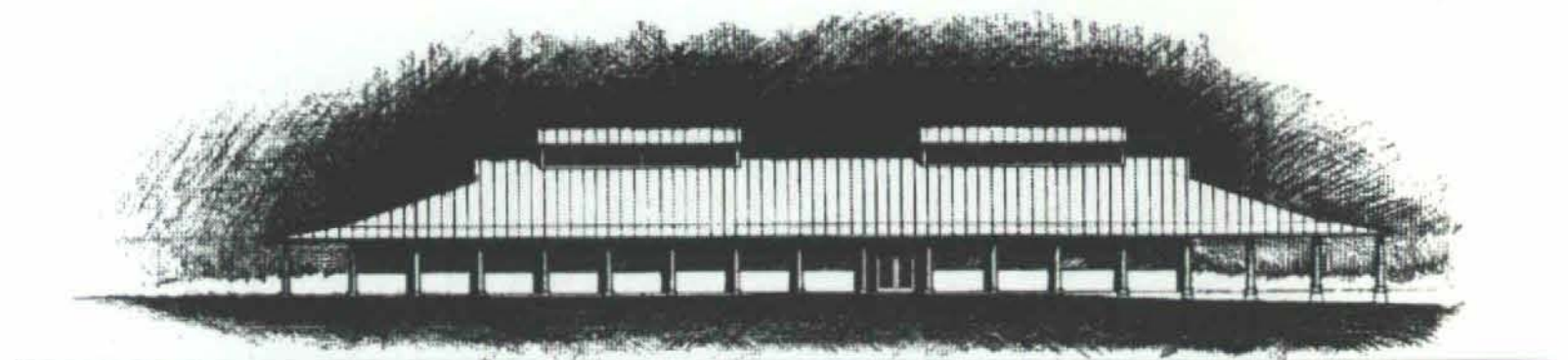
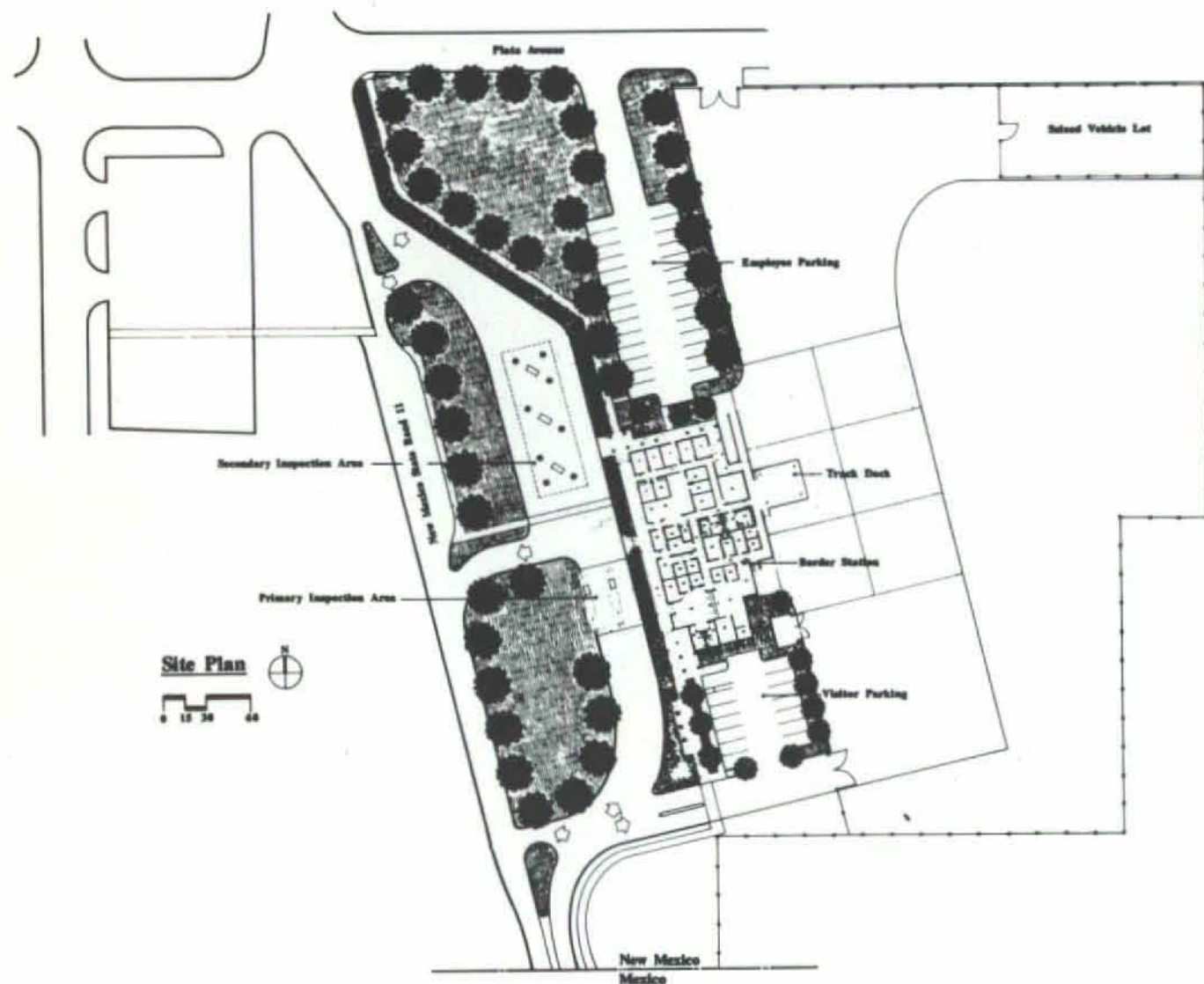
Holmes Sabatini Associates,
Architects

United States Port of Entry Columbus, New Mexico

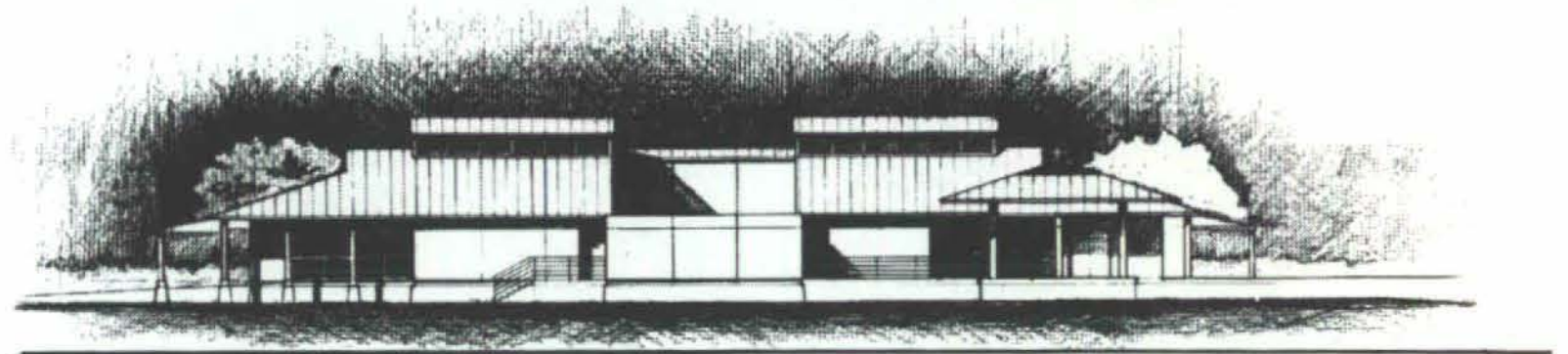
This facility, located on the U.S./Mexico border, replaced a small, outdated facility which was built over 50 years ago and was in need of expansion and major repairs.

The new Port of Entry provides for all administrative functions of the General Services Administration, the U.S. Customs Service, the U.S. Border Patrol, the U.S. Immigration and Naturalization Service, and the U.S. Department of Agriculture. Specifically included in the building are administrative offices, a conference/training room and a lunch room for POE personnel, public waiting and interview areas, violator holding areas for male and female violators as well as a secure seizure room and security vault, and ancillary facility support spaces. Other facilities include two vehicle inspection lanes, six secondary inspection spaces, and a truck dock capable of parking four trucks for cargo examination and processing. These exterior inspection areas are covered by canopies for protection against the natural elements.

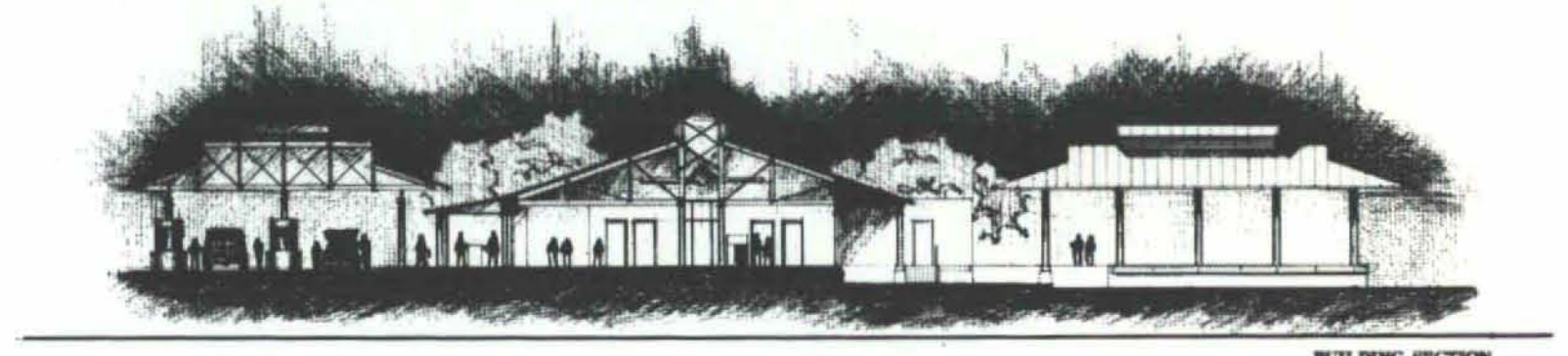
A primary concern was to provide a facility that not only spoke to the great and positive image of our country, but to signify friendliness to those crossing the border and sensitivity to its environmental and historic surroundings. The design, therefore, appears to take its image from the historic and traditional form of the turn-of-the-century railroad iconography. It was, after all, only when the railroad was introduced to southwest New Mexico, that "modern" materials such as tin, iron and steel became available. These materials, in turn, provided for the ability to slope roofs and to rapidly shed water from the occasional but hard-driving thunderstorms that occur during the hot summer months. Today, one finds mostly slightly sloped, corrugated metal roofs on barns, houses, corrals and other buildings in this area, all of which seem perfectly natural now to the environment. Thus, the design of this facility is shaped by the low slung, broad overhanging metal roofs, each of which are ventilated to the exterior at the eaves. In addition, raised roof areas function as ventilators for hot air and gases over the vehicle canopies and function as daylight inducing clerestories for the interior of the occupied building.



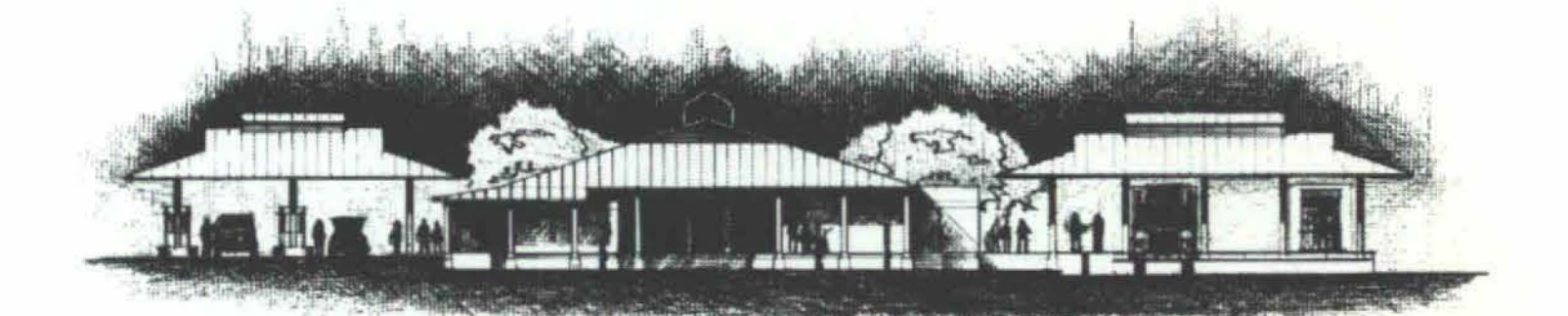
WEST ELEVATION



EAST ELEVATION



BUILDING SECTION



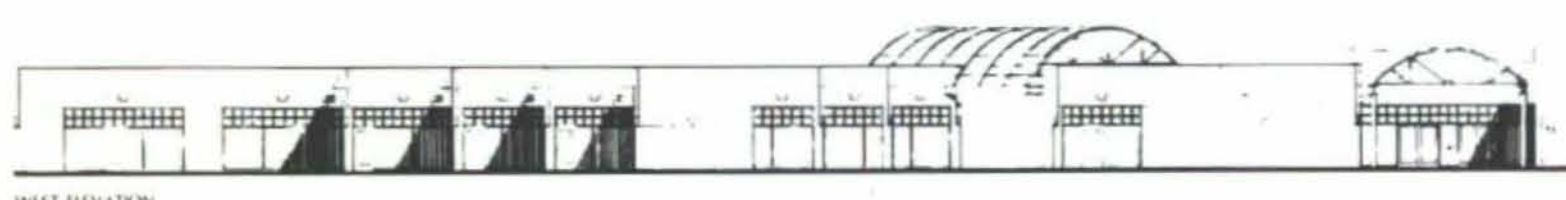
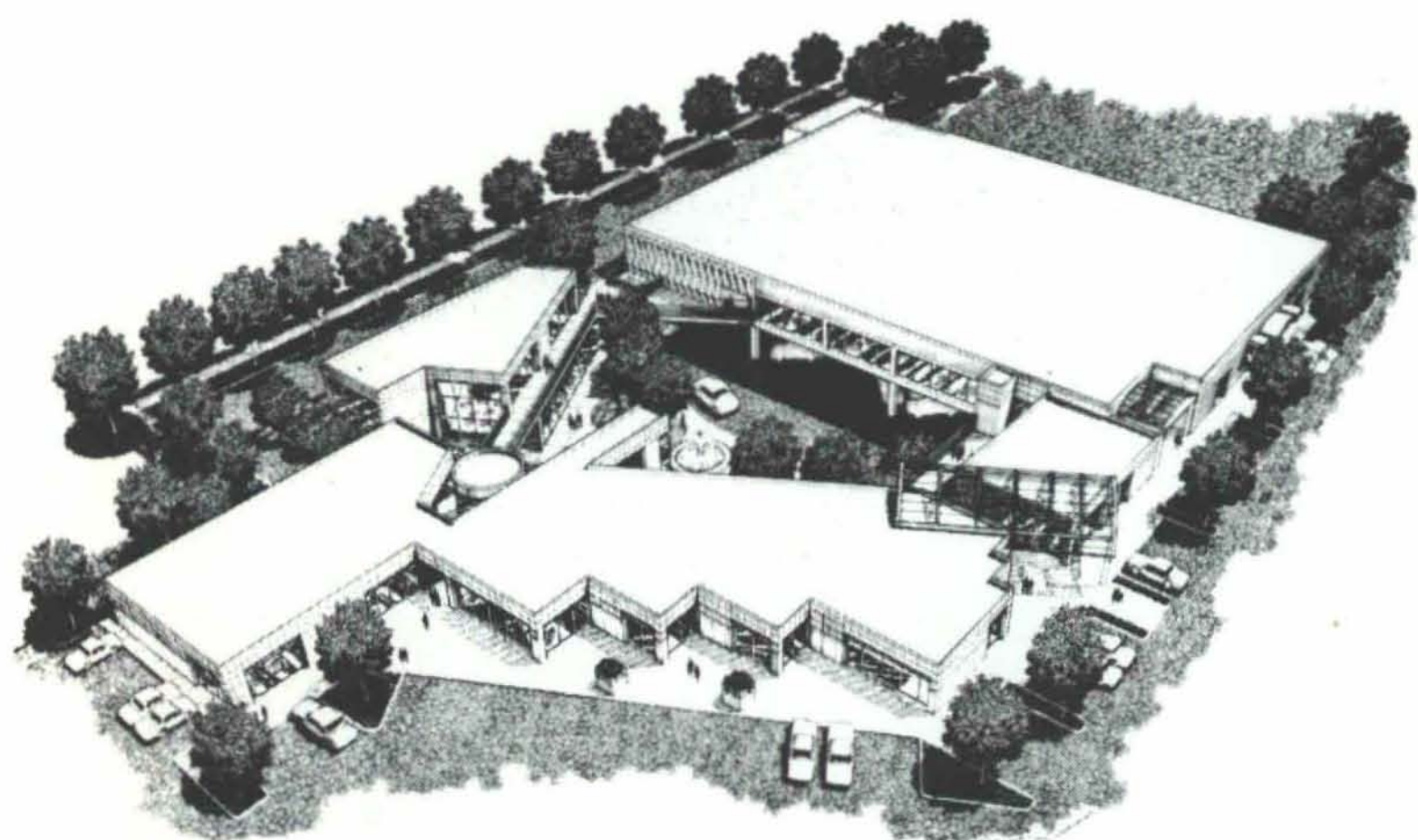
SOUTH ELEVATION



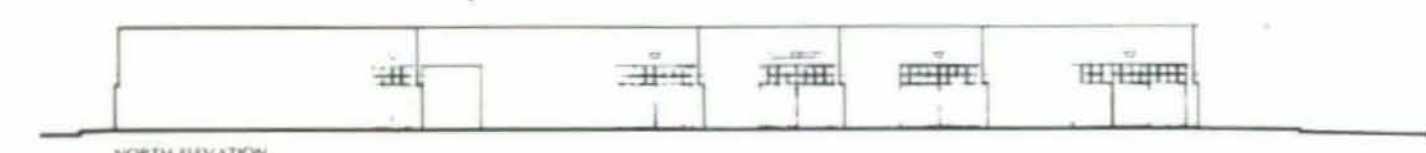
Completion Date:	December 1988
Client:	U.S. General Services Administration Fort Worth, Texas
General Contractor:	Tatsch Construction, Inc. Silver City, New Mexico
Structural Engineer:	Krause Engineering, Inc.
Mechanical/Electrical Engineers:	Coupland/Moran Engineers, Inc.
Landscape Architect:	Campbell/Okuma/Perkins, Associates, Inc.
Photography:	Syntax Photography/Kirk Gittings

Kistler Collister's Fashion Square Albuquerque, New Mexico

Honor Award: Patrick McClernon Architects/Planners, P.A.



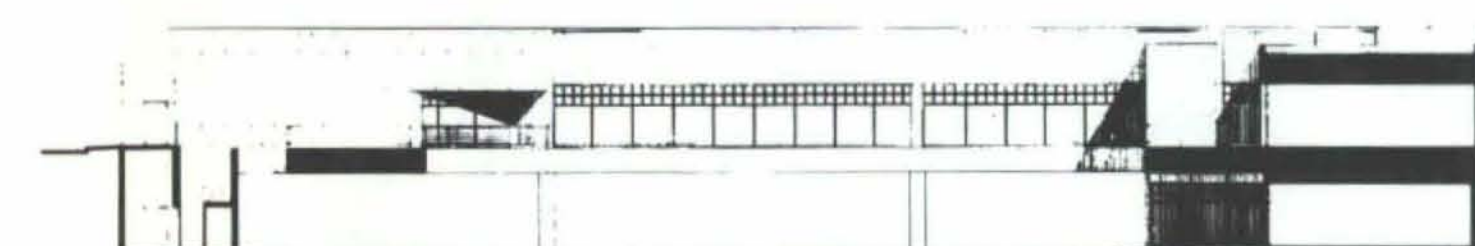
WEST ELEVATION



NORTH ELEVATION



SOUTH ELEVATION - COURTYARD



NORTH ELEVATION - KISTLER COLLISTER



Founded in 1909, when New Mexico was a territory, Kistler-Collister is among the state's largest and oldest locally owned retail business.

As the integrity of the 1960s facade has remained a classic statement of this time, efforts were made to reinforce rather than change this image. Acid washed precast concrete panels relate to the diamond faceted panels utilized in the initial phase. The respect for the original fabric that allows the sense of the original building to come through with dignity was carefully considered.

The glazed canopies on the major street facade echo the original double-curved concrete canopy. The angle of the major canopy draws attention to the angle of the plan inside the courtyard and to a glimpse of the interior open space visible beyond the shop facade. These materials all reflect the up-scale nature of the specialty shops.

The expansion added 37,000 square feet of additional space. Enlarging the anchor tenants space by 6,000 square feet gave the opportunity to open this store to a series of additional specialty shops and a restaurant on two levels creating an inward focused courtyard open to the sky yet sheltered from the extreme elements much as the traditional southwest plaza has developed through history. The two level scheme, while separating pedestrian activity, allows views from each shop unifying the collective effort of retailing. The upper street level tenants have store fronts on two sides allowing both maximum store front visibility and a connection to the internal access of both levels. The strong urban feeling which results is unlike anything offered in this community of 500,000 people which traditionally has small strip centers with no anchors or large regional malls with no definable personality.

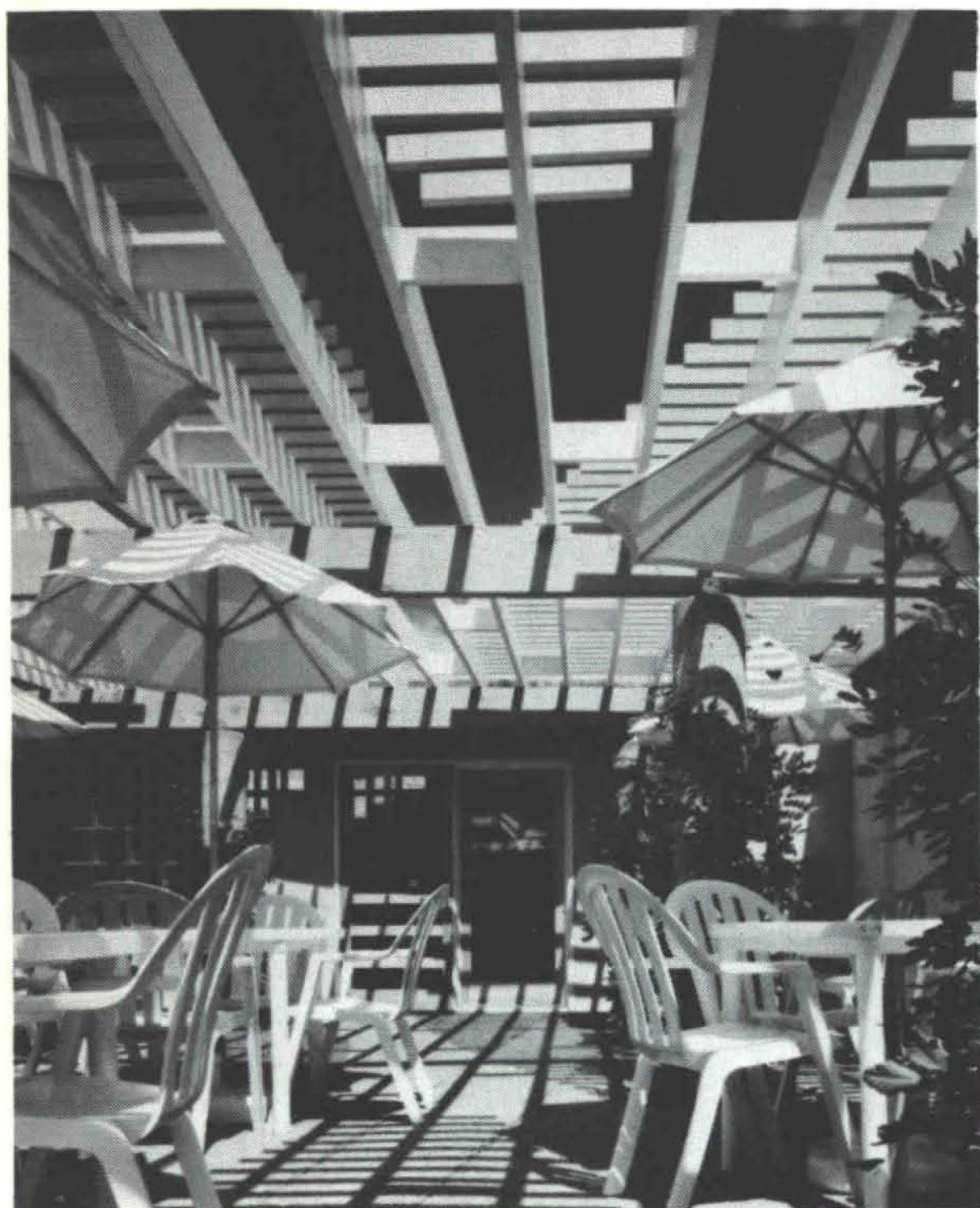
The stepped facades, aligned on an angle but maintaining a rectangular grid in plan, create sparkling facets of light in the display windows. Facing the boulevard, each shop front is marked by a band of yellow tiles matching the original glazed brick. The strength of the color creates a ribbon-like band which ties the yellow and neutral elements together in the general harmony of color.

Within the courtyard, the two levels of promenades, ramps and stairways add to the life of the center by allowing visibility of all the shops simultaneously and concentrating pedestrian activity. The restaurant space, placed at the focal point, within the court, opens to a view of the central fountain, glass elevator and its own terraced landscaped outdoor dining area.

Completion Date:	June 1988
Client:	Kistler Collister and Company, Inc. Albuquerque, New Mexico
General Contractor:	Bradbury & Stamm Construction Co., Inc. Albuquerque, New Mexico
Structural Engineer:	Bacchus Consulting Engineering
Mechanical/Electrical Engineers:	Coupland/Moran Associates, Inc.
Civil Engineers:	Easterling & Associates, Inc.
Landscape Architect:	Heads Up
Photography:	Robert A. Brazell, Crested Butte, Co. Douglas H. Collister Patrick McClernon

Merit Award:

Berry Langford,
Architect



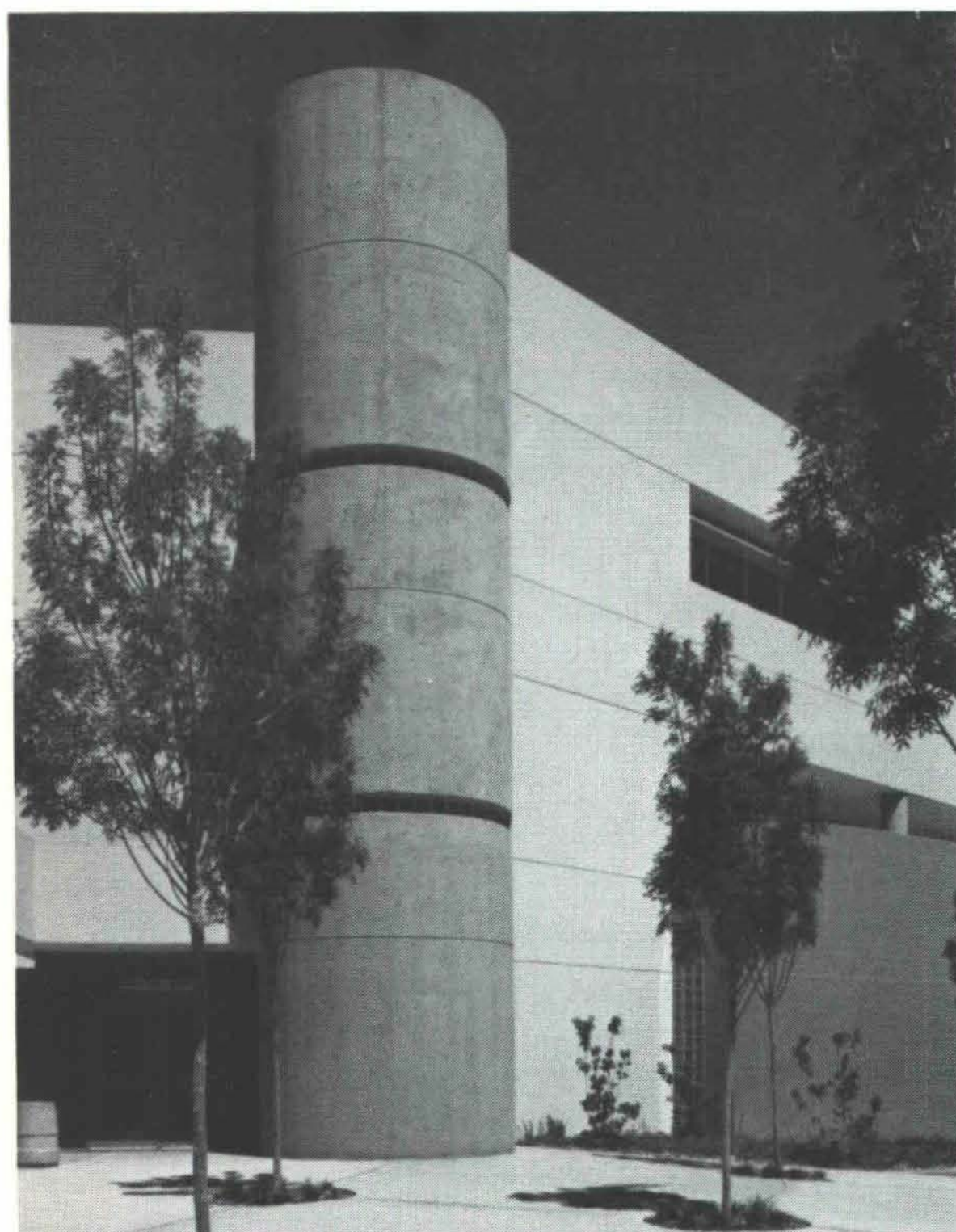
Barelas Coffee House Albuquerque, New Mexico



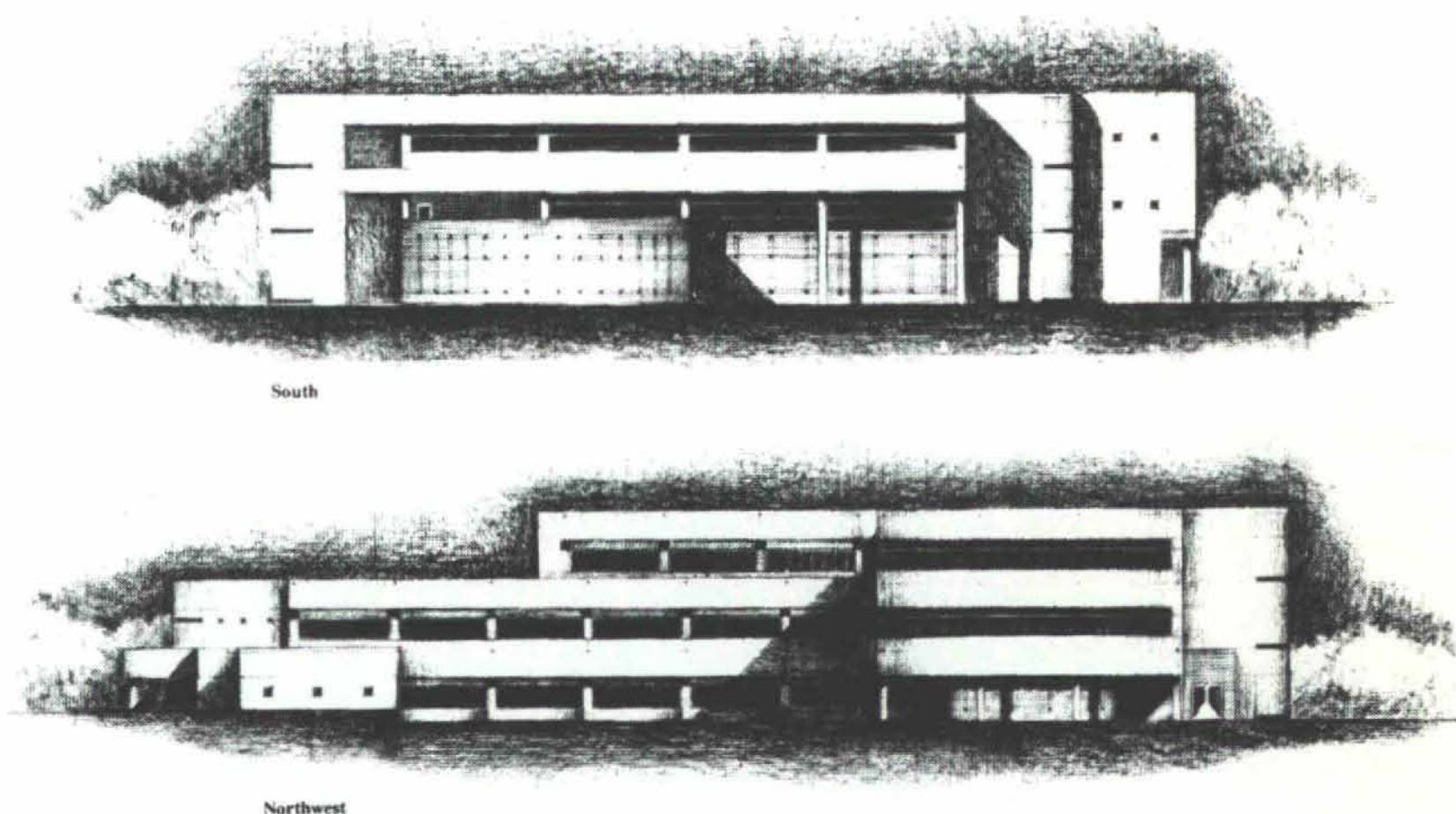
Client: Barelas Coffee House
Albuquerque, New Mexico
General Contractor: Ken Stout Construction
Albuquerque, New Mexico
Structural Engineer: Randy Holt
Drawings: Sam Sterling
Photography: Syntax Photography/Kirk Gittings
Anthony Richardson

Merit Award

Holmes Sabatini Associates,
Architects



UNM Health Sciences and Service Building Albuquerque, New Mexico



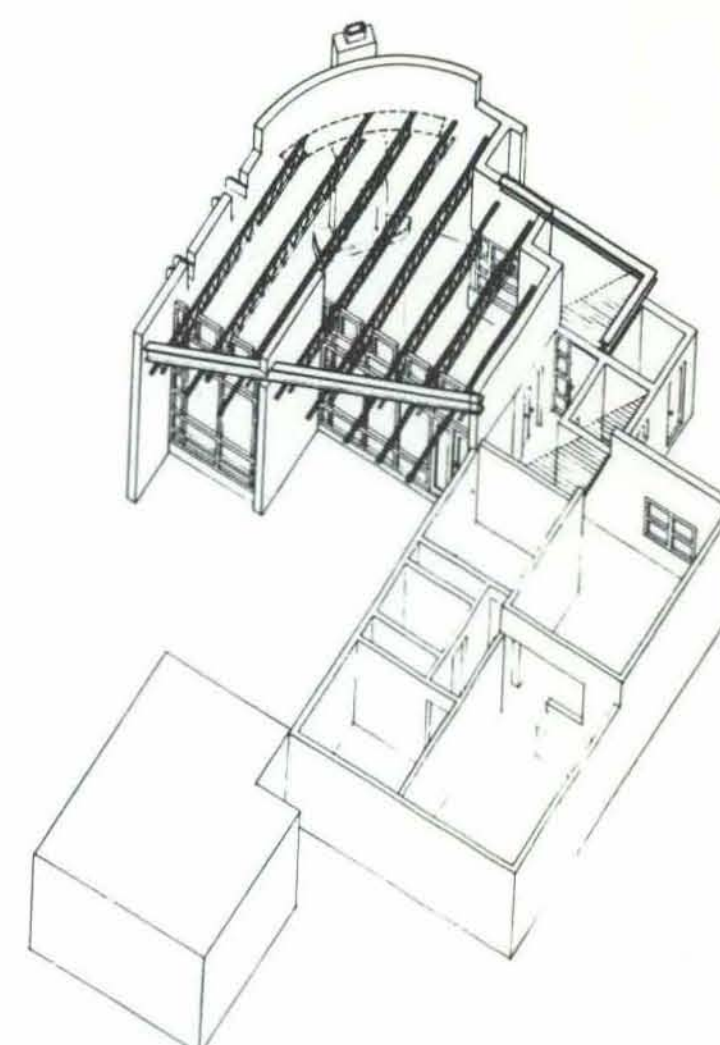
Completion Date: December 1988
Client: University of New Mexico
Albuquerque, New Mexico
General Contractor: Davis and Associates, Inc.
Santa Fe, New Mexico
Krause Engineering, Inc.
Structural Engineer: Coupland/Moran Associates, Inc.
Mechanical/Electrical Engineers: Robert Johns, ASLA
Landscape Architect: Syntax Photography/Kirk Gittings
Photography:

Private Residence Addition
Albuquerque, New Mexico



Merit Award:

Siegel Design,
Architects



Completion Date: November 1989
Client: Owner/ Architect
Albuquerque, New Mexico
General Contractor: Stoddard Construction
Albuquerque, New Mexico
Structural Engineer: Robert Hawthorne
Photography: Robert Reck

Restaurant André
Albuquerque, New Mexico



Merit Award:

Patrick McClernon
Architects/Planners, P.A.

Completion Date: June 1988
Client: Chef André Diddy, Douglas H. Collister, Kenneth O'Dell
The Courtyard Restaurant Association,
Albuquerque, New Mexico
General Contractor: Bradbury & Stamm
Construction Co., Inc.
Albuquerque, New Mexico
Structural Engineer: Bacchus Consulting
Engineering
Mechanical/Electrical Engineers: Coupland/Moran
Associates, Inc.
Civil Engineers: Easterling & Associates, Inc.
Interior Architecture: Patrick McClernon, AIA &
William Osofsky, AIA
Landscape Architects: Heads Up
Photography: Robert A. Brazell,
Crested Butte, Co.
Original Art: Frank M'culloch

Honorable Mention:
FMBSM Architects, Inc.



St. Joseph Rehabilitation Center
Albuquerque, New Mexico

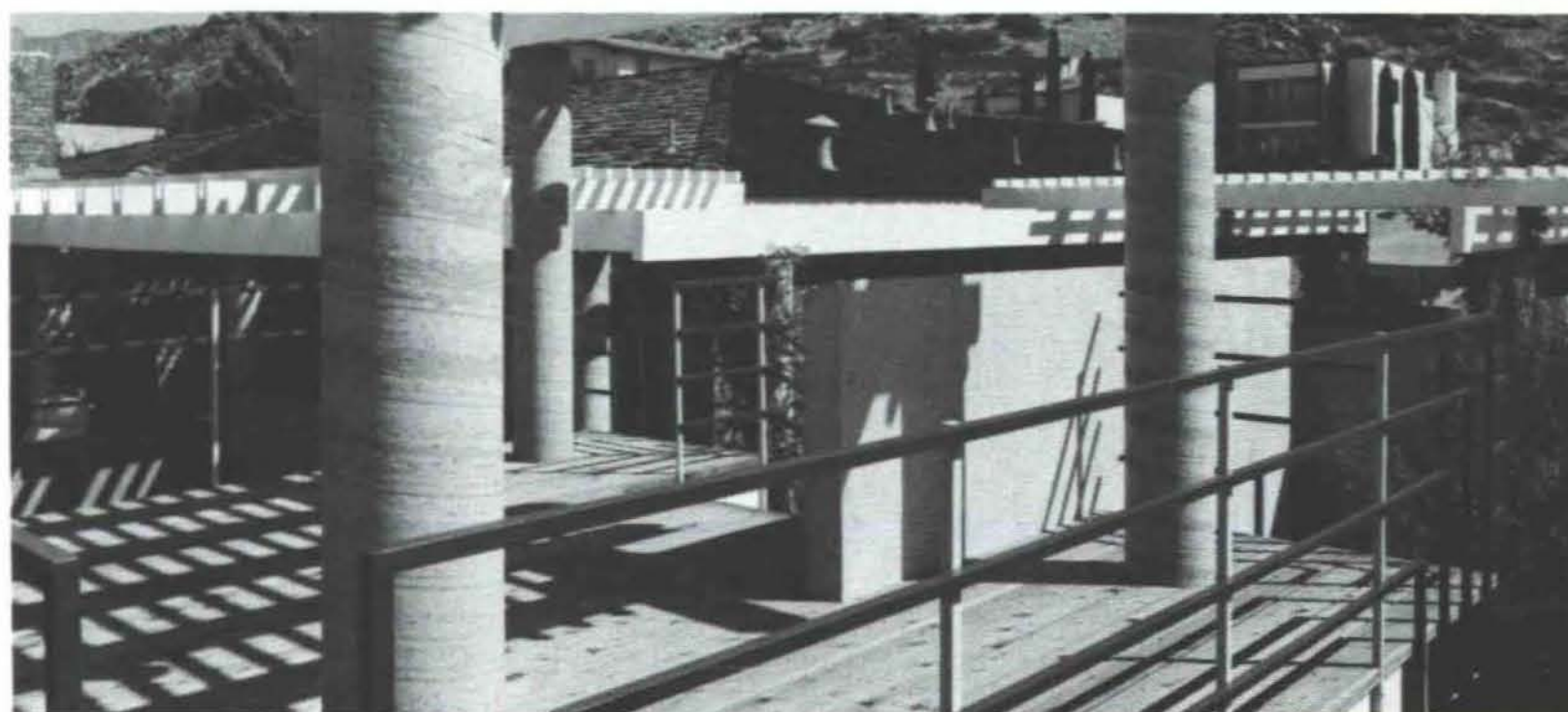


Completion Date: November 1989
Client: St. Joseph Healthcare Corporation
 Albuquerque, New Mexico
Project Team: Robert McCabe, AIA, Principal Architect
 Mark Eshelman, AIA, Director of Design
 Michael Norton, Project Manager
General Contractor: Jaynes Corporation
 Albuquerque, New Mexico
Photography: Dick Ruddy Photography

Honorable Mention:
Berry Langford, Architect



Residence Exterior Addition
Albuquerque, New Mexico



Client: Bob and Martha Francis
 Albuquerque, New Mexico
Structural Engineer: Engineering Associates
Photography: Syntax Photography / Kirk Gittings

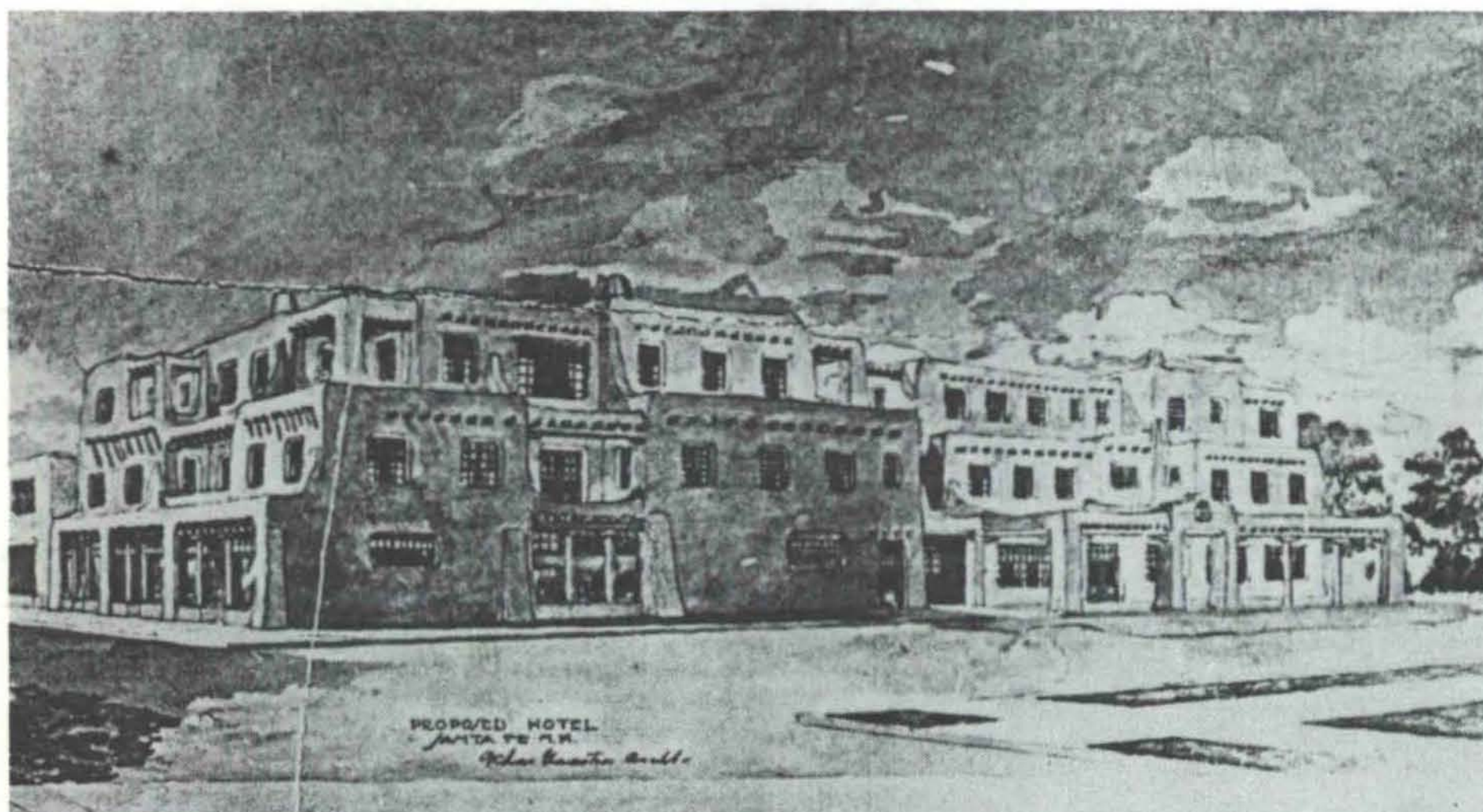
Honorable Mention:
Richard Yates Architects, Inc.



Remodel, Automotive Body Shop
Santa Fe, New Mexico



Completion Date: June 1988
Client: Richard Yates Architects, Inc.
 Santa Fe, New Mexico
General Contractor: Prado Verde Construction
Photography: Stephen Piersol



Architect T. Charles Gastra Designed Hotel for Santa Fe Plaza

In 1919 Santa Fe architect T. Charles Gastra designed a hotel for the northwest corner of Santa Fe Plaza. The drawing shows us a large hotel, rendered in the Spanish Pueblo Revival style that was just beginning its strong and vibrant life—a life that has extended into Santa Fe's preferred architectural style in 1991. The hotel was not built, rather T. Charles Gastra designed another building for the site—the Cassel Building of 1921, which was a movie theater flanked at the street front by two retail stores. As the years unfolded the Cassel Building/Theater underwent remodeling until it evolved into the present dress as The First National Bank of Santa Fe.

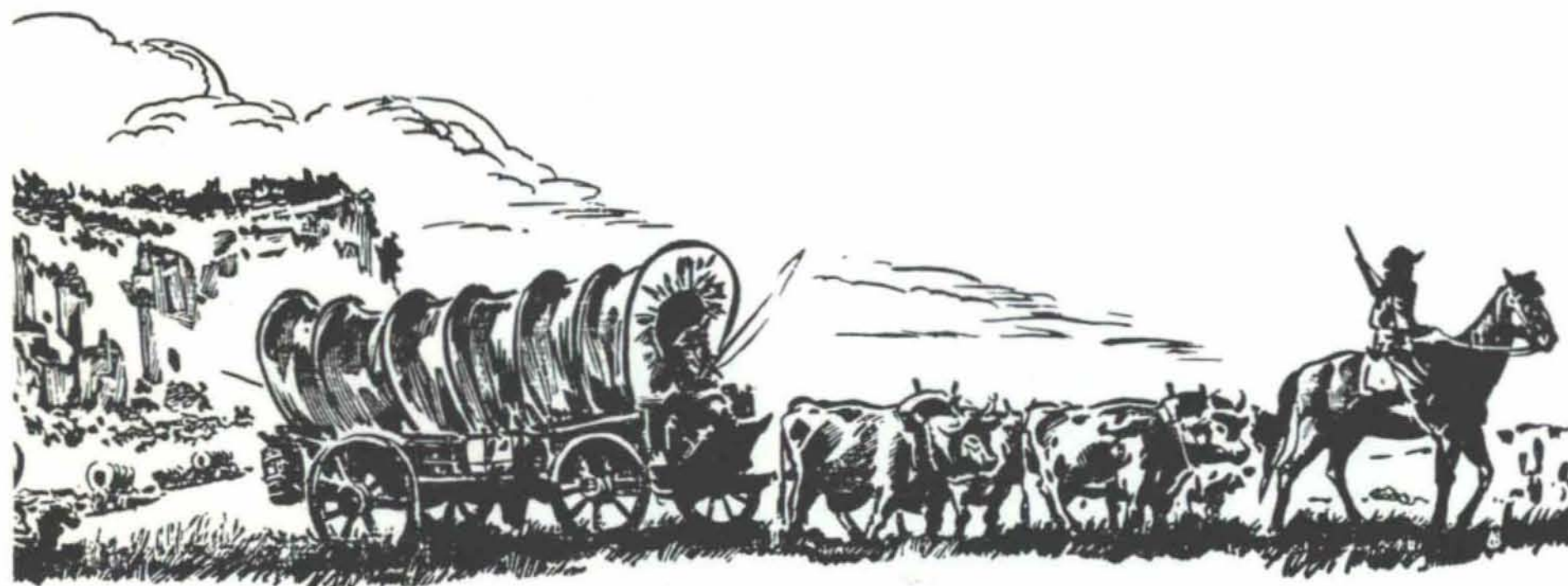
Historical Society of New Mexico has Important Santa Fe Trail Book Available

The Historical Society of New Mexico has just received a *bonanza*. *John Riddle and Nancy Riddle Madden have donated their remaining volumes of Records and Maps of the Old Santa Fe Trail* which was originally researched and authored by their father, Kenyon Riddle.

Following Kenyon Riddle's death in 1957, additional information was found in his notes. Accordingly this new information, along with three additional map sheets, was included in a second edition of the book and released in 1963.

All unsold copies of the 1963 edition are now in the hands of the Society and copies are available from the Society's office in Santa Fe. The price per copy, along with the packet of eight maps, is \$20.00 plus \$2.50 postage and handling. This truly is a bargain. Please order directly from:

Historical Society of New Mexico
P.O. Box 5819
Santa Fe, New Mexico 87502
or call John P. Conron at (505) 983-6948 to pick up copies at his office.



SPACEWEEK: A Week of Fun in Alamogordo

ALAMOGORDO, NM — SPACEWEEK at the Space Center was a week-long extravaganza celebrating space exploration, the most extensive Spaceweek to date at the International Space Museum and OM-NIMAX®/Planetarium complex.

For the twelfth consecutive year, volunteers in cities throughout the United States organized Spaceweek events for the week of July 16 through the 24th. The Spaceweek '91 theme was "Look to the Heavens and Learn" and nationwide attendance was expected to top 850,000.

The schedule of events included special stargazing sessions at nearby White Sands National Monument, co-sponsored by the Space Center and the Alamogordo Amateur Astronomers. Dr. John P. Stapp was present to autograph his collection of humorous insights and sidelights called "Dr. Stapp's Almanac and Rational Calendar."

Other highlights included a Youth Day at the Space Center when adults were encouraged to explore the facility with the enthusiasm of youth. On Space Food Day, space foods were on display and available for tasting. On the evening of July 19 a dinner took place at the Holiday Inn with astronaut Mike Mullane as honored guest and speaker.

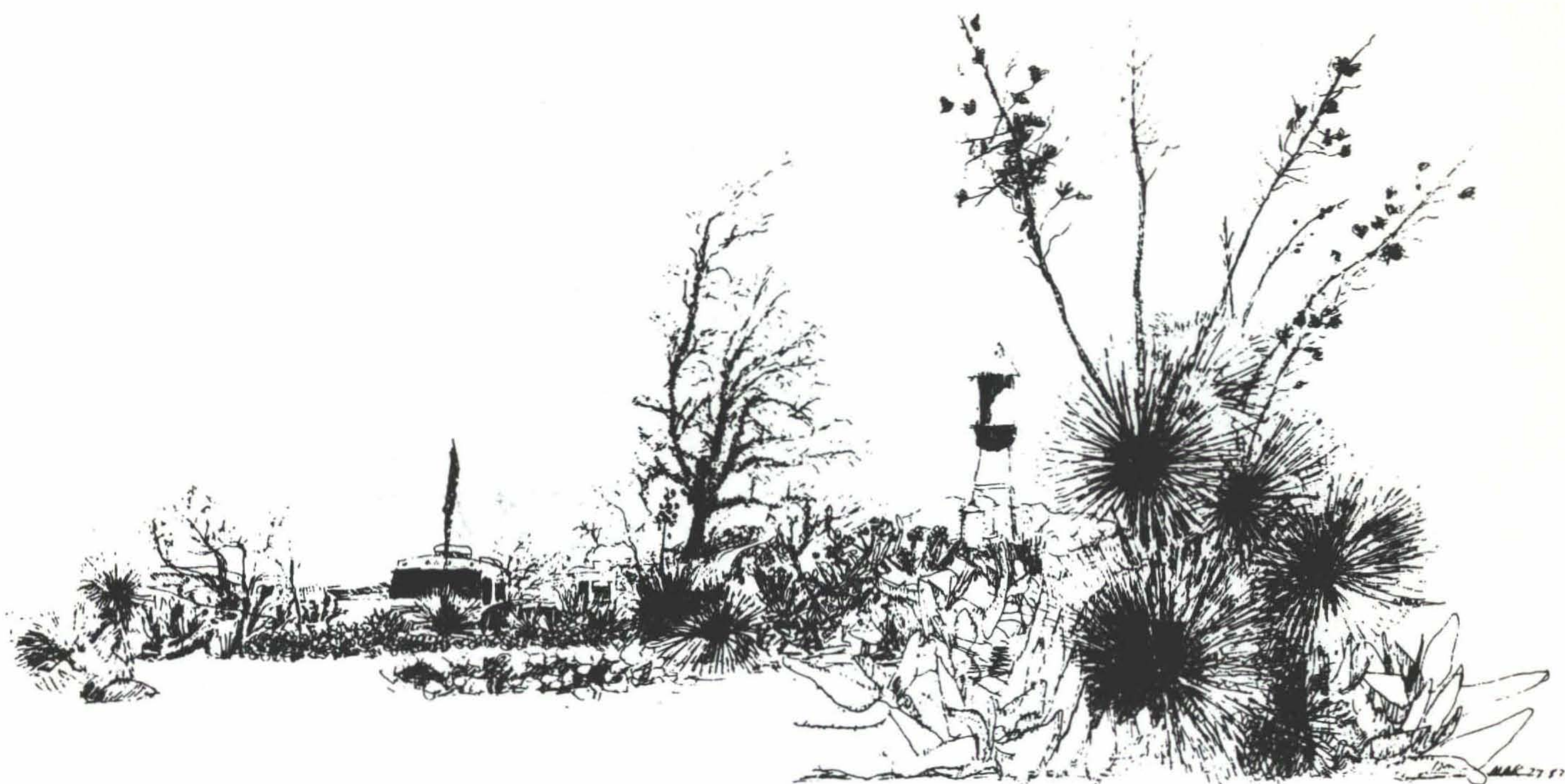


Chaves County Historical Society Announces a New Book:

Treasures of History II - Chaves County Vignettes has been published by the Chaves County Historical Society. The book includes 55 vignettes about people and events of Roswell and Chaves County. Further the book contains many previously unpublished photographs and over 60 "Treasures of History" features from the *Roswell Daily Record*. The book was authored by historians Elvis Fleming and Ernestine Chesser Williams, with additional articles contributed by Lynn Perrigo and Peggy Stokes.

The book is available from the Chaves County Historical Society, 200 North Lea, Roswell, New Mexico 88201. The price is \$9.95 paperback and \$13.95 hardback.

The Albuquerque Chapter/AIA has moved from the Sunshine Building to new officers in Nob Hill. The new address is: 111 Carlisle Boulevard, SE, #5, Albuquerque, NM 87106. Phone (505) 255-2170; FAX (505) 255-2157.



Now, after years of decay, Columbus is perking up. A sure sign is a \$180,000 building going up in the center of town, the largest built since the 1916 Villa raid. The new two-story building will house a bed and breakfast inn. Columbus also has a bank, a grocery store, beauty shop, art gallery, tea room, post office, filling station, clothing store, library, village hall and police and fire departments—and the Columbus Museum which is housed in the old railroad depot.

(Ralph Looney, "Surprise, Panchol! Columbus, N.M. is Alive and Well," *The Albuquerque Tribune*, June 19, 1991. Drawings by John McClure III, Country Western musician and songwriter, who divides his time between Columbus and Mesilla.)

W H H

W.H. HARLAN & ASSOCIATES, INC.
Noise Control Systems

"When Quiet Is Important"

Music Practice Rooms
High Pressure Pipe Insulation
Broadcast
Welding Screens
Video Productions
Panel Absorbers
Personnel Enclosures
Baffles
Noise Barriers
Quilted Faced Fiberglass Absorbers
Noise Control Curtains
Damping Compounds

Post Office Box 37260
Albuquerque, New Mexico 87176
(505) 275-1415

 **SCHLAGE**

LOCKSMITH SUPPLIES — DOOR HARDWARE



Congratulations to

**Kistler Collister
Fashion Square**

Restaurant André

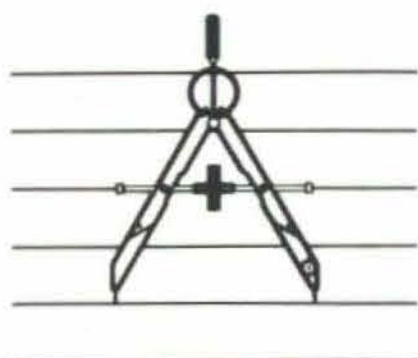
**UNM Ambulatory
Care Unit**

243-5541

COOK'S BUILDING SPECIALTIES
P.O. BOX 834, ALBUQUERQUE, NEW MEXICO •
87103

Professional Directory

ARCHITECTURE+PLUS



P.O. Box 2106 Roswell, NM 88201 (505) 623-5700

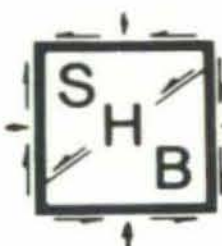


Cost Consultant
and Estimator

RICARDO A. BACA, P.E., C.P.E.

1116 Wyoming Ave.
El Paso, Texas 79902
915/533-1176

In New Mexico
Call
505/883-9686



Sergent, Hauskins & Beckwith
CONSULTING GEOTECHNICAL ENGINEERS

(505) 884-0950

4700 Lincoln Road, NE • Albuquerque, New Mexico 87109

ALBUQUERQUE • EL PASO • PHOENIX • RENO
SALT LAKE CITY • SANTA FE • TUCSON

RICHARD VAUGHAN
CONSULTING ENGINEER
3700 COORS ROAD N.W.
ALBUQ., N.M. 87120

(505) 831-4511



**PROFESSIONAL
ENGINEERS
GROUP** A JOINT
VENTURE

4600 C MONTGOMERY BLVD NE
ALBUQUERQUE, NM 87109
505/883-8682

BRIDGERS & PAXTON CONSULTING ENGINEERS, INC.
MECHANICAL ENGINEERING
CHAVEZ-GRIEVES CONSULTING ENGINEERS, INC.
CIVIL/STRUCTURAL ENGINEERING
TIERRA DEL SOL ENGINEERING, INC.
ELECTRICAL ENGINEERING

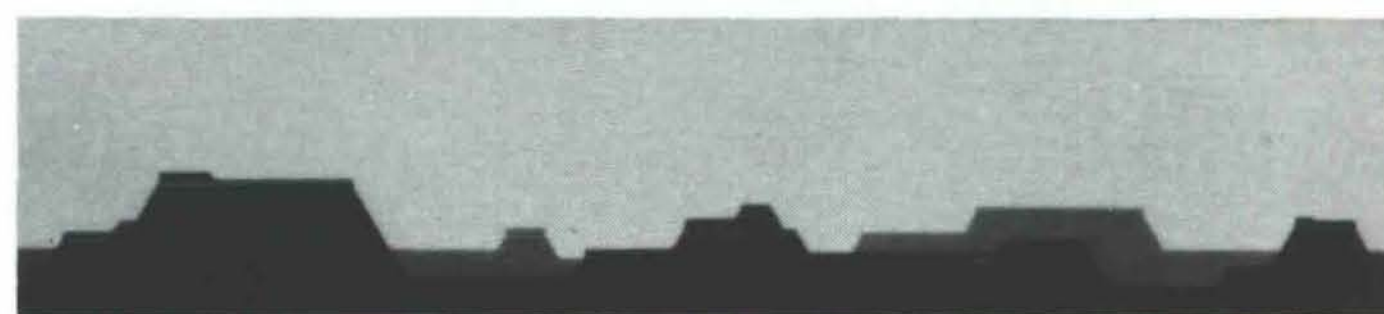


ARCHITECTS-ENGINEERS-CONSTRUCTORS

COMMERCIAL • INDUSTRIAL
INSTITUTIONAL • GOVERNMENTAL

6501 AMERICAS PARKWAY NE Suite 700 ALBUQUERQUE, NM 87110 • (505)889-4100

Holmes & Narver



STEVENS, MALLORY, PEARL & CAMPBELL, P.A.

ARCHITECTS
115 AMHERST DRIVE, S.E.
ALBUQUERQUE, NEW MEXICO

505 255-8668
87106



Richard Yates, A.I.A.

Richard Yates
Architects, Inc.

428 Sandoval
Santa Fe
New Mexico 87501
505/988-1913

*Listing space in this Professional Directory
available through*



Carleen Lazzell,
Associate Editor/Advertising Director

NEW MEXICO ARCHITECTURE
8515 Rio Grande Boulevard NW
Albuquerque, NM 87114
505-898-1391

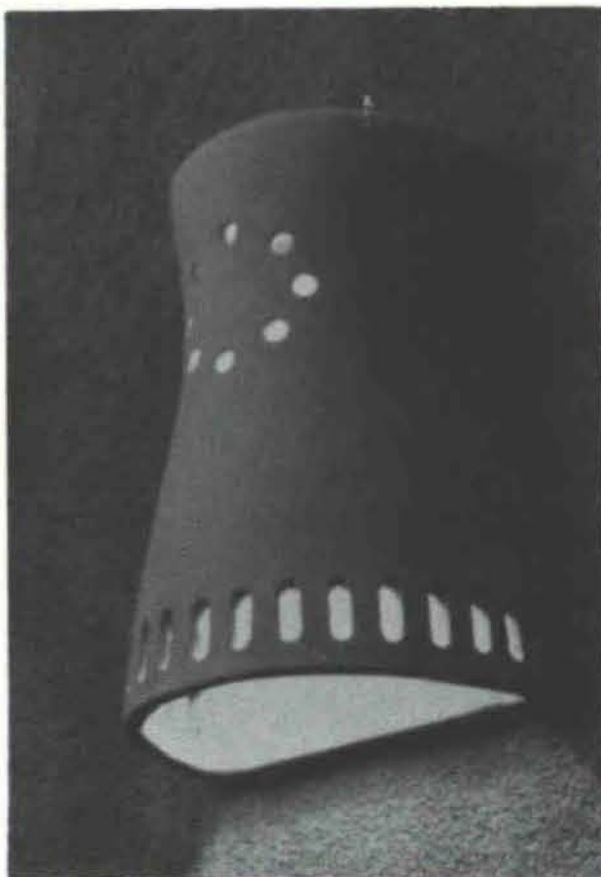


Boyle Engineering Corporation

consulting engineers

Suite 600-E
6400 Uptown Boulevard, N.E.
Albuquerque, New Mexico 87110

505 / 883-7700



SANTA FE LIGHTS

Southwestern Style
Handcrafted Stoneware
Architectural Lighting Fixtures
INDOOR & OUTDOOR
WALL, CEILING, AND
HANGING LIGHTS.
CHANDELIERS &
GARDEN LIGHTS

Studio: Rt. 10 Box 88-Y
Dept. B Showroom: The Santa Fe Pottery
323 Guadalupe St.

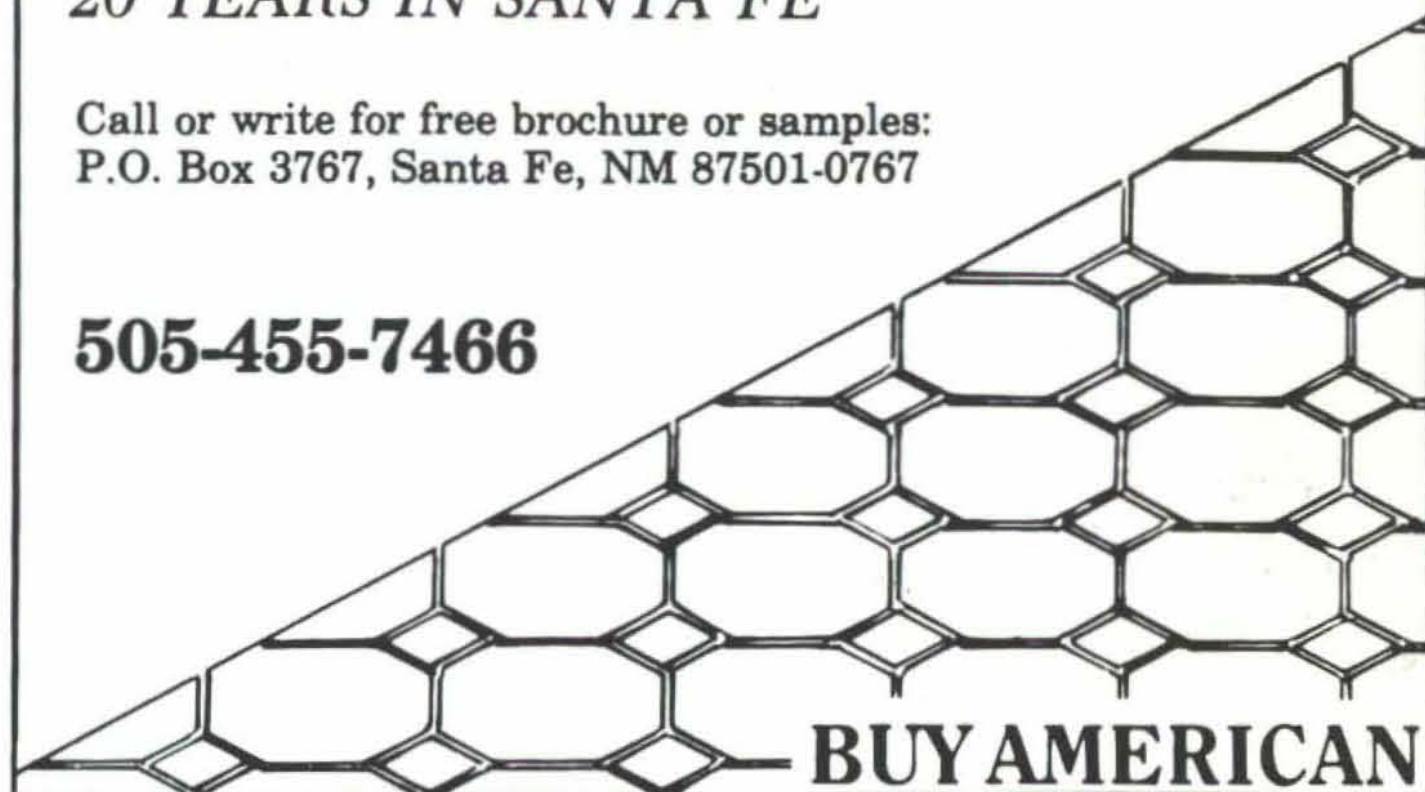
Santa Fe, New Mexico 87501
505-471-0076

Watson's TILES DE SANTA FE HANDMADE FLOOR TILE

20 YEARS IN SANTA FE

Call or write for free brochure or samples:
P.O. Box 3767, Santa Fe, NM 87501-0767

505-455-7466



**don
page**
& ASSOCIATES, INC.

(505) 883-0028

Don Page
President

3405 Stanford N.E. zip 87107
P.O. Box 35806
Albuquerque, N M 87176
Fax (505) 888-7007

SUPPLIERS FOR THE GENERAL CONTRACTOR

Contract Finish Hardware • Architectural Wood Doors

Hollow Metal Frames & Doors • Misc. Specialties

new mexico architecture

nma

Published by New Mexico Society of Architects, American Institute of Architects, a non-profit organization. Editorial Correspondence should be addressed to John P. Conron, Box 935, Santa Fe, N.M. 87504. (505) 983-6948.

Editorial Policy: Opinions expressed in all signed articles are those of the author and do not necessarily represent the official position of the publishing organization. Additional copies of NMA available from John P. Conron, FAIA/FASID, P.O. Box 935, Santa Fe, N.M. 87504.

Change of address: Notifications should be sent to New Mexico Architecture, Box 935, Santa Fe, N.M. 87504 (505) 983-6948 at least 45 days prior to effective date. Please send both old and new addresses.

Subscriptions: Write Circulation, New Mexico Architecture, Box 935, Santa Fe, N.M. 87504. Single Copy \$3.00. Yearly subscription \$15.00.

Advertising: Send requests for rates and information to Carleen Lazzell, Associate Editor/Advertising Director, 8515 Rio Grande Boulevard, N.W., Albuquerque, N.M. 87114, (505) 898-1391.

INDEX OF FIRMS who make possible the publication of NMA and the page upon which their message can be found:

Alexander & Alexander	8
American Airlines	20
Bradley General Contractors	5
Brother Sun/US Sky	4
Cook's Building Specialties	16
Davis & Associates, Inc.	2
Don Page & Associates, Inc.	18
Ferreri Concrete Structures, Inc.	18
Goodrich Roofing	19
Gossett Bros., Inc.	19
Holman's	6
Kitts Enterprises, Inc.	6
Klein Enterprises, Inc.	19
National Trust for Historic Preservation	6
Pella Rio Grande, Inc.	4
Plant Designs	7
Rocky Mountain Stone Company, Inc.	5
Santa Fe Lights	18
Sherwin Williams	4
Tiles de Santa Fe	18
Tortuga, Inc.	8
Western Building Supply Co., Inc.	5
W. H. Harlan & Associates, Inc.	16

*With Your Imagination
We Can Create
Concrete Structures of
Distinction*

FCS

Ferreri Concrete Structures, INC.

3411 Candelaria, NE
Albuquerque, New Mexico 87107
(505) 884-1221 FAX (505) 884-1224

Printed by Hall-Poorbaugh Press, Inc., Roswell, New Mexico

Roofing Contractor
for UNM



Quality Since 1946

Recent projects for UNM -

Anderson Hall, Mattox Center, Continuing
Education, Medical Library, Kiva, College
of Education, Health Sciences Building

THROUGHOUT **NEW MEXICO**
 ARIZONA
 UTAH
 COLORADO
 TEXAS
 OKLAHOMA

Albuquerque, NM 87107 • 505-884-0662

5 years from now, who will be here
helping to support
the design requirements
of your projects?



We have been serving the Design and
Architectural communities since 1971.

TATE Access Flooring
LIEBERT Environmental Products
Power Systems
MODERNFOLD Access Control Systems
O'BRIEN Accordion/Operable Partitions
Demountable/Movable Walls

Architectural Specialties

6819 Academy Parkway West NE
Albuquerque, NM 87109
505-344-3960
N.M. License #14136

This Space
FOR
SALE
Call:
Carleen Lazzell
505/898-1391



CONGRATULATIONS
HOLMES SABATINI ARCHITECTS
HEALTH SCIENCES BUILDING - UNM

ANOTHER STO EXTERIOR FINISH SYSTEM
SUPPLIED BY ECS OF ALBUQUERQUE
(505) 344-2925

GOSSETT BROS., INC

PLASTERING CONTRACTOR
SERVING ALBUQUERQUE SINCE 1971

OTHER LOCAL GBI / STO PROJECTS

BLUE CROSS BLUE SHIELD BUILDING
UNM MITCHELL HALL
PYRAMID HOTEL
UNM PRESIDENT'S HOUSE

sto

New Mexico Architecture
8515 Rio Grande Blvd., N.W.
Albuquerque, NM 87114

ADDRESS CORRECTION REQUESTED

New Mexico architecture
FAL Per. ALAMOS
Received on: 09-11-91

LOS ALAMOS NM 87144

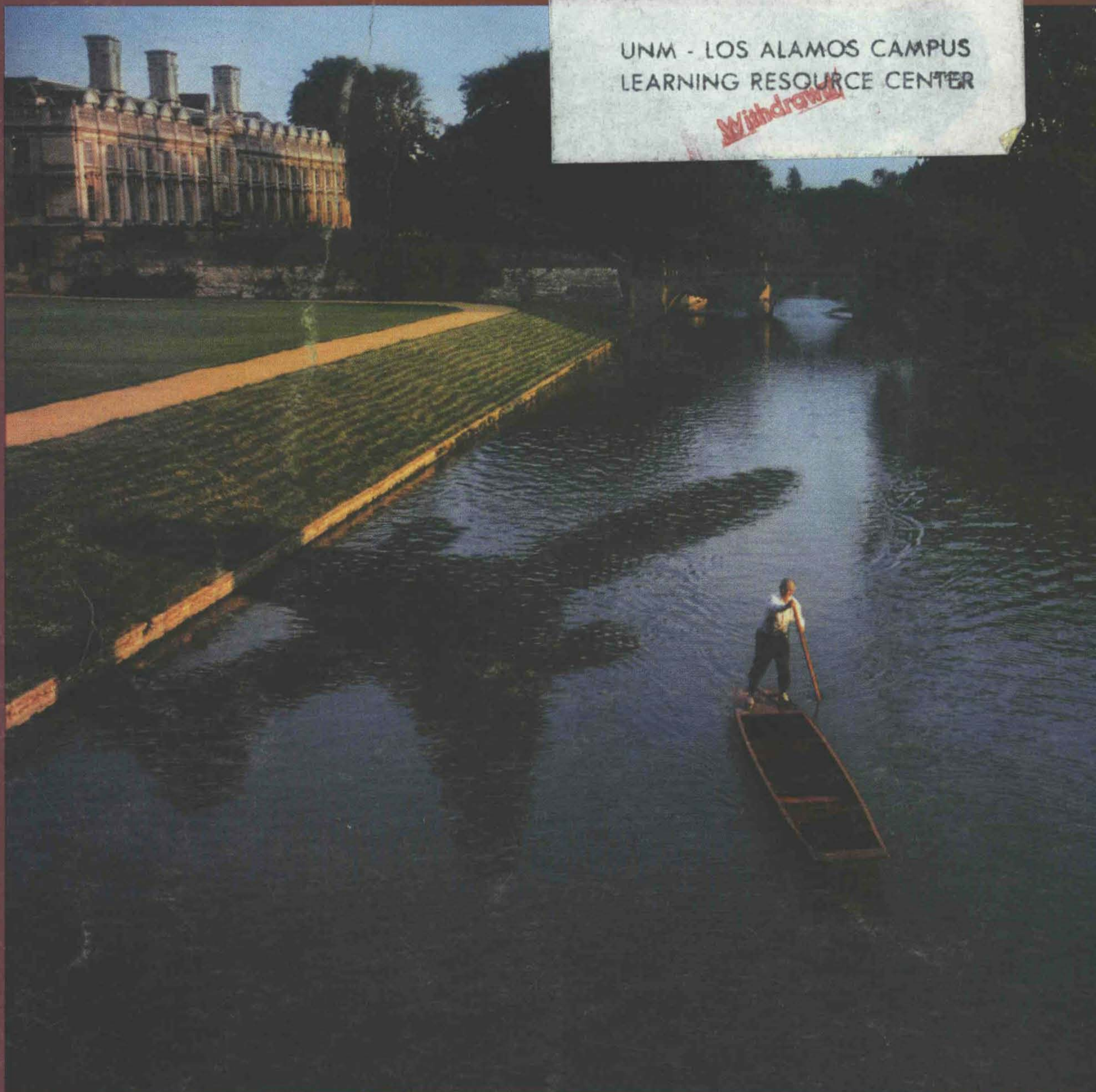
3

Bulk Rate
U.S. Postage
PAID
Roswell, N.M.
Permit No. 47

D ALL OVER EUROPE,
THERE'S SOMETHING SPECIAL IN THE AIR.

UNM - LOS ALAMOS CAMPUS
LEARNING RESOURCE CENTER

~~Withdrawn~~



The tranquil rivers of England. The golden palaces of France. The hidden castles of Germany. Europe is a truly magical place. And this year, American Airlines can take you to more of it than ever. With service to 11 wonderful European cities. And affordable FlyAway VacationsSM packages to all of them. So let us take you where there's something special in the air.

American Airlines[®]
Something special to Europe.

Glasgow • Paris • Frankfurt • Zurich • London • Manchester • Stockholm
Brussels • Madrid • Duesseldorf • Munich