

Fine
Arts
NA
1
N4
v. 31
no. 3-4

New Mexico

ARCHITECTURE

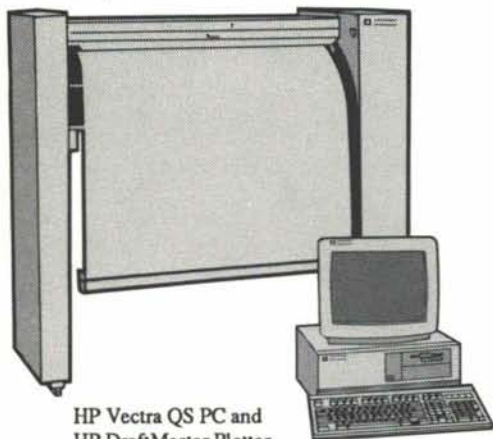
MAY/JUNE/JULY/AUGUST 1990 \$3.00

WESTERN MOUNTAIN REGION
1989 AWARDS FOR EXCELLENCE
IN ARCHITECTURE

HOLMAN'S

has it!

Create a PC-based CAD system as individual as your designs



HP Vectra QS PC and
HP DraftMaster Plotter

Whatever your design or drafting requirements, HP has a broad line of PC-based CAD hardware products to meet your individual needs.

From PCs, color displays and graphics cards to printers and plotters, HP provides a broad line of CAD products to help you work faster and smarter.

- Reliable, high-performance 80286- and 80386-based HP Vectra PCs
- Superior-quality plotters and printers
- High-resolution 16- and 20-inch displays
- A dependable, high-speed, high resolution graphics card

And because they're fully compatible with industry standards, you can customize your CAD system to meet your specific application.

Come in for a demonstration today.



**HEWLETT
PACKARD**



Quality products for the world of Science, Engineering & Business.

401 WYOMING NE • 265-7981

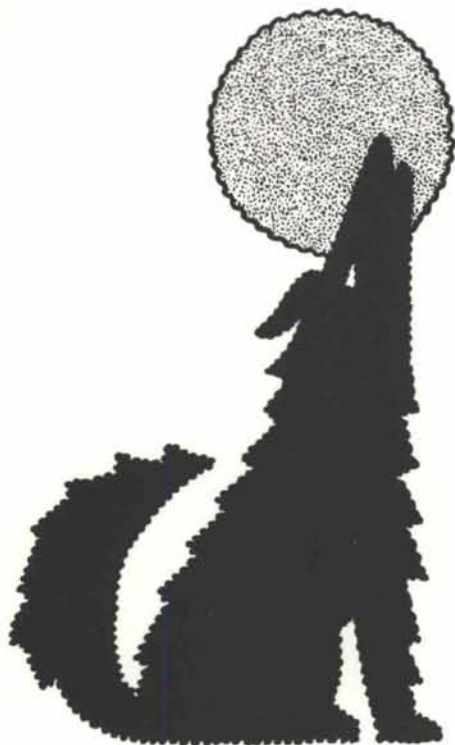
VISA • MASTER CARD • AMERICAN EXPRESS

Store Hours: Mon-Fri 8:00 - 5:30 Sat 10:00 - 3:00



AUTOCAD

PC-CAD/PMS 7/88 C. HICKS



Planning and zoning problems can make you howl.

Sometimes planning and zoning problems can bring a quality development project to a standstill. Often, they just slow it down and make it more costly.

That's where we come in.

We're specialists in guiding clients and their development projects through the regulations. Efficiently.

After all, if it were easy to get a development project approved, there wouldn't be a firm like Herb Denish & Associates.



**HERBERT M. DENISH
AND ASSOCIATES INC.
URBAN CONSULTANTS**

P.O. Box 2001 Albuquerque, NM 87103 505-842-6461 FAX 505-842-6471

nma

• vol. 31 no.'s 3 & 4 • may-june-july-august 1990 • new mexico architecture

□ □ □ □

We are most pleased to report to our readers that Stephen Zimmer's article, "Villa Philmonte: Mansion in the Wilderness" (*NMA* Sept/Oct 1989), was reprinted in its entirety in the July 1990 issue of *Phoenix Home and Garden* magazine, which has a circulation of over 37,500. Five of the black and white historical photographs were included. Three of photographer Bob Brazell's spectacular color photographs of the interior of the mansion were also reprinted, with two enlarged to full-page.


Congratulations to Steve and Bob for your fine work. It is gratifying to the staff of *NMA* to be able to say: "You saw it first here."

The *NMA* staff is extremely grateful to the following financial contributors who, in addition to our generous advertisers, have made possible this issue of *New Mexico Architecture*:

□ □ □ □

Cover Sponsorship:
Antoine Predock, FAIA Architect
Albuquerque, New Mexico
Robin E. Parke Associates, Inc.
Phoenix, Arizona
3D/International
Phoenix, Arizona

Additional Contributions:
The Gardner Partnership, AIA
Cedar City, Utah
Anderson Mason Dale, AIA
Denver, Colorado
Michael Brendle Architects, AIA
Denver, Colorado
MHT Architects, Inc., AIA
Salt Lake City, Utah
RNL Designs, AIA
Denver, Colorado

 The Editor's Column	3
Celebrate Architecture Albuquerque Chapter 1965-1990	6
NMA News 1989-90 BMW Raffle Winner	7
1989 Awards For Excellence Western Mountain Region	9
Walt Whitman Elementary School, Littleton, Colorado	10
Arizona State University Fine Arts Center, Tempe, Arizona	11
Arizona State University West Campus, Phoenix, Arizona	12
Macky Auditorium Concert Hall, Boulder, Colorado	13
Lookout Mountain School, Golden, Colorado	15
Delta Air Lines Reservations and Training Center, Salt Lake City, Utah	15
Navy/Marine Corps Reserve Training Center, Aurora, Colorado	16
Denver Permit Center, Denver, Colorado	17
Lambing Shed, Paragonah, Utah	17
Professional Directory	21
Advertisers' Index	22

(Cover—Arizona State University Fine Arts Center, Tempe, Arizona—Antoine Predock Architect, FAIA—Photographer—Timothy Hursley, The Arkansas Office)

—Official Publication of the New Mexico Society of Architects, A.I.A.—

Society Officers

President—Bill Freimuth
President-Elect—Tomás Méndez
Secretary—Michael Beltran
Treasurer—Joe Browning
Director—John Alejandro
Director—David Carr
Director—Carlyn Rodahl
Director—Allen R. Taylor
Director—George Trosky
Director—James Vorenberg
Director—Patricia D. Willson
Executive Director—Sema Wynne

New Mexico Architecture - Committee

John P. Conron, FAIA/FASID—Editor
Carleen Lazzell—Associate Editor / Advertising Director
Barbara MacPherson—Advertising Assistant
Christopher Larsen, AIA—Chairman
Van Dorn Hooker, FAIA—Past Chairman
George Anselevicius, FAIA
Terrance J. Brown, AIA
Marjorie Hooker, AIA
Carolyn Kinsman, Designer
Charles E. Nolan, Jr., AIA
George C. Pearl, FAIA
Glade F. Sperry, Jr., AIA
V.B. Price—Architecture Editor, "ArtSpace"
Don P. Schlegel, FAIA
Christopher Wilson, Architectural Historian

International Standard Serial Number—0545-3151

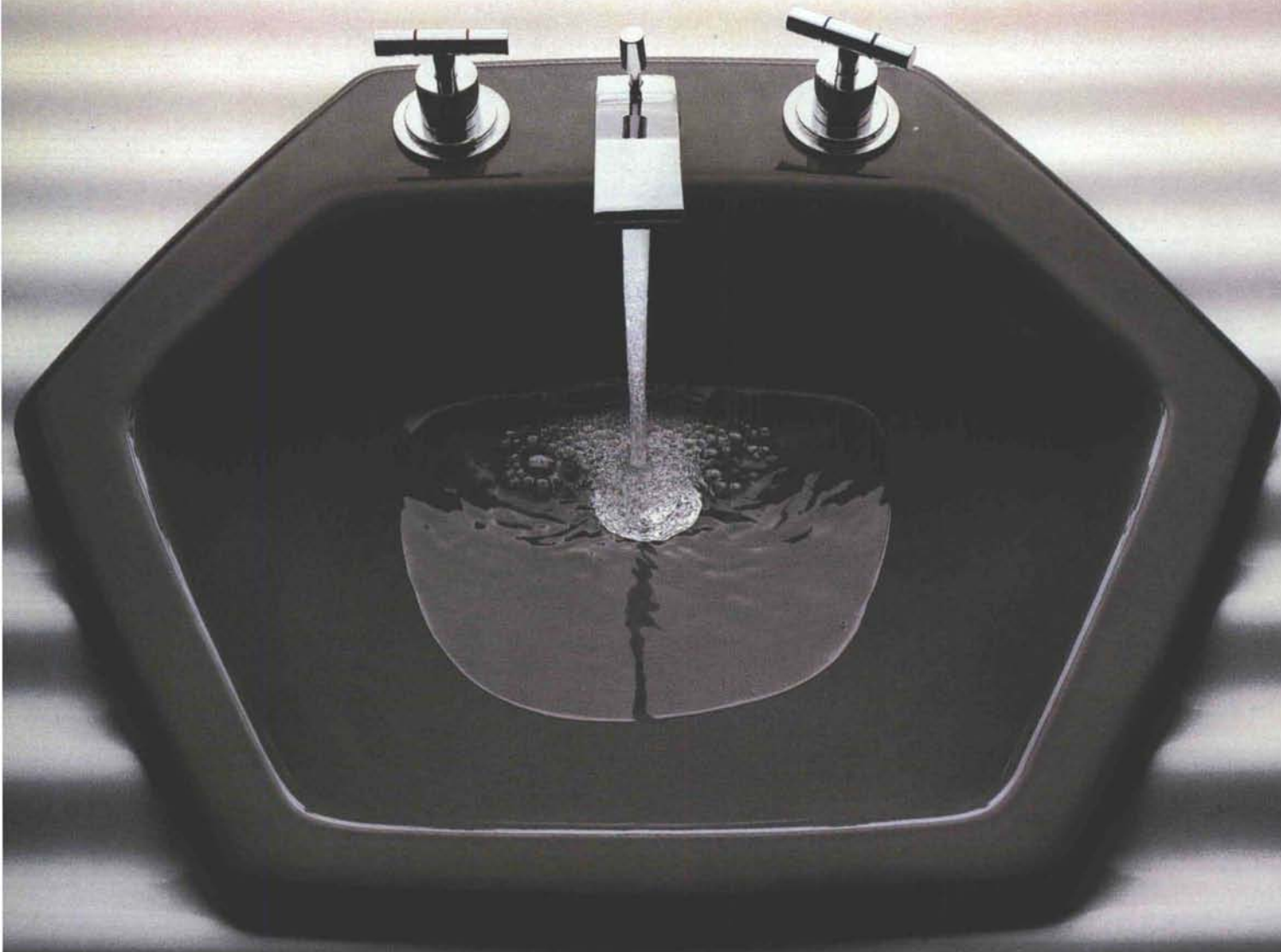
May-June-July-August 1990 / 3

Choosing Sides

Hexsign™ Lavatory and Taboret® Faucet. Side with better design and color on your next project. Kohler's distinctive shapes and exciting color range are not just for residential use. Enameled cast iron fixtures and cast brass faucets stand up to heavy usage in commercial applications. The cost stays within budget. And everyone knows Kohler's reputation for quality.

When you can have so many designs in so many colors, why go white? Make your project look as good as it functions, by simply choosing Kohler.

THE BOLD LOOK
OF **KOHLER**®



THE BOLD LOOK
OF

KOHLER

Showroom Hours M-F 8:00-5:00
SAT 8:00-12:00

• **PHC**

SUPPLY COMPANY

1000 Siler Park Road

Santa Fe, NM • Phone 471-1811

• **ACTIVE**

SUPPLY COMPANY

1500 Candelaria NE • Albuquerque, NM • Phone 345-8587

541 Laser Road NE • Rio Rancho, NM • Phone 892-4401



DIVISIONS OF DAHL U.S. HOLDINGS, INC.



1985 NMSA Honor Award: 612 First Street
Van Gilbert Architect



1970 AC/AIA Merit Award:
UNM School of Business & Administration
John Reed



1983 NMSA Honor Award:
North Baretas Housing for the Elderly
Westwork Architects



1982 NMSA Honor Award:
Dietz Farm Plaza
Robert Peters

CELEBRATE ARCHITECTURE!

The Albuquerque Chapter/AIA will celebrate its **25th anniversary** on Friday & Saturday, Sept. 21-22, at the La Posada Hotel in Albuquerque. All Chapter members and the public are cordially invited to join in the celebration. Mayor Louis Saavedra has proclaimed Sept. 16-22 as Celebrate Architecture Week.

Friday evening, the festivities will kick off with a gala banquet in the La Posada Ballroom. David Braden, FAIA, of the Dallas Chapter and AC/AIA President, Allen Taylor, will host the past presidents of the Chapter and other New Mexican dignitaries for an evening of fun and retrospect, featuring the presentation of the AC/AIA 25 Year Award. Great food and great fun for just \$25 per person.



1975 NM Arts Comm Award:
Main Public Library
Stevens Mallory Pearl
& Campbell



1980 NMSA Honor Award: Albuquerque Museum
Antoine Predock

Albuquerque Chapter - American Institute of Architects

1965-1990



1965 AC/AIA Merit Award: Robb Residence
Don Schlegel



1965 AC/AIA Honor Award:
UNM College of Education
Flatow Moore Bryan & Fairburn

Saturday morning, a Downtown Tour celebrating some of the Albuquerque Chapter's architectural contributions will set forth from the La Posada and return for a thought-provoking afternoon forum on "Architecture and the Environment", sponsored by The Albuquerque Conservation Association.

A special **Celebrate Architecture!** commemorative exhibition, featuring the work of Albuquerque Chapter architects, will be on display at the Albuquerque Plaza from September 16-20, at the La Posada throughout the anniversary celebration until the 28th, then move on to various locations throughout Albuquerque. Don't be left out!

Come celebrate our past and future together! Make your reservations through Sema at the Chapter office (842-8744) today.



1970 AC/AIA Merit Award:
PNM Building
W C Kruger & Associates



1986 NMSA Honor Award: Belen H.S. Gym
Cherry/See, Architects



1967 AC/AIA Honor Award & 1976 WMR Award:
UNM Arena (The "Pit")
The Boehning Partnership



1988 NMSA Award: UNM Valencia Campus
Barker Friedman & Associates

Don't get caught with your plants down

**Design with
healthy plants
from the start!**

Plant Designs has a great selection
of top-quality indoor plants
and accessories

- * Exotic and Unusual Plants
- * Atrium-sized Trees
- * BIG Cactus
- * Designer Containers
- * Design and Installation



3219 Candelaria NE, Albuquerque, NM
888-5821

NMA NEWS

Bart Prince Wins 1989-90 BMW Raffle



Winner Bart Prince in his new 525i BMW

For those of you who have not heard, Albuquerque architect Bart Prince won the fundraising Raffle for *New Mexico Architecture*. Congratulations, Bart, for buying that winning ticket! The prize was a 525i BMW, two roundtrip American Airlines tickets to Europe and two thousand dollars cash. However, Prince declined to accept the money, requesting the amount be added to the net proceeds.

The initial planning meeting for the Raffle was held last August. Knowing that professional assistance was necessary, the committee selected Katy Bemiss of KSB Communications to handle all organizational matters, such as: negotiating for the BMW and the airline tickets; poster, flyer and ticket printing and distribution; bookkeeping and all the other duties necessary to make the Raffle run smoothly. And, as in 1987, George Pulakos of Pulakos and Alongi, Ltd., Certified Public Accountants, monitored the Raffle.

With the December 1st deadline drawing near, and less than 200 tickets sold, the committee had to make a decision. Either the cause would have to be abandoned and all monies refunded or the drawing date would have to be extended. After great deliberation, the committee decided to extend the deadline to December 28. When the second drawing date arrived, the committee was still far short of even covering expenses. It was at this time that the committee opted for a third and final extension.

Because of the anticipated good turnout for the Construction & Architectural Suppliers Show (March 29-30) at the State Fair Grounds in Albuquerque, the final drawing

was scheduled for 6 p.m. on Friday, March 30, 1990 — the last day of the event. Much to the committee's delight, nearly 100 tickets were sold — and most of the profit realized — during those last two days.

Bart Prince bought one ticket early in the Raffle before the original December first deadline. Each time the drawing date was extended, letters were sent to purchasers advising them of the schedule and encouraging them to buy more tickets in order to speed up the process of "The Raffle that would not die." As it turned out, it was Bart's third purchase which won him the grand prize.

Out of a total of 560 tickets sold, the persons selling more than ten tickets each were: Carleen Lazzell (66); Chris Larsen (47); Bob Campbell (43); John Conron (42); Roy Hertwick (14); Bob Kitts (14); Stan Davis (13) and Barbara MacPherson (10).

Since there was a lack of interested parties to sell tickets (and to buy tickets), the Raffle was not as successful as hoped. The funds raised were approximately \$13,000, including the gracious contribution from Bart Prince.

Total operating costs were less than in 1987, even with the added expense of professional services fees. If we had had the support and cooperation of more members of the architectural community and had sold as many tickets this year as in 1987, we would have cleared more than \$37,500 — more than enough to retire the debt to our printer and create a "nest egg" for the future. Although it was gratifying to send Hall-Poorbaugh Press such an amount of money (almost \$13,000), the 1989-90 Raffle was a heavy load for a few hard-working volunteers.

DAVIS & ASSOCIATES INC.

P O Box 2184
Santa Fe
New Mexico
87501

GENERAL CONTRACTORS

(505)
988-2894



KITTS ENTERPRISES INC.

5815 EDITH BOULEVARD, NE
ALBUQUERQUE, N.M. 87125

Alder, Ash, Basswood, Birch,
Aromatic Cedar, Spanish Cedar,
Cherry, Honduras Mahogany,
Phillipine Mahogany, Maple, Red
Oak, White Oak, Ponderosa Pine,
Sugar Pine, Poplar, Sassafras,
Walnut, and Willow.

Stairway Components, Adhesives,
and Abrasives.

Custom Milling and Hardware.

In Fact — Over 800 Items in Stock
for High Quality, Architectural,
Cabinet, Furniture, and Finish Work!

(505) 345-8135

New Mexico Toll Free:
1-800-432-6820

Outside New Mexico Toll Free:
1-800-545-6104



HYDRO CONDUIT CORPORATION

*"Congratulations to Albuquerque Chapter,
AIA on your 25th Anniversary"*

Hydro Conduit Corporation...
A producer of precast/prestressed concrete
products for the construction industry.

2800 SECOND STREET
POST OFFICE BOX 1609
ALBUQUERQUE, NEW MEXICO 87102
PHONE: (505) 247-3726

AWARD FOR EXCELLENCE IN ARCHITECTURE

In 1989 the Western Mountain Region of the American Institute of Architects awarded nine *Awards of Excellence in Architecture* to members in the region. The awards, which are presented annually were handed out at the WMR conference in October.

Over 150 entries were submitted from the six state area. A jury of three distinguished architects met in San Francisco, California on September 30, 1989 to select the outstanding projects. The jury was chaired by Ms. **Allison Williams** of Skidmore, Owings & Merrill's San Francisco office. Serving with Ms. Williams were Mr. **William Turnbull, Jr.**, partner in the firm of MLTW/Turnbull Associates and Mr. **Mark Tortorich**, Project Director with Public Building Services, Region 9, General Services Administration. The jury established its own procedure and determined the number of projects which it deemed to be excellent. Those projects are presented here.

Walt Whitman Elementary School
Media Center Addition
Littleton, Colorado

**Michael Brendle
Architects
Denver, Colorado**

Jury Comments

This media center is an austere complement to the existing school building, yet it possesses some of the playfulness of childhood.

The modular, straightforward structural and mechanical expression, the suspended ceiling elements, and the window placements invite, by space and light, little people to cluster for storytelling.

This is a successful example of high-tech architecture brought down to a child's understanding.

Project Data

Client

Littleton Public Schools

General Contractor

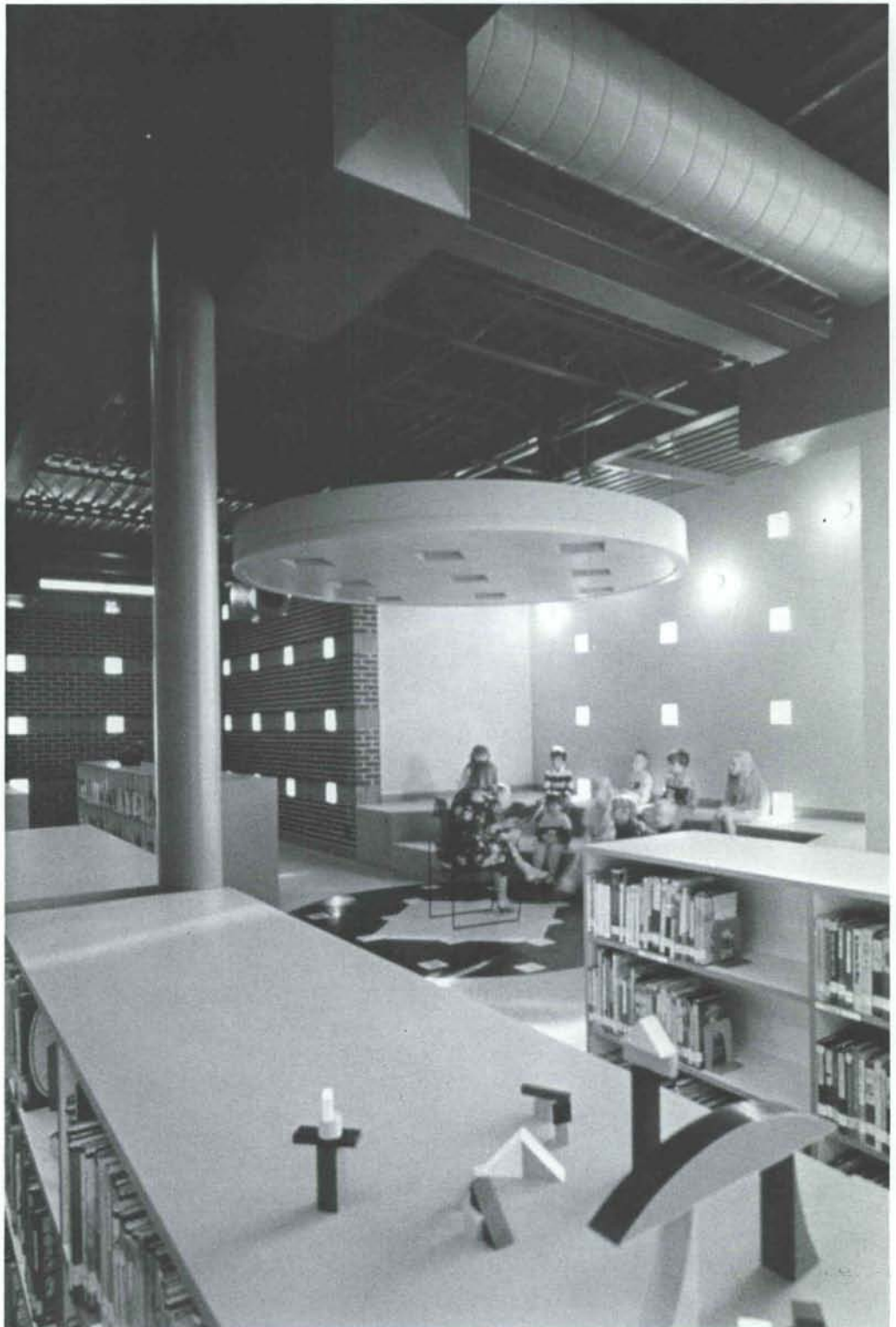
Weaver General Construction, Inc.

Structural Engineer

Neujahr and Gorman

Mechanical/Electrical Engineer

Gordon, Gumeson and Associates, Inc.



AWARD FOR EXCELLENCE
IN ARCHITECTURE

Arizona State University Fine Arts Center Tempe, Arizona

Antoine Predock
Architect
Albuquerque, New Mexico

Jury Comments

This building is a complex outcropping of stucco and concrete on the A.S.U. campus.

The geometrics and the circular brick wall make this project comprehensive to its users. The multiple levels lend drama to the users and performers as well.

The daytime and nighttime states offer a diversity of readings which contribute to its landmark qualities.

Project Data

Client

Arizona State University

Project Architects

Geoff Beebe, Jon Anderson

Project Team

Ron Jacob, Tim Rohleder, John Fleming, Kevin Spence

General Contractor

PCL Construction Services,
Tempe, Arizona

J.R. Andrews, Project Manager

Construction Manager

3D/International,
Ward Simpson, A.I.A.

Landscape Consultant

James Abell and Associates

Structural

Robin E. Parke Associates, Inc.

Mechanical

Baltes Valentino Associates

Security

E.B. Brown

Acoustical and Sound Systems

Smith, Fause and Associates Inc.

Lighting

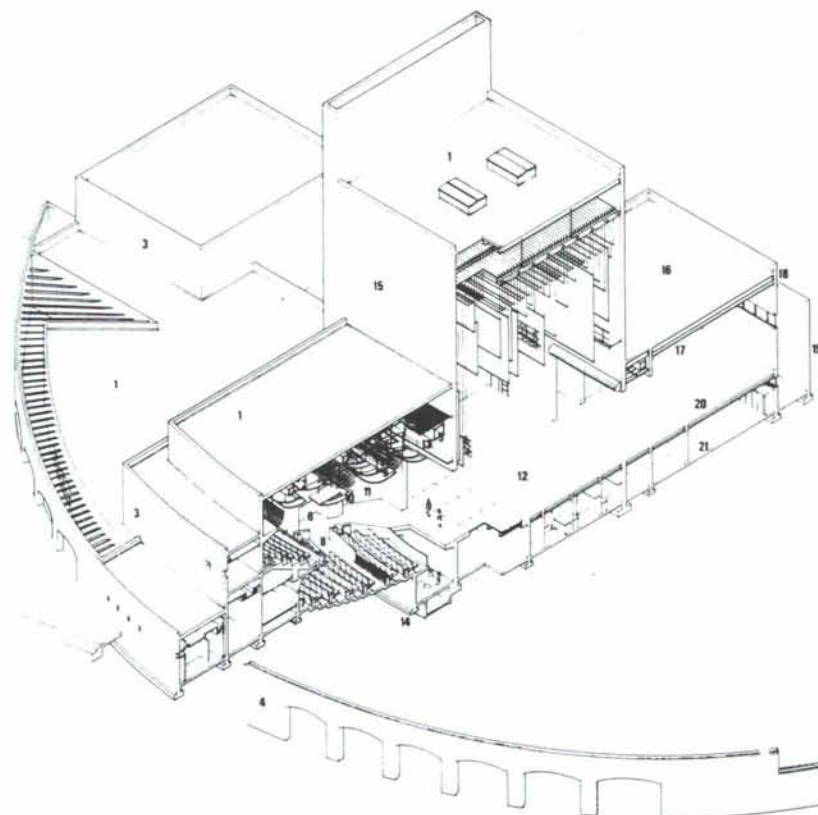
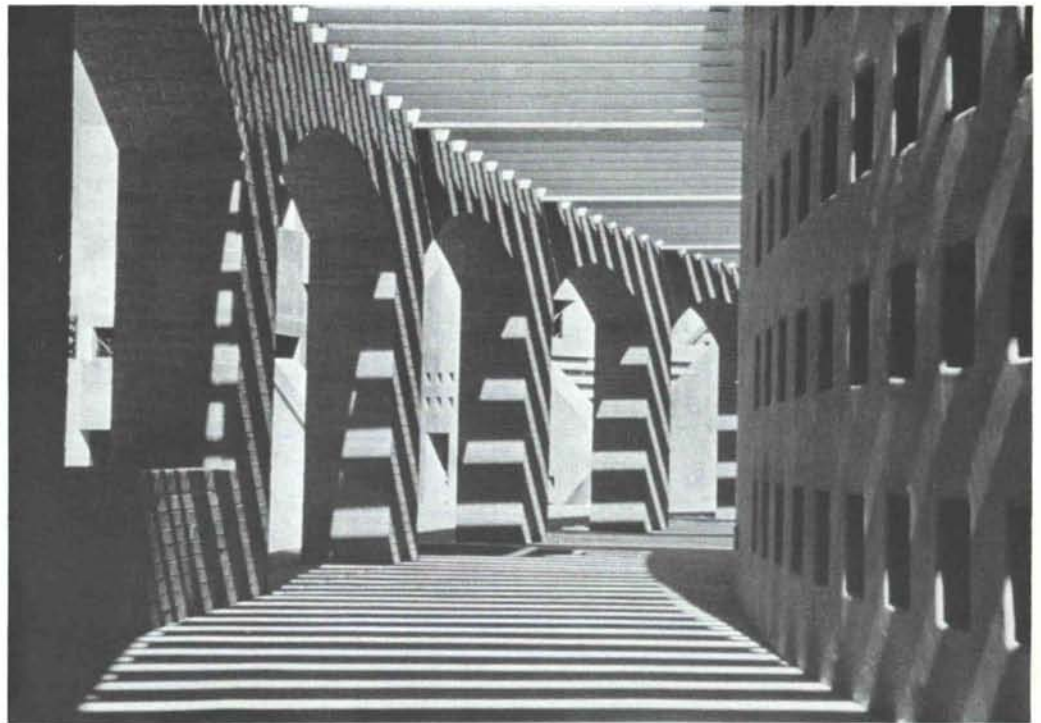
Richard C. Peters

Photographer

Timothy Hursley, The Arkansas Office

Theatre Design Consultant

John Von Szeliski



THEATRE SECTION LEGION

- 1 Single ply membrane roof with light colored gravel over tapered foam insulation
- 2 Steel trusses with metal deck and acoustically inert concrete topping slab
- 3 Stucco finish on reinforced concrete masonry wall
- 4 Red brick arcade cum abutment
- 5 Air condition supply will be located at the ceiling level
- 6 Air condition return will be located at low side wall position
- 7 Acoustically absorptive auditorium back wall
- 8 Carpet floor finish on cast in place concrete slab
- 9 Steel framed cat walk to be suspended from the roof structure
- 10 Shaped acoustically reflective, auditorium ceiling will be suspended from the roof structure
- 11 Shaped acoustically reflective side walls enclose cove lighting positions and provide plenum space for HVAC system
- 12 Wood stage floor over cast in place reinforced concrete slab and beam structure
- 13 Speaker location for speech reinforcement and sound effects
- 14 Reinforced concrete footing below third orchestra row for future addition of orchestra elevator
- 15 Cast in place reinforced concrete stage house with exterior stucco finish and black Neoprene acoustically absorptive interior panels
- 16 Steel beam and deck with light weight concrete topping slab
- 17 Acoustical ceiling suspended on light gauge metal framing
- 18 Stucco finish on reinforced concrete masonry wall, exposed in shop interior
- 19 Exposed reinforced concrete retaining wall
- 20 Cast in place reinforced concrete floor slab and beam system
- 21 Concrete slab on water proofing membrane

**AWARD FOR EXCELLENCE
IN ARCHITECTURE**

Arizona State University West Campus Phoenix, Arizona

Anderson DeBartolo Pan, Inc. Tucson, Arizona

Jury Comments

This building is a thoughtful first step toward making a memorable educational space in a campus otherwise devoid of these qualities. It will set the tone in quality and inspiration for future development in the west campus.

The jury appreciated the restrained, disciplined, and elegant use of these materials in this harsh desert climate. This one can best be described as a "Florentine Chandigarh."



Project Data

Client

Arizona State University

Fletcher Library

General Contractor

Nielsen Construction Company

Mechanical Engineer

Lowry Sorenson Willcoxson

Electrical Engineer

James Evans & Associates

Structural Engineer

Robin E. Parke Associates, Inc.

Landscape Design

G. William Larson Associates

Interior Design

Michaels & Associates

Sands Instructional Center

General Contractor

D.L. Withers Construction Company

Mechanical/Electrical Engineer

Lowry Sorenson Willcoxson

Structural Engineer

Anderson DeBartolo Pan, Inc.

Civil Engineer

Cella Barr & Associates

Landscape Design

James Abell and Associates

Interior Design

Eric Bron



AWARD FOR EXCELLENCE IN ARCHITECTURE

Macky Auditorium Concert Hall Boulder, Colorado

**Midyette/Seieroe
& Associates, P.C.
Boulder, Colorado**

Jury Comments

The jury was impressed by the sensitive conversion of this historic auditorium space into a state of the art concert hall.

The old spirit is maintained and the sight lines and acoustics are improved. Box seats which were added quite successfully strengthen the rhythm of the space.

The new work is in keeping with and supportive of the original space.

A most successful appointment of colors in the carpet and furniture selections also impressed the jury.



Project Data

Client

University of Colorado

General Contractor

Fischer Construction Company

Acoustical Consultant

R. Lawrence Kirkegaard & Associates

Technical Theater Consultant

S. Leonard Auerbach & Associates

Structural Engineering Consultants

Richard Weingardt Consultants, Inc.

Mechanical Engineering Consultants

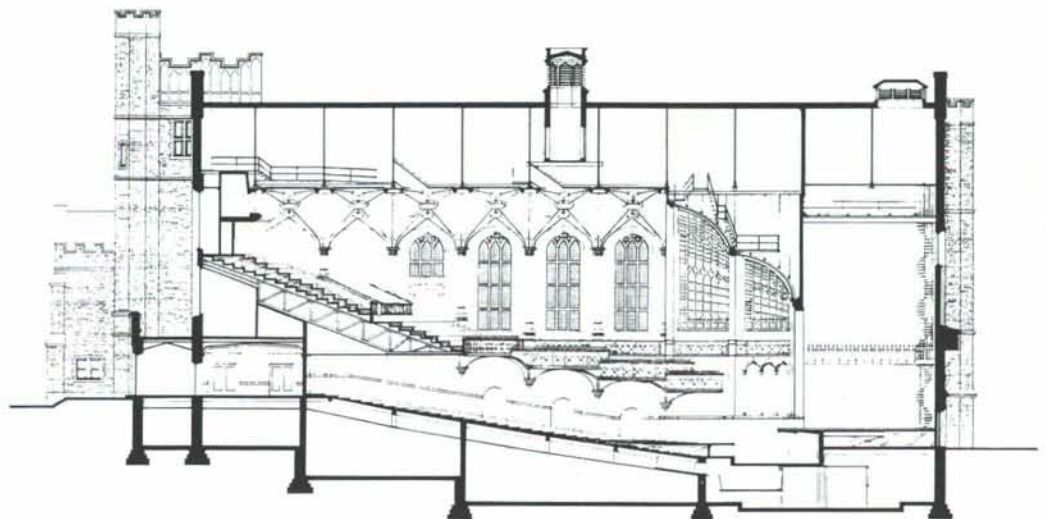
Sturm Ballard, Inc.

Electrical Engineering Consultants

Gambrell Engineering, Inc.

Photographer

Michael Anthony



BUILDING SECTION
0 10 20 30 FT.

AWARD FOR EXCELLENCE
IN ARCHITECTURE

American Announces Service To The Land Down Under.



American Airlines proudly announces service to Australia and New Zealand. With flights four days a week to Sydney and three days a week to Auckland.

And, American Airlines can take you to all the wonders of the Land Down Under with affordable Fly ~~A~~Way VacationsSM packages to both Sydney and Auckland.

So make plans to discover glorious Australia. The splendor of Sydney. The untamed Outback. The Great Barrier Reef. Or head for New Zealand, where you'll find the most breathtaking scenery in the world. For more information or reservations, contact your Travel Agent or American at (800) 433-7300.

American Airlines
Something special in the air.[®]

**RNL Design/Anderson
Mason Dale, P.C. Architects
Denver, Colorado**

Jury Comments

Detention facilities normally evoke images of hostility and are not conducive environments for preparing inmates for their return to society. This project, to the contrary, establishes and characterizes a more positive meaning and attitude.

If architecture affects lifestyle, as we hope it does, this will be a most successful project.

Stylistically and successfully Bottasque...

Project Data

Client

Colorado Division of Youth Services
Architects

Steve Newman, Ron Mason

General Contractor

Maranatha Construction-
Englewood, Colorado

Structural Engineer

Martin/Martin, Inc.

Electrical Engineer

Gordon, Gumeson and Associates, Inc.

Mechanical Engineer

McFall-Konkel & Kimball,
Consulting Engineers

Photographer

R. Greg Hursley, Inc.

**MHT Architects Inc. and
Lord & Sargent, Inc.
Salt Lake City, Utah**

Jury Comments

This project represented to the jury a most successfully simple volumetric and sculptural play of masses enlivened by the subtly striped masonry.

For its size, it is a most friendly structure in the landscape, creating an unanticipated addition to the environment given the program use.

The fire stairs serve to introduce a diagonal in the otherwise horizontal and cubic composition.

Project Data

Client

Delta Air Lines, Inc.
Atlanta, Georgia

General Contractor

Okland Construction Company,
Salt Lake City, Utah

Structural Engineer

Reaveley Engineers and Associates

Mechanical Engineers

Olsen & Peterson

Electrical Engineers

Becherer Nielson Associates

Mechanical/Electrical Engineers

R.L. Daniell & Associates

Acoustics

Acoustical Engineers Inc.

Landscape Architects

Del R. Cook & Associates

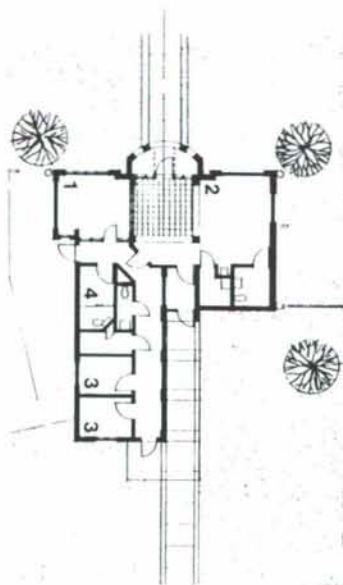
General Contractor

Okland Construction Company
Salt Lake City, Utah

Photographer

Jonathan Hillyer Photography, Inc.

**Lookout Mountain School
Golden, Colorado**

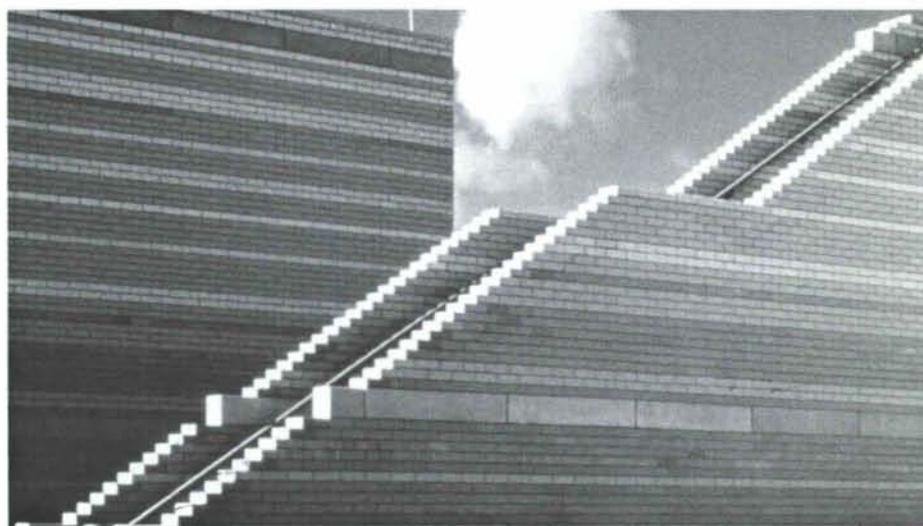


INTAKE KEY

1. Control Room
2. Waiting Room
3. Interview
4. Search



**Delta Air Lines Reservations and Training Center
Salt Lake City International Airport**



**AWARD FOR EXCELLENCE
IN ARCHITECTURE**

Navy / Marine Corps Reserve Training Center Aurora, Colorado

**Anderson Mason Dale
P.C.
Architect
Denver, Colorado**

Jury Comments

This project possesses the institutional discipline normally associated with the naval lifestyle.

Most memorably, the metal skylights which convey the walkways allow light through, creating shadows which animate the space and create a constantly changing world, offsetting the rigor of military conformity.

The jury was impressed that organizationally the plan is straightforward, personifying the mechanical military organization. The architect is commended for enriching the quality of the spaces through this simply elegant daylighting strategy.

Project Data

Client

*Northern Division
Naval Facilities Engineering Command*

Builder

*Alvarado Construction
Denver, Colorado*

Structural Engineer

Martin/Martin, Inc.

Mechanical/Electrical Engineer

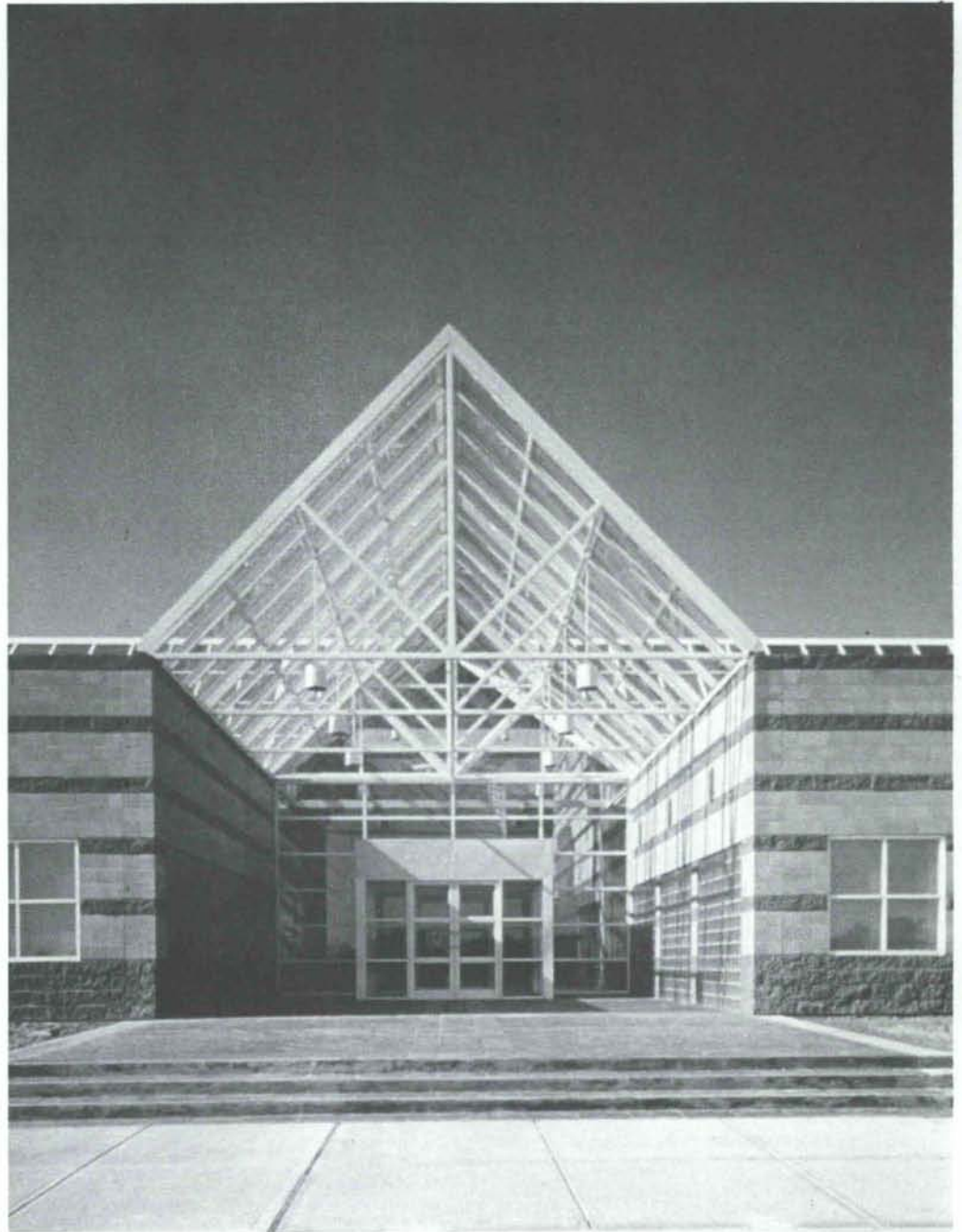
Beling Consultants, Inc.

Landscape

Phillip E. Flores

Photographer

R. Greg Hursley, Inc.



**AWARD FOR EXCELLENCE
IN ARCHITECTURE**

Denver Permit Center
Denver, Colorado

**C.W. Fentress
J.H. Bradburn and
Associates, P.C. Architect**
Denver, Colorado

Jury Comments

The jury was impressed by the articulate handling of this urban site to improve upon the urban fabric through use of compatible materials and the creation of a through block connection. This successful renovation incorporates municipal offices in the spirit of civic-minded architecture. The rehabilitated facade possesses a contextual civic character.

A splendid example of urban renewal.

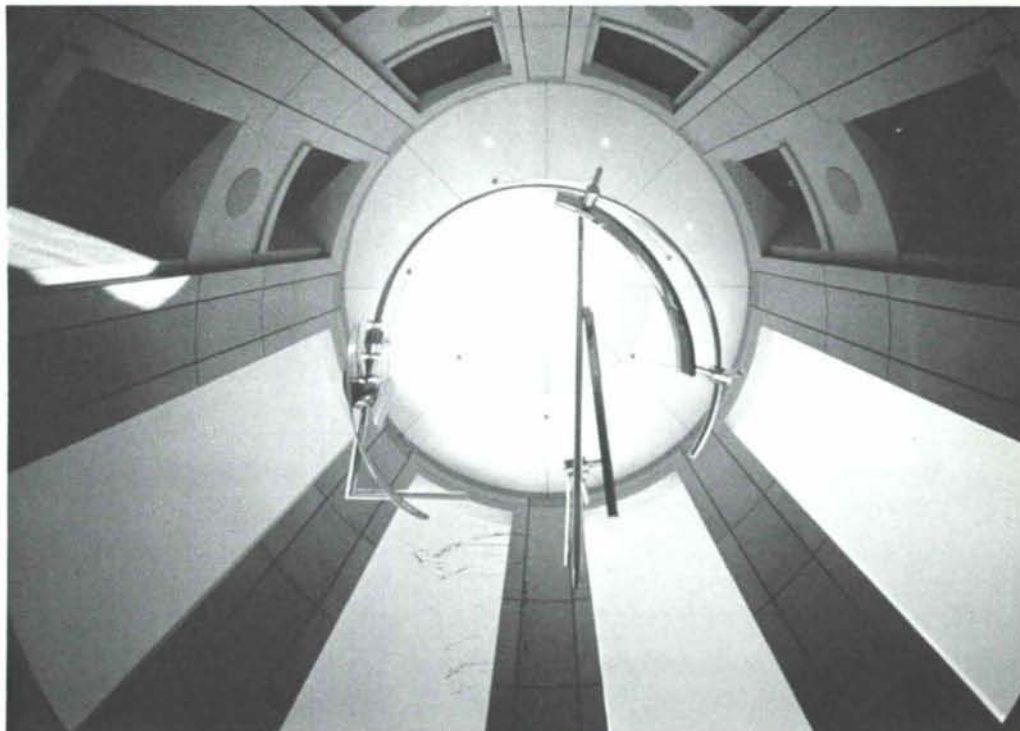
Project Data

Client

City and County of Denver

Construction Manager

Turner Construction Company



Lambing Shed
Paragonah, Utah

**The Gardner Partnership,
Architects**
Cedar City, Utah

Jury Comments

This is an exquisite example of mundane simplicity, care, and thoughtfulness.

Agricultural architecture in the best Palladian sense.

The jury trusts that the lambs enjoy the architecture as much as we did.

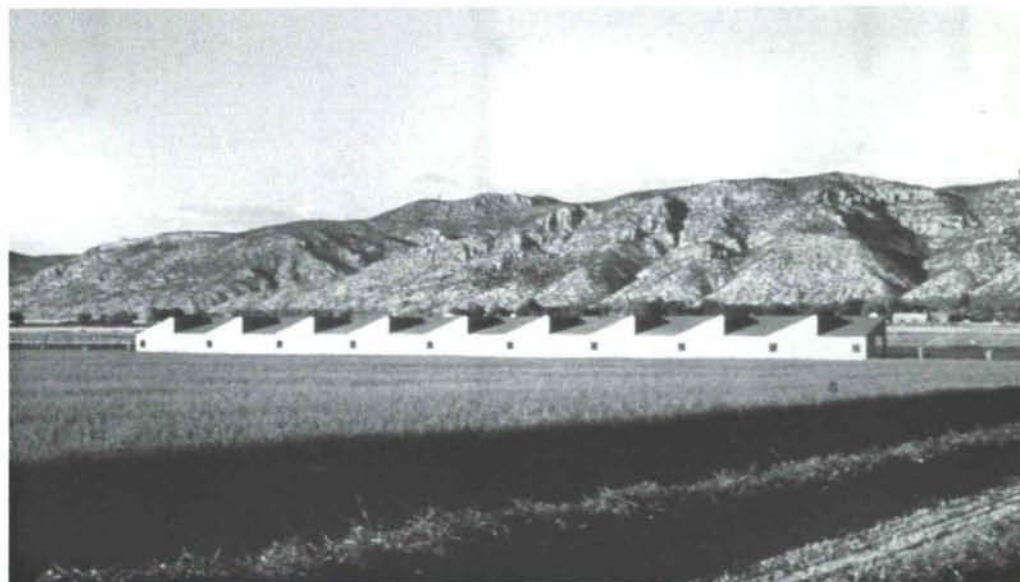
Project Data

Client

Gardner Livestock

Builder

Val Barton and Paul Schmitt

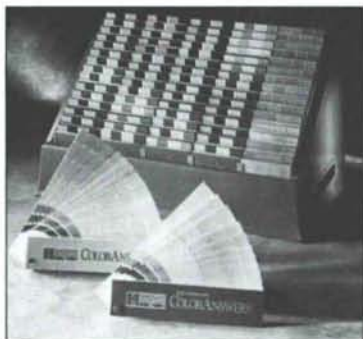


AWARD FOR EXCELLENCE
IN ARCHITECTURE

COLORANSWERS™

Today's Answers to Tomorrow's Color Questions

- ♦ The industry's most complete color specifying system
- ♦ Features large color samples organized in a compact, easy to use kit
- ♦ Over 1,200 interior and exterior colors
- ♦ Quality Products for over 120 years

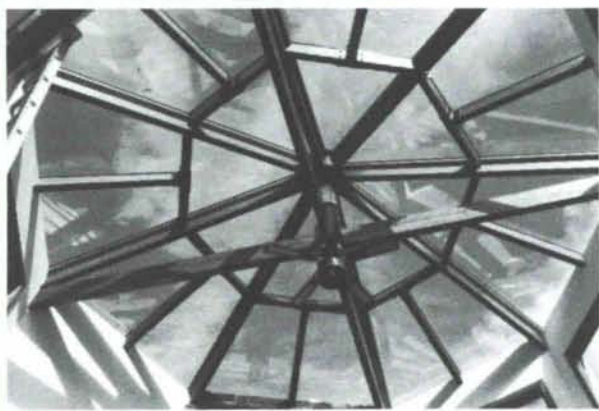


Call our 800 number for:

- ♦ Assistance with spec writing
- ♦ Personal answers
- ♦ Call 800-321-8194
800-362-0903 (In Ohio)



Ask Sherwin Williams
— Architects Do



*If you can think it...
we can glaze it.*

New Mexico's specialty glazing experts.

- SureSeal™ skin glazing can do any geometric shape, slopes or vertical
- You determine the glazing you want
Low-E, Heat Mirror, solar tints
- Components only or installed

Brother Sun / US Sky

2907 Agua Fria, Santa Fe, NM 87501

1-800-323-5017 • FAX 505-471-5437

505-471-5157

Call or Fax us for quotes, bids, and design assistance

BREAKING NEW GROUND.

At Jaynes our goal is to meet *your* goals, on *your* timeline, without compromising quality. If along the way we also happen to exceed your expectations, it won't be the first time.

Your Single Source Builder
Albuquerque 345-8591
Farmington 326-3354
License No. 4866



Insurance for the Design Professional
New Mexico's
Professional Engineers
and Architects

**Alexander
& Alexander**

**BONDING &
INSURANCE**

Since 1925

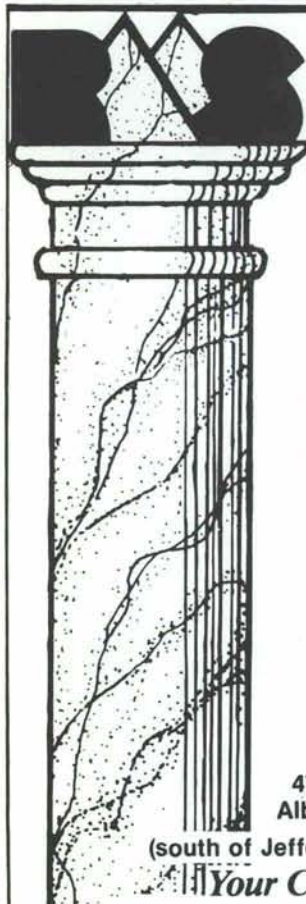
Call Bob Dean, Professional Liability Specialist

TELEPHONE (505) 883-8282

N.M. WATS 1-800-432-5882

Suite 200
6000 Uptown Blvd. NE

P.O. Box A
Albuquerque, N.M. 87103



- **MARBLE**
- **GRANITE**
- **TRAVERTINE**
- **SLATE**
- **LIMESTONE**
- **SANDSTONE**
- **CANTERA**

— — — FOR — — —

- Kitchen counters
- Vanity tops
- Fireplace surrounds
- Flooring
- Interior/Exterior cladding
- Installation/Restoration
- Architectural Assistance
for ANY type of Natural
Stone

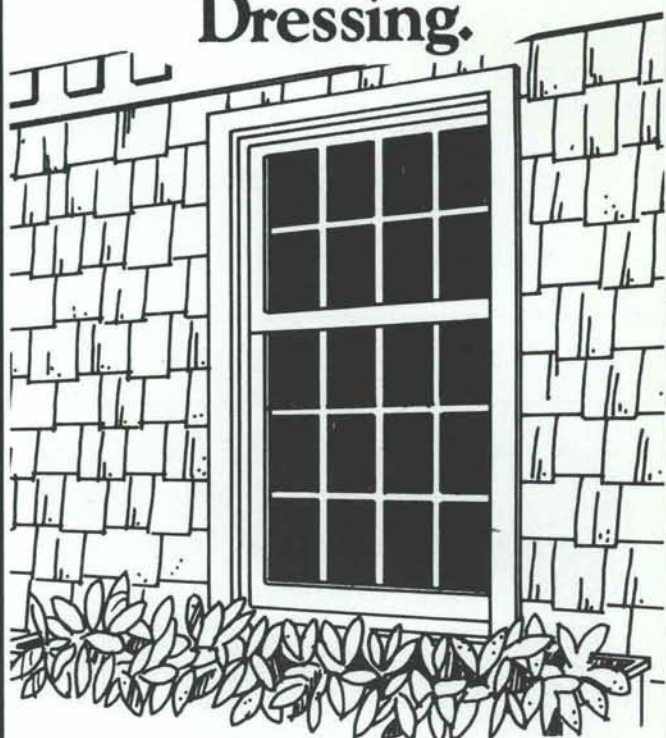
505-345-8518

**ROCKY MOUNTAIN
STONE COMPANY INC.**
4741 Pan American Frwy. N.E.
Albuquerque, New Mexico 87109

(south of Jefferson on West Frontage Road)

Your Custom Marble Source

True Window Dressing.



Williamsburg true divided lites by Weather Shield add classic style to your home.

It's amazing how this historic window treatment has made it onto the threshold of the 21st century.

Born out of the need for small window panes years and years ago, the style is still preferred by discriminating homeowners today.

Perfect by Weather Shield for today's energy needs, these individual insulated glass lites offer classic beauty with tomorrow's technology.

All-wood interiors, ready for staining or painting, are available with natural, primed or white/adobe/desert tan Poly I or aluminum clad low-maintenance exterior finish options.

Select your window or door style and choose Weather Shield true divided lites. Then see and buy them here...



Western Building Supply Co., Inc.

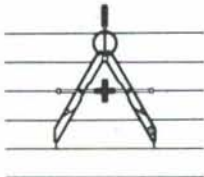
4201 Paseo del Norte, NE

Albuquerque, New Mexico 87113

(505) 823-2500

Professional Directory

ARCHITECTURE+PLUS



P.O. Box 2106 Roswell, NM 88201 (505) 623-5700



Cost Consultant
and Estimator

RICARDO A. BACA, P.E., C.P.E.

1116 Wyoming Ave.
El Paso, Texas 79902
915/533-1176

In New Mexico
Call
505/883-9686



Sergent, Hauskins & Beckwith
CONSULTING GEOTECHNICAL ENGINEERS

(505) 884-0950

4700 Lincoln Road, NE • Albuquerque, New Mexico 87109

ALBUQUERQUE • EL PASO • PHOENIX • RENO
SALT LAKE CITY • SANTA FE • TUCSON



WEBB-LEONARD-VAUGHAN
ARCHITECT-ENGINEER
3700 COORS ROAD N.W.
ALBUQ., N.M. 87120

(505) 831-0434



4600 C MONTGOMERY BLVD NE
ALBUQUERQUE, NM 87109
505/883-8682

BRIDGERS & PAXTON CONSULTING ENGINEERS, INC.
MECHANICAL ENGINEERING
CHAVEZ-GRIEVES CONSULTING ENGINEERS, INC.
CIVIL/STRUCTURAL ENGINEERING
TIERRA DEL SOL ENGINEERING, INC.
ELECTRICAL ENGINEERING

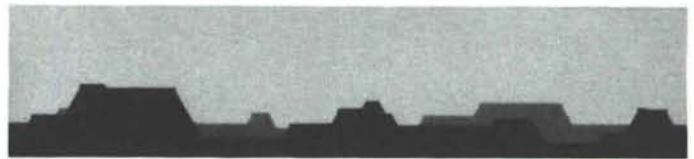


ARCHITECTS • ENGINEERS • CONSTRUCTORS

COMMERCIAL • INDUSTRIAL
INSTITUTIONAL • GOVERNMENTAL

6501 AMERICAS PARKWAY NE Suite 700 ALBUQUERQUE, NM 87110 • (505) 889-4100

Holmes & Narver



STEVENS, MALLORY, PEARL & CAMPBELL, P.A.

ARCHITECTS
115 AMHERST DRIVE, S.E.
ALBUQUERQUE, NEW MEXICO

505 255-8668
87106



Richard Yates, A.I.A.

Richard Yates
Architects, Inc.

428 Sandoval
Santa Fe
New Mexico 87501
505/988-1913

Listing space in this Professional Directory
available through



Carleen Lazzell,
Associate Editor/Advertising Director

NEW MEXICO ARCHITECTURE
8515 Rio Grande Boulevard NW
Albuquerque, NM 87114
505-898-1391



Boyle Engineering Corporation

consulting engineers

Suite 600-E
6400 Uptown Boulevard, N.E.
Albuquerque, New Mexico 87110

505 / 883-7700

W H H

W.H. HARLAN & ASSOCIATES, INC.
Noise Control Systems

"When Quiet Is Important"

Music Practice Rooms
High Pressure Pipe Insolation
Broadcast
Welding Screens
Video Productions
Panel Absorbers
Personnel Enclosures
Baffles
Noise Barriers
Quilted Faced Fiberglass Absorbers
Noise Control Curtains
Damping Compounds

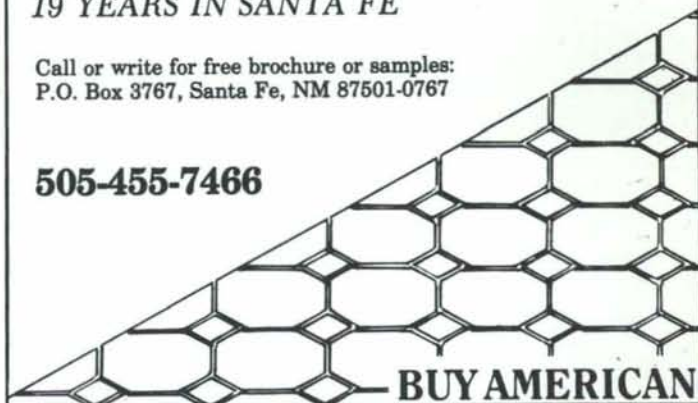
Post Office Box 37260
Albuquerque, New Mexico 87176
(505) 275-1415

Watson's TILES DE SANTA FE HANDMADE FLOOR TILE

19 YEARS IN SANTA FE

Call or write for free brochure or samples:
P.O. Box 3767, Santa Fe, NM 87501-0767

505-455-7466



new mexico architecture

nma

Published bi-monthly by New Mexico Society of Architects, American Institute of Architects, a non-profit organization. Editorial Correspondence should be addressed to John P. Conron, Box 935, Santa Fe, N.M. 87504. (505) 983-6948.

Editorial Policy: Opinions expressed in all signed articles are those of the author and do not necessarily represent the official position of the publishing organization.

Additional copies of NMA available from John P. Conron, FAIA/FASID, P.O. Box 935, Santa Fe, N.M. 87504.

Change of address: Notifications should be sent to New Mexico Architecture, Box 935, Santa Fe, N.M. 87504 (505) 983-6948 at least 45 days prior to effective date. Please send both old and new addresses.

Subscriptions: Write Circulation, New Mexico Architecture, Box 935, Santa Fe, N.M. 87504. Single Copy \$3.00. Yearly subscription \$15.00.

Advertising: Send requests for rates and information to Carleen Lazzell, Associate Editor/Advertising Director, 8515 Rio Grande Boulevard, N.W., Albuquerque, N.M. 87114, (505) 898-1391.

Bradley

GENERAL CONTRACTORS
THE FIRST NAME
IN NEW MEXICO CONSTRUCTION

STATEWIDE TOLL FREE NUMBER 1-800-432-5476
(505) 823-2800
8300 Washington NE • Albuquerque, NM 87113

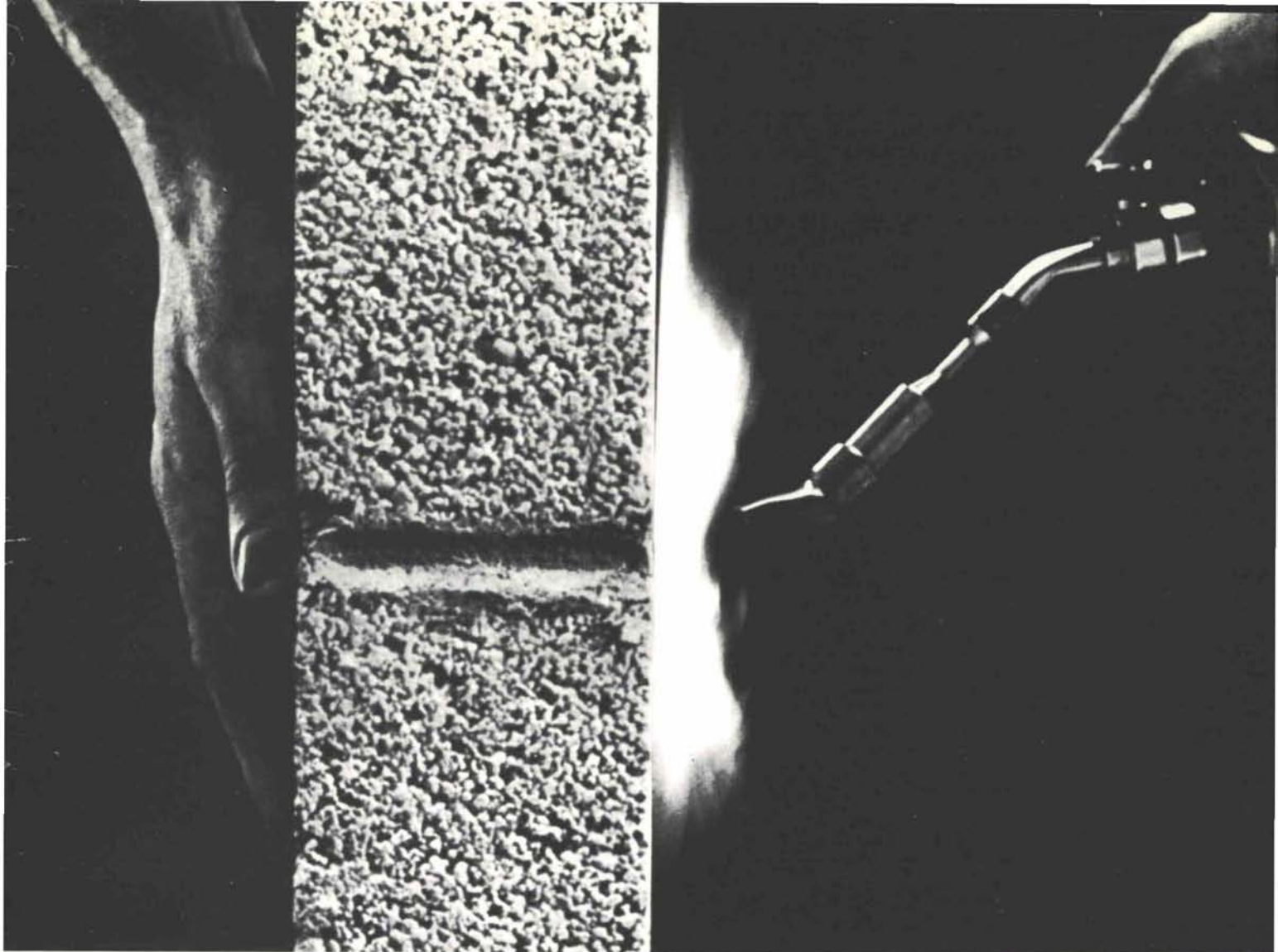
SPECIALIZING IN
Pre-engineered Buildings
Concrete Structures
Commercial and Office Buildings



INDEX OF FIRMS who make possible the publication of NMA and the page upon which their message can be found:

Alexander & Alexander	20
American Airlines	14
Bradley General Contractors	22
Brother Sun/US Sky	19
Crego Block Co.	23
Crego Block Co.	24
Davis & Associates Inc.	8
Ferreri Concrete Structures, Inc.	18
Herbert M. Denish & Associates, Inc.	2
Holman's	2
Hydro Conduit Corporation	8
Jaynes Corporation	19
Kitts Enterprises, Inc.	8
Kohler	4
Kohler/Active Supply Co. & PHC Supply Co.	5
Pella Rio Grande, Inc.	18
Plains Electric	18
Plant Designs	7
Rocky Mountain Stone Company, Inc.	20
Santa Fe Lights	18
Sherwin Williams	19
Tiles de Santa Fe	22
Western Building Supply Co., Inc.	20
W. H. Harlan & Associates, Inc.	22

Printed by Hall-Poorbaugh Press, Inc., Roswell, New Mexico



A FAST, ECONOMICAL WAY TO A TWO-HOUR FIRE RATING.

Fire barriers between multiple dwelling units needn't be assembled with cook-book type instructions, paper-mache elements and lots of luck. By using concrete masonry walls, you can get a two-hour fire rating in a wall as slim as 3½" — weighing as little as 28 pounds per square foot — with the added plus of high STC ratings for occupant acoustical privacy.

And the masonry installation is simple, just one concrete block laid in mortar in a running bond on top of another concrete block. The work is all done by the same craftsman for the height of the wall and it is

easily inspected for potential deficiencies. This same ease of inspection is not available with the multi-phase, layered, paper-mache type of fire wall. (An 8 foot high fire wall built of standard 8" ASTM C-90 concrete block with type-N mortar can carry a concentric load of 5,800 pounds per lineal foot. Most fire-rated drywall walls are non-loadbearing.)

Come to think about it... have you ever seen a masonry wall burn? That is something to think about, the next time you build a stairwell or elevator shaft.



CREGO BLOCK CO.

P.O. BOX 6466
ALBUQUERQUE, N.M. 87197

8026 SECOND STREET, N.W.
(505) 345-4451



Courtesy of
Masonry Advisory Council

New Mexico Architecture
8515 Rio Grande Blvd., N.W.
Albuquerque, NM 87114

ADDRESS CORRECTION REQUESTED



Bulk Rate
U.S. Postage
PAID
Roswell, N.M.
Permit No. 47

2681 056 03
FINE ARTS LIBRARY
UNIV OF NEW MEXICO
ALBUQUERQUE NM 87131

CREGO BLOCK CO.

6026 SECOND STREET, N.W.
P.O. BOX 6466
ALBUQUERQUE, N.M. 87197

(505) 345-4451
NM TOLL 1-800-634-1413
FAX NO. (505) 345-4459

The System To Unlock Your Creativity!

KEYSTONE™

RETAINING WALL SYSTEMS

7600 France Ave, South Minneapolis, MN 55435

CREATIVITY Variations in color, face pattern and angle, along with two module sizes, make the Keystone™ System a designer's dream.

DURABILITY The Keystone™ System features high-strength concrete modules and interlocking fiberglass pins. The non-corrosive, non-deteriorating materials provide a lifetime of performance.

QUALITY APPEARANCE The heavy textures and the deep shadows of the Keystone™ System create a pleasing appearance that blends and harmonizes with the buildings and landscaping.

EASE OF INSTALLATION The Keystone™ System can be installed in half the time as other walls with semi-skilled personnel. No footings are required.

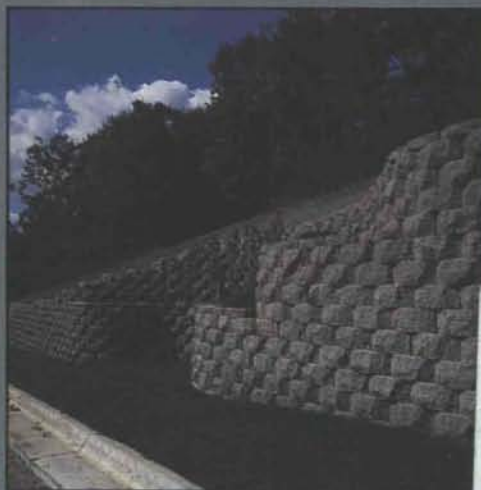
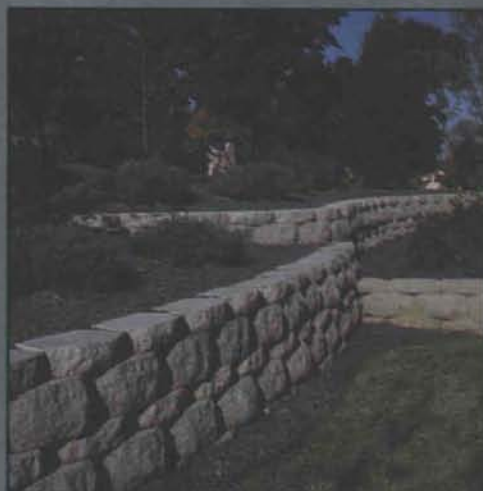
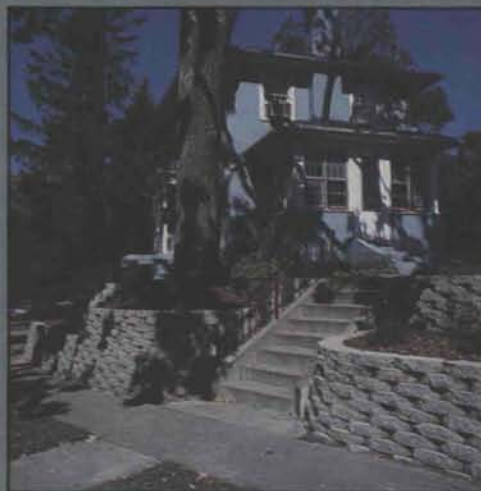
COST EFFECTIVE Mass production allows Keystone™ to pass its savings on to you. This combined with Durability and Ease of installation, is what makes the Keystone™ System Cost Effective.



8 INCH KEYSTONE UNIT
1'-6" x 8" x 2'-0"



4 INCH KEYSTONE UNIT
1'-6" x 4" x 1'-0"



New Mexico architecture
LIBRARIES - UNIVERSITY OF
NEW MEXICO
Received on: 11-14-90

