

Denver Permit Center
Denver, Colorado

**C.W. Fentress
J.H. Bradburn and
Associates, P.C. Architect**
Denver, Colorado

Jury Comments

The jury was impressed by the articulate handling of this urban site to improve upon the urban fabric through use of compatible materials and the creation of a through block connection. This successful renovation incorporates municipal offices in the spirit of civic-minded architecture. The rehabilitated facade possesses a contextual civic character.

A splendid example of urban renewal.

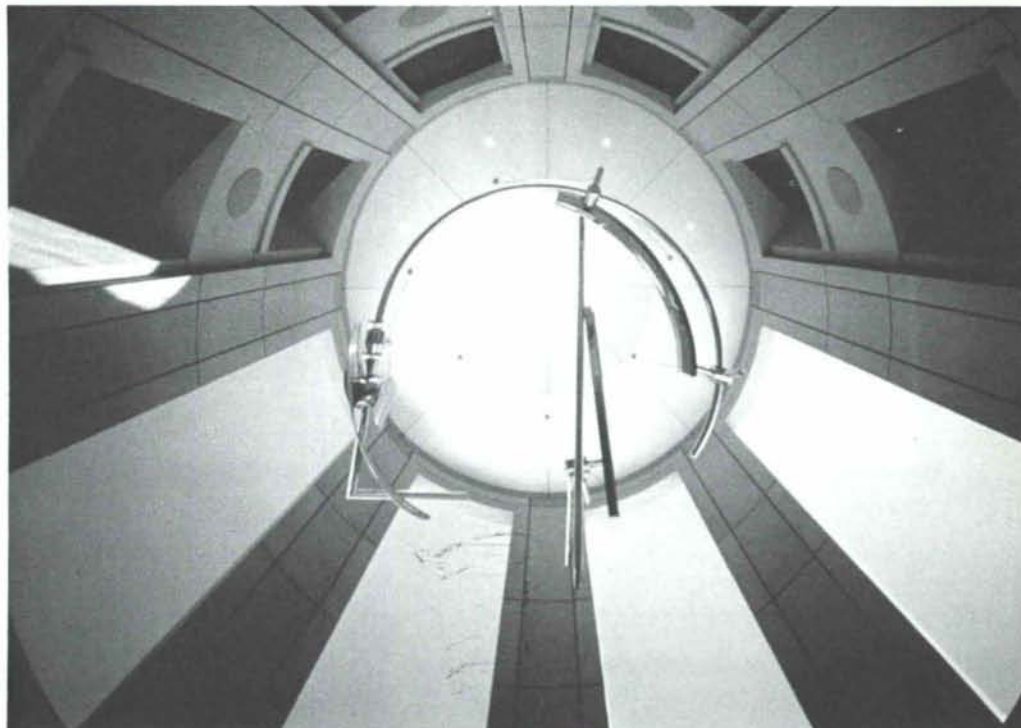
Project Data

Client

City and County of Denver

Construction Manager

Turner Construction Company



Lambing Shed
Paragonah, Utah

**The Gardner Partnership,
Architects**
Cedar City, Utah

Jury Comments

This is an exquisite example of mundane simplicity, care, and thoughtfulness.

Agricultural architecture in the best Palladian sense.

The jury trusts that the lambs enjoy the architecture as much as we did.

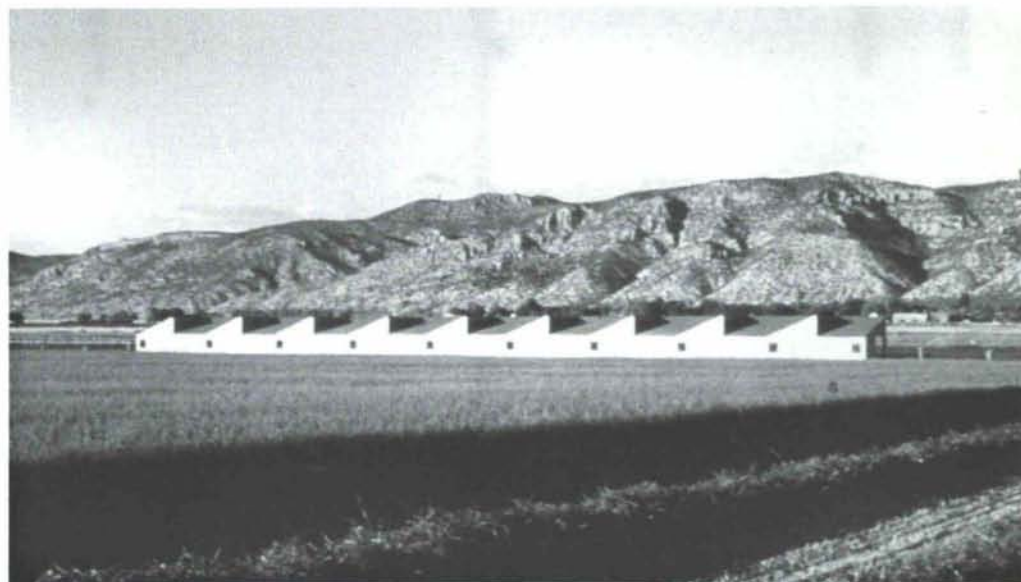
Project Data

Client

Gardner Livestock

Builder

Val Barton and Paul Schmitt



AWARD FOR EXCELLENCE
IN ARCHITECTURE

COLORANSWERS™

Today's Answers to Tomorrow's Color Questions

- ♦ The industry's most complete color specifying system
- ♦ Features large color samples organized in a compact, easy to use kit
- ♦ Over 1,200 interior and exterior colors
- ♦ Quality Products for over 120 years

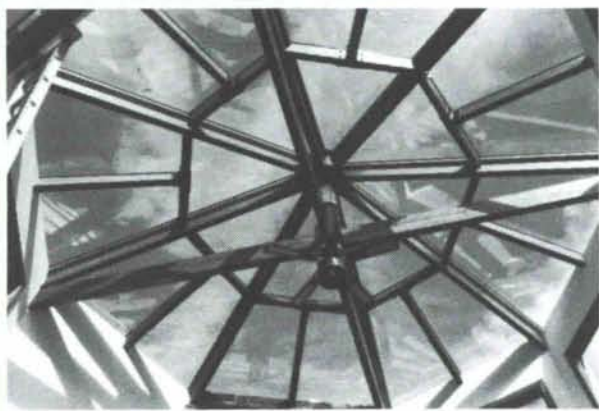


Call our 800 number for:

- ♦ Assistance with spec writing
- ♦ Personal answers
- ♦ Call 800-321-8194
800-362-0903 (In Ohio)



Ask Sherwin Williams
— Architects Do



*If you can think it...
we can glaze it.*

New Mexico's specialty glazing experts.

- SureSeal™ skin glazing can do any geometric shape, slopes or vertical
- You determine the glazing you want
Low-E, Heat Mirror, solar tints
- Components only or installed

Brother Sun / US Sky

2907 Agua Fria, Santa Fe, NM 87501

1-800-323-5017 • FAX 505-471-5437

505-471-5157

Call or Fax us for quotes, bids, and design assistance

BREAKING NEW GROUND.

At Jaynes our goal is to meet *your* goals, on *your* timeline, without compromising quality. If along the way we also happen to exceed your expectations, it won't be the first time.

Your Single Source Builder
Albuquerque 345-8591
Farmington 326-3354
License No. 4866



Insurance for the Design Professional
New Mexico's
Professional Engineers
and Architects

**Alexander
& Alexander**

**BONDING &
INSURANCE**

Since 1925

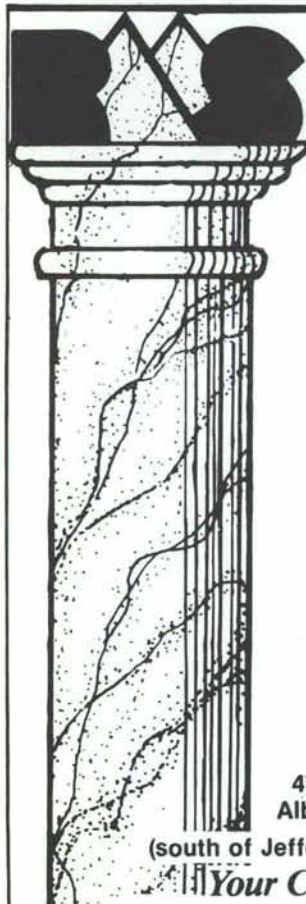
Call Bob Dean, Professional Liability Specialist

TELEPHONE (505) 883-8282

N.M. WATS 1-800-432-5882

Suite 200
6000 Uptown Blvd. NE

P.O. Box A
Albuquerque, N.M. 87103



- **MARBLE**
- **GRANITE**
- **TRAVERTINE**
- **SLATE**
- **LIMESTONE**
- **SANDSTONE**
- **CANTERA**

— — — FOR — — —

- Kitchen counters
- Vanity tops
- Fireplace surrounds
- Flooring
- Interior/Exterior cladding
- Installation/Restoration
- Architectural Assistance
for ANY type of Natural
Stone

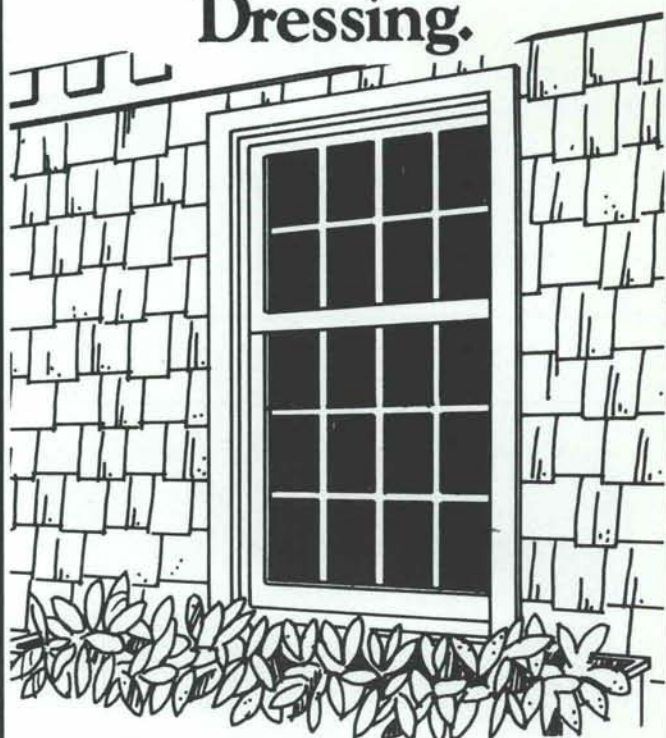
505-345-8518

**ROCKY MOUNTAIN
STONE COMPANY INC.**
4741 Pan American Frwy. N.E.
Albuquerque, New Mexico 87109

(south of Jefferson on West Frontage Road)

Your Custom Marble Source

True Window Dressing.



Williamsburg true divided lites by Weather Shield add classic style to your home.

It's amazing how this historic window treatment has made it onto the threshold of the 21st century.

Born out of the need for small window panes years and years ago, the style is still preferred by discriminating homeowners today.

Perfect by Weather Shield for today's energy needs, these individual insulated glass lites offer classic beauty with tomorrow's technology.

All-wood interiors, ready for staining or painting, are available with natural, primed or white/adobe/desert tan Poly I or aluminum clad low-maintenance exterior finish options.

Select your window or door style and choose Weather Shield true divided lites. Then see and buy them here...



Western Building Supply Co., Inc.

4201 Paseo del Norte, NE

Albuquerque, New Mexico 87113

(505) 823-2500