

**RNL Design/Anderson  
Mason Dale, P.C. Architects  
Denver, Colorado**

**Jury Comments**

Detention facilities normally evoke images of hostility and are not conducive environments for preparing inmates for their return to society. This project, to the contrary, establishes and characterizes a more positive meaning and attitude.

If architecture affects lifestyle, as we hope it does, this will be a most successful project.

Stylistically and successfully Bottasque...

**Project Data**

**Client**

Colorado Division of Youth Services  
Architects

Steve Newman, Ron Mason

**General Contractor**

Maranatha Construction-  
Englewood, Colorado

**Structural Engineer**

Martin/Martin, Inc.

**Electrical Engineer**

Gordon, Gumeson and Associates, Inc.

**Mechanical Engineer**

McFall-Konkel & Kimball,  
Consulting Engineers

**Photographer**

R. Greg Hursley, Inc.

**MHT Architects Inc. and  
Lord & Sargent, Inc.  
Salt Lake City, Utah**

**Jury Comments**

This project represented to the jury a most successfully simple volumetric and sculptural play of masses enlivened by the subtly striped masonry.

For its size, it is a most friendly structure in the landscape, creating an unanticipated addition to the environment given the program use.

The fire stairs serve to introduce a diagonal in the otherwise horizontal and cubic composition.

**Project Data**

**Client**

Delta Air Lines, Inc.  
Atlanta, Georgia

**General Contractor**

Okland Construction Company,  
Salt Lake City, Utah

**Structural Engineer**

Reaveley Engineers and Associates

**Mechanical Engineers**

Olsen & Peterson

**Electrical Engineers**

Becherer Nielson Associates

**Mechanical/Electrical Engineers**

R.L. Daniell & Associates

**Acoustics**

Acoustical Engineers Inc.

**Landscape Architects**

Del R. Cook & Associates

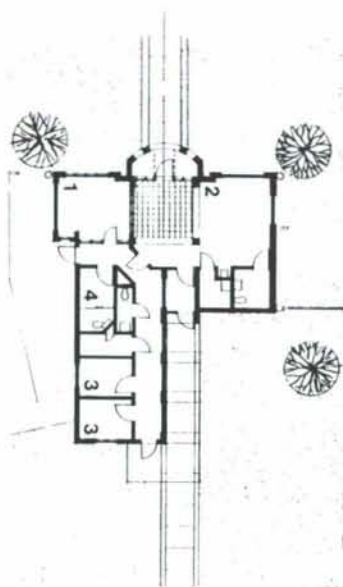
**General Contractor**

Okland Construction Company  
Salt Lake City, Utah

**Photographer**

Jonathan Hillyer Photography, Inc.

**Lookout Mountain School  
Golden, Colorado**

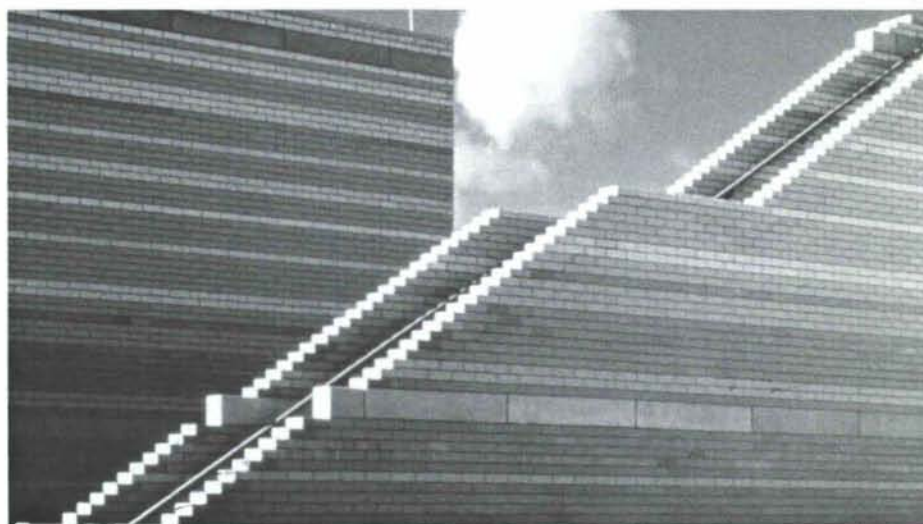


**INTAKE KEY**

1. Control Room
2. Waiting Room
3. Interview
4. Search



**Delta Air Lines Reservations and Training Center  
Salt Lake City International Airport**



**AWARD FOR EXCELLENCE  
IN ARCHITECTURE**