

New Mexico

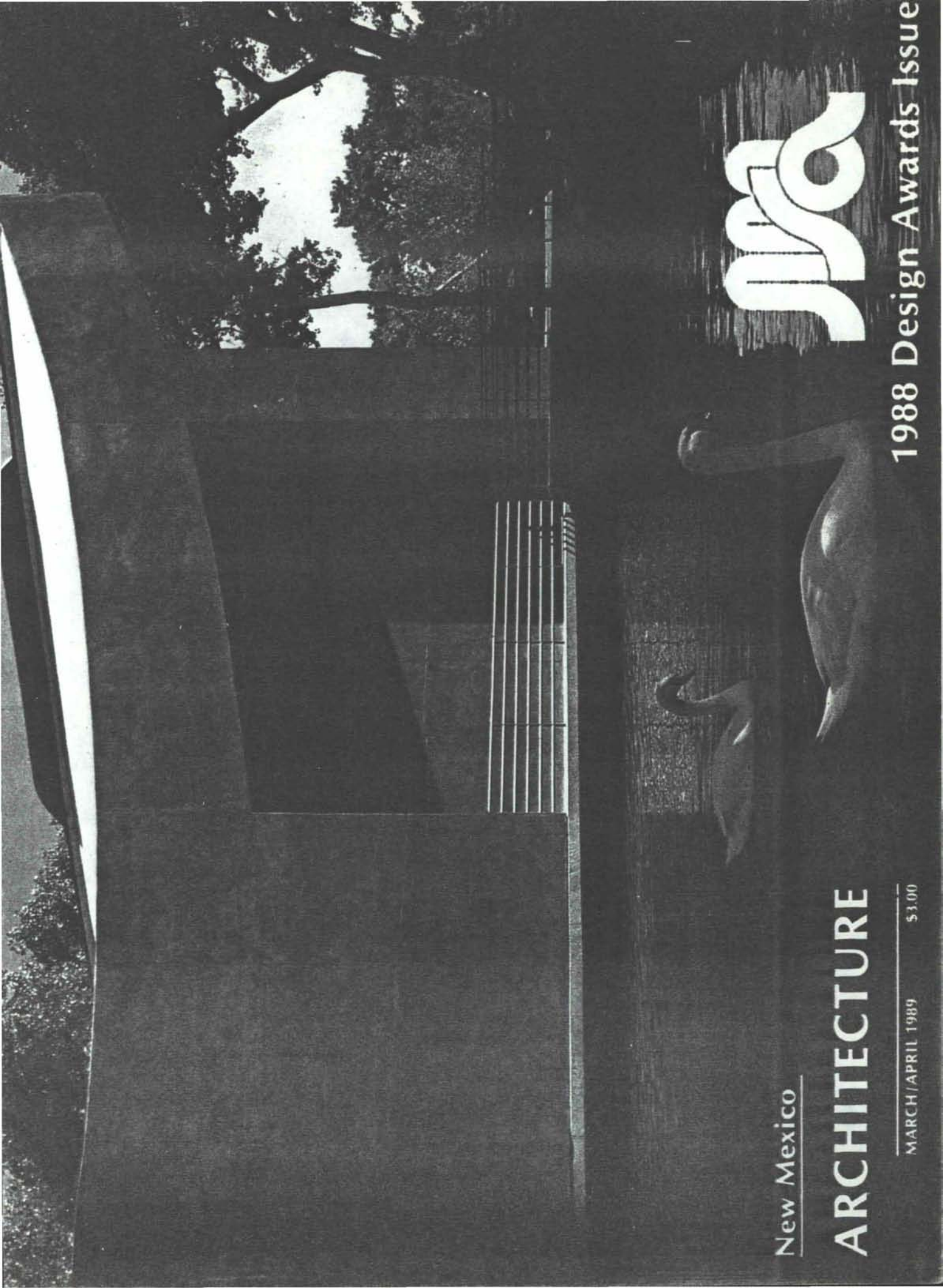
# ARCHITECTURE

MARCH/APRIL 1989

\$3.00



1988 Design Awards Issue







# nma

• vol. 30 no. 2 • march-april 1989 • new mexico architecture

In this issue are the winners of the 1988 New Mexico Society of Architects (NMSA) annual design awards. The awards were presented at the Santa Fe Design Conference held last fall.

□ □ □ □

It is gratifying for me to be able to report that the 1989 New Mexico Legislature passed an Interior Designers Registration Act. It was signed into law by Governor Garry Carruthers on March 15th.

It appears that negotiations between the American Institute of Architects and the American Society of Interior Designers, over the past year, resulted in the reversal of AIA's stand in opposition to Interior Designers becoming registered under a simple "title act". Without trying to open old wounds, or to ruffle feathers, the reader may remember that I not only supported such a registration act in the 1987 legislature, but spoke before several legislative committees in the House and Senate on behalf of the legislation; it died in the final minutes of that session. (See editorial, *NMA* March/April, 1987).

I wish to express my congratulations to those members of ASID who helped to lobby by the 1989 act to a successful conclusion.

□ □ □ □

Ruleen Lazzell, daughter of our Associate Editor/Advertising Director, Carleen Lazzell, is one of 18 recipients, out of a roster of 62 finalists, of a Fulbright Scholarship to travel to the Netherlands this summer. The purpose of the trip is to participate in a seminar entitled: "History, Culture and Society of the Netherlands". Ruleen is a lecturer in history at El Paso Community College and teaches history at Canutillo High School in Canutillo, Texas. Congratulations, Ruleen. I know that you will enjoy the Netherlands and will both contribute to and benefit from the seminar.

□ □ □ □

The cover of this issue of *NMA* is sponsored by Van Gilbert, AIA, architect for the Rio Grande Zoological Park Bandshell and Lake. (See page 9). Thank you from this editor, the "staff" and the magazine committee.

JPC

|  |    |
|--|----|
| The Editor's Column  | 3  |
| 1988 Design Awards   | 7  |
| Rio Grande Zoological Park Bandshell and Lake<br>by Van H. Gilbert, A.I.A. | 9  |
| Suarez Residence<br>Holmes, Sabatini, Eeds Architects                      | 10 |
| American Toyota<br>Patrick McClemon, A.I.A.<br>William Osofsky, A.I.A.     | 11 |
| Friedman Residence<br>Westwork Architects, P.A.                            | 12 |
| Nelson Residence<br>Westwork Architects, P.A.                              | 13 |
| Book Review<br>Portals at the Pass:<br>El Paso Area Architecture to 1930   | 15 |
| Professional Directory   | 17 |
| Advertiser's Index   | 18 |

(Cover—Rio Grande Zoological Park Bandshell and Lake—  
Van Gilbert, Architect—©Robert Reck, Photographer)

—Official Publication of the New Mexico Society of Architects, A.I.A.—

#### Society Officers

President—Wayne Lloyd  
President-Elect—Bill Freimuth  
Secretary—Tomás Méndez  
Treasurer—Michael Beltran  
Director—John Alejandro  
Director—Joe Browning  
Director—David Carr  
Director—Tim Christensen  
Director—Christopher W. Larsen  
Director—Richard R. (Toby) Pugh  
Director—Carlyn Rodahl  
Director—Gregory Wilcox  
Associate Director—Roger Easley  
Executive Director—Sema Wynne

#### New Mexico Architecture - Committee

John P. Conron, FAIA/FASID—Editor  
Carleen Lazzell—Associate Editor/Advertising Director  
Christopher Larsen, AIA—Chairman  
Van Dorn Hooker, FAIA—Past Chairman  
George Anselevicius, FAIA  
Terrance J. Brown, AIA  
Marjorie Hooker, AIA  
Carolyn Kinsman, Designer  
Charles E. Nolan, Jr., AIA  
George C. Pearl, FAIA  
Glade F. Sperry, Jr., AIA  
V.B. Price—Architecture Editor, "Artspace"  
Don P. Schlegel, FAIA  
Christopher Wilson, Architectural Historian

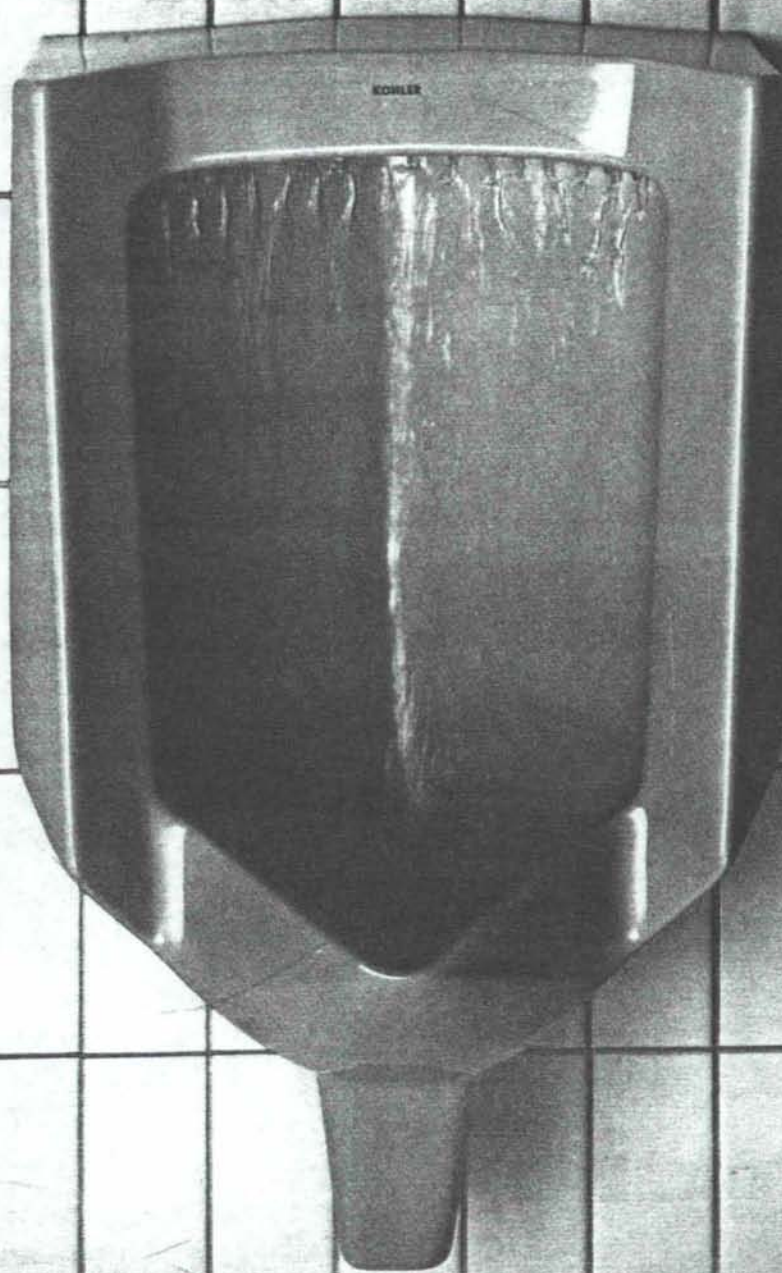
International Standard Serial Number—0545-3151



# Commercial Properties

*Bardon™ Water-Guard® Urinal.* Kohler products have many properties that make them the intelligent choice for commercial applications. Like the Bardon Water-Guard Urinal. We design smart from the start. For example, its patented anti-splash "V" design for better hygiene and reduced area maintenance, and the savings of a one gallon flush. Plus, Kohler's sales organization and extensive distributor network offer specification assistance and product support. For all the properties you want in a commercial product, depend on Kohler.

THE BOLD LOOK  
OF **KOHLER.**





# THE BOLD LOOK OF KOHLER

Showroom Hours M-F 8:00-5:00  
SAT 8:00-12:00

## • PHC

SUPPLY COMPANY

1000 Siler Park Road

Santa Fe, NM • Phone 471-1811

## • ACTIVE

SUPPLY COMPANY

1500 Candelaria NE • Albuquerque, NM • Phone 345-8587

541 Laser Road NE • Rio Rancho, NM • Phone 892-4401



DIVISIONS OF DAHL U.S. HOLDINGS, INC.

## THE MAYHEW COMPANY

ENGINEERED BUILDING SPECIALTIES  
"SINCE 1953"

SALES - INSTALLATION - DESIGN ASSISTANCE

|                           |                     |
|---------------------------|---------------------|
| CRANES, MONORAILS, HOISTS | TOILET PARTITIONING |
| BATHROOM ACCESSORIES      | FLAGPOLES & FLAGS   |
| CHALK & TACK BOARDS       | ACCORDIAN DOORS     |
| OPERABLE WALLS            | SIGNAGE             |
| LOCKERS                   |                     |

(505) 247-4131

367 ARVADA, NE  
ALBUQUERQUE, NEW MEXICO 87102

Insurance for the Design Professional  
New Mexico's  
Professional Engineers  
and Architects

# Alexander & Alexander

**BONDING &  
INSURANCE**

Since 1925

Call Bob Dean, Professional Liability Specialist

TELEPHONE (505) 883-8282  
N.M. WATS 1-800-432-5882

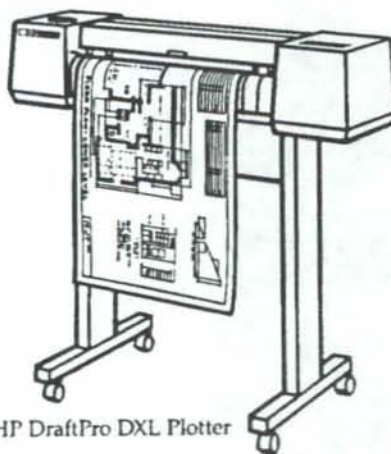
Suite 200  
6000 Uptown Blvd. NE

P.O. Box A  
Albuquerque, N.M. 87103

## At Prices Like These, Our Plotters Are Guaranteed To Be A Great Draw.

The new DraftPro  
DXL plotter from  
Hewlett-Packard.

- Uncompromising HP quality and reliability.
- One year on-site warranty, low service contract cost.
- Excellent line quality (ask for free sample).
- 1-2 MB optional buffer cartridge.
- Paper, vellum, and polyester film, sizes A-D.



HP DraftPro DXL Plotter

# HOLMAN'S<sup>TM</sup>

Quality products for the world of Science, Engineering & Business  
401 WYOMING NE • 265-7981  
VISA • MASTER CARD • AMERICAN EXPRESS





## 1988 Design Awards

### New Mexico Society of Architects

The N.M.S.A. Design Awards program seeks to recognize outstanding projects by New Mexico Architects and Landscape Architects, and to promote public interest in design excellence. New and adaptive reuse projects completed within the past five years, designed by members of the New Mexico Society of Architects and the New Mexico Society of Landscape Architects, are eligible for consideration.

This past October, a three member panel of jurists from Pennsylvania, all members of the National Committee on Design/Awards Task Group and distinguished designers in their own right, selected five projects to receive awards from thirty-five entries. The jurists included Laurie Olin, ASLA, environmental designer, author and lecturer; Peter Bohlin, FAIA, architect, critic and historian; and Charles Dagit, FAIA, architect, professor and committee chairman. Alan Taylor, President-elect of the Albuquerque Chapter/AIA, coordinated the 1988 Design Awards program and served as liaison to the jury.

The five award-winning projects illustrated on the following pages display the skillful artistry and intelligence that create outstanding design solutions. Yet these are only a handful of projects from many excellent public, commercial and residential works created by area design professionals in recent years.

In reflecting upon the projects which were selected for these awards, Taylor acknowledges that quality of presentation and photography is an important factor in the selection process. After all, the jury couldn't visit the projects first-hand. S. Y.



*The distinguished jury, members of the Awards Task Group, of the American Institute of Architects/National Committee on Design, are all from Pennsylvania. From left to right: Laurie Olin, ASLA; Peter Bohlin, FAIA; Charles Dagit, Jr., FAIA. (For a brief resume of each juror see pages 18 and 19, New Mexico Architecture, September/October, 1988.)*

*The awards displayed on the following pages are:*

Rio Grande Zoological Park Bandshell and Lake  
Van H. Gilbert, AIA, Architect

Suarez Residence  
Holmes, Sabatini, Eeds, Architects, members AIA

American Toyota  
Patrick McClernon, AIA, and William Osofsky, AIA, Architects

Friedman Residence  
Westwork Architects, PA

Nelson Residence  
Westwork Architects, PA

The awards winning buildings begin on page 9





## The Design Staff At Commercial Kitchen Equipment Will Design And Equip Your Kitchen

Individualized Service Is Our Specialty And We Provide The Most Comprehensive Package Available. We Have Successfully Designed And Equipped Many Of The Areas Premier Facilities:

- United States Air Force Academy
- Ciaol Ristorante e Bar
- Sunset Grille
- Albuquerque Petroleum Club
- Restaurant André
- Catalina Cafe

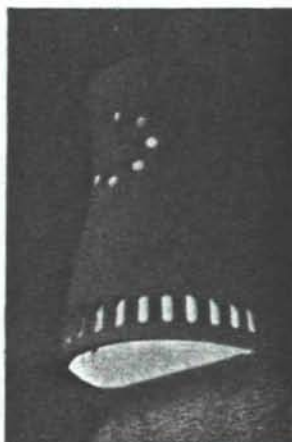
If You're Planning Or Remodeling A Commercial Kitchen, We Specialize In ...

- Restaurants • Hotels • Motels
- Bars and Lounges • Fast Food
- Franchises • Resort and Recreational Facilities • Conferences and Convention Center • Health Care
- Dietary Institutional Food Service
- Employee Dining Facilities

**Call Rick Gonzales Today!**  
**883-1984**

*"Your Work Never Ends Up  
On Our Back Burner"*

**COMMERCIAL KITCHEN EQUIPMENT**  
P.O. Box 35927 Albuquerque, NM 87176



## SANTA FE LIGHTS

Southwestern Style  
Handcrafted Stoneware  
Architectural Lighting Fixtures  
INDOOR & OUTDOOR  
WALL, CEILING, AND  
HANGING LIGHTS.  
CHANDELIERS &  
GARDEN LIGHTS

Studio: Rt. 10 Box 88-Y  
Dept. B Showroom: The Santa Fe Pottery  
323 Guadalupe St.

Santa Fe, New Mexico 87501  
505-471-0076

## FOR HARD WORK- LONG HOURS

Furnishings For:

- Schools
- Cafeterias
- Libraries
- Laboratory Casework
- Auditoriums
- Stadiums

**SEI School  
Equipment  
Inc.**

3225 Candelaria NE  
Albuquerque, NM 87107

**505-888-5959**

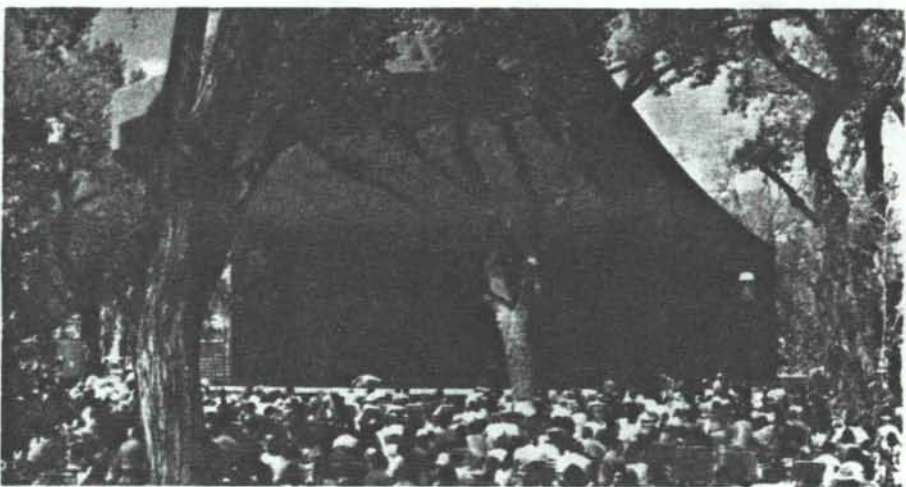


**Award of Excellence**  
**Van H. Gilbert, A.I.A.**  
**Architect**

**Rio Grande Zoological Park Bandshell and Lake**  
**Albuquerque**  
**New Mexico**

**Jury Notes**

"This project is, at first glance, a straight forward solution to the festive bandshell in a park. On second look the sophistication of its siting and its evocative zoomorphic quality is a witty and appealing structure. The handling of the exterior and interior in combination with the water, particularly for the water's reflective quality on the acoustic material is special. The frugality of the few lines in a 30s art deco-like style is restrained yet expertly treated."



The site, at the edge of a grove of cottonwood trees 50 to 60 feet tall, also had a low-lying area perfect for a man-made lake. This spectacular setting for the Bandshell also afforded views of the distant mountains.

The viewing experience of the Bandshell varies as one follows the path from east to west. The trees serve as a curtain, exposing the Bandshell and lake to the viewer in ever-differing patterns as the leaves and branches diffuse the New Mexico sunlight. It is as though one were slowly unwrapping a package and experiencing the excitement of what is inside in tantalizing bits and pieces.

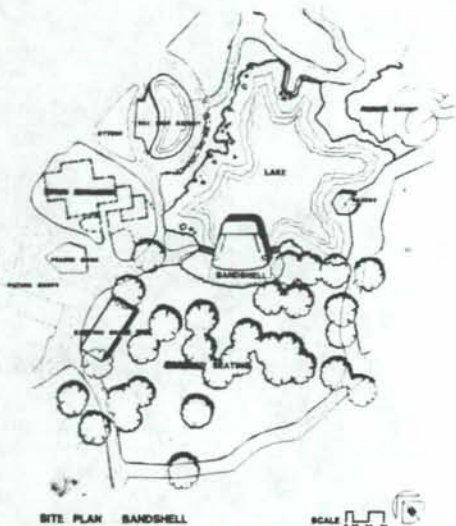
The Bandshell hovers over a man-made lake which is integrated into the Zoological Park and serves as a waterfowl exhibit. The lake, reflecting off the Bandshell acoustical overhang, presents ever changing, intricate patterns for the viewer to enjoy. Besides enhancing the music, the lake lends a sense of escape to the total Zoo experience.

The shell is dramatic and flowing in its design, offering a sense of solitude and drama even when there is no performance. During the performance, however, the intricate acoustical system and complete stage provide exceptional opportunity for the actor or musician.

The Bandshell hosts the New Mexico Symphony Orchestra and Chorus, but can also be used for plays, opera, a small chamber music ensemble, jazz ensembles, or a puppeteer. Seemingly floating on the lake, the water enhances not only the music, but attracts waterfowl that swim around the stage or watch the performance from a nearby cottonwood tree.

The stage is already being used for a variety of events, educational demonstrations, and entertainment. The Bandshell can even be rented for a private party! Behind the stage are small dressing rooms, bathrooms, offices and storage.

This spectacular new performance center with its sweeping roof, simple lines, and waterfowl in flight brings a kind of oriental serenity to this dynamic Zoo.



**Rio Grande Zoological Park**  
**Bandshell and Lake**  
**Albuquerque, New Mexico**

**Owner:**  
 City of Albuquerque  
 Mr. John Moore, Director  
 Mr. Ray Darnell, Assistant Director

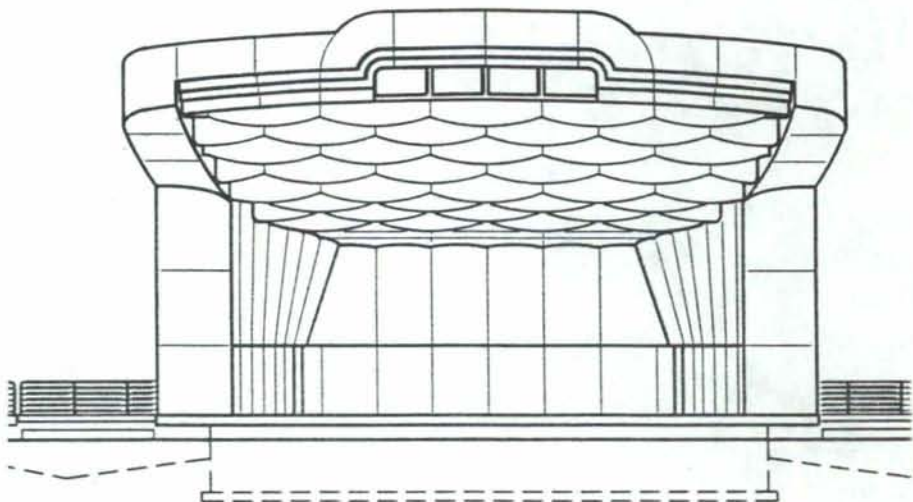
**Architect:**  
 Van H. Gilbert, A.I.A., Architect

**Design Team:**  
 Van H. Gilbert, A.I.A.  
 Ronald E. Shafer, A.I.A.  
 James Graf, A.I.A.

**Acoustical Engineer:**  
 Purcell + Noppe + Assoc., Inc.

**General Contractor:**  
 Britton and Rich, Contractors

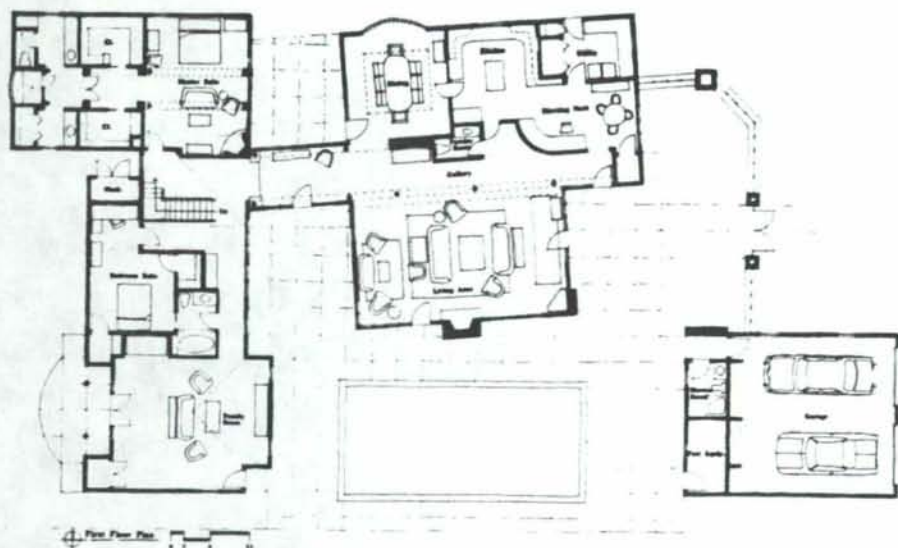
**Photography:**  
 © Robert Reck





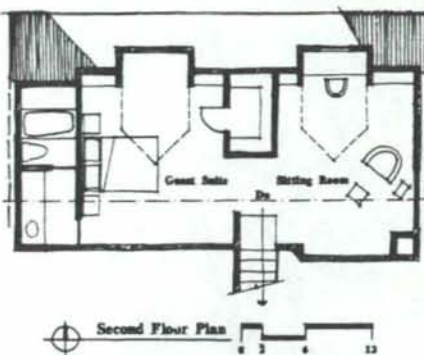
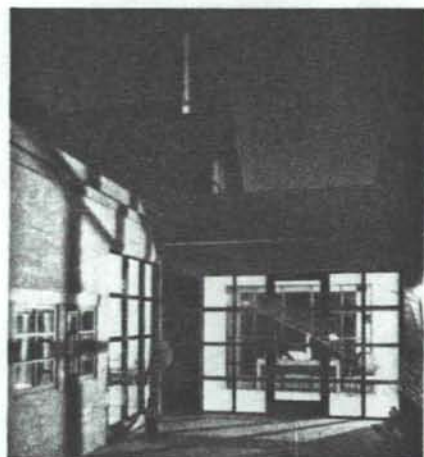
**Suarez Residence**  
Albuquerque  
New Mexico

**Award of Excellence**  
Holmes, Sabatini, Eeds  
Architects



**Jury Notes**

"This residence in contrast to many seen in the southwest, is consciously working in the Anglo Vernacular, no less valid than the Spanish or the Pueblo vocabulary. The tin roofs, with gable ends pulled apart by breezeways holds together while at the same time responding to climatic conditions. The building does not try too hard and is detailed consistently creating real space from modest technics; a sensitive understatement."



**Suarez Residence**  
Albuquerque, New Mexico

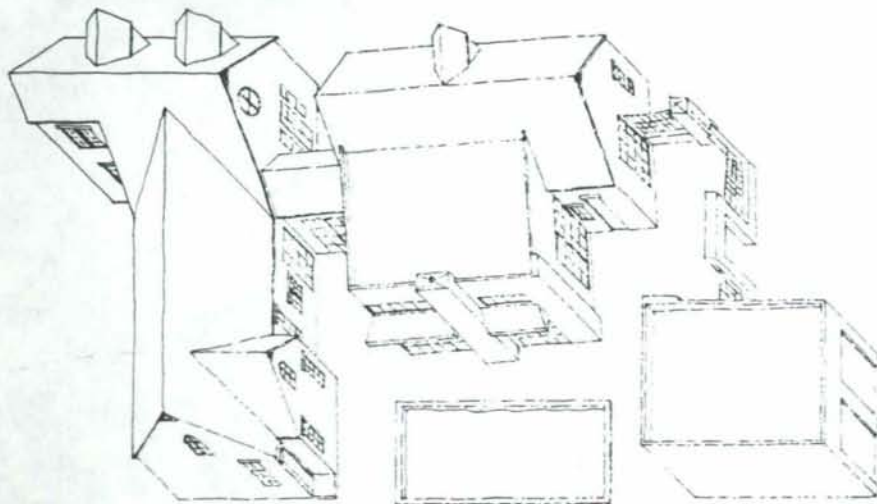
Owner/Client:  
Omiero and Debbie Suarez  
Architect:  
Holmes, Sabatini, Eeds, Architects  
Design Team:  
William Q. Sabatini  
Mark Levine  
Sandy Eeds  
Interior Design:  
Carson See  
Oklahoma City  
General Contractor:  
Wescon, Inc.  
Photographer:  
©Kirk Gittings/Syntax

A flat, half acre rural site in the north river valley area of Albuquerque known locally as the "bosque". As is typical of the "bosque", natural vegetation is abundant and includes indigenous plant materials such as cottonwood, mesquite, Navajo willow and a wide variety of native grasses. This area of Albuquerque was the first to be settled by the Spaniards in the 16th Century and the prevalent architectural theme is typically that of the massive adobe wall, topped either with steep sloping roofs or flat roofs covered with sod.

A 4,500 square foot residence for a married couple with one child. In addition to the need for the typical residential functions, the owner had a great need and desire to have the enclosed spaces also function as gallery and museum space. Their lifestyle includes a love of Victorian furniture, art deco and art nouveau, and therefore have amassed a great collection of furnishing and artwork of these styles. The resultant challenge to the architect was to create a background of materials and forms in such a way as to blend the artwork with the traditional architecture of the southwest, and to accomplish this within the context of a residence.

Employing the simple massing and roof forms of early New Mexico architecture, three basic structures are organized as a "compound" around a south facing courtyard. The plan of the compound allows for the segregation of "public" and "private" spaces by buffering those areas with zones of dining and kitchen areas. The design of each interior space is independent of each other in order to provide for the incongruity of art forms, similar to that of museum gallery design.

The exterior image, consisting of massed stucco walls, galvanized steel pitched roofs and dormers and traditional window forms, provides for a consistency of context within the bosque areas and leads to an element of surprise upon entry into the interior.



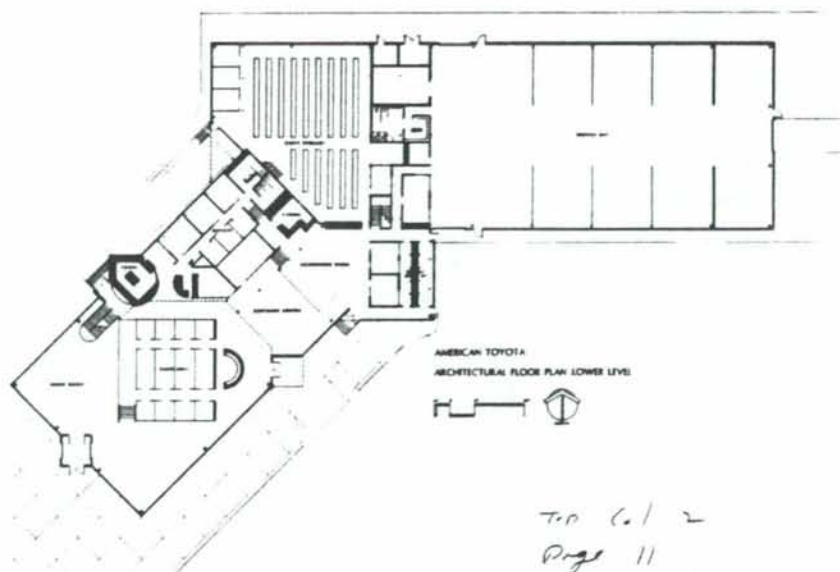
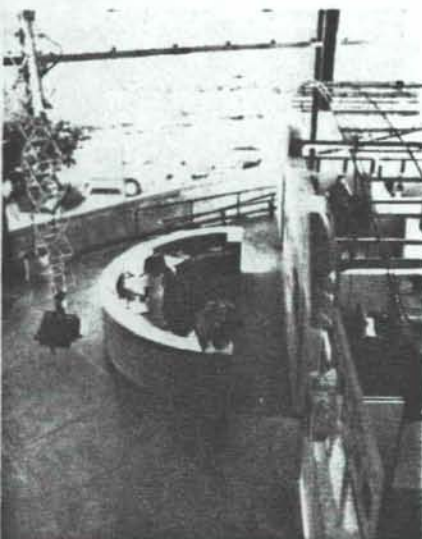


**Award of Excellence**  
**Patrick McClermon, A.I.A.**  
**William Osofsky, A.I.A.**

**American Toyota**  
**Albuquerque**  
**New Mexico**

## Jury Notes

"This two-part building of modest program related to the everyday in its unpretentious way gives dignity to its use. The industrial urbane quality of the interior is visually rich and yet does not seem to compete with the cars. A few excellent architectural moves gives drama to the setting."



The clients wishes were to create a "stage" setting with a theatrical analogy to display the polished sophisticated technology of the automobile. In addition, the building should have a variety of light, spaces, scale and views.

The two part program divided between "sales" and "service" reflects this dual nature by choice of materials. The glass showroom and outdoor sales are the dominant element, set at an angle on the site so as to be visible to freeway travelers from both directions. Behind the showroom and central support facilities, the parts department and service shop are housed in a massive concrete shell, creating the primary contrast between glass box and concrete mass.

Simplicity and contrasts were used throughout to heighten the awareness of elements such as entry/exit ways. Unadorned concrete both shelters and marks the entrance as it projects from the glass facade. Similar contrasting elements are delineated in the floor finish of integrally colored concrete by the addition of stainless steel strips reinforcing the grid pattern of the glass facade and the precast panels.

## American Toyota Albuquerque, New Mexico

### Client:

Ms. Beatriz Rivera

### New Owner:

Mr. Larry H. Miller

### Architects:

Patrick McClermon, A.I.A.

William Osofsky, A.I.A.

### Architectural Firm:

Patrick McClermon Architects/Planners,  
 P.A.

### Interior Architecture:

William Osofsky, A.I.A.

Patrick McClermon, A.I.A.

Charlotte Bates and Goodmans  
 Furniture and Office Systems

### Structural Engineers:

Randy Holt & Associates, Inc.

### Mechanical & Electrical Engineers:

Coupland/Moran Associates, Inc.

### Civil Engineers:

Espey-Houston & Associates

### Landscape Architect (Design/Construct):

Heads Up.

### General Contractor:

Summit Construction Inc.

### Photography:

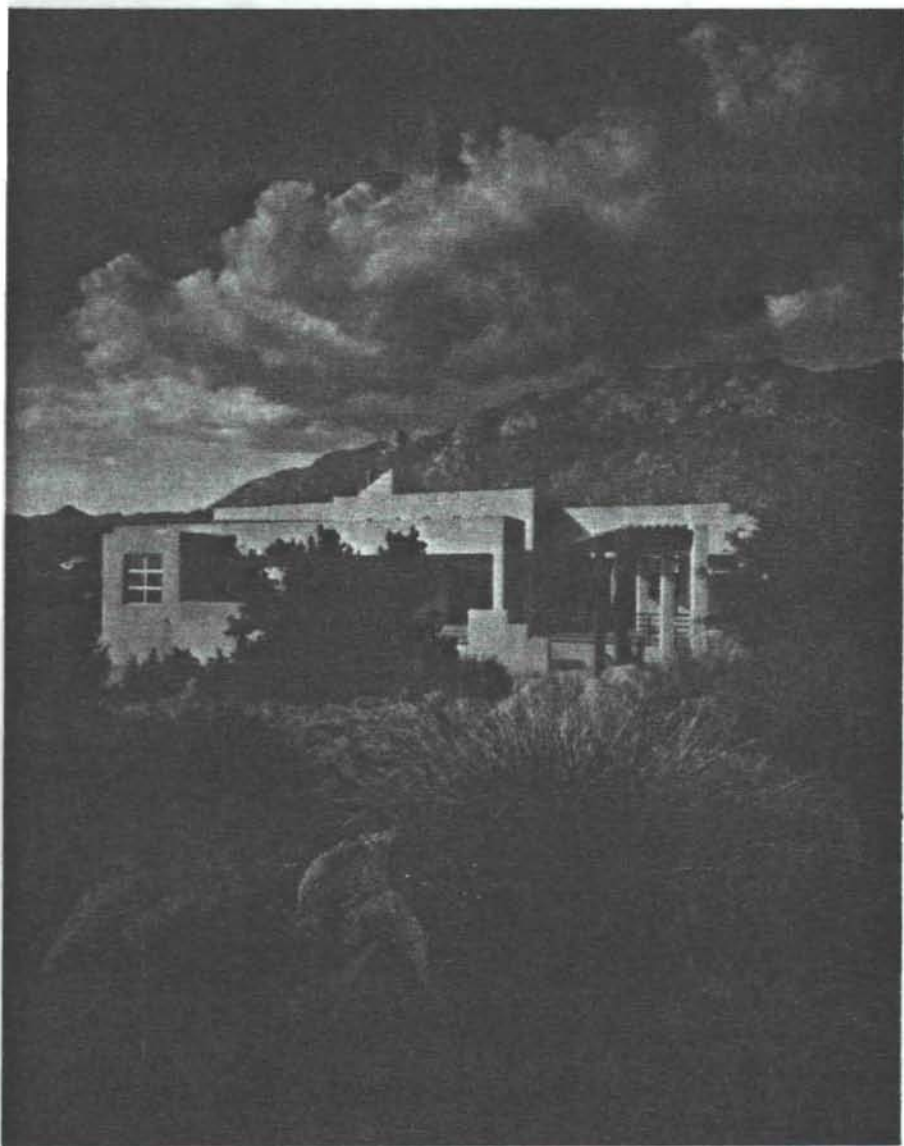
Bob Brazell Photography





**Friedman Residence**  
Albuquerque  
New Mexico

**Award of Excellence**  
Westwork Architects. P.A.  
Architects



**Jury Notes**

"This house uses bold traditional southwestern forms and sits dramatically in the landscape with conviction. It represents the best of the tradition of this kind of architecture. Its layered front helps orient the house away from the sun and allows for the interior to take advantage of the landscape."



**Friedman Residence**  
Albuquerque, New Mexico

Owner/Client:  
Dr. Herb and Miriam Friedman

Architect:  
Westwork Architects, P.A.

Project Team:  
Glade Sperry, Jr., A.I.A.  
Cindy A. Terry, A.I.A.

Mechanical Engineer:  
Walker Engineering

Electrical Engineer:  
Telcon Engineering, Inc.

Structural Engineer:  
Chavez-Grievs Consulting Engineers, Inc.

General Contractor:  
Lewton Construction

Photography:  
© Kirk Gittings/Syntax

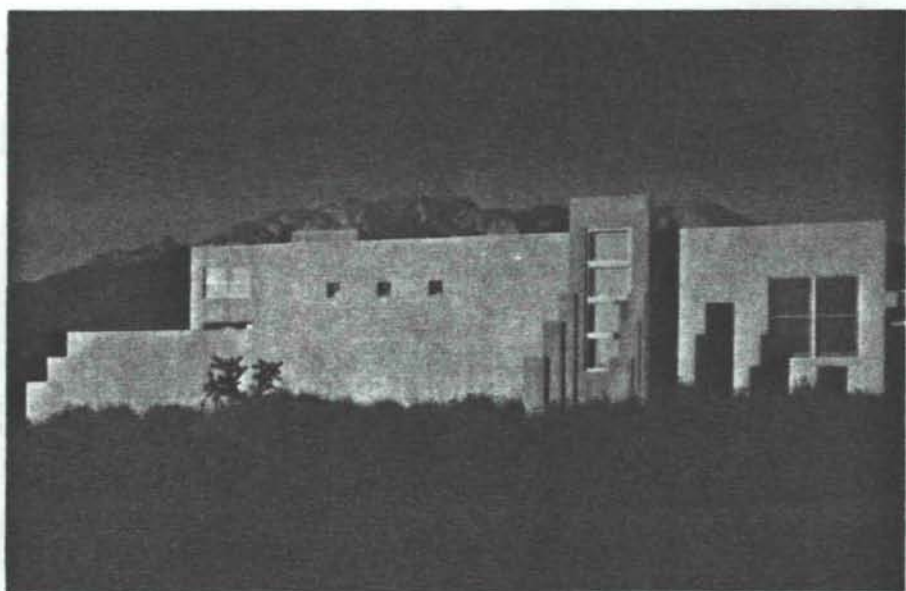
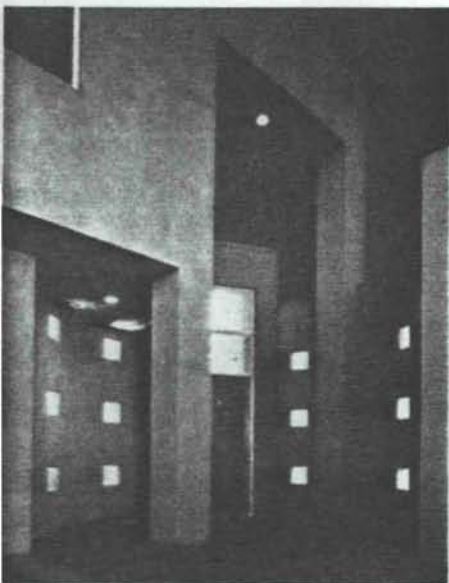
As a metaphorical ship in the desert, the Friedman residence comes to rest between two rugged granite outcroppings in the foothills of the Sandia Mountains above Albuquerque. The power of this landscape is overwhelming and the air of mystery in this place is charged by the presence of megalithic granite boulders that dominate and shape much of the terrain. The ritual need to touch this landscape and bridge to it is acknowledged in the entry ramada that fingers out into the site. The tracery of the entry element is in counterpoint to the simple massive forms of the dwelling.

At evening, the home glows like a lantern in its desert setting with the entry ramada reaching out to welcome guests into the courtyard setting. The main living area at the center of the house fulfills the client's need for a backdrop for frequent entertainment of guests, and commands spectacular views of the rugged mountains to the northeast as well as vistas of the city to the west. Patio areas on both the northeast and southwest sides of the home provide settings for outdoor activities that are a tradition in the mild New Mexican climate. The master bedroom suite with the adjacent sunroom provides a quiet retreat for the owner as well as a chance to sample views and light from all directions.



**Nelson Residence**  
Albuquerque  
New Mexico

"A sophisticated handling of interior spaces using the most common of materials. The spaces are deliberately handled and are consistent with the interior. The spatial quality of the house is well conceived and executed."



The Nelson Residence derives meaning from a response to its site. Set in the foothills above Albuquerque, the house assumes two postures in relation to its surroundings. The face presented to the city is ordered and orthogonal, while the side which responds to the natural precinct of the mountains becomes fragmented and irregular. Two major axes organize the plan. The entry axis points the way to a nearby canyon and terminates in a shade structure which bridges over the perimeter wall in a move which signifies an open-ended connection between the house and nature. This connective link can also be read as a forest transformed into lithic permanence. The second plan axis is orthogonal to the city grid and finds its beginning as a skeletal framework of columns emerging from the site. At the spiritual center of the plan is a small entry court carved out as a circular space which turns in on itself and focuses the energy of this place.

**Owner / Client:**  
Ron Nelson

**Architect:**  
Westwork Architects, P.A.

**Project Team:**  
Glade Sperry, Jr., A.I.A.  
Cindy A. Terry, A.I.A.

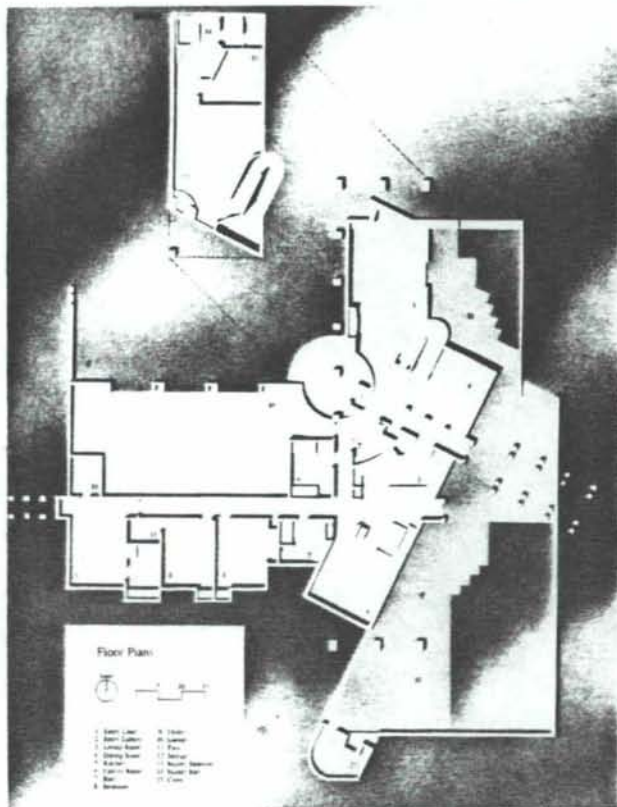
**Mechanical Engineer:  
Walker Engineering**

Structural Engineer:  
Chavez-Grievs Consulting Engineers, Inc.  
Electrical Engineer:  
Telcon Engineering, Inc.

Interior colors & furnishings:  
Patrician Design

**General Contractor:**  
Sunn Quality Homes

Photography:  
© Kirk Gittings/Syntax







Michael S. Rich Contractors, Inc.

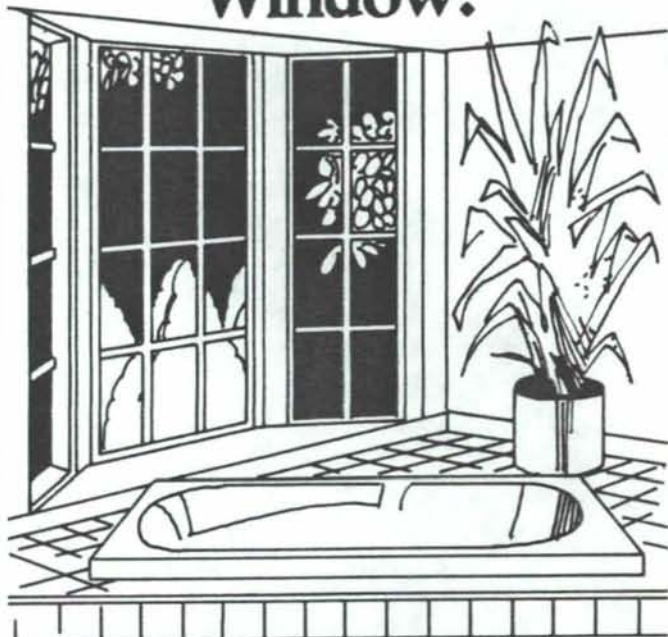
*Congratulations are extended to  
Van H. Gilbert, Architects  
for winning the  
NMSA Design Award  
and the  
TACA Award of Merit  
for the*

### *Rio Grande Zoological Park Bandshell*

*Michael S. Rich Contractors  
appreciated being associated with you  
on the project.*

(505) 884-6543 P.O. Box 90727  
4501 Brogan NE, Bldg. B, Suite 6 Albuquerque, NM 87199  
Lic. #28982

## The Go-Anywhere, Do-Anything Wood Casement Window.



One of Weather Shield's most popular window styles—they're weather-tight, easy operating and come in a variety of energy-efficient glazing options including true divided lites and Low E.

Choose from single, traditional double-wide or multiple units, angle bays and bows or picture combinations.

They're perfect for any architectural style in new home building or remodeling existing homes. Stop in to place your order or consult with a Weather Shield window expert about sizes, finishes, and designs.



*Congratulations are extended to Westwork Architects for their award-winning design of the Nelson Residence. We hope Ron Nelson will have many years of pleasure using the Weathershield double hung and awning windows.*

**Western Building Supply Co., Inc.**  
4201 Paseo del Norte, NE  
Albuquerque, New Mexico 87113  
(505) 823-2500

### KITTS ENTERPRISES INC.

5815 EDITH BOULEVARD, NE  
ALBUQUERQUE, N.M. 87125

Alder, Ash, Basswood, Birch,  
Aromatic Cedar, Spanish Cedar,  
Cherry, Honduras Mahogany,  
Phillipine Mahogany, Maple, Red  
Oak, White Oak, Ponderosa Pine,  
Sugar Pine, Poplar, Sassafras,  
Walnut, and Willow.

Stairway Components, Adhesives,  
and Abrasives.

Custom Milling and Hardware.

In Fact — Over 800 Items in Stock  
for High Quality, Architectural,  
Cabinet, Furniture, and Finish Work!

(505) 345-8135

New Mexico Toll Free:  
1-800-432-6820

Outside New Mexico Toll Free:  
1-800-545-6104



## PORTALS AT THE PASS: EL PASO AREA ARCHITECTURE TO 1930

Edited by Evan Haywood Antone, PH.D.,

Design and Drawings by Morris A. Brown, M.F.A., A.I.A.

El Paso: El Paso Chapter, American Institute of Architects, 1984.

Cloth, 56 pages, 29 photographs, 15 architectural sketches, 6 floor plans, map.

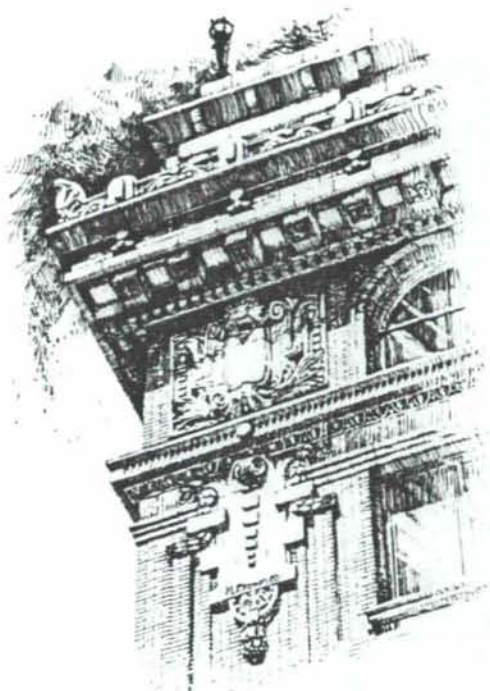
**Portals at the Pass: El Paso Area Architecture to 1930** is a feast of border architecture history published by the El Paso Chapter of the American Institute of Architects, El Paso, Texas in 1984. This unique book is richly illustrated with pen and ink renderings by Morris A. Brown A.I.A., M.F.A. He is the twin brother of Terrance J. Brown, A.I.A., who wrote and illustrated the feature article about the Maya in our September-October 1988 magazine.

**Portals at the Pass** describes the influences of culture, setting, character and technology of thirteen architecturally significant buildings built in El Paso 50 to 100 years ago. Seven of the thirteen chosen structures were designed by the venerable firm of Trost and Trost. The editor credits this firm as meriting recognition for "designing buildings that have endured both in beauty and in service, with special plaudits to Henry C. Trost, who almost single-handedly directed the design of early El Paso's downtown skyline". This fine book with its old photos, vivid descriptions and detailed illustrations attempts to illustrate the solid foundation upon which the El Paso area is built.

To order a copy of this limited edition book, send \$20.00 (shipping handling and taxes included in price) to:

Leonard Nordell, A.I.A.

c/o Garland and Hilles, Architects El Paso, Texas 79902  
4110 Rio Bravo Street (915) 533-3937



# HUGHES

## AND ASSOCIATES, INC.

**505-292-9770**

R5, BOX 5374C  
ALBUQUERQUE, NM 87123

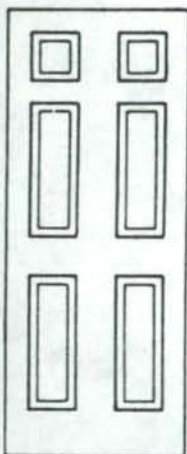
NM Lic. #28954

STEEL ERECTION • REBAR REPLACEMENT

PRECAST AND DYCORE SPECIALTIES

Congratulations Van Gilbert  
on award winning  
**RIO GRANDE ZOO BANDSHELL**  
and thanks  
City of Albuquerque  
and  
Britton & Rich, General Contractors  
for the opportunity to work on  
this challenging project.





# TRIM SHOP

Building Materials of New Mexico

ASK ABOUT "THE LOWEST PRICES IN THE SOUTHWEST  
ON PRE-HUNG DOORS & CABINETS"

520 Haines NW  
Albuquerque, NM 87102  
**(505) 247-3945**

**ASK ABOUT OUR NEW BLUE SEAL  
24 HOUR ON-CALL SERVICE PROGRAM**

- PRE-HUNG DOORS
- SOLID CORE
- HOLLOW CORE
- INTERIOR
- EXTERIOR
- KITCHEN / BATHROOM CABINETS
- DOOR / BASE MOLDING
- DOOR LOCKS & HARDWARE

This Space  
FOR  
SALE

Call:

Carleen Lazzell  
505/898-1391



## Hausman Steel Corporation

3502 Pan American Freeway N.E.  
Albuquerque, New Mexico 87107

Reinforcing Steel • Fabricating  
Concrete Accessories & Rentals  
Architectural Specialties

**1-800-432-6628      505-884-1891**

## ESTIMATORS... Who Needs 'Em!

Architects — Engineers — Developers  
Owners — Banks — Insurance Companies  
The Government — The Army — The Navy  
THE CONSTRUCTION INDUSTRY

**Construction  
Cost  
Management**

- Conceptual estimates
- Detail estimates
- Change order evaluation
- Disbursement supervision
- Insurable values
- C.A.C.E.S.

2413 NORTH MAIN • FORT WORTH, TEXAS 76106  
(817) 625-4271 • FAX (817) 625-0920

*Certified Professional Estimators*

*With Your Imagination  
We Can Create  
Concrete Structures of  
Distinction*

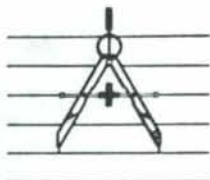


**Ferreri Concrete Structures, INC.**

3411 Candelaria, NE • Building 3  
Albuquerque, New Mexico 87107  
(505) 884-1221      FAX (505) 884-1225



## ARCHITECTURE+PLUS



P.O. Box 2106

Roswell, NM 88201

(505) 623-5700



4600 C MONTGOMERY BLVD NE  
ALBUQUERQUE, NM 87109  
505/883-8682

BRIDGERS & PAXTON CONSULTING ENGINEERS, INC.  
MECHANICAL ENGINEERING  
CHAVEZ-GRIEVES CONSULTING ENGINEERS, INC.  
CIVIL/STRUCTURAL ENGINEERING  
TIERRA DEL SOL ENGINEERING, INC.  
ELECTRICAL ENGINEERING



RICARDO A. BACA, P.E., C.P.E.  
Cost Consulting Engineer

1116 Wyoming Ave.  
El Paso, Texas 79902  
915/533-1176

In New Mexico  
Call  
505/883-9686



COMMERCIAL • INDUSTRIAL  
INSTITUTIONAL • GOVERNMENTAL

6501 AMERICAS PARKWAY NE Suite 700 ALBUQUERQUE NM 87110 • (505) 889-4100

### Holmes & Narver



Sergeant, Hauskins & Beckwith  
CONSULTING GEOTECHNICAL ENGINEERS

(505) 884-0950

4700 Lincoln Road, NE-Albuquerque, New Mexico 87109

PHOENIX • ALBUQUERQUE • SANTA FE • SALT LAKE CITY • EL PASO • TUCSON



STEVENS, MALLORY, PEARL & CAMPBELL, P.A.

ARCHITECTS  
115 AMHERST DRIVE, S.E.  
ALBUQUERQUE, NEW MEXICO

505 255-8668  
87106



WEBB-LEONARD-VAUGHAN  
ARCHITECT-ENGINEER  
3700 COORS ROAD N.W.  
ALBUQ., N.M. 87120

(505) 831-0434

consultants in acoustics  
21408 Devenshire Street  
Chatsworth, California 91311  
area code 818 + 882-7820



JACK B. C. PURCELL

Purcell + Noppe + Assoc. Inc.

## BPLW



Architects & Engineers, Inc.

505/861-2750

American Financial Center #5  
Suite 400  
2400 Louisiana Blvd. NE  
Albuquerque, New Mexico 87110

*Designing to Shape the Future*

## B

Boule Engineering Corporation

consulting engineers

Suite 600-E  
6400 Uptown Boulevard, N.E.  
Albuquerque, New Mexico 87110

505 / 883-7700



## AMERICAN READY MIX, INC.



### LOCALLY OWNED AND OPERATED KEEP YOUR CONSTRUCTION DOLLARS IN OUR STATE

We Support "Buy New Mexico"  
Management has over 50 years experience  
Quality and service unsurpassed  
MBE-DBE certified  
SUPERIOR PRODUCT AT COMPETITIVE PRICES

ALBUQUERQUE  
892-2332

SANTA FE  
471-8384

**There's something  
our competition  
doesn't want you to see.**



New Mexico's Largest Selection of:

Aluminum Windows  
Cabinets  
Counter tops  
Fine Appliances  
Designer Hardware  
Staircases  
Skylights  
Fireplaces  
Entry Doors  
Interior Doors  
Garage Doors

Displayed at  
**THE**  
**Showroom**  
by Hahn  
a subsidiary of Albq. Door Co.  
3601 Princeton, NE  
M-F 7-5 Sat. 9-1  
(505) 883-6170

## new mexico architecture

nma

Published bi-monthly by New Mexico Society of Architects,  
American Institute of Architects, a non-profit organization.  
Editorial Correspondence should be addressed to John P. Con-  
ron, Box 935, Santa Fe, N.M. 87504. (505) 983-6948.

**Editorial Policy:** Opinions expressed in all signed articles are  
those of the author and do not necessarily represent the official  
position of the publishing organization.

*Additional copies of NMA available from John P. Conron,  
FAIA/FASID, P.O. Box 935, Santa Fe, N.M. 87504.*

**Change of address:** Notifications should be sent to New Mexico  
Architecture, Box 935, Santa Fe, N.M. 87504 (505) 983-6948 at  
least 45 days prior to effective date. Please send both old and  
new addresses.

**Subscriptions:** Write Circulation, New Mexico Architecture,  
Box 935, Santa Fe, N.M. 87504. Single Copy \$3.00. Yearly  
subscription \$15.00.

**Advertising:** Send requests for rates and information to  
Carleen Lazzell, Associate Editor/Advertising Director, 8515  
Rio Grande Boulevard, N.W., Albuquerque, N.M. 87114, (505)  
898-1391.

**INDEX OF FIRMS** who make possible the publication of  
NMA and the page upon which their message can be  
found:

|  |    |
|--|----|
| Alexander & Alexander .....                    | 6  |
| American Ready Mix, Inc. ....                  | 18 |
| Albuquerque Door Company/Showroom by Hahn .... | 18 |
| Bob Brazell Photography .....                  | 2  |
| Commercial Kitchen Equipment .....             | 8  |
| Construction Cost Management .....             | 16 |
| Crego Block Co. ....                           | 19 |
| Crego Block Co. ....                           | 20 |
| Curtainwall Window Limited .....               | 2  |
| Ferreri Concrete Structures, Inc. ....         | 16 |
| Hausman Steel .....                            | 16 |
| Holman's, Inc. ....                            | 6  |
| Hughes & Associates .....                      | 15 |
| Kitts Enterprises, Inc. ....                   | 14 |
| Kohler .....                                   | 4  |
| Kohler/Active Supply Co. & PHC Supply Co. .... | 5  |
| The Mayhew Company .....                       | 6  |
| Pella Rio Grande, Inc. ....                    | 2  |
| Plant Designs .....                            | 2  |
| Michael S. Rich Contractors, Inc. ....         | 14 |
| Santa Fe Lights .....                          | 8  |
| School Equipment, Inc. ....                    | 8  |
| Seventy (70) West Workshop .....               | 8  |
| Trim Shop .....                                | 16 |
| Western Building Supply Co., Inc. ....         | 14 |

Printed by Hall-Poorbaugh Press, Inc., Roswell, New Mexico



**CREGO BLOCK CO.**

P.O. BOX 6466  
ALBUQUERQUE, N.M. 87197

6026 SECOND STREET N.W.  
TELEPHONE (505) 345-4451  
NM TOLL 1-800-634-1413

**PRESTRESSED  
CONCRETE****CONCRETE MASONRY****SECTION 2  
WORK**

|                       |  |
|-----------------------|--|
| Key-Lok Pavers        |  |
| Pavers                |  |
| Turf                  |  |
| Whole Block           | 5" & 8"  |
| der Block             |  |
| Coping Stones         | 8x2x16, 12x2x12, 18x2x18,<br>14" Round and 16" Round |
| ash Block             |  |
| ilops                 |  |
| Well                  |  |
| ding Bumpers          |  |
| Stone Retaining Walls |  |
| ck Plastic            | 4.5 Mil  |

**SECTION 3  
CONCRETE**

|                       |                     |
|-----------------------|---------------------|
| Core Hollow Core      | 6" , 8" , 10" , 12" |
| li-Mix Concrete       |                     |
| cast prestress panels |                     |
| ar #3 & #4            |                     |
| cast Lintels          |                     |
| gle Iron Lintels      |                     |
| crete Pavers          | 18" Square          |
| land Cement           | Sack                |

**SECTION 4  
MASONRY**

|                             |   |
|-----------------------------|---|
| ria Block                   | 4" , 6" , 8" , 10" , 12"                      |
| nice Block                  | 4" , 6" , 8" , 10" , 12"                      |
| ert Beige Block             | 6" , 8" , 10" , 12"                           |
| ckface Block                | 4" , 6" , 8" , 10" , 12"                      |
| /Flute 2" Block             | 4" , 8" , 9" , 12" , 13"                      |
| /Flute 3" Block             | 4" , 8" , 9" , 12" , 13"                      |
| /Flute 1 1/4" Block         | 4" , 8" , 9" , 12" , 13"                      |
| ttle Rock                   | 4" , 8" , 12"                                 |
| Block                       | 4" , 8"                                       |
| lius Block                  | 1" , 1.5" , 2"                                |
| red Block                   | 4" , 6" , 8" , 12"                            |
| Block                       | 8"  |
| OK Block                    | 8"  |
| E-LOK Block                 | 8"  |
| npblock 4" High             | 4" , 6" , 8" , 12" (5 Colors)                 |
| npblock 6" High             | 6" , 8" (4 Colors)                            |
| nd Block Type R & Others    |   |
| ss Block                    |   |
| zed Tile & Brick            |   |
| ctra-Glaze                  |   |
| cast Lintels                |   |
| gle Iron Lintels            |   |
| asonry Cement               | Gray, White                                   |
| land Cement                 | Gray, White                                   |
| e                           |   |
| / Spred                     |   |
| tar Color                   |   |
| -O-Wall                     | Ladur, Truss, Corners, Tees,<br>and Wall Ties |
| ansion Joint                | PVC, Rubber                                   |
| IFIL Insulation             |   |
| miculite/Perlite Insulation |   |
| -Klean 600 Detergent        |   |
| -Klean Vana-Trol            |   |

**SECTION 7  
STRUCTURE & THERMAL PROTECTION**

|                 |                |
|-----------------|----------------|
| ck Plastic      | 4.5 Mil        |
| ie-A-Pell       | 200, Tint Tone |
| iformal         |                |
| on              |                |
| f Ballast Block |                |
| Scoria          |                |
| nice            |                |

**SPEC SECTION 8  
DOORS & WINDOWS**

|                   |                    |
|-------------------|--------------------|
| Glass Block       | Pittsburgh Corning |
| Glass Block Vents | Aluminum or Vinyl  |

**SPEC SECTION 9  
FINISHES**

|                                 |                |
|---------------------------------|----------------|
| SUREWALL Surface Bonding Cement |                |
| SUREWALL FRP Insulation System  |                |
| SUREWALL Stucco Mix             |                |
| Elastic Coat                    |                |
| Prime-A-Pell                    | 200, Tint Tone |
| Conformal                       |                |
| Phylon                          |                |

**SPEC SECTION 10  
SPECIALTIES**

|                   |
|-------------------|
| Fireplace Units   |
| Dampers           |
| Fire Brick        |
| Fire Clay         |
| Sair-Set          |
| Angle Iron Lintel |
| Flue Liners       |
| Luminaria Block   |

**SPEC SECTION 11  
EQUIPMENT**

|                    |                  |
|--------------------|------------------|
| Masonry Hand Tools |                  |
| Mortar Stands      |                  |
| Saws               |                  |
| Saw Blades         |                  |
| Gloves             | Plastic, Leather |

**LANDSCAPING**

|                        |   |
|------------------------|---|
| Scoria                 |   |
| Black Plastic          |   |
| Stepping Stones        | 8x2x16, 12x2x12, 18x2x18<br>14" Round and 16" Round |
| Radius Block           |   |
| Treewell Block         |   |
| Scallop & Border Block |   |
| "I" Pavers             |   |
| Key-Lok Pavers         |   |

**SPEC SECTION 12  
FURNISHINGS**

|                   |   |
|-------------------|---|
| Planters          |   |
| Benches-Pilasters |   |
| Urns-Flue Liners  |   |
| Book Shelves      | Standard CMU's<br>Screen Block<br>Glass Block |

**SPEC SECTION 13  
SPECIAL CONSTRUCTION**

|                   |
|-------------------|
| Block Tromb Walls |
| Sound Block       |
| Solar Screens     |
| Pool Tile Coping  |
| Patio Brick       |

**SPEC SECTION 20  
SUPER "SERVICE"**

All Materials Made In U.S.A.

March-April 1989 / 19



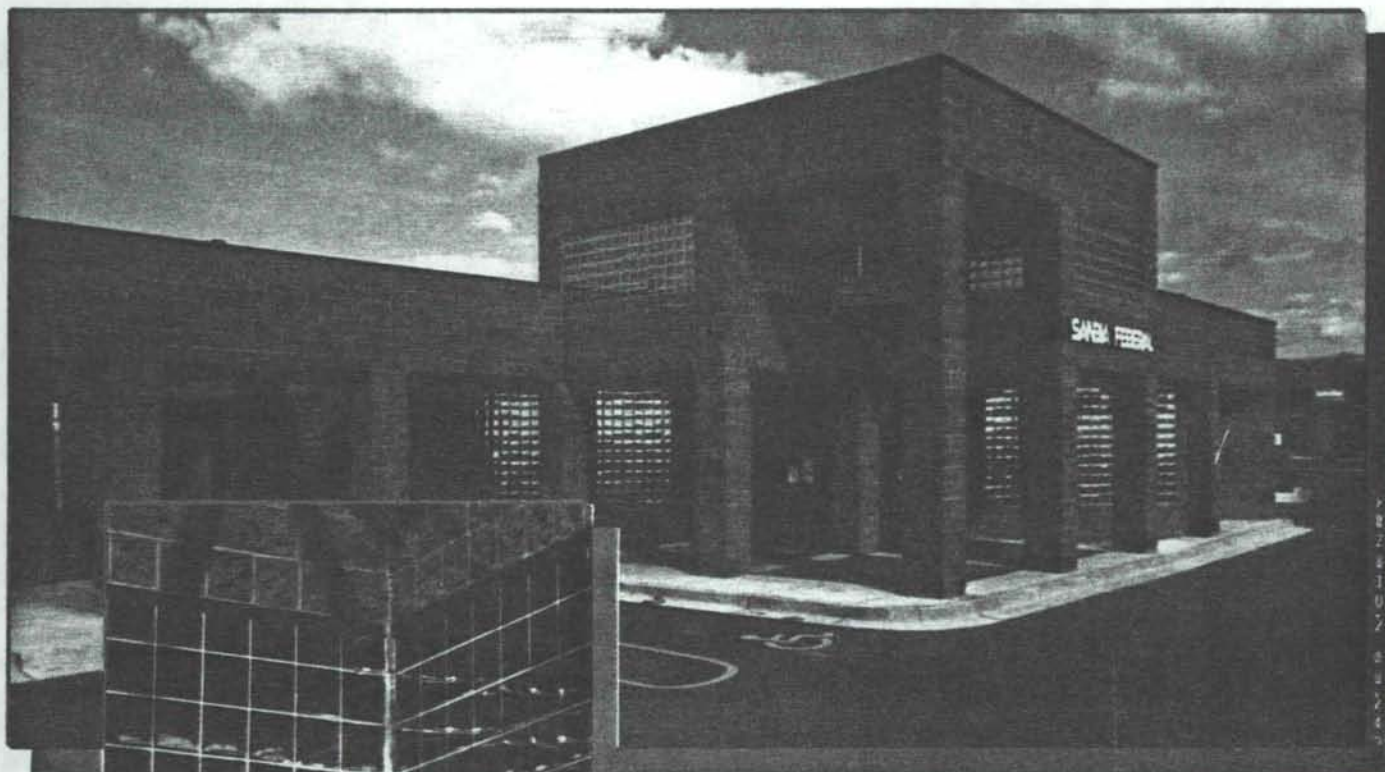
PITTSBURGH CORNING  
**PCGLASSBLOCK®**  
PRODUCTS

Postmaster: Address Correction Requested  
New Mexico Architecture  
8515 Rio Grande Blvd., N.W.  
Albuquerque, NM 87114

Bulk Rate  
U.S. Postage  
PAID  
Roswell, N.M.  
Permit No. 47

2652 059 03 08/89  
JAN D. BARNHART, CUR. ARCH.  
UNM GENERAL LIBRARY  
UNIVERSITY OF NEW MEXICO  
ALBUQUERQUE NM 87131

**...design with confidence**



## **GlassBlock for the 80's**

Sandia Federal employed Solar Reflective PC GlassBlock® to create dramatic reflections and gain the advantage of light transmission. Contact Crego Block Company to learn how PC GlassBlock® windows, walls and partitions can provide both exceptional beauty and strength for your specific applications.

DISTRIBUTORS FOR THE STATE OF NEW MEXICO  
WAREHOUSED IN ALBUQUERQUE



# **CREGO BLOCK CO**

6026 SECOND STREET NW 345-4451

**MASONRY PRODUCTS FOR ALL BUILDING, LANDSCAPING AND DECORATING**