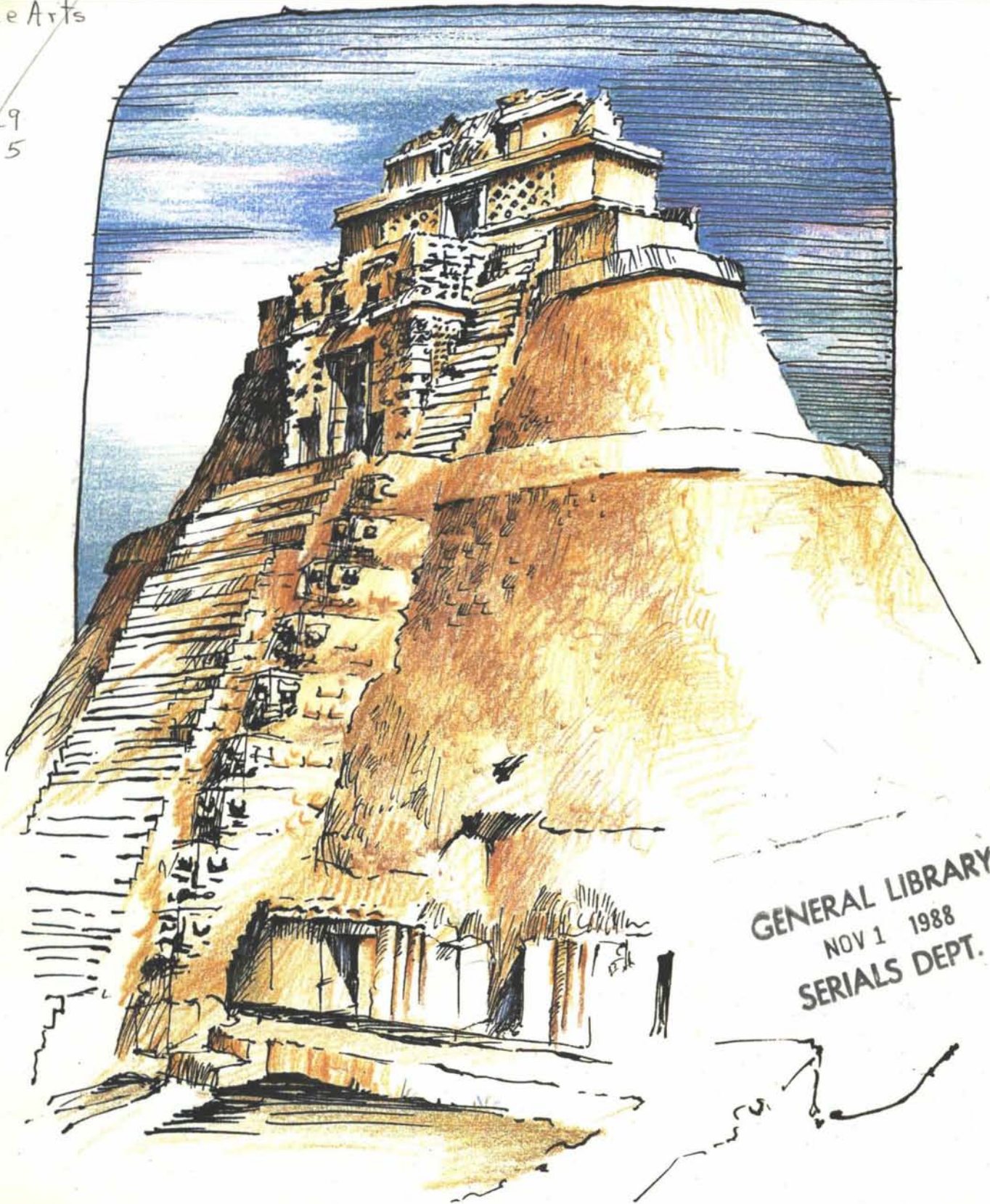


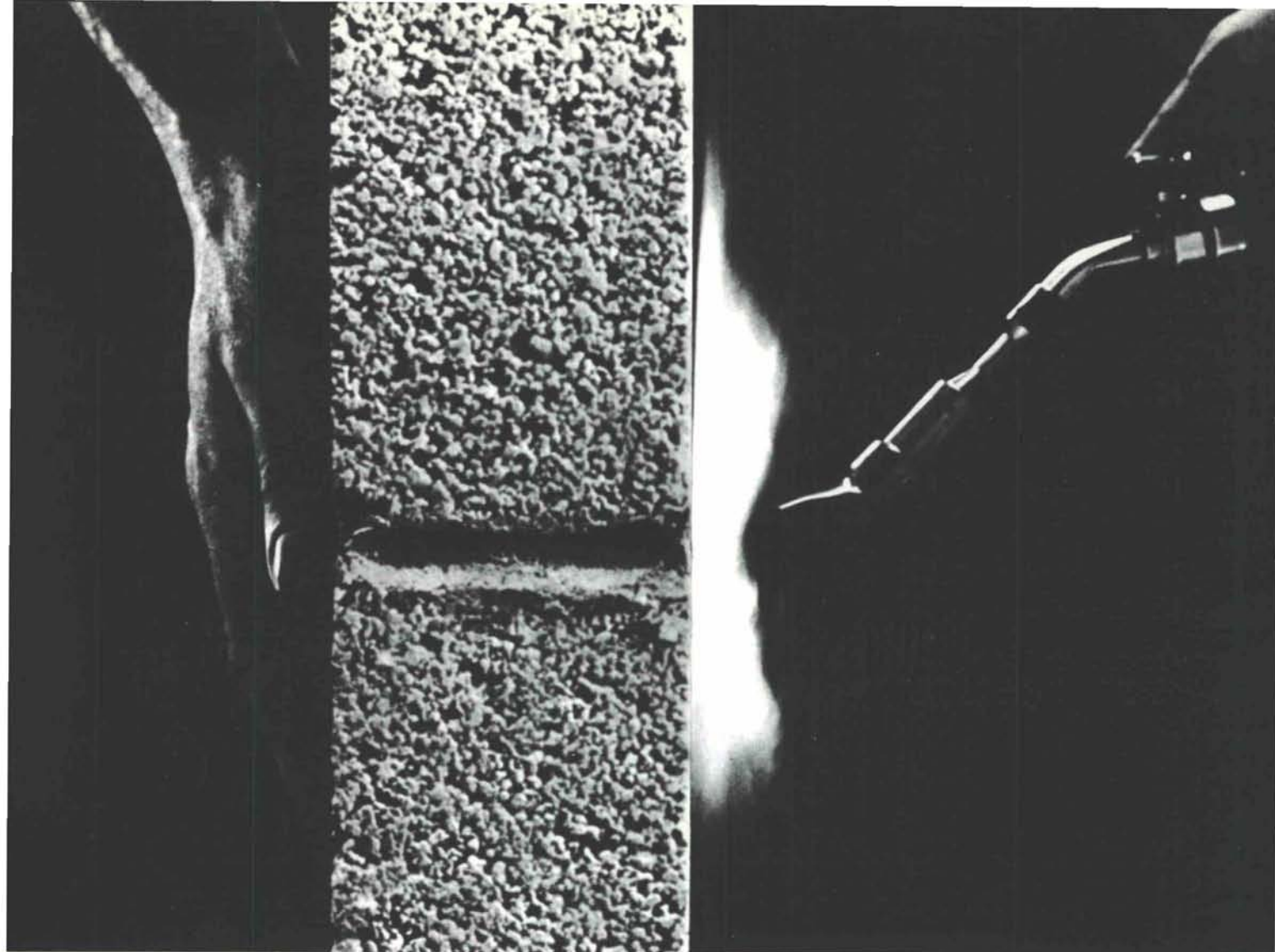
# New Mexico ARCHITECTURE

Fine Arts  
VA  
N4  
1.29  
no. 5



GENERAL LIBRARY  
NOV 1 1988  
SERIALS DEPT.





## A FAST, ECONOMICAL WAY TO A TWO-HOUR FIRE RATING.

Fire barriers between multiple dwelling units needn't be assembled with cook-book type instructions, paper-mache elements and lots of luck. By using concrete masonry walls, you can get a two-hour fire rating in a wall as slim as 3½" — weighing as little as 28 pounds per square foot — with the added plus of high STC ratings for occupant acoustical privacy.

And the masonry installation is simple, just one concrete block laid in mortar in a running bond on top of another concrete block. The work is all done by the same craftsman for the height of the wall and it is

easily inspected for potential deficiencies. This same ease of inspection is not available with the multi-phase, layered, paper-mache type of fire wall. (An 8 foot high fire wall built of standard 8" ASTM C-90 concrete block with type-N mortar can carry a concentric load of 5,800 pounds per lineal foot. Most fire-rated drywall walls are non-loadbearing.)

Come to think about it... have you ever seen a masonry wall burn? That is something to think about, the next time you build a stairwell or elevator shaft.



**CREGO BLOCK CO.**

P.O. BOX 6466  
ALBUQUERQUE, N.M. 87197

6026 SECOND STREET, N.W.  
(505) 345-4451



Courtesy of  
Masonry Advisory Council



# nma

• vol. 29 no. 5 •

sept. - oct. 1988 • new mexico architecture

This issue reports on the forthcoming Santa Fe Design Conference scheduled for November 3-5 at Sweeney Center. The conference will be provocative, informative and fun. We hope to see you all there.

Wrapped around the design conference information is a look, through the eyes and pen of Terrance Brown, AIA, at the wonderful, awesome architectural remnants of an ancient civilization - the Maya.

The drawing at the top of this column is a taste of the many sketches that follow in the "Maya Experience" that begins on page 9. The sketch is of the IK GOD, and is captioned "The Maya generously used the serpent, a mythological symbol and fertility god, in sculptural details". The cover, another of Mr. Brown's sketches, is of the "Temple of the Magician - Uxmal." The gracefully curving stone walls of this unusual pyramid are the last additions covering portions of four earlier shrines. Maya legend says that a dwarf, hatched from an egg, built this structure in one night, hence the name.

It might be of interest to our readers to recall the influence that the Maya had on early twentieth century Albuquerque architects. Edna E. Heatherington described that influence on two recently renovated buildings in the November/December 1987 issue of *New Mexico Architecture*.

Steven C. Yesner, AIA who prepared all the information on the Santa Fe Design Conference works with the architectural firm of Chambers Campbell & Partners in Albuquerque. A former member of the Santa Fe Chapter, AIA, Yesner served on the 1987 and 1988 conference planning committees and serves now on the 1989 Western Mountain Regional Conference planning committee. In addition he is a member of the Albuquerque Chapter, AIA Public Relations and Education Committee.

A contribution from the owner's of the Cloudcroft Lodge has helped to defray the cost of the July/August *NMA* cover, for which we thank them, of course.

The cover of this issue has been sponsored by Louis L. Weller Architects, PC with whom author Terrance Brown is associated. We sincerely appreciate Mr. Weller's contribution.

JPC

The Editor's Column	3
A Maya Experience by Terrance John Brown, AIA	9
The Impact of Architecture Environment, Community and Clients	14
Gyo Obata and the Work of HOK: Renowned Designer to Address Design Conference	15
Developers and Architects: A Case Study	16
AIA's Committee on Design Provides Design Awards Jurors	18
Spirited Santera to Host Conference Spouses A Visit with Monica Sosaya Halford	19
Architectural Tours: Santa Fe Style	20
Professional Directory	28
Advertiser's Index	30

(Cover— Temple of the Magician drawing by Terrance John Brown, AIA)

## —Official Publication of the New Mexico Society of Architects, A.I.A.—

### Society Officers

President—Richard R. (Toby) Pugh  
President-Elect—Wayne Lloyd  
Secretary—Brad Nesser  
Treasurer—Bill Freimuth  
Director—John Alejandro  
Director—Tim Christensen  
Director—Charles R. Dupwe  
Director—Jess Holmes  
Director—Thomas E. Hummell  
Director—Patrick McMurray  
Director—Tomás Méndez  
Director—Steven N. Newby  
Associate Director—Roger Easley  
NMSA Lobbyist—Dicki Ryals  
Executive Director—Sema Wynne

### New Mexico Architecture - Committee

John P. Conron, FAIA/FASID—Editor  
Carleen Lazzell—Associate Editor/Advertising Director  
Christopher Larsen, AIA—Chairman  
Van Dorn Hooker, FAIA—Past Chairman  
George Anselevicius, FAIA  
Marjorie Hooker, AIA  
Carolyn Kinsman, Designer  
Charles E. Nolan, Jr., AIA  
George C. Pearl, FAIA  
Glade F. Sperry, Jr., AIA  
V.B. Price—Architecture Editor, "Artspace"  
Don P. Schlegel, FAIA  
Christopher Wilson, Architectural Historian

International Standard Serial Number—0545-3151



The bottom line  
is NOT the cost,  
the bottom line  
is what you  
get for it!



**KLINGER**

CONSTRUCTORS, INC.

Albuquerque, New Mexico

COMMERCIAL AND  
INDUSTRIAL  
BUILDING  
CONTRACTORS

505-345-7891

**Pella has  
wood windows  
and doors  
for every  
home and office.**

**NEW CONSTRUCTION  
REMODEL / REPLACEMENT**

**"When Quality Counts"  
Call**

**Pella Rio Grande Inc.**

**The Pella  
Window  
Store®**  
 **Windows, Doors,  
Sunrooms & Skylights**

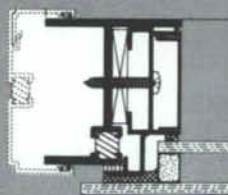
Albuquerque	(505) 345-3501
Santa Fe	(505) 984-2210
El Paso	(915) 833-3066
NM Toll Free	1-800-227-5240



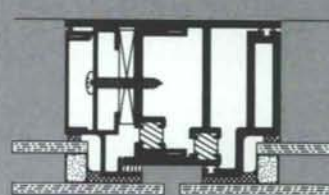
Aluminum Windows by  
**EFCO**

**Shadowline™**

**The Key to Hidden Mullions**



①



②

Represented in New Mexico by



**CURTAINWALL  
WINDOW LIMITED**

P.O. Box 782315  
Wichita, Kansas 67278  
1-800-233-1204



THE BOLD LOOK  
OF **KOHLER**®

Everything but everything for the kitchen sink. The Bon Vivant™. An expansive, versatile food preparation area: two extra-large basins and disposer basin, optional cutting board, drain basket, and a custom faucet package with hot water and soap dispensers. See the whole line of Kohler possibilities at your nearest Kohler distributor or write Kohler Co., Dept. 100, Kohler, Wisconsin 53044.

C5007 Copyright 1986 Kohler Co.



come  
and see . . .

THE  
BOLD  
LOOK OF  
**KOHLER**

in the showrooms at

---

**PHC Supply Company**

1000 Siler Park Road • Santa Fe, NM • Phone 471-1811 • 1-800-654-1476

---

**Active SUPPLY COMPANY**

1500 Candelaria N.E. • Albuquerque, NM • Phone 345-8587 • 1-800-354-7378  
541 Laser Road • Rio Rancho, NM • Phone 892-4401

---

**SHOWROOM HOURS:**

Weekdays: 8:00 - 5:00 • Saturday: 8:00 - 12:00



# CORIAN®

SOLID BEAUTY THAT LASTS...FROM DU PONT



**WHOLESALEERS OF:**

Corian  
Karman Cabinets  
Artistic Brass  
Omnia Door Hardware  
Bates & Bates Brass Bath Fixtures

## FOR THE QUALITY THAT COUNTS!



**Distributing**

**1-800-445-4975** (in state)  
**505-843-9774**

1120 1st Street NW, Albuquerque, NM 87102

# ***TOWERING ABOVE THE REST.***

Take a look around. From site to site, the Jaynes name has become a symbol for excellence just about everywhere you go. It's not hard to tell who's at the forefront of the industry.

Your Single Source Builder  
Albuquerque 345-8591  
Farmington 326-3354  
License No. 4866



## **FOR HARD WORK- LONG HOURS**

Furnishings For:

Schools  
Cafeterias  
Libraries  
Laboratory Casework  
Auditoriums  
Stadiums

**SEI** School  
Equipment  
Inc.

3225 Candelaria NE  
Albuquerque, NM 87107

**505-888-5959**



**KEER'S  
INC.**



**KEER'S, INC.**  
Coating Contractor

SATISFYING  
QUALITY MINDED  
CUSTOMERS  
SINCE  
1960

**WE EXCEL IN:** *Historical Restorations  
Color matching  
Industrial Coatings  
High Work  
Sprayed Acoustical Systems*

**505-884-1780**

N.M. License #6693

3323 STANFORD, N. E.

ALBUQUERQUE, NEW MEXICO 87107

**AMERICAN READY MIX, INC.**



**LOCALLY OWNED AND OPERATED  
KEEP YOUR CONSTRUCTION  
DOLLARS IN OUR STATE**

We Support "Buy New Mexico"  
Management has over 50 years experience  
Quality and service unsurpassed  
MBE-DBE certified

**SUPERIOR PRODUCT AT COMPETITIVE PRICES**

ALBUQUERQUE

892-2332

SANTA FE

471-8384



P.O. BOX 6407 ALBUQUERQUE, N.M. 87107

*Congratulations  
for a  
Successful  
Santa Fe  
Design  
Conference*

**MEETING THE NEEDS OF NM ARCHITECTS  
FOR 20 YEARS**

**FABRICATORS, DISTRIBUTORS,  
INSTALLERS  
of Prefinished Architectural  
Steel & Aluminum**

- Standing Seam Roof Systems
- Mansard Systems & Building Facings
  - Parapet Covers & Special Trims
  - Walkway & Parking Canopies
  - Service Station Canopies

**505-247-2214**

NM License #10016

• **MARBLE**  
• **GRANITE**  
• **TRAVERTINE**  
• **SLATE**  
• **LIMESTONE**  
• **SANDSTONE**  
• **CANTERA**

— FOR —

- Kitchen counters
- Vanity tops
- Fireplace surrounds
- Flooring
- Interior/Exterior cladding
- Installation/Restoration
- Architectural Assistance  
for ANY type of Natural  
Stone

**505-345-8518**

**ROCKY MOUNTAIN  
STONE COMPANY INC.**  
4741 Pan American Frwy. N.E.  
Albuquerque, New Mexico

(south of Jefferson on West Frontage Road)

*Your Custom Marble Source*

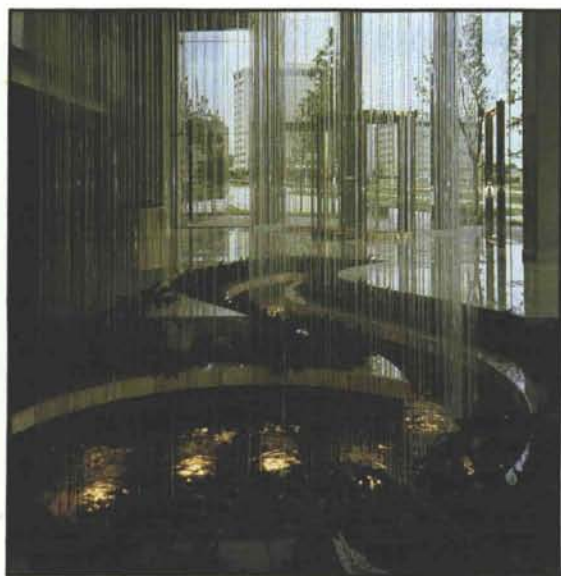


**“When space is at a premium and your client insists on an extraordinary display, specify the Roman Fountains Rain Curtain.”**



Based on the ancient concept of water running down bamboo, the Roman Fountains' rain curtain can be designed for ceiling heights in excess of 50' in a variety of geometric shapes and sizes to match virtually any interior architectural motif.

In most cases, a 3' wide collection pool is all that is required to contain the water, and its low-flow design reduces horsepower requirements and energy consumption. If your next project calls for the extraordinary, give us a call. We've developed an extraordinary product that doesn't tie up your space.



*If the Specifications for Your Next Fountain Display Include Experience, Single Source Responsibility, and A Genuine Commitment to Customer Service and Satisfaction, Please Write, Fax or Give Us A Call Today.*

**roman  fountains®**

P.O. Drawer 10190  
Albuquerque, New Mexico USA 87184  
Phone: (505) 828-1801 • Fax: (505) 828-1904



## KITTS ENTERPRISES INC.

5815 EDITH BOULEVARD, NE  
ALBUQUERQUE, N.M. 87125

Alder, Ash, Basswood, Birch,  
Aromatic Cedar, Spanish Cedar,  
Cherry, Honduras Mahogany,  
Phillipine Mahogany, Maple, Red  
Oak, White Oak, Ponderosa Pine,  
Sugar Pine, Poplar, Sassafras,  
Walnut, and Willow.

Stairway Components, Adhesives,  
and Abrasives.

Custom Milling and Hardware.

In Fact — Over 800 Items in Stock  
for High Quality, Architectural,  
Cabinet, Furniture, and Finish Work!

(505) 345-8135

New Mexico Toll Free:  
1-800-432-6820

Outside New Mexico Toll Free:  
1-800-545-6104

# CLIFTON CONSTRUCTION, INC.

New Construction  
Renovations  
Tenant Development



Lic. #25239

(505) 884-7300

P. O. Box 22742 • 3540 Pan American Frwy. NE  
Albuquerque, New Mexico 87125

Insurance for the Design Professional  
New Mexico's  
Professional Engineers  
and Architects

# Alexander & Alexander

**BONDING &  
INSURANCE**

**Since 1925**

Call Bob Dean, Professional Liability Specialist

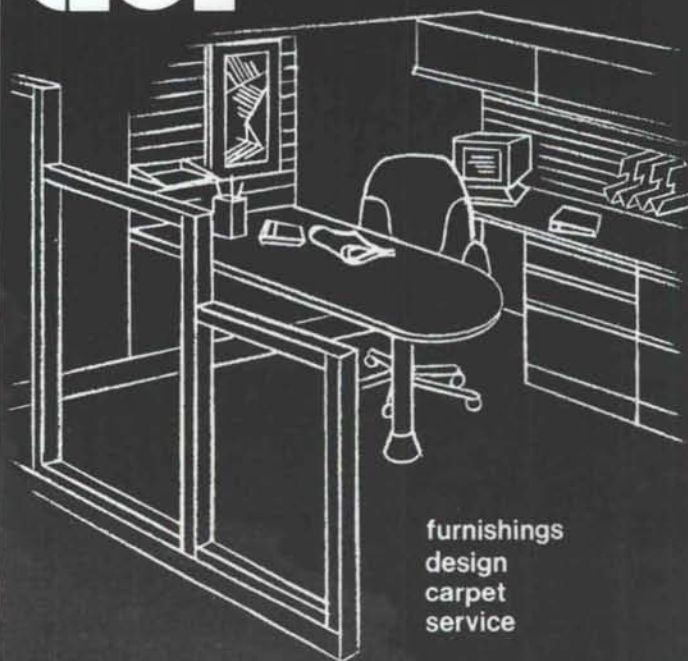
TELEPHONE (505) 883-8282  
N.M. WATS 1-800-432-5882

Suite 200  
6000 Uptown Blvd. NE

P.O. Box A  
Albuquerque, N.M. 87103



american  
business  
interiors



furnishings  
design  
carpet  
service

612 central sw

883-2055



# A MAYA EXPERIENCE

By Terrance John Brown, AIA

## AN OVERVIEW

By the 4th century A.D. the Roman Empire had fallen, the deadly grip of the plague had spread across the Mediterranean from Africa. Cities were wiped out and agriculture was in shambles leaving dying populations all across the continent.

Across the ocean, a highly advanced civilization was beginning to flower. A group of people called the Maya began to carve into stone monuments their earliest known records of accomplishments. Knowledge of writing by a small portion of its population set the Maya apart from all other cultures of the Americas.

The temple complexes and gleaming white monumental plazas began with humble origins. George F. Andrews in *Maya Cities* says that "the conscious arrangement of these dwellings around an open space as an expression of social order is a fundamental first step, leading toward the more formalized configurations to come later." He goes on to say that "the paved plaza is neither forest nor farmstead - the very act of its removal from fortuitous nature makes it unique and self-conscious, a fitting response to the need for self-determination which characterizes civilized man throughout the world."

From these beginnings, tropical city complexes with spacious plazas, great reservoirs and towering temples covered with painted stucco were constructed. The jungle was an environment rich in agriculture which sustained large populations.

By the time the Spaniards first landed on the beaches of Central America, most of the Maya temples and stone cities were abandoned receding into the jungle. No one knows why the Maya left these civic centers. In an article written by Manuela Hoelterhoff, Linda Schele and Mary Ellen Miller, curators of an exhibition entitled *The Blood of Kings*, the destabilizing effects of poor agricultural habits and constant warfare are linked to the collapse. Schele and Miller contend that the May did not venture forth in battle for reasons we consider normal-to vanquish other peoples and build a vast empire. The lords waged war on one another to take prisoners for religious ceremonies. I tend to agree that human sacrifice played a major role in the breakdown of the society.

Voluminous studies have been made of the architecture and people of the Roman, Greek and Egyptian civilization, but little has been written about the Maya. It wasn't until 1840 that attention was focused on crumbling ruins in Mexican and Guatemalan jungles by an American explorer, John Lloyd Stephens, and an English architect named Frederick Catherwood. Because of Stephens' books and Catherwood's sketches, the world caught its first glimpse of an American civilization that in numerous ways equaled that of Rome or Greece.

## The Journal December 5, 1980

I spent all day walking around the magnificent ruins of Copan, mesmerized by the delicate, yet majestic stelae and pyramids. Hundreds and hundreds of stone steps acted to enclose the plaza as we would now do with walls. It reminds me of a football field with stone bleachers. I wanted to see everything. I sketched and sketched and marveled at one section of stone stairs leading up the side of a hill. Each tread had hieroglyphics carved into it like a giant billboard climbing up a mountain.



### KAN-XUL

#### PROFILE OF A RULER SITTING ON SLAVE.

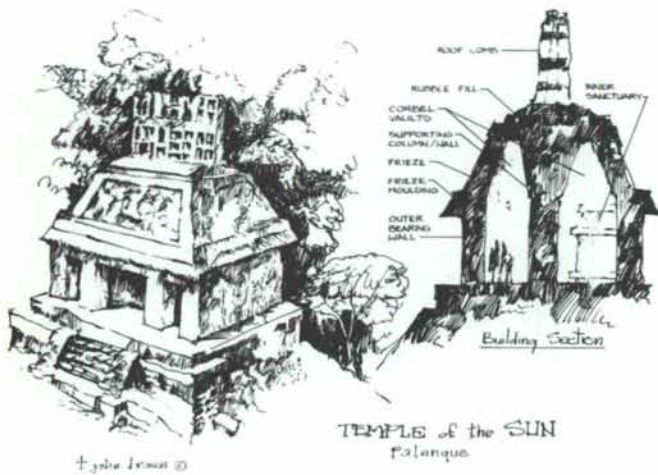
Kan-Xul, the ruler of Palenque, assumed power on June 1, 702. This bas-relief carving depicts Kan-Xul with jade jewelry, sitting on two bound captives.



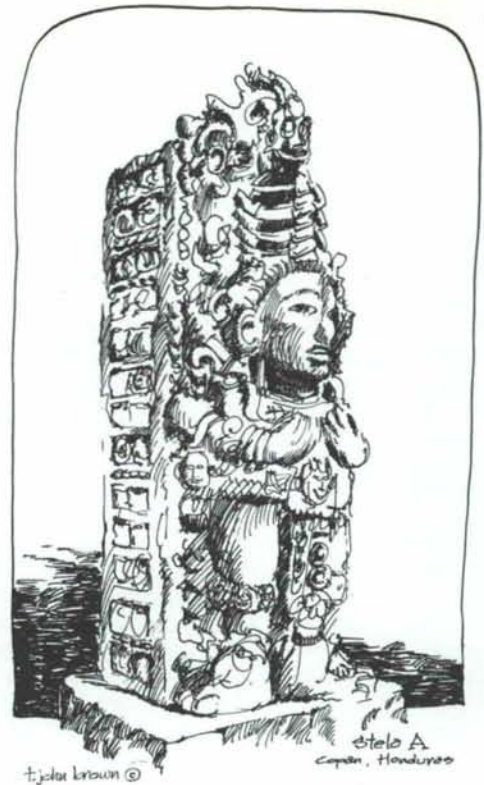
### TURTLE ALTAR

Zoomorphic sculpture has been found at many ancient Maya sites and probably served as commemorative monuments similar to stelae.

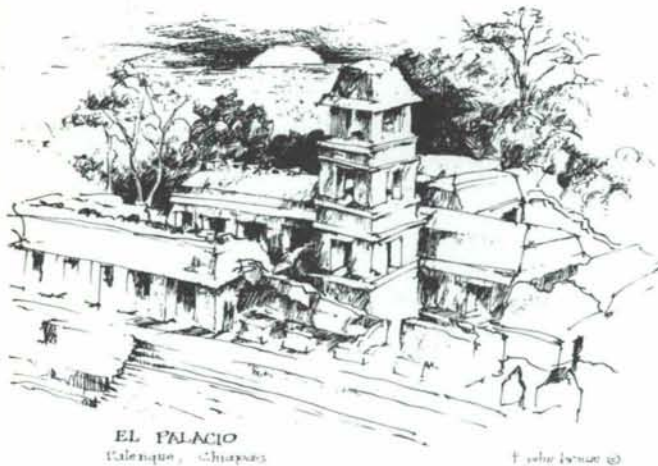




**TEMPLE OF THE SUN (Building Section)**  
*This graceful building with a high roofcomb is heavily ornamented in stucco decoration.*



**STELAE A**  
*Dated A.D. 731 depicts a high ranking aristocrat decorated with jade and brightly colored feathers of exotic birds. His face is one of the most sensuous carvings produced by Maya sculptors of the Classic Period.*



**EL PALACIO - PALENQUE**  
*El Palacio covers an area about the size of a city block. Its four-story tower is unique in Maya architecture and offers a compelling vantage point for Palenque's rulers. The winter solstice was probably studied as the sun "set into the Temple of the Inscriptions".*

The 12 foot high stelae, depicting elegantly dressed rulers, are so detailed with carving they beautifully define sculpture in the round. The face on Stelae A is especially sensitively carved. I was amused by the Turtle Altar that was carved of stone with long claws and a toothy grin, appearing ready to spring. On the stairs of the temple is the carving of a snake crawling out of Ik God's mouth. These are intriguing examples of the strange and awesome style of Maya sculpture.

Copan is literally strewn with great art, overwhelming in its magnitude.

#### January 4, 1981

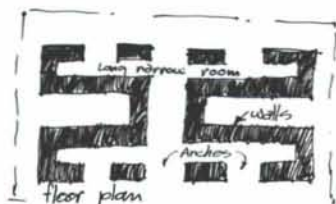
It was 1971 when I first saw the jungle-covered ruins of Palenque. I was on my way to explore South America then. Now I'm back for a closer look.

The Maya were known to study our planets over long periods of time and accurately measured the length of a year. Many of the observations could have been made from the tower in El Palacio.

Relief carvings in limestone slabs such as that of the ruler Pacal sitting on bound captives are exquisite in design and craftsmanship and were used as wall decorations on the exterior and interior of these temples.

In 1949, a Mexican archeologist named Alberto Ruz discovered a stairway under the floor of the Temple of Inscriptions. After excavation deep below the pyramid crown, he found a sealed crypt with a five ton stone lid intricately carved. In this stone coffin was a Maya chief heavily bejeweled with jade. This discovery was notable in that it was the first Maya temple to be used as a burial chamber much as the Egyptians had done.





**MAYA CORBELED ARCH**  
Copan, Honduras

T. John Brown ©

### MAYA CORBELED ARCH

The improved technology of the corbeled arch set off a flurry of building activity and became the standard method of forming temple ceiling vaults.

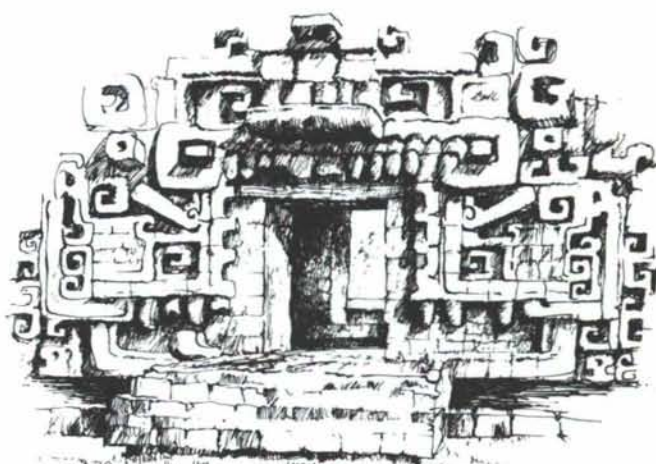
The Maya were experts in picking majestic sites for their buildings. Palenque sits tucked against a tropical forest a thousand feet above the plain of Teuantepec and adapts gently to the contours of the mountainside. Most of the temples were built up against the mountains and therefore were not symmetrical pyramids. The architects found that by leaning stone walls in as they go up, forming corbels at the top, greatly increased the floor space in these buildings. The Temple of the Sun is a good example of this style.

### January 16

I'm camped beside the ruins of Chicanna where there are several small rundown buildings with the exception of the facade of one of them. The side of this building was covered with a giant monster head with its jaws wide open around the doorway. Another small building along a jungle path is high enough to allow a view over the tops of the trees from its upper doorway. The corners of this building have geometric faces of Chac (rain-God) with his big nose, stacked one upon each other.

### February 12

Today I explored Chitzen Itza. What a tremendous center of Late Classic life. Everything about it is impressive; the scale of the pyramids, ball court, reviewing stands, the sculpture and the large expanse of the court yards. The bas-relief wall panels depict eagles eating human hearts, and the whole base of a building is encrusted with carvings of thousands of human skulls. The stairway up the great pyramid called El Castillo is treacherous. Even with the thick chain handhold running the length of the entire steps, one could easily tumble all the way to the bottom. El Castillo has 91 steps up each of its four sides which number 364. Counting the top platform, the steps equal the total number of days in a year.



**CHENES-STYLE RAIN MONSTER MASK**  
Chicanna, Campeche

T. John Brown ©

### CHENES STYLE RAIN MONSTER MASK

This elaborate entrance is typical of Chenes and Rio Bec architecture. The door resembles a dragon mouth with heavily stuccoed mask forms surrounding it.



**TEMPLE OF THE INSCRIPTIONS**  
Palenque

T. John Brown ©

### TEMPLE OF THE INSCRIPTIONS - PALENQUE

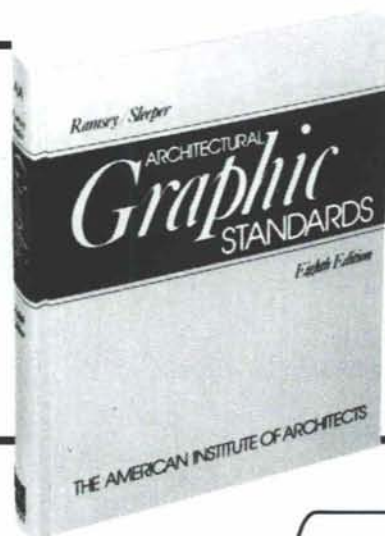
Eighty feet below the Temple of the Inscriptions is the tomb of Lord Shield Pacal, ruler of Palenque. The lid of the sarcophagus weighs five tons and is intricately carved in bas-relief depicting the dying Pacal in the jaws of an underworld monster.

Continued on page 23



# LOOK HERE...

Now  
Available at  
HOLMAN'S  
for only  
\$150.00



...in the brand new  
Eighth Edition of  
*Architectural  
Graphic Standards.*

With new chapters on Historic Preservation, Sports Facility Design, and Energy Design—all for the first time ever in *Graphic Standards*—it's the most significant revision in the 56-year history of "the architect's bible."

- LARGEST EDITION EVER—864 PAGES, 10,000+ ILLUSTRATIONS
- 65% NEW OR REVISED
- FIRST *Graphic Standards* WITH COMPLETE CHAPTERS ON HISTORIC PRESERVATION, SPORTS FACILITY DESIGN, AND ENERGY DESIGN.

Ramsey/Sleeper  
ARCHITECTURAL  
**Graphic**  
STANDARDS, Eighth Edition

Prepared by the American Institute of Architects

John Ray Hoke Jr., AIA, Editor in Chief

**WILEY**

STORE HOURS:  
M-F 8-5:30 / SAT. 10-3

**HOLMAN'S**

VISA  
MASTERCARD  
AMERICAN EXPRESS

401 WYOMING NE / ALBUQUERQUE, NM 87123 / (505) 265-7981

## What do you call someone who uses the floor to heat their home?

Smart. Very smart. Because there's no more logical way to heat a home than with the revolutionary Infloor™ Heating System.

The concept is simple: Hot water tubes or electric heating cables are laid out on the subfloor and then embedded in Gyp-Crete 2000™ Infloor Blend, a flowable floor underlayment. The system warms the underlayment, which gently radiates heat into the room.

It's clean, efficient and unsurpassed in comfort. There's no moving air to create drafts or stir up dust.

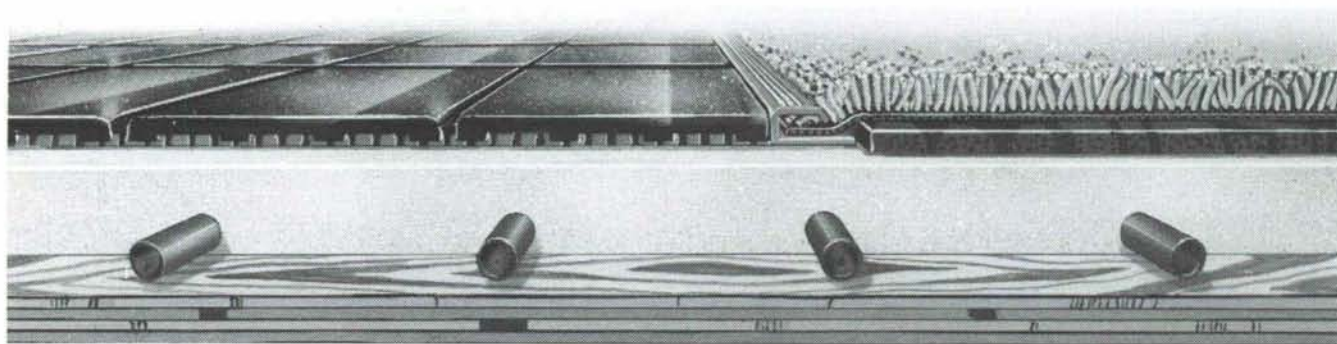
Just pleasantly warm floors silently radiating heat.

And with Infloor, there are no baseboard units, hot-air registers or cold-air returns. Nothing to interfere with the placement of furniture.

For more information, contact:

**Brekke Distributors**  
P.O. Box 59465  
Dallas, TX 75229  
214 484-8948

**INFLOOR**  
HEATING SYSTEMS





# KINNEY BRICK COMPANY

CUSTOM RESIDENTIAL



COMMERCIAL BUILDINGS

**CLAY BRICK**  
**A SURE SIGN OF QUALITY**

- BEAUTIFUL
- FLEXIBLE
- DURABLE
- AVAILABLE

"WE'RE READY TO HELP WITH YOUR BRICK PROJECTS"

ALBUQUERQUE

(505) 877-4550

**DAVIS &  
ASSOCIATES  
INC.**

**P O Box 2184  
Santa Fe  
New Mexico  
87501**

**GENERAL  
CONTRACTORS**

**(505)  
988-2894**



# THE IMPACT OF ARCHITECTURE: ENVIRONMENT, COMMUNITY AND CLIENTS

by Steven C. Yesner, AIA

The Third Annual SANTA FE DESIGN CONFERENCE, sponsored by the New Mexico Society of Architects, will be held November 3-5 at Sweeney Center in Santa Fe. This year's program centers around questions and issues of how the work of architects affects the built environment, community values, and the people who generate architectural projects.

## The Theme of the 1988 Conference

The title theme selected for 1988 is "The Impact of Architecture." The speakers, seminars and tours will address the relationships among architect, developer and building owner.

What is the impact of the architect's work on developers, institutions, government agencies, home builders and other who procure or own buildings? On what basis do developers and owners select architects? Is it primarily based on aesthetics, economy, past experience, size of firm, a combination of these or other criteria? To what degree is the creation or renovation of a building motivated solely by profit or simply to provide more physical space?

How does aesthetic and functional design affect the marketability of a commercial project or the success of a public facility? How do related fields such as planning, landscape architecture and interior design contribute to the impact of architecture? How important are architectural photography, model-making, delineation and computer-generated graphics to the "selling" or promotion of an architect's ability or the owner's project?

## The History of the Design Conference

The Design Conference is an outgrowth of the annual meeting of the New Mexico Society of Architects (NMSA), which traditionally was held in turn at the location of each of the four chapters of the Society. In 1986, it was the Santa Fe chapter's turn to be host. Don Schlegel, FAIA, who was NMSA President at the time, proposed the creation of an inter-disciplinary design conference in conjunction with the annual meeting "to be open not only to Architects, but also to other professionals involved in the molding of our physical environment."

Santa Fe was chosen as a permanent location for the conference because of its prominence as a major cultural center of the Southwest. The concept was to develop the design conferences as a series of dynamic symposia and lectures, including nationally recognized participants and speakers, so as to "eventually attract national attention and participation."

## The Star-Studded Program

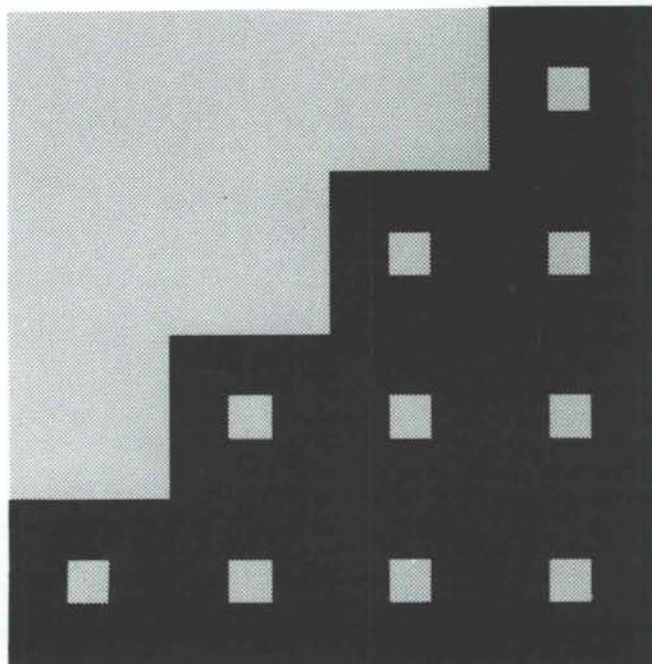
This year's conference will certainly live up to those expectations. Not only will participants learn from nationally renowned designers and developers like Gyo Obata of Hellmuth Obata & Kassabaum, Paul Silverman of Trammell Crow, Rodney Friedman of Fisher, Friedman and Elwin Stevens of the State University of New York, they will have the opportunity to visit award-winning projects in the Santa Fe area with the people who made them happen, see an exhibit of NMSA members' work evaluated by a jury from the AIA National Committee on Design, and see the latest architectural product lines available in the Southwest.

Other articles in this issue describe the eminent speakers, the projects to be visited on tours, and the background and credentials of the design awards jury.

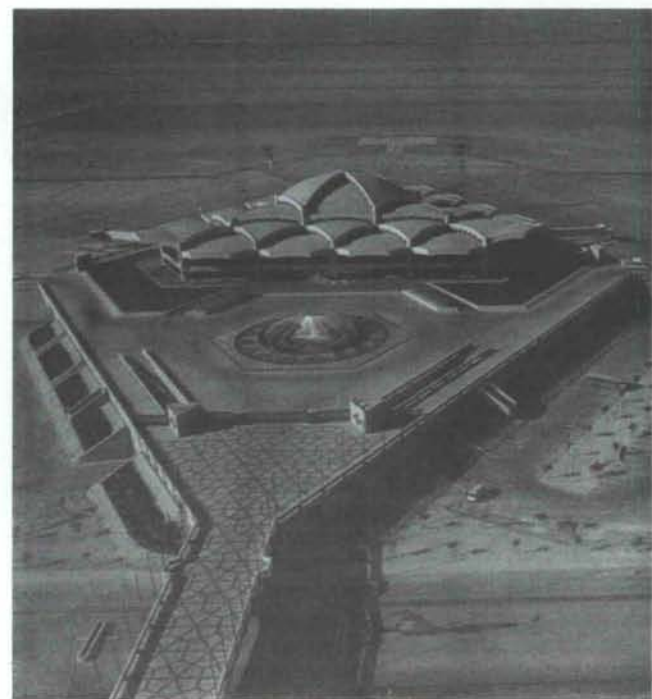
In addition, there will be receptions, a golf tournament, spouse events and a banquet at the new Museum of Indian Art and Culture featuring the NMSA Design Awards and humorist, Jim Arnholz.

1988  
DESIGN  
SANTA FE

SANTA FE  
CONFERENCE  
NEW MEXICO



It's an opportunity you shouldn't miss.



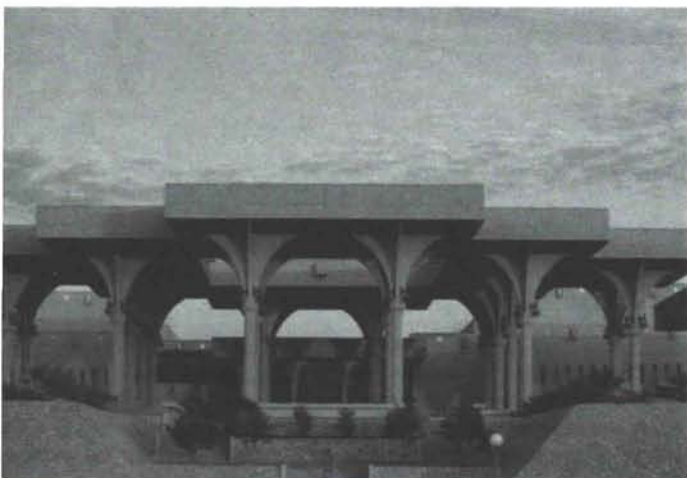


# GYO OBATA AND THE WORK OF HOK: Renowned Designer to Address Design Conference

by Steven C. Yesner, AIA



Gyo Obata, founder, CEO and design leader of Hellmuth Obata Kassabaum. Below left: King Khaled Airport, Riyadh, Saudi Arabia. Below right: King Saud University, Riyadh, Saudi Arabia.



HELLMUTH, OBATA & KASSABAUM, familiarly known as HOK, is one of the five largest architectural design firms in the U.S., headquartered in St. Louis, with offices in Dallas, Houston, Kansas City, Los Angeles, San Francisco, New York, Washington, D.C., Tampa, Denver, London and Hong Kong. It is recognized internationally for the scope of its projects and diversity of its practice, which includes architecture, engineering, interior design, landscape architecture, graphic design, facility programming and computer-aided design.

Gyo Obata, FAIA, is chairman, president and chief executive officer of HOK, Inc. Beyond his administrative duties, he establishes the fundamental design direction for the firm, working closely with the designers of each office to develop and refine projects to their final form.

Obata will give the keynote address at the 1988 Santa Fe Design Conference. While he is in New Mexico, he will undoubtedly take the opportunity to visit HOK's current project in Albuquerque, the BetaWest mixed-use development next to Civic Plaza.

## Growth of a Corporate Giant

Obata comes from a long line of Japanese classical artists. His father, who was a professor of art at the University of California in Berkeley, introduced the traditional *sumi-e* style of painting to the West Coast. His mother did the same thing for *ikebana*, the Japanese art of flower arranging.

Obata studied at Berkeley, Washington University in St. Louis and Cranbrook Academy of Art in Michigan, completing degrees in architecture and urban design. After serving in the U.S. Army in World War II, he worked in the Chicago office of Skidmore, Owings and Merrill and as an assistant to Minoru Yamasaki in Detroit before joining George Hellmuth's firm in the early 1950s. In 1955, he helped found HOK as Principal-in-Charge of Design.

From a staff of 26 and projects once concentrated in the Midwest, HOK has grown to an organization of about 800 employees with commissions all over the world, including office buildings and corporate headquarters, criminal justice facilities, mixed-use and retail complexes, research and development laboratories, transportation facilities, education complexes, health care facilities, athletic facilities, hotels and conference centers.

HOK also has several historic property rehabilitation projects to its credit, such as St. Louis Union Station designed by Link and Millet in 1891, New York City's Murphy Center (formerly the Municipal Asphalt Plant) designed by Kahn and Jacobs in 1944, and an addition to the Dulles Airport Terminal Building designed by Saarinen in 1960. In addition, HOK now markets its own copyrighted CADD software through a subsidiary service corporation to other A/E firms.

Along the way, Obata and HOK have developed an affinity for superlatives, particularly in terms of size, boasting design of the largest data processing facility (McDonnell Douglas Automation Co.), the largest column-free exhibit space (Moscone Convention Center), the largest construction project (King Saud University), and the most popular museum (National Air and Space Museum).

## HOK's Philosophy of Design

And yet Obata's designs are widely recognized for their human-scaled detailing. His design philosophy is to "solve prob-



lems posed by the space needs of people, and go beyond pure function to provide spaces which will enhance the lives of their occupants." He does this by considering the needs of people first, then designing "from the inside out". His multi-disciplinary approach is directly related to the micro-to-macro philosophy espoused by Eliel Saarinen, with whom he studied at Cranbrook.

Obata's best known projects include the National Air and Space Museum for the Smithsonian Institution (1976), the low-rise Levi's Plaza corporate headquarters in San Francisco (1982), the 2400-acre campus of King Saud University in Riyadh, Saudi Arabia (1984) and the mammoth St. Louis Union Station renovation (1985). Other notable projects designed under his direction include the Dallas Galleria (1977), the underground Moscone Convention Center in San Francisco (1981), the Houston Galleria (1983), King Khaled Airport in Riyadh (1983), Kellogg Co. headquarters in Battle Creek (1985), BP America /SOHIO headquarters in Cleveland (1986) and the Taipei World Trade Center in Taiwan (1988).

Obata has received hundred of design awards, including citations from the American Institute of Architects and the General Service Administration, the Institute of Business Designers, the Urban Land Institute and the Federal Design Council.

At age 65, he is a grandfather and passionate gardener as well as globe-trotting architect and corporate executive. His drive seems undiminished. "I do a lot of designing on airplanes," he says, "because there are no disturbances and you can become totally immersed in a project and work on an idea."



National Air & Space Museum, on the Mall, Washington, D. C.

## DEVELOPERS AND ARCHITECTS: A CASE STUDY

Interview by Steven C. Yesner, AIA

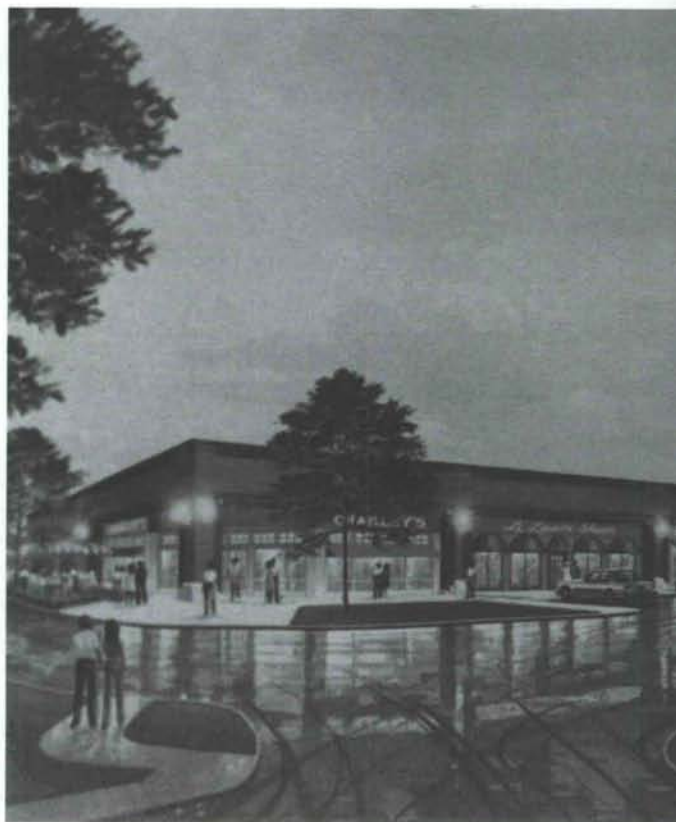
### Trammell Crow: "Value for the Long Term"

From its beginning in Texas forty years ago, Trammell Crow Company has become one of the most successful developers of office buildings, shopping centers and industrial parks in the U.S. today, with over 60 companies nationwide and 7 billion dollars in assets.

Paul Silverman, Area Partner for the New Mexico/West Texas division, characterizes the company as investment builders who develop and manage properties to hold for the long term rather than resale. "We consider ourselves a marketing company more than a real estate company," Silverman says. "We're not looking for cheapest, but most efficient, functional and pleasant; to provide the greatest value for the long term."

He points to the company's first warehouse property at 101 Cole Street in Dallas, which Trammell Crow built in 1948 and still owns, as an example. "Trammell installed windows, planted trees and put the docks behind the building," explains Silverman. "At the time, these things were unheard of."

Trammell Crow first attracted national attention for the Embarcadero development in San Francisco, designed in association with John Portman. The project used an atrium design which Portman had previously reintroduced into the lexicon of commercial buildings, but more importantly, began Trammell Crow's involvement with "big name" architecture. The affair was consummated in the mid 1980s with Trammell Crow Center (formerly LTV Center) in Dallas, designed by Skidmore Owings and Merrill, which Silverman calls the company's "first building with great architecture."





**The New Mexico Market**

In New Mexico, Trammell Crow is best known for First Interstate Plaza in Santa Fe (designed in two phases by Dorman Nelson & Breen Architects and McHugh Lloyd & Associates) and Sunwest Center in Roswell (remodel designed by Alley Connell Strain & Associates), which was honored by *New Mexico Business Journal* as one of the Ten Best Buildings of 1986 in New Mexico.

Other prominent projects in Albuquerque include the Shops at Mountain Run and Four Hills Village shopping centers designed by De La Torre/Rainhart, and the industrial warehouse development at 8333 Washington designed by SW Design Collaborative in association with contractor Jordan & Noble of El Paso, which Silverman characterizes as combining good local design talent with tilt-wall construction expertise. "El Paso is light-years in front of industrial development in Albuquerque," he says frankly.

Silverman believes in the value of good design. "But in building investment product" he says, "there has to be a blend of design and efficiency, with design acting as an additive element, not a negative. A good developer or client will make a good design firm a better one, and vice-versa. It's a symbiotic and synergistic relationship."

In most cases, project planning should be "a function of maximum flexibility while providing a minimum level of hard-dollar development," Silverman says. But to illustrate how

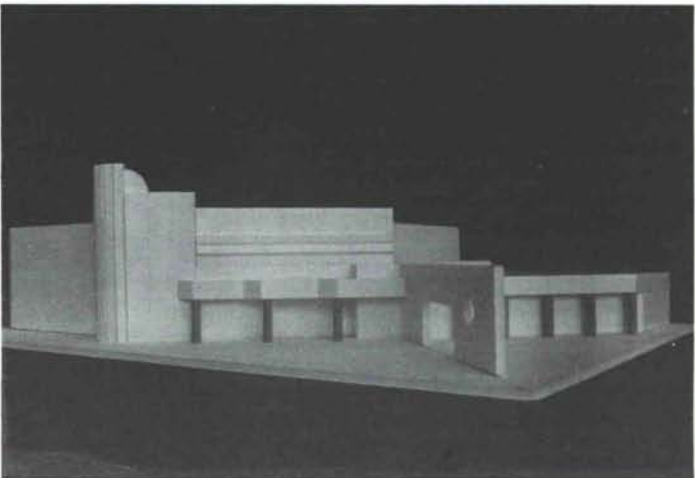
every market is different, he points to the Shops at Mountain Run, a high-end shopping center shell design with cast stone and brick details, originally developed without storefronts to provide maximum flexibility for retailers. After months, with occupancy lagging behind, Mike Dickson of Stevens Mallory Pearl & Campbell was hired to develop the storefront designs now in place. "Local retailers weren't capable of individual storefront design," noted Silverman.

**Planners Need Cooperation of Developers and Architects**

On the subject of large-scale development planning, Silverman observes that planners and designers frequently don't understand the market forces behind development. "You can't dictate to the marketplace what the marketplace wants," Silverman cautions. "The job of creating comprehensive [city] plans has been defaulted to the planners. It needs the input of market forces provided by the developers and the sense of aesthetics provided by the architects. In the case of Albuquerque, the loss of the Alvarado [Hotel] was probably worthwhile," he says, "since it raised consciousness."

Trammell Crow Company is currently constructing the first phase of Midtown Business Park, a 50-acre office park complex along the west frontage of Interstate 25 in Albuquerque, and finalizing design of the Southwest Region Communication Center for the Atchison Topeka & Santa Fe Railway, a state-of-the-art facility for communications technology to be located in Albuquerque's Journal Center.

*Below: The Shops at Mountain Run, Albuquerque, a rendering by Chuck Holt. Right top: Sunwest Center, Roswell. Right bottom: Model of the S. W. Region Communications Center for AT&SF Railway.*





# AIA'S COMMITTEE ON DESIGN PROVIDES DESIGN AWARDS JURORS

by Steven C. Yesner, AIA

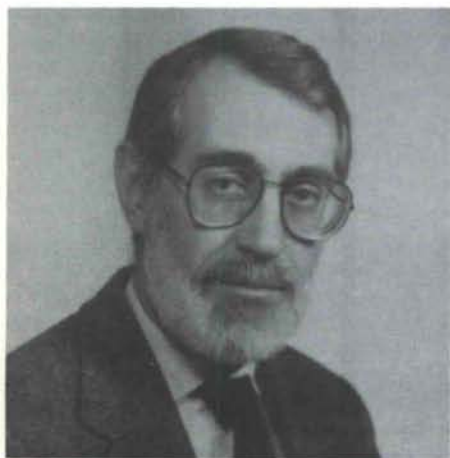
The American Institute of Architects/National Committee on Design was created in 1969 as an outgrowth of the Committee on Aesthetics formed in 1964. The purpose of the committee is to study the issues of design relative to continuity of the urban complex, the role a building plays in the city and in relationship to other buildings, and the maintenance of visual order in the human environment.

The committee is directed by an appointed chairperson and vice-chairperson, three steering group appointees, and a staff director, whose task is to chart the issues to be studied by the committee each year. An appointed commissioner serves as liaison between the committee and the AIA/National Board of Directors. This year's commissioner is Western Mountain Region Director, Jess Holmes, AIA, of Albuquerque.

This year, the New Mexico Society of Architects Design Awards will be juried by three members of the Awards Task Group. With this distinguished jury, representing a cosmopolitan and analytically trained point of view, NMSA expects the New Mexico architects will be enthusiastic about submitting their projects for review, exhibition and discussion. All submitted projects will be exhibited at the Design Conference.

## The Jury:

**LAURIE OLIN, ASLA**, is Partner and Principal of Hanna/Olin, Ltd. environmental design and planning. He has served on design award juries for the National AIA Design Awards, the National Waterfront Center Competition, the City Visions Competition for the Foundation of Architecture, and the Prince



*The distinguished jury, members of the Awards Task Group, are all from Pennsylvania. From left to right: Laurie Olin, ASLA; Peter Bohlin, FAIA; Charles Dagit, Jr., FAIA.*

The committee holds three general meetings each year, attended by the nearly 100 active (appointed) members of the committee, but the meetings are also open to the AIA's 53,000 members:

"Search for America," examining 18th, 19th and 20th century American building design, will be the subject of the next meeting to be held November 4-6 in Los Angeles, featuring lectures by Vincent Scully, Thomas Heinz, William Westfall and Frank Gehry.

"Synthesis: Architecture/Design/Craftsmanship" will be the subject of a special overseas conference to be held in Helsinki, September 4-7, 1989.

Other activities conducted by the Committee on Design include a Competitions Task Group which is attempting to define guidelines for government-sponsored, architect-developer team competitions, and an Awards Task Group which provides jurors for AIA component design competitions.

of Wales Prize for Urban Design, and is currently Landscape Architect Jury Chairperson for the American Academy in Rome. An accomplished author, lecturer and exhibitor, Mr. Olin has received many fellowships, as well as design awards from the American Society of Landscape Architects and from *Progressive Architecture*. He is also currently a trustee of the American Academy in Rome and a member of the Policy Panel for the National Endowment for the Arts.

**PETER BOHLIN, FAIA**, is Principal-in-Charge of Design for Bohlin Powell Larkin Cywinski Architects and a past chairperson of the Committee on Design. He has served as Design Critic at Carnegie Mellon University, Rensselaer Polytechnic Institute, the University of Pennsylvania, Kansas State University and the University of Maryland, where he was honored as Distinguished Professor of Architecture. His firm has been recognized with more than 75 regional and national design awards from the American Institute of Architects, U.S. Departments of Energy and HUD, the International Solar Energy Society, the Building Stone Institute and the American Wood Council. Mr. Bohlin is also a member of the Pennsylvania Society of Architectural Historians.



**CHARLES DAGIT, JR., FAIA**, is Partner-in-Charge of Dagit/Saylor architects. He has previously served the Committee on Design as a member of the Steering Group and as chairperson of the Awards Task Group. The recipient of several traveling fellowships, Mr. Dagit has been Adjunct Associate

Professor at the Temple University School of Architecture and Engineering, and Visiting Professor at the University of Pennsylvania Department of Architecture, and is currently Professor of Architecture at Drexel University. He is also an active civic leader.



AIA members may join the Committee on Design as Corresponding members for an annual fee of \$20.00. Corresponding members receive information on these conferences and the

committee's work. Contact Michael Cohn at AIA/National, 1735 New York Ave. NW, Washington DC, 02006, or call (202)626-7366.

## SPIRITED SANTERA TO HOST CONFERENCE SPOUSES

### A Visit with Monica Sosaya Halford

by Steven C. Yesner, AIA

Santa Fe artisan Monica Halford never lacks for inspiration. For the past 20 years, she has painted, sculpted and molded *retablos* (2-dimensional religious figures), *reredoses* (altar screens) with multiple *retablos* and *bultos* (3-dimensional and relief figures) of nearly every saint imaginable. And not just on boards or sheetmetal, but on windows, doors, walls, furniture, tiles and tapestries, even trees.

Ms. Halford will show her work and speak to the spouses and guests of the 1988 Santa Fe Design Conference attendees and exhibitors on Saturday, November 5.

#### The Making of a Saint Maker

Halford's New Mexican family heritage and upbringing in Santa Fe, like that of most Hispanic families, was rooted in traditional Catholic faith and devotion to the saints. "We grew up with *santos*," she says, "they were like part of the family."

Although she took lessons with Jozef Bakos, one of the famed "Cinco Pintores", while in high school, and later studied at the California College of Arts and Crafts, Halford did not set out to be a *santera*. But after a visiting friend asked to buy a *retablo* of San Pasqual she had made for her kitchen from childhood memories, she began sketching and studying early *retablos* in museums, churches and books, and developing her own style and techniques in earnest.

Today Halford's work receives major recognition in publications and exhibits devoted to American crafts, as well as private collections. Her *retablos* and needlepoint tapestries can be found in Constance Stapleton's book, *Crafts of America*, the Albuquerque Museum and Museum of New Mexico, the Immaculate Heart of Mary Seminary, area businesses and the annual Spanish Market in Santa Fe, where she has won prizes for her doors, paintings on tin, and reverse glass paintings.

She can talk at length and tell many anecdotes about the lives and significance of the saints she has researched. And friends who travel tell her new stories of saints from around the world.

"I always thought Santa Barbara was the patron saint of lightning and thunder; then I heard she was the patron saint of architects, too," relates Halford, whose husband is an architect. "It had something to do with a tower her father had built to



Monica Sosaya Halford with courtyard *retablo* at her Santa Fe studio. Photo by Marian Love.

imprison her, which was destroyed by lightning after her death, creating work for the architects. And Saint Thomas, the apostle, is always pictured with a scroll, which I now paint as a roll of blueprints.

Halford's *retablos* are known for their subtle colors reminiscent of antiques, and for their gentle humor and earthy beauty. She also collects *dichos* (parables) which she incorporates into the borders of her work. Says Halford, "I want my *retablos* to comfort those who buy them whether they believe in the saint or not."

A raffle of donated items, a luncheon and wine-and-cheese social are also scheduled.



# ARCHITECTURAL TOURS: SANTA FE STYLE

by Steven C. Yesner, AIA

Visits to building projects in Santa Fe supplement the talk and ideas of the Design Conference with concrete examples and the opportunity to enjoy the exquisite New Mexico Autumn in some of the most beautiful built environments the state can offer. Case study developments featured in this year's guided

tour of Santa Fe architecture include examples of recent housing, retail and educational projects which set standards for excellence in design, preserving community values and creating environments which distinctly enhance the community.



**LOS MIRADORES**, residential condominium compound, designed by McHugh Lloyd and Associates for William and Nancy Zeckendorf, developers, is located adjacent to the Santa Fe National Forest on 160 acres of natural reserve and recreational open space in the city's east side.

The project received two Grand Awards at the 1985 Pacific Coast Builders Conference in San Francisco and an Honor Award from the New Mexico Society of Architects in 1986, and

has been featured in *Designers West* and *New Mexico Architecture*.

Distinctive features of Los Miradores include village-like housing clusters, internalized parking courts and security systems, private garden courtyards, spectacular mountain views, historical styling and hand-hewn woodwork. In addition to a swimming pool and tennis courts, residents also enjoy access to concerts, lectures, films and other activities at neighboring St. John's College.



**SANTA FE COMMUNITY COLLEGE**, designed by Arrison Greer, Inc. for the SFCC Governing Board, is located on a 166-acre campus, donated by the Rancho Viejo Partnership, developers, in the city's growing south side.

Phase I construction, consisting of initial site development and a pair of L-shaped core buildings surrounding a southwestern courtyard, was funded through a combination of state legislative appropriations and local bond issue elections. An opening ceremony was held on August 21 of this year. Phase II construction, approved by a second bond issue election on Sept. 1, will provide an additional classroom and occupational lab wing, a performing arts center, a physical education complex, additional faculty offices and hospitality wing, plus additional site development.

The campus design is characterized by a southwest-facing entranceway, an extensively landscaped courtyard (roughly the same size as Santa Fe's downtown plaza), covered connecting walkways featuring massive carved beams and column capitals, stepped parapet walls, natural daylighting, bancos, and artwork displays throughout the facility. The school has been operating in temporary quarters at the Valdez Industrial Park since 1983.

The designers and developers of the projects will accompany the tours to discuss their aesthetic, functional, and financial details, and the architect/developer/owner relationships that brought them to fruition.



**SANBUSCO MARKET CENTER**, historic renovation and retail complex, designed by DeWindt Henry and Associates for Schepps/New Mexico Development Corporation, is located on 5 acres at the north end of the AT&SF rail-road yards adjacent to the Westside-Guadalupe historic district. It encompasses the former Santa Fe Builders Supply company and adjoining Butler-Foley warehouse buildings.

The project received an Award of Excellence in 1986 from the Old Santa Fe Association, the Governor's Award of Honor for Historic Preservation, and an Honor Award from the Santa Fe Chapter of the Association of General Contractors and American Institute of Architects in 1987, and has been featured in *New Mexico Business Journal*. It is currently being considered for a national preservation award.

The sensitively restored facades reflect the four primary architectural styles which spanned the development of the railroad era in New Mexico: the initial structure built in 1880 in the period's Commercial Railroad Style, a 1921 addition in the Western Storefront Style, numerous additions throughout the 1930s in a simplified Spanish Pueblo Style, and a separate Territorial Style structure built in 1935. Other features include a retail mall created from the original drive-thru hall once used for freight transfer, exposed original construction, warehouse sheds readapted as covered parking, and a sculpture-enhanced entrance court. Sanbusco is listed in the National Register of Historic Places and the New Mexico Registers of Historic Places and Cultural Properties.



## PUBLIC INTERIORS FOR SPRINGER SQUARE

### PERSPECTIVES PERSPECTIVES PERSPECTIVES

PROVIDING CREATIVE BUSINESS INTERIORS FOR OVER 10 YEARS

COMPREHENSIVE INTERIOR DESIGN SERVICES  
SPACE PLANNING • SPECIFICATION • FURNISHINGS

CATHY A. MOORE ASID

ALBUQUERQUE 242-4944

## ESTIMATORS... Who Needs 'Em!

Architects — Engineers — Developers  
Owners — Banks — Insurance Companies  
The Government — The Army — The Navy  
THE CONSTRUCTION INDUSTRY

### Construction Cost Management

- Conceptual estimates
- Detail estimates
- Change order evaluation
- Disbursement supervision
- Insurable values
- C.A.C.E.S.

2413 NORTH MAIN • FORT WORTH, TEXAS 76106  
(817) 625-4271 • FAX (817) 625-0920

*Certified Professional Estimators*

*With Your Imagination  
We Can Create  
Concrete Structures of  
Distinction*



**Ferreri Concrete Structures, INC.**

2340 Alamo SE • Suite 106  
Albuquerque, New Mexico 87106  
(505) 247-0391

## CORONADO WRECKING & SALVAGE CO.

(505) 877-2821

*"25 years experience"*



### Southwest Abatement

Asbestos Removal  
(505) 873-2967

*"... In partnership working together  
for your protection"*

4200 Broadway, SE, Albuquerque, NM 87102

## First Rate Architectural Photography

- on time
- on budget
- no hassles

Call me today to look at my book and to find  
out how easy and inexpensive quality can be.

**BOB BRAZELL PHOTOGRAPHY**  
303/349-5202      800/445-1036



**SOLICO**

(505) 345-1633

5119 EDITH BLVD, ALBUQUERQUE, NM 87107

PRODUCTS AND SERVICES UTILIZING  
**VERMICULITE AND PERLITE**  
FOR U.L. FIRE RATED BUILDINGS

- MONOKOTE FIREPROOFING
- INSULATING CEMENTITIOUS ROOF DECKS
- GRANULAR LOOSE FILL INSULATION
- LIGHTWEIGHT AGGREGATES



## AGP

*Home of the  
Concrete Giant!*

**ALBUQUERQUE GRAVEL PRODUCTS COMPANY**

*DEDICATED TO QUALITY  
AND SERVICE*

100 Iron Avenue, SE  
P.O. Box 829

Tel. (505) 242-5265  
Albuquerque, NM 87103





EL CASTILLO  
Chichen Itza, Yucatan

### EL CASTILLO

*El Castillo, with its four grand stairways, is the largest of seven known pyramids at Chichen Itza. The structure is typical of the Classic Maya period but the exterior details are Toltec.*



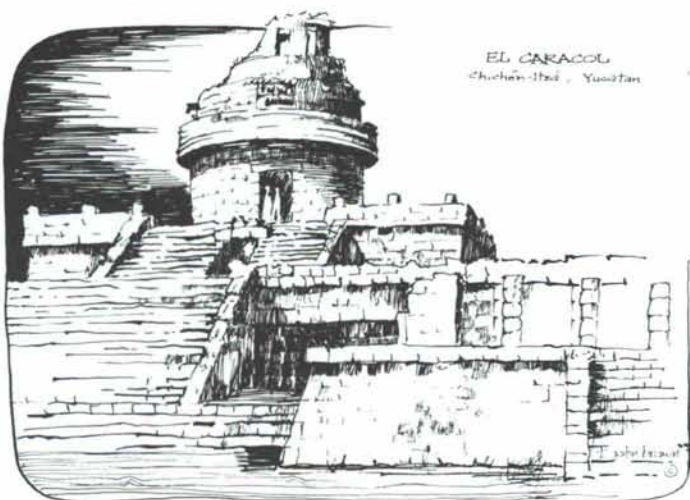
DETAIL  
Temple of the Warriors  
Chichen Itza

Chaac (rain god) mask  
with stylized eyes, ears,  
and teeth, together  
with a curved proboscis.

John Brown ©

### MISCELLANEOUS DRAWINGS OF EL CARACOL DETAIL AND CHAAC MASK

*The Chaac mask and the stone moulding detail are common design elements often found on Maya buildings of the Classic period.*



EL CARACOL  
Chichen Itza, Yucatan

### EL CARACOL

*The two superimposed terraces of El Caracol are Classic Maya structures that support a 50 foot high round tower which may have been used as an observatory.*

Looking down on the Temple of the Thousand Columns, I estimated over a hundred stone pillars still in place. These held roof beams that enabled the architect to construct large covered spaces instead of the traditional narrow rooms with corbeled arch ceilings. Those artisans were as adept with sculptural details as they were with enormous architectural scale. Particularly interesting was the feathered snake design seen in the Temple of the Warriors that became an integral part of every structure gracing stair bannisters, giant columns and ball courts.

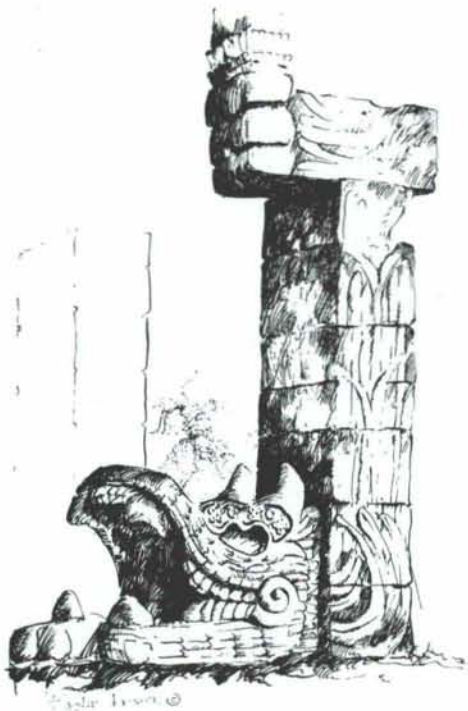
### February 13

Chichen Itza is the best known of all the Mexican Maya ruins and is one of the few Mesoamerican centers whose name has come down to us from the Maya. It means "The Mouth of the Well of the Itza." On this site there is a sacred well called a cenote, a hole in the ground 285 feet in diameter with brackish looking water 60 feet below the rim. Archaeologists have excavated its bottom and found skulls and skeletal remains of 13 males and 8 females all of whom were sacrificial victims. The Maya priests were known to throw "a chosen one" into the water below to appease their Gods. If the chosen one lived through the night they were removed and allowed to live because they had communicated with the Gods.

### February 19

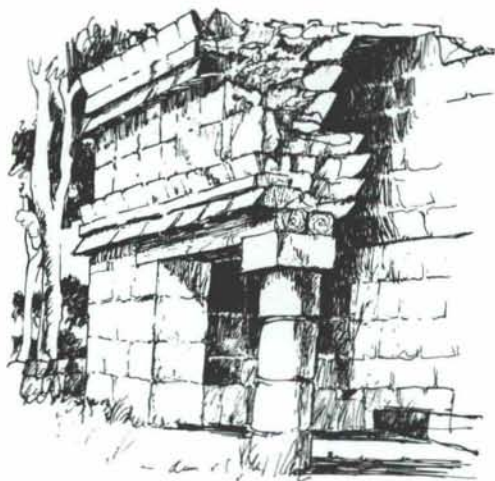
Sayil, Labna and Xlapak are part of a group of small area sites radiating from Uxmal, a large center of Late Classic style. Sayil has a huge palace with three stories and over 100 rooms. It's by far one of the largest buildings in the Maya world. It was built about A.D. 850. This building complex is the final stage of a slow process of construction. It began with a single story building and ended with three stories of collected Puuc architec-





### FEATHERED SERPENT COLUMN

Traces of red coloring in the serpent's open jaws are still visible and suggest that these snake columns were multi-hued in resplendent color. It is believed by archeologists that these once multicolored columns served as a background for human sacrifices.



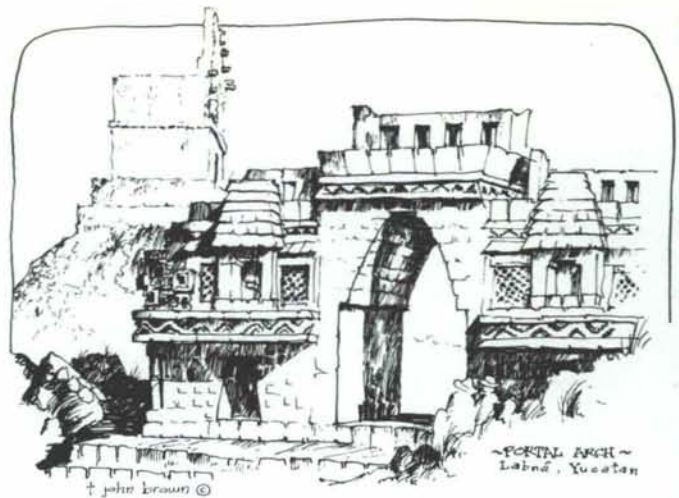
STEAM BATH  
— John Brown

A small building of Puuc design built for secular rather than religious purposes. Note the construction of the corbeled arch.

— John Brown

### STEAM BATH

The veneer type corbeled arch is shown very clearly in this steam bath. Wood lintels supported the walls above the columns and a smooth faced stone vault formed the ceiling. When the lintels rotted away, the roofs collapsed.



### PORTAL ARCH - LABNA

The sculptors carved a likeness of their thatched roof houses on both sides of this arch.

tural forms. Large Chaac masks are found on the facades of all these buildings.

The ruins of Xlapak were in such a state of ill repair that they didn't charge an entrance fee. There was one reconstructed building with a very plain lower facade nestled among the balsa trees. The huge geometric Chac masks are again the central design of the upper wall with geometric shapes between them. There are so many similarities in architectural details between all these Puuc sites that I wonder if maybe the same designer didn't originate all of them. A more probable idea is that the designs were of such importance to this culture that they were passed around.

An interesting detail of the huge palaces at Labna and Kabah is that most of the doorways had stone lintels instead of chicle wood, therefore preventing the roof masses above them from collapsing. All the walls are constructed of finely finished stones, exquisite in their execution and placement. One can actually see all the pieces of carved blocks put together to make wall details such as the stylized rain god masks so typical of this area.

### February 20

The villages of the Yucatan still have many thatched roof houses constructed of wattle and daub walls. With their stone fences they look much the same as the Maya structures a thousand years ago. These houses have curved end walls with a door on each flat side. The ancient Maya slept on wooden beds or reeds but now all sleep in hammocks which were introduced to the new world by the Spaniards. Two of these houses are carved into bold relief on the arch at Labna.

Between Uxmal and Kabah there is an ancient "sacbe" a raised causeway. One passes through a towering stone ceremonial arch at Kabah to begin his journey to Uxmal which was the center of the Puuc civilization 1000 years ago. Nature has been good to these ruins as the details of the wall surfaces exist almost as if they were carved yesterday.





TEMPLE OF THE DIVING GOD  
AND THE CASTILLO  
Tulum - Quintana Roo, Mexico

† John Brown ©

### TEMPLE OF DIVING GOD AND EL CASTILLO

The Temple of the Diving God was constructed with outward leaning walls which balanced with the slope of the interior vaulted ceiling.

The curved surfaces of a conical-shaped temple at Uxmal called Pyramid of the Magician is unique, casting soft shadows throughout the day. The architecture of Uxmal becomes monumental, getting away from its dependence on nature. The plazas are much more spacious and are usually surrounded by large wall surfaces highly decorated. The total complex was built on a grand scale.

At Kabah, there were stylized masks covering the entire face of the Codz-Poop Temple. To enter, certain smaller doorways one had to step on a monster's large hook nose. The snouts have a form of a rolled up mat, therefore the name Codz- Poop (rolled up mat). The small indentations in the base of each Chaac nose were to hold burning oil, illuminating the faces at night. It must have been a strangely moving sight.

### February 22

The ruins of Tulum are dominantly sited on the crest of a cliff overlooking the sea. Its once colorful stucco walls were constructed with a negative batter sloping out as they rose. This was one of the few Maya sites still inhabited when the Spaniards first arrived to the Americas.

The architecture of the Maya was to be viewed from the outside much as Greek buildings were to be seen. They used corbeled arches and vaults as a tool to give them an open space within a core of plaster and rubble fill. The corbel arch resembled very closely the shape of the roof of the Maya house. Their buildings were very detailed but thoughtfully designed so the viewer could see it at any angle. At Uxmal, one wing of the quadrangle was lower than the other three sides so that the whole complex could be viewed as a complete unit.

In the end, the Post Classic period saw a rise in armed conflict that greatly influenced the sitting and configurations of their civic architecture. The population centers were built defensively on strategic sites similar to the one called Zaculeu in Guatemala. The grade sloped steeply away from the site on three sides and the remaining side was a narrow neck of land, easily defendable. These Post Classic sites were much less decorated and lacked the organization buildings as those constructed during the classical period.



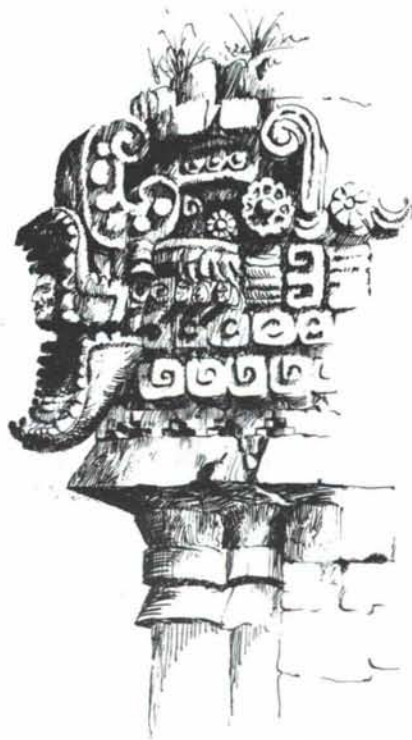
~ TULUM ~

QUINTANA ROO, MEXICO

† John Brown ©

### TULUM - VIEW FROM OCEAN

Maya seagoing traders brought Gods to Tulum from other parts of Central America. This site was still occupied when the Spaniards first landed on this shore.



† John Brown ©

### CORNER DETAIL OF SERPENTS HEAD - LABNA

The jaws of a supernatural open-mouthed serpent hold a finely carved human head. This is a symbol of Maya art that occurs at various sites in the Yucatan.



# Enchanting

## SLUMP BLOCK



Sierra  
Junior High  
Las Cruces,  
New Mexico

The enchanting spirit of the southwest inspired the Architects to select adobe Slump Block to achieve the character of ancient adobe's warmth and permanence.

The Architectural Firm of Alley and Associates selected Slump Block to blend with the southwestern flavor of the surrounding area. Wooten General Contractors and the Garcia Erecting Company utilized these 4x4x16 concrete masonry Slump Block units to perform as a brick veneer.

Slump Block is made from natural and manufactured aggregate, sand, limestone, gravel, cement and color. Combine the reliability of masonry and the old world appeal of ancient adobe for a unique structure that is truly enchanting.



## SPECTRA- GLAZE® CMU

Middle School  
& P.E. Building  
Hagerman,  
New Mexico

The Architectural Firm of Alley, Connell, Strain & Associates of Roswell chose the vibrant color of Deep Leaf Green for the accent panels on this middle school project. It was also used in the locker and shower areas for its durability and low maintenance qualities.

They added a physical education facility one year later and chose Deep Leaf Green Spectra-Glaze® units again to blend with the existing structure and complement the stucco exposed aggregate finish. Spectra-Glaze® blocks function as an integral part of the structure.

For an enchanting color that gives you proven performance and durability, specify Spectra-Glaze® block.

LOUISIANA  
CONCRETE

FEATHERLITE

*Builders*  
**BLOCK Co.**

Builders Block Co.  
P. O. Drawer FF, Las Cruces, NM 88004  
(505) 524-3633  
P. O. Box 1633, Roswell, NM 88201  
(505) 622-1321





### ZACULEU

*This town was occupied until the Spanish conquests in 1525. Kaibil Balan and his warriors held the city through several months of ruthless attack.*

In looking back over these past months of exploration of ancient Maya architecture and art, I find the plaza a focal point at every site. The Maya appeared to have focused on these large open areas as a hub of their civilization continuously constructing new buildings around them as a fundamental first step of social order.

It has been my pleasure to describe to you many of the details of Maya architecture. We will never know why the inhabitants of these civic complexes abandoned their temples, plazas and splendid art work. Their legacy grows as archaeologists continuously analyze and open to the public the remains of a highly advanced culture relatively unknown a hundred years ago.



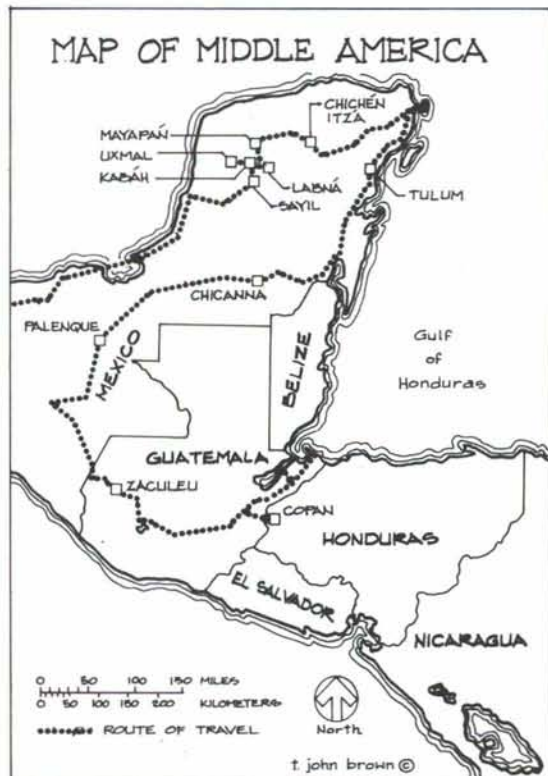
CORNER DETAIL OF TEMPLE WALL  
Chicanna, Campeche

**CORNER DETAIL OF TEMPLE WALL OF CHICANNA**  
*Long hooked noses and intricate stone mosaics were concentrated on the upper portions of the walls of most Puuc-style buildings.*

Terrance Brown is an architect employed by Louis L. Weller Architects P.C. in Albuquerque, New Mexico. Originally from Montana, Brown received his degree in architecture from Texas Tech University in 1969. After graduation he entered the U.S. Army Corps of Engineers as an officer and served a tour of duty in Vietnam.

From 1971 to 1973 he explored Central and South America. Part of that time he worked for Argentina's foremost architect, Clorindo Testa, in Buenos Aires. During the next four years Brown served as student coordinator of a linguistic center Spanish school in Guatemala call Proyecto Linguistico Francisco Marroquin. He helped found two Spanish schools and prepared special training programs for the U.S. Peace Corps and senior professionals from various countries. Brown developed policies and procedures for counseling and cultural orientation to assist students in understanding Guatemala and Central America.

In 1977, Brown established his own architectural practice and construction company in Antigua, Guatemala which he successfully ran for four years. In 1981, Brown and his family left Guatemala where they had lived for eight years and began their exploration of the Maya ruins of Honduras, Guatemala and the Yucatan Peninsula of Mexico.





## form + function

southwestern, domestic, and imported lighting



wallsconce  
"sand hunter"

328 guadalupe st., santa fe, nm 87501  
(505) 984-8226

## FEEL THE DIFFERENCE.



### R4 WINDOWS

The difference is Heat Mirror™ transparent insulation built into Hurd aluminum-clad wood windows and patio doors. You can't see it, but you can feel it work. Heat Mirror reflects escaping heat back into your home in winter; rejects invading heat in summer.

Come see America's most beautiful wood window - Hurd. Come feel the difference that makes it twice as efficient as a standard double pane window. Our demonstration is proof. Your energy bill will be the payoff. You deserve to be Hurd.

 **Tortuga, Inc.**

3800 Hawkins Street N.E.  
Albuquerque, New Mexico 87109  
Telephone: (505) 345-2671

1808 2nd Street, Suite "I"  
Santa Fe, New Mexico 87501  
Telephone: (505) 982-2732

Heat Mirror is a trademark of Southwall Technologies.

# Professional Directory



**BRIDGERS & PAXTON**  
CONSULTING ENGINEERS, INC.

4600-C Montgomery Blvd., N.E.  
Albuquerque, New Mexico 87109  
(505) 883-4111

**MECHANICAL ENGINEERS**

**PROFESSIONAL**  
**CONSTRUCTION**  
**CONSULTANTS, Inc.**

**RICARDO A. BACA, P.E., C.P.E.**  
Cost Consulting Engineer

1116 Wyoming Ave.  
El Paso, Texas 79902  
915/533-1176

In New Mexico  
Call  
505/883-9686

**HN**

ARCHITECTS • ENGINEERS • CONSTRUCTORS

**COMMERCIAL • INDUSTRIAL**

**INSTITUTIONAL • GOVERNMENTAL**

6501 AMERICAS PARKWAY NE, Suite 700 ALBUQUERQUE, NM 87110 • (505) 889-4100

**Holmes & Narver**

**B**

**Boyle Engineering Corporation**

consulting engineers

Suite 600-E  
6400 Uptown Boulevard, N.E.  
Albuquerque, New Mexico 87110

505 / 883-7700



# ACS

## ARCHITECTS-CONNELL-STRAIN & ASSOCIATES

P. O. BOX 2106 ROSWELL, NEW MEXICO 88201 (505) 823-5700



4600 C MONTGOMERY BLVD NE  
ALBUQUERQUE, NM 87109  
505/883-8682

BRIDGERS & PAXTON CONSULTING ENGINEERS, INC.  
MECHANICAL ENGINEERING  
CHAVEZ-GRIEVES CONSULTING ENGINEERS, INC.  
CIVIL/STRUCTURAL ENGINEERING  
TIERRA DEL SOL ENGINEERING, INC.  
ELECTRICAL ENGINEERING

(505) 265-5823

## Randy Holt & Associates, Inc.

### CONSULTING ENGINEERS

RANDY HOLT, P.E.  
PRESIDENT

7920 MOUNTAIN ROAD, N.E.  
ALBUQUERQUE, NEW MEXICO 87110



/ CONSULTING ENGINEERS, INC.

VICTOR J. CHAVEZ  
DAVID H. GRIEVES

4600 Montgomery NE  
Building C, Suite 101  
Albuquerque, NM 87109  
(505) 881-7376



## Sergent, Hauskins & Beckwith

### CONSULTING GEOTECHNICAL ENGINEERS

(505) 884-0950

4700 Lincoln Road, NE-Albuquerque, New Mexico 87109

PHOENIX • ALBUQUERQUE • SANTA FE • SALT LAKE CITY • EL PASO • TUCSON



STEVENS, MALLORY, PEARL & CAMPBELL, P.A.

ARCHITECTS  
115 AMHERST DRIVE, S.E.  
ALBUQUERQUE, NEW MEXICO

505 255-8668  
87106



WEBB-LEONARD-VAUGHAN  
ARCHITECT-ENGINEER  
3700 COORS ROAD N.W.  
ALBUQ., N.M. 87120

(505) 831-0434

de la torre • rainhart pa  
architects aid

two woodward center 700 lomas ne • suite 200  
albuquerque, nm 87102 • 505 842 9500

# BPLW

Architects & Engineers, Inc.



(505) 881-2759

American Financial Center #5  
Suite 400  
2400 Louisiana Blvd. NE  
Albuquerque, New Mexico 87110

*Designing to Shape the Future*



# ANDREWS, ASBURY & ROBERT, INC.

## CIVIL CONSULTING ENGINEERS

149 JACKSON ST. NE.  
ALBUQUERQUE, NEW MEXICO 87108  
(505) 265-6631





## Atlas Travel Service

**Vacation, Business  
and Group Travel**

First National Bank Building East, Suite 104  
Albuquerque, New Mexico 87108 (505) 265-5915

## Southwest Lath & Plaster Co., Inc.

**BUILDING NEW MEXICO  
FOR 30 YEARS**

**LATH  
PLASTER  
STUCCO**

**PHONE  
345-1176  
345-7293**

**5150-E EDITH N.E.  
ALBUQUERQUE, N.M. 87107**



**Less Fare, More Care.**

## America West Airlines

**For reservations, call your  
Travel Agent, or call America West at  
800-247-5692**



### new mexico architecture

nma

Published bi-monthly by New Mexico Society of Architects, American Institute of Architects, a non-profit organization. Editorial Correspondence should be addressed to John P. Conron, Box 935, Santa Fe, N.M. 87504. (505) 983-6948.

**Editorial Policy:** Opinions expressed in all signed articles are those of the author and do not necessarily represent the official position of the publishing organization.

*Additional copies of NMA available from John P. Conron, FAIA/FASID, P.O. Box 935, Santa Fe, N.M. 87504.*

**Change of address:** Notifications should be sent to New Mexico Architecture, Box 935, Santa Fe, N.M. 87504 (505) 983-6948 at least 45 days prior to effective date. Please send both old and new addresses.

**Subscriptions:** Write Circulation, New Mexico Architecture, Box 935, Santa Fe, N.M. 87504. Single Copy \$3.00. Yearly subscription \$15.00.

**Advertising:** Send requests for rates and information to Carleen Lazzell, Associate Editor/Advertising Director, 8515 Rio Grande Boulevard, N.W., Albuquerque, N.M. 87114, (505) 898-1391.

**INDEX OF FIRMS** who make possible the publication of NMA and the page upon which their message can be found:

Albuquerque Gravel Products Company	22
Alexander & Alexander	8
Aluminum Sales Corporation	8
America West Airlines	30
American Business Interiors	8
American Ready-Mix, Inc.	6
Atlas Travel Service	30
Bob Brazell Photography	22
Bradley General Contractors	31
Brekke Distributors	12
Builders Block/ Featherlite Corp.	26
Businessland	31
Clifton Construction, Inc.	8
Construction Cost Management	22
Coronado Wrecking and Southwest Abatement	22
Crego Block Co.	2
Crego Block Co.	32
Curtainwall Window Limited	4
Davis & Associates, Inc.	13
Elco Distributing	5
Ferreri Concrete Structures, Inc.	22
Form + Function	28
Holman's, Inc.	12
Jaynes Corporation	5
Keer's, Inc.	6
Kinney Brick Company	13
Kitts Enterprises, Inc.	8
Klinger Constructors, Inc.	4
Kohler	Insert
Pella Rio Grande, Inc.	4
Perspectives	21
Plant Designs	31
Rocky Mountain Stone Company, Inc.	6
Roman Fountains	7
Santa Fe Lights	31
School Equipment, Inc.	5
Solico	22
Southwest Lath & Plaster Co., Inc.	30
Tiles de Santa Fe	31
Tortuga, Inc.	28

Printed by Hall-Poorbaugh Press, Inc., Roswell, New Mexico



## In need of a computer?

We carry the full line of IBM P/S 2's, the Apple MacIntosh and Compaq Computers.

# **BUSINESSLAND**

6601 Menaul NE  
Albuquerque, New Mexico 87110  
Phone 883-1833

A Different Kind of Computer Company!

*Watson's*

## **TILES DE SANTA FE HANDMADE FLOOR TILE**

17 YEARS IN SANTA FE

Call or write for free brochure or samples:  
P.O. Box 3767, Santa Fe, NM 87501-0767

**505-455-7466**

**BUY AMERICAN**



8300 Washington NE  
Albuquerque, NM 87113  
505-823-2800



**EXPERIENCE FOR HIRE**

INTERIOR LANDSCAPING DESIGN  
LEASING • MAINTENANCE



**plant designs**

The Professional Plant People  
**(505) 888-5821**



**SANTA FE  
LIGHTS**

ARCHITECTURAL  
LIGHTING FIXTURES  
IN SOUTHWEST  
ADOBE STYLE

INDOOR & OUTDOOR  
WALL, CEILING AND  
HANGING LIGHTS,  
CHANDELIERS &  
GARDEN LIGHTS

**SANTA FE LIGHTS**

Rt. 10, Box 88Y, Santa Fe, New Mexico 87501  
(505) 471-0076 / Brochure Available



PITTSBURGH CORNING  
**PCGLASSBLOCK®**  
PRODUCTS

Postmaster: Address Correction Requested  
New Mexico Architecture  
8515 Rio Grande Blvd., N.W.  
Albuquerque, NM 87114

Bulk Rate  
U.S. Postage  
PAID  
Roswell, N.M.  
Permit No. 47

052 03  
ZIMMERMAN LIBRARY  
UNM  
ALBUQUERQUE NM 87131

**...design with confidence**



## **Glass Block for the 80's**

Sandia Federal employed Solar Reflective PC GlassBlock® to create dramatic reflections and gain the advantage of light transmission. Contact Crego Block Company to learn how PC GlassBlock® windows, walls and partitions can provide both exceptional beauty and strength for your specific applications.

DISTRIBUTORS FOR THE STATE OF NEW MEXICO  
WAREHOUSED IN ALBUQUERQUE



# **CREGO BLOCK CO**

**6026 SECOND STREET NW 345-4451**

**MASONRY PRODUCTS FOR ALL BUILDING, LANDSCAPING AND DECORATING**