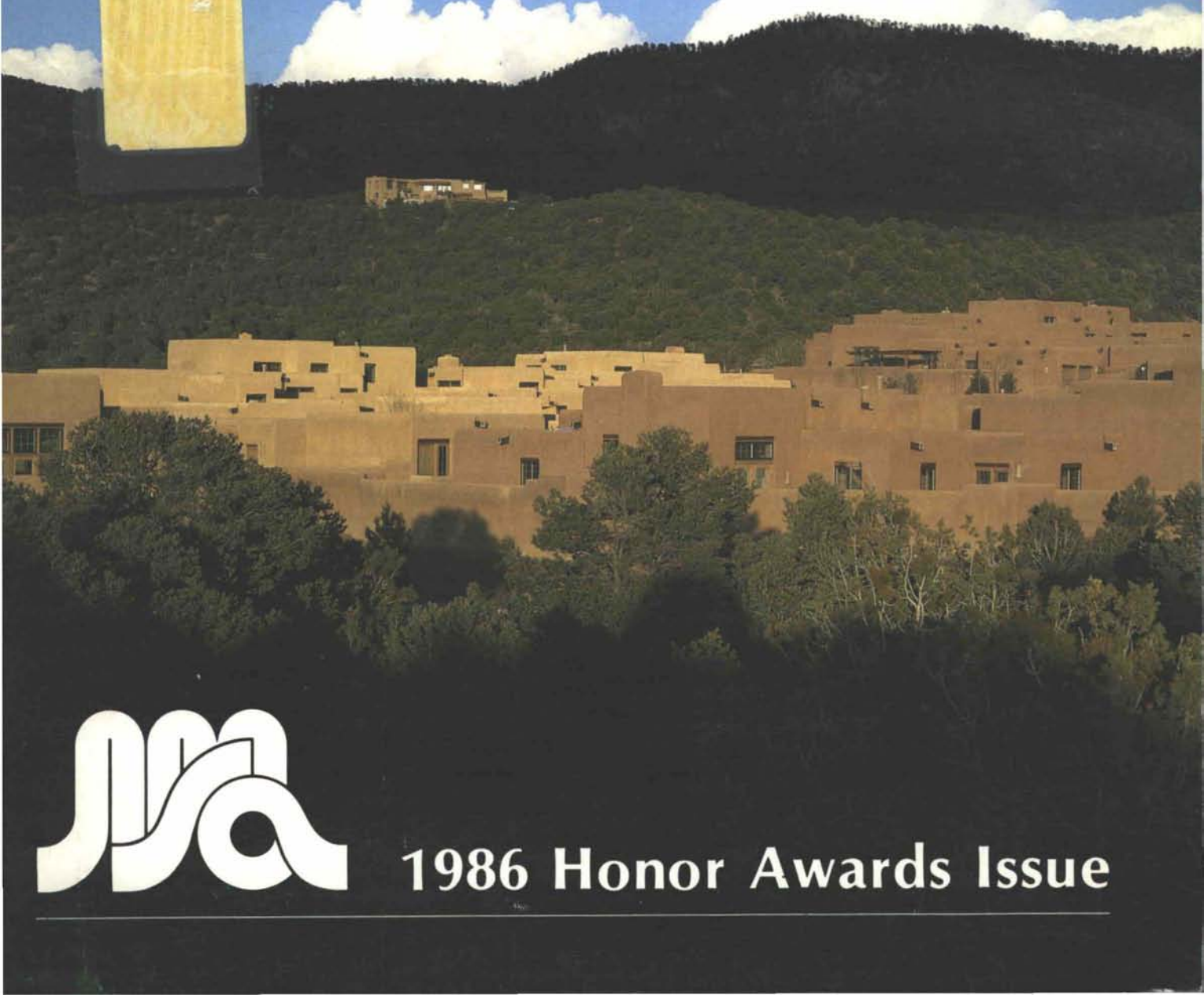
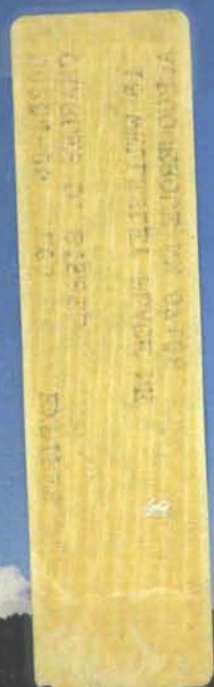


New Mexico ARCHITECTURE

MARCH/APRIL 1987

\$3.00



1986 Honor Awards Issue



A FAST, ECONOMICAL WAY TO A TWO-HOUR FIRE RATING.

Fire barriers between multiple dwelling units needn't be assembled with cook-book type instructions, paper-mache elements and lots of luck. By using concrete masonry walls, you can get a two-hour fire rating in a wall as slim as 3½" — weighing as little as 28 pounds per square foot — with the added plus of high STC ratings for occupant acoustical privacy.

And the masonry installation is simple, just one concrete block laid in mortar in a running bond on top of another concrete block. The work is all done by the same craftsman for the height of the wall and it is

easily inspected for potential deficiencies. This same ease of inspection is not available with the multi-phase, layered, paper-mache type of fire wall. (An 8 foot high fire wall built of standard 8" ASTM C-90 concrete block with type-N mortar can carry a concentric load of 5,800 pounds per lineal foot. Most fire-rated drywall walls are non-loadbearing.)

Come to think about it... have you ever seen a masonry wall burn? That is something to think about, the next time you build a stairwell or elevator shaft.



CREGO BLOCK CO.

P.O. BOX 6466
ALBUQUERQUE, N.M. 87197

6026 SECOND STREET, N.W.
(505) 345-4451



Courtesy of
Masonry Advisory Council



• vol. 28 no. 2 •

march-april 1987 • new mexico architecture

In this issue, are the design awards presented at last fall's New Mexico Society of Architects Annual Awards Banquet. In addition to the design awards, the Society was pleased and honored to be able to recognize the contributions made to its growth and development by one of its distinguished members. Kenneth S. Clark, FAIA was remembered and reminisced about by his friends, his associates and a few of his former employees. Kenneth was surprised and, we hope, pleased by the Banquet evening which was dedicated to him. Thank you for so much, Kenneth.

The cover of this issue of *NMA* is sponsored by McHugh Lloyd & Associates. Los Miradores Condominiums are located on Camino de Cruz Blanca in Santa Fe.

The New Mexico Society of Architects wins on the floor of the New Mexico Senate.

By a smart floor maneuver in the final five minutes of the 1987 Legislative Session, following a very short, rather amateurish, poorly reasoned plea by Senator Foreman from Dona Ana County to always hire Architects, rather than Interior Designers, NMSA effected the end of several peoples' dream. A quick motion to pass over an Interior Designers Licensing Act was made, and equally quickly approved by the President of the Senate, Lt. Gov. Stahl. The proponents for the bill were loud in protest, but were conveniently unheard by the President. The Act was effectively killed.

Members of the New Mexico Society of Architects had worked long and hard to kill the licensing act, but there is serious question as to whether they had the votes to kill it on the floor of the Senate. It was a very effective tactic, but the maneuver did not allow for a test of Senate sentiment.

The Interior Designers Act (a Title act, not a Practice act) had passed through the House and in the last couple of days of the legislative session, had passed through two Senate Committees to reach the floor for final action, a truly fantastic feat for any new licensing act. This feat was accomplished by the herculean efforts of a dedicated bunch of highly motivated Interior Designers. The more powerful architectural profession was almost overridden by the persuasive reasoning and charm of women's talent.

To many circumstances and the instance of time appears to have prevented prior inter-professional Society negotiation by which, perhaps, the support of the architectural profession could have been gained. (But were negotiations possible? A policy statement issued by AIA national headquarters in Washington opposed all Interior Designers legislation and, by that policy, instructed local AIA components to act in opposition to such legislation as was defeated on Saturday, March 20th.)

However, I must postulate that I am afraid that these same women will win round two.

I suggest that an interprofessional Society conference committee be formed to work out differences and to fill-in the gulf of dissension and anger that may have been created.

ASID and AIA must now draw together, because the Interior Designer, as an increasingly vital member of the design fraternity, will not fade away. (I may get fired for having written this editorial, but I believe that I speak the reality of tomorrow rather than the fantasy of yesterday.)

JPC, FAIA/FAISD

nma

☞ The Editor's Column	3
Book Review	9
Beyond the Limitations of Style	
Book Review by Robert W. Peters, AIA	
Santa Fe Style	
by Christine Mather and Sharon Woods	
NMA News	9
AIA National Convention in Orlando, June 19-22	
Plus: Fact, Future and Fantasy	
Local Condominiums Cited for Excellence	
Architectural Firm Adds Partner	
1986 Honor Awards	11
Valley Residence	12
Berent Groth, A.I.A.	
A Passive Solar Residence	13
Robert W. Peters, A.I.A.	
Treaster/Gray House	14
Antoine Predock, F.A.I.A.	
Los Miradores Condominiums	15
McHugh Lloyd and Assoc., P.A.	
The Beach Apartments	16
Antoine Predock, F.A.I.A.	
One Coronado Place	17
De la Torre & Rainhart, P.A., A.I.A.	
Belen High School Gymnasium	18
Edith Cherry/D. James See, A.I.A.	
Valencia Campus, UNM	19
Royston Hanemoto Alley and Abey	
Professional Directory	24
Advertiser's Index	26

(Cover — Los Miradores Condominiums, designed by McHugh Lloyd & Associates — © Robert Reck, Photographer)

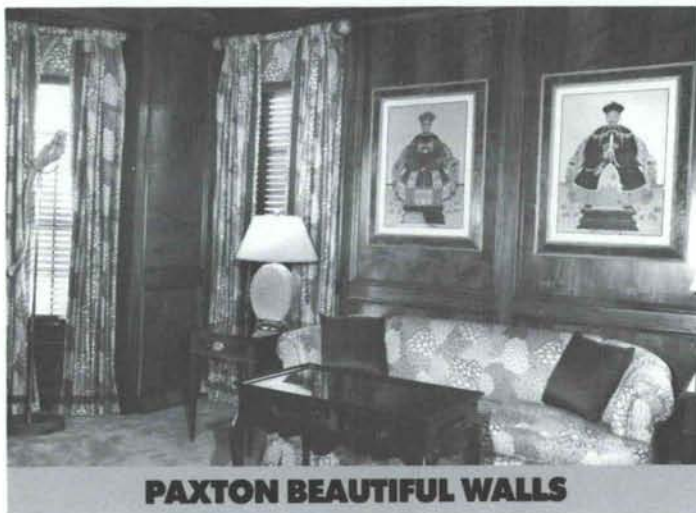
—Official Publication of the New Mexico Society of Architects, A.I.A.—

Society Officers

President—Randall L. Kilmer
 President-Elect—Jess Holmes
 Secretary—Bernabe Romero
 Director—Joe Browning
 Director—Beryl Durham
 Director—William Friemuth
 Director—Thomas E. Hummell
 Director—Wayne Lloyd
 Director—Roger B. Lujan
 Director—Brad Nesser
 Director—Steven N. Newby
 Director—Toby Pugh
 Exec. Dir.—John Seaver

New Mexico Architecture - Committee

John P. Conron, FAIA,—Editor
 Carleen Lazzell — Associate Editor/Advertising Director
 Van Dorn Hooker, FAIA — Chairman
 George Anselevicius, FAIA
 Marjorie Hooker, AIA
 Carolyn Kinsman, Designer
 Christopher Larsen, AIA
 Charles E. Nolan, Jr., AIA
 George C. Pearl, FAIA
 Glade F. Sperry, Jr., AIA
 V.B. Price — Former Editor "New Mexico Magazine"
 Don P. Schlegel, FAIA
 Nancy Weinman, AIA
 Christopher Wilson, Architectural Historian



PAXTON BEAUTIFUL WOODS

include the very finest stock and custom milled wood wall paneling: Tongue and groove, raised panels, hardwood, plywood, softwood, beaded ceiling, tambour and mouldings.

When you buy from Frank Paxton Lumber Company you invest in quality.

Paxton is the nation's largest distributor of high grade lumber available: fine hardwoods and cabinet softwoods of

various thicknesses, all graded and measured after careful kiln drying.

We also stock a complete line of plywood, veneers, abrasives, finishing materials, dowels, drawer sides, hardware, and more and specialize in custom paneling and millwork.

Frank Paxton Lumber Company. We've been setting standards of excellence in our industry since 1914, by pleasing professionals like you.

FRANK PAXTON LUMBER COMPANY

1909 Bellamah N.W.
Albuquerque, NM 87104
(505) 243-7891
1-800-432-9142 New Mexico
1-800-545-8386 Out of State

PAXTON
BEAUTIFUL WOODS

New Mexico's Largest Full-Service Electronic Security Firm

DESIGNING A PROJECT?... HAVE YOU FORGOTTEN THE SAFETY & SECURITY OF YOUR CLIENTS?...

*Put our 17 years of experience in New Mexico, (45 years nationally),
to work for you, safeguarding the lives and
property of your clients!*

- 24-Hour Central Station Monitoring
- Residential Burglary & Fire Alarm Systems
- Commercial & Industrial Intrusion Systems
- Commercial & Industrial Fire/Smoke Detection Systems
- Closed Circuit Television Systems
- Access Control & Automatic Locking Systems
- UL Certified Protection Insurance Discount

Two fully-staffed offices serving nearly 6,000 customers.

MAIN OFFICES

ALBUQUERQUE
3505 Carlisle, NE 87110
Tel: (505) 881-6400

SANTA FE

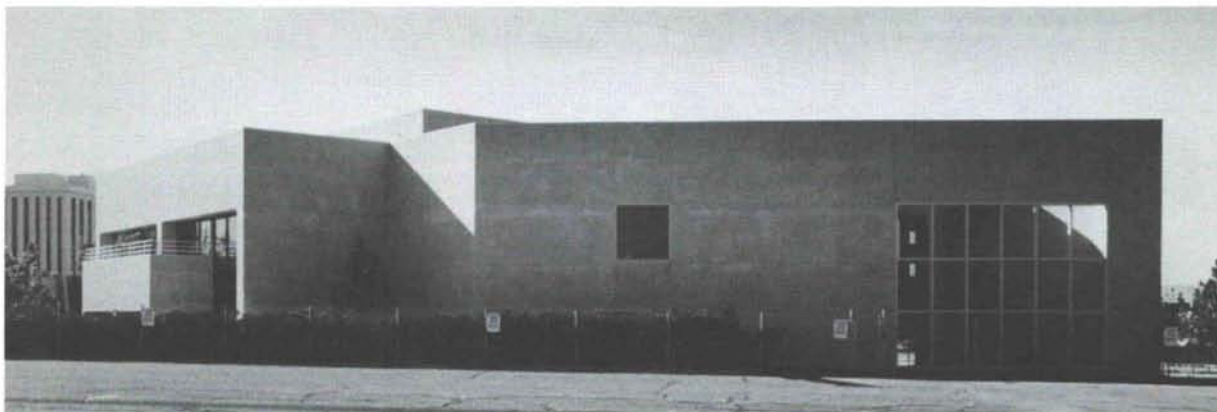
Calle Cinco Plaza
1500 Fifth Street, Suite 16 87501
Tel: (505) 984-8400



Security Alarm Systems, Inc.®



EXCLUSIVE DEALER FOR
DICTOGRAPH



The construction management team of Gerald A. Martin, Ltd. is proud to have been the General Contractor on this award winning building.

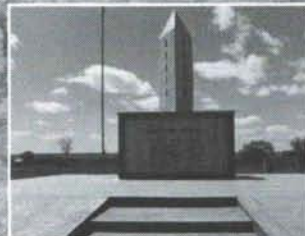
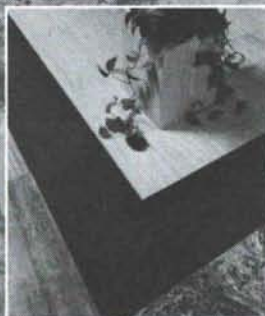
We congratulate the architectural firm of de la Torre-Rainhart for their outstanding design. Call Gerald A. Martin, Ltd. at 293-3560 for construction management expertise.

GERALD MARTIN GENERAL CONTRACTOR

Performance and Quality is our business

15 Tramway Road NE • Albuquerque, New Mexico 87122 • (505) 293-3560 • License #11805

for the finest...



...travertine and marble quarried and fabricated in New Mexico for

- flooring
- interior and exterior cladding
- feature panels
- furniture and accessories

NEW MEXICO TRAVERTINE



4741 Pan American Freeway NE
Albuquerque, NM 87109 Telephone 505 345 1327

CONGRATULATIONS TO ANTOINE PREDOCK

for the award-winning design of
THE BEACH APARTMENTS

in

Albuquerque

CARLSON HEATING AND AIR CONDITIONING, INC.

"Heating, Ventilating & Air Conditioning Contractors"

6805 Academy Parkway West, NE

Albuquerque, New Mexico 87109

(505) 345-2564

**Pella has
wood windows
and doors
for every
home and office.**

**NEW CONSTRUCTION
REMODEL / REPLACEMENT**

**"When Quality Counts"
Call**

Pella Rio Grande Inc.



Albuquerque	(505) 345-3501
Santa Fe	(505) 984-2210
El Paso	(915) 833-3066
NM Toll Free	1-800-227-5240



BUILDERS BLOCK

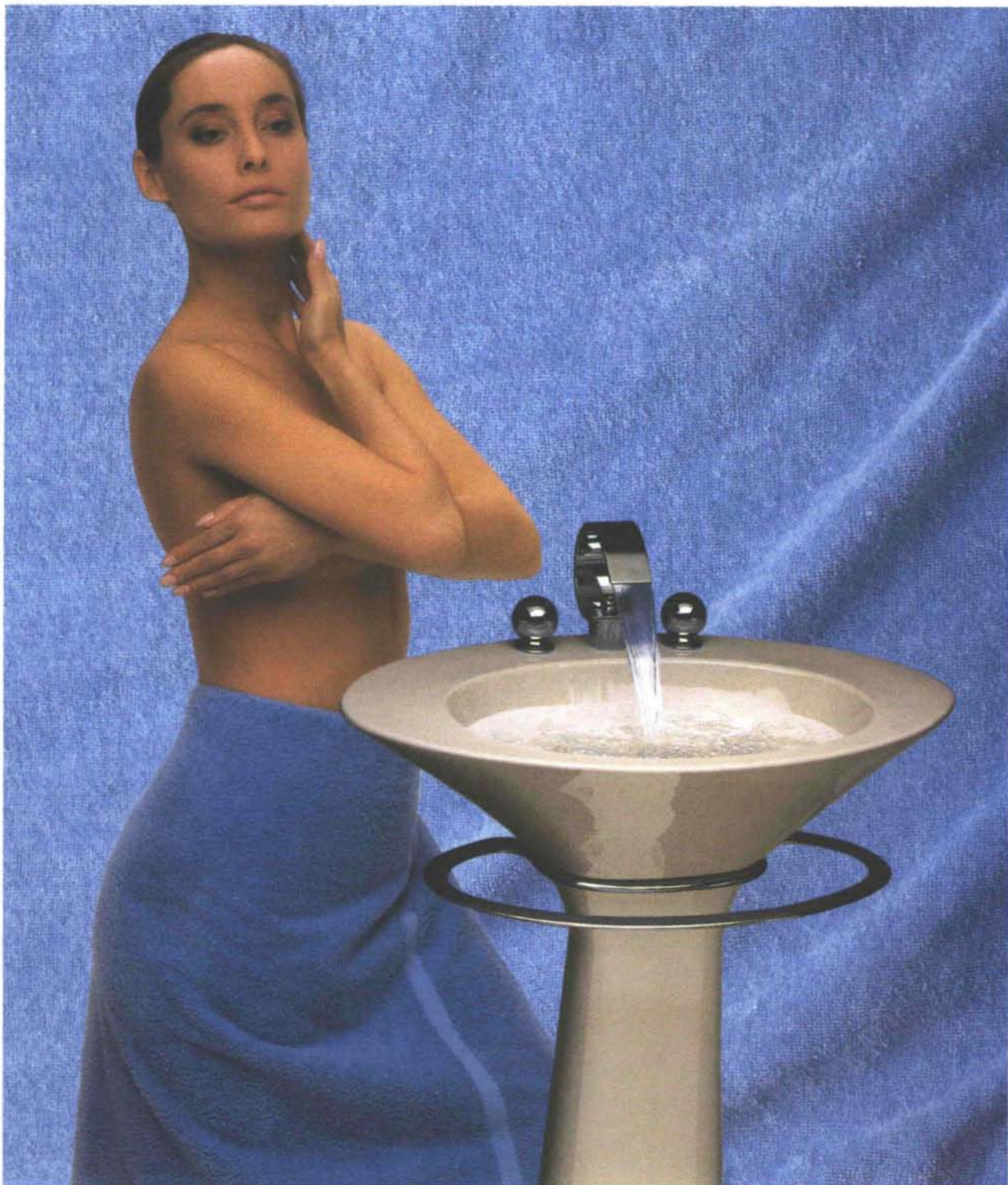
Members:
New Mexico Concrete
Masonry Association
National Concrete
Masonry Association

**Quality Concrete Masonry Products
and many allied building materials.
Serving New Mexico and West Texas
for over a quarter of a century.**

P.O. Box 1633
Roswell, NM 88201
505/622-1321

P.O. Drawer FF
Las Cruces, NM 88001
505/524-3633

Telephone
El Paso
915/532-9695

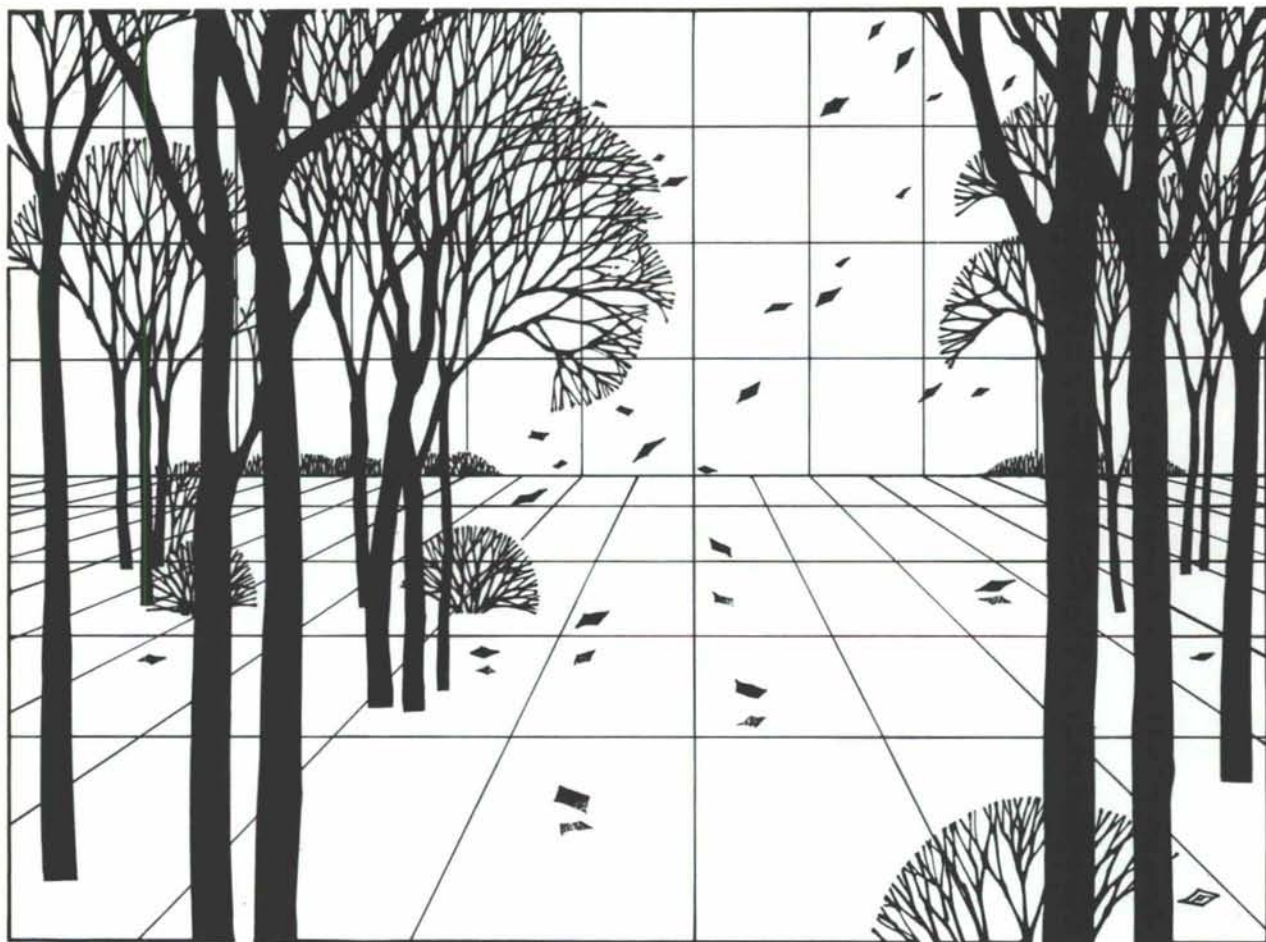


THE BOLD LOOK
OF **KOHLER**®

Surround yourself with its grace. And vitality. The Kohler Arabesque™ pedestal lavatory in Innocent Blush™. Circled by design with an artful towel bar in a choice of finishes. Use with the sculptured Cirrus™ sheetflow faucet. See the Yellow Pages for a Kohler Registered Showroom, or send \$3 to Kohler Co., Dept. 000, Kohler, Wisconsin 53044.

C6013 Copyright 1986 Kohler Co.

Expand your decorating horizons with **KOHLER** —
the leader in bold, imaginative plumbing products.



Come and See

THE
BOLD LOOK
OF
KOHLER

See for yourself how Kohler products can change your thinking about decorating or remodeling your bathroom, kitchen, or powder room.

in the showrooms at



PHC Supply Company

1000 Siler Park Road • Santa Fe, N.M. • 505-471-1811

Active

PLUMBING SUPPLY

1500 Candelaria N.E. • Albuquerque, N.M. • 505-345-8587

Showroom Hours
Weekdays 8:00-5:00
Saturdays 8:00-12:00

FEEL THE DIFFERENCE.



R4 WINDOWS



The difference is Heat Mirror™ transparent insulation built into Hurd aluminum-clad wood windows and patio doors. You can't see it, but you can feel it work. Heat Mirror reflects escaping heat back into your home in winter; rejects invading heat in summer.

Come see America's most beautiful wood window - Hurd. Come feel the difference that makes it twice as efficient as a standard double pane window. Our demonstration is proof. Your energy bill will be the payoff. You deserve to be Hurd.

Tortuga, Inc.

3800 Hawkins Street N.E.
Albuquerque, New Mexico 87109
Telephone: (505) 345-2671

1808 2nd Street, Suite "I"
Santa Fe, New Mexico 87501
Telephone: (505) 982-2732

TERRY EGBERT BUILDING Co., INC. OF SANTA FE

SINCE 1960

BUILDERS OF
AWARD WINNING
HOMES

CUSTOM HOMES
COMMERCIAL
METAL BUILDINGS
REMODELING

WHEN YOU KNOW WHO WE ARE,
YOU WON'T BUILD ANY OTHER WAY.

(505) 983-2094

821 SAN MATEO, SUITE E
SANTA FE, NEW MEXICO 87501
N.M. LICENSE #14191

KITTS ENTERPRISES INC.

5815 EDITH BOULEVARD, NE
ALBUQUERQUE, N.M. 87125

Alder, Ash, Basswood, Birch,
Aromatic Cedar, Spanish Cedar,
Cherry, Honduras Mahogany,
Phillipine Mahogany, Maple, Red
Oak, White Oak, Ponderosa Pine,
Sugar Pine, Poplar, Sassafras,
Walnut, and Willow.

Stairway Components, Adhesives,
and Abrasives.

Custom Milling and Hardware.

In Fact — Over 800 Items in Stock
for High Quality, Architectural,
Cabinet, Furniture, and Finish Work!

(505) 345-8135

New Mexico Toll Free:
1-800-432-6820

Outside New Mexico Toll Free:
1-800-545-6104

BUILD INTERIOR &



EXTERIOR WALLS

with initial savings that grow with age!

Spectra-Glaze II® The only glazed block with more than 3 decades of proven performance. Permanent, sanitary glazed finish. Practically no maintenance. Energy & insurance savings too. Meets Gov't specs. Wide range of color, texture, form, scale & pattern. © 4.4 Bu in SWEET'S.

NO REFURBISHING!
ASK FOR COST COMPARISONS
AND CASE HISTORIES . . .

FEATHERLITE BUILDING PRODUCTS CORP.,

Box 489, Lubbock, TX 79408 806 / 763-8202
FEATHERLITE BUILDING PRODUCTS, Box 9977, El Paso, TX 79990 915 / 859-9171
CREGO BLOCK CO., INC., 6026 2nd St. NW, Albuquerque, NM 87107 505 / 345-4451
BUILDERS BLOCK, Box 1633, Roswell, NM 88201 505 / 622-1321
BUILDERS BLOCK, Drawer FF, Las Cruces, NM 88001 505 / 525-3633

CONGRATULATIONS TO
CHERRY/SEE ARCHITECTS

AWARD WINNERS
FOR
BELEN HIGH SCHOOL GYMNASIUM

CONTRACTOR: SECOND PHASE



T.A. COLE & SON
general contractors

505-898-8698

10420 4th NW
PO Box 37109 Sta. D
Albuquerque, NM 87176

Insurance for the Design Professional
New Mexico's
Professional Engineers
and Architects

**Alexander
& Alexander**

**BONDING &
INSURANCE**

Since 1925

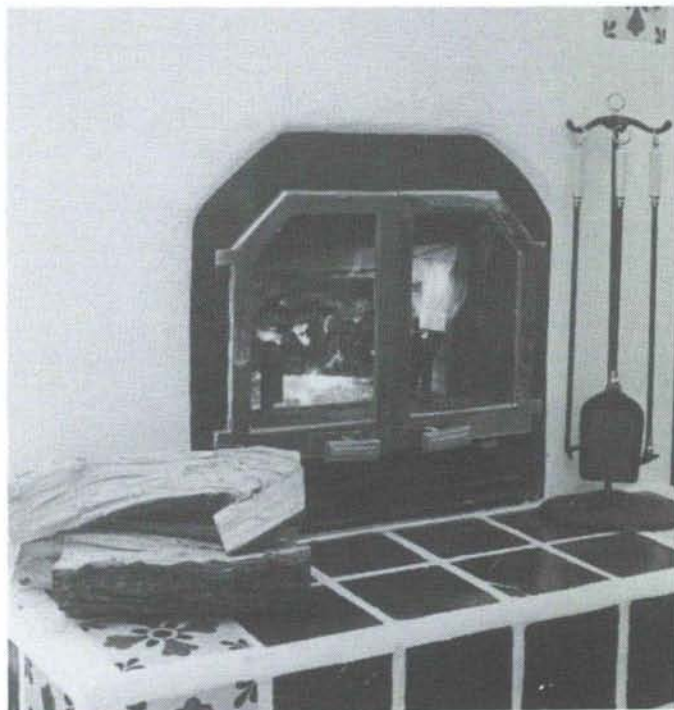
Call Bob Dean, Professional Liability Specialist

TELEPHONE (505) 883-8282
N.M. WATS 1-800-432-5882

Suite 200
6000 Uptown Blvd. NE

P.O. Box A
Albuquerque, N.M. 87103

**47,000 BTU's FROM A
ZERO-CLEARANCE FIREPLACE?
IT'S A BIS!**



- HEAT - 25,000-47,000 BTU / HR
- EFFICIENCY - 67%
- ELEGANT - fits any decor
- CLEAN GLASS - Brass or Black Doors
- CLEAN BURN - Meets Oregon DEQ Clean Air Standards for 1988
- EASY INSTALLATION
- UL LISTED
- AVAILABLE throughout New Mexico
- CALL US COLLECT for our 16 page color designer brochure and name of nearest dealer:

(505) 983-2977



1814 2nd St.
Santa Fe

THE FIREBIRD

Distributor for Security Chimney & BIS

BEYOND THE LIMITATIONS OF STYLE

Book Review by Robert W. Peters, AIA

SANTA FE STYLE

By Christine Mather and Sharon Woods
Rizzoli International Publications, New York,
1986

256 pages, 10" x 10"

Over 450 illustrations; approx. 220 in color;
\$35.00

A new kind of "coffee table book" has been appearing with increasing regularity since 1980; part Art book and part shopping guide, these publications began with *HIGH TECH: the Industrial Style and Source Book For the Home*, published by Clarkson Potter as "the guide to the new industrial revolution in design". Unlike previous design books, it introduced a product section, with names and addresses of manufacturers and distributors. The same publisher soon followed with the stylistic alter ego, *AMERICAN COUNTRY: A Style and Source Book*, which sought to "re-create what is best in our past as the exciting American style of today."

In rapid succession came *FRENCH STYLE* in 1982, *ENGLISH STYLE* in 1984, and something called *PIERRE DEUX'S FRENCH COUNTRY*. In 1985 the same publisher brought out *AMERICAN COUNTRY-WEST*, along with *ITALIAN STYLE* and a brightly colored confection called *CARIBBEAN STYLE*. Catching the wave, Harper & Row introduced *AMERICAN VIEW* in 1984, while Rizzoli, major publisher of art and architecture books, took the plunge with *FINLAND; LIVING DESIGN*. From other sources have come *JAPAN STYLE* and *FIFTIES STYLE*, among others.

All these books are square in format, 10" x 10" (they stack well), tend to be one inch thick and cost \$35.00. Now Rizzoli has given New Mexico its turn with *SAN-*

TA FE STYLE, edited by Christine Mather, formerly Curator of Spanish Colonial Art at the Museum of New Mexico, assisted by Sharon Woods.

Definitions of "style" in Webster's New World Dictionary range all the way from "Distinction, originality, etc. in artistic or literary expression" down to "the way in which anything is made or done; manner." A friend of mine, former Professor of Art History at Wellesley College, newly resident in Santa Fe, suggests that merchandising plays an increasing role in our perception of history with the reduced importance of academic history courses in favor of career courses. She believes that the desire for a sense of heritage, as well as style, is increasingly satisfied by shopping. And indeed one may "shop" the beautiful images of this book for a sense of the New Mexican heritage, and then turn to the source list to find out where to get it. The images presented are primarily about personal living; this is not a book about public style. Its components include shaping living environments and collecting objects to fill them. True to history, the divisions blur, as architectural elements such as windows, shutters and doors become "objects" set within thick adobe walls, just as surely as do baskets and pottery displayed against them.

Mather has stated that she finds Santa Fe style to be regional and the book includes houses in Taos, Corrales and even Scottsdale, with "Santa Fe Elsewhere" retail sources as far afield as New York and Florida. This seems analagous to Chacoan culture with its far flung settlements tenuously connected to the Chaco Canyon pueblos over miles of emptiness. But looking at and reading this book is a pleasure, nonetheless, and architects may especially enjoy coverage of the Nathaniel Owings house, John Gaw Meem's 1930's

Hollenbeck house, the Minge hacienda reconstruction, and the oddly upscaled Frank Lloyd Wright house, designed in 1941 for El Paso and built instead in the Santa Fe foothills in 1984, shown filled with Mexican colonial furniture!

Curiously missing, given the author's background, is any mention of the work of Alexander Girard. Little attention is paid to the subject of historic preservation or scholarly restoration, in favor of a more popular view of "artistic renovation and interpretation". Though the art of architecture is frequently evident, the Profession of Architecture is sporadically represented, as is perhaps fitting in a style "of the people", yet it is well shown in the section "A View To The Future", where New Mexico architects' experimentation with natural light and heat, site orientation, design as narrative and as theater, and other current concerns are in evidence in a series of residential projects, several of which have received NMSA Design Awards in recent years. As Mather states, "Despite efforts to codify certain aspects of Santa Fe style through zoning laws and community pressure, design has continued to grow and change, reflecting the fundamental adaptability of this vernacular form of building and its suitability to the American Southwest." Surely that is the best hope for this or any "style", that it is capable of evolving and changing beyond its present definitions.

Architectural photographer Robert Reck provided many of the handsome pictures. I note that his West Coast colleague, Tim Street-Porter, has just produced *FREESTYLE: The New Architecture and Interior Design from Los Angeles*. (The book isn't the square format either!) For my part, I look forward to a Southwest sequel - how about *TUCUMCARI STYLE?*


R.W.P.

**SOFTWARE TUTORIALS,
FEDERAL INTERVIEW
PROGRAMS HIGHLIGHT 1987
NEW PRODUCTS AND
TECHNOLOGY EXHIBIT AT
AIA NATIONAL
CONVENTION IN ORLANDO,
JUNE 19-22**

WASHINGTON, DC, February 20, 1987—New architectural products, services, and systems will be unveiled at the 1987 AIA National Convention and Design Exposition—"Architecture '87: Fact, Future + Fantasy," in Orlando, June 19-22, at the Orange County Convention/Civic Center.

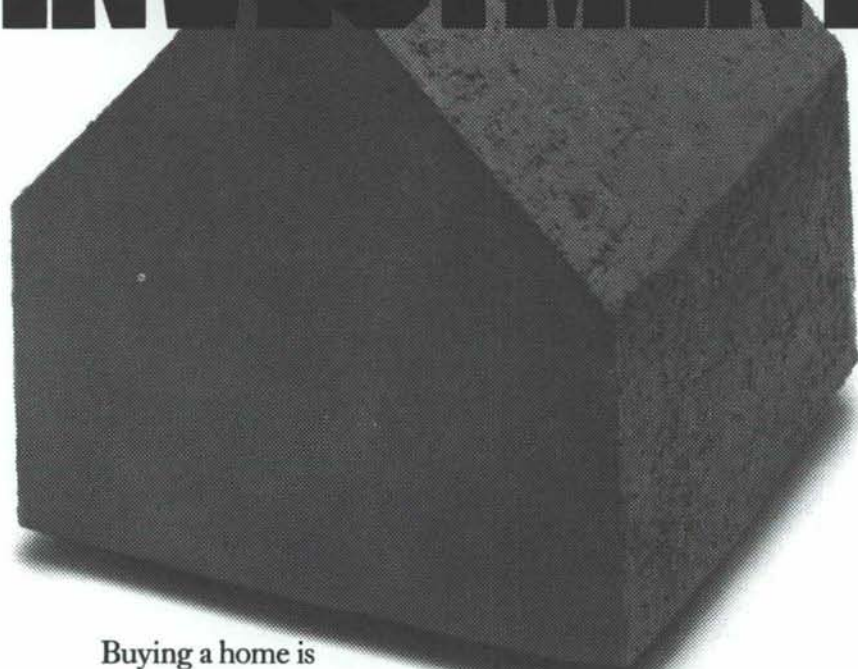
Renowned Japanese architect, Kenzo Tange, Hon. FAIA, the convention's honorary chairman, will preside at the Ex-

hibit '87's Grand Opening Ceremony Friday, June 19, at 11 A.M. The 1966 AIA Gold Medalist, Tange has been a towering figure in architecture for the last 40 years and is acclaimed for designing the Hiroshima Peace Center, the National Gymnasium for the Tokyo Olympics, master plan for Osaka's Expo '70, and Nigeria's new capital city, Abuja. Tange will hold a wide-ranging conversation on

Continued on page 21 

NMA NEWS

BRICK-THE CORNERSTONE OF A GREAT INVESTMENT.



Buying a home is one of the biggest investments you may ever make. That's why it pays to invest in brick. Brick requires less maintenance, at lower costs, than other materials. Its energy-efficiency saves you money. Its fire-resistance means lower insurance premiums. And its reputation for quality brings a higher resale value. Only brick gives you the best value when you move in—and when you move out. For more information about the benefits of brick, contact your local brick manufacturer or dealer today.



BUILD A BETTER LIFE WITH BRICK.

MASON CONTRACTORS ASSOCIATION OF NEW MEXICO



1986 Honor Awards

The New Mexico Society of Architects Awards Program is a highly respected tribute to architectural excellence. The selection is made on the basis of design excellence, sensitivity to human and functional needs and to the built environment. The purpose of this Awards Program is to encourage a high level of architectural design, recognize the clients and architects who have distinguished themselves by their accomplishments and to inform the public of the high architectural quality being brought to bear in the physical environment.



The 1986 Awards Jury was organized by Fred Shellabarger AIA, of Santa Fe. Other members included George Anselvicius FAIA, dean of the School of Architecture and Planning at the University of New Mexico, John Conron FAIA and Donna Quasthoff AIA of Santa Fe, and Gil Berry ASLA of Albuquerque. Their review of the competition entries was on an anonymous basis without knowledge of the identity of the entrants. The jury reviewed 44 entries, representing 26 firms, ranging from some of the largest in the State to one or two-person offices. Largest representation was from the Albuquerque Chapter, with approximately 68% of the entries, with the Santa Fe Chapter submitting 16%, landscape architecture firms 14%, and the Farmington Chapter with one entry or 2%. No entries were submitted by members of the Southern New Mexico Chapter.

The jury members were pleased with the number of entries, up from recent years, and the overall quality, but would encourage more entries from the Farmington and Southern Chapters. There were quite a number of school projects submitted, and that is represented in the awards, where two of the eight winners are schools. For the first time in several years, no awards were given for Historic Preservation or Remodeling/Restoration.

Of the eight Honor Awards given, five are in the Residential category, which the jury found to be clearly the most interesting. Of the eleven entries in the Commercial category, only one, an office building, was selected for an award. The majority of the Honor Awards went to small firms, who make up the bulk of the NMSA membership.



Photographs on this page were taken at the Annual Conference of the New Mexico Society of Architects, held in Santa Fe October 9-11, 1986. (Above) Dinner guests assemble for the Awards Banquet, held at the new Eldorado Hotel. (Above, right) New Mexico members of the College of Fellows of the American Institute of Architects are pictured during the Fellows reception preceding the Awards Banquet. L. to R.: John McHugh FAIA, John P. Conron FAIA, Don P. Schlegel FAIA, Kenneth Clark FAIA, Van Dorn Hooker FAIA and George Anselvicius FAIA. (Below, right) Winners of 1986 Honor Awards include, from l. to r.: Wayne Lloyd AIA, Guy R. Johns ASLA, D. James See AIA, Edith Cherry AIA, John McHugh FAIA, Berent Groth AIA and Robert W. Peters AIA.

Single Family Residential

Valley Residence

Albuquerque, New Mexico

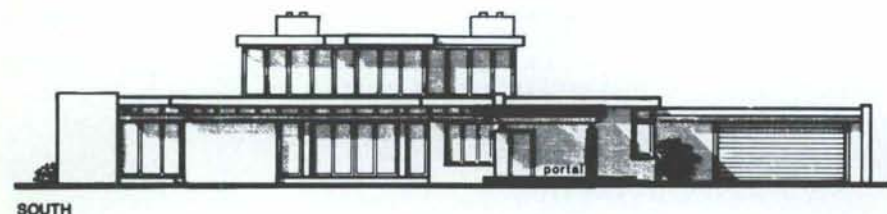
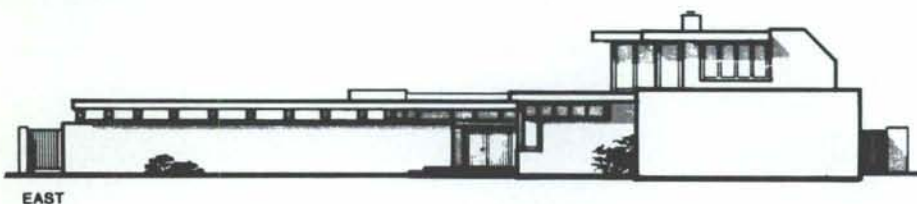
Honor Award
Berent Groth, A.I.A.
Architect

The house is pushed toward the east and north of the site to maximize usable outdoor space and is configured to define outdoor 'rooms' front and back.

An atrium provides vertical space and additional dining area. Atrium glass faces mostly south. A series of east-west masonry walls direct movement and emphasize the view west.

The portal is placed to give privacy to the private yard and be removed from sight in cold seasons. Bedrooms are designed as restful retreats from the light and openness of living areas. Floor tiles and fir ceilings are closely matched in color to set off the plaster walls and art collection.

The house has proven highly energy efficient by use of solid masonry walls and tiled concrete floors as heat sinks, atrium windows allowing exhaust of warm air, hot water radiant floor system, and evaporated cooling.



Valley Residence

Albuquerque, New Mexico

Client:
Arthur and Deborah Rosenberg

Architect:
Berent Groth, A.I.A.
Albuquerque, New Mexico

Contractor:
Laird Construction

Photography:
© Carla Breeze

Honor Award
Robert W. Peters, A.I.A.
Architect

Single Family Residential

A Passive Solar Residence
Tesuque, New Mexico



A Passive Solar Residence **Tesuque, New Mexico**

Clients:
Anthony D. and
Christine R. Rousselot

Architect:
Robert W. Peters A.I.A.
Albuquerque, New Mexico

Structural Engineer:
Engineering Associates, Inc.

Mechanical Engineer:
Don Felts and Associates

Electrical Engineer:
Don Felts and Associates

General Contractor:
Terry Egbert Building Co.

Landscape Architect:
Christine R. Rousselot

Photography:
© Robert Reck

The site is a 6 acre mesa top north of Santa Fe, with sweeping views of the Sangre de Cristo mountains to the east, the Jemez mountains and the lights of Los Alamos to the west. The program called for a two-bedroom house of 2300 sq. ft. plus carport and storage area. The clients are two of the founding members of a local landscape architecture firm. Their requests to the architect included emphasis on "living in the landscape", a design which would "maximize energy efficiency", an appreciation for "sculptural space", and that the design "should concentrate on the use of light." They were not interested in a "Santa Fe Style" house, but evinced interest in certain spatial concepts traditional to the area, including in-line openings between rooms and the use of "ramadas" to shelter outdoor living space. Placement of their collection of furniture, art and artifacts, ranging from classic 20th century designs of Mies van der Rohe and Ward Bennett to Shaker chairs and New England antiques, was to be an important criteria for the space design.

The plan creates three zones, divided by mass walls which serve as trombe walls when exposed to the exterior, and as thermal storage walls through the interior where they are positioned to receive winter sun from clerestory windows parallel to them. Each zone is approximately 21 feet wide, with the clerestory units serving to divide them spatially, and to coincide with interior partitions. Operable awning units in high and low windows can be opened to provide summer cooling, while ceiling radiant panels and centrally located wood stove provide back up winter heating. The higher clerestory portions of the roof are repeated on the west as Ramadas or shelters, with nylon sun shade panels used to provide summer shade for trombe wall glass surfaces, and for dining, living and bedroom patios.

View windows on east and west facades are shaped to frame specific portions of the foreground landscape as well as mountain panoramas; sliding glass doors on the west appear to continue trombe wall glass while patio access. The east, entry side includes a small terrace garden sized for the limited irrigation allowed by covenants, while the west side relies on native plant materials and natural rainfall. Pale color tints given to interior walls seem to change constantly with the light, emphasizing the interior/exterior relationship which is the clients' delight and joy.



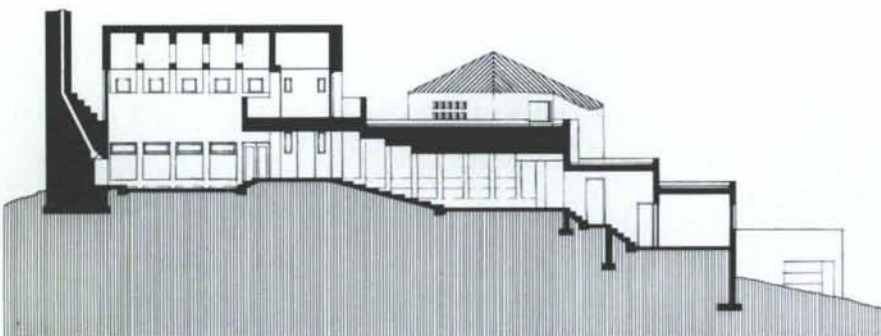
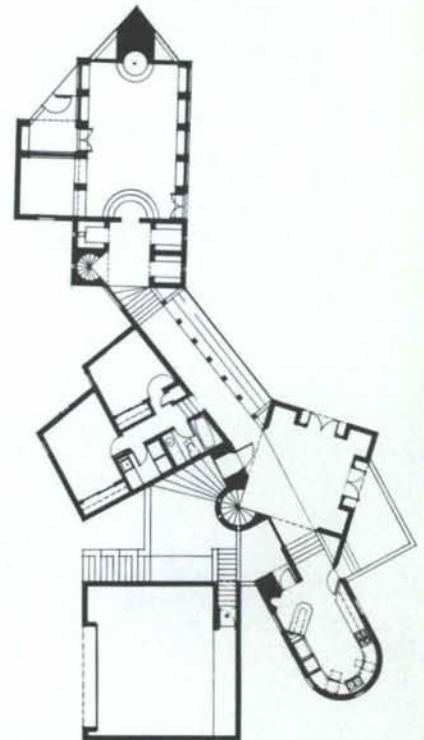
Single Family Residential
Treaster/Gray House
Tesuque, New Mexico

Honor Award
Antoine Predock, F.A.I.A.
Architect

This house unfolds as a fragmented village of rooms as it climbs the flank of a ridge. The ceremonial approach to the house—circuitous dirt road amidst aromatic *piñon* and juniper trees; distant views of the metal roofed bedroom tower rising above huddled pieces of the house (each piece a different frozen sunset color)—sets the stage for this 'house as theater' for the musician owners. The processional, sequential places experienced on ascending the site through the house culminate in the living room, a performance space, which breaks like a wave over the ridge, high above the Tesuque Valley. The simple, archetypal pieces of the house resemble the villages of Northern New Mexico. Colliding, shifting axes of the six fragments result from relationships to topography, views, and the preconceived ceremonial path up the hillside.

Imagine an evening gathering: the visitor arrives in a parking *placita* and climbs a series of steps on axis with the stair tower, enters into a space with views channeled toward the Jemez Mountains and the lights of Los Alamos, passes along a gallery/greenhouse, ascends through a stage-like proscenium opening, then emerges as an actor on the living room stairs and as a witness to a musical performance below.

The ceremonial aspect of the house must, of course, simultaneously address pragmatic issues of the owners day to day lives. But the romance of the site overlayed by the clients' artistic persuasion produces an experiential sequence both reflecting and transcending the program.



Treaster/Gray House
Tesuque, New Mexico

Clients:
 Byron L. Treaster
 Jane Gray

Architect:
 Antoine Predock, F.A.I.A.
 Albuquerque, New Mexico

Project Architect:
 Jon Anderson

Mechanical Engineer:
 Don Felts and Assoc.

General Contractor:
 Blue Raven Const. Works, Inc.

Photography:
 © Robert Reck

Honor Award

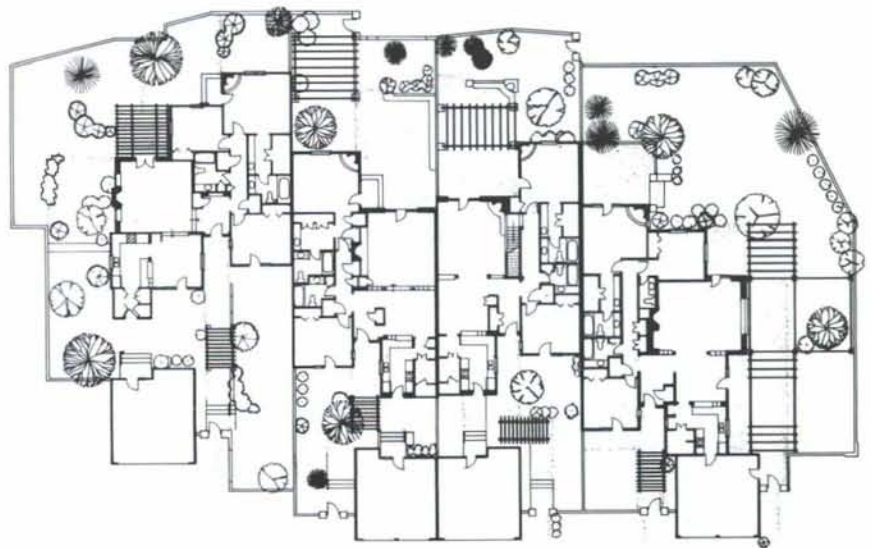
McHugh Lloyd and Assoc., P.A.
Architects

Multi-Family Residential

Los Miradores Condominiums
Santa Fe, New Mexico

The client wished to create a luxury housing project that was the best that New Mexico had to offer.

The concept was to recreate the undulating flow of the walls and winding streets of the intimate spanish village, take advantage of the many fabulous mountain views and to provide year round security for the frequently absent owners. Architectural distinction conforming to historical styles coupled with a unity between land and structure were key goals. Additionally, the project was to leave the maximum amount of open space preserved in a natural state. (The project is on 16 of 160 acres).



PLAN A

PLAN C

PLAN B

PLAN D

S O S 10



Los Miradores Condominiums Santa Fe, New Mexico

Client:
Zeckendorf Partnership

Architects:
McHugh Lloyd and Assoc., P.A.
Santa Fe, New Mexico

Structural Engineer:
DeLapp Engineers

Mechanical Engineers:
Metro-Tech Engineers Inc.

Electrical Engineers:
Telcon Engineers

Contractor:
Davis and Assoc. - Phase 1
B.O.A. Construction/Odell
J.V. - Phase 2

Photography:
© Robert Reck

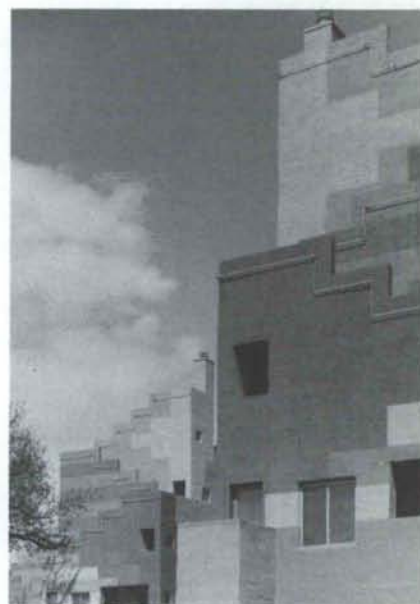
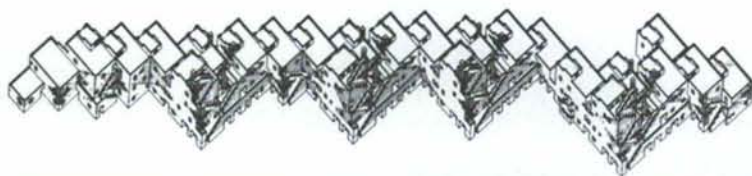
Multi-Family Residential

The Beach Apartments

Albuquerque, New Mexico

Honor Award
Antoine Predock, F.A.I.A.
Architect

Architecturally, the existing context is so poetically loaded that one must selectively edit the stream of images—from the Grapes of Wrath voyagers to the wheeled version of the Spanish Evening Paseo. The U.S. Route 66 polychrome frontage of The Beach addresses the cacophony of images and multiple scales of the highway. The opposite country club elevation is a subdued quasi-mediterranean averaging out of that neighborhood's stylistic drift. The resultant hybrid apartment on the historic site represents an abstraction of Highway 66 iconography. The accreted atmospheres of the site are expressed through feelings of the historic place that avoid easy nostalgic references. Advancing and receding patterned portal frontispieces reduce the 750' long behemoth to familiar 66 scale parking courts. The graphic facade patterning has Navajo blanket terraced grid implication, but is articulated by neon tubes as are stepping balustrades and parapets which are three dimensional colored patterns. The colored stucco banding transitions from a base of Rio Grande Valley olive greens through the sunset colors of the mesas and mountains to the sky blue penthouse terraces. Four peaks of Penthouse Sky Plazas rise above the intermediate parking court valleys, the whole arrayed in an architecture cum landscape fashion against the distant mountains backdrop of the site. Views from within the apartment units, terraces and courts are toward the mountains across the golf course with secondary views toward the West Mesa volcanoes and sunsets. Upper common terraces connect to stairways which lead to a secluded canal. Faintly glowing neon emanating from recessed courtyards rekindles the intrigue of old Highway 66.



The Beach Apartments

Albuquerque, New Mexico

Owner/Developer:
D.J.R. Incorporated

Architect:
Antoine Predock, F.A.I.A.
Albuquerque, New Mexico

Structural Engineer:
Randy Holt and Assoc. Inc.

Mechanical Engineer:
Four Seasons Engineering Limited

Electrical Engineer:
Telcon Engineering Inc.

Construction Manager:
Bradbury and Stamm

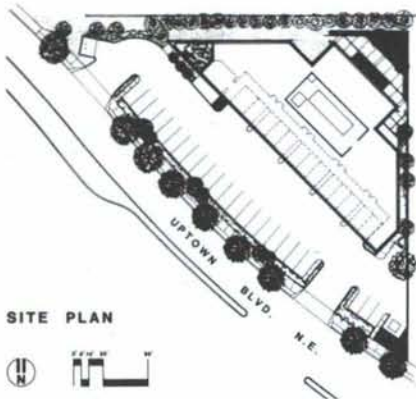
Photography:
Timothy Hursley
The Arkansas Office

Honor Award

De la Torre & Rainhart, P.A., A.I.A.
Architects

Commercial

One Coronado Place
Albuquerque, New Mexico



SITE PLAN



One Coronado Place Albuquerque, New Mexico

Owner:
D.E. Boyle Companies

Architects:
De la Torre & Rainhart, P.A.,
A.I.A.

Structural Engineer:
Chavez/Grievess Consulting
Engineers

Civil Engineer:
Chavez/Grievess Consulting
Engineers

Mechanical Engineer:
Gioni Engineering Inc.

Electrical Engineer:
Zerwer Engineering Inc.

Landscape Architect:
Hilltop, Inc.

General Contractor:
Gerald Martin Construction

Photography:
© Kurt Gittings/Syntax

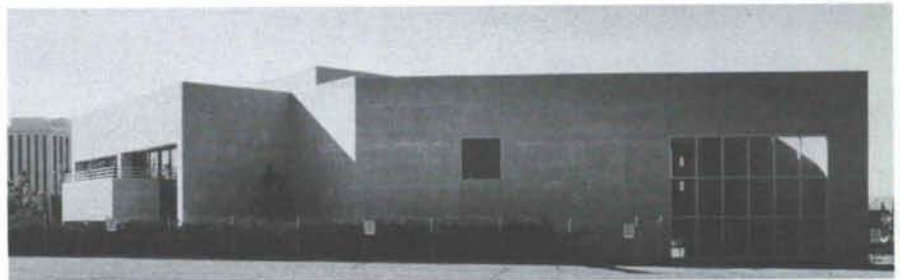
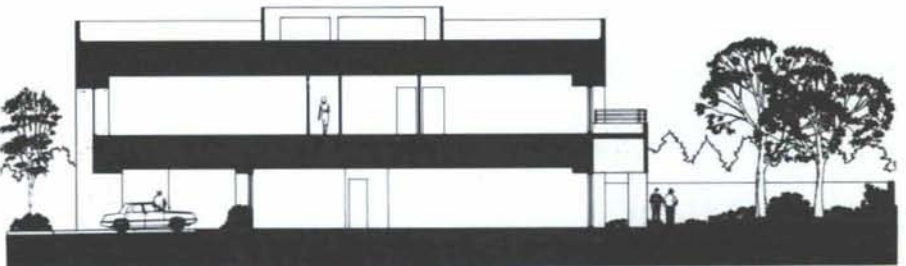
A small, triangular property with an exceptionally high square foot cost required a design which would maximize the utility of the site. Highly finished, modern financial center buildings created the context for the building. The major shopping center of the metropolitan area is the site's northern neighbors. To the east, a restaurant developed at a higher grade level required special accommodation.

The necessary retaining wall encouraged an inward looking approach to the site's development.

The ground floor's single tenant has full use of the landscaped patio garden created in the northern apex of the triangle. The second floor is comprised of five different suites with the southern side enjoying views of the nearby well-landscaped buildings, as well as views of Downtown Albuquerque. Private balconies on the northern side of the second floor overlook the garden and enjoy a panorama of the Sandia Mountains.

Concealed mullion fenestration is used to enhance the simplicity of the small structure. An accent color in the parking area defines the space.

The lines of the building were extended to create a shade entry court which complied with the requirements of the overall sector plan to provide outdoor seating space. Immediately past the entry, a two-story lobby with plantings over the vestibule ties both floors visually.



Institutional Buildings

Belen High School Gymnasium Belen, New Mexico

An existing 12' level change in the site provided the basis for design for this High School Gymnasium, a 46,000 square foot facility in New Mexico. The public, coming from parking to the north, is introduced to the Main Gym at a mezzanine level. Student activities take place on the lower level providing a clear public and student activity separation.

The building is skewed on the site allowing visibility of the existing community swimming pool to the west, as well as creating a landscaped foreground for both buildings. The building is hinged at the middle creating a visually important student entry to the south as well as a south facing court yard for outdoor activities, such as pep rallies.

Spaces provided in the building include: Main Gym seating 2,000 for public events or providing two courts for P.E. classes, Lobby, Auxillary Gym, Lockers and Showers, Offices, Training Room, Wrestling Room, Weight Training Room, Laundry, and Storage.

Other design features include the use of natural light throughout the facility with skylights and openings glazed with glass block. The large, clear windows in the Lobby area overlook the city, the Rio Grande valley, and the Manzano Mountains to the east. Red brick was used to match existing buildings on the campus. Light color brick was used to accent features such as windows. The school's colors of purple and white are incorporated into the interior color scheme.

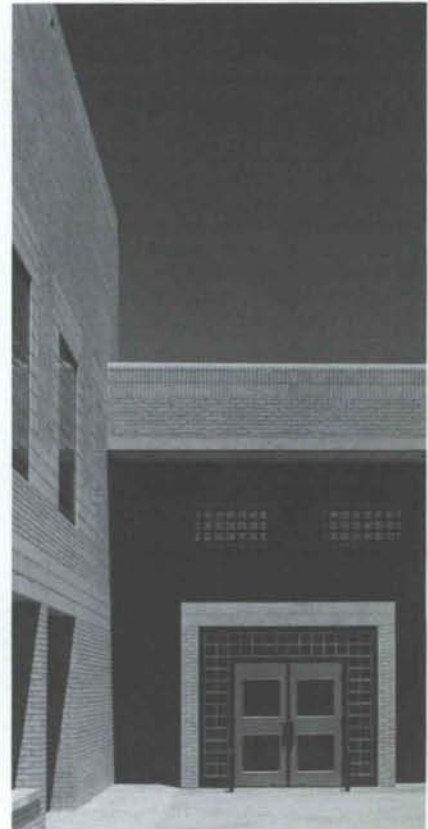
Construction Cost: \$3,800,000

Completion: 1986



Honor Award

Edith Cherry/D. James See, A.I.A. Architects



Belen High School Gymnasium Belen, New Mexico

Client:
Belen Consolidated Schools
Belen, New Mexico

Architect:
Edith Cherry/D. James See
Albuquerque, New Mexico

Programming:
Architectural Research Consultants

Structural Engineer:
Robert Krause

Mechanical Engineer:
Allison Engineering Inc.

Electrical Engineer:
Tierra del Sol Engineering Inc.

Contractor:
Phase 1: Kitchens Construction
Phase 2: T.A. Cole and Son

Landscape Architect:
Guy R. Jones ASLA

Photography:
Interior: © Kurt Gittings/Syntax
Exterior: D. James See

Honor Award

Royston Hanemoto Alley and Abey
Landscape Architects

Landscape Architecture

Valencia Campus, UNM
Belen, New Mexico



As a member of the design team, the primary work task was to develop the Master Plan for the campus integrating the building concept with the site development. All development is related to the five year building projection and the opportunities and constraints of the project site.

The 100 acre campus site is located midway between the towns of Belen and Los Lunas on open natural sage and grass land. The surrounding areas are undeveloped but are subdivided for future growth. The site has views of the distant mountain ranges, especially Tome Hill. One major constraint was to develop the campus at the fringes of the 100 year flood plain line. The other major constraint was to develop a campus reflecting the needs of the local, social fabric of the two communities and school districts.

The campus Master Plan reflects an oasis in the desert, with one story buildings built around a central plaza. The center of the plaza features a large tiled fountain which is ringed by trees in raised planters to shade the numerous seating areas. Two distinctive courtyards are tucked away amidst the earthtone building. These courtyards feature fountain, trellis, display pedestal and seating areas. Entrance to the campus buildings shall provide a gradual "transition" from the natural landscape to a more refined and urban landscape.



Valencia Campus University of New Mexico Belen, New Mexico

Client:
Board of Regents
University of New Mexico

University Architect:
Van Dorn Hooker, F.A.I.A.

Landscape Architect:
Royston, Hanemoto, Alley
and Abey
Albuquerque, New Mexico

Civil Engineer:
D.M.J.M. Engineers

Contractor:
Accent Landscaping
El Paso, Texas



ROYSTON, HANAMOTO, ALLEY & ABEY

Landscape Architects and Land Planners

319 Central Avenue, NW

Suite 301

Albuquerque, NM 87102

(505) 242-7702

Our California office remains at:

225 Miller Avenue

Mill Valley, CA 94942-0937

*The firm continues to offer services in
landscape architecture, land planning, urban design,
park planning and environmental planning*

THE PUNCH LIST WITH LESS TO PUNCH.

At Jaynes, we put a lot of extra care into the last 5 percent of a job. We watch every detail. We don't cut corners. And we get it right the first time. So if you're doing a Jaynes punch list, plan to make it short.



Your Single Source Builder

Santa Fe 471-4124 Albuquerque 345-8591 Farmington 326-3354

License No. 4866



BENJAMIN DECORATING COMPANY

offers a complete range of fine painting:

- STANDARD PAINTING
- WALL GLAZING
- STENCIL (cut and applied)
- TECHNIQUES FOR ARCHITECTURAL
DETAILING:

- Granite
- Tortoise shell
- Stone finishes

*Better Homes & Gardens, Architectural Digest,
The Albuquerque Journal, The New Mexican,
and New Mexico Architecture have featured
homes decorated by
BENJAMIN DECORATING COMPANY.*

JIM BENJAMIN

License NM#023969

102 W. San Francisco St.
Suite 16

Santa Fe, New Mexico 87501
(505) 982-4566

(Continued from page 9)

architectural issues of global interest following the exhibit hall opening.

Special attractions and events in the exhibit hall include federal agency interview programs, software tutorials, and new products and services from more than 200 exhibitors.

Major exhibitors include AMOCO, Fabrics and Fibers, Andersen Corporation, McGraw-Hill Construction Information Group, DuPont, Graphic Horizons, Halo Lighting, Haworth, James Hardie Building Products, Point Line Company, Hafele America, HEWI Inc., Cooper Industries Inc., Louver Drape Inc., and Velux-America Inc.

The federal agency interview program, a "how to" on obtaining design contracts with the federal government, drew standing-room-only crowds at last year's AIA National Convention. The federal program, which offers AIA members the opportunity to meet with representatives of the major federal agencies, will be open throughout exhibit hall hours. Added to this year's federal program is a workshop on how to fill out federal standard forms 254 (to list general qualifications) and 255 (to apply for specific projects) and a panel discussion by federal agency representatives on contracting topics, including A/E selection and evaluation. Convention attendees can sign up for this program when registering at the convention site.

Among federal agencies that participated last year were the U.S. Postal Service, General Services Administration, U.S. Department of Justice Bureau of Prisons, U.S. Department of Energy, Environmental Protection Agency, U.S. Air Force, U.S. Army Corps of Engineers, U.S. Department of State, Veterans Administration, Department of Defense Office of the Secretary of Defense, and the Naval Facilities Engineering Command.

Computer software tutorial programs located in the exhibit hall are new this year. Highly qualified training representatives (rather than salespersons) from the computer industry's major software suppliers—including Autodesk, Computervision, Versa CADD, Harper Schuman, Timberline, and Semaphor—will be applying their specific software systems to identical problems. An architect can then test a variety of systems (all working on the same problem) in order to find the system that best fits his or her requirements.

The computer software tutorials are offered as a series of fifty-minute "hands-on" tutorials/demonstrations on PC-CADD, financial management, and project management. Each session will be limited

to no more than eight participants and will cost \$35, payable at convention professional development registration.

The federal agency interview program (booths 1060-1076) and the computer software tutorials (booths 145-169) are open during regular exhibit hall hours: Friday, June 19, from 11 A.M. to 3 P.M., and Saturday through Monday, June 20-22, from 10 A.M. to 3 P.M.

The ever-popular exhibit hall AIA bookstore and the host chapter store will tempt conventioners with the latest titles on practice and design and will offer a host of gift items, all at a discount for AIA members.

Door prizes, donated by exhibitors and the AIA, will be awarded to AIA members who can identify the architects and speakers on the AIA convention poster. Entry forms will be included in the registration packets and winners will be announced from the exhibit hall floor.

PLUS: FACT, FUTURE AND FANTASY TO BE EXPLORED IN FIRST WEEKEND AIA NATIONAL CONVENTION IN ORLANDO

What are the facts of business life for architects today? How can architects adjust to and thrive in the present economic climate? These basic questions and issues in architectural design will be explored amidst the creative energy, fantasy and futuristic settings of Disney World and EP-COT in Orlando, where The American Institute of Architects will hold its first weekend national convention.

Scheduled for Friday, June 19, through Monday, June 22, the convention will allow architects to take full advantage of special programs and events, including business and professional learning sessions while spending less time away from their offices.

A new approach to professional development will be featured in learning "tracks" geared to the specific roles architects' play as designers, managing partners, marketers and production/technical systems specialists. A special track will address the multiple roles of architects in small firms.

AIA open committees will share their expertise in many area including practice management and design in educational facilities. Special breakfasts on management and historic preservation will round out the unique learning opportunities that the 1987 convention will afford architects.

LOCAL CONDOMINIUMS CITED FOR EXCELLENCE

By Robert Storey
The New Mexican Staff

A luxury condominium project in Santa Fe, 800 East Properties on the Hyde Park Road, has been featured in the spring 1987 edition of *Better Homes and Gardens'* Building Ideas issue as a good example of Southwestern adobe style and design using contemporary materials and designs.

The national publication, which presents award winning architectural home floor plans, selected the 800 East designs as an example of the use of natural building materials.

The project, developed by contractor Ralph Brutsche, architects Ted Waddell and Steve Ewing, and designer Christy Schackel, is featured in a six page, full-color layout.

The two and three-bedroom condominiums are dispersed and notched onto construction sites along a series of ridge line north of Hyde Park Road, within the city limits.

The condominium project, including adjoining 1000 East and 1200 East phases, is zoned for 79 units on 61 acres. Currently 35 units, which are in the \$250,000 range, have been built.

The units range in size from 1,250 to 2,900 square feet.

"We feel it is a real honor to be selected for the *Better Homes and Gardens'* ideas book. The fact that they have included us confirms our belief that we have a special and excellent design and location," said Richard Jay, in charge of 800 East sales.

ARCHITECTURAL FIRM ADDS PARTNER

The Santa Fe architectural firm of Abeles Pfeffer and Associates has announced the addition of David A. Carr as a partner in the new firm of Abeles Pfeffer, Carr and Associates.

Carr holds a bachelor of architecture degree from Kansas State University and has been an associate with John David Abeles Pfeffer for 3½ years. He has 10 years of institutional and medical facility experience and will be responsible for office management and contract document production.

The firm specializes in health care and renovation projects and is currently designing additions, renovation and remodeling of Rehoboth McKinley Christian Hospital in Gallup.



INTERIOR LANDSCAPING DESIGN
LEASING • MAINTENANCE



The Professional Plant People
(505) 888-5821

505/294-5077

JAMES DE FLON
A.S.L.A.

The Hilltop INC.

LANDSCAPE ARCHITECTS & CONTRACTORS

MONTGOMERY AT TRAMWAY / P.O. BOX 14933 ALBUQUERQUE, NEW MEXICO 87191



FRANKLIN'S Earthmoving, Inc.

2425 Jefferson Street, N.E.
Albuquerque, New Mexico 87110
Phone (505) 884-6947

SIGNS NOW!

**SITE SIGNS
BANNERS
ARCHITECTURAL GRAPHICS**

1 DAY SIGN & LETTERING SERVICE

884-4555

6113 Menaul N.E.
Albuquerque, NM. 87110



*Home of the
Concrete Giant!*

ALBUQUERQUE GRAVEL PRODUCTS COMPANY

**DEDICATED TO QUALITY
AND SERVICE**

600 John Street S.E. Tel. (505) 242-5265
P.O. Box 829 Albuquerque, NM 87103



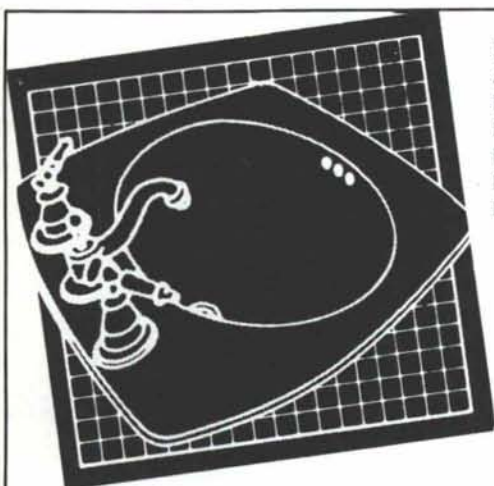
**SANTA FE
LIGHTS**

ARCHITECTURAL
LIGHTING FIXTURES
IN SOUTHWEST
ADOBE STYLE

INDOOR & OUTDOOR
WALL, CEILING AND
HANGING LIGHTS,
CHANDELIERS &
GARDEN LIGHTS

SANTA FE LIGHTS

Rt. 10, Box 88Y, Santa Fe, New Mexico 87501
(505) 471-0076 / Brochure Available



Kohler
American Standard
Elger
Broadway
Moen
Delta
Hardin

THE GOLDEN FAUCET

Plumbing Products Showroom

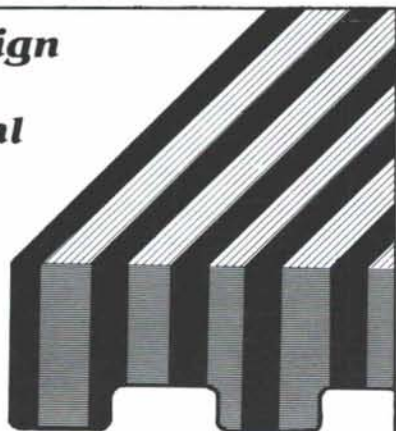
Turn Your Home From Ordinary
To *Extraordinary!*

7200 Menaul, NE
Albuquerque, NM 87110

881-6555

**Custom design
for today's
architectural
needs.**

*Growing With
Albuquerque
Since 1947*



- **Canvas Awnings**
Commercial & residential. Custom designed & fabricated
- **Upholstering**
Commercial, office, patio, auto, trucks, RV's
- **Tent Rentals / Sales / Repairs**
Party canopies, big tops, camping

RADER
AWNING & UPHOLSTERING, INC.

915 4th Street NW
Albuquerque, New Mexico 87102
505-243-4523

NICKEL'S
• BUSINESS MACHINES •

**SALES • SERVICE
SUPPLIES • RENTALS**

Panasonic
Office Automation **OA**



LEADING EDGE™

olivetti

8328 LOMAS NE
ALBUQUERQUE, NM 87110

265-8000



LATIA CEILING PANELS™

LATIA CEILING PANELS COMBINE THE TRADITIONAL BEAUTY OF REAL WOOD WITH ECONOMY AND EASE OF INSTALLATION. NOW AVAILABLE, EXCLUSIVELY, FROM GRAND RIVER DOOR.

FOR ADDITIONAL INFORMATION CONTACT:

GRAND RIVER 505/867-4110
DOOR PO BOX 15360 RIO RANCHO, NM 87124

Professional Directory



Sergent, Hauskins & Beckwith
CONSULTING GEOTECHNICAL ENGINEERS

(505) 884-0950

4700 Lincoln Road, NE-Albuquerque, New Mexico 87109

PHOENIX • ALBUQUERQUE • SANTA FE • SALT LAKE CITY • EL PASO • TUCSON

DURHAM • HARRIS • KILMER • NOLAN



605 W. COUNTRY CLUB ROAD

ROSWELL, NEW MEXICO 88201

(505) 623-5588



CHAVEZ GRIEVES / CONSULTING ENGINEERS, INC.

VICTOR J. CHAVEZ
DAVID H. GRIEVES

4600 Montgomery NE
Building C, Suite 101
Albuquerque, NM 87109
(505) 881-7376



THE BOEHNING PARTNERSHIP INC.
ARCHITECTS & PLANNERS

JOE BOEHNING, AIA DAVID COOK, AIA PAT McMURRAY, AIA BOB TURNER, AIA

301 GOLD AVENUE SW • SUITE 204 • ALBUQUERQUE, NM 87102 • (505) 242-4044

(505) 265-5823

Randy Holt & Associates, Inc.
CONSULTING ENGINEERS

RANDY HOLT, P.E.
PRESIDENT

7920 MOUNTAIN ROAD, N.E.
ALBUQUERQUE, NEW MEXICO 87110



RICARDO A. BACA, P.E., C.P.E.
Cost Consulting Engineer

1116 Wyoming Ave.
El Paso, Texas 79902
915/533-1176

In New Mexico
Call
505/883-9686

*Listing space in this Professional Directory
available through*



Carleen Lazzell,
Advertising Editor

NEW MEXICO ARCHITECTURE
8515 Rio Grande Boulevard NW
Albuquerque, NM 87114
505-898-1391

j. david dekker
architect
marc schiff
architect
robert gerard heiser
project manager



design collaborative sw

architecture planning energy consulting

105 fourth street sw, albuquerque, nm 87102

505-843-9639

ACS

ARCHITECTS-CONNELL-STRAIN & ASSOCIATES

P. O. BOX 2106 ROSWELL, NEW MEXICO 88201 (505) 823-5700
P. O. BOX 4063 SANTA FE, NEW MEXICO 87501 (505) 983-8837
P. O. BOX 1166 FARMINGTON, NEW MEXICO 87499 (505) 327-2316

Schlegel Lewis Nelson Brawley Architects, Inc.

1620 Central SE Albuquerque, New Mexico 87106 505-247-1529



**bernabé
ROMERO**
a-i-a
architect

BERNABÉ ROMERO

POST OFFICE BOX 5072
SANTA FE, NEW MEXICO
87502

200 WEST DE VARGAS
TELEPHONE (505) 982-2123



WEBB-LEONARD-VAUGHAN
ARCHITECT-ENGINEER

3700 COORS ROAD N.W.
ALBUQ., N.M. 87120

(505) 831-0434

BPLW

Architects & Engineers, Inc.



(505) 881-2759

American Financial Center #5
Suite 400
2400 Louisiana Blvd. NE
Albuquerque, New Mexico 87110

Designing to Shape the Future

GEORGE H. BOLLING, AIA

HOWARD S. COTTRELL, PE



**DESIGN
PROFESSIONALS, INC.**

4301 CARLISLE BOULEVARD, NE
ALBUQUERQUE, NEW MEXICO 87107
(505) 881-6336

ARCHITECTS/ENGINEERS

Consulting Services & Associates

PUBLIC RELATIONS • LEGISLATIVE • GOVERNMENTAL AFFAIRS

2161 CANDELERO STREET
SANTA FE, NEW MEXICO 87505

DICK RYALS

(505) 473-1222 OFFICE



STEVENS, MALLORY, PEARL & CAMPBELL, P.A.

ARCHITECTS
115 AMHERST DRIVE, S.E.
ALBUQUERQUE, NEW MEXICO

505 255-8668
87106

de la torre • rainhart pa
architects aia

two woodward center 700 lomas ne • suite 200
albuquerque nm 87102 • 505 842 9500



**ANDREWS,
ASBURY &
ROBERT, INC.**

CIVIL CONSULTING ENGINEERS

149 JACKSON ST. NE.
ALBUQUERQUE, NEW MEXICO 87108
(505) 265-6631

THE
McCLAIN COMPANY
HARDWOOD PRODUCTS

INSTALLATION • FINISHING • REFINISHING
RESIDENTIAL AND COMMERCIAL
FLOORS AND WALLS



WOOD FLOORS

- ROBBINS
- CHICKASAW
- MANNINGTON

3M ABRASIVES

GILLESPIE FINISHES
& FLOOR CARE PRODUCTS
DEX-O-TEX INDUSTRIAL FLOORING
KALWALL SKYLIGHTS
DWYER COMPACT KITCHENS

505-247-4848

2000 ZEARING NW • ALBUQUERQUE, NM 87104

Introducing the
DraftPro Plotter

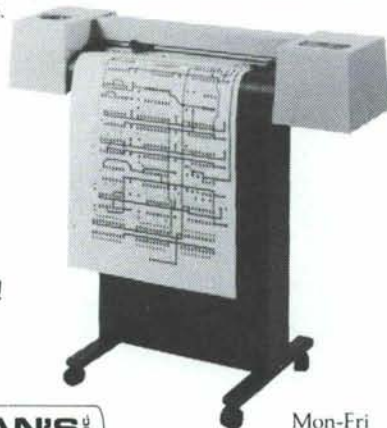
Quality Graphics for Your Personal CAD System

Hewlett-Packard offers the solution you (and your personal CAD system) have been waiting for ... the new HP DraftPro.

- Plots on A2/C- and A1/D-size single sheets (and the architectural equivalents) of paper, vellum, and polyester film.
- Holds an 8-pen carousel for fiber-tip, refillable liquid-ink, and disposable liquid-ink pens.
- Compatible with IBM, Apple, and Hewlett-Packard computers.
- Supported by the leading software packages.
- Provides traditional HP quality, reliability, and service at an untraditional low price.



Ask for a
demonstration today!
505 • 265-7981



HOLMAN'S
401 WYOMING NE
ALBUQUERQUE, N.M. 87123

Mon-Fri
8:00-5:30
Sat
10:00-3:00

new mexico architecture

nma

Published bi-monthly by New Mexico Society of Architects, American Institute of Architects, a non-profit organization. Editorial Correspondence should be addressed to John P. Conron, Box 935, Santa Fe, N.M. 87504. (505) 983-6948.

Editorial Policy: Opinions expressed in all signed articles are those of the author and do not necessarily represent the official position of the publishing organization.

Additional copies of NMA available from John P. Conron, FAIA/FASID, P.O. Box 935, Santa Fe, N.M. 87504.

Change of address: Notifications should be sent to New Mexico Architecture, Box 935, Santa Fe, N.M. 87504 (505) 983-6948 at least 45 days prior to effective date. Please send both old and new addresses.

Subscriptions: Write Circulation, New Mexico Architecture, Box 935, Santa Fe, N.M. 87504. Single Copy \$3.00. Yearly subscription \$15.00.

Advertising: Send requests for rates and information to Carleen Lazzell, Advertising Editor, 8515 Rio Grande Boulevard, N.W., Albuquerque, N.M. 87114, 505/898-1391.

INDEX OF FIRMS who make possible the publication of NMA and the page upon which their message can be found:

Albuquerque Gravel Products Company	22
Alexander & Alexander	8
American Business Interiors	27
Associated Systems	27
Benjamin Decorating Company	20
Builders Block	6
Carlson Heating and Air Conditioning, Inc.	6
Crego Block Co.	2
Crego Block Co.	28
Featherlite Building Products Corp.	7
Firebird, The	8
Franklin's Earthmoving, Inc.	22
Gerald Martin, General Contractor	5
The Golden Faucet	23
Grand River Door	23
The Hilltop, Inc.	22
Holman's, Inc.	26
Jaynes	20
Kitts Enterprises, Inc.	7
Kohler	Insert
Mason Contractors Association of New Mexico ..	10
The McClain Company	26
New Mexico Travertine	5
Nickel's	23
Paxton, Frank, Lumber Company	4
Pella Rio Grande Inc.	6
Plant Designs	22
Rader Awning & Upholstering, Inc.	23
Royston, Hanamoto, Alley & Abey	20
Santa Fe Lights	22
Security Alarm Systems, Inc.	4
Signal Systems	27
Signs Now	22
T.A. Cole & Son	8
Terry Egbert Building Co., Inc.	7
Tiles De Santa Fe	27
Tortuga, Inc.	7

Printed by Hall-Poorbaugh Press, Inc., Roswell, New Mexico

Do-It-Yourself Binding Systems



• SALES • SERVICE • SUPPLIES
RENT TO OWN



Signal (Binding) Systems

615 SAN MATEO NE
ALBUQUERQUE, NEW MEXICO 87108
(505) 262-1564
OUT-OF-STATE: (800) 545-0934

ASSOCIATED SYSTEMS COMPUTER SYSTEMS

Want to make sure the Profit Margin
is what it should be?

Software systems that balance
Time • People • Profit

PRODUCTION SCHEDULE II

SOFTWARE

Computing Tools for Architects

Call Collect
505-294-8200

ASSOCIATED SYSTEMS
9004 Menaul NE • Suite 15
Albuquerque, New Mexico 87112

Watson's

TILES DE SANTA FE HANDMADE FLOOR TILE

15 YEARS IN SANTA FE

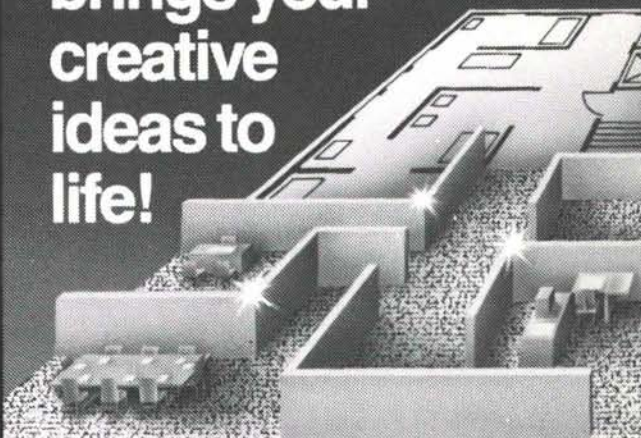
*"We made the floor tile for
the Rousselot Residence."*

Call or write for free brochure or samples:
P.O. Box 3767, Santa Fe, NM 87501-0767

505-455-7466

BUY AMERICAN

Bigelow... brings your creative ideas to life!



You've agonized over the concept, sweated out the plans, now it's time for the compliments. And when you specify Bigelow underfoot, you know the rug won't be pulled out from under you. We can supply and install the Bigelow carpet to complement your plans!



american
business
interiors

612 Central Avenue, SW
Albuquerque, New Mexico 87102
(505) 883-2055

PITTSBURGH CORNING
PCGLASSBLOCK®
PRODUCTS

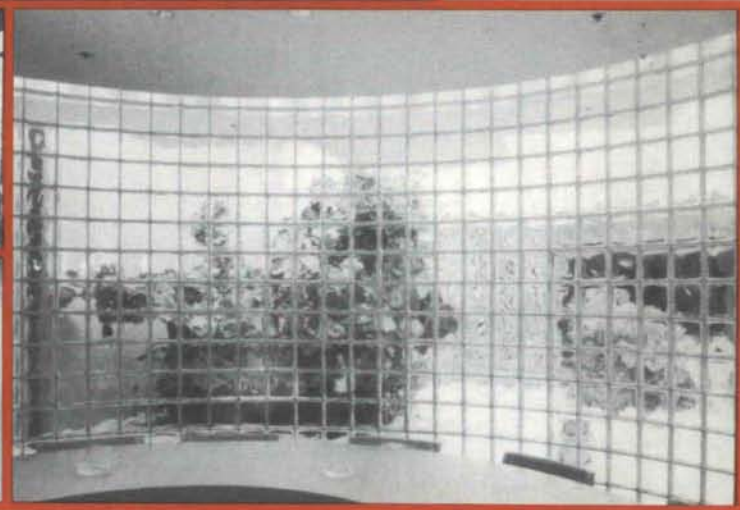
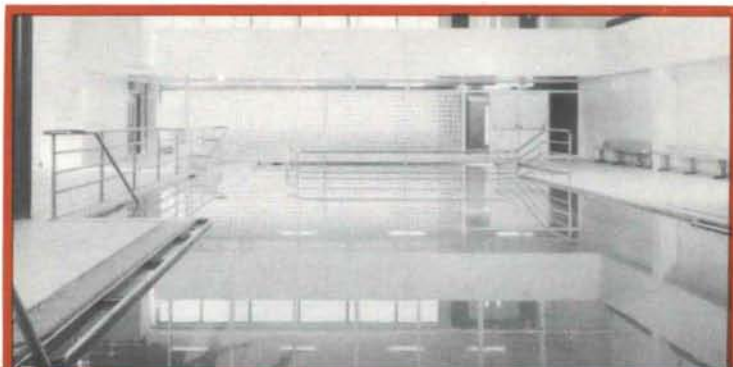
Postmaster: Address Correction Requested
New Mexico Architecture
8515 Rio Grande Blvd., N.W.
Albuquerque, NM 87114

Bulk Rate
U.S. Postage
PAID
Roswell, N.M.
Permit No. 47

00164-06 A60 EXPIRES / /
ROBERT K. DAUNER

2000 MOUNTAIN RD. NE
ALBUQUERQUE NM 87104

Glass Block for the 80's ...design with confidence



DISTRIBUTORS FOR THE STATE OF NEW MEXICO
WAREHOUSED IN ALBUQUERQUE



CREGO BLOCK CO.

P.O. BOX 6466
ALBUQUERQUE, N.M. 87117

6026 SECOND STREET, N.W.
(505) 345-4451

