

Fine Arts  
NA  
1  
N4  
v. 27  
no. 3

Mexico

# ARCHITECTURE

MAY/JUNE 1986

\$2.50

SERIALS DEPT.

JUL 9 1986

ZIMMERMAN LIBRARY

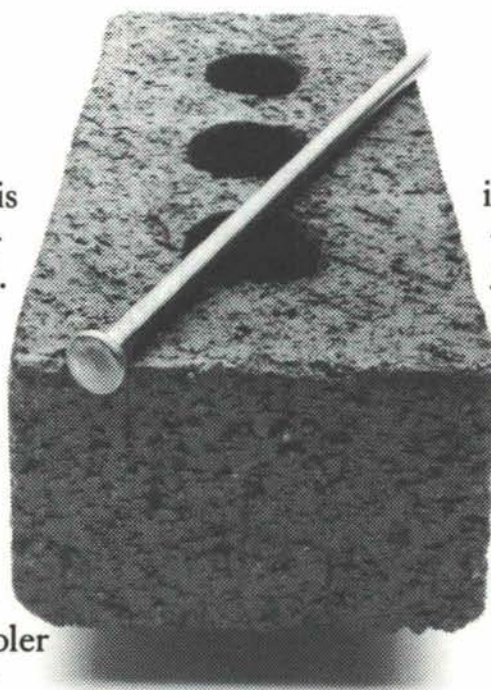
awards issue  
part one



# BRICK NAILS WOOD EVERY TIME.

All in all, brick is one of the best building materials around. And for some very down-to-earth reasons:

1. Brick requires less maintenance, at lower costs, than other materials.
2. It stays warmer in the winter and cooler in the summer for greater comfort and energy savings.
3. Brick is fire-resistant—for lower



insurance premiums.

4. It's insect-proof.
5. And its reputation for quality brings a higher resale value.

So whether you're buying, building, or remodeling, choose brick. And build a better life.

For more information about the benefits of brick, contact your local brick manufacturer or dealer today.



**BUILD A BETTER LIFE WITH BRICK.**

National Brick Week, June 9-15.

**MASON CONTRACTORS ASSOCIATION OF NEW MEXICO**





# nma

• vol. 27 no. 3 • may-june 1986 • new mexico architecture

## In this issue:

Are four of the seven winners in the New Mexico Society of Architects Honor Award program announced during the Awards Banquet held at the Inn of the Mountain Gods. Because of space limitations, the three additional award winners will be published in the July/August issue, which is about to go to press. The Society's program of awards is designed to recognize excellence in the production of architecture. **New Mexico Architecture** is proud to present to our readers these architectural projects.

The cover of this issue is made possible by the generous contribution of Don Felts, AIA, who is responsible for the design of the Sawyer House (see pages 8 & 9).

I want to express my thanks for the layout of the NMSA Award pages to Nancy Weinman of Albuquerque. Thank you, Nancy.

## New Mexico Society of Architects Annual Conference - 1986

The 1986 annual meeting and conference of the New Mexico Society of Architects - AIA will be held at the Hilton Hotel in Santa Fe October 9, 10, 11 - 1986. The conference sessions consisting of thoughtful, provocative and timely subjects will occur on Friday and Saturday. They will include a keynote presentation by G. Z. Brown, AIA from the University of Oregon at Eugene. Mr. Brown's topic: "Sun, Wind, and Light - Opportunities for Design", will discuss the sun, wind and light as a primary element in the development of building form and materials. Brown uses historical and contemporary buildings to demonstrate how these elements can be used to form, enliven and enrich architecture. The lecture includes an architectural recipe for the creation of a gourmet thermal and light experience.

In addition Ms. Ellen Beasley, Preservation Planning Consultant of Galveston, Texas, will discuss the evolution of historic districts in such cities as Santa Fe, Savannah, Georgia, Telluride, Colorado and Indianapolis, Indiana. Ms. Beasley surveyed these communities in 1977 for the National Trust for Historic preservation. She has just completed a re-visit and re-evaluation of the same communities. What has happened? Have they been "enhanced" or "dehanced" through the enactment and administration of historic district ordinances?

But that is not all. Other sessions and other panelists will explore these and other subjects of interest to the members of the New Mexico Society of Architects.

A gala New Mexico wine tasting reception is to happen at Shidoni Foundry in Tesuque Valley, as well as the traditional at-homes dinners. A golf tournament is currently scheduled for Thursday. Tours are being planned, exhibits of architectural produces, as well as locally produced architecturally related crafts, are scheduled. The program terminates with a Fellows Reception and Honor Awards Banquet in the newly completed Eldorado Hotel, just across the street from the headquarters hotel.

And not last, nor least, Mrs. Ellen Harland, AIA has undertaken the task of hosting a **Scrabble** tournament. Suitable prizes will be awarded!

Mark, today, your calendar. Come to Santa Fe at aspen time. Come to Santa Fe to be stimulated, to be entertained, to have your spirits raised and your minds expanded.

JPC

The Editor's Column 3

NMSA Honor Awards — 1986 7

The Sawyer House 8  
Don Felts, A.I.A.

Wool Warehouse Theatre and Restaurant 12  
Boehning, Protz, Cook & Associates, P.A.

The Seam "No Man's Land" 14  
Gene Dyer, Architect and Urban Designer

Duncan Residence 16  
Westwork Architects, P.A.

Sights & Sites '86 23  
The Albuquerque Development Tour

Professional Directory 23

Advertiser's Index 26

(Cover—The Sawyer House—Don Felts, A.I.A.—Robert Reck, Photographer)

—Official Publication of the New Mexico Society of Architects, A.I.A.—

## Society Officers

President—Don P. Schlegel, FAIA  
President-Elect—Randall L. Kilmer  
Secretary/Treasurer—John Eden  
Director—Peter Allen  
Director—Beryl Durham  
Director—Wayne Lloyd  
Director—Roger B. Lujan  
Director—Steve Newby  
Director—Richard C. Scott  
Director—William Friemuth

## New Mexico Architecture - Committee

John P. Conron, FAIA, —Editor  
Carleen Lazzell — Advertising Editor  
Van Dorn Hooker, FAIA — Chairman  
George Anselevicius, FAIA  
Marjorie Hooker, AIA  
Christopher Larsen, AIA  
Charles E. Nolan, Jr., AIA  
George C. Pearl, FAIA  
David Abeles Pfeffer, AIA  
Glade F. Sperry, Jr., AIA  
V.B. Price — Editor "New Mexico Magazine"  
Don P. Schlegel, FAIA  
Christopher Wilson, Architectural Historian

International Standard Serial Number—0545-3151



# IF YOU THINK YOU HAVE TO GO TO A CAD SPECIALIST TO GET THE RIGHT CAD SYSTEM, YOU'RE RIGHT.

But you don't have to go out of your way.

Because Businessland has a computer aided design specialist to help put together the right microcomputer based CAD system for you. And experts in our learning center can help you get the most out of your system.

So if you thought you needed a specialist, you were right. But if you thought Businessland couldn't be that specialized, you were wrong.

## **BUSINESSLAND®**

Where business people are going to buy computers.

ALBUQUERQUE: 6601 Menaul Blvd., N.E., 883-1833. Now more than 60 locations throughout the U.S.

for the finest...



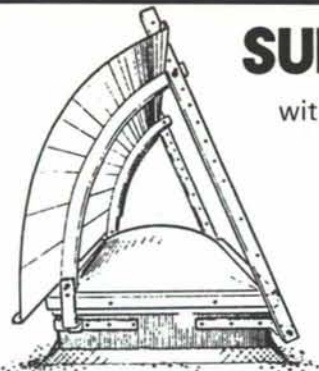
...travertine and marble quarried and fabricated in New Mexico for

- flooring
- interior and exterior cladding
- feature panels
- furniture and accessories

**NEW MEXICO TRAVERTINE**



4741 Pan American Freeway NE  
Albuquerque, NM 87109 Telephone 505 345 1327

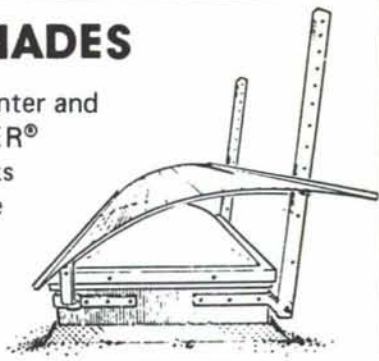


WINTER

## SUNBENDER® REFLECTOR/SHADES

without them, your skylight will cool you in the winter and overheat you in the summer. The SUNBENDER® increases winter heat and light gain and blocks out direct summer sun while allowing diffuse daylighting. Better performing and less expensive than clerestories. Available plain or with mirror lining (see cover).

Other Sun Control Products Also Available



SUMMER

IN ALBUQUERQUE:  
1221 EDITH, NE  
P.O. BOX 25805  
ALBUQUERQUE, NM 87125  
(505) 242-5354

**zomeworks**

corporation

Passive Solar Products for Heat and Light Control

IN SANTA FE:  
1810 SECOND STREET  
SANTA FE, NM 87501  
(505) 983-6929

Sweets No. 10.24ZOM

## PROFESSIONAL PRESENTATIONS MADE WITH VELO-BIND

You can choose from attractive, durable, soft covers that easily file, shelf, and mail — or select library-quality hard covers for an elegant, distinguished look. The Velo-Bind look is classic, clean and uncluttered.



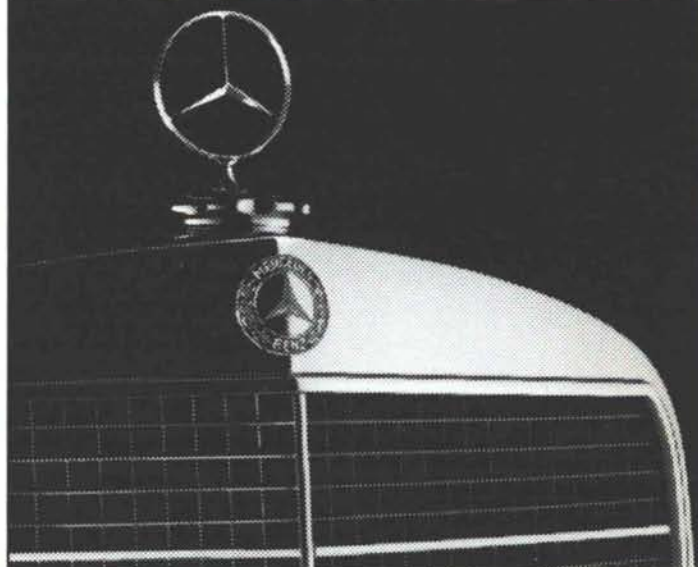
Bind soft cover documents in 20-60 seconds; hard cover books in just a half minute more. Desk-top equipment is compact, clean, easy-to-operate.

For more information, call:



**Signal Systems**

615 San Mateo Blvd., NE  
Albuquerque, N.M. 87108  
(505) 262-1564



**Mercedes-Benz**



- Authorized sales and 24 hour service
- Large inventory
- '86 Mercedes-Benz leases

Available from

**\$399.99**

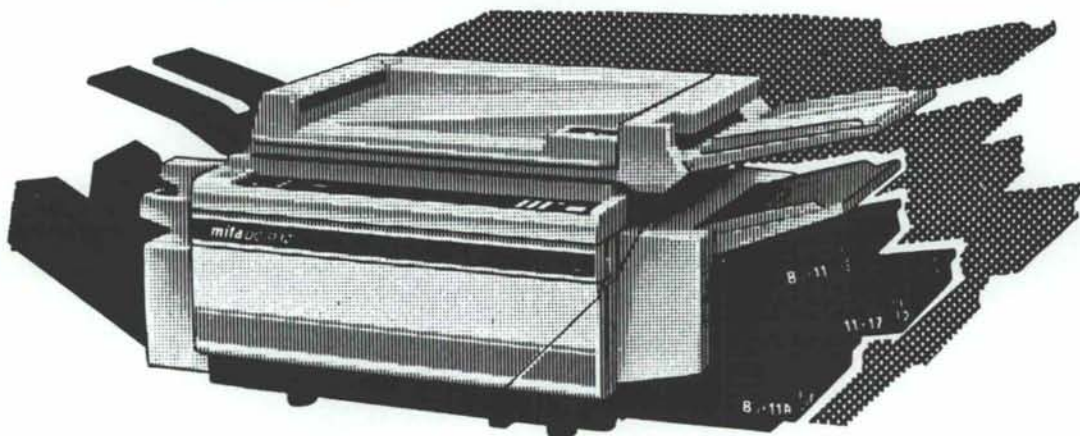
Per month

**ROSWELL  
IMPORTED CARS,  
INC.**

204 East College  
Roswell, NM 88201  
(505) 622-6275



# INTRODUCING THE *mita* DC-313Z



with **ZOOM**

**REDUCTION** and **ENLARGEMENT**

... because all originals don't come in perfect sizes!

Don't be limited to preset copy sizes! With the DC-313Z plain paper copier, 766 different steps of magnification are possible!

And, the DC-313Z offers:

- Copies as big as 11 x 17
- Convenient 4 way paper feeding system
- Automatic magnification selection
- 30 copies per minute
- Snap in toner cartridge for easy loading
- Easy to read display
- 7-step density selection
- Letter perfect dry copies
- Optional automatic document feeder and sorter



The Perfect Copier for Architects and Engineers  
Call for a Demonstration

**INNOVATIVE CONCEPTS, INC.**

6329 Lomas, NE

Albuquerque, New Mexico 87110

(505) 255-1692





## 1985 Honor Awards

The New Mexico Society of Architects Awards Program is a highly respected tribute to architectural excellence. The selection is made on the basis of design excellence, sensitivity to human and functional needs and to the built environment. The purpose of this Awards Program is to encourage a high level of architectural design, recognize the clients and architects who have distinguished themselves by their accomplishments and to inform the public of the high architectural quality being brought to bear in the physical environment.

Every year a jury of renowned professionals, architects and others from allied fields are invited to judge the year's work by New Mexican architects. Their personal review of the local work is done on an anonymous basis so that they may not be influenced by the identity of any local architects. The projects this year were reviewed on an individual basis from slides. The jury made the following general comments on the subject of Regional Architecture.

### Jury Statement

The jury gave Awards of Honor to seven projects out of thirty six submissions. The standard of the submissions was high. The jury particularly lauded the photography and made the suggestion that consideration be given to recognition of the photographers. The jury did note that there were few interior slides. Those projects that did receive an award generally made a very good presentation of the interiors. The jury encourages future submissions that show how a building relates to its surrounding environment and how landscape contributes to design.

(Presentation of Awards winners will continue in the July/August issue of NMA.)

### William C. Muchow, FAIA

William C. Muchow, FAIA founded his design firm, W.C. Muchow and Partners, in 1950 after having received degrees from Notre Dame, University of Illinois, and a Masters Degree in Architecture and Urban Planning from Crannbrook Academy. His firm has designed over 700 projects in the Denver area and has received several significant design awards. Mr. Muchow has served on eight major design awards juries and has served as juror on twenty one AIA chapter design awards programs throughout the United States.

Mr. Muchow is listed in Who's Who in America and Who's Who in the World. He is the holder of a Rome Prize, has received the American Registered Architects Special Service Award, the Silver Medal of the Western Mountain Region of the AIA, and the Buell Honor Award of the Colorado Society, AIA, as Outstanding Architect.

He serves as member of the Denver Technological Center Design Review Board and the University of Colorado Design Review Board. He has served as National Treasurer of the American Institute of Architects, Past President of the Colorado Society of the American Institute of Architects and on the National Council of Architectural Registration Boards.

### Ida Pearl Jeffers

Ida Pearl Jeffers has a long standing reputation of involvement in major community volunteer services in Albuquerque and New Mexico. She has been chair of the Environmental Planning Commission, of the New Mexico Architects/Engineers Joint Practice Committee, and of the Citizens Advisory Group for Community Development. She is a member of the Albuquerque Urban Transportation Planning Policy Board and various planning related city committees.

She has been a Guest Lecturer on planning at the University of New Mexico and in the Albuquerque Public School System. She received the Distinguished Public Service Award from the State of New Mexico in 1975 and the Distinguished Woman of New Mexico Award from the New Mexico Women's Political Caucus in 1976. She was Associate Director of the City of Albuquerque Municipal Development Department from 1978 through 1981 and is now a management consultant.

### George C. Dusang Jr., AIA

George C. Dusang Jr., AIA attended Texas A&M University and graduated with a Bachelor of Architecture degree from Texas Tech University in 1956. He is a Registered Architect in the State of Texas and holds an NCARB certificate. He is a Member of the American Institute of Architects, the Texas Society of Architects, and the Construction Specifications Institute. He is past president and secretary of the El Paso Chapter of the AIA and President of the El Paso Chapter of the CSI. Mr. Dusang is an active participant in church, civic, and service organizations in El Paso.

He is a Partner in the El Paso firm of Carroll, Dusang and Rand. The firm was founded as a partnership between Edwin W. Carroll and Louis Daeuble in 1945. Mr. Dusang joined the firm in 1956 and became a partner, along with Mr. Patrick Rand, in 1967. The firm has received two awards for Outstanding Architectural Design from the El Paso Chapter of the American Institute of Architects, an Award of Merit from the Texas Society of Architects for the Outstanding School Design Awards Program and an Honorable Mention from the Bell System National Design Awards program.





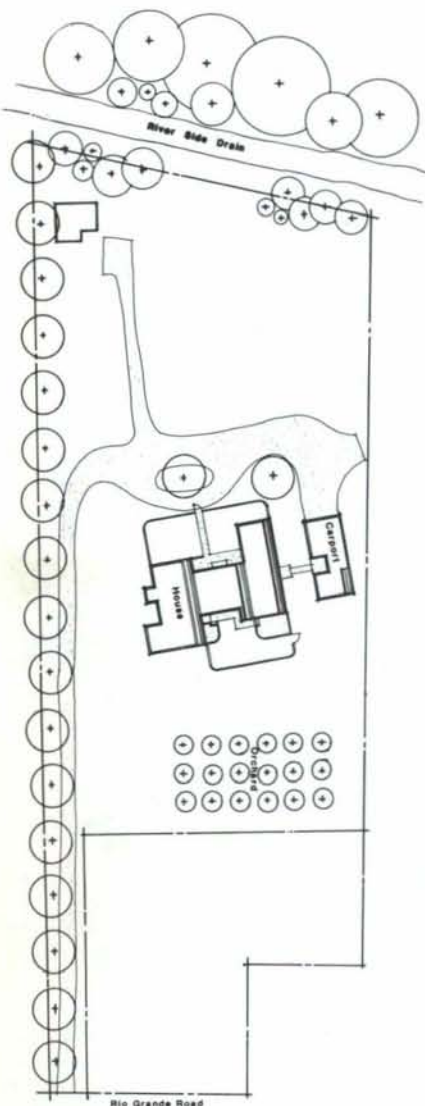
## Honor Award

Don Felts, A.I.A.  
Architect

## Residential Buildings

### The Sawyer House

Albuquerque, New Mexico



The project is a private residence on two acres of flat land in the Rio Grande bosque in north Albuquerque. The site is bordered by the riverside to the west and has a view of the Sandia Mountains to the east. There is cottonwood forest as well as alfalfa fields, orchards and vineyards around the site.

The two owners of the house have diverse working hours. Therefore, a major program requirement was to distinctly separate the living and sleeping areas. Another requirement was to provide outdoor garden areas with walls that shield the occupants from the immediate neighbors but allows visual access to the mountains in the distance.

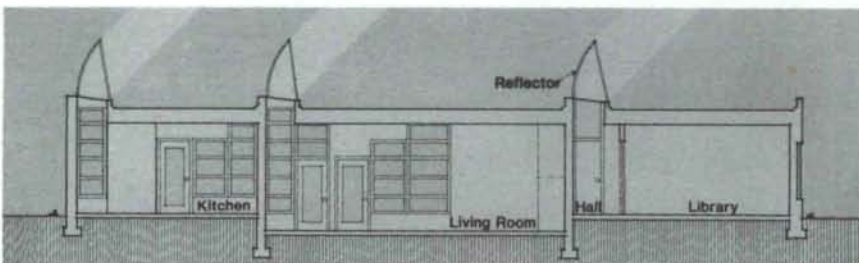
The owners enjoy cooking and home beer brewing. They required a spacious kitchen with commercial appliances and extensive preparation areas. They also required a pantry for storage of large vats, crocks and brewing supplies as well as a cool room for storage of beer.

New Mexico is known as the Land of Enchantment. Artist and architects the world over know that the essence of this enchantment is light. Light is a major design determinant for this project. Every space has a system of skylights with reflector/sunshades. The skylight/reflectors form bands of glass and mirrors that are expressed in the vertical wall plane as stepping windows.

Careful consideration is given to the locations of windows and skylights such that major wall and ceiling areas in every room receive a wash of daylight from at least two directions. The skylight reflector/sunshades are a striking architectural element that fills the house with warm light on cold winter days. In the summer, the adjustable reflector/sunshades are lowered to block the direct sun and keep the skylights in cool shade. The reflector mirrors literally glow at night with reflections of the interior light.

### Jury Comments:

This is a well done piece of modern architecture. Of all the projects, it has the highest consistency of design. It was commended for its technical solutions and harmonious interiors.



## The Sawyer House

### Albuquerque, New Mexico

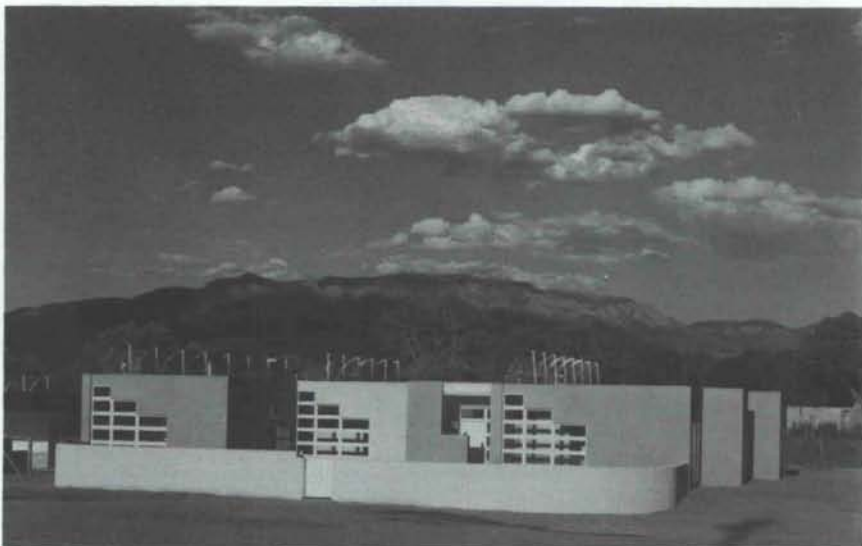
Client:  
Robert and Catherine Cassidy Sawyer

Architect:  
Don Felts, AIA, Architect  
Nancy Weinman, Associate

Structural Engineer:  
Design Professionals Inc.

Photographs:  
© Robert Reck

General Contractor:  
Ron Romero







### Awards:

Award of Honor, Rocky Mountain Region  
American Institute of Architects

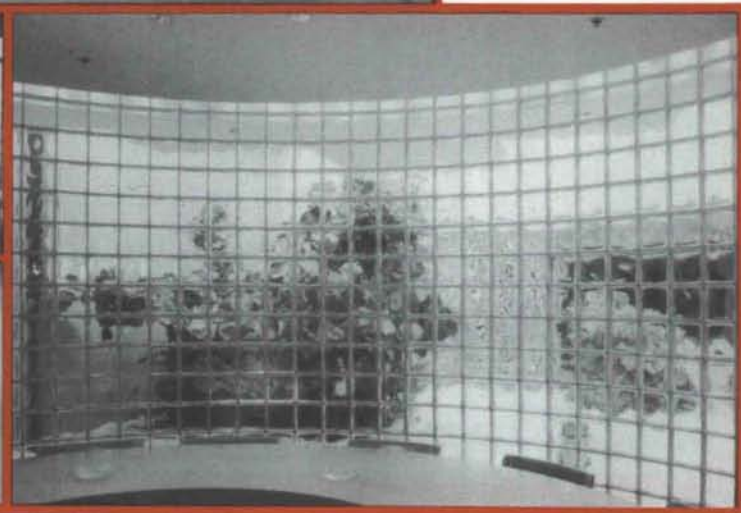
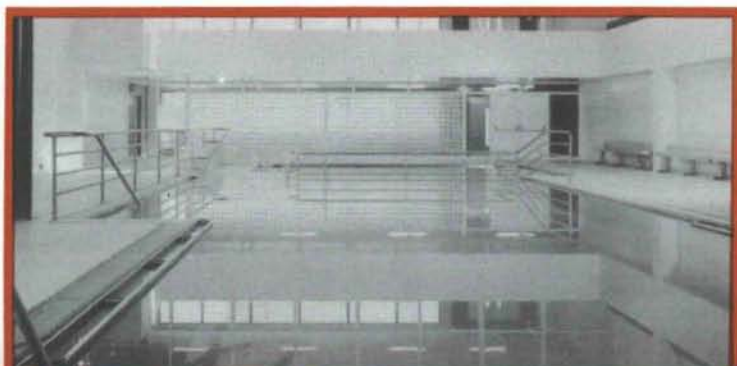
Award of Excellence for the Use of Daylight  
The International Association of Lighting  
Designers



PITTSBURGH CORNING  
**PCGLASSBLOCK®**  
PRODUCTS

# Glass Block for the 80's

## ...design with confidence



DISTRIBUTORS FOR THE STATE OF NEW MEXICO  
WAREHOUSED IN ALBUQUERQUE



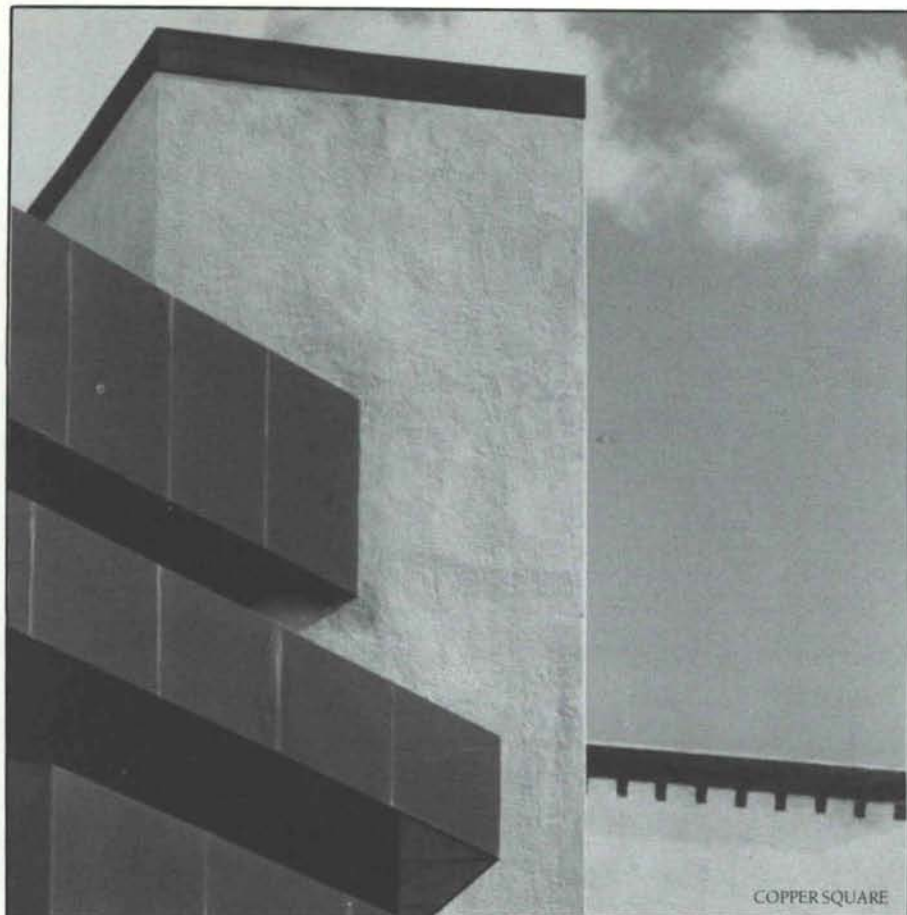
**CREGO BLOCK CO.**

P.O. BOX 6466  
ALBUQUERQUE, N.M. 87197

6026 SECOND STREET, N.W.  
(505) 345-4451







## PERSPECTIVES OF INNOVATION

What form innovation  
takes depends entirely  
on the point of view.

At Summit,  
we continue to  
solve old problems in  
new and creative ways.

It's a never-ending  
challenge...shaping  
everything we build.



**SUMMIT**CONSTRUCTION

Albuquerque, New Mexico  
505/842-8113

## **New Brick Pavers!!**

**Meeting ASTM C902 Class SX (Severe Weather)**

***Now Made in New Mexico!!!***

# **KINNEY BRICK COMPANY**

**4 Beautiful Colors  
Split or full 2¼" Pavers**

***ALSO OFFERING 1/2" AND 15/16" PAVERS AND ALL TYPES OF FACE BRICK.***

***Kinney Brick Co.***

***Albuquerque, NM***

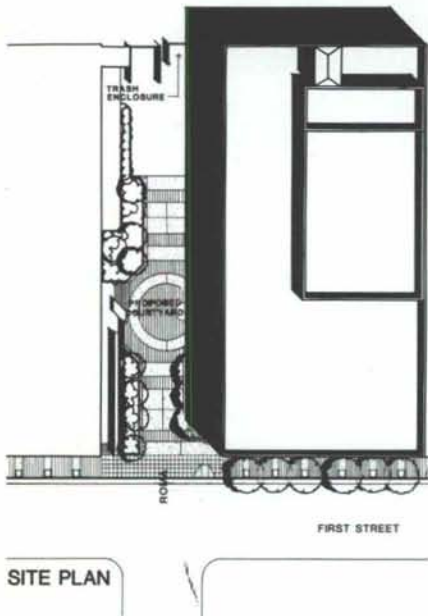
***(505) 877-4550***

## Honor Award

Boehning, Protz, Cook &  
Associates, P.A.

## Rehabilitation

Wool Warehouse Theatre and Restaurant  
Albuquerque, New Mexico



The original Wool Warehouse was built in 1929 and was used for the storage and sales of wool hides. Prior to being transformed into a theatre and restaurant, it was used by the City of Albuquerque for the storage of records. The renovation brings the first private entertainment facility to downtown Albuquerque since the early 1970's.

In order to accommodate the theatre, a substantial portion of the roof structure was removed. This allowed a full height proscenium opening with a fly loft to be constructed. It also allowed the addition of stepped seating platforms which accommodate 425 people. Careful attention was given to sight lines while still providing circulation space for dining. The stage area is designed to offer complete theatrical flexibility.

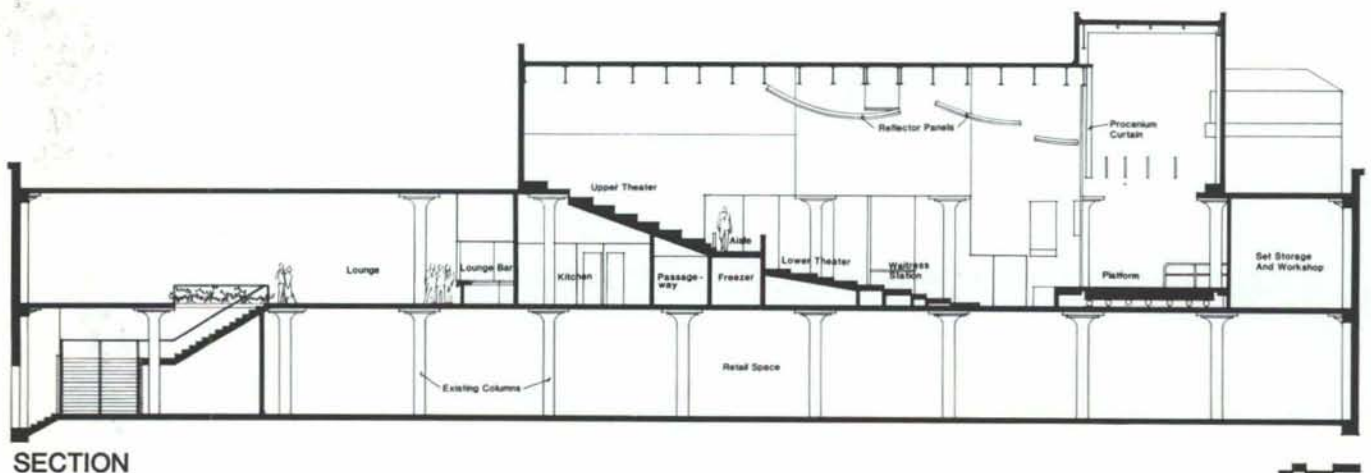
The kitchen is located so that it serves both the theatre and restaurant with little distraction to either. Elevators provide handicapped access to the theatre and restaurant and also provides service to the kitchen. A ground floor vestibule and lobby directs patrons past the administrative/ticket area and up the main stairway to the theatre and restaurant. There is a large second floor lobby and art gallery for theatre patrons.

Considerable effort was made to deal with the acoustical problems associated with the theatre. Especially those problems brought about by the close proximity to the railroad tracks, the kitchen, and the restaurant. The backstage area provides a sound barrier between the stage and railroad tracks. The walls around the stage and auditorium are designed to keep stray noise and light from the kitchen area out while reinforcing the actor's voices without electronic amplification.

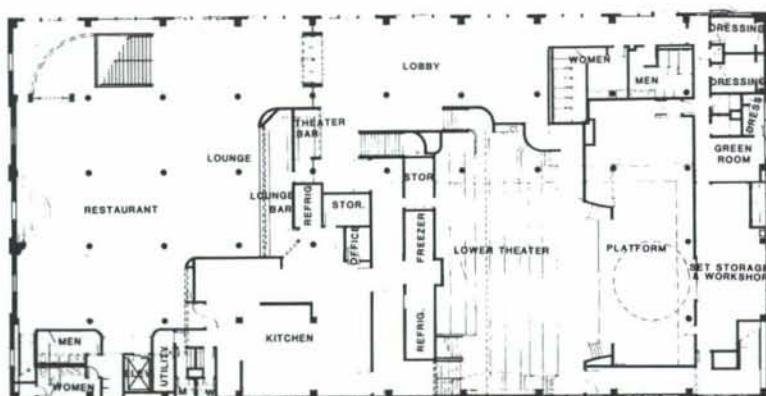
The interior motif reflects an art decor adaptation of Egyptian like columns with flared capitals. The motif is reflected in the carpet, ticket windows, bar mirror, etched glass theatre lobby doors, and entry elements.

### Jury Comments:

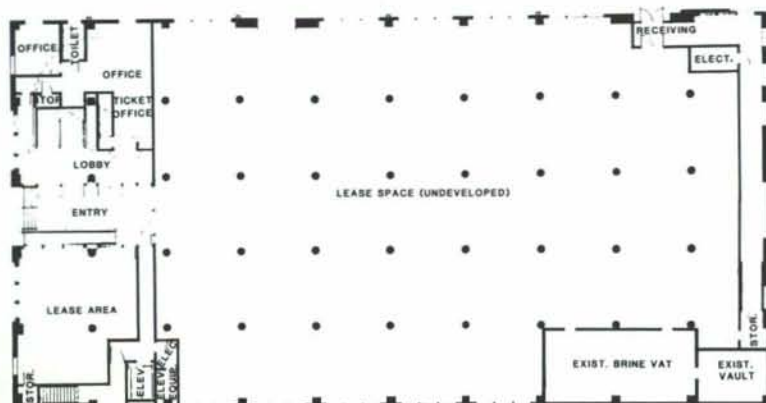
The jury commended the courageous decision to step forward and renovate this building. "This is a good conversion of an old building for an innovative new use". The jury liked the playful atmosphere brought about by the renovation.







Second Floor Plan



Ground Floor Plan

## Wool Warehouse Theatre and Restaurant Albuquerque, New Mexico

Architect:  
Boehning, Protz, Cook & Associates, P.A.  
Albuquerque, New Mexico

Interiors:  
Jean Ellet Pettingell, Designer ASID

Theatre:  
W. George Schreiber

Mechanical:  
Bridgers & Paxton Consulting Engineers

Electrical:  
Uhl & Lopez Engineers, Inc.

Landscape:  
Dennis C. Wilkinson, A.S.L.A.

Owner:  
George and Betty Luce

Contractor:  
Summit Construction, Inc.

Photos:  
Jerry Goffe

**Honor Award**  
**Gene Dyer**  
**Architect and Urban Designer**

**Urban Design**  
**The Seam "No Man's Land"**  
**Jerusalem, Israel**



This project is the urban design of No Man's Land, Jerusalem, Israel. The program is to develop a comprehensive plan that will integrate the politically separate sections of this ancient city. The designers had to anticipate modern traffic requirements, new buildings, and new circulation patterns. The end product had to imply a nonaligned public identity.

In order to establish the recognition of The Seam as an area of many uses for all people, a new circulation system weaves the halves of the city together. A major new entry, Road Number One, is the processional vehicular path to the central city. The road emphasizes the urban history along its path. Vital services to the Old City, via Damascus gate, will be strengthened to create an active multi-use zone. A major emphasis of the project is to illustrate that new developments can be sensitive to existing historic scale and texture. These new developments will strengthen the link by introducing new activity.

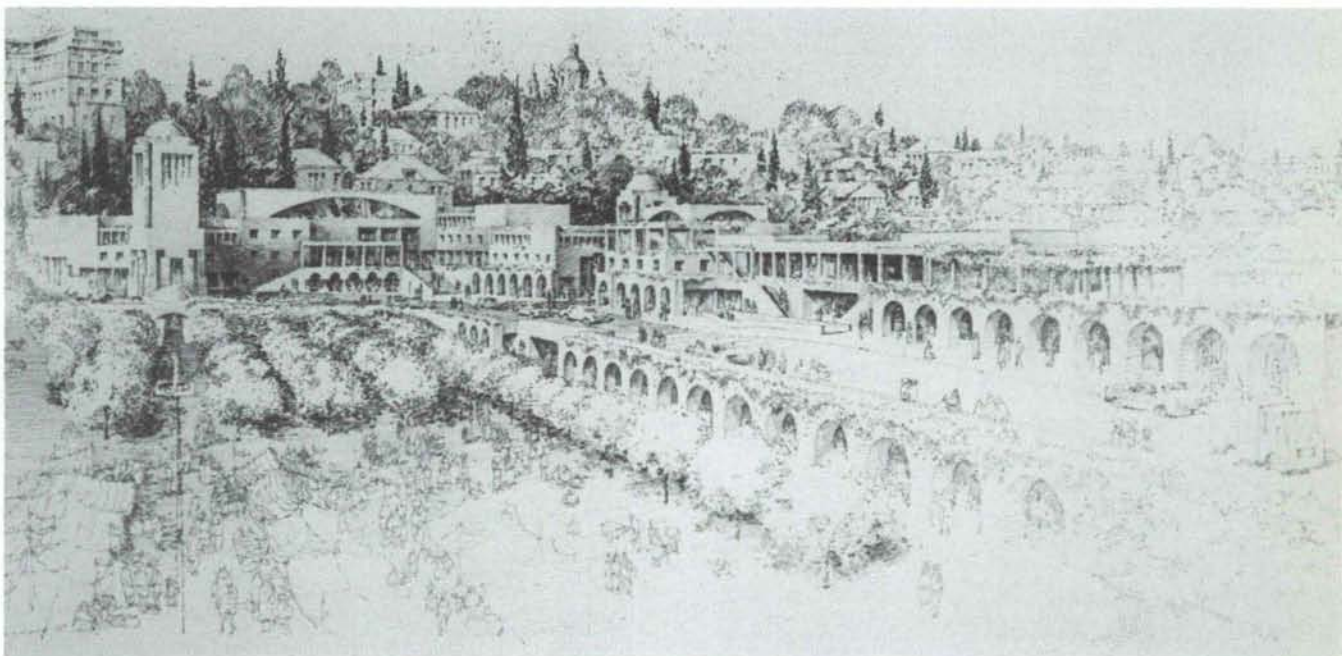
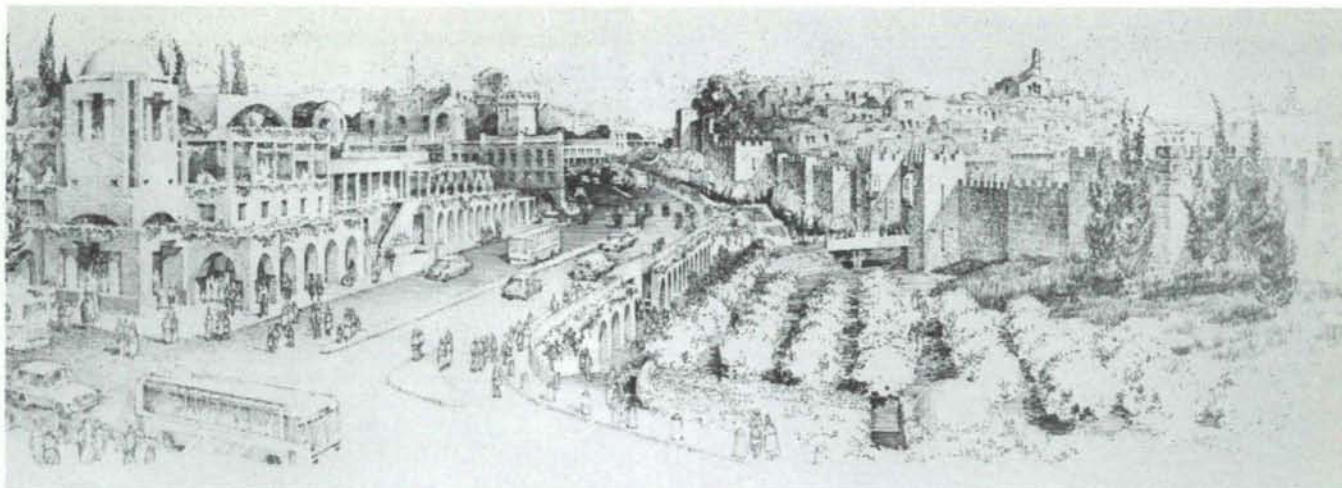
The first phase will include the major circulation infrastructure and will position vital public uses to create substantial pedestrian activity. Multi-use development will grow incrementally in planned stages as decided by the city.



**Jury Comments:**

This project was the best of all submitted. The Jury was impressed with the quality and clarity of the drawings. The excellent handling of people, vehicles and spaces in a harmonious setting with the surrounding environment was noted. This is one urban development which is clearly expressed in the design, and relates well to the topography.





# **The Seam The Urban Design of "No Man's Land" Jerusalem, Israel**

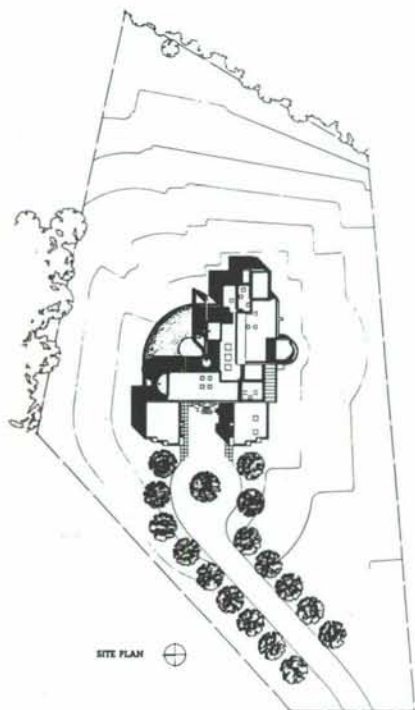
**Client:**  
The Mayor of Jerusalem, Teddy Kollek,  
The Office of the City Engineer, Jerusalem

**Architects:**  
Gene Dyer  
Albuquerque, New Mexico  
Todd Johnson  
Denver, Colorado  
Clifton Page  
Cambridge, Mass.  
**Assisted by:**  
Dorothy Dyer  
Ellen Johnson

**Associated Firm:**  
Dan Vind, Construction Coordinator  
Manager, Jerusalem.

**Renderers:**  
Gene Dyer  
Tod Johnson





Surrounded by the oasis-like vegetation of the Rio Grande Valley, this 4000 square foot residence clusters around a courtyard and encompasses spectacular views of the nearby mountain range.

The clients, a couple with two small children, were taken with the rural nature of the setting and wanted a home that would reflect the casual patterns of their lifestyle. Other factors shaping the program was their wish to capture the sheltering feeling of a traditional New Mexican courtyard dwelling while taking advantage of the views.

Entry to the house begins with passage through a court with intense natural light and large, simple defensive architectural forms into a series of loosely joined living spaces with modulated light. The form of the plan accentuates the importance of the courtyard by placing it at a pivotal location. In so doing, it becomes the focus of the family activities surrounding it and is transformed into the symbolic hearth of the home.

The house walls off the harsh sun and wind from the west and acts as a passive solar heat receptor on the south through the use of vented trombe walls and a greenhouse/solarium area. Clerestories at the living room, study and gallery spaces bring soft light into the home and are also used for ventilation.

A large beam of traditional turquoise color pierces the courtyard and terminates as a cascading source of water at the fountain. Materials of construction on the project include wood framing with stucco finish on the exterior. Interior forms and materials of brick flooring, white walls and exposed wood ceilings provide a sympathetic setting for the client's collection of Southwestern art and craft artifacts.

**Duncan Residence**  
**Village of Los Ranchos**  
**Albuquerque, New Mexico**

Architect:  
Westwork Architects, P.A.

Structural Engineer:  
Chavez-Grievs

Mechanical Engineer:  
Melichar and Associates

Electrical Engineer:  
Uhl and Lopez

Contractor:  
Don Carlson Construction Co.

Photography:  
Kirk Gittings/Syntax

FOLLOWING NEW MEXICAN TRADITION, THIS HOME EMBRACES THE ENERGY AVAILABLE FROM NATURAL RESOURCES. THE TECHNIQUES FOR CAPTURING THIS ENERGY ARE INTEGRATED DIRECTLY INTO THE FORMS OF THE ARCHITECTURE.

**WINTER SEASON**

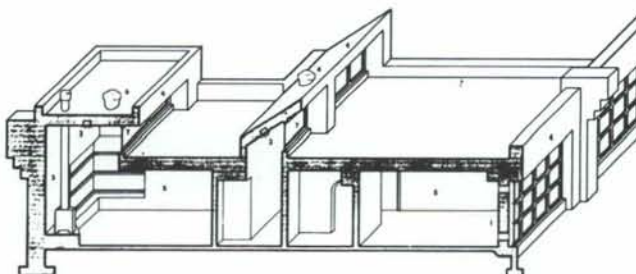
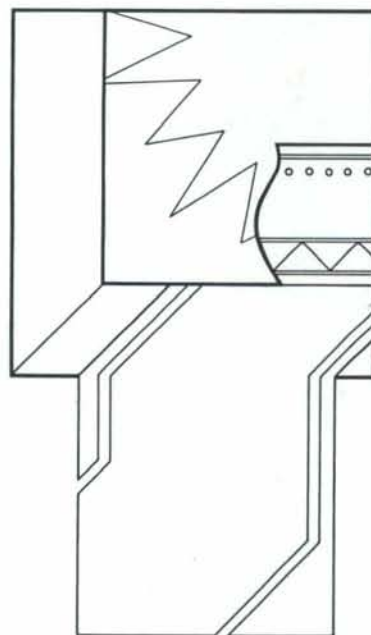
1. TROMBE WALL WITH HIGH AND LOW VENTILATORS AND DIRECT RADIANT HEAT FROM MASS WALL.
2. DESTRATIFICATION FANS RECLAIM WASTE HEAT AT HIGH CEILING AREAS AND RECIRCULATE IT TO THE LIVING SPACES.
3. MASS WALL ABSORBS HEAT FROM WOOD BURNING STOVE AND THE DIRECT GAIN FROM CLEDESTORY WINDOWS AND RE-RADIATES THE ENERGY TO THE LIVING SPACES.

**SUMMER SEASON**

4. OVERHANG SHADES GLASS TO PREVENT HEAT GAIN.
5. OPERABLE WINDOWS PROVIDE CROSS-VENTILATION THROUGH ROOMS.
6. VENTILATING FANS AT CLEDESTORY EXHAUST HEAT RISING FROM THE LIVING SPACES AND ENCOURAGE CROSS-VENTILATION.

**ALL SEASONS**

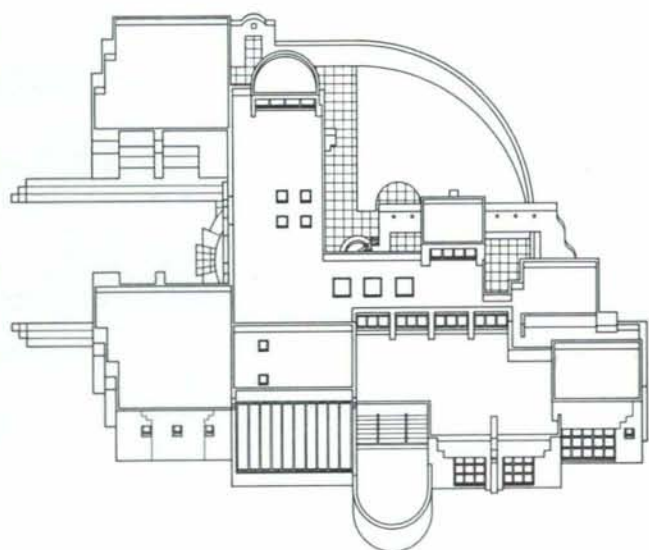
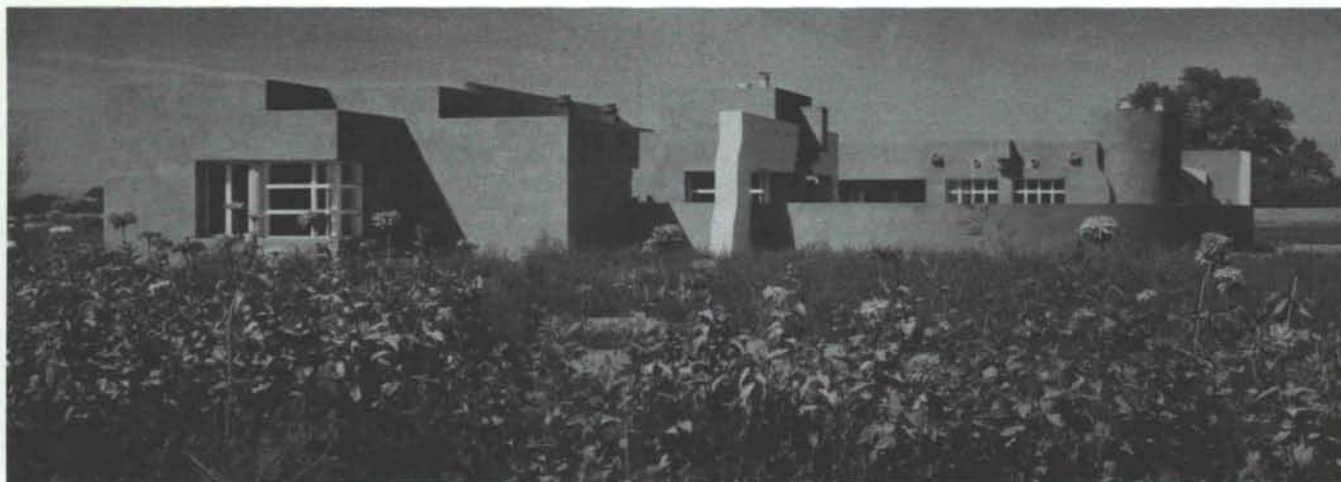
7. DEEP SET WINDOWS REDUCE GLARE AND WASH THE INTERIOR SPACE WITH SOFT NATURAL LIGHT REDUCING THE NEED FOR ARTIFICIAL LIGHTING.



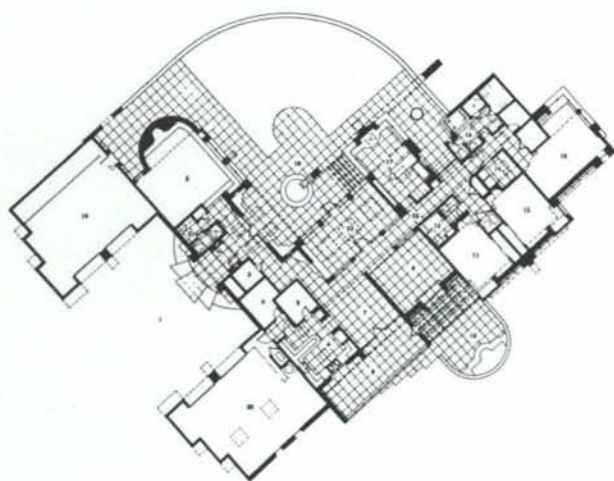
**Jury Comments:**

The jury especially liked this for its unique regional execution and sculptural qualities.

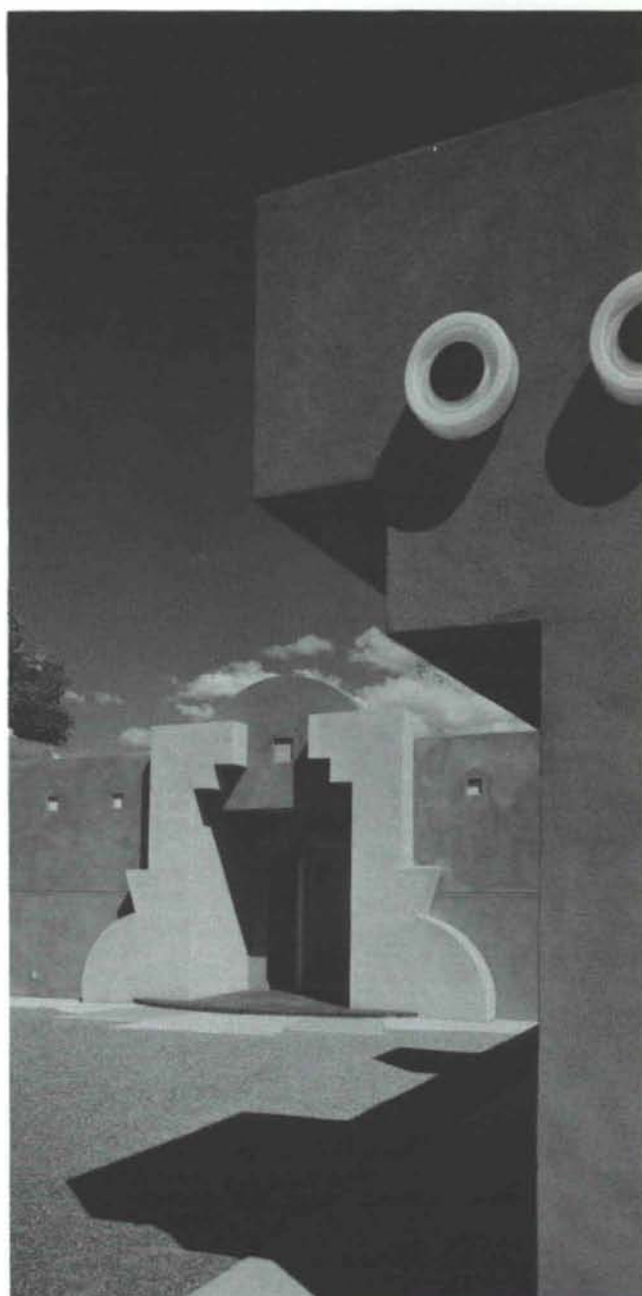




SOUTH ELEVATION



- |  |                               |
|--|-------------------------------|
| 1 ENTRY COURT                          | 13 CHILDREN'S BATH 7 m x 11 m |
| 2 LIVING ROOM / GUEST ROOM 16 m x 19 m | 14 LAUNDRY / SEWING 7 m x 9 m |
| 3 STORAGE 5 m x 8 m                    | 15 MASTER BEDROOM 11 m x 19 m |
| 4 DRESSING 10 m x 9 m                  | 16 MASTER BATH 8 m x 13 m     |
| 5 PAINTST 7 m x 8 m                    | 17 STUDY 11 m x 17 m          |
| 6 KITCHEN 12 m x 14 m                  | 18 COURTYARD                  |
| 7 DINING 12 m x 14 m                   | 19 GARAGE 23 m x 25 m         |
| 8 GREENHOUSE / SOLARIUM 9 m x 24 m     | 20 SHOP 23 m x 25 m           |
| 9 FAMILY 15 m x 16 m                   | 21 GUEST BATH 5 m x 9 m       |
| 10 PATIO                               | 22 GALLERY 4 m x 28 m         |
| 11 BEDROOM 11 m x 14 m                 | 23 SCREENED PORCH 10 m x 22 m |
| 12 BEDROOM 11 m x 14 m                 |                               |



## CONGRATULATIONS TO WESTWORK ARCHITECTS

for the award-winning design of the  
**DUNCAN RESIDENCE**

in the

Village of Los Ranchos de Albuquerque

**CARLSON HEATING AND AIR CONDITIONING, INC.**

*"Heating, Ventilating & Air Conditioning Contractors"*

6805 Academy Parkway West, NE

Albuquerque, New Mexico 87109

(505) 345-2564

# PUT YOUR KROY® TO GOOD USE. TRADE IT FOR A MERLIN®.



For a limited time, you can trade-in your old spin-and-print Kroy 80 E or any other lettering machine. You'll get a substantial allowance toward the purchase of a Merlin.

There's never been a better time to buy a better lettering system. One that's already very affordable and easy to use. And it's *five times faster* than your Kroy 80E.

Call us today for more information and a demonstration.



Merlin is a registered trademark of Variadynamics Systems, Inc. Kroy and Kroy 80 E are registered trademarks of Kroy, Inc.

## Maya Blueprint Inc.

"THE DRAFTING ROOM PEOPLE"

UPTOWN

5901 Lomas NE, Albuquerque, NM 87110 (505) 262-2046

DOWNTOWN

514 Central SW, Albuquerque, NM 87102 (505) 243-2822

# CURE YOUR WINDOW PAINS.



**SOUTH SUN PRODUCTS**  
is the stocking distributor of  
**ANDERSEN WINDOWS**  
to contractors.

**Come home to quality.  
Come home to Andersen.**



**South  
Sun  
Products**

1313 12th Street NW  
Albuquerque, NM 87104  
**843-7899**

South Sun Products will continue to furnish Naturalite Skylights and Janco Greenhouses to builders throughout New Mexico.



## Albuquerque Door Company

New Mexico's Largest Pre-Hung Door Supplier

CELEBRATING

OUR 20th YEAR OF SERVICE

- \* Interior and Exterior Flush Doors
- \* Exterior Metal Entry Doors
- \* Interior Panel Doors
- \* Classic Stile and Rail Entry Doors
- \* Windows
- \* Fireplaces
- \* Skylights
- \* Garage Doors
- \* Hollow Metal Doors & Hardware
- \* Closet Maid Ventilated Shelving
- \* Cabinets

FEATURING: Oak Exterior and Interior Flush and Panel Doors with Oak Jambs and Trim.

3600 Pan American Freeway NE

(505) 884-1601



**e s t i m a t i n g   i n c**

1420 Carlisle N.E.  
Suite 202A  
Albuquerque, N.M. 87110  
(505) 262-2681

## CONSTRUCTION COST ESTIMATES

EXPERIENCE  
TECHNOLOGY  
RESULTS

## BUILD INTERIOR &



## EXTERIOR WALLS

with initial savings that grow with age!

**Spectra-Glaze II**

The only glazed block with more than 3 decades of proven performance. Permanent, sanitary glazed finish. Practically no maintenance. Energy & insurance savings too. Meets Gov't specs. Wide range of color, texture, form, scale & pattern. © 4.4 Bu in SWEET'S.

PRE-FACED  
CONCRETE  
MASONRY UNITS

**NO REFURBISHING!**  
ASK FOR COST COMPARISONS  
AND CASE HISTORIES . . .

FEATHERLITE BUILDING PRODUCTS CORP.,  
Box 489, Lubbock, TX 79408

FEATHERLITE BUILDING PRODUCTS, Box 9977, El Paso, TX 79990

CREGO BLOCK CO., INC., 6026 2nd St. NW, Albuquerque, NM 87107

BUILDERS BLOCK, Box 1633, Roswell, NM 88201

BUILDERS BLOCK, Drawer FF, Las Cruces, NM 88001

806 / 763-8202

915 / 859-9171

505 / 345-4451

505 / 622-1321

505 / 525-3633

## FEEL THE DIFFERENCE.



### R4 WINDOWS

The difference is Heat Mirror™ transparent insulation built into Hurd aluminum-clad wood windows and patio doors. You can't see it, but you can feel it work. Heat Mirror reflects escaping heat back into your home in winter; rejects invading heat in summer.



Come see America's most beautiful wood window - Hurd. Come feel the difference that makes it twice as efficient as a standard double pane window. Our demonstration is proof. Your energy bill will be the payoff. You deserve to be Hurd.

 **Tortuga, Inc.**

3800 Hawkins Street N.E.  
Albuquerque, New Mexico 87109  
Telephone: (505) 345-2671

1808 2nd Street, Suite "I"  
Santa Fe, New Mexico 87501  
Telephone: (505) 982-2732

TO AVOID COSTLY  
POST-CONSTRUCTION  
INSTALLATION AND  
HEADACHES...



**ENGINEERS/  
ARCHITECTS —  
CALL TODAY  
FOR FREE  
CONSULTATION:  
292-2264**  
1621 Eubank Blvd NE  
ABQ., NM 87112

## VIDEO SCAN

- 15 years in security surveillance
- Oldest continuous business of its kind in NM

CALL VIDEO-SCAN  
BEFORE YOUR PROJECT  
LEAVES THE DRAWING  
BOARD!

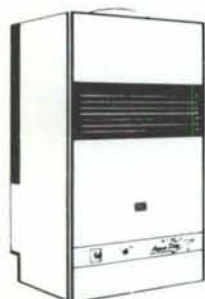


INTERIOR LANDSCAPING DESIGN  
LEASING • MAINTENANCE



**plant designs**

The Professional Plant People  
**(505) 888-5821**



**20% to 50%  
More Efficient!**

**AquaStar**  
TANKLESS GAS WATER HEATERS

**An Endless Supply  
of Hot Water!**

**Rio Grande Distributors, Inc.**  
8515 Rio Grande Blvd. NW  
Albuquerque, N.M. 87114  
**(505) 898-1391**

**DON CARLSON  
Construction Co.**

*/ Commercial Buildings  
/ Pre-Engineered Steel Building Systems  
/ Custom Homes*

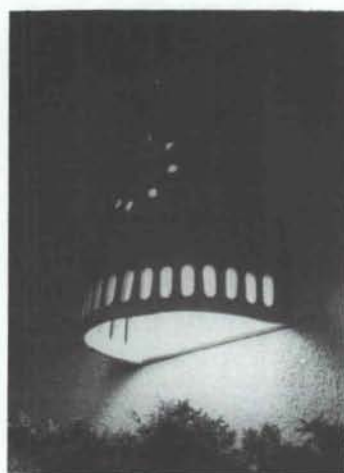
3214 Los Arboles, NE  
Albuquerque, New Mexico 87107  
**(505) 881-2962**



**ALBUQUERQUE GRAVEL PRODUCTS COMPANY**

**DEDICATED TO QUALITY  
AND SERVICE**

600 John Street S.E. Tel. (505) 242-5265  
P.O. Box 829 Albuquerque, NM 87103



**SANTA FE  
LIGHTS**

ARCHITECTURAL  
LIGHTING FIXTURES  
IN SOUTHWEST  
ADOBE STYLE  
INDOOR & OUTDOOR  
WALL, CEILING AND  
HANGING LIGHTS,  
CHANDELIERS &  
GARDEN LIGHTS

FRANK WILLETT / THE SANTA FE POTTERY  
323 Guadalupe Street, Santa Fe, New Mexico 87501  
(505) 471-0076 / (505) 983-9011



## AN UNCOMPROMISING CHOICE... between a fireplace and a woodstove

### ELEGANCE

Southwestern to Contemporary, BIS integrates easily into your interior decor.

### EFFICIENCY

Tested to 67% net efficiency, BIS heats like an airtight woodstove, far surpassing the 0-20% of traditional masonry and factory built fireplaces.

### CLEAN BURNING

BIS is the only zero clearance Built In Stove to pass the stringent 1988 Oregon emissions standards!

For details and our 16 page color BIS Designer Brochure, visit us...



2626 SAN PEDRO, N.E., ALBU.  
1814 SECOND ST., SANTA FE

884-1361  
983-5264



**THE FIREBIRD**

## Custom design for today's architectural needs.

*Growing With  
Albuquerque  
Since 1947*

### • Canvas Awnings

Commercial & residential. Custom designed & fabricated

### • Upholstering

Commercial, office, patio, auto, trucks, RV's

### • Tent Rentals / Sales / Repairs

Party canopies, big tops, camping

**RADER**  
**AWNING & UPHOLSTERING, INC.**

915 4th Street NW  
Albuquerque, New Mexico 87102  
505-243-4523



**KITTS ENTERPRISES INC.**

5815 EDITH BOULEVARD, NE  
ALBUQUERQUE, N.M. 87125

Alder, Ash, Basswood, Birch,  
Aromatic Cedar, Spanish Cedar,  
Cherry, Honduras Mahogany,  
Phillipine Mahogany, Maple, Red  
Oak, White Oak, Ponderosa Pine,  
Sugar Pine, Poplar, Sassafras,  
Walnut, and Willow.

Stairway Components, Adhesives,  
and Abrasives.

Custom Milling and Hardware.

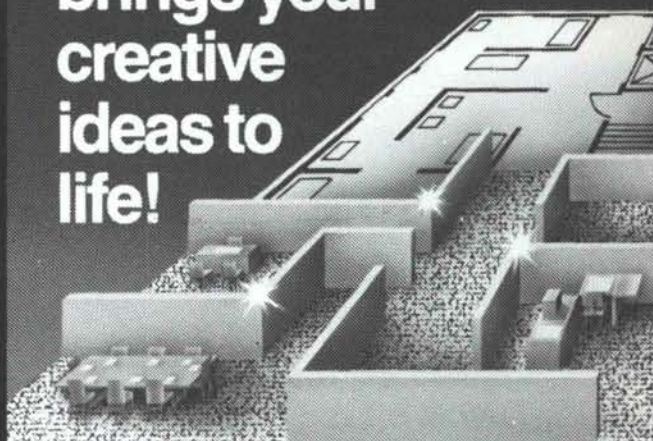
In Fact — Over 800 Items in Stock  
for High Quality, Architectural,  
Cabinet, Furniture, and Finish Work!

(505) 345-8135

New Mexico Toll Free:  
1-800-432-6820

Outside New Mexico Toll Free:  
1-800-545-6104

## Bigelow... brings your creative ideas to life!



You've agonized over the concept, sweated out the plans, now it's time for the compliments. And when you specify Bigelow underfoot, you know the rug won't be pulled out from under you. We can supply and install the Bigelow carpet to complement your plans!



american  
business  
interiors

612 Central Avenue, SW  
Albuquerque, New Mexico 87102  
(505) 883-2055

# Typ

the elegant wedding of word and image

# Art

925 Sixth Street NW, Suite 1 / Albuquerque / 505 242 9207



## BUILDERS BLOCK

Members:  
New Mexico Concrete  
Masonry Association  
National Concrete  
Masonry Association

***Quality Concrete Masonry Products  
and many allied building materials.  
Serving New Mexico and West Texas  
for over a quarter of a century.***

P.O. Box 1633  
Roswell, NM 88201  
505/622-1321

P.O. Drawer FF  
Las Cruces, NM 88001  
505/524-3633

Telephone  
El Paso  
915/532-9695

## Beauty & Performance... The Perfect Pair!

Weather Shield offers you both  
in the line of quality wood windows  
and steel insulated entry systems.



All Weather Protection - Always!



**Western Building Supply Co., Inc.**

4201 Los Angeles, NE

Albuquerque, New Mexico 87113

(505) 823-2500





**SIGHTS & SITES '86**  
The Albuquerque Development Tour

*presented by the*  
**Greater Albuquerque Chamber of Commerce**  
*Thursday, August 21*  
*and*  
*Friday, August 22, 1986*  
**Albuquerque Convention Center**

Sights & Sites '86 The Albuquerque Development Tour will kick off with a welcome cocktail reception and the opening of 76 exhibit booths for all participants on Thursday evening.

Friday morning, it's an early start as 600 people take a bus tour of Albuquerque's newest developments (including office, retail, medical, industrial, mixed use, government and residential projects.)

Following the tour will be another reception and an opportunity to revisit the exhibit booths. . . then on to lunch where C. Hastings Johnson, Vice President, Gerald D. Hines Interests, will speak on national development trends.

A symposium on Growth and Development will be presented in the afternoon. Speakers include: Steve Johnson, Johnson Development, Albuquerque; David Freshwater, Elan Development Corporation, Phoenix; and Ernest Randall, the Vantage Companies, Dallas.

Sights and Sites '86 is being co-sponsored by: Albuquerque Economic Development Inc., First National Bank, Rio Grande Title, and the New Mexico Chapter of NAIOP. Additional sponsorship opportunities are still available.

**COST:** Tour, lunch & symposium (full day) - \$85.00

Tour & lunch only (half day) - \$50.00

**CALL:** The Greater Albuquerque Chamber of Commerce (505) 842-0220



---

## Professional Directory

---

DURHAM • HARRIS • KILMER • NOLAN



605 W. COUNTRY CLUB ROAD

ROSWELL, NEW MEXICO 88201

(505) 623-5588



**RICARDO A. BACA, P.E., C.P.E.**  
Cost Consulting Engineer

1116 Wyoming Ave.  
El Paso, Texas 79902  
915/533-1176

In New Mexico  
Call  
505/883-9686



**CHAVEZ GRIEVES / CONSULTING ENGINEERS, INC.**

VICTOR J. CHAVEZ  
DAVID H. GRIEVES

4600 Montgomery NE  
Building C, Suite 101  
Albuquerque, NM 87109  
(505) 881-7376

*Listing space in this Professional Directory  
available through*



**Carleen Lazzell,**  
Advertising Editor

**NEW MEXICO ARCHITECTURE**  
8515 Rio Grande Boulevard NW  
Albuquerque, NM 87114  
505-898-1391

# Lujan Beltran

Architecture and Planning (505) 265-8885  
8009 Marble N.E. Albuquerque, New Mexico 87110



**boehning protz cook**  
110 second street s.w. — suite 500  
albuquerque, new mexico 87102

505 242-4044

architecture  
planning  
engineering

joe boehning aia pe  
president

d craig protz aia  
executive vice president

david a cook aia  
vice president

bob turner aia  
vice president



LONG and WATERS

ARCHITECTS • ENGINEERS • PLANNERS

210 La Veta NE

Phone (505) 255-5528  
Albuquerque, New Mexico 87108

PUGH & ASSOCIATES, AIA  
ARCHITECTURE AND PLANNING  
301 GOLD SOUTHWEST, SUITE 202  
ALBUQUERQUE, NEW MEXICO 87102

(505) 242-7572



ARCHITECTS  
ENGINEERS  
PLANNERS  
8000  
PENNSYLVANIA CIRCLE NE  
ALBUQUERQUE, N.M. 87110  
505/265-3645

**Schlegel** inc.  
**associates Lewis**  
architects • planners (505) 247-1529  
1620 Central Ave. SE Albuquerque, New Mexico 87106



j. david dekker  
architect  
marc schiff  
architect  
robert gerard heiser  
project manager

**design collaborative sw**

architecture • planning • energy consulting

105 fourth street sw, albuquerque, nm 87102

505 • 843 • 9639

(505) 327-3590  
(303) 926-3810  
**John eden** aia  
**architect**  
204 N. AUBURN, FARMINGTON, N.M. 87401  
BOX 494 EDWARDS, COLO. 81632



**DESIGN  
PROFESSIONALS, INC.**  
4301 CARLISLE BOULEVARD, NE  
ALBUQUERQUE, NEW MEXICO 87107  
(505) 881-6336

**ARCHITECTS/ENGINEERS**

## Consulting Services & Associates

PUBLIC RELATIONS • LEGISLATIVE • GOVERNMENTAL AFFAIRS

621 OLD SANTA FE TRAIL, SUITE 7  
SANTA FE, NEW MEXICO 87501

DICKI RYALS

(505) 983-2000 OFFICE



**DAVIS &  
ASSOCIATES  
INC.**

GENERAL  
CONTRACTORS

P O Box 2184  
Santa Fe  
New Mexico  
87501

(505)  
988-2894

WM. STANLEY DAVIS, P.E.  
President



CONSTRUCTION  
REAL ESTATE  
DEVELOPMENT

**PRADO VERDE, INC.**

(505) 988-2845

410 OLD TAOS HWY • SANTA FE, NEW MEXICO 87501

**Greene &  
Greene**

MORTGAGE  
COMPANY,  
INCORPORATED

LAURA A. LAGGE PRESIDENT

SUITE 214 • FIRST INTERSTATE BANK PLAZA  
125 LINCOLN AVENUE • SANTA FE, NEW MEXICO 87501  
PHONE (505) 983-5572



**BERNABÉ ROMERO**



**bernabé  
ROMERO**  
a.i.a  
architect

POST OFFICE BOX 5072  
SANTA FE, NEW MEXICO  
87502

200 WEST DE VARGAS  
TELEPHONE (505) 982-2123

*Lawyers Title of Santa Fe, Inc.*

422 W. San Francisco  
Santa Fe, N.M. 87501  
(505) 988-2233

James W. Catron  
Chairman of the Board

Phillip A. Griego  
President

Locally Owned — Nationally Underwritten

A. EUGENE SANCHEZ  
ARCHITECT AIA

621 OLD SANTA FE TRAIL  
SUITE 4  
SANTA FE, NEW MEXICO 87501

(505) 982-2700



Phone: (505) 471-8332

**LOPEZ ROOFING SERVICE**

ARTHUR LOPEZ  
Owner & Manager

P.O. Box 1944  
Santa Fe, New Mexico 87501

**Robert M. Strumor**

Attorney at Law

Suite 300 First Interstate Plaza 150 Washington Avenue  
Santa Fe, New Mexico 87501 (505) 988-9721

**ROBERT D. KRAUSE**  
Consulting Engineer

Santa Fe, New Mexico

Telephone 983-3107



Richard Yates  
Architects, Inc.

428 Sandoval  
Santa Fe  
New Mexico 87501  
505/988-1913

## ABC'S ACCORDING TO THE BYRNE COMPANY

- A'S FOR Alumax** - performed metal roofing & siding (our new line)  
**B'S FOR Byrne** - the folk's who represent all these fine products  
**C'S FOR Colorklad** - flat sheet metal roofing  
**I'S FOR Insulcrete** - exterior with insulating qualities  
**N'S FOR Naturalite** - domed and custom sky-light (call for information)  
**P'S FOR Phone Number** 505-881-0141 (call us - please)  
**R'S FOR Rmax** - rigid isocyanurate roof insulation  
**R'S FOR Remember** - to use (and specify) the products in the Byrne Notebook.



**New Mexico  
Society of Architects  
Annual Conference  
to be in  
Santa Fe, New Mexico  
October 9, 10, 11, 1986**



Published bi-monthly by New Mexico Society of Architects, American Institute of Architects, a non-profit organization. Editorial Correspondence should be addressed to John P. Conron, Box 935, Santa Fe, N.M. 87504. (505) 983-6948.

**Editorial Policy:** Opinions expressed in all signed articles are those of the author and do not necessarily represent the official position of the publishing organization.

*Additional copies of NMA available from John P. Conron FAIA/FASID, P.O. Box 935, Santa Fe, N.M. 87504.*

**Change of address:** Notifications should be sent to New Mexico Architecture, Box 935, Santa Fe, N.M. 87504 (505) 983-6948 at least 45 days prior to effective date. Please send both old and new addresses.

**Subscriptions:** Write Circulation, New Mexico Architecture, Box 935, Santa Fe, N.M. 87504. Single Copy \$2.50. Yearly subscription \$10.00.

**Advertising:** Send requests for rates and information to Carleen Lazzell, Advertising Editor, 8515 Rio Grande Boulevard, N.W., Albuquerque, N.M. 87114, 505/898-1391.

**INDEX OF FIRMS** who make possible the publication of NMA and the page upon which their message is found:

Albuquerque Door Company	19
Albuquerque Gravel Products Company	20
American Business Interiors	21
APS Estimating Inc.	19
Architectural Woodworking, Inc.	27
Builders Block	22
Businessland	4
Byrne, The Company	26
Carlson, Don Construction Co.	20
Carlson Heating and Air Conditioning, Inc.	18
Crego Block Co.	10
Don J. Cummings Kitchen Equipment	27
Featherlite Building Products Corp.	19
Firebird, The	21
Hydro Conduit Corp.	28
Innovative Concepts, Inc.	6
Jean Ellett Pettingell	27
Kinney Brick Company	11
Kitts Enterprises, Inc.	21
Kohler	Insert
Lumins Lighting Specialties	27
Mason Contractors Association of New Mexico	2
Mesa Blueprint, Inc.	18
New Mexico Travertine	4
Plant Designs	20
Rader Awning & Upholstering, Inc.	21
Rio Grande Distributors, Inc.	20
Roswell Imported Cars, Inc.	5
Santa Fe Lights	20
Signal Systems	5
South Sun Products	18
Summit Construction	11
Tortuga, Inc.	19
TypArt	22
Video Scan	20
Western Building Supply Co., Inc.	22
Zomeworks Corporation	5

Printed by Hall-Poorbaugh Press, Inc., Roswell, New Mexico



# LUMINS

LIGHTING SPECIALTIES

Albuquerque  
265-2145  
Santa Fe  
984-1054

**A unique collection of  
foreign, domestic and  
southwestern light fixtures**

CUMMINGS

**DC**

KITCHEN  
EQUIPMENT

## OUR KITCHENS ARE GOOD FOR BUSINESS!

The architectural staff of Cummings Kitchen Equipment will design *AND* equip your commercial kitchen.

After 24 years of supplying building equipment in the Southwest, Don J. Cummings Company will now provide total design & equipment for:

- Commercial Restaurant Facilities
- Health Care Dietary Facilities
- Hotel and Motel Kitchens
- Resort and Recreational Dining
- Institutional Food Service
- Bars and Lounges

**884-1300**

2914 Girard Blvd. NE • Albuquerque, NM 87107

MAILING ADDRESS:

P.O. Box 3486 • Albuquerque, NM 87190



**Architectural Woodworking, Inc.**

P.O. BOX 9043 / 87119 • 1920 COLUMBIA SE / 87106  
ALBUQUERQUE, NEW MEXICO  
(505) 242-8774



*Contact us for your quality  
cabinetry and millwork*

*Jean Ellett  
Pettingell*

A.S.I.D.

AND ASSOCIATES

**INTERIOR DESIGNERS  
FOR THE WOOL WAREHOUSE**

505-242-5453 514 CEDAR S.E.  
ALBUQUERQUE, NM 87106

DESIGNERS AND SPECIFIERS



Postmaster: Address Correction Requested  
New Mexico Architecture  
5545 Rio Grande Blvd., N.W.  
Albuquerque, NM 87114

Bulk Rate  
U.S. Postage  
PAID  
Roswell, N.M.  
Permit No. 4

# in context . . . *Architectural Precast*



FINE ARTS LIBRARY B52  
UNM

ALBUQUERQUE NM 87131

U.N.M Family Practice Center  
Dale Crawford & Assoc.



**HYDRO CONDUIT CORPORATION**

2800 Second Street SW • Albuquerque, NM 87103 • Phone 247-3725