

New Mexico

ARCHITECTURE

JULY/AUGUST 1986

\$3.00

Fine Arts
NA
1
N4
v. 27
no. 4

SERIALS DEPT.

SEP 09 1986

ZIMMERMAN LIBRARY

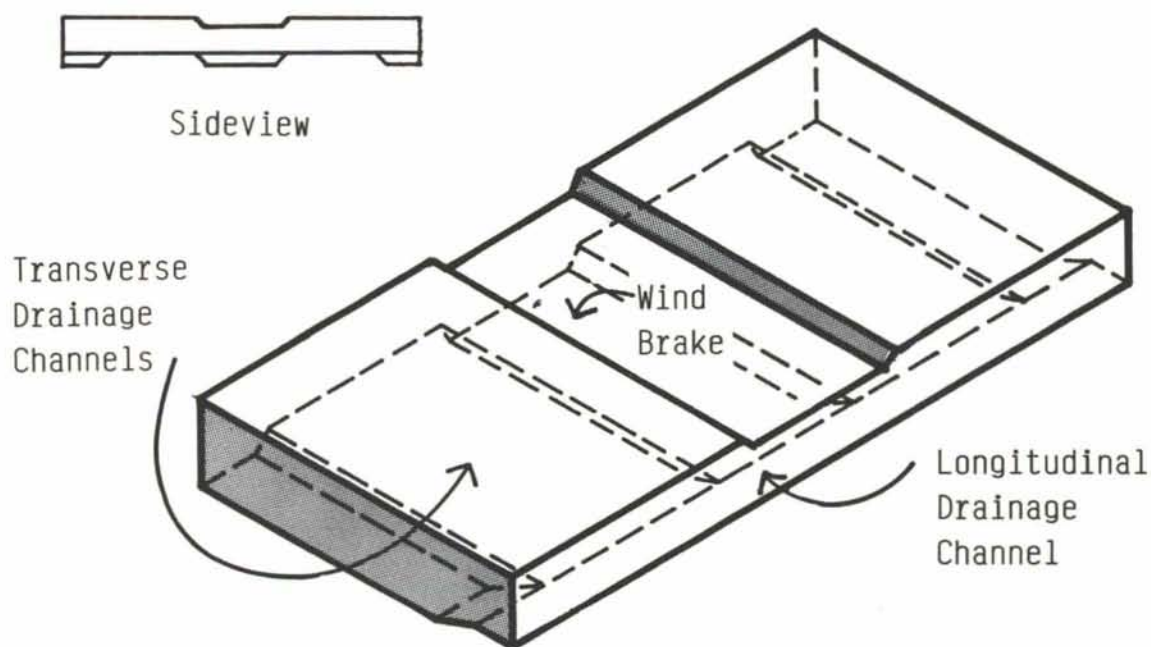


awards issue — part two

New Mexico has made Crego No. 1.

**Crego announces another first
for New Mexico!**

**A locally manufactured
Roof Ballast Block
for single-ply roof membrane systems**



- . NOMINAL SIZE: 8"x2"x16" (1.15 psf)
- . WEIGHT: 13 lbs. \pm $\frac{1}{2}$ lb. psf
- . BEARING SURFACE: 34.87 SQ. IN.
- . PERCENTAGE OF BEARING SURFACE: 27%

- . PROTECTS AGAINST PUNCTURES
- . DEFLECTS ULTRA-VIOLET RAYS
- . RESISTS WIND UPLIFT
- . PROVIDES FIRE RESISTANCE
- . ALLOWS EASY INSPECTION OF MEMBRANE
- . PROVIDES POSITIVE DRAINAGE

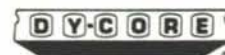


CONCRETE MASONRY

CREGO BLOCK CO.

P.O. BOX 6466
ALBUQUERQUE, N.M. 87197

6026 SECOND STREET, N.W.
(505) 345-4451



PRESTRESSED
CONCRETE



nma

• vol. 27 no. 4 • july-august 1986 • new mexico architecture

This issue:

Continues the presentation of the New Mexico Society of Architects, AIA annual awards program winners, which began in the May/June issue.

In addition we present the two New Mexico firms who were honored by design awards given at last fall at the Western Mountain Region, AIA Annual Conference.

□ □ □ □

The cover of this issue of **NMA** has been made possible by the kind generosity of Antoine Predock, FAIA.

□ □ □ □

New Mexico Architecture magazine continues to grow with increasing support from businesses and professional firms, who see the magazine as a valuable vehicle for the presentation of their products and services. We need advertising support to produce this magazine and I, representing the New Mexico Society of Architects and the entire magazine staff, appreciate that support. I cannot thank our advertisers enough. Without them we cease to publish. With their continued support we publish on. And with increased advertising, I hope to be able to increase the number of pages in the magazine to 32 by the end of this year. Carleen Lazzell is working hard to achieve that goal as you can see by the increased number of advertisements in this issue of **NMA**.

Thank you, advertisers.

In addition I want to thank our fine printer, Hall-Poorbaugh Press, Inc. and its owner, Tom Hall, for continuing to help us through the past year, and some months, as we have endeavored to bring the support dollars up to the point of working off our past debts.

Thank you, Tom.

Sincerely: *John P. Conron, Editor*

☞ The Editor's Column 3

NMSA Honor Awards-continued — 1986 7

Private Residence
Antoine Predock, FAIA 8

La Posada de Albuquerque
Boehning, Protz, Cook & Associates, P.A. 10

The Robert Lynn Residence
Edith Cherry/D. James See 12

Western Mountain Region Awards
The Sawyer House
Don Felts, AIA 15

Western Mountain Region Awards
Treaster Gray House
Antoine Predock, FAIA 16

Professional Directory 23

Advertiser's Index 26

(Cover — Treaster Gray House — Antoine Predock, FAIA — © Robert Reck. Photographer)

—Official Publication of the New Mexico Society of Architects, A.I.A.— Society Officers

President—Don P. Schlegel, FAIA
President-Elect—Randall L. Kilmer
Secretary/Treasurer—John Eden
Director—Peter Allen
Director—Beryl Durham
Director—Wayne Lloyd
Director—Roger B. Lujan
Director—Steve Newby
Director—Richard C. Scott
Director—William Friemuth

New Mexico Architecture - Committee

John P. Conron, FAIA, — Editor
Carleen Lazzell — Advertising Editor
Van Dorn Hooker, FAIA — Chairman
George Anselevicius, FAIA
Marjorie Hooker, AIA
Christopher Larsen, AIA
Charles E. Nolan, Jr., AIA
George C. Pearl, FAIA
David Abeles Pfeffer, AIA
Glade F. Sperry, Jr., AIA
V.B. Price — Former Editor "New Mexico Magazine"
Don P. Schlegel, FAIA
Christopher Wilson, Architectural Historian

International Standard Serial Number—0545-3151

JIM BISHOP, BUILDER



Tom Stockebrand says: "Unusual design made our home a very demanding construction job, but Jim Bishop's team came through for us within budget and on time. Jim is a thorough professional who enjoys working with complex and challenging plans. He can think on his feet and comes up with good, sensible solutions. His excitement for solar construction was also very important to us."

New construction, expansion, "Sunspace" additions, tenant improvements and historic restoration. For clients of vision and taste.

BUILDINGS THAT RISE TO YOUR CHALLENGE... AND EXCEED YOUR EXPECTATIONS

Jim Bishop, General Contractor, Inc.

1224 Second Street, NW • Albuquerque, NM 87102 • (505) 242-4677

for the finest...



...travertine and marble quarried and fabricated in New Mexico for

- flooring
- interior and exterior cladding
- feature panels
- furniture and accessories

NEW MEXICO TRAVERTINE



4741 Pan American Freeway NE
Albuquerque, NM 87109 Telephone 505 345 1327

HOW TO GET HIGH QUALITY TYPE EVEN WHEN YOU'RE LOW ON TIME.



With the Merlin[®] electronic lettering system from Varitronics, your finished blueprints and technical drawings can have professional quality lettering. No matter how tight the deadline.

Merlin gives you a fast, easy and affordable way to produce high quality type on adhesive-backed tape. And it's *five times faster* than spin-and-print machines.

Call us today for more information and a demonstration.


Merlin[®]—a registered trademark of Varitronics Systems, Inc. Kroy[®]—a registered trademark of Kroy, Inc.

Ask about our Kroy trade-in allowance.

Meza Blueprint Inc.

"THE DRAFTING ROOM PEOPLE"

UPTOWN

5901 Lomas NE, Albuquerque, NM 87110 (505) 262-2016

DOWNTOWN

514 Central SW, Albuquerque, NM 87102 (505) 243-2822

**A unique collection of
foreign, domestic and
southwestern light fixtures**

CUMMINGS

DC

KITCHEN
EQUIPMENT

OUR KITCHENS ARE GOOD FOR BUSINESS!

The architectural staff of Cummings Kitchen Equipment will design *AND* equip your commercial kitchen.

After 24 years of supplying building equipment in the Southwest, Don J. Cummings Company will now provide total design & equipment for:

- Commercial Restaurant Facilities
- Health Care Dietary Facilities
- Hotel and Motel Kitchens
- Resort and Recreational Dining
- Institutional Food Service
- Bars and Lounges

884-1300

2914 Girard Blvd. NE • Albuquerque, NM 87107

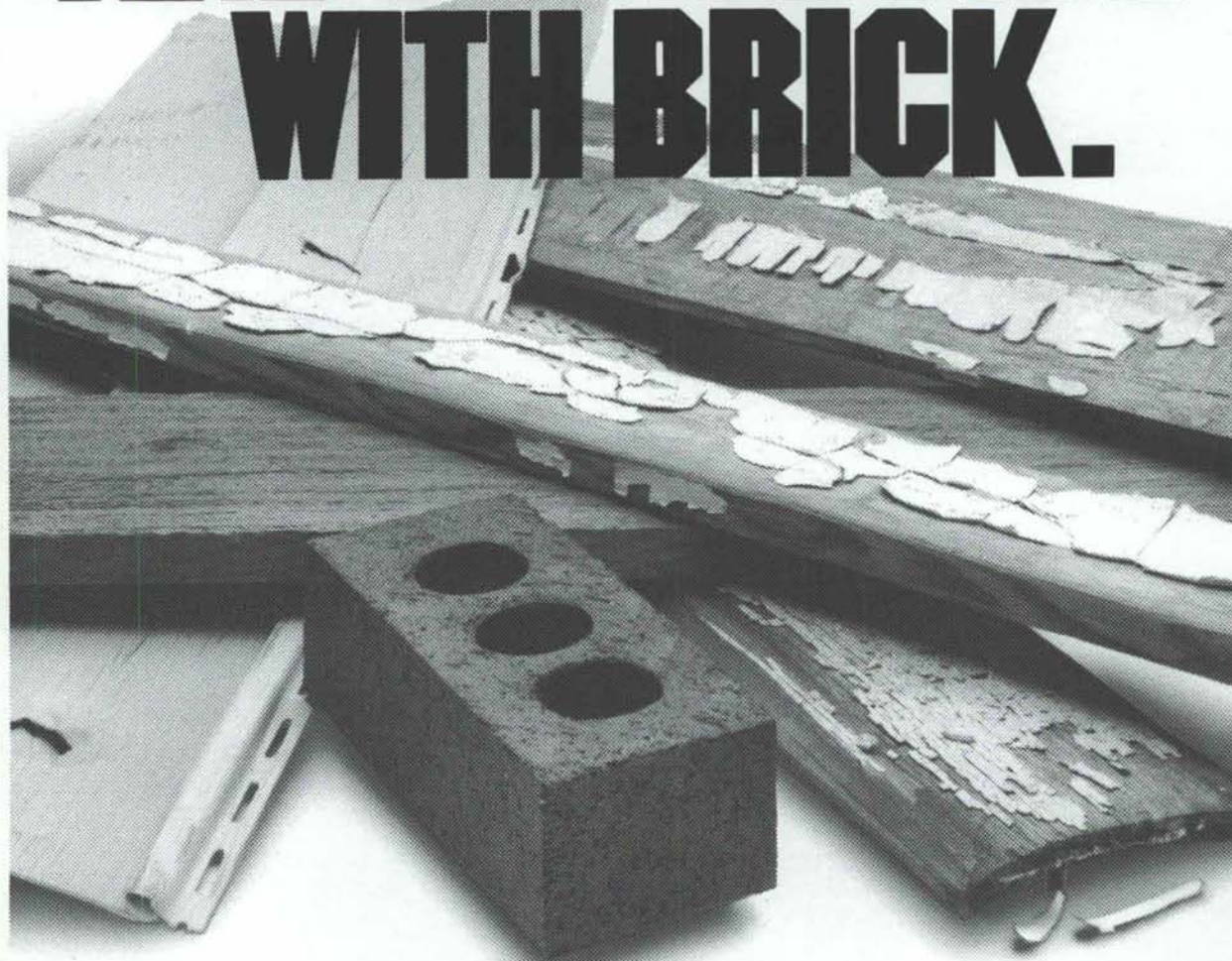
MAILING ADDRESS:

P.O. Box 3486 • Albuquerque, NM 87190

LUMINS LIGHTING SPECIALTIES

Albuquerque
265-2145
Santa Fe
984-1054

COMPARE, AND YOU'LL SIDE WITH BRICK.



Whether you're buying, building, or remodeling your home, take a good look at brick. Because the good looks of brick last. Brick doesn't fade, peel or dent like other siding. It never needs to be painted. Never needs to be cleaned. And brick's reputation for energy-efficiency and quality brings a higher resale value. That's the beauty of brick. For more information about the benefits of brick, contact your local brick manufacturer or dealer today.



BUILD A BETTER LIFE WITH BRICK.

MASON CONTRACTORS ASSOCIATION OF NEW MEXICO



YOUR FINEST HOUR.

Out of the blue comes the new Hourglass® Bath™ Whirlpool. The Kohler that's going to make you a hero in your own time.

Because not only is it the right size (5'x30" x 17") and right material (acrylic, formed into a distinctive hourglass shape), but it's available in seven beautiful

colors. Plus white. (Parchment is shown with Alterna™ faucets.)

And it's topped off with our optional four-jet whirlpool. To give you the soothing luxury of Kohler hydro-massage. All at a moderate price.

The Hourglass® Bath Whirlpool. It's a beautifully sized, lightweight,

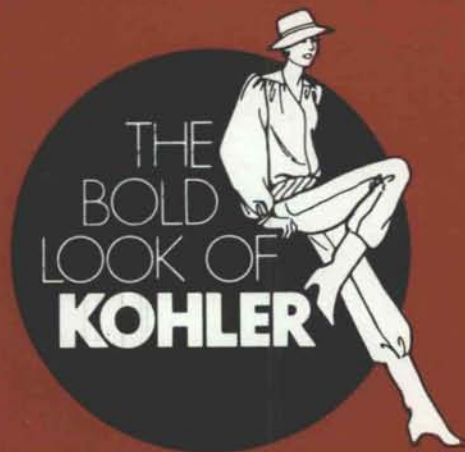
colorful, very luxurious personal comfort product that is sure to win in the Battle of the Bath.

It's the stuff heroes are made of. Your finest hour indeed!

For more information about this and all the products for kitchen, bath and powder room, write Kohler Co., Dept. RJO, Kohler, Wisconsin 53044.

THE BOLD LOOK
OF **KOHLER**

**Come
and see...**



in the showrooms at



PHC Supply Company

1000 Siler Park Road • Santa Fe, N.M. • Phone: 471-1811

Active

PLUMBING SUPPLY

1500 Candelaria N.E. • Albuquerque, N.M. • Phone: 345-8587

SHOWROOM HOURS: WEEKDAYS 8:00-5:00, SAT. 8:00-12:00

LARGEST WHOLESALE DISTRIBUTORS OF KOHLER PLUMBING PRODUCTS IN NEW MEXICO



1985 Honor Awards -continued

The New Mexico Society of Architects Awards Program is a highly respected tribute to architectural excellence. The selection is made on the basis of design excellence, sensitivity to human and functional needs and to the built environment. The purpose of this Awards Program is to encourage a high level of architectural design, recognize the clients and architects who have distinguished themselves by their accomplishments and to inform the public of the high architectural quality being brought to bear in the physical environment.

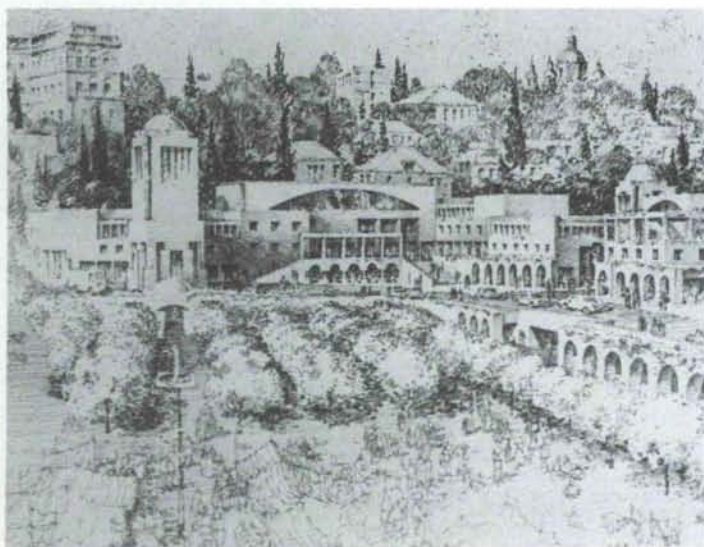
The following awards have been printed in the previous issue of *New Mexico Architecture*.



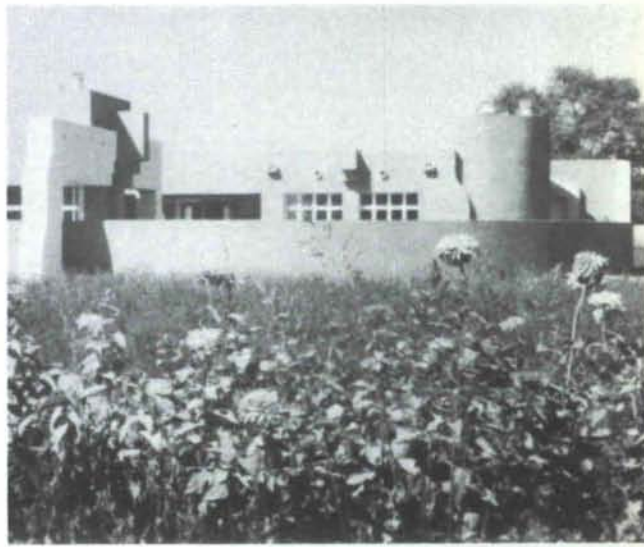
The Sawyer House
Don Felts, AIA



Wool Warehouse Theatre and Restaurant
Boehning, Protz, Cook & Associates, P.A.



The Seam "No Man's Land"
Gene Dyer, Architect and Urban Designer



Duncan Residence
Westwork Architects, P.A.

Three additional awards follow

Honor Award
Antoine Predock, FAIA

Residential Buildings
Private Residence
Albuquerque, New Mexico

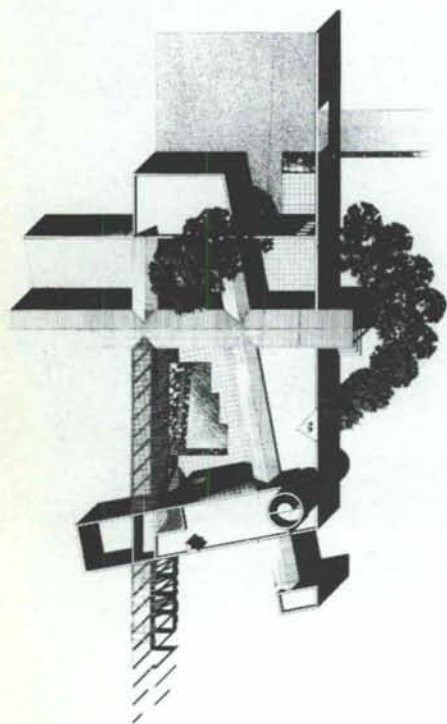
This private residence is located in the North Valley of Albuquerque. Albuquerque's North Valley is charged with landscape memories. Over time, the widely meandering course of the now channeled Rio Grande left a rich residue of agricultural land. The once abundant croplands of the Rio Grande's eastern banks have diminished with agricultural development pressures.

The house responds gently to the valley agricultural ambiance. It extends into the alfalfa covered site with a horizontality appropriate to the sweep of the valley and the mountains beyond. A rural valley feeling is projected through the pitched roofs, long, low massive walls and the promised inner gardens.

A skewed grid of linear pavilions like pieces align mountain views while maintaining the implications of the orthogonal pattern of the surrounding fields. A pool/patio forms the centerpiece for the surrounding living/kitchen pavilions and a shady pergola. The house brings to mind the double courtyard Pompeian house as well as the early New Mexican hacienda with its figure eight plan.

The intersecting pitched roof pavilions guide circulation doubling on the east-west axis as a solar greenhouse. Retreating to the cool north side of the house, the sunken living area maintains winter southern exposure via the greenhouse pavillion. Bedrooms are stacked in a two story "house" with the upper level master suite accessed by a circular stair contained in a silo-like tower. A Master bedroom terrace stair connects back to the central court level.

Materials include stucco on concrete masonry units, metal roofing, redwood trellises, horizontal wood framing and exposed wood trusses, as well as a passive solar greenhouse.



Private Residence
Albuquerque, New Mexico

Architect:
Antoine Predock, FAIA
Albuquerque, New Mexico

Project Architect:
Geoffrey Beebe

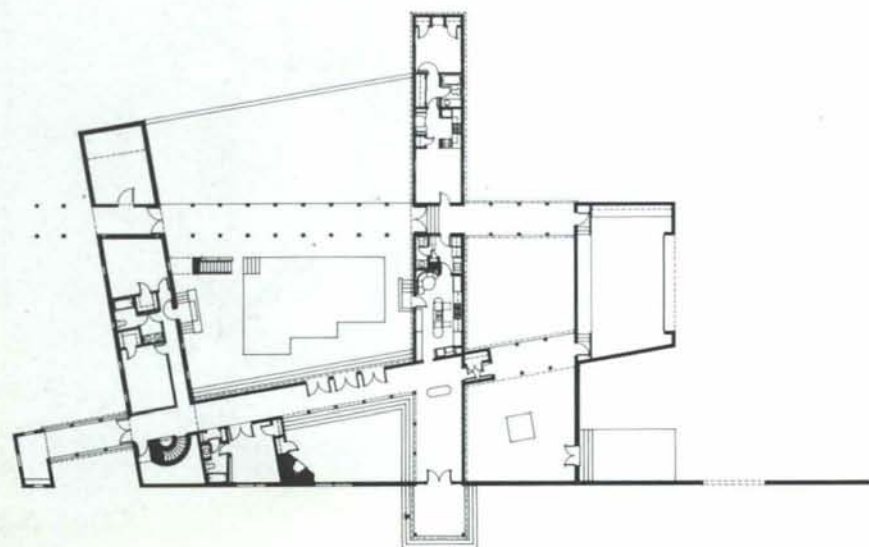
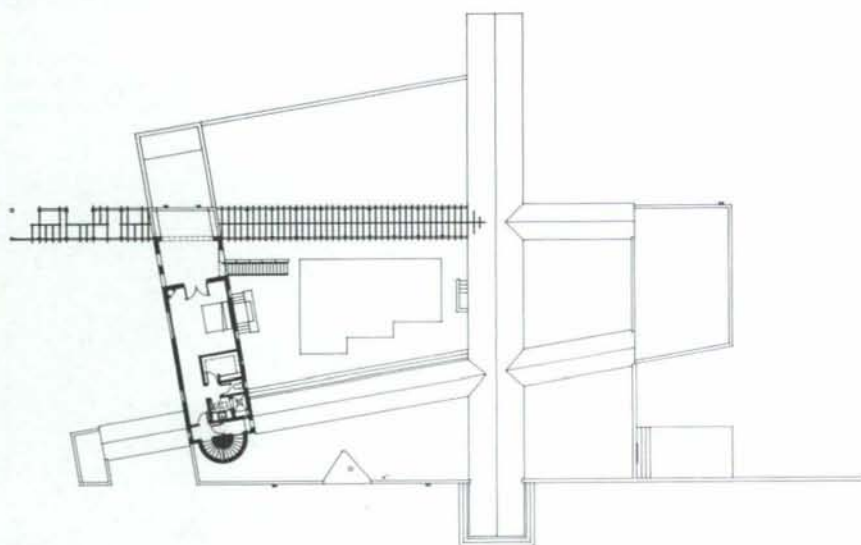
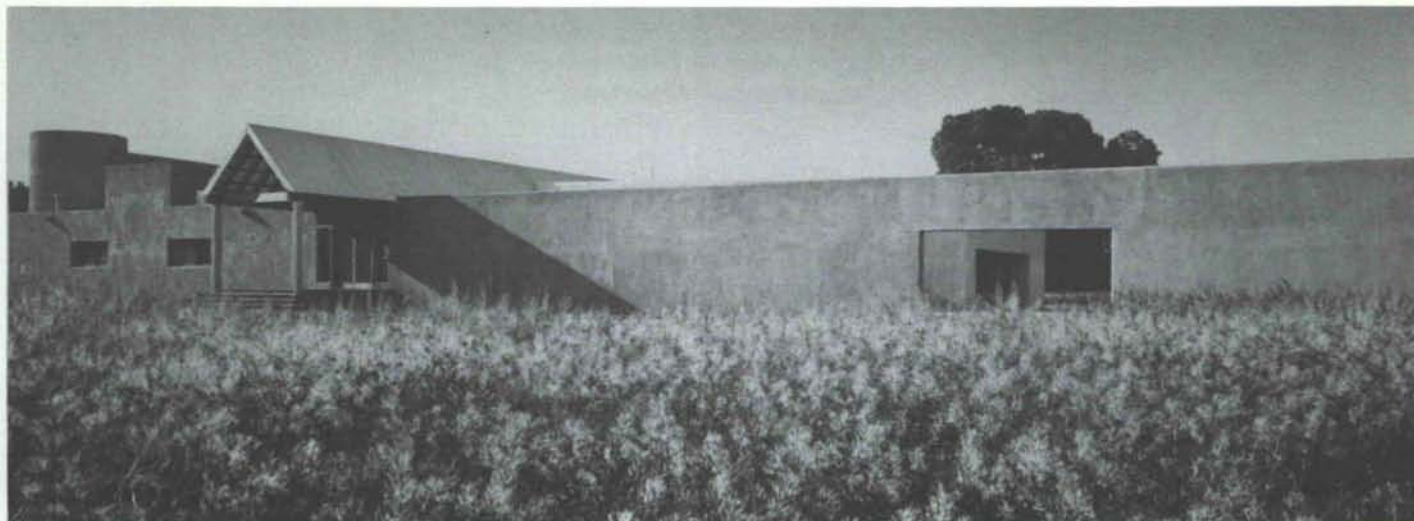
Landscape Architect:
Antoine Predock, FAIA

General Contractor:
Ron Romero

Jury Comments:

The jury commended this project for its explorative use of materials and shapes. They found it interesting.





Honor Award

Boehning, Protz, Cook &
Associates, P.A.

Historic Restoration

La Posada de Albuquerque
Albuquerque, New Mexico

The old Hilton Hotel in downtown Albuquerque opened in 1939, and was the second hotel constructed in Conrad Hilton's chain of major hotels. The building has been modified many times in the past. These modifications include a major addition of second floor meeting rooms over the main lobby in the 1950's.

This project restores the lobby to its original charm. The second floor meeting rooms have been removed and the original two-story lobby with wood railings along the second story corridors were reconstructed. Rails and wood trim details, tin chandeliers, Spanish tile, and smooth plaster walls recreate the handcrafted Southwestern flavor. The original handcrafted wood columns, beams, carved corbels, and herringbone pattern savinos are highlighted in the public spaces.

The main desk and offices off the lobby were modified to improve operations and to facilitate movement throughout the lobby. The wall murals and the panelized wood wainscot in the two entry ways to the lobby have been restored. The old dining room has been completely remodeled into Eulalia's Restaurant and a new kitchen facility has been provided. The second floor ballrooms have been restored to their original splendor. The painted detailing on the wood floors, beams, and deck in the ballrooms have been repainted and provide an attractive highlight. The windows in the ballrooms have been uncovered and restored.

Modern conveniences have been added to all of the original guest rooms. smaller guest rooms have been combined to create larger suites. The exterior has been completely refurbished and the hotel has been brought up to current lifesafety standards. At the street level, there is new street furniture, trees, new signage and brick sidewalks.



La Posada de Albuquerque Albuquerque, New Mexico

Architect:
Boehning, Protz, Cook and Associates, P.A.
Albuquerque, New Mexico

Interiors:
Peter Choate and Associates

Mechanical Engineer:
Coupland/Powell/Moran

Electrical Engineer:
Coupland/Powell/Moran

Structural Engineer:
Chavez-Grievess Consulting Engineers

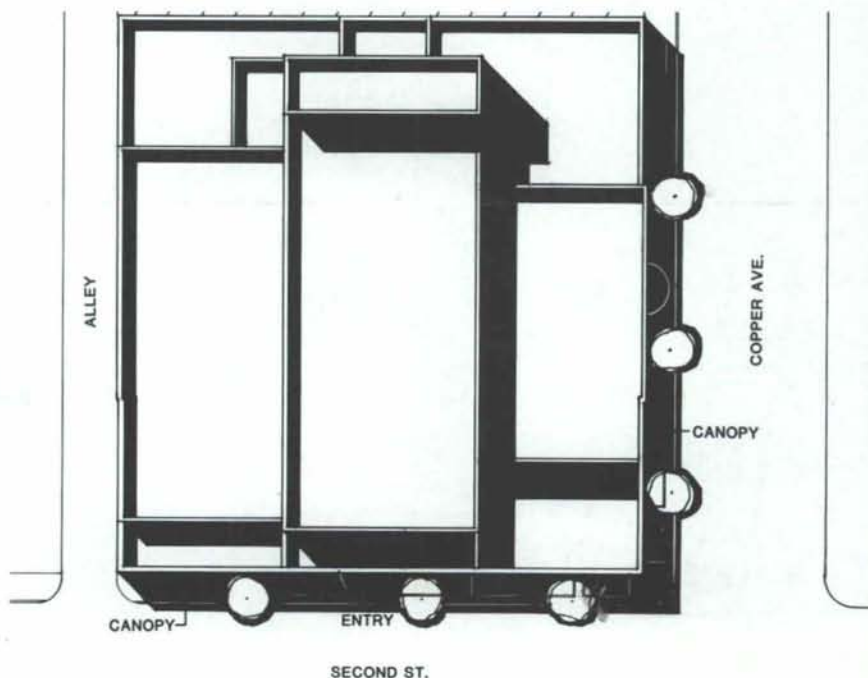
Owner:
Southwestern Resorts, Inc.

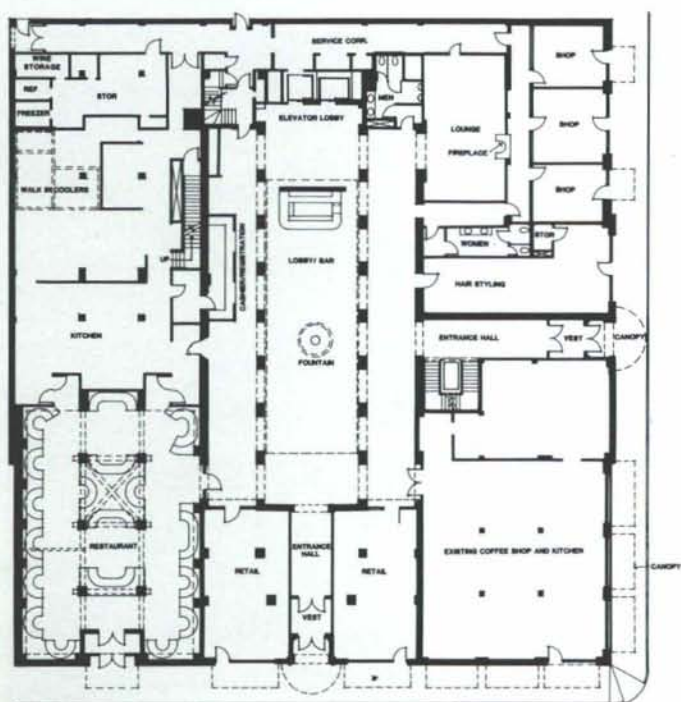
Contractor:
Bradbury and Stamm

Photographer:
Kirk Gittings/Syntax

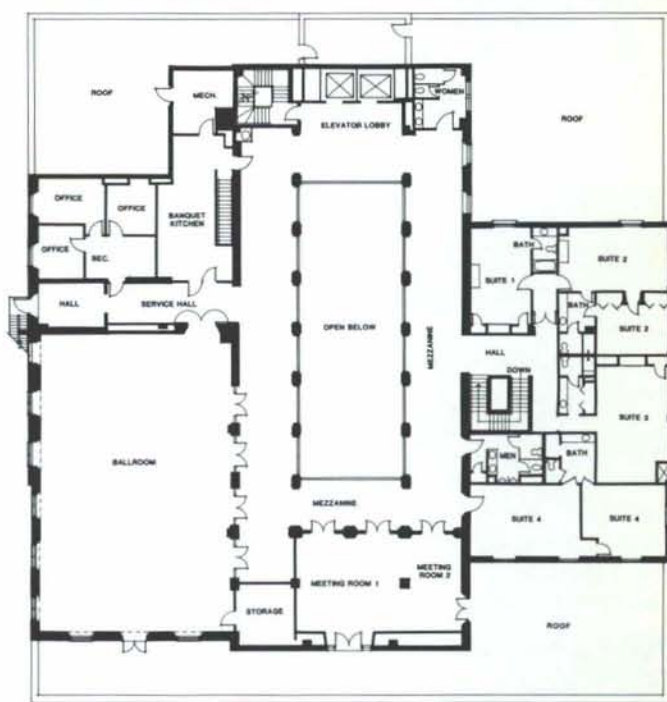
Jury Comments:

The jury felt this project has good regional quality and character. They especially commended the well carried out theme of the interiors.





FIRST FLOOR PLAN



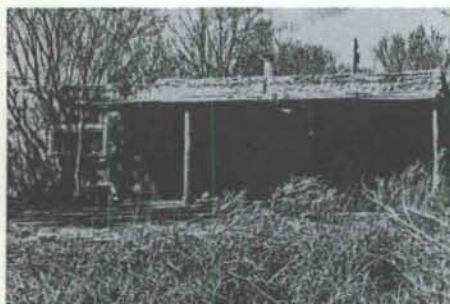
SECOND FLOOR PLAN

Honor Award

Edith Cherry/D. James See
Architects

Residential Buildings

The Robert Lynn Residence
Corrales, New Mexico



Existing Structure



The dominant element of the site is a spectacular view of the Sandia mountains to the East of the site.

The house spreads out to the north and south so that every living space except the Library and Greenhouse takes advantage of the ever changing colors, shades and shadows on the mountains. Maximizing the length of the east facade reduced the opportunity for south facing walls to take advantage of passive solar heat gain and created the need for clerestories. In addition, light from the east is balanced with skylights or other natural lighting sources in order to avoid glare and high contrast.

The existing adobe portion of the house was structurally sound but in need of repair. It reflects the traditional rural New Mexico character that appealed to the owner. The design maintains the desirable qualities of the adobe structure while quadrupling the floor area.

The solution maintains all of the existing adobe walls, fireplaces, brick floors and ceilings. The new walls are also adobe and the ceiling is exposed rough cut cedar.

Both the client and the architect believe resource and energy conservation are part and parcel of good design. In this respect the solution established a south facing greenhouse to heat the library and living room. The greenhouse, along with the curve of the master bedroom, also emphasizes the entry. The greenhouse is shaded from the summer west sun by the adjacent trees. Operable skylights and low windows provide for summer ventilation.

The Master Bedroom is passively heated by a Trombe wall. This wall has vents for use during warm weather and a grape vine for summer shading. The Kitchen, Dining, and Master Bedroom receive a net heat gain in the winter from the east windows. In addition, a south facing clerestory is located over the wall between the Kitchen and Dining room to assist with heating the Dining area. Another south facing clerestory assists with heating the Master Bath.

All of the north facing adobe walls were insulated with urethane foam before the stucco was applied. The exposed wood ceiling pattern provides a space in the ceiling which is insulated with fiberglass batts.



The Robert Lynn Residence Corrales, New Mexico

Architect:
Edith Cherry/D. James See

Structural Engineers:
Engineering Associates

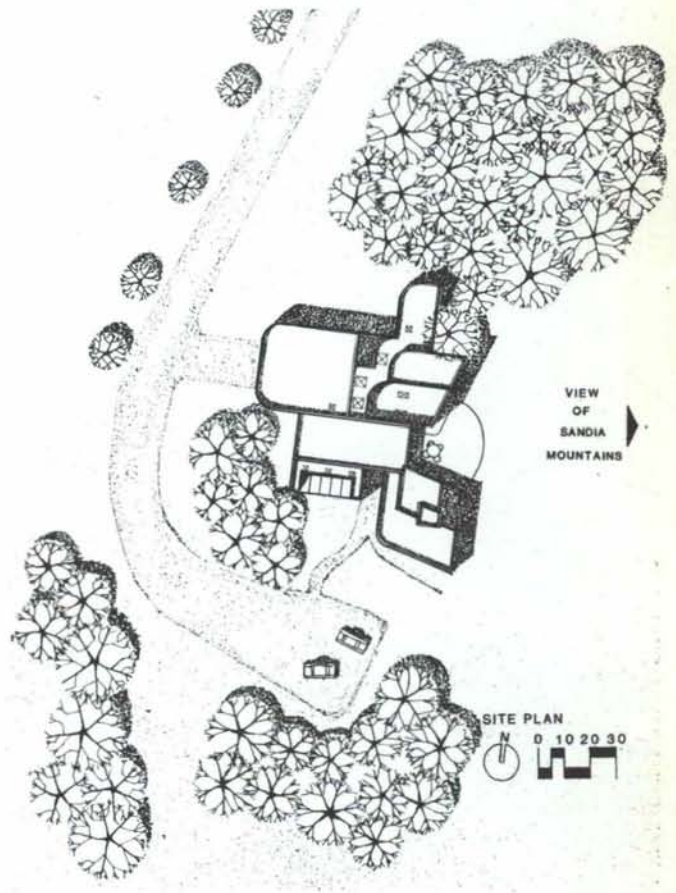
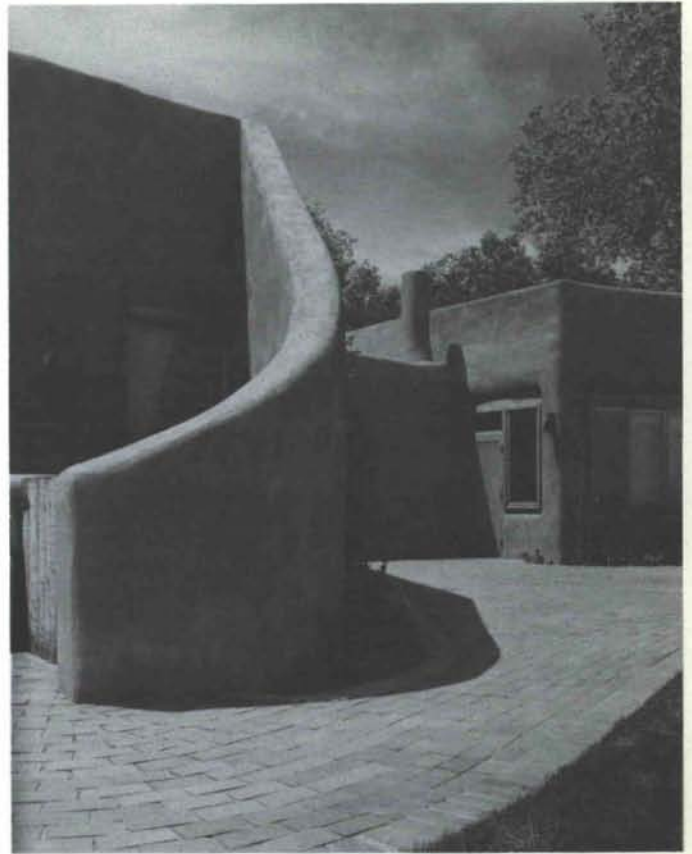
Mechanical Engineers:
Melichar and Associates

Contractor:
Ron Romero, Construction

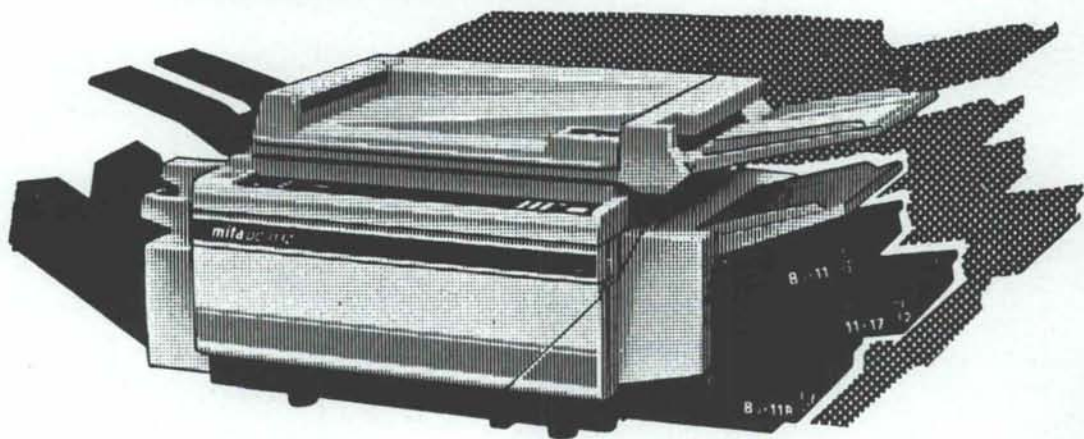
Photographer:
Kirk Gittings/Syntax

Jury Comments:

This home expresses consistently good design along traditional lines.



INTRODUCING THE *mita* DC-313Z



with **ZOOM**

REDUCTION and **ENLARGEMENT**

... because all originals don't come in perfect sizes!

Don't be limited to preset copy sizes! With the DC-313Z plain paper copier, 766 different steps of magnification are possible!

And, the DC-313Z offers:

- Copies as big as 11 x 17
- Convenient 4 way paper feeding system
- Automatic magnification selection
- 30 copies per minute
- Snap in toner cartridge for easy loading
- Easy to read display
- 7-step density selection
- Letter perfect dry copies
- Optional automatic document feeder and sorter



The Perfect Copier for Architects and Engineers
Call for a Demonstration

INNOVATIVE CONCEPTS, INC.

6329 Lomas, NE

Albuquerque, New Mexico 87110

(505) 255-1692

*The
Mystery
Of*

THE SQUEAKY FLOOR

SQUEAK!

THE BUILDER FINISHED
TEN YEARS AGO. TODAY HE'S
BEING HEARD FROM AGAIN.

TROUBLE IS LURKING BENEATH AMERICA'S FLOORS. TRUS JOIST CORPORATION HAS THE SOLUTION.

1

It was their dreamhouse. Or so it seemed.

On the surface nothing had been overlooked: The tile entryway was spectacular. The oak parquet, stunning.

But the unknowing homeowners soon discovered there's more to a floor than meets the eye.

First, there were footsteps. Then without warning, a shrill, unspeakable noise from below.

"Squeeeeeeak!"

A squeaky floor had struck yet another happy home.

A CLUE



AUTHOR'S NOTE

Here's a telltale sign of squeaks to come—the floor has separated from an uneven joist. When stepped on, the floorboard will squeak as it rubs against the pulled nail.

THE EVIDENCE

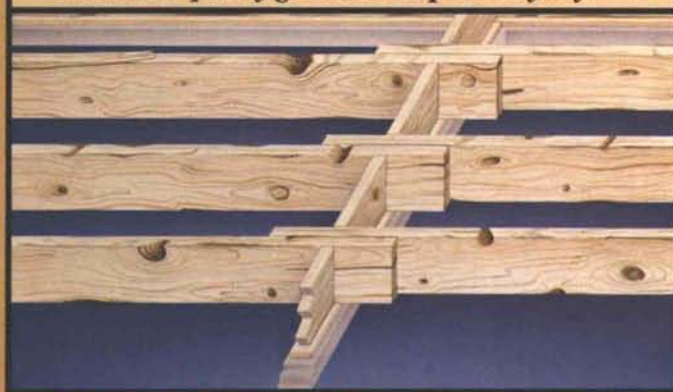


**ARE YOU
DEALING WITH
A QUALITY
BUILDER OR
AN IMPOSTOR?**

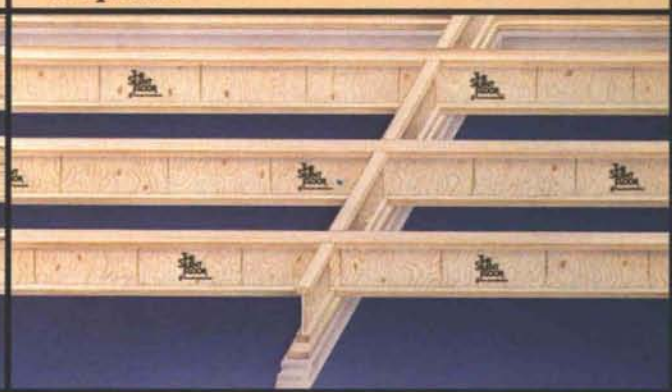
*Hint: If he uses
Trus Joist products,
rest easy!*



THE CULPRIT REVEALED Ordinary lumber floor joists. Some start knotty and unevenly cut. Others can split or warp. Most will shrink with age. And lumber quality gets more suspect every day.



THE SILENT SOLUTION The Silent Floor™ from Trus Joist is engineered to resist warping, shrinking and other problems common to ordinary lumber. Result: no squeaks.



What was the cause of this unseen menace? A fact-finding trip to the cellar would yield some surprising answers.

The curious couple's flashlight probed the darkness. Suddenly, the culprit came into plain view.

"Ohmygosh!" gasped the husband.

The floor joists were made from *ordinary lumber!*

"Look at these split, warped and unevenly cut joists," he said.

No wonder the floor above it had more dips than an ice cream parlor.

(Dimensional lumber can shrink, bow and twist with age. Some lumber is uneven when it leaves the mill!)

"What does it mean?" quizzed the perplexed wife.

"Simple. Step on a floor that sits on irregular joists, and you know what happens?"

"Don't say it!" she begged.

"Squeeeeeeak!"

The mystery had been unraveled.

EPILOGUE: Don't build a home without The Silent Floor™ from Trus Joist.

Never heard of Trus Joist?

Not surprising. Because we've been quietly working undercover for years in better homes across America.

Trus Joist floor systems are specifically engineered to assure strong, silent floors for the life of your home.

They resist warping, shrinking and other problems common to ordinary lumber joists.

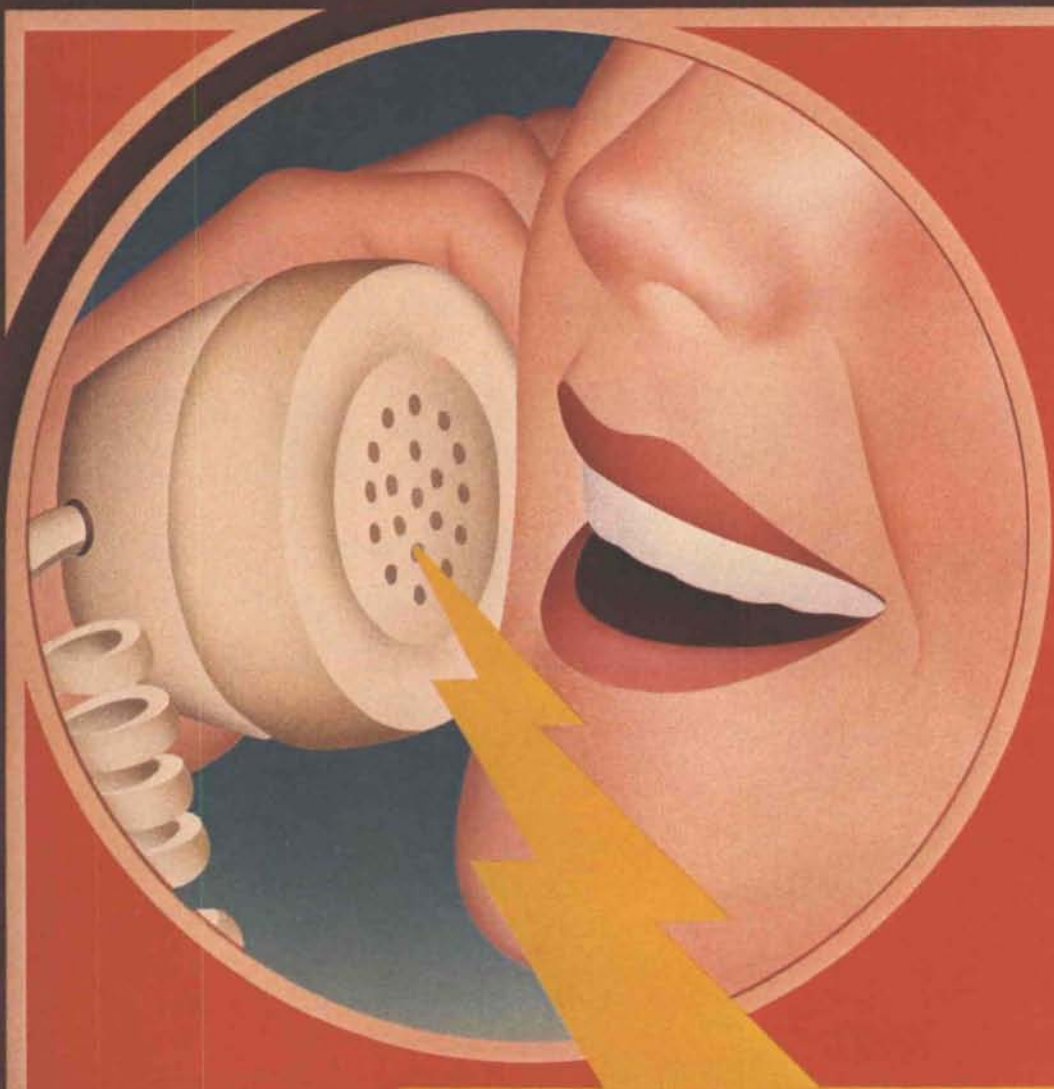
They're much more consistent in size, too.

Quite simply, a Trus Joist floor starts flat and stays flat.

So whether you're building or buying a new home, or just adding-on to an existing one, look for The Silent Floor symbol.

When your builder uses Trus Joist products, it's convincing evidence you're getting a quality, well-built home.





©1986 Trus Joist Corporation

*If you want the best-built home for your money,
The Silent Floor is worth investigating. Call for the name
of your nearest Trus Joist dealer. He knows the quality
builders in your area who use Trus Joist products.*

1-800-822-5585 (toll free)

Call weekdays, 6 a.m.-10 p.m., Pacific Time. In Oregon call 1-800-822-8522.



TRUS JOIST CORPORATION

P.O. Box 60, Boise, Idaho 83707

(208) 375-4450

WESTERN MOUNTAIN REGION AWARDS

Award of Honor
Don Felts, AIA
Architect

The Sawyer House
Albuquerque, New Mexico

Refer to Awards Issue-part one, May/June 1986 for written description.



The Sawyer House Albuquerque, New Mexico

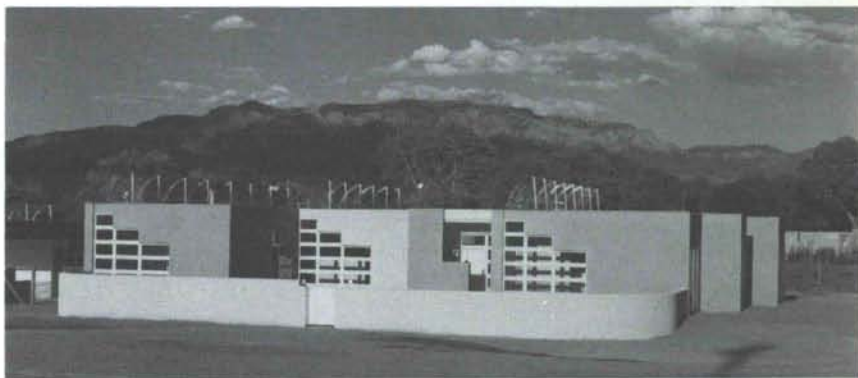
Client:
Robert and Catherine Cassidy Sawyer

Architect:
Don Felts, AIA
Nancy Weinman, Associate

Structural Engineer:
Design Professionals, Inc.

Photographs:
© Robert Reck

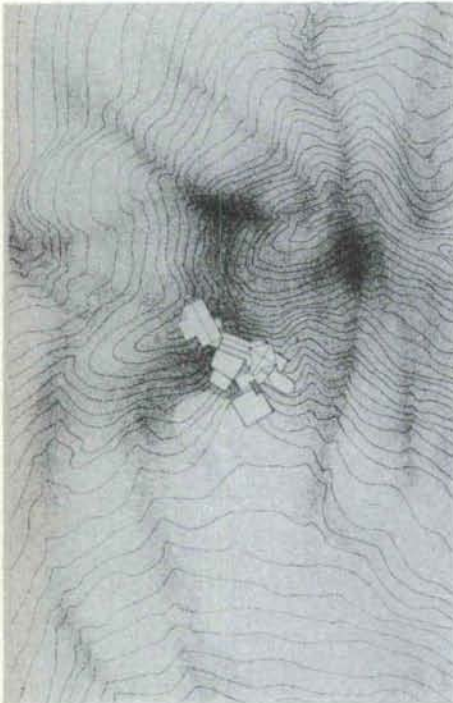
General Contractor:
Ron Romero



WESTERN MOUNTAIN REGION AWARDS

Award of Honor
Antoine Predock, FAIA
Architect

Treaster Gray House
Tesuque, New Mexico



The Treaster / Gray house unfolds as a fragmented village of rooms as it climbs the flank of a ridge.

The ceremonial approach to the house from a distance-circuitous dirt road amidst aromatic piñon / juniper trees; distant views of the vernacular metal roofed bedroom tower rising above huddled pieces of the house-each piece a different frozen sunset color-sets the stage for this "house as a theatre" for the musician owners.

The processional, sequential, places then experienced on ascending the site, through the house, culminate in the living room (performance space) breaking like a wave over the ridge, high above the Tesuque Valley.

The simple, archetypal pieces of the house resemble the accredited villages of Northern New Mexico. Colliding shifting axes of the six fragments result from relationships to topography, views and the ceremonial path up the hillside.

Imagining an evening gathering, the visitor arrives in a parking placita then climbs a series of steps on axis with the stair tower, enters into a space with views channeled toward the Jemez mountains and the lights of Los Alamos, passes along a gallery / greenhouse, ascends through a stage-like proscenium opening, then emerges as an "actor" on the living room stairs at the same time witnessing a musical performance below joined by the audience on the balcony / loft above. The theatre-diagram aspect of the house simultaneously addresses pragmatic issues of the owner's day to day lives. But the romance of the site overlayed by the artistic persuasion of the Treaster / Gray's produces an experiential sequence going hand in hand with, and at the same time transcendent of program.

Varying shades of stucco on frame construction. Galvanized metal roofing. Passive solar greenhouse distributes warm air to other zones.

Construction during 1984-85.



Treaster Gray House Tesuque, New Mexico

Client:
Byron L. Treaster
Jane Gray

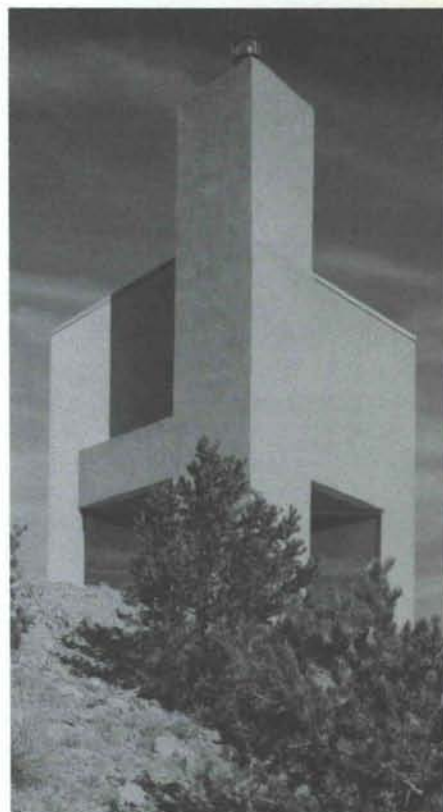
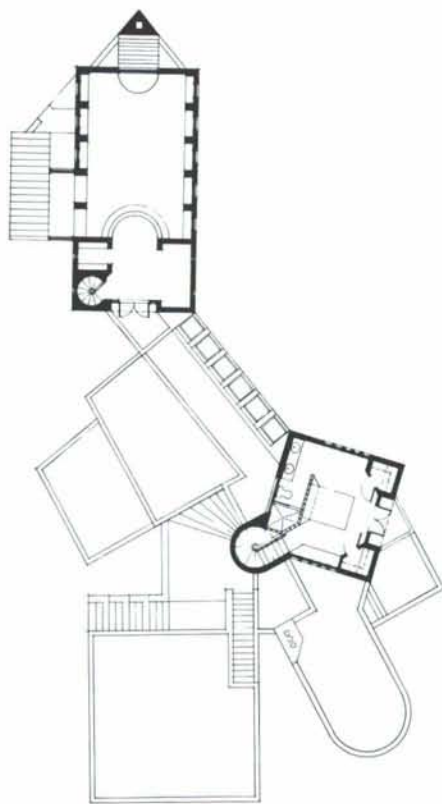
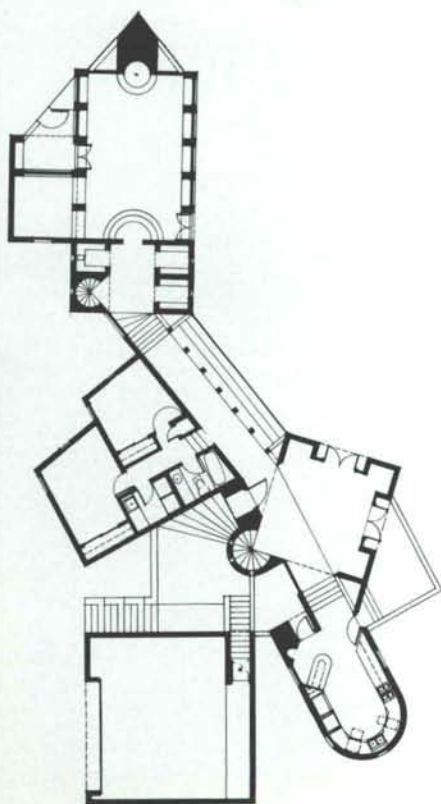
Architect:
Antoine Predock, FAIA
Albuquerque, New Mexico

Project Architect:
Jon Anderson

Mechanical Engineer:
Don Felts

Photographs:
© Robert Reck

General Contractor:
Blue Raven Construction Works, Inc.



PERSPECTIVES OF INNOVATION

What form innovation
takes depends entirely
on the point of view.

At Summit,
we continue to
solve old problems in
new and creative ways.

It's a never-ending
challenge... shaping
everything we build.



SUMMITCONSTRUCTION

Albuquerque, New Mexico
505/842-8113

COPPER SQUARE



ARCHITECTURAL
WOODWORK
INSTITUTE

NEW MEXICO CHAPTER ARCHITECTURAL WOODWORK INSTITUTE

P.O. Box 36041
Albuquerque, NM 87176-6041

ACTIVE MEMBERS

LIVINGWARE CABINETS, INC.
9700 Trumbull S.E.
Albuquerque, NM 87123
(505) 294-5664

CHATEAU MILL
3417 Girard N.E.
Albuquerque, NM 87107
(505) 884-2066

ARCHITECTURAL WOODWORKING
P.O. Box 9043
Albuquerque, NM 87119
(505) 242-8774

DODD CABINET COMPANY
P.O. Box 21339
Albuquerque, NM 87154
(505) 293-7679

SOUTHWEST CUSTOM CABINETS, INC.
514 Carmony Rd., N.E.
Albuquerque, NM 87107
(505) 242-1173

CREATIVE CARPENTRY
P.O. Box 40008
Albuquerque, NM 87196
(505) 243-4605

BRADBURY & STAMM CONSTRUCTION CO., INC.
P.O. Box 25027
Albuquerque, NM 87125
(505) 765-1200

CABINETS BY LUCERO, INC.
115 North Prince
Clovis, NM 88101
(505) 763-6953

ROMBIN CONSTRUCTION COMPANY
6213 Cole Lane S.W.
Albuquerque, NM 87105
(505) 867-4440

FENESTRA
206 Atrisco Drive S.W.
Albuquerque, NM 87120
(505) 831-0499

ASSOCIATE MEMBERS

NEW MEXICO SUPPLY CO.
4606 McLeod N.E.
Albuquerque, NM 87109
(505) 881-9588

KITTS ENTERPRISES, INC.
P.O. Box 25465
Albuquerque, NM 87125
(505) 345-8135

FRANK PAXTON LUMBER CO.
P.O. Box 25125
Albuquerque, NM 87125
(505) 243-7891

WILLIAMS MACHINERY
3100 Pan American Fwy. N.E.
Albuquerque, NM 87109
(505) 292-9000

FRANCIS WAGNER CO.
3425 Girard, N.E.
Albuquerque, NM 87107
(505) 884-2431

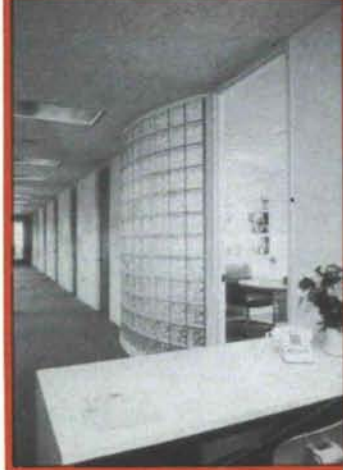
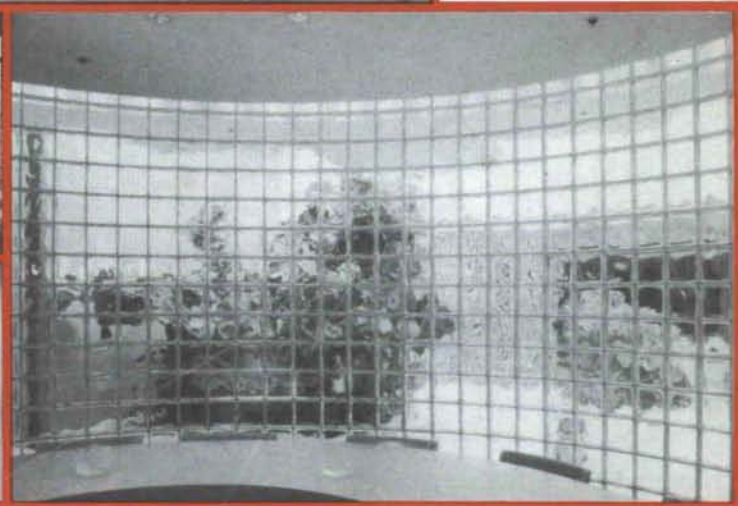
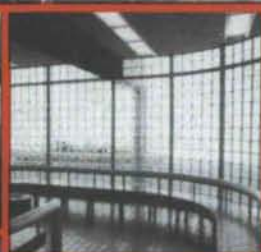
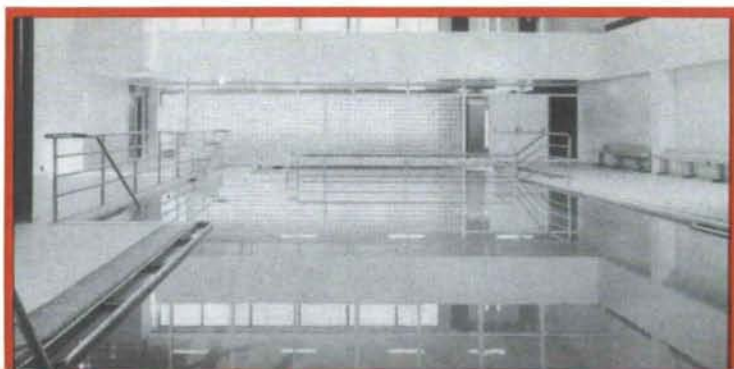
SUNWEST SURFACES, INC.
2512 Madison, N.E.
Albuquerque, NM 87110
(505) 884-5555

How do you know that our concept of quality matches yours? We wrote the book on it - **The Quality Standards Manual**.

Our members are pleased to provide assistance by answering questions concerning construction methods, procedures and interpreting specifications.

PITTSBURGH CORNING
PCGLASSBLOCK®
PRODUCTS

Glass Block for the 80's ...design with confidence



DISTRIBUTORS FOR THE STATE OF NEW MEXICO
WAREHOUSED IN ALBUQUERQUE



CREGO BLOCK CO.

P.O. BOX 6466
ALBUQUERQUE, N.M. 87197

6026 SECOND STREET, N.W.
(505) 345-4451



TO AVOID COSTLY
POST-CONSTRUCTION
INSTALLATION AND
HEADACHES...



VIDEO SCAN

■ 15 years in
security
surveillance

■ Oldest
continuous
business of its
kind in NM

CALL VIDEO-SCAN
BEFORE YOUR PROJECT
LEAVES THE DRAWING
BOARD!



**ENGINEERS/
ARCHITECTS —
CALL TODAY
FOR FREE
CONSULTATION:**
292-2264
1621 Eubank Blvd NE
ABQ., NM 87112

INTERIOR LANDSCAPING DESIGN
LEASING • MAINTENANCE



plant designs

The Professional Plant People
(505) 888-5821



BUILDERS BLOCK

Members:
New Mexico Concrete
Masonry Association
National Concrete
Masonry Association

**Quality Concrete Masonry Products
and many allied building materials.
Serving New Mexico and West Texas
for over a quarter of a century.**

P.O. Box 1633
Roswell, NM 88201
505/622-1321

P.O. Drawer FF
Las Cruces, NM 88001
505/524-3633

Telephone
El Paso
915/532-9695

AGP

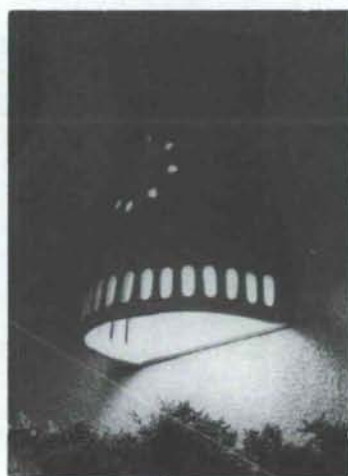
*Home of the
Concrete Giant!*



ALBUQUERQUE GRAVEL PRODUCTS COMPANY

**DEDICATED TO QUALITY
AND SERVICE**

600 John Street S.E. Tel. (505) 242-5265
P.O. Box 829 Albuquerque, NM 87103



SANTA FE LIGHTS

ARCHITECTURAL
LIGHTING FIXTURES
IN SOUTHWEST
ADOBE STYLE
INDOOR & OUTDOOR
WALL, CEILING AND
HANGING LIGHTS,
CHANDELIERS &
GARDEN LIGHTS

FRANK WILLETT / THE SANTA FE POTTERY
323 Guadalupe Street, Santa Fe, New Mexico 87501
(505) 471-0076 / (505) 983-9011

Beauty & Performance...

The Perfect Pair!

Weather Shield offers you both in the line of quality wood windows and steel insulated entry systems.



All Weather Protection - Always!



Western Building Supply Co., Inc.

4201 Los Angeles, NE

Albuquerque, New Mexico 87113

(505) 823-2500



Mercedes-Benz



- Authorized sales and 24 hour service
- Large inventory
- '86 Mercedes-Benz leases

Available from
\$399.99
Per month

**ROSWELL
IMPORTED CARS,
INC.**

204 East College
Roswell, NM 88201
(505) 622-6275



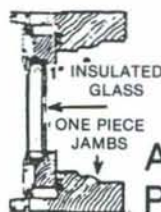
DELABRO MILLWORK

UNMATCHED

Come into a GLASS-RITE showroom and we'll set a DELABRO window side by side any, **any** window and compare feature to feature.

When we're done you'll know why DELABRO windows are the best windows money can buy. If you're already aware of DELABRO'S superior quality, but think they cost more than other top of the line windows, then you haven't been quoted prices since GLASS-RITE became the DELABRO distributor for New Mexico.

**DELABRO UNMATCHED IN QUALITY
MADE AFFORDABLE BY GLASS-RITE**



Available in
Pine or Oak

Available with Heat Mirror
Transparent Insulation.

**HEAT
MIRROR**

HEAT MIRROR™ is a trade mark
of the Southwall Corporation

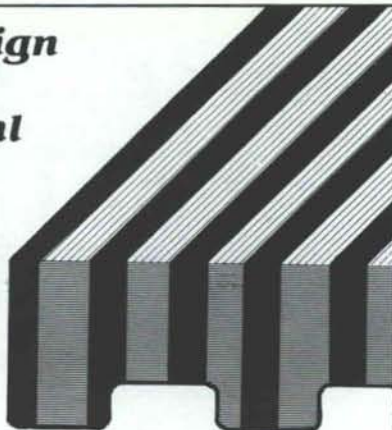
GLASS-RITE™
ENERGY SAVING SYSTEMS

In Albuquerque
8307 CENTRAL AVE.
268-1001

In Santa Fe
3662 CERRILLOS RD.
471-1760

**Custom design
for today's
architectural
needs.**

**Growing With
Albuquerque
Since 1947**



- **Canvas Awnings**

Commercial & residential. Custom designed & fabricated

- **Upholstering**

Commercial, office, patio, auto, trucks, RV's

- **Tent Rentals / Sales / Repairs**

Party canopies, big tops, camping

RADER
AWNING & UPHOLSTERING, INC.
915 4th Street NW
Albuquerque, New Mexico 87102
505-243-4523

**AN UNCOMPROMISING CHOICE...
between a fireplace and a
woodstove**

ELEGANCE

Southwestern to Contemporary, BIS integrates easily into your interior decor.

EFFICIENCY

Tested to 67% net efficiency, BIS heats like an airtight woodstove, far surpassing the 0-20% of traditional masonry and factory built fireplaces.

CLEAN BURNING

BIS is the only zero clearance Built In Stove to pass the stringent 1988 Oregon emissions standards!

For details and our 16 page color BIS Designer Brochure, visit us...



THE FIREBIRD

2626 SAN PEDRO, N.E., ALBUQUERQUE, N.M. 87106
1814 SECOND ST. SANTA FE, N.M. 87505

884-1361
983-5264



KITTS ENTERPRISES INC.

5815 EDITH BOULEVARD, NE
ALBUQUERQUE, N.M. 87125

Alder, Ash, Basswood, Birch, Aromatic Cedar, Spanish Cedar, Cherry, Honduras Mahogany, Phillipine Mahogany, Maple, Red Oak, White Oak, Ponderosa Pine, Sugar Pine, Poplar, Sassafras, Walnut, and Willow.

Stairway Components, Adhesives, and Abrasives.

Custom Milling and Hardware.

In Fact — Over 800 Items in Stock for High Quality, Architectural, Cabinet, Furniture, and Finish Work!

(505) 345-8135

New Mexico Toll Free:
1-800-432-6820

Outside New Mexico Toll Free:
1-800-545-6104

© 1983, all rights reserved, and Reg. U.S. Pat. Off., Canada & other countries by THE BURNS & RUSSELL CO.

BUILD INTERIOR &



EXTERIOR WALLS
with initial savings that grow with age!



**PRE-FACED
CONCRETE
MASONRY UNITS**

The only glazed block with more than 3 decades of proven performance. Permanent, sanitary glazed finish. Practically no maintenance. Energy & insurance savings too. Meets Gov't specs. Wide range of color, texture, form, scale & pattern. © 4.4 Bu in SWEET'S.

NO REFURBISHING!
**ASK FOR COST COMPARISONS
AND CASE HISTORIES...**

FEATHERLITE BUILDING PRODUCTS CORP.,
Box 489, Lubbock, TX 79408

FEATHERLITE BUILDING PRODUCTS, Box 9977, El Paso, TX 79990

CREGO BLOCK CO., INC., 6026 2nd St. NW, Albuquerque, NM 87107

BUILDERS BLOCK, Box 1633, Roswell, NM 88201

BUILDERS BLOCK, Drawer FF, Las Cruces, NM 88001

806 / 763-8202

915 / 859-9171

505 / 345-4451

505 / 622-1321

505 / 525-3633

Typ

the elegant wedding of word and image

Art

925 Sixth Street NW, Suite 1 / Albuquerque / 505 242 9207

Professional Directory



Sergent, Hauskins & Beckwith
CONSULTING GEOTECHNICAL ENGINEERS

(505) 884-0950

4700 Lincoln Road, NE-Albuquerque, New Mexico 87109

PHOENIX • ALBUQUERQUE • SANTA FE • SALT LAKE CITY • EL PASO • TUCSON

Randy Holt & Associates, Inc.
CONSULTING ENGINEERS

(505) 265-5823

RANDY HOLT, P.E.
PRESIDENT

7920 MOUNTAIN ROAD, N.E.
ALBUQUERQUE, NEW MEXICO 87110

DURHAM • HARRIS • KILMER • NOLAN



605 W. COUNTRY CLUB ROAD

ROSWELL, NEW MEXICO 88201

(505) 623-5588



RICARDO A. BACA, P.E., C.P.E.
Cost Consulting Engineer

1116 Wyoming Ave.
El Paso, Texas 79902
915/533-1176

In New Mexico
Call
505/883-9686



CHAVEZ GRIEVES / CONSULTING ENGINEERS, INC.

VICTOR J. CHAVEZ
DAVID H. GRIEVES

4600 Montgomery NE
Building C, Suite 101
Albuquerque, NM 87109
(505) 881-7376

*Listing space in this Professional Directory
available through*



Carleen Lazzell,
Advertising Editor

NEW MEXICO ARCHITECTURE
8515 Rio Grande Boulevard NW
Albuquerque, NM 87114
505-898-1391

This Space Available

(505) 898-1391



LONG and WATERS

ARCHITECTS • ENGINEERS • PLANNERS

210 La Veta NE

Phone (505) 255-5528

Albuquerque, New Mexico 87108



JOE BOEHNING, AIA DAVID COOK, AIA PAT McMURRAY, AIA BOB TURNER, AIA

501 GOLD AVENUE SW • SUITE 204 • ALBUQUERQUE, NM 87102 • (505) 242-4044

PUGH & ASSOCIATES, AIA
ARCHITECTURE AND PLANNING
301 GOLD SOUTHWEST, SUITE 202
ALBUQUERQUE, NEW MEXICO 87102

(505) 242-7572



Schlegel inc.
associates **Lewis**
architects • planners (505) 247-1529
1620 Central Ave. SE Albuquerque, New Mexico 87106



j. david dekker

architect

marc schiff

architect

robert gerard heiser

project manager

design collaborative sw

architecture planning energy consulting

105 fourth street sw, albuquerque, nm 87102

505-843-9639



(505) 327-3590
(303) 926-3810

204 N. AUBURN, FARMINGTON, N.M. 87401
BOX 494 EDWARDS, COLO. 81632



Consulting Services & Associates

PUBLIC RELATIONS • LEGISLATIVE • GOVERNMENTAL AFFAIRS

621 OLD SANTA FE TRAIL, SUITE 7
SANTA FE, NEW MEXICO 87501

DICKI RYALS

(505) 983-2000 OFFICE

**DAVIS &
ASSOCIATES
INC.**

GENERAL
CONTRACTORS

P.O. Box 2184
Santa Fe
New Mexico
87501

(505)
988-2894

WM. STANLEY DAVIS, P.E.
President



CONSTRUCTION
REAL ESTATE
DEVELOPMENT

PRADO VERDE, INC.

(505) 988-2845

410 OLD TAOS HWY • SANTA FE, NEW MEXICO 87501

**Greene &
Greene**

MORTGAGE
COMPANY,
INCORPORATED

LAURA A. LAGGE, PRESIDENT

SUITE 214 • FIRST INTERSTATE BANK PLAZA
125 LINCOLN AVENUE • SANTA FE, NEW MEXICO 87501
PHONE (505) 983-5572



BERNABÉ ROMERO



**bernabé
ROMERO
a.i.a
architect**

POST OFFICE BOX 5072
SANTA FE, NEW MEXICO
87502

200 WEST DE VARGAS
TELEPHONE (505) 982-2123

Lawyers Title of Santa Fe, Inc.

422 W. San Francisco
Santa Fe, N.M. 87501
(505) 988-2233

James W. Catron
Chairman of the Board

Phillip A. Griego
President

Locally Owned — Nationally Underwritten

A. EUGENE SANCHEZ
ARCHITECT AIA

621 OLD SANTA FE TRAIL
SUITE 4
SANTA FE, NEW MEXICO 87501

(505) 982-2700



Phone: (505) 471-8332

LOPEZ ROOFING SERVICE

ARTHUR LOPEZ
Owner & Manager

P.O. Box 1944
Santa Fe, New Mexico 87501

Robert M. Strumor

Attorney at Law

Suite 300 First Interstate Plaza 150 Washington Avenue
Santa Fe, New Mexico 87501 (505) 988-9721

ROBERT D. KRAUSE
Consulting Engineer

Santa Fe, New Mexico

Telephone 983-3107



Richard Yates
Architects, Inc.

428 Sandoval
Santa Fe
New Mexico 87501
505/988-1913

**New Mexico
Society of Architects
Annual Conference
to be in
Santa Fe, New Mexico
October 9, 10, 11, 1986**

CURE YOUR WINDOW PAINS.



SOUTH SUN PRODUCTS
is the stocking distributor of
ANDERSEN WINDOWS
to contractors.

**Come home to quality.
Come home to Andersen.**



South Sun Products 1313 12th Street NW
Albuquerque, NM 87104
843-7899

South Sun Products will continue to furnish Naturalite Skylights and Janco Greenhouses to builders throughout New Mexico.

Published bi-monthly by New Mexico Society of Architects, American Institute of Architects, a non-profit organization. Editorial Correspondence should be addressed to John P. Conron, Box 935, Santa Fe, N.M. 87504. (505) 983-6948.

Editorial Policy: Opinions expressed in all signed articles are those of the author and do not necessarily represent the official position of the publishing organization.

Additional copies of NMA available from John P. Conron FAIA/FASID, P.O. Box 935, Santa Fe, N.M. 87504.

Change of address: Notifications should be sent to New Mexico Architecture, Box 935, Santa Fe, N.M. 87504 (505) 983-6948 at least 45 days prior to effective date. Please send both old and new addresses.

Subscriptions: Write Circulation, New Mexico Architecture, Box 935, Santa Fe, N.M. 87504. Single Copy \$3.00. Yearly subscription \$15.00.

Advertising: Send requests for rates and information to Carleen Lazzell, Advertising Editor, 8515 Rio Grande Boulevard, N.W., Albuquerque, N.M. 87114, 505/898-1391.

INDEX OF FIRMS who make possible the publication of NMA and the page upon which their message is found:

Albuquerque Door Company	27
Albuquerque Gravel Products Company	20
American Business Interiors	27
APS Estimating Inc.	27
Architectural Woodwork Institute	18
Bishop, Jim, General Contractor, Inc.	4
Blue Raven Construction Works, Inc.	27
Builders Block	20
Crego Block Co.	2
Crego Block Co.	19
Don J. Cummings Kitchen Equipment	5
Featherlite Building Products Corp.	22
Firebird, The	22
Glass-Rite	21
Hydro Conduit Corp.	28
Innovative Concepts, Inc.	14
Kitts Enterprises, Inc.	22
Kohler	Insert
Lumins Lighting Specialties	5
Mason Contractors Association of New Mexico	6
Mesa Blueprint, Inc.	5
New Mexico Travertine	4
Plant Designs	20
Rader Awning & Upholstering, Inc.	22
Roswell Imported Cars, Inc.	21
Santa Fe Lights	20
South Sun Products	26
Summit Construction	18
Trus Joist Corporation	Center Insert
TypArt	23
Video Scan	20
Western Building Supply Co., Inc.	21

Printed by Hall-Poorbaugh Press, Inc., Roswell, New Mexico

Albuquerque Door Company

New Mexico's Largest Pre-Hung Door Supplier

CELEBRATING
OUR 20th YEAR OF SERVICE

- * Interior and Exterior Flush Doors
- * Exterior Metal Entry Doors
- * Interior Panel Doors
- * Classic Stile and Rail Entry Doors
- * Windows
- * Fireplaces
- * Skylights
- * Garage Doors
- * Hollow Metal Doors & Hardware
- * Closet Maid Ventilated Shelving
- * Cabinets

FEATURING: Oak Exterior and Interior Flush and Panel Doors with Oak Jambs and Trim.

3600 Pan American Freeway NE (505) 884-1601



BLUE RAVEN

CONSTRUCTION WORKS, INC.

P.O. Box 5468
Santa Fe NM 87502

(505) 471-6053

*Santa Fe's Award-Winning
Custom Home Builder*



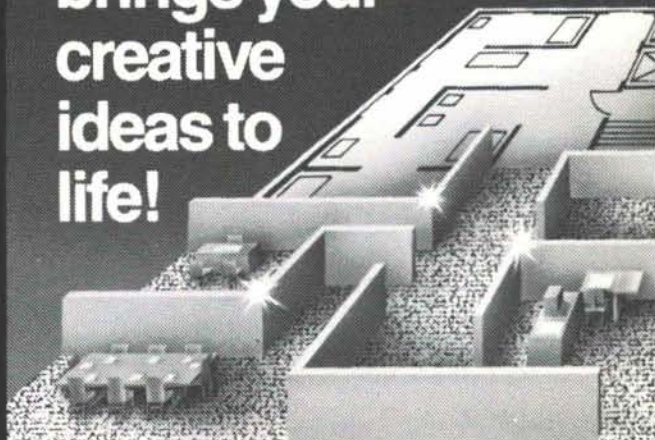
e s t i m a t i n g i n c

1420 Carlisle N.E.
Suite 202A
Albuquerque, N.M. 87110
(505) 262-2681

CONSTRUCTION COST ESTIMATES

EXPERIENCE
TECHNOLOGY
RESULTS

Bigelow...
brings your
creative
ideas to
life!



You've agonized over the concept, sweated out the plans, now it's time for the compliments. And when you specify Bigelow underfoot, you know the rug won't be pulled out from under you. We can supply and install the Bigelow carpet to complement your plans!



american
business
interiors

612 Central Avenue, SW
Albuquerque, New Mexico 87102
(505) 883-2055

in context . . . *Architectural Precast*

Postmaster: Address Correction Requested
New Mexico Architecture
5515 Rio Grande Blvd., N.W.
Albuquerque, NM 87114

Bulk Rate
U.S. Postage
PAID
Roswell, N.M.
Permit No. 47

ZIMMERMAN LIBRARY B25
UNM

ALBUQUERQUE NM 87131

U.N.M Family Practice Center
Dale Crawford & Assoc.



HYDRO CONDUIT CORPORATION

2800 Second Street SW • Albuquerque, NM 87103 • Phone 247-3725