

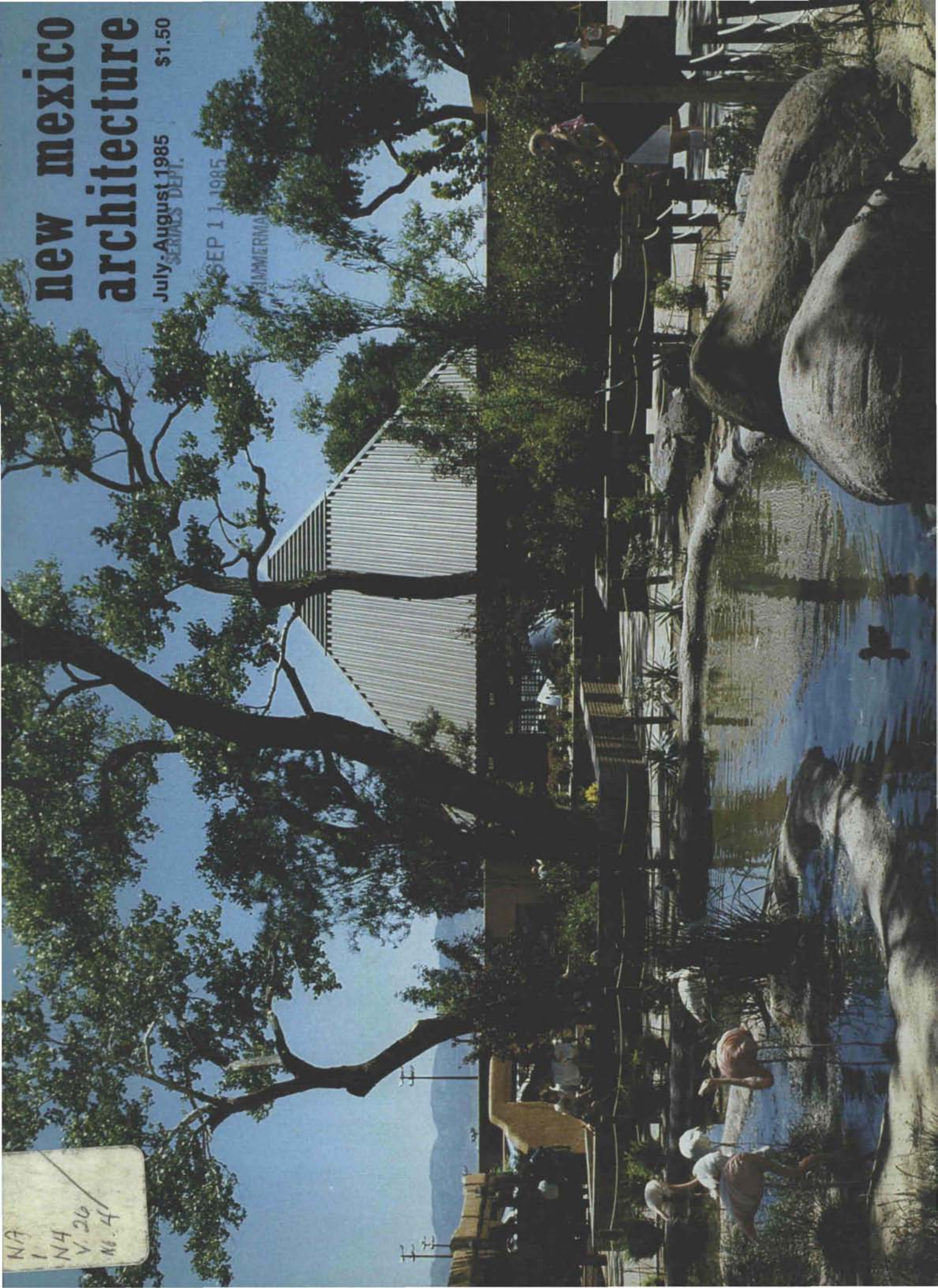
new mexico architecture

July-August 1985 \$1.50

SERIALS DEPT.

SEP 11 1985

UNIVERSITY OF MICHIGAN



NA
1 N4
V. 26
No. 4

Reduce Your Energy Bills 20% to 40% with **CO-GENERATION**

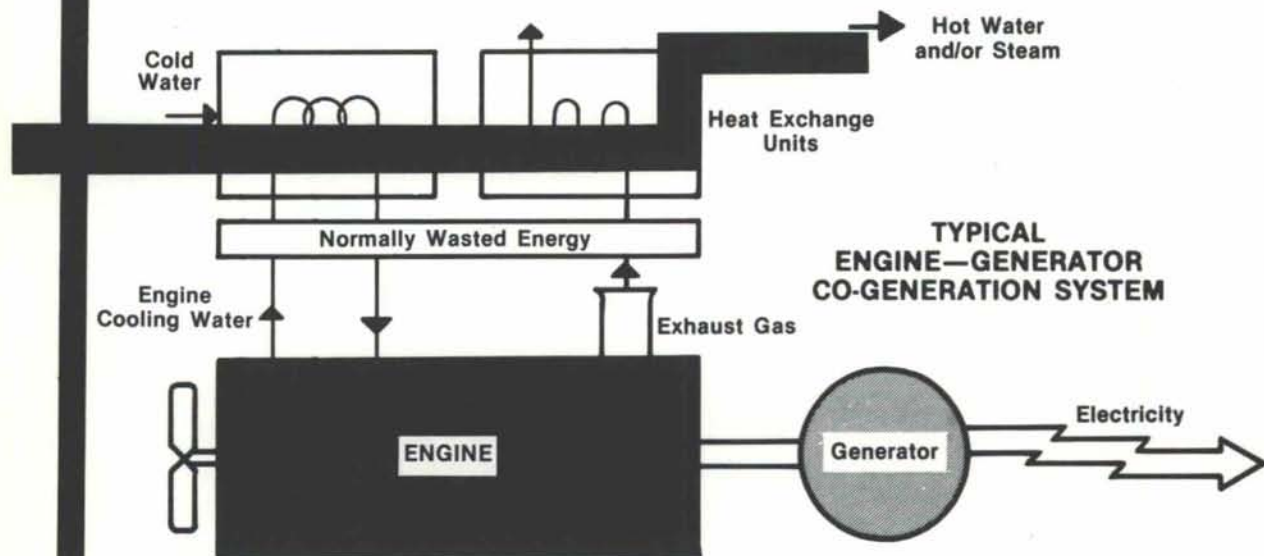
Generate Your Own Electricity.

Use the Waste Heat to Make Steam and Hot Water.

For System Analysis to Determine Your Potential for Savings With Co-generation Contact:

Ernest Bruss
Cogeneration Development Company
2929 Vassar NE
Albuquerque, NM 87107
(505) 881-3511

Engineering & Design • Manufacturing
Project Development • System Management



COGENERATION DEVELOPMENT COMPANY

(A DIVISION OF SANDIA DETROIT DIESEL)

P.O. Box 3648 / Albuquerque, New Mexico 87190 / (505) 881-3511



• vol. 26 no 4 •

july-august 1985 • new mexico architecture

In this issue is the work of two architectural firms, whose recent work has added increased excitement at the Rio Grande Zoological Park in Albuquerque. New Mexico is fortunate to have such a zoo complex in its midst for the enjoyment and education of us all.

□ □ □

The editors and the Magazine Committee want to express their appreciation to those firms who have demonstrated a faith in the magazine through their advertisements. With their continued support, and with increasing support from additional firms, we expect to grow in pages and accordingly in editorial content. We realize that the current issues look slim, however we are afloat, healthy and getting even stronger. We shall see growth at that magic printing press number of four pages a jump. It is contemplated that the first jump in size will be with the September-October issue. Our advertisers are our life blood and we thank them most sincerely.

□ □ □

The color cover for this issue is sponsored by architect Dale Crawford, who designed the Zoo Entrance Pavillion, and three of its building materials suppliers. Kinney Brick Company supplied the brick pavers for the Zoo Entrance, Gift Shop and Snack Bar as well as the brick for the entrance Plaza planters. Crego Block Company furnished the concrete masonry units for the entrance, gift shop and snack bar, and the masonry pavers for use in the entrance. Aluminum Sales Corporation furnished and installed the metal roof for the Entrance Pavillion. We are most grateful to them all.

JPC

nma

 The Editor's Column	3
Entrance Pavillion, Plaza and Shops Dale Crawford & Associates, P.C.	7
Bird of Prey Exhibit Van H. Gilbert, AIA	10
Primate Exhibit Van H. Gilbert, AIA	12
Architectural Project Norton & Associates, Inc.	17
NMA News NMSA Opens State Office	17
Advertiser's Index	18

(Cover—Rio Grande Zoological Park—Dale Crawford)

—Official Publication of the New Mexico Society of Architects, A.I.A.—

Society Officers

President—Don P. Schlegel, FAIA
President-Elect—Randall L. Kilmer
Secretary—Ellen Harland
Treasurer—John Eden
Director—Wayne Lloyd
Director—Peter Allen
Director—Richard Scott
Director—Lawrence Licht
Director—Allen Terrell
Director—Robert Ball
Director—William Freimuth
Director—Collen Boyd-Student Representative

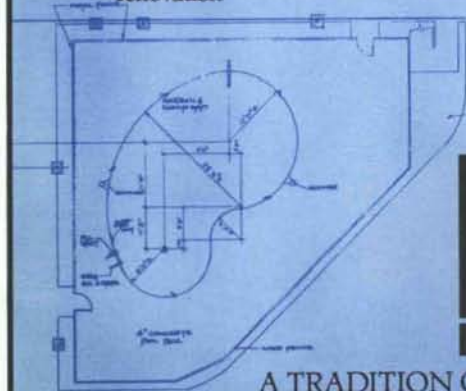
New Mexico Architecture - Committee

John P. Conron, FAIA, —Editor
Carleen Lazzell — Advertising Editor
Van Dorn Hooker, FAIA — Chairman
George Anselevicius, FAIA
Marjorie Hooker, AIA
Christopher Larsen, AIA
Charles E. Nolan, Jr., AIA
George C. Pearl, FAIA
David Abeles Pfeffer, AIA
Glade F. Sperry, Jr., AIA
V.B. Price — Editor "New Mexico Magazine"
Don P. Schlegel, FAIA
Christopher Wilson, Architectural Historian

MOSSMAN A Blueprint For Success

Architects have been depending on Mossman quality for 35 years. It's one reason we're among the most experienced builders in New Mexico. Because we offer professional construction and permanent results. When you build Mossman into your plans — you know you're building the best.

- Custom pool & spa design/construction — residential & commercial
- Custom residential construction/renovation



Mossman

ENTERPRISES

A TRADITION OF QUALITY
2700 San Mateo NE 881-7111

PROFESSIONAL
DESIGN SERVICE

LANDSCAPE
SYSTEMS

COMMERCIAL
FURNISHINGS

ACCESSORIES
CARPETING



american
business
interiors

612 CENTRAL S.W.
PH 883-2055

**Custom design
for today's
architectural
needs.**

**Growing With
Albuquerque
Since 1947**



• Canvas Awnings

Commercial & residential. Custom designed & fabricated

• Upholstering

Commercial, office, patio, auto, trucks, RV's

• Tent Rentals / Sales / Repairs

Party canopies, big tops, camping

RADER

AWNING & UPHOLSTERING, INC.

915 4th Street NW
Albuquerque, New Mexico 87102
505-243-4523

BUILD INTERIOR &



EXTERIOR WALLS

with initial savings that grow with age!

Spectra-Glaze II

The only glazed block with more than 3 decades of proven performance. Permanent, sanitary glazed finish. Practically no maintenance. Energy & insurance savings too. Meets Gov't specs. Wide range of color, texture, form, scale & pattern. © 4.4 Bu in SWEET'S.

PRE-FACED
CONCRETE
MASONRY UNITS

NO REFURBISHING!
ASK FOR COST COMPARISONS
AND CASE HISTORIES . . .

FEATHERLITE BUILDING PRODUCTS CORP.,
Box 489, Lubbock, TX 79408

FEATHERLITE BUILDING PRODUCTS, Box 9977, El Paso, TX 79990

CREGO BLOCK CO., INC., 6026 2nd St. NW, Albuquerque, NM 87107

BUILDERS BLOCK, Box 1633, Roswell, NM 88201

BUILDERS BLOCK, Drawer FF, Las Cruces, NM 88001

806 / 763-8202

915 / 859-9171

505 / 345-4451

505 / 622-1321

505 / 525-3633



**WE TRANSLATE
YOUR KITCHEN
DESIGN CONCEPTS
INTO "CABINETESE"**

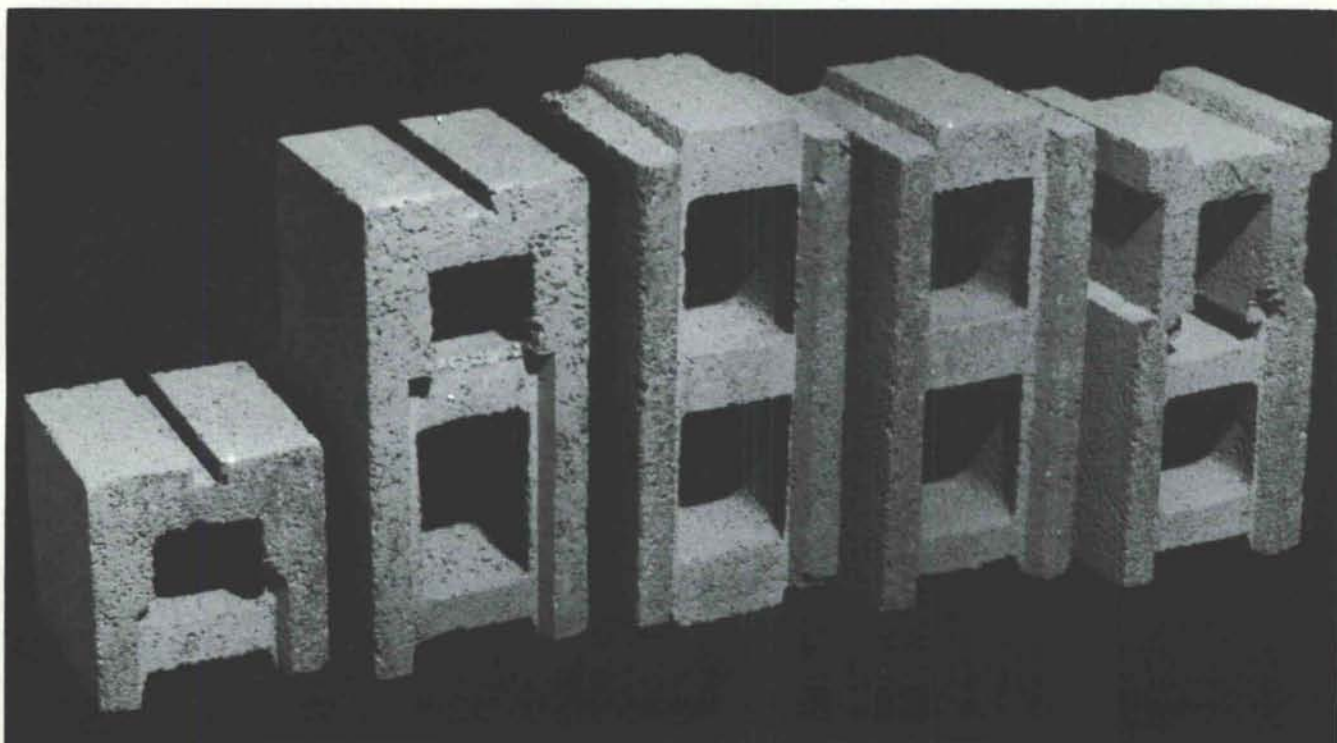
**DISTRIBUTORS FOR
POGGENPOHL
QUAKER MAID
3 ADDITIONAL LINES**

**SANTA FE
SHOWROOM
2913 RUFINA COURT
988-2839**

**ALBUQUERQUE
SHOWROOM
4924 JEFFERSON NE
883-6516**

*Great
House*

(call us collect)



**HALF
JAMB**

JAMB

**DOUBLE
MALE**

STRETCHER

CORNER

8" SCORIA

4 — LOK[®] BLOK

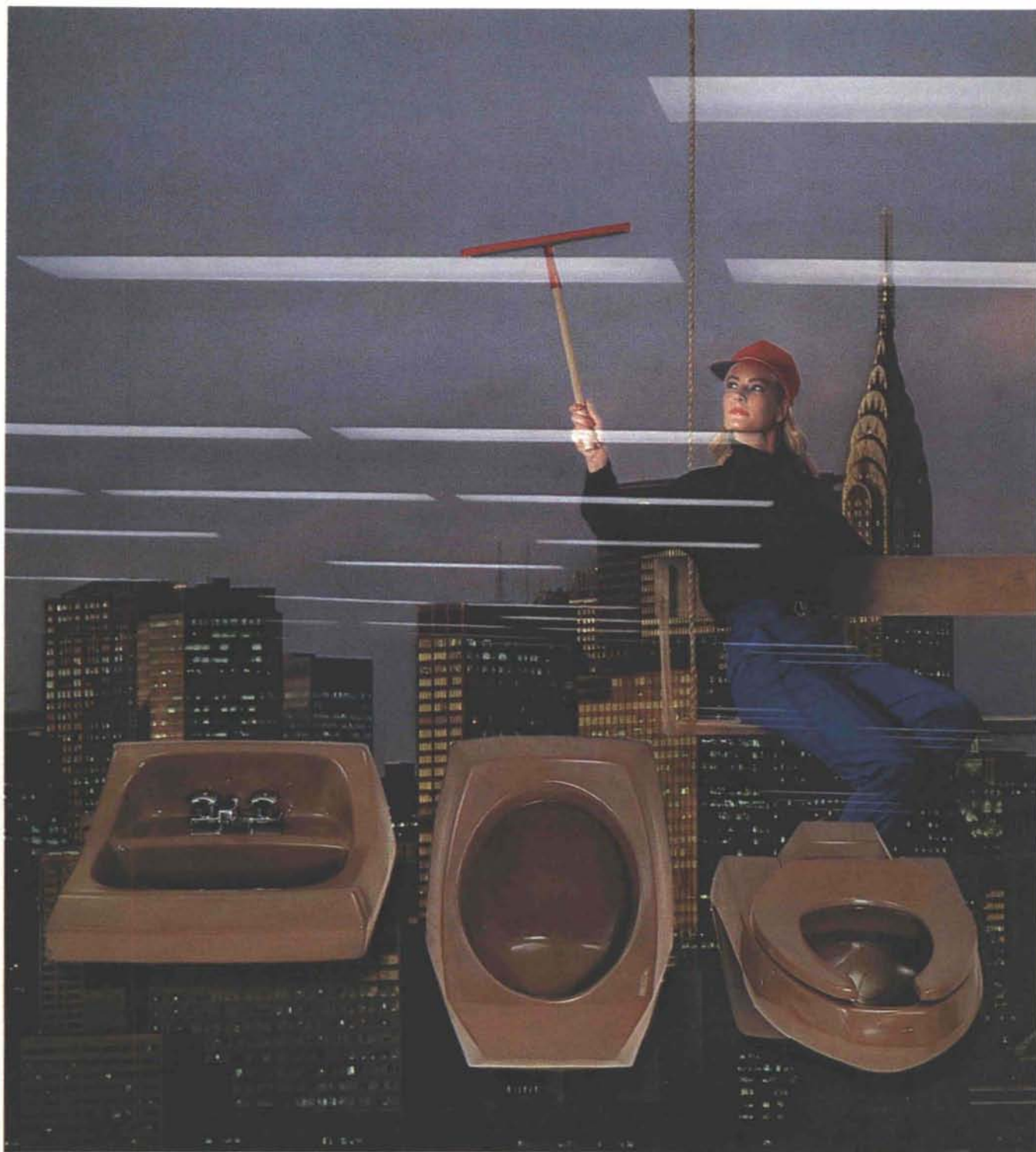


PATENT PEND.

***"THIS CONCEPT MAY VERY WELL REVOLUTIONIZE
THE CONSTRUCTION INDUSTRY"***

**6026 SECOND STREET, NW
P. O. BOX 6466
ALBUQUERQUE, NEW MEXICO 87197**

(505) 345-4451



KOHLER ELEVATES THE WASHROOM.

Now Kohler brings high fashion to new heights. With the beautiful Kingston Set™ It's a lavatory, urinal and toilet that's designed to be installed together in your commercial and public buildings. It's a trio of Kohler products that gives washrooms a consistent, coordinated look.

Because they're three of a kind. All have the same sleek cosmopolitan styling. All are up, up and away... wall-hung to ease cleaning. All are made of durable vitreous china. But above all, The Set is available in the boldest colors around town: Swiss Chocolate (shown), Parchment,

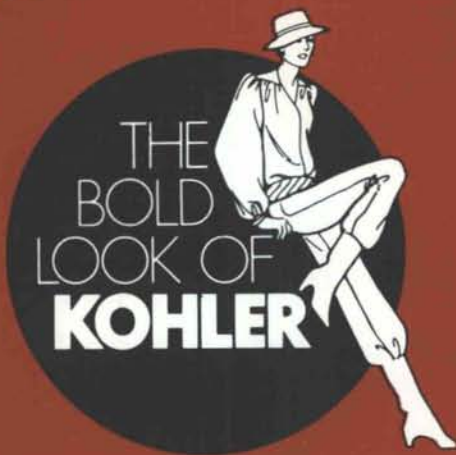
Country Grey, Black Black, Mexican Sand, French Vanilla and White.

Look into the new Kingston Set. Its style/color coordination gives you the key to the executive washroom.

See us for more information on this and all Kohler products for kitchen, bath and powder room.

THE BOLD LOOK
OF **KOHLER**

**Come
and see...**



in the showrooms at



PHC Supply Company

1000 Siler Park Road • Santa Fe, N.M. • Phone: 471-1811

Active

PLUMBING SUPPLY

1500 Candelaria N.E. • Albuquerque, N.M. • Phone: 345-8587

SHOWROOM HOURS: WEEKDAYS 8:00-5:00, SAT. 8:00-12:00

LARGEST WHOLESALE DISTRIBUTORS OF KOHLER PLUMBING PRODUCTS IN NEW MEXICO

**Dale Crawford
& Associates,
Architects, P.C.**



Entrance Plaza with flamingo pond and artificial rockwork

ENTRANCE PAVILLION, PLAZA AND SHOPS

Rio Grande Zoological Park, Albuquerque, NM

The RIO GRANDE ZOO has started an ambitious program of upgrading and modernizing its facilities, both for animals and for people. Included in the major program to improve public facilities was a plan to reorganize and expand many of the administrative facilities and organization.

The existing public control and service functions were awkward and inefficient. The existing main Zoo entrance was located at the far end of the main existing parking lot, but a considerable distance from the administrative offices. This made the cashier, security and administrative functions extremely hard to manage. Having the main entrance located where it was resulted in poor planning for the public too. Inadequate parking was available, group tour permits were inconvenient, and the entrance was non-descript. It was difficult for a visitor to locate the entrance - and exit.

Once inside the Zoo confines, the flow was disorganized and a 'free-for-all' traffic pattern resulted. Trying to find the exit to leave was laborious. A definite organization of traffic flow and exhibit pattern was badly needed.

A major Zoo function was also missing from the existing operations; there was no gift shop near the main entrance or exit and a very potential revenue source was being missed. This omission was also a loss for Zoo visitors who could not acquire souvenirs,

mementos, etc. of the Rio Grande Zoo. To culminate all the foregoing problems, the Zoo also did not have an organized nor attractive graphic signage system which led to the confusion, mixed traffic patterns and wandering visitors.

The architectural/planning firm of DALE CRAWFORD & ASSOCIATES, P.C. was selected by the City of Albuquerque to develop plans for a main new entrance, an entrance plaza with gardens & walks, gift shop and snack-bar, a new parking lot,

Exterior of Entrance Pavilion with graphic 'zoo' signs



and a new graphics system. The firm, with Dale Crawford as Principal Architect and Ray Darnell as Job Captain proceeded to design the new facilities around an established budget and criteria by the Zoo staff headed by John Moore, Director and John Roth, Assistant Director.

In order to resolve the administrative problems of cashiers, security and control as well as to meet the basic requirement of a newly established Zoo traffic route, entrance and exiting, a new main entrance pavillion was created adjacent to the existing Administrative Building. This, however, created a problem of de-emphasising the Admin. Bldg. and emphasising the entrance. The solution was to enclose the new entrance pavillion with high walls softened by planters and to recolor the Admin. Bldg. to match the existing facilities, both of which helped diminish the appearance of the Admin. Bldg. These high walls also provided a private entranceway for Zoo employees to enter the Admin. Bldg. from the new parking lot. The new entrance pavillion thereby had to project not only an architectural 'symbol' for the Rio Grande Zoo, but distinguish itself as the 'entrance' and 'exit' from without and within the Zoo grounds.

In adapting a southwestern architectural character for the new entrance pavillion, the architects utilized the concept of metal roofs buttressed by adobe piers and walls typical of many northern New Mexico buildings. A pyramid shape evolved to establish a form that would be recognizable from any angle and direction, approaching the entrance from without or searching for the exit from within. Exposed wooden trusses and fram-

ing, stucco walls and piers, brick floors all add to the 'natural' New Mexico architectural expression.

Security and cashier control were established within the pavillion and cashier operations were connected to the existing business office for better operation and security. Public toilets were planned for the public awaiting entrance into the Zoo as well as facilities inside the Zoo entrance. Rolling grills, turnstiles and ticket booths provide crowd control and security for the Zoo entrance. The entrance pavillion was connected to the main Admin. Bldg. to provide access for the business public. A private patio was established for employees recreation and break area off this passageway.

Once inside, an entrance plaza was planned to control and direct Zoo traffic into the planned routes. Planters and paving were organized around existing old cottonwood trees with ponds and streams and waterfalls flowing all around to enhance the sounds and picture of a Zoo. A 'water sculpture' was commissioned by the City Arts in Public Places and located just inside the new entrance dividing traffic entering and exiting. A Flamingo pond set into the center of the entrance plaza was created to provide a natural setting to exhibit the flamingos of the Zoo. A Flamingo House was created back into a hillside and hidden behind some of the artificial rockwork for which the Zoo is so famous.

A new gift shop, incorporated together with a new snack bar, complete with outdoor dining patio, was located near the new Primate Exhibit and on the route out of the Zoo where visitors must pass to exit. Design-



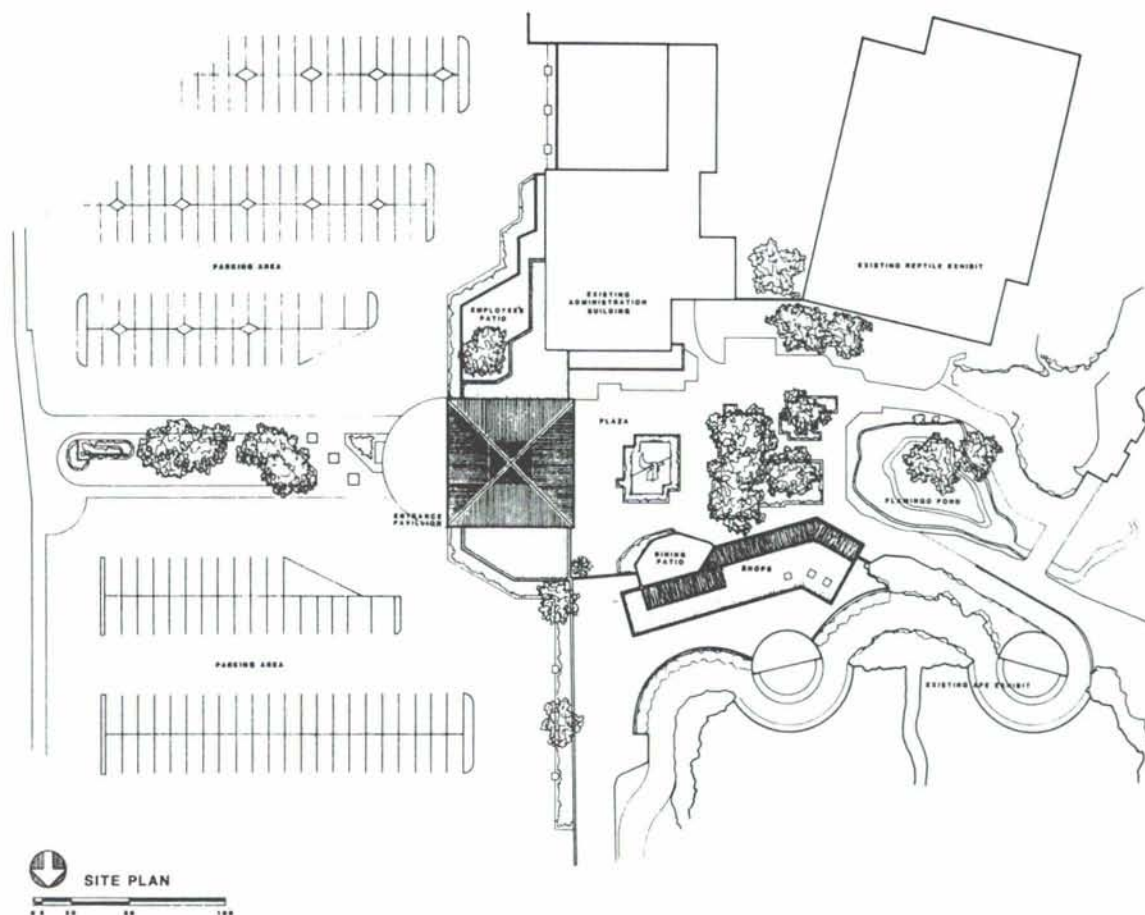
Shops and Snack Bar



Interior of Entrance Pavillion showing ticket booths and turnstiles

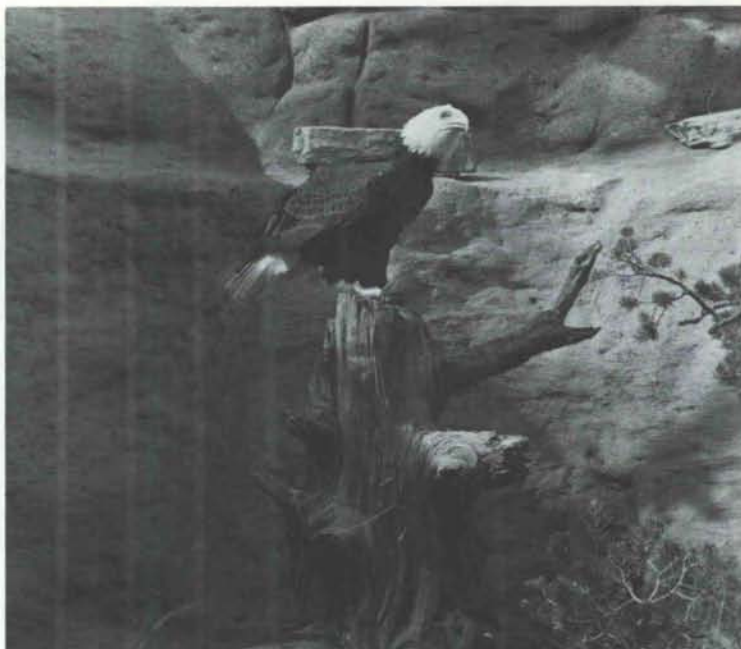
ed in an Albuquerque-old town architectural style, sculptured stucco walls, wood framed bay show windows, carved wood doors, brick floors, and a canopy of open 'latias' all portray a friendly New Mexico experience. Service to this facility is provided at the rear from an interior Zoo service drive located between the Primate Exhibit and the Shops and hidden from the public view.

Upon entering underneath the massive framework of the entrance pavillion, a new world opens up before you, and you leave the urban scene behind and enter a land of giant cottonwood trees, beautiful flowers and plants, green hillsides with cascading waterfalls and streams, realistic cliffs of rockwork all around, quiet ponds with colorful flamingos appearing like porcelain statuettes, and warm inviting stucco and wood structures greeting you. Colorful and unique graphics greet you outside the entrance, lead you inside, and inform you for directions, food, and conveniences. It all blends together to state "THIS IS THE RIO GRANDE ZOO"!



RIO GRANDE ZOO ENTRANCE, SHOPS AND PLAZA

Van H. Gilbert
Architect, AIA
Albuquerque, NM



BIRD OF PREY EXHIBIT

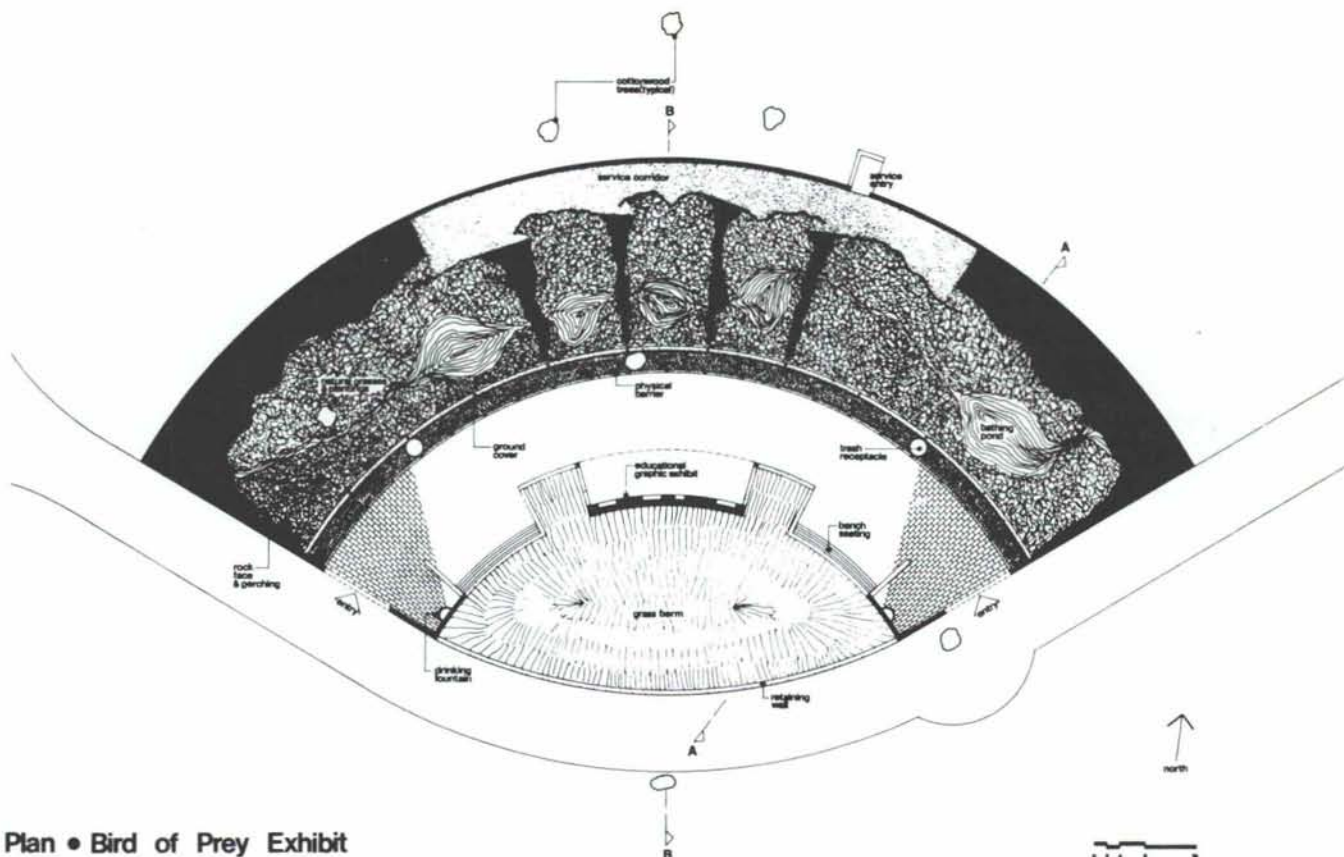
Rio Grande Zoological Park-Albuquerque, NM



Located on the Bird of Prey Exhibit site were numerous deciduous cottonwood trees which the Owner did not want removed from the unique Bosque setting. Working on-site, the Architect developed a curved form for the Exhibit including the trees as an integral part of the design. The deciduous trees became a crucial source of shade for the birds during the hot southwestern summers, in winter the trees drop their leaves and the sun then provides the needed amount of heat for the comfort of the birds.

Extensive research into the physical needs of the birds indicated that each species of bird had a particular need for the proper space for flying, perch heights and perch materials, water, shade, sun, feeding areas, and nesting sites and materials. The needs and space requirements of each species of bird were met by designing five individual enclosures within the total Bird of Prey Exhibit.

To enhance the viewing experience for the public, the Exhibit was thought of as a stage with a backdrop of artificial rock



Plan • Bird of Prey Exhibit

formations with the rock form and rock color patterned after nearby New Mexico cliffs. Native plant life was used for landscaping. This allows the viewer to see the birds in their natural New Mexico environment. To facilitate the feeling of viewing the birds in their natural habitat, a 0.039 stainless steel wire wall ("piano wire") became a nearly invisible barrier between the birds and the viewer. The Exhibit has a clearly delineated entrance way to set the mood for a viewing experience. Benches and grassy seating areas are available and an educational graphics display is incorporated into the Exhibit.

Major emphasis was placed on the needs of a pair of Bald Eagles that had been displayed at the Zoo for ten years. The eagles needed to be on view at all times, yet it was hoped that privacy could be provided for breeding purposes without making the birds inaccessible to the public, as research seemed to indicate was necessary. The openness provided by the steel beams and stainless steel wire combined with the nooks on the cliff face have successfully met these requirements. After being displayed together for ten years, the Eagles laid their first egg in April 1981, after six months in the new enclosure.



Van H. Gilbert
Architect, AIA
Albuquerque, NM



PRIMATE EXHIBIT

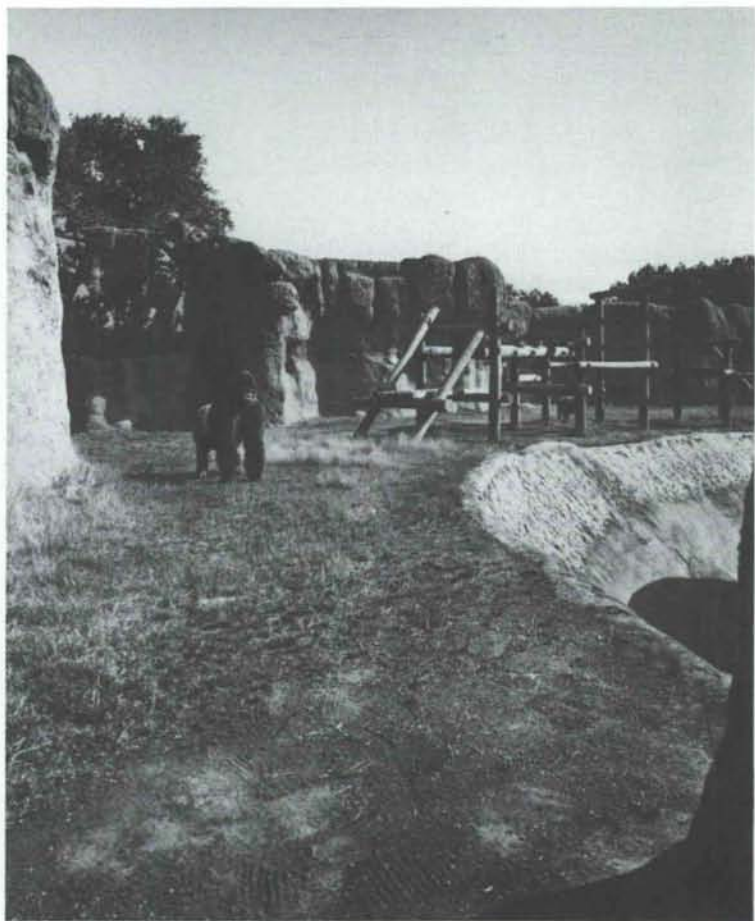
Rio Grande Zoological Park, Albuquerque, NM

The site for the Primate Exhibit of Gorillas and Orangutans was an open tract of land with few trees, on the north side of the Zoo Main Entrance and Plaza. As determined by the Zoo Master Plan, the Primate Exhibit is the last exhibit visited before departure. For this reason it was important to shield the view of the gorillas and orangutans from the Main Entrance or curious visitors would wander over and circulate in a reverse circulation pattern.

Accordingly, it was important to have the Primate Exhibit exit make a positive impact on the Zoo Plaza. This was accomplished by carrying the artificial rock from the exhibit interior to the exhibit exterior, facing the Entry Plaza. A stream flows out of the rocks and forms a pool, tying the Exhibit to the Entry Plaza. The poured-in-place concrete was juxtaposed against the artificial rock. The concept was to design the geometric concrete forms to look as if they were chiseled out of the artificial rock formation.

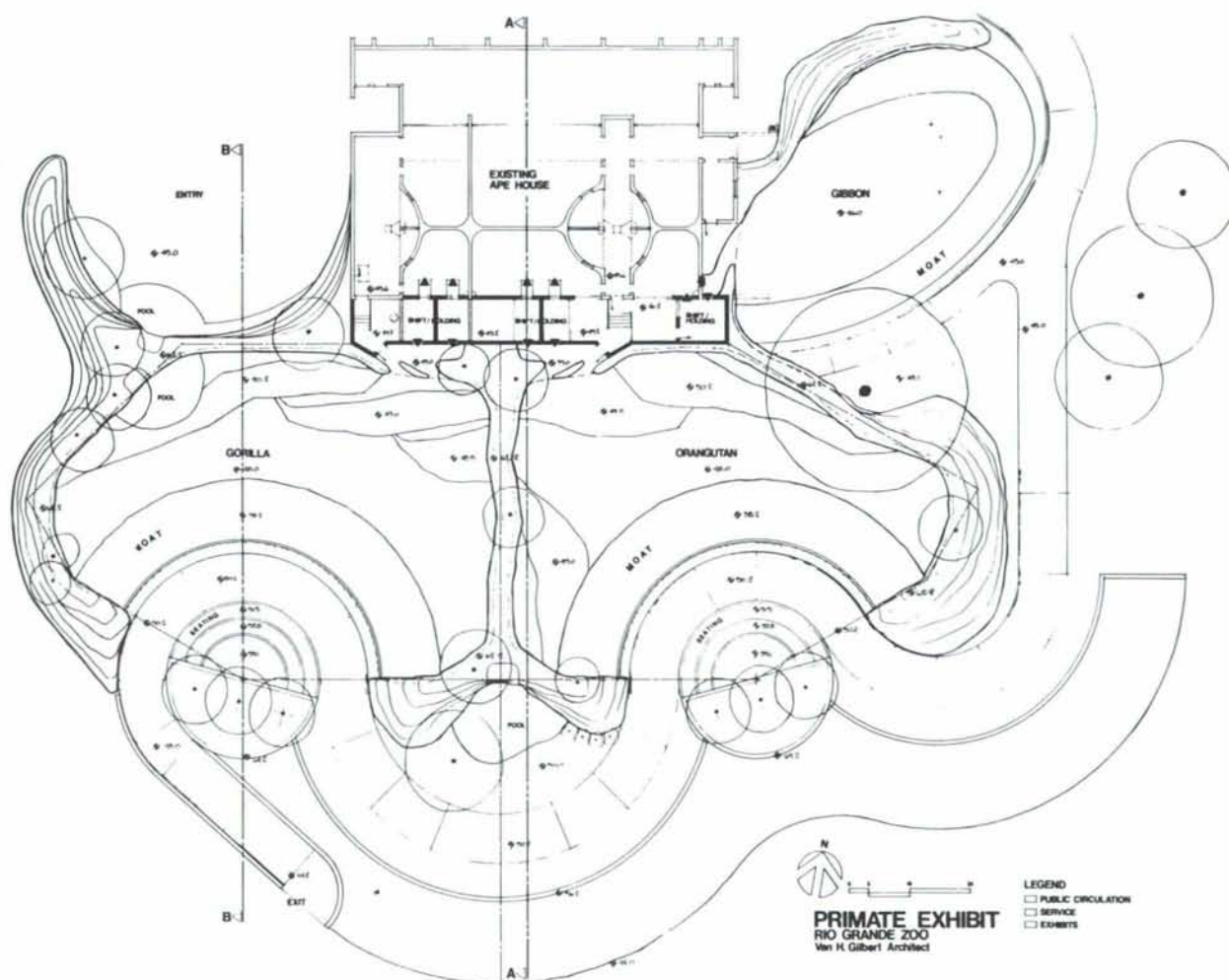
Ramps make the nine-foot above-grade Primate Exhibit accessible for the handicapped, baby carriages, and for maintenance vehicles.

The artificial rock formations were designed as a stage set to simulate the natural type of environment in which the animals could



be found in the wild. A mixture of native African grasses was planted in the enclosures to enhance the natural setting. The cliff faces on the interior of the exhibit were designed with overhangs as a security measure to prevent the animals from climbing out, as well as to provide shade for the animals. The large timber play structures also provide shade. The natural looking rock formations have many facets and crevices. Local mountain climbers were called in to scale the rock faces and check for possible toe and hand holes before the animals were moved in.

Also for security there is an unobtrusive, yet very effective, physical barrier between the animals and the viewers—a dry moat. The water table is five feet below grade, so to achieve the 14 foot depth necessary for the dry moat, the site was built up nine feet. The dry moat is 15 feet across and a lip extends out from the viewer side. The dimensions for the moat were the result of detailed research into the capabilities of gorillas and orangutans. Play structural materials and connections are also designed for security.



You've Tried All The Rest Come Home To The Best

DRISCOLL BUILDING MATERIALS, INC.

7901 4th STREET, N.W. • (4th at Ranchitos) • ALBUQUERQUE, NEW MEXICO 87114 • (505) 897-2244

Andersen® High-Performance Insulating Glass

State-of-the-Art Glazing

A home with Andersen® High-Performance insulating glass can be more energy-efficient than a home with no windows at all. It takes double-pane insulating glass one step further to save substantially more energy year-round in all climates.

How Does It Work?

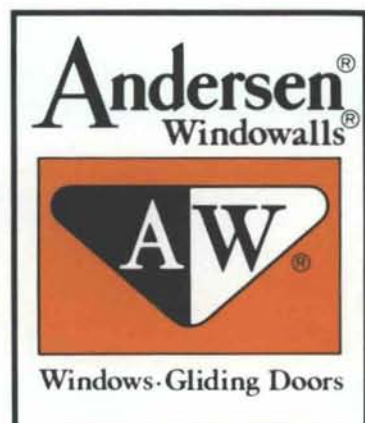
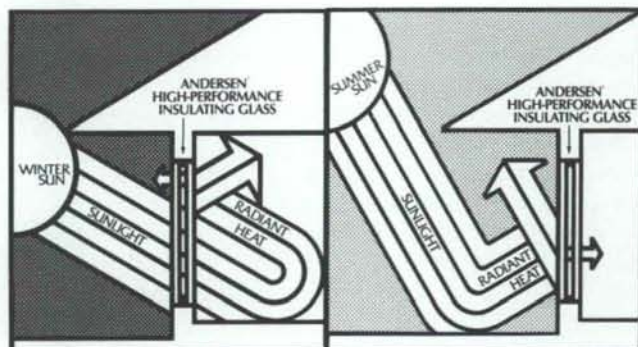
Both heat loss in colder months and heat gain in warmer months occur in just three ways: heat convection, heat conduction and heat radiation. High-Performance insulating glass works to control all three:

1. The glass is used to slow down convection (the transfer of heat by the movement of air).
2. The air space between the panes hinders conduction (heat transfer through a solid medium).
3. A microscopically thin transparent metallic coating is permanently bonded to the glass between the panes to help reduce radiation of heat (the transmission of radiated heat by electro-magnetic waves).

Most windows have dealt with convection and conduction adequately, but not radiation. Andersen® High-Performance insulating glass substantially reduces all three sources of loss and gain. The special coating increases the efficiency of double-pane insulating glass by greatly reducing the flow of radiant heat between the panes. This means less energy consumption.

The special coating also filters out 71% of ultraviolet rays. These are the harmful rays that fade and deteriorate some drapes, carpeting and upholstery. However, the coating won't reduce the light indoor plants need.

Andersen® High-Performance insulating glass is designed to increase energy efficiency 365 days a year, 24 hours a day, in all weather on all sides of the home. High-Performance glass is available in Andersen® Perma-Shield casement, awning and double-hung windows, patio door and roof windows. To learn more about the energy performance features for heating and cooling months, contact your Andersen® dealer representative, Driscoll Building Materials, Inc.

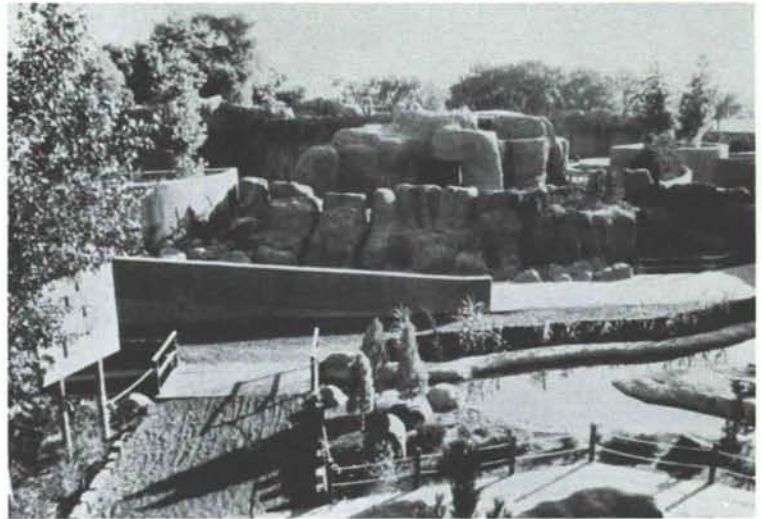


Come home to quality. Come home to Andersen.

To obtain maximum solar gain, the exhibit orientation is to the south, allowing the primates to be warm enough to remain outdoors year round. The animals are always moved inside for the night.

Excellent close-up views of the animals are possible since the convex design of the public circulation pattern allows the public to be surrounded by the exhibit. As the visitors progress through the exhibit area, they are equi-distant to the enclosure at all times. During construction the design of the transition area between the gorilla and orangutan enclosures was modified to incorporate a cave where the public could enter and view the animals at close range through large windows of 1 1/4 inch thick bullet-resistant glass. These windows have become a major attraction for both the public and the primates. The gorillas and orangutans come right up to the glass and interact with the public. In this way the viewer can closely observe the size, physical features, and behavior of the primates. Views from the cave window or at the main viewing area are not impeded by the centrally-located play structures or by the overhangs. The animals are in clear view at all times.

A multi-purpose, two-tier viewing terrace is incorporated into the exhibit. These elevated grassy areas can be used for viewing assistance for children, for long-term viewing, or for resting. The viewer using these terraces is looking north so the sun is not in the eyes. Planters at the top of the terraced seating area were planted with large cottonwood trees for shading. The viewing terraces



were planted with bluegrass for high use durability and low evergreen junipers were planted along the railing as a low scale barrier as well as for aesthetic reasons.

To utilize the old primate building for sleeping quarters for the gorillas and orangutans, a 2060-square-foot building was constructed to house complex circulating passageways for movement of the primates from inside to outside. The new building was designed with overhead keeper circulation and special reinforced steel doors for separating the primates from the keeper and from the outdoor exhibit area. Heating for the addition is provided by passive solar heat stored in the massive concrete and concrete block walls and floors. The passive solar heat is brought in through skylights equipped with "Sun Bender" reflectors forcing the heat down into the floor. The entire roof is fitted with skylights. There is no backup heating. Natural daylighting is also brought in with the skylights and no artificial light is required during the day. Roof fans provide ventilation.



CROSS SECTION B



CROSS SECTION A





reliable reproductions

- Blueprints
- Graphic Reproductions
- Drafting & Engineering Supplies
- Surveying Equipment

inc.

**PICKUP/DELIVERY
EXPRESS LINE
247-3562**

1100 Second Street NW
Albuquerque, New Mexico 87102
(505) 247-1578

IF YOU THINK YOU HAVE TO GO TO A CAD SPECIALIST TO GET THE RIGHT CAD SYSTEM, YOU'RE RIGHT.

But you don't have to go out of your way.

Because Businessland has a computer aided design specialist to help put together the right microcomputer based CAD system for you. And experts in our learning center can help you get the most out of your system.

So if you thought you needed a specialist, you were right. But if you thought Businessland couldn't be that specialized, you were wrong.

BUSINESSLAND®

Where business people are going to buy computers.

ALBUQUERQUE: 6601 Menaul Blvd., N.E., 883-1833. Now more than 60 locations throughout the U.S.



Temple Albert - Albuquerque, NM

Building Data:

Gross building area: 19,477 sq. ft.
 Assembly room - seats 160
 Social Hall & Kitchen - seats 352
 Library
 Classrooms - 10
 Administrative and Conference areas.
 Construction: Rock face and stucco; steel frame.
 Cost: \$1,200,000.

Site:

9 acres,
 To include soccer field.

Second Phase:

To include sanctuary, chapel, & school.

Consultants & Architects:

Architect:
 Norton & Assoc., Inc.
 Structural Engineer:
 Chavez/Grievies
 Landscape Architects:
 Morrow & Worley
 Mechanical & Electrical Engineers:
 Charles Thomsen & Associates
 Drainage Engineer:
 John Armstrong



KITTS ENTERPRISES INC.

5815 EDITH BOULEVARD, NE
 ALBUQUERQUE, N.M. 87125

Alder, Ash, Basswood, Birch,
 Aromatic Cedar, Spanish Cedar,
 Cherry, Honduras Mahogany,
 Phillipine Mahogany, Maple, Red
 Oak, White Oak, Ponderosa Pine,
 Sugar Pine, Poplar, Sassafras,
 Walnut, and Willow.

Stairway Components, Adhesives,
 and Abrasives.

Custom Milling and Hardware.

In Fact — Over 800 Items in Stock
 for High Quality, Architectural,
 Cabinet, Furniture, and Finish Work!

(505) 345-8135

New Mexico Toll Free:
 1-800-432-6820

Outside New Mexico Toll Free:
 1-800-545-6104

NMA NEWS

NEW MEXICO SOCIETY OF ARCHITECTS OPENS STATE HEADQUARTERS IN SANTA FE

New Mexico Society of Architects have opened a State Office and retained Dicki Ryals of Santa Fe as Executive Director as of May 1, 1985. The new headquarters is located at 621 Old Santa Fe Trail, Suite 7, Santa Fe.

Ms. Ryals will continue with NMSA's Legislative Lobbying as well as coordinate all issues concerning New Mexico Architects on a State level.

Consulting Services & Associates, which houses NMSA's office, is owned and operated by Ms. Ryals, and focuses on Public Relations, Legislative Lobbying and Governmental Affairs for other clients as well as NMSA.



Residential
Commercial
Industrial

HIGH QUALITY, LOW COST
NO INSTALLATION FEES
ALL LEASE PAYMENTS APPLY TO THE PURCHASE OF SYSTEMS

- INTRUSION ALARMS
- CLOSED CIRCUIT VIDEO SYSTEMS
- ACCESS CONTROL SYSTEMS
- REMOTE, MEDICAL ALERT PANIC BUTTON SYSTEMS

24 HOUR CENTRAL STATION MONITORING

5629 Paradise Hills Blvd. N.W.

(505) 898-6487

new mexico architecture

nma

Published bi-monthly by New Mexico Society of Architects, American Institute of Architects, a non-profit organization. Editorial Correspondence should be addressed to John P. Conron, Box 935, Santa Fe, N.M. 87504. (505) 983-6948.

Editorial Policy: Opinions expressed in all signed articles are those of the author and do not necessarily represent the official position of the publishing organization.

Additional copies of NMA available from John P. Conron FAIA/FASID, P.O. Box 935, Santa Fe, N.M. 87504.

Change of address: Notifications should be sent to New Mexico Architecture, Box 935, Santa Fe, N.M. 87504 (505) 983-6948 at least 45 days prior to effective date. Please send both old and new addresses.

Subscriptions: Write Circulation, New Mexico Architecture, Box 935, Santa Fe, N.M. 87504. Single Copy \$1.50. Yearly subscription \$5.00.

Advertising: Send requests for rates and information to Carleen Lazzell, Advertising Editor, 8515 Rio Grande Boulevard, N.W., Albuquerque, N.M. 87114, 505/898-1391.

INDEX OF FIRMS who make possible the publication of NMA and the page upon which their message is found:

American Business Interiors	4
Builders Block	19
Businessland	16
Cogeneration Development Co.	2
Crego Block Co.	6
Crego Block Co.	18
Driscoll Building Materials, Inc.	14
Featherlite Building Products Corp.	4
Great House	5
Hydro Conduit	20
Kitts Enterprises, Inc.	17
Kohler	Insert
Mossman Pools	4
Radar Awning & Upholstering, Inc.	4
Reliable Reproductions, Inc.	16
Santa Fe Lights	18
Sundance Security Systems	18
TypArt	19
Western Building Supply Co., Inc.	19

Printed by Hall-Poorbaugh Press, Inc., Roswell, New Mexico



CONCRETE MASONRY

PRESTRESSED CONCRETE

CREGO BLOCK CO.

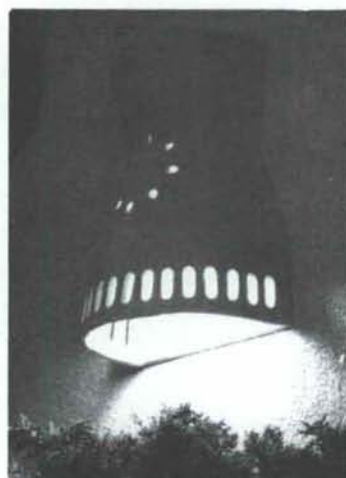
Manufacturers of Autoclaved Scoria Block

Custom Masonry Units

Slumpblock Pavers

6026 SECOND STREET, N.W.
P.O. BOX 6466
ALBUQUERQUE, N.M. 87197

(505) 345-4451



SANTA FE LIGHTS

ARCHITECTURAL
LIGHTING FIXTURES
IN SOUTHWEST
ADOBE STYLE

INDOOR & OUTDOOR
WALL, CEILING AND
HANGING LIGHTS,
CHANDELIERS &
GARDEN LIGHTS

FRANK WILLETT / THE SANTA FE POTTERY
323 Guadalupe Street, Santa Fe, New Mexico 87501
(505) 983-9011 / (505) 471-0076



BUILDERS BLOCK

Members:
New Mexico Concrete
Masonry Association
National Concrete
Masonry Association

**Quality Concrete Masonry Products
and many allied building materials.
Serving New Mexico and West Texas
for over a quarter of a century.**

P.O. Box 1633
Roswell, NM 88201
505/622-1321

P.O. Drawer FF
Las Cruces, NM 88001
505/524-3633

Telephone
El Paso
915/532-9695

Beauty & Performance... The Perfect Pair!

Weather Shield offers you both
in the line of quality wood windows
and steel insulated entry systems.



All Weather Protection - Always!



Western Building Supply Co., Inc.

4201 Los Angeles, NE

Albuquerque, New Mexico 87113

(505) 823-2500

TypArt

- Typesetting
- Exhibitory
- Logos
- Editing
- Composites
- Visual Aids
- Illustration
- Brochures
- Print Brokering

THE DESIGNERS' DESIGNER

Specializing in services to the creative community —
architects, engineers, practitioners of the visual, literary
and performing arts.

TypArt
925 Sixth Street Northwest, Suite 1
Albuquerque, New Mexico 87102
505-242-9207

Postmaster: Address Correction Requested
New Mexico Architecture
8515 Rio Grande Blvd., N.W.
Albuquerque, NM 87114

Bulk Rate
U.S. Postage
PAID
Roswell, N.M.
Permit No. 47



**FOR
ENDLESS
VARIETY**



**EXPOSED
AGGREGATE**



HYDRO CONDUIT CONCRETE

2800 2ND STREET S.W. ALBUQUERQUE, NEW MEXICO 87103

FINE ARTS LIBRARY B52
UNM
ALBUQUERQUE NM 87131