

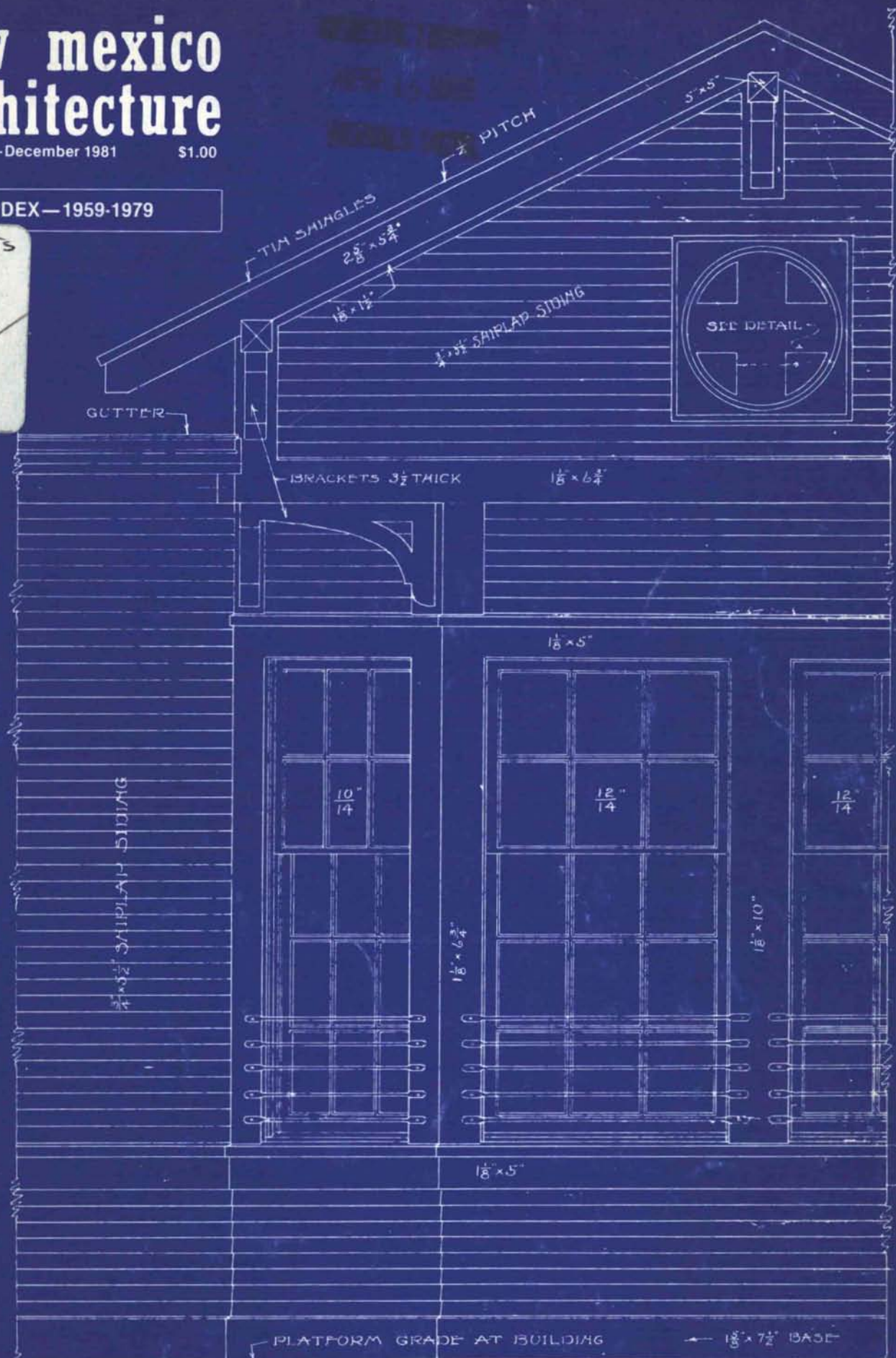
# new mexico architecture

November—December 1981

\$1.00

INDEX—1959-1979

no Arts  
VA  
14  
1.23  
no. 6



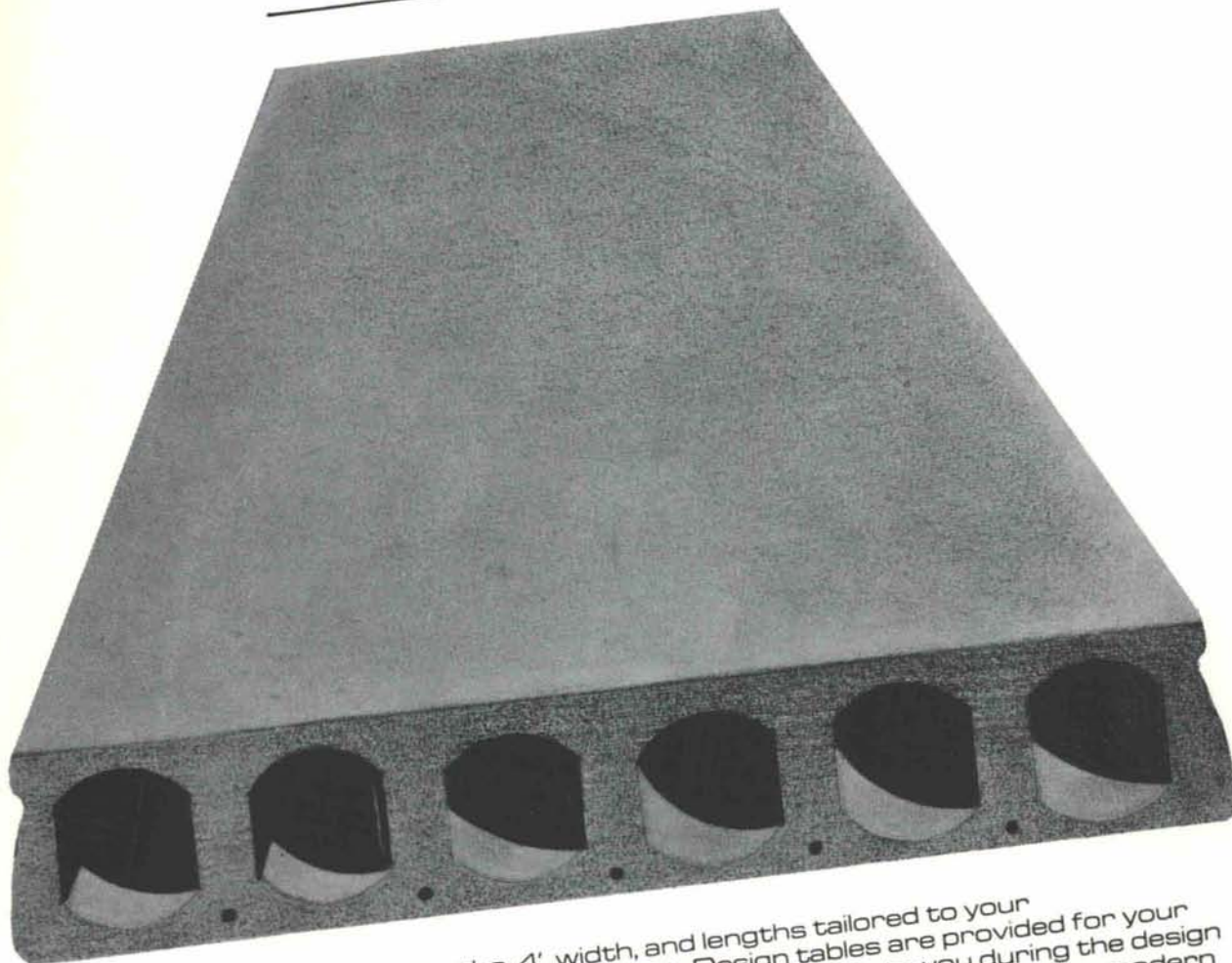
EXTERIOR ELEVATION OF BAY WINDOW FOR INTERLOCK MACHINE  
SCALE 1"=10"



From  
**Crego Block Co.**

**DY-CORE**®

**The right product for your next project.**

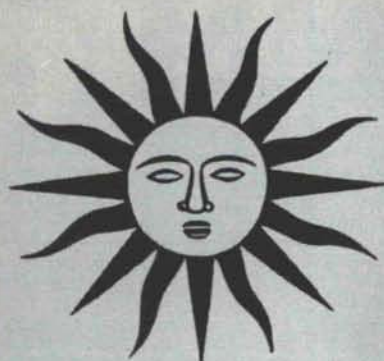


Fabricated in 8" and 12" depths, 4' width, and lengths tailored to your requirements. Dy-Core is a fully tested product. Design tables are provided for your use. Competent engineers are available to provide assistance to you during the design phase of any project. Dy-Core speeds construction and was literally made for modern building techniques. Inclement weather need not stall the progress of construction. Dy-Core makes possible a reduction in design time and total building costs because of its simplicity and by maintaining complete product uniformity.

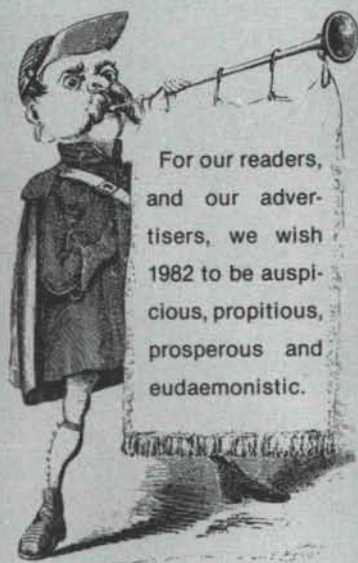
Let's talk about a lower total construction cost for your next project. Dy-Core is ideal for just about any type of job: hospitals, nursing homes, low/medium/hi-rise apartments, parking structures, single or multi-family residences, warehouses, commercial and industrial buildings.

CREGO BLOCK COMPANY  
6026 SECOND STREET, N.W.  
ALBUQUERQUE, N.M. 87107  
(505) 345-4451





• vol. 23 no. 6 • • nov.-dec. 1981 • new mexico architecture



For our readers,  
and our adver-  
tisers, we wish  
1982 to be auspi-  
cious, propitious,  
prosperous and  
eudaemonistic.

*FINE ARTS*  
*NA*  
*1*  
*N4*  
*1959-79*  
*index*  
**nma**

 The Editor's Column 3

**NMA News 7**  
NAWIC 1982 Convention  
Monday Lecture Series at UNM  
Institute for Environmental Education Monograph Series

A Twenty Year Index 1959-1979 9

Advertisers Index 18

(Cover: Working Drawing Detail  
—Magdalena Railroad Station—dated November 1910)

—Official Publication of the New Mexico Society of Architects, A.I.A.—

**Society Officers**

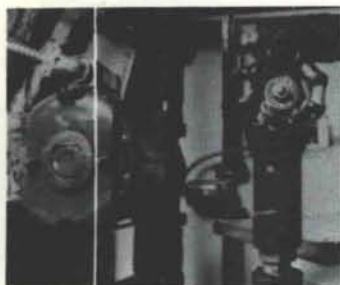
President—Robert J. Strader, Jr.  
President-Elect—Dale L. Crawford  
Secretary-Treasurer—Wayne A. Connell  
Director—John P. Conron, FAIA  
Director—Jon Moore  
Director—Beryl Durham  
Director—Mark Jones  
William L. Burns  
Director—Randall L. Kilmer  
SAIA—Ms. Joan Schmid

**Commission for NMA**

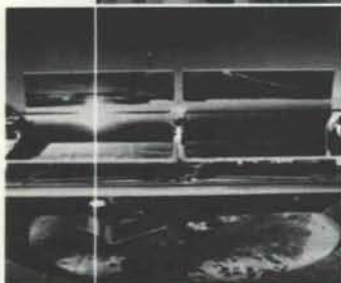
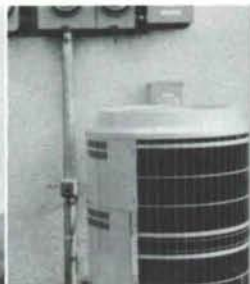
John P. Conron, FAIA/FASID,—Editor  
  
Mildred Brittelle—Advertising Manager,  
Accounting—and Circulation  
425-A Val Verde, S.E.  
Albuquerque, NM 87108  
(505) 265-7010

Charles E. Nolan, Jr.





**Passive and active solar,  
photovoltaic, wind, waste  
heat recovery, and PNM**



Jerry Neal is keeping track of the development of photovoltaic cell electric generation technology.

Steve Pyde monitors the design and performance of passive solar homes with electric backup heating systems.

Pam McKeever is working to find out how cost effective waste heat recovery systems are for residences and commercial buildings.

Tom Nesmith is testing active solar systems on new homes to see if these systems can be made both simple and cost effective.

Steve Albright is finding out whether wind-generation systems are going to prove cost effective in isolated regions of the state.

John Noble is monitoring the application of solar and conservation techniques to commercial buildings.

Dave Summers is measuring how currently available solar hot water systems work on new homes and retrofit to existing residences.

They're all PNM engineers. Their job is to evaluate new energy and conservation sources. Are they cost effective? Are they safe? What impact will they have on electric demand and when will the demand occur? How can they benefit the customer?

The engineers' research is on technology's leading edge. They apply that research every day, helping PNM's residential and commercial customers interested in waste heat recovery, wind energy, photovoltaic or various solar systems. You, too, can find out from PNM how cost effective your system will be—before you build it.

For information or assistance on any similar project, call the PNM EnergyLine, 1-800-432-6881.

**PNM**  
PUBLIC SERVICE COMPANY  
OF NEW MEXICO





## NAWIC SCHEDULES 1982 ANNUAL CONVENTION & TRADE SHOW IN ALBUQUERQUE, NEW MEXICO

The National Association of Women in Construction (NAWIC) has scheduled its 27th Annual Convention and 1st Annual Trade Show, September 19-23, 1982, at the Convention Center in Albuquerque, New Mexico.

Activities will get underway with a pre-convention Welcome Party on Sunday, September 19, to officially open the Convention & Trade Show, which is scheduled to run two days during the three day convention.

The Regent Hotel has been designated as the headquarters hotel. An additional 1,000 sleeping rooms have been blocked at six other leading hotels to accommodate the expected record attendance by NAWIC members, guests, and trade show exhibitors. Free transportation will be provided for conventioners and exhibitors to and from the Convention Center and outlying hotels where NAWIC space is reserved.

The 1982 NAWIC Convention & Trade Show theme, "NAWIC... the Sky's the Limit"—reflects the many opportunities for Association members to participate in outstanding seminars on professional development; hear well-known construction industry speakers; and, enable exhibitors to make and renew business contacts—while capitalizing on Albuquerque's claim to fame as the "Hot Air Balloon Capital of the World."

NAWIC is a professional construction association with membership open to any woman actively employed in the construction industry. At the present time, there are approximately 9,500 individual NAWIC members—45% administrative/management, 30% accounting/controllers; 15% clerical; 5% architects; 5% job-site—representing construction firms across the U.S. and Canada, who annually spend billions for construction materials, supplies, and equipment.

Suppliers and/or distributors in all categories of building materials, heavy equipment, office equipment and supplies, and construction-related service businesses interested in reserving exhibit space should plan to do so early. Exhibitor information can be obtained by calling or writing:

Betty Kornegay, Executive Director  
National Association of Women in Construction  
P.O. Box 181068  
Fort Worth, TX 76118  
Telephone (817) 284-7961

## MONDAY LECTURE SERIES CONTINUES ON UNM CAMPUS.

The School of Architecture and Planning at the University of New Mexico, Albuquerque, continues its regular Monday Lecture Series. Each lecture begins at 5:30 pm and will be held in the SUB Theater, Student Union Building on the UNM campus. Admission is free.

Monday, 1 March BRUCE GOFF, Architect. *The Architecture of Bruce Goff*

Monday, 8 March GEORGE ANSELEVICIUS, Dean of Architecture and Planning, UNM. *Works and Thoughts*

Monday, 22 March JOHN DAISH, Professor of Architecture Victoria University, Wellington, New Zealand. *Architecture in New Zealand*

Monday, 29 March LAWRENCE HALPRIN, Environmental Designer. *Art of the Landscape*

Monday, 5 April SUSANA TORRE, Architect, Educator. *Architecture Between Past and Future*

Monday, 12 April ANTOINE PREDOCK, Architect, Albuquerque. *Recent Work*

## INSTITUTE FOR ENVIRONMENTAL EDUCATION MONOGRAPH SERIES

The intent of the IEE Monograph Series is to share work

in progress, disseminate completed research, and to make available out of print publications by affiliated authors.

Prices listed pertain to stapled xerox copies and they include handling and mailing in the United States. For spiral bound monographs, please add \$1.50 per copy.

To order items, please prepay and send check made out to "INSTITUTE FOR ENVIRONMENTAL EDUCATION". University of New Mexico, 2414 Central S.E. Albuquerque, N.M. 87106

1. Gray, C., et. al., *Public Building Accessibility: A Self Evaluation Guide*. 62 pages. (Offset, 1978)—A graphic guide with checklists of requirements for barrier free design. \$ 7.50
2. Bartlett, D., et. al., *User Participation and Requirements in Planning Navajo School Facilities*. 102 pages (1978)—Post-occupancy evaluation of Navajo Schools and development of culture-responsive design criteria. \$10.00
3. Preiser, W.F.E. (Ed.), *Programming For Habitability*. 119 pages (Offset, 1975)—Proceedings of a symposium on facility programming for large institutional clients. to be announced.
4. Preiser, W.F.E. (Ed.), *Psyche and Design*. 63 pages (1975)—A collection of papers on cultural, spatial and psychological phenomena as they relate to the designed environment. \$ 7.50
5. Gidel, J., et. al., *Evaluation of a Congregate Retirement Residence and Housing Preferences of Prospective Occupants*. 103 pages (1975)—A post-occupancy evaluation using multi-method data gathering, including picture preference testing. \$10.00
6. Rohane, K.P. Preiser, W.F.E., et. al., *Post-Occupancy Evaluation of Rural Medical Clinics: Five Case Studies in New Mexico* (preliminary draft) 42 pages (1977)—Design recommendations for space and environmental requirements in new and rehabilitated rural medical clinics. \$ 5.00

(Continued Page 18)



# TELECONFERENCING. TURN YOUR PHONE INTO A CONFERENCE ROOM.

---



Architectural projects often demand mid-course adjustments in design, schedules or materials. And Teleconferencing can help you deal with these changes in a productive and cost-effective way.

It can be as simple as placing a conference call, either through an operator or with Custom Calling\* features. Or add speaker-phones or portable conferencing equipment so more people can participate. You can even include facsimile machines for immediate exchange of diagrams, photos, drawings and documents.

So you can serve your clients conveniently and professionally, while saving precious time and expenses you used to spend on travel.

Teleconferencing. A smart way to do business in a fast-paced world. For more information, call 1-800-525-2323 toll-free. Or send the coupon below. **Mountain Bell.**

Yes! Show me how Teleconferencing can help my Architectural firm.

Name \_\_\_\_\_

Company \_\_\_\_\_

Address \_\_\_\_\_

City \_\_\_\_\_

State \_\_\_\_\_

Zip \_\_\_\_\_

Phone \_\_\_\_\_

Send to Mountain Bell Sales Center,  
P.O. Box 820, Denver, Colorado 80201

\*May not be available in some areas.



**The knowledge business**

# INDEX—NEW MEXICO ARCHITECTURE-1959-1979—

*New Mexico Architecture* began as a monthly magazine with the first issue dated March, 1959. It stumbled along through that first year with 2 so-called "professional" editors and increasing debts until it landed in the capable hands of David Gebhard, then Director of the Roswell Museum and Art Center. Under David's editorial leadership the magazine took on a new look, better contents and set itself upon a sound financial foundation. With the March-April, 1960 issue *NMA* began its bi-monthly schedule.

(Although I, the editor for more years than I care to count, have gotten away out of the regular schedule this

past year, I shall pull the magazine and myself back in to the proper synchronization during these early months of 1982.)

Because of the generosity of the New Mexico State Library, we are able to publish this comprehensive index for the first 20 years of *New Mexico Architecture* magazine. We are particularly indebted to Orlando Romero, who initiated the project and supervised the work of completing the index and to Ann Kunz, who spent the long hours that stretched from weeks into months compiling the data and finally preparing the index.  
J.P.C.

## SUBJECT LISTING

ADOBE-arches, characteristics of, fired, stabilized  
ALVARADO HOTEL  
AMADOR HOUSE  
ANASAZI  
ARMIJO (NESTOR) HOUSE  
ARROYO HONDO MORADA  
ART IN ARCHITECTURE  
AZTEC MILL

BACA HOUSE  
BACA (SEVERO) HOUSE  
BERGERE (A.M.) HOUSE  
BENALILLO COUNTY  
BOMB SHELTERS  
BOND ISSUES  
BORREGO HOUSE

CANALES, STONE  
CASTANEDA HOTEL  
CHARLES ILFELD COMPANY BUILDING  
CHARLES ILFELD COMPANY WAREHOUSE  
CHEMISTRY BUILDING, UNIVERSITY OF NEW MEXICO  
CHIMAYO  
CHURCH ARCHITECTURE  
CHURCHES  
CLIMATE ANALYSIS  
COLONIAL ART  
COMMERCIAL BUILDINGS  
COMMUNES  
COMMUNITY BUILDINGS  
CONTEMPORARY ARCHITECTURE IN NEW MEXICO  
CORO  
CRISTO REY CHURCH  
CURRY HOUSE

DEFENSE ARCHITECTURE  
DOLAN HOUSE  
DORSEY MANSION

EL NAVAJO HOTEL  
EL ORTIZ HOTEL  
EL SANTUARIO DE NUESTRO SENOR DE ESQUIPULA

EL TORREON  
EL ZAGUAN  
EMBUDO WATERSHED ARCHITECTURE  
ENERGY-conservation of  
ENVIRONMENT

FIREPLACES, ADOBE  
FORT MARCY  
FRANCE

GAY-WAGNER HOUSE  
GOVERNMENTAL BUILDINGS

HEWETT (EDGAR LEE) HOUSE  
HISTORICAL ARCHITECTURE-preservation of  
HUNING CASTLE

INSURANCE

JACAL

KIT CARSON HOUSE

LA FONDA  
LAS CHAVEZ HOTEL  
LATIA  
LAUREANO CORDOVA MILL  
LOBATO (ROQUE) HOUSE  
LONG HOUSE, CHISUM RANCH  
LORETTO ACADEMY AND CHAPEL  
LUHAN (MABLE DODGE) HOUSE

MANTA DE TECHO  
MARTINEZ (DON ANTONIO SEVERINO) HOUSE  
MASONIC TEMPLE  
MILLS, GRIST  
MONTEZUMA HOTEL  
MORADA  
MUD-plaster, puddled  
MUSEUM OF FINE ARTS

NORTHERN NEW MEXICO  
NUSBAUM HOUSE

OCCIDENTAL BUILDING  
OCTAGON HOUSE  
ORTIZ HOUSES  
OTTO HOUSE

PADRE GALLEGOS HOUSE  
PALACE OF THE GOVERNORS  
PERU  
PLANNING-city, land use, urban  
POLAND  
PREHISTORIC ARCHITECTURE  
PUEBLO ARCHITECTURE

QUARRY STONE

RAABE HOUSE  
RANCHOS DE TAOS MISSION CHURCH  
RESIDENTIAL BUILDINGS  
RODRIGUEZ (JUAN) HOUSE  
ROOFS-mansard, pitched tin or iron, slate  
ROSARIO CHAPEL  
RUSSIA

SAINT FRANCIS CATHEDRAL  
SAINT FRANCIS OF ASSISI MISSION CHURCH  
SAN AGUSTIN MISSION CHURCH  
SAN FELIPE DE NERI CHURCH  
SAN JOSE DE GRACIA MISSION CHURCH

SAN MIGUEL CHAPEL  
SAN MIGUEL CHURCH  
SANTA ROSA DE LIMA DE ABIQUIU  
SANTOS  
SCHOOLS  
SELENITE  
SENA PLAZA  
SHUTTERS  
SOLAR ENERGY  
STAMPED METAL PANELING

TERRONES  
TORREON  
TULLY (PINCKNEY R.) HOUSE

UGLINESS AROUND US  
UNIVERSITIES—and bond issue

VIGAS  
VIGIL (DONACIANO) HOUSE

WAGNER HOUSE  
WATROUS HOUSE  
WOOD VENEER  
WORLD'S FAIR



## ARCHITECT OR DESIGNER

### ARCHITECTS, ASSOCIATED

March-April 1963: p. 29

### ARCHITECTS TAOS, THE

May-June 1971: pp. 11-17; Jan.-Feb. 1972: p. 12

### BARKER, Hildreth

May-June 1968: p. 13

### BAYER, Herbert

March-April 1965: pp. 15-19; Nov.-Dec. 1969: p. 12

### BIDDLE, Robert G.

May-June 1964: p. 18

### BOEHNING, Joe

May-June 1964: p. 14; Nov.-Dec. 1967: p. 21; May-June 1968: pp. 12, 15; Nov.-Dec. 1968: p. 11; May-June 1972: p. 11; May-June 1974: pp. 13-17; Nov.-Dec. 1976: pp. 10-14; Jan.-Feb. 1978: p. 7

### BOEHNING & Boehning

Sept.-Oct. 1960: pp. 12, 13; Nov.-Dec. 1961: p. 21

### BOEHNING/Protz

Nov.-Dec. 1959: pp. 9 & 10, 11, 12

### BRITTELLE, W. Miles, Jr.

Nov.-Dec. 1962

### BURKE, William E., Jr.

July-Aug. 1959: p. 12; March-April 1961: pp. 11, 12

### BURRAN, James A., Jr.

Jan.-Feb. 1961: pp. 14, 15; Jan.-Feb. 1969: pp. 12, 13

### CLARK, Kenneth S.

Sept.-Oct. 1967: p. 9

### CLARK, Kenneth S. & Philippe Register

Nov. 1959: pp. 8, 12, 13; July-Aug. 1961: p. 23

### CONRON, John P. & David deRyck Lent

May-June 1959: p. 12; Nov.-Dec. 1961: pp. 14-17, 18, 19

### CONRON, John P., David deR. Lent, Robert Plettenberg & Philippe Register

Jan.-Feb. 1963: pp. 13-17

### DEAN & HUNT, Associates

Nov.-Dec. 1978: pp. 7-11; July-Aug. 1979: pp. 10, 11

### DEKKER, Arthur W.

Sept.-Oct. 1961: p. 8

### DICK, Deryl & Don West

July-Aug. 1962: pp. 26, 27

### ELLISON, William

July-Aug. 1973: p. 15

### FERGUSON, Stevens, Mallory & Pearl

May-June 1959: p. 12; Dec. 1959: p. 15; Jan. 1960: pp. 23, 24; Nov.-Dec. 1960: p. 21; Jan.-Feb. 1961: pp. 10, 11; March-April 1962: pp. 11, 12; March-April 1969: p. 12; May-June 1970: pp. 11, 12-15; Nov.-Dec. 1970: p. 13

### FLATOW, Moore, Bryan & Fairburn

May-June 1959: pp. 12, 13, 18, 19, 22; Dec. 1959: p. 14; March-April 1961: pp. 14-16; March-April 1962: pp. 7-9; May-June 1963: pp. 14-19; Sept.-Oct. 1963: p. 19; May-June 1968: p. 16; Nov.-Dec. 1970: p. 12

### FRENCH, Edwin C.

May-June 1964: p. 16

### GATHMAN, Walter

Nov.-Dec. 1960: p. 21; Sept.-Oct. 1963: pp. 8, 9

### GORRELL, Arthur A.

Jan.-Feb. 1965: pp. 23-25

### GRAVES, George R. & Broad & Nelson

Dec. 1959: p. 10

### HALFORD, Richard

Sept.-Oct. 1965: p. 30

### HARRIS, W. T. & Associates

March-April 1964: p. 10

### HARTGER, & Harris

July-Aug. 1971: pp. 17-18

### HEYMAN, Mark

Sept.-Oct. 1961: p. 9

### HOLMES, Jess

Jan.-Feb. 1970: pp. 18, 19; May-June 1970: p. 8

### HOLMES & Giannini

Jan.-Feb. 1978: p. 10

### HOOTEN, Robert

Nov.-Dec. 1963: pp. 17-21

### HOSHOUR, Harvey S.

July-Aug. 1966: pp. 13-15; Nov.-Dec. 1969: p. 7, 10-11; Jan.-Feb. 1978: p. 8; Jan.-Feb. 1979: p. 12

### KIDDER, Bradley P.

April 1959: p. 6

### KIDDER, McHugh & Plettenberg

March-April 1965: pp. 22, 23

### KILLIAN & McBeth

July-Aug. 1979: p. 8

### KRUGER, W. C. & Associates

Sept. 1959: pp. 10, 11; Nov. 1959: p. 8; March-April 1964: pp. 8-11; Nov.-Dec. 1965: pp. 9, 11; May-June 1970: p. 9; Jan.-Feb. 1978: p. 11

### KRUGER, Lake & Henderson

May-June 1964: p. 15

### LUNA-Ross & Associates

July-Aug. 1973: p. 12

### LONG & Waters

Sept.-Oct. 1975: pp. 20, 21

### McHUGH, Hooker & Bradley P. Kidder

May-June 1959: p. 13; Dec. 1959: p. 10; Nov.-Dec. 1961: pp. 5, 6

### McHUGH, Kidder, & Plettenberg

Sept.-Oct. 1965: pp. 12-23; Nov.-Dec. 1967: pp. 13-16; Sept.-Oct. 1968: pp. 15-19; Nov.-Dec. 1970: p. 15

### McHUGH, Kidder, Burran & Wright

March-April 1974: p. 11

### MEEM, John Gaw

Oct. 1959: p. 10

### MEEM, Hollen, Buckley & Associates

Nov. 1959: p. 8

### MERKER, Albert S.

Sept.-Oct. 1967: pp. 15-17

### MERRELL, Robert E.

May-June 1959: p. 6

### MILNER, Richard P.

May-June 1964: p. 17

### NESMITH & Lane & Brittelle, Ginner & Associates

Jan.-Feb. 1961: p. 17

### NOLAN, Charles E., Jr.

May-June 1974: pp. 9-11; Jan.-Feb. 1977: pp. 9-15

### PACHECO, Jess A., Jr.

Nov.-Dec. 1967: p. 9

### PACHECO & Graham

Sept.-Oct. 1968: pp. 9-13; Nov.-Dec. 1968: p. 13; March-April 1969: p. 13; July-Aug. 1973: p. 14; March-April 1977: pp. 15-17

### PLETTENBERG, Robert E.

Nov.-Dec. 1960: pp. 18, 19; Nov.-Dec. 1961: pp. 11, 12; Nov.-Dec. 1964: pp. 17-19

### PREDOCK, Antoine

July-Aug. 1969: pp. 7-12; Nov.-Dec. 1970: p. 14; May-June 1972: pp. 12-16; July-Aug. 1973: p. 13; Nov.-Dec. 1973: pp. 15-19; Jan.-Feb. 1978: p. 9; Jan.-Feb. 1979: p. 11

### REED, John

Nov. 1959: p. 15; May-June 1961: p. 19; Sept.-Oct. 1961: p. 23; May-June 1964: p. 13; July-Aug. 1965: pp. 20, 30; July-Aug. 1966: pp. 17-19; Nov.-Dec. 1967: pp. 17-19; May-June 1968: pp. 11, 14; Nov.-Dec. 1968: p. 10; May-June 1970: p. 10; Nov.-Dec. 1970: p. 12

### REGISTER, Philippe

July-Aug. 1961: p. 23; Sept.-Oct. 1964: p. 11; July-Aug. 1967: p. 7; Sept.-Oct. 1967: p. 14

### REGISTER, Ross & Brunet

March-April 1969: p. 12

### RILEY, Robert

May-June 1968: p. 17

### ROWLAND Associates

Nov.-Dec. 1968: p. 7

### ROWLAND, Hugh

July-Aug. 1960: pp. 20, 21; Sept.-Oct. 1963: pp. 22, 23; July-Aug. 1964: pp. 19-21

### ROWLAND, James N.

Jan.-Feb. 1979: p. 9

### SCHLEGEL, Don P.

Nov. 1959: p. 14; Sept.-Oct. 1961: p. 8; March-April 1963: p. 29; Sept.-Oct. 1963: pp. 12-15

### SHEAR, Anita Carr

May-June 1959: p. 13

### SMITH, Kern

Sept. 1959: p. 8; July-Aug. 1962: p. 19

### STANDHARDT, Frank M. & Associates

Dec. 1959: p. 10

### STANLEY & Wright

March-April 1960: pp. 14, 15; May-June 1961: pp. 8-12

### STEVENS, Mallory, Pearl & Campbell

May-June 1973: pp. 11-15; Sept.-Oct. 1975: pp. 11-19; Jan.-Feb. 1979: p. 12; July-Aug. 1979: pp. 12, 13

### VARSA, John Peter & Wendell & Varsa

May-June 1968: p. 16

### VOLL, Buffington & Nolan

Sept.-Oct. 1964: pp. 20, 21

### VOLL & Nolan

May-June 1969: pp. 14, 15

### VREELAND, Thomas R. & Associates

Jan.-Feb. 1968: pp. 11-15

### WAGGONER & Associates

July-Aug. 1979: p. 9

### WALTERS, Robert

Nov.-Dec. 1961: pp. 22, 23; Jan.-Feb. 1966: pp. 16-19; Sept.-Oct. 1967: pp. 13, 14

### WERTZ, Joseph

May-June 1959: p. 13

### WOLGAMOOD, Millington & Associates

Dec. 1959: p. 11

### Wright, Frank Lloyd

May-June 1959: p. 12

### WRIGHT, George

May-June 1968: p. 15

### WRIGHT & Underwood

March-April 1966: pp. 13-15



## ALPHABETICAL INDEX

### A

**ABIQUIU** Historical buildings in, see **SANTA ROSA DE LIMA DE ABIQUIU**

**AHLBORN, Richard E.**, "The Wooden Walls of Territorial New Mexico" Sept.-Oct. 1967: pp. 20-23

**AIRPORTS**-See **COMMUNITY BUILDINGS**

**ADOBE**-arches, Sept.-Oct. 1961: p. 21. Characteristics of, Sept.-Oct. 1961: pp. 14-21; Jan.-Feb. 1962: pp. 21-26; May-June 1962: p. 21; Sept.-Oct. 1966: p. 15

**ADOBE**-Stabilized, Sept.-Oct. 1961: p. 17. see also **MUD**

**ALBUQUERQUE**-description of in 1906, Jan.-Feb. 1964: p. 25; historical buildings in, Nov.-Dec. 1977: pp. 11-15

**ALBUQUERQUE**-historical buildings in, see **ALVARADO HOTEL**; **CHARLES ILFELD COMPANY WAREHOUSE**; **HUNING CASTLE**, **OCCIDENTAL BUILDING** (old and new); **RAABE HOUSE** (Kelvin-Home); **SAN FELIPE DE NERI CHURCH**

**ALBUQUERQUE**-planning of, March-April 1962: pp. 15-19; March-April 1964: pp. 22-24; May-June 1964: pp. 19-23; July-Aug. 1965: pp. 6, 7 Nov.-Dec. 1965: pp. 13-19; Nov.-Dec. 1977: pp. 11-15

**ALBUQUERQUE-UNIVERSITY OF NEW MEXICO** historical buildings in, see **CHEMISTRY BUILDING**

**ALVARADO HOTEL** (Albuquerque), Jan.-Feb. 1964: pp. 18-25; Nov.-Dec. 1969: pp. 20-23; May-June 1970: pp. 16-19

**AMADOR HOUSE** (Las Cruces) Jan.-Feb. 1962: pp. 21-26

**ANASAZI**, May-June, 1967: pp. 15-21

**ANDREWS, Craig Gray**, Sept.-Oct. 1965: p. 4

**ANTONIADES, Anthony C.**, "Traditional Versus Contemporary Elements in Architecture" Nov.-Dec. 1971: pp. 9-13; Early Modern Architecture in New Mexico" Sept.-Oct. 1973: pp. 13-18; "The Other Las Vegas" July-Aug. 1974: pp. 11-20; "Space in New Mexico Architecture as a Resource for an Energy Ethic" Jan.-Feb. 1976: pp. 10-15

**ARMJO (NESTOR) HOUSE** (Las Cruces), July-Aug. 1972: pp. 11-19

**ARROYO HONDO-MORADA**, Sept.-Oct. 1962: pp. 15-17

### ART IN ARCHITECTURE

**Colbert, Betty**; ceramic planters and lights, Jan.-Feb. 1964: p. 11

**Girard, Alexander**; wood mosaic, July-Aug. 1966

**Goldman, Herbert J.**; Our Lady of the Holy Rosary (Albuquerque), April 1959: pp. 14, 15 *ibid.*; Rio Grande Zoo sculpture, Nov.-Dec. 1962: pp. 16-20

*ibid.*, The Henge, March-April 1964: pp. 14-19

**Graham, Julie**; sculpture for play, May-June 1969: pp. 11-13; July-Aug. 1977: pp. 10-16; Nov.-Dec. 1977: p. 10

**Quasthoff, Donna**; screen, Jan.-Feb. 1964: p. 13

**Smith, Patricia**; Rio Grande Zoo fountain, Nov.-Dec. 1962: p. 19

**Smith, Wilke**; mosaic mural, Jan.-Feb. 1964: p. 13

**Tatschl, John**; stained glass window, May-June 1962: p. 17

**assembly places**-see **COMMUNITY BUILDINGS**

**AZTEC MILL** (Cimarron), Sept.-Oct. 1971: pp. 19-21

### B

**BACA HOUSE** (Las Vegas), Jan. 1960: pp. 14-16

**BACA (SEVERO) HOUSE** (Socorro), July-Aug. 1975: pp. 10, 11

**basketmaker**-see **ANASAZI**

**BAYER, Herbert**, "On Environment" Sept.-Oct. 1962: pp. 7-13

**BERGERE (A.M.) HOUSE** (Santa Fe), July-Aug. 1975: pp. 12-23

**BENSON, Harold R.**, "It's Fun to Shop at Win-rock-an Analysis of a Shopping Center" May-June 1961: pp. 8-12; "Albuquerque, Lineal City" March-April 1962: pp. 15-19; "Sindi Roofscape" May-June 1963: pp. 22-25

**BERGMAN, Edna Heatherington**, "Theoretical Revival of an International Style House" Nov.-Dec. 1976: pp. 15-21; "Louis Hesselden, AIA" July-Aug. 1979: pp. 8, 9

**BERNALILLO COUNTY**-proposed zoning ordinance Nov.-Dec. 1963: pp. 9-13

**billboards**-see **UGLINESS AROUND US**

**BLAKE, Peter**, "Modern Architecture and the Rebuilding of Cities" July-Aug. 1962: pp. 21, 22; "The Professional Press" Nov.-Dec. 1966: pp. 23-25

**BLUMENSCHNEIN, E. L.**, Sept.-Oct. 1976: pp. 10-12

**BOEHNING, A. W., Sr.**, July-Aug. 1962: p. 29

**BOEHNING, Joe**, "Forms in White Stucco" May-June 1969: pp. 19-22; "Arbitration and the Architect" Nov.-Dec. 1970: pp. 9-12

**BOGORD, Craig**, "A Hex Sign for the New Barn" (at Rio Grande Zoo), Nov.-Dec. 1973: p. 14

**BOMB SHELTERS**, Jan.-Feb. 1962: pp. 9, 11

**BOND ISSUES**-and New Mexico Universities, Jan.-Feb. 1974: pp. 11-23

**BORRERO HOUSE** (Santa Fe), Sept.-Oct. 1966: p. 47

**bracket cornice supports** ("bracket style")-see **HUNING CASTLE**

**BRITTELLE, William Miles, Sr.**, March 1959: pp. 6, 14; Jan.-Feb. 1970: pp. 12, 13, 17

**BRITTELLE, William Miles, Jr.**, Nov.-Dec. 1962: p. 27

**BROOKS, H. Allen, Jr.**, "The Old Chemistry Building at the University of New Mexico, its Antecedents and Tradition" July-Aug. 1960: pp. 16-19

**BROWN, Malcolm**, Jan.-Feb. 1964: p. 11

**bultos**-see **SANTOS**

**BUNTING, Bainbridge**, May-June 1968: p. 7. Jan.-Feb. 1970: p. 14; Nov.-Dec. 1978: p. 13, "San Agustin de la Isleta" Sept.-Oct. 1960: pp. 14-16; "Residence of Mabel Dodge Luhan" Sept.-Oct. 1961: pp. 11-13; "New Mexico Conference on Church Architecture" May-June 1962: pp. 13-17; "The Architecture of the Embudo Watershed" May-June 1962: pp. 19-27; "The Penitente Upper Morada-Arroyo Hondo" Sept.-Oct. 1962: pp. 15-17; "Princess Jeanne Revisited-or-Current Folk Art in the Duke City" Sept.-Oct. 1962: pp. 19-23; "The Henge" March-April 1964: pp. 14-19; "An Urban Core for Downtown Albuquerque" March-April 1964: pp. 22-24; "Low-Rise Apartments" July-Aug. 1964: pp. 11-18; "The Architecture of Northern New Mexico" Sept.-Oct. 1966: pp. 14-47; "An Architectural Guide to Northern New Mexico" Sept.-Oct. 1970: pp. 13-50

**BURK, William Emmett, Jr.**, July-Aug.: pp. 13, 18; "The Architect's Role in Protective Construction" Jan.-Feb. 1962: pp. 9, 13

**BYRNE, Francis Barry**, July-Aug. 1960: pp. 16-19

### C

**CAMIEN, Laiten L.**, "The Amador House" Jan.-Feb. 1962: pp. 21-26

**CANALES, Stone**, Jan.-Feb. 1962: pp. 21-26; Sept.-Oct. 1966: p. 19; July-Aug. 1972: p. 18

**Carson House**-See **KIT CARSON HOUSE**

**CASTANEDA HOTEL** (Las Vegas) May-June 1974: pp. 19-24

**CASTILLO, Louis**, "The Stones of Laguna" Jan.-Feb. 1971: pp. 16, 17

**ceiling, cloth covering**-see **MANTA DE TECO**

**CEKOSH, Barbara Jo & David E. Ferro**, "Once an Educational Oasis: Loretto Academy in Santa Fe" July-Aug. 1971: pp. 10-15

**ceramics**-see **ART IN ARCHITECTURE**

**CHARLES ILFELD COMPANY BUILDING** (Las Vegas), March-April 1970: pp. 15-19

**CHARLES ILFELD COMPANY WAREHOUSE** (Albuquerque), Sept.-Oct. 1974: pp. 11-17; March-April 1977: p. 18

**CHEMISTRY BUILDING, UNIVERSITY OF NEW MEXICO** July-Aug. 1960: pp. 16-19

**CHIMAYO**, Sept.-Oct. 1966: p. 35; Sept.-Oct. 1970: pp. 47-49

**CHIMAYO**-historical buildings in, see **EL SANTUARIO DE NUESTRO SEÑOR DE ESQUIPULA**

**Chisum Ranch**-see **LONG HOUSE**

**choir loft**-see **CORO**

**CHURCH ARCHITECTURE**-a conference on, May-June 1962: pp. 13-17

**churches, historical**-listed under name of edifice, e.g. **SAN AGUSTIN DE ISLETA**-also under name of city located in-also in chronological listing

### CHURCHES

**ALBUQUERQUE**-Asbury Methodist Church; Flatow, Moore, Bryan & Fairburn, Architects, Dec. 1959: p. 14

Central Christian Church; Arthur W. Dekker, Architect, Sept.-Oct. 1961: p. 8

Church of the Good Shepherd; Walter Gathman, Architect, Nov.-Dec. 1960: p. 21; Sept.-Oct. 1963: pp. 8, 9

First Unitarian Church; Harvey S. Hoshour, Architect, July-Aug. 1966: pp. 13-15

Holy Rosary Church; Stanley & Wright, Architects, March-April 1960: pp. 14, 15

Indian Assembly of God; Pacheco & Graham, Architects, March-April 1969: p. 13

St. Mark's on the Mesa Episcopal Church; Ferguson, Stevens, Mallory & Pearl, Architects, Dec. 1959: p. 15

**CAMP STONEY**-Plan, Headquarters Building & Bunkhouses; Albert S. Merker, Architect, Sept.-Oct. 1967: pp. 15-17

**CLOVIS**-Kingswood Church; James A. Burran, Architect, Jan.-Feb. 1969: pp. 12, 13

**EAGLE NEST** (vicinity of)-Vietnam Peace & Brotherhood Chapel; Luna-Ross & Associates, Architects, July-Aug. 1973: p. 12

**FORT SUMNER**-St. Anthony Church; George Wright, Associates, Architects, May-June 1968: p. 15

**HONDO VALLEY**-Robert Anderson Private Chapel; Herbert Bayer, Architect, March-April 1965: pp. 15-19; Nov.-Dec. 1969: p. 12

**LOS ALAMOS**-Immaculate Heart of Mary Church; Jesse A. Pacheco, Jr., Architect, Nov.-Dec. 1967: p. 9

United Church; Richard P. Milner, Architect, May-June 1964: p. 17

**SANTA FE**-First Baptist Church; Meem, Holien, Buckley, & Associates, Architects, Nov. 1959: p. 8

A proposed church; Mark Heyman, Architect, Sept.-Oct. 1961: p. 9

**TAOS**-Church of Our Lady of Guadalupe; McHugh & Hooker, Bradley P. Kidder & Associates, Architects, Nov.-Dec. 1961: pp. 5, 6

**TESUQUE** (area of)-Sangre de Cristo Second Novitiate, a Retreat for Christian Brothers; Clark & Register, Architects, July-Aug. 1961: p. 23



**CIMARRON**-historical buildings in, see **AZTEC MILL**

**city planning**-see name of city, e.g. **SANTA FE, PLANNING OF**  
-see also **PLANNING, URBAN**

**civic**-see **GOVERNMENTAL BUILDINGS**

**CLARK, Kenneth Sears**, July-Aug. 1966: p. 20  
"Architectural Registration in New Mexico"  
April 1959: pp. 8, 9

**CLARK, Merle**, "Historic Sites Being Preserved" Jan.-Feb. 1970: pp. 10, 11

**CLAY, Grady**, "Architecture and the Popular Press" Nov.-Dec. 1966: pp. 25-27

**CLAYTON**-historical buildings in, see **OTTO HOUSE**

**cliff dwellings**-see **PREHISTORIC ARCHITECTURE**

**CLIMATE ANALYSIS**, May-June 1975: pp. 11-19

**COLBERT, Betty**, Jan.-Feb. 1964: p. 11

**COLONIAL ART**, conservation of, July-Aug. 1968: p. 9

## COMMERCIAL BUILDINGS

**ALAMOGORDO**-Security Bank & Trust Branch; Voll & Nolan, Architects, May-June 1969: pp. 14, 15

Western Bank; Dean & Hunt Associates, Architects, July-Aug. 1979: pp. 10, 11

**ALBUQUERQUE**-Studio; Robert Walters, Architect, Nov.-Dec. 1961: pp. 22, 23

Albuquerque National Bank, East Central Office; W. C. Kruger Co., Architects, Sept. 1959: pp. 10, 11

Blue Cross Building; Ferguson, Stevens & Associates, Robert G. Mallory & George C. Pearl Associates, Architects, May-June 1959: p. 12; Jan. 1960: p. 24

Offices for Drs. Corcoran, Barkhoff & Stagnone; Joe Boehning, Architect, May-June 1974: pp. 13-17

Fidelity National Bank; Harvey S. Hoshour, Architect, Nov.-Dec. 1969: pp. 10-11

First National Bank, Sandia Plaza Branch; Antoine Predock, Architect, Nov.-Dec. 1973: pp. 15-19

First National Bank, West Central Branch; Antoine Predock, Architect, July-Aug. 1973: p. 13

Galles Motor Co. Building; William E. Burk, Jr., Architect, July-Aug. 1959: p. 12

Grand Avenue Motor Bank; Harvey S. Hoshour, Architect, Jan.-Feb. 1979: p. 12

Mountain States Telephone Co., East Exchange; Ferguson, Stevens, Mallory & Pearl, Architects, March-April 1962: pp. 11, 12

A Multi-Storyed Motel; Flatow, Moore, Bryan & Fairburn, Architects, Sept.-Oct. 1963: p. 19  
Proposed Office Building, Robert G. Biddle, Architect, May-June 1964: p. 18

Public Service Company Building; W. C. Kruger & Associates, Architects, May-June 1970: p. 9  
Public Service Company Office Building; Boehning, Protz & Associates, Architects, May-June 1979: pp. 9-16

Rio Grande Valley Bank; Stevens, Mallory, Pearl & Campbell, Architects, July-Aug. 1979: pp. 12, 13

Simms Building; Flatow, Moore, Bryan & Fairburn, Architects, May-June 1959: p. 13  
Southwest Blood Bank; Boehning & Boehning, Associated, Architects, Sept.-Oct. 1960: pp. 12, 13

Sunset Memorial Mausoleum; Nesmith & Lane and Brittelle, Ginner & Associates, Architects, Jan.-Feb. 1961: p. 17

Toyota Sales & Service; Stevens, Mallory, Pearl & Campbell, Architects, May-June 1973: pp. 11-15

Village Inn Pancake House; W. Miles Brittelle, Jr., Architect, Nov.-Dec. 1962: p. 27

Jim Williams Office Building; Joe Boehning, Architect, Nov.-Dec. 1967: p. 21; May-June 1968: p. 15; Nov.-Dec. 1968: p. 11

Winrock Center Mall; Victor Gruen Associates & Stanley & Wright, Architects, May-June 1961: pp. 8-12

**CARLSBAD**-Office; Kern Smith, Architect, July-Aug. 1962: p. 19

**CLOVIS**-Citizens Bank; James A. Burran, Jr., Architect, Jan.-Feb. 1961: p. 14

**HOBBS**-Broadmore Building; George R. Graves, Architect & Broad & Nelson, Architects, Dec. 1959: p. 10

New Mexico Bank & Trust Co.; Killian & McBeth, Architects, July-Aug. 1979: p. 8

**LOS ALAMOS**-Telephone Exchange; Ferguson, Stevens, Mallory & Pearl, Architects, March-April 1969: p. 12; May-June 1970: pp. 12-15; Nov.-Dec. 1970: p. 13

**PORTALES**-Portales National Bank; Edwin C. French, Architect, May-June 1964: p. 16

**ROSWELL**-First National Bank; Waggoner & Associates, Architects, July-Aug. 1979: p. 9  
Howard L. Smith, M.D., Clinic; Hugh Rowland, Architect, July-Aug. 1960: pp. 20, 21

**SANDOVAL**-The Centerline South; John P. Conron & David deRyck Lent, Architects, Nov.-Dec. 1961: pp. 18, 19

**SANTA FE**-The Centerline, Inc.; John P. Conron & David deRyck Lent, Architects, May-June 1959; Nov.-Dec. 1961: pp. 14-17  
Mangel's Store; Bradley P. Kidder, Architect, April 1959: p. 6

Plaza Luisa; Robert E. Plettenberg, Architect, Nov.-Dec. 1960: pp. 18, 19

**SANTA FE SKI BASIN**-Inn, day lodge and service buildings; John Reed, Architect, May-June 1964: p. 13

**TIJERAS**-Ideal Cement Plant; Ferguson, Stevens, Mallory & Pearl, Architects, Jan.-Feb. 1961: pp. 10, 11

**TUCUMCARI**-Citizens Bank; Robert E. Merrell, Architect, May-June 1959: p. 6

**COMMUNES**, a continuing series from Nov.-Dec. 1971 through March-April 1972

## COMMUNITY BUILDINGS

**ACOMITA**-Acoma, Laguna, Canoncito Indian Health Facility; Stevens, Mallory, Pearl & Campbell, Architects, Jan.-Feb. 1979: p. 12

**ALAMOGORDO**-International Space Hall of Fame; Charles E. Nolan, Jr., Architect, May-June 1974: pp. 9-11; Jan.-Feb. 1977: pp. 9-15

**ALBUQUERQUE**-Hall for Carpenter's Local Union 1319, Ferguson, Stevens, Mallory & Pearl, Architects, Jan. 1960: p. 23

Public Library; Stevens, Mallory, Pearl & Campbell, Architects, Sept.-Oct. 1975: pp. 11-19

Rio Grande Zoo; Nov.-Dec. 1962: pp. 16-19; Nov.-Dec. 1973: pp. 11-14; Jan.-Feb. 1975: pp. 11-15; feline exhibit; Pacheco & Graham, Architects, Sept.-Oct. 1968: pp. 9-13; Nov.-Dec. 1968: p. 13; fountain; Patricia Smith, Sculptor, Nov.-Dec. 1962: p. 19; gibbon flight cage; Long & Waters, Architects, Sept.-Oct. 1975: pp. 20, 21; primate house; Wright & Underwood, Architect-Engineer, March-April 1966: pp. 13-15

Salvation Army Citadel; Brittelle, Ginner & Associates, Architects, Dec. 1959: p. 11

San Pedro Branch Library; John Reed, Architect, Nov.-Dec. 1967: pp. 17-19; May-June 1968: p. 11; Nov.-Dec. 1970: p. 12

South Valley Neighborhood Center; Harvey S. Hoshour, Architect, Nov.-Dec. 1969: p. 7

Wilson Park Swimming Pool; Jess Holmes, Architect, Jan.-Feb. 1970: pp. 18, 19; May-June 1970: p. 8

**ARTESIA**-Public Library; James A. Burran, Jr., Architect, Jan.-Feb. 1961: p. 15

**COLORADO SPRINGS**-Fine Arts Center; John Gaw Meem, Architect, Oct. 1959: p. 10

**DULCE**-Jicarilla Apache Community Building; Ferguson, Stevens, Mallory & Pearl, Architects, Nov.-Dec. 1960: p. 21

**FORT SELDEN STATE MONUMENT**-A Small Museum; Pacheco & Graham, Architects, March-April 1977: pp. 15-17

**HOBBS**-Public Library; Hartger & Harris, Architects, July-Aug. 1971: pp. 16-18

**JAL**-Woolworth Community Library; Dean & Hunt Associates, Architects, Nov.-Dec. 1978: pp. 7-11

**LAGUNA PUEBLO**-Community Building; Ferguson, Stevens & Associates & Robert G. Mallory & George C. Pearl Associates, Architects, Jan. 1960: p. 24

**LOS ALAMOS**-A Family YMCA Building; Kidder, McHugh, Plettenberg, Architects, March-April 1965: pp. 22, 23

**SANTA FE**-Santa Fe Opera; McHugh, Hooker & Bradley P. Kidder, Architects, May-June 1959: p. 13; Dec. 1959: p. 10

Santa Fe Opera, rebuilding of; McHugh, Kidder & Plettenberg, Architects, Sept.-Oct. 1965: pp. 17-23; Nov.-Dec. 1967: pp. 13-16; Sept.-Oct. 1968: pp. 15-19; Nov.-Dec. 1970: p. 15  
Woman's Club & Library Association; Architects Associated, March-April 1963: p. 29

**SOCORRO**-General Hospital; Robert E. Merrell, Architect, May-June 1959: p. 6

**concert hall**-see **COMMUNITY BUILDINGS**

Conron, John Phelan, March-April 1962: p. 5;  
"An Architectural Control Ordinance for Santa Fe? No!" Nov.-Dec. 1960: pp. 12, 15, 16  
"Architectural Conservation" May-June 1962: pp. 9, 10; "The Architecture of Northern New Mexico" Sept.-Oct. 1966: pp. 14-47; "Through a Hole in the Curtain—a Trip to the U.S.S.R." Sept.-Oct. 1969: pp. 12-23; "The Polish Experience" May, June, July, Aug. 1976: pp. 11-57; "Old and New Architecture... Design Relationship" May-June 1978: pp. 10-14

**CONTEMPORARY ARCHITECTURE IN NEW MEXICO** May-June 1959: pp. 11-14; Sept.-Oct. 1973: pp. 13-18; Nov.-Dec. 1976: pp. 15-21

**Cordova Mill**, see **LAUREANO CORDOVA MILL**

**CORO**, Sept.-Oct. 1960: p. 15

**CRISTO REY CHURCH (Santa Fe)**, Oct. 1959: p. 10

**CURRY HOUSE (Santa Fe)**, Jan.-Feb. 1969: pp. 14-19

## D

**DEFENSE ARCHITECTURE**, May-June 1962: pp. 19, 21; Sept.-Oct. 1966: pp. 16, 17, 35; March-April 1979: p. 11—see also **TORREON**

Dewitt, Susan, "New and Old—a City Mix" Nov.-Dec. 1977: pp. 11-15

**DOLAN HOUSE (Lincoln)**, July-Aug. 1969: pp. 17-20

Dominguez, Fray Francesco Atanasio, "Description of a New Mexican Church in 1776" May-June 1965: pp. 19-21

**DORSEY MANSION (Colfax County)**, Jan.-Feb. 1970: pp. 10, 11; Nov.-Dec. 1972: pp. 12-23

Duran, Mark, "Californication Comes to New Mexico" Jan.-Feb. 1973: pp. 14, 15

## E

Eckbo, Garrett, "People in Landscape Space" Nov.-Dec. 1966: pp. 16, 17

Elmslie, George Grant, Oct. 1959: pp. 12, 13

**EL NAVAJO HOTEL (Gallup)**, July-Aug. 1962: pp. 15, 16

**EL ORTIZ HOTEL (Lamy)**, July-Aug. 1962: pp. 13, 16

**EL SANTUARIO DE NUESTRO SEÑOR DE ESQUIPULA (Chimayo)**, Sept.-Oct. 1966: p. 35; Sept.-Oct. 1970: p. 49

**EL TORREON (Socorro)**, Jan.-Feb. 1963: pp. 20-25

**EL ZAGUAN (Santa Fe)**, pp. 14-16; p. 47



**EMBUDO WATERSHED ARCHITECTURE**, May-June 1962: pp. 19-27

**ENERGY**—conservation of in architecture, Jan.-Feb. 1976: pp. 10-15; May-June 1978: pp. 9, 15, 16—see also **SOLAR ENERGY**

**ENVIRONMENT**, pp. 9-13; pp. 11-15

**Euston, Andrew F., Jr.**, "People in Urban Space" Nov.-Dec. 1966: pp. 15, 16

**Ewing, Curtiss**, "Function Follows Freud" March-April 1963: pp. 18-21; "Communes and the American Society" continuing series from Nov.-Dec. 1971 through March-April 1972

## F

**fallout shelters**—see **BOMB SHELTERS**

**Ferro, David E. & Barbara Jo Cekosh**, "Once an Educational Oasis: Loretto Academy in Santa Fe" July-Aug. 1971: pp. 10-15

**FIREPLACES, ADOBE**, Sept.-Oct. 1961: pp. 14-19; Jan.-Feb. 1964: p. 11; Sept.-Oct. 1966: pp. 20, 21

**Fitch, James Marston**, "Cosmetic Aspects of Historic Preservation" Sept.-Oct. 1977: pp. 9, 17-19

ibid. Nov.-Dec. 1977: pp. 16-18

**Flatow, Max**, March-April 1962: p. 5, 12

**FORT MARCY (Santa Fe)**, July-Aug. 1975: pp. 12-23—officers residences, see **BERGERE HOUSE** and **HEWETT HOUSE**

**FRANCE**, "The Summer of '76" by Philippe Register, March-April 1978: pp. 11-15

**Fred Harvey Houses**—see **ALVARADO HOTEL** (Albuquerque); **CASTANEDA HOTEL** (Las Vegas); **EL ORTIZ HOTEL** (Lamy); **EL NAVAJO HOTEL** (Gallup); **LAS CHAVEZ HOTEL** (Vaughn)

## G

**Gallegos, Alejandrino**, Sept.-Oct. 1966: pp. 21, 22

**Gallegos house**—see **PADRE GALLEGOS HOUSE**

**Gallup**—historical buildings in, see **EL NAVAJO HOTEL**

**GAY-WAGNER HOUSE (Santa Fe)**, July-Aug. 1978: pp. 10-14

**Gebhard, David**, Oct. 1959: p. 14; "Architecture in New Mexico: Discussion and Analysis" May-June 1959: pp. 11-14; "Purcell and Elmslie, Pioneers in Architecture" Oct. 1959: pp. 12, 13; "Notes of an American in Europe" Jan.-Feb. 1961: pp. 12, 13; "Architecture and the Fred Harvey Houses" July-Aug. 1962: pp. 11-17; ibid. Jan.-Feb. 1964: pp. 18-25; "R. M. Schindler in New Mexico—1915" Jan.-Feb. 1965: pp. 15-21; "The New Mexico State Capitol" Nov.-Dec. 1965: pp. 9, 11; "American Industrial Design—1890-1969" Nov.-Dec. 1969: pp. 16-19

**Gilbert, Bartlett**, "El Torreón—Socorro, New Mexico" Jan.-Feb. 1963: pp. 20-25

**Ginn, Ronn**, "The Roswell Central Business District" May-June 1965: pp. 9-15

**Girard, Alexander**, July-Aug. 1966: pp. 13-15

**Goldman, Herbert J.**, April 1959: pp. 14, 15; Nov.-Dec. 1962: pp. 16-20; March-April 1964: pp. 14-19

## GOVERNMENTAL BUILDINGS

**CARRIZOZO**—Lincoln County Court House; Voll, Buffinton & Nolan, Architects, Sept.-Oct. 1964: pp. 20, 21

**LOS ALAMOS**—County Courthouse; Flatow, Moore, Bryan & Fairburn, Architects, May-June 1968: p. 16

**PORTALES**—Roosevelt County Court House; Robert E. Merrell, Architect, May-June 1959: p. 6

**ROSWELL**—General Hospital, Holloman Air Force Base; Kenneth S. Clark, Architect, Sept.-Oct. 1967: p. 9

Theater, Holloman Air Force Base; Kenneth S. Clark, Architect, Sept.-Oct. 1967: p. 9

**SANTA FE**—A New Capitol for New Mexico (proposed); John P. Conron, David deR. Lent, Robert Plettenberg & Philippe Register, Architects, Jan.-Feb. 1963: pp. 13-17

New Mexico Law Enforcement Complex; Register, Ross & Brunet, Architects, March-April 1969: p. 12

New Mexico State Capitol; W. C. Kruger & Associates, Architects, March-April 1964: pp. 8-11; Nov.-Dec. 1965: pp. 9, 11

New Mexico State Land Office; W. C. Kruger & Associates, Architects, Nov. 1959: p. 8

**TAOS**—County Courthouse; The Architects, Architects, May-June 1971: pp. 11-17; Jan.-Feb. 1972: p. 12

Peace Corps Training Center: Don Schlegel, Architect, March-April 1963: p. 29

**Graham, Channell**, "The Rio Grande Zoological Park... A Continual Transition" Nov.-Dec. 1973: pp. 11-14

**Graham, Julie**, May-June 1969: pp. 11-13; July-Aug. 1977: pp. 10-16; Nov.-Dec. 1977: p. 10

**Griffin, Walter Burley**, July-Aug. 1960: pp. 16-19

**Groening, Karen**, "Land Development in New Mexico—Is Legislation Necessary?" Jan.-Feb. 1971: pp. 13-15

## H

**Halford, Richard**, Sept. 1959: p. 16

**Hall, Charles L.**, "Architecture of the Anasazi Pueblo Culture" May-June 1967: pp. 15-21

**Hall, Harriett**, "Old Occidental Building" Nov.-Dec. 1977: p. 3

**Harris, Wilbur Thomas**, March-April 1962: p. 5

**Harvey Houses**—see **ALVARADO HOTEL** (Albuquerque); **CASTANEDA HOTEL** (Las Vegas); **EL ORTIZ HOTEL** (Lamy); **EL NAVAJO HOTEL** (Gallup); **LAS CHAVEZ HOTEL** (Vaughn)

**Heimerich, John James**, March-April 1962: p. 5; May-June 1972: p. 9; and Don P. Schlegel, "Division of Architecture—University of New Mexico" May-June 1960: pp. 15-21

**Hesselden, Louis**, July-Aug. 1978: pp. 8, 9

**HEWETT (EDGAR LEE) HOUSE (Santa Fe)**, July-Aug. 1975: pp. 12-23; Nov.-Dec. 1975: pp. 3, 9, 20, 21

**Heyman, Mark**, "The Last Days of the Nussbaum House?" Sept.-Oct. 1960: 18-20, 22, 23 Nov.-Dec. 1960: p. 11

**Hill, John Jay**, Sept.-Oct. 1965: p. 4

**HISTORICAL ARCHITECTURE**—preservation of, May-June 1962: pp. 9, 10; Jan.-Feb. 1969: pp. 14-19; Jan.-Feb. 1970: pp. 10, 11; Sept.-Oct. 1971: p. 13; Sept.-Oct. 1977: pp. 9-19; Nov.-Dec. 1977: pp. 11-18

**Hooker, Van Dorn**, "The Bond Issue and the Growth of New Mexico Universities" Jan.-Feb. 1974: pp. 11-23; "To Hand Plaster or Not?" Sept.-Oct. 1977: pp. 11-16

**HUNING CASTLE**, March-April 1960: pp. 16-19

**Hunter James**, "Personal Communications" Nov.-Dec. 1966: pp. 27, 28

**Hyatt, Foster Highlands**, March-April 1962: p. 5

## I

**Ilfeld**—see **CHARLES ILFELD**

**INSURANCE**

Architect's liability, Jan.-Feb. 1962: pp. 13, 14

AIA documents, May-June 1967: pp. 13, 14

**ISLETA PUEBLO-MISSION CHURCH OF SAN AGUSTIN**, Sept.-Oct. 1960: pp. 14-16

**Ivers, Louise Harris**, "The Pride of Las Vegas, New Mexico" (Charles Ilfeld Co. Bldg.)

March-April 1970: pp. 15-19; "The Masonic Temple in Las Vegas, N.M.," March-April 1976: pp. 15-19; "The Montezuma Hotel," May-June 1977: pp. 13-25

## J

**JACAL**, May-June 1967: p. 17; Sept.-Oct. 1967: pp. 20-23

**Jackson, John Brinkerhoff**, July-Aug. 1977: p. 9

"Nacimietos in Santa Fe", Jan.-Feb. 1962: p. 15; "The Ugliness Around Us", July-Aug. 1963: pp. 15, 16; "The Strip! What Is It?" March-April 1966: pp. 17-21; "Regionalism and the Mountain West", Nov.-Dec. 1966: pp. 9-11

**Kelly, Daniel T., Jr.**, "Architects Professional Liability Insurance" Jan.-Feb. 1962: pp. 13, 14

**Kelvin Home**—see **RAABE HOUSE**

**Kidder, Bradley Paige**, April 1959: pp. 7, 10; March-April 1973: pp. 10, 11

**Kimbro, Harriet**, "An Artist Looks at Architecture" Sept.-Oct. 1976: pp. 10-12

**KIT CARSON HOUSE (Taos)**, Jan.-Feb. 1977: p. 7

## L

**LaFarge, Oliver**, Jan.-Feb. 1962: p. 5

**LA FONDA HOTEL (Santa Fe)**, Jan.-Feb. 1964: pp. 18-25; Sept.-Oct. 1966: p. 47; Sept.-Oct. 1970: p. 15

**LAGUNA PUEBLO**, Jan.-Feb. 1971: pp. 16, 17

**LAMY**—historical buildings in, see **EL ORTIZ HOTEL**

**land use planning**—see **PLANNING, LAND USE**

**LAS CHAVEZ HOTEL (Vaughn)**, July-Aug. 1962: pp. 11, 16, 17

**LAS CRUCES**—historical buildings in, see **AMADOR HOUSE**; **ARMJO HOUSE**

**LAS TRAMPAS**, Sept.-Oct. 1966: pp. 27-31; July-Aug. 1967: p. 9

**Las Trampas Mission Church**—see **SAN JOSE DE GRACIA MISSION**

**LAS VEGAS**—historical buildings in, see **BACA HOUSE**; **CASTANEDA HOTEL**; **CHARLES ILFELD COMPANY BUILDING**; **MASONIC TEMPLE**; **MONTEZUMA HOTEL**

**LAS VEGAS**—planning of, July-Aug. 1974: pp. 11-20

**LATIA**, Sept.-Oct. 1960: p. 15; Sept.-Oct. 1966: p. 19

**LAUREANO CORDOVA MILL (Vadito)**, May-June 1962: p. 25; Sept.-Oct. 1971: pp. 21, 26

**LINCOLN**—historical buildings in, see **DOLAN HOUSE**

**LOBATO (ROQUE) HOUSE (Santa Fe)**, Sept.-Oct. 1966: p. 45

**LONG HOUSE, CHISUM RANCH**, March-April 1961: p. 23

**LORETTO ACADEMY & CHAPEL (Santa Fe)**, Sept.-Oct. 1966: p. 43; July-Aug. 1968: p. 7; Sept.-Oct. 1970: p. 17; July-Aug. 1971: pp. 10-15

**Lufkin, Agnesa**, "The Gay-Wagner House: Hand-Made Space" July-Aug. 1978: pp. 10-14; "The Old Otto House" Sept.-Oct. 1979: pp. 9-12

**LUHAN (MABLE DODGE) HOUSE (Taos)**, Sept.-Oct. 1961: pp. 11-13; Sept.-Oct. 1970: p. 30

## M

**Mable Dodge Luhan**—see **LUHAN, MABLE DODGE**

**MANTA DE TECHO**, Sept.-Oct. 1966: p. 19

**MARTINEZ (DON ANTONIO SEVERINO) HOUSE (Taos)**, Sept.-Oct. 1970: pp. 32, 33; Jan.-Feb. 1977: p. 7



**MASONIC TEMPLE (Las Vegas),** March-April 1976: pp. 15-19

**Maxwell, A. E.,** "Ehrlicke Space Garden" Jan.-Feb. 1975: pp. 16-19

**Meem, John Gaw** Oct. 1959: pp. 10, 11, 25, 27, 29; Sept.-Oct. 1976: pp. 10-12; "A Contemporary Regional Style Based on the Traditional" March-April 1972: pp. 8, 9

**meeting places—see** COMMUNITY BUILDINGS

**Merker, Albert Seewald,** Sept.-Oct. 1965: p. 4

**Merrell, Robert E.,** May-June 1959: pp. 7, 20

**metal paneling—see** STAMPED METAL PANELING

**mica—see** SELENITE

**Midyette, John T., III,** "A Look at the DeVargas Urban Renewal Project" Jan.-Feb. 1968: pp. 17-19

**Milford, Vivian Grelick,** "New Play Environments" July-Aug. 1977: pp. 10-16

**MILLS, GRIST,** May-June 1962: p. 25; Sept.-Oct. 1966: p. 29; Sept.-Oct. 1971: pp. 19-21, 26

**MISSIONS—**listed under name, e.g. SAN JOSE DE GRACIA MISSION; also listed under name of location and in chronological listing of historical buildings

**MONTEZUMA HOTEL (Las Vegas),** May-June 1977: pp. 13-25

**MORADA,** May-June 1962: p. 21; Sept.-Oct. 1962: pp. 15-17; Sept.-Oct. 1966: pp. 25, 26; Sept.-Oct. 1972: pp. 13-19

**mosaics—see** ART IN ARCHITECTURE

**MUD-plaster,** Sept.-Oct. 1966: p. 20; puddled, May-June 1962: p. 19; Sept.-Oct. 1966: p. 18 March-April 1979: p. 11

**Mudd, Harvey, II,** "New Mexico's Air and Water—the endangered essentials" July-Aug. 1970: pp. 9-13; "Environmental Legislation in the 1971 Legislative Session" Jan.-Feb. 1971: pp. 11-13

**Mumford, Lewis,** "Conversations in Santa Fe" Nov.-Dec. 1962 through May-June 1963

**municipal—see** GOVERNMENTAL

**Munroe, Kevin S.,** "Saving the Ilfeld Warehouse in Albuquerque" Sept.-Oct. 1974: pp. 11-16

**Murray, James, III,** "James Murray III, AIA, Brings Korean Family to U. S." March-April 1974: pp. 17-21

**MUSEUM OF FINE ARTS (Santa Fe),** Sept.-Oct. 1970: p. 15

**muslin ceilings—see** MANTA DE TECO

**MacGregor, John,** "Report on the Conference on Architecture and the Allied Arts" Jan.-Feb. 1964: pp. 9-15; "Architects and Communications" Nov.-Dec. 1966: pp. 29, 30

**McHenry, P. G., Jr.,** "Pre-Spanish Pueblo Towns" March-April 1979: pp. 10-14

**McHugh, John Wells,** March-April 1962: p. 5; "Notes on an Architectural Study Trip" July-Aug. 1960: pp. 15, 22; "Church of Our Lady of Guadalupe—Taos" Nov.-Dec. 1961: pp. 5, 6; "Old Santa Fe—and What to Do About It" Jan.-Feb. 1970: pp. 15-17; "Ability, Relevance and Licensing or, What Am I Doing Here?" March-April 1971: pp. 13, 14

**McKee, John DeWitt & Spencer Wilson,** "Leave the Back of the Garage and Turn Left" Nov.-Dec. 1975: pp. 11-19; *ibid.* March-April 1977: pp. 8, 9

## N

**Nestor Armijo House—see** ARMIJO HOUSE

**New Mexico Museum of Fine Arts—see** MUSEUM OF FINE ARTS

**New York World's Fair—see** WORLD'S FAIR

**Nichols, John,** "A Layman's Impression" (of Taos County Courthouse), May-June 1971: pp. 15, 17

**NORTHERN NEW MEXICO—**architectural guide to, Sept.-Oct. 1970: pp. 13-50

**NUSBAUM HOUSE (Santa Fe),** Sept.-Oct. 1960: pp. 18-23; Nov.-Dec. 1960: p. 11

## O

**OCCIDENTAL BUILDING, OLD (Albuquerque),** Nov.-Dec. 1977: p. 3; March-April 1978: p. 10

**OCCIDENTAL BUILDING, NEW (Albuquerque),** March-April 1978: pp. 8, 9

**OCTAGON HOUSE (Washington, D. C.),** July-Aug. 1967: pp. 10, 11

**opera—see** COMMUNITY BUILDINGS

**ORTIZ HOUSES (Santa Fe),** Jan.-Feb. 1969: p. 19

**Otero, Katherine Stinson,** July-Aug. 1978: pp. 10-14

**OTTO HOUSE (Clayton),** Sept.-Oct. 1979: pp. 9-12

## P

**PADRE GALLEGOS HOUSE (Santa Fe),** July-Aug. 1966: pp. 5, 7; Sept.-Oct. 1966: p. 45; Sept.-Oct. 1970: p. 16

**PALACE OF THE GOVERNORS (Santa Fe),** Sept.-Oct. 1966: p. 41; Sept.-Oct. 1970: p. 15

**Pearl, George Clayton,** "Specialization in Architecture—a Discussion" March 1959: pp. 3, 11, 12; "Philosophy and Buildings" Jan. 1960: pp. 20-25; "Commodity Firmness and Mud—some personal observations on building with adobe" Sept.-Oct. 1961: pp. 14-21

**penitente chapel—see** MORADA

**PERU,** "Lima, Peru... a Townscape for Pedestrians and Sidewalk Cafe Lovers" by Albert Solnit, Sept.-Oct. 1964: pp. 13-15

**Peters, Robert W.,** "An Architect's Impression" (of Taos County Courthouse), May-June 1971: pp. 13-15

**PICURIS PUEBLO,** Sept.-Oct. 1966: p. 33

**pit houses—see** PREHISTORIC ARCHITECTURE

**PLANNING-city,** see name of city involved, e.g. SANTA FE, planning of; land use, Jan.-Feb. 1971: pp. 13-15; Jan.-Feb. 1973: pp. 14, 15; urban, May-June 1964: pp. 19-23; July-Aug. 1965: pp. 10-17; March-April 1966: pp. 17-21; Nov.-Dec. 1977: pp. 11-15

**play structures—see** SCULPTURE IN

**Plettenberg, Robert Erwin,** "...and the Front Yard Is in Back" July-Aug. 1961: pp. 14-16; "Apogee of Santa Fe" March-April 1964: p. 7

**Poglayen, Ivo,** "The Zoo in Society" Nov.-Dec. 1962: p. 21

**POLAND,** "The Polish Experience" by John P. Conron, May, June, July, Aug. 1976: pp. 11-57

**pollution—see** ENVIRONMENT

**Popejoy, Tom. L.,** July-Aug. 1968: p. 11

**PREHISTORIC ARCHITECTURE,** May-June 1967: pp. 15-21; Jan.-Feb. 1976: pp. 10-15; preservation of, Jan.-Feb. 1969: p. 11

**Preiser, Wolfgang F. E.,** "Examples of Innovations and Applications of Behavioral Science in Architecture and Environmental Design" Nov.-Dec. 1979: pp. 13-16

**Prince, Harry M.,** "Responsibility of Architect to Owner" July-Aug. 1961: pp. 7, 8

**public buildings—see** COMMUNITY BUILDINGS

**PUEBLO ARCHITECTURE,** May-June 1967: pp. 15-21; Nov.-Dec. 1971: pp. 9-13; Jan.-Feb. 1976: pp. 10-15; March-April 1979: pp. 10-14

**Purcell, William Gray,** Oct. 1959: pp. 12, 13

**Purdy, James H.,** "The Fort Marcy Officer's Residence—a Case for Restoration" July-Aug. 1975: pp. 12-23

## Q

**QUARRY STONE,** Jan.-Feb. 1971: pp. 16, 17

**Quasthoff, Donna,** Jan.-Feb. 1964: p. 13

**Quinlan, Charles William,** "The Second Year Architectural Student" July-Aug. 1961: pp. 19-21; "El Torreon—Socorro, New Mexico" Jan.-Feb. 1963: pp. 20-25

## R

**RAABE HOUSE (Albuquerque),** Nov.-Dec. 1976: pp. 15-21

**Raiser, William,** "People in Interior Space" Nov.-Dec. 1966: pp. 18, 19

**RANCHOS DE TAOS, MISSION CHURCH OF ST. FRANCIS OF ASSISI,** Dec. 1959: pp. 12, 13 Sept.-Oct. 1963: p. 21; Sept.-Oct. 1970: p. 27; Sept.-Oct. 1977: pp. 11-16

**Rapp & Rapp, Architects,** March-April 1976: pp. 15-19

**Reed, John Benjamin, Jr.,** July-Aug. 1959: p. 15 "Random Thoughts Concerning the Practice of Architecture in New Mexico" Nov.-Dec. 1962: pp. 23, 24; "Structural Considerations of Design" July-Aug. 1964: p. 7

**Register, Philippe deMontauzan,** July-Aug. 1959: p. 6; March-April 1962: p. 5; "What Regional Architecture Means to Me" July-Aug. 1960: pp. 10, 13; "The Summer of '76" March-April 1978: pp. 11-15

**RESIDENTIAL BUILDINGS**

**ALBUQUERQUE—**An Apartment Group; John B. Reed, Architect, May-June 1961: p. 19; July-Aug. 1966: pp. 17-19

**Robert Bowers House:** John Peter Varsa, Wendell & Varsa, Architects, May-June 1968: p. 16

**Henry M. Bremer House (remodeled):** Boehning & Boehning Architects, Nov.-Dec. 1961: p. 21

**George Chant House:** Antoine Predock, Architect, Jan.-Feb. 1979: p. 11

**Horizon Homes Competition House:** John B. Reed, Architect, Sept.-Oct. 1961: p. 23

**La Luz Community:** Antoine Predock, Architect, July-Aug. 1969: pp. 7-12; Nov.-Dec. 1970: p. 14

**Carl Paak House:** Hildreth Barker, Architect, May-June 1968: p. 13

**Predock House:** Antoine Predock, Architect, May-June 1972: pp. 12-16

**Project House for Sun-Bar Construction Co.,** John Reed, Architect, Nov. 1959: p. 15

**Robert Riley House:** Robert Riley, Architect, May-June 1968: p. 17

**John D. Robb House:** Don P. Schlegel, Architect, Sept.-Oct. 1961: p. 8; Sept.-Oct. 1963: pp. 12-15

**Stewart Rose House:** Flatow, Moore, Bryan & Fairburn, Architects, May-June 1959: p. 12

**J. L. Rust Garden:** Robert Hooten, Designer, Nov.-Dec. 1963: pp. 17-21

**Don P. Schlegel House:** Don P. Schlegel, Architect, Nov. 1959: p. 14

**Anita Carr Shear House:** Anita Carr Shear, Designer, May-June 1959: p. 13

**Solar House:** Antoine Predock, Architect, Jan.-Feb. 1978: p. 9

**CARLSBAD—**H. B. Aycock House; Arthur A. Gorrell, Architect, Jan.-Feb. 1965: pp. 23-25

**ESPANOLA—**An Apartment Complex; Richard Halford, Architect, Sept.-Oct. 1965: p. 30

**HONDO VALLEY—**Circle Diamond Ranch Private Chapel; Herbert Bayer, Architect, March-April 1965: pp. 15-19

**PECOS—**Arnold Friedman House; Frank Lloyd Wright, Architect, May-June 1959: p. 12

**ROSWELL—**Hilltop House Apartments; Hugh Rowland, Architect, July-Aug. 1964: pp. 19-21

**Menckne Ranch, Inc.:** Frank M. Standhardt & Associates, Architects, Dec. 1959: p. 10

**Howard L. Smith House:** Hugh Rowland, Architect, Sept.-Oct. 1963: pp. 22, 23

**SANTA FE—**Congregate Home & Retirement Residences for the Presbyterian Church;



Kenneth S. Clark & Philippe Register, Architects, Nov. 1959: p. 8

Payne Harris Pool Enclosure; Robert E. Plettenberg, Architect, Nov.-Dec. 1964: pp. 17-19

Gavin House; McHugh, Kidder, Burran & Wright, Architects, March-April 1974: p. 11

William Gill House; Kenneth S. Clark & Philippe Register, Architects, Nov. 1959: pp. 12, 13

Kidder House; Bradley P. Kidder, Architect, April 1959: p. 6

Julia P. Meardon House; Robert E. Plettenberg, Architect, Nov.-Dec. 1961: pp. 11, 12

Paul Rutledge House; Joseph Wertz, Designer, May-June 1959: p. 13

**TAOS SKI VALLEY**—Sierra del Sol Condominiums; Thomas R. Vreeland & Associates, Architects, Jan.-Feb. 1968: pp. 11-15

**TIJERAS CANYON**—Fred Sharp Lieb House; Deryl Dick & Don West, Designers, July-Aug. 1962: pp. 26, 27

**retablos**—see **SANTOS**

**Rockrise, George**, "People in Architectural Space" Nov.-Dec. 1966: pp. 17, 18

**Rodgers, Sally**, "Land Subdivision Legislation" Jan.-Feb. 1973: p. 15

**RODRIGUEZ (JUAN) HOUSE (Santa Fe)**, Sept.-Oct. 1966: p. 45

**ROOFS**—mansard, July-Aug. 1971: p. 13; pitched tin or iron, May-June 1962: pp. 19-27; Sept.-Oct. 1966: p. 22; see also **SAN FELIPE DE NERI CHURCH**; see also **PADRE GALLEGOS HOUSE**; slate, July-Aug. 1971: p. 13

**ROSARIO CHAPEL (Santa Fe)**, Sept.-Oct. 1966: p. 45

**ROSWELL**—historical buildings in, see **LONG HOUSE, CHISUM RANCH**; planning of, May-June 1965: pp. 9-15

**RUSSIA**, "Through a Hole in the Curtain" by John P. Conron, Sept.-Oct. 1969: pp. 12-23

**S**

**SAINT FRANCIS CATHEDRAL (Santa Fe)**, Sept.-Oct. 1966: p. 43; Sept.-Oct. 1970: p. 17

**SAINT FRANCIS OF ASSISI MISSION CHURCH (Ranchos de Taos)**, Dec. 1959: pp. 12, 13; Sept.-Oct. 1963: p. 21; Sept.-Oct. 1970: p. 27; Sept.-Oct. 1977: pp. 11-16

**Salazar, J. Richard**, "Santa Rosa de Lima de Abiquiú" Sept.-Oct. 1976: pp. 13-19

**Samuelson, Susan**, "Thieves Ravage New Mexico's Heritage" Sept.-Oct. 1972: pp. 13-19

**SAN AGUSTIN MISSION CHURCH (Isleta Pueblo)**, Sept.-Oct. 1960: pp. 14-16

**SAN FELIPE DE NERI CHURCH (Albuquerque)**, May-June 1966: pp. 8-17

**SAN JOSE DE GRACIA MISSION CHURCH (Trampas)**, May-June 1962: p. 21; May-June 1965: pp. 19-21; Sept.-Oct. 1966: pp. 30, 31; Sept.-Oct. 1967: pp. 9, 11; Nov.-Dec. 1969: p. 13; Sept.-Oct. 1970: pp. 38-44; July-Aug. 1977: pp. 9, 17

**SAN MIGUEL CHAPEL (Santa Fe)**, Sept.-Oct. 1966: pp. 41, 42; Sept.-Oct. 1970: p. 19; Sept.-Oct. 1972: pp. 14, 15

**SAN MIGUEL CHURCH (Socorro)**, Nov.-Dec. 1974: pp. 12-17

**SANTA FE**—architectural guide to, Sept.-Oct. 1970: pp. 13-20; history of, Sept.-Oct. 1966: p. 39; planning of, Nov.-Dec. 1962—May-June 1963 (a continuing series); March-April 1964: pp. 7-11; March-April 1965: pp. 9-12; Nov.-Dec. 1965: pp. 9, 11; Jan.-Feb. 1968: pp. 17-19; Jan.-Feb. 1970: pp. 15-17; survey of building styles in, Sept.-Oct. 1978: pp. 12-35

**SANTA FE**—historical buildings in, see **BERGERE HOUSE**; **BORREGO HOUSE**; **CRISTO REY CHURCH**; **CURRY HOUSE**; **EL ZAGUAN**; **GAY-WAGNER HOUSE**; **HEWETT HOUSE**; **LA FONDA**; **LOBATO HOUSE**; **LORETTO ACADEMY & CHAPEL**; **MUSEUM OF FINE ARTS**; **NUSBAUM HOUSE**; **ORTIZ HOUSES**;

**PADRE GALLEGOS HOUSE**; **PALACE OF THE GOVERNORS**; **RODRIGUEZ HOUSE**; **ROSARIO CHAPEL**; **ST. FRANCIS CATHEDRAL**; **SAN MIGUEL CHAPEL**; **SENA PLAZA**; **TULLY HOUSE**; **VIGIL HOUSE**

**SANTA FE STYLE ORDINANCE**, Nov.-Dec. 1960: pp. 12-16; Jan.-Feb. 1963: pp. 5-7; May-June 1963: pp. 7-9; Sept.-Oct. 1970: p. 13; May-June 1978: pp. 10-14

**SANTA ROSA DE LIMA DE ABIQUIU**, Sept.-Oct. 1976: pp. 13-19

**SANTOS**, Sept.-Oct. 1972: pp. 13-19

**Santuario, Chimayo**—see **EL SANTUARIO DE NUESTRO SEÑOR DE ESQUIPULA**

**Schindler, R. M.**, Jan.-Feb. 1965: pp. 15-21

**Schlegel, Don Paul**, March-April 1962: p. 5; July-Aug. 1968: p. 7; May-June 1969: p. 7; "Report from the University, Architectural Education" a continuing series from March 1959 through January 1960; "A Point of View" March-April 1960: pp. 12, 13, 22; "Division of Architecture—University of New Mexico" May-June 1960: pp. 15-21; "Trends in Modern Architecture" March-April 1961: pp. 18-21; "Long Range Campus Planning, the University of New Mexico's North Campus" March-April 1967: pp. 17-21

**SCHOOL**—proposed building code, Nov.-Dec. 1963: pp. 7-9

**SCHOOLS**

**ALBUQUERQUE**—Acoma Elementary School; Flatow, Moore, Bryan & Fairburn, Architects, May-June 1959: pp. 18, 19, 22; March-April 1961: pp. 14-16

Eugene Field School, addition; Joe Boehning, Architect, May-June 1972: p. 11

Grant Junior High—Los Altos Elementary School; Flatow, Moore, Bryan & Fairburn, Architects, March-April 1962: pp. 7-9

Sandia High School; William Burke, Jr., Architect, March-April 1961: pp. 11, 12

**CARLSBAD**—Elementary School; Kern Smith, Architect, Sept.-Oct. 1959: p. 8

**FARMINGTON**—Hermosa Junior High School; Wolgamood, Millington & Associates, Architects, Dec. 1959: p. 11

**LAS VEGAS**—Vo-Ag Facilities; James N. Rowland, Architect, Jan.-Feb. 1979: p. 9

**ROSWELL**—New Mexico Military Institute Chapel; Rowland Associates, Architects, Nov.-Dec. 1968: p. 7

**SANTA FE**—Kearney Elementary School; McHugh, Kidder & Plettenberg, Architects, Sept.-Oct. 1965: pp. 13-16

**TATUM**—High School; Kern Smith, Architect, Sept. 1959: p. 8

**TRUTH OR CONSEQUENCES**—Hot Springs High School; Joe Boehning, Architect, May-June 1964: p. 14

**SCHOOLS—UNIVERSITIES, ALBUQUERQUE UNIVERSITY OF NEW MEXICO**, Jan.-Feb. 1974: pp. 11-16; Architecture, Department of, July, Aug. 1962: pp. 7-9; see also, **SCHLEGEL, DON PAUL**

Chemistry building (old), July-Aug. 1960: pp. 16-19

history, planning & construction, July-Aug. 1968: pp. 13-29

planning of, July-Aug. 1961: pp. 10-13; Jan.-Feb. 1962: pp. 16-19; March-April 1962: pp. 21-23; March-April 1967: pp. 17-21

Athletic Arena; Joe Boehning, Architect, May-June 1968: p. 12; Nov.-Dec. 1976: pp. 10-14; Jan.-Feb. 1978: p. 7

Biology Building, Addition; Flatow, Moore, Bryan & Fairburn, Architects, Nov.-Dec. 1970: p. 12

Bookstore; Holmes & Giannini, Architects, Jan.-Feb. 1978: p. 10

Business & Administrative Sciences, School of; John Reed, Architect, May-June 1970: p. 10

Chemistry Building, Addition; Ferguson, Stevens, Mallory & Pearl, Architects, May-June 1970: p. 11

Dormitory Complex; William Ellison, Architect, July-Aug. 1973: p. 15

Education, College of; Flatow, Moore, Bryan & Fairburn, Architects, May-June 1963: pp. 14-19

Golf Clubhouse; John Reed, Architect, July-Aug. 1965: pp. 20, 23; May-June 1968: p. 14; Nov.-Dec. 1968: p. 10

Health Sciences Learning Resources Center; Harvey Hoshour, Architect, Jan.-Feb. 1978: p. 8

Humanities Building; W. C. Kruger & Associates, Architects, Jan.-Feb. 1978: p. 11

Library; John Gaw Meem, Architect, Oct. 1959: p. 10

Physical Laboratories and Lecture Hall Pacheco & Graham, Architects, July-Aug. 1973: p. 14

**SCHOOLS—UNIVERSITIES, LAS CRUCES NEW MEXICO STATE UNIVERSITY**, Jan.-Feb. 1974: pp. 17-20

State Department of Agriculture Complex; W. T. Harris & Associates, Architects, March-April 1974: p. 10

Clinton P. Anderson Hall; Kruger, Lake & Henderson, Architects, May-June 1964: p. 15

Football Stadium; Boehning, Protz & Associates, Architects, Nov.-Dec. 1979: pp. 9-12

**SCHOOLS—UNIVERSITIES, LAS VEGAS HIGHLANDS UNIVERSITY**, Jan.-Feb. 1974: p. 20

planning of, Sept.-Oct. 1967: p. 13

Arts and Education Building; Kern Smith, Architect, Sept. 1959: p. 8

College of Education; Robert Walters, Architect, Sept.-Oct. 1967: p. 14

Thomas C. Donnelly Library; Robert Walters, Architect, Sept.-Oct. 1967: pp. 13, 14

Dormitory; Philippe Register, Architect, Sept.-Oct. 1967: p. 14

Melody Hall; Robert Walters, Architect, Jan.-Feb. 1966: pp. 16-19

**SCHOOLS—UNIVERSITIES, SANTA FE COLLEGE OF SANTA FE**—Dormitory; Philippe Register, Architect, July-Aug. 1961: p. 23

Liberal Arts Center; Philippe Register, Architect, Sept.-Oct. 1964: p. 11

Library; Philippe Register, Architect, July-Aug. 1967: p. 7

**SCHOOLS—UNIVERSITIES, SOCORRO INSTITUTE OF MINING & TECHNOLOGY**—Research Laboratory; William E. Burk, Jr., Architect, July-Aug. 1959: p. 12

**Scott, Winfield Townley**, "The Ugliness Around Us" July-Aug. 1963: pp. 18, 19

**sculpture**—see **ART IN ARCHITECTURE**

**SELENITE**, Sept.-Oct. 1966: pp. 18, 35

**SENA PLAZA**, Sept.-Oct. 1966: p. 41; Sept.-Oct. 1970: p. 17

**SHUTTERS**—movable, counterweighted, Jan.-Feb. 1962: pp. 21-26

**Simmons, Marc**, "Historic Preservation in Santa Fe: the Curry House Caper" Jan.-Feb. 1969: pp. 14-19

**Slates, R. Thomas**, "The James J. Dolan House, Lincoln, New Mexico" July-Aug. 1969: pp. 17-20

**Smith, James Merrick**—a conference address, Nov.-Dec. 1966: pp. 11-15

**Smith, Patricia**, Nov.-Dec. 1962: p. 19

**Smith, Wilke**, Jan.-Feb. 1964: p. 13

**Smith, William Kern**, Sept. 1959: p. 9; March-April 1962: p. 5

**SOCORRO**—historical buildings in, see **BACA (SEVERO) HOUSE**; **EL TORREON**; **SAN MIGUEL CHURCH**

**sod brick** used in construction, see **TERRONES**

**SOLAR ENERGY**, March-April 1974: p. 10; May-June 1975: pp. 11-19; May-June 1977: p. 9; Jan.-Feb. 1978: p. 9



# Why Masonry Construction Is Good For Business

Shopping center developers and managers agree. Whether it's brick, block, tile, terrazzo or stone, masonry construction is good for business. Its rich, warm textures enhance the visual appeal of a center, inside and out—attracting tenants and consumer traffic. But masonry's beauty isn't just cosmetic. Masonry centers are built fast, with an initial economy that is matched by long term cost savings. Masonry is fire resistant, offers excellent sound control and needs virtually no maintenance. And the thermal performance of masonry walls helps reduce energy consumption. So the masonry center helps satisfy both the government's energy conservation requirements and the tenant's demands for heating/cooling cost economy.

Next time you're thinking about building a new center or renovating an old one, make sure you're thinking about the kind of construction that's good for business. Masonry.

If you'd like to know more about doing good business in masonry, write the International Masonry Institute, 823 15th Street, N.W., Washington, D.C. 20005.

**INTERNATIONAL MASONRY INSTITUTE**

(The Bricklayers' International Union and the Mason Contractors in the U.S. and Canada)

Printed in U.S.A.



"Now that we're renovating more and more centers, we're using more and more masonry. Beautiful, economical and versatile, it's an excellent tool for rehab projects."

*Carl Barefoot  
Vice President*

*Crown American Corporation  
Johnstown, Pa.*

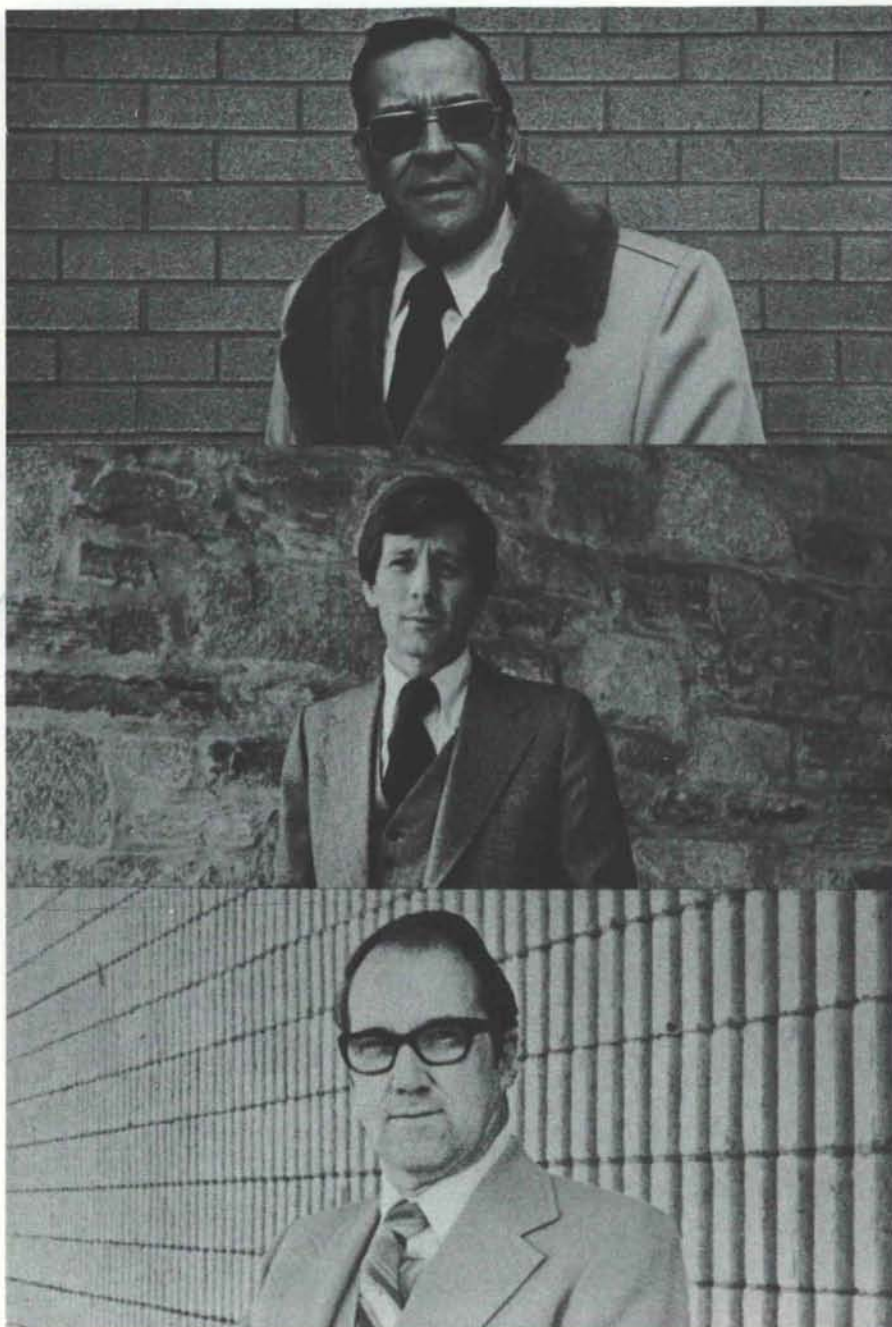
"You can't beat masonry walls and floors for easy maintenance—inside and out. So while we economize in building with masonry, we also save money maintaining it."

*Louis DiBitonto  
Construction & Design  
Mall Management Associates, Inc.  
Towson, Md.*

"Masonry walls help keep a center cooler in summer, warmer in winter.

With government regulations and fuel prices what they are, masonry's energy efficiency is pretty hard to ignore."

*Don Rake, CSM  
Ostendorf-Morris  
Cleveland, Ohio*



## MASON CONTRACTORS ASSOCIATION of NEW MEXICO



**Solnit, Albert**, "Lima, Peru—A Townscape for Pedestrians and Sidewalk Cafe Lovers" Sept.-Oct. 1964: pp. 13-15

**SPRINGER (vicinity of)**—historical buildings in, see DORSEY MANSION

**stained glass**—see ART IN ARCHITECTURE

**STAMPED METAL PANELING**, Jan.-Feb. 1963: p. 23; May-June 1966: pp. 8-17; Sept.-Oct. 1970: pp. 15, 17

**style ordinance**—see SANTA FE STYLE ORDINANCE

## T

**tablas (tablones)**—see LATIA

**TAOS**—architectural guide to, Sept.-Oct. 1970: pp. 29, 34

historical buildings in, see KIT CARSON HOUSE; LUHAN (MABLE DODGE) HOUSE MARTINEZ HOUSE

**Tatschi, John**, May-June 1962: p. 17

**Temko, Allan**, "A Conversation with Allan Temko" Nov.-Dec. 1964: pp. 9-15

**terneplate**—see ROOFS, pitched tin or iron

**TERRONES**, March-April 1960: pp. 16-19; Sept.-Oct. 1961: p. 17

**TORREON**, May-June 1962: pp. 19, 21; Sept.-Oct. 1966: pp. 16, 17

**Trampas**—see LAS TRAMPAS

**Trost, Henry**, March-April 1978: pp. 8, 9

**TULLY (PINCKNEY R.) HOUSE (Santa Fe)**, July-Aug. 1974: pp. 21-24

## U

**Udy, John M.**, "A Plan for UNM (University of New Mexico)...a critical appraisal" Jan.-Feb. 1962: pp. 16-19

**UGLINESS AROUND US**—an intermittent series Sept.-Oct. 1962: pp. 4, 5; March-April 1963: pp. 15-17; July-Aug. 1963: pp. 7-29; Sept.-Oct. 1964: pp. 8, 9; Jan.-Feb. 1966: pp. 9-13

**UNIVERSITIES**—and bond issue, Jan.-Feb. 1974: pp. 11-23

## V

**VADITO**—historical buildings in, see LAUREANO CORDOVA MILL

**VAUGHN**—historical buildings in, see LAS CHAVEZ HOTEL

**Vierra, Carlos**, July-Aug. 1978: p. 11

**VIGAS**, Sept.-Oct. 1960: p. 15; Sept.-Oct. 1966: p. 19; Sept.-Oct. 1967: pp. 20-23

imitation, March-April 1973: pp. 12, 17-19

**VIGIL (DONACIANO) HOUSE (Santa Fe)**, Sept.-Oct. 1966: p. 43

**von Horvath, Irene**, "An Architectural Control Ordinance for Santa Fe? Yes!" Nov.-Dec. 1960: pp. 13, 14

**Vreeland, Thomas Reed, Jr.**, Nov.-Dec. 1965: pp. 21, 23

## W

**WAGNER HOUSE (Santa Fe)**, July-Aug. 1978: pp. 10-14

**Warburton, Ralph**, "New Emphasis in Interior Design" July-Aug. 1972: pp. 21-23

**WATROUS**—historical buildings in, see WATROUS HOUSE

**WATROUS HOUSE (Watrous)**, Nov. 1959: pp. 10, 11

**Weidner, Urban C., Jr.**, Oct. 1959: p. 23

**Wertz, Joseph**, Jan. 1960: pp. 17-19

**Wilson, Spencer & John DeWitt McKee**, "Leave the Back of the Garage and Turn Left" Nov.-Dec. 1975: pp. 11-19; *ibid.* March-April 1977: p. 8, 9

**Wingert, Laban W.**, "So You're Going to Build a New...!" Sept.-Oct. 1979: pp. 13-17

**wooden walls**—see JACAL

**WOOD VENEER**—exterior, March-April 1960: pp. 16-19; interior, May-June 1966: pp. 8-17

**WORLD'S FAIR**—New Mexico Pavilion at 1965 New York World's Fair, Jan.-Feb. 1964: p. 7; Sept.-Oct. 1965: pp. 27-29

**Wright, George S.**, "Urban Renewal—Which Direction?" May-June 1964: pp. 19-23

**Wright, Henry L.**, "The Ugliness Around Us" July-Aug. 1963: pp. 7-11

## Y

**Yguado, Jose Luis**, "A Plan for UNM (University of New Mexico)...a critical appraisal" March-April 1962: pp. 21-23

## Z

**Zehner, Hugo**, March-April 1962: p. 29

## BOOK REVIEWS

Note: Book reviews are listed alphabetically by surname of author.

**Alex, William**, *Japanese Architecture*, Sept.-Oct. 1963: p. 25

**Blake, Peter**, *The Master Builders*, Sept.-Oct. 1961: pp. 25, 26. *God's Own Junkyard, the Planned Deterioration of America's Landscape*, May-June 1964: pp. 25, 26

**Boyd, E.**, *Popular Arts of Spanish New Mexico*, July-Aug. 1974: p. 9

**Branner, Robert**, *Gothic Architecture*, May-June 1962: pp. 29, 30

**Brown, Frank E.**, *Roman Architecture*, May-June 1962: pp. 29, 30

**Bunting, Bainbridge**, *Houses of Boston's Back Bay*, July-Aug. 1967: p. 7; Jan.-Feb. 1968: pp. 16, 17

**Bunting, Bainbridge, Jean Lee Booth & William R. Sims, Jr.**, *Taos Adobes*, July-Aug. 1964: p. 25; Sept.-Oct. 1965: p. 9

**Burchard, John & Albert Bush-Brown**, *The Architecture of America*, Nov.-Dec. 1961: pp. 24, 25

**Coke, Van Deren**, *Taos and Santa Fe, The Artist's Environment, 1882-1942*, Nov.-Dec. 1963: p. 23

**Coles, William A. & Henry Hope Reed, Jr.**, *Architecture in America: A Battle of Styles* March-April 1962: pp. 25, 26

**Connely, Willard**, *Louis Sullivan As He Lived*, July-Aug. 1960: pp. 8, 22

**Crews, Mildred & Wendell Anderson & Judson Crews**, *Patrocino Barela, Taos Wood Carver*, March-April 1963: pp. 23, 24

**Dixon, John**, *Architectural Design Preview U.S.A.* Sept.-Oct. 1963: p. 24

**Dominguez, Fray Francisco Antanasio**—translated and annotated by Eleanor B. Adams & Fray Angelico Chavez: *The Missions of New Mexico, 1776*, Jan. 1960: pp. 10, 26

**Doolittle, Rosalie with Harriet Tiedebohl**, *Southwest Gardening*, March-April 1960: p. 20

**Dutton, Clarence E.**, *Tertiary History of the Grand Canyon District, with Atlas*, May-June 1978: p. 17

**Espinosa, Jose E.**, *Saints in the Valley* July-Aug. 1960: p. 8

**Farbstein, Jay & Min Kantrowitz**, *People in Places: Experiencing, Using and Changing the Built Environment*, May-June 1979: pp. 6, 7

**Gebhard, David & Robert Winter**, *A Guide to Architecture in Los Angeles and Southern California*, Nov.-Dec. 1977: p. 9

**Gregg, Andrew K.**, *New Mexico in the Nineteenth Century, a Pictorial History*, May-June 1969: p. 23

**Haeger, Leonard G.**, *Housing Design for Production*, Sept.-Oct. 1964: p. 25

**Hoag, John D.**, *Western Islamic Architecture*, Sept.-Oct. 1963: p. 25

**Jacobs, Jane**, *The Death and Life of American Cities*, July-Aug. 1962: pp. 22, 23

**Jenkins, Myra Ellen**, editor: *Old Santa Fe Today*, May-June 1973: pp. 19, 20

**Joedicke, Jurgen**, *A History of Modern Architecture*, Jan.-Feb. 1961: p. 19

**Kaufmann, Edgar & Ben Raeburn**, *Frank Lloyd Wright: Writings and Buildings*, Sept.-Oct. 1960: pp. 9, 10

**Kubler, George**, *The Religious Architecture of New Mexico in the Colonial Period and Since the American Revolution*, July-Aug. 1973: p. 19

**Landscape Magazine**, *Landscape Autoguide, Tour 1, Santa Fe to Taos*, Nov.-Dec. 1962: p. 29

**Loomis, Sylvia G.**, editor: *Old Santa Fe Today* March-April 1967: p. 23

**Lumpkins, William**, *La Casa Adobe*, March-April 1962: p. 25

**MacDonald, William**, *Early Christian and Byzantine Architecture*, March-April 1963: pp. 24, 25

**Marks, Robert W.**, *The Dymaxian World of Buckminster Fuller*, Sept.-Oct. 1960: p. 9

**Millon, Henry A.**, *Baroque and Rococo Architecture*, May-June 1962: pp. 29, 30

**Millspaugh, Martin & Gurney Breckenfeld**, *The Human Side of Urban Renewal*, May-June 1961: p. 21

**National Trust for Historic Preservation**, *A Guide to Delineating Edges of Historic Districts*, Nov.-Dec. 1976: p. 7

**New Mexico State Planning Office**, *Historic Preservation: a Plan for New Mexico*, May-June 1971: pp. 7, 9

**Nylander, Jane C.**, *Fabrics for Historic Buildings*, May-June 1977: pp. 9, 11

**Owings, Nathaniel Alexander**, *The Spaces in Between, An Architect's Journey*, July-Aug. 1973: pp. 16-19

**Parachek, Ralph E.**, *Desert Architecture* May-June 1968: p. 10

**Parnall, Peter**, *The Great Fish*, Sept.-Oct. 1973: p. 23

**Paulson, Morton C.**, *The Great Land Hustle*, Jan.-Feb. 1973: pp. 9, 14

**Perrin, Richard W. E.**, *The Architecture of Wisconsin*, May-June 1968: pp. 20, 21

**Preisner, Wolfgang F. E., Ed.**, *Methods and Application, Facility Programming*, March-April 1979: pp. 9, 15

**Read, Herbert**, *A Concise History of Modern Painting*, March-April 1960: p. 10, 20; *The Form of Things Unknown*, July-Aug. 1961: p. 25

**Richardson, Albert & Hector Corliato**, *The Art of Architecture*, Jan.-Feb. 1961: pp. 19, 21

**Robertson, Donald**, *Pre-Columbian Architecture*, Sept.-Oct. 1963: p. 25

**Saalmann, Howard**, *Medieval Architecture*, March-April 1963, pp. 24, 25

**Scranton, Robert L.**, *Greek Architecture*, March-April 1963: pp. 24, 25

**Scully, Vincent, Jr.**, *Modern Architecture*, May-June 1962: pp. 29, 30

**Stedman, Myrtle & Wilfred**, *Adobe Architecture*, Sept.-Oct. 1973: p. 23

**Steiner, Oscar H.**, *Our Housing Jungle and Your Pocketbook*, May-June 1961: p. 21

(Continued Page 18 )



(Book Reviews Continued from page 17)

Tunnard, Christopher & Boris Pushkarev: *Made American: Chaos or Control?* Sept.-Oct. 1963: pp. 17, 19

Warner, Raynor M., Sibyl McCormac Groff & Ranne P. Warner with Sandi Weiss: *Business and Preservation*, March-April 1979: pp. 7, 9

Western Architect and Engineer (periodical) Dec. 1959: pp. 8, 16

Wu, Nelson, I.: *Chinese and Indian Architecture*, Sept.-Oct. 1963: p. 25

Zucker, Paul: *Town and Square*, May-June 1960: pp. 8, 22

(NMA News continued from page 7)

7. Rohane, K.P., et. al., *Planning and Design Guidelines: The Comprehensive Elementary School Playground*. (preliminary draft) 157 pages (1981)—Child development needs and phases form the basis for this handbook for playground development. \$12.50
8. Lucero, S.L., Preiser, W.F.E., et. al. *Post-Occupancy Evaluation of the New Mexico Union*. 112 pages (1981)—A multi-method assessment of user needs and use problems in a student union building. \$12.50
9. Eshelman, M.P., Preiser, W.F.E., et. al., *Albuquerque High School—A Post-Occupancy Evaluation*. 134 pages (1981)—Short and long term problem identification and recommendations. \$12.50
10. Preiser, W.F.E., et. al., *The Janni Residence—A Post-Occupancy Evaluation*. (preliminary draft) 40 pages (1980)—In-use assessment of a residence the design of which was based on a detailed programming effort. \$ 5.00
11. Lucero, S.L., Preiser, W.F.E., et. al., *Manzano del Sol Retirement Village and Nursing Home Complex: A Post-Occupancy Evaluation*. 142 pages (1981)—A multi-method approach to post-

occupancy evaluation to be carried out at regular intervals. \$12.50

12. Lucero, S.L. Preiser, W.F.E., Eshelman, M.P., et. al., *Navajo Mission Academy New Student Housing—Research, Program and Schematic Design*. 95 pages (1981)—A programming research document which identifies culture specific design criteria for Navajo student housing. \$10.00

13. Rohane, K.P., Eshelman, M.P., Preiser, W.F.E., et. al., *Evaluation of Outdoor Space Use—The University of New Mexico Campus*. 95 pages (1981)—A multi-method evaluation of outdoor spaces with recommendations for planning and landscaping of a university campus in the U.S. Southwest. \$10.00

14. Marino, Peter, et. al., *Architectural Programming Requirements—College of Education, University of New Mexico*. 165 pages (1977)—A behavior based program for three options of space adaptations to current use requirements. \$15.00

15. Clem, P., et. al., *A Comparison of Interaction Patterns in an Open Space and a Fixed Plan School*. 66 pages (1973)—A systematic observational analysis of first and fourth grade pupils' interaction, enhanced largely by open space design. \$ 7.50

16. Parshall, S., et. al., *Energy Consumption and Social Interaction in Mobile Home Parks*. 121 pages (1974)—The influence of mobile home park configurations on socialization and energy consumption. \$12.50

17. Preiser, W.F.E., *Behavioral Design Criteria in Student Housing—The Measurement of Ver-*

*balized Response to Physical Environment*. 165 pages (1969)—An early post-occupancy evaluation of three student housing types using the Thurstone Method of equal appearing interval scales resulted in a comparison of environmental quality profiles. \$15.00

18. Preiser, W.F.E., *Analysis of Pedestrian Velocity and Stationary Behavior in a Shopping Mall*. 100 pages (1973)—A case study of the Columbia, MD shopping mall reveals among other items, the influence of crowding and floor materials on shopper speed. \$10.00

19. Preiser, W.F.E. and Brecht, M., *The Visually Handicapped and the Built Environment—The Tactile Mapping and Building Directories*. 19 pages (1981)—A bibliography-tactile mapping of environments. \$ 2.50

20. Preiser, W.F.E. and Rohane, K.P., *A Survey of Architectural Control Mechanisms in Western Industrialized Countries*. (preliminary draft) 36 pages (1980)—A comparative analysis of visual/aesthetic controls, itemized by regulated issues and degree of enforcement in English speaking countries. \$ 5.00

21. Brooks, P., Preiser, W.F.E., et. al., *A Post-Occupancy Evaluation of the Wentworth Building*. 185 pages (1981)—A multi-method post-occupancy evaluation of the student union building at the University of Sydney, Australia. \$15.00

22. Taylor, A.P., et. al., *Environmental Education—An Annotated Bibliography*. 38 pages (1981) \$ 5.00

#### new mexico architecture

Published bi-monthly by New Mexico Society of Architects, American Institute of Architects, a non-profit organization. Editorial Correspondence should be addressed to John P. Conron, Box 935, Santa Fe, N.M. 87501. (505) 983-6948.

**Editorial Policy:** Opinions expressed in all signed articles are those of the author and do not necessarily represent the official position of the publishing organization.

**Additional copies of NMA available from John P. Conron FAIA/FASID, P.O. Box 935, Santa Fe, N.M. 87501.**

**Change of address:** Notifications should be sent to New Mexico Architecture, 425-A Val Verde, S.E., Albuquerque, N.M. 87108 (505) 265-7010 at least 45 days prior to effective date. Please send both old and new addresses.

**Subscriptions:** Write Circulation, New Mexico Architecture, 425-A Val Verde, S.E., Albuquerque, N.M. 87108. Single Copy \$1.00. Yearly subscription \$5.00.

**Advertising:** Send requests for rates and information to Mildred Brittle, New Mexico Architecture, 425-A Val Verde, S.E., Albuquerque, N.M. 87108, (505) 265-7010.

#### nma

Printed by Hall-Poorbaugh Press, Inc., Roswell, New Mexico

INDEX OF FIRMS who make possible the publication of NMA and the page upon which their message is found:

Albuquerque Gravel Products Co.	19
American Business Interiors	4
Builders Block	19
Crego Block Co.	2
Featherlite Block Co.	4
Hydro Conduit Corporation	20
Kohler	Insert
Mason Contractors Assn. of N.M.	16
Mountain Bell	8
New Mexico Marble & Tile, Inc.	4
Pella Products Company of N.M.	19
Public Service Company of N.M.	6
Santa Fe Lumber & Millwork, Inc.	4
Stanley Structures	5





WOOD WINDOWS  
CLAD WINDOWS



SLIDING GLASS DOORS  
FOLDING DOORS

## Pella Products Company of New Mexico

RESIDENTIAL, INSTITUTIONAL, COMMERCIAL

P.O. Box 3311, Albuquerque, New Mexico 87190 • Phone (505)345-3501



## BUILDERS BLOCK

Members:  
New Mexico Concrete  
Masonry Association  
National Concrete  
Masonry Association

***Quality Concrete Masonry Products  
and many allied building materials.  
Serving New Mexico and West Texas  
for over a quarter of a century.***

P.O. Box 1633  
Roswell, NM 88201  
505/622-1321

P.O. Drawer FF  
Las Cruces, NM 88001  
505/524-3633

Telephone  
El Paso  
915/532-9695

# AGP

*Home of the  
Concrete Giant!*



ALBUQUERQUE GRAVEL PRODUCTS COMPANY

***DEDICATED TO QUALITY  
AND SERVICE***

600 John Street, S.E. P. O. Box 829 Tel. (505) 242-5265 Albuquerque, N. M. 87103



Postmaster: Address Correction Requested  
New Mexico Architecture  
425-A Val Verde, S.E.  
Albuquerque, NM 87105

Bulk Rate  
U.S. Postage  
PAID  
Roswell, N.M.  
Permit No. 47

## *In Context...*

The precast panels used in the Aztec, N.M. High School complex fit naturally into their surroundings. An excellent use of architectural panels by Phil Register & Assoc.



**HYDRO CONDUIT CORPORATION**

2800 SECOND STREET, SW

PHONE 247-3726

ALBUQUERQUE, NEW MEXICO 87103