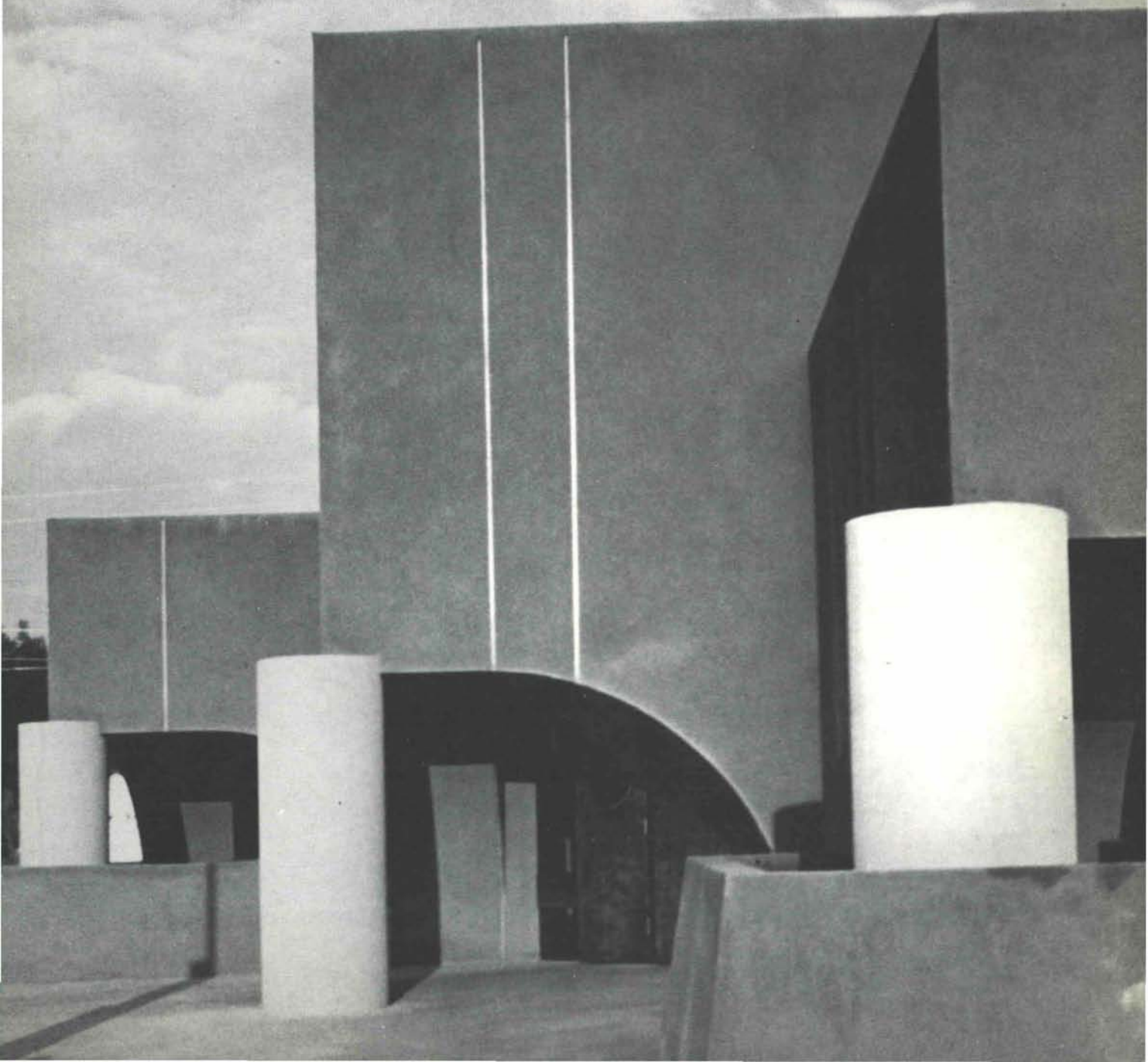


new mexico architecture

July-August 1979

\$1.00



BASIC AS BLACK



THE BLOCK

LOOK TO THE LEADERS



Introducing

SEQUOIA

Kohler's Newest Accent Color







SEQUOIA

Warm . . . versatile . . . elegant. That's Sequoia, an exciting addition to the spectrum of bold Kohler Accent colors.

Sequoia. A bright Accent for gentle earthtones like Kohler's Parchment, Mexican Sand or Harvest Gold. Beautiful with white, Espresso or Sunflower. Dazzling with neutral colors like Black Black or Country Grey. Sequoia. For a colorful splash of warmth and sunshine.

Above: Man's Lav in Sequoia complements marble countertop. Man's Lav in self-rimming enameled cast iron with Alterna Onyx Water-Guard faucet.

Left: Spacious Castelle lavatory in Sequoia goes great with woodtone countertop. Castelle in self-rimming enameled cast iron with Alterna Onyx Water-Guard faucet.

Opposite: A garden bath with Kohler's enameled cast iron Steeping Bath Whirlpool in Sequoia. Alterna Onyx faucet and fittings in 24 carat gold finish.

On the cover: Green grows the garden . . . and bright is the bathroom with Kohler fixtures — Steeping Bath Whirlpool and Tahoe lavs — in Sequoia. Pompton toilet in Mexican Sand.



Pictured: The Epicurean, Kohler's newest kitchen sink, with wooden drainboard, hardwood cutting board, convenient garbage disposal basin, spacious scrubbing basin. In self-rimming enameled cast iron with Alterna faucet in chrome finish.

Color is a language all its own. And Kohler Accent colors are its punctuation. Vibrant, bright and exciting, Accent colors let you inject instant glamor and a touch of your personality into the bath, powder room and kitchen.

Play Sequoia against the woodtones of kitchen cabinets and countertops for instant excitement. Sequoia brings natural elegance and beauty to your decorating scheme, and makes the work center of the kitchen brighter, lovelier and livelier.

Sequoia and three other Kohler Accent colors — Sunflower, Antique Red and Blueberry — are available in The Bath and Steeping Bath bathtubs and whirlpool baths; Man's Lav, Tahoe, Farmington, Radiant and Castelle lavatories; Epicurean, Trieste, Lakefield, Brookfield, Mayfield and Urbanite self-rimming kitchen sinks; the 12" by 12" Addison bar sink. Antique Red and Sunflower are also available on the Gibson and Gimlet acrylic bar sinks.

Contact your local Kohler representative for more information today...

Active Plumbing Supply
1500 Candelaria NE
Albuquerque, NM 87107
(505) 345-8587

Northwest Supply Co.
2401 E. Aztec Avenue
Gallup, NM 87301
(505) 863-3807

Doc Savage Supply Co.
932 E. McGaffey
Roswell, NM 88201
(505) 823-0623

Doc Savage Supply Co.
2116 Claremont NE PO Box 6549, Station B
Albuquerque, NM 87107
(505) 345-5646

Vinton Eppsco
4220 Second St. NW PO Box 6569
Albuquerque, NM 87107
(505) 345-4522

P-H-C Industrial Supply Co., Inc.
1000 Siler Park Road P.O. Drawer F
Santa Fe, NM 87501
(505) 471-1811

KOHLER

KOHLER CO. KOHLER, WISCONSIN 53044



• vol. 21 no. 4 •

The Board of Directors for the New Mexico Society of Architects has initiated a program to supplement the income to *New Mexico Architecture* magazine. To be sure, our advertisers are the firm skeleton and sound body of the financial support; they, as always, deserve our continued appreciation and constant thanks.

Supplementary financial support from our readers will provide additional editorial flesh, thus making the magazine an even more attractive advertising vehicle.

John C. Bland, president of the Society has sent the following letter to all NMSA members:

Dear Member,

NMA, the outstanding publication of NMSA is entering its 21st year of continuous publication. Our magazine, yours and mine, is currently being read by people in various parts of the U.S. and several foreign countries. Through our magazine we have the opportunity to reach a vast market and tell them what we, as architects, are doing here in beautiful New Mexico.

As you know, none of the dues collected by NMSA goes to publication, however, to coincide with a *NMA* policy of continued growth in the quality image of *NMA* as well as its circulation, we are asking for your help in the form of a possible tax exempt donation to *NMA* so that we may continue to publish one of our primary tools for public relations.

The program for donations is as follows:

\$1,000 & up—Sustaining
Name listed in *NMA* every issue for 1 year.

\$500 - \$999—Sponsor
Name listed in *NMA* every issue for 1 year.

\$100 - \$499—Patron
Name listed once during year in *NMA*.

\$25 - \$99—Friend
Name listed once during year in *NMA*.

We also ask that you take the time to recognize and thank those who advertise in *NMA*. Through their continued support (a few for as long as 20 years) we have been able to bring you *NMA*.

Sincerely,
John C. Bland

☐ ☐ ☐ ☐

The *NMA* staff wishes to thank those members who have already responded to the letter; we value their support.

MAGAZINE SUPPORTERS:

Sponsor: Charles E. Nolan, Jr.
Patron: Burran & Smith
Flatow, Moore, Bryan & Assoc., Inc.
Friend: Fernandez & Trujillo

nma

• july-aug. 1979 • new mexico architecture

NMA News 7

Santa Fe Past and Present
UNM 1979-80 Public Lecture Series

New and Remodeled Banking Facilities 8

New Mexico Bank & Trust Co., Hobbs
First National Bank of Roswell
Western Bank, Alamogordo
Rio Grande Valley Bank, Albuquerque

Index to Advertisers 14

(Cover: Western Bank of Alamogordo — Jerry Goffe—Photography)

—Official Publication of the New Mexico Society of Architects, A.I.A.—

Society Officers

President—John C. Bland
President-Elect—Randall L. Kilmer
Secretary-Treasurer—Robert J. Strader, Jr.
Director—Wilbur T. Harris
Director—Kestutis Germanas
Director—Ron Hutchinson
Director—John P. Conron, FAIA
Director—Edwin C. French
Director—Channell Graham
Director—Stanley French
Director—Bernabe Romero, Jr.
Director—Ervin Addy III
Director—George C. Owen
Director—Richard Waggoner
Director—William L. Burns
Director—Sam Pool
Executive-Secretary—Leigh Matthewson

Commission for NMA

John P. Conron, FAIA/FASID,—Editor

Bainbridge Bunting—Editorial Consultant

Mildred Brittelle—Accounting
and Circulation

Charles E. Nolan, Jr.



*New Mexico's only exclusive Hard Materials
and Related Specialties Distributor*

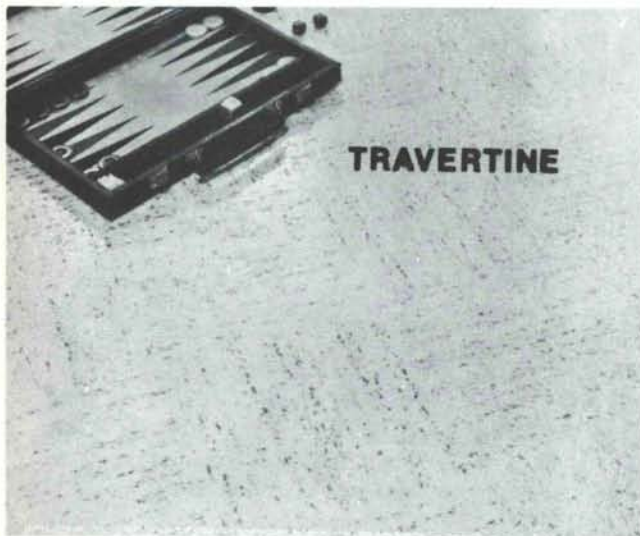
4216 Edith Boulevard N.E.
Albuquerque, New Mexico 87107
505-345-8451

We Feature a Complete Line of:

Drywall and Accessories
Plaster
Metal Lath and Accessories
Light Gauge Steel Framing
Insulation
Drywall and Tek Screws
Power and Hand Tools
Quarry Tile
Glasweld/Mirawall

Congoleum® FLOR-EVER®

COMMERCIAL VINYL FLOORING



Travertine is commercial flooring at its best...designed like no other floor to meet the changing commercial needs and demands, including virtually seamless installations in most applications. Here is a beautiful and delicate reproduction of a natural material...reproduced as never before. Travertine has a subdued background and a seamless tile effect that sets it apart from traditional commercial flooring. Available in 9' and 12' widths and 12 color choices.



125 DALE, S.E.
P.O. BOX 25111, ALBUQUERQUE, NM 87125
PHONE 877-5340

Acrylic
Construction Sealant
Poly Film
Polycarbonates
Skylights



plastic supply
& fabrication
3267 candelaria ne
345-6681

ALBUQUERQUE TESTING LABORATORY.... TO BE SURE!



SUBSOIL INVESTIGATIONS
PHYSICAL TESTING
INSPECTION
RESEARCH
WELDING CERTIFICATION
NUCLEAR DENSITY
LABORATORY ANALYSIS AND
EVALUATION OF CONSTRUCTION
MATERIALS

ALL WORK DONE UNDER SUPERVISION OF REGISTERED
PROFESSIONAL ENGINEERS

532 JEFFERSON, N. E.
ALBUQUERQUE, NM
P. O. BOX 4101

PHONE 255-8916 or 255-1322



AZTEC

MEANS...

ONE STOP FLOOR COVERINGS



IMPORTED CERAMIC TILES

Italian, glazed quarry mosaics,
and unglazed quarry



CARPET

Full line of residential,
commercial and kitchen
carpets — Oriental rugs,
runners and area rugs



SHEET VINYL

Armstrong, Mannington,
Congoleum, GAF



WALL PAPER

Over 200 books in stock



MEXICAN TALAVERA AND SALTILLO TILES

DECORATIVE
CONSULTANTS
AVAILABLE



SINCE 1960

TILE and CARPET

2520 SAN MATEO N.E.
PHONE 265-9579



Architect: Dick Waggoner & Associates
Builder: Brackeen Construction Co.

Meet the fastest, toughest joist in the West.

When architect Dick Waggoner designed this 6,800 square-foot Roswell, New Mexico home, his associate Tom Rodgers specified the fastest, toughest — yet most cost-efficient — joist in the West. The TJI from Trus Joist.

A major factor was time. And the TJI allowed Brackeen Construction to save a lot of it: according to Tom Rodgers, it took just two hours to lay in the roof slope — unheard of with ordinary solid-sawn joists.

The TJI has a wide nailing surface, yet it's much lighter in weight than ordinary joists. And it's about 30% stronger. So the TJI works harder, but the tradesmen don't.

"It took just two hours to lay in the roof slope."

The secret of the TJI's remarkable performance lies in its unique, patented design and a revolutionary new flange material called Micro=Lam,* a laminated veneer lumber that's being acclaimed the most exciting new wood fiber development since plywood.

If you'd like to know more about the fastest, toughest, most cost-efficient joist in the West, call us. We have a story you'll never forget.

In Albuquerque, call McGill Stephens, Inc.
300 Virginia SE, Albuquerque, New Mexico 87108
Phone 505/265-5935

In El Paso, call McGill Stephens, Inc.
4100 Rio Bravo St., Suite 320, El Paso, Texas 79902
Phone 915/544-4505

 **TRUS JOIST CORPORATION**

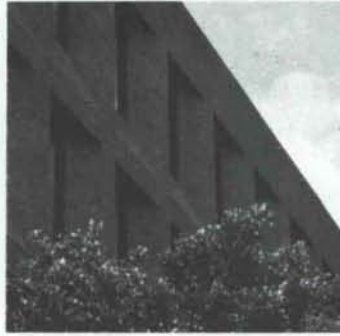
HOW BEAUTIFUL IT IS TO COME IN UNDER BUDGET.

Engineered loadbearing masonry has established itself as a tight-budget building system. But with its fame for frugality came an undeserved reputation for colorless architecture. Houston's Halbouty Center, developed by Gerald D. Hines Interests, should set the record straight once and for all.

Neuhaus + Taylor, Architects, ignored the traditional notion of compartmentalized loadbearing design and erected an innovative structure featuring two handsome atria.

Wide-open spaces were a requisite for versatile leasing of the property; engineered masonry accommodated every need.

With considerable exposed brick throughout the lobby and interior, The Halbouty Center is a beautiful expression of masonry as a decorative and functional material. But its beauty is far more



than skin deep. The original owner's budget was undercut 15% by the use of engineered masonry, yet architectural detail was not compromised.

Of course, there are long-range economies to an engineered masonry building, too. Fire walls are inherent to the system. The mass of masonry walls makes them highly energy-efficient. And once the tooling is finished on a masonry structure, its walls are virtually maintenance-free. Engineered masonry. It makes any budget beautiful to work with.

For more information, refer to the Engineered Loadbearing Masonry insert in Sweet's, U.S.A. #4.4d/Im & Canada #4uni, or write to IMI.

International Masonry Institute

(The Mason Contractors Association and The Bricklayers' Union of the U.S. and Canada.)

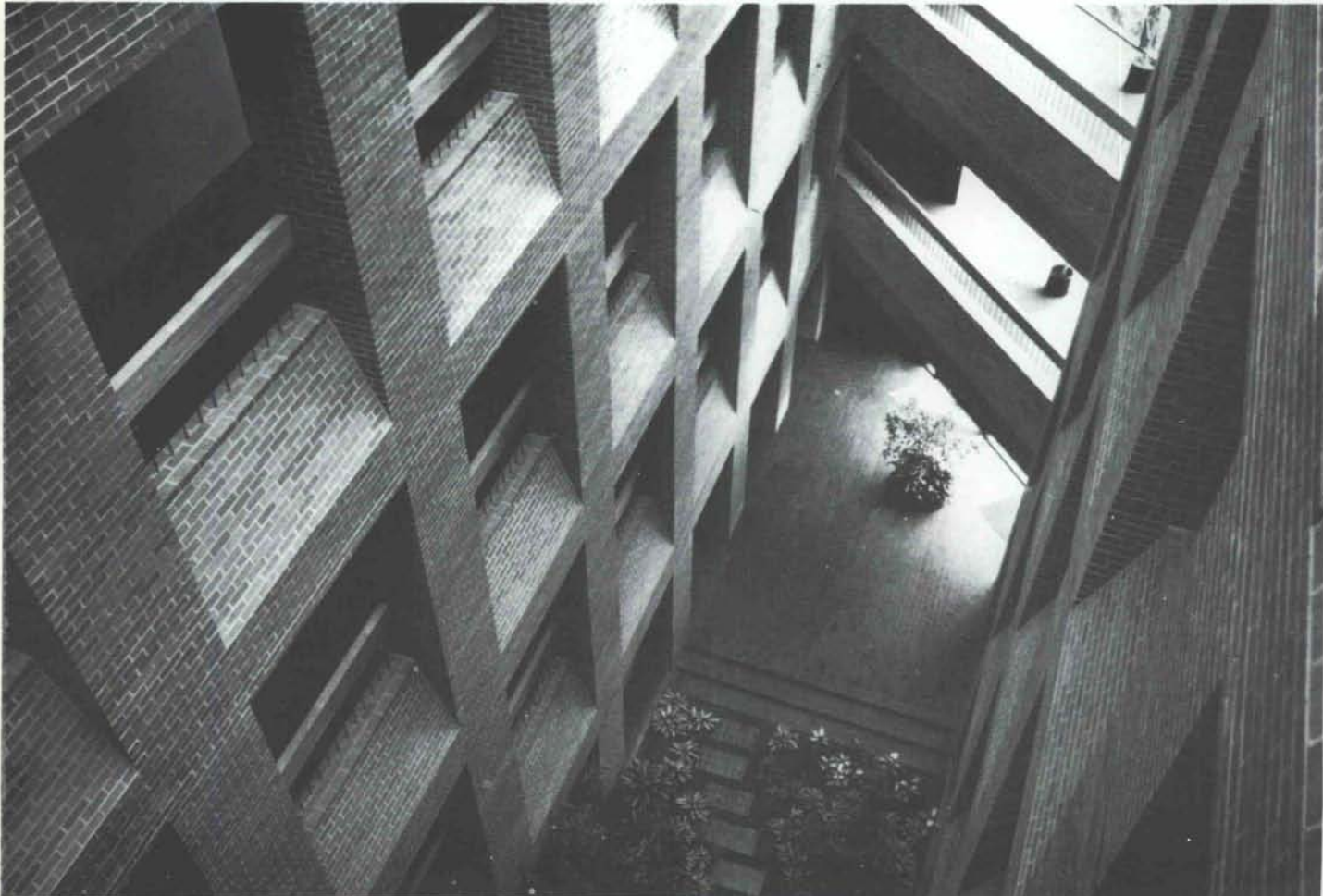
Suite 1001, 823 15th St., N.W.

Washington, D.C. 20005, (202) 783-3908



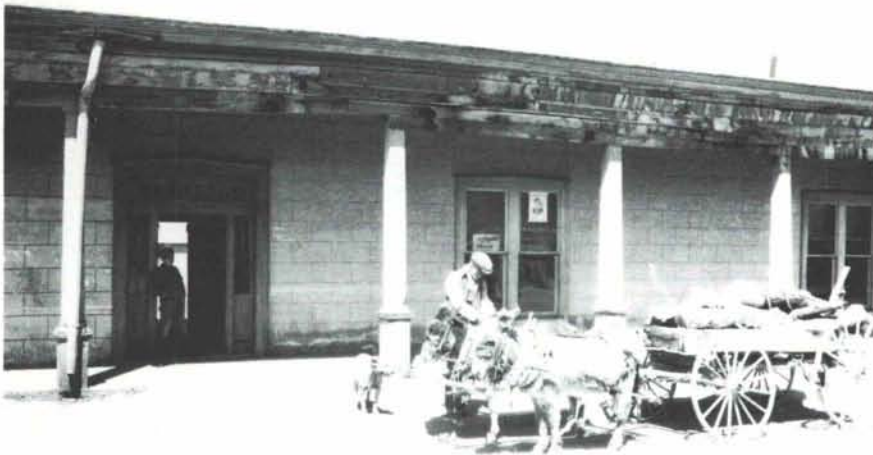
ENGINEERED MASONRY. BEAUTIFUL IT IS.

Developer: Gerald D. Hines Interests. Architect: Neuhaus + Taylor. Consulting Engineers: Krahle & Gaddy.



MASON CONTRACTORS ASSOCIATION OF NEW MEXICO

SANTA FE PAST AND PRESENT



A scene in old Santa Fe by photographer T. Harmon Parkhurst. Photo Archives, Museum of New Mexico.

In late July, the Santa Fe Gallery of Photography opened a show entitled, **Santa Fe: Past and Present**. The exhibit includes over 100 photographs of the town taken between 1860-1979. Many of the historic images are from the Photo Archives of the Museum of New Mexico. Works by the area's well known photographers, such as Laura Gilpin and Ernie Knee are included as well as lesser known contemporary artists. The show was funded in part by a grant from the New Mexico Arts Commission and the National Endowment for the Arts.

As photographs were gathered for the exhibit, the gallery owners began to realize the value of the material they had been working with; a catalog would preserve for the public the spirit of change and uniqueness that has long characterized Santa Fe.

Gallery members have been soliciting support from local businesses to aid in publishing this catalog. Several bookstores have paid for pre-publication orders. The projected retail cost is \$4.00-\$5.00. The gallery members hope to raise some operating funds through the sale of the catalog in their photographic bookstore; also, it will be marketed to other galleries and shops with related interests.

The catalog is being designed by Eleanor Caponigro of Tesuque.

Ms. Caponigro recently won the National Book Design Award for her work on the Steiglitz portraits of O'Keeffe published by the Metropolitan. Including approximately 35 reproductions of historical and contemporary images of Santa Fe, the catalog's introduction will be written by Dr. Richard Rudisill of the Museum of New Mexico. Printing will be done by Blue Feather Press, a local concern that produces some of the best photographic reproduction in the state. A list of photographs in the exhibition and their sources will be included in the initial edition of 1000. We are grateful to those who have donated their professional expertise to this project.

An exhibit of this nature and scale has never been done before. We invite you and your members and friends to attend this show which will run through September 7th. The Santa Fe Gallery of Photography is located at 104 W. San Francisco St. (upstairs), Santa Fe, N. M. 87501.

The Santa Fe Gallery of Photography is a tax exempt, non-profit organization dedicated to the exhibition of fine photography. In its two year history it has launched exhibits of contemporary and historical importance. Donations towards the publication of the catalog by interested individuals or organizations are tax-deductible.

UNM 1979-80 PUBLIC LECTURE SERIES

This lecture series is co-sponsored by the School of Architecture and Planning and the Albuquerque Chapter, A.I.A. Lectures start at 7:30 PM in the Kiva Auditorium on the UNM Campus. There is no charge for admission.

FALL 1979: Thursdays 7:30 pm, Kiva Auditorium, UNM.

September 20

"Searching For A Regional Architecture"
BENNY M. GONZALES, FAIA, President of B. M. Gonzales Associates, Phoenix, AZ. Hopi Cultural Center and Scottsdale City Hall. Winner of numerous design awards for residential, commercial and public buildings in the Southwest, the U. S. and abroad.

October 18

"Responding to the Elements—Energy Conservative Design"

RALPH KNOWLES, AIA, School of Architecture and Planning, University of Southern California, Los Angeles, CA. Author of *Energy and Form: An Ecological Approach to Urban Growth*. Known for his research to "develop ecological frameworks within which buildings could be formed and located to minimize the energy cost of maintaining their equilibrium in a natural environment of cyclic forces."

November 15

"Design in an Urban Context"

HARRY WEESE, FAIA, President, Harry Weese and Associates, Chicago, IL. Designer of the First National Plaza in Albuquerque, United States Embassy in Accra, Ghana, and restoration of the Adler-Sullivan Auditorium Theater in Chicago.

SPRING 1980: Mondays 7:30 PM, Kiva Auditorium, UNM

January 28

"Timeless Values as Directions for Design"

MORTON HOPPENFELD, AIA, AICP, Dean, School of Architecture and Planning, UNM. Designer of Columbia, Maryland new town. In a world where innovation and change are perceived as norms how do we learn to design for the future?

February 11

"Making the Ordinary Extraordinary"

FRANK O. Gehry, FAIA, President, Frank O. Gehry and Associates, Santa Monica, CA. Award winning designer of music pavilions, shopping centers, university buildings and homes, an advocate for architecture as art, yet responsive to human needs.

March 10

"It is Not The Buildings That Count"

M. PAUL FRIEDBERG, M. Paul Friedberg and Partners, New York City. Author of "Play and Interplay", urban design including malls, large scale residential complexes, parks and plazas, the M. S. Pavilion at World's Fair in Osaka and the Moscow World Trade Center.

April 7

"History as Guide for Contemporary Design"

CHARLES W. MOORE, FAIA, University of California, Los Angeles. Prolific writer, critic and trend-setting designer of buildings and places with a smile and the School of Architecture and Planning, University of California, Los Angeles.

New and Remodeled Banking Facilities

NEW MEXICO BANK & TRUST CO. Hobbs, N. M.

The Owner had three existing drive-up windows plus a walk-up window. These facilities were located across the alley to the north of the main office. The Owner's drive-in banking business had grown to a point that, during peak hours, the facility was insufficient to handle the volume at a pace that was convenient for their customers. Due to property restrictions, the inability to add facilities, and new innovations in banking equipment, the decision was made to demolish the facilities and start over.

The Owner commissioned the Architect to design six customer service lanes: one pneumatic unit for recreational vehicles, four pneumatic units for automobiles, and one lane for a special 'telelift' track for transporting large items.

The Bank also owned a rental building on the site which was to be converted to a drive-up teller space, a real estate loan department and a warehouse space.

All of the above, with exception of the banking equipment (which was purchased directly by the Owner) was completed for a cost of \$190,400.00.

Design and Construction Credits:

Architect: Killian and McBeth, Hobbs, N.M.

General Contractor: Purcell Construction Company

Sub-Contractors:

Electrical: Southwestern Electric Shop, Inc.

Mechanical: Marker Sheet Metal

Stucco: Claude Burger

Roofing: Helms Roofing

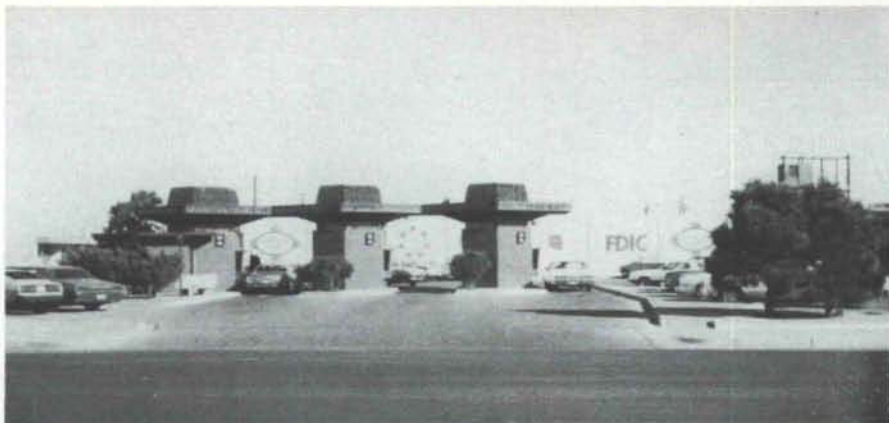
Glass, Glazing and

Kawneer Aluminum Facia: City Glass and Mirror Co.

Landscaping: Los Arboles

Banking Equipment: The Mosler Safe Company

Photographer: Ray's Studio

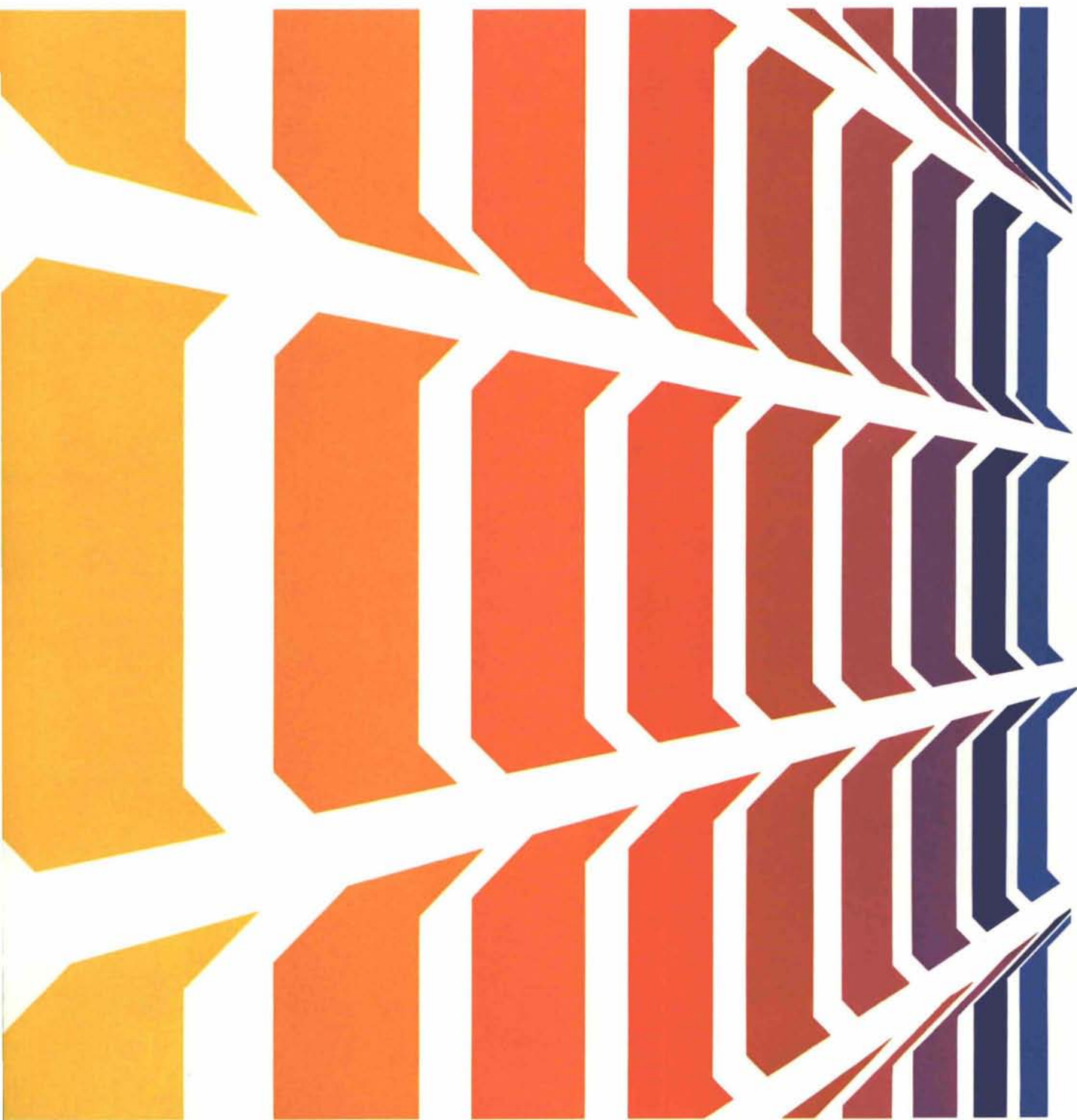


Before

After



Quality



La Mansion del Norte
San Antonio, Texas

Architect & Structural Engineer
Harwood K. Smith & Partners
Dallas, Texas

General Contractor
Henry C. Beck
Dallas, Texas



Prestressed Concrete Puts Quality Where It Counts In Hotel and Motel Construction

Keystone Resort Hotel
Dillon, Colorado

Architect

Flood, Meyer & Associates, Inc.
Los Angeles, California

General Contractor

Olson Construction Company
Denver, Colorado

Structural Engineer

Wheeler & Gray
Los Angeles, California

Albuquerque Inn
Albuquerque, New Mexico

Architect

Fuji, Parsons, Inc.
Fowler, California

General Contractor

George Rutherford Construction
Albuquerque, New Mexico

Structural Engineer

Design Professionals, Inc.
Albuquerque, New Mexico



Stanley Structures produces a complete range of architectural and structural prestressed concrete products for construction of hotels and motels. Our products offer the advantages of soundproof construction, low maintenance costs, fire resistance and fast construction.

Prestressed concrete buildings represent significant savings to investors and owners.

Insurance rates are lower. As a noncombustible material, concrete will contain fires and permanently protect the structure, thus providing safety and security for guests.

More precise pricing of building materials and a reduced contingency margin can be realized by the owner or developer who chooses prestressed concrete. Expensive and often inefficient on-site labor can be significantly reduced. Work stoppage factors, like inclement weather, are practically eliminated.

Since a greater portion of the project is handled on a fixed cost basis to the builder, the effects of spiraling inflation can be better controlled. A shorter construction period means a faster payback of the construction loan. The investors can also realize income

sooner through earlier occupancy of the building. Overall, all parties benefit from savings in time and money.

In hotel and motel design, prestressed concrete's aesthetic appeal is limited only by the architect's imagination. Durable and attractive concrete finishes enhance exterior and interior design features. Structural concrete units functionally accommodate space requirements of the total building, including rooms, lobbies, parking garages, corridors and swimming pools.

Prestressed concrete hotels and motels are built for wear and endurance with features designed to keep operating expenses low and maximize profits for the owners.

The use of prestressed concrete in walls and floors also helps assure acoustical control, which is an absolutely essential quality in hotel or motel construction.

Stanley Structures has built a network of prestressed concrete plants throughout the west. Give us a call. We have the capabilities and experienced personnel to help you incorporate prestressed concrete into your next construction project and put quality where it counts.

The Right Results From The Right Approach



We've put it all together before — countless times. Our experience in design, production, delivery and erection of structural and architectural concrete is second to none. We have the know-how to economically construct sound structures with broad appeal — the right results.

Our network of companies produces a wide range of standard and custom building components, permitting a variety of combinations and assemblies — the right approach.

When the subject is prestressed concrete structures, professional design consultants welcome our specialized knowledge. Be sure to talk to us at an early stage in your planning.



Stanley Structures

A Subsidiary of The Stanley Works

Colorado

5801 Pecos Street
P.O. Box 21070
Denver, Colorado 80221
Phone 303-458-6301

New Mexico

2340 Alamo Southeast
Suite 106
Albuquerque, New Mexico 87106
Phone 505-247-0391

Montana

1537 Avenue D.
P.O. Box 20336
Billings, Montana 59104
Phone 406-248-7131

Texas

First National Bank Tower
Suite 570
6243 I-H 10
San Antonio, Texas 78201
Phone 512-734-7923

Damson Oil Building
Suite 180
260 North Belt East
Houston, Texas 77060
Phone 713-448-8495

Wyoming

421 Livingston Avenue
P.O. Box 527
Cheyenne, Wyoming 82001
Phone 307-638-8931



FIRST NATIONAL BANK OF ROSWELL

The First National Bank of Roswell is the oldest and largest bank in Chaves County. It has been at the same location at 3rd and Main for over 50 years. During that time the building has been remodeled two times. The last refurbishing was done in 1976 by Waggoner and Associates, Inc., of Roswell.

The problem was the bank's physical image. The older red brick, glass block austere rectilinear edifice did not communicate with the aggressive attitude of the bank's present leadership. The architects were directed to design a new shell and remodel the interior to bring up to date a competitive banking image.

In order to accomplish this Waggoner and Associates, Inc.,

studied the relationship of the "downtown" banking traffic and came up with two major axis. One on Main Street at the corner and another across the street on 3rd Street from a six story office building. The architects did away with the large glass block windows on the ground level and the steel casement windows on the second floor.

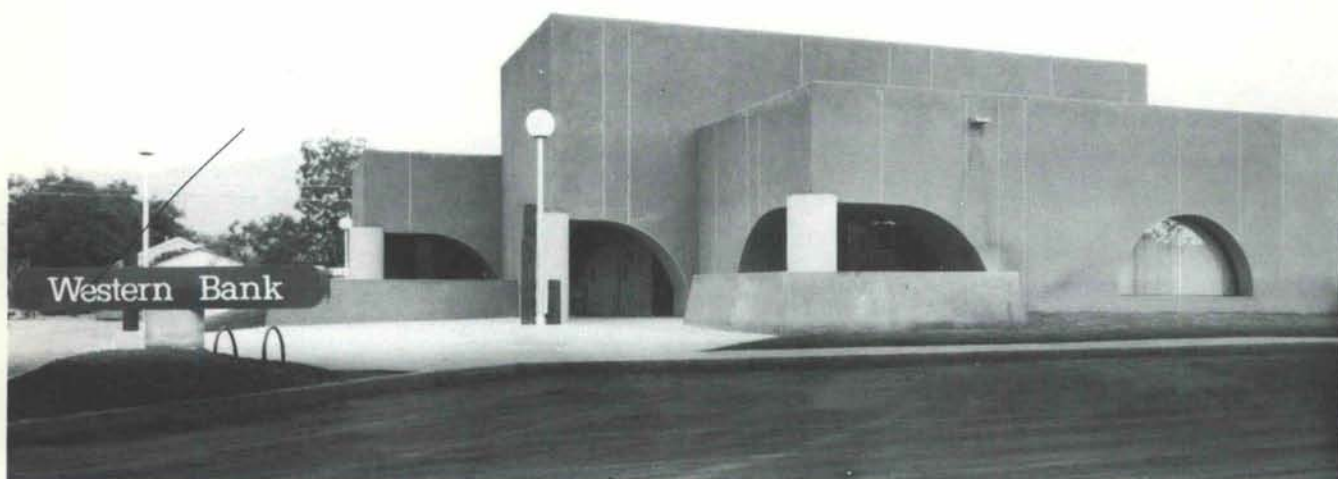
The final design emphasized the entries by means of semi-circular, highly detailed brick arches which are intersected by masts of contrasting white stucco trimmed in the same brick.

Around the northeast corner of the building a planter was built to emphasize the high buckskin brown stucco walls. This planter is also used by the people as a seating area. This is

a continuation of an old city tradition for this corner.

The stucco was "panelized" by means of oversized expansion joint reveals painted to match the chocolate brown brick trim. The masts not only serve as an architectural feature but also hold the building's signage.

Design and Construction Credits:
Waggoner and Associates, Architects
DeShurley Construction, General Contractor
Burnworth-Coll, Mechanical Contractor
Arco Electric, Electrical Contractor
L. C. Stiles, Stucco Contractor
Bostick Co., Masonry Contractor
Glenn Riley, Tile Contractor
Rhoads Plumbing Co., Plumbing Contractor
Custom Wood, Doors



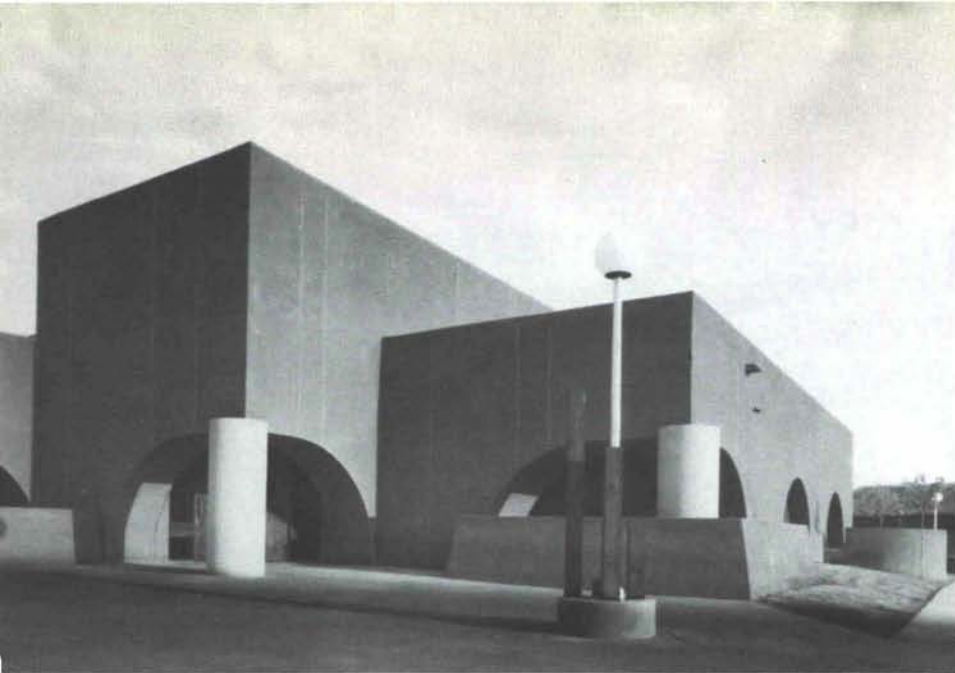
WESTERN BANK, Alamogordo, New Mexico

Western Bank completed in 1978 will provide full banking walk-in and drive-up services to Alamogordo, New Mexico.

The building's massing, deeply recessed arched windows and entries, planters, and rich brown stucco finish all serve to create a contemporary southwestern "image" consistent with the bank's construction philosophy and complimentary to the surrounding region.

The utilization of volume, natural light through arched clerestory windows, light reflectance, sculptural task lighting forms, cedar walls and ceiling surfaces, in conjunction with accent green fabrics and oak furnishings, all combine to achieve an image of lightness, volume and warmth complimentary to a southwestern desert environment.





Design and Construction Credits:
 Architect: Dean & Hunt Associates,
 Ltd., Albuquerque, N. M.
 Mechanical Engineer: Walker-Brown
 Engineers, Inc.
 Electrical Engineer: Uhl & Lopez En-
 gineers, Inc.
 Structural Engineer: Randy Holt &
 Associates
 General Contractor: Mesa & Associates

Excavating: Connie Danley Const.
 Concrete: Danley Concrete
 Electrical: Southwestern Electrical
 Plumbing/HVAC: Lane Plumbing &
 Htg.
 Lumber: Foxworth & Galbreth & Cash-
 way
 Drywall: O'Hara Drywall
 Stucco: Juan Limon
 Glazing: Glass House
 Painting: Payne Painting
 Roofing: Frontier Roofing
 Millwork: Southwest Millwork
 Landscaping: Flinn Nursery
 Furniture & Draperies: The Inkwell
 Carpeting: Sheffield Carpet
 Bank Equipment: LeFebure
 Interior Plants: Plant Patch
 Photography: Jerry Goffe

RIO GRANDE VALLEY BANK, Albuquerque, New Mexico

BRANCH OFFICE

ELDORADO BRANCH

Rio Grande Valley Bank is a local financial institution. The clients wanted a simple, contemporary design. The program required banking and office space with growth potential readily available. All areas not initially occupied by the bank are designed as lease spaces. Half of the floor has been developed into offices for a real estate firm.

All fixed elements, chases and toilet facilities are centrally located to provide the greatest flexibility of space. The fixed elements together with a centrally located atrium separate the bank from the adjacent lease space. All public areas have surface finished material such as vinyl wall covering and quarry tile floors with carpet in private offices and work areas. Warm-tone stucco is used over all exposed structural frame with concrete slab on grade and steel joist metal deck roof system. Exterior walls are 1" insulated reflective glass with an exposed aggregate stucco facia. Heating, ventilating and air conditioning is provided by multizone roof top units. Landscaping and interior furnishings were handled in separate contracts under the guidance of the architects to produce a uniform design. The construction was a negotiated contract, with the Owner, Contractor and Architect working during construction to maintain the budget limitations.

Design and Construction Credits:
Architects, Stevens, Mallory,
Pearl & Campbell, Albuquerque, N.M.
General Contractor, Neil Weaver Con-
struction Co.
Steel, W & W Steel
Bank Equipment, Mosler
Precast Concrete, Prestressed Concrete
Products
Glass & Glazing, Southwest Glass
Electric, Norman Johnson Service Elec-
tric
Plumbing, Mechanical, Rocky Mountain
Plumbing
Roofing, Goodrich Roofing Co.



MAIN OFFICE



Rio Grande Valley Bank is a small, local, financial institution that has experienced remarkable growth in the past two years and outgrew the temporary quarters they were located in. The clients wanted a simple, contemporary design that would lend itself to the redevelopment of downtown Albuquerque. The program required banking and main office space with growth potential readily available. All areas not initially occupied by the bank are designed as flexible lease

spaces. Half of the upper floor has been developed into law offices for the Chairman of the Board with the board room jointly serving the bank as well as the attorney.

All fixed elements such as stairs, elevator, chases and toilet facilities are centrally located to provide the greatest flexibility of space. All public areas have surface finish material such as vinyl wall covering and quarry tile floors with carpet in private offices and work areas. Warmtone concrete

is used in all exposed structural frame with precast double tee floor and roof system. Exterior walls are 1" insulated reflective glass and precast exposed aggregate facia panels. Heating, ventilating and air conditioning is provided by multizone roof top units. Landscaping and interior furnishing were handled in separate contracts under the guidance of the architects to produce a unified design. The construction was a negotiated contract, with the Owner, Contractor and Architect working during construction to maintain the budget limitations. Final cost excluding furnishings and landscaping was \$1,150,000 for \$37./sq. ft.

Design and Construction Credits:

Architect, Stevens, Mallory, Pearl & Campbell, Albuquerque, N. M.
General Contractor, Bradbury & Stamm Steel, W & W Steel
Sheetmetal, Miller Metal
Precast Concrete, Prestressed Concrete Products
Glass & Glazing, Central Glass & Mirror Electric, BoMur Electric
Plumbing, Bonded Plumbing & Heating
Bank Equipment, Mosler
Elevator, Dover Elevator Co.



ALBUQUERQUE GRAVEL PRODUCTS COMPANY

*DEDICATED TO QUALITY
AND SERVICE*

Tel. (505) 242-5265

600 John Street, S.E. P. O. Box 829

Albuquerque, N. M. 87103



BUILDERS BLOCK

Members:
New Mexico Concrete
Masonry Association
National Concrete
Masonry Association

**Quality Concrete Masonry Products
and many allied building materials.
Serving New Mexico and West Texas
for over a quarter of a century.**

P.O. Box 1633
Roswell, NM 88201
505/622-1321

P.O. Drawer FF
Las Cruces, NM 88001
505/524-3633

Telephone
El Paso
915/532-9695

new mexico architecture

nma

Published bi-monthly by New Mexico Society of Architects, American Institute of Architects, a non-profit organization. Editorial Correspondence should be addressed to John P. Conron, Box 935, Santa Fe, N.M. 87501. (505) 983-6948.

Advertising: Send requests for rates and information to New Mexico Architecture, John P. Conron, FAIA FASID, P. O. Box 935, Santa Fe, N.M. 87501. (505) 983-6948.



**We've always
been in the
bonding
business.
... NOW,
we're stronger!**

We are pleased to announce
an addition to our staff:

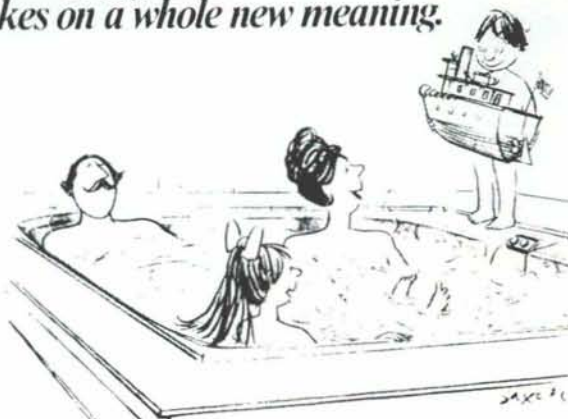
**MAX IMMENSCHUH, Bonding Manager
and Assistant Vice President**

Max has thorough knowledge of fidelity and surety bonding, with more than twenty-five years experience. He is well acquainted with this area, through his former association, and looks forward to serving all of you in his new position. For all of your bonding requirements, give us a call.

**Marsh &
McLennan**
OF NEW MEXICO

40 First Plaza, Suite 60 / Albuquerque, New Mexico 87102 / Phone 243-6616

***Being in hot water
takes on a whole new meaning.***



Plasco, Inc.
2508 Monroe N.E.
Albuquerque, New Mexico 87110
505-256-9883

Jacuzzi
WHIRLPOOL BATH
Without this trademark
it's not a Jacuzzi Whirlpool Bath

**INDEX OF FIRMS who make possible the publication of NMA
and the page upon which their message may be found:**

Albuquerque Gravel Products	13
Aztec Tile and Carpet	5
Albuquerque Testing Laboratory	4
American Business Interiors	15
Builders Block	14
Crego Block Co.	2
Featherlite Block Co.	15
Hydro Conduit Corporation	16
Kohler	Insert
Lath and Plaster Supply Co., Inc.	4
McGill Stephens Trus Joist Corp.	5
Mason Contractors Assn. of N. M.	6
Marsh & McLennan of N. M.	14
New Mexico Marble & Tile, Inc.	15
New Mexico Paint Mfg. Corp.	15
Plasco, Inc.	14
Plastic Supply & Fabrication	4
Stanley Structures	Center Spread
Stryco Sales, Inc.	4

HAVE YOU USED S-G II LATELY? A GREAT NEW PRODUCT. LET US PROVE IT.

NEW SPECTRA-GLAZE II
satin-gloss masonry units
are **AMAZINGLY EASY**
TO CLEAN DOWN, CLEAN
AND KEEP CLEAN!



- ☐ Build & finish in one operation. Thru-wall, load-bearing units eliminate expense of back-up wall.
- ☐ Permanent, sanitary, factory finish. Low maintenance. No refurbishing ever!
- ☐ Cannot peel or blister. Impervious to moisture, even steam cleaning.
- ☐ Resistant to chemicals—acids, bases, petro-chemicals, etc.
- ☐ Meets Fed. Spec. SS-C-621b for pre-faced, concrete masonry units.
- ☐ Excellent U-Factors. ☐ Job-site delivery.
- ☐ Plain, sculptured & design faces. 48 standard colors. ☐ 4.4/bu in SWEET'S.



® Reg. U.S. Pat. Off., Canada and other countries by THE BURNS & RUSSELL CO.,

YOU SAVE WITH *Spectra-Glaze II* STRUCTURAL GLAZED CONCRETE BLOCK WALLS

FEATHERLITE BLOCK CO., Box 489, Lubbock, TX 79408

806/763-8202

FEATHERLITE BUILDING PRODUCTS CO., Box 9977, El Paso, TX 79990

915/859-9171

CREGO BLOCK CO., INC., 6026 2nd St. NW, Albuquerque NM 87107

505/344-3475

Steelcote®

offering the widest selection of items with-
in these categories of any coatings com-
pany in the Country:

Wall Coatings • Anti-Corrosive Coatings
Industrial Coatings • Floor Materials
Sealants & Adhesives • Exterior Wall &
Roof Coatings • Architectural Paints &
Surface Preparations

for complete catalog and additional informa-
tion contact your New Mexico distributor

NEW MEXICO PAINT



MANUFACTURING CORPORATION
since 1949

209 San Mateo NE • Alb., NM 87108
505/255-2600

Coatings for Industry



Marble Quarry Tile Monarch Tile Terrazzo Floors Dex O Tex Floors

New Mexico Marble & Tile Inc.

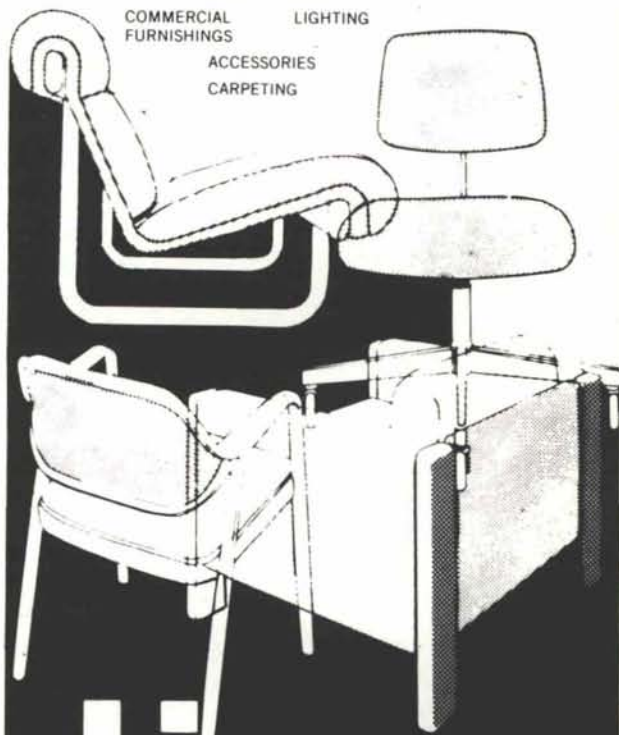
2500 2nd SW
P.O. Box 25566

Albuquerque, NM 87125
(505) 243-1771

763 Cerrillos Rd.
Santa Fe, NM 87501
(800) 432-8655

PROFESSIONAL
DESIGN SERVICE
COMMERCIAL
FURNISHINGS
ACCESSORIES
CARPETING

LANDSCAPE
SYSTEMS
LIGHTING

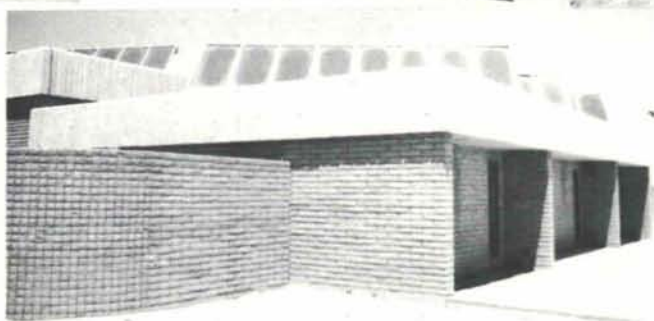


american
business
interiors

612 CENTRAL S.W.
PH 883-2055

Bulk Rate
U. S. Postage
PAID
Roswell, N. M.
Permit No. 47

Vol., 21, No. 4



LOS ESTEROS DAM (NEAR SANTA ROSA)

This monumental engineering project had several buildings and structures which included 488 pieces of precast and prestressed concrete totalling 1313 tons. Textured architectural panels were used extensively on several of the buildings and bridge railings to harmonize with the surrounding environment.

Owner-Engineer: Corps of Engineers, Albuquerque District

Consultant Engineer: Gordon Herkenhoff & Assoc.

Contractor: Kent Nowlin Construction Co.



HYDRO CONDUIT CORPORATION

2800 SECOND STREET, SW

PHONE 247-3726

ALBUQUERQUE, NEW MEXICO 87103