

fine Arts

1A

4

9

2

new mexico architecture

march-april 1977

\$1.00

SERIALS DEPT.

MAR 20 '77

ZIMMERMAN LIBRARY

1977

Roster

New Mexico Society
of Architects—AIA

&

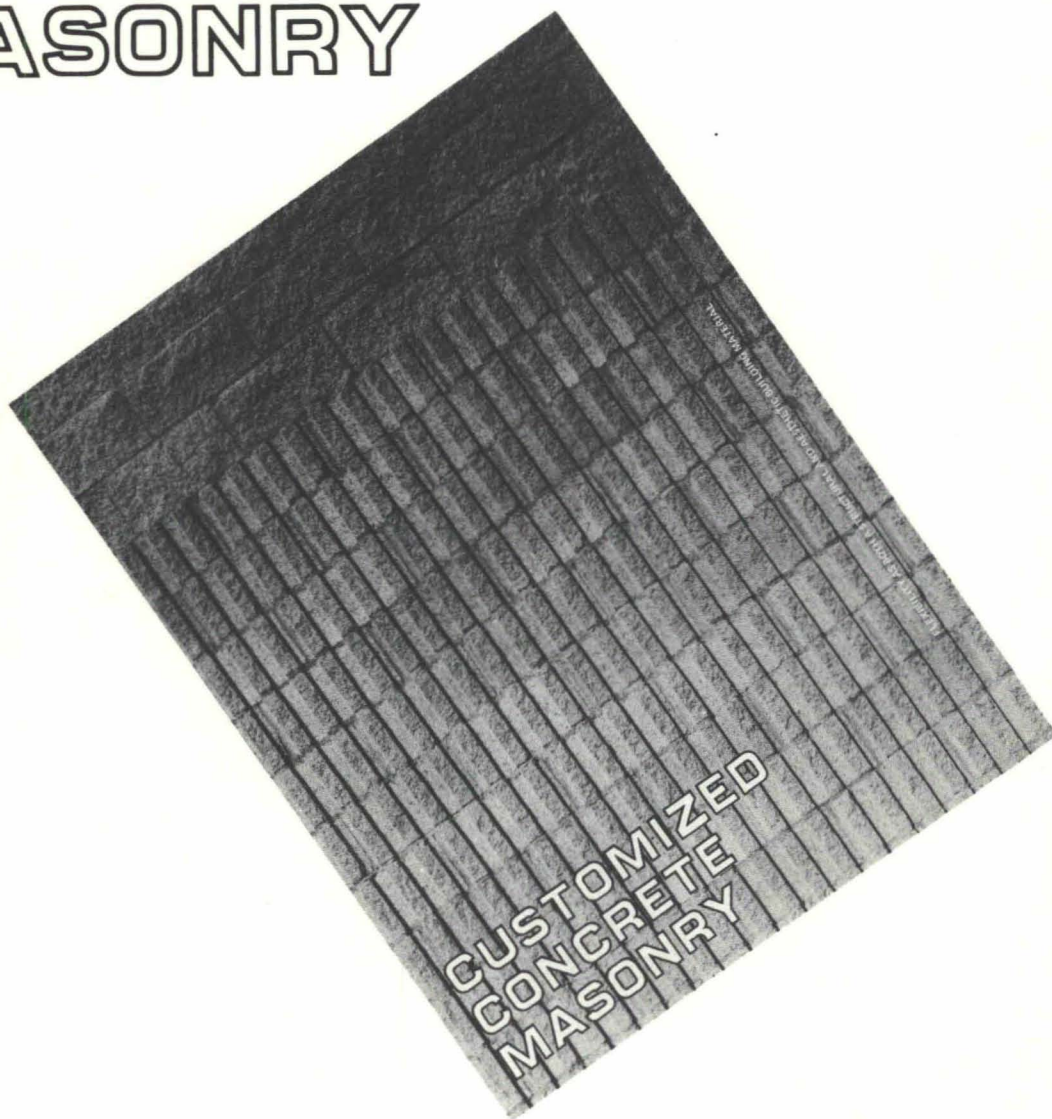
New Mexico Chapter
American Society of
Interior Designers—ASID



THE MUSEUM AT FORT SELDEN..... Pacheco and Graham, Architects

**HAVE YOU RECEIVED YOUR COPY OF
OUR LATEST 16 PAGE BROCHURE?**

CUSTOMIZED CONCRETE MASONRY

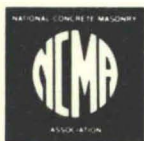


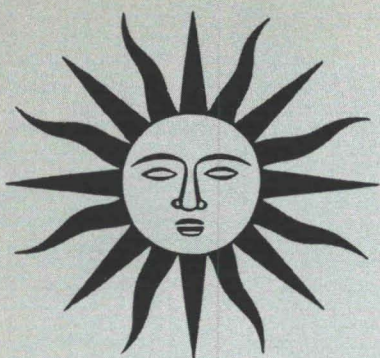
IF NOT, PLEASE CALL COLLECT...

CREGO BLOCK COMPANY

(505) 344-3475

**6026 SECOND STREET, N.W.
ALBUQUERQUE,
NEW MEXICO 87107**





vol. 19 no 2.

IN THIS ISSUE:

As a service to our readers we print a complete roster of the members of the New Mexico Society of Architects, American Institute of Architects, and the New Mexico Chapter, American Society of Interior Designers.

Realizing the need to create a building that does not intrude upon the historic monument for which it must serve as visitors center and museum, Pacheco and Graham, Architects have designed a handsome and serviceable structure for Fort Selden State Monument. For its successful design the architects received an award from the New Mexico Cultural Properties Review Committee.

The February-March 1977 issue of *Symposia* published the winners in the Colorado Society of Architects 1976 Design Awards program. One of the awards was given "in recognition of effort and time devoted in preservation of our architectural heritage. It has been said that we can have no future if we have no roots in the past—with this in mind—the Colorado Society is pleased to present this special award" for the reconstruction of Bent's Fort. It is not a "preservation" project at all, but rather a complete rebuilding of a long gone structure; only foundation remnants were extant on the site. The documentation upon which the reconstruction was based is, I am sure, sound and thorough. It is, none the less, a very costly expenditure of tax funds to create a clean, new stage set for tourists, when all about us existing historical structures are being neglected and too often destroyed due to a lack of funds. Unless we place these tax funds into the actual preservation of the historic architecture we still possess, the only "roots in the past" we will have will be the ersatz roots of reconstructed history. J. P. C.

nma

march-april 1977 • new mexico architecture

Leave Back of Garage and Turn Left 8
—a pictorial footnote

1977 Roster—New Mexico Society of Architects 11

1977 Roster—New Mexico Chapter
American Society of Interior Designers 14

A Small Museum at Fort Selden 15
—Pacheco and Graham, Architects

NMA News 18
—New Mexico Arts Commission Awards
—Schlegel Named to NAAB
—Ilfeld Building

Letters 19

Its All Happened Before Department 19

Index to Advertisers 22

(Cover—from *THE TRIUMPH OF MAXIMILIAN I*—Burgkmair)

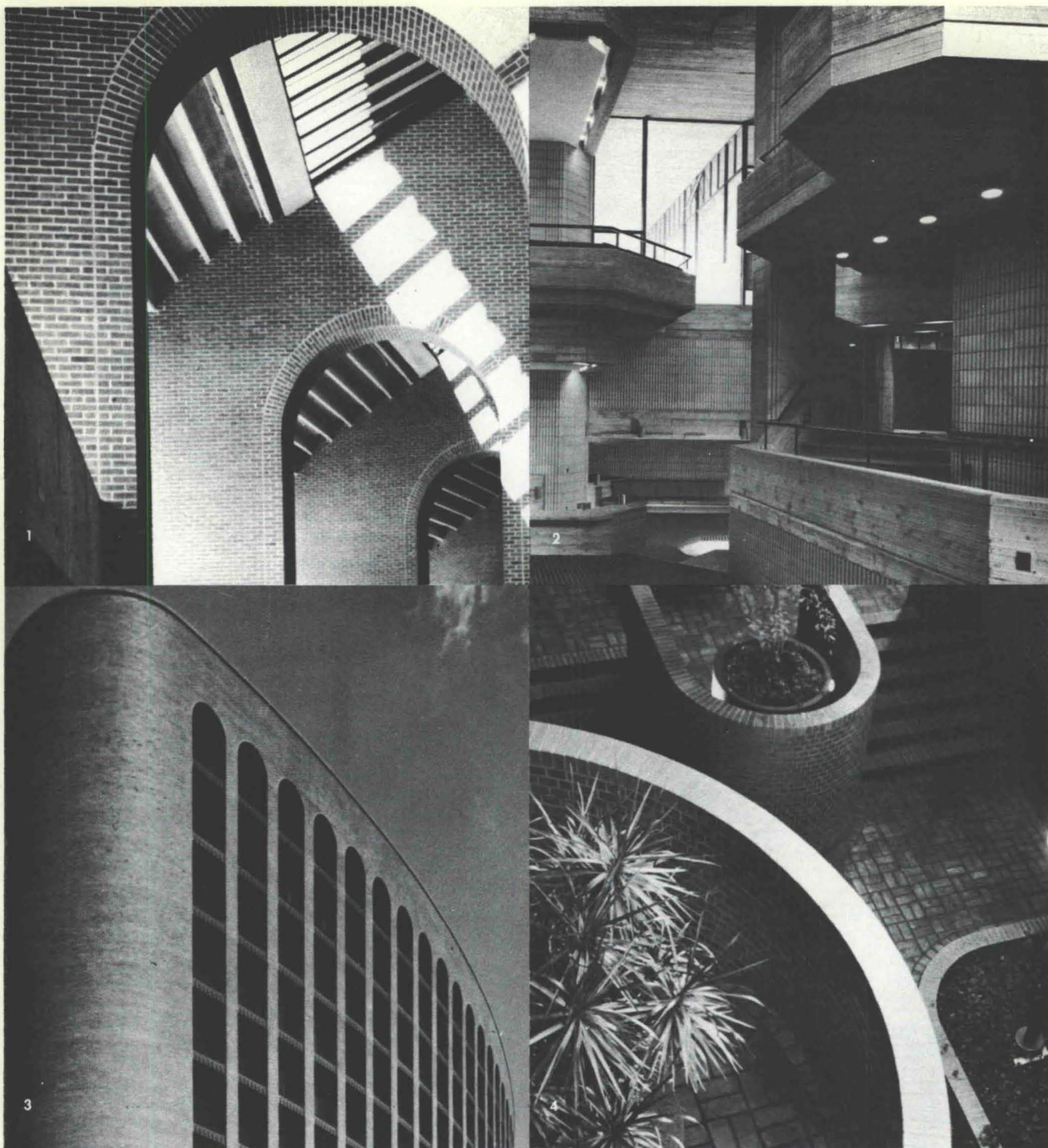
—Official Publication of the New Mexico Society of Architects, A. I. A.—

Society Officers

President—George C. Owen
Vice President—Kern Smith
Secretary-Treasurer—John C. Bland
Director—Earl P. Wood
Director—Donna Quasthoff
Director—Randall L. Kilmer
Director—Ron Hutchinson
Director—William Buckley
Director—Wilbur T. Harris
Director—Channell Graham
Director—Edwin C. French
Director—Robert J. Strader
Director—Robert C. Campbell

Commission for NMA

John P. Conron, FAIA/FASID—Editor
Ronald K. Hill—Associate Editor
Bainbridge Bunting—Editorial Consultant
Mildred Brittle—Accounting
and Circulation
John W. McHugh
Sam Pool

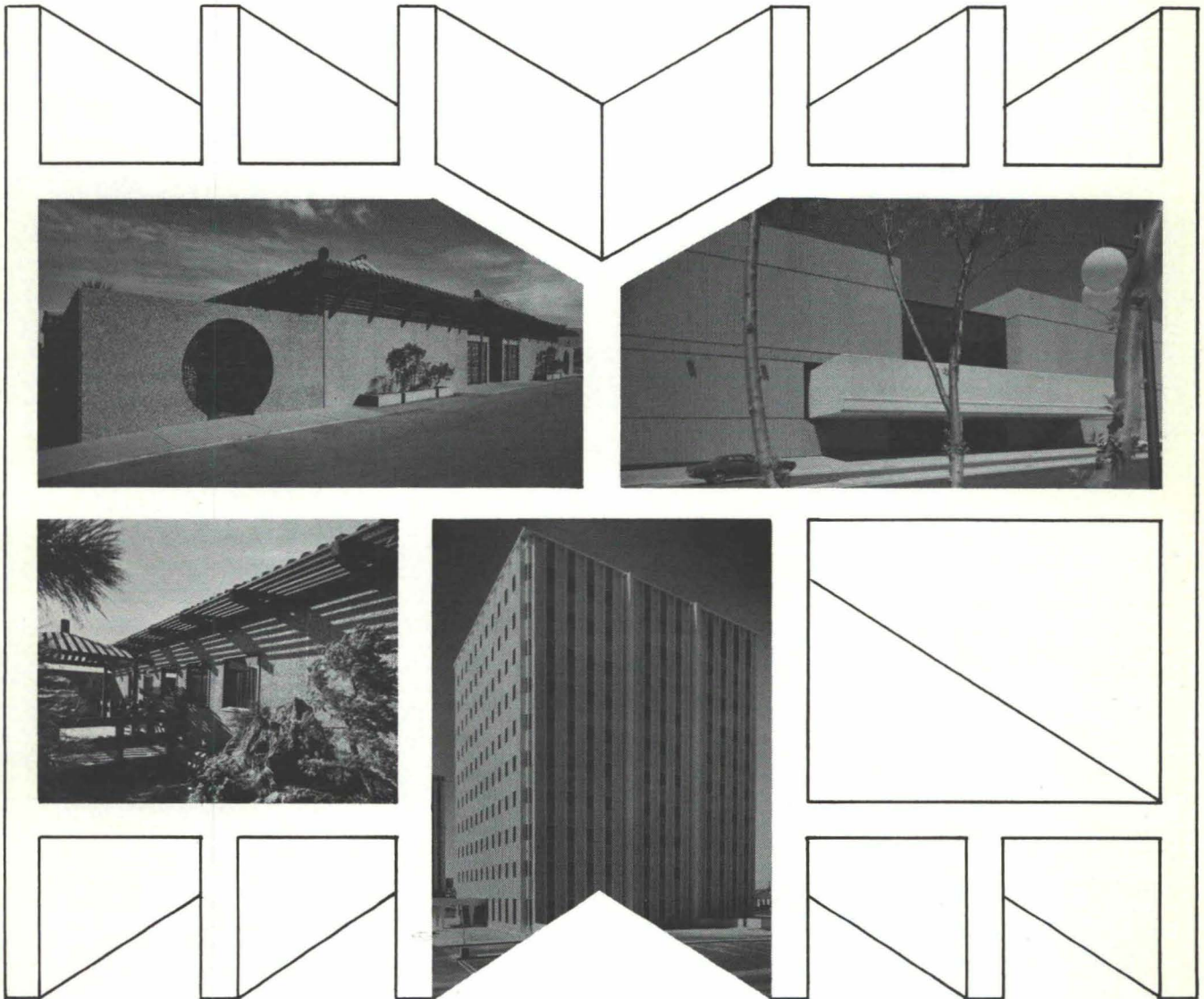


1. Richmond Coliseum, Richmond, Virginia. Architects: Vincent G. Kling & Partners. Photo courtesy Brick Institute of America. 2. Southeastern Massachusetts University, Arts and Humanities Building, North Dartmouth. Associated Architects: Desmond & Lord, Inc., and Paul Rudolph, FAIA. Interior Consultant: Bill Bagnall Associates, Inc. 3. Public Service Alliance of Canada Building, Ottawa. Architects: Schoeler Heaton Harvor Menendez Associated Architects. Photo courtesy Brick Institute of America. 4. Executive Headquarters and Nassau Center Office, Hempstead Bank, Garden City, Long Island. Architects: Bentel & Bentel, AIA.

**RUMORS THAT THERE ARE
BUILDING SYSTEMS MORE VERSATILE THAN MASONRY
ARE TOTALLY WITHOUT FOUNDATION.
MASONRY CONTRACTORS ASSOCIATION
OF NEW MEXICO**

A commitment to quality.

TOTAL VERSATILITY IN PRECAST CONCRETE



NEW CHINA TOWN RESTAURANT
YUM KEE FU - AIA ARCHITECT
JAYNES CORP. - CONTRACTOR
McCORNACK & BURNS - ENGINEER

ALBUQUERQUE CONVENTION CENTER
FLATOW - MOORE, BRYAN & ASSOC. - ARCHITECTS
EUGENE ZWOYER - STRUCTURAL ENGINEER
LEMBKE CONSTRUCTION CO. - CONTRACTOR

TWO PARK PLAZA OFFICE BUILDING
JERRY TORR & ASSOC. - ARCHITECTS
RANDY HOLT & ASSOC. - STRUCTURAL ENGINEER
GEORGE A. RUTHERFORD, INC. - CONTRACTOR

Stanley Structures produces and erects a full range of precast products for apartments, offices, warehouses, commercial and industrial buildings, including walls, floors and roofs. These products include twin tees, flat slabs, girders, beams, columns, stairs and wall panels.



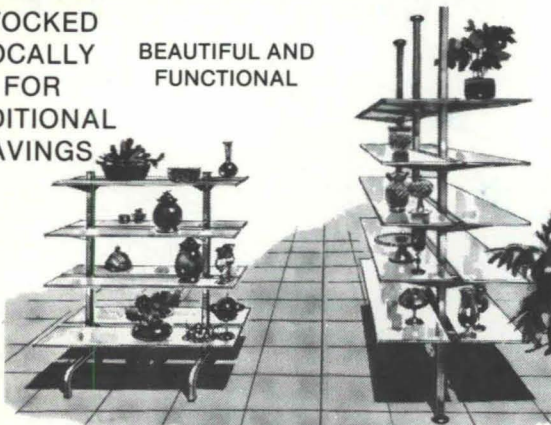
Stanley Structures
1304 Menaul, N. E.
P.O. Box 3855
Albuquerque, New Mexico 87110
(505) 345-5671

NEW COMMERCIAL BUILDINGS DESERVE

Reeve METAL STORE FIXTURES & HARDWARE

STOCKED
LOCALLY
FOR
ADDITIONAL
SAVINGS

BEAUTIFUL AND
FUNCTIONAL



A FEW OF THE FINE STORES USING REEVE FIXTURES

STROMBERGS
HENRY'S
SWITZERS
GIFTS UNUSUAL

GILBERTS
SIGNATURE J
PETER POLLY'S
DAN'S BOOTS & SADDLES

JUDD'S JEWELRY
TOYS BY ROY
COMMUNITY DRUG

SEE OUR SHOW ROOM OR SEND FOR
FREE COLOR CATALOG

Serving New Mexico Since 1955

CUSTOMCRAFT FIXTURES

4914 PAN AMERICAN FREEWAY
ALBUQUERQUE, NM 87109

881-9200



MEMBER NATIONAL ASSOCIATION OF STORE FIXTURE MANUFACTURES

YOU SAVE WITH NEW

Spectra-Glaze II

GLAZED BLOCK WALLS

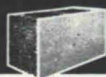
CONSTRUCTION — Build and finish in one operation
... walls go up faster — one trade, large units lay
up fast ... thru-wall load bearing units eliminate
expense of back up wall.

MAINTENANCE — No refurbishing ever. Permanent,
sanitary, factory finish — cannot peel or blister ...
easy to clean and keep clean.

ENERGY — Excellent U-factors with lightweight block
and insulating granular fill.

INSURANCE — Maximum security and protection at
lowest cost, with fire-rated walls.

GOV'T REQUIREMENTS — Meet USDA and OSHA
specifications for health, sanitation and safety.



© U.S. Pat. Off., Can. & other countries by THE BURNS & RUSSELL CO.

FEATHERLITE BLOCK CO., Box 489, Lubbock, Tex. 79408, 806/763-8202
FEATHERLITE BUILDING PRODUCTS CO., Box 9977, El Paso, Tex. 79990
CREGO BLOCK COMPANY, INC., 6026 Second St. N.W., Albuquerque, N.M.
505/344-3475

YOU SAVE TIME/YOU SAVE MONEY
WITH THE ECONOMY OF BLOCK & THE PERFORMANCE OF GLAZE



Ahead of schedule. Because we were behind them.

Brooks and Clay, Inc. served as general contractors for Albuquerque's Mound Terrace Office Complex. They used Trus Joist components for the structural system designed by Dean & Hunt Associates, architects. Here's what Robert W. Brooks told us later:

"We would like to compliment your organization and the Trus Joist Co. for the way the joist system was handled ... The easy application and quick delivery time has our Company well ahead of schedule."

It figures. Trus Joists are built for speed. For labor savings. For optimum strength. Give us a call and find out for yourself.

In Albuquerque, call
McGill Stephens, Inc.,
Suite LL6, Citizens Bank
Bldg., 2500 Louisiana Blvd.,
N.E., Albuquerque 87110,
Phone 505/292-3366

In El Paso, call
McGill Stephens, Inc.,
4100 Rio Bravo St.,
Suite 320, El Paso 79902,
Phone 915/544-4505

Trus Joist structural roof and floor systems distributed by McGill Stephens, Inc., Albuquerque and El Paso.

Nothing we say about our tile
can tell you as much as this photo.



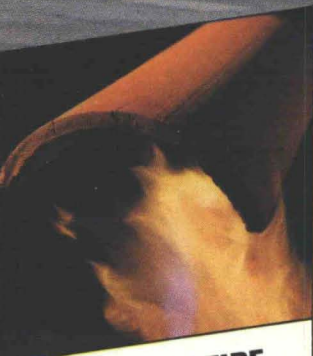
Take another photo in 10 years
and it'll be even more beautiful.

We could describe what goes into San Vallé genuine clay tile—the ingredients and the process—and explain how well it insulates and protects.

But you choose a roofing material primarily on the basis of aesthetics. And that's where San Vallé tile's *permanent* beauty becomes a deciding factor.

You wouldn't settle for a poor substitute. Would you?

If it isn't clay...it isn't tile.



THE TEST OF FIRE

San Vallé clay tile is fired at approximately 1900°F, is non-flammable providing protection against fire storms, burning brands and direct flame.

Untreated wood shingles have an ignition point of less than 400°F*.

*Source:
National Fire Protection Association.

San Vallé TILE
KILNS
Since 1898

Photo: Residence, Los Angeles, California
Designer: Del Dideriksen

1717 No. Highland Avenue, Los Angeles, California 90028 ■ (213) 464-7289
THE NATION'S LARGEST PRODUCER OF GENUINE CLAY ROOFING PRODUCTS.
DISTRIBUTORS THROUGHOUT THE SOUTHWEST FOR GLADDING, McBEAN
GENUINE CLAY BARREL TILE AND INTERLOCKING SHINGLES.

Leave The Back Of The Garage And Turn Left

———A pictorial footnote!

By John DeWitt McKee & Spencer Wilson

"Leave the Back of the Garage and Turn Left" appeared in the November/December 1975 issue of NMA. These early photographs have recently been uncovered and are published here as a continuation of that article.

In 1915 Mr. and Mrs. James A. Graham lived in Datil, New Mexico. In 1916 they moved to Quemado to operate the Ocean to Ocean Garage and the adjacent hotel. By 1918 the new town of Quemado, or "upper Quemado", was under construction.

Photos courtesy of Claude R. Graham of Quemado and Socorro, N. M.



The Grahams

The Garage—gasoline barrels in the foreground.





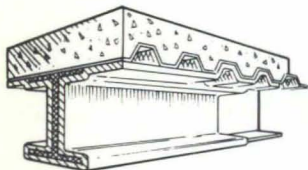
Datil Brothers hotel

New Quemado a-building



MATERIALS and DESIGNS...

.....in brief



ZONOLITE[®] MONOKOTE[®] FIREPROOFING

The function of MONOKOTE is to provide structural protection for buildings in the event of fire. It is the most widely used structural steel fireproofing in North America. MONOKOTE was developed specifically for fast spray application, reliability and low cost.



ZONOLITE[®] MASONRY INSULATION

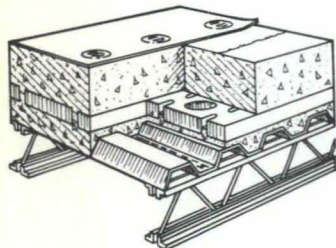
ZONOLITE Masonry Insulation is a lightweight, free-flowing, granular vermiculite which is specially treated for water repellency. When poured into cores and cavities of masonry walls, ZONOLITE Masonry Insulation forms a uniform, non-settling barrier against the transmission of heat, sound and moisture. It is inorganic, will not rot, emit odors, attract vermin, or support combustion.

ZONOLITE[®] THERMO-STUD[®] WALL INSULATION SYSTEM

Combines the fine insulating properties of ZONOLITE Styrene Foam with a new THERMO-STUD channel for positive mechanical attachment of the foam to masonry walls. Gypsum drywall or other finishing materials can then be readily attached to the metal furring channel. Result? Significant dollar savings in both construction and operating costs.



ZONOLITE[®] ROOF DECKS



A completely engineered and tested roof insulation system designed to take full advantage of the insulating value, fire resistance and strength of vermiculite lightweight concrete. This versatile, high performance material is combined with other components to serve as roof insulation, roofing substrate, fire-resistant barrier and gradient fill.



SOLICO

NEW

WAYS

TO BUILD

AND GROW

SOUTHWEST VERMICULITE COMPANY, INC., BOX 6302, ALBUQUERQUE, N.M. 87107

® ZONOLITE, MONOKOTE, and THERMO-STUD are U.S. Reg. Trademarks of W. R. Grace & Co.

AIA--1977--AIA

The New Mexico Society of Architects

OF THE AMERICAN INSTITUTE OF ARCHITECTS

President.....	George C. Owen	Director.....	William Buckley
Vice-President.....	Kern Smith	Director.....	Wilbur T. Harris
Sec.-Treas.....	John C. Bland	Director.....	Channell Graham
Director.....	Earl P. Wood	Director.....	Edwin C. French
Director.....	Donna Quasthoff	Director.....	Robert J. Strader
Director.....	Randall L. Kilmer	Director.....	Robert C. Campbell
Director.....	Ron Hutchinson		

ALBUQUERQUE CHAPTER A.I.A.

President.....	Channell Graham	Director.....	William L. Burns
President-Elect.....	Dale L. Crawford	Director.....	Loren E. Mastin
Secretary.....	Joseph Della Longa	Director.....	Wallace A. Wendell
Treasurer.....	William E. Burk, III		

Fellow

Flatow, Max
5608 Zuni, S.E.
Albuquerque 87108
268-6783

Corporate Members

Andrews, Wayne G.
5608 Zuni, S.E.
Albuquerque 87108
268-6783

Antonaides, Anthony C.
Department of Architecture
Univ. of Texas at Arlington
Arlington, Texas 79110

Armstrong, Robert F.
3705 Westerfield Drive, N.E.
Albuquerque 87111
294-8388

Barker, Hildreth L.
8338-B Comanche Rd., N.E.
Albuquerque 87111
296-4886

Benson, Harold R.
P. O. Box 156
Taos 87517
758-2864

Bland, John C.
210 LaVeta, N.E.
Albuquerque 87108
255-4864

Boehning, Joseph F.
2005 Carlisle Blvd., N.E.
Albuquerque 87110
268-8785

Bol, Andrew
8338-B Comanche Rd., N.E.
Albuquerque 87110
296-4886

Bolling, George H.
4101 Delmar, N.E.
Albuquerque 87110
883-2600

Brittelle, W. Miles, Jr.
2601 Wyoming, N.E.
Albuquerque 87112
294-4988

Brown, Glynn
1330 Louisiana, N.E.
Albuquerque 87110
265-8221

Bryan, Garlan D.
5608 Zuni, S.E.
Albuquerque 87108
268-6783

Buckley, William
3305 Campus Blvd., N.E.
Albuquerque 87106
255-9196

Burk, Christiana
P. O. Box 4506
Albuquerque 87106
255-7537

Burk, William E. III
P. O. Box 4506
Albuquerque 87106
255-7537

Burns, William L.
8100 Mountain Road Pl., N.E.
Albuquerque 87110
265-3646

Burwinkle, Joseph B., Jr.
3209 Silver Ave., S.E.
Albuquerque 87106
268-9987

Campbell, C. Robert
115 Amherst Dr., S.E.
Albuquerque 87106
255-8668

Campbell, Douglas A.
3500 Indian School Rd., N.E.
Albuquerque 87106
266-5521

Castillo, Guadalupe
Post Office Box 699
Bernalillo 87004
842-0755

Cohlmeyer, Robert C.
8 Tumbleweed, N.W.
Albuquerque 87120
898-4641

Coppedge, Michael
335 Jefferson, S.E.
Albuquerque 87108
268-9212

Crawford, Dale L.
117 Jefferson, N.E.
Albuquerque 87108
265-0986

Dekker, Arthur W.
2609 Quincy, N.E.
Albuquerque 87110
256-3308

de la Torre, Jorge M.
P. O. Box 3325
Albuquerque 87110

Della Longa, Joseph A.
13532 Cedarbrook, N.E.
Albuquerque 87111
294-8533

Del Mastro, Michael
P. O. Box 803
Albuquerque 87103
243-4559

Dick, Deryl E.
3817 Delmar Ave., N.E.
Albuquerque 87110
881-6423

Dysart, Cabot
Post Office Box 1067
Corrales 87048
898-6629

Fackelman, Thomas A.
5608 Zuni, S.E.
Albuquerque 87108
268-6783

Fanning, H. William
4100-F Silver Avenue, S.E.
Albuquerque 87108
266-5874

Fernandez, Manuel A.
2720 Carlisle Blvd., N.E.
Albuquerque 87110
256-1427

Fletcher, Donald F.
103 Amherst, S.E.
Albuquerque 87106
265-7703

Fu, Yum Kee
500 17th Street, N.W.
Albuquerque 87104
243-5939

Garcia, Lawrence A.
1605 Carlisle Blvd., N.E.
Albuquerque 87110
255-7561

Gathman, Walter A.
203 Truman St., N.E.
Albuquerque 87108
265-8329

Giannini, Remo O.
6400 Uptown Blvd, N.E.,
Suite 510E, Albuquerque 87110
256-9864

Gilbert, Van
418 Tulane, S.E.
Albuquerque 87106
268-0280

Graham, Channell
807 Eighth Street N.W.
Albuquerque 87102
243-1721

Gunning, Donald G.
9908 Robin, N.E.
Albuquerque 87112
843-9587

Harrison, P. B., Jr.
333 East Main
Farmington 87401

Hesselden, Louis G.
P. O. Box 803
Albuquerque 87103
243-4559

Holmes, Jess T., Jr.
6400 Uptown Blvd., N.E.,
Suite 510E, Albuquerque 87110
256-9864

Hooker, Van Dorn
Box 18, UNM Station
Albuquerque 87131
277-2236

Hoppenfeld, Morton
School of Architecture &
Planning—UNM
2414 Central Ave., S.E.
Albuquerque 87131

Hoshour, Harvey S.
201 Coal Avenue, S.W.
Albuquerque 87102
843-6900

Hunt, Eugene L.
210 LaVeta, N.E.
Albuquerque 87108
255-4864

Hutchinson, Ron
601 San Pedro, N.E.
Albuquerque 87108
265-8452

Johnson, John J., IV
212 Dartmouth, N.E.
Albuquerque 87106
265-1611

Jones, Wendell L.
178 Calle Monte Aplanada, N.W.
Albuquerque 87120
831-6029

Kite, Chester
6712 Loftus, N.E.
Albuquerque 87109
294-0380

Krueger, Donald
1336 Wyoming Blvd., N.E.
Albuquerque 87112
293-7888

Krueger, Robert H.
Suite 1100
Bank of N.M. Building
Albuquerque 87102
842-8663

Lake, Gerald H.
601 San Pedro Dr., N.E.
Suite No. 105
Albuquerque 87108
265-8452

Long, Joseph D., Jr.
8009 Mountain Road Place, N.E.
Albuquerque 87110
265-5775

Mallory, Robert G.
115 Amherst Dr., S.E.
Albuquerque 87106
255-8668

Mason, G. Stanton
920 First St., N.W.
Albuquerque 87102
242-1107

Mastin, Loren E.
103 Amherst, S.E.
Albuquerque 87106
265-7703

McMurray, Pat
3939-B San Pedro, N.E.
Albuquerque 87110
883-7445

Miller, James
6717 Baker, N.E.
Albuquerque 87109
296-7763

Milner, Richard P.
113 Jefferson, N.E.
Albuquerque 87108
256-7126

Moore, Jason P.
5608 Zuni, S.E.
Albuquerque 87108
268-6783

Nance, McKinley
612 17th St., N.W.
Albuquerque 87104
243-7962

Pacheco, Jesse A., Jr.
807 Eighth Street, N.W.
Albuquerque 87104
243-1721

Pearl, George C.
115 Amherst Dr., S.E.
Albuquerque 87106
255-8668

Peters, Ronald L.
8100 Mountain Road Pl., N.E.
Albuquerque 87110
265-3646

Pogue, Ernest
601 San Pedro, N.E.
Albuquerque 87108
265-8452

Ponto, Robert C.
4055 Montgomery, N.E. B-7
Albuquerque 87109
881-8282

Predock, Antoine
300 12th Street, N.W.
Albuquerque 87102
243-6162

Ragsdale, Michael
P. O. Box 801
Los Alamos 87544

Rainhart, George R.
1012 Adams St., S.E.
Albuquerque 87108
268-1148

Reed, John B.
2620 San Mateo, N.E.
Albuquerque 87110
265-8505

Rocheleau, Robert L.
4125 Carlisle Blvd., N.E.
Albuquerque 87109
881-6336

Ross, Leon A., Jr.
5608 Zuni, S.E.
Albuquerque 87108
268-6783

Rowland, James N.
2403 San Mateo, N.E.
No. 9 Plaza
Albuquerque 87110
265-8378

Rupley, John D.
305 San Pedro, N.E.
Albuquerque 87108
266-2777

Sample, Jack
3939-B San Pedro, N.E.—No. 2
Albuquerque 87110
293-7576

Schlegel, Donald P.
1620 Central Ave., S.E.
Albuquerque 87106
247-8558

Shaffer, Donald M.
5608 Zuni, S.E.
Albuquerque 87108
268-6783

Shelton, Bill J.
335 Jefferson St., S.E.
Albuquerque 87108
255-9690

Stevens, Donald P.
115 Amherst Dr., S.E.
Albuquerque 87106
255-8668

Stout, M. Kent
457 Washington, S.E.
Albuquerque 87108
265-2335

Stubbs, Frank R.
P. O. Box 4111
Albuquerque 87106
266-4484

Surh, Benedict D.
P. O. Box 663
Farmington 87401
325-3202

Toohy, John E.
P. O. Box 663
Farmington 87401
325-3202

Varsa, John P.
903 Rio Grande Blvd., N.W.
Albuquerque 87104
242-5403

Volz, Charles W.
9424 Rio Grande Blvd., N.W.
Albuquerque 87114
898-0645

Waters, Bill J.
8009 Mountain Road Place, N.E.
Albuquerque 87110
265-5775

Weller, Louis L.
335 Jefferson Street, S.E.
Albuquerque 87108
255-9690

Wendell, Wallace A.
903 Rio Grande Blvd., N.W.
Albuquerque 87104
242-5403

Werner, David E.
2600 Yale, S.E.
Albuquerque 87106
842-9136

Willadsen, John C.
3013 Marble, N.E.
Albuquerque 87106
265-8668

Associate Members

Addy, Ervin III
35 Tennis Court, N.W.
Albuquerque 87120

Affholter, Lee P.
203 Truman, N.E.
Albuquerque 87108
265-8329

Bergman, Edna H.
324 Hermosa, S.E.
Albuquerque 87108

Blachut, Marie O.
1001 Los Arboles, N.W.
Albuquerque 87107
766-7422

Bloch, Teresita
505 Morningside, S.E.
Albuquerque 87106
265-0740

Boehning, A. W., Jr.
2005 Carlisle Blvd., N.E.
Albuquerque 87110
268-8785

Boyle, Jack C.
103 Amherst, S.E.
Albuquerque 87106
265-7703

Brown, James T.
12448 Towner, N.E.
Albuquerque 87112

Cheng-Guajardo, Mighel
6316 Christy, N.E.
Albuquerque 87109

Cornwell, Allan B.
1220 Fruit Ave., N.W.
Albuquerque 87102
242-6062

Custer, Philip E.
728 Val Verde, S.E.
Albuquerque 87108
255-9289

Darby, Annette M.
934 21st St., N.W.
Albuquerque 87104

Darby, Robert Paul
5212 Mesalero Road, N.E.
Albuquerque 87112
881-4764

Fellows, Glenn N.
103 Amherst, S.E.
Albuquerque 87106
265-7703

Fletcher, Tom C.
2609 Quincy, N.E.
Albuquerque 87110
256-3308

Fullmer, Carl
11624 Morenci, N.E.
Albuquerque 87112
299-5065

Hill, Ronald K.
311 Fontana Place, N.E.
Albuquerque 87110
265-5775

Hovey, Kenneth R.
124 Quincy, N.E.
Albuquerque 87108
266-5651

Hultzen, Peter J.
1205 Princeton, N.E.
Albuquerque 87106
266-3931

Joslin, Donald L.
10504 Constitution, N.E.
Albuquerque 87112

Keller, David P., Jr.
224 Spruce, N.E.
Albuquerque 87106

Kirchner, Richard C.
5327 Montgomery, N.E., No. 59
Albuquerque 87109
881-3130

Klas, Jeff
2005 Carlisle, N.E.
Albuquerque 87110
268-8785

Lorenz, Michael R.
8100 Mountain Road Pl., N.E.
Albuquerque 87110
265-3646

McKinney, Joe C.
608 17th Street, N.W.
Albuquerque 87104
242-4209

Moraga, Robert A.
626 Bryn Mawr, N.E.
Albuquerque 87106

Norris, Frank F.
1901 Avenida las Campanas, N.W.
Albuquerque 87107
344-0521

O'Brien, Ray
3607 San Pedro Drive, N.E.
Albuquerque 87110
881-8030

Ordóñez, Edward
8806 Woodland, N.E.
Albuquerque 87112
292-3348

Pearson, Daniel Lee
9401 Haines, N.E.
Albuquerque 87112
299-7810

Peters, Robert W.
4010-C Carlisle, N.E.
Albuquerque 87107

Richards, H. Scott
619 Bryn Mawr Dr., N.E.
Albuquerque 87106
268-3797

Richards, Patricia F.
927 Fairway, N.W.
Albuquerque 87107
344-1233

Richburg, Edward P.
2718 Rio Grande Blvd., N.W.
Albuquerque 87104
345-5150

Robinson, Leslie
2609 Quincy, N.E.
Albuquerque 87110
256-3308

Robson, Thomas E.
13408 Reo Road, N.E.
Albuquerque 87112
293-1853

Sarracino, Mario D.
7009 Gisele, N.E.
Albuquerque 87109

Schoeman, Thomas J.
2101-1 Coal Ave., S.E.
Albuquerque 87106

Scott, Richard C.
8009 Mountain Road Pl., N.E.
Albuquerque 87110
265-5775

Searcy, Ronald
8100 Mountain Road Pl., N.E.
Albuquerque 87110
265-3646

Shields, Lorn D.
11400 Mahlon, N.E.
Albuquerque 87112

Simmons, Joe E., Jr.
210 Montclair, S.E., No. 3
Albuquerque 87108

Sudbury, James C.
103 Amherst Dr., S.E.
Albuquerque 87106
265-7703

Weatherman, David
1224 12th St., N.W.
Albuquerque 87104

Weis, William L., Jr.
2609 Quincy, N.E.
Albuquerque 87110
256-3308

Whalin, William
6700 Orphelia, N.E.
Albuquerque 87109
821-1595

Professional Associate Members

Beltran, Michael, Jr.
2403 San Mateo, N.E.
No. 9 Plaza
Albuquerque 87110
265-8378

Blair, Kent
816 Palomas, N.E.
Albuquerque 87108
266-2650

Bloch, Anthony
505 Morningside, S.E.
Albuquerque 87108
265-0740

Bosl, Gordon E.
P. O. Box 435
Corrales 87048
898-3487

Day, Stephen C.
Post Office Box 1084
Albuquerque 87103
247-3147

Eeds, Sandy

103 Amherst Dr., S.E.
Albuquerque 87106
985-7703

Hooker, Marjorie M.

Post Office Box 10149
Alameda 87114
988-2624

Miller, Mark

807 Eighth, N.W.
Albuquerque 87104
243-1721

Preiser, Wolfgang F. E.

P. O. Box 1158
Albuquerque 87103
277-2903

Wood, Arthur L.

1315 Truman St., S.E.
Albuquerque 87108
255-2549

Members Emeritus**Popkin, Charles A.**

1701 Cardenas Dr., N.E.
Albuquerque 87110
256-1009

Springman, Raymond R.

4414 Avenida Del Sol, N.E.
Albuquerque 87110
268-9100

Honorary Member**Bunting, Bainbridge**

5021 Guadalupe Trail, N.W.
Albuquerque 87107
344-1140

SANTA FE CHAPTER A.I.A. Zip Code 87501

President.....Earl P. Wood

Director.....George C. Owen

Vice President.....Robert L. Nestor

Director.....Robert J. Strader, Jr.

Sec.-Treas.....Kestutis Germanas

Director.....Donna Quasthoff

Fellows**Clark, Kenneth S.**

208 Delgado
982-1951

Conron, John P.

P. O. Box 935
983-6948

Dorman, Richard L.,

934 Old Taos Highway
983-2664

Meem, John Gaw

P. O. Box 1924
983-6412

Corporate Members**Arrison, John B.**

208 Delgado
982-1951

Bicknell, Bruce M.

423 East Main Street
Farmington 87401
327-1056

Clark, Richard S.

107 Siringo Road
983-4992

Davis, Bruce

408 Camino Don Miguel
988-3774

Germanas, Kestutis

Route 4, Box 46
983-2396

Girard, Alexander H.

P. O. Box 2168
983-6759

Grenfell, Richard B.

Box 495, Tesuque 87574
988-5194

Hyatt, Foster H.

1579 Canyon Road
983-7422

Johnson, Victor W.

343 West Manhattan
983-5497

Kruger, Willard C.

P. O. Box 308
983-7308

Lattin, Eli Voil

2071 North Road
Los Alamos 87544
662-2183

Luna, Ted C.

225 E. Marcy
982-8036

McHugh, John W.

P. O. Drw. 5619, Cor. Sta.
87502
982-8556

Nestor, Robert L.

343 West Manhattan
983-5497

Owen, George C.

105 E. Marcy
983-3347

Pfeffer, John David

General Delivery
827-3201

Pool, Sam

P. O. Box 4094
87502
827-2404

Quasthoff, Donna

P. O. Box 2145
827-3201, Ext. 518

Register, Philippe deM

P. O. Drawer "B"
983-4333

Reisacher, Robt. W., Col.

408 Delgado
988-4688

Romero, Bernabe, Jr.

322 Paseo de Peralta
P. O. Box 5072
982-2123

Stanley, Francis E.

P. O. Box 506
983-2258

Stewart, Harold

P. O. Box 1417
988-5531

Strader, Robert J.

P. O. Drw 5619, Cor. Sta.
87502
982-8556

Torres, Reynaldo V.

637 Cerrillos Road
982-4911

Walker, Louis W.

907 Camino Santander
983-3274

Weidner, Urban C., Jr.

Radio Plaza, Marcy St.
983-4414

Wood, Earl P.

Plaza Luisa
983-4622

Associate Members**Haney, William T.**

625 Camino Del Monte Sol
988-3107

Parmer, Thomas R.

302 Alegra Street
982-1918

Spears, Beverley Bruce

645 East Palace
982-4926

Chapter Associate Members**Coriz, Jim A., Jr.**

208 Delgado
982-1951

Mascarenas, William R.

P. O. Box 904
983-8948

Martinez, Melvin H.

P.O. Box 904, Santa Clara Pueblo
Espanola 87532
753-2443

Montoya, Robert B.

105 E. Marcy
983-3347

Ortega, Antonio F.

Rt. 2, Box 186
983-3347

Zamora, Robert

1023 Dunlap
983-0100

Zinn, Dale F.

711 Don Gaspar
988-3472

Zinn, Ann Louise

711 Don Gaspar
988-3472

Emeritus Member**Brunet, James A.**

P. O. Drawer "B"
983-4333

NEW MEXICO SOUTHERN CHAPTER A.I.A.

President.....Randall L. Kilmer

Director.....Edwin C. French

Vice Pres.....Arthur A. Gorrell, Jr.

Director.....Kern Smith

Sec.-Treas.....Eldon W. Smith

Director.....Wilbur T. Harris

Corporate Members**Alley, Rembert C., Jr.**

Box 2106
Roswell 88201
623-5700

Ball, Robert J.

2045 Gladys Drive
Las Cruces 88001
522-2366

Dorsey, Duane

Box 933
Mesilla Park 88047
523-4220

Durham, Beryl

514 North Canal St.
Carlsbad 88220
885-5545 or 5640

French, Edwin C.

Box 237
Roswell 88201
622-3851

Gorrell, Arthur A., Jr.

303 North Canal Street
Carlsbad 88220
885-8500

Harris, Wilbur T.

Drawer H
Hobbs 88240
393-2257

Hill, Jay

Box 342
Silver City 88061
388-1571

Killian, Richard L.

Drawer H
Hobbs 88240
393-9743

Kilmer, Randall L.

Drawer H
Clovis 88101
762-2991

Mitcham, Raymond

Box 996
Roswell 88201
623-7111

Nims, Ronald C.

514 North Canal St.
Carlsbad 88220
885-9552

Nolan, Charles E., Jr.

Box 1788
Alamogordo 88310
437-1405

Pendleton, Warren F.

Post Office Box 1208
Clovis 88101
763-6923

Protz, D. Craig

P. O. Box 298
Las Cruces 88001
524-8071

Smith, Eldon W.

P. O. Drawer "J"
Clovis 88101
762-2968/69

Smith, Kern

514 North Canal St.
Carlsbad 88220
885-5545 or 5640

Standhardt, Frank M.

Arabella Route
Box 24, Tinnie 88351
653-4442

Waggoner, Richard

Box 1027
Roswell 88201
623-3600

Wall, James

605 N. Water
Las Cruces 88001
523-5951

Wham, Robert L.

P. O. Box 672
Hobbs 88240
393-2880

ASID - 1977 - ASID
American Society of Interior Designers
New Mexico Chapter

President.....Rudolph Salazar

Vice President.....Ronald Nelson

Board Member.....Ernest Young

Secretary.....Lynda Klingman

Board Member.....Frank Woods

Treasurer.....Margaret Paulick

Board Member.....Eloisa Branch

Board Member.....Jim Felter

Board Member.....John Conron, FASID

Fellows

Comeford, Modesta

Modesta's
108 Vassar, S.E.
Albuquerque 87106
266-4884

Conron, John P.

The Centerline, Inc.
207 Lincoln Ave.
Santa Fe 87501
982-5674

Professional Members

Branch, Eloisa Eckert

Eckerts', Inc.
Box 4507
Albuquerque 87106
265-6966

Conkle, E. P., Jr.

Modesta's
108 Vassar, S.E.
Albuquerque 87106
266-4848

Cox, Jessie

Jessie Cox Interiors
Rt. 1, Box 55-X
Carlsbad 88220
885-8318

Crawford, End

Nobel, Inc.
1615 Broadway, N.E.
Albuquerque 87102
842-5700

Drew, Frank W.

Drew-Pilat
503 Canyon Road
Santa Fe 87501
983-4461

Duncan, Mary Huber

Eckerts', Inc.
Box 4507
Albuquerque 87106
265-6966

Felter, James D.

New Mexico Office Furniture
6437 Linn Ave., N.E., Box 8512
Albuquerque 87110
265-7841

Ferguson, Catherine A.

722 Solano, S.E.
Albuquerque 87108
266-4769

Fessler, Alice G.

Macfield Interiors & Antiques
1705 San Pedro, N.E.
Albuquerque 87110
268-3806

Fox, Ellen

Ellen Fox Interiors
Box 33, 33 Tierra Monte, N.E.
Albuquerque 87122
294-7327

Hamilton, Shirley M.

332 First National Tower
Las Cruces 88001
524-7164

Huber, Jo Eckert

Eckerts', Inc.
Box 4507
Albuquerque 87106
265-6966

Hudson, Susan K.

American Furniture
Carlisle and Menaul, N.E.
Albuquerque 87110
883-2211

Jones, Grady M.

Interiors West, Inc.
1020 East Lohman Avenue
Las Cruces 88001
524-7560

Klingman, Lynda M.

Leishman's
2720 San Mateo, N.E.
Albuquerque 87110
881-9619

Nelson, Ronald W.

4616 Robin Ave., N.E.
Albuquerque 87110
881-3203

Paulick, Margaret

12332 Eastridge, N.E.
Albuquerque 87112
292-2990

Pettingell, Jean

Jean Ellett Pettingell & Assoc.
212 Bryn Mawr Dr., N.E.
Albuquerque 87106
268-7373

Pilat, Leonard

Drew-Pilat
503 Canyon Road
Santa Fe 87501
983-4461

Purdy, Wm. H.

Bill Purdy Interiors
2600 W. Alameda
Roswell 88201
622-2858

Ross, Lulu

3144 La Ronda, N.E.
Albuquerque 87112
881-0325

Rusler, Lindsay

P. O. Box 325
Ruidoso 88345
257-4151

Salazar, Rudolph

Rudolph's Interiors, Inc.
1019 Parkland Place, S.E.
Albuquerque 87107
256-1050

Turrentine, Lynda

Design Plaza
Division of The Paper Mill, Inc.
P. O. Drawer "P"
Las Cruces 88001
524-2866

Woods, Frank

504 Jose Street
Santa Fe 87501
988-4478

Worthen, Richard G.

5620 Eubank, N.E.
P. O. Box 14832
Albuquerque 87111
293-2921

Young, Ernest C.

Leishman's
2720 San Mateo, N.E.
Albuquerque 87110
881-9619

Zander, Emily V.

Eckerts', Inc.
Box 4507
Albuquerque 87106
265-6966

Associate Members

Earnest, Pamela D.

Leishman's Interiors
2720 San Mateo, N.E.
Albuquerque 87110
881-9616

Law, C. Eugene

P. O. Box 1542
Santa Fe 87501
988-4295

Lowder, Hamilton H.

The Paper Mill, Inc.
2215 S. Main
Las Cruces 88001
524-2866

Messersmith, Christine

Richard G. Worthen Des. Assoc.
5620 Eubank, N.E.
P. O. Box 14832
Albuquerque 87111

Wilson, Gene D'Laurel

Homestead House
1900 Wyoming Blvd., N.E.
Albuquerque 87112
294-1488

Retired

Rila, J. Norman

709 Arizona, S.E.
Albuquerque 87108
265-6966

Press Affiliate

Neff, Guy M.

c/o Baca Studio
619 Camino Rancheros
Santa Fe 87501

Education Affiliate

Knapp, Patricia N.

Cooperative Extension Service
Box 3AE
New Mexico State University
Las Cruces 88001

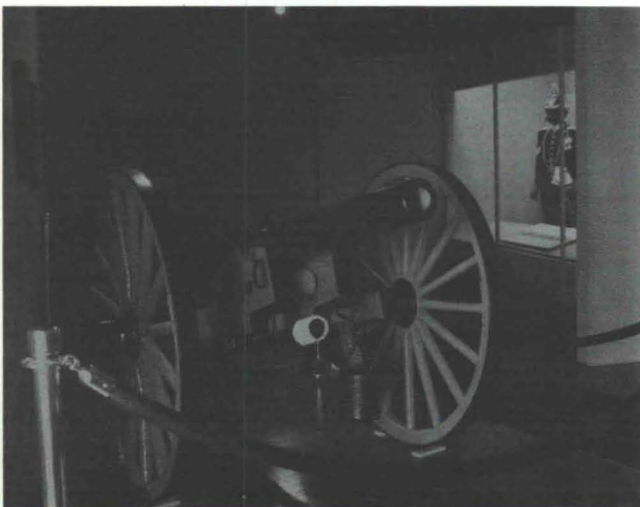
Honorary Fellow

Girard, Alexander H.

P. O. Box 2168
Santa Fe 87501

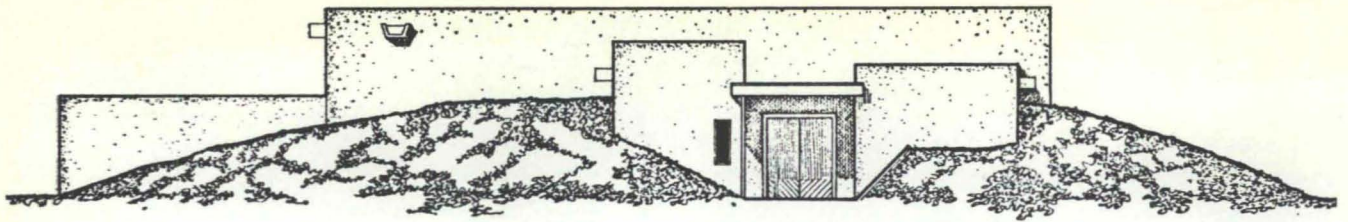


A Small Museum at Fort Selden State Monument

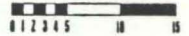


Architect: Pacheco and Graham
 Electrical Engineer: Donald Fowler
 Structural Engineer: Robert Krause
 Exhibit Designer: James Drum
 Contractor: Hearon Construction Co.

A 1976 awardee in the Cultural
 Properties Review Committee
 Annual Award Program.



front elevation



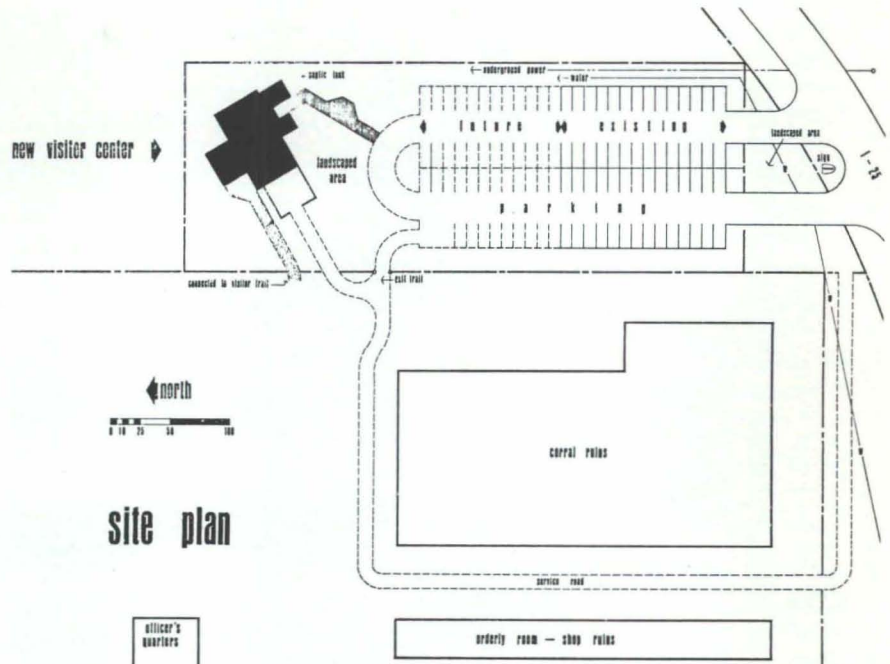
The design program asked for a museum and visitor center to be located at the adobe ruins of a post-Civil War military fort. The building was to be adaptable to exhibits of varied and changing character. The site is located on a desert mesa with Upper Sonoran natural landscape.

The project was designed within the "Architectural Criteria for New Construction at Historic Sites" as adopted by the New Mexico Committee on Historic Preservation. Quoting from the criteria:

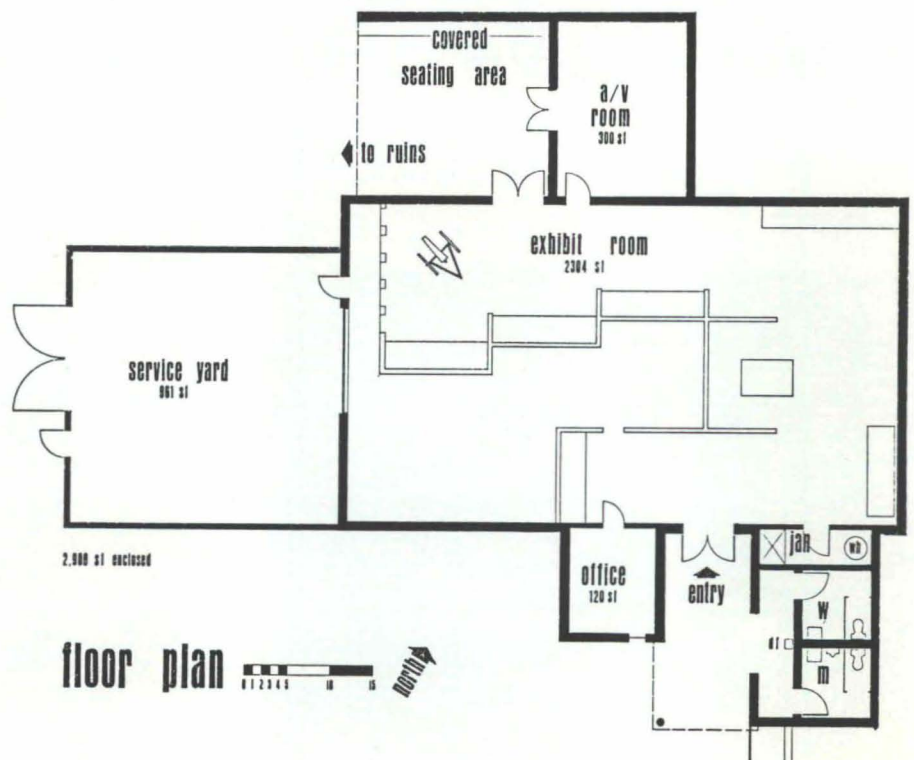
"The basic criterion that a work of architecture must be clearly stated as a product of its own time becomes of critical importance when the new building is ancillary to a historic building or site. The possibility that a visitor might interpret the new building as an indication of the style or character of the historic building or site must be avoided. Any new building must respect its own character as well as that of the site it serves if it is to succeed in its basic explanatory function, and if it is itself to have value as a work of architecture."

The area with the visitor center and parking lot was graded to a level approximately 2 feet below the general ground level in order to subordinate these elements with respect to the ruins. Earth fill was bermed against the sides minimizing the facades. All disturbed earth was re-landscaped with desert plants indigenous to the area.

The building was designed to provide a large open and flexible space, with the main room adapt-



site plan

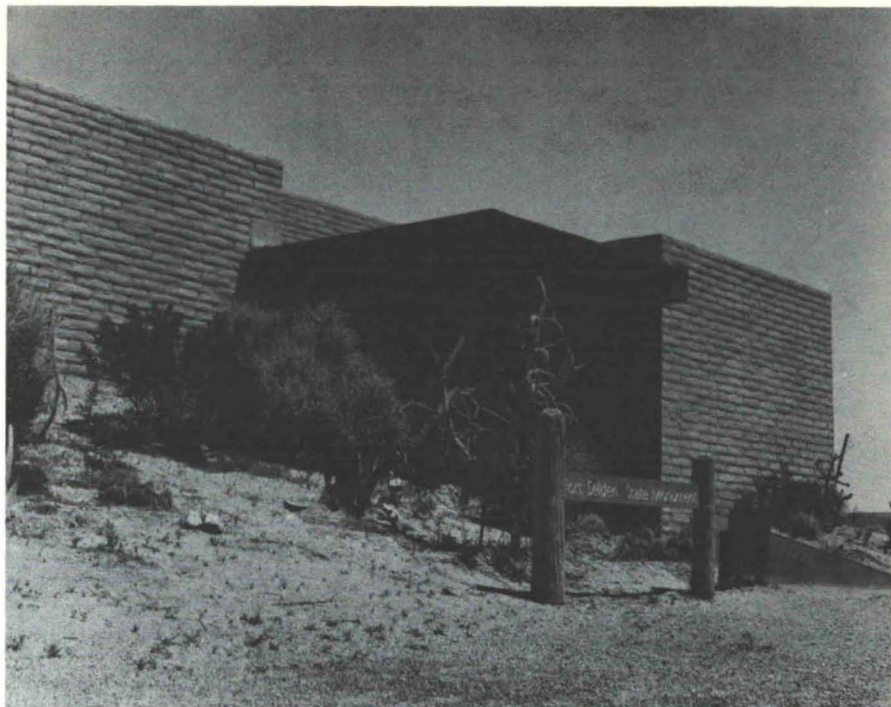


floor plan

able to changing exhibits. Exhibit structures are free standing. Power and lighting is provided by ceiling drops.

Interior wall finish is 5/8" gypsum board on wood furring strips. Ceiling is a suspended, one-hour rated lay-in system with integral plug-in lighting tracks. Floor is colored concrete. Wall construction is slump rock with a slurry exterior coating of stucco.

The design solution is a simple and straight forward answer to given criteria. T. C.



NEW MEXICO ARTS COMMISSION ANNOUNCES 7TH ANNUAL AWARDS PROGRAM

Entries are now being solicited for the annual New Mexico Arts Commission awards program. The awards are given in two categories as outlined below:

1) "AWARD FOR EXCELLENCE" IN NEW CONSTRUCTION

In order to recognize significant and distinguished contributions to the total environment, the New Mexico Arts Commission and the New Mexico Society of Architects have established an annual Award of Excellence for new or recent construction.

The award will be presented to designers of structures which have been built within the state of New Mexico, and which enhance the environment for Man.

2) "AWARD FOR EXCELLENCE" IN THE FIELD OF HISTORIC PRESERVATION

It is an established fact that the retention of the historical records of man's achievement is of immense value to present and future generations. Historical buildings, artifacts, and sites are the visual catalogue of that heritage.

Accordingly, the New Mexico Arts Commission and the New Mexico Society of Architects have established an Award for Excellence in the field of Historic Preservation. This award will recognize valuable efforts in the preservation of significant architecture, artifacts, or sites of historical importance. This award can be given to an individual or an organization who has made a significant contribution to the field of Historic Preservation.

The nominations for either award category are not limited to architect designed buildings. Any structure is eligible—a bridge, a

dam, a house, a barn, a site, or a monument.

Nominations are solicited from architects, engineers, planners, landscape architects, historical societies, garden clubs—any person or any organization.

The New Mexico Society of Architects undertakes to administer these awards programs. The jury appointed by the New Mexico Society of Architects wants to see all that has been constructed or preserved throughout New Mexico which might warrant consideration for these awards.

No rules or restrictions are placed upon the presentation of entries. It is nominations which are solicited, not expensive and elaborate brochures. However, sufficient pictorial and documentation material must be submitted to explain the nomination to the jury.

*The Deadline for Receipt of
Nominations is August 31, 1977.
Send entries to:*

*John P. Conron
P. O. Box 935
Santa Fe, N. M. 87501*

THE ILFELD BUILDING

Esta' Muerto



The Charles Ilfeld Warehouse in Albuquerque has been torn down. During 1974 a long hard fight to save the building was mounted by citizens of Albuquerque. (See the Sept/Oct 1975 NMA) Although temporarily saved by action of a lame-duck City Council in June 1974, the building was finally destroyed by action of the current City Council during February 1977.

SCHLEGEL NAMED TO NAT. ARCH. ACC. BD.



University of New Mexico Architecture Professor Don P. Schlegel has been appointed one of two architectural school representatives on the 13-member National Architectural Accrediting Board.

The board governs accreditation of all schools of architecture in the United States. Its membership includes, in addition to institutional representatives, practicing professionals, representatives of the architectural registration board, persons from allied professions, and laymen.

One of Schlegel's duties as a member of the board will be to chair accreditation teams two or three times a year in evaluation of architectural schools and departments.

Dear Mr. Conron,

Congratulations on your fantastic reportage in the New Mexico Architecture. We have no words to use in our appraisal, your observations and very fair and human approach to the subject.

It so happens that my wife and I spent that rainy summer in Poland, covering the same areas, generally as you did. We relived our vacation reading your article over and over again.

Mr. Ed Tomczak, a friend of mine since his youth (and who was a colleague of yours in the Air Force in Italy) phoned me about your story. Since I am a history buff, specializing in Polish background material, etc., I asked Ed if it would be proper for me to request from you additional copies of your publication and also permission to write a "report" on it, also "quote from your story" for

our Polish-American press. I contribute frequently to a Polish-American weekly STRAZ in Scranton, Pa., also speak before member groups of the Polish-American Congress in the metropolitan area.

Again, our thanks and congratulations on one of the finest goodwill accounts and professional reportages it has been my privilege to read in a long while.

Respectfully,
Anthony K. Podbielski
Lt. Col AUS (Retd.)
Bayonne, New Jersey

THE KIT CARSON HOUSE IN TAOS—A CORRECTION

Dear Editor:

Members of the Historic Santa Fe Foundation have long found *New Mexico Architecture* a valuable reference source for information on historic structures not only in the Santa Fe area but the entire

state. I particularly enjoy articles which not only present the history associated with New Mexico buildings but also those which trace their architectural evolution.

Past issues of NMA have been noted for their historical accuracy. However in the recent January-February issue, the caption for the Kit Carson House was incorrect. Possibly in abbreviating the history of this house, the meaning was altered. The structure was built in 1825 but not by Christopher (Kit) Carson who did not purchase it until 1843. On February 6, 1843, Carson married María Josefa Jaramillo who was fifteen at the time. Both maintained a residence in the house until shortly before their deaths in the spring of 1868.

Sincerely yours,
James H. Purdy
Chairman

ITS ALL HAPPENED BEFORE DEPARTMENT

NOAH WAY

*And the Lord said unto Noah:
"Where is the ark which I
have commanded thee to
build?"*

*And Noah said unto the Lord:
"Verily, I have had three
carpenters off ill. The
gopher-wood supplier hath
let me down - yea, even
though the gopher wood hath
been on order for nigh upon
12 months. What can I do,
O Lord?"*

*And God Said unto Noah: "I
want that ark finished even
after seven days and seven
nights."*

*And Noah said: "It will be
so."*

*And it was not so. And the
Lord said unto Noah: "What*

*seemeth to be the trouble
this time?"*

*And Noah said unto the Lord:
"Mine subcontractor hath
gone bankrupt. The pitch
which Thou commandest me
to put on the outside and
on the inside of the ark
hath not arrived. The plumb-
ers hath gone on strike.
Shem, my son who helpeth me
on the ark side of the busi-
ness, hath formed a pop
group with his brothers,
Ham and Japheth. Lord, I
am undone."*

*And the Lord grew angry and
said: "And what about the
animals, the male and the
female of every sort that I
ordered to come unto thee
to keep their seed alive
upon the face of the earth?"*

*And Noah said: "They have
been delivered unto the*

*wrong address but should
arriveth on Friday."*

*And the Lord said: "How
about the unicorns, and
the fowls of the air by
sevens?"*

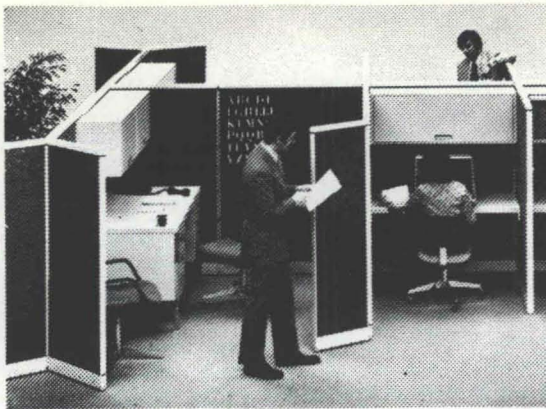
*And Noah wrung his hands
and wept, saying: "Lord,
unicorns are a discontinued
line; thou canst not get
them for love nor money.
And the fowls of the air
are sold only in half-
dozens. Lord, Lord, Thou
knowest how it is."*

*And the Lord in His wisdom
said: "Noah, my son, I
knowest. Why else dost
thou think I have caused
a flood to descend upon
the earth?"*

from the
--ERA Journal of Eastern Region
of the Royal Institute of
British Architects
(via the Illinois Chapter,
ASID Bulletin - Aug. 76)

**Your
business
has to
change with
the times,
so why
have walls
that won't?**

*New
Mexico
Office
Furniture*



Steelcase Movable Walls

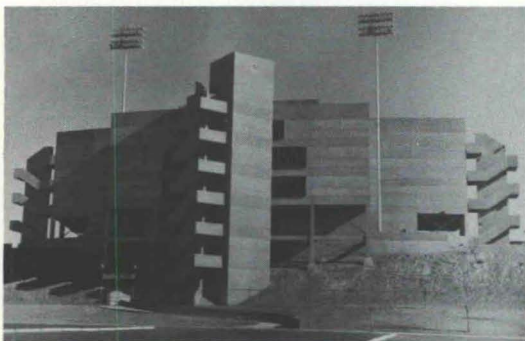
A wall that's only a wall is an obstacle. But a Steelcase Movable Wall System can form an office today or a conference room tomorrow or two or three work-stations the day after. In other words, it gives you unlimited flexibility in planning your office interiors. And that's a boon to any business.

6437 LINN AVE. N.E. • ALBUQUERQUE, NEW MEXICO • (505) 265-7841

PROVEN CEMENTITIOUS COATINGS

- MODIFIED COATINGS
- CONVENTIONAL STUCCO
- MASONRY PAINTS

MANUFACTURED IN ALBUQUERQUE, N.M.



SUPER-FLEX I, an acrylic base modified cementitious coating that may be trowel applied and textured as with stucco.

SUPER-FLEX II, a superior thin coat finish developed as a spray material for a flexible finish for masonry, metal, and other non-porous surfaces. Ideal for coating asbestos board, foam board, woodrock and as a bed coat for marble crete.

BRAVO MASONRY PAINT, a waterproof filler and color coat for concrete block, slump block, precast concrete or any masonry cement substrate. Just add water - six standard plus custom colors.

FOR BROCHURES AND INFORMATION - CALL OR WRITE



STUCCO CO., INC.

4100 1/2 BROADWAY, S. E.
ALBUQUERQUE, N. M. 87102
(505) 873-1180

ALBUQUERQUE TESTING LABORATORY.... TO BE SURE!



SUBSOIL INVESTIGATIONS
PHYSICAL TESTING
INSPECTION
RESEARCH
WELDING CERTIFICATION
NUCLEAR DENSITY
LABORATORY ANALYSIS AND
EVALUATION OF CONSTRUCTION
MATERIALS

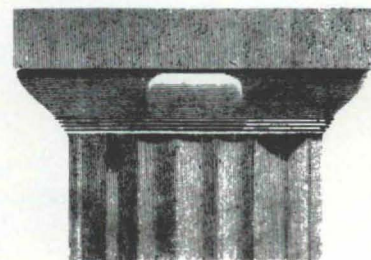
ALL WORK DONE UNDER SUPERVISION OF REGISTERED
PROFESSIONAL ENGINEERS

532 JEFFERSON, N. E.
ALBUQUERQUE, NM
P. O. BOX 4101

PHONE 255-8916 or 255-1322



THE DORIC CREDIT UNION



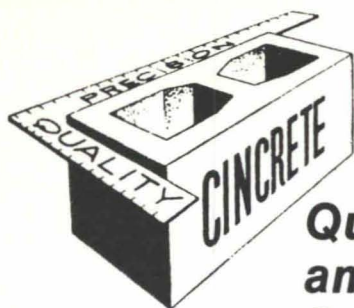
for
Architects, Engineers, their Employees, Wives,
and Children

is
your best investment for deposits and loans
contact your chapter secretary
for membership cards or loan applications

or:

Allison Engineering
P.O. Box 411A

Albuquerque, NM 87106
505/266-3300



BUILDERS BLOCK

Members:
New Mexico Concrete
Masonry Association
National Concrete
Masonry Association

**Quality Concrete Masonry Products
and many allied building materials.
Serving New Mexico and West Texas
for over a quarter of a century.**

P.O. Box 1633
Roswell, NM 88201
505/622-1321

P.O. Drawer FF
Las Cruces, NM 88001
505/524-3633

Telephone
El Paso
915/532-9695

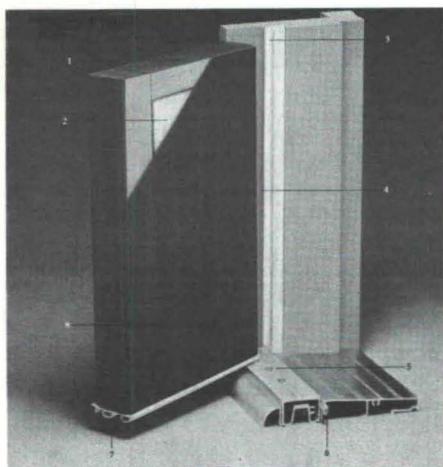


BUILDS A BETTER INSULATED DOOR

**EVERY FEATURE A RESIDENTIAL
ENTRY DOOR SHOULD HAVE.**

AN INTEGRAL PART OF THE SMART HOME CONCEPT.

1. Finger-jointed, quality lumber offers true surfaces and the best structural thermal break available.
2. A solid polystyrene core provides insulation equivalent to 16" of fiberglass - the same as a 2" solid wood door with storm door.
3. There's double compression magnetic weatherstripping for superior alignment.
4. Three 4" recessed hinges lend strength and beauty to the door.
5. Threshold is fully adjustable to maintain weather-tight closure.
6. A felt moisture seal bars frost, dampness and drafts.
7. The triple seal bottom sweep prevents weather leaks.
8. A tough, 24 gauge metal skin offers physical security and a good, durable appearance.



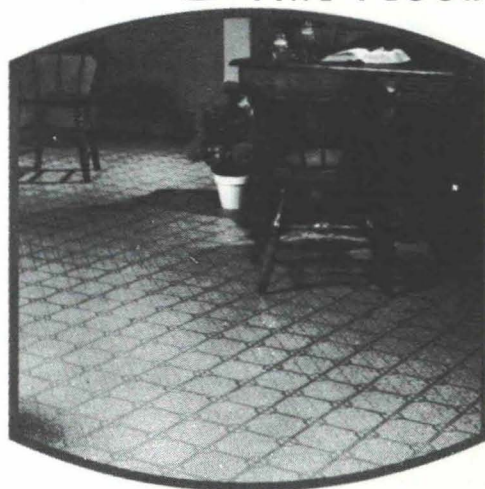
FOR COMPLETE SPECIFICATION INFORMATION CALL



2840 LOS ARBOLES AVE., N. E.
ALBUQUERQUE, NEW MEXICO
PHONE 344-4156

Congoleum®

FINE FLOORS



PEERLESS™

CUSHIONED VINYL FLOORS. THE ULTIMATE IN CUSTOM FLOORS FOR COMMERCIAL INSTALLATION. THE WHITE SHIELD BACK ALLOWS INSTALLATION ON OR BELOW GRADE.

ASK TO SEE THE WIDE SELECTION OF BEAUTIFUL PATTERNS IN PEERLESS CUSHIONED VINYL SHEET GOODS. EXTRA RUGGED, YET SO BEAUTIFUL.



125 DALE, S. E.

P. O. BOX 2511, ALBUQUERQUE, NM 87125
PHONE 877-5340



YOUR LOCAL AIA FORM SERVICE

offers to all AIA members and componets a 50% discount on all "B" series and a 20% discount on all other forms and documents.

Please use the February 1, 1977 price list for new prices.

This is a service of the New Mexico Society of Architects, and we appreciate your support.

Office hours from 9 to 12,
Monday through Friday

AIA FORM SERVICE

915 LEAD, S.W.
Box 7415

(505) 242-4159
ALBUQUERQUE, NM 87104



new mexico architecture

nma

Published bi-monthly by New Mexico Society of Architects, American Institute of Architects, a non-profit organization.

Editorial Correspondence should be addressed to John P. Conron, Box 935, Santa Fe, N. M. 87501. 505 983-6948.

Editorial Policy: Opinions expressed in all signed articles are those of the author and do not necessarily represent the official position of the publishing organization.

No responsibility will be assumed by the editor or publishing organization for unsolicited contributions. Return postage should accompany all unsolicited manuscripts.

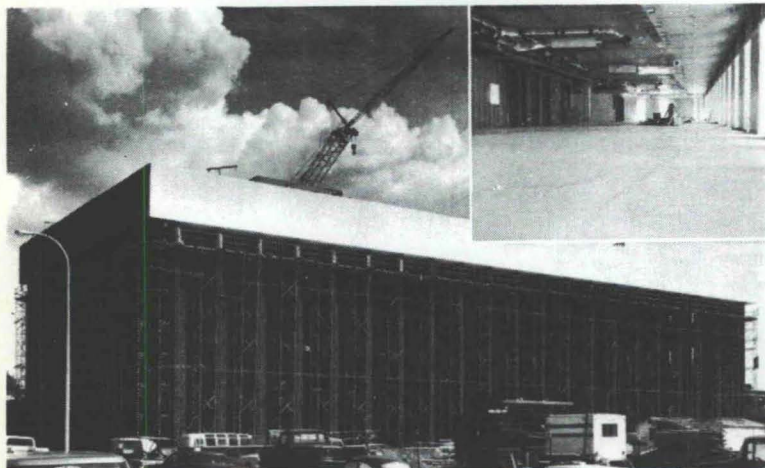
Subscriptions: Write Circulation, New Mexico Architecture, Box 7415, Albuquerque, N. M. 87104. Single copy \$1.00. Yearly subscription \$5.00.

Change of address: Notifications should be sent to New Mexico Architecture, Box 7415, Albuquerque, N. M. 87104 at least 45 days prior to effective date. Please send both old and new addresses.

Advertising: Send requests for rates and information to New Mexico Architecture, Prince Advertising Agency, P. O. Box 11309, Albuquerque, NM 87112.

Additional copies of NMA available from John P. Conron FAIA/FASID, P. O. Box 935, Santa Fe, N. M. 87501.

Structural integrity: The concrete facts of southwestern life.



Employment Security Commission Office Building in Albuquerque
Architect: W. C. Kruger and Associates
Structural Engineer: Robert Krause
ChemComp Concrete supplied by Albuquerque Gravel Products Company

The assignment was to place concrete floors on metal decks in the new Employment Security Commission Office Building in Albuquerque. ChemComp® was specified to reduce or eliminate cracking typical of this type of placement. The architects and engineers were well satisfied with the results (see inset). Check ChemComp's many advantages by writing for our free brochure: Box 392, El Paso, Texas 79943.



SOUTHWESTERN PORTLAND CEMENT COMPANY
MAKERS OF EL TORO CEMENTS / EL PASO, AMARILLO, ODESSA

Printed By

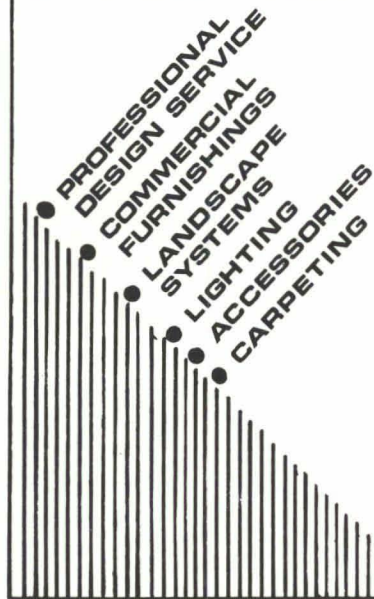
Hall-Poorbaugh Press, Inc., Roswell, N. M.

INDEX OF FIRMS who make possible the publication of NMA and the page upon which their message may be found:

AIA Form Service	22
Albuquerque Testing Laboratory	20
American Interiors	23
Builders Block & Stone Co., Inc.	21
Crego Block & Stone Co., Inc.	2
Customcraft Fixtures	6
Doric Credit Union	20
El Rey Stucco Co., Inc.	20
Hanley Paint Mfg. Co., Inc.	23
Hydro Conduit Corporation	24
Mason Contractors Assn. of N.M.	4
McGill Trus Joist	6
New Mexico Office Furniture	20
Overhead Door Co.	21
San Vallé Tile Kilns	7
Southwest Vermiculite Co., Inc.	10
Southwestern Portland Cement Co.	22
Spectra-Glaze	6
Stanley Structures	5
Stryco Sales, Inc.	21
Summit Brick	23



612 CENTRAL S.W.
ALBUQUERQUE, NEW MEXICO 87102



interiors

The paints and coatings Southwestern professionals use.

Easy-on interior paints, climate-designed exterior paints, color coordinated wall-coverings, industrial-technical coatings, and a complete selection of professional supplies and accessories. Since 1936.

Hanley Paint

Manufacturing Co.

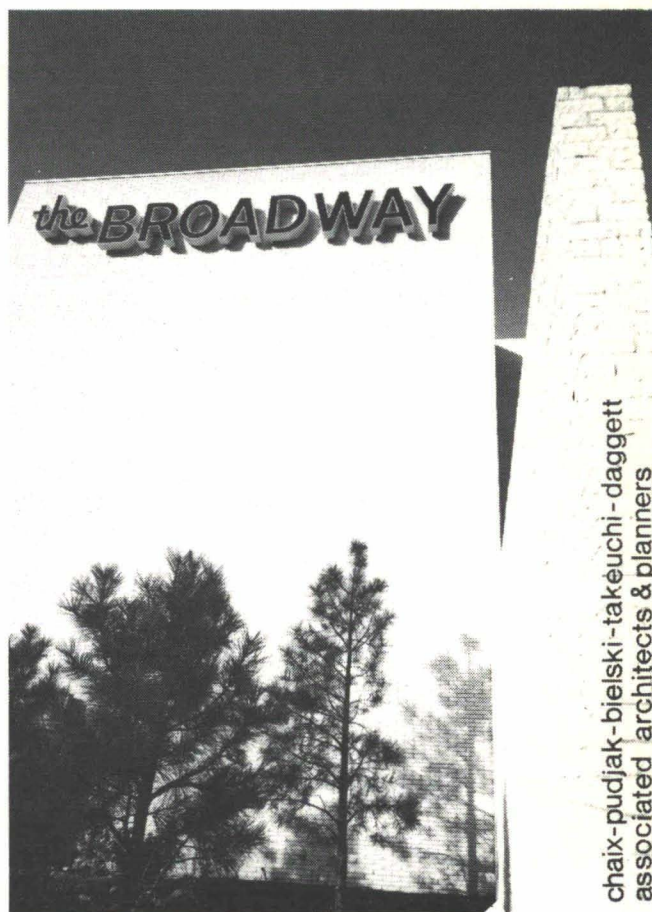
Albuquerque, N.M.: 1214 San Pedro N.E.
El Paso, Texas: 1531 Magoffin, 9054 Dyer,
7636 Gateway East, 5937 N. Mesa

Rock Face Norman is not the new security chief at the Broadway.

Its our name for the striking custom brick chosen by The Broadway and its architects for a major contribution to an image of quality.

SUMMIT BRICK

5905 MARBLE, NE ALBUQUERQUE NM 268 9764



chaix-pudjak-bielski-takeuchi-daggett
associated architects & planners

Library
University of New Mexico
Albuquerque, N. M. 87106

Bulk Rate
U. S. Postage
PAID
Roswell, N. M.
Permit No. 47

Vol. 19, No. 2

CONCRETE - CALL IT VERSATILE



Concrete has the versatility to match or complement other materials on a given project. The scope of concrete's versatility is endless.

The railroad overpass on Central Avenue in Albuquerque, a part of the Tijeras Urban Renewal Project, incorporates precast concrete panels fabricated to match the adjacent warm tone cement cast in place concrete shapes.

Complementary white tone concrete railings were also produced for the project. Ninety-nine precast panels and one hundred eighty-seven railing members were used in the project.

ENGINEER - Scanlon and Associates

CONTRACTOR - Kent Nowlin Construction Co.



HYDRO CONDUIT CORPORATION

2800 SECOND STREET, SW — ALBUQUERQUE, NEW MEXICO 87103