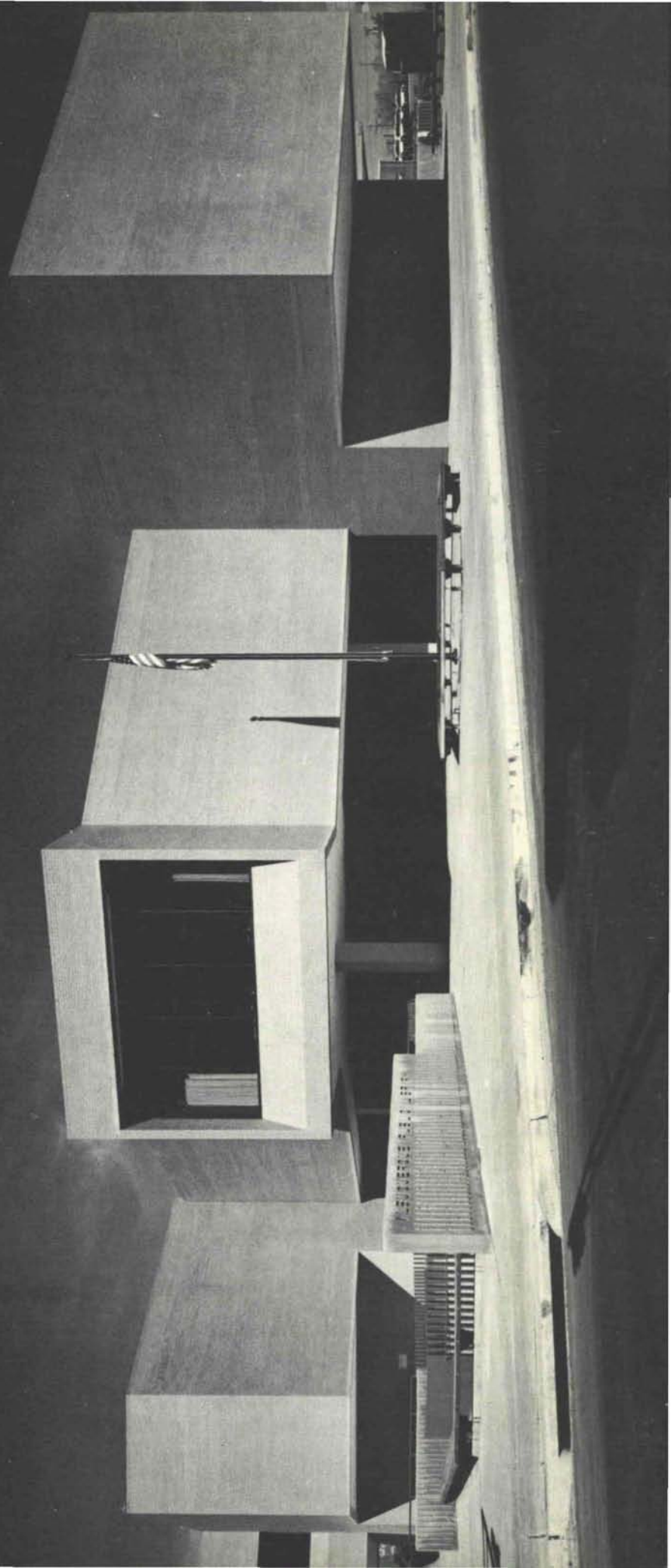


new mexico architecture

September-October 1975

\$1.00



FROM PLAIN GRAY
TO CUSTOM COLOR—
CREGO PLAIN CINDER
SPLIT FACE CONCRETE
MASONRY UNITS
WATERPROOFED AND
PERMANENTLY COLORED
WITH PRIME-A-PELL
SURFACE TREATMENT
STAIN. ANY COLOR
AVAILABLE!

A color photograph of the Embudo Towers Apartments. The building is a multi-story structure with a modern design, featuring large windows and a flat roof. In the foreground, there is a large, circular, light-colored fountain with water spraying upwards. The sky is clear and blue.

Call Your PRIME-A-PELL Supplier

EMBUDO TOWERS APARTMENTS
Owned & Operated by Housing Authority Division
City of Albuquerque
Chambers, Campbell, Isaacson & Chaplin—Architects
Bradbury & Stamm, Inc.—Contractors

phone (505) 344-3475



nma

vol. 17 no. 5

sept. - oct. 1975 • new mexico architecture

A battle for conservation rages in Santa Fe. Shall the **Fort Marcy Officer's Residence**, (see our previous issue, July - August 1975, which features in detail this historic structure) be pushed aside for the expansion of the Fine Arts Museum?

Because both structures are the property of the Museum of New Mexico, this vital matter concerns all the citizens of New Mexico; you are the actual owners of these properties. You paid for them out of your pockets through tax dollars!

Current preliminary plans for the estimated 3 million dollar (also to be your tax dollars) expansion call for the destruction of the Fort Marcy Officer's Residence.

A nationally prominent architect, who makes New Mexico a second home, and who has been asked by the Museum of New Mexico Foundation to act as a consultant says: "There is nothing there... It isn't historic, architectural or anything else." He has convinced many of the Museum Board of Regents but, apparently, not the Old Santa Fe Association, the National Register of Historic Places, nor the New Mexico Cultural Properties Review Committee, all of which have outspokenly urged that the house be saved.

It should also be pointed out that the Fine Arts Museum does need **expansion**, none have denied that. But, as several New Mexico architects have pointed out, expansion **can** take place around the historic house and that, to quote the dean of New Mexico architects, John Gaw Meem, FAIA, the house, if restored, would be an "asset" with the expanded Art Museum forming a well designed backdrop.

What do you, the reader, think? Look again at the article in the July-August issue to see what is left under the cosmetics of remodeling. Write the Museum of New Mexico and express your opinion. It is your property. —JPC

NMA News 9

NMSA annual conference in October —
Neighborhood conservation guide in print.

Albuquerque Public Library 11

Stevens, Mallory, Pearl & Campbell, Architects

The Gibbon Flight Cage 20

Long & Waters, Architects

(Cover — Albuquerque Public Library)

—Official Publication of the New Mexico Society of Architects, A. I. A.—

Society Officers

President—Bob Campbell
Vice President—Edwin French
Secretary-Treasurer—George Owen
Director—Bill Waters
Director—Gene Hunt
Director—Charles Nolan, Jr.
Director—Wilbur Harris
Director—Robert Strader
Director—John Conron, FAIA/FASID
Director—Kenneth S. Clark, FAIA

Commission for NMA

John P. Conron, FAIA, FASID—Editor
Ronald K. Hill—Associate Editor
Bainbridge Bunting—Editorial Consultant
Robert G. Mallory—Advertising
Mildred Brittelle—Accounting
and Circulation
John W. McHugh
Sam Pool



serving New Mexico
and the El Paso area
with

Quality Concrete Masonry Products and many allied building materials



Modernfold Wood and Plastic Folding Doors
Hollow Metal Doors and Frames *Reinforcing and Fabricated Steel*
Steel and Formica Toilet Partitions *Commercial Hardware*
Commercial Toilet Accessories *Moderncote Vinyl Wall Covering*
Residential and Commercial Steel and Aluminum Windows

Builders Block & Stone Co., Inc.

P. O. Box 1633
Roswell, N. M. 88201
505 622-1321

Builders Block & Supply Co., Inc.

P. O. Drawer FF
Las Cruces, N. M. 88001
505 524-3633

Builders Block & Stone Co., Inc.

P. O. Box 10284
Albuquerque, N. M. 87114
505 265-6085

Builders Block & Supply Co., Inc.

Telephone
El Paso
915 532-9695

Members: New Mexico Concrete Masonry Association, National Concrete Masonry Association



EMBLEM OF QUALITY IN LABORATORY FURNITURE

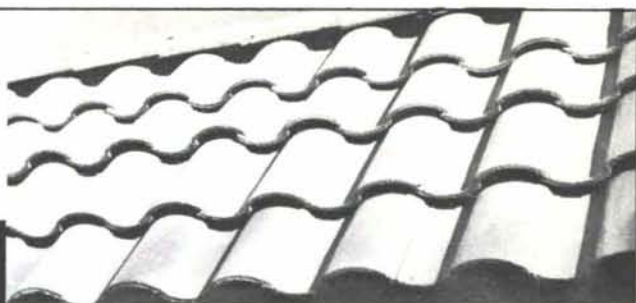
**ENGINEERING EXCELLENCE
COMBINED WITH DURABILITY
AND QUALITY PROVIDE THE
FINEST IN LABORATORY
FURNITURE.**

DON J. CUMMINGS CO., INC.

345-3451
ALBUQUERQUE, NEW MEXICO

P. O. BOX 3486
87110





Century Glazed MISSION TILE

*Classic, simple to install,
fireproof, weatherproof, made
of concrete, yet lighter than
clay, stronger than clay at a
fraction of the cost of clay.*

Century roof tile, inc.

2700 Second St., S. W.
Albuquerque, New Mexico 87102

PRECAST CONCRETE . . . PLAYING AN IMPORTANT PART IN ALBUQUERQUE'S DOWNTOWN DEVELOPMENT



The new 17-story Albuquerque Inn is another impressive structure in Albuquerque's downtown skyline, featuring precast concrete.

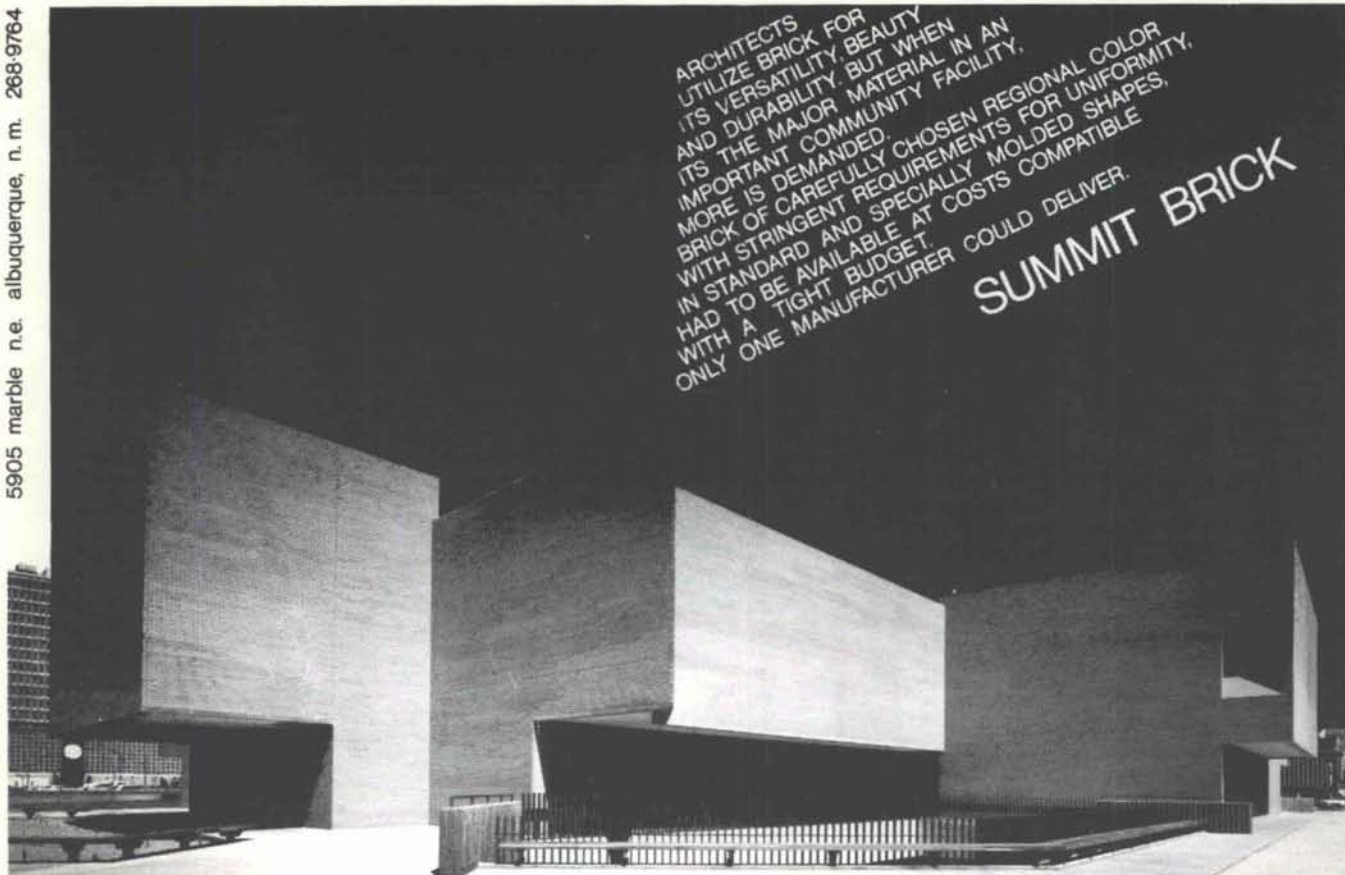
Produced in special fiberglass molds to afford a smooth finish, precast concrete spandrels totaling 19,800 square feet were used, plus 2,600 square feet of precast concrete parapet panels.

Albuquerque Inn — another testimony to the versatility and practicality of precast concrete in modern construction.

Associate Architect & Engineer—
COTTRELL, VAUGHAN & ASSOC.
Contractor—
GEORGE A. RUTHERFORD, INC.

PRESTRESSED 
CONCRETE PRODUCTS, INC.

1304 Menaul Blvd., N. E.,
Albuquerque, N. M. 87105
(505) 345-5671

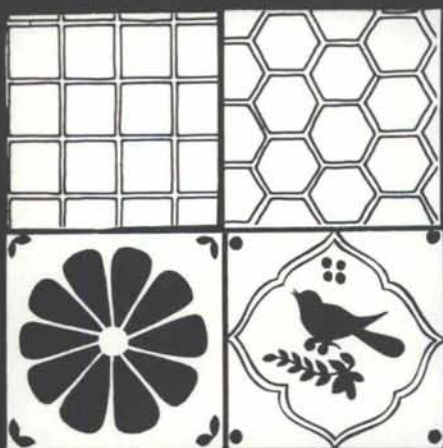


albuquerque public library

stevens mallory pearl & campbell · architects · a.i.a.

ARCHITECTS
UTILIZE BRICK FOR
ITS VERSATILITY, BEAUTY
AND DURABILITY, BUT WHEN
IT'S THE MAJOR MATERIAL IN AN
IMPORTANT COMMUNITY FACILITY,
MORE IS DEMANDED.
BRICK OF CAREFULLY CHOSEN REGIONAL COLOR
WITH STRINGENT REQUIREMENTS FOR UNIFORMITY,
IN STANDARD AND SPECIALLY MOLDED SHAPES,
HAD TO BE AVAILABLE AT COSTS COMPATIBLE
WITH A TIGHT BUDGET.
ONLY ONE MANUFACTURER COULD DELIVER.

SUMMIT BRICK



Artesanos offers you a fine
selection of Saltillo Floor Tiles,
and our colorful Talavera Tiles
for any home redecorating.



Send for our free brochure.

Artesanos Imports Co.

222 Galisteo Street Phone 983-5563
Santa Fe, New Mexico 87501

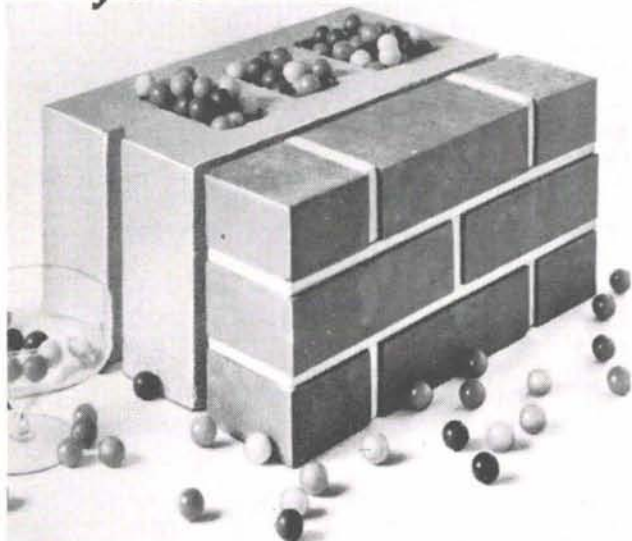
The paints and coatings Southwestern professionals use.

Easy-on interior paints, climate-designed
exterior paints, color coordinated wall-
coverings, industrial-technical coatings,
and a complete selection of professional
supplies and accessories. Since 1936.

**Hanley
Paint**
Manufacturing Co.

Albuquerque, N.M.: 1214 San Pedro N.E.
El Paso, Texas: 1531 Magoffin, 9054 Dyer,
7636 Gateway East, 5937 N. Mesa

Use *something* to insulate cavity and block walls. How about jawbreakers?



Whenever the temperature differs on the inside and outside of these walls (that's all the time), convection occurs in the cavities. The more different the temperature, the bigger the wind in the voids. The wind carries therms from the side where you want them to the side where you don't. These walls are as good as—or better—than other kinds of walls. But like all walls, they need insulation. Without it the occupants are as miserable as the heating and air conditioning bills.

Zonolite® Masonry Fill Insulation: better than everything

Zonolite Masonry Fill Insulation was developed specifically for these kinds of walls. It doubles their insulation value; a real boon to mankind. Keeps inside wall temperatures comfortable and the heating and air conditioning bills easy to take.

Zonolite pours right into the voids, fills them completely, never settles. It is water repellent; any moisture that gets into the wall drains down through it and out.

Cost: as low as 10¢ per square foot, installed.

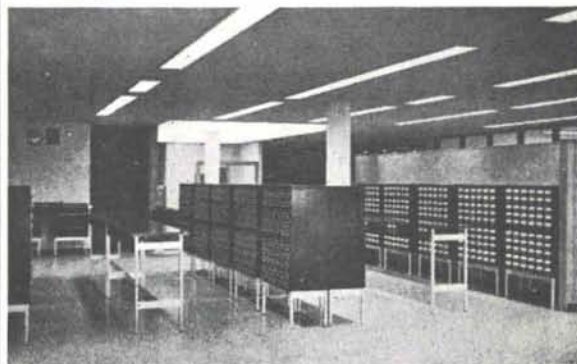
GRACE Southwest Vermiculite Co.
5119 Edith Blvd. N.W. Albuquerque, N. M.
87107

Gentlemen:

Somehow using jawbreakers doesn't sound like a good solution to the problem of insulating masonry walls. Send me Zonolite Masonry Fill Insulation Folder No. MF-83, with complete technical data and specifications.

NAME _____
TITLE _____
FIRM _____
ADDRESS _____
CITY _____ STATE _____ ZIP _____

FROM CONCEPT TO COMPLETION



Exclusive distributors
for BUCKSTAFF

Consultation Planning Design Layout

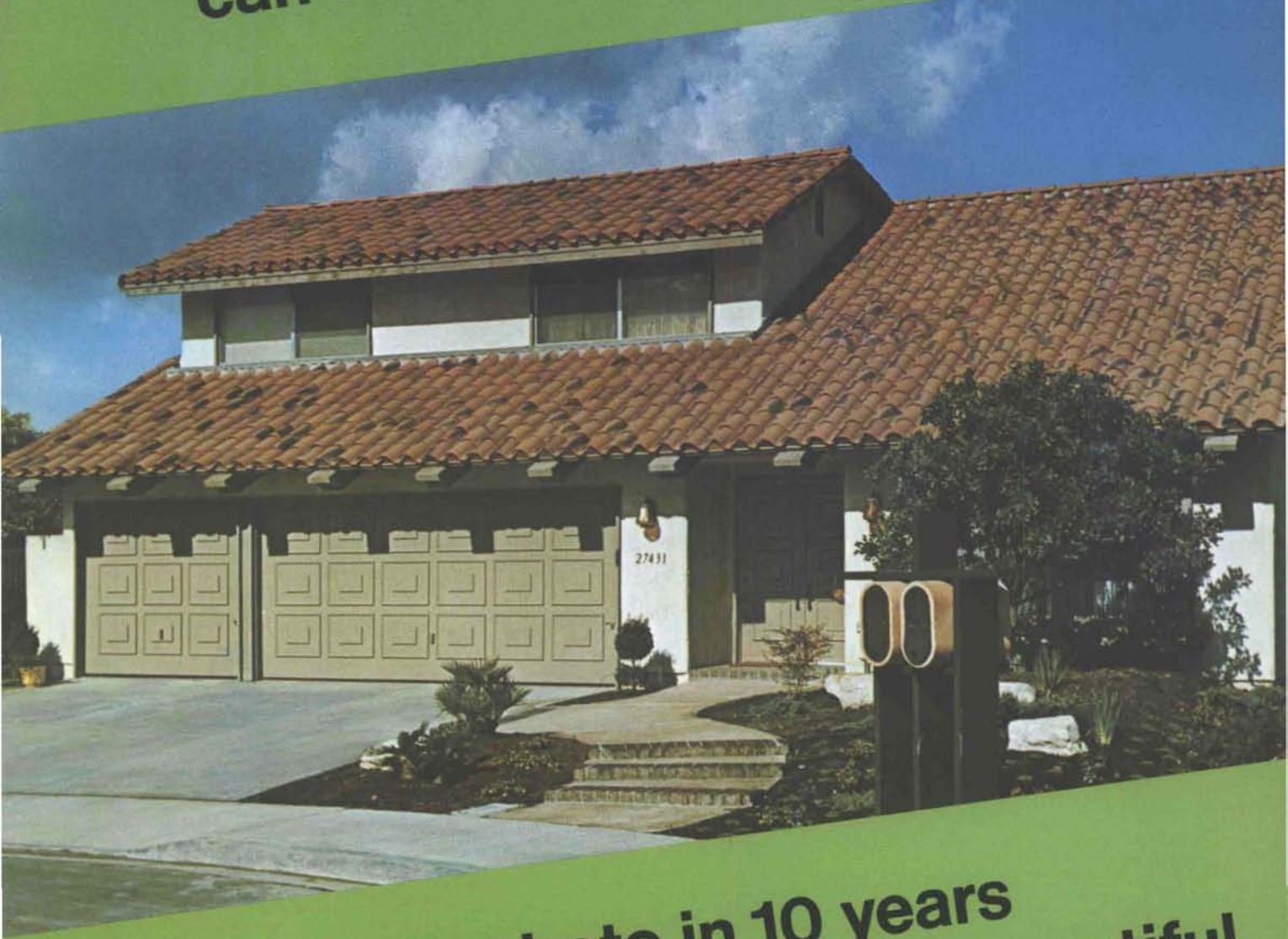
In the library, where mind speaks to mind, uncluttered and compatible design creates study carrels, personalized learning centers. These centers are a long-time dream of theoretical educators who envisioned the creation of units flexible enough for the needs of individual thought patterns. Now, carrels incorporate storage for film, earphone jacks, 8 mm projectors, pre-recorded magnetic tape . . . and partitioned seclusion for undisturbed concentration.

Architects use our design consultation services for:
Science Labs / Offices / Artrooms / Dormitories /
Libraries / Auditorium Seating / Home Economics
Labs / Gymnasiums

UNIVERSITY BOOK STORE ALLIED SUPPLY CO.

2122 Central, SE
Phone 243-1776
Albuquerque, N. M.

Nothing we say about our tile
can tell you as much as this photo.



Take another photo in 10 years
and it'll be even more beautiful.

We could describe what goes into San Vallé genuine clay tile—the ingredients and the process—and explain how well it insulates and protects. But you choose a roofing material primarily on the basis of aesthetics. And that's where San Vallé tile's *permanent* beauty becomes a deciding factor. You wouldn't settle for a poor substitute. Would you?

San Vallé TILE
KILNS
Since 185

Photo: Madrid Homes, Mission Viejo, California
Builders: Mission Viejo Company • Architects: Red Moltz & Associates

1717 No. Highland Avenue, Los Angeles, California 90028 ■ (213) 464-728

THE NATION'S LARGEST PRODUCER OF GENUINE CLAY ROOFING PRODUCTS

NEW MEXICO SOCIETY OF ARCHITECTS



Annual Conference/Meeting, Santa Fe, Oct. 24-25, 1975



HUMAN RESOURCES THROUGH ARCHITECTURE

Two seminar sessions are planned to explore the full range of *human resources* as expressed through *architecture*.

One seminar will discuss the recycling of old buildings not as historical museums but as re-useable, viable and economically feasible structured parts of existing communities. Historic preservation becomes a means for achieving community variety and maintaining visible historic roots.

The second session will look at the design potential of energy efficient buildings and inquire into the actual process of construction so that less energy need be expended by, for example, careful selection of those materials which themselves require much energy in their manufacture.

Additional convivial and educational activities are being planned — awards luncheon, hospitality in Santa Fe host architects' homes, tours of Santa Fe and environs, and a buffet supper in the old Our Lady of Guadalupe Church which is in the process of restoration as a museum and gallery.

SHALL WE SEE YOU ALL IN SANTA FE?

THE SOUTHERN CHAPTER, AIA DELEGATION
ARRIVING IN SANTA FE



NEIGHBORHOOD CONSERVATION GUIDE IN PRINT

When most people think about preserving sensitive ecosystems, they think about forests, wetlands or arctic tundra. But it is not just these natural areas which should be protected — neighborhoods are also delicately balanced ecosystems in need of conservation.

A new publication from the Center for the Visual Environment (CVE) explains how and why citizens can protect and enhance the elements of their community which make it unique — the elements which create neighborhood identity. CVE's GUIDE TO NEIGHBORHOOD ECOLOGY is based on the premise that "the visual environment is more than just the way a street or neighborhood appears to the casual observer . . . it is a reflection of a com-

munity."

The GUIDE has been designed and written to encourage those individuals and organizations newly-interested in neighborhood conservation and the visual environment to become actively involved in their own communities. It explains what people around the country are doing to protect their neighborhoods from the incursion of intense development, corporate architecture, poorly planned public works projects or municipal neglect. A 7-page bibliography and "how-to-do-it" section give new neighborhood ecologists the information necessary to begin working in their own cities.

The 13-page, illustrated GUIDE is the first major publication of the Center for the Visual Environ-

ment (CVE), a non-profit organization set up to assist citizen groups working to enhance and protect their communities, encourage the exchange of information between such groups, promote the establishment of new groups, and enlist support for such work from organizations not traditionally interested in this field — conservation groups, labor unions, business associations and public interest organizations. CVE's board of directors is composed of representatives from environmental groups and labor unions, as well as professional architects, designers, and planners.

The Guide to Neighborhood Ecology is available for \$1.00 from CVE, 1525 New Hampshire Ave., Washington, D. C. 20036.

E CUBE: A COMPUTER PROGRAM TO HELP YOU MAKE MONEY-SAVING, ENERGY-SAVING DECISIONS.

A THREE-PART LIFE CYCLE ANALYSIS—

1. ENERGY REQUIREMENTS.

E CUBE computes the hour-by-hour energy requirements of your building or planned building for an entire year—taking into account U.S. weather data, solar loads, building design, operating and occupancy schedules, and other operating factors. It sums them coincidentally—for single or multiple zones, even multi-building projects. And there's an easy manual check for every calculation.

2. EQUIPMENT SELECTION.

E CUBE lets you build, on the computer, a model of an energy system. Lets you "operate" that system so you can evaluate its performance. E CUBE can simulate many systems for you to compare—from all-electric to total energy, or any combination along the way—so you can choose the one that works best for you.

3. ECONOMIC COMPARISON.

E CUBE compares the total operating and capital costs of each system you study—takes project life and equipment life into account, provides for irregular and replacement expenses, and ranks the systems comparatively for life cycle costs.

E CUBE is accurate. There are other computer programs in this field, but E CUBE is by far the most advanced and has the experience of thousands of runs made by the American Gas Association member companies, industry, and people in private practice. The U.S. government is among the many successful users of E CUBE.

E CUBE is fast, private, moderately priced.

When we say it's private, we mean you give your information directly to the computer. Your project data and the results are never seen by any third party. E CUBE is available to you through the Cybernet® System of Control

Data Corporation, with installations in 44 major cities. Of course, we stand ready to provide assistance at your request.

An energy saver for new buildings and existing ones. Whether you're in the construction-planning stage, remodeling, upgrading and replacing old equipment, or simply want to check your building's efficiency, E CUBE can help you make the right decision. Right financially and right for conserving America's energy.

Helps you prepare many required reports.

Here's another reason you'll find the impartial, statistically calculated results of E CUBE a tremendous help. It provides information for environmental impact statements, cash flow projections required by senior lenders, and is useful in profit planning.

For further information, call your local Southern Union office or mail in the coupon below.

Energy Utilization Engineer
Representative
Southern Union Gas Company
1401 San Pedro, N.E.
Albuquerque, New Mexico 87102



Name _____

Organization _____

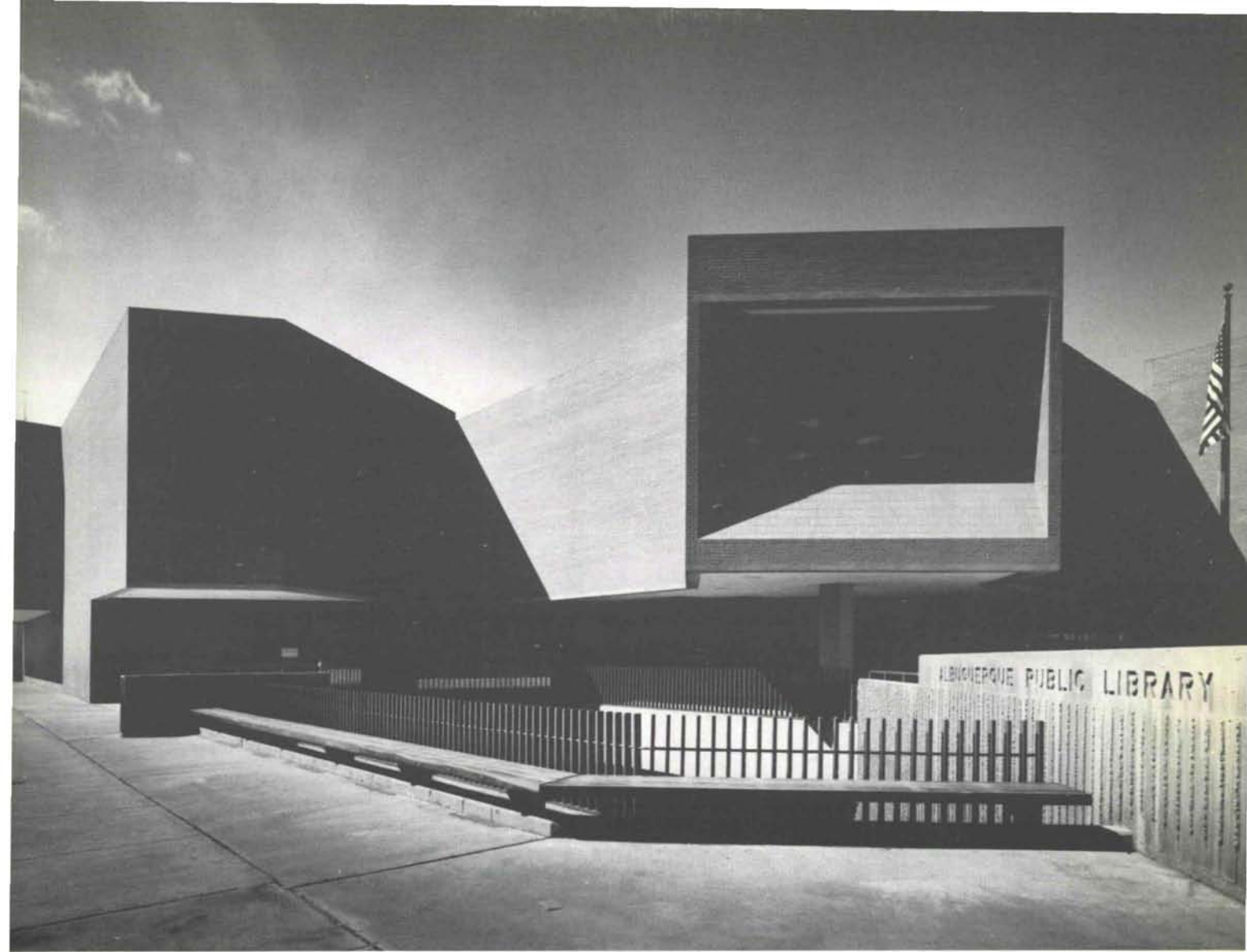
Address _____

City _____

State _____ Zip _____

**ENERGY CONSERVATION
UTILIZING BETTER ENGINEERING.**

SOUTHERN UNION  GAS COMPANY



ALBUQUERQUE PUBLIC LIBRARY

Stevens, Mallory, Pearl & Campbell,
Architects

MacCornack & Burns, Structural Engineers
Coupland & Moran, Mechanical Engineers
Uhl & Lopez, Electrical Engineers
Shirley Hamilton, ASID, Interior Consultant

*"We really have something to
celebrate on the corner of 6th
and Copper."*

--Cathy Robbins

The architects statement:

Our design of the main building of the Albuquerque Public Library System began with a great advantage which too many new buildings lack — an architecturally sophisticated client. The Director and staff, keenly aware of their problems, were determined that their architect should solve them. Many new building programs are derived directly from an unconscious remodeling of the inadequate space which the client is using at the time of the formulation of program for the new building. Many other programs are too much influenced by other new buildings which, with a change here and there, could satisfy the client's immediate needs. In both cases the solution to the design problem is damaged by a mixing of program and solution which most often overlooks the rudimentary design issues. These pitfalls were avoided in the derivation of the program for Albuquerque's new library, a collaborative effort between the director of libraries, his staff, and the architect. The main library had been operating in a 1924 building designed for a population of 20,000. No one wanted a revised version of the existing building. Also, although the librarians travel a great deal and examine new library buildings, no one had encountered a new building which they wished to copy or even to be heavily influenced by.

"Everything which we are doing now we will probably be doing differently within ten years. Give us a building which will not get in the way of our need to change . . ."

"We want the busiest urban site which we can get, where we have a chance to relate to the greatest possible number of people. Give us a building which invites these people to come in. Give us the excitement of this urban location where we want it, but protect us from the noise and busyness where it gets in our way . . ."

"Give us a building which the City and the region will be aware of, and which people will want to come to see. Give us a friendly monument without domes or grand stairways — we can't afford them, and they would get in the way of changes which we are sure to need . . ."

"Most of the patrons will feel comfortable with a reasonably high noise level. Some will want as much quiet as possible. Give us as wide a range of reader environments as possible — open lounges, partially secluded carrels, closed study rooms, open courts sheltered from the noise and danger of the street . . ."

"Give us a New Mexico building, but use no false adobe. . . ."

These statements from pre-program conversations with Library Directors Don Reichman and Alan Clark reflect their extraordinary professional excellence as well as their awareness of the responsibility of the public library to the community. They also indicate a rare sophistication in regard to the

nature of architectural programming and the role of the architect in the processes of both program and design. The clients confined themselves to definition goals and requirements, and once the program was complete we confined ourselves to solving these problems.

In addition to their definition of a superb program, the clients gave us another vital advantage. They expected an extraordinary design from us and consistently expressed their confidence in our ability to achieve it. They provided the climate of calm optimism which enabled us to do the best work of which we are capable.

Before the program was finalized, we visited twenty of the most conspicuous new libraries in the country, all close to our program of 500,000 volumes and 500 patrons. We talked to the librarians, the architects, and the library users about the good and the bad aspects of their new buildings. One circumstance became dominant. Changes in library media and methods of handling it are so rapid and omnipresent that flexibility of interior space is the pre-eminent architectural requirement for providing continuously adequate and creative library services. Everywhere, we saw that this requirement had not been met. In every library which we examined there was a mixture of public spaces with fixed building elements. Stairways, monumental multi-story shafts of vertical space, elevators, ducts shafts, toilet rooms, etc., were scattered throughout the building — all logically placed in relation to the way the library was presumed to operate at the time it was programmed, and all based upon the assumption that the functions would remain about the same for the life of the building. We found expensive built-in equipment which had already been abandoned and departments which could not grow or change because of immovable building elements.

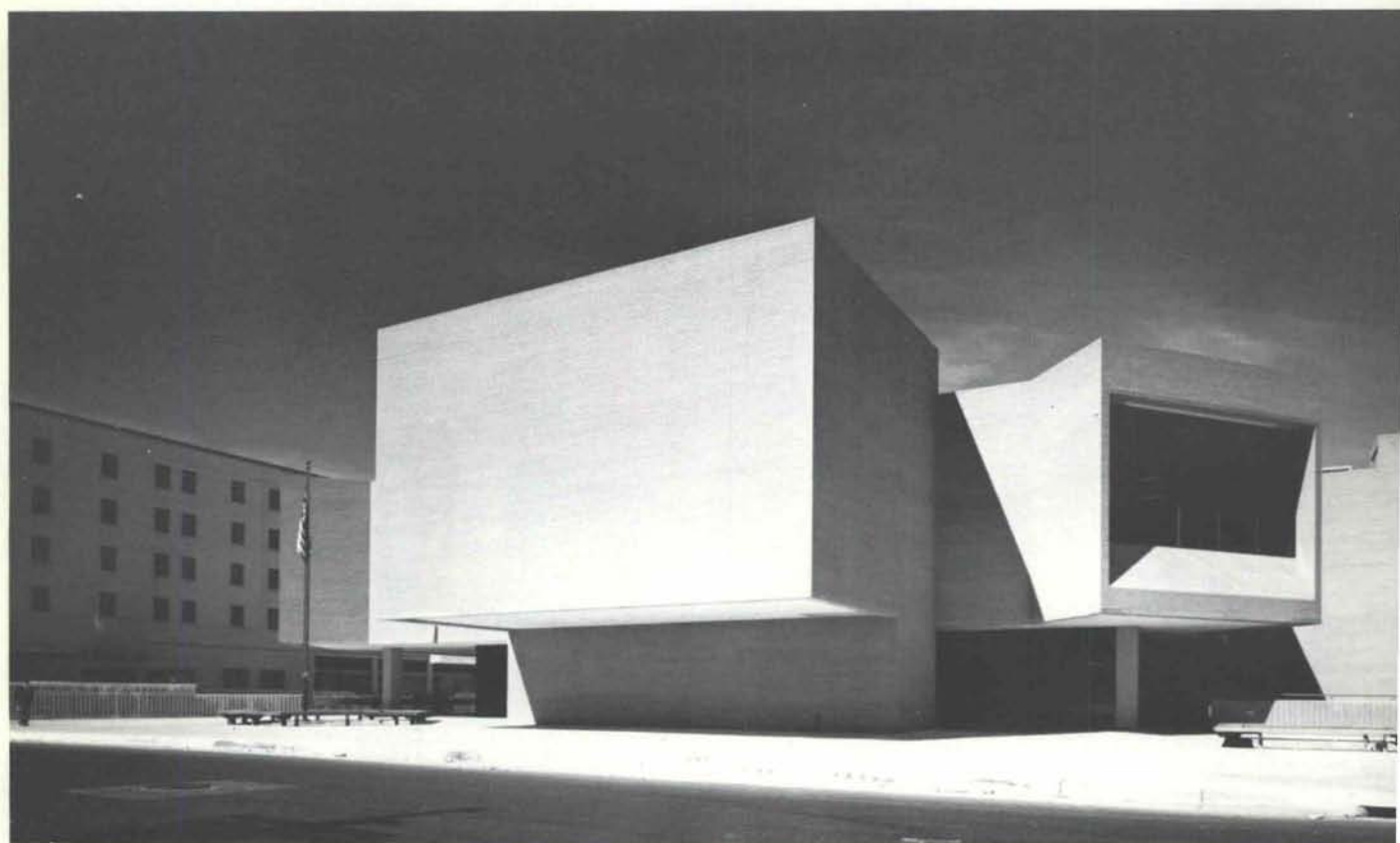
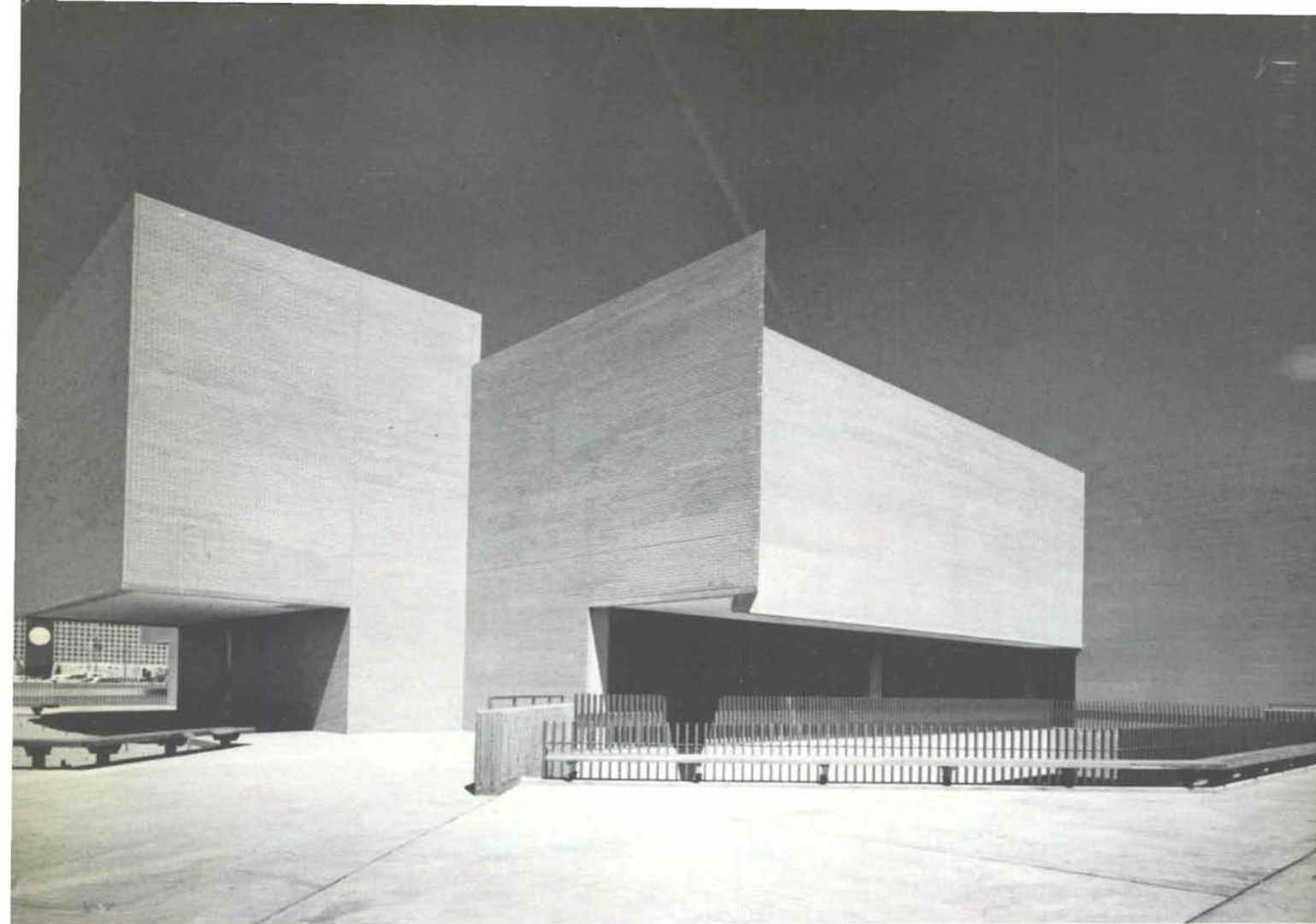
We agreed to strive for the most flexible public library in the country, and we probably have it. All walls in the master spaces are easily movable on 9'-0" coffered ceiling modules, each of which contains its own lighting, air supply and return, and connections to electrical, telephone and video systems.

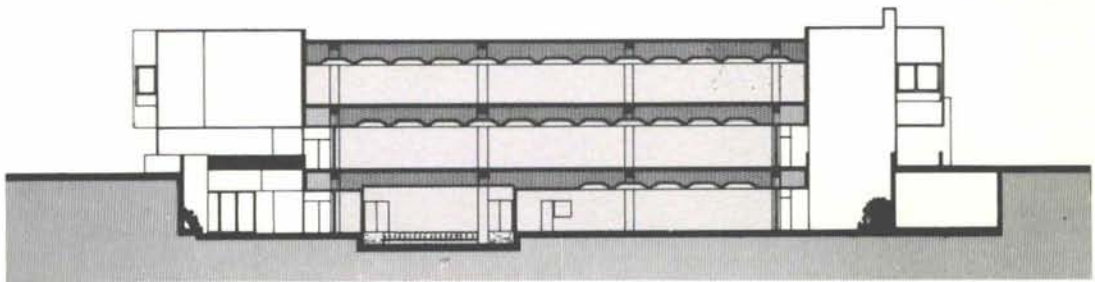
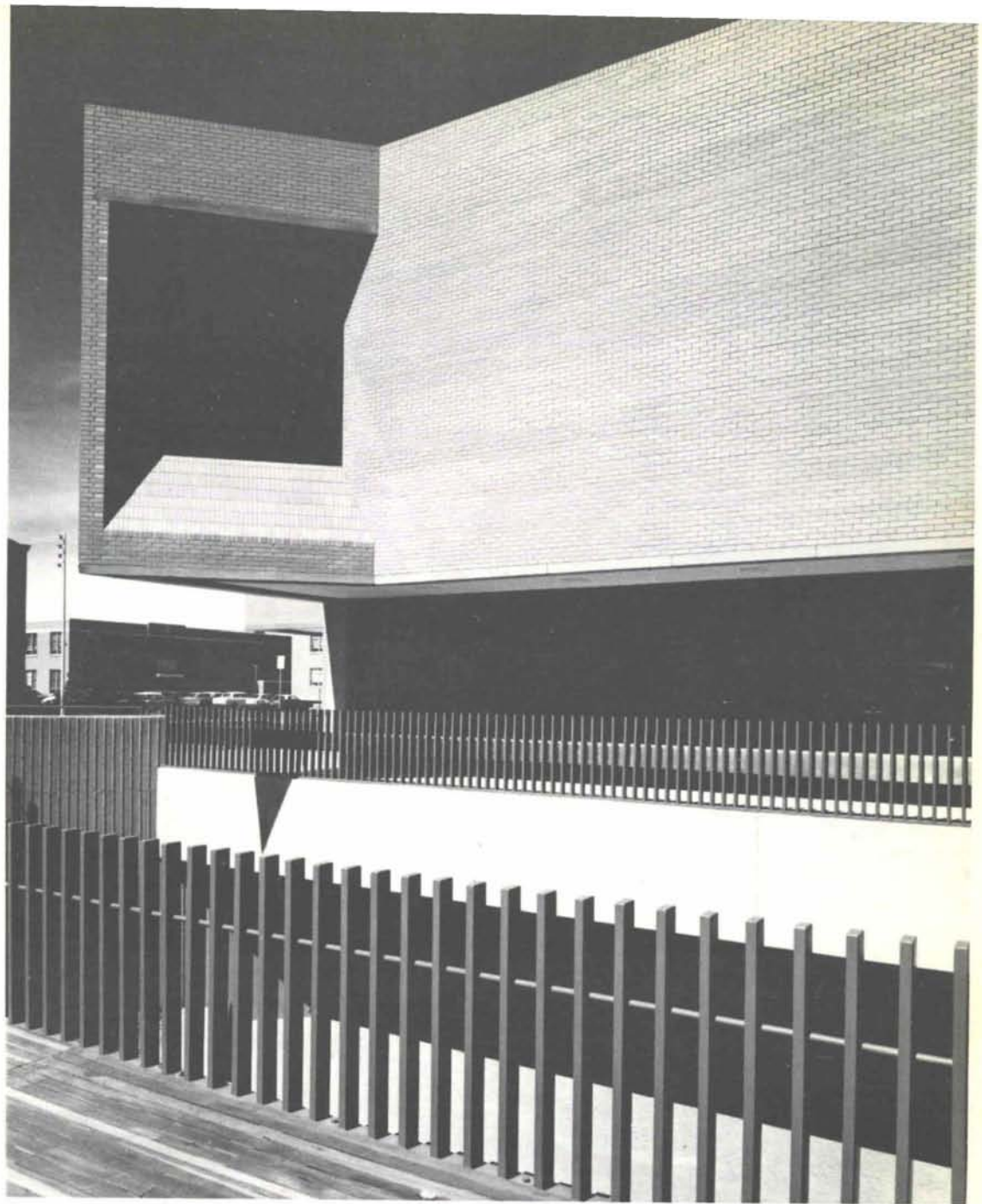
The program was finalized, and the downtown site at Fifth & Copper was acquired. Three levels were dictated by program, site, and budget. We agreed to strive for a rectangular public space on each level as large as the half block site permitted, and interrupted by nothing permanent except the structural columns, 36'-0" o.c. In order to keep the big spaces free we had to place all fixed elements in contiguous but separate buildings. We found ourselves talking in the clichés of *master* and *slave* spaces, coined by the Philadelphia school, but based upon practices at least as old as the earliest high school gymnasium with attached shower and locker rooms.

We allowed these servant buildings to be shaped

(Text continues on page 18)

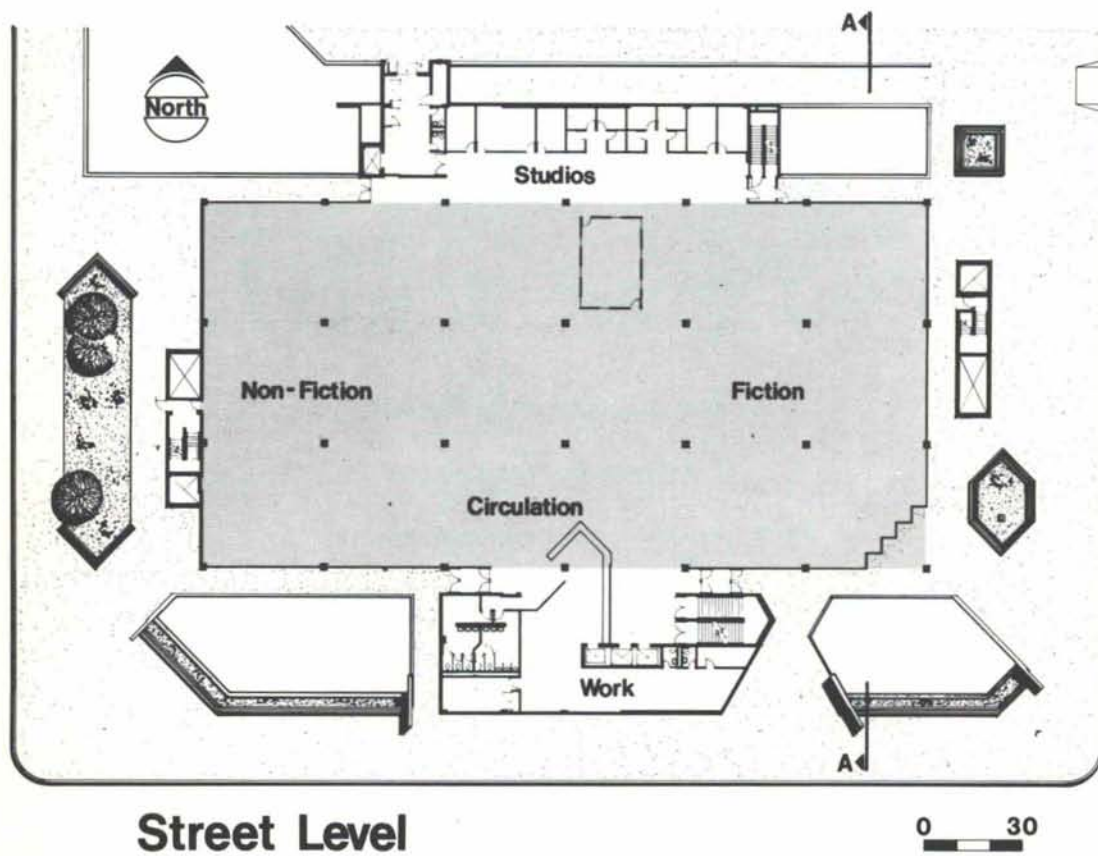
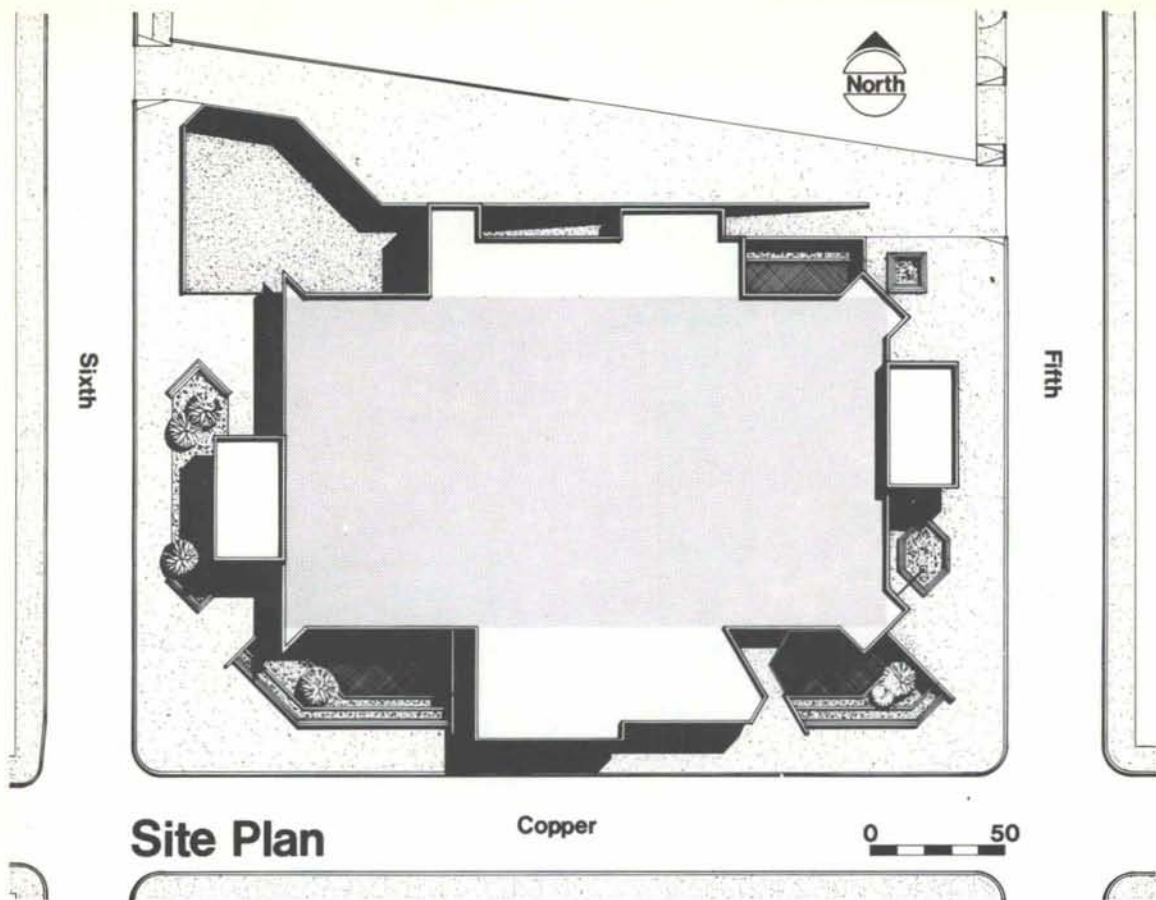


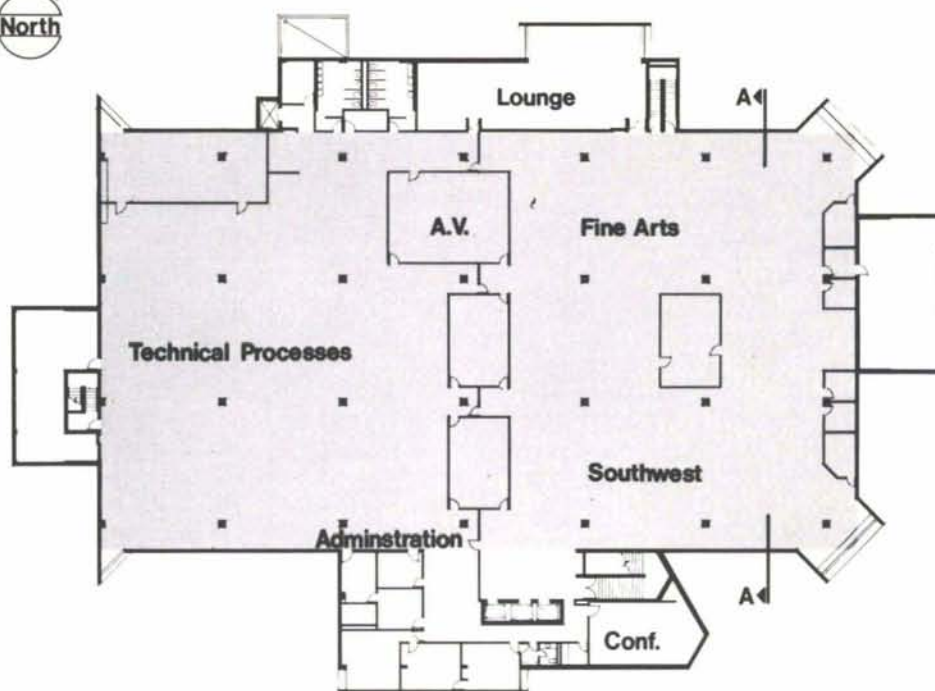




Section A-A

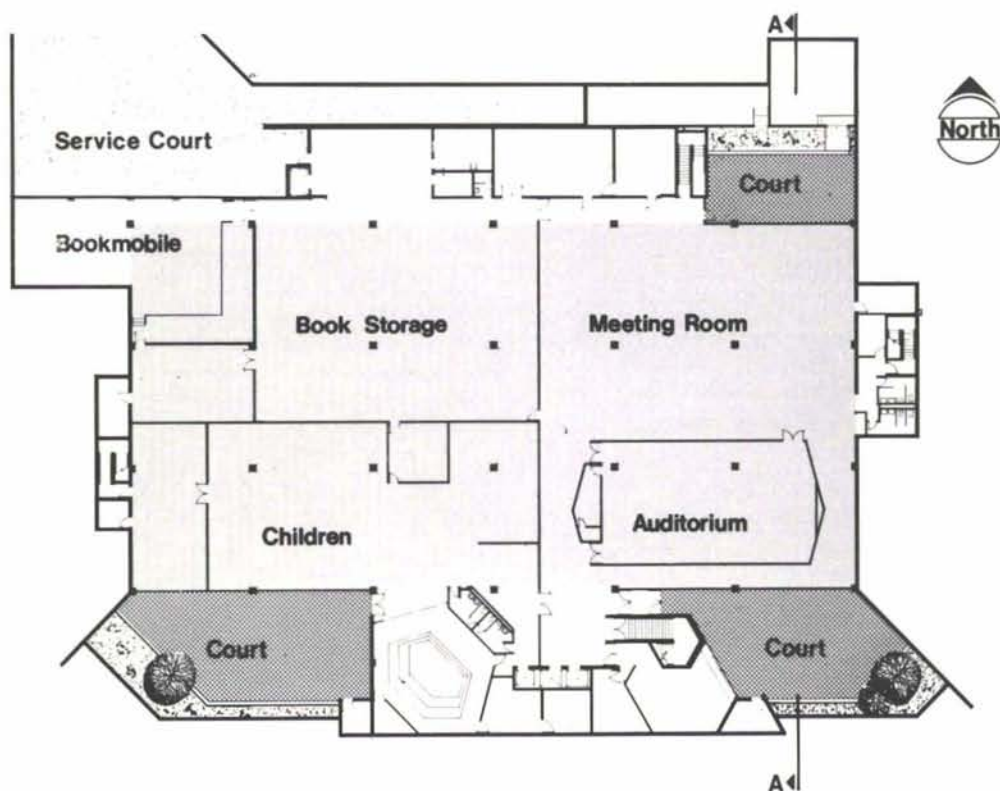
0 30





Upper Level

0 30



Lower Level

0 30

by the functions they housed, and by their relation to the site. The heating and cooling equipment buildings were located at east and west ends with their major volumes carried by cantilevers so that as much open space as possible could be given back to the street. Elevators, stairways, toilet rooms, top administration offices and conference rooms occupy the south projection. This mass was deliberately opposed to the otherwise rigid orthograph of the street pattern and the building's structure in order to emphasize the main entrance and the main public stairways and elevators. Fixed staff and service facilities occupy the north servant building, where the staff lounge is cantilevered over a ramp leading down to a service court at the northwest corner of the site.

In order to preserve the flexibility of the main volume of public space, these servant buildings had to project outside the central rectangle. The master volume was therefore forced back from the property lines. More of the site was thus preserved for public space outside the building and the servant projections added interest to the building's massing. This configuration of large volume set back from the streets as much as thirty feet gave us the opportunity of developing basement level courts around much of the building's periphery. Three of these courts form public reading areas, sheltered from the noise and danger of the busy streets. A fourth basement court at the northwest corner of the building is devoted to all vehicular service to the building, including bookmobiles. A great advantage to these courts, aside from the interest and ambience which they give the complex, is the fact that the public level below the street is not a basement, either in feeling or building code definition. A sprinkler system, more hazardous to books than fire, was not required.

The main volume is set back so far from the street that large glass areas, well protected from the sun by the overhanging upper level, can reveal the most popular library elements to the passing public without the distractions of noise and sun. Glass on the upper level where the main public collections are housed is used sparingly and with maximum concern for providing architectural drama as well as clarification of orientation in the 30,000 square feet of this largely brick enclosed space.

Although landscaping is waiting upon the optimum planting season, maximum consideration was given to planting, both at street level and in the below grade courts, the textured concrete walls of which were designed for evergreen vines. Deciduous native trees will dominate the ample street level planting beds. Wood benches surrounding lower courts at street level are located three feet out and two feet above the required railings so that shrubbery behind the seating safely minimizes the required 42" high railing and provides additional texture and protection for the courts below. Planting



beds within courts provide for ground covers as well as deciduous trees tall enough to relate to the upper level windows, which provide near views of the rapidly changing cityscape and distant views of the Sandia Mountains.

The building is a three story facility having approximately 104,577 sq. ft. of space with provisions for adding an additional floor of 34,000 sq. ft. Cooling is provided by two 150 ton centrifugal chillers having a double bundle condensor to allow heat recovery to heat the building. Heating, in the event the heat recovery from the chillers is inadequate, is provided by a gas fueled steam boiler. Air distribution is provided by two fan systems through a dual duct, medium velocity system. Humidification is provided for the entire building.

The poured in place concrete structure has post tensioned beams and slabs. All outside walls and most permanent interior walls are of smooth surfaced, tan colored brick. S. M. P. C.

and in the opinion of a user:

I'm no Ada Louise Huxtable, but here goes. With the opening of the new main branch of the Albuquerque Public Library downtown, Albuquerque has entered the big league of public buildings . . .

The Grand Opening on March 8 was a people's affair and, more than that, a children's affair. Our three year old delightedly tailed after Winnie, Eeyore and other Pooh characters who wandered about the children's area, compliments of Sears. Stories, mime, theater, lectures, animals, puppets, crafts demonstrations — all were open to the curiosity and excitement of the hundreds of kids and adults who jammed the library on that Saturday.

But the real star of the day was the building itself. Can a building make you feel good? Yes. We've all had the experience of entering a building and sensing immediately that the building is sharing with us, in a personal way, its soul and its identity. I've felt that way in, for instance, the Hermitage in Leningrad, the Metropolitan Museum in New York (especially when ascending the great staircase) and the New York State Theater in Lincoln Center (notwithstanding the impersonality which some planners and architects ascribe to the Lincoln Center complex.)

Albuquerque's new library, though constructed on a much smaller scale than these buildings, makes me feel good. As I wandered around the three levels in March, I couldn't help but silently compare the library to the Convention Center. (The library is everything the Convention Center is not — human, warm and inviting.)

(It's more than just the familiar look of books on the shelves.) The paintings and lithographs delight the eye. The bright furniture invites sitting and sprawling. Even the wide staircases are designed with real legs and feet in mind. Stevens, Mallory, Pearl & Campbell (the architects) must really like people; they've given us a building true to us as well as to their materials and architectural concepts.

The new building gives you differing perspectives of the world and your place in that world. At one moment, you are part of the quiet intensity of intellectual work. At the next moment, as you step into a lounge area, you are figuratively thrust through the giant windows into Albuquerque's busy urban scene.

If you're on the third floor, you get a bird's eye view of the city's ever-changing skyline set dramatically against the New Mexico landscape. If you're on the main level, you have a more mundane and homey view of the auto and pedestrian traffic on the street.

The building keeps you aware of the contrast between the interior and exterior environments, while it imparts to you a sense of yourself in those environments.

—On that rainy Saturday of the Grand Opening, the library was full of people, and that heightened

the excitement about the new building. Everyone was pleased as punch, and not a few citizens, including library director Alan Clark, walked around with silly grins on their faces.

The crowds reminded me that this branch, in the heart of the city, is an urban facility, that this library, with its newly widened range of community services, offers a public experience. The library opening brought home again the idea that the richness of city life derives from happenings and interpersonal relationships which simply are not possible in suburban or rural life and which enlarge one's vision of the world and self.

There are some who worry that "undesirables" from Central Avenue might intrude on the splendor of the downtown branch. But here is one who recalls her college days and the characters who haunted the New York Public and Columbia libraries. Those street scholars included some who actually read in the libraries and many who just used the reading rooms as convenient shelters. They caused no harm and added a bit of variety to the otherwise drab academic types who are often found in libraries. In any case, I hope no one chases out the grandfathers who now sit in the sun on Central Avenue but who just might find the library a more pleasant place to gather.

The new library tells us the direction we should be heading in. It proves that we can have truly exciting and beautiful modern buildings right here in River City — assuming we choose the right architects.

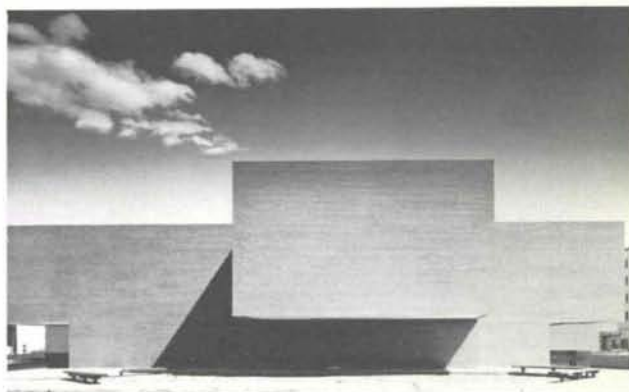
We have done it folks! We really have something to celebrate on the corner of 6th and Copper. All of us lucky people who live and/or work downtown are the chief beneficiaries. To those of you on Albuquerque's frontier — eat your hearts out! Or, better yet, try taking the bus downtown to visit the library. There's a stop just a block away.

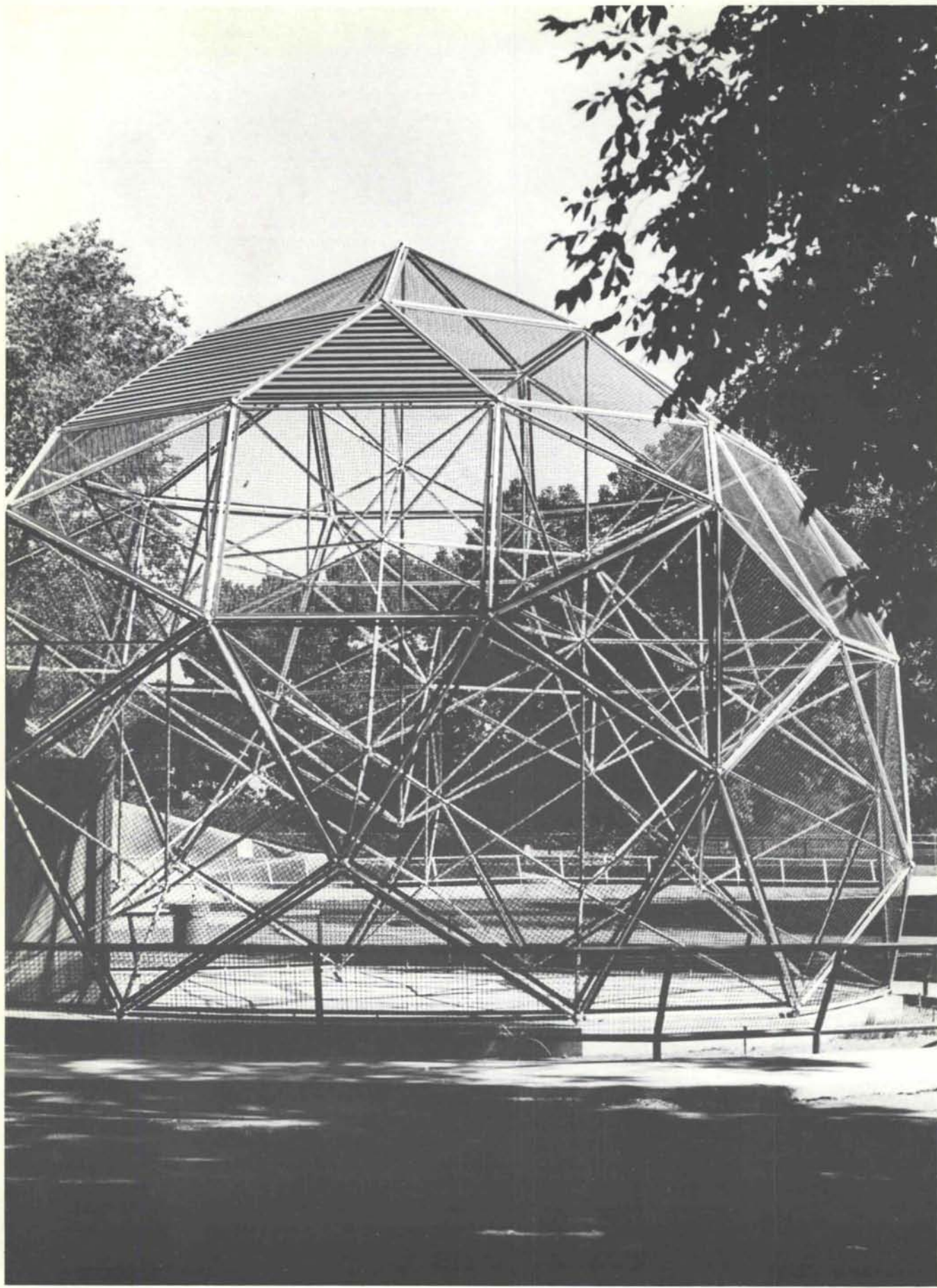
Cathy Robbins

Executive Secretary, Albuquerque Art League

Reprinted by permission from:

The New Mexico Independent, March 28, 1975





... STELLATED LESSER RHOMBICOSIDODECAHEDRON

It's not the name of a star shaped animal nor is it the nephew of a rhinoceros, but the term used for the structure of a beautiful new form at the Rio Grande Zoological Park in Albuquerque, New Mexico. The form is the home of two very excited gibbons and it will be known simply as the Gibbon Flight Cage.

The cage's geometric exterior shell is comprised of an aluminum tubular grid system, creating triangular openings that are filled with contrasting black framed wire mesh panels. The interior trussing of the cage, which is very much a function of the structure, develops a playground-like atmosphere that is ideal for the gibbons whose inherent skill is brachiating, which is the act of swinging from one tree or vine to another.

The Siamang Gibbons, the largest and by far the most vocal gibbons, come from the rain forest high in the mountains of Sumatra in Southeast Asia. They perform this skill of brachiating with all the freedom and self-confidence necessary when traveling from limb to limb high above the ground.

At first there was concern that the flight cage might be "too public," causing the gibbons to be frightened or shy. This concern became even greater to a few when, during the open house and before a very large crowd, it took a good twenty minutes of pleading and prodding by members of the staff to persuade the gibbons to leave the security of the winter home and venture into the cage. Once this was done and after they had journeyed to the top a few times, the gibbons began to swing from one structural member to another with all their natural grace and beauty.

As the gibbons would swing furiously around the cage they would let go with a hooting sound that is a sign of being extremely happy. So the gibbons are obviously happy and the visitors I talked to seem pleased. In fact one lady thought they were unbelievably ugly but I watched her smile at them, talk to them and for ten minutes try to coax one nearer to the side of the cage. Possibly the most important event stemming from the flight cage addition will be the behavioral studies of the gibbons while they now live in an atmosphere that allows them much more freedom and a true natural expression. *Ron Hill*

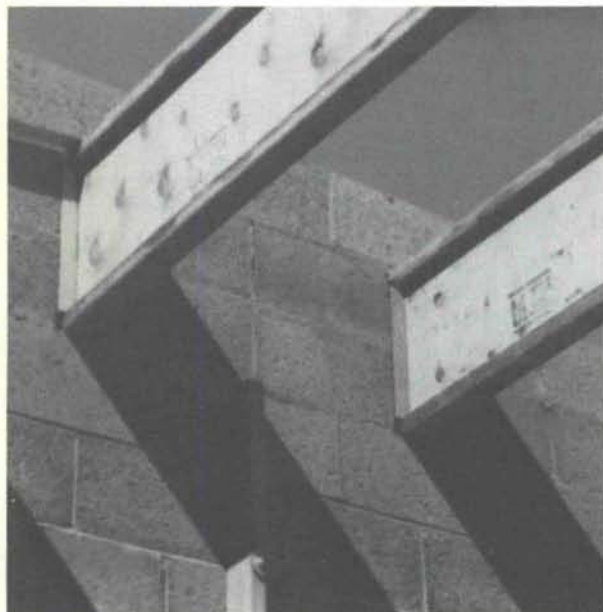
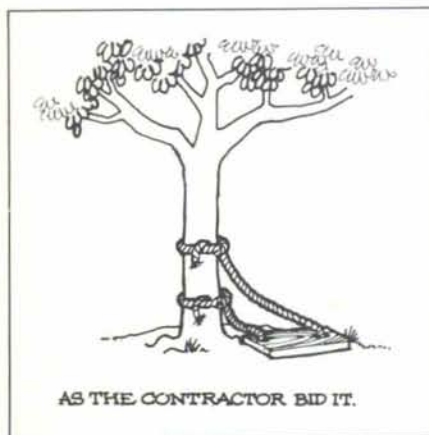
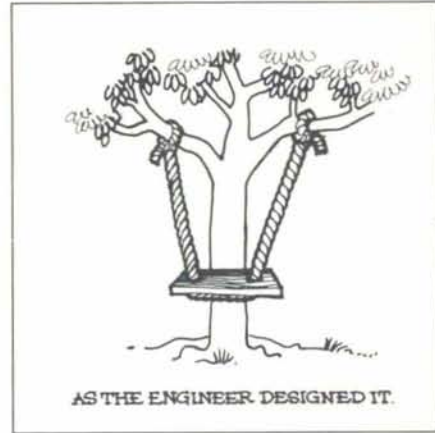
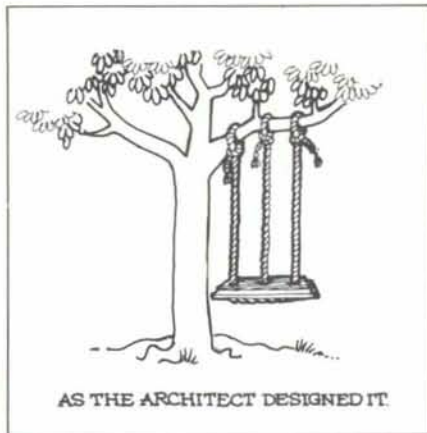
ARCHITECTS—Long & Waters

GENERAL CONTRACTOR—Gibson Constructors

GEOMETRIC SYSTEM—Zomeworks Corp.



all in a days work



"We found TJI far superior to other systems"

states Marvin E. Goldberg, El Paso general contractor: "In a warehouse-office building which we recently completed, we found the Trus Joist roof system to be far more economical than any of some half dozen systems that we investigated."

We found the erection and completion of the building with this system to be far superior to any other system we had considered using on this project."

Project: Office and Warehouse, El Paso, Texas
Contractor: Marvin E. Goldberg

George B. McGill & Co., Inc.

3530-C Pan American Fwy., NE
Albuquerque, New Mexico 87107
Telephone (505) 345-4501



FLEX SHIELD

waterproof flexible texture coating

Heavy texture coating for all types of
exterior/interior masonry surfaces.
DURABLE • FLEXIBLE • WATERPROOF

3 RECENT FLEX-SHIELD
applications in Albuquerque

TWO PARK PLAZA HIGH RISE
OFFICE BUILDING

ALBUQUERQUE INN

NATIONAL BUILDING

Wellborn PAINT

Mfg. Company, Albuquerque, N.M. 877-5050

ALBUQUERQUE TESTING LABORATORY

Sub-soil Investigations
For Structural and Dam Foundations

**Two Drills and Crews now
available for Prompt Service**

Laboratory Analysis and
Evaluation of Construction Materials

**All work done under the supervision
of Registered Professional Engineers**

532 Jefferson St. N.E. — P. O. Box 4101
Phone AL 5-8916 Albuquerque
Phone AL 5-1322 New Mexico

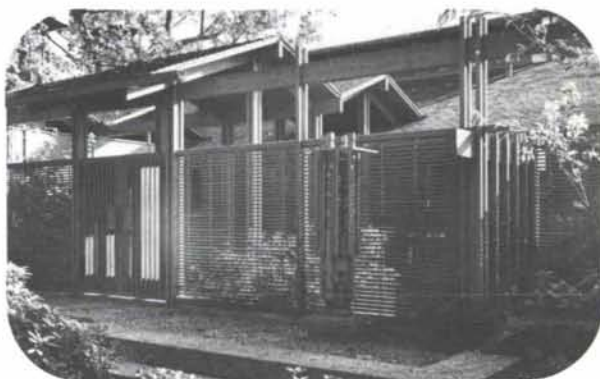
PLASTECO SKYLIGHTS

RESIDENTIAL, COMMERCIAL
& CUSTOM — SEE SWEET'S 7.8/PL

Now represented in New Mexico by

William W. Douglass, Inc.
Albuquerque, N.M. 87109
294-5326

VENTWOOD® pre-assembled wood panels



attractive

BEAUTIFUL FINISHED APPEARANCE
UNIFORM DIMENSIONS AND SURFACE
RICH TEXTURE OF MULTI-RAIL CONSTRUCTION

durable

DESIGNED TO RESIST WEATHERING
AVAILABLE PRESERVATIVE TREATED
LOAD BEARING

versatile

EASILY INSTALLED
USED STRUCTURALLY OR DECORATIVELY
INTERIOR OR EXTERIOR

Geo. B. McGill Co., Inc.
3530 - C Pan American N.E.
Albuquerque 87107
Phone 505/345-4501

McGill - Stephens, Inc.
4100 Rio Bravo St., Suite 320
El Paso, Texas 79902
Phone 915/544-4505

**Your
business
has to
change with
the times,
so why
have walls
that won't?**

*New
Mexico
Office
Furniture*



Steelcase Movable Walls

A wall that's only a wall is an obstacle. But a Steelcase Movable Wall System can form an office today or a conference room tomorrow or two or three work-stations the day after. In other words, it gives you unlimited flexibility in planning your office interiors. And that's a boon to any business.

6437 LINN AVE. N.E. • ALBUQUERQUE, NEW MEXICO • (505) 265-7841



**The first major
breakthrough
in effective
wine storage
in 2000 years.**

DON'T KILL YOUR WINE

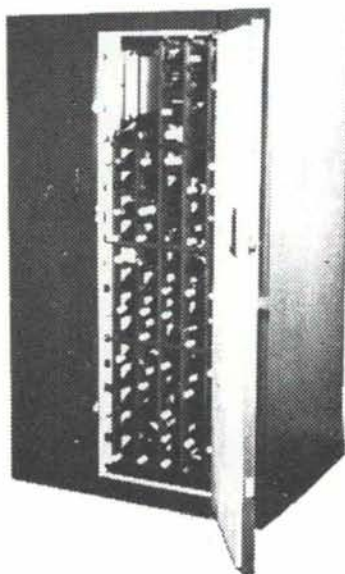
If you're proud of your wine, don't subject it to this well-lit, steam-heated, air-conditioned civilization of ours.

The Wine Vault is a completely self-contained room with walls, floor, ceiling and door lined with California redwood.

It stores your wine in total darkness at a constant temperature of 53-57 on individual redwood racks.

It's pre-fabricated, fits together with patented locking devices, and it's easily put together or taken apart in half an hour.

If you're proud of your wine, invest in a wine cellar any connoisseur would be proud of. The Wine Vault.



FOR COMPLETE INFORMATION CALL:

COOK'S BUILDING SPECIALTIES

414 SECOND ST., S.W. 243-5541

ALBUQUERQUE, NEW MEXICO • P.O. BOX 834, 87103

Congoleum® FINE FLOORS



PEERLESS™

CUSHIONED VINYL FLOORS. THE ULTIMATE IN CUSTOM FLOORS FOR COMMERCIAL INSTALLATION. THE WHITE SHIELD BACK ALLOWS INSTALLATION ON OR BELOW GRADE.

ASK TO SEE THE WIDE SELECTION OF BEAUTIFUL PATTERNS IN PEERLESS CUSHIONED VINYL SHEET GOODS. EXTRA RUGGED, YET SO BEAUTIFUL.



125 DALE, S. E.

P. O. BOX 2511, ALBUQUERQUE, NM 87125-15

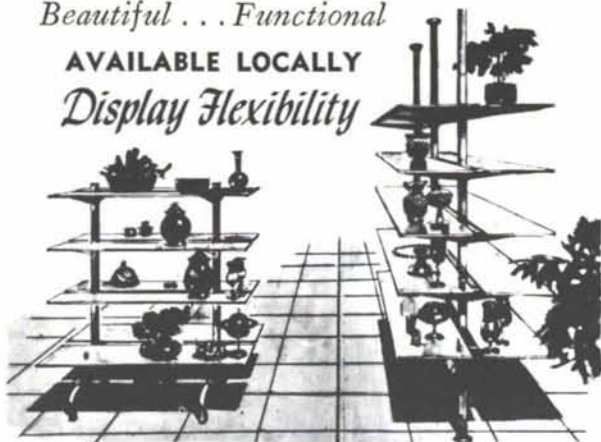
PHONE 877-5340

METAL STORE FIXTURES

Beautiful . . . Functional

AVAILABLE LOCALLY

Display Flexibility



REEVE FLOOR-TO-CEILING MERCHANDISER with glass shelves for new elevations in dramatic displays. Effectively used for back bays and area dividers. Tension poles are double slotted on two sides with internal adjustable spring action to maintain rigid tension. Unit can easily be moved to any location. **CLASSIC ISLANDER** with glass shelves to complement items on display, 30, 36 and 48 inch modules.

Exclusive New Mexico and West Texas distributor for full line of showcases, metal islands, wall units, shelves, peg board hooks, wire baskets, hang rod—in stock for immediate delivery.



CUSTOMCRAFT FIXTURES

4914 Pan American Freeway, N. E.
Albuquerque, New Mexico 87109
505 881-9200

See our showroom or write
for free color catalog.

YOU SAVE WITH NEW

Spectra-Glaze II GLAZED BLOCK WALLS

CONSTRUCTION — Build and finish in one operation . . . walls go up faster — one trade, large units lay up fast . . . thru-wall load bearing units eliminate expense of back up wall.

MAINTENANCE — No refurbishing ever. Permanent, sanitary, factory finish — cannot peel or blister . . . easy to clean and keep clean.

ENERGY — Excellent U-factors with lightweight block and insulating granular fill.

INSURANCE — Maximum security and protection at lowest cost, with fire-rated walls.

GOV'T REQUIREMENTS — Meet USDA and OSHA specifications for health, sanitation and safety.



© U.S. Pat. Off., Can. & other countries by THE BURNS & RUSSELL CO.

FEATHERLITE BLOCK CO., Box 489, Lubbock, Tex. 79408, 806/763-8202
FEATHERLITE BUILDING PRODUCTS CO., Box 9977, El Paso, Tex. 79990
CREGO BLOCK COMPANY, INC., 6026 Second St. N.W., Albuquerque, N.M. 505/344-3475

YOU SAVE TIME/YOU SAVE MONEY
WITH THE ECONOMY OF BLOCK & THE PERFORMANCE OF GLAZE

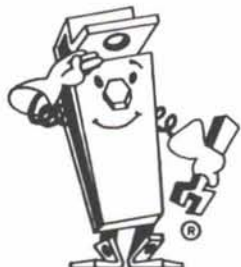
UNISTRUT *New Mexico*

**QUALITY PRODUCTS for
THE BUILDING INDUSTRY**

Space Frames

Telespar Tubing

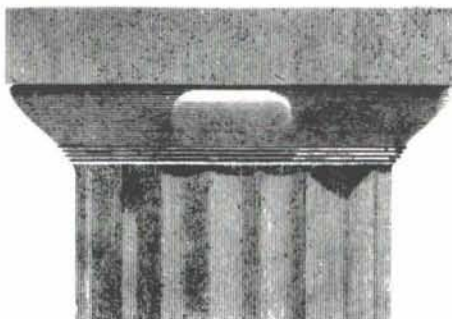
Metal Framing



MR. STRUT

4820 PAN AMERICAN HIGHWAY, N. E.
P. O. BOX 3128 (505) 881-0264
ALBUQUERQUE, NEW MEXICO 87110

THE DORIC CREDIT UNION



for

Architects, Engineers, their Employees, Wives,
and Children

is

open for deposits and loans
contact your chapter secretary
for membership cards or loan applications

915 Lead S.W. Albuquerque, New Mexico 87102



SUPPORT YOUR LOCAL AIA FORM SERVICE

We give a 20% discount to all AIA members and components on orders over \$10.00—

This is a service of the New Mexico Society of Architects.

AIA FORM SERVICE
P. O. BOX 7415
ALBUQUERQUE, NM
87104



new mexico architecture

nma

Published bi-monthly by New Mexico Society of Architects, American Institute of Architects, a non-profit organization.

Editorial Correspondence should be addressed to John P. Conron, Box 935, Santa Fe, N. M. 87501. 505 983-6948.

Editorial Policy: Opinions expressed in all signed articles are those of the author and do not necessarily represent the official position of the publishing organization.

No responsibility will be assumed by the editor or publishing organization for unsolicited contributions. Return postage should accompany all unsolicited manuscripts.

Subscriptions: Write Circulation, New Mexico Architecture, Box 7415, Albuquerque, N. M. 87104. Single copy \$1.00. Yearly subscription \$5.00.

Change of address: Notifications should be sent to New Mexico Architecture, Box 7415, Albuquerque, N. M. 87104 at least 45 days prior to effective date. Please send both old and new addresses.

Advertising: Send requests for rates and information to New Mexico Architecture, Robert G. Mallory, 115 Amherst Drive S.E., Albuquerque, N. M. 87106. 505 255-8668.

Additional copies of NMA available from John P. Conron FAIA/FASID, P. O. Box 935, Santa Fe, N.M. 87501.

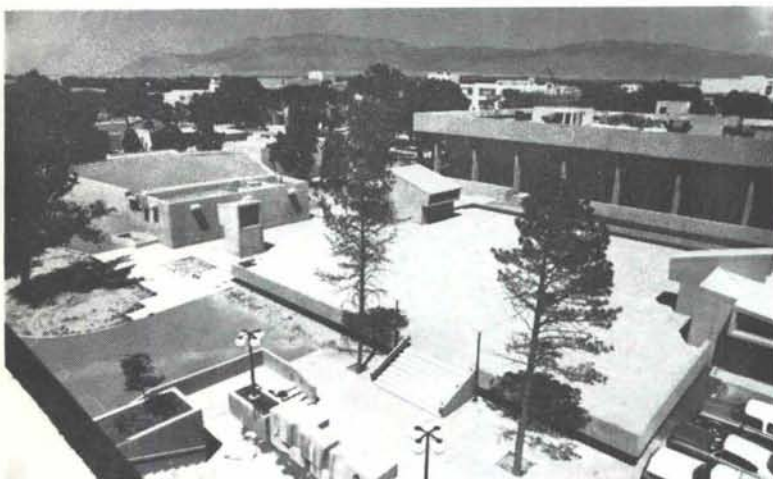
Printed By

Hall-Poorbaugh Press, Inc., Roswell, N.M.

INDEX OF FIRMS who make possible the publication of NMA and the page upon which their message may be found:

AIA Form Service	26
Albuquerque Testing Laboratory	23
Artesanos Imports Co.	6
Builders Block & Stone Co., Inc.	4
Century Roof Tile, Inc.	5
Cook's Building Specialties	24
Crego Block Co., Inc.	2
Cummings Co., Inc., Don J.	4
Customcraft Fixtures	25
Doric Credit Union	25
Douglass, William W., Inc.	23
Hanley Paint Mfg. Co., Inc.	6
Hydro Conduit Corporation	28
Mason Contractors Assn. of N.M.	27
McGill Co., Inc., Geo. B.	23
McGill Trus Joist	22
New Mexico Office Furniture	24
Prestressed Concrete Products, Inc.	5
San Vallé Tile Kilns	8
Southern Union Gas Co.	10
Southwestern Portland Cement Co.	26
Southwest Vermiculite Co.	7
Spectra-Glaze	25
Stryco Sales, Inc.	24
Summit Pressed Brick & Tile Co.	6
Unistrut New Mexico	25
University Bookstore	7
Wellborn Paint Mfg. Co.	23

Integrity and Beauty: The concrete facts of Southwestern life.



Physics Laboratories and Lecture Hall on the University of New Mexico Campus
Architect: Pacheco and Graham
Structural Engineer: Robert Krause
ChemComp Concrete supplied by Springer Corp.

When you want minimized shrinkage cracking for absolute structural integrity, durability and beauty, the concrete answer is ChemComp, Southwestern Portland's expansive cement. Check ChemComp's many advantages by writing for our free brochure: Box 392, El Paso, Texas 79943.



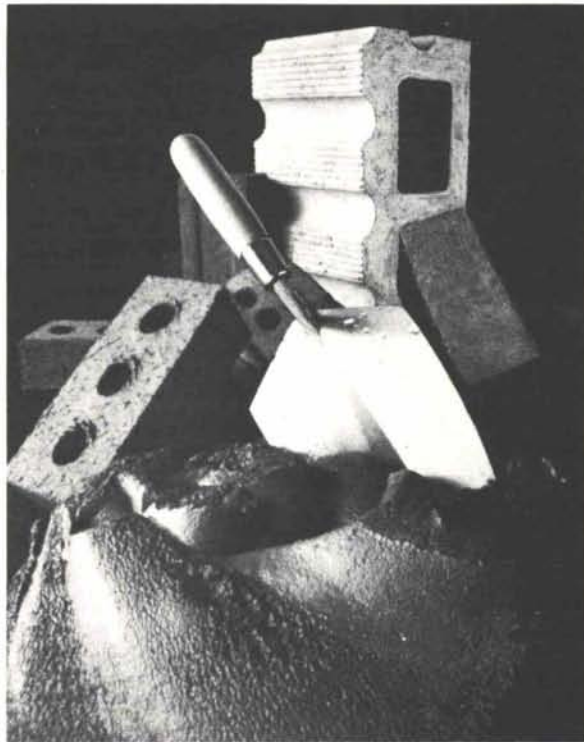
SOUTHWESTERN PORTLAND CEMENT COMPANY
MAKERS OF EL TORO CEMENTS / EL PASO, AMARILLO, ODESSA

Since the beginning of recorded time, the strongest, most beautiful, most economical and longest lasting buildings have been built of masonry.*

By bricklayers.

It is as true today as it will be tomorrow.

When you build with masonry, you build for keeps.



* Brick. Ceramic Tile. Concrete Block. Marble and Granite. Plaster. Stone. Terrazzo.

MASON CONTRACTORS ASSOCIATION OF NEW MEXICO

Bulk Rate
U. S. Postage
PAID
Roswell, N. M.
Permit No. 47

Vol. 17, No. 5



TWO PLUSES FOR PRECAST CONCRETE

Speed of construction and adaptability to existing building appearance were pluses for precast concrete panels in the new gymnasium addition at Jefferson Junior High School in Albuquerque.

The new structure measures 105.5' x 92' plus a passageway between the two buildings.

Architect—
LOUIS G. HESSELDEN, ARCHITECT

Engineer—
MacCORNACK & BURNS

Contractor—
EDWIN F. CILLESSEN, GENERAL
CONTRACTOR, INC.



HYDRO CONDUIT CORPORATION

2800 SECOND STREET, SW - ALBUQUERQUE, NEW MEXICO 87103