




# new mexico architecture

November-December 1973


50¢

## SUREWALL

SURFACE BONDING CEMENT



**STACK**  
CONCRETE BLOCKS  
WITHOUT MORTAR



**TROWEL**  
PREPARED  
SURFACE BONDING CEMENT

- BOND blocks with greater strength than mortar
- BOND blocks with all active finish
- PROTECTS walls from water penetration
- Easy to use. Just add water.

**TROWEL MIX**  
50 lbs. net wt.

# Do your own thing with our bag

... without mortar! If your thing is making more profits, then our versatile green bag is your bag, too. All of the projects shown were built with SUREWALL® Surface Bonding Cement — a new mortarless method of bonding concrete and cinder blocks that's *stronger than mortar*. SUREWALL's strength lies in a process which embeds glass fibers in a cement matrix. When mixed with clean water, it is troweled onto the surface of concrete blocks that have been dry-stacked in a running bond pattern. In one easy application, using less skilled labor, a wall is bonded with a moisture-resistant, stucco-like finish on each side — no joints or block shadows show.

SUREWALL is the attractive and sensible way to lower soaring building expenses. For more information on cost-cutting, time-saving, money-making SUREWALL Surface Bonding Cement, write or call:

## CREGO BLOCK CO.

P.O. Box 6025      6026 2nd Street NW  
Albuquerque, New Mexico 87107  
Telephone (505) 344-3475





vol. 15 nos. 11 & 12

The entire "staff" of New Mexico Architecture takes this opportunity to wish all of you a most convivial, sportive, festive, frolicsome, gleeful, jovial, jocular, uproarious, rip-roaring, rollicking, Falstaffian Yuletide!



A Merry Christmas  
to you all!!

# nma

nov-dec 1973 • new mexico architecture

## NMA News 9

The International Style  
in New Mexico, additional information  
1974 New Mexico AIA Officers

## The Rio Grande Zoological Park 11

A Continuing Transition and  
a Barn Raisin'

## Sandia Plaza Branch, 1st National Bank, Albuquerque 15

Antoine Predock, AIA, Architect

## Index to Advertisers 26

(Cover—An Albuquerque Zoo Resident—Robert Nugent—Photographer)

—Official Publication of the New Mexico Society of Architects, A. I. A.—

### Society Officers

President—Van Dorn Hooker  
Vice President—John P. Conron  
Secretary-Treasurer—Richard Waggoner  
Director—Jess T. Holmes, Jr.  
Director—W. Kern Smith  
Director—Robert C. Campbell  
Director—Urban C. Weidner, Jr.  
Director—Ted C. Luna  
Director—Charles E. Nolan, Jr.

### Commission for NMA

John P. Conron—Editor  
Bainbridge Bunting—Editorial Consultant  
Robert G. Mallory—Advertising  
Mildred Brittelle—Financial  
Secretary, Circulation  
John W. McHugh  
James M. Murray, III

# PLASCO

**INC. ALBUQUERQUE**

mirror closet doors • shower doors & compartments • complete store front department patio doors • fiberglass shower stalls & tubs • plate glass mirrors • bathroom accessories • medicine cabinets screen & storm doors • glass & aluminum products • acrylic lavatories & tubs • complete screen service . . . . .

## HANLEY PAINT

**BEAUTY AND PROTECTION**

Serving New Mexico architects & builders  
& the entire Southwest for over 35 years.

**AMBASSADOR PAINTS . . .** Finest quality, easy-clean interior protection. **SUNFOE . . .** Exterior paints, climate-designed for the Southwest. **OLD PRO . . .** Easy on, long-lasting professional paint products.



### HANLEY PAINT MFG. CO., INC.

Albuquerque, New Mexico  
1214 San Pedro N.E.  
265-1542

El Paso, Texas  
1531 Magoffin — 532-6921  
9054 Dyer — 755-3353  
7636 Gateway East  
591-6031

## PRESTRESSED CONCRETE

**SPEEDY ERECTION—LASTING SERVICE**

Precast-prestressed concrete single tee roof members were used for fast erection and lasting strength on the Menaul drive-in facility for Albuquerque National Bank. The entire structure was erected in three days.

5,300 sq. ft. of single tees were used spanning 56 feet between supporting walls. Prestressed concrete—the practical building material.

ARCHITECT—  
KRUGER, LAKE & ASSOCIATES

CONTRACTOR—  
COLE-TEMPLETON, INC.

**PRESTRESSED**   
**CONCRETE PRODUCTS, INC.**

1304 Menaul Blvd. N. E., Albuquerque, N. M. 87107 (505) 345-2536







## Outside heat raises inside cooling costs. Zonolite can help reduce the problem at its foundation.

Look into Grace-Zonolite® Masonry Fill Insulation. It's incredible stuff. To put it another way, it's a lightweight, free-flowing, water-repellent, vermin-proof, rot-proof, fire-proof, sound-deadening, inorganic, granular vermiculite!

Year after year, it can deliver savings in cooling and heating dollars that far exceed the initial cost of the fill.

Other virtues? Yep.

Zonolite® Masonry Fill Insulation reduces sound transmission 20% to 31%. It increases a 2-hour fire rating to 4. It pours in at the rate of 28 square feet per minute. It's acceptable in FHA-financed housing.

Want all the details, test data, specifications, and such?

Say the word!

"U" VALUES—concrete block walls			
Wall Thickness, Inches	Type of Block	Block Only	
		Uninsulated	Insulated
6	Lightweight	.40	.26
	Heavyweight	.33	.17
8	Lightweight	.53	.36
	Heavyweight	.33	.12
12	Lightweight	.46	.25
	Heavyweight		

**ZONOLITE** **GRACE**  
SOUTHWEST Vermiculite Co.  
BOX 6302 ALBUQUERQUE



# Just say Grace.

## FROM CONCEPT TO COMPLETION



Griggs Exclusive  
Push Back Chairs

## Chairs Are For Sitting

Large people, little people, quiet people, squiggly people. Particular people.

For assembly or auditorium seating to keep creatures of comfort happy, we ask you to sit down on the job and judge!

Griggs Push Back Chairs are beautiful strong, comfortable and meant to welcome the contours of particular people.

Architects regularly use our design consultation services for:

Science labs / Offices / Artrooms / Dormitories / Libraries / Auditorium seating / Home Economics labs / Gymnasiums

## UNIVERSITY BOOK STORE ALLIED SUPPLY CO.

2122 Central, SE  
Phone 243-1776  
Albuquerque, N. M.

# AGP

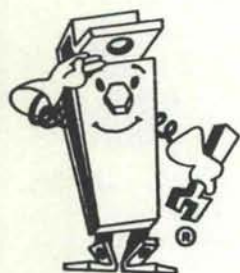


*Home of the  
Concrete Giant!*

**DEDICATED TO QUALITY  
AND SERVICE**

**ALBUQUERQUE GRAVEL  
PRODUCTS COMPANY**

**600 JOHN ST. SE**



MR. STRUT

## UNISTRUT

NEW MEXICO

**METAL FRAMING  
TELESPAR TUBING**

movable partitions

wire mesh partitions

toilet partitions

steel shelving and racks

4820 PAN AMERICAN HIGHWAY, N.E. • P.O. BOX 3128  
ALBUQUERQUE, NEW MEXICO 87110  
PHONE 505 345-2405

# Goodrich Roofing Co.

A CORPORATION

Serving New Mexico For Over 20 Years

**NO JOB TOO LARGE—OR TOO SMALL  
ALMOST EVERYTHING IN ROOFING  
AND SHEET METAL**

**GOODRICH ROOFING IN  
ALBUQUERQUE FOR GOOD . . .**

OUR CREDENTIALS . . . THOUSANDS OF  
SATISFIED CUSTOMERS

**FREE ESTIMATES**

**(505) 345-1854**

**3402 Stanford Drive, N. E.  
ALBUQUERQUE, NEW MEXICO**

*Happiness is having a good roof by Goodrich*

**FOR THE FINEST INTERIOR  
ACRYLIC LATEX PAINT  
for WALLS AND WOODWORK**

**ONECOAT COVERAGE  
GUARANTEED FOR 5 YEARS  
HIGHLY WASHABLE**

specify **Wellborn** new  
**MASTERPIECE**



# Wellborn PAINT

Albuquerque, N. M.

MFG. CO. 877-5050



# OFFICE FURNITURE

- HERMAN MILLER
- KNOLL ASSOCIATES
- JENS RISON
- AMERICAN DESK
- REPUBLIC STEEL DISTRIBUTOR
- ALL-STEEL EQUIPMENT

5021 Lomas Blvd., N.E.

Albuquerque, N. M.

87110

268-4307



*design  
interiors, inc.*



PROFESSIONAL  
INTERIOR  
PLANNING

RETAIL &  
CONTRACT SALES

BUSINESS  
FURNITURE  
LEASING

**DISTINCTIVE OFFICE FURNITURE & UNUSUAL FURNISHINGS FOR THE HOME**



## ARCHITECTS

There is no substitute for a good color coat stucco finish! However, a good color coat stucco finish depends on:

- The best materials
- Good building detailing
- Good specifications
- Proper application

We have the best stucco materials, which are specifically formulated for the Southwest and Rocky Mountain regions, and we can furnish you with the proper specifications. But only you can provide the proper detailing and close inspection to assure proper application.

Take advantage of the many unique textures and versatile applications of real color coat stucco—contact us for specifications and exciting new ideas.

*El Rey*

**STUCCO COMPANY, INC.**

4100 Broadway, S. E.  
Albuquerque, N. M.  
P. O. Box 6122  
505 877-7967

**TELEData INC.**

A TIME SHARE COMPUTER SERVICE

SERVING THE CONSTRUCTION INDUSTRY THROUGHOUT THE SOUTHWEST

- |                                   |                            |
|-----------------------------------|----------------------------|
| ● PAYROLL                         | ● APARTMENT MANAGEMENT     |
| ● GENERAL LEDGER                  | ● CONDOMINIUM MANAGEMENT   |
| ● JOB COST ANALYSIS               | ● INVENTORY CONTROL        |
| ● CRITICAL PATH METHOD (C. P. M.) | ● ENGINEERING APPLICATIONS |

We specialize in designing programs to fit your business.

With Time-Sharing, you never wait for the computer, its ready when you are. Your jobs can be run when you need them; 7 days a week, 24 hours a day.

Computer time available by the hour, day or month.

PHONE: (505) 266-8190

WRITE: TELEDATA, INC., P. O. BOX 30162, ALBUQUERQUE, N.M. 87110

This cost-cutting  
tool can save you  
20% on your  
next building's  
walls.

It's the mason's trowel.  
And in the hand of a skilled craftsman,  
masonry can end up costing less than  
metal, glass or precast concrete.

Less initially. And less in the long  
run, too, since masonry needs less  
maintenance.

What's more, because masonry  
buildings aren't as expensive, you can  
save on finance charges. And on real  
estate taxes.

But wait. Let us prove it.

With a free comparative cost study,  
"Walls to Save Dollars." Mail us the  
coupon. We'll send the study.

It's chock full of information that can  
save you a bundle next time you build.

Which makes the study a cost-cutting  
tool, too.

**INTERNATIONAL  
MASONRY INSTITUTE**

823 Fifteenth St., N.W., Washington, D.C. 20005  
(202) 783-3908



I want to cut costs. Send me the tool, "Walls to Save  
Dollars." Mail to International Masonry Institute, Suite  
1001, 823 15th Street, N. W., Washington D. C. 20005

Name \_\_\_\_\_

Title \_\_\_\_\_

Company \_\_\_\_\_

Address \_\_\_\_\_

City \_\_\_\_\_

State \_\_\_\_\_

Zip \_\_\_\_\_

Nature of business \_\_\_\_\_



**MASON CONTRACTORS ASSOCIATION OF NEW MEXICO**



## THE INTERNATIONAL STYLE IN NEW MEXICO ADDITIONAL INFORMATION



The author of "Early Modern Architecture in New Mexico," printed in the last issue of NMA, was unable to determine the architects of some of the houses discussed. Since the magazine has been published additional information has come to light—thanks to some searching and telephoning by Mildred Brittle.

The house at Coal and Hermosa S.E. was designed by William Burke, AIA, in 1937 for Walter C. Raabe.

Tom Benton did indeed design and build five houses on Ridgecrest Drive S.E., including the three pictured on pages 14 and 15, Sept./Oct. NMA. (Note: figures 2 and 4 on pages 14 and 15 of that Sept./Oct. issue are all on *Ridgecrest Drive South East*.) Mr. Benton was also an architect; he was

registered in 1933 and held registration number 34.

The house, left, and pictured on page 8 of the Sept./Oct. issue is at 312 Laguna SW. It was built by Albuquerque Contractor Charles Lembke for his own home; he sold it sometime later. Mr. Lembke says that he picked the design from an architectural magazine, but changed it greatly before construction; the original had been designed by an Amarillo architect for an Amarillo, Texas client.

### 1974 OFFICERS FOR NEW MEXICO AIA

During the past few weeks the various New Mexico components of the American Institute of Architects have held elections for their 1974 officers.

### NEW MEXICO SOCIETY OF ARCHITECTS

President, John P. Conron; Vice-President, Richard Waggoner; Secretary-Treas. Robert C. Campbell.

Directors: Jess T. Holmes, Jr., W. Kern Smith, Ted C. Luna, Kenneth S. Clark, FAIA, Charles E. Nolan, Jr., Bill J. Waters, Van Dorn Hooker.

### ALBUQUERQUE CHAPTER, A.I.A.

President, Bill J. Waters; President-Elect, Eugene L. Hunt; Secretary, Loren E. Mastin; Treasurer, Joseph D. Long.

Directors: Wayne G. Andrews, Channell Graham, Jess T. Holmes, Jr.

### SANTA FE CHAPTER, A.I.A.

President, Kenneth S. Clark, FAIA; Vice-President, Robert J. Strader, Jr.; Secretary-Treasurer, John W. McHugh.

Directors: Ted C. Luna, John P. Conron.

### NEW MEXICO SOUTHERN CHAPTER, A.I.A.

President, Kern Smith; Vice-President, Wilbur T. Harris; Secretary-Treasurer, Joel Stout.

Directors: Charles E. Nolan, Jr., Richard Waggoner.



**REMEMBER YOUR  
AIA FORM SERVICE  
P. O. BOX 7415  
ALBUQUERQUE, NM  
87104**

## For Your Lawn Sprinkler Needs NEUMARK CO., INC.

4121 Edith, N.E. • Albuquerque, New Mexico 87107  
(505) 344-8088

Over twenty years experience in design, distribution and installation of quality lawn sprinkler systems.

featuring

Weather  matic

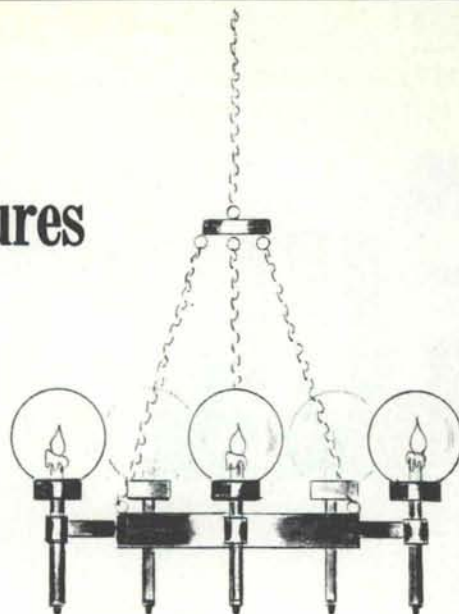
Sprinkler Equipment



**DESIGN • SUPPLIES • COMPLETE INSTALLATIONS**

Would you believe  
reasonably priced custom  
manufactured lighting fixtures  
at your fingertips?

Luminous ceiling systems—  
Contemporary, traditional,  
Spanish, early American  
fixtures. The limitation  
is your imagination.



MANUFACTURERS OF LIGHTING FIXTURES

**custom electrical products, inc.**

2420 Monroe N. E. / p. o. box 3928 / Albuquerque 266-7804

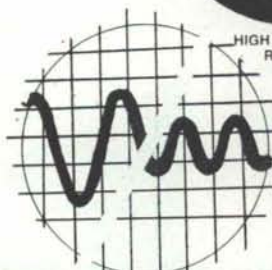


SPRAY INSULATION-  
ACOUSTICAL SYSTEM

for its . . .

**Keers, Inc.**

3323 STANFORD, N. E.  
ALBUQUERQUE, NEW MEXICO



FIRE RETARDANT

ARCHITECTURAL BEAUTY

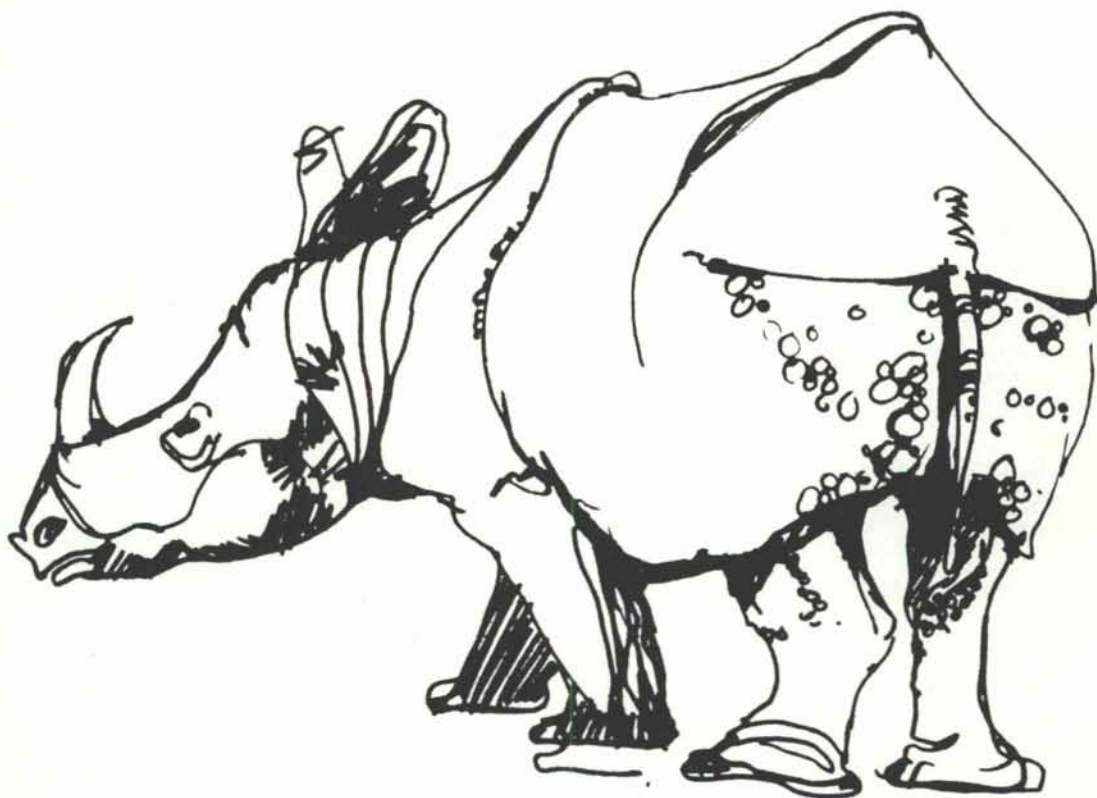
EASE OF APPLICATION



# The Rio Grande Zoological Park

## a continual transition

by Channell Graham, AIA



How do you judge a zoo? By the total number of animals in the collection or the total number of species represented? Or is a zoo judged by its environmental and architectural quality? The answer is, of course, dependent upon your point of view. In any scale or evaluation the Rio Grande Zoological Park receives moderate to good marks for its existing complex and high to superior in its potential. From the standpoint of completeness of the animal collection, the zoo gets a good rating, due to the outstanding species of hoofstock. The sable and roan antelopes are outstanding collections in terms of American zoos, and the Elburz Red Sheep is unique in the zoos of the world. Further, the zoo rates very high in the estimation of the citizens of Albuquerque and throughout New Mexico.

Dr. Bruce Stringer, Director of the Rio Grande Zoo feels that the zoo is in a continual state of transition and places a great emphasis on a creative breeding program to enlarge and enhance the number of species shown at the zoo. "Within two years the zoo will be a major source for such exotic species as the *kudu* and the *gemsbok*. Sales and trades of animals will become a major factor in our development."





## 👉 A BARN RAISIN' 👈

The tragic fire which resulted in the loss of a part of the children's zoo area, including its red barn, on July 31 has resulted in a strong positive reaction throughout New Mexico's construction industry. With a massive donation of services, labor and materials a ground breaking ceremony for a new barn occurred on October 28.

The real excitement of this project, however, has been in the sense of community involvement. The *Albuquerque Journal* has led a campaign for reconstruction of the barn and related facilities. The Albuquerque Chapter of the American Institute of Architects along with a host of other professional organizations, volunteered services for its design and construction.

The original barn had been constructed in 1961 from city funds and a \$3000 contribution by the Junior League of Albuquerque. It housed small and sick animals and provided shelter for the zoo's turtles and tortoises. The fire killed about 27 small animals, including birds, squirrels and monkeys.

The new barn will house seven open stall exhibits for touch contact with the animals and five glass enclosed exhibit cages for more exotic species. A keepers area will allow for food preparation and storage. A circular stair brings the public to an upper floor containing a meeting room and office space. The overall size of the building is 40' x 60' and the construction is primarily of heavy timber and exposed wood.

Preliminary design was through Pacheco and Graham, Architects, and Jerry Torr Associates prepared the working drawings.

Monies and donations have arrived from civic groups, school children, piggy banks. This effort has brought a realization of the true value of our Rio Grande Zoo.

Professional organizations offering volunteer services include:

*American Institute of Architects*

*Associated General Contractors*

*New Mexico Consulting Engineers Council*

*Mechanical Contractors Association*

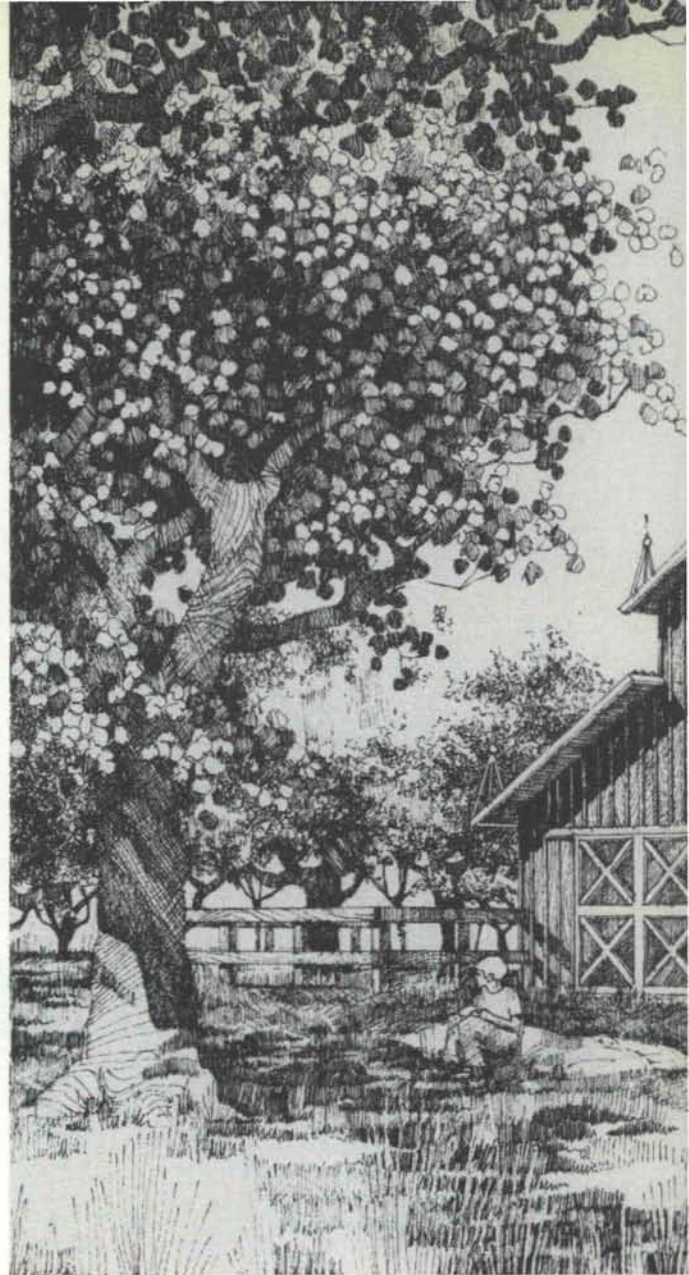
*National Electrical Contractors Association*

*Albuquerque Chapter of the Painting and  
Decorating Contractors of America*

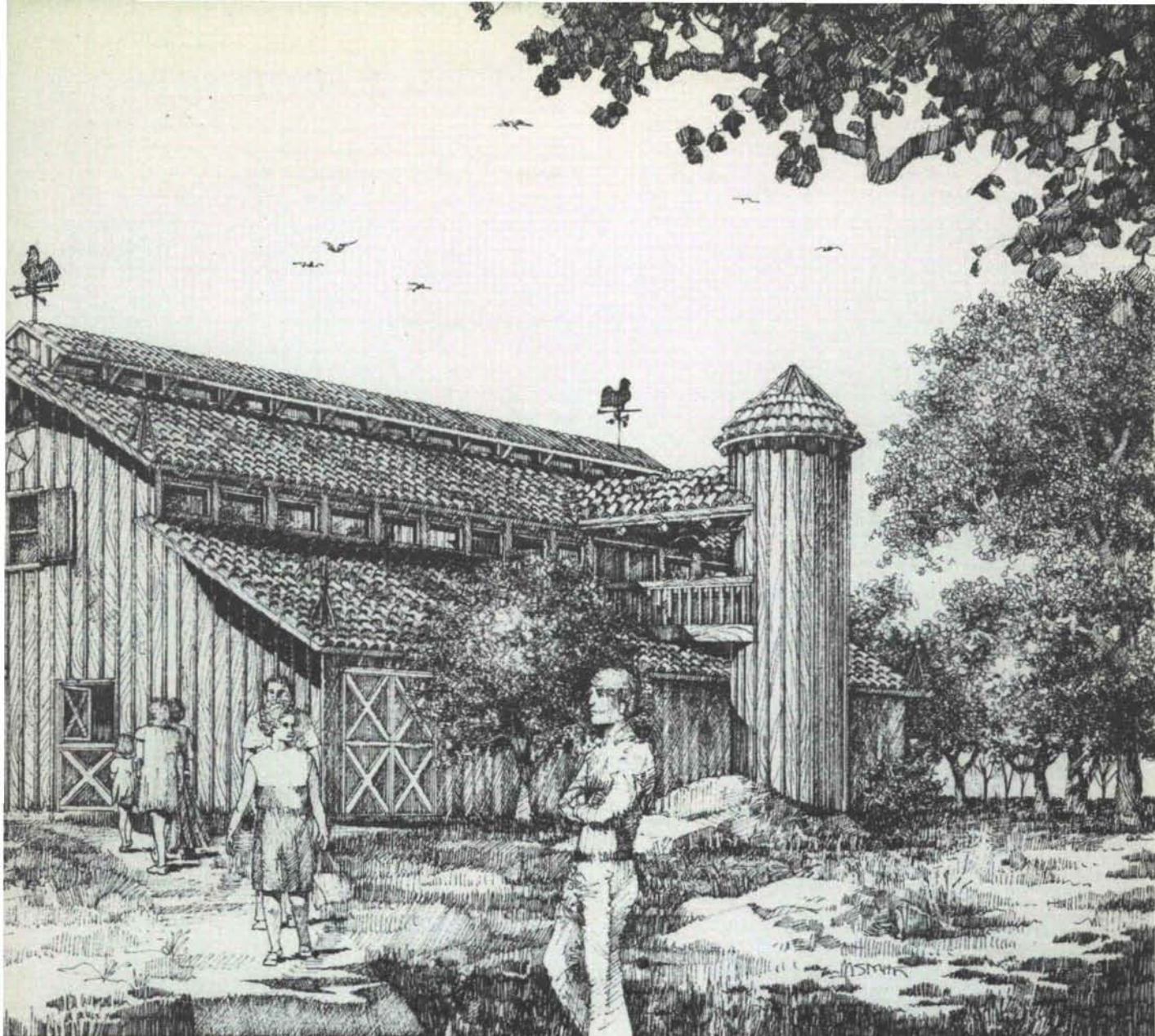
*New Mexico Building and Construction  
Trades Council AFL-CIO*

*Masonry Contractors Association of New Mexico*

The response from individual contractors and material suppliers has been excellent, with donations too numerous to mention here. However, additional donations or cash contributions are needed.







Judging the zoo in terms of recreation, it is a fun place to visit. The environment is detached and different. The zoo, sitting inside the Rio Grande Bosque, provides a welcome contrast to the high desert ecology for the cross country visitor—and the animals communicate! The recreation needs here are for more projects dealing with human well-being, such as more landscaped areas (and personnel to maintain them) less chain link fences and better graphics (these are on the way, thanks to the Tri-Delta Sorority at UNM).

The visitor to the zoo must find a natural and communicative environment when he views the exhibits. Architectural surprise is important here as well, and the zoo provides this element in some features, such as the inside of the great ape house and the tiger moat.

Another function of the zoo is education. The Rio Grande Zoo has been fulfilling an educational mission, but the true judgment of this effort must

be made in terms of its future potential. A zoo is a place of knowledge, both in terms of the preservation of exotic creatures from far away lands and the opportunity to learn from simple animal behaviour and life styles. The zoo architect cannot help but be impressed by working with animal "clients" whose disciplines of sleeping, security, food and breeding are so different than his own *homo sapien* ways.

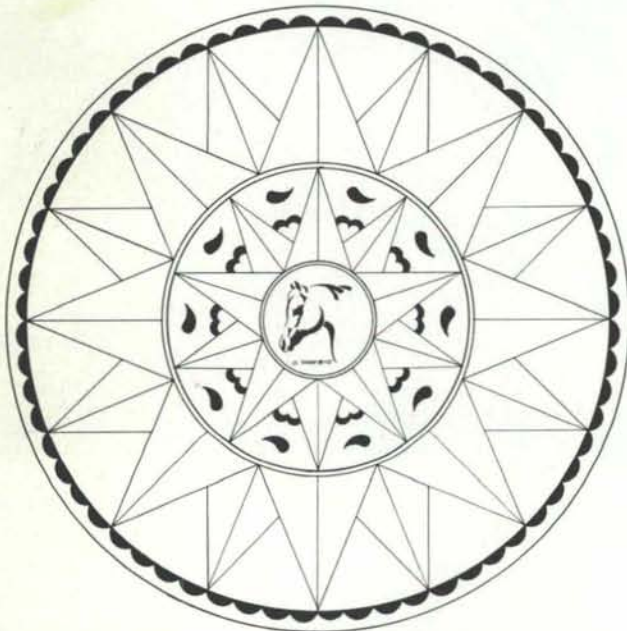
The zoo can also function as a research facility. The construction of a proposed hospital and veterinary clinic at the zoo will greatly enhance this potential. Also possible here is future cooperation between such laboratories as Los Alamos and Lovelace Clinic.

One of the principal judgments of a zoo is its contribution toward conservation. Through an agreement with the New Mexico State Game and Fish Department, the Rio Grande Zoo has pioneered in the reestablishment of endangered species into habitats matching their native environments. The zoo



is also a repository and breeding area for many such exotic creatures as the orangutan and the polar bear. Sometime in the near future animals may only be found in zoos and animal parks. The act of conservation is directly linked to architecture and the need for animal oriented facilities. For example, in the old bear cages at the Rio Grande Zoo the mother grizzly would kill her newborn each year, due to the lack of privacy in the inadequate pens.

A functioning and exciting zoo is the common goal. A zoo that provides for beauty, environment, entertainment, research, education and conservation is possible in Albuquerque. Immediate projects include an aviary, a gibbon flight cage (substituted for a monkey island) and a white rhinoceros enclosure. The future is full of projects and dreams including an outside moat for the gorillas and the orangutans, the completion of the feline exhibits, some water oriented exhibits, the elimination of the chain link through moat enclosures, and the expansion and enrichment of the hoofed animals areas. The zoo will grow with involvement in its programs and its community service to be a good place to be—both from the human and animal points of view. C. G.



## A Hex Sign For The New Barn

Craig Bogord

Hex signs are an American folk art with its origins in the Pennsylvania Dutch country in southeastern Pennsylvania. The early immigrants to this area came mostly from Germany rather than the Netherlands; it is thought that "Dutch" is a corruption of "Deutsch". Fleeing from religious persecution as had the earlier Pilgrims, they sought a land where they could worship as they pleased. Today this area of Pennsylvania is a prosperous, rolling farming area, culturally enriched by the descendants of the members of all the sects who settled there.

"Hex" does not refer to an evil spell. Instead,

these brightly painted signs are used to keep away bad luck, and to encourage good luck and a number of specific positive elements. The stylized flowers, birds, stars, rosettes are not intended to be faithful portrayals of their earthly counterparts. Rather, they are stylized visualizations of symbols; many are Biblical derivations produced by a deeply religious people — including the flowers that grow in Paradise.

At the center of this sign is the Barn Sign, used to protect the barn from lightning and fire, and the livestock from harm or disease. The surrounding star motif is the Lucky Star sign, designed to bring good fortune to the building and its inhabitants. The outer band is the Rain, Sun, and Fertility sign. The rain and sun bring crop abundance, and fertility for life. The outer border of scallops encourages smooth sailing throughout life. The entire hex sign is an original, now being executed for the zoo barn at Silver Hill Arabians, Tijeras, New Mexico.

These colorful signs are most obvious in their use as barn decorations, and many may be seen on the unique forebay barns found in southeastern Pennsylvania. Traditionally they also decorate family bibles, birth and marriage certificates, illuminated manuscripts, linens, iron stove plates, trivets, tinware, pottery, tombstones, and wooden chests. And of course in this day of commercialization, they are seen on every imaginable sort of tourist item. The power of the hex sign has not diminished, however. Professional hex sign painters in the area are flourishing, and their customers report that the signs are still being used with great success. C. B.



The need for further donations or cash contributions still exists. The construction program is now underway and any contribution above \$5.00 will entitle the donor to a membership in the Zoological Society.

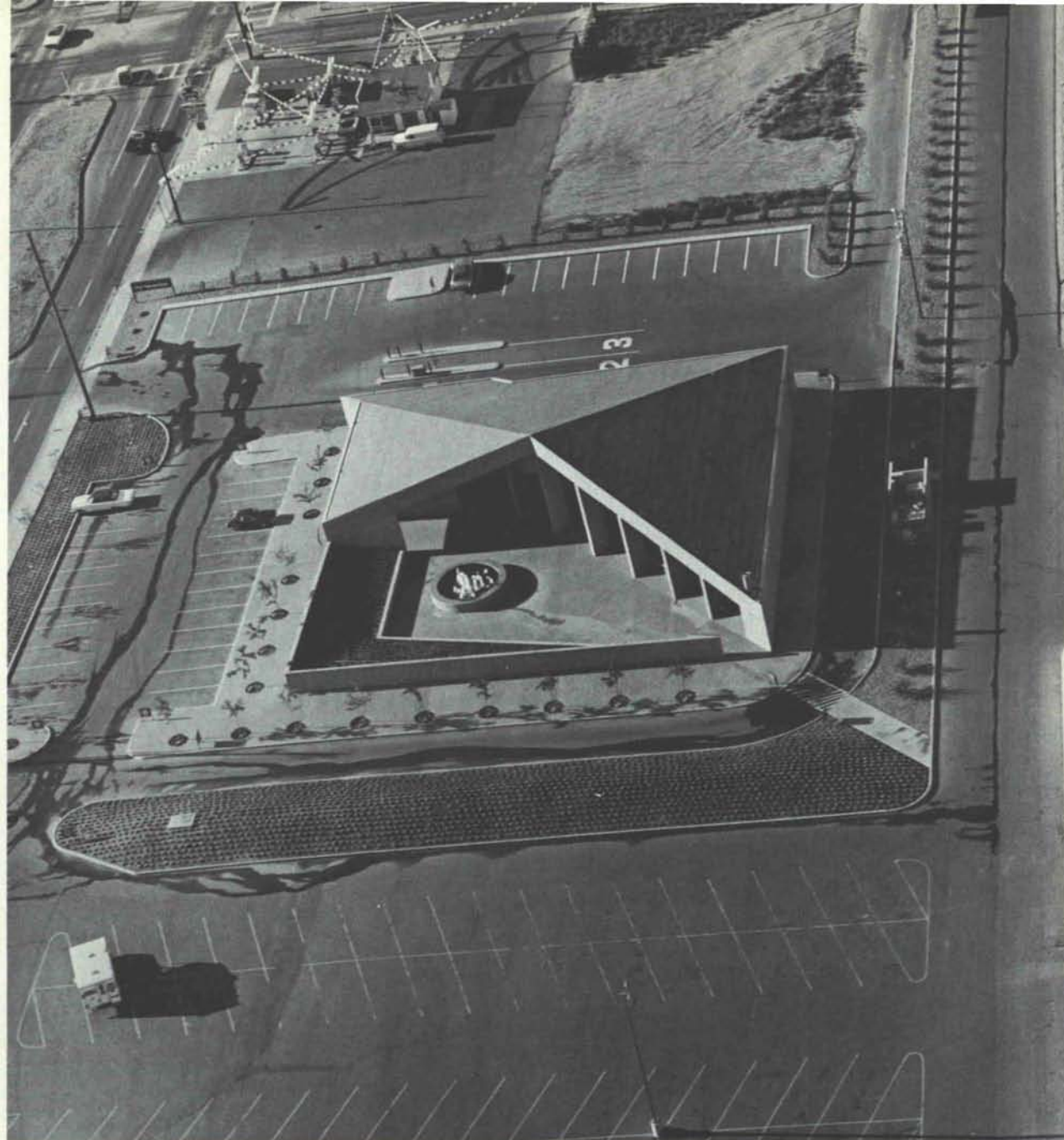
The New Mexico Zoological Society  
c/o Rio Grande Zoo—903 10 Street SW  
Albuquerque, New Mexico 87102

Drawings:

Animal sketches by Kent Blair

Rendering on page 13 by Mike Smith



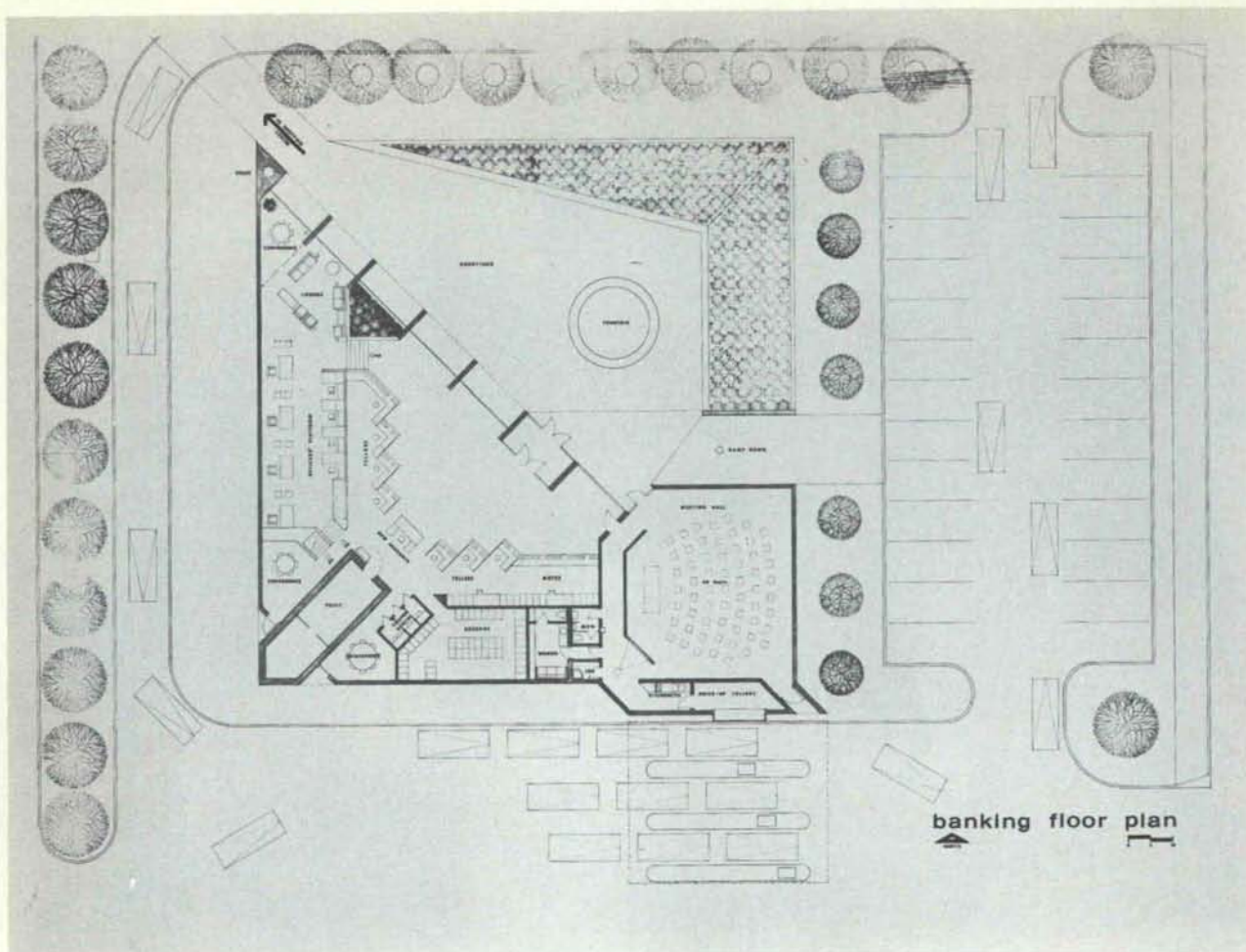


**Sandia Plaza Branch of The First National Bank . . . . .**  
**Albuquerque, N. M.**

**Antoine Predock, AIA, Architect**  
**Stanley G. Moore, Associate**  
**Van H. Gilbert, Associate**

**Robert Krause Structural Engineer**  
**Allison Engineering Mechanical Engineer**  
**Don Fowler Electrical Engineer**  
**Lembke Construction Co. Contractor**





## Site:

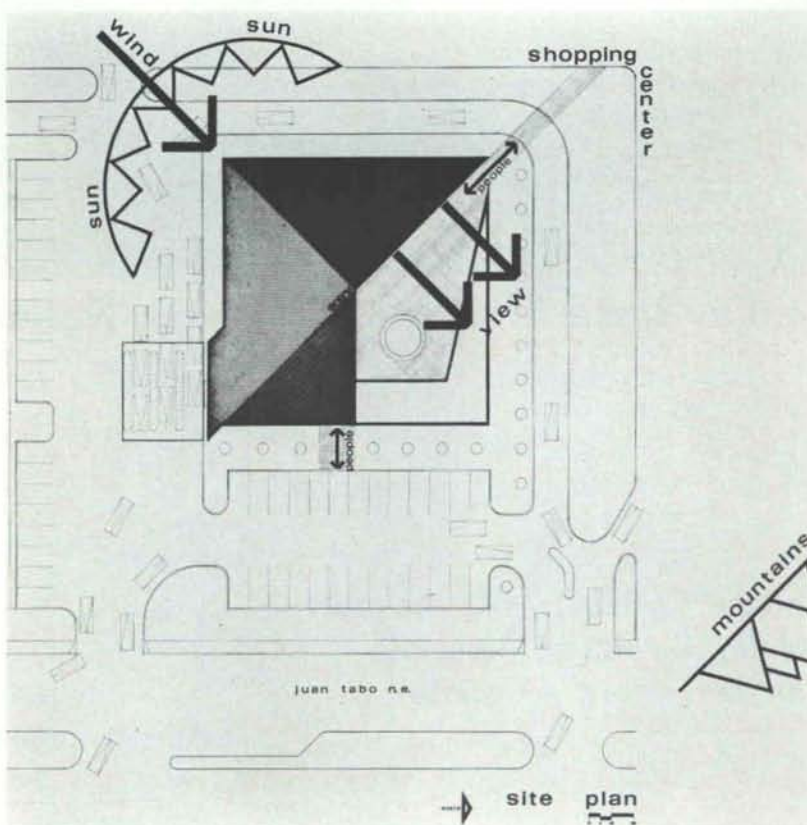
In Albuquerque, New Mexico, a flat suburban site on formative commercial "strip" next to a shopping center. Views toward northeast mountain range.

## Program:

Emphasize the consultative side of banking through the building. Relate to pedestrian customers from the shopping center next door. Respond to regional climatic impacts and views. Make an oasis in the "strip" environment.

## Design Solution:

A walled entry court wraps around the mountain view-oriented glass facade. A diagonal pedestrian shortcut to the shopping center passes through the court. The other sides of the bank are closed and the pyramidal roof acts as a prow into







duststorms from the southwest, protecting the entry court. The south and west elevations are blank in response to solar impacts. The high side of the building shades the courtyard and a fountain adds coolness and masks street noises.

Inside, the consultative functions (financial planning, loans) are raised for separation and views to the mountains. The tellers below are oriented toward the view with the vault as a central symbol. From within, the bermed courtyard wall height

cuts off views of the suburban foreground and acts as a visual base for the mountain view. Outside, the same wall separates the pedestrian court from the vehicular pattern. A multi-use meeting hall adjoins the banking area. Tapestries are used as color events on the essentially blank interior walls.

### Construction:

Sandblasted cast in place concrete walls. Post-tensioned concrete waffle slab roof structure.

Quarry tile courtyard and roof finish. Architectural metal—black anodized aluminum. Bank equipment metal—stainless steel. Oak veneer casework with black laminate tops.



PHOTOGRAPHS BY  
JOSHUA FREIWALD





An Award of Merit was presented the architect of the Sandia Plaza Branch of the First National Bank at the Western Mountain Region, AIA, Conference held recently in Estes Park, Colorado. The jury commented as follows:

*The unusual form of this branch bank building makes a strong statement in the shopping center where it is located. The building is of concrete, of excellent quality to judge by the photographs, and this material is handled with great appropriateness and with a commendable restraint which the strong and dramatic form of the building required for maximum effect. Surfaces are simple and plain, an im-*

*portant consideration in dealing with geometric forms of exceptional configuration. The opening up of the entrance elevation to the enclosed court and, from the upper level, to the view of the mountains, makes the interiors unusually pleasant, and the coffered ceiling which incorporated the illumination of the entire banking room is handsome. The landscape design uses berms to screen the road from the court and to form an environment in which both materials and climate respond to each other, and in which the banking institution and the community can relate pleasantly to each other. For these reasons, the Jury found this building excellent and presents to it the Award of Merit.*



## ALBUQUERQUE TESTING LABORATORY

Sub-soil Investigations  
For Structural and Dam Foundations

**Two Drills and Crews now  
available for Prompt Service**

Laboratory Analysis and  
Evaluation of Construction Materials

**All work done under the supervision  
of Registered Professional Engineers**

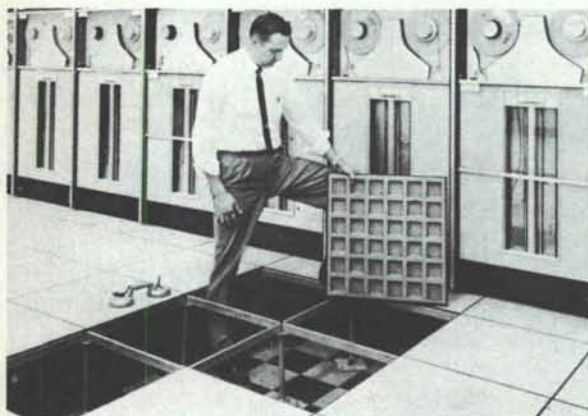
532 Jefferson St. N.E. — P. O. Box 4101  
Phone AL 5-8916 Albuquerque  
Phone AL 5-1322 New Mexico

## ARCHITECTURAL SYSTEMS COMPANY

ACOUSTICAL CEILINGS  
BUILDER'S HARDWARE  
DEMOUNTABLE  
PARTITIONS

Box 3624  
Albuquerque  
345-3491

Earl A. Boule  
Gerald P. Shultz A.H.C.



## THE INFINITE ACCESS FLOOR

The sensible answer to the problem of underfloor, accessibility for cables - heating, cooling, conduit, piping, conveyors, etc. The Tate Floor System, as installed by New Mexico Marble & Tile Co. offers the advantage of: The high strength of steel, interchangeable floor panels, fire resistance, low cost, lateral stability, permanent floor level, cut-out flexibility, dimensional stability, unaffected by temperature or humidity, owners choice of floor covering.



**COOK'S BUILDING SPECIALTIES**

414 SECOND ST., S.W. 243-5541  
ALBUQUERQUE, NEW MEXICO • P.O. BOX 834, 87103

## Congoleum®

FINE FLOORS



## PEERLESS™

**CUSHIONED VINYL FLOORS.** THE ULTIMATE IN CUSTOM FLOORS FOR COMMERCIAL INSTALLATION. THE WHITE SHIELD BACK ALLOWS INSTALLATION ON OR BELOW GRADE.

ASK TO SEE THE WIDE SELECTION OF BEAUTIFUL PATTERNS IN PEERLESS CUSHIONED VINYL SHEET GOODS. EXTRA RUGGED, YET SO BEAUTIFUL.



312 INDUSTRIAL AVENUE, N. E.  
ALBUQUERQUE, N. M. P. O. BOX 25111, 87125  
PHONE 344-2317



Verli-Line  
LAYNE AND BOWLER

LAYNE AND BOWLER  
A SUBSIDIARY OF THE AURORA PUMP  
UNIT OF GENERAL SIGNAL  
200 NO PUENTE AVE. CITY OF INDUSTRY, CALIF. - P.O. BOX 1300 LA PUENTE, CALIF. 91749

ap  
AURORA PUMPS

# PUMPS

## VERTICAL TURBINE TYPE

Deep well—in line booster—fire—submersible—low head propeller

## CENTRIFUGAL TYPE

Condensate—end suction—fire—sump—split case—sewage

## VARIABLE SPEED PUMP SYSTEMS

Constant pressure, flow, level and temperature

REPRESENTED EXCLUSIVELY BY

# JAMES & COOKE, INC.

Albuquerque

(505) 256-3582

THE



for over 50 years - - -  
from 1921

installed & serviced by

## OVERHEAD DOOR COMPANY of ALBUQUERQUE

(505) 344-3467

2840 LOS ARBOLES AVE., N. E. 87107



GLAZED CONCRETE  
BLOCK WALLS . . .

## THE ECONOMIES OF BLOCK COMBINED WITH THE PERFORMANCE OF GLAZE

**Build & finish in 1 operation.** Thru-wall units, load-bearing or partition, eliminate cost of back-up walls.

**Permanent glazed factory finish.** 1 trade, faster job, substantial savings.

**Low maintenance.** Cannot peel or blister. Impervious to moisture (even steam cleaning!) No refurbishing ever!

**Resistance to chemicals.** Acids, alkalis, solvents, disinfectants, etc.

**2-face units** available for lowest cost 2-face walls.

**Excellent insulation & sound-proofing.**

4.5/Bu  
in SWEET'S



Many colors, scored & design faces available. Job-site delivery.

© Reg. U.S. Pat. Off., Canada & other countries by the Burns & Russell Co.

FEATHERLITE BLOCK CO., Box 489, Lubbock, Tex. 79408. 806/763-8202

FEATHERLITE BUILDING PRODUCTS CO., Box 9977, El Paso, Tex. 79990

BUILDERS BLOCK & STONE CO., INC., Roswell, N.M. & Albuquerque, N.M.

EMPIRE BLOCK CO., Santa Fe, New Mexico

# You Can't Burn Natural Gas!

In fact, a burning match would "drown" in a 100% natural gas atmosphere. Natural gas contains no oxygen, so an atmosphere with less than 4% or more than 14% of gas is incapable of burning. To support combustion, you have to mix about 10 parts of air to one of gas. Then—and only then—can you harvest the blue flame which does so many modern jobs so dependably and so efficiently for such a low cost.

Natural gas under control is completely harmless. And since it's lighter than air, it usually can't collect in one spot in a moving atmosphere. Moreover, the air in an average house changes one and one-half times each hour. A professional study in Washington, D.C.—where the ratio of electric meters to gas meters was 1.1 to 1—showed the ratio of electrical fires was 26 to 1. The ratios in your own community are probably quite similar. Natural gas has an enviable safety record, so remember:

If you want the job done right . . . do it with gas.

SOUTHERN UNION **GAS** COMPANY





## ROCKY MOUNTAIN STONE CO.

*Beautiful . Enduring . Inexpensive  
Natural Building Stone . . .  
from the Land of Enchantment*

3219 CLAREMONT AVENUE N. E.  
ALBUQUERQUE, NEW MEXICO

344-2611

## new mexico architecture nma

Published bi-monthly by New Mexico Society of Architects, American Institute of Architects, a non-profit organization.

Editorial Correspondence should be addressed to John P. Conron, Box 935, Santa Fe, N. M. 87501. 505 983-6948.

**Editorial Policy:** Opinions expressed in all signed articles are those of the author and do not necessarily represent the official position of the publishing organization.

No responsibility will be assumed by the editor or publishing organization for unsolicited contributions. Return postage should accompany all unsolicited manuscripts.

**Subscriptions:** Write Circulation, New Mexico Architecture, Box 7415, Albuquerque, N. M. 87104. Single copy 50c. Yearly subscription \$2.50.

**Change of address:** Notifications should be sent to New Mexico Architecture, Box 7415, Albuquerque, N. M. 87104 at least 45 days prior to effective date. Please send both old and new addresses.

**Advertising:** Send requests for rates and information to New Mexico Architecture, Robert G. Mallory, 115 Amherst Drive S.E., Albuquerque, N. M. 87106. 505 255-8668.

Additional copies of NMA available from John P. Conron AIA/FAID, P. O. Box 935, Santa Fe, N. M. 87501.

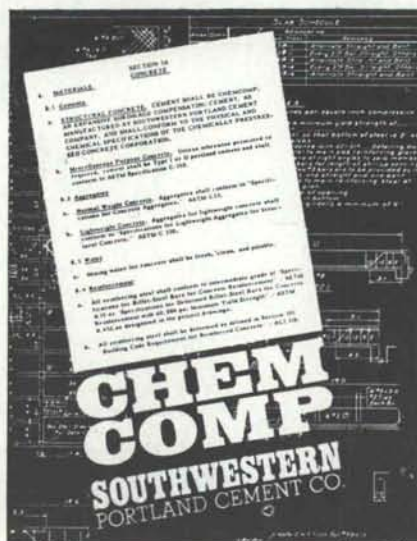
# ChemComp doesn't shrink from any job.

When you want minimized shrinkage cracking for absolute structural integrity, durability, and beauty, the concrete answer is ChemComp, Southwestern Portland's expansive cement. ChemComp is finished cement, not an additive or partial replacement. It greatly reduces maintenance and repair costs due to cracks. It generally eliminates the need for waterproof membranes or surface sealants. Check ChemComp's many advantages.

WRITE FOR FREE BROCHURE:  
BOX 392, EL PASO, TEXAS 79943.



**SOUTHWESTERN PORTLAND CEMENT COMPANY**  
MAKERS OF EL TORO CEMENTS / EL PASO, AMARILLO, ODESSA



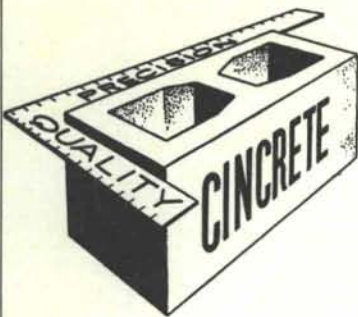
PRINTED BY

HALL-POORBAUGH PRESS, ROSWELL, N. M.

**INDEX OF FIRMS** who make possible the publication of NMA and the page upon which their message may be found:

Albuquerque Gravel Products .....	6
Architectural Systems Company .....	20
Albuquerque Testing Laboratory .....	20
Builders Block & Stone Co., Inc. ....	23
Cook's Building Specialties .....	20
Crego Block Co., Inc. ....	2
Custom Electrical Products, Inc. ....	10
Design Interiors, Inc. ....	7
El Rey Stucco Co. ....	7
Goodrich Roofing Co. ....	6
Hanley Paint Mfg. Co., Inc. ....	4
Hydro Conduit Corporation .....	24
James & Cooke, Inc. ....	21
Keers, Inc. ....	10
Mason Contractors Assn. of N.M. ....	8
McGill Co., Inc., Geo. B. ....	23
Neumark Co., Inc. ....	9
Overhead Door Co. of Albuquerque ..	21
Plasco, Inc., Albuquerque .....	4
Prestressed Concrete Products, Inc. ...	4
Rocky Mountain Stone Co. ....	22
Santa Fe Builders Supply Co. ....	23
Southern Union Gas Company .....	21
Southwest Vermiculite Co. ....	5
Southwestern Portland Cement Co. ....	22
Spectra Glaze .....	21
Stryco Sales, Inc. ....	20
TeleData, Inc. ....	7
Unistrut New Mexico .....	6
University Book Store .....	5
Wellborn Paint Mfg. Co. ....	6





serving New Mexico  
and the El Paso area  
with

## Quality Concrete Masonry Products and many allied building materials



*Modernfold Wood and Plastic Folding Doors*  
*Hollow Metal Doors and Frames*  
*Steel and Formica Toilet Partitions*  
*Commercial Toilet Accessories*  
*Reinforcing and Fabricated Steel*  
*Commercial Hardware*  
*Moderncote Vinyl Wall Covering*  
*Residential and Commercial Steel and Aluminum Windows*

### Builders Block & Stone Co., Inc.

P. O. Box 1633  
Roswell, N. M. 88201  
505 622-1321

### Builders Block & Stone Co., Inc.

P. O. Box 10284  
Albuquerque, N. M. 87114  
505 265-6085

### Builders Block & Supply Co., Inc.

P. O. Drawer FF  
Las Cruces, N. M. 88001  
505 524-3633

### Builders Block & Supply Co., Inc.

Telephone  
El Paso  
915 532-9695

Members: New Mexico Concrete Masonry Association, National Concrete Masonry Association



**"... well pleased with the prompt  
delivery and the economies realized."**

That's the way it went for Bradbury & Stamm Construction as Robert M. McAfee, Vice-President, relates it.

"We used I Series TRUS JOIST for the entire roof area and balcony and were well pleased with the prompt delivery and economies realized.

"These are the things which make contractors and owners happy. In this case you have both."

Happiness is TRUS JOIST.

Savon Wholesale Florists

Contractor: Bradbury & Stamm

Architects: Flatow, Moore, Bryan & Fairburn

### Geo. B. McGill Co., Inc.

3520 Pan American N. E.  
Albuquerque 87107  
Phone 505/345-4501



### McGill - Stephens, Inc.

110 Festival St.  
El Paso, Texas 79912  
Phone 915/584-6541

*Serving the architectural  
profession - - - - professionally!*

**SANTA FE BUILDERS SUPPLY CO.**

SANTA FE

ALBUQUERQUE



Van Dorn Hooker  
Box 18, University Station  
Albuquerque, New Mexico 87106

Bulk Rate  
U. S. Postage  
**PAID**  
Roswell, N. M.  
Permit No. 47

Vol. 15, Nos. 11 & 12

# BEAUTY & DURABILITY

## IN ONE PACKAGE

### WITH EXPOSED AGGREGATE PANELS

The new Mountain Bell Telephone Exchange Building on San Mateo Boulevard in Albuquerque features an exterior of striated exposed aggregate concrete panels.

Seventy-one of the panels were custom fabricated for the structure by Hydro Conduit Corp.

For strength and beauty that lasts, specify precast concrete panels.

ARCHITECT  
Long & Waters,  
Architects

BUILDER  
George Rutherford



**HYDRO CONDUIT CORPORATION**

2800 SECOND STREET, SW - ALBUQUERQUE, NEW MEXICO 87103