

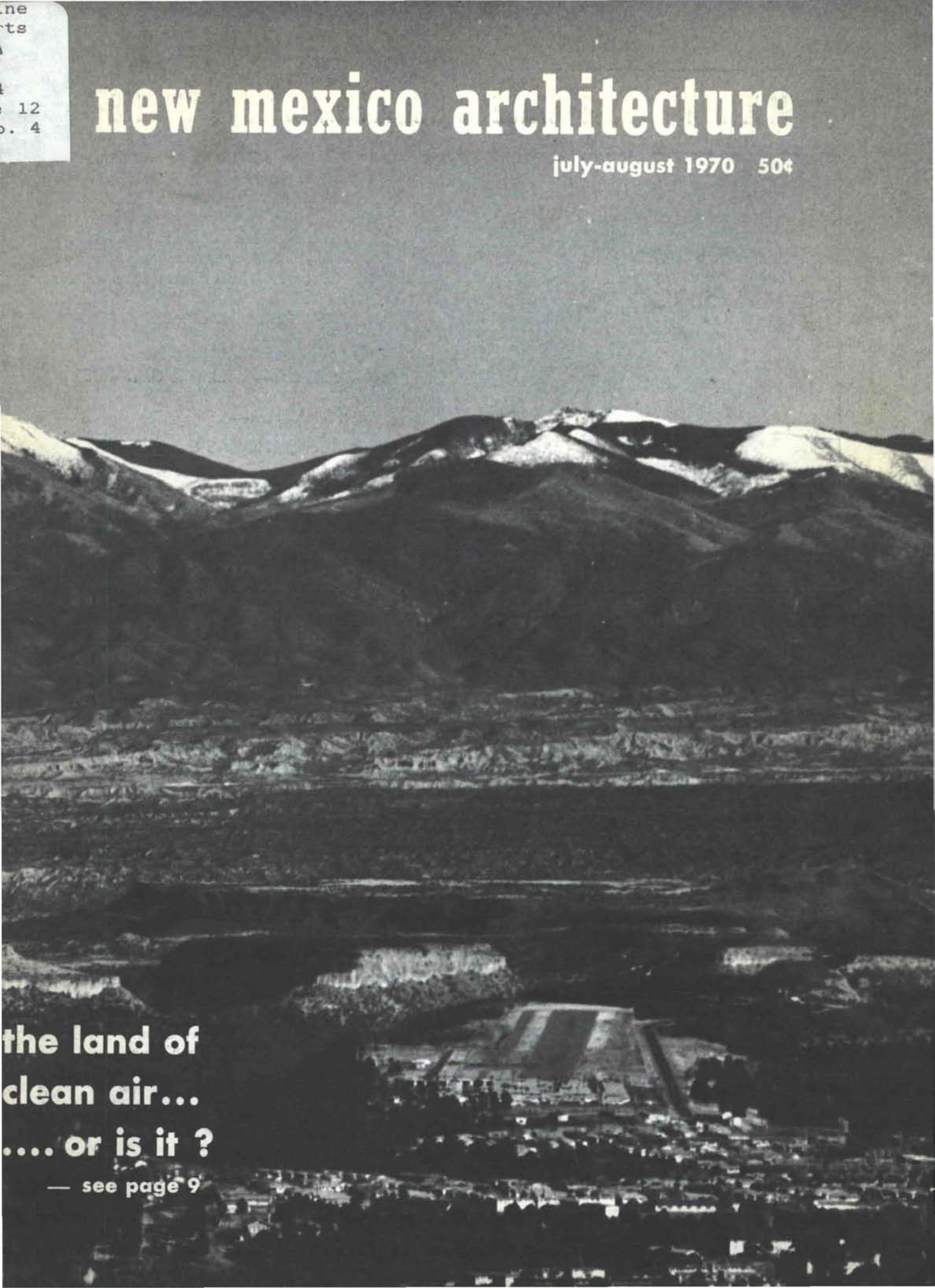
the
ts
A
t
12
s. 4

new mexico architecture

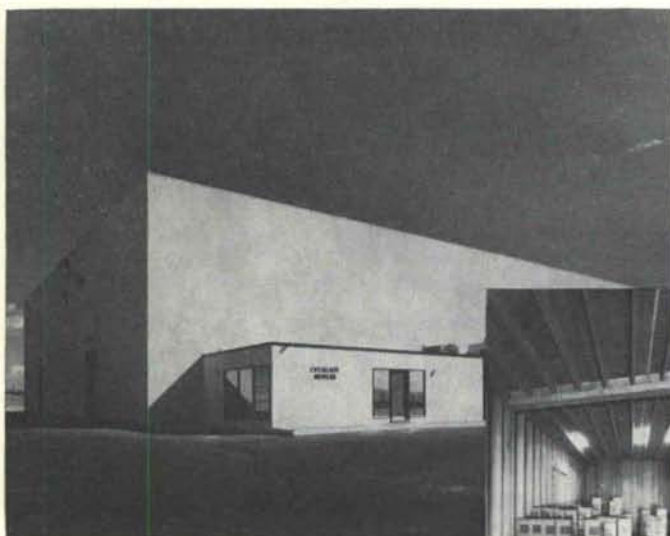
july-august 1970 50¢

the land of
clean air...
.... or is it ?

— see page 9



MULTIPLY USABLE SPACE WITH PRESTRESSED CONCRETE



The new ABC bonded warehouse in Albuquerque is a good example of the clear span capability of prestressed concrete. The 30' high walls and the roof are prestressed concrete 8' double tees supported by precast girders and columns, giving a 60' clear span on the interior. The added advantage of course, is maximum fire resistance.

ARCHITECT—WILLIAM G. BARBER

CONTRACTOR—

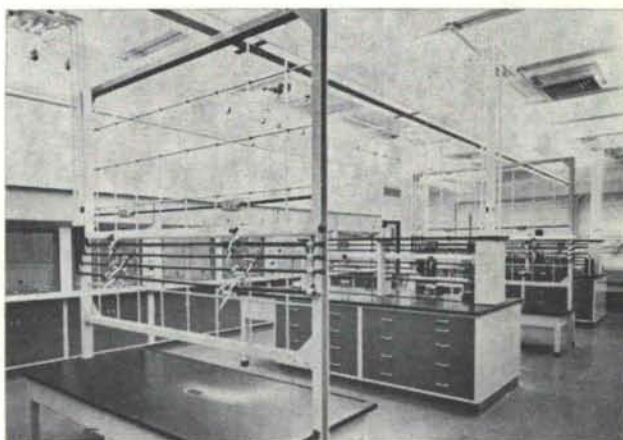
STRIGHT, THOMAS & SANDERS

PRESTRESSED CONCRETE PRODUCTS, INC.

1304 Menaul Blvd. N.E., Albuquerque, N.M. 87106 (505) 345-2536



- Counseling, Sales & Installation of
- Scientific & Institutional furniture for
 - Schools — Hospitals
 - Research — Industry
 - Arts & Crafts and Homemaking



KEM/METAL by Kewaunee Scientific Equipment Corp., for
the modern Chemistry Laboratory
University of New Mexico, Chemistry Laboratory
Albuquerque, New Mexico

ARCHITECT—Ferguson, Stevens, Mallory & Pearl
CONTRACTOR—Bradbury & Stamm Const. Co., Inc.
OWNER—Regents of the University of New Mexico

ONALD G. HITING CO., INC.

Albuquerque, New Mexico 87108
1009 San Mateo Blvd. S.E.
PH: 505 255-1684

Denver, Colorado 80215
11904 W. Cedar Drive—Suite No. 1
PH: 303 986-1573

Phoenix, Arizona 85016
4215 N. 16th Street—Suite No. 2
PH: 602 263-8415

nma

vol. 12 • nos. 7 and 8 • july - aug. 1970 • new mexico architecture

New Mexico's Air and Water:
The Endangered Essentials 9
—by Harvey Mudd II

Why Should Architectural Fees Go Up? 15
—Joe Boehning, AIA

New Mexico Society of Architects
Schedule of Recommended Fees 19

10 Years 10 22
—We've been around that long

Index to Advertisers 22

(Cover—*The Sangre de Cristo Mountains*—a 1960 photograph by Bill Regan)

— Official Publication of the New Mexico Society of Architects, A. I. A. —

Society Officers

President—Joe Boehning
Vice President—Earl P. Wood
Secretary-Treasurer—Charles E. Nolan, Jr.
Director—Beryl Durham
Director—Duane Dorsey
Director—Terence Ross
Director—Wilbur Harris
Director—Van Dorn Hooker
Director—George Pearl
Director—John P. Conron

Commission for NMA

John P. Conron—Editor
Bainbridge Bunting—Editorial Consultant
Robert G. Mallory—Advertising
Mrs. Mildred Brittelle—Financial
Secretary, Circulation
John W. McHugh
Robert B. Riley
James M. Murray, III

SIMPSON

Strong-Tie[®] CONNECTORS



WHEN YOU SPECIFY SIMPSON

... you have selected the nation's largest and most comprehensive supplier of wood connector products. Simpson's leadership is due to superior engineering and design resources, advanced manufacturing capability, and responsiveness to facilitate usage and document the design and values. Simpson's quality production assures your clients and contractors of low, competitive prices, and inventories for fast delivery.



3825 EDITH BLVD., N.E.
PHONE 345-2511

Big deal for small dust problems.



Free bulletin gives all the facts.

You get 99.9+%/ cleaning efficiency with AAF's Arrestall Dust Collector. Ideal for small volume dust control problems. Compact. Economical. Highly efficient.

AAF American Air Filter
AIR POLLUTION CONTROL

JAMES & COOKE, INC.
Albuquerque El Paso

Goodrich Roofing Co. A CORPORATION

Serving New Mexico For Over 20 Years

NO JOB TOO LARGE—OR TOO SMALL

**ALMOST EVERYTHING IN ROOFING
AND SHEET METAL**

**GOODRICH ROOFING IN
ALBUQUERQUE FOR GOOD . . .**

OUR CREDENTIALS . . . THOUSANDS OF
SATISFIED CUSTOMERS

FREE ESTIMATES

(505) 345-1854

3402 Stanford Drive, N. E.
ALBUQUERQUE, NEW MEXICO

Happiness is having a good roof by Goodrich

**MADE FOR THE
SOUTHWEST CLIMATE**

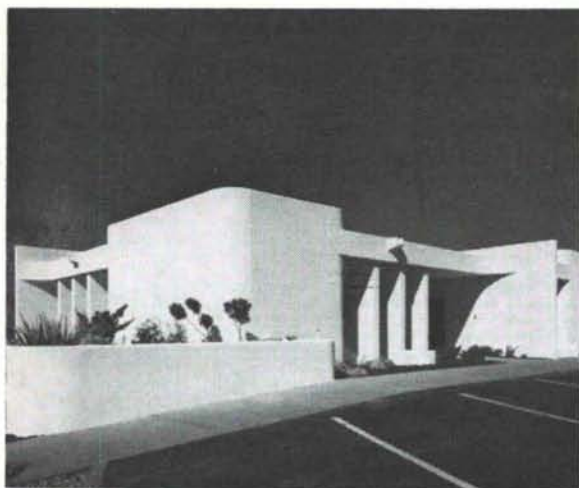
**SERVING THE SOUTHWEST FOR A QUARTER
CENTURY WITH QUALITY PAINTS AND PRO-
TECTIVE COATINGS.**

For Fast Service On
Your Requirements Call
Bill Sutton, Your
Architectural Representative

**WELLBORN
PAINT Mfg. Co.**

2714 4th St., N. W.
Albuquerque, N. M.
87107
Phone 344-3558





Building: Savage & Sganzi, Albuquerque
 Architect: Bill Shelton & Assoc., Albuquerque
 Contractor: Lembke Construction Co., Inc., Albuquerque

"I would particularly like to take this time to thank you for the very rapid delivery . . ."

So says Stanley Borthwick, president, Lembke Construction Co.

This Albuquerque construction company has used TRUS JOISTS on a number of jobs throughout New Mexico. They know the numerous structural and cost saving advantages of T.J. They're all important.

But there's another important consideration.

Prompt delivery.

That's synonymous with TRUS JOIST.



George B. McGill

7100 Constitution Avenue N.E.
 Albuquerque 505/256-2058

"El Rey"



EL REY STUCCO FOG-KOTE SPRAY
 (A Color Stabilizing Spray)

Exterior -- Interior -- Super Bond Applied Coatings — (16 Colors)

Depicting the variety of colors of the great Southwest and Rocky Mountain Region.

An unlimited number of textures and patterns can be developed with stucco. It can be finished rough or smooth, raked, grooved or dashed. No other material used in construction has more flexibility of form and mood to aid the Architect in carrying out his design.

Manufactured in Albuquerque, New Mexico, (is specially formulated for the Southwest and Rocky Mountain Region)

by **"El Rey" Stucco Co.**

110 Rutherford N. E.
 P. O. Box 6122

Albuquerque, New Mexico 87107
 Phone (505) 345-1208



HOT WATER FAST?

if you want the job done right
 ...do it with gas

SOUTHERN UNION **GAS** COMPANY

KEYSON HAS THE INSULATION

Specially designed for metal buildings, **THERMO-KOTE** is U. L. Inc., approved for fireproofing and is also ideal for condensation control and acoustical treatment.

KEYSON APPLIED COATINGS, Inc.

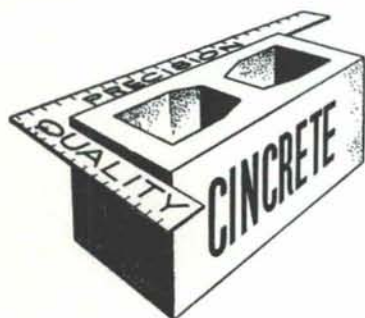
502 General Patch, S. E., Phone 298-7597

ALBUQUERQUE, NEW MEXICO 87112

THERMO-KOTE

Different, because it is —

- ORGANIC
- SPRAYED FIBER
- NON-COMBUSTIBLE
- CHEMICALLY BONDED



serving New Mexico
and the El Paso area
with

Quality Concrete Masonry Products

and many allied building materials

Modernfold Wood and Plastic Folding Doors

Hollow Metal Doors and Frames

Steel and Formica Toilet Partitions

Commercial Toilet Accessories

Residential and Commercial Steel and Aluminum Windows

Reinforcing and Fabricated Steel

Commercial Hardware

Moderncote Vinyl Wall Covering



Builders Block & Stone Co., Inc.

P. O. Box 1633
Roswell, N. M. 88201
505 622-1321

Builders Block & Stone Co., Inc.

P. O. Box 10284
Albuquerque, N. M. 87114
505 344-0851

Builders Block & Supply Co., Inc.

P. O. Drawer FF
Las Cruces, N. M. 88001
505 524-3633

Builders Block & Supply Co., Inc.

Telephone
El Paso
915 532-9695

Members: New Mexico Concrete Masonry Association, National Concrete Masonry Association

Landes, Zachary & Peterson Co.

2137 Mills Ave.
El Paso, Texas
915-533-9060

4800 Pan American Hwy., N. E.
Albuquerque, New Mexico
505-345-2405

DISTRIBUTORS FOR:

UNISTRUT Metal Framing

TELESPAR TUBING

KEENE PENN METAL Movable Partitions

LOGAN Wire Partitions

Also Racks, Shelving & Other Architectural Products

— Please Call For Design Assistance —

Now Available State Wide:

CREATIVE CONCRETE PRODUCTS



*in 6 shapes, 11 sizes
Also available in colors
made in New Mexico by*

**AGP ALBUQUERQUE
GRAVEL PRODUCTS
COMPANY**

**OUR 34TH YEAR CLIMATE DESIGNING
PAINT FOR THE SOUTHWEST**

HANLEY'S *and the*

**COLOR
GUILD
ASSOCIATES**



**NEW WORLD
OF COLOR**

**ARCHITECTURAL PAINTS
FOR BEAUTY AND
PROTECTION**

**TECHNICAL COATINGS FOR
PROTECTION — FUNCTION
AND BEAUTY.**

**SUNFOE
AMBASSADOR
COROBAN**

HANLEY PAINT MFG. CO., INC.

**EL PASO, TEXAS
PH. 532-6921
PH. 755-3353**

**ALBUQUERQUE
NEW MEXICO
PH. 265-1524**



Variations on a theme :

NEW

***Spectra-Glaze*®**

**glazed masonry units
DESIGN SERIES**

**(not an alternate for
any other material)**

**Your choice in color, texture,
form, scale and pattern . . .**

**Select from a variety of
scored units to reduce scale
for as little as a nickel extra
per block . . . Build, decorate
and finish in a single
operation. Thru wall,
load bearing units elimi-
nate expense of back-up
wall . . . Specify**

***Spectra-Glaze* glazed
concrete units in your
base bid to realize
their unique
advantages of
design flexibility
combined with
lower-in-the-wall
costs . . . Local
delivery, world-wide.**

© Cataloged in SWEET'S

(R) Reg. U. S. Pat. Off. Canada & other countries by The Burns & Russell Co.
FEATHERLITE TILE COMPANY P. O. Box 489, Erskine Rd.
LUBBOCK, TEXAS 79408 Phone 809 G PO-3-8202

Roofing and Sheetmetal Contractors



Corporation of Albuquerque

711 WHEELER AVE. S.E.

TEL. 243-3788

ALBUQUERQUE, NEW MEXICO 87103



design interiors, inc.

5021 lomas n. e., albuquerque
268-4307



interior planning
professional design service
contract sales

The Warm, Wonderful World of Wood comes from

BALDRIDGE
HOME SUPPLY CENTER
GIBSON LUMBER CO.
HOME BUILDERS
SUPPLY CO.
BOSQUE FARMS
LUMBER CO.
SANDIA LUMBER CO.



APACHE LUMBER CO., INC.
GEORGIA-PACIFIC CORP.
U.S. PLYWOOD CORP.
DUKE CITY LUMBER CO.
NEW MEXICO TIMBER INC.

THESE ARE THE EXPERTS ON WOOD AND WOOD PRODUCTS TO CONTACT
FOR INFORMATION AND CONSULTATION . . . PROUD MEMBERS OF

LUMBER MERCHANTISERS ASSOCIATION

ALBUQUERQUE, NEW MEXICO

New Mexico's Air and Water

the endangered essentials.

— Harvey Mudd II

A Federal air pollution control official stated recently, "There is no clean air left in the United States." New Mexico is no exception: smog, that noxious price of progress, has arrived in New Mexico, as anyone who has been here long enough to remember how it was before can testify—days so clear that Mt. Taylor could be seen from Albuquerque and San Antonio Mountain was sharp and clear from Tesuque Hill. Those days are rare now. And the day is coming when the Sandia Crest will barely be visible from downtown Albuquerque—the day will come unless New Mexicans take an unequivocal stand about what they value in the Land of Enchantment.

New Mexico's surface water is among the cleanest in the continental United States. It is still possible to find streams that carry no man-made contamination in the Pecos or the Gila Forests. Even the upper Rio Grande is relatively clean. There is no guarantee, however, that such situation will not change under the pressures of increased population and industrial development. It must not be allowed to change.

Air

A quick look at the air and water situation as it stands now: air in New Mexico is contaminated by 1,597,336 tons of pollution annually. Of this figure, transportation, the ubiquitous automobile, accounts for fully 50%; industrial processes account for 31%; this includes oil and gas production in the southeast counties, copper smelting in the Deming-Silver City area, and sawmills in most mountainous areas, most conspicuously in the Espanola and Alamogordo areas. Power generation accounts for approximately 10% of the statewide total, some 164,741 tons per year at the present rates of activity. There is one significant source of power generation pollution in the state—the Arizona Public Service Company/New Mexico Public Service Company facility near Farmington. These coal burning plants generate some 290 tons of fly ash per day—although only 10% of the state's air pollution total comes from the Farmington facility, fully 64% of all the particulates (airborne solid wastes) of the state are generated by this one activity. The fly ash is spread by prevailing westerlies into the upper Rio Grande Valley where it becomes the major factor in reducing visual range and the general quality of the views. The blue haze that is so prevalent from Albuquerque to Taos is attributable to the fly ash. It has been tracked by air into these areas; a satellite photograph shows the plume stretched from Farmington all the way to San Luis, Colorado. Monitoring devices set up at Los Alamos by the Arizona Public Service Company detected



Arizona Public Service Co./New Mexico Public Service Co. plant near Farmington, N. M.

Photograph by Jon Samuelson

the fly ash. However, industry spokesmen have made no statement concerning the quantities which were found. In addition to the fly ash, sulphur dioxides and oxides of nitrogen are pollutants from the Four Corners power plant. The remaining 9% of the state's air pollution is contributed by miscellaneous burning processes; public dump burning is a major contributor.

Water

The Health & Social Services Department indicates that some 200 miles of New Mexico streams are degraded due to inadequate or improperly operated municipal sewage plants. It is estimated that some 280 industrial and business operations contribute to the contamination of streams. The most notable example of a water polluter is the Molybdenum Corporation of America's mine and processing plant at Questa. Consisting of a slurry of fine sand and small quantities of cyanide, the mill waste is transported by pipe from the mill site in the Red River Canyon to settling ponds west of Questa. The silt settles out and the decanted waters, including dissolved chemicals, are allowed to enter the Red River. However, because of the abrasive qualities of the slurry, the transport pipes break, frequently spilling large quantities of waste into the Red River and eventually the Rio Grande.

Bureau of Land Management officials believe that these breaks may affect fish populations in the Red River. Moly Corp officials state that the decanted water is pure enough to drink: the fact remains, however, that the decant pond, named Turquoise Lake in an attempt to turn it into a recreation area, will not support trout. The Moly Corp has requested permission to dump decant wa-

ter into the wild river section of the Rio Grande; the Bureau of Land Management, which administers the Wild Rivers Act, has at both the state and Washington levels turned down the request. It is technically feasible for the Moly Corp to reuse the decanted water at a capital cost of only one to two per cent of the present capital investment.

Agricultural runoff containing chemical fertilizers and pesticides is becoming another major source of surface water pollution.

New Mexico's ground water supplies are not in good condition. Of 330 public water supplies in the state, 124 failed to meet United States Public Health Service standards for chemical content; nearly a half of the total of 330 failed to meet biological standards. Increased use of ground waters will inevitably result in the lowering of water tables, and the spoilage, through the intrusion of brackish waters, of many small private wells.

Of greater significance in discussing New Mexico's water is the matter of total supply. The state has 2.5 million acre feet available annually. Environmental Services Division of New Mexico Health and Social Services estimates that at present rates of agricultural use, this quantity will support a population of 1.5 million people, only 500,000 more than the present population. Long-range state planning should be begun with reference to that figure.

The satellite cities which are planned for the Santa Fe area have given little or no attention to the question of over-all state water supply. The water resources of New Mexico are finite, a fact which may work to the state's advantage in setting the limits of its population.

Another pollution problem which will require farsighted planning is that of solid wastes. The 3 million daily pounds of refuse generated now require some 200 acres per year in sanitary land-fill operations. That figure, it is estimated, will increase to 500 acres per year by the year 2000. As long as this disposal method is used, land-fill operations must be steered into appropriate areas, areas that have no better social potential.

Ultimately, however, the method must be abandoned in favor of a system which requires reuse of the raw material contained in our solid waste. The American one-use-only approach to materials is profoundly wasteful and, at the same time, environmentally destructive. The world's supply of unreplaceable raw material, iron, virgin forest, hydrocarbon fuels, etc.—is diminishing rapidly as our demand for material goods expands. And, at the other end of a product's life, the vast quantity of American junk imposes severe economic and psychological stresses on our society. The only way out of this double bind is to recycle.

The Air Standards

The quality of New Mexico's environment is and will be controlled by the degree of public concern. The standards promulgated by the state's De-

partment of Health & Social Services, and the laws enacted by the legislature reflect that degree of concern.

New Mexico's air quality standards and regulations, which went into effect 26 February, 1970, are relatively good as a result of a rather substantial amount of citizen's concern and expertise that was demonstrated at the public hearings last September and October. On the positive side, New Mexico emissions' regulations are strict, but not economically prohibitive, when dealing with the emissions from asphalt plants (except portable plants), gypsum plants, cement plants and coal-burning power plants. The fly ash emissions from the Four Corners power plants will, therefore, have to be controlled 99% by 1 January, 1972, in the case of Units 1, 2, 3 and 6, and by January, 1974, in the case of Units 4 and 5, which are now operating at 97%. This will reduce the present fly ash pollution to about one-fifth of the present problem. This is one of the best fly ash emission (particulates) standards in the nation. There is no sulphur-dioxide (SO_2) emission regulation in the state. The regulation for hydrogen-sulphide emissions from paper pulp mills is the most stringent in the nation; even with this standard, however, odors would be detectable two miles from a plant. There are no emission regulations for perlite plants or for copper smelters, a major source of sulphur-dioxide emissions.

The regulation concerning sawmill wood waste burners is adequate. It will require some improvement of incinerator performance on all presently operating units. Any unit operating after January 1, 1975, will be required to operate at much higher standards (measured in terms of smoke density). The eventual goal is to phase out this wasteful method of disposing of the sawmill by-products. Open burning of trash is now prohibited in New Mexico except in the case of communities under 5,000 in population with no public refuse collection service. Certain forestry and agricultural uses of fire, along with the fireplace and the barbecue, are also excepted.

New Mexico also defined ambient air-quality standards (a measure of the overall quality of our air) in the case of particulates and SO_2 . Ambient air standards simply set limits, for particular pollutants, beyond which the air will be considered polluted. These limits can be used to justify tightening of emission regulations. Only emission regulations can be used to control pollutants issuing from a specific source. New Mexico ambient air standards for particulates are scandalous considering the existing relatively high quality of our air. It allows an annual geometric mean of 60 micrograms per cubic meter which, if achieved, reduces visibility to a mere 15 miles. New Mexico's natural background particulate levels probably run around 27 micrograms per cubic meter; the existing standard allows, then, significant deterioration of existing air quality. The sulphur-dioxide standard is equally bad.

At .03 parts per million, New Mexico has actually accepted a standard less stringent than those proposed by the cities of St. Louis and Kansas City. At .03 parts per million, adverse effects to plant life and human health have been noted.

The air quality standards and regulations can be strengthened at subsequent hearings before the Health Board. The ambient air quality standards for particulates must be strengthened if we are to protect our views, a basic right of our citizens and an important resource for the tourist industry. A figure of around 35 micrograms per cubic meter would be more appropriate for New Mexico. The sulphur-dioxide ambient air standard must be lowered to .015 parts per million to provide minimal health protection.

Sulphur-dioxide, incidentally, combined with air-borne water vapor becomes sulphuric acid (H^2SO^4) and thereby a major maintenance problem for many building materials: H^2SO^4 is corrosive to most materials, including human lungs. The ambient sulphur-dioxide level in the San Juan Basin is already exceeding the state standard because of the power plants. New Mexico Citizens for Clean Air and Water, a citizen's group which participated most actively in the standards' hearing, also recommends that visibility standards be set that will define the air as polluted when the absolute visual range is reduced to a certain point — perhaps 100 miles. Emission regulations must be included for sulphur-dioxide and oxides of nitrogen; and the regulations must be expanded to cover industries not now included, such as the copper smelters in the south.

WORK FOR THE FUTURE.

The Air Law

The 1970 legislature made some promising amendments to the Air Quality Control Act. The New Mexico law now has some teeth in it, which its "lobbied to death" predecessor lacked. Some improvements are found in the definitions: visibility is now specifically included as a component of the public welfare which must be protected. The word "will" was replaced by "may" in the section which described polluted air as air which "...will, with reasonable probability, damage health, etc..." This is a significant improvement from the legal point of view, in that less ironclad evidence is needed by

the Health Department or the citizen in establishing a reason to act against a polluter. The language of the new law, "may...damage health" allows action before there has occurred damage to the citizens of the state. The old language, "will damage" essentially allowed industry to avoid being called a polluter until there was already irreversible deterioration in the air and in the health of the citizen: The old "don't move until there is a crisis" syndrome.

Another positive point was the consolidation of the provision for mandatory public hearings, with rights of citizen participation, for all regulation changes and requests by industry for permission to operate below air quality regulations under a variance. Attempts to include noxious odors in the definitions were defeated by cattle interests who feared for the sanctity of their feed lots.

The 1970 bill made some improvements in the enforcement and penalty section of the act. The tools

now available to the Health and Social Services Department and to the citizens include the use of a court injunction against a polluter, a provision for civil penalties of up to \$1,000 per day of violation, a petty misdemeanor provision for such lesser environmental infractions as illegal open burning and removal of an automobile smog control device. The previous act only provided for injunctive relief. The weakness here is in the low "up to \$1,000 per day" fine. It is inadequate for large polluters such as the utilities. An early version of the bill contained a fine of up to \$5,000 per day, a level

found in many states, until a final vote of the bill, when a floor amendment introduced by Alfonso Montoya caused it to be reduced to \$1,000 per day. Future sessions of the legislature must elevate the upper limits of the fine structure so as to be a meaningful penalty for the large offender.

Another job for the next legislative session is to establish the permit system in the state. A permit system allows some control over a new industry before it becomes a pollution problem. Under this system, the industry has to satisfy the Health and Social Services Department that its methods of pollution control are adequate to prevent harmful emissions before it can proceed with construction of the plant. In the long run, this will save the industry money—by avoiding legal battles with Health and Social Services if their methods prove unsatis-

The environmental issues that confront New Mexico, the United States, and ultimately, the human race, are, in the final analysis, far broader than questions of specific contaminants and the regulations for their control. The ultimate concerns must be centered around an understanding of man's relationship with the planet Earth and his right to a clean, healthy, and ecologically balanced environment. It is now necessary to ask fundamental questions concerning the rights of man on this Earth and about our attitudes toward population growth and industrial expansion. *New Mexico Architecture* suggests that its readers put some of these questions to the two candidates for Governor. A post card is provided for these questions. It is hoped that Mr. Bruce King and Mr. Pete Domenici will make a public answer to these questions.

Please send these post cards today!



factory, and by avoiding costly remodeling to meet air quality requirements. The permit system also gives HSS greater control over all sources in the state. The permit system was lost in the last session because the Health and Social Services Department did not feel itself financially or otherwise equipped to administer the program. Adequate funding is a continuing problem—it is a fight which will occur at each session. In the last session, a record \$250,000 for pollution control was appropriated; however the over-all HSS budget was cut drastically, which reduces the effectiveness of the appropriation.

Water Standards and Law

New Mexico's water quality standards are adequate, but could use strengthening. They lack any standard for turbidity (water clarity), one of the pollution effects of the Moly Corp's spills. Increased turbidity in the Red River may have a detrimental effect on fish feeding ability, on the overall life quality of the stream, and, of course, on the tourist industry of the area which must count on good fishing as an asset. The "emission regulations" in dealing with water are measured in chemical oxygen demand (COD) and biological oxygen demand (BOD). The COD standard of 50 parts per million is now being violated by the municipal sewage plants in the City of Albuquerque.

Public hearings are now mandatory in any proceeding in which the city would request permission to continue operation under a variance.

In the last session of the legislature much of what was done to improve the Water Quality Control Act was identical to what was done for the air law; the establishment, for example, of a fine of up to \$1,000 per day in civil penalties. In the case of water, this fine is even more obviously inadequate than in the case of air. Difficult to dispose of pollutants can be held in holding tanks by an irresponsible industry, and then the accumulation of many days or weeks is "accidentally" discharged into the stream in one shot, at the low cost of only \$1,000. The permit system must be incorporated in the water law as well as into the air law. One forward step made in the last legislative session was

the addition of a "private citizen" to the seven-member Water Quality Control Board (Variance Board). Citizen participation in environmental decisions is essential since most government agencies are either too politically confined or too tied to private industry to provide the kind of active disinterested input into the decision-making process. Governor Cargo has appointed a University of New Mexico biologist who is also retained as a consultant by New Mexico Public Service Company. This is hardly what the conservationist had in mind when he asked that a private citizen be included on the board.

THERE IS ABSOLUTELY NO REASON FOR NEW MEXICO'S AIR AND WATER TO DETERIORATE FURTHER.

We start out relatively clean, and, with vigilance and foresight, we can stay that way. The existing problems, such as the power plants and the sawmills, are neither so serious nor entrenched that they cannot be at least partially corrected. The job of protecting our exceptional environment falls as much to the private citizen as it does to state and Federal agencies; for, in essence, government only can do what the citizen demands that it do. Those who are involved in the development of the state, architects, developers, builders, have a special responsibility, for their effect on the future quality of our environment will be more marked than the average citizen. We must be aware that today's haste, carelessness, excessive concern for profits and cost, or simple ignorance, become, invariably, tomorrow's environmental problem. Economic development at the cost of beauty and health of New Mexico's natural environment, is not good economy—the cost to the public health, to the psychological well-being of the human part of the economy, and the damage to our life support system, are factors which our planners and developers must consider. Foresight, care and environmental awareness must be a part of the development of the Land of Enchantment.

—Harvey Mudd II

Primary Source of Data:

Environmental Services Division, New Mexico Department of Health and Social Services Department.



The Sangre de Cristo

Mountains

. . . . they were always
clearly visible . . . once!

This view was taken in 1968. The cover photograph was taken just 8 years previously—from the same spot, at the same time of the day and year. Photographer: Bill Regan.

Area of Cover
Photograph

What you can do!

Household Cleaners Rated on Phosphate

The following list of household cleaners rated for their phosphate content was prepared by the Pollution Probe group of the University of Toronto, Canada, and published by ECO Bulletin, Emmaus, Pa., 18049, which will provide additional copies on request.

Pollution Probe urged consumers to use soap or low-phosphate cleaners. High phosphate products have a higher pollution potential.

The cleaning agents were analyzed in a University of Toronto laboratory. Estimated error is plus or minus 10 per cent of the figure shown, e.g., if the figure is 40 per cent the actual value could lie anywhere between 36 and 44 per cent. All liquid dish detergents tested had less than 1 per cent phosphate.

HEAVY DUTY LAUNDRY DETERGENTS

Product	Per Cent Phosphate	Manufacturer
Amway Trizyme	52.5	Amway Corp.
Bio-Ad	49.0	Colgate Palmolive
Peri	47.0	Sep-Ko Chemicals
Cheer	44.5	Proctor & Gamble
Oxydol	44.5	Proctor & Gamble
Tide XK	43.5	Proctor & Gamble
Drive	41.5	Lever Bros.
All	39.0	Lever Bros.
ABC	37.5	Colgate Palmolive
Sunlight	37.00	Lever Bros.
Amway SAB	36.5	Amway Corp.
Fab	36.5	Colgate Palmolive
Arctic Power	36.5	Colgate Palmolive
Ajax 2	36.0	Colgate Palmolive
Omo	36.0	Lever Bros.
Duz	35.0	Proctor & Gamble
Bold	31.5	Proctor & Gamble
Surf	32.5	Lever Bros.
Breeze	32.0	Lever Bros.
Amaze	27.0	Lever Bros.
Bestline B-7	27.0	Bestline Products, Inc.
Explore	26.0	Witco Chemical Co.
Meleo Laundry Detergent	25.0	Malco Products, Inc.
Wisk	10.5	Lever Bros.
Tend Maskintvatt (Swedish)	8.0	AB Hetios

Laundry Soaps

Instant Fels	9.0	Purex Corp.
Lux	less than 1.0	Lever Bros.
Maple Leaf Soap Flakes	less than 1.0	Canada Packers
Ivory Snow	less than 1.0	Proctor & Gamble

Dishwasher Compounds

All	45.0	Lever Bros.
Finish	43.0	Economics Labs.
Calgonite	42.0	Calgon
Cascade	36.5	Proctor & Gamble
Amway Automatic Dishwasher Compound	34.0	Amway Corp.
Swish	29.0	Curley Corp.

Light Duty Compounds (Laundry and other uses)

Drift	34.0	Proctor & Gamble
Zero	7.5	Boyle Midway
Explore Liquid	less than 1.0	Witco Chemical Co.
Bestline Liquid Concentrate	less than 1.0	Bestline Prod., Inc.
Nutri-Clean OLC	less than 1.0	Con-Stan Industries

Miscellaneous

Calgon (water conditioner)	75.5	Calgon
Amway Water Softener	73.5	Amway Corp.
Solvease	23.0	Russel Chem. Co.
Snowy Bleach	22.5	Harold Schafer Ltd.
Spic and Span	21.0	Proctor & Gamble
Mr. Clean	6.5	Proctor & Gamble
Ajax All-Purpose	6.5	Colgate Palmolive
Arm & Hammer Sal Soda	1.0	Church & Dwight
Fleecy	less than 1.0	Bristol Myers
Javex Bleach	less than 1.0	Bristol Myers
Whistle	less than 1.0	Bristol Myers
Jet Spray	less than 1.0	Economics Labs.
Lestoil	less than 1.0	Noxema
Downy	less than 1.0	Proctor & Gamble
Dutch Bleach	less than 1.0	Purex Corp.
Lawsons Borax	less than 1.0	Bristol Myers
Pinesol	less than 1.0	Cynamid

Reprint from the Denver Post April 5, 1970

While not among the products tested by Pollution Probe group of the University of Toronto, the Shaklee Products Co., Hayward, California, has provided us with an analysis of the phosphate content of its laundry detergent Basic-L. A study prepared by "an independent government licensed research laboratory" determined the phosphate content to be "less than 0.1 parts per million."

Coming Soon in NMA

Billboards and junkyards. A look at where-we-are on implementing the New Mexico Highway Beautification Act of 1966.

NEW MEXICO
IS SWITCHING
TO THE MATCHLESS



medical center, Santa Fe
Robert Plettenberg, Architect



library, Albuquerque
John Reed, Architect

ECONOMIES
OF
ELECTRIC
HEAT

For further information on an all electric design for your next building, contact:

Engineering Sales Department,
Public Service Company, Albuquerque



dormitory, Las Vegas
Philippe Register, Architect

PUBLIC SERVICE COMPANY OF NEW MEXICO

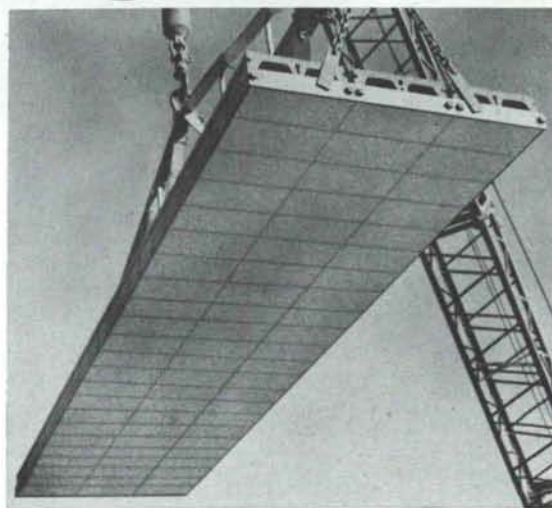
ALWAYS SPECIFY

STRENGTHCRETE SLABS

PERFECT FOR ...

- APARTMENT
 - SCHOOL
 - MOTEL
- CONSTRUCTION

Fire-safe, Low-Maintenance Roofs
and Floors by ...



BUILDING PRODUCTS CO.
P. O. BOX 9977 • EL PASO, TEXAS • PHONE 772-1451

WHY SHOULD ARCHITECTURAL FEES GO UP?

"It is easy for us as contractors to tell when an architect is receiving a substandard fee" according to Bob Lockwood in a recent conversation. Bob, who is President of the New Mexico Building Branch of the Associated General Contractors went on to say, "Substandard architectural fees result in low quality plans and specifications."

Low quality plans and specifications cause problems for owners and architects, as well as for contractors, but the contractor is likely to submit a higher bid to take care of these problems. The owner who is truly concerned about the final building he receives will not try to cut his architect's fee by 1 or 2% of the total construction cost because he realizes that poor architectural services may increase his construction costs by more than 1 or 2%.

In February, 1968, the New Mexico Society of Architects published a new sliding fee schedule that reflected a general increase over the previously accepted 6% fee. The New Mexico Society of Architects spent a great amount of time in research and preparation in 1968 to derive the new fee schedule. Fee schedules from all over the country were studied, as were architectural costs in New Mexico. The final recommended fees, as published at the end of this article, (page 19) are still somewhat below the average fees across the nation.

Many architects and many clients are using the 1968 fee schedule, and they are finding the results to be most successful. A partial list of building owners using the 1968 Fee Schedule is available from this writer on request.

The architect has a very serious responsibility "to safeguard life, health, and property, and to promote public welfare" in New Mexico. The phrase in quotation marks is taken from the first sentence in the New Mexico Architectural Law. When a building owner selects his architect, he is selecting a person who will be responsible for properly spending the large sum of money the owner will invest in his new building. He is also selecting a person who is responsible for designing a building to safeguard the life, health, and property of everyone who uses that building.

Unlike many groups, the architectural profession does not have the benefit of union organization or state law to determine compensation. School teachers have the right of withholding services to bargain for higher compensation. Building trade members have the right to strike for higher compensation. In the case of building trades, the amount of compensation they receive becomes law on public-funded projects and this law is incorporated into the architects' specifications on each building project. When their compensation is increased, the contractor passes the increase on to the building owner in the form of higher bids.

Federal anti-trust laws do not permit the AIA

Joe Boehning, AIA - President, New Mexico Society of Architects

to regulate compensation as the unions can do. This is proper as architects are professionals and should not be in a position to force clients to pay a minimum fee. They should, however, receive compensation commensurate with the services they are called upon to provide.

It is natural to assume that since building costs have increased, the increased compensation based upon a percentage type fee should take care of the increased costs incurred by the architect. The increase in building costs is the direct result of inflation, and the resultant increase in architects' fees only compensates the architect for his normal inflationary increases in expenses. They do not reflect an increase of services to the building owner; they merely indicate the degree of general inflation.

The degree of inflation can be illustrated with Table 1 showing a sampling of wages as determined by the State Labor Commissioner between November, 1965 and April, 1970.

TABLE 1

TRADE	NOV. 1965	APRIL, 1970
Bricklayer	\$4.62 per hour	\$6.31 per hour
Carpenter	4.15 per hour	5.21 per hour
Electrician	4.68 per hour	5.60 per hour
Plumber	4.48 per hour	*5.51 per hour
Iron Worker	4.43 per hour	5.58 per hour

*A 46 day strike was settled in mid-June which grants plumbers an immediate \$1.50 an hour raise. An additional \$1.00 an hour will become effective April 1, 1971.

If the architect today were not providing increased services over what he provided for his client twenty years ago, then the percentage of fee of twenty years ago would still be adequate at today's costs. This, however, is not the case for today's architect is called upon to produce much more complex and detailed plans.

The increase in services provided by the architect has been slow and gradual over the past twenty years, so slow, in fact, that it has almost gone un-noticed. Recently, however, the American Institute of Architects commissioned the management consultant firm of Case and Company to conduct a survey involving over 200 architectural firms (some in Albuquerque) to procure information concerning present day architectural practices. This study showed that profits of architectural offices are only one-third of what they were in 1950. Furthermore, the study shows that on one out of four projects, the architect loses money. How can an architect be expected to provide his best services under these conditions?

To illustrate how the services of the architect

have increased, a school designed in 1947 for the Bernalillo County School Board (now consolidated with Albuquerque Public Schools) will be used as an example. ¹The Ernie Pyle Junior High School, as originally built, had eleven classrooms and cost \$126,351.06. It is compared with a recent school of comparable size and cost—the ¹1969 Addition to Grants High School. The services and costs of these two structures are compared in Table 2. Architect's fees cannot be compared only by relating numbers of sheets of drawings and specifications, as in Table 2, but increased consultant fees must also be taken into account.

A set of documents, such as those for Ernie Pyle Junior High could not be put out for bids today. Today's competitive bidding among contractors requires much more detail and information on drawings and specifications. The lack of detail on the early drawings would make it impractical to

construct the building with present building techniques. If the Ernie Pyle documents were put out to bidders today, and if anyone would bid on them, they would result in higher costs because the lack of information would force bidders to make excessive assumptions.

For example, the Ernie Pyle heating system consisted of three furnaces controlled by three thermostats. This system is not acceptable by today's school standards which require individual classroom temperature control, and highly controlled classroom ventilation. The mechanical engineering fee for Ernie Pyle Junior High did not cost the architect more than \$100.00.

The plumbing design on the Ernie Pyle project merely consisted of locating plumbing fixtures on the architectural floor plan. No piping plans, venting plans, or plumbing details were required, and the architect paid no fee for design of the plumbing system on the Ernie Pyle project.

The Ernie Pyle structural system was a simple wood-joint roof system on bearing walls with continuous concrete footings. Today, such a structural

1. These documents are on file in the office of the writer and are available for inspection.

TABLE 2

	Ernie Pyle Jr. High Actual Figures 1947 ↓	Ernie Pyle Jr. High Estimated Costs for 1969 ↓	Additions to Grants High School 1969 ↓
Site drawings	1		1
Structural drawings	2		5
Architectural drawings	3		7
Mechanical drawings	1		5
Electrical drawings	0		8
Total number of sheets of drawings	7		26
Number of pages of specifications	37		118
Construction cost	\$126,351.00	\$230,000*	\$237,648.00
Fee at 5%		\$ 11,500	
Fee at 6%		\$ 13,800	
Fee at 7%		\$ 16,100	
Difference between 5% and 7% fees		\$ 4,600	
Structural Engineer fee	\$ 75.00		\$ 1,043.68
Mechanical Engineer fee	\$ 100.00		\$ 1,697.60
Electrical Engineer fee	—0—		\$ 1,146.00
Total Consultant fees	\$ 175.00		\$ 3,887.28

*Based upon \$16.00 per square foot.

system would hardly be considered adequate for a school by either architect or engineer. The architect on the Ernie Pyle project paid no more than \$75.00 for this structural design.

The electrical design at Ernie Pyle merely consisted of locating such electrical equipment as lights, switches, outlets, etc., on the architectural drawings. Such a set of electrical drawings would not even pass the City Building Department today. There was no electrical engineer's fee for the architect to pay on the Ernie Pyle project.

As may be seen in Table 2, the consultant fees paid by the Architect rose from \$175.00 in 1947 to \$3,887.28 in 1969 on a comparable project. This represents an increase of \$3,712.28 which nearly absorbs the \$4,600.00 increase gained by changing the fee from 5% to 7%.

To summarize the financial effect on the architect for this type of additional service, one may point out that in 1952, the consulting engineering fees paid by the firm of A. W. Boehning, Sr., amounted to 10.4% of the gross income from fees. In 1969, the consulting engineering fees paid by the firm of Joe Boehning amounted to 37.2% of the gross income from fees.² Consulting engineers are not overpaid for the services they provide. It is not fair for an architect to ask his engineers to reduce their fees when his client refuses to pay standard fees.

Records indicating architect's time spent on architectural design twenty years ago are not available to this writer. I am convinced, however, that the architect today spends more time in programming and in schematic and preliminary design. There has been a tremendous increase in building materials and technology since 1950 and today's architect must spend more time studying and analyzing materials and systems in order to select the best solution for each project. Since mechanical, electrical, and structural systems are much more sophisticated, the architect today also spends more time coordinating these systems into the overall solution. As the results of these increased services, building owners today are getting buildings far superior to those constructed 20 years ago.

The Case Study, referred to above, also found the costs of personnel employed by architects have gone up at a more rapid rate than construction costs. These increases are shown in Table 3.

TABLE 3

Percentage Increase of Personnel Over Increase in Construction Costs

Sr. designer	12% higher than construction costs
Sr. draftsman	13% higher than construction costs
Clerk	24% higher than construction costs
Bookkeeper	12% higher than construction costs

2. These documents are on file at the office of the writer and are available for inspection.

The architect's costs for providing services on the previously mentioned additions to Grants High School amounted to \$15,945.33.³ These costs include the consultant fees listed in Table 2, draftsmen's wages, principal's wages (for time spent on the project), inspector's wages, secretarial wages, and normal overhead items such as: 1) accounting and legal services; 2) blueprinting supplies; 3) donations; 4) dues; 5) subscriptions; 6) library; 7) office supplies; 8) drafting supplies; 9) business promotion; 10) taxes; 11) licenses; 12) telephone; 13) utilities; 14) insurance; 15) rent; and 16) office equipment and furniture such as mimeograph, typewriters, adding machines, drafting equipment, blueprint machine, photocopy machine, binding machine, etc.

Table 4 shows an analysis of a range of fees between 5% and 7% and shows that a difference of 1% (6% to 7%) on this particular project meant the difference between profit and loss for the architect.

TABLE 4

Fee	At 7%	At 6%	At 5%
Fee	\$16,635.36	\$14,258.88	\$11,882.40
Costs	15,945.33	15,945.33	15,945.33
Profit or (loss)	\$ 690.03	(\$ 1,686.45)	(\$ 4,062.93)

The standard architectural contract today calls for the client to pay the exact cost of reproduction of drawings and specifications that are required to provide the bidding contractors and major subcontractors with the information they need to compile their best bid. It is in the interest of the client to provide adequate drawings and specifications to bidders in order to obtain the best bid.

The preamble to the 1968 Fee Schedule states, "This schedule applies to all structures similar to respective types listed and represents a *fair fee below which adequate architectural services cannot be expected.*" (Emphasis placed by this writer.)

To those clients who want to "safeguard life, health, and property, and to promote public welfare," but are *not* paying adequate compensation to their architect, I humbly request that you honestly reconsider the fees you are paying with respect to the responsibilities you place on your architect. Are you receiving the best possible professional service for your fee?

To those architects who consistently attempt to provide architectural services for substandard fees, I sincerely request you to honestly review the value of your service. Are you consistently providing the best architectural services you possibly can?

— Joe Boehning, A.I.A.

3. Cost documents are on file at the office of the writer and are available for inspection.

Schedule of Recommended Fees—



FROM CONCEPT TO COMPLETION



Exclusive distributors for **TAYLOR**

Consultation Planning Design Layout

Criteria, skill, artistry and experience are fused to produce laboratory furniture meeting the most exacting requirements of contemporary science educators and architects. Units immediately available and within the reach of any school or institutional budget.

Architects use our design consultation services for:
Science Labs / Offices / Artrooms / Dormitories /
Libraries / Auditorium Seating / Home Economics
Labs / Gymnasiums

UNIVERSITY BOOK STORE ALLIED SUPPLY CO.

2122 Central, SE
Phone 243-1776
Albuquerque, N. M.



Outside heat raises inside cooling costs. Zonolite can help reduce the problem at its foundation.

Look into Zonolite® Masonry Fill Insulation. It's incredible stuff. To put it another way, it's a lightweight, free-flowing, water-repellent, vermin-proof, rot-proof, fire-proof, sound-deadening, inorganic, granular vermiculite!

Year after year, it can deliver savings in cooling and heating dollars that far exceed the initial cost of the fill.

Other virtues? Yep.

Zonolite® Masonry Fill Insulation reduces sound transmission 20% to 31%. It increases a 2-hour fire rating to 4. It pours in at the rate of 28 square feet per minute. It's acceptable in FHA-financed housing.

Want all the details, test data, specifications, and such?

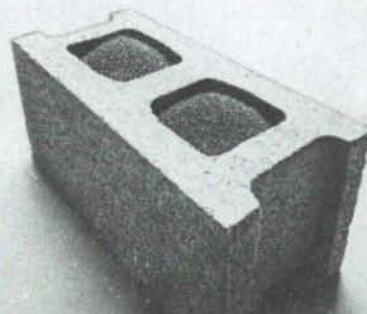
Say the word!

"U" VALUES—concrete block walls

Wall Thickness, Inches	Type of Block	Block Only	
		Uninsulated	Insulated
6	Lightweight	.40	.26
	Heavyweight	.33	.17
8	Lightweight	.53	.36
	Heavyweight	.33	.12
12	Lightweight	.46	.25
	Heavyweight	.33	.12

ZONOLITE

Southwest Vermiculite Co., 5119 Edith Blvd. N.E.
Albuquerque, New Mexico 87107



NEW MEXICO SOCIETY OF ARCHITECTS

Schedule of Recommended Fees

for compensation related to construction costs

This schedule applies to all structures similar to respective types listed, and represents a fair fee below which adequate architectural services cannot be expected. Percentages are based on Project Construction Cost as defined in "Standard Form of Agreement Between Owner and Architect."

FEES FOR BASIC SERVICES

CONSTRUCTION COST	GROUP A	GROUP B	GROUP C	GROUP D	GROUP E
UP TO \$50,000.....	7.5%	8.0%	8.5%	9.0%	12.0%
50,000 TO 100,000.....	7.0%	7.5%	8.0%	8.5%	10.0%
100,000 TO 300,000.....	6.0%	7.0%	7.5%	8.0%	9.0%
300,000 TO 1,000,000.....	6.0%	7.0%	7.0%	8.0%	- - -
1,000,000 TO 3,000,000.....	5.0%	7.0%	7.0%	7.0%	- - -
OVER 3,000,000.....	5.0%	6.5%	7.0%	7.0%	- - -

FOR PROJECTS OF INTERMEDIATE VALUE, PERCENTAGES MAY BE INTERPOLATED.

Group A—Simplified Utilitarian Building, such as:
lofts, warehouses, parking garages.

Group B—Conventional Character, such as: private
and public schools and colleges, office buildings,
banks, hotels, apartments, motels, stores, recrea-
tional buildings, public buildings, dormitories,
fire stations, shopping centers, factories and in-
dustrial armories.

Group C—Complex Buildings, such as: restaurants,
transportation terminals, libraries, museums,
broadcast facilities, newspaper and printing
plants, mortuaries, auditoriums and theaters,
churches and synagogues, doctors' offices, laun-
dries.

Group D—Specialized, Complicated Buildings, such
as: hospitals, clinics, laboratories, penal buildings,
sanitaria, mental institutions.

Group E—Single Family Residences.

State and municipal sales taxes are to be added to
all fees.

The above fees apply to lump sum, single contractor
contracts. Add the following percentages to the
basic fee when these conditions are involved:

- (1) When more than one contract is to be
awarded for construction, add one percent
(1%) to the appropriate fee.
- (2) When a cost plus fee contract is to be
awarded for construction, add one percent
(1%) to the appropriate fee.

(3) When cost plus fee contracts are to be
awarded to more than one contractor, add
two percent (2%) to the appropriate fee.

(4) For alterations and/or additions to existing
structures, a minimum of one-fourth ($\frac{1}{4}$)
the basic rate should be added. This rate
should be increased by a greater amount for
historic restorations.

PAYMENT FOR REIMBURSABLE SERVICES

Payment for reimbursable services as described in
the current editions of "Services of the Architect" and
AIA Document B131 "Standard Form of Agreement
Between Owner and Architect" should be computed
at actual cost.

PAYMENT FOR ADDITIONAL SERVICES

Payment for additional services as described in the
current editions of "Services of the Architect" and
AIA Document B131 "Standard Form of Agreement
Between Owner and Architect" should be computed
as follows:

- (1) Principals' time at agreed fixed rate per
hour.
- (2) Payroll cost of employees multiplied by a
factor to cover overhead and fee. The fac-
tor normally should range from $2\frac{1}{2}$ to $3\frac{1}{2}$
depending on the nature of the project and
scope of services.
- (3) Additional services of professional consul-
tants at an agreed multiple of the amount
billed the architect.

Recommended fee schedules are developed from time
to time with various Federal Agencies. These are on
file and may be consulted at the offices of The Amer-
ican Institute of Architects in Washington.

KINNEY BRICK COMPANY INC.

Manufacturers of:

- Common Brick
- Patio Brick
- Face Brick
- Roman Brick
- Norman Brick
- "SCR" Brick

Distributors for:

- Summit Brick Co.
- Acme Brick Co.
- Major Brick Co.
- Eureka Brick Co.
- Texas Clay Products
- ● ● ● ● ● ● ●

Samples and information upon request

Visit Our Office & Showrooms at Plant
5 miles South just off of Second Street
ALBUQUERQUE, NEW MEXICO

Phone 877-4550 P.O. Box 1804, 87103

McMillan & Associates, Inc. CONSULTING MATERIALS ENGINEERS



2501 Candelaria Road, N. E.
345-3681
Albuquerque, New Mexico

- Laboratory and Field Testing of Construction Materials
- Subsurface Soil Investigations
- Experienced Personnel for Plant Inspection and Calibration



INC.

● 2508 Monroe, N.E.
ALBUQUERQUE, N. M.
256-9883

- Store Front and Window Wall
- Porcelain, Plexiglas and Aggregate Panels
- Plastic and Glass Skylights
- Fiberglass Bath Compartments
- Glass Tinting Film

Call for technical details

TELEPHONE (505) 247-4131

ALBUQUERQUE, NEW MEXICO 87110

EDITH AT ARVADA, N.E.

POST OFFICE BOX 3247

THE MAYHEW COMPANY

N S L

PARTITION SPECIALISTS --

MASONITE

Movable
Office
Partitions

SUPERIOR

Folding
Corridor
Partitions

SUPERIOR

Wire
Mesh
Partitions

WON-DOOR

Folding
Sound &
Fire
Partitions

Toilet partitions and movable
partitions stocked in
Albuquerque!



Beautiful . Enduring . Inexpensive
Natural Building Stone
. . from the Land of Enchantment



3219 CLAREMONT AVENUE N.E.
ALBUQUERQUE, NEW MEXICO

344-2611

Chateau

*Architectural Millwork
of
Elegance & Distinction*

CHATEAU MILL & MANUFACTURING CO., INC.
3417 Girard N. E. Albuquerque, N. M.



PANEL SYSTEM
202
AND TOILET
COMPARTMENTS



FORMICA® brand Panel System 202 goes right over almost any structurally sound wall . . . no tearing down . . . goes up in a day or less! Perfect anywhere moisture is a problem. Formica Brand Laminated Plastic is the ideal surfacing material for toilet compartments and other restroom partitions, for the same reason it serves so handsomely on surfaces in other parts of a building.

FORMICA DISTRIBUTOR



FORMICA REPRESENTATIVE
RICHARD P. KASSA
268-4589

"Buffalo"

**BUFFALO
FORGE
COMPANY**

Air Pollution Control

Air Handling, Cleaning
and Conditioning Equipment

Fans, Blowers & Pumps

247-1508
Albuquerque,

P. O. Box 216
New Mexico

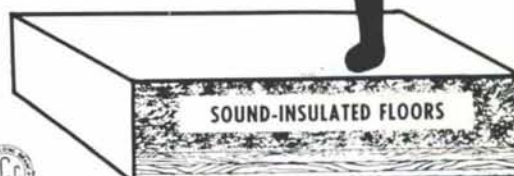
MAN, TAKE IT FROM A
"CAT" WHO GETS 'ROUND

by

Elastizell

PURRR FECT
STEP
ON IT DAD!

The system has a sound rating of 50 STC, and up to 56 F-STC can be realized by combining it with a resilient channel mounted ceiling. INR of plus 20 and more are experienced with pad and carpet covering.



The one-day application of an ELASTIZELL insulated floor begins with standard framing covered with 5/8-inch thickness of fir plywood or 1 x 6 subflooring as shown above.

**FOR COMPLETE INFORMATION
Call or Write**



2906 Broadway NE-87107 (505) 345-3621

10 Years 10

With this issue the "editorial staff" completes its tenth year of association with **New Mexico Architecture** magazine.

The September-October, 1960 issue of NMA contained a simple announcement —

New Editors for the **NMA**. With this issue the **NMA** enters an interim under new editors. John Conron and Bainbridge Bunting jointly will serve as editors during the year's absence of Dr. David Gebhard. David has taken a leave of absence from his post as director of the Roswell Museum to teach on a Fulbright appointment — architectural design and history at the University of Istanbul."

That "interim" period has lasted a little longer than the expected one year! David did return to the United States upon completion of his teaching assignment in Istanbul, but he landed at the University at Santa Barbara, California, rather than in Roswell, New Mexico.

The June issue of **Symposia** magazine wishes itself a Happy Fourth Birthday, and releases the statistic that "four years of **Symposia**—laid end to end—measures exactly forty-four linear feet." I can only counter with the deflating fact that 10 years of **New Mexico Architecture** measures some 7½ inches standing on the bookshelf.

It has been 60 challenging issues and ten fascinating years. And now on to the September-October issue and year eleven.

John P. Conron AIA/AID

Contributor to this issue . . .

Harvey Mudd II, a rancher in Arroyo Hondo, Taos County, a member of the state board of New Mexico Citizens for Clean Air and Water, and a Board Member of the John Muir Institute, came to

New Mexico five years ago from New York City. The quality of New Mexico's environment was a major reason for his coming to the state. For further information write to Box 748, Arroyo Hondo, New Mexico 87513.

new mexico architecture nma

Published bi-monthly, by the New Mexico Society of Architects American Institute of Architects, a non-profit organization, Box 7415, Albuquerque, N. M. 87104.

Editorial Correspondence: All correspondence should be addressed to John P. Conron, P. O. Box 935, Santa Fe, New Mexico 87501.

Editorial Policy: Opinions expressed in all signed articles are those of the author and do not necessarily represent the official position of the New Mexico Society of Architects, A.I.A.

No responsibility will be assumed by the editor or publishing organization for unsolicited contributions. Return postage should accompany all unsolicited manuscripts.

Subscriptions: Write Circulation New Mexico Architecture, Box 7415, Albuquerque, N. M. 87104. Single copy 50c. Yearly subscription \$2.50.

Change of address: Notifications should be sent to New Mexico Architecture, Box 7415, Albuquerque, N. M. 87104 at least 45 days prior to effective date. Please send both old and new addresses.

Advertising: Requests for rates and information relating to advertising should be addressed to New Mexico Architecture, Box 7415, Albuquerque, N. M. 87104. or Rob't. G. Mallory, 115 Amherst Dr. S. E., Albuquerque, N. M. 87106.

INDEX TO FIRMS cooperating in the public relation program of the NMA magazine, making possible its publication and the page upon which their message may be found.

Albuquerque Gravel Products Company	7
Albuquerque Lumber Company	4
Albuquerque Testing Laboratory	23
Architectural Systems Co.	23
Artesanos Imports, Inc.	23
Atlas Building Products Co.	14
Buffalo Forge Co.	21

Builders' Block & Stone Co., Inc.	6
Chateau Mill & Manufacturing Co., Inc.	21
Design Interiors, Inc.	8
El Rey Stucco Co.	5
Featherlite Tile Company	7
Frontier Roofing Co.	7
Goodrich Roofing Co.	4
Hanley Paint Mfg. Co., Inc.	7
Hydro Conduit Corp.	24
James & Cooke, Inc.	4
Jaynes Corporation	21
Keyson Applied Coatings, Inc.	6
Kinney Brick Co., Inc.	20
Landes, Zachary and Peterson Co.	6
Lumber Merchandisers Association	8
Mayhew Company, The	20
McGill, George B.	5
McMillan and Associates	20
New Mexico Marble and Tile Co.	23
Plasco, Inc.	20
Prestressed Concrete Products, Inc.	2
Public Service Company of New Mexico	14
Rocky Mountain Stone Co.	20
Southern Union Gas Co.	5
Southwest Vermiculite Co.	18
Stryco Sales, Inc.	21
Technical Service Co.	20
University Book Store	18
Wellborn Home Decorating Center	4
Whiting Co., Inc., Donald G.	2

ALBUQUERQUE TESTING LABORATORY

Sub-soil Investigations
For Structural and Dam Foundations

**Two Drills and Crews now
available for Prompt Service**

Laboratory Analysis and
Evaluation of Construction Materials

**All work done under the supervision
of Registered Professional Engineers**

532 Jefferson St. N.E. — P. O. Box 4101
Phone AL 5-8916 Albuquerque
Phone AL 5-1322 New Mexico

ARCHITECTURAL SYSTEMS COMPANY

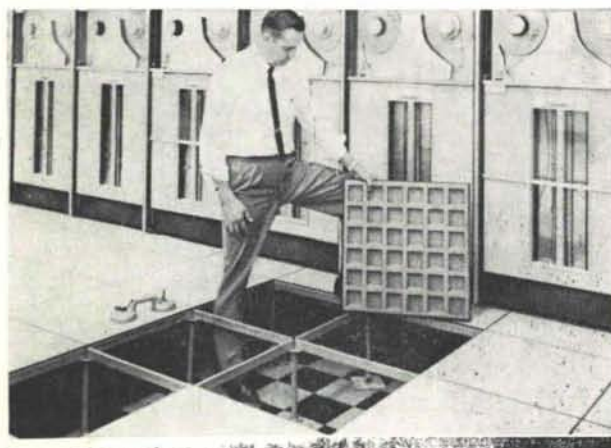
ACOUSTICAL CEILINGS
BUILDER'S HARDWARE
DEMOUNTABLE
PARTITIONS

Box 3624
Albuquerque
345-3491

Earl A. Boule
Gerald P. Shultz A.H.C.
Don Welker

THE INFINITE ACCESS FLOOR

The sensible answer to the problem of under-floor accessibility for cables—heating, cooling, conduit, piping, conveyors, etc.



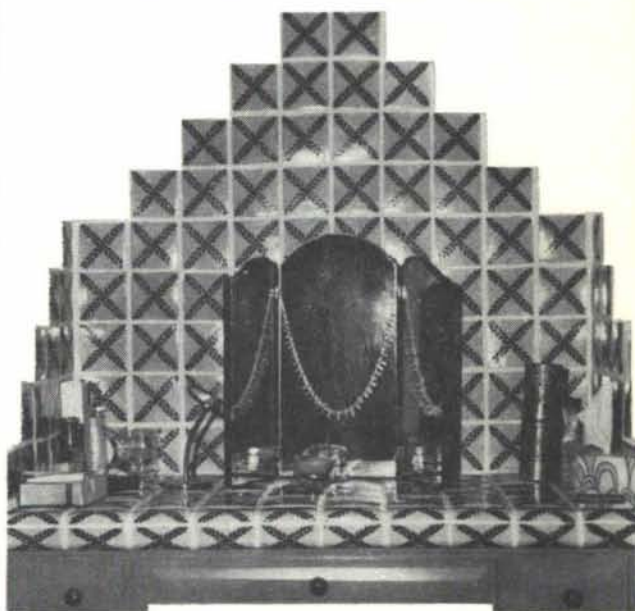
The Tate Floor System, as installed by New Mexico Marble & Tile Co. offers the advantages of: The high strength of steel, interchangeable floor panels, fire resistance, low cost, lateral stability, permanent floor level, cut-out flexibility, dimensional stability, unaffected by temperature or humidity, owners choice of floor covering.

Ask us for details of this
revolutionary floor system.

**NEW MEXICO
MARBLE AND TILE CO.**
414 Second St., S. W. Albuquerque, N. M.
P. O. Box 834 • Phone 243-5541

What is so special about
Artesanos' Mexican Tile?

Talavera



Artesanos Imports Co.

222½ GALISTEO STREET — PHONE 505-983-5563
SANTA FE, N.M. 87501

John Gaw Meem, FAIA
Box 1924
Santa Fe, N.M. 87501

Bulk Rate
U. S. Postage
PAID
Roswell, N. M.
Permit No. 47

CONCRETE . . .

THE VERSATILE, ADAPTABLE BUILDING MATERIAL
OF LASTING BEAUTY.



New Mexico architecture
LIBRARIES - UNIVERSITY OF
NEW MEXICO
Received on: 04-20-90

KRUGER, LAKE and HENDERSON
ASSOCIATED ARCHITECTS
AND ENGINEERS

O'Donnell Hall, Graduate Facility, College of Teacher Education, New Mexico State University, University Park, N. M., a classic example of the use of concrete in virtually every phase of the structure. A three-story high structure of cast-in-place concrete columns and beams with prestressed concrete tee floor and roof slabs.

The framework is faced with precast exposed aggregate concrete panels, varying in color and texture to distinguish between the different parts of the building; a pinkish, coarse aggregate for the panels of the main structure; a white and small aggregate for the parapet panels; and ochre colored, large aggregate and fluted wall slabs at the elevated auditorium.

Retaining walls, garden walls and paved areas of exposed aggregate finish and an exterior stair with center string and cantilevered steps of terrazzo as well as circular terrazzo benches extend the material quality of the building over into its surroundings.



HYDRO CONDUIT CORPORATION

2800 SECOND ST., SW • ALBUQUERQUE, NEW MEXICO 87103