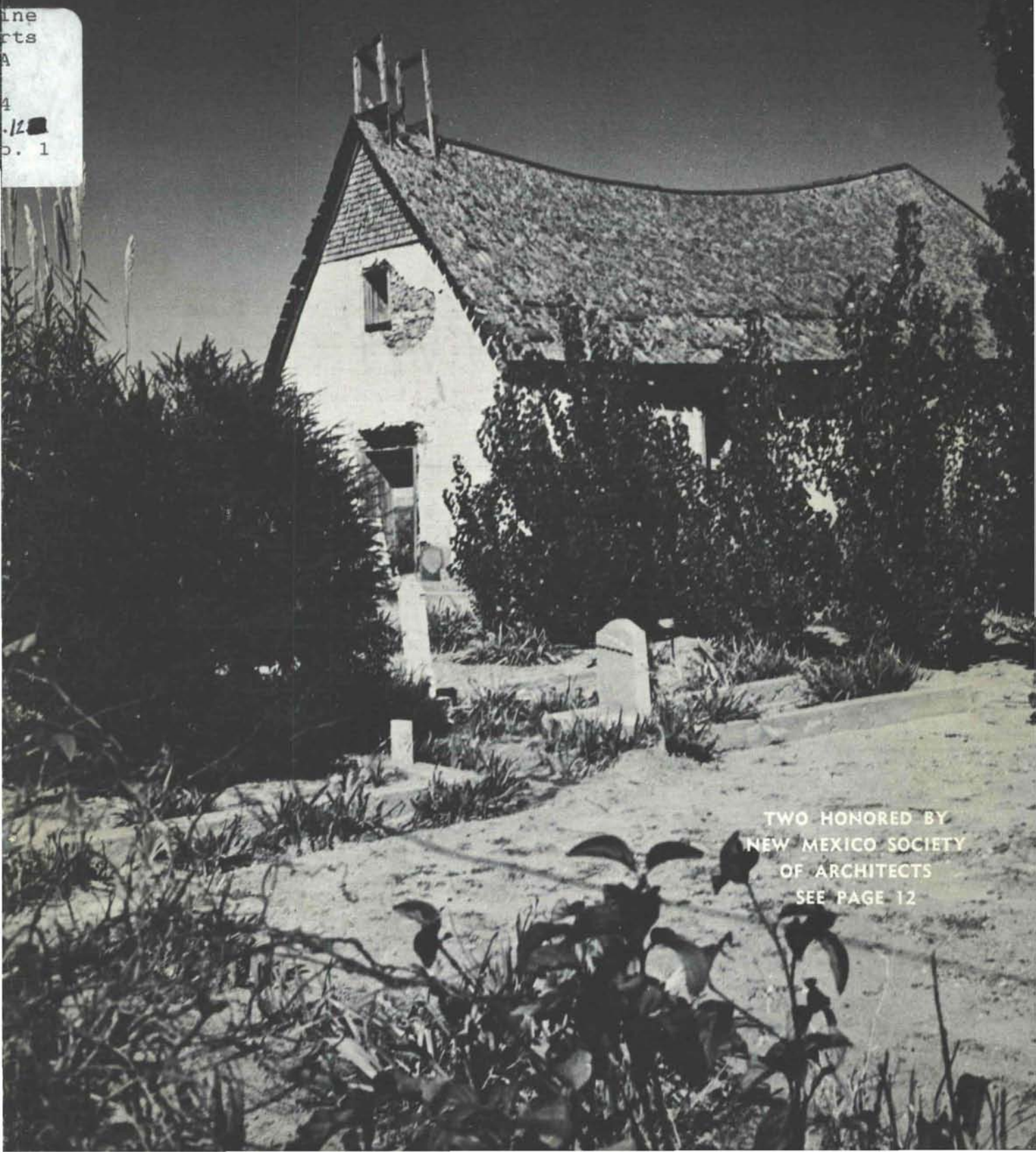


new mexico architecture

january-february 1970 50c

12
1970

line
rts
A
4
-12
b. 1



TWO HONORED BY
NEW MEXICO SOCIETY
OF ARCHITECTS
SEE PAGE 12



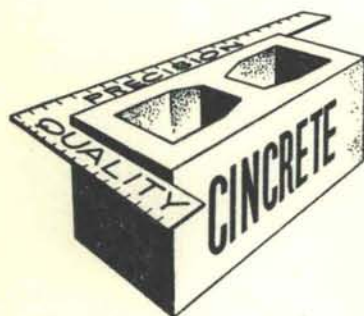
this office has practically no heating expense . . .
most of the heat is provided by light!

Today, heat recovered from fluorescent luminaires is a practical working reality in hundreds of installations throughout the country. During the times when modern, well-lighted buildings are occupied, Heat-With-Light delivers free comfort heating energy at savings of thousands of dollars!

Of the total energy input to a fluorescent lamp, 80% of the energy is released in the form of heat. Knowing this, it became a simple matter to design a duct-fan system, to move air through luminaires, picking up surplus heat and moving it out to warm a space. In summer, the same system moves the heat outdoors, taking an enormous load off air conditioning equipment.

Contact us today for complete details on applying the Heat-With-Light system for your next building.

Engineering Sales Department
Public Service Company of New Mexico
Telephone: 842-1331
Post Office Box 2267
Albuquerque, New Mexico 87103



serving New Mexico
and the El Paso area
with

Quality Concrete Masonry Products and many allied building materials

Modernfold Wood and Plastic Folding Doors

*Hollow Metal Doors and Frames
Steel and Formica Toilet Partitions
Commercial Toilet Accessories
Residential and Commercial Steel and Aluminum Windows*



*Reinforcing and Fabricated Steel
Commercial Hardware
Moderncote Vinyl Wall Covering*

Builders Block & Stone Co., Inc.

P. O. Box 1633
Roswell, N. M. 88201
505 622-1321

Builders Block & Stone Co., Inc.

P. O. Box 10284
Albuquerque, N. M. 87114
505 344-0851

Builders Block & Supply Co., Inc.

P. O. Drawer FF
Las Cruces, N. M. 88001
505 524-3633

Builders Block & Supply Co., Inc.

Telephone
El Paso
915 532-9695

Members: New Mexico Concrete Masonry Association, National Concrete Masonry Association

nma

vol. 12 • nos. 1 and 2 • jan. - feb. 1970 • new mexico architecture

NMA News	9
New Mexico Arts Commission Announces 2nd Award Program—The Continuing Story of the Alvarado Hotel—Deadline Albuquerque Chapter Award Entries—1970 Officers AIA	
Historic Sites Being Preserved	10
by Merle Clark	
The New Mexico Society of Architects Awards Citations of Honour	12
W. Miles Brittle, Sr.—Dr. Bainbridge Bunting	
Old Santa Fe—	15
and what to do about it— by John W. McHugh AIA	
Death Comes to W. Miles Brittle, Sr.	17
Wilson Park Swimming Pool	18
Jess Holmes AIA—Architect	
Index to Advertisers	22

(Cover — Santa Rosa da Lima Chapel — c. 1898 — Santa Rosa, New Mexico)

— Official Publication of the New Mexico Society of Architects, A. I. A. —

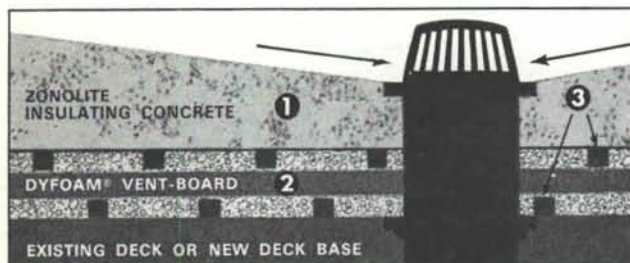
Society Officers

President—Joe Boehning
Vice President—Earl P. Wood
Secretary-Treasurer—Charles E. Nolan, Jr.
Director—Beryl Durham
Director—Duane Dorsey
Director—Terence Ross
Director—Wilbur Harris
Director—Van Dorn Hooker
Director—George Pearl
Director—John P. Conron

Commission for NMA

John P. Conron—Editor
Bainbridge Bunting—Editorial Consultant
W. M. Brittle, Sr.) —Advertising
Robert G. Mallory)
Mrs. Mildred Brittle—Financial
Secretary, Circulation
John W. McHugh
Robert B. Riley
James M. Murray, III

New double-insulated Dyzone roof deck is self-venting



1 On top, a layer of seamless, permanent Zonolite lightweight insulating concrete that can be sloped to drain easily and economically, so leak-making puddles and ponds don't stay on the deck.

2 Below, Dyfoam Ventboard. It's composed of Dyfoam expanded polystyrene boards sandwiched between laminating material. The insulating concrete combined with Dyfoam Ventboard gives you economical U values down to .03.

3 Vents are built right into the Dyfoam Ventboard. Water vapor passes through the laminating material into the vents, and is channeled out to the edges of the roof.

No joints, no tape, no adhesives, no vapor barrier are needed with the new Dyzone roof deck. A thin slurry of Zonolite insulating concrete serves as the bonding agent between deck and structure.

Zonolite roof decks can only be applied by applicators we have trained and approved. Upon completion, the decks are certified to meet specifications.

ZONOLITE GRACE	Southwest Vermiculite Co. 5119 Edith Blvd. Albuquerque, N. M. 87107		
	Gentlemen: Economical insulation down to U .03! Certified! Versatile! No messing around with joints, tape, glue or vapor barriers! Please send me complete information and specifications on DYZONE roof decks right away.		
NAME _____			
TITLE _____			
FIRM _____			
ADDRESS _____			
CITY _____ STATE _____ ZIP _____			

Now Available State Wide:
**CREATIVE
CONCRETE
PRODUCTS**



*in 6 shapes, 11 sizes
Also available in colors
made in New Mexico by*

**AGP ALBUQUERQUE
GRAVEL PRODUCTS
COMPANY**

OUR 33RD YEAR CLIMATE DESIGNING
PAINT FOR THE SOUTHWEST

HANLEY'S and the



ARCHITECTURAL PAINTS
FOR BEAUTY AND
PROTECTION

TECHNICAL COATINGS FOR
PROTECTION — FUNCTION
AND BEAUTY.

**SUNFOE
AMBASSADOR**



HANLEY PAINT MFG. CO., INC.

EL PASO, TEXAS
PH. 532-6921
PH. 755-9821

LAS CRUCES
NEW MEXICO
PH. 523-1222

ALBUQUERQUE
NEW MEXICO
PH. 265-1524

**STRUCTURAL & REINFORCING
STEEL FABRICATION**
your
STEEL SERVICE CENTER

We of the Rio Grande Steel Co., recently expanded our facilities to include our neighboring state of Arizona, with Headquarters and a fully stocked warehouse in Phoenix.

With this installation, we are now able to better serve the industry throughout the entire state of Arizona.

Arizona now, as in New Mexico, has its own
STEEL SERVICE CENTER

RIO GRANDE STEEL CO.
Albuquerque—Farmington—Phoenix

Roofing and Sheetmetal Contractors



Corporation of Albuquerque

711 WHEELER AVE. S.E.
TEL. 243-3788
ALBUQUERQUE, NEW MEXICO 87103

**FROM
CONCEPT TO
COMPLETION**



Exclusive distributors for TAYLOR

**Consultation
Planning
Design
Layout**

Criteria, skill, artistry and experience are fused to produce laboratory furniture meeting the most exacting requirements of contemporary science educators and architects. Units immediately available and within the reach of any school or institutional budget.

Architects use our design consultation services for:
Science Labs / Offices / Artrooms / Dormitories /
Libraries / Auditorium Seating / Home Economics
Labs / Gymnasiums

**UNIVERSITY BOOK STORE
ALLIED SUPPLY CO.**

2122 Central, SE
Phone 243-1776
Albuquerque, N. M.



design interiors, inc.

5021 lomas n. e., albuquerque
268-4307



interior planning
professional design service
contract sales

WOOD is WARM and WONDERFUL!

MEMBERSHIP:

BALDRIDGE HOME SUPPLY CENTER
GIBSON LUMBER CO.
HOME BUILDERS SUPPLY CO.
BOSQUE FARMS LUMBER CO.

AMERICAN BUILDERS SUPPLY CORP.
SANDIA LUMBER CO.
APACHE LUMBER CO., INC.
GEORGIA - PACIFIC CORP.

U. S. PLYWOOD CORP.
DUKE CITY LUMBER CO.
NEW MEXICO TIMBER INC.

These are the experts on wood and wood products to contact
for information and consultation . . . members of



LUMBER MERCHANDISERS ASSOCIATION

ALBUQUERQUE, NEW MEXICO

Landes, Zachary & Peterson Co.

2137 Mills Ave.
El Paso, Texas
915-533-9060

4800 Pan American Hwy., N. E.
Albuquerque, New Mexico
505-345-2405

DISTRIBUTORS FOR:

UNISTRUT Metal Framing
TELESPAR TUBING

KEENE PENN METAL Movable Partitions
LOGAN Wire Partitions

Also Racks, Shelving & Other Architectural Products
— Please Call For Design Assistance —

DOVER
ELECTRIC
ELEVATORS
FOR HIGH-RISE BUILDINGS

Mr. Architect . . .

let us show you why a large percent
of Building owners in New Mexico
rely upon us for dependable Vertical
Transportation.

Hunter-Hayes Elevator Co.

106 Buena Vista S.E.

Albuquerque, N. M. 87106



HUNTER-HAYES ELEVATOR CO.
SUBSIDIARY ■ DOVER CORP.

Offices Throughout the Southwest



BANK OF NEW MEXICO Albuquerque, N. M.

3. High Speed Automatic Elevators

1. Rotary Oildraulic Elevator

Many other installations in New Mexico



WE CAN DO A QUALITY BUILDING
JOB FOR YOU AT LESS COST WITH

WEYERHAEUSER LAMINATED WOOD BEAMS

WEYERHAEUSER LAMINATED WOOD ARCHES

WEYERHAEUSER LAMINATED WOOD DECKING

See us for complete Weyerhaeuser Structural Roof Systems.
We can do the complete job from estimate through erection.
Call for estimates or more information.



Weyerhaeuser Architectural Specialty Dealer

ALBUQUERQUE

1881

Lumber COMPANY

1970

3825 Edith, N.E.

Phone 345-2511

McMURTRY PAINT & GLASS

A VALSPAR COMPANY

Complete Architectural Services

for

Paints and Glass

Distributors for:

VALSPAR PAINTS

L.O.F. GLASS

Complete line of—

Fine carpets and drapes

Industrial Coatings

Wallpapers

1008 Marquez Pl.

Phone 982-4661

20 years in

SANTA FE, NEW MEXICO

MULTI-PURPOSE CONCRETE



OWNER & CONTRACTOR
BROWN & RUTLEDGE CONSTR. CO.

Another building fabricated entirely of precast - prestressed concrete. A multi-purpose store and warehouse building constructed with prestressed, precast 8' twin tee wall and roof members. The 11,000 square foot building was erected in only four days. The all concrete building . . . practical and economical.

PRESTRESSED 
CONCRETE PRODUCTS, INC.

1304 Menaul Blvd. N.E., Albuquerque, N.M. 87106 (505) 345-2536

Variations on a theme :

NEW *Spectra-Glaze*®

**glazed masonry units
DESIGN SERIES**

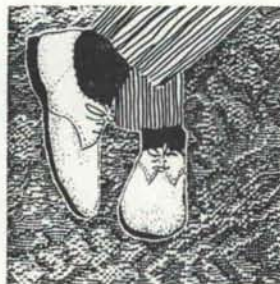
(not an alternate for
any other material)

Your choice in color, texture, form, scale and pattern . . .
Select from a variety of scored units to reduce scale for as little as a nickel extra per block . . . Build, decorate and finish in a single operation. Thru wall, load bearing units eliminate expense of back-up wall . . . Specify *Spectra-Glaze* glazed concrete units in your base bid to realize their unique advantages of design flexibility combined with lower-in-the-wall costs . . . Local, delivery, world-wide.

Ⓢ Cataloged in SWEET'S

(R) Reg. U. S. Pat. Off. Canada & other countries by The Burns & Russell Co.
FEATHERLITE TILE COMPANY P. O. Box 489, Erskine Rd.
LUBBOCK, TEXAS 79408 Phone 809 & PO-3-8202

TRAFFIC CARPET



BY LEES

PROVEN PERFORMANCE CARPETS IN WOOLS, NYLONS, ACRYLICS SPECIFICALLY DESIGNED FOR HEAVY TRAFFIC USE IN COMMERCIAL BUILDINGS, CHURCHES, OFFICES, SCHOOLS, ETC. LET WELLBORNS SHOW YOU SAMPLES FOR ULTIMATE PATTERN AND COLOR SELECTION.

Wellborn **HOME
DECORATING
CENTER**

2714 4th ST. N. W.

PHONE 344-3558

ALBUQUERQUE, NEW MEXICO 87107

NEW MEXICO ARTS COMMISSION ANNOUNCES 2ND AWARDS PROGRAM

Entries are now being solicited for the New Mexico Arts Commission awards program. The awards are given in two categories as outlined below:

1) "AWARD FOR EXCELLENCE" IN NEW CONSTRUCTION

In order to recognize significant and distinguished contributions to the total environment, the New Mexico Arts Commission and the New Mexico Society of Architects hereby establish an annual Award for Excellence for new or recent construction.

The award will be presented to designers of structures which have been built within the state of New Mexico, and which enhance the environment for Man.

2) "AWARD FOR EXCELLENCE" IN THE FIELD OF HISTORIC PRESERVATION

It is an established fact that the retention of the historical records of man's achievement is of immense value to present and future generations. Historical buildings, artifacts, and sites are the visual catalogue of that heritage.

Accordingly, the New Mexico Arts Commission and the New Mexico Society of Architects hereby establish an Award for Excellence in the field of Historic Preservation. This award will recognize valuable efforts in the preservation of significant architecture, artifacts, or sites of historical importance.

The New Mexico Society of Architects undertakes to administer these awards programs. Similar awards in both categories will be presented to the designers and owners of the structures to be recognized. It is planned that copies of the award certificates will be

presented to those additional persons who have been instrumental in the construction, design, or preservation of the recognized structure.

The nominations for either award category are not limited to architect designed buildings. Any structure is eligible—a bridge, a dam, a house, a barn, a site, or a monument.

Nominations are solicited from architects, engineers, planners, landscape architects, historical societies, garden clubs—any person, or any organization.

The committee appointed by the New Mexico Society of Architects wants to see all that has been constructed or preserved throughout New Mexico which might warrant consideration for these awards.

No rules or restrictions are placed upon the presentation of entries. It is nominations which are solicited, not expensive and elaborate brochures. However, sufficient pictorial and documentation material must be submitted to explain the nomination to the jury.

*The Deadline for Receipt of Nominations is June 1, 1970
Send to: John P. Conron,
Box 935, Santa Fe, N. M. 87501*

THE CONTINUING STORY OF THE ALVARADO HOTEL

The Albuquerque City Commission has appointed a committee for the Preservation of the Alvarado-Santa Fe Station Complex. Named to the committee were Ben G. Raskob, Frank A. Mapel, Oscar Love, Dr. Eldred Harrington, Richard G. Worthen, AIA, George Pearl, AIA and Mrs. Ruth Armstrong.

The Alvarado Hotel was closed on January 2, 1970. The Santa Fe Railway, owner of the complex, has scheduled the structure for demolition early in the year. However, railway officials have expressed a desire to work with the city in an effort to find possible solutions to the *Alvarado Affair*.

DEADLINE SET FOR ALBUQUERQUE CHAPTER AWARD ENTRIES

The 1969-1970 Honor Awards Program has been announced by the Albuquerque Chapter, AIA.

All entries shall be executed architectural projects designed by architects who are members of the Albuquerque Chapter, American Institute of Architects, and shall have been completed between the period of October 1, 1967 and December 31, 1969. The Program is open to architectural projects of all classifications.

All completed entries must be received no later than 5:00 p.m. (M.S.T.) February 20, 1970 at the office of the Secretary to the Chairman of the Department of Architecture, Architecture Building, University of New Mexico.

Complete details and rules are listed in the recent *Bulletin* published by the Albuquerque Chapter, AIA.

Questions regarding the competition should be directed to: Jess Holmes, AIA, 2841 San Mateo, N. E., Albuquerque, New Mexico. Telephone 265-8866.

1970 OFFICERS AIA

ALBUQUERQUE

President—Van Dorn Hooker
Vice-President—John P. Varsa
Secretary—Channell Graham
Treasurer—John J. Heimerich
Directors: Bob Campbell
Jess T. Holmes, Jr.
George C. Pearl

SANTA FE

President—Terence W. Ross
Vice-President—Ted C. Luna
Secy.-Treasurer—Lewis W. Walker
Directors: Charles R. Lugton
Ted C. Luna

SOUTHERN

President—Duane Dorsey
Vice-President—Cabot Dysart
Secy.-Treas.—James M. Murray
Directors: Charles E. Nolan, Jr.
Wilbur T. Harris

Historic Sites Being Preserved

New Mexico is well under way with its federally-supported historic preservation program and a state plan for the project is expected sometime next year. Here is a story on the fledgling program as prepared by the State Planning Office and first published in the Albuquerque Journal.

BY MERLE CLARK State Planning Office

The first state in the nation to get under way with a federally supported comprehensive historic preservation program, New Mexico has all but completed its survey of historic properties and will publish a state plan by mid-1970. The overall objective of the program is to identify, evaluate and record the state's important historic properties and to formulate a long-range schedule for the development and preservation of sites judged to be of outstanding significance.

Responsibility for the program was placed with the State Planning Office early in 1968, and financial aid was supplied by the U. S. Dept. of Housing and Urban Development.

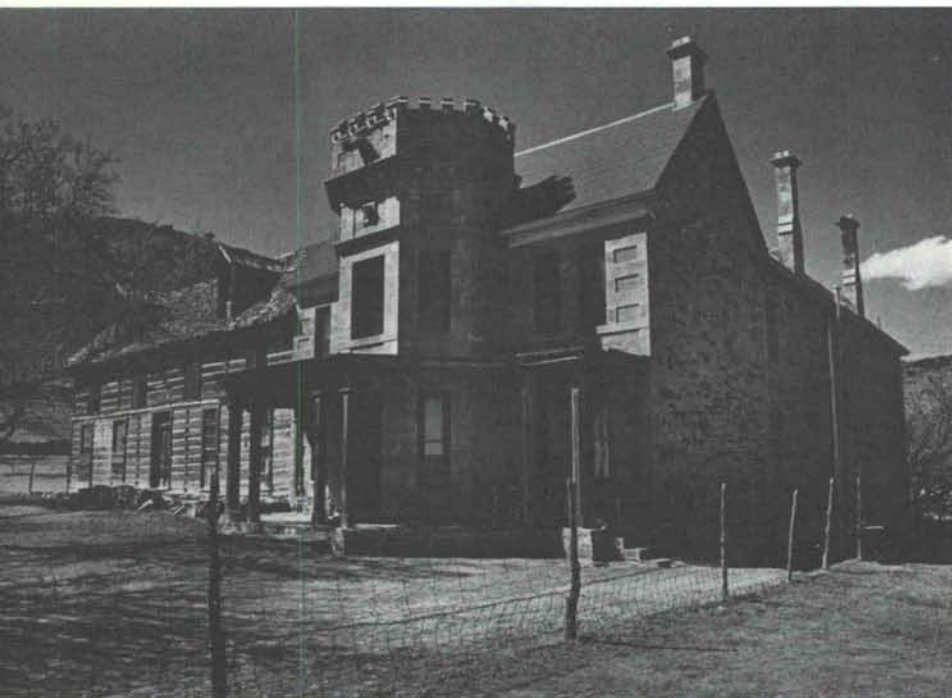
To date about 600 properties have been considered, and of these approximately 150 have been judged to be of unusual historic importance and have been permanently recorded on registers established for this purpose at the state and national levels. A property which received both state and national recognition recently is Albuquerque's San Felipe de Neri Church located in Old Town. Thirty-nine additional sites situated in 19 counties have received similar recognition, and others will be added soon.

To assist in the survey of historic properties, the

Planning Office enlisted the aid of the Museum of New Mexico and recruited 31 local advisory committees in as many communities scattered throughout the state. Other state agencies, including the Dept. of Development, the Highway Dept., the State Parks Commission, and the Dept. of Game and Fish have contributed aid and advice.

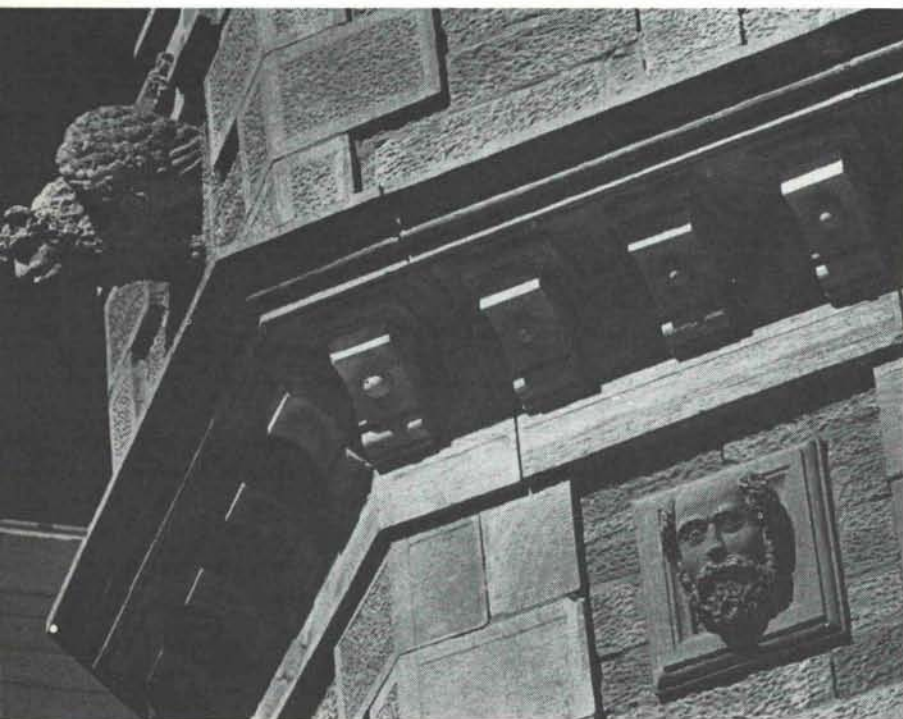
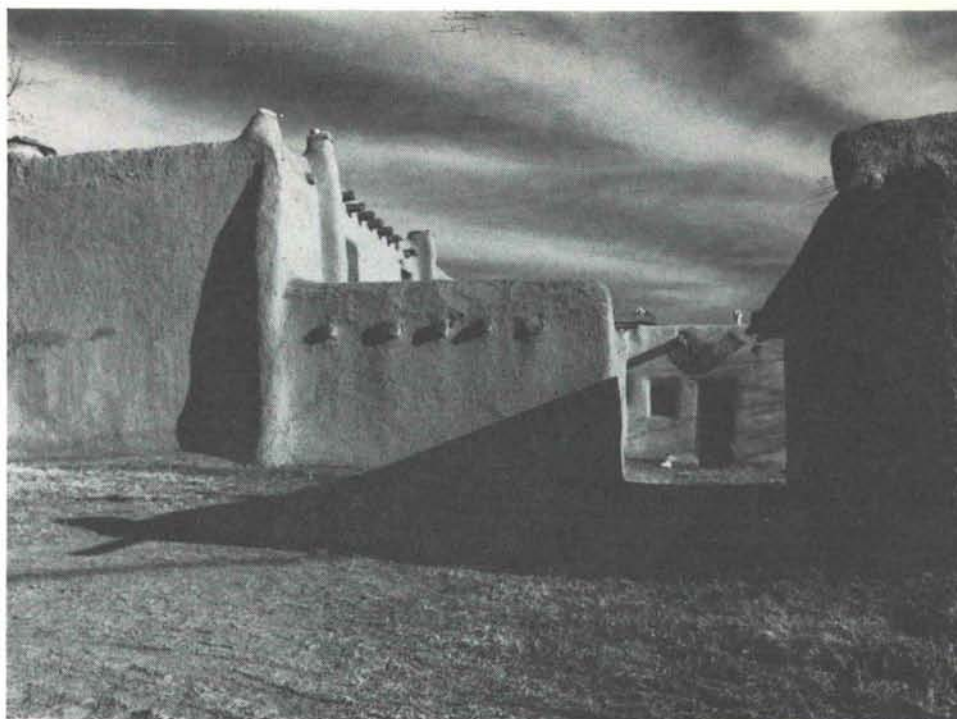
A major accomplishment was the passage during the last legislative session of the Cultural Properties Act of 1969. This act replaces the state's old antiquities legislation, provides for a continuing program in historic preservation, and establishes a professional review committee which meets the rigid requirements of cooperating federal agencies. On the committee at present are attorney Gilberto Espinosa, architect George Pearl, and editor-publisher Jack Rittenhouse of Albuquerque; historian Dr. Marc Simmons of Cerrillos; and State Historian Dr. Myra Ellen Jenkins, archeologist Albert Schroeder, State Archeologist George Ewing, and designer-architect John Conron of Santa Fe. State Liaison Officer for Historic preservation is Elie S. Gutierrez who heads the State Planning Office.

Funds for the preservation of historic properties in urban areas have been made available by



The Dorsey Mansion, Chico. At a time when the Santa Fe Trail was passing into history, Senator Stephen A. Dorsey of Arkansas built this unusual dwelling not far from Point of Rocks, a famous trail landmark in southeastern Colfax County. It is owned today by the Deatons who keep it open to the public, applying the proceeds of small visitor fees to the maintenance of the property. Built of logs (older section) and pink sandstone (later section) the thirty-six room structure with many ornate architectural features seems strangely out of place in the almost empty landscape east of Maxwell. Photographs by Karl Kernberger.

Ranchos de Taos Plaza. Photographer Karl Kernberger has recorded the texture and the sculptural quality of well preserved adobe in this study of a corner of the plaza. The focal point of the plaza is St. Francis Church, for many years a favorite subject of New Mexico artists.



the U.S. Dept. of Housing and Urban Development. The Bureau of Outdoor Recreation provides assistance in the financing of outdoor recreation facilities connected with historic properties.

In 1970 it is expected that funding for more general purposes will be available through the U.S. Dept. of the Interior for properties listed on the National Register.

Under the provisions of the National Historic Preservation Act, passed in 1966, any responsible individual or organization may be eligible for this aid in the preservation of historic properties. In cases where the restored property will be open to the public, federal assistance may be as much as fifty per cent of total restoration and development costs.

Quite aside from their educational and intangible traditional values, New Mexico's vast inventory of historic properties are of incalculable value economically. Each year visitors flock to the state by the thousands to see them, and often complain that they are vandalized, neglected, or hard to find. It is hoped that the current historic preservation program will eliminate some of these criticisms. M.C.



*The New Mexico Society of Architects
Takes great pleasure in presenting this
Most intimate of its awards, the
Citation of Honour, to
W. Miles Brittelle, Sr.*

*In recognition of his many years of service to the Institute,
the Profession, and the New Mexico Architecture Magazine.*

Joe Bodini
President

Charles E. Hale
Secretary

Mr:

W. MILES BRITTELLE, SR. --

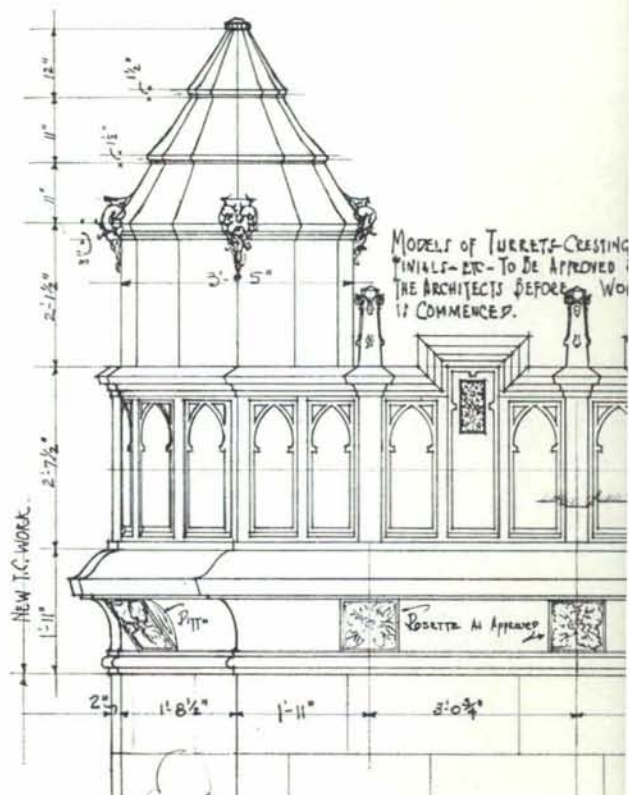
AIA EMERITUS

Miles Brittelle has been active in the profession of architecture in New Mexico since 1926. He came to Albuquerque in April of that year from Denver, Colorado, to join the firm of George Williamson. Miles became Executive Vice-President late in 1926 when the firm was incorporated.

In 1930 he formed a partnership with Trost & Trost, an El Paso firm which had many architectural commissions in New Mexico. Among the local work of the firm of Trost & Trost & Brittelle is the El Fidel Hotel, which opened in April 1932.

In 1933 Miles joined with Arthur S. Wilson to form a partnership. Subsequently John J. Ginner joined the firm as a partner. The firm of Brittelle and Ginner was one of New Mexico's leading architectural firms through the 1930's and until Miles' retirement from active practice in 1962.

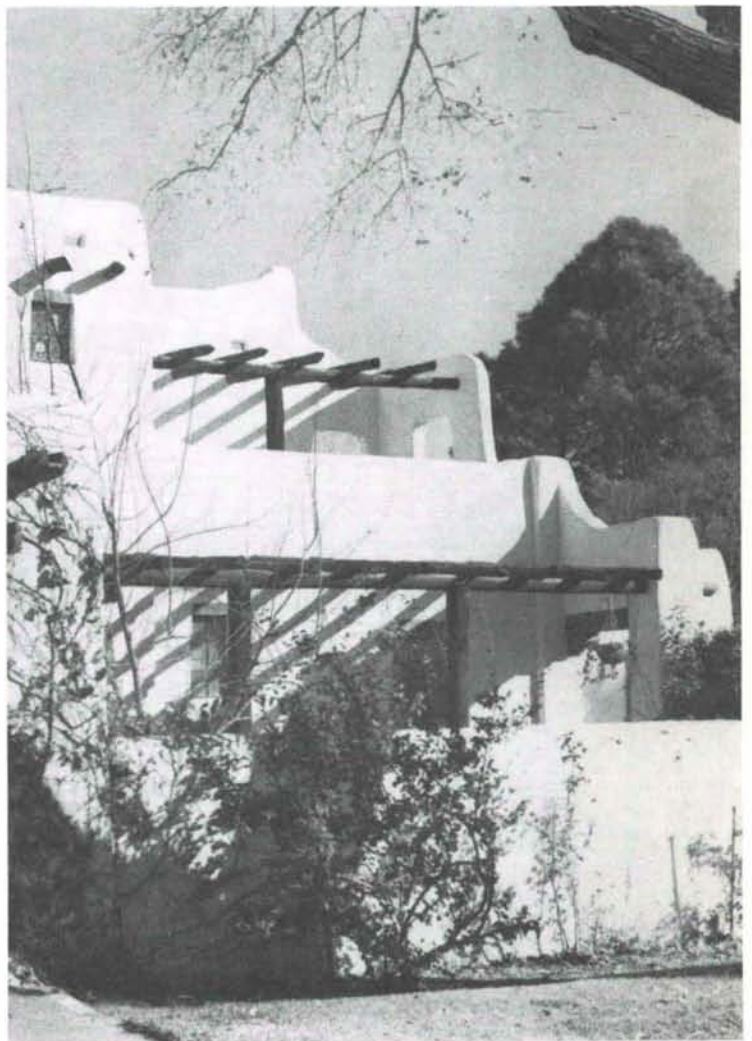
Mr. Brittelle has served the profession in many capacities. He was appointed chairman of the first active Board of Examiners for Architects when the architectural registration laws were passed in 1932. Miles holds New Mexico architectural registration number 2. As president of the New Mexico Chapter, American Institute of Architects in 1959, Miles officiated at the birth of *New Mexico Architecture* magazine. He served as Chairman of the magazine committee from 1960 to 1965 and as advertising director since 1960.



The New Mexico Society of Architects Awards Citations of Honour

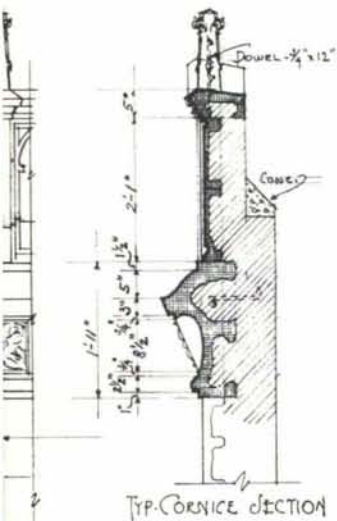
And ▶

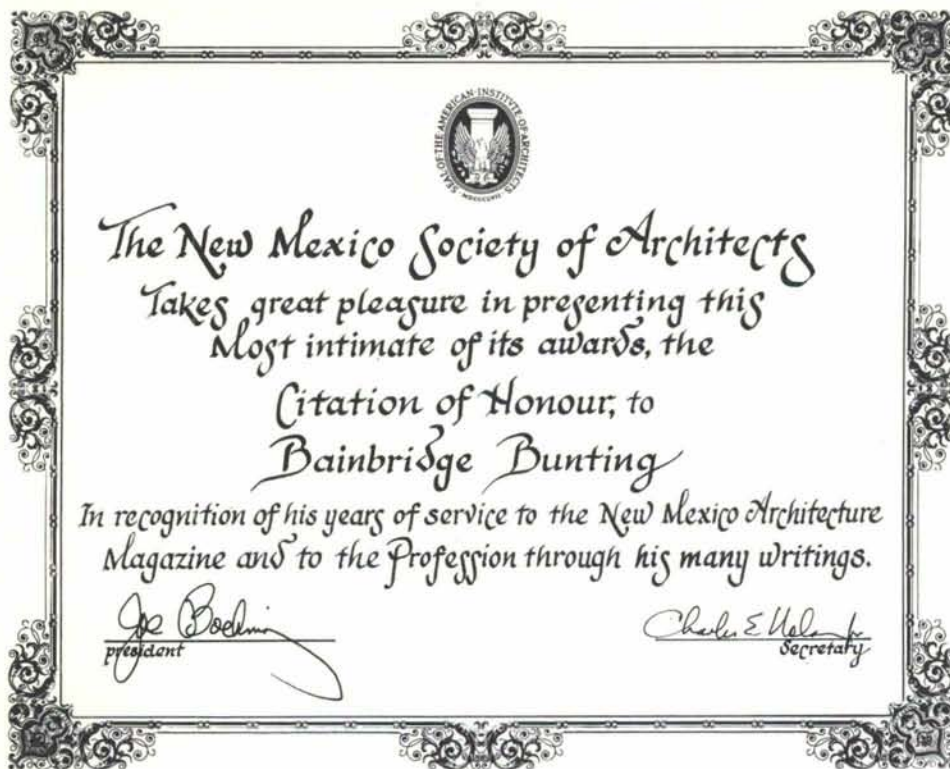
*The President's House,
University of New
Mexico*



*The Occidental Life In-
surance Co., Albuquer-
que, New Mexico.*

Remodeled by Brit-
telle, Wilson and Gin-
ner in 1934 after a dis-
astrous fire. This build-
ing is being recom-
mended for inclusion
in the state list of Cul-
tural Properties. A de-
tail from the working
drawings by Miles
Brittelle.





DR. BAINBRIDGE BUNTING--

UNIVERSITY PROFESSOR, AUTHOR, HISTORIAN, EDITOR

As a teacher he has presented the history of art and architecture to students at the University of New Mexico for over 20 years.

As an author and historian he has written numerous articles for such publications as *Landscape*, *New Mexico Quarterly*, *Journal of Architectural Historians*, and *New Mexico Architecture*. His two books have received wide acclaim; *Taos Adobes* was published by the Fort Burgwin Research Center, Inc. in 1964, and *Houses of Boston's Back Bay* was published by the Belknap Press of the Harvard University Press in 1967.

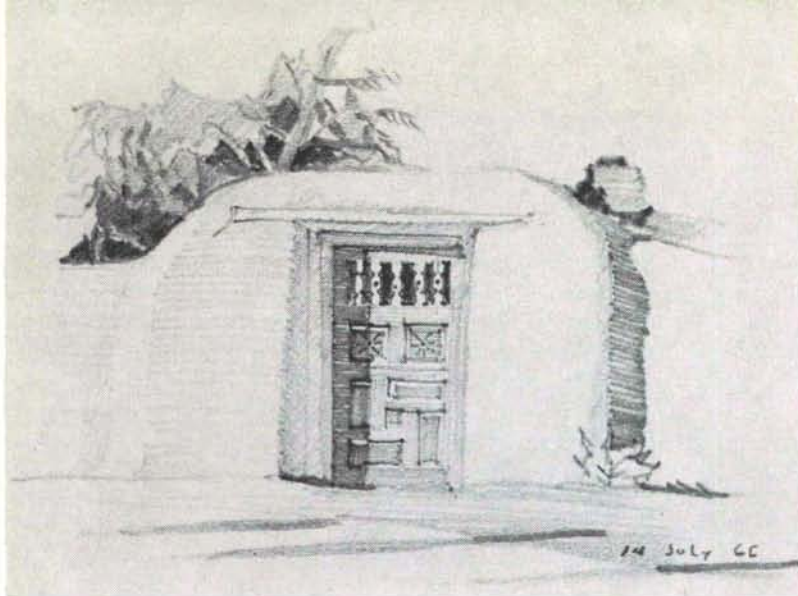
In a letter to Dr. Bunting, Louis Mumford had this to say about *Houses of Boston's Back Bay*, "I can't begin to tell you how delighted I am with your study of Back Bay houses. You have answered most of the questions I find myself asking when I walk about that area; and in doing so you have set an example for other cities, like Washington, where some of the best domestic architecture of the eighties and nineties was done, and is still unrecorded. Both in its general grasp and in its command of details this is a model study; and I only wish that I could turn aside from the book I am writing to do justice to your achievement in a review. But at least I can offer you these hearty personal congratulations."

In addition to his teaching duties at UNM, Dr. Bunting is serving as Survey Director for a

"Survey of Architectural History in Cambridge" for the city of Cambridge, Massachusetts. Two of the projected five volumes have been published. *Report One: East Cambridge*, was published in 1965. The first volume contained a topographical and economic background of Cambridge as well as a general summary of Cambridge architectural development. This background serves as an introduction to the detailed studies of the particular neighborhoods. The balance of volume one reports upon the areas of East Cambridge. *Report Two*: presents the detailed studies of *Mid Cambridge* and was published in 1967. *Report Three: Cambridgeport* is in the printing stage. *Report Four: Old Cambridge* is underway. *Report Five*: will contain the overall evaluation and recommendations.

Dr. Bunting was editor of the art section, *College and Adult Reading List* from 1959-61. This publication was sponsored by the American Council of Teachers of English. And he served as editor of *New Mexico Architecture Magazine* for some 7½ years.

To these two men the staff of New Mexico Architecture owes an unpayable debt. It is with great pride that this issue of NMA announces these two much deserved awards.



OLD SANTA FE

and what to do about it

John W. McHugh AIA

It was a hot summer afternoon on Constitution Plaza in Athens. I was finishing a peaceful ozo after having made a sketch of the Parthenon. When I called to the waiter in English, the man at the next table spoke, saying he was glad to hear another American voice. We fell into conversation, and he asked me where my home was. When I said Santa Fe, he became most enthusiastic and said he thought it was a wonderful place, had visited it many times, and had always wanted to live there. Many other Santa Feans have experienced this same reaction in such foreign cities as New York, Marsailles, Dallas, or Los Angeles. For while Santa Fe belongs to its citizens in a special way, it belongs to all New Mexicans, and to people everywhere. We who live here are custodians of a widely loved city.

Everyone would be sad to see the charm of Santa Fe lost, and many people are working to see that this does not happen. We have state parks in the city, sign control, and architectural design control ordinances—but altogether these don't seem to be enough, for each year we are losing a little ground. In order to know how best to preserve the unique character of Santa Fe we might for a moment consider wherein—besides magnificent scenery, the best all round weather in the nation, its people and its way of life—lies its charm.

But even the scenery, weather, people or life style affect the city and are in turn affected by it. The people who live here do so partly because of the weather and the scenery, and they live the way they do partly because of the kind of a city it is. Our town attracts interesting people because the city itself is interesting. But what makes it so interesting, charming, different? In part it is the pattern of the narrow, twisting streets; the fascinating placing of buildings themselves; it is the garden walls and gates, the cedar post fences, the hedges of purple and white lilacs, or the sprightly gold of forsythia brightening patios; it is wild pussy willow along the river and dappled lights and shad-

ows on the moulded surface of adobe walls; it is the opera, the rodeo, the fiesta, and the Christmas murals in the Plaza. Part of the fun of living here is sitting back watching the firelight dance on viga ceilings, or listening to the thunder of the Santa Fe River in spate after a heavy summer shower. On a winter evening it is delightful to walk up the Alameda and smell the incense from piñon fires glimpsed through lighted windows.

The interiors of Santa Fe, too, are a part of its charm; polished hardwood or brick floors with Navajo or oriental rugs and snowy white walls, rooms that contain elegant antiques or the finest modern furnishings and contemporary paintings with equal grace. There are transitional interiors like the First National Bank, stately ones like Cristo Rey Church, and others completely modern like the Santa Fe Opera. All contribute to the city's famous charm. Santa Fe is the loving handiwork of generations of people. How can we keep all this wonder and make it even more wonderful?

One approach that has received considerable attention is the control of the design of new buildings, and within certain rather small areas of the city this control has been enforced as well as one can expect for such an ordinance. But the ordinance needs improving. It is both too restrictive and not inclusive enough. Some buildings which do violence to the charm and serenity of our streets have been built. The Historic Committee could do nothing else than approve the designs because they met the letter of the ordinance. Then, too, while signs are controlled, there is nothing to govern the design of garden walls, fences, lighting standards, benches, paving, etc. Even sidewalk trash cans can look handsome if they are well designed and if they are appropriate to their settings. So it appears that we need to put someone to work to restudy the ordinance to make it at the same time more flexible and more all-inclusive.

The zoning laws need to be looked at also. Two of the most sketched and photographed streets

in the city are probably Canyon Road and the Camino del Monte Sol. Both streets contain a mixture of living and commercial buildings. Everyone likes these streets, yet our present zoning prohibits the construction of any new such islands of delight. Now, while we do not require people to continue to add to the charm of Santa Fe, we should at least permit them to do so. At the present time, for example, no residential use is allowed in the central part of the city^o—or even in the new Urban Renewal area. But who wants street after street lined with buildings firmly shut in the evening, with no one in any of them? And how are the downtown stores to keep going if they have no customers?

The most rapidly disappearing aspect of Santa Fe's charm is the Medieval street pattern. This is something that is especially ours. Only Santa Fe and Boston have this fascinating variety of twisting streets of varying widths, with the resulting ever-changing vistas. The Vieux Carre hasn't got it; Williamsburg hasn't got it; even San Francisco hasn't got it. To date, we have no legislation to protect this, nor do we encourage private developers or even the City Engineer to respect it. Car parking is another thing. Nothing destroys the peace so much as a sea of asphalt filled with shiny cars in front of buildings or in place of every fourth building. We need public parking lots or even multi-level parking structures. Don't worry—these can be made handsome. Off-street parking requirements make holes in the city. This approach is a certain road to disaster. As more parking places are needed, more buildings are torn down. This leaves the remaining buildings so widely separated by windy parking lots that it becomes impractical to shop on foot. And so still more parking spaces are required! All of this could be eased somewhat by a city-subsidized public transport system which would make it possible for many two-car families to become one-car families, and presto!—less traffic, less noise, fewer traffic signs, fewer accidents, and less need for ever more parking spaces. Instead of writing ordinances which further complicate the problems, we should write a sensitive one which would preserve rather than destroy this particular aspect of the city's charm.

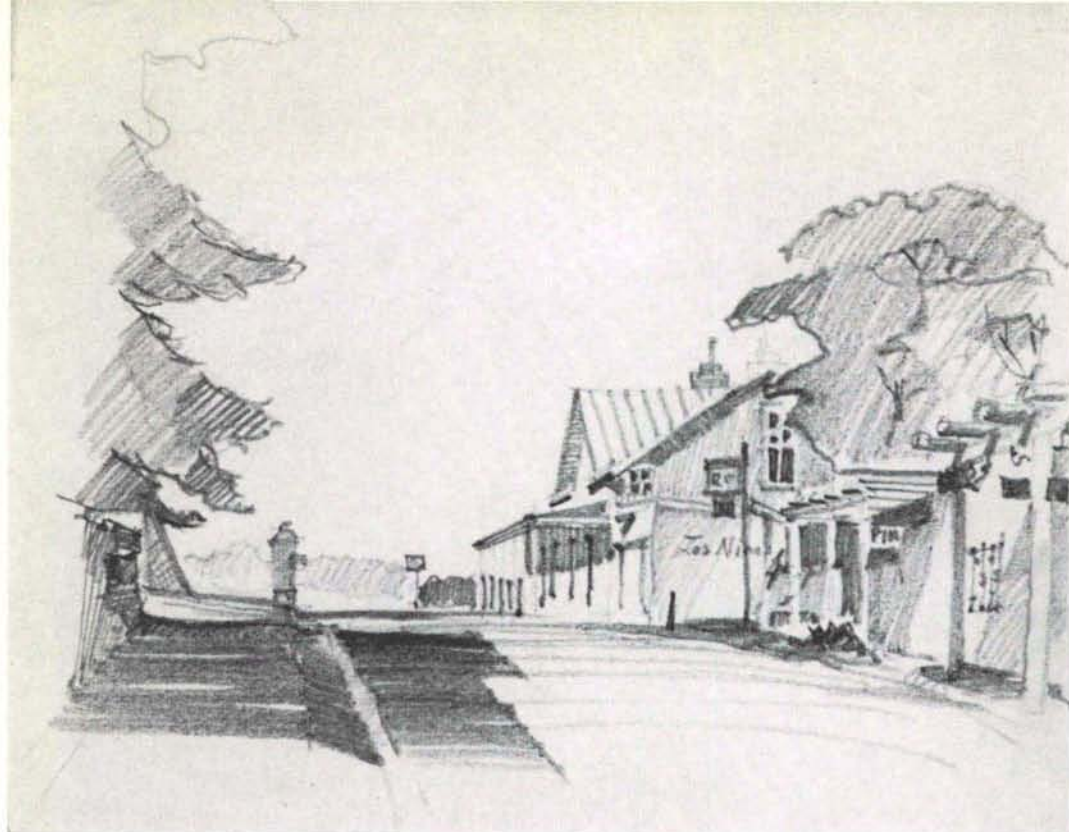
Among the good things in Santa Fe must surely be listed the compounds—intriguing courtyards or patios surrounded in an irregular manner by buildings of varying heights and designs. These exist mainly along the Santa Fe River, all the way from St. Francis Drive to Cristo Rey and on up the canyon. Some compounds, particularly those along West DeVargas and Alto Streets, have been crowded by too much building so that the essential open space has been destroyed, and access has been made difficult or impossible for emergency vehicles such as ambulances or fire trucks. But the idea is still good, and the best of these have an agreeable sunny charm which can be achieved in no other way. They are good places for living and

working. Snug, cozy, they provide a real sense of "home" to the occupants. Companionship is available to all, and children can play there under the eye of one or two mothers while the others are free to go shopping or to do other things—such as practice the piano or write letters. Often there is an artisan or two working in his open garage, studio, or front terrace. The children find great interest watching the woodcarvers, silversmiths, or painters at their work. Zoning ordinances with strict safety regulations must be revised to permit or encourage this sort of planning.

The Historic Ordinance should, I believe, be made more flexible with more emphasis on general architectural character and harmony with the traditional building which constitutes our heritage. The Committee must be given much more discretion, be less bound by rigid rules. It is apparently not possible to compose a system of rules (mostly "don'ts") that will apply equally well to all situations and guarantee that the new buildings will harmonize with the city. It would be better to give the Committee well studied general guidelines and certain broad limitations and restrictions under which it would have the freedom to consider each proposal on its own merits. But there must be an excellent committee composed of sensitive and intelligent persons. To make sure that we will have such a group appointed for their ability rather than for political reasons, the membership of the committee must be spelled out in the revised statute. If we were clever enough write an excellent ordinance, it should, perhaps, then be extended city wide. With a sensitive group giving due consideration to planning needs, to the economics of today's construction, and to the surroundings of each new structure (including such site considerations as garden or parking lot walls, planting and street furniture) we could build a city as harmonious and as multi-faceted as Venice!

Consider for a moment what it would be like if every building in Santa Fe were a perfect sample of Pueblo or Territorial design, and if they were all lined up, equally spaced, along wide straight streets filled with fast-moving cars. Surely every bit of the charm of Santa Fe would be lost. Yet, under our present laws, this is the direction in which we are heading. While one sees that the architecture counts, we must realize that planning is much more important.

And people are much more important than planning. In Santa Fe the ordinary citizen can mix with the most important, travelled, interesting, or wealthiest people; while in other cities he would not even meet them. We have a higher percentage of wealthy people than most cities—but you'd never know it. They dress like the rest of us, their cars and their houses, though they may be bigger, look about like everybody else's. It's just not the thing to do in Santa Fe to flaunt your wealth. I have never known a city which places so little importance



Sketches by
John W. McHugh, AIA

on material things. Here one is judged, not by what he has, but by what he can contribute; not by who he is, but by what he is. Not all true Santa Feans are born in Santa Fe. They may be born anywhere in the world, but eventually find Santa Fe. The charm of our city is many things; but mainly it is spirit. This spirit is a strong, infinitely valuable, yet fragile thing. I don't know why I feel this way, but I'm sure that it could not exist in a uniformly designed, straight-streeted, anonymous city. Since first I saw it, I've been deeply in love with Santa

Fe. I'm committed to it, I've spent half my life here. I'd like to be able to give to my children a city which will be even more beautiful and full of wonder than the Santa Fe I took to my heart nearly thirty years ago. We can do this if we can identify those forces or things which make Santa Fe great, and then support and encourage them.

—John McHugh

**On January 14th the Santa Fe City Council passed its first ordinance of 1970. This ordinance allows for the construction of apartment complexes in the central city core.*



DEATH COMES TO W. MILES BRITTELLE, SR.

As this issue of *New Mexico Architecture* goes to press, we learned of the passing of W. Miles Brittelles, Sr. Miles was born in Imperial, Nebraska on April 13, 1894. He died during the late evening hours of January 7, 1970. He had been ill for the past several months. We are once again reminded of the fragility of us all.

The New Mexico Society of Architects "Citation of Honour," as announced on Page 12 of this magazine, was to have been a surprise to Miles. The award will be presented to Mrs. Mildred Brittelles with the sincere and heartfelt appreciation that is due to "Brit" and to his devoted wife Mildred.

The Editors and Staff of *New Mexico Architecture* know full well that this magazine exists because of W. Miles Brittelles, Sr.



Architect: Jess Holmes

**Engineer: Howard S.
Cottrell**

Project background: The Wilson Park pool, designed as a neighborhood swimming facility, was one of five such projects approved by Albuquerque voters in 1968. The facilities are intended primarily for instructional purposes with limited time allowance for recreational swimming. Bathhouse facilities are minimal, as most swimmers will come dressed for swimming. There are no diving facilities provided as the pool's depth ranges only from three to five feet.

Project solution: The bathhouse circulation pattern was kept simple and straightforward to lessen confusion among the young children. The design is such to keep vandalism at a minimum. The bathhouse is lighted naturally by top light through clerestories over the dressing benches and ventilated

WILSON PARK SWIMMING POOL

for the City of Albuquerque

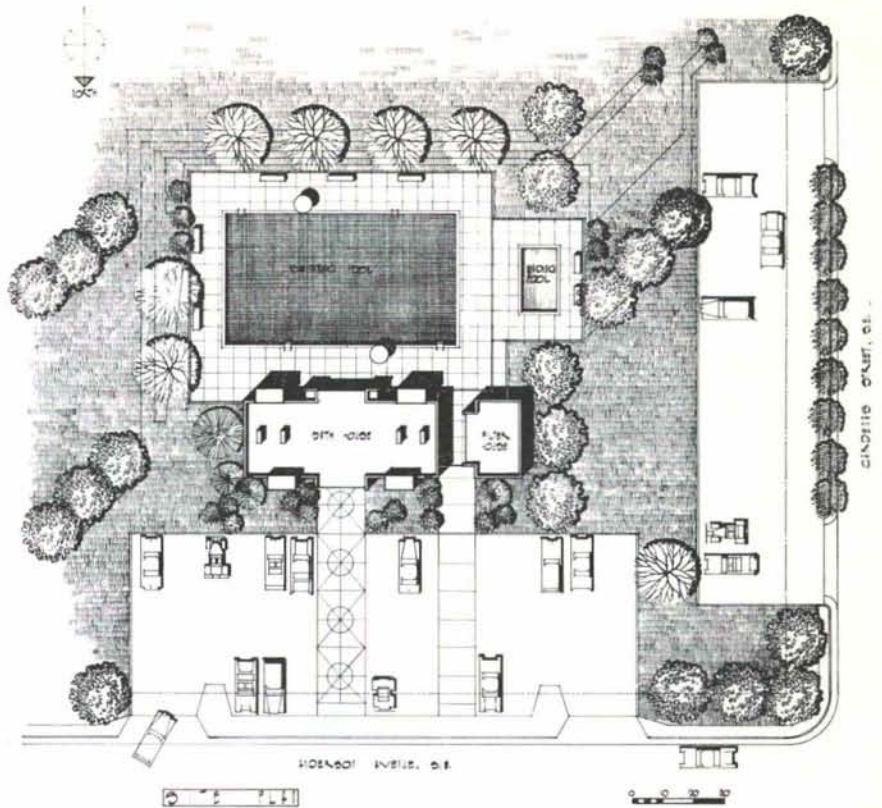


skylights over the showers and toilets.

Graphics are used in lieu of signs to indicate boys' and girls' shower areas. The colors for the graphics, i.e., "sex symbols," were so chosen that girls identify not only with the symbol, but with the lavender color; boys, with a pale blue. These colors are utilized again as accent colors on the interior to re-emphasize the relationship.

The project, as conceived, was an attempt to create a total atmosphere of warmth, cheerfulness, light and spaciousness, qualities that often fail to accompany swimming pool environments.

Total Project Cost: \$87,000 (not including architectural fees).



ARCHITECTURAL SPECIALTIES DIVISION

J. C. BALDRIDGE LUMBER CO.

Agents for

Walter Balfour & Co., Inc.

ROLLING STEEL DOORS

and

GRILLES

with

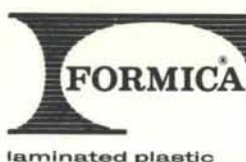
Installation Available

write or call

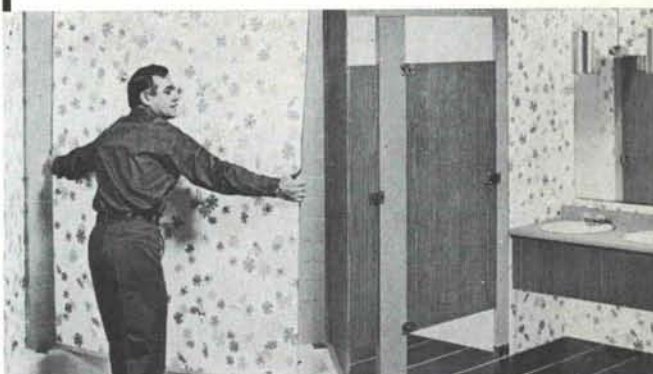
Lloyd Sallee
P. O. Box 1396

Bob Park
Tel. 243-4546

Albuquerque, New Mexico 87103



PANEL SYSTEM 202 AND TOILET COMPARTMENTS



FORMICA® brand Panel System 202 goes right over almost any structurally sound wall . . . no tearing down . . . goes up in a day or less! Perfect anywhere moisture is a problem. Formica Brand Laminated Plastic is the ideal surfacing material for toilet compartments and other restroom partitions, for the same reason it serves so handsomely on surfaces in other parts of a building.

FORMICA DISTRIBUTOR



FORMICA REPRESENTATIVE
RICHARD P. KASSA
268-4589

Albuquerque

BLUEPRINT
COMPANY

ALBUQUERQUE'S OLDEST BLUE
PRINT COMPANY — SINCE 1928

BLUE PRINTS
BLACK & WHITE PRINTS
PHOTO COPIES
CAMERA
REPRODUCTIONS
MULTILITH PRINTING

Exclusive Dealers For

KEUFFEL & ESSER



514-4th N.W.

Phone
243-3521

ALBUQUERQUE,
NEW MEXICO

ALBUQUERQUE TESTING LABORATORY

Sub-soil Investigations
For Structural and Dam Foundations

**Two Drills and Crews now
available for Prompt Service**

Laboratory Analysis and
Evaluation of Construction Materials

**All work done under the supervision
of Registered Professional Engineers**

532 Jefferson St. N.E. — P. O. Box 4101
Phone AL 5-8916 Albuquerque
Phone AL 5-1322 New Mexico

KINNEY BRICK COMPANY INC.

Manufacturers of:

- Common Brick
- Patio Brick
- Face Brick
- Roman Brick
- Norman Brick
- "SCR" Brick

Distributors for:

- Summit Brick Co.
- Acme Brick Co.
- Major Brick Co.
- Eureka Brick Co.
- Texas Clay Products
- • • • •

Samples and information upon request

Visit Our Office & Showrooms at Plant
5 miles South just off of Second Street

ALBUQUERQUE, NEW MEXICO

Phone 877-4550

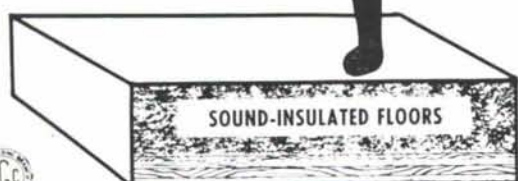
P. O. Box 1804, 87103

MAN, TAKE IT FROM A
"CAT" WHO GETS 'ROUND

by **Elastizell**

PURRRR
STEP
ON IT DAD! PERFECT

The system has a sound rating of 50 STC, and up to 56 F-STC can be realized by combining it with a resilient channel mounted ceiling. INR of plus 20 and more are experienced with pad and carpet covering.



The one-day application of an ELASTIZELL insulated floor begins with standard framing covered with 5/8-inch thickness of fir plywood or 1 x 6 subflooring as shown above.

FOR COMPLETE INFORMATION
Call or Write

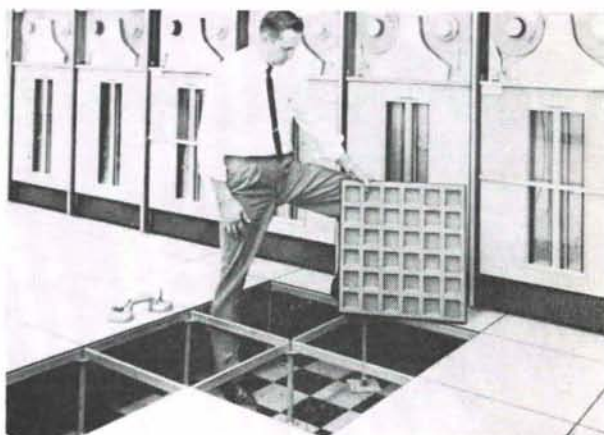


2906 Broadway NE-87107 (505) 345-3621

THE

INFINITE ACCESS FLOOR

The sensible answer to the problem of under-floor accessibility for cables—heating, cooling, conduit, piping, conveyors, etc.



The Tate Floor System, as installed by New Mexico Marble & Tile Co. offers the advantages of: The high strength of steel, interchangeable floor panels, fire resistance, low cost, lateral stability, permanent floor level, cut-out flexibility, dimensional stability, unaffected by temperature or humidity, owners choice of floor covering.

Ask us for details of this
revolutionary floor system.

**NEW MEXICO
MARBLE AND TILE CO.**
414 Second St., S. W. Albuquerque, N. M.
P. O. Box 834 • Phone 243-5541

LATH and PLASTER SUPPLY CO., Inc.

116 Industrial Ave. N.E.

Phone (505) 344-2303

ALBUQUERQUE, NEW MEXICO 87107

DISTRIBUTORS FOR:

- Keene Penn Metal Structural Steel
- Dur-O-Wall Masonry Reinforcing
- Kewanee Doors and Frames
- Milcor Access Doors
- Keystone Steel & Wire
- Plaster Weld & Weld Crete

Complete Line of Lathing and Plastering Systems, Drywall Systems,
Industrial Plasters and Masonry Products.

For the best possible prices and services, CALL US!

ALWAYS SPECIFY

STRESSCRETE SLABS

PERFECT FOR . . .

- APARTMENT
 - SCHOOL
 - MOTEL
- CONSTRUCTION**

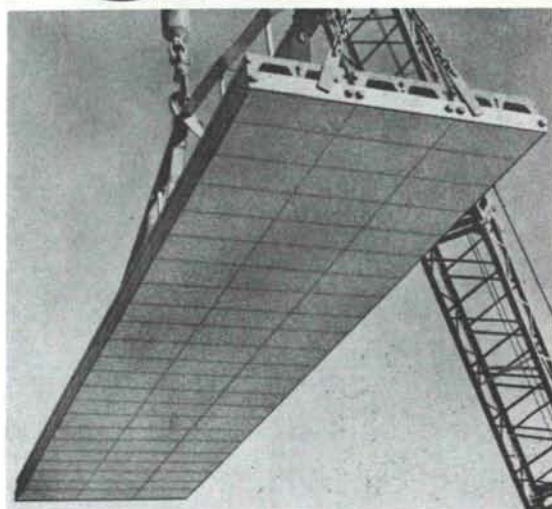
Fire-safe, Low-Maintenance Roofs
and Floors by . . .

THE



BUILDING PRODUCTS CO.

P. O. BOX 9977 • EL PASO, TEXAS • PHONE 772-1451



new mexico architecture

nma

Published bi-monthly, by the New Mexico Society of Architects American Institute of Architects, a non-profit organization, Box 7415, Albuquerque, N. M. 87104

Editorial Correspondence: All correspondence should be addressed to John P. Conron, P. O. Box 935, Santa Fe, New Mexico 87501.

Editorial Policy: Opinions expressed in all signed articles are those of the author and do not necessarily represent the official position of the New Mexico Society of Architects, A.I.A.

No responsibility will be assumed by the editor or publishing organization for unsolicited contributions. Return postage should accompany all unsolicited manuscripts.

Subscriptions: Write Circulation New Mexico Architecture, Box 7415, Albuquerque, N. M. 87104. Single copy 50c. Yearly subscription \$2.50.

Change of address: Notifications should be sent to New Mexico Architecture, Box 7415, Albuquerque, N. M. 87104 at least 45 days prior to effective date. Please send both old and new addresses.

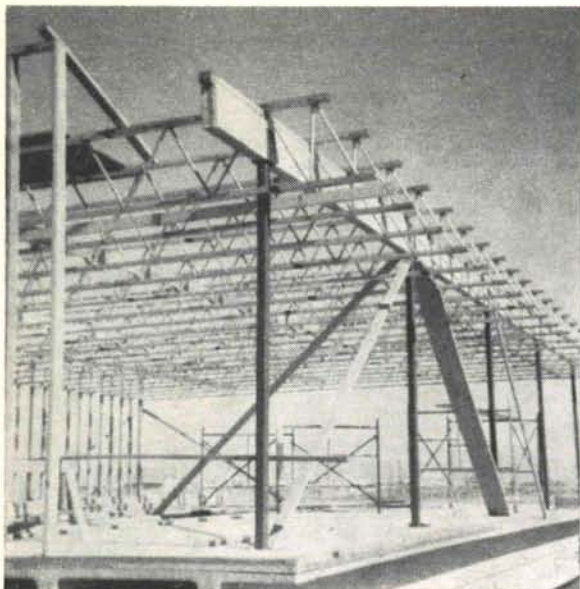
Advertising: Requests for rates and information relating to advertising should be addressed to New Mexico Architecture, Box 7415, Albuquerque, N. M. 87104, or Rob't. G. Mallory, 115 Amherst Dr. S. E., Albuquerque, N. M. 87106.

INDEX TO FIRMS

Cooperating in the public relation program of the NMA magazine, making possible its publication and the page upon which their message may be found.

Albuquerque Blueprint Company 20
Albuquerque Gravel Products Company 4

Albuquerque Lumber Company	7
Albuquerque Testing Laboratory	20
Atlas Building Products Co.	22
Baldrige Lumber Company	20
Builders' Block & Stone Co., Inc.	2
Design Interiors, Inc.	6
Featherlite Tile Company	8
Frontier Roofing Co.	5
Hanley Paint Mfg. Co., Inc.	4
Hunter-Hayes Elevator Co.	7
Hydro Conduit Corp.	24
Jaynes Corporation	21
Kinney Brick Co., Inc.	20
Landes, Zachary and Peterson Co.	6
Lath and Plaster Supply Co., Inc.	21
Lumber Merchandisers Association	6
McGill, George B.	23
McMurtry Paint and Glass	7
New Mexico Marble and Tile Co.	21
Prestressed Concrete Products, Inc.	8
Public Service Co. of New Mexico	2
Rio Grande Steel Co.	5
Southern Union Gas Co.	23
Southwestern Vermiculite Co.	4
Stryco Sales, Inc.	20
University Book Store	5
Wellborn Home Decorating Center	8



"I have used many types of structural materials and I consider TRUS JOIST one of the best time savers by ease of installation, light in weight and a very well engineered product."

This is Lloyd E. Gibson, contractor, speaking of the advantages of the TRUS JOIST system. He's a man who spends a great deal of time on the job site supervising work. He knows construction. He knows costs. He knows TRUS JOIST.

Building:
Albuquerque Metropolitan Arroyo Flood
Control Authority

Architect:
George Wynn
Contractor:
Lloyd E. Gibson



George B. McGill

7100 Constitution Avenue N.E.
Albuquerque 505/256-2058

The Staff of
New Mexico Architecture
wishes each of you a



FLUFFY DRYING?

if you want the job done right
...do it with gas

SOUTHERN UNION  **GAS** COMPANY

New Mexico architecture
LIBRARIES - UNIVERSITY OF
NEW MEXICO
Received on: 04-20-90

John Gaw Meem, FAIA
Box 1924
Santa Fe, N.M. 87501

Bulk Rate
U. S. Postage
PAID
Roswell, N. M.
Permit No. 47

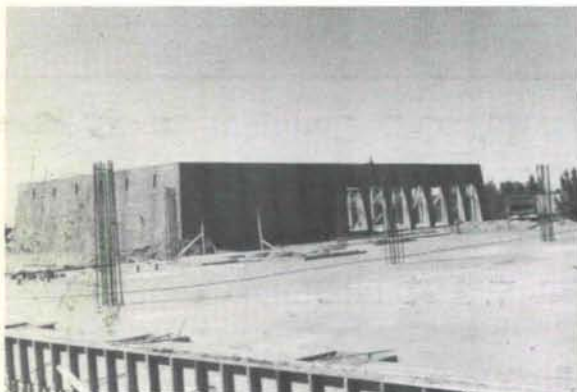
PERMANENCE PERSONIFIED



ARCHITECT — PHILLIPPE REGISTER, SANTA FE
CONTRACTOR — WHITTAKER CORP. ALBUQUERQUE

THE IMAGINATIVE USE
OF CONCRETE TO
CREATE BUILDINGS
WITH LONGER
LIFE AND BEAUTY.

A NEW BUILDING FOR THE
COLLEGE OF SANTA FE WHERE
A VARIETY OF USES OF
CONCRETE WERE INCORPOR-
ATED. SINGLE TEE PRESTRESSED
CONCRETE ROOF. PRECAST
CONCRETE WALL PANELS,
ENTRANCE VAULTS AND
PLANTER BOXES, ALL
FABRICATED BY
HYDRO CONDUIT CORPORATION.



HYDRO CONDUIT CORPORATION

2800 SECOND ST., SW • ALBUQUERQUE, NEW MEXICO 87103