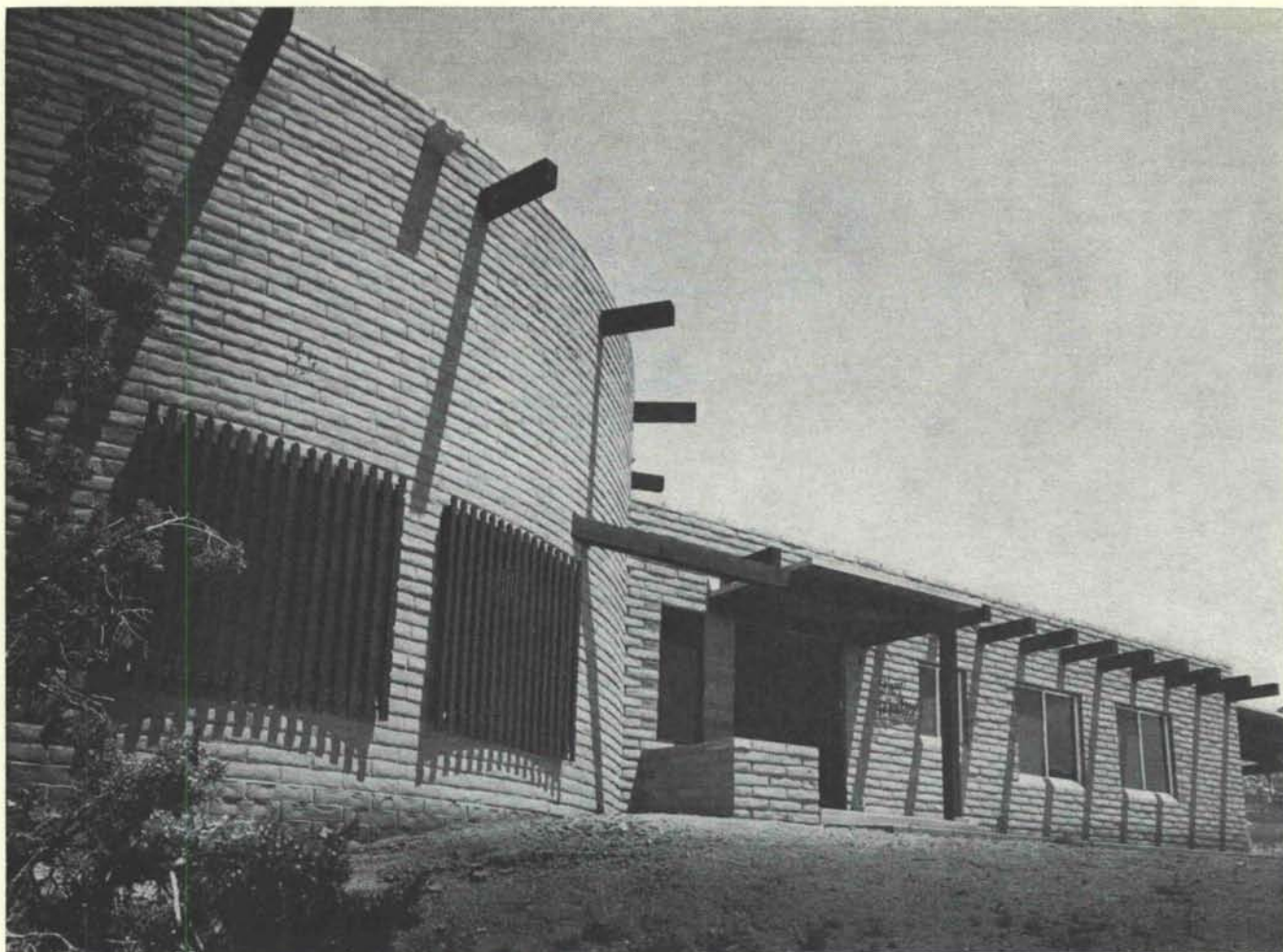


678

new mexico architecture



july-august 1969 50¢



Residence of Dr. & Mrs. Steven H. Feagler, (in Four Hills) Albuquerque, N. M.

SLUMP BLOCK

Versatile in its use • Highlighted thereby creating soft shadows • Needs no finish
Blends in beautifully with Southwestern architecture.

SLUMP BLOCK masonry units "only by Crego" are double faced with hollow cores
Manufactured in three colors

Masonry units manufactured and furnished by

CREGO BLOCK CO., INC.

6026 Second St., N.W.

Phone (505) 344-3475

Albuquerque, N. M. 87107

nma

vol. 11 • nos. 7 and 8 • july - aug. 1969 • new mexico architecture

La Luz, Albuquerque, N. M. 7
—Antoine Predock

J. J. Dolan House, Lincoln, N. M. 17
—R. Thomas Slates

New Architectural Scholarship
at the UNM 20

Index to Advertisers 23

(Cover—La Luz, Albuquerque, by Jerry Goffe)

— Official Publication of the New Mexico Society of Architects, A. I. A. —

Society Officers

President—Beryl Durham
Vice President—Joe Boehning
Secretary-Treasurer—Earl P. Wood
Director—Van Dorn Hooker
Director—John Reed
Director—Craig Protz
Director—Will Harris
Director—Richard S. Clark
Director—Charles Lugton
Director—Kenneth S. Clark, F.A.I.A.

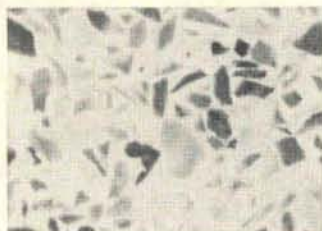
Commission for NMA

John P. Conron—Editor
Bainbridge Bunting—Editorial Consultant
W. M. Brittelle, Sr.) —Advertising
Robert G. Mallory)
Louis Walker
Jess Holmes, Jr.
Craig Protz



CERAMIC
TILE

CONVEN-
TIONAL
TERRAZZO



GENUINE
MARBLE

Where Craftsmanship and Experience
Combine To Produce More Beautiful Buildings

**NEW MEXICO
MARBLE AND TILE CO.**
414 Second St., S. W. Albuquerque, N. M.
P. O. Box 834 • Phone 243-5541

ARCHITECTURAL SPECIALTIES
Division
J. C. BALDIDGE LUMBER CO.

Agents For

-- KOPPERS --

Architectural Construction Materials
"Unit" Engineered Laminated Structures

-- KOPPERS --

Southern Pine Unit Decks
Prefinished "Decorator" Colors Available

write or call

Lloyd Sallee Bob Park
P. O. Box 1396 Tel. 243-4546
Albuquerque, New Mexico 87103

Albuquerque
**BLUEPRINT
COMPANY**

ALBUQUERQUE'S OLDEST BLUE
PRINT COMPANY — SINCE 1928

**BLUE PRINTS
BLACK & WHITE PRINTS
PHOTO COPIES
CAMERA
REPRODUCTIONS
MULTILITH PRINTING**

Exclusive Dealers For

KEUFFEL & ESSER

ALBUQUERQUE,
NEW MEXICO

514-4th N.W.

**Phone
243-3521**

LATH and PLASTER SUPPLY CO., Inc.

116 Industrial Ave. N.E.

Phone (505) 344-2303

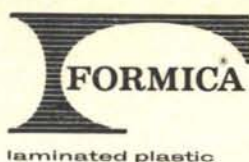
ALBUQUERQUE, NEW MEXICO 87107

DISTRIBUTORS FOR:

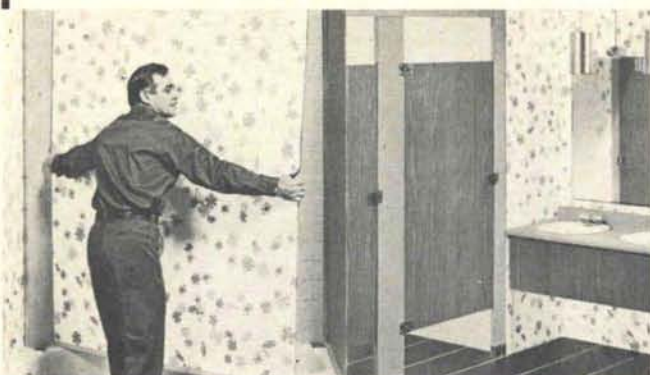
- Keene Penn Metal Structural Steel
- Dur-O-Wall Masonry Reinforcing
- Kewanee Doors and Frames
- Milcor Access Doors
- Keystone Steel & Wire
- Plaster Weld & Weld Crete

Complete Line of Lathing and Plastering Systems, Drywall Systems,
Industrial Plasters and Masonry Products.

For the best possible prices and services, CALL US!



**PANEL SYSTEM
202
AND TOILET
COMPARTMENTS**



FORMICA® brand Panel System 202 goes right over almost any structurally sound wall . . . no tearing down . . . goes up in a day or less! Perfect anywhere moisture is a problem. Formica Brand Laminated Plastic is the ideal surfacing material for toilet compartments and other restroom partitions, for the same reason it serves so handsomely on surfaces in other parts of a building.

FORMICA DISTRIBUTOR



**FORMICA REPRESENTATIVE
RICHARD P. KASSA
268-4589**

Total Concept

the
Sears approach
to the design and
furnishing of
contract interiors

Through our Contract Division, the vast merchandising resources of Sears are available to you, together with the services of our national design staff. Offices, dormitories, motels, restaurants, nursing homes...regardless of the type of interior your client wants, or the size of his budget, Sears Contract Division can handle the job best. Turn your ideas into reality...call your Sears Contract Sales representative today!

Sears

**CONTRACT SALES DIVISION
SEARS, ROEBUCK AND CO.
600 Coronado Center
Albuquerque, N.M. 87110
296-1511 Ext. 320**

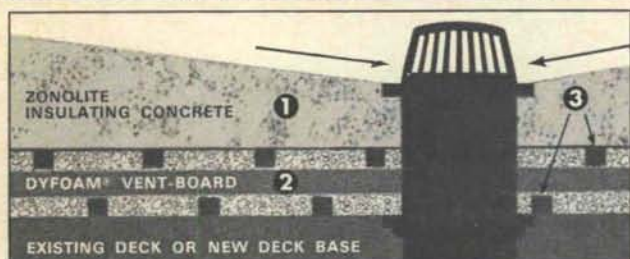


AUTOMATIC COOKING?

if you want the job done right
...do it with gas

SOUTHERN UNION  GAS COMPANY

New double-insulated Dyzone roof deck is self-venting



- 1** On top, a layer of seamless, permanent Zonolite lightweight insulating concrete that can be sloped to drain easily and economically, so leak-making puddles and ponds don't stay on the deck.
- 2** Below, Dyfoam Ventboard. It's composed of Dyfoam expanded polystyrene boards sandwiched between laminating material. The insulating concrete combined with Dyfoam Ventboard gives you economical U values down to .03.
- 3** Vents are built right into the Dyfoam Vent-board. Water vapor passes through the laminating material into the vents, and is channeled out to the edges of the roof.

No joints, no tape, no adhesives, no vapor barrier are needed with the new Dyzone roof deck. A thin slurry of Zonolite insulating concrete serves as the bonding agent between deck and structure.

Zonolite roof decks can only be applied by applicators we have trained and approved. Upon completion, the decks are certified to meet specifications.

ZONOLITE GRACE		MAIL THIS: Zonolite Div., W. R. Grace & Co. Dept. HM-07 c/o Southwest Vermiculite Co. 5119 Edith Blvd. Albuquerque, N. M. 87107
Gentlemen: Economical Insulation down to U .03! Certified! Versatile! No messing around with joints, tape, glue or vapor barriers! Please send me complete information and specifications on DYZONE roof decks right away.		
NAME _____		
TITLE _____		
FIRM _____		
ADDRESS _____		
CITY _____	STATE _____	ZIP _____

FROM CONCEPT TO COMPLETION



Exclusive distributors for TAYLOR

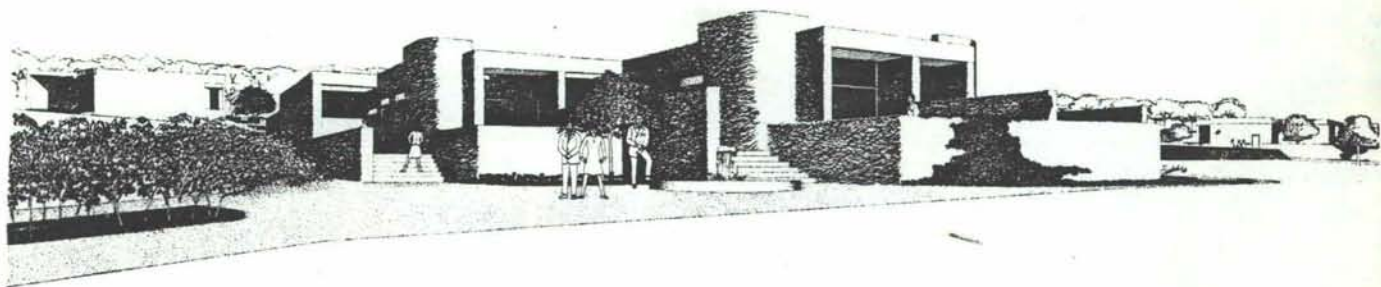
Consultation Planning Design Layout

Criteria, skill, artistry and experience are fused to produce laboratory furniture meeting the most exacting requirements of contemporary science educators and architects. Units immediately available and within the reach of any school or institutional budget.

Architects use our design consultation services for:
 Science Labs / Offices / Artrooms / Dormitories /
 Libraries / Auditorium Seating / Home Economics
 Labs / Gymnasiums

UNIVERSITY BOOK STORE ALLIED SUPPLY CO.

2122 Central, SE
 Phone 243-1776
 Albuquerque, N. M.



La Luz

Albuquerque, New Mexico

ANTOINE PREDOCK, ARCHITECT



Fig. 2

The concept of La Luz involves a basic attitude toward the land: An urban environment and large open natural areas should exist together—especially in New Mexico. Existing natural patterns should be recognized and reinforced rather than eliminated. The delicate balance of plant and wild life need not be destroyed by development.

In acquiring the 500 acres for the La Luz project, the owners sought a large unspoiled natural area with convenient access to Albuquerque (fig. 2). The chosen site is northwest of downtown Albuquerque, with a mile of Rio Grande frontage, 1½ miles of State Highway 448 frontage and quick access to Interstate 40. Great extremes in topography and plant and animal life exist on the site. The flood plain bosque, due to the absence of ditch roads, has not fallen prey to litter and general despoilation as have many other stretches of bosque around Albuquerque (fig. 3). Migratory wildfowl, muskrat and beaver abound in the lowland zone along with cattails, giant cottonwoods and the many other familiar river plants.

Abutting and contrasting this lush greenbelt is the harsh semi-arid mesa, climbing gradually to a height of 100 feet above the river at the southwest corner of the property. The grey-greens of chamizo, rice grass, rabbit brush, and smoke bush of the mesa effectively compliment the almost alien greenery of the bosque zone.

The higher ground of the La Luz site commands an incredible panorama of the distant Jemez and Sangre de Cristo Mountains to the north, the nearer west face of the Sandias and the Manzanos disappearing to the south. The green line of the Rio Grande Valley undulates through these powerful landforms. Spectacular views of the city add to the panorama, especially at night with the black void of the undeveloped mesa and river valley forming



Fig. 3



Fig. 4

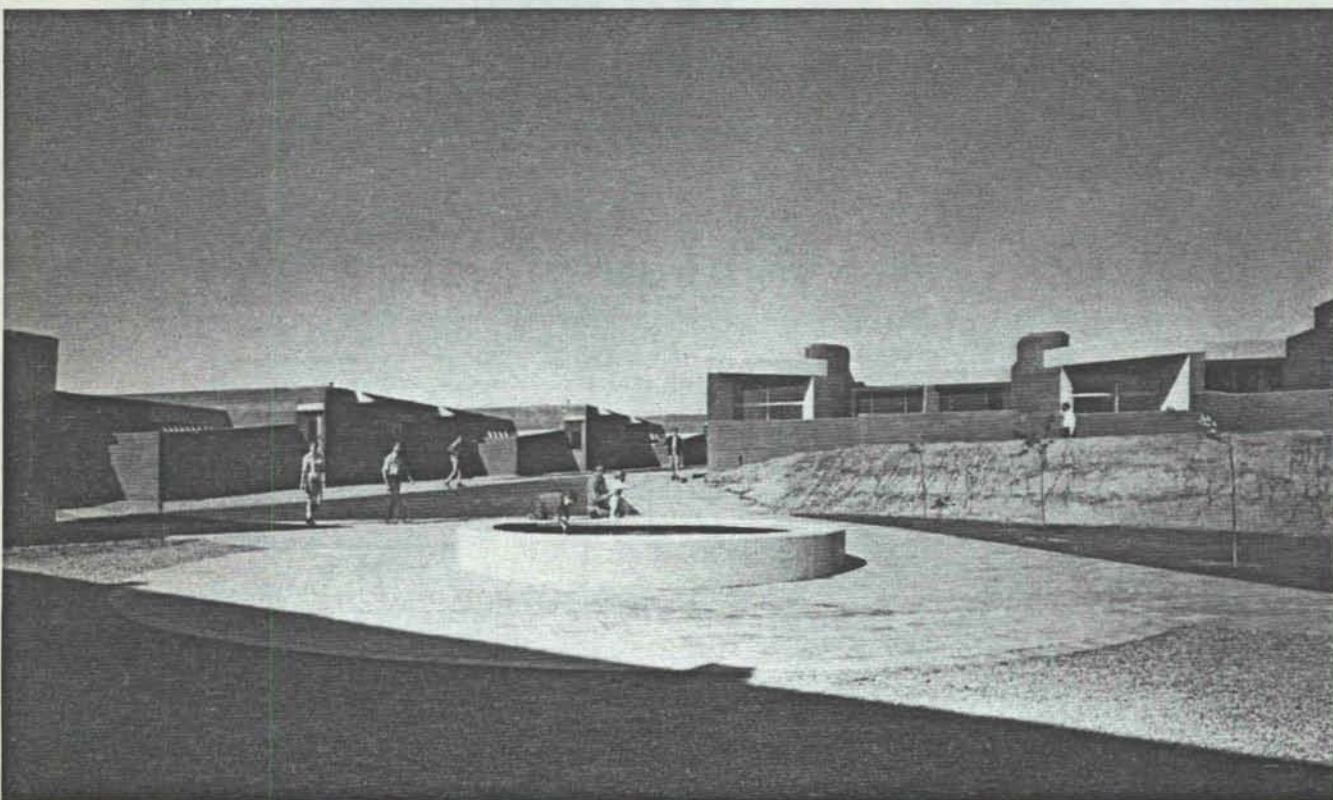


Fig. 5

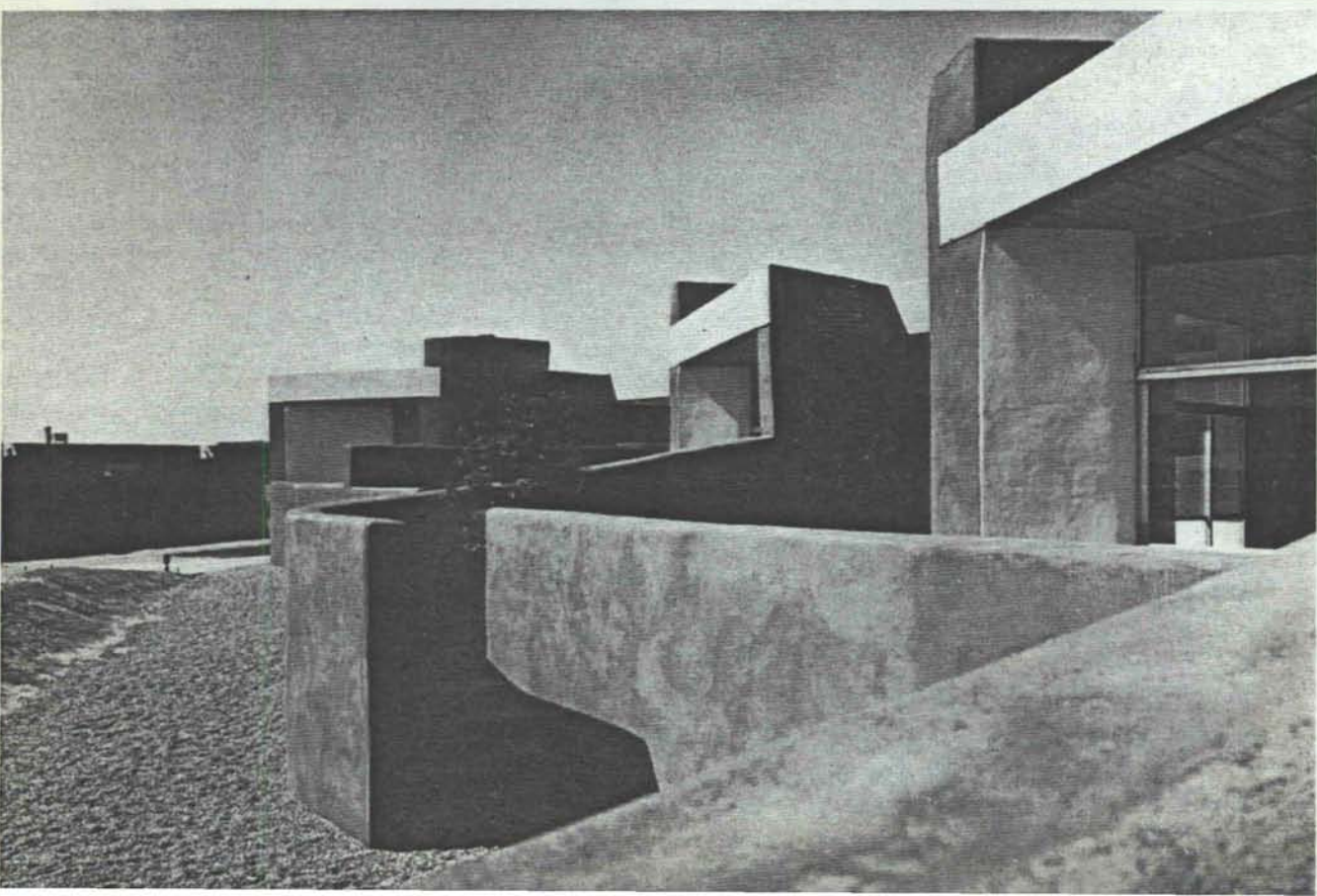


Fig. 6

the foreground for the brilliant lighting display of the city.

Thinking of the inevitable West Side expansion to the Rio Puerco, it appears obvious that one day the La Luz site will lie geographically in the center of Albuquerque. The resultant land values and uncontrolled west side growth could ravage this beautiful but vulnerable site unless the entire acreage were committed to a plan. To avoid the proliferation of Polynesian-Swiss chalet suburbia, the decision was made immediately to build a community of mixed uses with controlled planning, rather than simply wholesale lots with token architectural controls.

Visually, the essence of the site seemed to lie in its open sweep to the river with the sense of being part of a great valley. Ecologically, the river valley seemed to be most vulnerable to development—the aquifer resources and their recharge zones must be protected. Viewed in the context of probable leapfrog urbanization of the West Side, provision for a significant large open space on the site seemed necessary. With vehicular access already present at the high western edge of the site at a substantial distance from the river, and in the light of the three aforementioned considerations, the structure of the development plan was evolved.

Development will occur in concentrations on the higher ground of the site (*fig. 4*). Concentrations of connected buildings will avoid the mistake of building a patchwork-gridiron of houses at a density where neither buildings nor landscape have visual dominance. Rather, concentrated buildings will recognize particular landscape and view nuances and will generate a strong man-made landscape “event” analogous to a butte or mountain. Concentrated development can then economically justify the provision of large natural open spaces on the site, which will occupy approximately 200 of the 500-acre tract. Through the close yet private placement of housing units sharing smaller enclaves of open space in the form of plazas and patios, a greater sense of community will be evoked than generally exists in suburbia (*fig. 5*). The large central open area between the buildings and the river will remain natural and will interconnect with the smaller open areas enclosed within the building cluster. A curvilinear pedestrian route separated from vehicular traffic will connect plaza and courtyard spaces to form a sequence of “places.” This pedestrian system will also connect with a major existing arroyo which runs west to east from the high ground west of the project. Landscaping and paths will reinforce this natural drainage pattern to create a meandering pedestrian path to the Bosque. The Bosque will be maintained as a wild life area with occasional trails and clearings for hiking and picnicking.

Street alignments will follow the topography in gently curving loops. The depth of street intrusions eastward from State Highway 448 will be

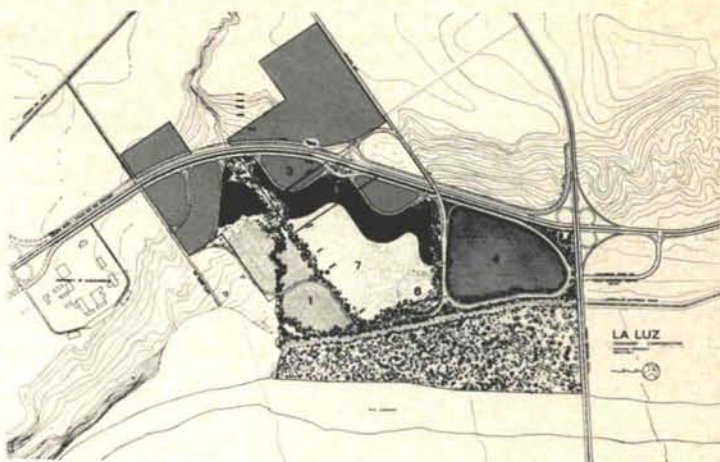


Fig. 7

Development plan legend

1. Houses on large lots (*landscape dominates*)
2. Medium density connected housing (*black band*)
3. Mixed commercial uses and high density housing
4. Regional shopping center
5. Community recreation
6. Elementary school
7. Natural open space
8. Undeveloped bosque

Fig. 8

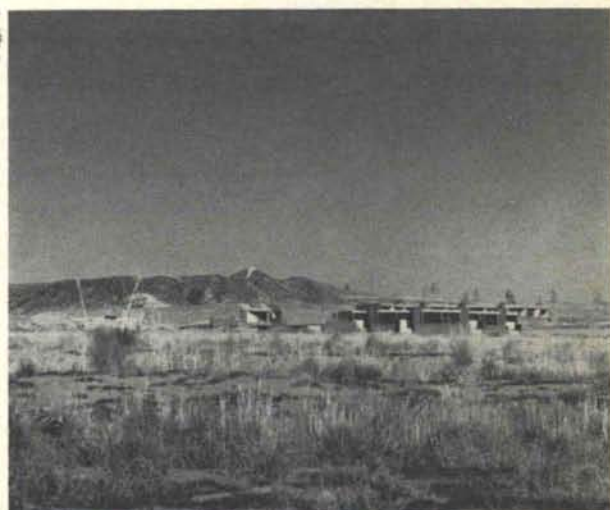


Fig. 9



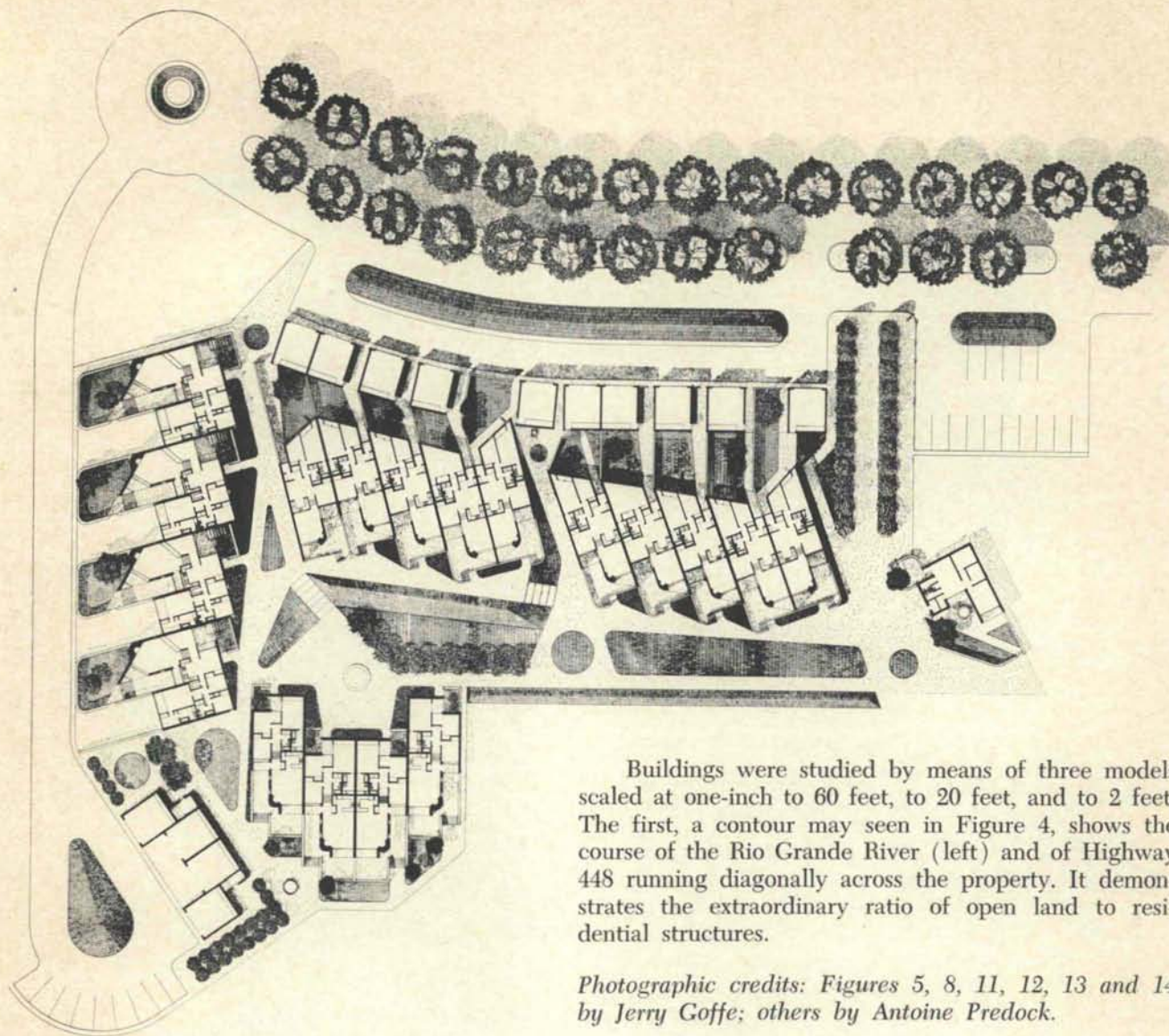


Fig. 10

Buildings were studied by means of three models scaled at one-inch to 60 feet, to 20 feet, and to 2 feet. The first, a contour map may be seen in Figure 4, shows the course of the Rio Grande River (left) and of Highway 448 running diagonally across the property. It demonstrates the extraordinary ratio of open land to residential structures.

Photographic credits: Figures 5, 8, 11, 12, 13 and 14 by Jerry Goffe; others by Antoine Predock.

Fig. 11

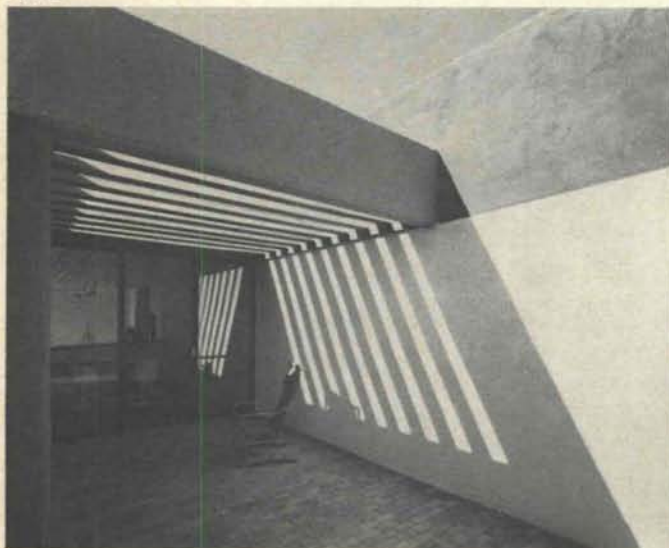


Fig. 12



minimized. The clustered housing will be served from the eastern edge of the vehicular loop system, while contained within the loops will be apartments and commercial enclaves relating to the highway scale of the State Highway 448 "strip" (fig. 7). While an exciting mixture of commercial, institutional and residential uses is planned for La Luz, it will by no means be a self-sufficient "new town." The outer loop freeway system will bind La Luz to Albuquerque and a projected major shopping center at Montañero Road and State Highway 448 should have area-wide response.

The Albuquerque City Planning Department was extremely receptive to the plan for La Luz. The mixture of dwelling types, commercial activities and recreational uses made possible by their special-use zoning will avoid the monotony of many suburbs. A variety of choices as to way of life will be offered the homebuyer, rather than merely a choice of "model homes." In La Luz the choices will range from the urban apartment to the single-family detached house on a large lot. The large lot houses will respect the opposite threshold of density from the concentrated housing—the lots will be large enough so that the landscape will dominate the buildings.

The project will be progressively annexed to Albuquerque—the master plan defining the zoning under the Special Use Zoning program (fig. 7). A mixture of economic levels is planned including low income housing, but because of initial cash flow the more expensive housing has been started first—\$15/s. f. construction cost with \$29-40,000 sales price. The housing constructed thus far at La Luz is for sale under a landowners' association legal framework. This means that by owning a house the family owns a share in the open common land and a multitude of recreational opportunities—including swimming, specially designed play sculpture and riding trails. Maintenance of roads and common areas is shared by the landowners' association.

In many ways the cluster planning of La Luz and the buildings themselves are very traditional,

but not by assembling superficial trappings in the name of pueblo architecture (i.e.: fake vigas, elaborately contrived parapet erosion, etc.). In similar ways to the response of the indigenous builder, the buildings at La Luz respond to the climate and landscape of New Mexico. The west side of the constructed buildings offers an essentially blank wall to the violence of the low afternoon summer sun and is closed to dust laden spring winds (fig. 9). But caught within the fabric of the buildings, the plazas and patios offer shelter from the cold winter wind and act as receptors for trapping solar radiation (fig. 5). The eastern facade of the connected, continuous buildings opens wide to the spectacular views, yet the glass lines are recessed beneath deep concrete fascias which have the effect of a shady portal (fig. 6). Because they are recessed deeply into the adobe walls, only small window openings are without overhangs. Summer cross ventilation is assured by the geometry of the building sections. Built on a hillside, the houses have inductive air drainage back to front because of the level change. Fountains within the patio areas will have psychological and, to some extent, evaporative cooling effect. Unlike traditional New Mexico buildings there is visual continuity of interior and exterior space through the use of large sliding glass doors.

The massive adobe walls serve as heat reservoirs, storing the solar heat during the day then transmitting it to the interior of the house during the cool night. The massive, blank, earth-colored walls bind the buildings to the landscape. The deeply cut windows and overhangs in shadow interrupt the blank wall areas. Some walls are stuccoed white to bounce light into a patio or room (fig. 11). Some patios have louvered roofs that are calculated to admit winter sunlight but exclude the summer sun. High walls protect outdoor yard areas and patios from wind and assure privacy between units (fig. 14). All exterior walls are stuccoed adobe with sandblasted concrete lintels spanning openings. Some of the adobes were manufactured on the La Luz site with material dug direct-

Fig. 13

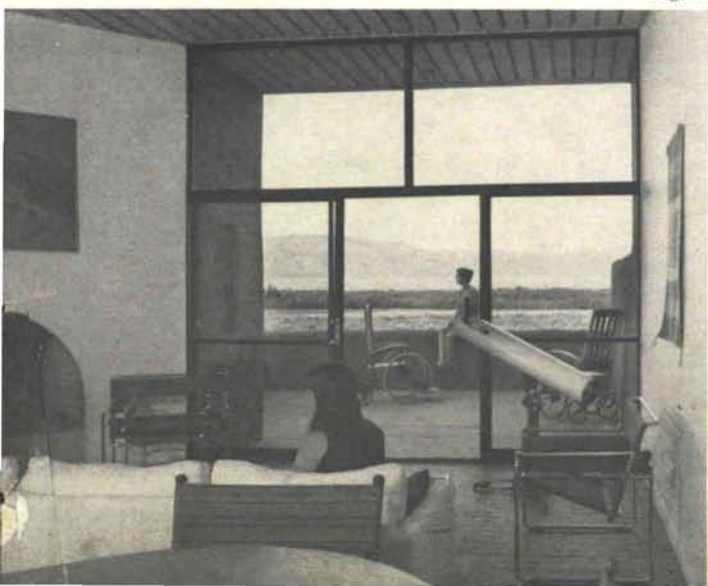
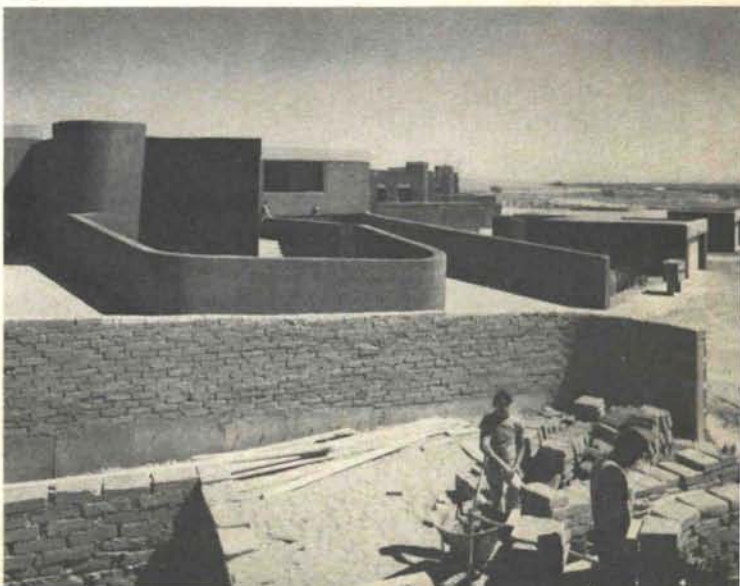


Fig. 14

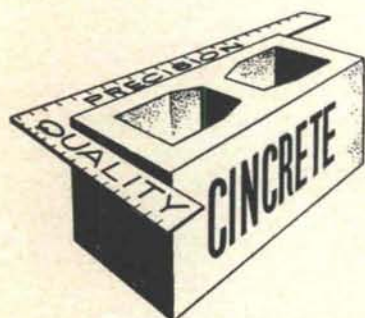


ly from the ground. Adobe, a material that does not require skilled masons for laying, has greater application today than in the past. Besides being a good structural and climatic solution, adobe provides excellent acoustical separation for the common wall houses at La Luz. Also, jobs are created since no special skills are required. The much discussed self-help projects are natural for adobe. Horizontal roof framing is wood with 6" batt insulation. Living area ceilings are gapped local white fir planks. Interior partitions are gypsum board on wood studs. Windows and sliding doors are anodized aluminum. Flooring is brick or hardwood. All interior walls are white (figs. 12 and 13).

Since the houses are built on hillsides, internal spatial arrangements are varied (fig. 10). There are three basic plans constructed thus far which angle toward selected views (fig. 12). The areas of the houses range from 1500 to 2150 sq. ft. Living,

dining and kitchen areas always orient directly to the primary view and generally connect spatially with patios or terraces. The bedroom zone of the houses is separated from the living zone by a privacy lock. Master bedrooms have patios or balconies. Living room terraces or patios open onto common plazas with fountains and landscaping. Plazas are multi-level following the natural topography, and they are landscaped with types of grass and trees that contrast with surrounding mesa ground cover. Earthen berms are used to deflect sound and wind and serve as a visual screen around parking areas. A wind break of trees will line the loop roads and provide shade. As development progresses west the buildings will grow successively higher to create an ascending barrier to the wind and low sun, yet looking over structures to the east at the same time.

—Antoine Predock



serving New Mexico
and the El Paso area
with

Quality Concrete Masonry Products and many allied building materials



Modernfold Wood and Plastic Folding Doors
Hollow Metal Doors and Frames
Steel and Formica Toilet Partitions
Commercial Toilet Accessories
Reinforcing and Fabricated Steel
Commercial Hardware
Moderncote Vinyl Wall Covering
Residential and Commercial Steel and Aluminum Windows

Builders Block & Stone Co., Inc.

P. O. Box 1633
Roswell, N. M. 88201
505 622-1321

Builders Block & Stone Co., Inc.

P. O. Box 10284
Albuquerque, N. M. 87114
505 344-0851

Builders Block & Supply Co., Inc.

P. O. Drawer FF
Las Cruces, N. M. 88001
505 524-3633

Builders Block & Supply Co., Inc.

Telephone
El Paso
915 532-9695

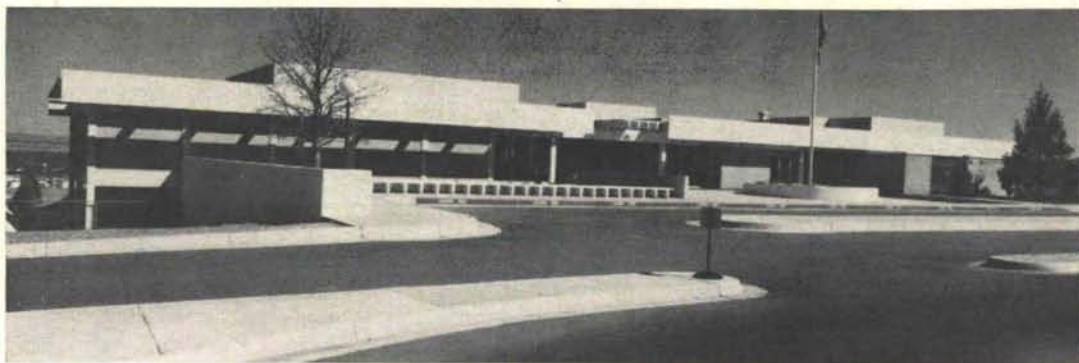
Members: New Mexico Concrete Masonry Association, National Concrete Masonry Association

SANTA FE • ALBUQUERQUE



SANTA FE BUILDERS SUPPLY CO.

1803 6TH STREET, N.W., ALBUQUERQUE, NEW MEXICO 243-5552 • 87107



UNM Clubhouse

**Engineered for savings
with an all electric design . . .**

Architect — John Reed
Owner — University of New Mexico

Freedom of design in an all electric building is almost unlimited. Less room is required for heating and air conditioning systems. With electric systems, expensive stacks, flues and vents are eliminated, and the owner can save 10% to 30% in initial installation costs. The result is a low first cost, low maintenance building with competitive per square foot operating cost.

Add up all the advantages and savings, and you'll find the all electric building invariably has the lowest total annual owning and operating cost.

The Public Service Company's Engineering Sales Department will be happy to show you how to apply the all electric concept to your commercial or industrial building.

**Write: Engineering Sales Department
Public Service Company of New Mexico
Post Office Box 2267
Albuquerque, New Mexico 87103**

HARRIS GLASS COMPANY, INC.

"You Can See Thru



Our Business!!!"

RETAIL

CONTRACT

- GLASS
- PLASTICS
- ALUMINUM DOORS
- ALUMINUM WINDOWS
- ALUMINUM STORE FRONTS
- WINDOW WALLS

SERVICE THROUGHOUT NEW MEXICO

SANTA FE
1224 Calle La Resolana
Phone 982-5204

ALBUQUERQUE
1223 4th N.W.
Phone 247-0731



Weyerhaeuser 7/16 CRAFTWALL prefinished architectural paneling is unmistakable. The genuine hard wood beauty costs no more than premium 1/4" paneling. Available in lengths up to 16' CRAFTWALL paneling carries a written lifetime guarantee.



SPECIFY CRAFTWALL

Weyerhaeuser Architectural Specialty Dealer

ALBUQUERQUE

1881

Lumber COMPANY

1969

3825 Edith, N.E.

Phone 345-2511

WOOD is WARM and WONDERFUL!

MEMBERSHIP:

BALDRIDGE HOME SUPPLY CENTER
GIBSON LUMBER CO.
HOME BUILDERS SUPPLY CO.
BOSQUE FARMS LUMBER CO.

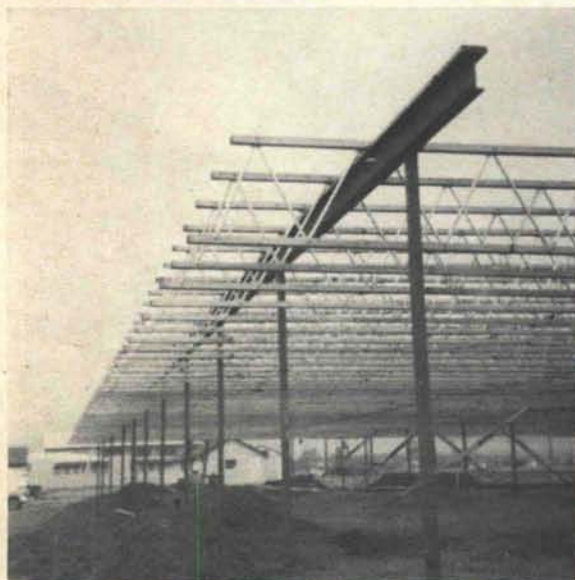
AMERICAN BUILDERS SUPPLY CORP.
SANDIA LUMBER CO.
APACHE LUMBER CO., INC.
GEORGIA - PACIFIC CORP.

U. S. PLYWOOD CORP.
DUKE CITY LUMBER CO.
NEW MEXICO TIMBER INC.

These are the experts on wood and wood products to contact
for information and consultation . . . members of



LUMBER MERCHANDISERS ASSOCIATION
ALBUQUERQUE, NEW MEXICO



"Delivery was prompt—just as scheduled—and
we found the installation to be quite problem-free and
simpler than anticipated."

. . . so said Adrian R. Hesselden, Hesselden Con-
struction Company of Albuquerque.

In this case, it was tapered TRUS JOISTS in a
Moriarty school. But whatever the project, the basic
advantages . . . the savings of the TJ system, come
back to every customer/builder. We hear it constantly.

We revel in it.
But we're prejudiced
So, ask our customers.

Building:
Moriarty
Elementary School

Architects:
Kruger, Lake
& Henderson



George B. McGill

7100 Constitution Avenue N.E.
Albuquerque 505/256-2058

THERMO-KOTE SPRAY FIBER INSULATION

- NON COMBUSTIBLE
- ORGANIC
- CHEMICALLY BONDED
- IDEAL FOR METAL BUILDINGS

COMES IN SNOW-WHITE FOR FINISHED AREAS
CAN BE APPLIED TO MOST ANY STRUCTURE

KEYSON APPLIED COATINGS, INC.

902 General Patch S. E.

Phone 298-7597

Albuquerque, New Mexico 87112

ALWAYS SPECIFY

STRENGTH CONCRETE SLABS

PERFECT FOR . . .

- APARTMENT
 - SCHOOL
 - MOTEL
- CONSTRUCTION

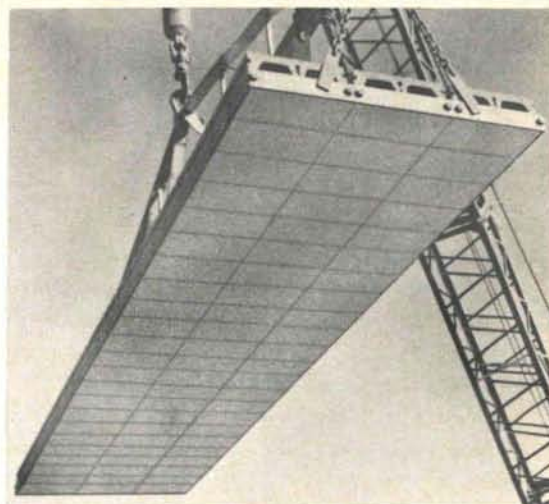
Fire-safe, Low-Maintenance Roofs
and Floors by . . .

THE



BUILDING PRODUCTS CO.

P. O. BOX 9977 • EL PASO, TEXAS • PHONE 772-1451



KEM METAL
KEWAUNEE SCIENTIFIC EQUIPMENT CORP.

REPRESENTING

K.S.E.
KEWAUNEE SCIENTIFIC EQUIPMENT
ADRIAN, MICHIGAN

K.T.F.
KEWAUNEE TECHNICAL FURNITURE CO.
STATESVILLE, NORTH CAROLINA

- Counseling, Sales & Installation of
- Scientific & Institutional furniture for
 - Schools — Hospitals
 - Research — Industry
 - Arts & Crafts and Homemaking



A Laboratory-Basic Medical Facility
University of New Mexico

Lembke Construction Co.—Contractor
W. C. Kruger & Associates—Architects

DONALD G. WHITING CO., INC.

1359 Harlan Street
Denver, Colorado 80215
Phone 303 238-7624

1009 San Mateo Blvd. S.E.
Albuquerque, New Mexico 87108
Phone 505 255-1684

4215 N. 16th Street, Suite No. 2
Phoenix, Arizona 85016
Phone 602 277-4701

McMURTRY PAINT & GLASS A VALSPAR COMPANY

Complete Architectural Services
for
Paints and Glass

Distributors for:
VALSPAR PAINTS
L.O.F. GLASS

Complete line of—
Fine carpets and drapes
Industrial Coatings
Wallpapers

1008 Marquez Pl. Phone 982-4661
20 years in
SANTA FE, NEW MEXICO

N. O. Nelson Co.

A VIGOROUS NEW COMPANY
SERVING ALL OF NEW
MEXICO WITH QUALITY
PLUMBING AND HEATING
EQUIPMENT AND SUPPLIES.

Catering To The Commercial
Building Industry

FEATURING



Plumbing And Heating Equipment

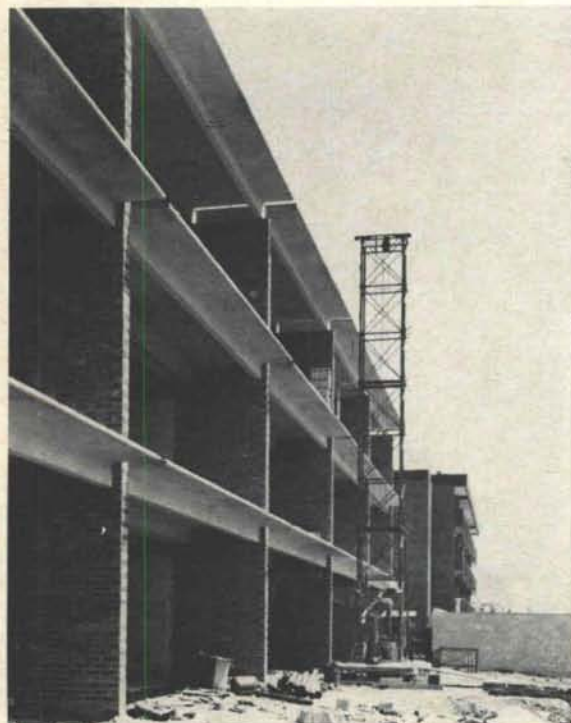
ALBUQUERQUE

N. O. Nelson Co.

3825 EDITH N. E.

(Formerly—Plumbing Division, Albuq. Lumber Co.)

THIS IS THE SYSTEM



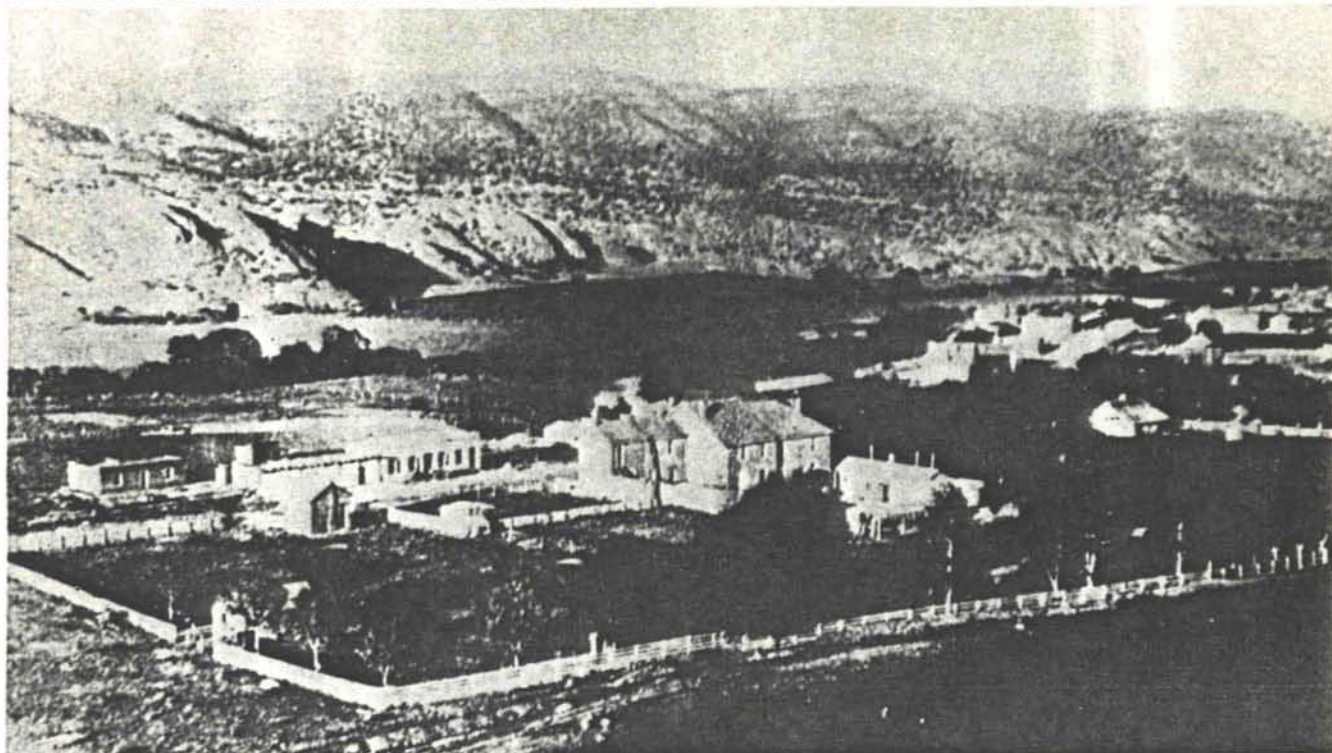
THE SECOND PHASE CONSTRUCTION OF THE LA VETA BUENA APARTMENTS IN ALBUQUERQUE FEATURING A ROOF AND FLOOR SYSTEM OF PRESTRESSED CONCRETE 8' TWIN TEES. THIS SYSTEM OFFERS THE ADVANTAGES OF LONG SPANS WITH MINIMUM DEPTH, MAXIMUM FIRE RESISTANCE AND LASTING STRENGTH. INVESTIGATE THE ADVANTAGES OF PRESTRESSED CONCRETE FOR YOUR NEXT BUILDING.

ARCHITECT — PETER LOOMS, A.I.A.
CONTRACTOR — CAUWELS & DAVIS
OWNER — H.A.S. DEVELOPMENT CO.

PRESTRESSED CONCRETE PRODUCTS, INC.

1900 Menaul Rd. N.E., Albuquerque, N. M. 87106 (505) 345-2536

LINCOLN, NEW MEXICO FROM A PHOTOGRAPH OF 1886 IN THE LINCOLN CO. HISTORICAL MUSEUM



The James J. Dolan House

Lincoln, New Mexico

R. Thomas Slates

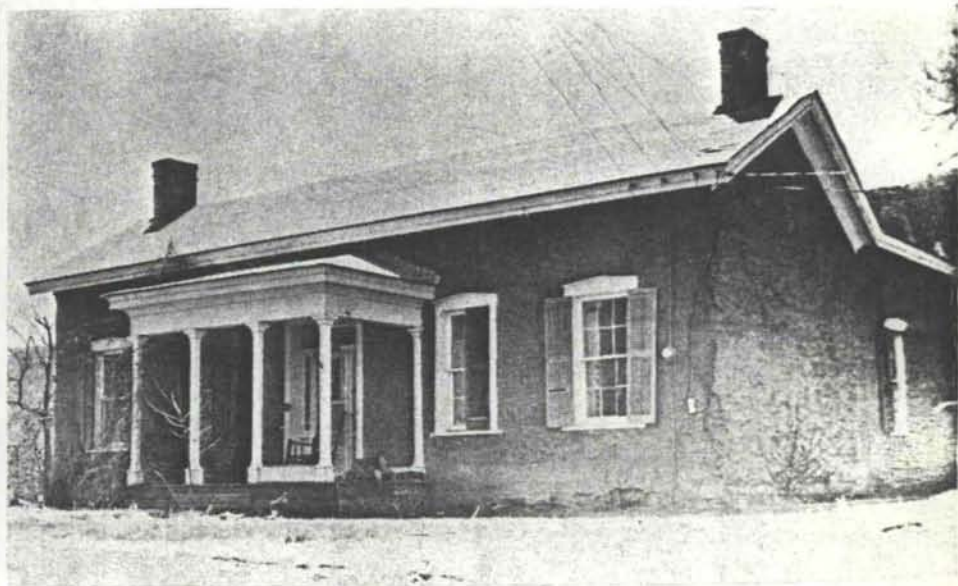
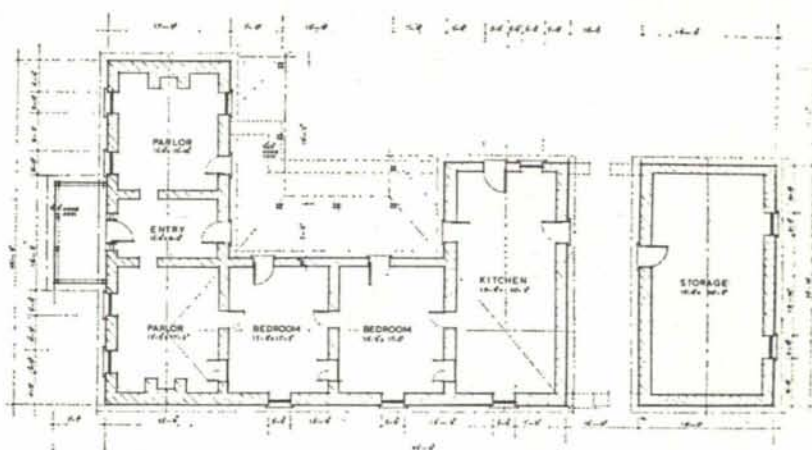
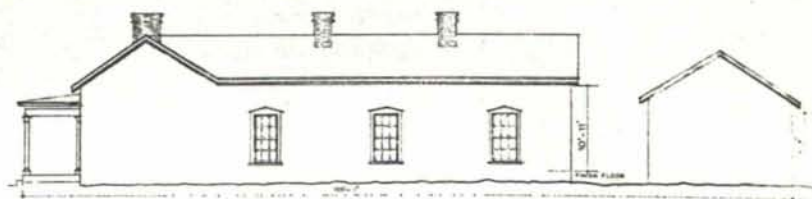
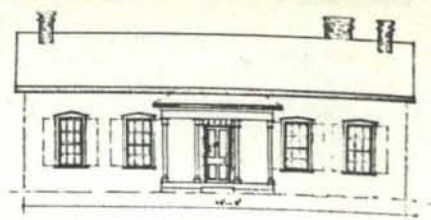
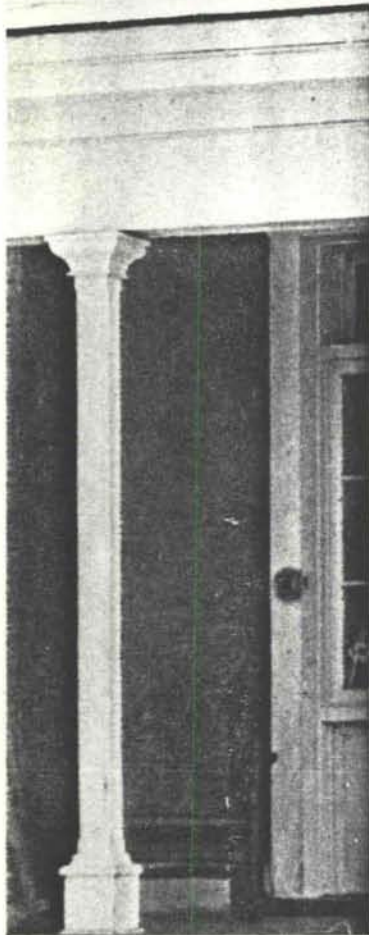
Background and Chronology

James Joseph Dolan was born in Loughrea County, Galway, Ireland on May 22, 1848. His parents emigrated to New York where the son worked for a few years in a store prior to enlistment in 1863 in the New York Zouaves. Discharged in 1865, Dolan re-enlisted in the 37th Regiment and served in several stations prior to his discharge at Fort Stanton in 1869. There he joined the L. G. Murphy Company as clerk and literally worked his way to the top. When Murphy formally withdrew from the company in 1877, Dolan formed a partnership with John H. Riley which lasted until 1880. On July 13, 1879, Dolan married Caroline Fitz, a niece of his former employer.

By the time the Lincoln County War subsided in August 1877, "the firm of J. J. Dolan and Company was in deep financial waters. Indebted to the Fitz estate to the tune of \$48,000 and to the Lincoln County Bank for a further sum of \$1,000, Dolan was forced to request of banker Thomas B.

Catron of Santa Fe a mortgage on the store (the old Murphy-Dolan Store), forty acres of land adjoining it, and a herd of cattle at Seven Rivers to secure the firm against claims of Spiegelberg Brothers of Santa Fe, to whom the business was indebted for supplies. In June 1878, Dolan executed a shirt-tail mortgage on everything owned by the business which resulted, when the trouble was over, in Thomas Catron's taking over the store, land, cattle, and all other properties, lock, stock, and barrel."

Following this financial debacle, James Dolan staged a rapid comeback. His "shrewd investments and personal capabilities brought about financial recovery, and in 1883 he was elected Lincoln County treasurer, serving in that capacity until 1888 when elected to the Territorial Senate. In 1889 he became receiver of the United States Land Office, Las Cruces, and was prominent in cattle ranching in and around Lincoln County. Dolan died in Roswell on February 26, 1898, a perfect example of the old adage about a bad young man sometimes making a good old man."



The date of the erection of the Dolan house cannot be proved by existing documents. Mr. Edward Penfield of Lincoln believes it was constructed in 1882 by a soldier from Ft. Stanton named Bailey who also built several other houses in the area. To judge from Dolan's precarious financial position in the late 70's, coupled with the lack of necessity of owning a large family type house before his marriage, I find it very difficult to believe the residence was constructed before 1880. No mention of a house is made in the mortgage foreclosure by Catron, and as fine a house as this would surely have figured in mortgage or foreclosure procedures.

An early reference to the Dolan house comes from George Curry, who was later to play an important role in New Mexico's bid for statehood: "It was late in 1885 when I started back to Lincoln County, going by way of Socorro . . . I went to Lincoln Town where I found a job with the J. J. Dolan Company. Jack Thornton was chief clerk in the big store (the old Tunstall and McSween Store) which carried a stock of general merchandise usually inventorying upwards of \$100,000. Mr. and Mrs. Dolan had built a fine home opposite the store. I had a room in the back of the store and took my meals with the Dolans."

In the Lincoln County Historical Museum, there is a photograph of Lincoln in 1886. The Dolan house (far right) is identifiable because of its unusual roof line and detached rear wing. There are no trees or shrubs near the building whereas landscaping of other houses along the main street is heavy. This would seem to indicate the recent construction of the residence.

Mrs. Dolan lived in the house until 1902 when, in settling the estate, the property was sold to Dr. Woods, a physician in Lincoln. After major remodeling, he opened the Bonito Inn, a combination hotel and hospital. When dining facilities were needed, the southeast *portal* was removed and replaced by a large dining room. This was accomplished by means of a shed roof constructed so as to join the two original wings and six new windows with 6/6 panes. Carbide lights were also installed. It is interesting to note that in the 1960's in replacing these later windows with larger ones, Bill Schrecengost found two columns from the original portal embedded in the wall. He also discovered gas lines for the carbide lights.

Dr. Woods apparently looked after tuberculosis patients for there are still two very small frame cottages on the premises. Early in this century the treatment for tuberculosis was fresh air. The cottages are only six by eight-feet with a seven-foot ceiling, but three sides were designed so that the upper part of the walls could be opened outward and propped up. These openings were screened for protection, but the feeling is one of confinement rather than of cure.

Subsequently the property changed hands several times. In 1917 it was bought by Lena Morgan who retained the Bonito Inn name for her hotel and boarding house. According to Mr. Penfield, the house was purchased in 1927 by Mrs. Julian (also known as Mrs. Wells) an intermediary for the Southern Pacific Railroad. The railroad was then interested in watershed rights so it could construct a dam across the Hondo Valley. In 1953, when the railroad had no further interest in watershed rights, the property was sold at auction to Mr. Bert Phingsten who deeded it to his daughter and son-in-law, Mr. and Mrs. William Schrecengost under whom the house has been restored. Though the title was recorded in Lincoln County Court House in 1959, the original abstract remains in San Francisco with other papers of the Southern Pacific Railroad.

Architectural Analysis

The construction period of the Dolan house sometime between 1882-85 places the house some twenty-five years after the last vestiges of the Greek Revival style had faded in the eastern part of the United States. Greek Revival houses were being built in centers like Baltimore and Philadelphia by the middle 1820's though the style had largely faded from that architectural scene by the early fifties. In the South, Midwest and far West the Greek manner held on until the Civil War, and stock window and door units were sometimes shipped around the Cape to San Francisco or prosperous mining areas of California. In New Mexico, however, the Greek fashion, known locally as the Territorial style, did not come into prominence until after the Civil War. Such a time lag is not surprising in light of the area's isolation; the railroad did not reach the Rio Grande Valley until 1880.

The hallmark of Greek Revival architecture would seem to be a pure classicism with plain surfaces and bold composition while its most obvious characteristic is the temple front. But such sophistication and discipline were not present in all buildings erected by ingenious Yankee craftsmen. In New Mexico the "Greek" element is often confined to isolated bits of ornamentation superimposed on an otherwise traditional adobe building.

The symmetrical facade and center hall plan of the front part of the Dolan residence, however, differentiate it from rank and file building in the Territory, and the front porch with its square columns and the entrance composition are unusually "correct" for New Mexico. Indeed this house constructed in wood or brick would be quite at home in rural areas of the Midwest from Michigan to Kentucky of an earlier generation. Windows throughout the house are the same size, and the balanced window placement on the facade, plus the symmetrical chimneys give the house a formal air. The brick chimney caps are another nice bit of Greek Revival detail.

KENTILE FLOORS

Asphalt, Vinyl Asbestos, Solid Vinyl,
Cork, Vinyl Sheet Flooring

KENTILE HIGHTSTOWN CARPETS

UNITED STATES CERAMIC TILE COMPANY

Romany-Sparton,
Pacesetter Ceramic Tile

RELIANCE PANELYTE, INC.

High Pressure Decorative Laminate

ALLEN INDUSTRIES

Carpet Cushions

AARDAL DISTRIBUTORS, INC.

524 Haines, N.W.
Albuquerque, N.M.
Phone 243-2296

1831 Myrtle Ave.
El Paso, Texas
Phone 532-3975

ALBUQUERQUE TESTING LABORATORY

Sub-soil Investigations
For Structural and Dam Foundations

**Two Drills and Crews now
available for Prompt Service**

Laboratory Analysis and
Evaluation of Construction Materials

**All work done under the supervision
of Registered Professional Engineers**

532 Jefferson St. N.E. — P. O. Box 4101
Phone AL 5-8916 Albuquerque
Phone AL 5-1322 New Mexico

KINNEY BRICK COMPANY INC.

Manufacturers of:

- Common Brick
- Patio Brick
- Face Brick
- Roman Brick
- Norman Brick
- "SCR" Brick

Distributors for:

- Summit Brick Co.
- Acme Brick Co.
- Major Brick Co.
- Eureka Brick Co.
- Texas Clay Products
- • • • •

Samples and information upon request

Visit Our Office & Showrooms at Plant
5 miles South just off of Second Street

ALBUQUERQUE, NEW MEXICO

Phone 877-4550 P. O. Box 1804, 87103

The plan is shaped in a "U," opening around a porch on the southeast side. None of the rear rooms communicate with the front central hall; instead one can only get to the rear kitchen by going outdoors along the *portal* or passing through two intermediate bedrooms. In this respect the plan follows the arrangement long prevalent in Spanish houses in New Mexico. The relative consistency of dimensions, however, and the fact that angles are uniformly square, departs from earlier building practices. The adobe walls are covered by a shale plaster with a rough texture. As evidenced by many layers of shingles visible at the eave line, the roof has always been sheathed with wooden shingles.

The Greek Revival appearance of the Dolan house would appear to be the result of Mr. Dolan's travels and also the influence of buildings at nearby Fort Stanton. Dolan would surely have been familiar with Greek Revival buildings in the east, and his military duties had taken him to other parts of the country. After purchasing the store his role as merchant must have necessitated visits to Santa Fe and perhaps even to St. Louis.

The influence exerted by military construction on the architecture of the Hondo Valley is indicated by the following excerpt from F. Stanley's *Fort Stanton New Mexico* (Pampa, Texas, 1964): "This post (Fort Gibson, Indian Territory), started in 1824, was one of the most popular on the frontier. The barracks building looks so much like the building Murphy was later to erect in Lincoln, New Mexico (later the Lincoln County Court House) that one wonders if perhaps the inspiration did not come from some soldiers previously stationed at Fort Gibson. The Murphy building was of adobe but the two-story frontage, the stairway and windows treatment seemed to be patterned after Fort Gibson." It is further interesting to recall that local tradition in Lincoln says that the builder of the Dolan house was a soldier from Fort Stanton.

R. Thomas Slates

LATH & PLASTERING AWARD

The New Mexico Lathing and Plastering Contractors' Association is privileged to announce the establishment of a scholarship fund for architectural students at the University of New Mexico.

The scholarship fund is to be administered by the Architectural Department of the University on a semester basis. The recipient of the award will be chosen by personnel designated by the University to handle scholarships, and no limiting qualifications are attached to this award.

The New Mexico Lathing and Plastering Contractors' Association establishes this scholarship in the interest of promoting better construction industry practices, and appreciates the opportunity to show its support of the activities of the Architectural Department of the University of New Mexico.

CAST-CRETE

ARCHITECTURAL AND
CUSTOM PRECASTING

Products limited
only by the
Architects' Imagination.

CAST - CRETE Inc.

2501 Princeton N.E. (505) 345-1070
Albuquerque, New Mexico 87107

OUR 33RD YEAR CLIMATE DESIGNING
PAINT FOR THE SOUTHWEST

HANLEY'S *and the*

COLOR
GUILD
ASSOCIATES

NEW WORLD
OF COLOR

ARCHITECTURAL PAINTS
FOR BEAUTY AND
PROTECTION

TECHNICAL COATINGS FOR
PROTECTION — FUNCTION
AND BEAUTY.

SUNFOE
AMBASSADOR



HANLEY PAINT MFG. CO., INC.

EL PASO, TEXAS
PH. 532-6921
PH. 755-9821

LAS CRUCES
NEW MEXICO
PH. 523-1222

ALBUQUERQUE
NEW MEXICO
PH. 265-1524

design interiors, inc.



YOUR OFFICE
PROFESSIONALLY
DESIGNED

YOUR IMAGE
PROFESSIONALLY
CARRIED OUT

YOUR COMFORT
DESIGNED FOR
EFFICIENCY

OUR SHOWROOMS ARE
FOR YOUR CONVENIENCE
COMPLETE FOR
YOUR TOTAL OFFICE ACCESSORIES
by
Herman Miller & Knoll Assoc.

5021 Lomas Blvd., N.E.
Albuquerque, N. M. 87110
Tel: (505) 268-4307

The Paper Mill, Inc.
132-W. Las Cruces Ave.
Las Cruces, N. M.

The Inkwell, Inc.
314 Ninth St.
Alamogordo, N. M.

Variations on a theme :

NEW *Spectra-Glaze*®

glazed masonry units
DESIGN SERIES

(not an alternate for
any other material)

Your choice in color, texture,
form, scale and pattern . . .
Select from a variety of
scored units to reduce scale
for as little as a nickel extra
per block . . . Build, decorate
and finish in a single
operation. Thru wall,
load bearing units elimi-
nate expense of back-up
wall . . . Specify
Spectra-Glaze glazed
concrete units in your
base bid to realize
their unique
advantages of
design flexibility
combined with
lower-in-the-wall
costs . . . Local
delivery, world-wide.

☐ Cataloged in SWEET'S

(R) Reg. U. S. Pat. Off.

Canada & other countries by The Burns & Russell Co.

FEATHERLITE TILE COMPANY P. O. Box 489, Erskine Rd.
LUBBOCK, TEXAS 79408 Phone 809 G PO-3-8202

Roofing and Sheetmetal Contractors



Corporation of Albuquerque

711 WHEELER AVE. S.E.

TEL. 243-3788

ALBUQUERQUE, NEW MEXICO 87103

Now Available State Wide:

**CREATIVE
CONCRETE
PRODUCTS**



*in 6 shapes, 11 sizes
Also available in colors
made in New Mexico by*

**AGP ALBUQUERQUE
GRAVEL PRODUCTS
COMPANY**

new mexico architecture

nma

Published bi-monthly, by the New Mexico Society of Architects American Institute of Architects, a non-profit organization, Box 7415, Albuquerque, N. M. 87104

Editorial Correspondence: All correspondence should be addressed to John P. Conron, P. O. Box 935, Santa Fe, New Mexico 87501.

Editorial Policy: Opinions expressed in all signed articles are those of the author and do not necessarily represent the official position of the New Mexico Society of Architects, A.I.A.

No responsibility will be assumed by the editor or publishing organization for unsolicited contributions. Return postage should accompany all unsolicited manuscripts.

Subscriptions: Write Circulation New Mexico Architecture, Box 7415, Albuquerque, N. M. 87104. Single copy 50c. Yearly subscription \$2.50.

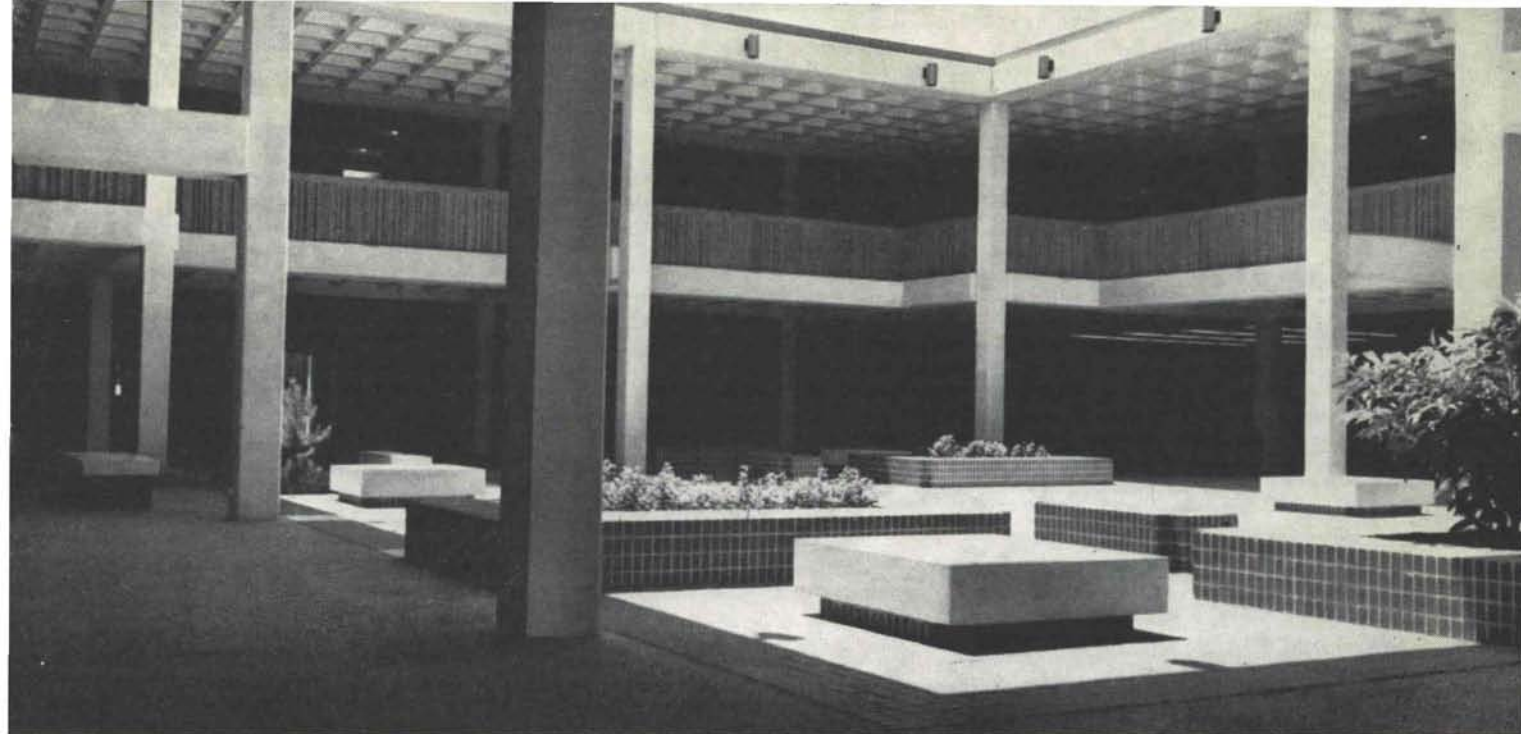
Change of address: Notifications should be sent to New Mexico Architecture, Box 7415, Albuquerque, N. M. 87104 at least 45 days prior to effective date. Please send both old and new addresses.

Advertising: Requests for rates and information relating to advertising should be addressed to W. M. Brittelle, Sr., Box 7415, Albuquerque, N. M. 87104, or Rob't. G. Mallory, 115 Amherst Dr. S. E., Albuquerque, N. M. 87106.

INDEX TO FIRMS

Cooperating in the public relation program of the NMA magazine, making possible its publication and the page upon which their message may be found.

Aardal Distributors, Inc.	20
Albuquerque Blueprint Company	4
Albuquerque Gravel Products Company	22
Albuquerque Lumber Co.	13
Albuquerque Testing Laboratory	20
Atlas Structural Concrete, Inc.	15
Baldrige Lumber Company	4
Builders' Block & Stone Co., Inc.	12
Cast-Crete, Inc.	21
Crego Block Co., Inc.	2
Design Interiors, Inc.	21
Featherlite Tile Company	21
Frontier Roofing Co.	22
Hanley Paint Mfg. Co., Inc.	21
Harris Glass Company	13
Hydro Conduit Corp.	24
Keyson Applied Coatings, Inc.	14
Kinney Brick Co., Inc.	20
Lath and Plaster Supply Co., Inc.	4
Lumber Merchandisers Association	14
McGill, George B.	14
McMurtry Paint Co., Inc.	16
Nelson, N. O. Co.	16
New Mexico Marble and Tile Co.	4
Prestressed Concrete Products, Inc.	16
Public Service Co. of New Mexico	13
Santa Fe Builders Supply Company	12
Sears	5
Southern Union Gas Company	5
Southwest Vermiculite Co.	6
Stryco Sales, Inc.	5
University Book Store	6
Wellborn Paint Mfg. Co.	23
Whiting Co., Inc., Donald G.	15

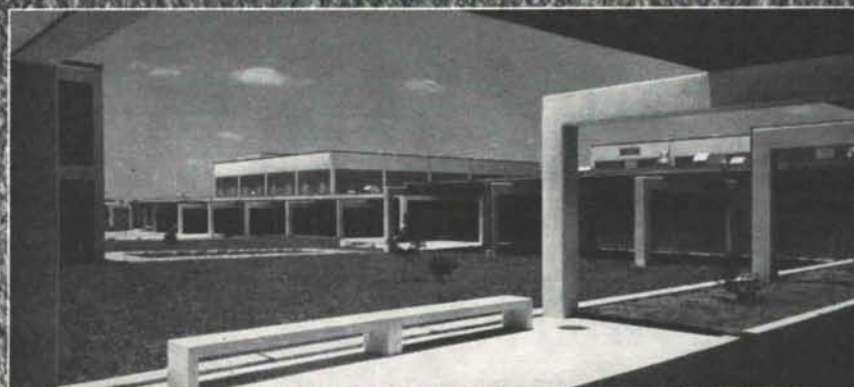


John H. Reagan High School, Austin, Texas; Architect: Page, Southerland & Page; General Contractor: Ricks Construction Company

Finish and waterproof concrete surfaces at the same time with THOROSEAL PLASTER MIX, a cement-base coating that made dramatic savings in the construction of this new school, 8,000 square yards of concrete were completely waterproofed with THOROSEAL PLASTER MIX, applied by spray, floated, and then re-sprayed for a durable, uniform texture which was contrasted with rough "exposed aggregate" panels.

STOP RUBBING CONCRETE!

Job-tested, spray-on coating finishes and waterproofs new school with amazing speed and at ½ the cost!



DISTRIBUTED IN NEW MEXICO
EXCLUSIVELY BY



ALBUQUERQUE, NEW MEXICO
2714 4TH STREET N.W.
PHONE 344-3558

Ed L. Jory Sr.
Albuquerque National Bank
Box 1344
Albuquerque, N.M. 87103

Bulk Rate
U. S. Postage
PAID
Roswell, N. M.
Permit No. 47

EVERYWHERE YOU LOOK

MORE BUILDINGS FEATURING CONCRETE CONSTRUCTION ARE BEING ERECTED. THE REASON IS THE LASTING BEAUTY AND VERSATILITY OF CONCRETE.



ARCHITECT — RALPH PHILLIPPI
CONTRACTOR — KEALY CONSTRUCTION CO.



ANOTHER EXAMPLE OF THE IMAGINATIVE USE OF CONCRETE IS THE NEW FIRST NATIONAL BANK TWENTIETH STREET BRANCH IN FARMINGTON, NEW MEXICO. THE ROOF IS BUILT ENTIRELY OF LYN Y PRESTRESSED CONCRETE MEMBERS FABRICATED TO SPECIFICATIONS BY HYDRO CONDUIT CORPORATION.



HYDRO CONDUIT CORPORATION

2800 SECOND ST., SW • ALBUQUERQUE, NEW MEXICO 87103