

CineArts  
720.5  
M4195  
Vol 10  
No 9-10

# new mexico architecture



september-october 1968 50c



Holiday Inn, Motor Hotel  
University Blvd. at Menaul, N.E.  
Albuquerque, New Mexico

Wm. W. Bond, Jr. & Assoc.  
Memphis, Tenn.  
Architects

Star Hill Construction Co.  
General Contractor

Ken Thompson  
Albuquerque, New Mexico  
Masonry Contractor

---

**90,000 8"x8"x16" red scoria masonry units were used in the construction of Albuquerque's second Holiday Inn.**

The red scoria masonry units were used in the construction of the Holiday Inn as a result of their extremely high density and strengths as registered in the laboratory tests. By reason of their high density tests, minimum sound transmission was assured.

---

**Masonry units manufactured and furnished by**

**CREGO BLOCK CO., INC.**

**6026 Second St., N.W.**

**Phone (505) 344-3475**

**Albuquerque, N. M. 87107**

---



# nma

vol. 10 • nos. 9 and 10 • sept. - oct. 1968 • new mexico architecture

## NMA News 8

Newly registered architects  
Awards deadline nears

## A New Cat House in Albuquerque 9

The Rio Grande Zoo's Feline Exhibit

## The Santa Fe Opera 15

A new theater arose from  
the ashes of the old

## Index To Advertisers 22

(Cover — Santa Fe Opera — Alan Stoker — photographer)

— Official Publication of the New Mexico Society of Architects, A. I. A. —

### Society Officers

President—Kenneth S. Clark, F.A.I.A.  
Vice-President—Beryl Durham  
Secretary-Treasurer—Joe Boehning  
Director—Richard S. Clark  
Director—Loren S. Mastin  
Director—Albert S. Merker  
Director—John B. Reed  
Director—Frank M. Standhardt  
Director—John P. Varsa

### Commission for NMA

John P. Conron—Editor  
Bainbridge Bunting—Editorial Consultant  
W. M. Brittelle, Sr.) —Advertising  
Robert G. Mallory)  
Van Dorn Hooker—Circulation  
John B. Arrison  
James Murray, III  
John B. Reed



**WORKING FOR:**  
An improved  
business climate in  
the New Mexico  
Construction Industry



W. D. Ross  
Executive Director

205 Truman N.E.  
Albuquerque,

265-8703  
New Mexico 87108

*Now Available State Wide:*

## **CREATIVE CONCRETE PRODUCTS**



*in 6 shapes, 11 sizes  
Also available in colors  
made in New Mexico by*

**AGP ALBUQUERQUE  
GRAVEL PRODUCTS  
COMPANY**



Weyerhaeuser 7/16 CRAFTWALL prefinished architectural paneling is unmistakable. The genuine hard wood beauty costs no more than premium 1/4" paneling. Available in lengths up to 16' CRAFTWALL paneling carries a written lifetime guarantee.

**▲ SPECIFY CRAFTWALL**  
Weyerhaeuser Architectural Specialty Dealer

**ALBUQUERQUE**

1881

*Lumber* COMPANY

1968

3825 Edith, N.E.

Phone 345-2511

**Variations on a theme :**

**NEW Spectra-Glaze®**

**glazed masonry units  
DESIGN SERIES**

(not an alternate for  
any other material)

Your choice in color, texture,  
form, scale and pattern . . .

Select from a variety of  
scored units to reduce scale  
for as little as a nickel extra  
per block . . . Build, decorate  
and finish in a single  
operation. Thru wall,  
load bearing units elimi-  
nate expense of back-up  
wall . . . Specify  
Spectra-Glaze glazed  
concrete units in your  
base bid to realize  
their unique  
advantages of  
design flexibility  
combined with  
lower-in-the-wall  
costs . . . Local  
delivery, world-wide.

Ⓢ Cataloged in SWEET'S

(R) Reg. U. S. Pat. Off. Canada & other countries by The Burns & Russell Co.  
**FEATHERLITE TILE COMPANY** P. O. Box 489, Erskine Rd.  
LUBBOCK, TEXAS 79408 Phone 809 & PO-3-8202



*design  
interiors, inc.*



5021 lomas blvd. n.e.

*interior planning*

*professional  
design service*

albuquerque, n.m. 87110

*retail and  
contract sales*

telephone 505-268-4307

furnishings • draperies • carpets  
• accessories •

## notice

We have relocated our Sales and Show Rooms at 5021 Lomas Blvd. N.E., Albuquerque. We now have 8500 sq. ft. of floor space where we can properly display the fine furniture as manufactured by:

- HERMAN MILLER
- KNOLL ASSOCIATES
- CORRY JAMESTOWN
- AMERICAN DESK
- AND MANY OTHERS

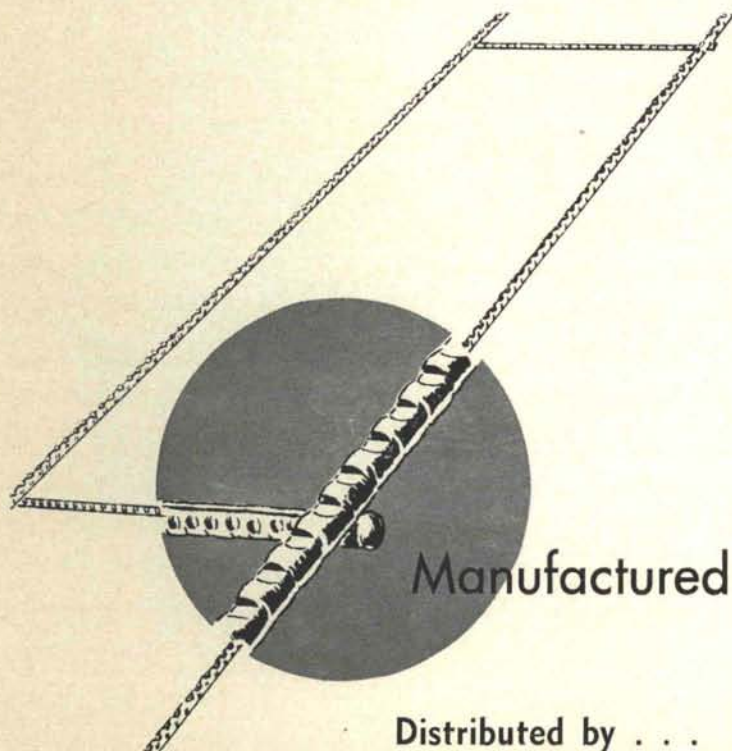
Watch for notice of our formal opening at which time we will introduce "SOURCE" as designed by Warren-Planter.

### Other Locations to Serve You—

The Paper Mill, Inc.  
132-W. Las Cruces Ave.  
Las Cruces, N. M.

The Inkwell, Inc.  
314 Ninth St.  
Alamogordo, N. M.

# Use **DUO-WIRE**...a better masonry wall reinforcement

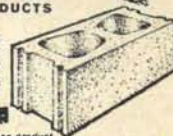


■ DUO-WIRE cross ties are full mesh welded and project slightly beyond side tension wires providing eight positive mortar locks every 16" in the wall.

■ DUO-WIRE cross ties are spaced every 16" (modular spacing) to avoid blocking core areas subject to other uses such as vertical reinforcement, grouting or filling of core with insulation, duct or conduit areas.

Manufactured by... **ATLAS**  
QUALITY BUILDING PRODUCTS

CONCRETE MASONRY • STRENGTHENED ROOFS and FLOORS  
PRESTRESSED and PRECAST STRUCTURAL CONCRETE  
TONGUE and GROOVE FENCE BLOCK  
STUCCO • CALCEMENT PAINT • SAKRETE  
SUNSET STONE • SUNSET BRICK\*



\*a limestone product

Distributed by . . .

Albuquerque Gravel Products • Crego Block Company • Edgar D. Otto & Son • Rio Grande Steel Co.



**DOVER**  
ELECTRIC  
ELEVATORS  
FOR HIGH-RISE BUILDINGS

Mr. Architect . . .

let us show you why a large percent  
of Building owners in New Mexico  
rely upon us for dependable Vertical  
Transportation.

Hunter-Hayes Elevator Co.

106 Buena Vista S.E.

Albuquerque, N. M. 87106



**HUNTER-HAYES ELEVATOR CO.**  
SUBSIDIARY ■ DOVER CORP.

Offices Throughout the Southwest



**WINROCK SHOPPING CENTER**  
Albuquerque, New Mexico

Geared Passenger Elevators by  
Hunter-Hays

Other installations throughout  
New Mexico such as:

State Capitol Buildings,  
Supreme Court Building  
State Highway Buildings,  
Glorietta Baptist Assembly  
Public Service Indian Hospital

To mention but a few

**KEM METAL**  
KEWAUNEE SCIENTIFIC EQUIPMENT CORP.

REPRESENTING

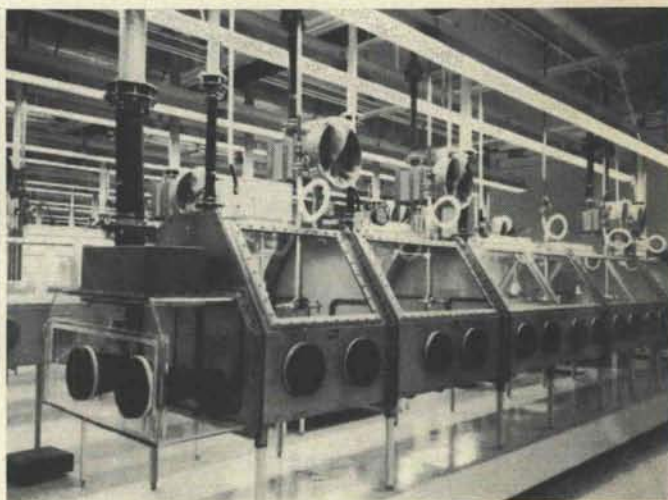
**K.S.E.**

KEWAUNEE  
SCIENTIFIC  
EQUIPMENT  
ADRIAN,  
MICHIGAN

**K.T.F.**

KEWAUNEE TECHNICAL FURNITURE CO.  
STATESVILLE, NORTH CAROLINA

- Counseling, Sales & Installation of
- Scientific & Institutional furniture for
  - Schools — Hospitals
  - Research — Industry
  - Arts & Crafts and Homemaking



Laboratory Equipment  
Dow Chemical — Building #59  
Rocky Flats, Colorado



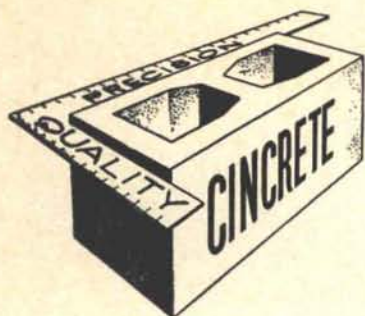
**DONALD G. WHITING CO., INC.**

1359 Harlan Street  
Denver, Colorado 80215  
Phone 303 238-7624

1009 San Mateo Blvd. S.E.  
Albuquerque, New Mexico 87108  
Phone 505 255-1684

4215 N. 16th Street, Suite No. 2  
Phoenix, Arizona 85016  
Phone 602 277-4701





serving New Mexico  
and the El Paso area  
with  
**Quality Concrete Masonry Products**  
and many allied building materials



*Modernfold Wood and Plastic Folding Doors*  
*Hollow Metal Doors and Frames*  
*Steel and Formica Toilet Partitions*  
*Commercial Toilet Accessories*  
*Reinforcing and Fabricated Steel*  
*Commercial Hardware*  
*Moderncote Vinyl Wall Covering*  
*Residential and Commercial Steel and Aluminum Windows*

**Builders Block & Stone Co., Inc.**

P. O. Box 1633  
Roswell, N. M. 88201  
505 622-1321

**Builders Block & Supply Co., Inc.**

P. O. Drawer FF  
Las Cruces, N. M. 88001  
505 524-3633

**Builders Block & Stone Co., Inc.**

P. O. Box 10284  
Albuquerque, N. M. 87114  
505 344-0851

**Builders Block & Supply Co., Inc.**

Telephone  
El Paso  
915 532-9695

Members: New Mexico Concrete Masonry Association, National Concrete Masonry Association

**TOTAL  
SERVICE**

**CARPET**

Architectural Carpet Consultants offer the architect and contract carpet buyer a TOTAL service from bid to installation. We maintain a complete display for your selection or will prepare for you in proposal form architectural specifications and technical data including wearability and maintenance figures, flame spread ratings, styles, colors, fibers, textures, and weaving methods illustrated by samples. We welcome your inquiries. Write or call 242-1212.



**ARCHITECTURAL  
CARPET  
CONSULTANTS**

1615 UNIVERSITY N.E.  
ALBUQUERQUE, NEW MEXICO 87106  
TELEPHONE (505) 242-1212



**DEADLINE FOR AWARDS IS  
OCTOBER 1, 1968**

As announced in the July-August issue of NMA two awards are to be made by the New Mexico Arts Commission.

**1) "AWARD OF EXCELLENCE"  
FOR NEW CONSTRUCTION**

The award will be presented to the designers of any man-made structure or structures built within the state of New Mexico, and which enhance the environment for Man.

**2) "AWARD OF EXCELLENCE" IN THE  
FIELD OF HISTORIC PRESERVATION**

This award will recognize valuable efforts in the preservation of significant architecture, artifacts, or sites of historical importance.

The New Mexico Society of Architects will administer the awards program. All citizens of New Mexico are invited to submit nominations.

*The Dead-Line for Receipt of  
Nominations Is October 1, 1968*

*Send to John P. Conron,  
Box 935, Santa Fe, N. M. 87501*

**NEWLY REGISTERED ARCHITECTS**

At its August 22, 1968 meeting, the New Mexico Board of Examiners for Architects granted architectural registration to the following five applicants:

Richard L. Killian, Hobbs, New Mexico  
Loran Francis Huber, Clovis, New Mexico  
Arthur L. Wood, Albuquerque, New Mexico  
Donald A. Krueger, Albuquerque, New Mexico  
Manuel A. Fernandez, Albuquerque, New Mexico

A Subscription to the  
**New Mexico Architecture**

is a fine gift  
and it is only  
\$2.50 per year



Send your check now  
to  
N.M.A. Box 18  
University Station  
Albuquerque, N. M. 87106



**FROM  
CONCEPT TO  
COMPLETION**



Exclusive distributors for TAYLOR

**Consultation  
Planning  
Design  
Layout**

Criteria, skill, artistry and experience are fused to produce laboratory furniture meeting the most exacting requirements of contemporary science educators and architects. Units immediately available and within the reach of any school or institutional budget.

Architects use our design consultation services for:  
Science Labs / Offices / Artrooms / Dormitories /  
Libraries / Auditorium Seating / Home Economics  
Labs / Gymnasiums

**UNIVERSITY BOOK STORE  
ALLIED SUPPLY CO.**

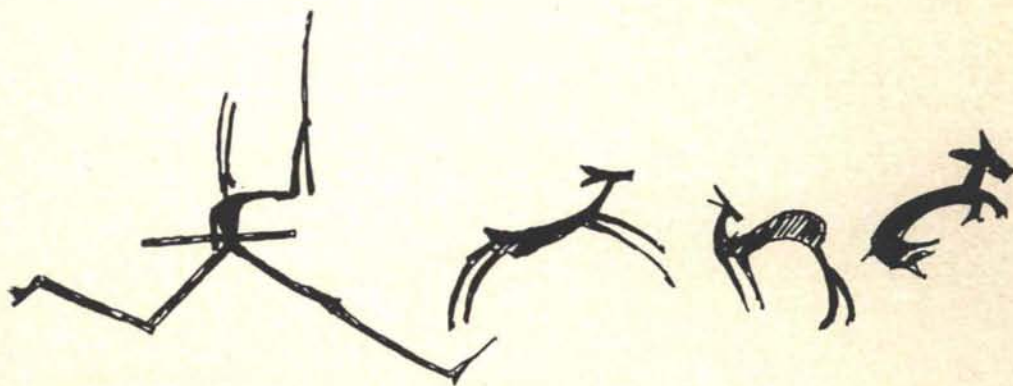
2122 Central, SE  
Phone 243-1776  
Albuquerque, N. M.





# A NEW CAT HOUSE IN ALBUQUERQUE the feline exhibit at the Rio Grande Zoological Park

Pacheco and Graham, Architects

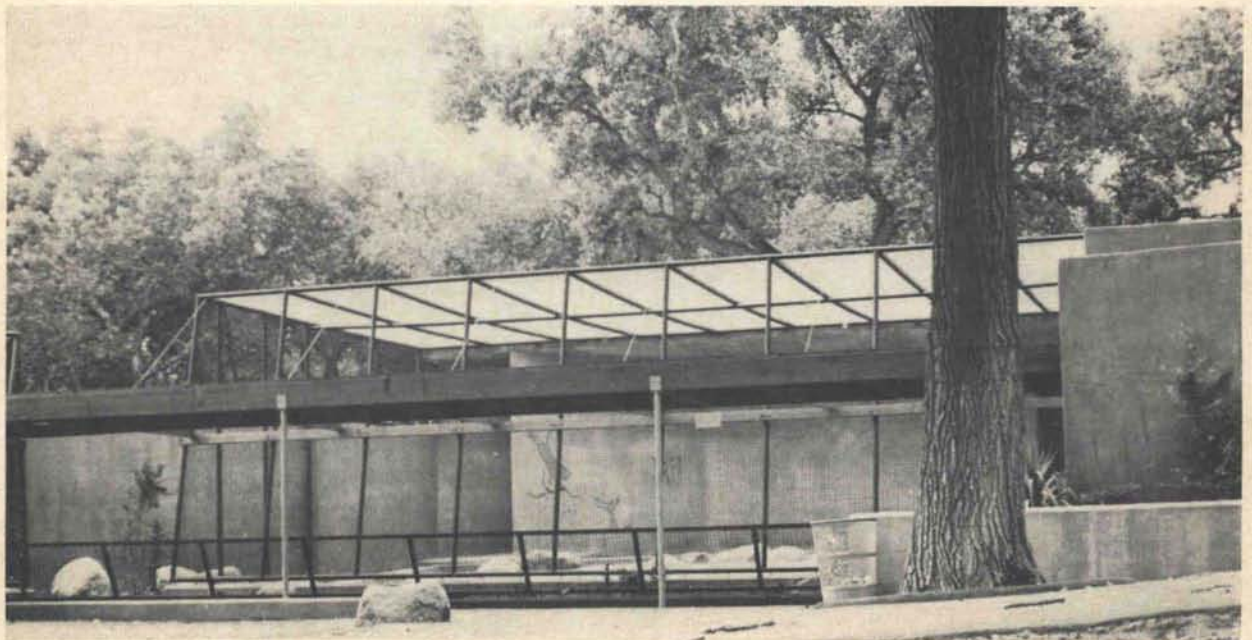




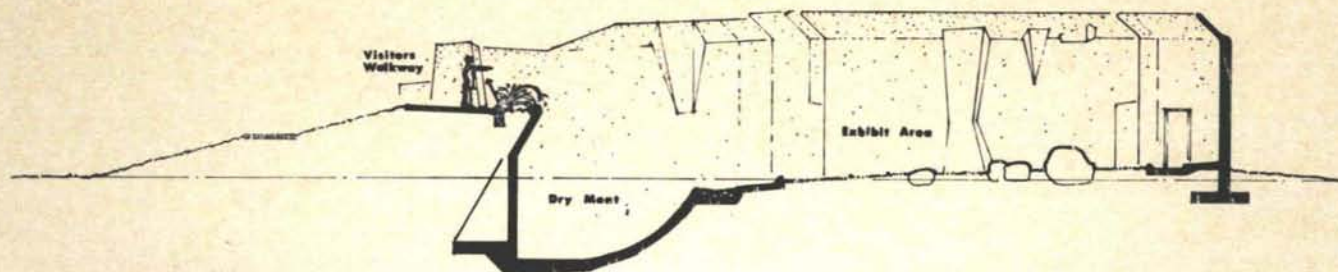


An attempt has been made in this complex to equate man with nature. These animals are a part of man's environment and background, even though they now seem quite remote. To convey this feeling, primitive drawings from the areas indigenous to the animals were selected and placed upon the walls of the exhibits. For the leopards and African lion, the drawings reflect bushman paintings of Central Africa. The jaguar exhibit has pictorial forms as drawn by the people of the Aztec culture. The drawings and petroglyphs in the mountain lion exhibit were taken from the local countryside. (See sketches bottom page 9, and photo this page).

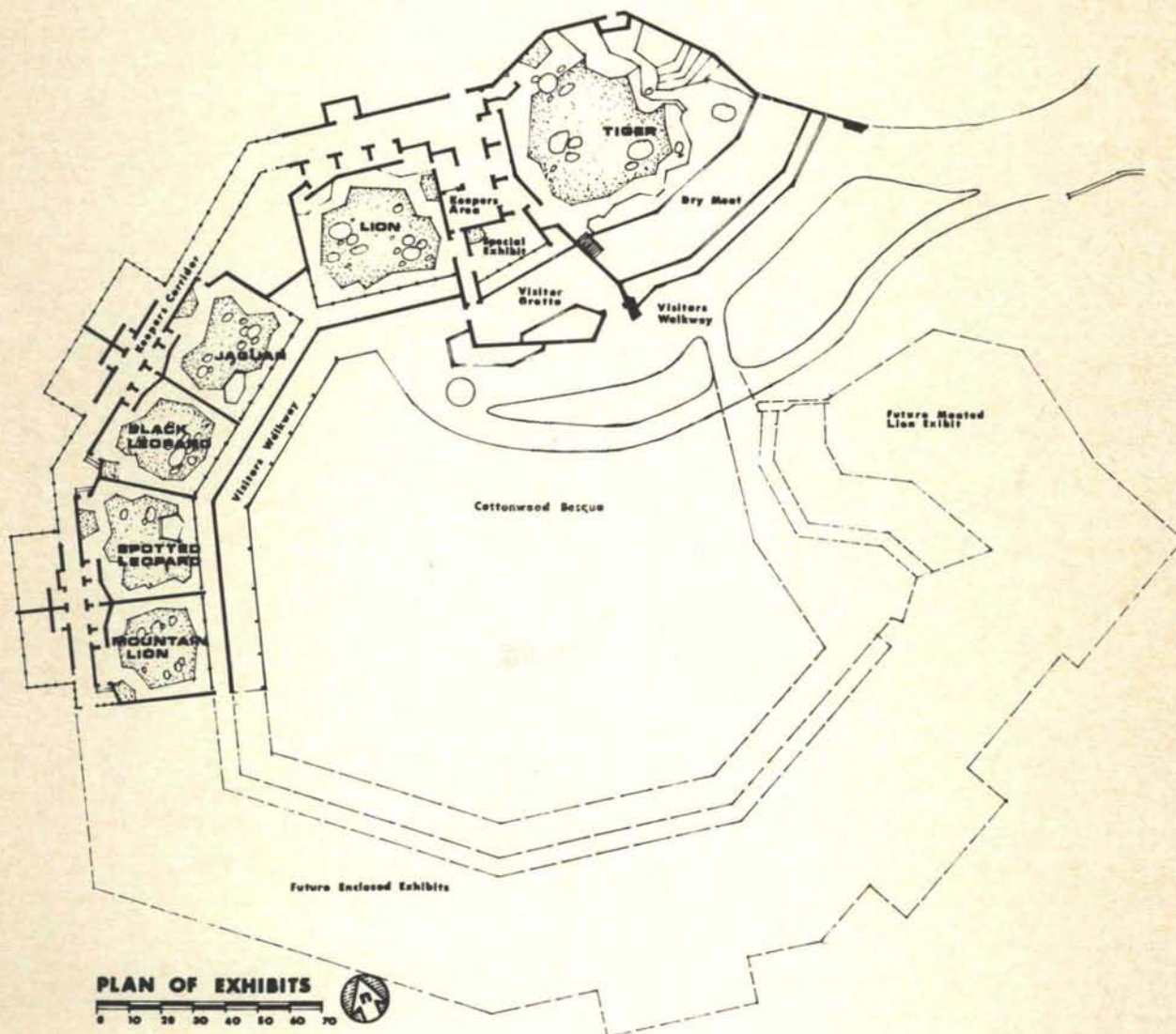
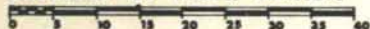
The program called for the display and handling of the major feline species including tiger, African lion, jaguar, black and spotted leopards and the North American mountain lion. First considerations were given to open-moated exhibits for all species but plans were later modified to include only the tiger in a moated exhibit. This decision was made because of the high cost of construction for moated areas. The tiger was chosen for the open exhibit because of his natural affinity for water and his visual size when viewed from the distance of the moat.







**SECTION AT TIGER EXHIBIT**



**PLAN OF EXHIBITS**

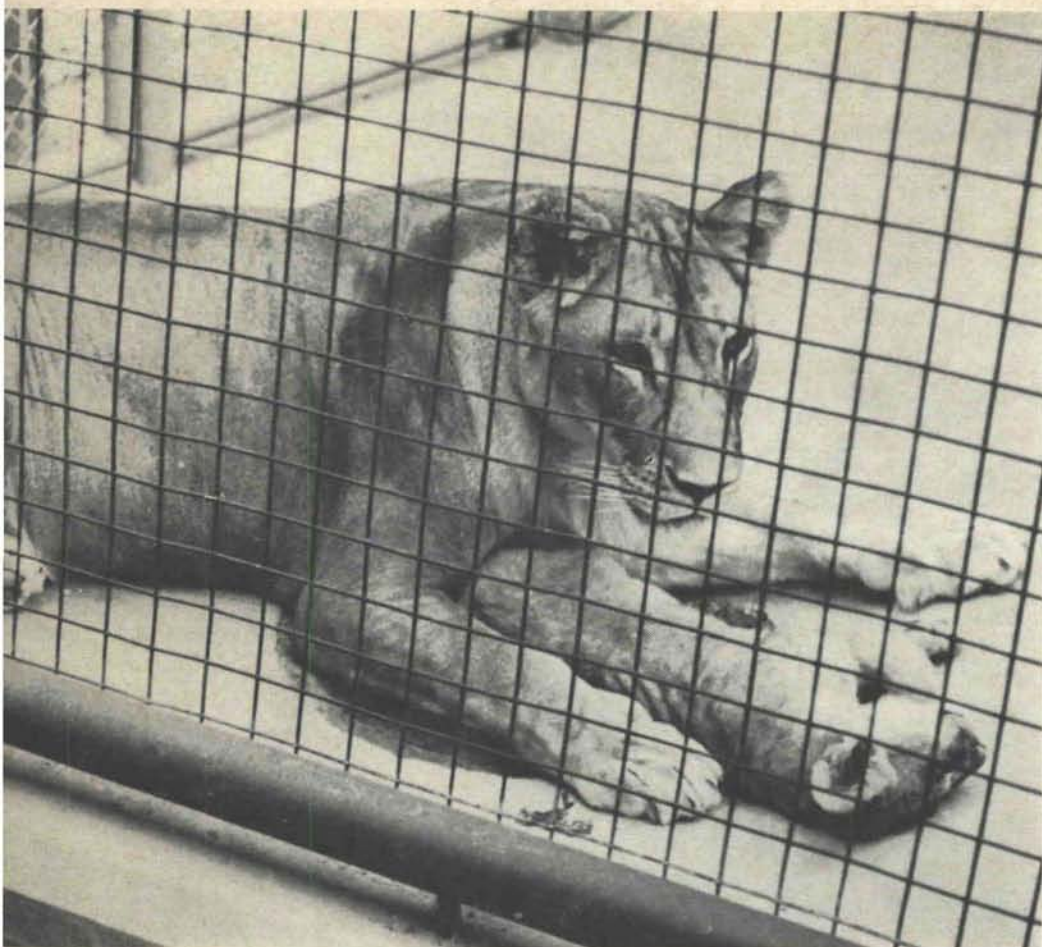


The visitor views this exhibit across an 18-foot dry moat that exceeds the tiger's jumping ability. The surrounding wall is also 18 feet high with a 3-foot overhang to foil any attempted escape. A waterfall, located on the wall, recirculates water at a rate of six gallons per second with the overflow forming a water trough at the edge of the dry moat. The tigers will frequently play and relax in the water areas. Further protection of the visitors from

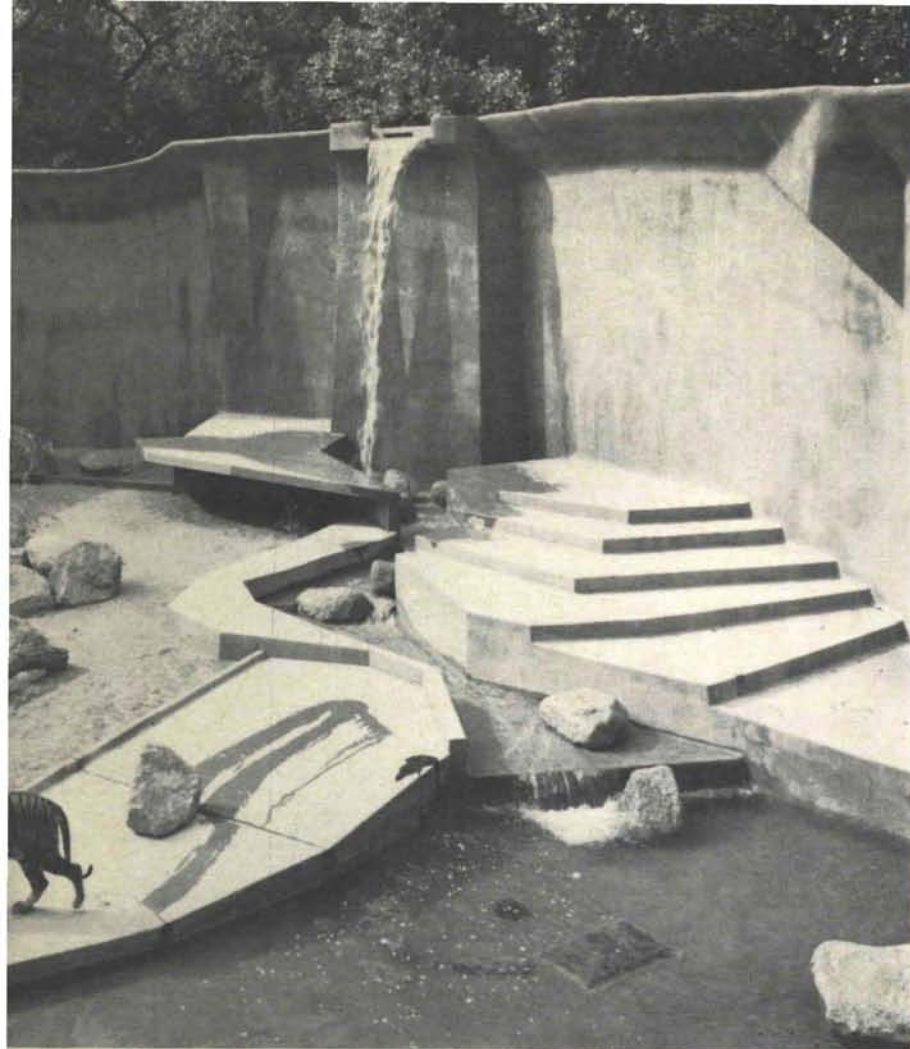
the animal area is provided by a sloping guard rail and intensive thorn-type landscaping.

The back wall of the exhibit will later form a backdrop for a rhinoceros exhibit and provision has been made for future eye-level viewing of the exhibit through glassed areas. The intent of the designer in the tiger exhibit and throughout the complex was to suggest the natural setting without attempting to duplicate nature.









Dick Kent—Photographer



The Visitor's Grotto and Special Exhibit Area is a small enclosed space designed to display animals on a temporary basis. The area can be closed for isolation and maternity purposes. The remaining five exhibits are enclosed with welded pipe and 2 x 2 steel mesh. Granite boulders, taken from nearby mountains, were used in each of the exhibits.

The keeper's area and sleeping pens located to the rear of the exhibits are designed to provide an efficient method of feeding and taking care of the animals while protecting the keeper. The basic module of the service area was formed by the use of a transfer cage which serves as a runway between exhibits and can also be used for holding the animals during the veterinarian's examination. Each of the exhibits is backed up with an outdoor holding pen that will be used to house spare or sick animals, as required.

In the design and layout of a complex of this nature, the architect is faced with a unique client as he must design for the activities and life patterns of the animals themselves. The ordinary construction concepts and design limitations must give way to disciplines that are quite unique to the field of zoo design. — C. G.

#### ARCHITECT:

Pacheco and Graham, Architects  
Albuquerque, New Mexico  
Channell Graham, AIA, Partner in charge of project.

#### OWNER:

City of Albuquerque  
Mr. Peter V. Domenici, Chairman  
City Commission  
Mr. Robert L. Burgan, Director  
Parks and Recreation Department

#### CONTRACTOR:

Bradbury and Stamm  
Construction Co.  
Albuquerque, New Mexico

#### CONSULTANTS:

Charles Faust, Designer San Diego Zoo, Consultant  
Howard Cottrell,  
Structural Engineer  
Claude Lyon, Mechanical Engineer  
Donald Fowler, Electrical Engineer  
Dr. Frank Hibben, Chairman  
Zoo Advisory Board

Photographs—Pacheco and Graham



## LEAVE THE FINISH TO KEYSON

All exterior precast concrete panels were coated with a textured cementitious coating giving a permanent, maintenance free finish. Applied directly to the concrete panels. Key-crete finish eliminates rubbing and finishing of concrete, gives color choice and considerable savings.

**KEYSON APPLIED COATINGS, Inc.**  
502 General Patch, S.E., Phone 298-7597  
ALBUQUERQUE, NEW MEXICO 87112



Los Alamos, N. M. High School  
Learning Center

Architects—Buffington & Hill  
Silver City, N. M.

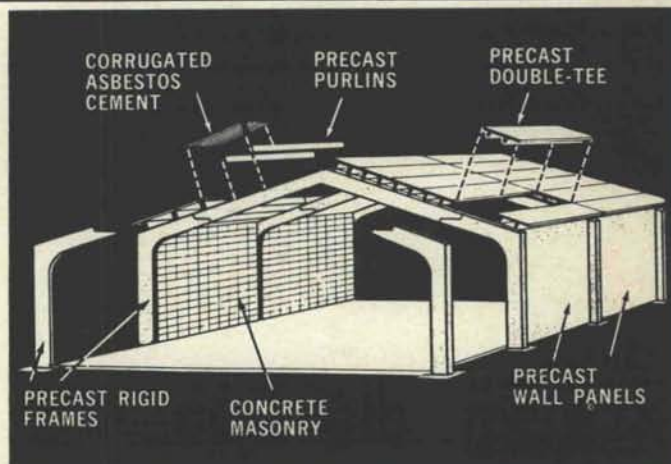
Contractor—Bradbury & Stamm

## Construction Problems Solved

### WITH UNIFRAME CONCRETE BUILDINGS

UNIFRAME CONSTRUCTION IS IDEALLY SUITED FOR BUILDINGS NEEDED BY MANUFACTURERS, BUSINESSMEN AND RANCHERS, FOR FACTORIES, STORES AND WAREHOUSES WITH SINGLE SPANS UP TO 52 FEET.

- UNOBSTRUCTED INTERIOR
- STRUCTURAL STRENGTH
- UNMATCHED DURABILITY
- MINIMUM MAINTENANCE
- MAXIMUM FIRE SAFETY
- WIDE SIZE RANGE
- CUSTOM BUILT APPEARANCE
- WALL HEIGHTS UP TO 16 FEET



PRICED COMPETITIVELY WITH THE MOST ECONOMICAL BUILDINGS AVAILABLE

**EDGAR D. OTTO & SON INC.**

243-6721

2700 2nd St. S.W. Albuquerque, New Mexico 87103

## LATH and PLASTER SUPPLY CO., Inc.

116 Industrial Ave. N.E.

Phone (505) 344-2303

ALBUQUERQUE, NEW MEXICO 87107

### DISTRIBUTORS FOR:

- Keene Penn Metal Structural Steel
- Dur-O-Wall Masonry Reinforcing
- Kewanee Doors and Frames
- Milcor Access Doors
- Keystone Steel & Wire
- Plaster Weld & Weld Crete

Complete Line of Lathing and Plastering Systems, Drywall Systems,  
Industrial Plasters and Masonry Products.

*For the best possible prices and services, CALL US!*



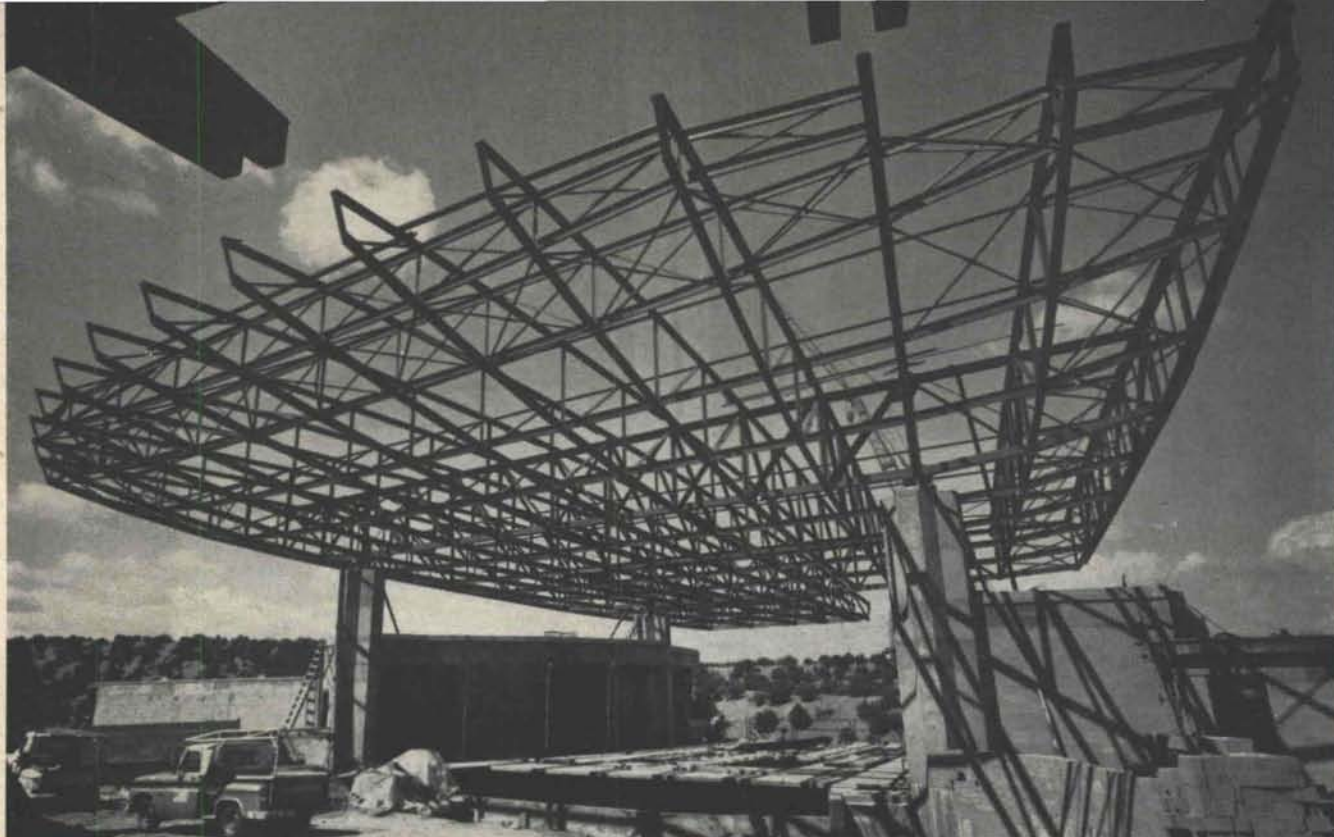
# from the ashes of disaster arose a new theater the SANTA FE OPERA

On July 27, 1967 the Santa Fe Open Theater was destroyed by fire. The blaze began at approximately 3:30 A.M. Of undetermined cause, the fire started under the stage and quickly spread throughout the structure. All that remained of the once proud opera were the two concrete balcony stairways, the small box office structure, and an indomitable will to begin again.

The original theater and its balcony expansion was reported in the September-October issue of *New Mexico Architecture*. The model for this new opera house, along with a description of the expanded facilities, was published in the November-December 1967 NMA.

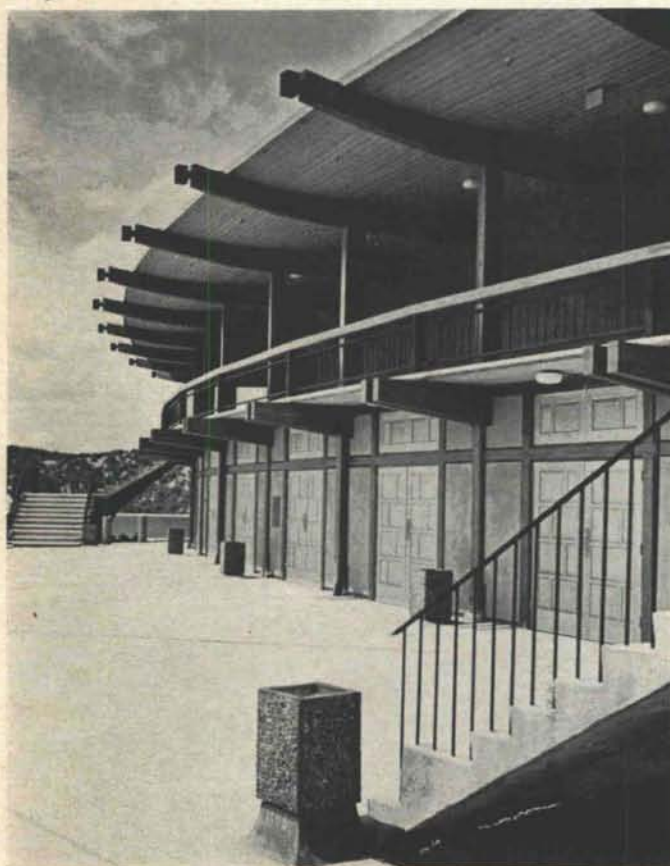






The Stage roof which covers more than one quarter of an acre, provides stand-up space to manipulate all of the Stage lighting, spots, floods and accent lights and contains more than 13½ miles of electric wire to facilitate the controls.

The balcony steps left standing after the fire, now lead somewhere: to the new theater balcony.



## THE SANTA FE OPERA ASSOCIATION

John O. Crosby, General Director

### ARCHITECTS

McHugh and Kidder, Architects  
Santa Fe, New Mexico  
John T. Midyette III, Project Captain

### STRUCTURAL DESIGN

Earl P. Wood & Associates  
Santa Fe, New Mexico

### STAGE LIGHTING

Robert Benson of  
Kleigl Brothers  
Long Island City, New York

### MECHANICAL ENGINEERS

Barkmann and Rogers, Consulting Engrs.  
Santa Fe, New Mexico

### GENERAL CONTRACTOR

Modern Construction Company  
Santa Fe, New Mexico  
Grant Hall, Project Superintendent

### ACOUSTICAL CONSULTANT

Jack Purcell of  
Bolt, Beranek & Newman  
Van Nuys, California

### ELECTRICAL ENGINEER

Carl Albach, Consulting Engineer  
Santa Fe, New Mexico

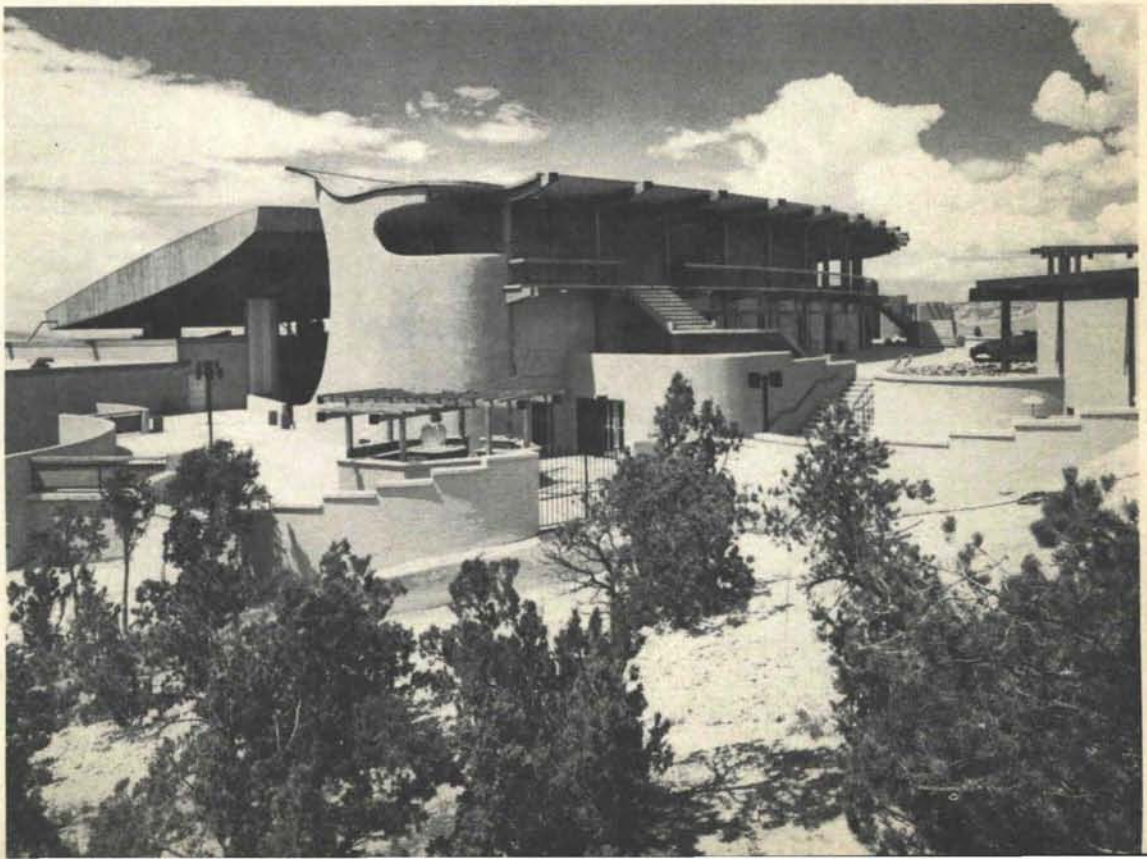




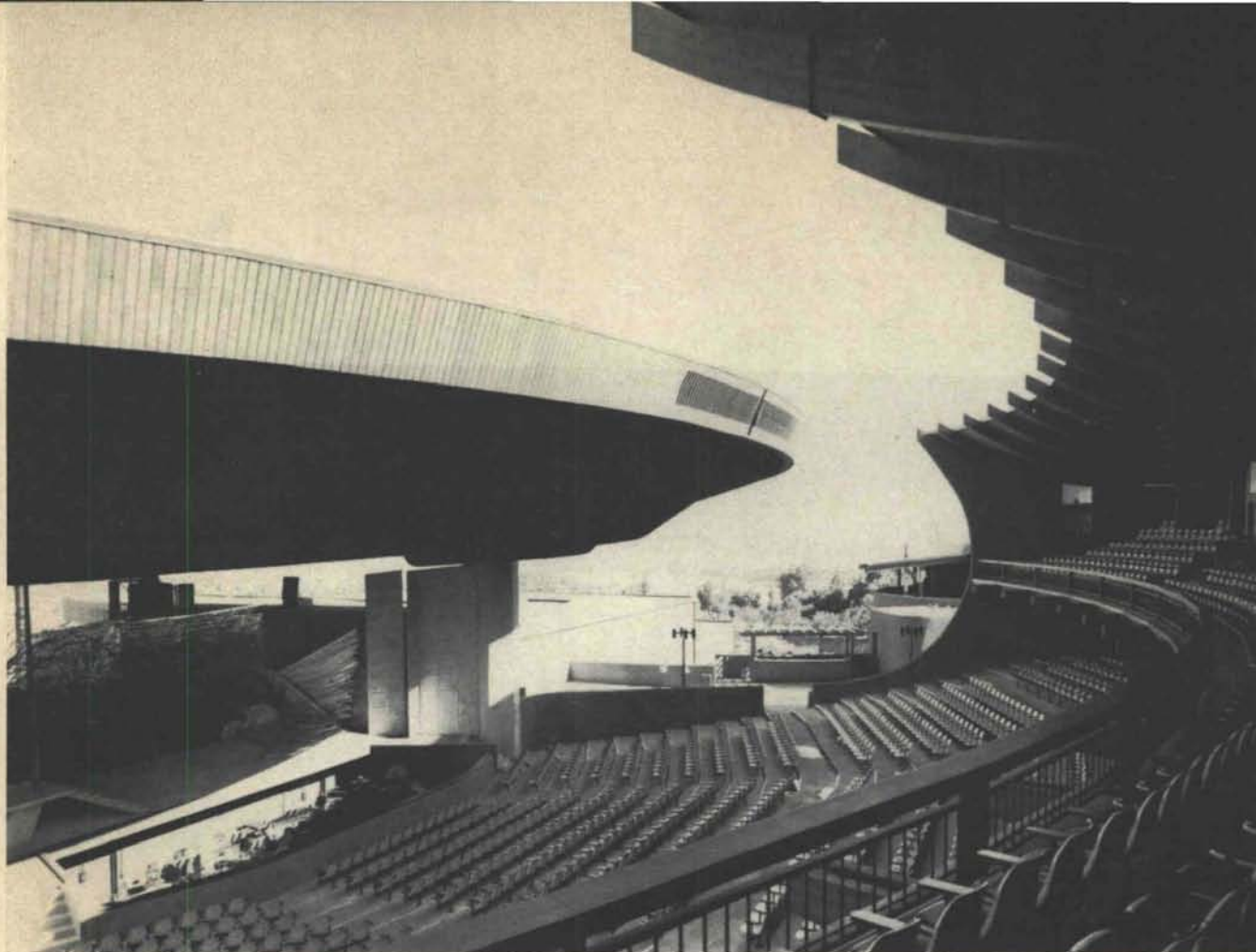
"True to his own predictions, and contrary to those of the enlightened pessimists, Crosby opened his new theater, on schedule, July 2, 1968. It is a magnificent new house that combines the charm of its predecessor with the advantages of enlarged facilities and improved technical resources.

The theater is a triumph in just about every way, and — more important — it seems to be housing some extraordinary artistic commodities. Crosby has survived disaster without compromising integrity."

*Martin Bernheimer, Music Critic,  
Los Angeles Times, August 13, 1968*







"The Santa Fe Opera Company isn't real. What I witnessed or thought I witnessed a week and a half ago when I seem to recall visiting a grand hill-top in New Mexico was so patently improbable that I now believe I had gone on a hallucinatory trip.

"I persist in thinking that I arrived at a full-blown opera evening virtually in the middle of desert-like grazing lands, and entered a structure of sweeping modern design. While most of the audience sat under a broad redwood roof extending over the balcony and beyond or under a stage canopy reaching towards it, I sat in a space between, bared to the elements, with sky and stars overhead. Yet from the handsome deep stage, open at its rear to a distant dark horizon of mountains and the lights of Los Alamos, I heard everything perfectly. The clear tone and diction of the soloists, and the chorus' extra-sonorous singing, were unaffected by the cool breeze that washed the air between.

"The large orchestra, sunk to a depth that rendered even the conductor invisible in a pit larger than that at the San Francisco Opera House, played with full spirit yet never overpowered the voices — the Bayreuth ideal.

"The opera was a new one, Hans Werner Henze's 'The Bassarids.' The principals were first rate, the production strikingly designed.

"It was not to be believed. Twelve months before, the entire Santa Fe Opera house with all its contents had burned to the ground—total wipeout. Yet here it was again, with a finished production in one of America's handsomest operatic settings."

*Robert Commanday, Music Critic,  
San Francisco Sunday Examiner  
and Chronicle*

"In the eternal, brooding mountains of New Mexico, things take a long time to grow and even longer to change. Yet amid the Sangre de Cristo range outside Santa Fe this year, a dramatic new feature has jugged up in a matter of months. It is the Santa Fe Opera Company's new theater, a bold cross between an open-air arena and a Pueblo fortress. It has no side walls, and its see-through stage provides the action with a striking natural backdrop of dancing hills. Above the orchestra seats, a redwood-beamed adobe canopy sweeps upward, then breaks off abruptly to reveal a broad area of New Mexico sky.

"The structure is really something, especially since a year ago it was really nothing. Fire destroyed the old 1957 building in midseason last year (TIME, Aug. 4, 1967). Against awesome odds, General Director John Crosby rode herd on a double-shift construction schedule through the winter and spring to get the house ready for last month's season opener."

*TIME — August 23, 1968*



"Whatever Santa Fe has accomplished in the past 11 years can be credited to Crosby, a man of singular vision and devotion who oversees every detail on-stage, off-stage and backstage. Building the new theater in a mere 300 days and going ahead on schedule with an ambitious season, Crosby has managed to turn disaster into relative triumph."

*Martin Bernheimer, Music Critic  
Los Angeles Times  
Sunday, August 25, 1968*



*John Reardon as Pentheus and Loren Driscoll as Dionysus in the 1968 production of the Bassarids.*

All Photographs — Allan Stoker



## ALBUQUERQUE TESTING LABORATORY

Sub-soil Investigations  
For Structural and Dam Foundations

**Two Drills and Crews now  
available for Prompt Service**

Laboratory Analysis and  
Evaluation of Construction Materials

**All work done under the supervision  
of Registered Professional Engineers**

532 Jefferson St., N.E. — P. O. Box 4101  
Phone AL 5-8916 Albuquerque  
Phone AL 5-1322 New Mexico

## *New In New Mexico*

### MANZANO QUARTZ, INC.

614 Headingly Ave. N.W. (505) 344-3337

**Albuquerque, New Mexico**

Wholesalers of Crushed Quartz  
Building and Veneer Stone

Terrazzo Marble Chips

Wonderful in the accenting of  
Buildings, Fireplaces and Landscaping

**Visit our "Stone Yard"**

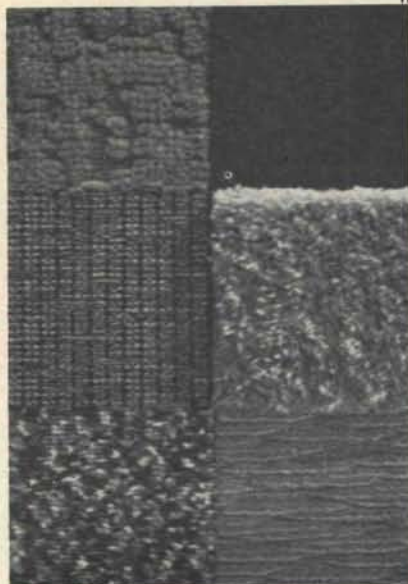
**6023 Edith Ave. N.E. (rear)**

**8:30 a.m. to 4:00 p.m.**



# COMMERCIAL CARPET

IN  
NYLON  
•  
ACRYLIC  
•  
MOD-  
ACRYLIC



Carpets specifically designed and constructed for ultimate traffic use in commercial buildings, schools, hospitals, offices, etc. Samples and quotations on request.



PHONE 344-2317  
312 INDUSTRIAL, N. E. P. O. BOX 1963  
ALBUQUERQUE, NEW MEXICO 87103

# INVESTIGATE THE BEST

## EPOXY TERRAZO FLOORS

NEW MEXICO MARBLE & TILE CO. WILL SOON COMPLETE INSTALLATION OF THE LARGEST EPOXY TERRAZZO FLOOR JOB IN THE UNITED STATES, AT ST. JOSEPH'S HOSPITAL IN ALBUQUERQUE. THIS IS THE MATERIAL THAT WILL SURELY REVOLUTIONIZE THE FLOORING INDUSTRY IN COMMERCIAL & INSTITUTIONAL BUILDINGS. EASILY CLEANED WITH DETERGENT, IT NEVER NEEDS WAXING AND PERMANENTLY RETAINS ITS LUSTRE.

YOUR INQUIRIES ARE INVITED INTO THIS REVOLUTIONARY NEW FLOORING MATERIAL.

**NEW MEXICO  
MARBLE AND TILE CO.**  
414 Second St., S.W. Albuquerque, N. M.  
P. O. Box 834 • Phone 243-5541



The new hosiery and garment plant for the Hanes Corp. of N. M. For this plant 94,000 sq. ft. of 8' double tee roof members spanning 70 feet, plus prestressed insulated wall panels, columns and girders were detailed, fabricated and delivered in approximately 60 days.

Architect—E. F. Rutemeyer—Atlanta, Ga.  
Contractor—J. A. Jones—Charlotte, N.C.

1900 MENAUL ROAD N. E., ALBUQUERQUE, NEW MEXICO 87106



## PRESTRESSED CONCRETE PRODUCTS, INC.

MANUFACTURERS OF ROOF AND FLOOR DECKS

### THEY EXCEL IN

• ECONOMY • PERMANENCY • DURABILITY

• VERSATILITY • FLEXIBILITY

and most important • FIRE RESISTANCE

(505) 345-2536



# WOOD is WARM and WONDERFUL!

## MEMBERSHIP:

BALDRIDGE HOME SUPPLY CENTER  
GIBSON LUMBER CO.  
HOME BUILDERS SUPPLY CO.  
BOSQUE FARMS LUMBER CO.

AMERICAN BUILDERS SUPPLY CORP.  
SANDIA LUMBER CO.  
APACHE LUMBER CO., INC.  
GEORGIA - PACIFIC CORP.

U. S. PLYWOOD CORP.  
DUKE CITY LUMBER CO.  
NEW MEXICO TIMBER INC.

These are the experts on wood and wood products to contact  
for information and consultation . . . members of



## LUMBER MERCHANDISERS ASSOCIATION

ALBUQUERQUE, NEW MEXICO



### QUOTE!

"Although the building had an unusual soffit and overlay, the job was completed with ease because of the TRUS JOIST system."

### UNQUOTE!

We hear such statements constantly. This time it's Mr. Neil E. Weaver of Weaver Construction Co., Albuquerque, talking. He goes on to say that TRUS JOIST works closely with them from shop drawings through delivery to meet construction time requirements. This is to be expected of TRUS JOIST by every customer — contractor or architect.

It's a fair exchange.

Because then they write our ads for us.

Building:  
Universal C.I.T.  
Office

Architect:  
Hildreth Barker,  
A.I.A.



## George B. McGill

1113 Pennsylvania, Northeast  
Albuquerque 505/256-2058

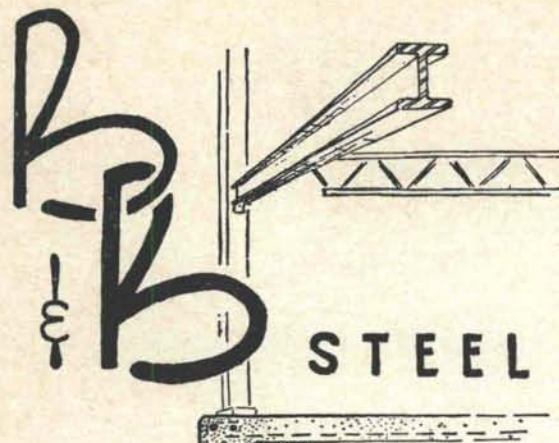


# Fresh Air Heating?

if you want the job done right  
...do it with gas

SOUTHERN UNION  **GAS** COMPANY





**B & B STEEL**

**Jim Denison** 525 Harden Blvd.  
 Hobbs, New Mexico 88240 phone 393-7814  
 Plain Steel - Structural - Misc. - Rebars - Joists

## new mexico architecture nma

Published bi-monthly, by the New Mexico Society of Architects  
 American Institute of Architects, a non-profit organization, 1030  
 San Pedro Drive, N.E. Suite 27, Albuquerque, N. M. 87110

**Editorial Correspondence:** All correspondence should be addressed to  
 John P. Conron, P. O. Box 935, Santa Fe, New Mexico 87501.

**Editorial Policy:** Opinions expressed in all signed articles are those  
 of the author and do not necessarily represent the official position  
 of the New Mexico Society of Architects, A.I.A.

No responsibility will be assumed by the editor or publishing organ-  
 ization for unsolicited contributions. Return postage should accom-  
 pany all unsolicited manuscripts.

**Subscription rates:** single copy 50c; one year \$2.50. Second class  
 postage paid at Roswell, New Mexico.

**Change of address:** Notifications should be sent to N.M.A., Box 18,  
 University Station, Albuquerque, N. M. 87106 at least 45 days prior  
 to effective date. Please send both old and new addresses.

**Advertising:** Requests for rates and information relating to adver-  
 tising should be addressed to W. M. Brittelle, Sr., 1030 San Pedro  
 Drive, N. E. Suite 27, Albuquerque, N. M. 87110

## NEW MEXICO SUPPLY CO.

101 Industrial Ave. N.E.

Phone 344-2346

(Off of 4100 Block Edith N.E.)

## ANNOUNCES



The one stop for home designers, home builders and home  
 buyers to select floor coverings, light fixtures, cabinet tops,  
 custom interior equipment.

- AMTICO LUXURY VINYL • BURKE FLOORING
- JOHNS-MANVILLE FLOORING
- LIGHTCRAFT of CALIFORNIA • VIGON LIGHTING
- PROGRESS LIGHTING • RUBEROID FLOORING
- WILSON ART PLASTIC LAMINATES
- NUTONE INTERCOMS AND STEREO

Members C. S. I.

## INDEX TO FIRMS

Cooperating in the public relation program of the NMA maga-  
 zine, making possible its publication and the page upon which  
 their message may be found.

Albuquerque Gravel Products .....	4
Albuquerque Lumber Co. ....	4
Albuquerque Testing Laboratory .....	19
Architectural Carpet Consultants .....	7
Atlas Building Products Co. ....	5
B and B Steel .....	22
Builders Block & Stone Co., Inc. ....	7
Crego Block Co., Inc. ....	2
Design Interiors .....	5
Featherlite Tile Company .....	4
Frontier Roofing Co. ....	23
Hanley Paint Mfg. Co. Inc. ....	23
Hunter-Hayes Elevator Co. ....	6
Hydro Conduit Corp. ....	24
Keyson Applied Coating, Inc. ....	14
Lath and Plaster Supply Co. ....	14
Lumber Merchandisers Association .....	21
Manzano Quartz, Inc. ....	19
McGill, George B. ....	21
New Mexico Marble and Tile Co. ....	20
New Mexico Pipe Trades .....	4
New Mexico Supply Co. ....	22
Otto, Edgar D. & Sons, Inc. ....	14
Prestressed Concrete Products, Inc. ....	20
Southern Union Gas Company .....	21
Southwest Vermiculite Co. ....	23
Stryco Sales, Inc. ....	20
University Book Store .....	8
Whiting Co., Inc., Donald G. ....	6



OUR 32ND YEAR CLIMATE DESIGNING  
PAINT FOR THE SOUTHWEST

HANLEY'S *and the*



ARCHITECTURAL PAINTS  
FOR BEAUTY AND  
PROTECTION

TECHNICAL COATINGS FOR  
PROTECTION — FUNCTION  
AND BEAUTY.

SUNFOE  
AMBASSADOR



HANLEY PAINT MFG. CO., INC.

EL PASO, TEXAS  
PH. 532-6921

LAS CRUCES  
NEW MEXICO  
PH. 523-1222

ALBUQUERQUE  
NEW MEXICO  
PH. 265-1524

*Roofing and Sheetmetal Contractors*



711 WHEELER AVE. S.E. TEL. 243-3788  
ALBUQUERQUE, NEW MEXICO 87119

## New Zonolite® fire-rated constructions can save you thousands of dollars on your next building!

With Zonolite's specifications, it is a simple matter to select the lightest, most inexpensive fire-rated constructions appropriate to your building design.

The rated systems cover every aspect of building where fireproofing is needed: girders, beams, columns, roof decks, walls, floors, and ceilings. New lightweight composite steel floor and composite beam assemblies are included.

Although many of these recent, rated assemblies are not known to the entire industry as yet, they have already been responsible for cutting millions of tons of unnecessary weight from existing buildings, and millions of dollars of unnecessary construction costs.

As you will quickly see, they can reduce total building weight and costs for you, too, while giving your buildings total fire protection.

For complete information,  
burn along dotted line and  
mail coupon  
today.

Zonolite Division, W. R. Grace & Co.

**GRACE** Merchandise Mart Plaza  
Chicago, Illinois 60654

Gentlemen: Please send me complete information on Zonolite's Total Fire Protection the Lightweight, Inexpensive Way. I am particularly interested in fire-rated assemblies for:

\_\_\_\_\_  
(name of job)

NAME \_\_\_\_\_

TITLE \_\_\_\_\_

FIRM \_\_\_\_\_

ADDRESS \_\_\_\_\_

CITY \_\_\_\_\_ STATE \_\_\_\_\_ ZIP \_\_\_\_\_

MAIL TO—Southwest Vermiculite Co.  
5119 Edith Blvd, N.E.  
Albuquerque, N. M. 87107



Library  
University of New Mexico  
Albuquerque, N. M. 87106

Bulk Rate  
U. S. Postage  
**PAID**  
Roswell, N. M.  
Permit No. 47



## CONCRETE THE PEACE OF MIND MATERIAL

THE TOWN & COUNTRY ANIMAL CLINIC IN ALBUQUERQUE IS A GOOD EXAMPLE OF THE TASTEFUL USE OF PRESTRESSED CONCRETE DOUBLE TEE, AND SINGLE TEE ROOF CONSTRUCTION. NEVER A WORRY ABOUT ITS LASTING QUALITIES . . . NEVER A MAINTENANCE PROBLEM.

YOUR NEEDS IN CONCRETE  
PRECISION ENGINEERED  
AND FABRICATED BY  
HYDRO CONDUIT CORPORATION.

ARCHITECT — ROBERT C. WALTERS  
CONTRACTOR — EVERETT CONSTR. CO.



**HYDRO CONDUIT CORPORATION**

2800 SECOND ST., SW • ALBUQUERQUE, NEW MEXICO 87103