

Fine Arts  
720.5  
N4195  
v.9  
no. 11-12

# new mexico architecture



november-december 1967 50c



# concrete

ONE OF A SERIES

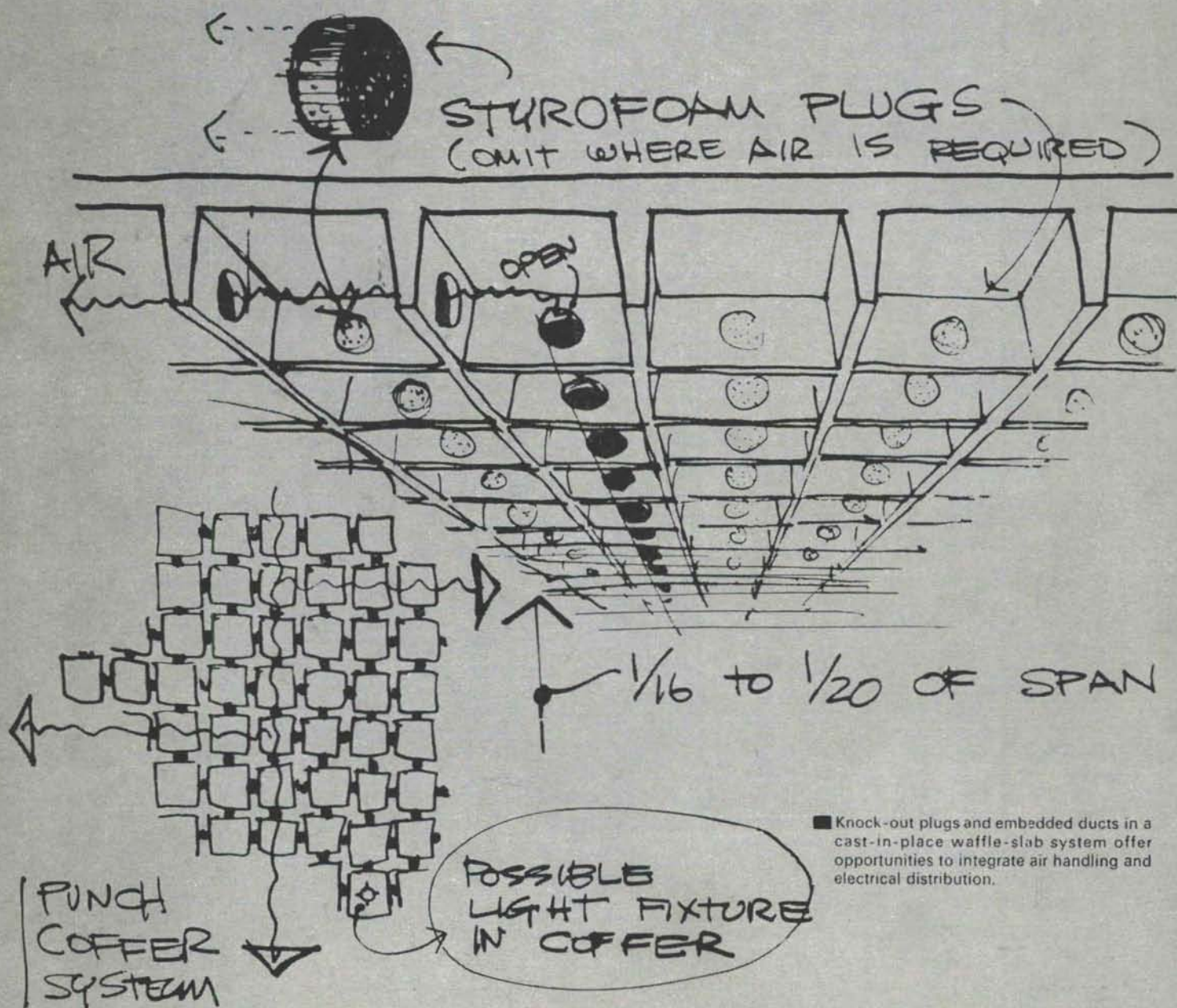
## stimulus to broader design thinking in SYSTEMS BUILDING FOR SCHOOLS

In systems building, as in any departure from traditional ways, concrete offers the architect unequalled opportunity.

By its very nature, the material is ideally suited to the systems approach. It permits wider design latitude and infinite

aesthetic variations to relieve standardized structural forms.

Innumerable architects, shaping concrete to new ideas on sketch paper, are broadening the systems concept to meet the needs of industrialized techniques.





## ONE IDEA LEADS TO ANOTHER

It's hoped that the random thoughts sketched out on these pages will spark ideas for you

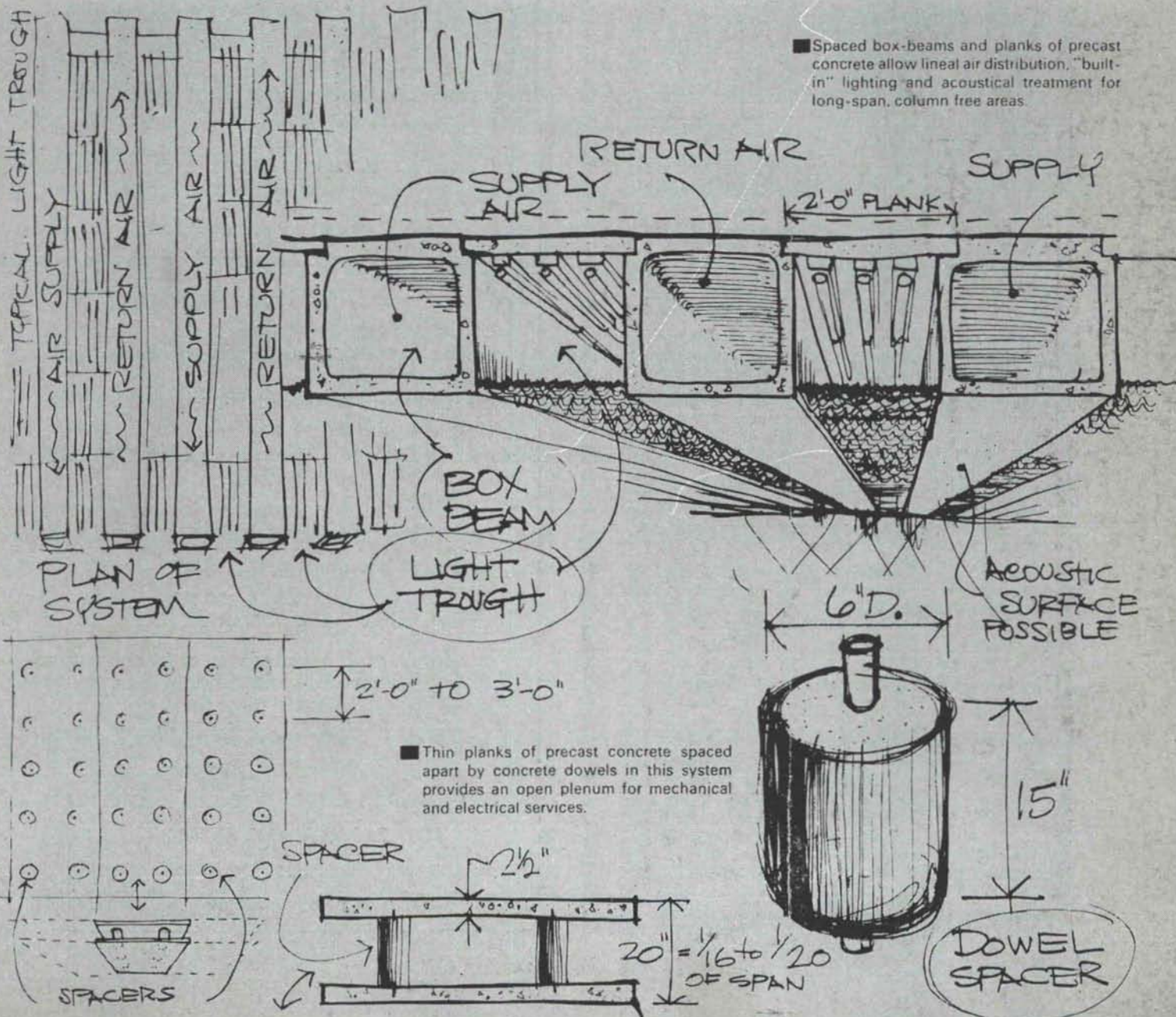
In exploring the potential of systems building with concrete, you'll find PCA can help . . . through its technical literature and its nationwide staff of architects, engineers and specialists. Call the PCA office nearest you, or write for additional information.



**PORTLAND CEMENT ASSOCIATION**

Suite 705—5301 Central N.E., Albuquerque, N.M. 87108

An organization of cement manufacturers to improve and extend the uses of portland cement and concrete.





# FROM CONCEPT TO COMPLETION



Exclusive distributors for **DATA CASE** and **WEBER FLOORING**

## Consultation Planning Design Layout

For your inspection we offer this Computer Package, consisting of a key punch console, chair and raised floor. This marvelous floor allows you to run all computer, air conditioning and humidifier cables under the floor, giving a clean, spacious appearance to your working area. Let us tell you more about how this computer package can increase efficiency as well as enhance your surroundings.

\* By the way, we also have all types of card and tape files and storage equipment for all computer accessories.

Architects use our design consultation services for:  
Science Labs / Offices / Artrooms / Dormitories /  
Libraries / Auditorium Seating / Home Economics  
Labs / Gymnasiums

## UNIVERSITY BOOK STORE ALLIED SUPPLY CO.

2122 Central, SE  
Phone 243-1776  
Albuquerque, N. M.

## ANNOUNCING GALLERY '68 by RIO GRANDE



## STEEL PRODUCTS Co.

Homeliving Ideas and Designs  
of the Future . . . On Hand *Today*

- ★ Modular Cabinets (with paint impregnated)
- ★ Celotex Ceilings
- ★ Celotex Prefinished Paneling
- ★ Decorene Plastic Decorator Panels
- ★ Aztec "Space-Age" Ceramic Fireplaces
- ★ Masonite Panel Siding
- ★ Alenco Single Hung Aluminum Windows
- ★ DeVille Marbled Shower Floors
- ★ Bath Fixtures
- ★ Showerfold Tub & Shower Enclosures  
(some are even gold anodized)
- ★ Davis Ornamental & Decorative Irons
- ★ Windsor Overhead Garage Doors
- ★ Frigidaire Appliances & Built-Ins

**In short,** Rio Grande steel's home building supply department can furnish functional assistance during design and construction. Gallery '68 is open for your inspection.

## Rio Grande Steel Products Co.

7100 2nd NW 345-2611

- ★ By the way, we also fabricate and sell steel here.

# nma

vol. 9 • nos. 11 and 12 • nov. - dec. 1967 • new mexico architecture

N. M. A. News	9
The Department of Architecture at UNM Immaculate Heart of Mary Church for Los Alamos	
The Santa Fe Opera Burns, But . . .	13
San Pedro Branch Library	17
A Small Office Building Joe Boehning, Architect	21
N. M. A. News (continued)	23
AIA National Conference Bunting named to Museum Board New Mexico Board of Examiners for Architects AIA Slide Competition Betty Thompson Receives Award Garden of the International Center UNM CSI to Establish Research Center	

(Cover — San Pedro Branch Library)

— Official Publication of the New Mexico Society of Architects, A. I. A. —

## Society Officers

President—Robert Mallory  
Vice-President—Kenneth Clark  
Secretary-Treasurer—Beryl Durham  
Director—Van Dorn Hooker  
Director—Albert S. Merker  
Director—James Murray  
Director—Don L. Oschwald  
Director—John Reed  
Director—James Voll

## Commission for NMA

Bainbridge Bunting)  
John P. Conron) Co-Editors  
W. M. Brittelle, Sr.—Advertising  
Van Dorn Hooker—Circulation  
Albert Merker  
Robert Mallory  
John McHugh  
James Murray  
John B. Reed

## CLINTON P. ANDERSON AGENCY INC.

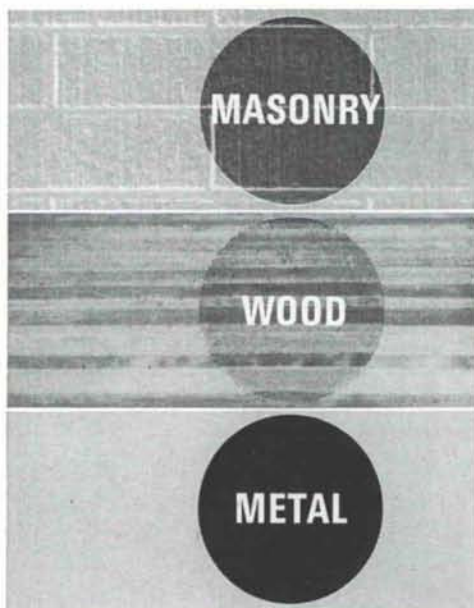
215 5th St. S.W. (505) 243-5664

Albuquerque, N. M. 87101

### Flex-tile

An outstanding new two component coating that actually out-performs baked enamels for hardness, gloss, resistance to water, chemicals and stains

MAY BE  
APPLIED  
BY BRUSH,  
SPRAYER  
OR ROLLER



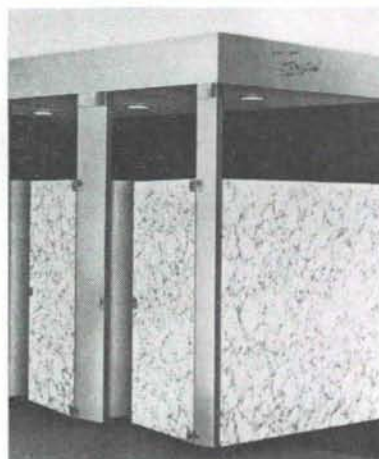
Another Quality  
Product of . . .



2714 4th St., N.W.  
P.O. Box 6086  
Albuquerque,  
New Mexico



### TOILET COMPARTMENTS



- Endless design and pattern possibilities
- Durable, easy to maintain
- Assured local availability ceiling hung, floor mounted or overhead braced

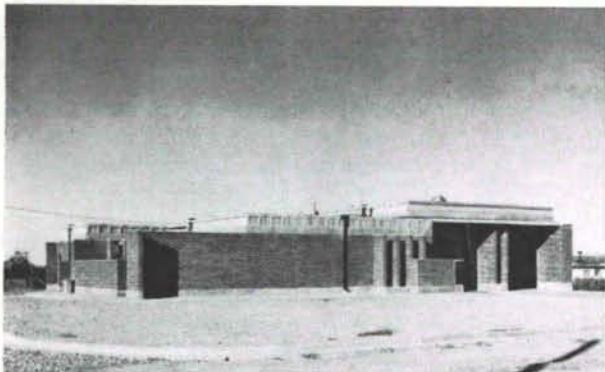
Formica Brand Laminated Plastic is the ideal surfacing material for toilet compartments and other restroom partitions, for the same reason it serves so handsomely on surfaces in other parts of a building.

FORMICA DISTRIBUTOR



PHONE 233-2317  
312 INDUSTRIAL, N. E. P. O. BOX 1098  
ALBUQUERQUE, NEW MEXICO





Practical application of the most fire resistant roof. 48" wide prestressed concrete double tees for the Agua Fria Fire Station, Santa Fe, N. M. This building is accented with striated surface end filler panels.

Architect — Urban Weidner, A.I.A.  
Contractor — Douglas Construction Co.

1900 MENAUL ROAD N. E., ALBUQUERQUE, NEW MEXICO 87106



**PRESTRESSED CONCRETE PRODUCTS, INC.**  
MANUFACTURERS OF ROOF AND FLOOR DECKS

THEY EXCEL IN

- ECONOMY • PERMANENCY • DURABILITY
- VERSATILITY • FLEXIBILITY
- and most important • FIRE RESISTANCE

(505) 345-2536

## EPOXY TERRAZZOS

THE REVOLUTIONARY  
HIGH QUALITY  
FLOOR COVERING

## EPOXY TERRAZZOS

ARE THE MOST BEAUTIFUL AND FUNCTIONAL FLOOR COVERING YET DEvised. SEAMLESS, GROUND IN PLACE TERRAZZO FLOORS GIVE EVERLASTING WEAR, EASE OF MAINTENANCE AND COLOR AND DESIGN VERSATILITY.

EPOXY TERRAZZO FLOORS ARE NOW AVAILABLE IN CONDUCTIVE FORM FOR USE IN HOSPITAL OPERATING ROOMS OR EXPLOSIVE HAZARD AREAS.

LET US TELL YOU  
THE EXCITING STORY

**NEW MEXICO  
MARBLE AND TILE CO.**

414 Second St., S.W. Albuquerque, N. M.  
P. O. Box 834 • Phone 243-5541

## ALBUQUERQUE TESTING LABORATORY

Sub-soil Investigations  
For Structural and Dam Foundations

Two Drills and Crews now  
available for Prompt Service

Laboratory Analysis and  
Evaluation of Construction Materials

All work done under the supervision  
of Registered Professional Engineers

532 Jefferson St., N.E. — P. O. Box 4101  
Phone AL 5-8916 Albuquerque  
Phone AL 5-1322 New Mexico



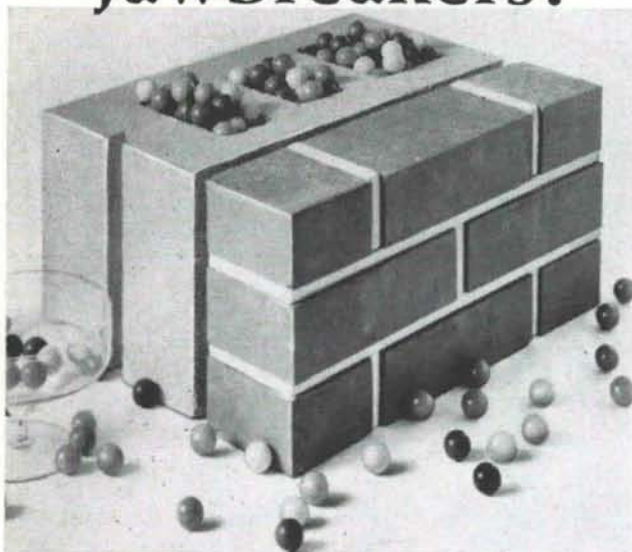
**SOUTHWESTERN ELECTRIC SHOP, INC.**  
Electrical Contractors

• • • • •  
ARVILLE SULLINS  
Manager

914 N. Linam  
393-3343

Hobbs, New Mexico  
88240

# Use *something* to insulate cavity and block walls. How about jawbreakers?



Whenever the temperature differs on the inside and outside of these walls (that's all the time), convection occurs in the cavities. The more different the temperature, the bigger the wind in the voids. The wind carries therms from the side where you want them to the side where you don't. These walls are as good as—or better—than other kinds of walls. But like all walls, they need insulation. Without it the occupants are as miserable as the heating and air conditioning bills.

## **Zonolite® Masonry Fill Insulation: better than everything**

Zonolite Masonry Fill Insulation was developed specifically for these kinds of walls. It doubles their insulation value; a real boon to mankind. Keeps inside wall temperatures comfortable and the heating and air conditioning bills easy to take.

Zonolite pours right into the voids, fills them completely, never settles. It is water repellent; any moisture that gets into the wall drains down through it and out.

Cost: as low as 10¢ per square foot, installed.



Southwest Vermiculite Co.  
5119 Edith Blvd. N.W. Albuquerque, N. M.  
87107

### **Gentlemen:**

Somehow using jawbreakers doesn't sound like a good solution to the problem of insulating masonry walls. Send me Zonolite Masonry Fill Insulation Folder No. MF-83, with complete technical data and specifications.

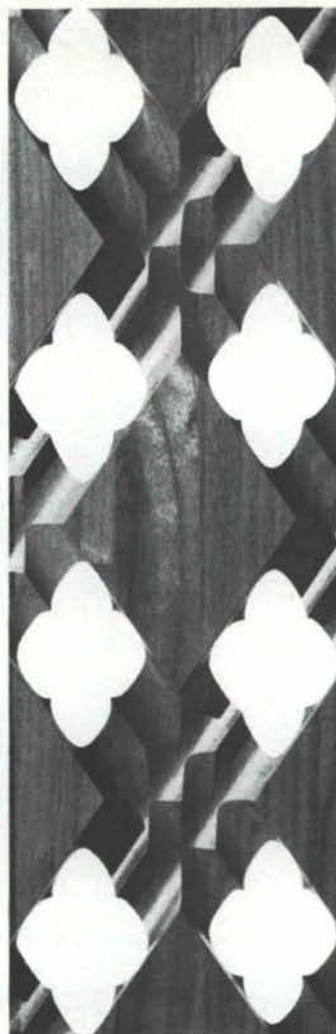
NAME \_\_\_\_\_

TITLE \_\_\_\_\_

FIRM \_\_\_\_\_

ADDRESS \_\_\_\_\_

CITY \_\_\_\_\_ STATE \_\_\_\_\_ ZIP \_\_\_\_\_



## **Elegance**

is radiated in carved wood by Customwood. Expressively designed in the finest grains of hardwood, Customwood panels, grilles and doors are the focal point of any interior. Write for your personal catalog, price list and samples.

*Customwood*

**MANUFACTURING COMPANY**

3620 High Street, N.E.  
Albuquerque, New Mexico  
87107

See SWEETS 1967 2C/CU  
(1966 5C/CU)



## THE DEPARTMENT OF ARCHITECTURE AT UNM RECEIVES ACCREDITATION

The Department of Architecture has been accredited by the National Architectural Accrediting Board. Now in its 10th year, the Department joins about 70 other schools in the nation so recognized.

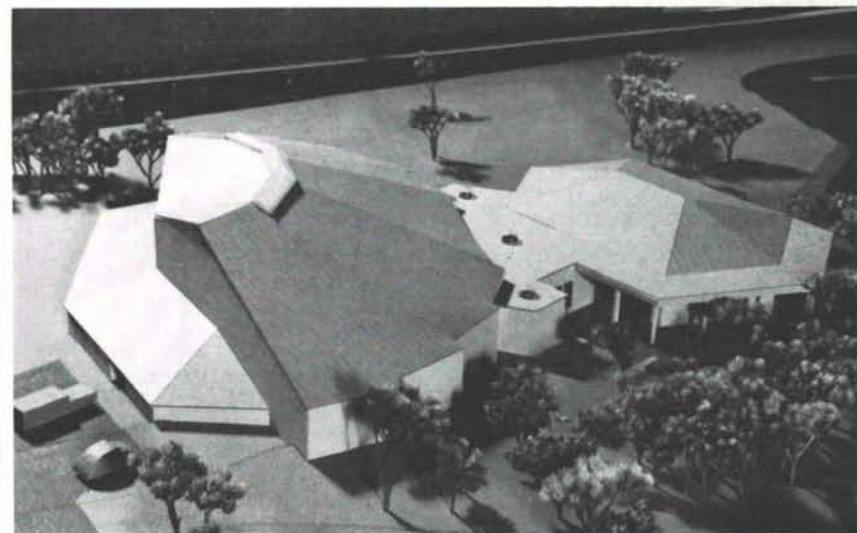
Dean Sam T. Hurst, of the School of Architecture and Fine Arts at the University of Southern California, headed the visiting committee and noted five major strengths: support from the local profession and alumni; the new physical facilities at Stanford and Central SE; the new six-year curriculum; the leadership of Chairman Thomas R. Vreeland Jr.; the wide variety of educational backgrounds provided by the faculty.

The Architecture Department has an enrollment of 120 majors and a faculty of eight. It is currently changing over to a six-year curriculum to permit additional coverage of general and professional subjects and expects to produce the first graduates of the extended program in 1971.

Under the leadership of Joe Boehning, a graduate of the Department and a member of the executive committee of the Alumni Association, a strong friends of architecture group has been organized to provide financial support for scholarships.

## IMMACULATE HEART OF MARY CHURCH FOR LOS ALAMOS

Now under construction is the Immaculate Heart of Mary Catholic Church at Los Alamos, New Mexico, birthplace of America's atomic capability. The church, was designed by Jesse A. Pacheco, Jr., A.I.A., Pacheco and Graham, architects, Albuquerque, N.M. The church plan was submitted to the 27th National Conference on Religious Architecture in San Francisco in 1966 and was chosen to be one of eleven buildings of some 250 considered to have plans and speci-



fications circulated on a tour of the entire United States. According to Architect Pacheco the church was designed in keeping with the dictates that evolved from Vatican II.

The church is unusual in several respects in that it features conference rooms for confessionals, has a 3000 volume library and a baptismal font that is a true fountain. There is indirect and direct lighting primarily via a skydome in the roof. Basically fan-shaped, the church will seat a congregation of 725 and is set in a grove of over 200 Ponderosa pine trees with foot paths and conversation benches for parishioners.

An integral part of the church's design is the huge laminated Douglas Fir beams that form the main supports for the vaulted roof. There are over 100 tons of laminated wood products in the building with four main beams being the most spectacular. They each are 76 feet long and weigh 12,500 pounds. Those beams presented no end of problems in transport. Born on the drawing boards of Weyerhaeuser Laminated Wood Products Division in Tacoma, Washington, they were fabricated at the Weyerhaeuser plant in Cottage Grove, Oregon and shipped via rail to Albuquerque Lumber Company, Weyerhaeuser architectural specialty dealer for New Mexico.

The regional estimator for Weyerhaeuser in Tacoma describ-

ed the church as most unique and unusual in design, commenting that there were an unusually large number of bevels and mitering called for in the fabrication, and considered this use of laminated beams to be certainly one of the largest in church construction.

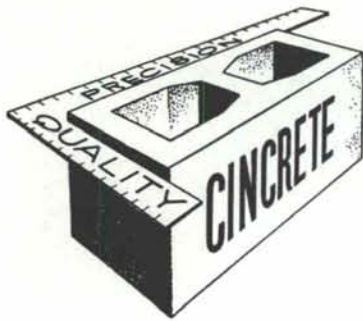
Upon arrival at the building site in Los Alamos, the huge beams were set in place by the construction division of Southwestern Transfer Co. for Architectural Construction Co. of Albuquerque, N.M., general contractor on the job. Co-ordinating the progress of the concrete and masonry phases of the job so as to be ready for the arrival of the beams was ably handled by Rolland Feight, owner and manager of Architectural Construction Co.

R. M.



More  Page 23





Serving Southwestern New Mexico  
and El Paso with  
**Quality Concrete Masonry Products**  
and many allied building materials



*Hollow Metal Doors and Frames*

*Wood and Plastic Folding Doors*

*Commercial Hardware*

*Reinforcing and Fabricated Steel*

*Residential and Commercial Steel and Aluminum Windows*

**Builders Block & Stone Co., Inc.**

**Builders Block & Supply Co., Inc.**

P. O. Box 1633

Roswell

El Paso

P. O. Drawer FF

Las Cruces

622-1321

532-9695

524-3633

Members of New Mexico Concrete Masonry Assn. and National Concrete Masonry Assn.

## WOOD is WARM and WONDERFUL!

### MEMBERSHIP:

ALBUQUERQUE LUMBER CO.

BALDRIDGE HOME SUPPLY CENTER

GIBSON LUMBER CO.

HOME BUILDERS SUPPLY CO.

BOSQUE FARMS LUMBER CO.

SANDIA LUMBER CO.

SHOFNER LUMBER CO.

APACHE LUMBER CO., INC.

FIR PINE LUMBER CO.

GEORGIA-PACIFIC CORP.

U. S. PLYWOOD CORP.

SAGEBRUSH SALES CO.

WEYERHAEUSER

DUKE CITY LUMBER CO.

NEW MEXICO TIMBER INC.

These are the experts on wood and wood products to contact  
for information and consultation . . . members of



**LUMBER MERCHANDISERS ASSOCIATION**

**ALBUQUERQUE, NEW MEXICO**



**"It resulted in a good savings over our estimate . . ."**

And then —

"We would like to thank you for the prompt delivery of our Trus Joists. In fact, they were earlier than needed and we always appreciate good service. My real reason for writing this letter is to express our delight in the ease of installation and the speed with which our crew installed them."

So stated Mr. Roger Smith of General Builders, Inc., Albuquerque in the construction of the Eastern Baptist Church.

We wouldn't add a thing . . . just ask the man who's tried them.

Architects:

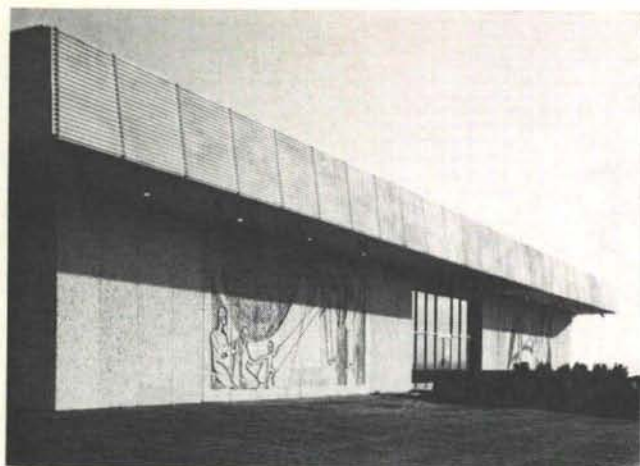
Pacheco & Graham  
Albuquerque



**George B. McGill**

1113 Pennsylvania, Northeast  
Albuquerque 505/256-2058





## NEW CAPABILITY and VERSATILITY

Exposed aggregate precast concrete panels and shapes were never offered in such variety and quality consistency as are now being produced on Otto's new high production impact table facilities. When planning a building that could be enhanced by precast panels, call the consultants at Edgar D. Otto & Son, Inc.

Shown — Gate of Heaven Mausoleum — Albuquerque  
Architect — La Grove & Perkins,  
Assoc. Architect, James S. Liberty

**EDGAR D. OTTO & SON INC.**

**243-6721**

2700 2nd St. S.W. Albuquerque, New Mexico 87103

## KINNEY BRICK COMPANY INC.

### Manufacturers of:

- Common Brick
- Patio Brick
- Face Brick
- Roman Brick
- Norman Brick
- "SCR" Brick

### Distributors for:

- Acme Brick Co.
- Major Brick Co.
- Eureka Brick Co.
- Texas Clay Products
- Alamo Clay Products
- • • • •

Samples and information upon request

Visit Our Office & Showrooms at Plant  
5 miles South just off of Second Street  
ALBUQUERQUE, NEW MEXICO

Phone 877-4550 P. O. Box 1804, 87103



*Direct Factory Dealers for*

**LENNOX**

*Heating and Air Conditioning*

Readily available for your information and/or use are complete specifications along with Technical data for the Heating and Air Conditioning requirements of your project.

Just call **345-2416** for **Ed Miller** at Miller Metal Company or the territory manager for **LENNOX**, **Bob Vetterman** at **345-2416** for an appointment.

4538 McLeod N.E.

Albuquerque, N. M. 87109



## AUTOMATIC COOKING?

if you want the job done right  
...do it with gas

**SOUTHERN UNION GAS COMPANY**



Polk Junior High School  
Wm. W. Ellison & Associates, Architects

Albuquerque, New Mexico  
C. H. Taylor, General Contractor

## GO MODERN

Exact Discipline and add dignity to your project

Mr. Architect you too can go modern and still maintain the contemporary in Southwestern Architecture in the use of Slump Block.

Slump Block, a material that surpasses ASTM, U-1 Specifications.

Crego Block Company was the first to produce Slump Block in New Mexico, it should follow then that we have the best.

## CREGO BLOCK CO., INC.

6026 Second St. N.W.

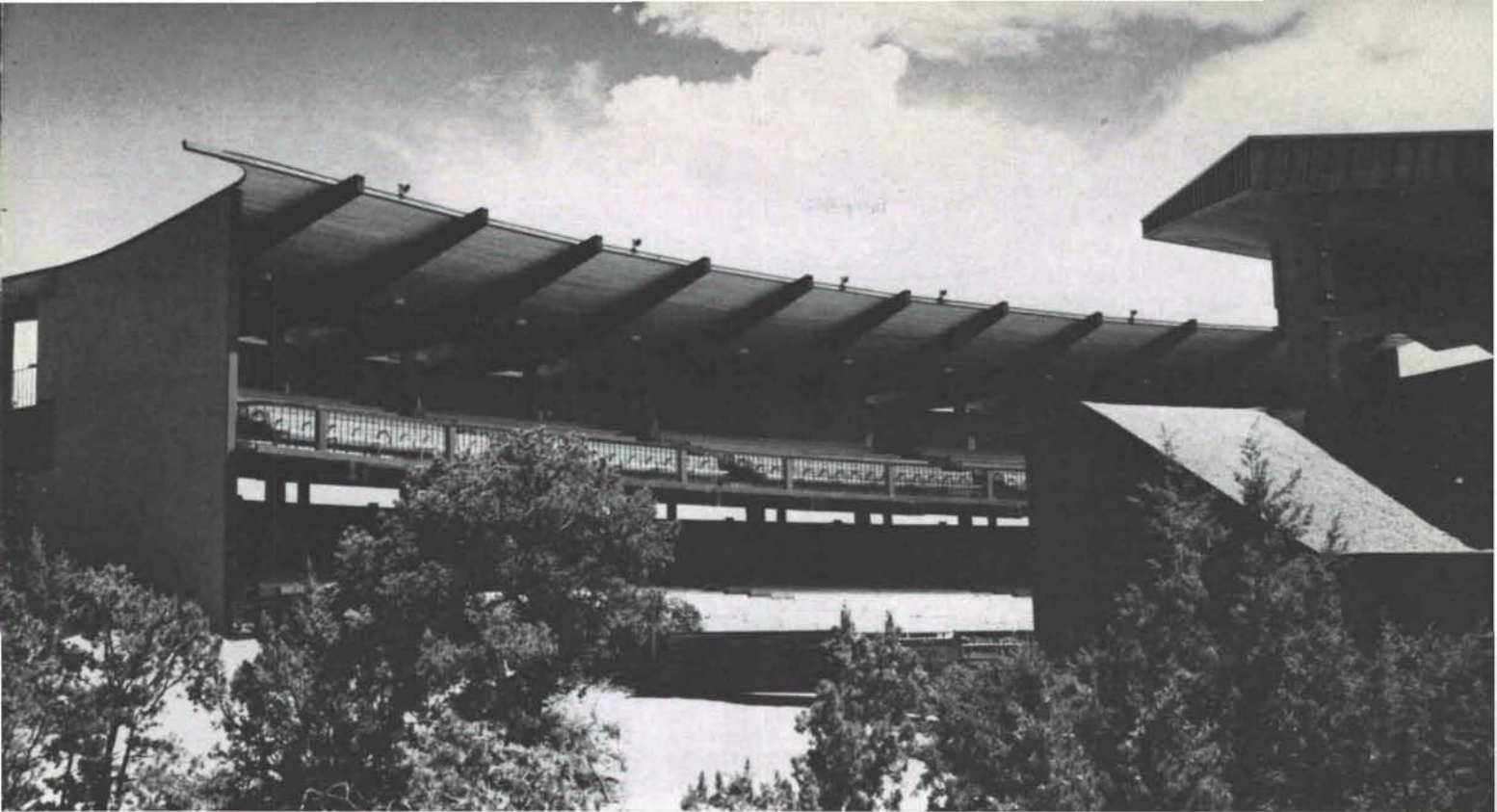
Phone 344-3475

Albuquerque, N. M. 87107



The  
Santa Fe  
Opera  
Burns

But.....



*Before . . . .*

*. . . . and after*

On July 27, 1967 the Santa Fe Open Theatre was completely destroyed by fire. The blaze began at approximately 3:30 A.M. Of undetermined cause, the fire started under the stage and quickly spread throughout the structure.

The theatre was published in *New Mexico Architecture* in the September - October, 1965 issue. The original structure was selected as one of the best examples of contemporary architecture in New Mexico, and was shown in the traveling exhibition: *Architecture in New Mexico*, 1959.





The balcony steps of the Santa Fe Opera Theatre, left standing after the July 27th fire, now lead somewhere: to the New Opera Theatre, if only in an architect's model made of posterboard and balsa wood.

Made by Dick Clark of the architectural firm of McHugh and Kidder, the model is built to the scale of  $\frac{1}{8}$  of an inch to the foot. McHugh and Kidder also designed the first Opera Theatre, built in 1957, and the balcony-loggia, added in 1965.

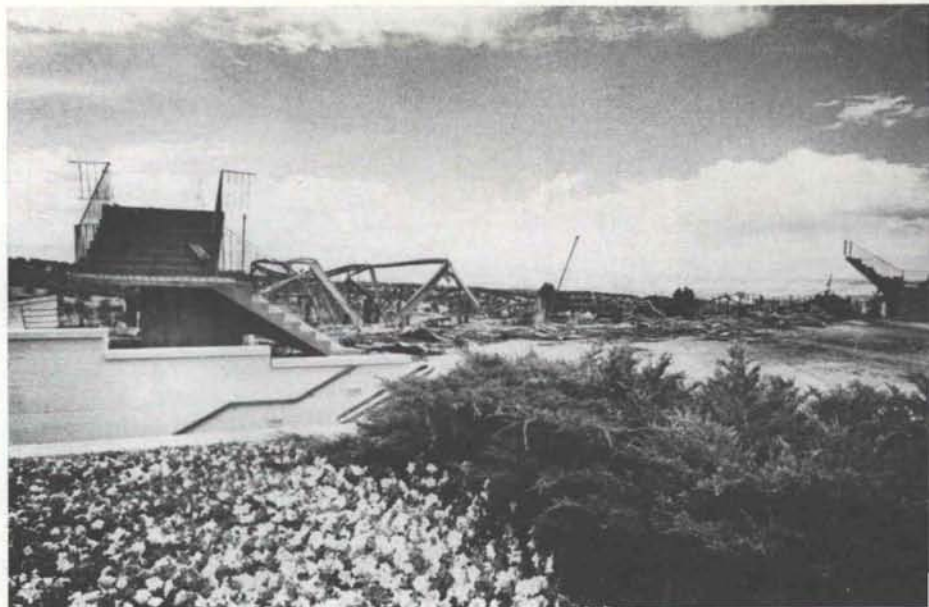
To be built on the same site, the new open air amphitheatre retains much of the old theatre's basic design, in the sweep of the cantilevered balcony, the same essential proportions of the stage house, even with increased dimensions and the intimacy of the old theatre. But the new facility is greatly expanded, both in audience and stage area.

The old theatre was completely timbered in construction, with most of the exposed wood in red wood. Wood will be used only as accent in the new, with a basic masonry construction. The stage house will be completely fire resistant, and will be further protected by an intricate sprinkler system.

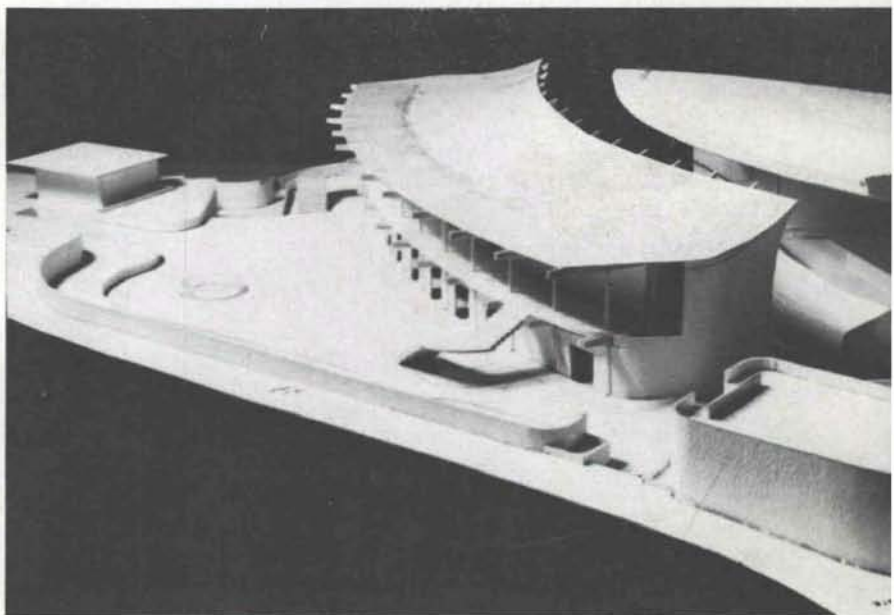
With the extension of the stage house canopy and balcony roof, the new design allows for more coverage of the audience, with only six rows of seats "under the stars." The sweep of the canopies, however, preserves the open air atmosphere of the old theatre. The open ended stage still affords the audience the view of the Jemez Mountains, with the lights of Los Alamos twinkling in the distance.

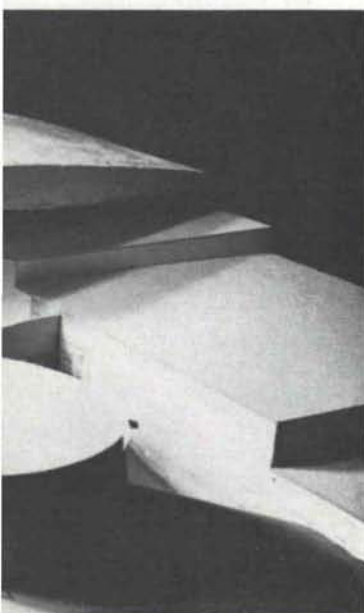
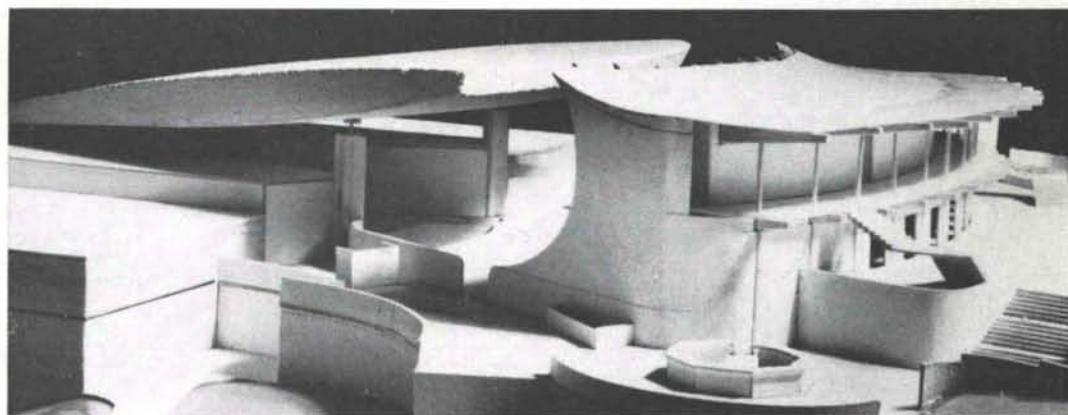
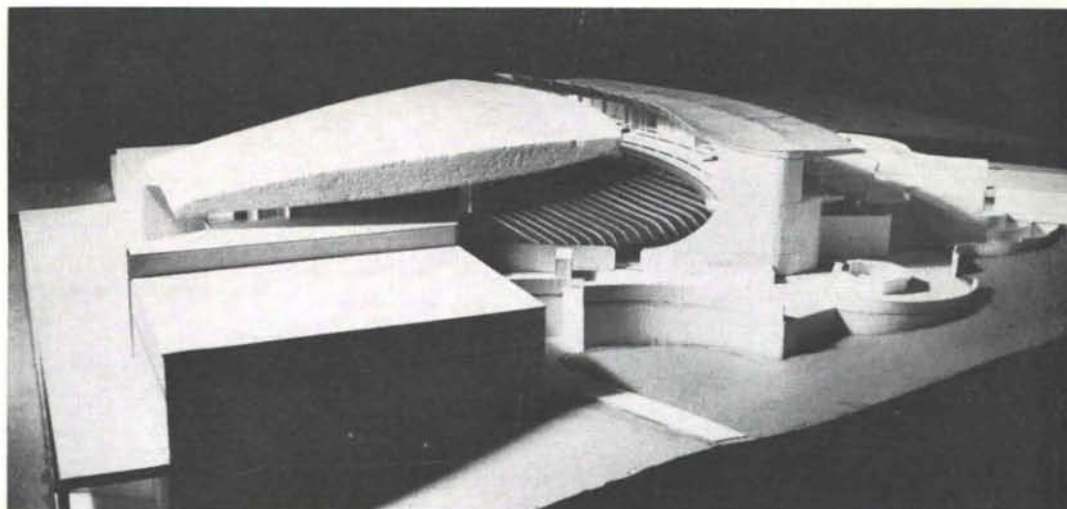
Greatest innovations will come in the back stage area, which in the old theatre provided no storage space for sets and a bare minimum for costumes and props, inadequate space for set and costume construction, and over crowded dressing rooms.

There will be a rise of 38 feet from the lowest level of the backstage complex to stage



## Begins Anew With Expanded Designs





level, providing three stories for costume, sets, properties and electrical shops. Dressing rooms will be at stage level. The dimensions of the paint shop, with a 20 foot ceiling, will allow two complete sets to stand upright for painting — which was formerly done — and redone if it rained — on the back road of the theatre.

The design also calls for four hydraulic lifts. The main stage lift, 22 feet by 18 feet, with a 38 foot rise, can be used for hauling scenery from the lowest level, where it is constructed and painted, to stage level for assembling. The lift can also act as an extension of the stage. The back stage steps will swing out to accommodate the lift, as well as providing an escape when the lift is utilized in scenic design, or the steps may be tucked under the stage house itself. As well as saving many man hours of labor, the lift will give a

greater flexibility to staging.

Two smaller lifts, stage right and left, will be used for transporting costumes and props from construction rooms to stage level.

The fourth lift will be a lift for the orchestra pit, with an eight and a half foot rise. The flexibility of the levels will afford the audience greater visibility of the musicians, depending upon the size of the orchestra dictated by the score.

The back-stage complex will also house an instrument storage room, the orchestra music library and three music practice rooms.

The fan shaped stage house canopy measures 126 feet from front to back, as compared with the old octagonal roof with its 61 foot lepth. 97 tons of structural steel will go into the trusses, roof and floor deck. The interior fly space within the canopy measures approximately six feet in



height, to accommodate lighting instruments, crews, and the space to fly small scenery. A concrete cover will surface the steel.

Whereas the old theatre seated 1221 at the time of the fire, the new facility can accommodate 1500, without changing the 90 foot distance from back of house to stage lip. There will be four main aisles, with staggered "continental" seating — wide aisles between each horizontal row — to permit greater audience comfort and increased visibility. Theatre type self-rising seats of "Dexlon" plastic will replace the former wooden benches.

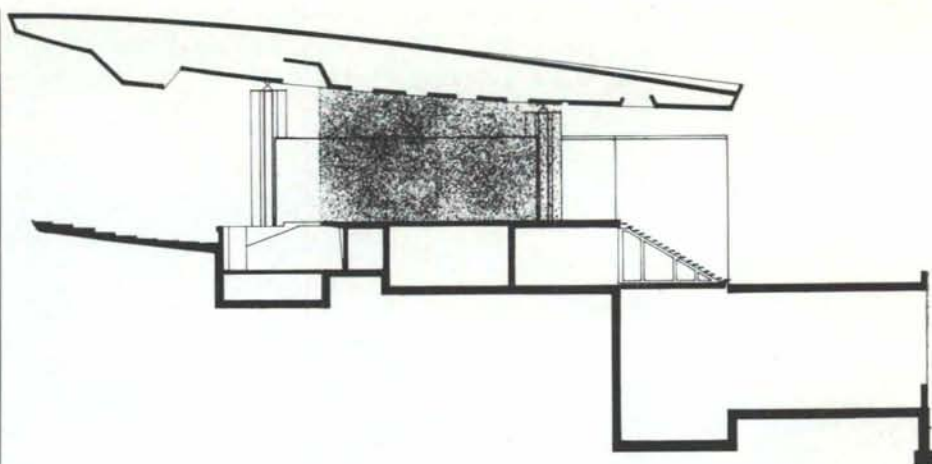
On the north side of the garden a semi-open air lounge, with lavatories and bar, will act as a baffle to occasional highway noise. The octagonal bar, on the lower level of the garden, escaped the fire, as did the new concrete paving, which needed only sand blasting to restore it.

The size of the stage itself is increased, both in depth and width, while retaining the same basic design of the old. 16 additional feet have been added from back stage edge to stage lip. Wing space, almost non-existent in the old theatre, will allow for a greater variety of scenic devices. The stage floor will be wood on concrete, and will have a central trapped area under the stage for special effects, such as "mysterious appearances and disappearances."

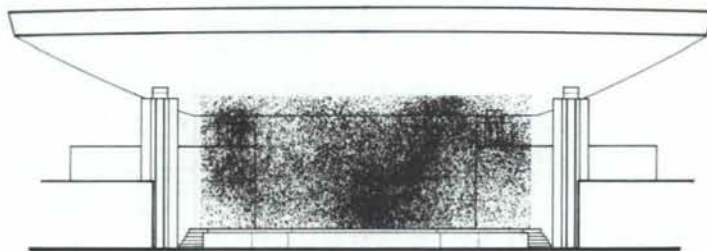
The orchestra pit is slightly expanded as well, containing approximately 1200 square feet, enough to accommodate 80 musicians.

The opera hill site at present looks very much as it must have in the early spring of 1957, with the slope graded and dotted with wooden forms for the pouring of concrete footings. There is a difference, however: the balcony steps. Now, instead of leading nowhere, they are the steps of the once and future Santa Fe Opera Theatre.

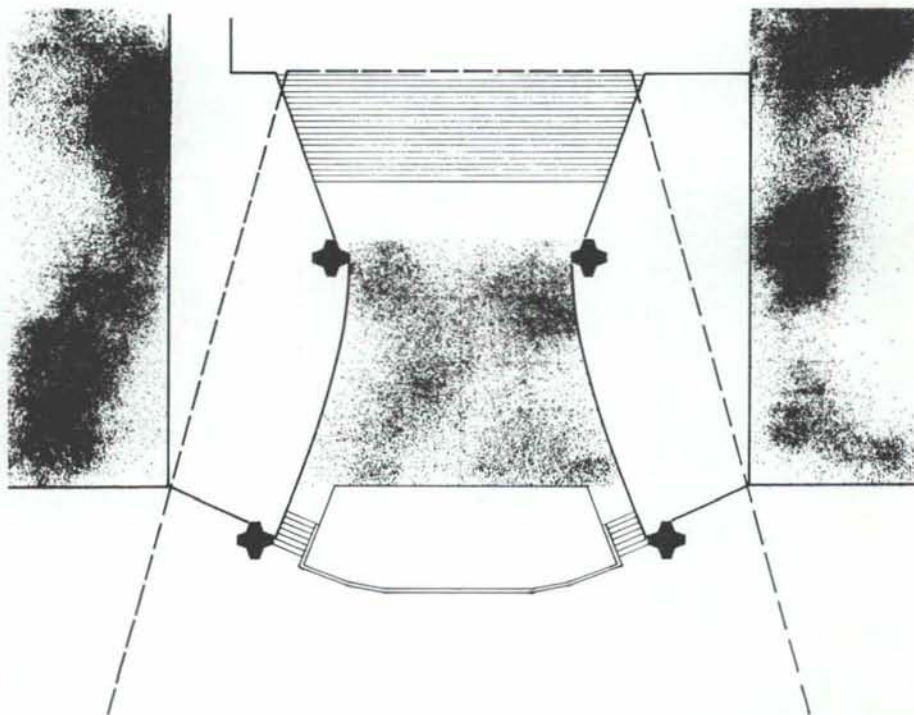
—John MacGregor



*Section through new stage*

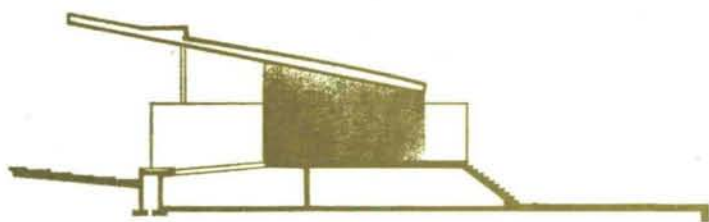


*Elevation of new stage*



*Plan of new stage*

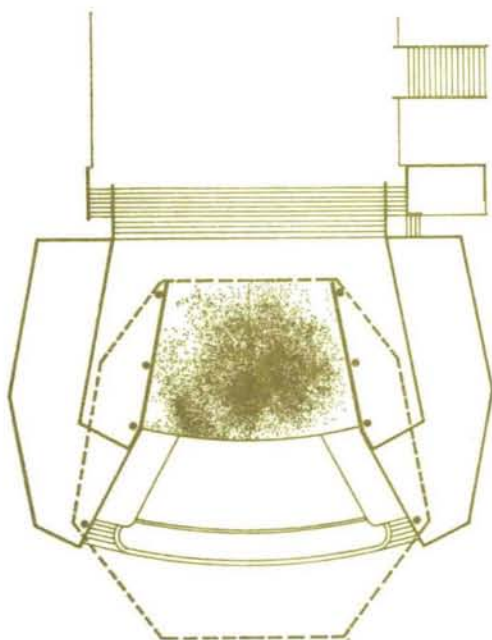
Architects—McHugh and Kidder



*Section through old stage*

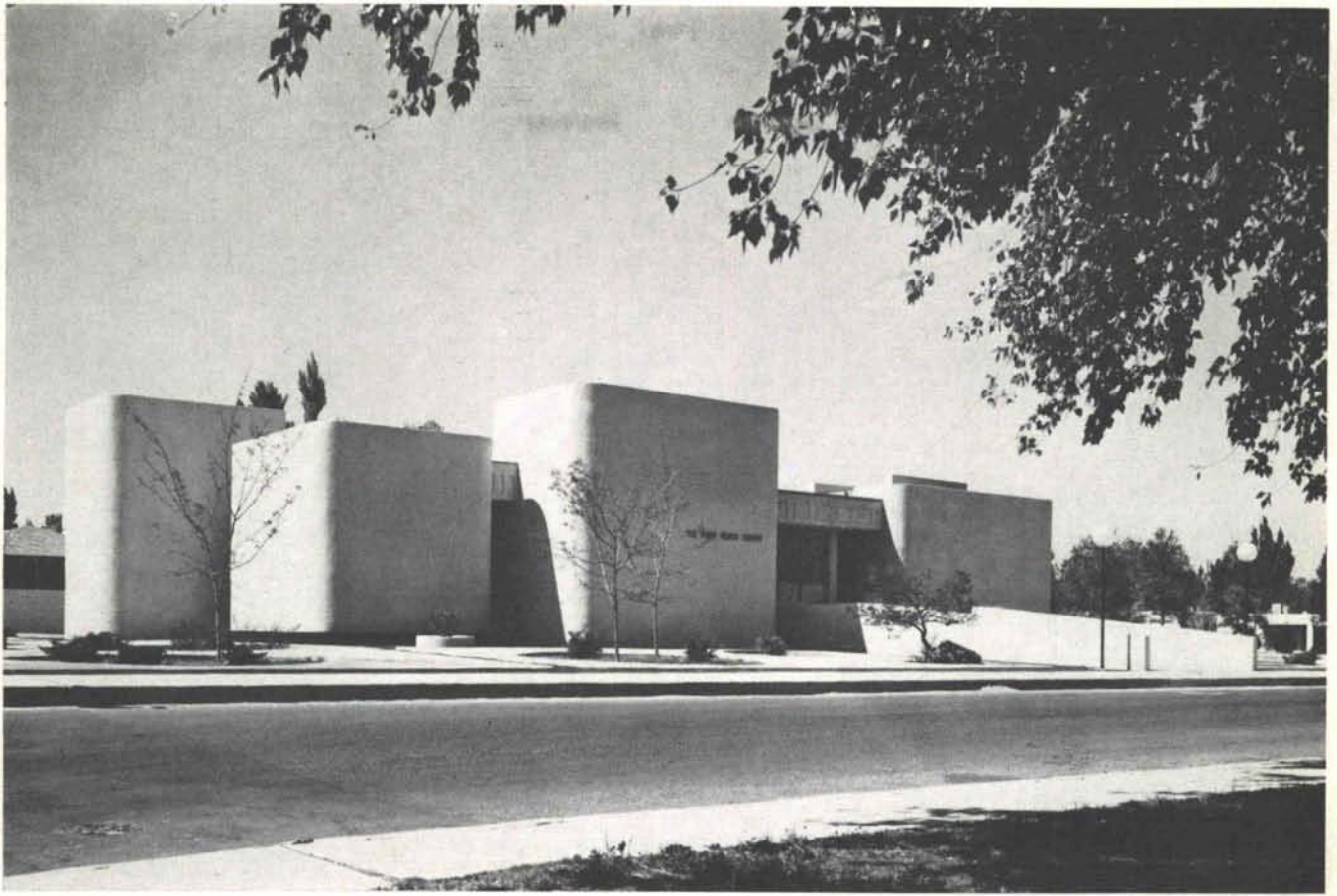


*Elevation of old stage*



*Plan of old stage*





Dick Kent

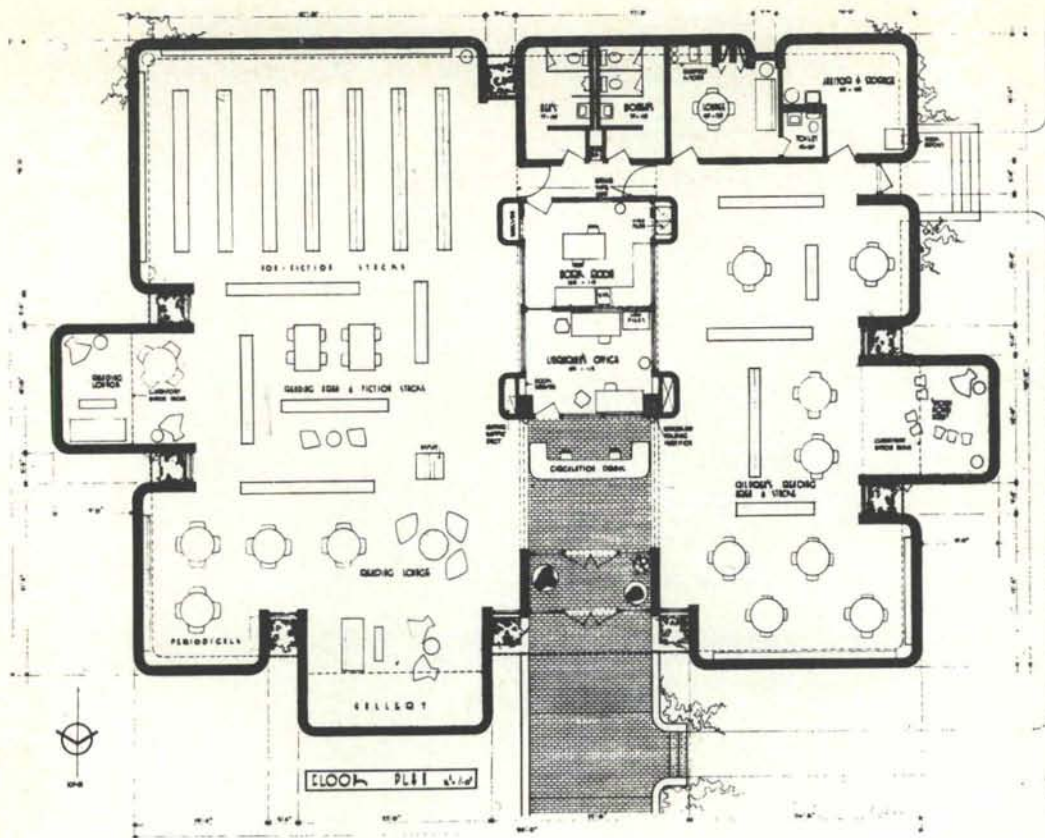
## SAN PEDRO BRANCH LIBRARY for the City of Albuquerque

John Reed, AIA, Architect

This small branch library is the latest addition to the growing library system of the city of Albuquerque.

Enclosing approximately 7,000 square feet of air conditioned space, the plan places the circulation desk near the main entry yet commanding a view and controlling all parts of the library. It was further desirable that the Librarian's office and workroom also have visual control of the reading areas. The children's reading area was necessarily separated from the adult reading area and stack area. The workroom-office area should also have a view of the entrance to the toilet facilities. The program required a method by which a portion of the library could be closed off for community meetings while the other portions of the building were locked. Because of careful planning, it is possible for one or two people to control the entire building.

Perhaps the factor which exerted the strongest control on the building's exterior appearance was the decision to use a minimum amount of glass. Yet from



the inside, it is important that this glass area be as important visually as possible. Maintenance, inside and out, has always been a problem with the city's branch libraries; this provided the reason for the simple exterior treatment as well as for the simple landscaping. The landscaping is achieved by a series of concrete slab islands with openings for plants and trees. Parking for 40 automobiles is provided with the same landscaping scheme carrying into this area also.

The ceiling height is constant throughout except in three areas: the Story Hour (children's reading), the Gallery (adult lounge), and the Adult Reading Lounge. These areas have high ceilings to provide clerestory lighting, and from the exterior their position can be seen clearly.

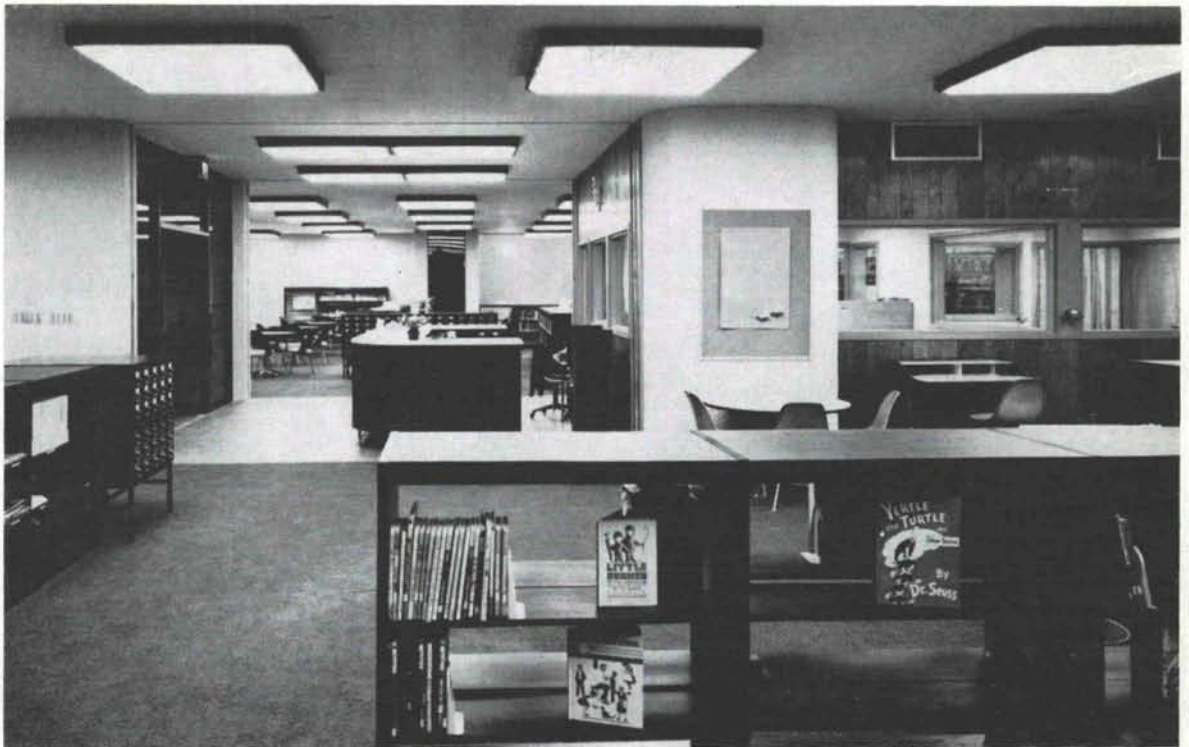
Construction cost for the building was approxi-

mately \$108,000. Library equipment and furnishings cost about \$25,000. Carpeting (of all areas except the entry-circulation, the office-workroom, storage, and toilet areas) was an additional \$6,000.

Construction is load-bearing masonry walls with a Trus-Joist roof system and a slab floor on compacted fill. Mechanical equipment is set in a parapeted area above the workroom and librarian's office. All exterior walls, both inside and out, are sprayed with a heavily textured cementitious coating. The majority of interior walls also received this treatment.

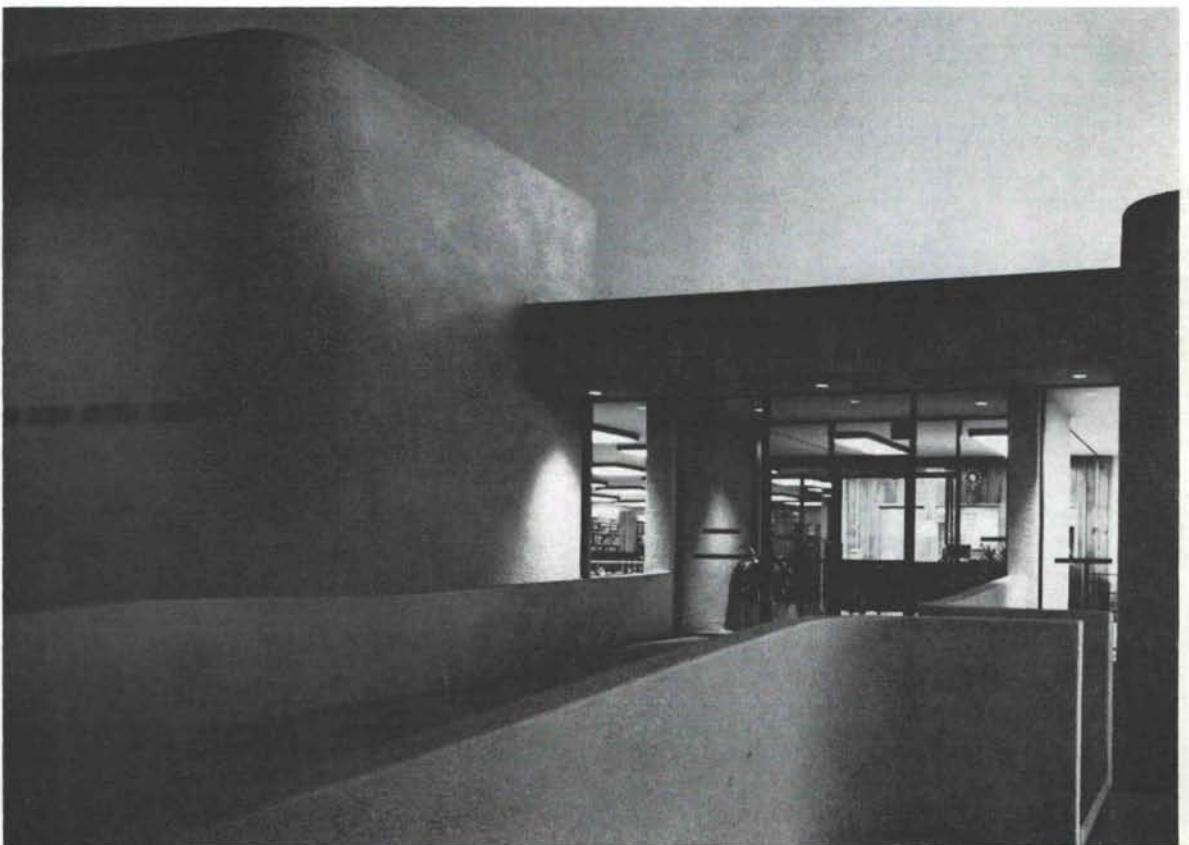
Designed to contain 25,000 volumes, the initial allotment of books numbers only 7,500 volumes. This building is a sincere effort to achieve a contemporary yet regional architectural expression.

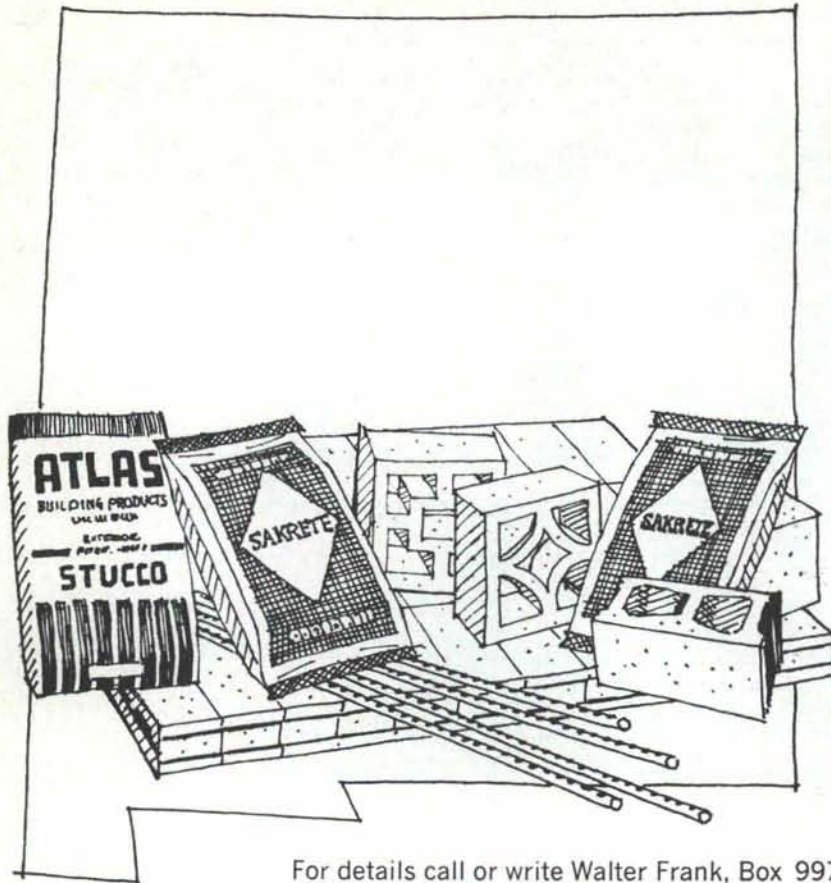




Jerry Soffe

Jerry Soffe





## In Southern New Mexico you can always count on Atlas

- Concrete Masonry Units
- Solar Screen
- Strestcrete Floor & Roof Slabs
- Duo-wire
- Sakrete® • Stucco

THE  
**ATLAS**  
BUILDING PRODUCTS CO.

For details call or write Walter Frank, Box 9977, El Paso, Texas Tel. 915 772-1451

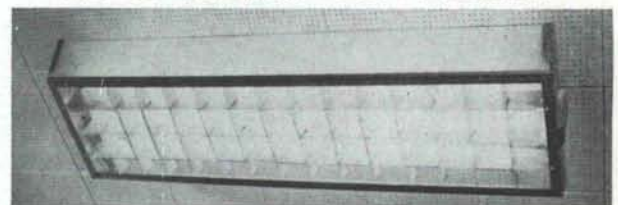
### 50 YEARS AGO . . .

This was the modern way to heat



### TODAY . . .

## IT'S HEAT-OF-LIGHT



Now there is a practical, low cost electric heating system that allows you complete freedom of material selection and expression of design. It's Heat-of-Light.

Heat-of-Light puts to use the heat given off by lighting fixtures, making it an effective, low-cost heating system, free from maintenance, and at the same time, increasing the effectiveness of the over-all lighting system.

Call Ed Fogleman at the  
**PUBLIC SERVICE COMPANY  
OF NEW MEXICO**

for complete details on  
Heat-of-Light system.





Jim Williams has owned a small L-shaped office building on Carlisle NE for several years. Recently, he decided to build a 4400 sq. ft. addition that would more than triple its size and enhance the older building. He wanted a prestigious but economical office for his insurance and real estate firm and he wanted office space for at least two more tenants.

It is our feeling that small commercial buildings should lend prestige to those who occupy them, yet be informal enough to be pleasant spaces in which to work.

The result is a W-shaped building with all offices adjacent to the landscaped court. Glass is oriented in generous amounts so occupants can enjoy the court and Sandia Mountains. This solution made it necessary to integrate the landscaping with the building design, and not merely fill a few small left-over open spaces with bushes. Fortunately, Jim Williams is one of those rare clients who does not feel that all of his commercial property must be covered with building or asphalt paving.

Grooved redwood plywood is used extensively inside and out because it has a texture and warmth compatible with the desert landscape. The walls of the existing building were also faced with redwood. A deep penetrating stain finish on the redwood will require minimum maintenance in the dry Albuquerque climate. All walls are wood frame while the roof structure is exposed wood T & G deck over exposed wood beams. As a result, the interiors also have great warmth and texture. This type of construction, including refrigerated air conditioning, landscaping, and parking has proven to be most economical.

Walking into this building with the planting and covered walkways is a pleasant experience of changing space, contrasting textures, and variation. Working in the building with its changing and contrasting vistas is also an enjoyable experience. We are so pleased with the Williams building that we have become one of the tenants. J. B..



## A Small Office Building - Albuquerque

### Architect - Joe Boehning

Owner — Jim Williams

Photographs — A. W. Boehning, Jr.

Builder — R. M. Swain & Son

Landscape—Taro's Gardens







*At the  
Claremont Colleges...  
there is no compromise  
with quality*

## THE SPECIFICATIONS CALLED FOR GENUINE CLAY MISSION TILE

The Claremont Colleges, noted for academic excellence, adhere to the highest standards of quality in every other respect as well. Since before the turn of the century, mission tile has lent color and distinction to campus buildings, from the most traditional to the most contemporary. One of the newer applications is on the modern Pendleton Business Building. Architects Buttress, McClennan and Markwith sacrificed neither beauty nor quality, for they specified only genuine clay mission tile—from the kilns of San Vallé. For after all, if it isn't clay... it isn't tile.

**San Vallé** TILE KILNS  
Since 1898

MISSION TILE



CLAY SHINGLE

1258 NORTH HIGHLAND AVENUE, LOS ANGELES, CALIFORNIA 90038 • TELEPHONE (213) 464-7289

## **Design Interiors**

### Complete Design Service

- ★ Office Furnishings
- ★ Contract Sales
- ★ Color Co-ordination
- ★ Draperies, Carpeting, Accessories

### Professional Design Staff

3 Locations to Serve You

THE PAPER MILL, Inc.  
132 W. Las Cruces Ave.  
LAS CRUCES, N. M.

DESIGN INTERIORS  
120 Morningside, S.E.  
ALBUQUERQUE, N. M.

THE INK WELL, Inc.  
314 Ninth Street  
ALAMOGORDO, N. M.

## Architects!

COMING SOON:

A NEW LINE OF  
**CREATIVE  
CONCRETE  
PRODUCTS**

*under the new name of*



ALBUQUERQUE **AGP** GRAVEL PRODUCTS COMPANY



## BUNTING NAMED TO MUSEUM BOARD

Bainbridge Bunting, Co-Editor of NMA, and professor of art and architecture at UNM, has been named to the Museum of Albuquerque board of trustees.

Dr. Bunting was appointed by the Albuquerque City Commission on the recommendation of City Manager G. B. Robertson.

## FIVE NEW REGISTRATIONS—AND ONE DISCIPLINARY ACTION TAKEN BY BOARD

At the meeting of the New Mexico Board of Examiners of Architects on October 6th, new architectural registrations were granted to Norman M. Maxon of Arizona, H. M. Bart Fischer of Texas, Chester Kite of Albuquerque, Elmo K. Lathrop of Arizona and Larry A. Ray of California. Four candidates were interviewed successfully and were invited to take the written state architectural examinations in December. Dates for the December written examinations—16th, 17th, 18th and 19th—were approved.

A hearing was held regarding a charge against one of the state registered architects. The charge was upheld; the Board found the defendant guilty of violations of the law of sufficient gravity to require revocation of his license. The Board has the power to do this at any time; but because the loss of his license could be considered as depriving him of his livelihood, the Board withheld action on the revocation for a probationary period of one year and three months or until December 31, 1968 during which time the Board will closely watch his actions.

## AIA TO SPONSOR SLIDE SHOW COMPETITION

The Task Force for the War on Community Ugliness announces a competition. This is the production of a slide show produced *within* and for a *specific* community. The

show should delineate those facets of the urban environment of the community which are objectionable, but its primary purpose should be to indicate possible solutions to these problems.

The purpose of the show is not to emphasize superficial "beautification," but rather to expose the viewer to the entire range of urban problems, including urban design, housing, transportation, traffic, public parks and buildings, historic preservation, street furniture, graphics, and non-design. The show should be directed toward the average citizen as well as students of all ages. It should not be focused primarily at the design-oriented viewer.

The competition is open to all Chapter and State Organizations of the Institute which may submit slide shows produced by any AIA corporate member(s).

### Format

The show is to be composed of a series of slides, either 2 x 2 or 2 3/4 x 2 3/4, or 8 mm or 16 mm motion picture film. The narration should be in the form of a typed script or a 1/4" standard magnetic tape properly synchronized with the projected picture. Background music may be used if desired. Color, black and white, or a combination of both will be accepted. The show should run between 13 and 26 minutes.

For further information, write to Neal English, Director of Information Services, The Octagon, Washington, D. C.

## AIA NATIONAL CONFERENCE PLANNED FOR PORTLAND AND HONOLULU IN '68

WASHINGTON, D. C., November 9, 1967 — A unique plan to hold its 1968 annual convention in two cities was announced today by Robert L. Durham, FAIA, president of The American Institute of Architects. The convention will be held in Portland, Oregon, and Honolulu, Hawaii, marking the first time in its 110-year history

that AIA has held its national convention in either of those cities.

From June 23 until mid-morning June 27, the convention will be held at the Memorial Coliseum in Portland. The meeting will then be recessed and delegates will board planes for Hawaii. The convention will reconvene on the morning of June 28 at the Ilikai Hotel in Honolulu and continue through June 29. Many of those not attending the Hawaii portion of the convention, will tour the Northwest.

More than 3,500 architects and associates, exhibitors and family members are expected to attend. The convention theme is "M.A.N.", Signifying Man, Architecture and Nature. Sessions will be devoted to the problems of man and his living conditions in the central cities and suburbia. Other sessions will cover the working aspects of the trends of the future of the architectural profession in America. A comprehensive view will also be taken of man, architecture and urban design planning as related to natural resources of the nation.

Serving as national convention chairman is Robert Martin, AIA, of Lincoln City, Oregon. David Pugh, AIA, of Skidmore, Owings and Merrill, is chairman for the Portland portion of the convention. Paul D. Jones, AIA, of Lemmon, Freeth, Haines and Jones, is chairman for the Honolulu portion of the convention.

More, Page 25



An excellent  
Christmas Gift  
would be a subscription  
to the  
New Mexico Architecture  
\$2.50 per year

Send your check now to:  
N. M. A. Box 18, University Station  
Albuquerque, N. M. 87106





OUR 31ST YEAR CLIMATE DESIGNING  
PAINT FOR THE SOUTHWEST

**HANLEY'S** and the



IN ARCHITECTURAL  
QUALITY PAINTS

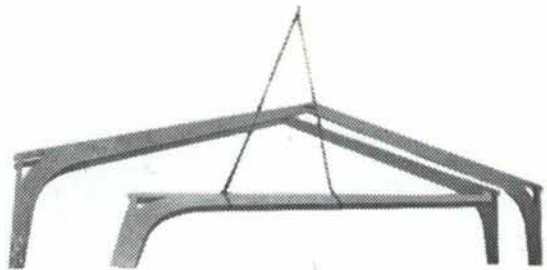
**SUNFOE  
AMBASSADOR**



**HANLEY PAINT MFG. CO., INC.**

EL PASO, TEXAS  
PH. 532-6921  
755-9821

ALBUQUERQUE  
NEW MEXICO  
PH. 265-1524



WE CAN DO A QUALITY BUILDING  
JOB FOR YOU AT LESS COST WITH  
WEYERHAEUSER LAMINATED WOOD BEAMS  
WEYERHAEUSER LAMINATED WOOD ARCHES  
WEYERHAEUSER LAMINATED WOOD DECKING

See us for complete Weyerhaeuser Structural Roof Systems.  
We can do the complete job from estimate through erection.  
Call for estimates or more information.



Weyerhaeuser Architectural Specialty Dealer

**ALBUQUERQUE**

1881

*Lumber* COMPANY

1967

3825 Edith, N.E.

Phone 345-2511

Variations on a theme :

**NEW Spectra-Glaze®**

**glazed masonry units  
DESIGN SERIES**

(not an alternate for  
any other material)

Your choice in color, texture,  
form, scale and pattern . . .  
Select from a variety of  
scored units to reduce scale  
for as little as a nickel extra  
per block . . . Build, decorate  
and finish in a single  
operation. Thru wall,  
load bearing units eliminate  
expense of back-up  
wall . . . Specify  
Spectra-Glaze glazed  
concrete units in your  
base bid to realize  
their unique  
advantages of  
design flexibility  
combined with  
lower-in-the-wall  
costs . . . Local  
delivery, world-wide.

Ⓢ Cataloged in SWEET'S

(R) Reg. U. S. Pat. Off. Canada & other countries by The Burns & Russell Co.

**FEATHERLITE TILE COMPANY** P. O. Box 489, Erskine Rd.  
LUBBOCK, TEXAS 79408 Phone 809 & PO-3-8202



**O'MALLEY GLASS & MILLWORK CO.**

WE FURNISH AND INSTALL

- CURTAIN WALLS
- GLASS STOREFRONTS

WE MANUFACTURE

- MILL WORK
- WOODEN "LAB" EQUIPMENT

Enjoying 55 Years of Service

ALBUQUERQUE	YUMA	EL PASO
TUCSON	GLENDALE	PHOENIX



## BETTY THOMPSON RECEIVES AWARD

**FLASH ! ! !** Elizabeth Kendall Thompson, A.I.A., senior editor of Architectural Record will receive the California Council, American Institute of Architects, Public Information Award. This award was established by the CCAIA board of directors in 1955 to recognize outstanding performance in the field of public information in areas relating to or in the interest of the architectural profession in California.

Mrs. Thompson's many years of perceptive reporting and analyses of architecture and design, and her valuable public service as a member of civic and professional committees concerned with improving man's environment, led to her selection.

Her citation reads: "... To Elisabeth Kendall Thompson, editor, author, and educator, whose many years of knowledgeable architectural journalism and service to the profession have created a greater understanding, for both architect and layman, of the heritage, goals, and unlimited future potential of architecture."

The citations will be presented to Mrs. Thompson by CCAIA President Howard H. Morgridge, FAIA (Southern California), at the CCAIA presidential banquet during the Council's annual convention in San Diego next month.

The editors of NMA join with all the members of the New Mexico Society of Architects in extending their congratulations to Betty. It could not have happened a nicer person!

## GARDEN OF THE INTERNATIONAL CENTER OF UNIVERSITY OF NEW MEXICO

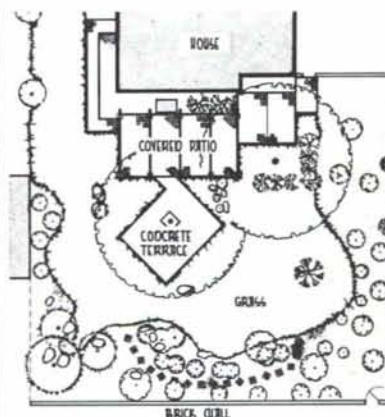
The sense of isolation so often experienced by a foreign student at our universities is a loss not only to himself but to the American student as well. International Students has set as its goal the promotion of a meaningful interchange



between foreign and American students at the University of New Mexico through a program of dinners, folk dances, seminars, language courses, poetry readings and many other formal and informal get togethers. For some time the program has suffered from the lack of a suitable meeting place. This year President Tom Popejoy offered the group the rental of a former faculty residence just west of the campus. Under the leadership of organization president John Bakas, the house and grounds were extensively remodelled to offer a relaxing and informal home for the group's activities.

One of the prime needs was an outdoor area which could serve large groups of up to three hundred people and yet provide an intimate atmosphere for daily use by a handful of students. The design solution is a shaded, bricked paved terrace that provides a small setting reminiscent of a sidewalk cafe, opening onto a walled and landscaped area for larger groups. The brick paving and the handsome fir and canvas shelter were designed by three students from the UNM Department of Architecture — Roger Lujan, Richard Pelouze, and Ray Trujillo — and installed with volunteer student help. Sodding was supplied by Richard McGuire of the University Golf Course and an extensive brick wall constructed through the generosity of Kinney Brick Company and Bradbury and Stamm Construction Company. Landscaping was de-

signed and installed with student labor by Taro's Landscaping; materials for the shelter were donated by Mr. Oren Strong of Strong Thorne Mortuary. Interior furnishings were designed and in large part donated by Mrs. Modesta Comeford of Modesta's.



## CSI TO ESTABLISH RESEARCH FOUNDATION

The Construction Specifications Institute, Washington, D.C. unveiled plans today for establishment of a CSI Research Foundation. President John C. Anderson, FCSI, announced that the Institute Board of Directors unanimously approved establishment of the Foundation to conduct much-needed research in automation as it affects specifications practices and techniques. Anderson stated that increasing applications of automation in construction compel CSI to move promptly into this research and other related areas

More



## Dependable . . .

### SOUND, INTERCOM AND POCKET PAGING FOR EVERY BUILDING TYPE

Our broad experience in this specialized field is available to you. Contact us for general planning help.

No obligation, of course.

## *Executone* OF NEW MEXICO

111-A CORNELL DR., S.E., ALBUQUERQUE, N. M. 87106  
PHONE 242-4611

## WORKING FOR: An improved business climate in the New Mexico Construction Industry



W. D. Ross  
Executive Director

205 Truman N.E.  
Albuquerque,

265-8703  
New Mexico 87108

as an obligation to its members and the industry.

The decision to establish the Foundation stems from findings of a recent CSI sponsored "state-of-the-art" study conducted by the Stanford Research Institute. The report forecasts the probability of dramatic changes in architectural and engineering practices as they pertain to specifications. Referring to several automation systems currently being applied and others under development the report states that "if this proliferation continues, a veritable Tower of Babel will exist." Primary attention to this urgent problem will be given by the CSI Research Foundation.

Organizational planning for the Foundation is underway with operation expected to commence in early 1968.



## new mexico architecture nma

Published bi-monthly, by the New Mexico Society of Architects American Institute of Architects, a non-profit organization, 115 2nd St., S.W., Suite 200, Albuquerque, N. M. 87101.

**Editorial Correspondence:** All correspondence should be addressed to John P. Conron, P. O. Box 935, Santa Fe, New Mexico 87501.

**Editorial Policy:** Opinions expressed in all signed articles are those of the author and do not necessarily represent the official position of the New Mexico Society of Architects, A.I.A.

No responsibility will be assumed by the editor or publishing organization for unsolicited contributions. Return postage should accompany all unsolicited manuscripts.

**Subscription rates:** single copy 50c; one year \$2.50. Second class postage paid at Roswell, New Mexico.

**Change of address:** Notifications should be sent to N.M.A., Box 18, University Station, Albuquerque, N. M. 87106 at least 45 days prior to effective date. Please send both old and new addresses.

**Advertising:** Requests for rates and information relating to advertising should be addressed to W. M. Brittelle, Sr., 115 2nd Street, S.W., Suite 200, Albuquerque, N. M. 87101.

## INDEX TO FIRMS

Cooperating in the public relation program of the NMA magazine, making possible its publication and the page upon which their message may be found.

Albuquerque Gravel Products	22	Miller Metal Co.	11
Albuquerque Lumber Co.	24	New Mexico Pipe Trades	26
Albuquerque Testing Lab.	7	N. M. Marble & Tile Co.	7
Anderson, Clinton P.		O'Malley Glass & Millwork Co.	24
Agency, Inc.	6	Otto, Edgar D.	11
Atlas Structural Concrete, Inc.	20	Prestressed Concrete Products, Inc.	7
Builders Block & Stone Co., Inc.	10	Portland Cement Assn.	2 & 3
Crego Block Co., Inc.	12	Rio Grande Steel Products Co.	4
Customwood Manufacturing Co.	8	Public Service Co. of N. M.	20
Design Interiors	22	San Valle Tile Kilns	22
Executone of New Mexico	26	Southern Union Gas Co.	11
Featherlite Tile Company	24	Southwestern Electric Shop, Inc.	7
Hanley Paint Mfg. Co., Inc.	24	Southwest Vermiculite Co.	8
Hydro Conduit Corp.	28	Stryco Sales, Inc.	6
Kinney Brick Co., Inc.	11	University Book Store	
Idealite	27	Allied Supply Co.	4
Lumber Merchandise Assn.	10	Wellborn Paint Mfg. Co.	6
McGill, George B.	10		



an example of how

# IDEALITE

opens up a new  
era of expression for  
architects/engineers  
making creative designs  
practical to build

The new Key Savings and Loan Association building in Englewood, Colorado is an outstanding example of the latitudes available to the architect for the expression of functional beauty through unique design using Idealite lightweight concrete.

Because Idealite weighs up to 30% less than regular concrete, the design proved extremely feasible. First, the foundation could be reduced in size because of lessened dead load, which produced savings in foundation costs. Second, Idealite helped reduce bending moments of the mezzanine, an important requirement due to limited availability of support column locations. And, Idealite met the job requirements for both strength and superior insulating qualities – very important considerations for this particular job.

If you are considering the construction of any building, large or small, investigate the advantages of Idealite lightweight concrete.

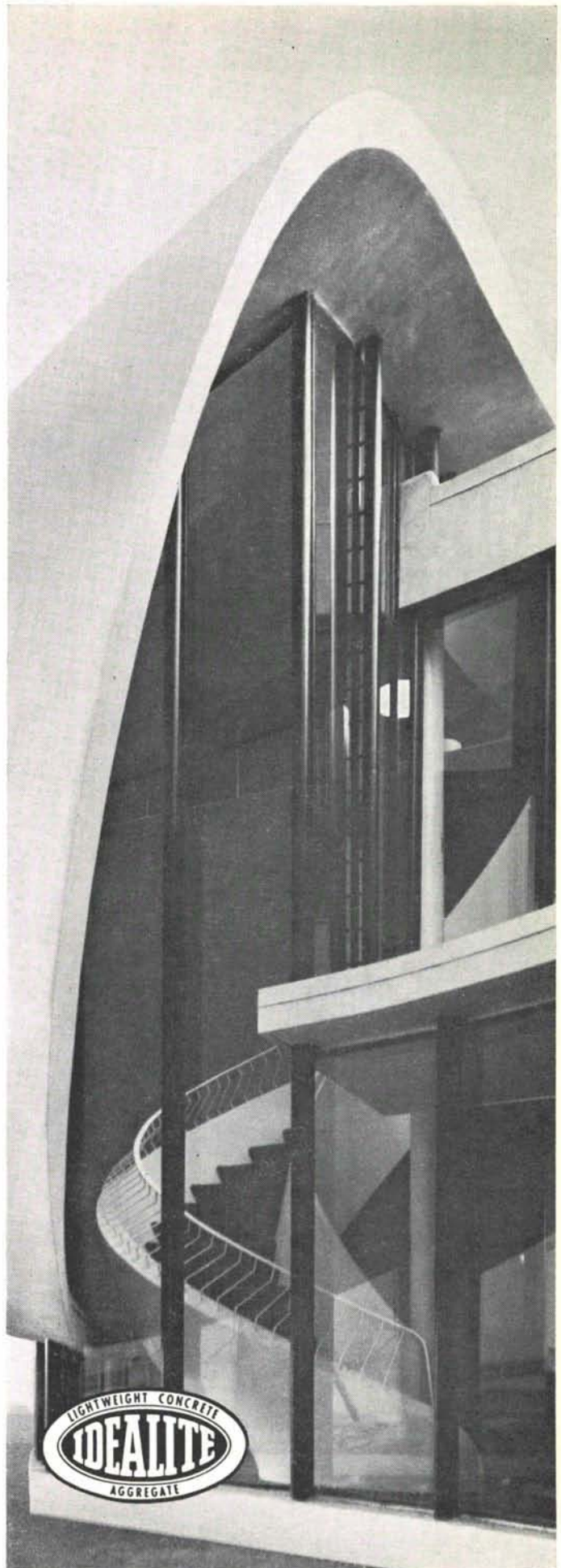
Idealite lightweight concrete makes possible buildings that are higher, spans that are wider, designs that are handsomer.

*Charles Deaton, Architect;  
Meheen Engineering Co., Structural Engineers, Denver*

# IDEALITE

*Producers of Idealite Lightweight Aggregate for  
Concrete and Concrete Products*

821 17th Street • Phone 534-5144 • Denver, Colorado 80202





Library  
University of New Mexico  
Albuquerque, N. M. 87106

Bulk Rate  
U. S. Postage  
**PAID**  
Roswell, N. M.  
Permit No. 47

# THE BIGGER THE BETTER

A classic example of the attractive use of precast, prestressed exposed aggregate panels; the new 58,000 sq. ft. Field House for the U. S. Air Force Academy at Colorado Springs, Colorado.

The building contains 404 wall and fascia panels, 515 nailer panels and 802 seat deck prestressed-precast units. All precision produced by Hydro-Conduit Corp.

CONTRACTOR  
FRANK BRISCOE & CO.  
CORPS OF ENGINEERS



FOR  
DURABLE  
BEAUTY  
SPECIFY  
CONCRETE



**HYDRO CONDUIT CORPORATION**

2800 SECOND ST., SW • ALBUQUERQUE, NEW MEXICO 87103