

FA
720.5
N4195
v.8
No. 1-2



new mexico architecture

january-february 1966 504

Through 50 Years...

serving America's concrete industries



1916 Many early-day concrete streets such as this are still carrying traffic today



1966 New advances in concrete keep it the preferred pavement for modern streets

Engineering field service Technical information services Research and development

The basic services provided by the cement industry through their Portland Cement Association have benefited practically everyone responsible for the planning, production and use of concrete in construction.

During the 50 years past, these services have contributed importantly to making concrete the country's most widely used construction material.

Improved and expanded uses of concrete have resulted from PCA engineering, research and information programs.

The increasing demand being placed on modern materials technology and construction skills will make the broad-scale services offered by the cement industry through their Portland Cement Association even more significant in the 50 years ahead.



1916 to 1966
50th year

PORTLAND CEMENT ASSOCIATION

Suite 705-5301 Central N.E., Albuquerque, N.M. 87108

An organization to improve and extend the uses of concrete, made possible by the financial support of most cement manufacturers in the United States and Canada.

nma

vol. 8 • nos. 1 and 2 • jan. - feb. 1966 • new mexico architecture

New Mexico Arts Commission	7
First Annual Award Banquet Albuquerque Chapter, AIA	9
Women's Dormitory, Highlands University — Robert Walters, AIA	10
Architectural Awards, Albuquerque Chapter, AIA	15
Index of Advertisers	22

(Cover — Campanile, Wilshire Shopping Center, Roswell, N. M.
Herb Goldman, sculptor; Ken Cobeau, photographer)

— Official Publication of the New Mexico Society of Architects, A. I. A. —

Society Officers

President—Hugh Rowland
Vice-President—Robert Mallory
Secretary-Treasurer—Don Oschwald
Director—Joe Boehning
Director—Bradley Kidder
Director—Albert S. Merker
Director—Charles Noland
Director—John B. Reed
Director—James Voll

Publications Committee

Bainbridge Bunting)
John P. Conron) Co-Editors
Jean Rodgers Oliver—Photographer
W. M. Brittelle, Sr.—Advertising
Van Dorn Hooker—Circulation
Jason P. Moore
John B. Reed
Robert G. Mallory
Richard S. Clark
Charles E. Nolan, Jr.



This attractive home is built with 8 x 4 x 16 Atlas White Mission Masonry

Atlas Mission Masonry is well adapted to building in the Spanish architectural style so popular in the Southwest. Painting is not required; available in various shades.

Don't settle for a substitute . . . build with Atlas Mission Masonry.

Call collect for information and prices to
Walter Frank, 772-1451, El Paso.



BUILDING PRODUCTS CO.

200 N. GLENWOOD • EL PASO, TEXAS 79905



A new world in which to work

The ACTION OFFICE

Photo shows a sitdown worker's grouping

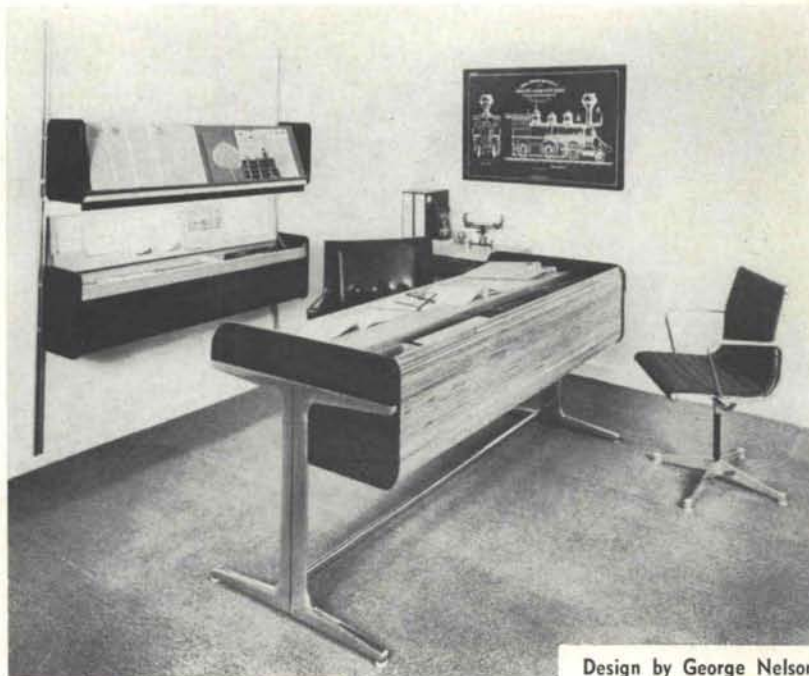
**Distributor of
Herman Miller Furniture**

Visit our display rooms
at
509 Second Street, NW
Albuquerque, New Mexico
(505) 247-0263

Furniture groupings for the standup worker, the sitdown worker, the straddler or the percher are assembled for your edification.



Researched and developed
by Robert Probst, Director of
Herman Miller's Research Division.



Design by George Nelson

DOVER
ELECTRIC
ELEVATORS
FOR HIGH-RISE BUILDINGS

Mr. Architect . . .
let us show you why a large percent of
Building owners in New Mexico rely upon
us for dependable Vertical Transportation.

Inquiries invited.
106 Buena Vista S.E.
Albuquerque, N. M.



Rotary
OILDRAULIC ELEVATORS
FOR BUILDINGS TO SEVEN STORIES

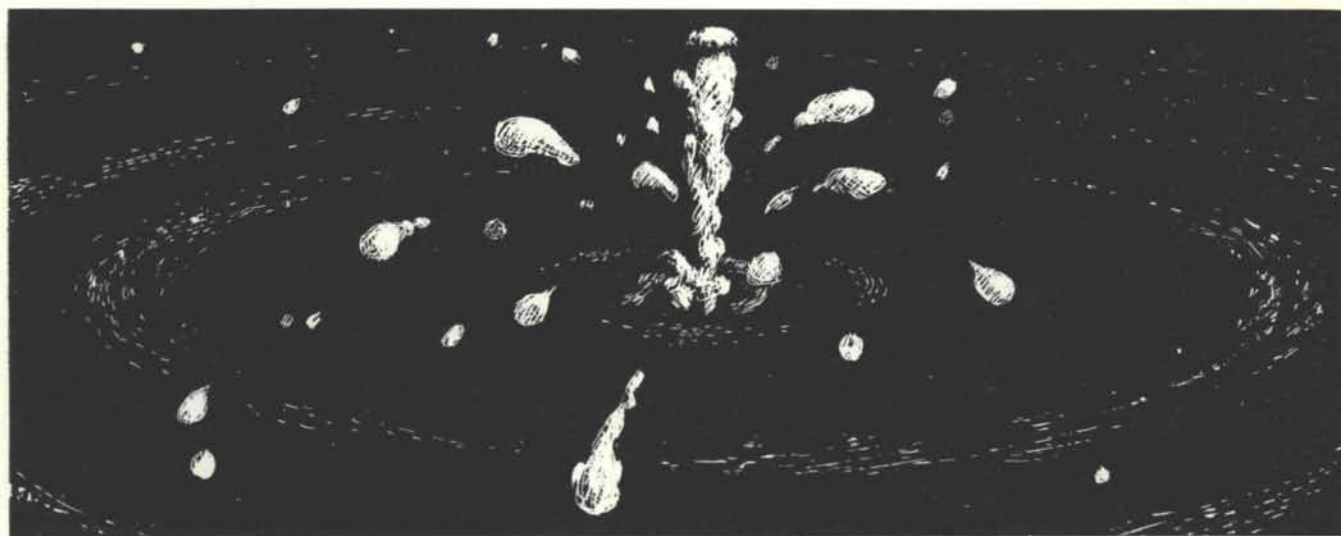
HUNTER-HAYES ELEVATOR CO.
SUBSIDIARY ■ DOVER CORP.

Offices Throughout the Southwest



BANK OF NEW MEXICO Albuquerque, N. M.

- 3. High Speed Automatic Elevators
- 1. Rotary Oildraulic Elevator



Specify Hydronics . . . The science of heating and cooling with liquids —

Your building and your clients deserve Hydronics. It allows freedom of design and is easily installed in any construction material. Client satisfaction is delivered through comfort performance,

cleanliness, built in mechanical durability and long life. Economy comes from low owning, operating and construction cost.

NEW MEXICO PIPE TRADES INDUSTRY PROGRAM

OUR 28TH YEAR CLIMATE DESIGNING
PAINT FOR THE SOUTHWEST

HANLEY'S *and the*

COLOR
GUILD
ASSOCIATES

NEW WORLD
OF COLOR

IN ARCHITECTURAL
QUALITY PAINTS



SUNFOE
AMBASSADOR

HANLEY PAINT MFG. CO., INC.

EL PASO, TEXAS
PH. 532-6921
755-9821

ALBUQUERQUE
NEW MEXICO
PH. 265-1524

Miller
Metal company

Direct Factory Dealers for

LENNOX

Heating and Air Conditioning

Readily available for your information and/or use
are complete specifications along with Technical
data for the Heating and Air Conditioning require-
ments of your project.

Just call 268-3351 for **Ed Miller** at Miller Metal
Company or the territory manager for LENNOX,
Bob Vetterman at 265-0417 for an appointment.

MILLER METAL COMPANY

118 Alcazar S.E. Albuquerque, N. M. 87108

CHOOSE
TAPPAN
BUILT-INS

easy to install . . .
last a lifetime!

ON DISPLAY AT

ALBUQUERQUE

1881

Lumber COMPANY

1966

-- EDITH YARD --

3825 Edith, N.E.

Phone 345-2511

We invite you to consider us as
your concrete headquarters
Albuquerque's Quality Concrete.

**Albuquerque Gravel
Products Company**

Albuquerque, New Mexico

600 John St., SE Phone CH 2-5265

HOW
WOULD
YOU
COOL
AND
HEAT...

The largest pavilion at the New York World's Fair? Or the world's busiest airport? Or New Mexico's tallest building? Or a 25-acre shopping center? Or a modern high school? Or your own home?

If you want the job done right
...do it with gas.

In homes, businesses, factories, schools—wherever there is a need for climate control—the demand for dependable gas is growing! Gas-fired equipment is produced today by more manufacturers than ever before. From small residential units to giant industrial systems, gas equipment is dependable, efficient, safe, compact, flexible—the most economical and longest-lasting of all heating and cooling systems.

It is *gas* which cools and heats... the Ford pavilion and 28 other major pavilions at the New York World's Fair, New York International Airport, the Bank of New Mexico's skyscraper, Rushfair shopping center in El Paso, beautiful El Paso Technical High School, and many of the finest homes all across the country. Think about it.

SOUTHERN UNION

GAS
COMPANY

The New Mexico Arts Commission

The New Mexico Arts Commission, with John McHugh, AIA as Chairman, was created by the 1965 New Mexico Legislature to advise and assist on civic beautification, to foster appreciation for the fine arts, to make this state more appealing to the world, to encourage creative ability in the arts in the state, and to attract outstanding arts to the state.

At the present time, the New Mexico Arts Commission has applied to Washington for funds to assist with grants-in-aid, under the new Arts and Humanities Act, for the promotion of progress and scholarship in the humanities and the arts through productions, projects, workshops, grants, fellowships, surveys, and research within the state. The Commission issues an attractive monthly Newsletter, the first issue of which appeared in mid-December, which includes a statewide Calendar of Cultural Events. The Commission will offer without charge to any community within the state revolving exhibits or do-it-yourself talks accompanied by colored slides on all phases of the arts. It also plans to sponsor speakers on such topics as art therapy in prisons, old peoples homes, orphanages, homes for the delinquent or retarded, and in hospitals. Shortly a radio program, "The New Mexico Arts Commission Presents," will be heard on the air to give people of this area, through the Library of Congress, the finest in the world's musicians and artists.

Already the New Mexico Arts Commission has arranged the purchase of a collection of photographs of old New Mexico buildings that have disappeared or will soon disappear. These will be used as part of a book on the state's unique architectural heritage.

For the Western Mountain Region AIA Conference in 1966, which will be held in Santa Fe, the New Mexico Arts Commission plans to arrange an architectural exhibit, and it anticipates presenting special awards for the best new buildings, for the best restoration, and for the individual bit of craftsmanship which has most contributed to the humanistic qualities of buildings or spaces.

*C. James Cook, Administrative
Secretary to the Commission.*



Scene on Canyon Road, Santa Fe; sketch by John McHugh.



"STEEL SHAPES THE FUTURE"



7100 Second Street, N.W. / Post Office Box 477
Phone 345-2611, Area 505 / Albuquerque, N. M. 87103

**RIO
GRANDE**

Steel Products Company, Inc.

628 W. Maple Street / Post Office Box 2002
Phone 325-1926, Area 505 / Farmington, N. M. 87401



CONSULTING SERVICES AVAILABLE



Showrooms & Sales Offices

CREGO BLOCK CO., Inc.

Manufacturers of the finest Autoclave Blocks in New Mexico
Meeting or surpassing ASTM minimum code requirements

6026 Second, N.W.

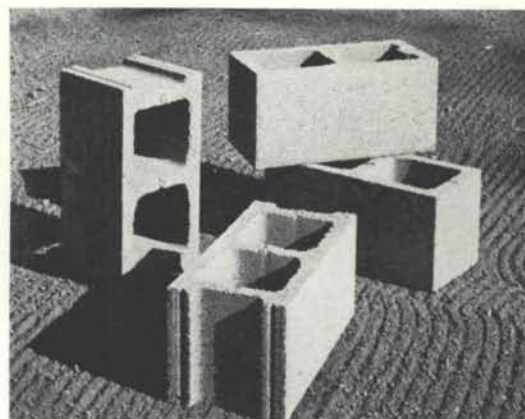
Albuquerque
344-3475 (505)

New Mexico
87107

ARCHITECTS — BUILDERS

Visit Our Showrooms—displaying such
products as;

- **Normal**, all sizes of Scoria Blocks
- **"SLUMPROK"** Double faced hollowcore only by CREGO. Soft shadows & highlights, in 4 colors.
- **SPECIAL**, Lightweight (25#) Scoria Block with 1" sidewalls — extra large cores — only by CREGO —See Photo
- **SHADOW, Sculptured & Sun Screen** blocks in all sizes and varieties
- Miscellaneous materials of interest





"I think that I shall never see, a billboard lovely as a tree."

IS THE BILLBOARD BLIGHT ABOUT TO BE CURED??

Congress has passed a bill which could lead to the elimination of billboards from great stretches of the nation's highways. Although the final bill was greatly watered down by pressures from the billboard industry, considerable progress is in sight for relieving our highways of their visual clutter.

President Johnson, for instance, wanted billboards controlled within 1000 feet of the 226,000 miles of the nation's interstate and primary roads. This distance has been cut to 660 feet. He had also asked that \$100,000,000 a year (one-third of the Federal funds authorized) be used for construction of roads leading to or through scenic areas. This provision was eliminated from the final bill.

But Congressional action must be matched by state action; federal funds made available for the cost of billboard removal must be equalled by state funds. That means that the New Mexico Legislature must vote those funds. Our Legislature is now in session. Steps can be taken to implement the federal program.

States must also agree to control billboards and to remove or screen junkyards along their Federal roads by January 1, 1968 or forfeit 10 per cent of their federal highway grants. Each state will receive

The candidates also confront
us with eyesores.





"The squawks died out plenty fast when everybody saw the club bounce into the black."

Drawing by Stevenson, Copyright The New Yorker Magazine, Inc.



The beauty of nature and the infringements of man.

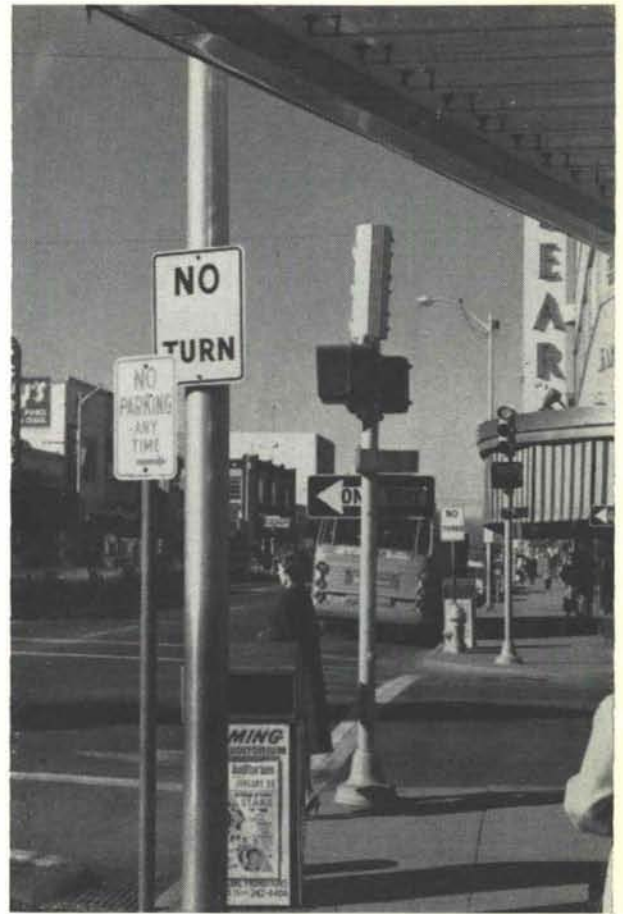
funds equal to 3 per cent of its highway construction aid to finance this beautification.

Certainly the billboard industry is not going to agree to the removal of their signs without a fight, and this industry has a powerful voice within the New Mexico Senate—Senator Gordon Melody. Senator Melody is one of the most respected members of the Senate, and he is the owner of the Melody Sign Company. He could increase his stature with the voters by pushing for the needed legislation.

But once again, *New Mexico Architecture* would like to say that while much of offensive advertising is forced upon us as we drive along our highways, a considerable amount of valuable information to tourists is also presented on billboards. While we admit the need for local motel, restaurant, and sights-of-interest information for the traveler, we feel that the billboard jungle now put forward is downright ugly. In the September 1964 issue of NMA we presented one possible alternative to the unsightly billboard. We suggested that a booklet be prepared which would assist and guide the visitor through the state. It could include notes on historic and scenic sites as well as practical information, and it could be given to tourists at points of entry, at gas stations, and the like.

The New Mexico Society of Architects would like to offer its aid and to advise in the actual design of such a booklet. It would also aid the State Department of Development in a search for still other means of disseminating the useful information which billboards display.

Further, the Editors would like to see a program of "scenic roads" studied and implemented throughout the state. One such route was suggested in 1961 during the intensive study made of the Embudo Watershed by the Interagency Council for Area Development and the New Mexico Planning Office. Three other handsome guides to sections of northern New Mexico have been issued by *Landscape*, a magazine edited and published in Santa Fe. Entitled "Santa Fe to Taos and Return," "The Espanola Valley," and "Pecos and Villanueva," these guides point out items of artistic and architectural interest and



But billboards are only a part of the clutter; city officials must also begin to organize and to simplify the confusion of directional signs and trash cans.



Just plain UGH!



The Vigilantes
rode out . . .



to put down outlaws
(and to clear the view).



The oldest city and
the newest wiring.

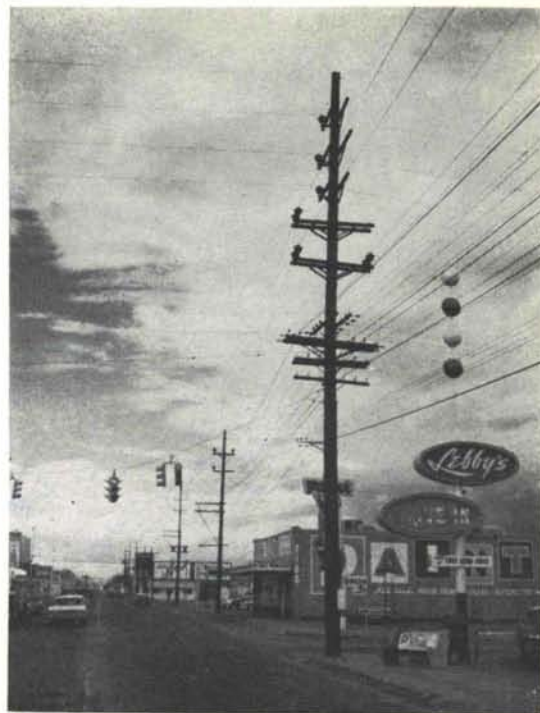
include comments on the ecology, economy and history of the area. Many other routes could be developed which would be of great educational and recreational benefit to tourists and to citizens of the state as well. How many thousands of tourists could be persuaded to linger an extra day or two in our extraordinary state to follow an interesting, out-of-the-way tour if only they knew about it!

But while we are cutting down billboards on the highways, what about the confusion of signs inside our city limits? The highway beautification bill which President Johnson has signed does not encompass the eradication of signs within our towns. Here the confusion is even worse—worse to the point where strident signs sometimes make the streets unsafe. It is often difficult to distinguish traffic lights from the chaos of signs, some with moving colored lights.

And those aerial cobwebs—utility wires. We admit that the cost of burial for utility lines is large. On the other hand, we are told that we live in an affluent society, and certainly such a society can find the ways and the funds to do an important job. We are also told that the maintenance costs of buried lines is higher than when the ugly things are allowed to swing about overhead. Yet when we observe what utility companies in other parts of the country have done in this matter, we wonder. The telephone company, on the other hand, has undertaken the burial of its lines. We wish to take note of this and to congratulate its directors publicly for this step forward.

Perhaps a committee of interested persons, which would include representatives of the utility companies, should be appointed by the Governor to carry out a full investigation of the true costs of carrying power lines underground. Appraised of the facts, the people of the state could then take intelligent action.

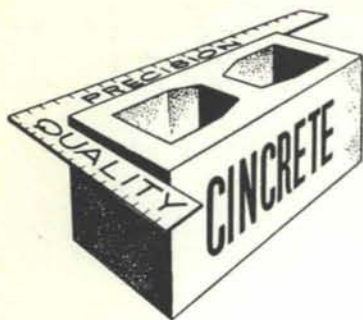
We know that we are talking only about the cosmetics of environment, not about full and comprehensive planning. Certainly a continuing and comprehensive planning program is necessary and vital, but the face of New Mexico would look a little brighter right now if a touch of cosmetics were applied.—JPC-BB



The wires above us crisscross the city skyline like cobwebs woven by some giant, atomic-mutated spider.



But signs can inform and still be a part of—rather than an intrusion upon—the landscape.



Serving Southwestern New Mexico
and El Paso with
Quality Concrete Masonry Products
and many allied building materials



Hollow Metal Doors and Frames

Wood and Plastic Folding Doors

Commercial Hardware

Reinforcing and Fabricated Steel

Residential and Commercial Steel and Aluminum Windows

Builders Block & Stone Co., Inc.

Builders Block & Supply Co., Inc.

P. O. Box 1633

Roswell

El Paso

P. O. Drawer FF

Las Cruces

622-1321

532-9695

524-3633

Members of New Mexico Concrete Masonry Assn. and National Concrete Masonry Assn.

50 YEARS AGO . . .

This was the modern way to heat



TODAY . . .

IT'S HEAT-OF-LIGHT



Now there is a practical, low cost electric heating system that allows you complete freedom of material selection and expression of design. It's Heat-of-Light.

Heat-of-Light puts to use the heat given off by lighting fixtures, making it an effective, low-cost heating system, free from maintenance, and at the same time, increasing the effectiveness of the over-all lighting system.

Call Ed Fogleman at the
**PUBLIC SERVICE COMPANY
OF NEW MEXICO**

for complete details on
Heat-of-Light system.



The first annual awards banquet of the Albuquerque Chapter, AIA, was held on December 10 at the Alvarado Hotel in Albuquerque. Principal event of the evening was the presentation of honor awards to Albuquerque architects. As it was the first year for making awards, no time limit had been placed on the construction date of an entry. Jurors were: Thomas Vreeland, John McHugh, and John Tatschl.

FIRST ANNUAL AWARDS

Albuquerque Chapter, American Institute of Architects

Honor Awards

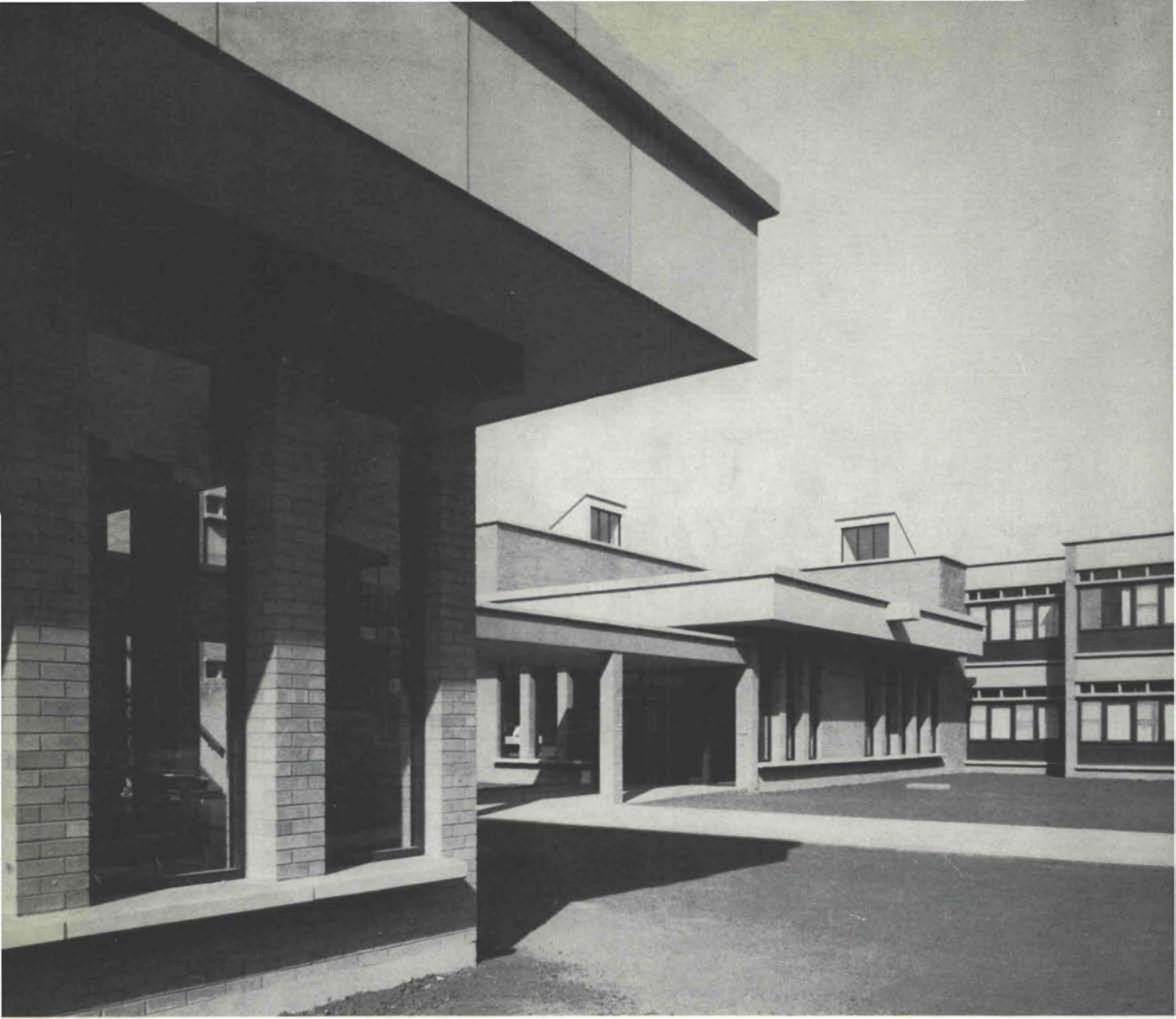
- Flatow, Moore, Bryan and Fairburn
College of Education Complex
University of New Mexico
(see New Mexico Architecture, May 1963)
- Robert Walters
Women's Dormitory, Highland University
(see page 10)

Awards of Merit

- Ferguson, Stevenson, Mallory and Pearl
Ideal Cement Plant, Tijeras Canyon, N. M.
(See New Mexico Architecture, January 1961)
- Harvey Hoshour
Unitarian Church, Albuquerque, N. M.
- John Reed
Netherwood Apartments, Albuquerque
(see New Mexico Architecture, July 1964)
- Don P. Schlegel
John D. Robb Residence, Albuquerque
(See New Mexico Architecture, September 1963)
- George Wright
Great Ape House, Albuquerque Zoo



College of Education Complex
University of New Mexico

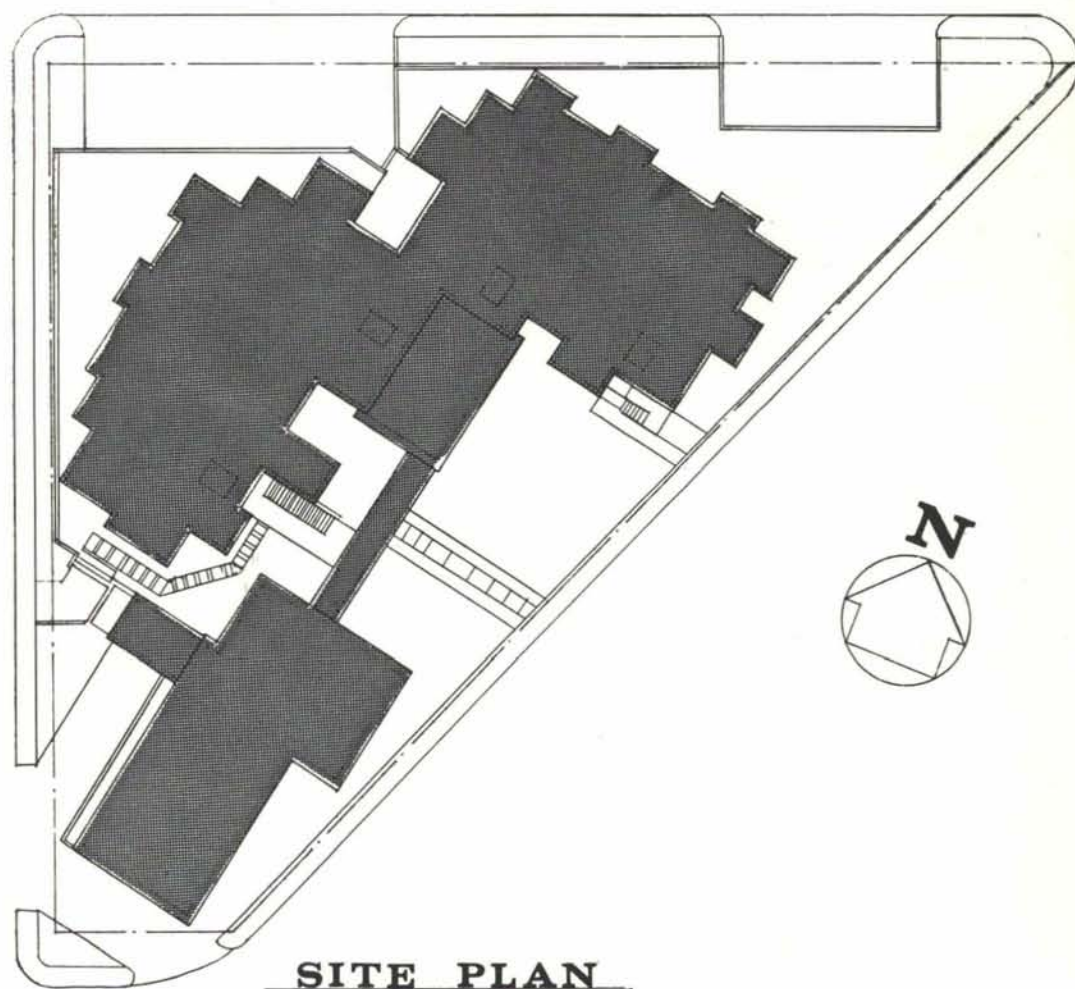
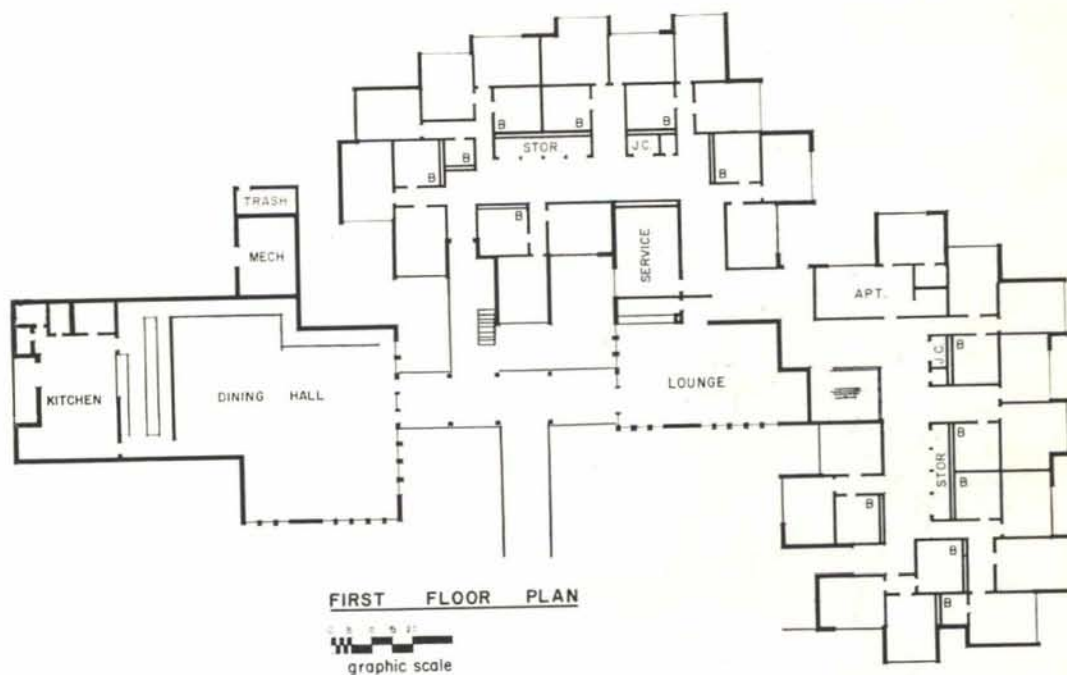


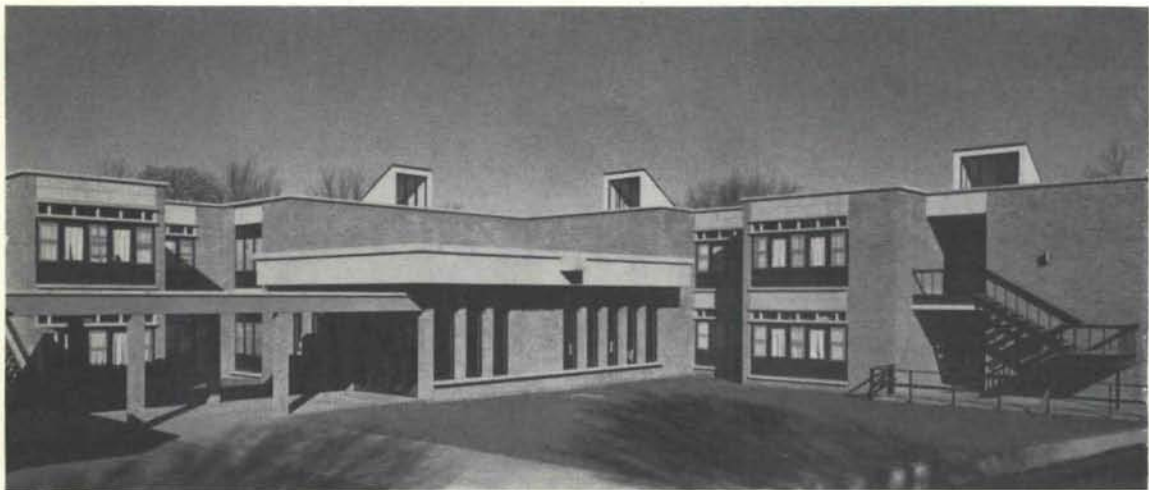
M E L O D Y H A L L A Women's Dormitory

This dormitory for 100 women was completed in November 1965 for Highlands University, Las Vegas, New Mexico. Built on a limited triangular site of less than an acre, the plan describes an irregular form. This irregularity is expressed by the rooms which show a changing space and outlook. The 12 foot-wide halls reduce the circulation to a length of 48 feet and are lighted by roof monitors which add variety and interest to the interior vistas. Each suite of two rooms houses four women and has a separate bath.

The basic construction is 12 inch brick bearing walls, precast concrete panels, and bronzed aluminum sash and doors. The dining hall seats 200

Robert Walters, A.I.A.
Architect





and is connected to the main lounge by an open, canopied walkway.

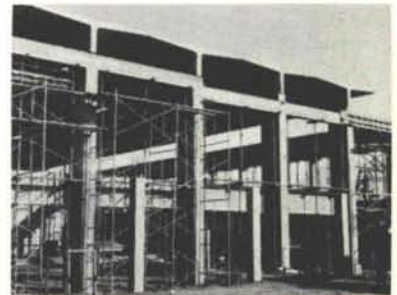
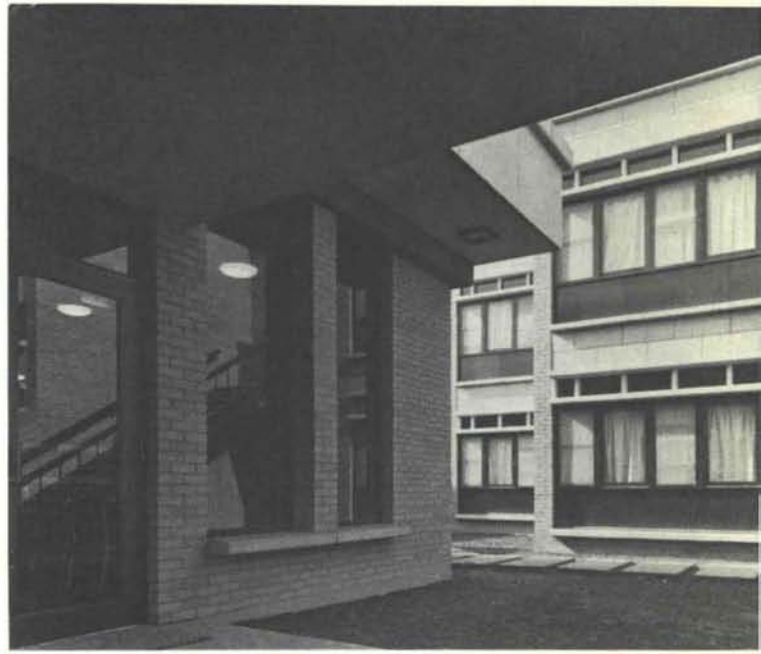
Construction cost was \$16.00 per square foot.

Melody Hall, named for Gordon Melody, state senator from San Miguel County, won one of the two Merit Awards given by the Albuquerque Chapter, AIA, at its annual awards banquet held early in December. (See page 9).

Jurors' Comments

The plan in particular was recommended for its non-regimented, informal grouping of the rooms around a corridor which, by virtue of its varied shape and occasional daylighting, becomes less a corridor than a place to meet and talk comfortably. The individual rooms are clearly expressed in the exterior form of the building. The whole group — dormitory, lounge, and dining hall — is arranged to form usable and pleasant spaces.

There was some criticism of the unnecessarily brutal forms of the exterior. In particular, the jury felt the architect had not taken advantage of corner views from the bed rooms which their loose disposition in plan would have permitted.



AND IN PLACE



UP



UP



UP

GO THE GIANT 114 FT. LONG.
14 FT. WIDE. 40 IN. DEEP, AND
94,000 LB. PRESTRESSED CON-
CRETE SINGLE TEE ROOF SEC-
TIONS ON THE ALBUQUERQUE
BOYS ACADEMY



HYDRO CONDUIT CORPORATION

2800 SECOND ST., SW • ALBUQUERQUE, NEW MEXICO

Specify Quality on Your Tile Jobs.
 Mosaic Wall and Floor Tile • Monarch Wall Tile
 Carlyle Quarry Tile • Crest Thin-Set
 Pecora Adhesives and Caulking

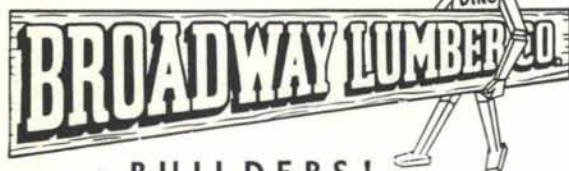
All represented in New Mexico by
Southwest Ceramic Dist.

DIVISION OF
NEW MEXICO MARBLE AND TILE CO., INC.
 243-5541 — 414 Second St., S.W. — Albuquerque

812 BROADWAY NE • DIAL 242-5221 • ALBUQUERQUE

SEE MY BOSS!

FRIENDLY FOLKS • FOLLO-THRU SERVICE



BROADWAY LUMBER CO.

**BUILDERS!
 CUT COSTS!**
 PROVEN STRENGTH — SELECT LUMBER

AUTHORIZED

FABRICATOR

SANFORD
Gri-P-Late
ROOF TRUSSES

INSTANT CABINETS • DOORS • WALL PANELS

Albuquerque

**BLUEPRINT
 COMPANY**

ALBUQUERQUE'S OLDEST BLUE
 PRINT COMPANY — SINCE 1928

BLUE PRINTS
 BLACK & WHITE PRINTS
 PHOTO COPIES
 CAMERA
 REPRODUCTIONS
 MULTILITH PRINTING

ALBUQUERQUE,
 NEW MEXICO

Exclusive Dealers For
KEUFFEL & ESSER

2 LOCATIONS
 514 4th St., N.W.
 CH 3-3521
 613 San Mateo, N.E.
 AL 5-8753

COMMON
BRICK
 FACE
BRICK

HOLLOW
 STRUCTURAL
TILE
 SCR and HOLLOW
BRICK

distributors for

acme
BRICK COMPANY

samples & literature
 on request

**KINNEY BRICK
 COMPANY, INC.**

P. O. Box 86
 Ph. 877-4550

Office at Brick & Tile Works
 5 Miles South on Second Street
 Albuquerque, New Mexico

**ALBUQUERQUE
 TESTING LABORATORY**

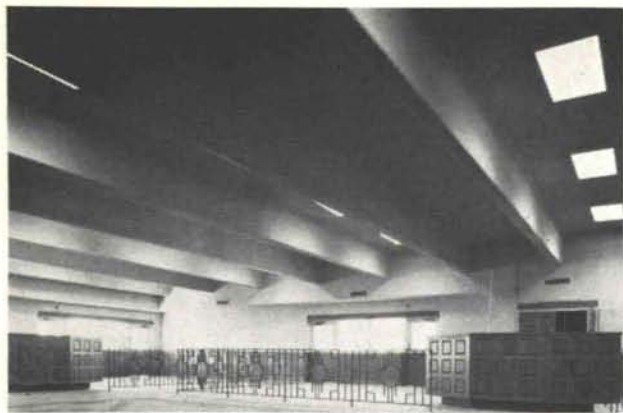
Sub-soil Investigations
 For Structural and Dam Foundations

**Two Drills and Crews now
 available for Prompt Service**

Laboratory Analysis and
 Evaluation of Construction Materials

**All work done under the supervision
 of Registered Professional Engineers**

532 Jefferson St., N.E. — P. O. Box 4101
 Phone AL 5-8916 Albuquerque
 Phone AL 5-1322 New Mexico



Part of 100,000 sq. ft. of Tee beam ceilings and floors supplied for the new Albuquerque Sunport terminal. Architect—William E. Burke, Jr.

1900 MENAUL ROAD N. E.

ALBUQUERQUE, NEW MEXICO 87106

(505) 345-2536



PRESTRESSED CONCRETE PRODUCTS, INC.

MANUFACTURERS OF ROOF AND FLOOR DECKS

THEY EXCEL IN

- ECONOMY • PERMANENCY • DURABILITY
- VERSATILITY • FLEXIBILITY
- and most important • FIRE RESISTANCE



New Mexico's only recognized member
**NATIONAL ASSOCIATION STORE FIXTURES
MANUFACTURERS**

Some example installations, all at CORONADO Center

- Henry's • Mandell's
- Judd Jewelry • Lynn's
- Bank of New Mexico

Your inquiries earnestly solicited

Customcraft Fixtures, Inc.

1215 Fourth St. N.W. (505) 247-9795
Albuquerque, New Mexico 87102

Dependable . . .

**SOUND, INTERCOM
AND POCKET PAGING
FOR EVERY BUILDING TYPE**

Our broad experience in this specialized field
is available to you. Contact us for general
planning help.

No obligation, of course.

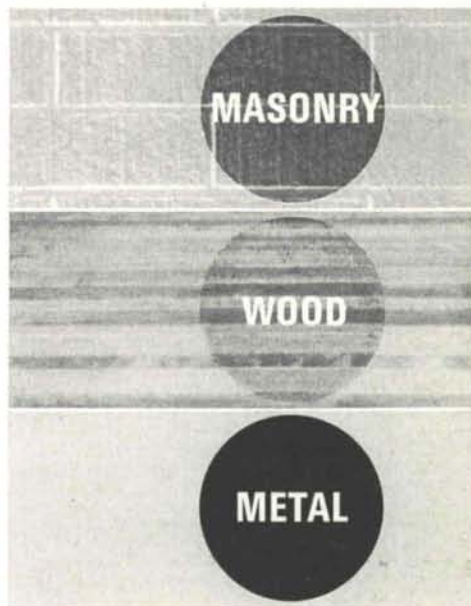
Executone OF NEW MEXICO

111-A CORNELL DR., S.E., ALBUQUERQUE, N. M. 87106
PHONE 242-4611

Flex-tile

An outstanding new two component coating that
actually out-performs baked enamels for hardness,
gloss, resistance to water, chemicals and stains

**MAY BE
APPLIED
BY BRUSH,
SPRAYER
OR ROLLER**



Another Quality
Product of . . .



2714 4th St., N.W.
P.O. Box 6086
Albuquerque,
New Mexico

FORMICA® v.i.p.*

vertical interior paneling



FORMICA® V.I.P.

vertical interior paneling is everything an interior paneling should be. It has all the good qualities you associate with FORMICA laminated plastic for horizontal surfaces — and more:

- a complete panel installation system
- easy to handle
- quick and easy to put in place
- economically priced; economical to install
- unlimited decorative possibilities
- adapts to any commercial or institutional setting
- easy maintenance
- long wearing

Distributed by



PHONE 344-2317

312 INDUSTRIAL NE P. O. BOX 1098
ALBUQUERQUE, NEW MEXICO

Pacific Press INC.

One example of the many styles of metal letters processed in

• BRONZE • • BRASS • & • ALUMINUM •
— STAINLESS STEEL —
TABLETS PLAQUES

Handcrafted, hand finished,
flawlessly executed to enhance
your architectural design

1212
Edith Blvd. N.E.
P. O. Box 848
Phone 243-5641

JAY GREAR
SIGNS & SPECIALTIES
INCORPORATED

Albuquerque
New Mexico
87103

HAND CRAFTED DOORS

- with mortise and tenon joints pinned through door
- we design and custom build doors to any dimension and/or specifications
- 4 varieties of wood available
- send for free catalogue displaying our complete line of our standard doors



The "INCA"
sunburst motif

Southwest Spanish Craftsmen Inc.

412 La Maderia — P. O. Box 1805 — (505) 982-1767
SANTA FE, NEW MEXICO

new mexico architecture nma

Published bi-monthly, by the New Mexico Society of Architects American Institute of Architects, a non-profit organization, 2745-A San Mateo Blvd. N.E., Albuquerque, N. M. 87110.

Editorial correspondence: All correspondence should be addressed to John P. Conron, P. O. Box 935, Santa Fe, New Mexico 87501.

Editorial Policy: Opinions expressed in all signed articles are those of the author and do not necessarily represent the official position of the New Mexico Society of Architects, A.I.A.

No responsibility will be assumed by the editor or publishing organization for unsolicited contributions. Return postage should accompany all unsolicited manuscripts.

Subscription rates: single copy 50c; one year \$2.50. Second class postage paid at Roswell, New Mexico.

Change of address: Notifications should be sent to N.M.A., Box 18, University Station Albuquerque, N. M. 87106 at least 45 days prior to effective date. Please send both old and new addresses.

Advertising correspondence: Requests for information and other correspondence should be addressed to W. M. Brittelle, Sr., 2745-A San Mateo Blvd. N.E., Albuquerque, N. M. 87110.

arm Member, Architects Regional Magazines, Official Publications of Units of The American Institute of Architects.

National advertising representatives: Martin and Hart, Inc.
25 West 43rd St., New York City 10036. Phone 212-LW 4-1290

INDEX TO FIRMS

Cooperating in the public relation program of the NMA magazine, making possible its publication and the page upon which their message may be found.

Albuquerque Blueprint Company	20
Albuquerque Gravel Products Company	6
Albuquerque Lumber Company	6
Albuquerque Testing Laboratory	20
Atlas Building Products Co.	4
Broadway Lumber Co.	20
Builder's Block & Stone Co., Inc.	14
Crego Block Co., Inc.	8
Customcraft Fixtures, Inc.	21
Excuteone of New Mexico	21
Gibson Lumber Company	23
Hanley Paint Mfg. Co., Inc.	6
Hunter-Hayes Elevator Co.	5
Hydro Conduit Corporation	19
Jay Grear, Incorporated	22
Kinney Brick Company, Inc.	20
Miller Metal Company	6
New Mexico Marble & Tile Co.	20
New Mexico Pipe Trades Industry Program	5
Office Interiors	4
Otto Edgar & Sons, Inc.	24
Portland Cement Association	2
Prestressed Concrete Products, Inc.	21
Public Service Co. of New Mexico	14
Rio Grande Steel Products Company, Inc.	8
Southwest Spanish Craftsmen, Inc.	22
Southwest Vermiculite Co.	23
Southern Union Gas Co.	7
Stryco Sales, Inc.	22
Wellborn Paint Mfg. Co.	21

**BUILDING
WITH BLOCK?**

**HEAT FOR LESS
COOL FOR LESS**

**FILL THESE
HOLES WITH**

ZONOLITE MASONRY FILL INSULATION

Because Zonolite Masonry Fill Insulation cuts thermal transmission (heat and cold) through your walls up to 50% or more, it pays for itself in three to four years in decreased fuel bills. From then on, just add the savings to your profits. Besides saving you money, Zonolite Masonry Fill Insulation also keeps your customers cooler in summer, warmer in winter. It reduces the loudness of sound transmitted through your walls by 20% to 31%, too! And, as an extra added attraction, its installed cost is low—as low as 10¢ per sq. ft. For complete information, send for booklet MF-53.

Southwest Vermiculite Co.

5119 Edith Blvd. N.W., Albuquerque, N. M.
345-1633

BEFORE YOU BUILD OR REMODEL...

Get the facts about
Armstrong
SIDING



LABOR SAVING EXTERIOR FINISH GOES UP FAST, REDUCES WASTE

Made from tough wood fiber bonded with thermoplastic resin, Armstrong siding offers many advantages. It saws and nails easily . . . it resists buckling, bowing and splitting. There's no grain, no knots, and practically no waste. Two factory-applied prime paint coats save time and money.

3 DESIGNS

8, 10 and 12 inch horizontal lap siding in 16' lengths; vertical grooved and vertical plain panels in 4 x 8' sheets. All 1/2" thick. All sizes always in stock.



4100 FOURTH STREET, N.W.
344-3434

University of New Mexico Librar
University of New Mexico
Albuquerque, N.M.

Bulk Rate
U. S. Postage
PAID
Roswell, N. M.
Permit No. 47

Question.....

WHEN SHOULD AN OTTO INLAI REPRESENTATIVE BE CALLED?

Answer.....

JUST AS SOON AS YOU START PLANNING THAT NEW BUILDING



A SPECIALIST FROM EDGAR D. OTTO & SON INLAI DIVISION CAN BE MOST HELPFUL IF CALLED IN DURING THE EARLY STAGES OF CONSTRUCTION PLANNING. HE CAN ADVISE ABOUT THE MANY VERSATILE USES OF EXPOSED AGGREGATE CONCRETE PANELS AND PRECAST SPECIALTIES; TELL OF COST SAVING METHODS OF APPLICATION.

CREATIVITY IN CONCRETE
THAT'S **Inlai** BY OTTO



EDGAR D. OTTO & SON, INC.

2700 Second Street, Southwest • P.O. Box 387 Albuquerque, New Mexico • Phone 243-6721

LAVALITE Concrete Masonry Units • **EXTRALITE** Concrete Masonry Units

Inlai EPOXY MATRIX EXPOSED AGGREGATE WALL TREATMENTS **RMU** RESIDENTIAL MASONRY UNITS

Cast Stone and Pre-Cast Concrete • Masonry Wall Reinforcement

Inlai Exposed Aggregate Facing Panels • **DESERT CANYON STONE**