

Spring 4-1-1938

# Comparison of Navajo and Pueblo Indians in Musical Talent

Shlanta A. Boghdan

Follow this and additional works at: [https://digitalrepository.unm.edu/psy\\_etds](https://digitalrepository.unm.edu/psy_etds)



Part of the [Psychology Commons](#)

---

## Recommended Citation

Boghdan, Shlanta A.. "Comparison of Navajo and Pueblo Indians in Musical Talent." (1938). [https://digitalrepository.unm.edu/psy\\_etds/229](https://digitalrepository.unm.edu/psy_etds/229)

This Thesis is brought to you for free and open access by the Electronic Theses and Dissertations at UNM Digital Repository. It has been accepted for inclusion in Psychology ETDs by an authorized administrator of UNM Digital Repository. For more information, please contact [disc@unm.edu](mailto:disc@unm.edu).

UNIVERSITY OF NEW MEXICO-UNIVERSITY LIBRARIES



A14429 087284

SHILANTAR  
—  
COMPARI  
SON  
OF  
NAYAJE  
AND  
PUEBLO  
INDIANS  
IN  
MUSICAL  
TALENT

378.  
789  
Un 30s  
1938  
600.2



LIBRARY  
of  
THE UNIVERSITY OF  
NEW MEXICO



CLASS  
378.789

BOOK  
Un30s  
1938  
cop. 2

57612



# DATE DUE

NOV 1 1974

RECD UNM NOV-8'74

RECD UNM AUG 15 '79

OK - 31

JUL-3'80

GAYLORD

PRINTED IN U.S.A.



CORPORATE

PAGE CONTENT



# UNIVERSITY OF NEW MEXICO LIBRARY

## MANUSCRIPT THESES

Unpublished theses submitted for the Master's and Doctor's degrees and deposited in the University of New Mexico Library are open for inspection, but are to be used only with due regard to the rights of the authors. Bibliographical references may be noted, but passages may be copied only with the permission of the authors, and proper credit must be given in subsequent written or published work. Extensive copying or publication of the thesis in whole or in part requires also the consent of the Dean of the Graduate School of the University of New Mexico.

This thesis by ... Boghdan A. Shlanta .....  
has been used by the following persons, whose signatures attest their acceptance of the above restrictions.

A Library which borrows this thesis for use by its patrons is expected to secure the signature of each user.

NAME AND ADDRESS

DATE

W. D. Laird	Univ. of Ariz	10/10/74
Martin P. Hogan	Univ of N.Mex	11/2/85



## MANUSCRIPT THESIS

Unpublished theses submitted for the Affairs and Education  
 and deposited in the University of New Mexico Library are  
 open for inspection, but are to be used only with the regard to the  
 rights of the author. Bibliographical references may be made, but  
 passages may be copied only with the permission of the author, and  
 proper credit must be given in subsequent written or printed  
 work. Extensive copying or publication of the thesis in whole or in  
 part requires also the consent of the Dean of the Graduate School  
 of the University of New Mexico.

This thesis by Ernest J. Bogdan  
 has been used by the following persons, who have then their  
 acceptance of the above restrictions.

A library which borrows this thesis for use of its patrons is  
 expected to secure the signature of each user.

DATE

NAME AND ADDRESS

W. J. Cook  
 M. J. Bogdan  
 10/1/44



COMPARISON OF NAVAJO AND PUEBLO INDIANS  
IN MUSICAL TALENT

A THESIS

PRESENTED TO

the Faculty of the Department of Psychology  
University of New Mexico

In Partial Fulfillment  
of the Requirements for the Degree  
Master of Arts

By

Boghdan A. Shlanta

June 1938



OFFICE OF THE SECRETARY OF THE ARMY

WASHINGTON, D. C.

MEMORANDUM

TO THE SECRETARY OF THE ARMY

FROM THE SECRETARY OF THE ARMY

IN REPLY TO

OF THE SECRETARY OF THE ARMY

DATE

RECEIVED  
JAN 10 1953

RECEIVED

JAN 10 1953

RECEIVED

RECEIVED



378.789  
Un 309  
1938  
cop. 2

This thesis, directed and approved by the candidate's committee, has been accepted by the Graduate Committee of the University of New Mexico in partial fulfillment of the requirements for the degree of

MASTER OF ARTS

*J. P. Hammond*  
DEAN

April 1, 1938  
DATE

9/26/38 Dec. 1/10

Thesis committee

*B. F. Haight*  
CHAIRMAN

*Geo. W. Peterson*

*J. P. Reid*







## TABLE OF CONTENTS

CHAPTER	PAGE
 I. INTRODUCTION	
Statement of the problem . . . . .	I
Importance of the problem . . . . .	2
Review of previous related studies . . . . .	3
Procedure . . . . .	4
 II. DATA	
Scoring . . . . .	7
Raw scores for seventh grade Navajo boys . . . . .	8
Raw scores for seventh grade Navajo girls . . . . .	10
Raw scores for seventh grade Pueblo boys . . . . .	12
Raw scores for seventh grade Pueblo girls . . . . .	15
Raw scores for eighth grade Navajo boys . . . . .	18
Raw scores for eighth grade Navajo girls . . . . .	20
Raw scores for eighth grade Pueblo boys . . . . .	22
Raw scores for eighth grade Pueblo girls . . . . .	24
Raw scores for ninth grade Navajo boys . . . . .	26
Raw scores for ninth grade Navajo girls . . . . .	28
Raw scores for ninth grade Pueblo boys . . . . .	30
Raw scores for ninth grade Pueblo girls . . . . .	32
Raw scores for tenth grade Navajo boys . . . . .	34
Raw scores for tenth grade Navajo girls . . . . .	35



# STATE BOARD

DEPT. OF

I. Introduction  
The purpose of this report is to provide a comprehensive overview of the current state of the industry. This section will discuss the major trends, challenges, and opportunities facing the sector. The report is organized into several parts, each focusing on a different aspect of the industry. The first part will provide a general overview, while the subsequent parts will delve into more specific areas of interest.

## II. Data

The following table presents the key data points for the industry over the past five years. The data is categorized by year, with each year's data presented in a separate row. The columns represent different metrics, including revenue, profit, and market share. The data shows a general upward trend in most metrics over the period, with some fluctuations in the early years. The most significant growth was observed in the revenue and profit metrics, which both increased steadily over the five-year period. The market share data indicates a competitive environment, with several key players maintaining their positions while others have emerged as new contenders.

Year	Revenue	Profit	Market Share
2015	100	20	15%
2016	110	22	16%
2017	120	24	17%
2018	130	26	18%
2019	140	28	19%



## CHAPTER

## II. (Continued)

## PAGE

Raw scores for tenth grade Pueblo boys . . . . .	36
Raw scores for tenth grade Pueblo girls . . . . .	37
Raw scores for eleventh grade Navajo boys. . . . .	38
Raw scores for eleventh grade Navajo girls . . . . .	40
Raw scores for eleventh grade Pueblo boys . . . . .	41
Raw scores for eleventh grade Pueblo girls . . . . .	42
Raw scores for twelfth grade Navajo boys . . . . .	43
Raw scores for twelfth grade Navajo girls . . . . .	45
Raw scores for twelfth grade Pueblo boys . . . . .	46
Raw scores for twelfth grade Pueblo girls . . . . .	47

## III. RESULTS

Comparison of Navajo and Pueblo in the seventh grade. . .	48
Comparison of Navajo and Pueblo in the eighth grade . . .	50
Comparison of Navajo and Pueblo in the ninth grade . . .	52
Comparison of Navajo and Pueblo in the tenth grade , . .	54
Comparison of Navajo and Pueblo in the eleventh grade . .	56
Comparison of Navajo and Pueblo in the twelfth grade . .	58
Comparison of Navajo and Pueblo girls . . . . .	60
Comparison of Navajo and Pueblo boys . . . . .	62
Comparison of Pueblo boys and girls . . . . .	64
Comparison of Navajo boys and girls . . . . .	66
Comparison of Pueblo boys and Navajo girls . . . . .	68
Comparison of Pueblo girls and Navajo boys . . . . .	70







## CHAPTER

## PAGE

## IV. SUMMARY OF RESULTS

Navajos compared with Pueblos by grade . . . . .	72
Navajo and Pueblo girls compared with Navajo and Pueblo boys . . . . .	72
All boys compared with all girls by tribe . . . . .	73
Navajo boys compared with Pueblo girls and Pueblo boys compared with Navajo girls . . . . .	73
CONCLUSION . . . ; . . . . .	74



IV. SUMMARY OF FINDINGS

- 1. The investigation was conducted in accordance with the plan of work approved by the Board of Directors on 1/15/54.
- 2. The investigation was conducted in accordance with the plan of work approved by the Board of Directors on 1/15/54.
- 3. The investigation was conducted in accordance with the plan of work approved by the Board of Directors on 1/15/54.
- 4. The investigation was conducted in accordance with the plan of work approved by the Board of Directors on 1/15/54.
- 5. The investigation was conducted in accordance with the plan of work approved by the Board of Directors on 1/15/54.
- 6. The investigation was conducted in accordance with the plan of work approved by the Board of Directors on 1/15/54.
- 7. The investigation was conducted in accordance with the plan of work approved by the Board of Directors on 1/15/54.
- 8. The investigation was conducted in accordance with the plan of work approved by the Board of Directors on 1/15/54.
- 9. The investigation was conducted in accordance with the plan of work approved by the Board of Directors on 1/15/54.
- 10. The investigation was conducted in accordance with the plan of work approved by the Board of Directors on 1/15/54.

REPORT OF THE BOARD OF DIRECTORS

1954



# LIST OF TABLES

TABLE	PAGE
I-XXIV. Raw Scores by grade, tribe, and sex . . . . .	8-47
XXV. Tonal-memory for the seventh grade . . . . .	48
XXVI. Pitch for the seventh grade . . . . .	48
XXVII. Intensity for the seventh grade . . . . .	48
XXVIII. Time for the seventh grade . . . . .	49
XXIX. Rhythm for the seventh grade . . . . .	49
XXX. Tonal-memory for the eighth grade . . . . .	50
XXXI. Pitch for the eighth grade . . . . .	50
XXXII. Intensity for the eighth grade . . . . .	50
XXXIII. Time for the eighth grade . . . . .	51
XXXIV. Rhythm for the eighth grade . . . . .	51
XXXV. Tonal-memory for the ninth grade . . . . .	52
XXXVI. Pitch for the ninth grade . . . . .	52
XXXVII. Intensity for the ninth grade . . . . .	52
XXXVIII. Time for the ninth grade . . . . .	53
XXXIX. Rhythm for the ninth grade . . . . .	53
XL. Tonal-memory for the tenth grade . . . . .	54
XLI. Pitch for the tenth grade . . . . .	54
XLII. Intensity for the tenth grade . . . . .	54
XLIII. Time for the tenth grade . . . . .	55
XLIV. Rhythm for the tenth grade . . . . .	55
XLV. Tonal-memory for the eleventh grade . . . . .	56



# LIST OF TABLES

TABLE	
1-10	.....
11	.....
12	.....
13	.....
14	.....
15	.....
16	.....
17	.....
18	.....
19	.....
20	.....
21	.....
22	.....
23	.....
24	.....
25	.....
26	.....
27	.....
28	.....
29	.....
30	.....
31	.....
32	.....
33	.....
34	.....
35	.....
36	.....
37	.....
38	.....
39	.....
40	.....
41	.....
42	.....
43	.....
44	.....
45	.....
46	.....
47	.....
48	.....
49	.....
50	.....



TABLE	PAGE
XLVI. Pitch for the eleventh grade . . . . .	56
XLVII. Intensity for the eleventh grade . . . . .	56
XLVIII. Time for the eleventh grade . . . . .	57
XLIX. Rhythm for the eleventh grade . . . . .	57
L. Tonal-memory for the twelfth grade . . . . .	58
LI. Pitch for the twelfth grade . . . . .	58
LII. Intensity for the twelfth grade . . . . .	58
LIII. Time for the twelfth grade . . . . .	59
LIV. Rhythm for the twelfth grade . . . . .	59
LV. Comparison of girls in tonal-memory . . . . .	60
LVI. Comparison of girls in pitch . . . . .	60
LVII. Comparison of girls in intensity . . . . .	60
LVIII. Comparison of girls in time . . . . .	61
LXIX. Comparison of girls in rhythm . . . . .	61
LX. Comparison of boys in tonal-memory . . . . .	62
LXI. Comparison of boys in pitch . . . . .	62
LXII. Comparison of boys in intensity . . . . .	62
LXIII. Comparison of boys in time . . . . .	63
LXIV. Comparison of boys in rhythm . . . . .	63
LXV. Comparison of Pueblo boys and girls in tonal- memory . . . . .	64
LXVI. Comparison of Pueblo boys and girls in pitch . .	64
LXVII. Comparison of Pueblo boys and girls in intensity	64







## TABLE

## PAGE

LXVIII.	Comparison of Pueblo boys and girls in time . . .	65
LXXIX.	Comparison of Pueblo boys and girl in rhythm . .	65
LXX.	Comparison of Navajo boys and girls in tonal- memory . . . . .	66
LXXI.	Comparison of Navajo boys and girls in Pitch . .	66
LXXII.	Comparison of Navajo boys and girls in intensity.	66
LXXIII.	Comparison of Navajo boys and girls in time . . .	67
LXXIV.	Comparison of Navajo boys and girls in rhythm . .	67
LXXV.	Comparison of Pueblo boys and Navajo girls in . . tonal-memory . . . . .	68
LXXVI.	Comparison of Pueblo boys and Navajo girls in pitch . . . . .	68
LXXVII.	Comparison of Pueblo boys and Navajo girls in intensity . . . . .	68
LXXVIII.	Comparison of Pueblo boys and Navajo girls in time . . . . .	69
LXXIX.	Comparison of Pueblo boys and Navajo girls in rhythm . . . . .	69
LXXX.	Comparison of Pueblo girls and Navajo boys in tonal-memory . . . . .	70
LXXXI.	Comparison of Pueblo girls and Navajo boys in pitch . . . . .	70



TABLE	
1	LIST I. Comparison of results from the study in the . . .
2	LIST II. Comparison of results from the study in the . . .
3	LIST III. Comparison of results from the study in the . . .
4	LIST IV. Comparison of results from the study in the . . .
5	LIST V. Comparison of results from the study in the . . .
6	LIST VI. Comparison of results from the study in the . . .
7	LIST VII. Comparison of results from the study in the . . .
8	LIST VIII. Comparison of results from the study in the . . .
9	LIST IX. Comparison of results from the study in the . . .
10	LIST X. Comparison of results from the study in the . . .
11	LIST XI. Comparison of results from the study in the . . .
12	LIST XII. Comparison of results from the study in the . . .
13	LIST XIII. Comparison of results from the study in the . . .
14	LIST XIV. Comparison of results from the study in the . . .
15	LIST XV. Comparison of results from the study in the . . .
16	LIST XVI. Comparison of results from the study in the . . .
17	LIST XVII. Comparison of results from the study in the . . .
18	LIST XVIII. Comparison of results from the study in the . . .
19	LIST XIX. Comparison of results from the study in the . . .
20	LIST XX. Comparison of results from the study in the . . .
21	LIST XXI. Comparison of results from the study in the . . .
22	LIST XXII. Comparison of results from the study in the . . .
23	LIST XXIII. Comparison of results from the study in the . . .
24	LIST XXIV. Comparison of results from the study in the . . .
25	LIST XXV. Comparison of results from the study in the . . .
26	LIST XXVI. Comparison of results from the study in the . . .
27	LIST XXVII. Comparison of results from the study in the . . .
28	LIST XXVIII. Comparison of results from the study in the . . .
29	LIST XXIX. Comparison of results from the study in the . . .
30	LIST XXX. Comparison of results from the study in the . . .



## TABLE

## PAGE

LXXXII. Comparison of Pueblo girls and Navajo	
boys in intensity . . . . .	70
LXXXIII. Comparison of Pueblo girls and Navajo boys	
in time . . . . .	71
LXXXIV. Comparison of Pueblo girls and Navajo boys	
in rhythm . . . . .	71



# CORPORATE FINANCE

## CHAPTER 10

10-1

1. The firm's operating income is \$100 million.

2. The firm's operating expenses are \$80 million.

3. The firm's operating income is \$20 million.

4. The firm's operating income is \$10 million.

5. The firm's operating income is \$5 million.

6. The firm's operating income is \$2 million.



A COMPARISON OF NAVAJO AND PUEBLO INDIANS  
IN MUSICAL TALENT

CHAPTER I

INTRODUCTION

Statement of the problem. The object of this investigation is to make a comparison in musical talent of the Navajo and Pueblo Indians from the seventh to the twelfth grade inclusive. Since these two tribes have different characteristics,<sup>1</sup> one purpose is to determine the differences in musical talent which may exist. Although some of the Indian tribes have been tested by the Seashore Measures Of Musical Talent,<sup>2</sup> no comparison has been made of these two tribes.

---

1

E. L. Hewett, Ancient Life In The American Southwest, Indianapolis: 1930, Bobbs-Merrill, 392

2

T. R. Garth, Race Psychology, New York: McGraw-Hill Book Co., 1931, 137-155.



The purpose of this study is to determine the effect of the treatment on the response of the subjects. The subjects were divided into two groups, one receiving the treatment and the other receiving the control. The results of the study are as follows:

1. The treatment group showed a significant improvement in the response of the subjects.
2. The control group showed no significant improvement in the response of the subjects.



Importance of the problem. In the reorganization of the Indian Vocational Schools, the administration is anxious to secure comparative data for child adjustment. Music organizations as band, orchestra, and other music groups can be made more effective if the data are available to those who build the school curricula. It may be that the data will do much to avoid disappointment in classification, to lessen expense, and to aid in the direction and guidance of pupils.

Thorndike states that equal training increases differences in acquired traits for those unequally endowed.<sup>1</sup> It may help to determine whether extended musical training, now commonly measured by grades, is justifiable for those not musically endowed. Unless pupils can be classified into groups somewhat homogeneous, it is impossible to keep each pupil busy at his highest level of achievement.<sup>2</sup>

---

<sup>1</sup>E. L. Thorndike, Educational Psychology, New York: Bureau of Publication, Teachers College, Columbia Univ. III, 1914, 305-306

<sup>2</sup>C. J. McCauley, Professionalized Study of Public School Music, Knoxville, Tennessee, Avent Publisher, 1932, 195







Review of previous related studies. The Seashore Measures Of Musical Talent was used in this study because previous investigators, for example, Farnsworth, Mursell, Stanton, and others have found it to be both valid and reliable. Farnsworth<sup>1</sup> states that it has sufficient reliability for certain diagnostic purposes. Liberal arts college and conservatory of music students were investigated by Mursell using these tests and he found that the latter scored higher as a group than did the former.<sup>2</sup> We may assume that attendance at a conservatory of music in preference to a liberal arts college is in general an indication of superior musical talent. Stanton in comparing the scores of students who completed the four year course at the Eastman School of Music with those who did not, found that students who scored in the lowest percentiles were not likely to be successful in completing the course. As a result of this investigation Measures of Musical Talent by Seashore were adopted as part of the entrance requirements of the Eastman School.<sup>3</sup>

<sup>1</sup> P. R. Farnsworth, A Historical, critical, experimental, study of the Seashore-Kwalwasser Test Battery. Genetic Psych. Monograph, IX, (May, 1931), 229-310.

<sup>2</sup> J. L. Mursell, Measuring Musical Ability and Achievement. A study of the correlation of Seashore Test Scores and other variables. Journal of Ed. Research, XXV, (February, 1932) 116-126.

<sup>3</sup> H. M. Stanton, Psychological Tests a Factor in admission to the Eastman School. School and Society, (December, 1929) 889-91.







Prediction of success in music was made by Brennan and he concludes that the students with superior musical records tend to rank higher in performance than those of average musical talent or below.<sup>1</sup> Selection of members for instrumental organizations such as Junior high school preparatory orchestra, advanced orchestra, and Senior high school advanced orchestra, was investigated by Larson. He concludes that the value of the tests for prediction of success in instrumental music was increasingly influential for success at each higher stage of achievement.<sup>2</sup>

Procedure. Two groups of students were tested, namely, 319 Pueblo Indians and 212 Navajo Indians, selected at random from the seventh to the twelfth grade inclusive, from the Albuquerque Indian School, Albuquerque, New Mexico. One hundred five Navajo Indians were tested at Ft. Wingate Indian School, Ft. Wingate, New Mexico, bringing the total number of Navajo Indians to 317.

---

<sup>1</sup> F. M. Brennan, The relation between musical capacity and performance, Psychological Monograph, XXXVI, (1926) 190-248.

<sup>2</sup> W. S. Larson, Measurement of musical talent for prediction of Success in instrumental music. Iowa City: Univ. of Iowa, Thesis, 1928.



Prediction of success in music was made by Graham and his  
 committee that the students with superior musical records were to  
 rank higher in generalization than those of average musical ability or  
 below. Selection of members for instrumental or chamber groups as  
 Junior High School Symphony Orchestra, Advanced Orchestra, and  
 Senior High School Advanced Orchestra, was influenced by Graham.  
 He concluded that the value of the tests for prediction of success  
 in instrumental music was somewhat limited for students of  
 such higher state of achievement.

Procedure. The groups of students were tested, namely,  
 319 Pueblo Indians and 212 Navajo Indians, selected at random from  
 the seventh to the twelfth grade inclusive, from the Albuquerque  
 Indian School, Albuquerque, New Mexico. One hundred five Navajo  
 Indians were tested at the Pueblo Indian School, Taos, New  
 Mexico, bringing the total number of Navajo Indians to 317.

1. F. M. Graham, The relation between musical capacity and  
 performance, Psychological Monographs, XXV, (1935) 100-218.
2. W. S. Larson, Measurement of musical ability for prediction  
 of success in instrumental music. Lower Grades Study of Music, Illinois,  
 1930.



The tests in Measures of Musical Talent by Seashore were given in order as follows: pitch,<sup>1</sup> intensity,<sup>2</sup> time,<sup>3</sup> tonal memory,<sup>4</sup> and rhythm.<sup>5</sup> The phonograph used for playing the disc records was calibrated for proper speed and maintained in first class operating condition. Each student was supplied with a mimeographed blank on which he wrote his responses.

The tests were given to the students in groups of 25 and 35 seated in such a fashion that all might hear the disc records as played on the phonograph. Directions were given each group as stated in the manual of instructions.<sup>6</sup> In order to avoid scratching a new needle was used after each record. A preliminary trial was given to insure

---

<sup>1</sup> C. E. Seashore, Measures of Musical Talent, Disc Records, Cat. No. 42060-1, Sense of Pitch, No. 1A and 1B, Stoelting Co., Chicago, Ill.

<sup>2</sup> Ibid., Sense of Intensity, No. 2A and 2B.

<sup>3</sup> Ibid., Sense of Time, No. 3A and 3B.

<sup>4</sup> Ibid., Sense of Tonal Memory, No. 5A and 5B.

<sup>5</sup> Ibid., Sense of Rhythm, No. 6A and 6B.

<sup>6</sup> C. E. Seashore, Manual of Instructions, Measures of Musical Talent, Chicago, Ill., C. H. Stoelting Co.







as far as possible an understanding of the directions. Visual interpretation of measures in rhythm, tonal memory, and pitch were given. The groups were quiet and no undue feeling of nervousness was evident. The testing periods were planned for 90 minutes without interruptions. Each 90 minute period was so arranged that a few minutes for rest were allowed between records.



as far as possible an understanding of the situation. Visual  
interpretation of movement in rhythm, tempo, melody, and pitch were  
given. The groups were asked to make a record of their own  
was evident. The reading periods were allowed for 10 minutes when  
and interruptions. Each 30 minute period was an average of 15  
two minutes for rest were allowed between records.



## CHAPTER II

### DATA

Scoring. The Measures of Musical Talent by Seashore eliminate many usual difficulties in scoring as they are objective and free from personal opinion.<sup>1</sup> Erasures and alterations were accepted but illegible papers were discarded.

Three of the tests, pitch, intensity, and time, call for 100 responses, while the other two, rhythm, and tonal memory, call for 50 responses each. In reading the raw scores it must be borne in mind that scores were recorded in terms of total number of correct responses.

---

<sup>1</sup> C. E. Seashore, Psychology of Musical Talent. New York: Silver Burdett and Co., 1919. 288.



1. The first of these is the fact that the

data used in the analysis is not the same as the

data used in the analysis of the first two papers.

2. The second of these is the fact that the

data used in the analysis is not the same as the

data used in the analysis of the first two papers.

3. The third of these is the fact that the

data used in the analysis is not the same as the

data used in the analysis of the first two papers.

RECEIVED BOND

1. The first of these is the fact that the  
data used in the analysis is not the same as the  
data used in the analysis of the first two papers.



TABLE I. RAW SCORES FOR THE SEVENTH GRADE

## NAVAJO BOYS

Pitch	Intensity	Time	Tonal-memory	Rhythm
41	54	40	07	24
57	48	46	13	30
51	82	67	14	27
63	67	59	23	35
61	52	70	18	27
58	81	79	18	31
62	53	65	19	22
64	52	75	23	30
59	75	79	09	34
57	44	64	15	22
79	41	55	17	26
62	34	75	16	40
61	43	62	13	27
48	56	44	14	22
17	38	44	08	24
43	63	44	16	28
54	39	65	25	30
49	57	60	11	36
52	63	76	15	31
40	53	81	15	40
51	67	40	09	30



Tissue				Tissue			
11	12	13	14	15	16	17	18
11	12	13	14	15	16	17	18
19	20	21	22	23	24	25	26
27	28	29	30	31	32	33	34
35	36	37	38	39	40	41	42
43	44	45	46	47	48	49	50
51	52	53	54	55	56	57	58
59	60	61	62	63	64	65	66
67	68	69	70	71	72	73	74
75	76	77	78	79	80	81	82
83	84	85	86	87	88	89	90
91	92	93	94	95	96	97	98
99	100	101	102	103	104	105	106
107	108	109	110	111	112	113	114
115	116	117	118	119	120	121	122
123	124	125	126	127	128	129	130
131	132	133	134	135	136	137	138
139	140	141	142	143	144	145	146
147	148	149	150	151	152	153	154
155	156	157	158	159	160	161	162
163	164	165	166	167	168	169	170
171	172	173	174	175	176	177	178
179	180	181	182	183	184	185	186
187	188	189	190	191	192	193	194
195	196	197	198	199	200	201	202
203	204	205	206	207	208	209	210
211	212	213	214	215	216	217	218
219	220	221	222	223	224	225	226
227	228	229	230	231	232	233	234
235	236	237	238	239	240	241	242
243	244	245	246	247	248	249	250
251	252	253	254	255	256	257	258
259	260	261	262	263	264	265	266
267	268	269	270	271	272	273	274
275	276	277	278	279	280	281	282
283	284	285	286	287	288	289	290
291	292	293	294	295	296	297	298
299	300	301	302	303	304	305	306
307	308	309	310	311	312	313	314
315	316	317	318	319	320	321	322
323	324	325	326	327	328	329	330
331	332	333	334	335	336	337	338
339	340	341	342	343	344	345	346
347	348	349	350	351	352	353	354
355	356	357	358	359	360	361	362
363	364	365	366	367	368	369	370
371	372	373	374	375	376	377	378
379	380	381	382	383	384	385	386
387	388	389	390	391	392	393	394
395	396	397	398	399	400	401	402
403	404	405	406	407	408	409	410
411	412	413	414	415	416	417	418
419	420	421	422	423	424	425	426
427	428	429	430	431	432	433	434
435	436	437	438	439	440	441	442
443	444	445	446	447	448	449	450
451	452	453	454	455	456	457	458
459	460	461	462	463	464	465	466
467	468	469	470	471	472	473	474
475	476	477	478	479	480	481	482
483	484	485	486	487	488	489	490
491	492	493	494	495	496	497	498
499	500	501	502	503	504	505	506
507	508	509	510	511	512	513	514
515	516	517	518	519	520	521	522
523	524	525	526	527	528	529	530
531	532	533	534	535	536	537	538
539	540	541	542	543	544	545	546
547	548	549	550	551	552	553	554
555	556	557	558	559	560	561	562
563	564	565	566	567	568	569	570
571	572	573	574	575	576	577	578
579	580	581	582	583	584	585	586
587	588	589	590	591	592	593	594
595	596	597	598	599	600	601	602
603	604	605	606	607	608	609	610
611	612	613	614	615	616	617	618
619	620	621	622	623	624	625	626
627	628	629	630	631	632	633	634
635	636	637	638	639	640	641	642
643	644	645	646	647	648	649	650
651	652	653	654	655	656	657	658
659	660	661	662	663	664	665	666
667	668	669	670	671	672	673	674
675	676	677	678	679	680	681	682
683	684	685	686	687	688	689	690
691	692	693	694	695	696	697	698
699	700	701	702	703	704	705	706
707	708	709	710	711	712	713	714
715	716	717	718	719	720	721	722
723	724	725	726	727	728	729	730
731	732	733	734	735	736	737	738
739	740	741	742	743	744	745	746
747	748	749	750	751	752	753	754
755	756	757	758	759	760	761	762
763	764	765	766	767	768	769	770
771	772	773	774	775	776	777	778
779	780	781	782	783	784	785	786
787	788	789	790	791	792	793	794
795	796	797	798	799	800	801	802
803	804	805	806	807	808	809	810
811	812	813	814	815	816	817	818
819	820	821	822	823	824	825	826
827	828	829	830	831	832	833	834
835	836	837	838	839	840	841	842
843	844	845	846	847	848	849	850
851	852	853	854	855	856	857	858
859	860	861	862	863	864	865	866
867	868	869	870	871	872	873	874
875	876	877	878	879	880	881	882
883	884	885	886	887	888	889	890
891	892	893	894	895	896	897	898
899	900	901	902	903	904	905	906
907	908	909	910	911	912	913	914
915	916	917	918	919	920	921	922
923	924	925	926	927	928	929	930
931	932	933	934	935	936	937	938
939	940	941	942	943	944	945	946
947	948	949	950	951	952	953	954
955	956	957	958	959	960	961	962
963	964	965	966	967	968	969	970
971	972	973	974	975	976	977	978
979	980	981	982	983	984	985	986
987	988	989	990	991	992	993	994
995	996	997	998	999	1000	1001	1002



TABLE I. (CONTINUED)

Pitch	Intensity	Time	Tonal-memory	Rhythm
52	45	60	17	33
54	48	56	10	30
49	56	58	20	30
56	68	64	30	31
69	43	68	09	28
56	60	62	16	29
49	72	78	15	34
45	88	76	22	37
49	45	58	19	27
67	51	58	10	30
54	78	68	21	27
80	81	78	11	41
56	75	77	16	25
70	85	81	19	32
39	43	62	10	17
51	65	67	16	33



TABLE I. (CONTINUED)

Wavelength	Frequency	Time	Intensity	Wavelength
25	12	40	15	25
26	13	45	15	26
27	14	50	15	27
28	15	55	15	28
29	16	60	15	29
30	17	65	15	30
31	18	70	15	31
32	19	75	15	32
33	20	80	15	33
34	21	85	15	34
35	22	90	15	35
36	23	95	15	36
37	24	100	15	37
38	25	105	15	38
39	26	110	15	39
40	27	115	15	40
41	28	120	15	41
42	29	125	15	42
43	30	130	15	43
44	31	135	15	44
45	32	140	15	45
46	33	145	15	46
47	34	150	15	47
48	35	155	15	48
49	36	160	15	49
50	37	165	15	50
51	38	170	15	51
52	39	175	15	52
53	40	180	15	53
54	41	185	15	54
55	42	190	15	55
56	43	195	15	56
57	44	200	15	57
58	45	205	15	58
59	46	210	15	59
60	47	215	15	60
61	48	220	15	61
62	49	225	15	62
63	50	230	15	63
64	51	235	15	64
65	52	240	15	65
66	53	245	15	66
67	54	250	15	67
68	55	255	15	68
69	56	260	15	69
70	57	265	15	70
71	58	270	15	71
72	59	275	15	72
73	60	280	15	73
74	61	285	15	74
75	62	290	15	75
76	63	295	15	76
77	64	300	15	77
78	65	305	15	78
79	66	310	15	79
80	67	315	15	80
81	68	320	15	81
82	69	325	15	82
83	70	330	15	83
84	71	335	15	84
85	72	340	15	85
86	73	345	15	86
87	74	350	15	87
88	75	355	15	88
89	76	360	15	89
90	77	365	15	90
91	78	370	15	91
92	79	375	15	92
93	80	380	15	93
94	81	385	15	94
95	82	390	15	95
96	83	395	15	96
97	84	400	15	97
98	85	405	15	98
99	86	410	15	99
100	87	415	15	100



TABLE II. RAW SCORES FOR THE SEVENTH GRADE

## NAVAJO GIRLS

Pitch	Intensity	Time	Tonal-memory	Rhythm
67	77	77	20	33
51	68	48	10	21
52	62	52	10	26
39	51	64	20	32
51	56	67	20	25
44	54	56	16	29
74	69	59	17	23
46	45	56	15	25
61	38	55	13	25
42	53	60	19	29
59	77	52	15	31
61	56	72	18	32
50	49	55	14	31
56	45	49	12	23
45	40	45	05	23
64	41	56	17	36
56	49	65	11	26
56	57	60	10	37
29	49	54	12	26
36	74	33	15	22



TABLE II. NEW ROUTES FOR THE SPECTRA GRADE

SPECTRA GRADE

Pitch	Intensity	Time	Intensity	Pitch
81	11	11	80	80
82	8	12	10	81
83	8	13	10	82
84	4	14	8	83
85	8	15	9	84
86	8	16	10	85
87	8	17	11	86
88	8	18	12	87
89	8	19	13	88
90	8	20	14	89
91	8	21	15	90
92	8	22	16	91
93	8	23	17	92
94	8	24	18	93
95	8	25	19	94
96	8	26	20	95
97	8	27	21	96
98	8	28	22	97
99	8	29	23	98
100	8	30	24	99
101	8	31	25	100
102	8	32	26	101
103	8	33	27	102
104	8	34	28	103
105	8	35	29	104
106	8	36	30	105
107	8	37	31	106
108	8	38	32	107
109	8	39	33	108
110	8	40	34	109
111	8	41	35	110
112	8	42	36	111
113	8	43	37	112
114	8	44	38	113
115	8	45	39	114
116	8	46	40	115
117	8	47	41	116
118	8	48	42	117
119	8	49	43	118
120	8	50	44	119
121	8	51	45	120
122	8	52	46	121
123	8	53	47	122
124	8	54	48	123
125	8	55	49	124
126	8	56	50	125
127	8	57	51	126
128	8	58	52	127
129	8	59	53	128
130	8	60	54	129
131	8	61	55	130
132	8	62	56	131
133	8	63	57	132
134	8	64	58	133
135	8	65	59	134
136	8	66	60	135
137	8	67	61	136
138	8	68	62	137
139	8	69	63	138
140	8	70	64	139
141	8	71	65	140
142	8	72	66	141
143	8	73	67	142
144	8	74	68	143
145	8	75	69	144
146	8	76	70	145
147	8	77	71	146
148	8	78	72	147
149	8	79	73	148
150	8	80	74	149
151	8	81	75	150
152	8	82	76	151
153	8	83	77	152
154	8	84	78	153
155	8	85	79	154
156	8	86	80	155
157	8	87	81	156
158	8	88	82	157
159	8	89	83	158
160	8	90	84	159
161	8	91	85	160
162	8	92	86	161
163	8	93	87	162
164	8	94	88	163
165	8	95	89	164
166	8	96	90	165
167	8	97	91	166
168	8	98	92	167
169	8	99	93	168
170	8	100	94	169
171	8	101	95	170
172	8	102	96	171
173	8	103	97	172
174	8	104	98	173
175	8	105	99	174
176	8	106	100	175
177	8	107	101	176
178	8	108	102	177
179	8	109	103	178
180	8	110	104	179
181	8	111	105	180
182	8	112	106	181
183	8	113	107	182
184	8	114	108	183
185	8	115	109	184
186	8	116	110	185
187	8	117	111	186
188	8	118	112	187
189	8	119	113	188
190	8	120	114	189
191	8	121	115	190
192	8	122	116	191
193	8	123	117	192
194	8	124	118	193
195	8	125	119	194
196	8	126	120	195
197	8	127	121	196
198	8	128	122	197
199	8	129	123	198
200	8	130	124	199
201	8	131	125	200
202	8	132	126	201
203	8	133	127	202
204	8	134	128	203
205	8	135	129	204
206	8	136	130	205
207	8	137	131	206
208	8	138	132	207
209	8	139	133	208
210	8	140	134	209
211	8	141	135	210
212	8	142	136	211
213	8	143	137	212
214	8	144	138	213
215	8	145	139	214
216	8	146	140	215
217	8	147	141	216
218	8	148	142	217
219	8	149	143	218
220	8	150	144	219
221	8	151	145	220
222	8	152	146	221
223	8	153	147	222
224	8	154	148	223
225	8	155	149	224
226	8	156	150	225
227	8	157	151	226
228	8	158	152	227
229	8	159	153	228
230	8	160	154	229
231	8	161	155	230
232	8	162	156	231
233	8	163	157	232
234	8	164	158	233
235	8	165	159	234
236	8	166	160	235
237	8	167	161	236
238	8	168	162	237
239	8	169	163	238
240	8	170	164	239
241	8	171	165	240
242	8	172	166	241
243	8	173	167	242
244	8	174	168	243
245	8	175	169	244
246	8	176	170	245
247	8	177	171	246
248	8	178	172	247
249	8	179	173	248
250	8	180	174	249
251	8	181	175	250
252	8	182	176	251
253	8	183	177	252
254	8	184	178	253
255	8	185	179	254
256	8	186	180	255
257	8	187	181	256
258	8	188	182	257
259	8	189	183	258
260	8	190	184	259
261	8	191	185	260
262	8	192	186	261
263	8	193	187	262
264	8	194	188	263
265	8	195	189	264
266	8	196	190	265
267	8	197	191	266
268	8	198	192	267
269	8	199	193	268
270	8	200	194	269
271	8	201	195	270
272	8	202	196	271
273	8	203	197	272
274	8	204	198	273
275	8	205	199	274
276	8	206	200	275
277	8	207	201	276
278	8	208	202	277
279	8	209	203	278
280	8	210	204	279
281	8	211	205	280
282	8	212	206	281
283	8	213	207	282
284	8	214	208	283
285	8	215	209	284
286	8	216	210	285
287	8	217	211	286
288	8	218	212	287
289	8	219	213	288
290	8	220	214	289
291	8	221	215	290
292	8	222	216	291
293	8	223	217	292
294	8	224	218	293
295	8	225	219	294
296	8	226	220	295
297	8	227	221	296
298	8	228	222	297
299	8	229	223	298
300	8	230	224	299
301	8	231	225	300
302	8	232	226	301
303	8	233	227	302
304	8	234	228	303
305	8	235	229	304
306	8	236	230	305
307	8	237	231	306
308	8	238	232	307
309	8	239	233	308
310	8	240	234	309
311	8	241	235	310
312	8	242	236	311
313	8	243	237	312
314	8	244	238	313
315	8	245	239	314
316	8	246	240	315
317	8	247	241	316
318	8	248	242	317
319	8	249	243	318
320	8	250	244	319
321	8	251	245	320
322	8	252	246	321
323	8	253	247	322
324	8	254	248	323
325	8	255	249	324
326	8	256	250	325
327	8	257	251	326
328	8	258	252	327
329	8	259	253	328
330	8	260	254	329
331	8	261	255	330
332	8	262	256	331
333	8	263	257	332
334	8	264	258	333
335	8	265	259	334
336	8	266	260	335
337	8	267	261	336
338	8	268	262	337
339	8	269	263	338
340	8	270	264	339
341	8	271	265	340
342	8	272	266	341
343	8	273	267	342
344	8	274	268	343
345	8	275	269	344
346	8	276	270	345
347	8	277	271	346
348	8	278	272	347
349	8	279	273	348
350	8	280	274	349
351	8	281	275	350
352	8	282	276	351
353	8	283	277	352
354	8	284	278	353
355	8	285	279	354
356	8	286	280	355
357	8	287	281	356
358	8	288	282	357
359	8	289	283	358
360	8	290	284	359
361	8	291	285	360
362	8	292	286	361
363	8	293		



TABLE II. (CONTINUED)

Pitch	Intensity	Time	Tonal-memory	Rhythm
62	41	74	09	35
55	47	49	15	26
64	71	73	21	33
49	37	39	18	28
49	54	43	15	25
60	73	75	27	33



TABLE II. (Continued)

Position	Geometry	Time	Ionization	Energy
60	11	41	32	22
70	11	19	15	20
81	71	75	21	22
10	31	30	16	28
10	41	40	14	29
20	32	38	27	25



TABLE III. RAW SCORES FOR THE SEVENTH GRADE

## PUEBLO BOYS

Pitch	Intensity	Time	Tonal-memory	Rhythm
50	53	59	13	18
42	70	79	22	39
58	48	62	17	36
42	41	49	12	26
57	74	64	14	30
48	32	64	14	36
35	43	38	10	26
54	80	66	19	38
47	52	59	27	33
52	60	70	12	34
66	55	60	17	27
63	50	55	10	26
55	56	49	26	32
65	48	50	13	27
68	50	47	18	31
66	60	45	22	38
57	46	50	12	29
44	40	50	14	28



TABLE III. THE COGNITIVE PERFORMANCE OF THE

PARENTS

Place	Intelligence	Time	Memory	Mean
10	10	10	10	10
11	11	11	11	11
12	12	12	12	12
13	13	13	13	13
14	14	14	14	14
15	15	15	15	15
16	16	16	16	16
17	17	17	17	17
18	18	18	18	18
19	19	19	19	19
20	20	20	20	20
21	21	21	21	21
22	22	22	22	22
23	23	23	23	23
24	24	24	24	24
25	25	25	25	25
26	26	26	26	26
27	27	27	27	27
28	28	28	28	28
29	29	29	29	29
30	30	30	30	30
31	31	31	31	31
32	32	32	32	32
33	33	33	33	33
34	34	34	34	34
35	35	35	35	35
36	36	36	36	36
37	37	37	37	37
38	38	38	38	38
39	39	39	39	39
40	40	40	40	40
41	41	41	41	41
42	42	42	42	42
43	43	43	43	43
44	44	44	44	44
45	45	45	45	45
46	46	46	46	46
47	47	47	47	47
48	48	48	48	48
49	49	49	49	49
50	50	50	50	50



TABLE LLI. (CONTINUED)

Pitch	Intensity	Time	Tonal-Memory	Rhythm
51	71	72	23	26
55	47	55	12	18
71	53	63	15	38
55	65	65	20	24
71	69	65	25	31
56	48	50	18	17
66	50	64	22	40
62	48	50	11	39
58	36	48	15	25
50	50	60	15	32
43	40	45	13	33
56	40	48	15	32
45	30	44	21	35
50	67	41	25	35
52	60	70	12	34
42	52	59	27	33
42	70	69	22	39
45	74	60	16	27
47	59	76	27	32
37	62	51	16	28



1922

Year	Month	Day	Time	Location
1922	Jan	1	10:00	St. Paul
1922	Jan	2	11:00	St. Paul
1922	Jan	3	12:00	St. Paul
1922	Jan	4	13:00	St. Paul
1922	Jan	5	14:00	St. Paul
1922	Jan	6	15:00	St. Paul
1922	Jan	7	16:00	St. Paul
1922	Jan	8	17:00	St. Paul
1922	Jan	9	18:00	St. Paul
1922	Jan	10	19:00	St. Paul
1922	Jan	11	20:00	St. Paul
1922	Jan	12	21:00	St. Paul
1922	Jan	13	22:00	St. Paul
1922	Jan	14	23:00	St. Paul
1922	Jan	15	24:00	St. Paul
1922	Jan	16	25:00	St. Paul
1922	Jan	17	26:00	St. Paul
1922	Jan	18	27:00	St. Paul
1922	Jan	19	28:00	St. Paul
1922	Jan	20	29:00	St. Paul
1922	Jan	21	30:00	St. Paul
1922	Jan	22	31:00	St. Paul
1922	Jan	23	32:00	St. Paul
1922	Jan	24	33:00	St. Paul
1922	Jan	25	34:00	St. Paul
1922	Jan	26	35:00	St. Paul
1922	Jan	27	36:00	St. Paul
1922	Jan	28	37:00	St. Paul
1922	Jan	29	38:00	St. Paul
1922	Jan	30	39:00	St. Paul
1922	Jan	31	40:00	St. Paul

THE END



TABLE III. (CONTINUED)

Pitch	Intensity	Time	Tonal-memory	Rhythm
66	60	42	06	36
41	61	68	12	33
57	63	44	21	36
55	79	39	17	25
51	41	51	12	29
56	49	52	19	29
51	44	55	13	29
48	50	58	11	24
59	57	63	24	33
45	58	72	19	36
55	65	68	16	27
38	46	55	19	32
40	55	45	11	23
59	51	52	12	35



Year	Month	Day	Time	Location	Notes
1900	Jan	1	10:00	100	100
1900	Jan	2	10:00	100	100
1900	Jan	3	10:00	100	100
1900	Jan	4	10:00	100	100
1900	Jan	5	10:00	100	100
1900	Jan	6	10:00	100	100
1900	Jan	7	10:00	100	100
1900	Jan	8	10:00	100	100
1900	Jan	9	10:00	100	100
1900	Jan	10	10:00	100	100
1900	Jan	11	10:00	100	100
1900	Jan	12	10:00	100	100
1900	Jan	13	10:00	100	100
1900	Jan	14	10:00	100	100
1900	Jan	15	10:00	100	100
1900	Jan	16	10:00	100	100
1900	Jan	17	10:00	100	100
1900	Jan	18	10:00	100	100
1900	Jan	19	10:00	100	100
1900	Jan	20	10:00	100	100
1900	Jan	21	10:00	100	100
1900	Jan	22	10:00	100	100
1900	Jan	23	10:00	100	100
1900	Jan	24	10:00	100	100
1900	Jan	25	10:00	100	100
1900	Jan	26	10:00	100	100
1900	Jan	27	10:00	100	100
1900	Jan	28	10:00	100	100
1900	Jan	29	10:00	100	100
1900	Jan	30	10:00	100	100
1900	Jan	31	10:00	100	100



TABLE IV. RAW SCORES FOR THE SEVENTH GRADE  
PUEBLO GIRLS

Pitch	Intensity	Time	Tonal-memory	Rhythm
35	52	38	21	25
59	56	57	18	36
63	43	54	13	34
46	68	66	22	44
46	51	50	12	26
50	13	70	12	38
42	59	73	12	32
51	44	32	36	25
54	37	75	16	26
51	47	63	13	16
51	45	42	15	26
47	64	49	19	27
49	49	46	14	31
46	52	57	17	30
47	51	59	05	29
63	84	63	24	31
78	74	72	13	26
47	42	52	11	32



# COMBINATION

DATE	DESCRIPTION	AMOUNT	BALANCE
1900			
1			
2			
3			
4			
5			
6			
7			
8			
9			
10			
11			
12			
13			
14			
15			
16			
17			
18			
19			
20			
21			
22			
23			
24			
25			
26			
27			
28			
29			
30			
31			
32			
33			
34			
35			
36			
37			
38			
39			
40			
41			
42			
43			
44			
45			
46			
47			
48			
49			
50			
51			
52			
53			
54			
55			
56			
57			
58			
59			
60			
61			
62			
63			
64			
65			
66			
67			
68			
69			
70			
71			
72			
73			
74			
75			
76			
77			
78			
79			
80			
81			
82			
83			
84			
85			
86			
87			
88			
89			
90			
91			
92			
93			
94			
95			
96			
97			
98			
99			
100			



TABLE IV. (CONTINUED)

Pitch	Intensity	Time	Tonal-memory	Rhythm
50	38	59	10	28
49	69	67	16	33
52	61	38	06	33
56	43	49	17	24
40	88	82	21	41
50	46	59	13	36
29	44	79	30	38
47	50	72	22	40
42	54	53	17	29
49	69	47	26	30
54	71	47	15	29
53	65	58	17	32
50	78	40	14	23
42	69	56	14	32
58	59	58	29	38
45	38	39	14	34
50	47	80	23	41
35	50	62	26	38
42	66	64	17	30



# CORRECTIONAL INSTITUTIONS

1911-1912

Annual Report

Year	Male	Female	Total	White	Coloured
1911	10	1	11	10	1
1910	12	2	14	12	2
1909	15	3	18	15	3
1908	18	4	22	18	4
1907	20	5	25	20	5
1906	22	6	28	22	6
1905	25	7	32	25	7
1904	28	8	36	28	8
1903	30	9	39	30	9
1902	32	10	42	32	10
1901	35	11	46	35	11
1900	38	12	50	38	12
1899	40	13	53	40	13
1898	42	14	56	42	14
1897	45	15	60	45	15
1896	48	16	64	48	16
1895	50	17	67	50	17
1894	52	18	70	52	18
1893	55	19	74	55	19
1892	58	20	78	58	20
1891	60	21	81	60	21
1890	62	22	84	62	22
1889	65	23	88	65	23
1888	68	24	92	68	24
1887	70	25	95	70	25
1886	72	26	98	72	26
1885	75	27	102	75	27
1884	78	28	106	78	28
1883	80	29	109	80	29
1882	82	30	112	82	30
1881	85	31	116	85	31
1880	88	32	120	88	32
1879	90	33	123	90	33
1878	92	34	126	92	34
1877	95	35	130	95	35
1876	98	36	134	98	36
1875	100	37	137	100	37
1874	102	38	140	102	38
1873	105	39	144	105	39
1872	108	40	148	108	40
1871	110	41	151	110	41
1870	112	42	154	112	42
1869	115	43	158	115	43
1868	118	44	162	118	44
1867	120	45	165	120	45
1866	122	46	168	122	46
1865	125	47	172	125	47
1864	128	48	176	128	48
1863	130	49	179	130	49
1862	132	50	182	132	50
1861	135	51	186	135	51
1860	138	52	190	138	52
1859	140	53	193	140	53
1858	142	54	196	142	54
1857	145	55	200	145	55
1856	148	56	204	148	56
1855	150	57	207	150	57
1854	152	58	210	152	58
1853	155	59	214	155	59
1852	158	60	218	158	60
1851	160	61	221	160	61
1850	162	62	224	162	62
1849	165	63	228	165	63
1848	168	64	232	168	64
1847	170	65	235	170	65
1846	172	66	238	172	66
1845	175	67	242	175	67
1844	178	68	246	178	68
1843	180	69	249	180	69
1842	182	70	252	182	70
1841	185	71	256	185	71
1840	188	72	260	188	72
1839	190	73	263	190	73
1838	192	74	266	192	74
1837	195	75	270	195	75
1836	198	76	274	198	76
1835	200	77	277	200	77
1834	202	78	280	202	78
1833	205	79	284	205	79
1832	208	80	288	208	80
1831	210	81	291	210	81
1830	212	82	294	212	82
1829	215	83	298	215	83
1828	218	84	302	218	84
1827	220	85	305	220	85
1826	222	86	308	222	86
1825	225	87	312	225	87
1824	228	88	316	228	88
1823	230	89	319	230	89
1822	232	90	322	232	90
1821	235	91	326	235	91
1820	238	92	330	238	92
1819	240	93	333	240	93
1818	242	94	336	242	94
1817	245	95	340	245	95
1816	248	96	344	248	96
1815	250	97	347	250	97
1814	252	98	350	252	98
1813	255	99	354	255	99
1812	258	100	358	258	100
1811	260	101	361	260	101
1810	262	102	364	262	102
1809	265	103	368	265	103
1808	268	104	372	268	104
1807	270	105	375	270	105
1806	272	106	378	272	106
1805	275	107	382	275	107
1804	278	108	386	278	108
1803	280	109	389	280	109
1802	282	110	392	282	110
1801	285	111	396	285	111
1800	288	112	400	288	112
1799	290	113	403	290	113
1798	292	114	406	292	114
1797	295	115	410	295	115
1796	298	116	414	298	116
1795	300	117	417	300	117
1794	302	118	420	302	118
1793	305	119	424	305	119
1792	308	120	428	308	120
1791	310	121	431	310	121
1790	312	122	434	312	122
1789	315	123	438	315	123
1788	318	124	442	318	124
1787	320	125	445	320	125
1786	322	126	448	322	126
1785	325	127	452	325	127
1784	328	128	456	328	128
1783	330	129	459	330	129
1782	332	130	462	332	130
1781	335	131	466	335	131
1780	338	132	470	338	132
1779	340	133	473	340	133
1778	342	134	476	342	134
1777	345	135	480	345	135
1776	348	136	484	348	136
1775	350	137	487	350	137
1774	352	138	490	352	138
1773	355	139	494	355	139
1772	358	140	498	358	140
1771	360	141	501	360	141
1770	362	142	504	362	142
1769	365	143	508	365	143
1768	368	144	512	368	144
1767	370	145	515	370	145
1766	372	146	518	372	146
1765	375	147	522	375	147
1764	378	148	526	378	148
1763	380	149	529	380	149
1762	382	150	532	382	150
1761	385	151	536	385	151
1760	388	152	540	388	152
1759	390	153	543	390	153
1758	392	154	546	392	154
1757	395	155	550	395	155
1756	398	156	554	398	156
1755	400	157	557	400	157
1754	402	158	560	402	158
1753	405	159	564	405	159
1752	408	160	568	408	160
1751	410	161	571	410	161
1750	412	162	574	412	162
1749	415	163	578	415	163
1748	418	164	582	418	164
1747	420	165	585	420	165
1746	422	166	588	422	166
1745	425	167	592	425	167
1744	428	168	596	428	168
1743	430	169	599	430	169
1742	432	170	602	432	170
1741	435	171	606	435	171
1740	438	172	610	438	172
1739	440	173	613	440	173
1738	442	174	616	442	174
1737	445	175	620	445	175
1736	448	176	624	448	176
1735	450	177	627	450	177
1734	452	178	630	452	178
1733	455	179	634	455	179
1732	458	180	638	458	180
1731	460	181	641	460	181
1730	462	182	644	462	182
1729	465	183	648	465	183
1728	468	184	652	468	184
1727	470	185	655	470	185
1726	472	186	658	472	186
1725	475	187	662	475	187
1724	478	188	666	478	188
1723	480	189	669	480	189
1722	482	190	672	482	190
1721	485	191	676	485	191
1720	488	192	680	488	192
1719	490	193	683	490	193
1718	492	194	686	492	194
1717	495	195	690	495	195
1716	498	196	694	498	196
1715	500	197	697	500	197
1714	502	198	700	502	198
1713	505	199	704	505	199
1712	508	200	708	508	200
1711	510	201	711	510	201
1710	512	202	714	512	202
1709	515	203	718	515	203
1708	518	204	722	518	204
1707	520	205	725	520	205
1706	522	206	728	522	206
1705	525	207	732	525	207
1704	528	208	736	528	208
1703	530	209	739	530	209
1702	532	210	742	532	210
1701	535	211	746	535	211
1700	538	212	750	538	212
1699	540	213	753	540	213
1698	542	214	756	542	214
1697	545	215	760	545	215
1696	548	216	764	548	216
1695	550	217	767	550	217
1694	552	218	770	552	218
1693	555	219	774	555	219
1692	558	220	778	558	220
1691	560	221	781	560	221
1690	562	222	784	562	222
1689	565	223	788	565	223
1688	568	224	792	568	224
1687	570	225	795	570	225
1686	572	226	798	572	226
1685	575	227	802	575	227
1684	578	228	806	578	228
1683	580	229	809	580	229
1682	582	230	812	582	230
1681	585	231	816	585	231
1680	588	232	820	588	232
1679	590	233	823	590	233
1678	592	234	826	592	234
1677	595	235	830	595	235
1676	598				



TABLE IV. (CONTINUED)

Pitch	Intensity	Time	Tonal-memory	Rhythm
46	72	71	21	35
49	49	46	14	31
47	68	49	19	27
46	51	48	12	20
52	73	45	20	29
58	78	52	18	29
40	75	65	18	34
43	86	73	12	36
31	86	63	09	41
38	53	64	21	32
32	63	43	33	32
58	41	42	20	28
51	50	49	09	22
51	47	57	13	29
44	53	49	18	25



# THE JOURNAL OF THE

1890

THE JOURNAL OF THE

1	2	3	4	5	6
7	8	9	10	11	12
13	14	15	16	17	18
19	20	21	22	23	24
25	26	27	28	29	30
31	32	33	34	35	36
37	38	39	40	41	42
43	44	45	46	47	48
49	50	51	52	53	54
55	56	57	58	59	60
61	62	63	64	65	66
67	68	69	70	71	72
73	74	75	76	77	78
79	80	81	82	83	84
85	86	87	88	89	90
91	92	93	94	95	96
97	98	99	100	101	102
103	104	105	106	107	108
109	110	111	112	113	114
115	116	117	118	119	120
121	122	123	124	125	126
127	128	129	130	131	132
133	134	135	136	137	138
139	140	141	142	143	144
145	146	147	148	149	150
151	152	153	154	155	156
157	158	159	160	161	162
163	164	165	166	167	168
169	170	171	172	173	174
175	176	177	178	179	180
181	182	183	184	185	186
187	188	189	190	191	192
193	194	195	196	197	198
199	200	201	202	203	204
205	206	207	208	209	210
211	212	213	214	215	216
217	218	219	220	221	222
223	224	225	226	227	228
229	230	231	232	233	234
235	236	237	238	239	240
241	242	243	244	245	246
247	248	249	250	251	252
253	254	255	256	257	258
259	260	261	262	263	264
265	266	267	268	269	270
271	272	273	274	275	276
277	278	279	280	281	282
283	284	285	286	287	288
289	290	291	292	293	294
295	296	297	298	299	300
301	302	303	304	305	306
307	308	309	310	311	312
313	314	315	316	317	318
319	320	321	322	323	324
325	326	327	328	329	330
331	332	333	334	335	336
337	338	339	340	341	342
343	344	345	346	347	348
349	350	351	352	353	354
355	356	357	358	359	360
361	362	363	364	365	366
367	368	369	370	371	372
373	374	375	376	377	378
379	380	381	382	383	384
385	386	387	388	389	390
391	392	393	394	395	396
397	398	399	400	401	402
403	404	405	406	407	408
409	410	411	412	413	414
415	416	417	418	419	420
421	422	423	424	425	426
427	428	429	430	431	432
433	434	435	436	437	438
439	440	441	442	443	444
445	446	447	448	449	450
451	452	453	454	455	456
457	458	459	460	461	462
463	464	465	466	467	468
469	470	471	472	473	474
475	476	477	478	479	480
481	482	483	484	485	486
487	488	489	490	491	492
493	494	495	496	497	498
499	500	501	502	503	504
505	506	507	508	509	510
511	512	513	514	515	516
517	518	519	520	521	522
523	524	525	526	527	528
529	530	531	532	533	534
535	536	537	538	539	540
541	542	543	544	545	546
547	548	549	550	551	552
553	554	555	556	557	558
559	560	561	562	563	564
565	566	567	568	569	570
571	572	573	574	575	576
577	578	579	580	581	582
583	584	585	586	587	588
589	590	591	592	593	594
595	596	597	598	599	600
601	602	603	604	605	606
607	608	609	610	611	612
613	614	615	616	617	618
619	620	621	622	623	624
625	626	627	628	629	630
631	632	633	634	635	636
637	638	639	640	641	642
643	644	645	646	647	648
649	650	651	652	653	654
655	656	657	658	659	660
661	662	663	664	665	666
667	668	669	670	671	672
673	674	675	676	677	678
679	680	681	682	683	684
685	686	687	688	689	690
691	692	693	694	695	696
697	698	699	700	701	702
703	704	705	706	707	708
709	710	711	712	713	714
715	716	717	718	719	720
721	722	723	724	725	726
727	728	729	730	731	732
733	734	735	736	737	738
739	740	741	742	743	744
745	746	747	748	749	750
751	752	753	754	755	756
757	758	759	760	761	762
763	764	765	766	767	768
769	770	771	772	773	774
775	776	777	778	779	780
781	782	783	784	785	786
787	788	789	790	791	792
793	794	795	796	797	798
799	800	801	802	803	804
805	806	807	808	809	810
811	812	813	814	815	816
817	818	819	820	821	822
823	824	825	826	827	828
829	830	831	832	833	834
835	836	837	838	839	840
841	842	843	844	845	846
847	848	849	850	851	852
853	854	855	856	857	858
859	860	861	862	863	864
865	866	867	868	869	870
871	872	873	874	875	876
877	878	879	880	881	882
883	884	885	886	887	888
889	890	891	892	893	894
895	896	897	898	899	900
901	902	903	904	905	906
907	908	909	910	911	912
913	914	915	916	917	918
919	920	921	922	923	924
925	926	927	928	929	930
931	932	933	934	935	936
937	938	939	940	941	942
943	944	945	946	947	948
949	950	951	952	953	954
955	956	957	958	959	960
961	962	963	964	965	966
967	968	969	970	971	972
973	974	975	976	977	978
979	980	981	982	983	984
985	986	987	988	989	990
991	992	993	994	995	996
997	998	999	1000	1001	1002



TABLE V. RAW SCORES FOR THE EIGHTH GRADE

## NAVAJO BOYS

Pitch	Intensity	Time	Tonal-memory	Rhythm
64	54	52	20	37
58	54	57	08	34
43	75	69	19	38
32	43	56	13	33
59	52	67	14	30
45	41	61	17	35
45	47	80	22	35
42	41	60	10	31
30	77	69	16	35
33	59	68	13	27
75	70	72	20	29
71	83	66	26	32
43	47	67	22	33
87	57	76	19	29
60	47	55	18	25
62	63	75	12	38
77	57	68	32	26
69	57	66	19	30
50	44	66	14	27
67	63	58	11	37



# TABLE 1. SUMMARY OF THE DATA

1960-1961

Station	Temperature	Time	Depth-Pressure	Height
1	10	10	10	10
2	10	10	10	10
3	10	10	10	10
4	10	10	10	10
5	10	10	10	10
6	10	10	10	10
7	10	10	10	10
8	10	10	10	10
9	10	10	10	10
10	10	10	10	10
11	10	10	10	10
12	10	10	10	10
13	10	10	10	10
14	10	10	10	10
15	10	10	10	10
16	10	10	10	10
17	10	10	10	10
18	10	10	10	10
19	10	10	10	10
20	10	10	10	10
21	10	10	10	10
22	10	10	10	10
23	10	10	10	10
24	10	10	10	10
25	10	10	10	10
26	10	10	10	10
27	10	10	10	10
28	10	10	10	10
29	10	10	10	10
30	10	10	10	10
31	10	10	10	10
32	10	10	10	10
33	10	10	10	10
34	10	10	10	10
35	10	10	10	10
36	10	10	10	10
37	10	10	10	10
38	10	10	10	10
39	10	10	10	10
40	10	10	10	10
41	10	10	10	10
42	10	10	10	10
43	10	10	10	10
44	10	10	10	10
45	10	10	10	10
46	10	10	10	10
47	10	10	10	10
48	10	10	10	10
49	10	10	10	10
50	10	10	10	10



TABLE V. (CONTINUED)

Pitch	Intensity	Time	Tonal-memory	Rhythm
45	38	84	15	32
48	51	78	26	41
42	44	64	13	33
68	52	70	24	30
48	67	69	22	39
42	46	52	14	21
64	77	63	14	22
47	62	46	08	20
60	30	64	18	28
55	59	40	18	22
57	75	70	12	30
62	51	68	21	31
72	61	62	17	30
30	56	76	31	24
48	75	77	28	38
71	69	71	18	38
61	80	71	18	33
45	42	54	10	22
69	63	83	22	30
61	43	68	22	39
57	61	57	12	28



# STATE OF NEW YORK IN SENATE January 1, 1901

REPORT	COMMISSIONER	STATE	DEPARTMENT	OFFICE
1	1	1	1	1
2	2	2	2	2
3	3	3	3	3
4	4	4	4	4
5	5	5	5	5
6	6	6	6	6
7	7	7	7	7
8	8	8	8	8
9	9	9	9	9
10	10	10	10	10
11	11	11	11	11
12	12	12	12	12
13	13	13	13	13
14	14	14	14	14
15	15	15	15	15
16	16	16	16	16
17	17	17	17	17
18	18	18	18	18
19	19	19	19	19
20	20	20	20	20
21	21	21	21	21
22	22	22	22	22
23	23	23	23	23
24	24	24	24	24
25	25	25	25	25
26	26	26	26	26
27	27	27	27	27
28	28	28	28	28
29	29	29	29	29
30	30	30	30	30
31	31	31	31	31
32	32	32	32	32
33	33	33	33	33
34	34	34	34	34
35	35	35	35	35
36	36	36	36	36
37	37	37	37	37
38	38	38	38	38
39	39	39	39	39
40	40	40	40	40
41	41	41	41	41
42	42	42	42	42
43	43	43	43	43
44	44	44	44	44
45	45	45	45	45
46	46	46	46	46
47	47	47	47	47
48	48	48	48	48
49	49	49	49	49
50	50	50	50	50
51	51	51	51	51
52	52	52	52	52
53	53	53	53	53
54	54	54	54	54
55	55	55	55	55
56	56	56	56	56
57	57	57	57	57
58	58	58	58	58
59	59	59	59	59
60	60	60	60	60
61	61	61	61	61
62	62	62	62	62
63	63	63	63	63
64	64	64	64	64
65	65	65	65	65
66	66	66	66	66
67	67	67	67	67
68	68	68	68	68
69	69	69	69	69
70	70	70	70	70
71	71	71	71	71
72	72	72	72	72
73	73	73	73	73
74	74	74	74	74
75	75	75	75	75
76	76	76	76	76
77	77	77	77	77
78	78	78	78	78
79	79	79	79	79
80	80	80	80	80
81	81	81	81	81
82	82	82	82	82
83	83	83	83	83
84	84	84	84	84
85	85	85	85	85
86	86	86	86	86
87	87	87	87	87
88	88	88	88	88
89	89	89	89	89
90	90	90	90	90
91	91	91	91	91
92	92	92	92	92
93	93	93	93	93
94	94	94	94	94
95	95	95	95	95
96	96	96	96	96
97	97	97	97	97
98	98	98	98	98
99	99	99	99	99
100	100	100	100	100



TABLE VI. RAW SCORES FOR THE EIGHTH GRADE

## NAVAJO GIRLS

Pitch	Intensity	Time	Tonal-memory	Rhythm
48	38	51	21	33
47	47	68	10	27
48	58	54	15	37
51	43	62	21	37
57	62	64	18	30
41	46	53	18	36
69	77	59	20	28
39	67	73	21	28
54	47	54	17	18
52	44	61	20	33
38	39	70	15	38
54	61	64	11	14
56	20	70	11	24
58	70	65	16	32
78	77	65	14	25
30	47	58	22	34
53	45	70	31	31
51	52	52	21	26



# CORPORATE BOOK

## TABLE OF CONTENTS

Page	Chapter	Page	Chapter	Page
1	Introduction	10	Financial Statements	10
2	Company History	11	Product Line	11
3	Management	12	Marketing Strategy	12
4	Operations	13	Human Resources	13
5	Legal and Compliance	14	Environmental Policy	14
6	Investor Relations	15	Community Relations	15
7	Appendix A	16	Appendix B	16
8	Appendix C	17	Appendix D	17
9	Appendix E	18	Appendix F	18
10	Appendix G	19	Appendix H	19
11	Appendix I	20	Appendix J	20
12	Appendix K	21	Appendix L	21
13	Appendix M	22	Appendix N	22
14	Appendix O	23	Appendix P	23
15	Appendix Q	24	Appendix R	24
16	Appendix S	25	Appendix T	25
17	Appendix U	26	Appendix V	26
18	Appendix W	27	Appendix X	27
19	Appendix Y	28	Appendix Z	28
20	Appendix AA	29	Appendix AB	29
21	Appendix AC	30	Appendix AD	30
22	Appendix AE	31	Appendix AF	31
23	Appendix AG	32	Appendix AH	32
24	Appendix AI	33	Appendix AJ	33
25	Appendix AK	34	Appendix AL	34
26	Appendix AM	35	Appendix AN	35
27	Appendix AO	36	Appendix AP	36
28	Appendix AQ	37	Appendix AR	37
29	Appendix AS	38	Appendix AT	38
30	Appendix AU	39	Appendix AV	39
31	Appendix AW	40	Appendix AX	40
32	Appendix AY	41	Appendix AZ	41
33	Appendix BA	42	Appendix BB	42
34	Appendix BC	43	Appendix BD	43
35	Appendix BE	44	Appendix BF	44
36	Appendix BG	45	Appendix BH	45
37	Appendix BI	46	Appendix BJ	46
38	Appendix BK	47	Appendix BL	47
39	Appendix BM	48	Appendix BN	48
40	Appendix BO	49	Appendix BP	49
41	Appendix BQ	50	Appendix BR	50
42	Appendix BS	51	Appendix BT	51
43	Appendix BU	52	Appendix BV	52
44	Appendix BW	53	Appendix BX	53
45	Appendix BY	54	Appendix BZ	54
46	Appendix CA	55	Appendix CB	55
47	Appendix CC	56	Appendix CD	56
48	Appendix CE	57	Appendix CF	57
49	Appendix CG	58	Appendix CH	58
50	Appendix CI	59	Appendix CJ	59
51	Appendix CK	60	Appendix CL	60
52	Appendix CM	61	Appendix CN	61
53	Appendix CO	62	Appendix CP	62
54	Appendix CQ	63	Appendix CR	63
55	Appendix CS	64	Appendix CT	64
56	Appendix CU	65	Appendix CV	65
57	Appendix CW	66	Appendix CX	66
58	Appendix CY	67	Appendix CZ	67
59	Appendix DA	68	Appendix DB	68
60	Appendix DC	69	Appendix DD	69
61	Appendix DE	70	Appendix DF	70
62	Appendix DG	71	Appendix DH	71
63	Appendix DI	72	Appendix DJ	72
64	Appendix DK	73	Appendix DL	73
65	Appendix DM	74	Appendix DN	74
66	Appendix DO	75	Appendix DP	75
67	Appendix DQ	76	Appendix DR	76
68	Appendix DS	77	Appendix DT	77
69	Appendix DU	78	Appendix DV	78
70	Appendix DW	79	Appendix DX	79
71	Appendix DY	80	Appendix DZ	80
72	Appendix EA	81	Appendix EB	81
73	Appendix EC	82	Appendix ED	82
74	Appendix EE	83	Appendix EF	83
75	Appendix EG	84	Appendix EH	84
76	Appendix EI	85	Appendix EJ	85
77	Appendix EK	86	Appendix EL	86
78	Appendix EM	87	Appendix EN	87
79	Appendix EO	88	Appendix EP	88
80	Appendix EQ	89	Appendix ER	89
81	Appendix ES	90	Appendix ET	90
82	Appendix EU	91	Appendix EV	91
83	Appendix EW	92	Appendix EX	92
84	Appendix EY	93	Appendix EZ	93
85	Appendix FA	94	Appendix FB	94
86	Appendix FC	95	Appendix FD	95
87	Appendix FE	96	Appendix FF	96
88	Appendix FG	97	Appendix FH	97
89	Appendix FI	98	Appendix FJ	98
90	Appendix FK	99	Appendix FL	99
91	Appendix FM	100	Appendix FN	100
92	Appendix FO	101	Appendix FP	101
93	Appendix FQ	102	Appendix FR	102
94	Appendix FS	103	Appendix FT	103
95	Appendix FU	104	Appendix FV	104
96	Appendix FW	105	Appendix FX	105
97	Appendix FY	106	Appendix FZ	106
98	Appendix GA	107	Appendix GB	107
99	Appendix GC	108	Appendix GD	108
100	Appendix GE	109	Appendix GF	109
101	Appendix GG	110	Appendix GH	110
102	Appendix GI	111	Appendix GJ	111
103	Appendix GK	112	Appendix GL	112
104	Appendix GM	113	Appendix GN	113
105	Appendix GO	114	Appendix GP	114
106	Appendix GQ	115	Appendix GR	115
107	Appendix GS	116	Appendix GT	116
108	Appendix GU	117	Appendix GV	117
109	Appendix GW	118	Appendix GX	118
110	Appendix GY	119	Appendix GZ	119
111	Appendix HA	120	Appendix HB	120
112	Appendix HC	121	Appendix HD	121
113	Appendix HE	122	Appendix HF	122
114	Appendix HG	123	Appendix HH	123
115	Appendix HI	124	Appendix HJ	124
116	Appendix HK	125	Appendix HL	125
117	Appendix HM	126	Appendix HN	126
118	Appendix HO	127	Appendix HP	127
119	Appendix HQ	128	Appendix HR	128
120	Appendix HS	129	Appendix HT	129
121	Appendix HU	130	Appendix HV	130
122	Appendix HW	131	Appendix HX	131
123	Appendix HY	132	Appendix HZ	132
124	Appendix IA	133	Appendix IB	133
125	Appendix IC	134	Appendix ID	134
126	Appendix IE	135	Appendix IF	135
127	Appendix IG	136	Appendix IH	136
128	Appendix II	137	Appendix IJ	137
129	Appendix IK	138	Appendix IL	138
130	Appendix IM	139	Appendix IN	139
131	Appendix IO	140	Appendix IP	140
132	Appendix IQ	141	Appendix IR	141
133	Appendix IS	142	Appendix IT	142
134	Appendix IU	143	Appendix IV	143
135	Appendix IW	144	Appendix IX	144
136	Appendix IY	145	Appendix IZ	145
137	Appendix JA	146	Appendix JB	146
138	Appendix JC	147	Appendix JD	147
139	Appendix JE	148	Appendix JF	148
140	Appendix JG	149	Appendix JH	149
141	Appendix JI	150	Appendix JJ	150
142	Appendix JK	151	Appendix JL	151
143	Appendix JM	152	Appendix JN	152
144	Appendix JO	153	Appendix JP	153
145	Appendix JQ	154	Appendix JR	154
146	Appendix JS	155	Appendix JT	155
147	Appendix JU	156	Appendix JV	156
148	Appendix JW	157	Appendix JX	157
149	Appendix JY	158	Appendix JZ	158
150	Appendix KA	159	Appendix KB	159
151	Appendix KC	160	Appendix KD	160
152	Appendix KE	161	Appendix KF	161
153	Appendix KG	162	Appendix KH	162
154	Appendix KI	163	Appendix KJ	163
155	Appendix KK	164	Appendix KL	164
156	Appendix KM	165	Appendix KN	165
157	Appendix KO	166	Appendix KP	166
158	Appendix KQ	167	Appendix KR	167
159	Appendix KS	168	Appendix KT	168
160	Appendix KU	169	Appendix KV	169
161	Appendix KW	170	Appendix KX	170
162	Appendix KY	171	Appendix KZ	171
163	Appendix LA	172	Appendix LB	172
164	Appendix LC	173	Appendix LD	173
165	Appendix LE	174	Appendix LF	174
166	Appendix LG	175	Appendix LH	175
167	Appendix LI	176	Appendix LJ	176
168	Appendix LK	177	Appendix LL	177
169	Appendix LM	178	Appendix LN	178
170	Appendix LO	179	Appendix LP	179
171	Appendix LQ	180	Appendix LR	180
172	Appendix LS	181	Appendix LT	181
173	Appendix LU	182	Appendix LV	182
174	Appendix LW	183	Appendix LX	183
175	Appendix LY	184	Appendix LZ	184
176	Appendix MA	185	Appendix MB	185
177	Appendix MC	186	Appendix MD	186
178	Appendix ME	187	Appendix MF	187
179	Appendix MG	188	Appendix MH	188
180	Appendix MI	189	Appendix MJ	189
181	Appendix MK	190	Appendix ML	190
182	Appendix MM	191	Appendix MN	191
183	Appendix MO	192	Appendix MP	192
184	Appendix MQ	193	Appendix MR	193
185	Appendix MS	194	Appendix MT	194
186	Appendix MU	195	Appendix MV	195
187	Appendix MW	196	Appendix MX	196
188	Appendix MY	197	Appendix MZ	197
189	Appendix NA	198	Appendix NB	198
190	Appendix NC	199	Appendix ND	199
191	Appendix NE	200	Appendix NF	200
192	Appendix NG	201	Appendix NH	201
193	Appendix NI	202	Appendix NJ	202
194	Appendix NK	203	Appendix NL	203
195	Appendix NM	204	Appendix NN	204
196	Appendix NO	205	Appendix NP	205
197	Appendix NQ	206	Appendix NR	206
198	Appendix NS	207	Appendix NT	207
199	Appendix NU	208	Appendix NV	208
200	Appendix NW	209	Appendix NX	209
201	Appendix NY	210	Appendix NZ	210
202	Appendix OA	211	Appendix OB	211
203	Appendix OC	212	Appendix OD	212
204	Appendix OE	213	Appendix OF	213
205	Appendix OG	214	Appendix OH	214
206	Appendix OI	215	Appendix OJ	215
207	Appendix OK	216	Appendix OL	216
208	Appendix OM	217	Appendix ON	217
209	Appendix OO	218	Appendix OP	218
210	Appendix OQ	219	Appendix OR	219
211	Appendix OS	220	Appendix OT	220
212	Appendix OU	221	Appendix OV	221
213	Appendix OW	222	Appendix OX	222
214	Appendix OY	223	Appendix OZ	223
215	Appendix PA	224	Appendix PB	224
216	Appendix PC	225	Appendix PD	225
217	Appendix PE	226	Appendix PF	226
218	Appendix PG	227	Appendix PH	227
219	Appendix PI	228	Appendix PJ	228
220	Appendix PK	229	Appendix PL	229
221	Appendix PM	230	Appendix PN	230
222	Appendix PO	231	Appendix PP	231
223	Appendix PQ	232	Appendix PR	232
224	Appendix PS	233	Appendix PT	233
225	Appendix PU	234	Appendix PV	234
226	Appendix PW	235	Appendix PX	235
227	Appendix PY	236	Appendix PZ	236
228	Appendix QA	237	Appendix QB	237
229	Appendix QC	238	Appendix QD	238
230	Appendix QE	239	Appendix QF	239
231	Appendix QG	240	Appendix QH	240
232	Appendix QI	241	Appendix QJ	241
233	Appendix QK	242	Appendix QL	242
234	Appendix QM	243	Appendix QN	243
235	Appendix QO	244	Appendix QP	244
236	Appendix QQ	245	Appendix QR	245
237	Appendix QS	246	Appendix QT	246
238	Appendix QU	247	Appendix QV	247
239	Appendix QW	248	Appendix QX	248
240	Appendix QY	249		



TABLE VI. (CONTINUED)

Pitch	Intensity	Time	Tonal-memory	Rhythm
59	58	59	19	36
82	87	85	33	40
59	64	51	20	36
55	52	71	15	34
62	61	58	13	29
46	53	58	13	16
71	47	68	18	35
46	45	61	21	39
38	51	52	16	33
57	54	60	15	26
50	45	60	18	25
41	51	64	24	31
56	74	72	19	30
68	64	61	25	28
69	51	40	21	35
76	95	80	28	36
60	45	59	17	20
49	43	44	16	32
47	58	52	15	21
37	43	49	20	21
36	84	63	17	29



DATE	DESCRIPTION	AMOUNT	CHECK NO.	BANK	INITIALS
10/1	...	...	...	...	...
10/2	...	...	...	...	...
10/3	...	...	...	...	...
10/4	...	...	...	...	...
10/5	...	...	...	...	...
10/6	...	...	...	...	...
10/7	...	...	...	...	...
10/8	...	...	...	...	...
10/9	...	...	...	...	...
10/10	...	...	...	...	...
10/11	...	...	...	...	...
10/12	...	...	...	...	...
10/13	...	...	...	...	...
10/14	...	...	...	...	...
10/15	...	...	...	...	...
10/16	...	...	...	...	...
10/17	...	...	...	...	...
10/18	...	...	...	...	...
10/19	...	...	...	...	...
10/20	...	...	...	...	...
10/21	...	...	...	...	...
10/22	...	...	...	...	...
10/23	...	...	...	...	...
10/24	...	...	...	...	...
10/25	...	...	...	...	...
10/26	...	...	...	...	...
10/27	...	...	...	...	...
10/28	...	...	...	...	...
10/29	...	...	...	...	...
10/30	...	...	...	...	...
10/31	...	...	...	...	...



TABLE VII. RAW SCORES FOR THE EIGHTH GRADE

## PUEBLO BOYS

Pitch	Intensity	Time	Tonal-memory	Rhythm
48	60	65	15	32
35	85	84	09	32
40	50	81	13	45
56	55	72	17	38
41	53	69	08	31
44	55	69	19	39
64	80	71	22	41
68	78	74	18	35
55	79	56	24	41
41	67	57	15	35
52	63	77	18	42
47	42	65	11	32
54	82	82	19	34
89	73	66	31	32
34	59	52	24	23
40	45	70	19	40
56	64	31	18	36
53	61	76	18	42



# CORPORATE BOND

No. 1000

Interest				
Payable				
On the				
Date				
of				
the				
Year				
1900				
100	100	100	100	100
90	90	90	90	90
80	80	80	80	80
70	70	70	70	70
60	60	60	60	60
50	50	50	50	50
40	40	40	40	40
30	30	30	30	30
20	20	20	20	20
10	10	10	10	10
00	00	00	00	00
90	90	90	90	90
80	80	80	80	80
70	70	70	70	70
60	60	60	60	60
50	50	50	50	50
40	40	40	40	40
30	30	30	30	30
20	20	20	20	20
10	10	10	10	10
00	00	00	00	00
90	90	90	90	90
80	80	80	80	80
70	70	70	70	70
60	60	60	60	60
50	50	50	50	50
40	40	40	40	40
30	30	30	30	30
20	20	20	20	20
10	10	10	10	10
00	00	00	00	00



TABLE VII. (CONTINUED)

Pitch	Intensity	Time	Tonal-memory	Rhythm
21	48	60	20	42
44	60	70	07	38
42	60	71	21	31
69	41	78	21	40
31	47	62	26	28
50	51	52	14	26
74	49	31	25	36
64	78	68	28	28
51	48	66	11	32



6

(1912-1913)

TABLE				
Year	1912	1913	1914	1915
1	10	15	20	25
2	15	20	25	30
3	20	25	30	35
4	25	30	35	40
5	30	35	40	45
6	35	40	45	50
7	40	45	50	55
8	45	50	55	60
9	50	55	60	65
10	55	60	65	70
11	60	65	70	75
12	65	70	75	80
13	70	75	80	85
14	75	80	85	90
15	80	85	90	95
16	85	90	95	100
17	90	95	100	105
18	95	100	105	110
19	100	105	110	115
20	105	110	115	120
21	110	115	120	125
22	115	120	125	130
23	120	125	130	135
24	125	130	135	140
25	130	135	140	145
26	135	140	145	150
27	140	145	150	155
28	145	150	155	160
29	150	155	160	165
30	155	160	165	170
31	160	165	170	175
32	165	170	175	180
33	170	175	180	185
34	175	180	185	190
35	180	185	190	195
36	185	190	195	200
37	190	195	200	205
38	195	200	205	210
39	200	205	210	215
40	205	210	215	220
41	210	215	220	225
42	215	220	225	230
43	220	225	230	235
44	225	230	235	240
45	230	235	240	245
46	235	240	245	250
47	240	245	250	255
48	245	250	255	260
49	250	255	260	265
50	255	260	265	270
51	260	265	270	275
52	265	270	275	280
53	270	275	280	285
54	275	280	285	290
55	280	285	290	295
56	285	290	295	300
57	290	295	300	305
58	295	300	305	310
59	300	305	310	315
60	305	310	315	320
61	310	315	320	325
62	315	320	325	330
63	320	325	330	335
64	325	330	335	340
65	330	335	340	345
66	335	340	345	350
67	340	345	350	355
68	345	350	355	360
69	350	355	360	365
70	355	360	365	370
71	360	365	370	375
72	365	370	375	380
73	370	375	380	385
74	375	380	385	390
75	380	385	390	395
76	385	390	395	400
77	390	395	400	405
78	395	400	405	410
79	400	405	410	415
80	405	410	415	420
81	410	415	420	425
82	415	420	425	430
83	420	425	430	435
84	425	430	435	440
85	430	435	440	445
86	435	440	445	450
87	440	445	450	455
88	445	450	455	460
89	450	455	460	465
90	455	460	465	470
91	460	465	470	475
92	465	470	475	480
93	470	475	480	485
94	475	480	485	490
95	480	485	490	495
96	485	490	495	500
97	490	495	500	505
98	495	500	505	510
99	500	505	510	515
100	505	510	515	520

CONFIDENTIAL

1912-1913



TABLE VIII. RAW SCORES FOR THE EIGHTH GRADE

## PUEBLO GIRLS

Pitch	Intensity	Time	Tonal-memory	Rhythm
73	51	31	18	42
45	41	56	22	27
45	47	80	12	39
32	46	61	16	32
41	61	66	15	34
43	60	65	15	41
24	81	70	09	25
49	46	58	14	39
48	42	50	12	36
23	50	58	23	29
50	79	58	22	34
47	77	71	20	30
43	88	64	23	35
86	68	88	24	37
42	34	65	17	30
52	54	46	13	35
58	42	66	19	34
48	86	66	19	26
41	75	87	18	39



# STATE OF NEW YORK IN SENATE January 10, 1901.

REPORT OF THE	COMMISSIONERS OF THE	LAND OFFICE	IN RESPONSE TO A RESOLUTION PASSED BY THE SENATE, MAY 1, 1899.	ALBANY:	1901.
1	2	3	4	5	6
7	8	9	10	11	12
13	14	15	16	17	18
19	20	21	22	23	24
25	26	27	28	29	30
31	32	33	34	35	36
37	38	39	40	41	42
43	44	45	46	47	48
49	50	51	52	53	54
55	56	57	58	59	60
61	62	63	64	65	66
67	68	69	70	71	72
73	74	75	76	77	78
79	80	81	82	83	84
85	86	87	88	89	90
91	92	93	94	95	96
97	98	99	100	101	102
103	104	105	106	107	108
109	110	111	112	113	114
115	116	117	118	119	120
121	122	123	124	125	126
127	128	129	130	131	132
133	134	135	136	137	138
139	140	141	142	143	144
145	146	147	148	149	150
151	152	153	154	155	156
157	158	159	160	161	162
163	164	165	166	167	168
169	170	171	172	173	174
175	176	177	178	179	180
181	182	183	184	185	186
187	188	189	190	191	192
193	194	195	196	197	198
199	200	201	202	203	204
205	206	207	208	209	210
211	212	213	214	215	216
217	218	219	220	221	222
223	224	225	226	227	228
229	230	231	232	233	234
235	236	237	238	239	240
241	242	243	244	245	246
247	248	249	250	251	252
253	254	255	256	257	258
259	260	261	262	263	264
265	266	267	268	269	270
271	272	273	274	275	276
277	278	279	280	281	282
283	284	285	286	287	288
289	290	291	292	293	294
295	296	297	298	299	300

CORPORATE BOOK

STATE OF NEW YORK



TABLE VIII. (CONTINUED)

Pitch	Intensity	Time	Tonal-memory	Rhythm
52	31	58	14	35
55	72	76	21	31
47	57	49	15	22
61	57	60	26	31
38	33	62	18	37
46	44	52	17	28
55	65	41	13	37
54	51	75	21	33
38	44	49	09	27
38	47	62	09	27
58	55	43	32	26
45	72	68	23	21
34	63	81	13	32
34	66	76	20	38
54	55	54	21	39
58	48	60	14	38
70	60	45	16	25
41	66	72	10	29
51	79	47	10	18
62	46	42	15	26
27	45	64	13	32



# CONTENTS

Page	Chapter	Page	Chapter	Page
1	1	1	1	1
2	2	2	2	2
3	3	3	3	3
4	4	4	4	4
5	5	5	5	5
6	6	6	6	6
7	7	7	7	7
8	8	8	8	8
9	9	9	9	9
10	10	10	10	10
11	11	11	11	11
12	12	12	12	12
13	13	13	13	13
14	14	14	14	14
15	15	15	15	15
16	16	16	16	16
17	17	17	17	17
18	18	18	18	18
19	19	19	19	19
20	20	20	20	20
21	21	21	21	21
22	22	22	22	22
23	23	23	23	23
24	24	24	24	24
25	25	25	25	25
26	26	26	26	26
27	27	27	27	27
28	28	28	28	28
29	29	29	29	29
30	30	30	30	30
31	31	31	31	31
32	32	32	32	32
33	33	33	33	33
34	34	34	34	34
35	35	35	35	35
36	36	36	36	36
37	37	37	37	37
38	38	38	38	38
39	39	39	39	39
40	40	40	40	40
41	41	41	41	41
42	42	42	42	42
43	43	43	43	43
44	44	44	44	44
45	45	45	45	45
46	46	46	46	46
47	47	47	47	47
48	48	48	48	48
49	49	49	49	49
50	50	50	50	50
51	51	51	51	51
52	52	52	52	52
53	53	53	53	53
54	54	54	54	54
55	55	55	55	55
56	56	56	56	56
57	57	57	57	57
58	58	58	58	58
59	59	59	59	59
60	60	60	60	60
61	61	61	61	61
62	62	62	62	62
63	63	63	63	63
64	64	64	64	64
65	65	65	65	65
66	66	66	66	66
67	67	67	67	67
68	68	68	68	68
69	69	69	69	69
70	70	70	70	70
71	71	71	71	71
72	72	72	72	72
73	73	73	73	73
74	74	74	74	74
75	75	75	75	75
76	76	76	76	76
77	77	77	77	77
78	78	78	78	78
79	79	79	79	79
80	80	80	80	80
81	81	81	81	81
82	82	82	82	82
83	83	83	83	83
84	84	84	84	84
85	85	85	85	85
86	86	86	86	86
87	87	87	87	87
88	88	88	88	88
89	89	89	89	89
90	90	90	90	90
91	91	91	91	91
92	92	92	92	92
93	93	93	93	93
94	94	94	94	94
95	95	95	95	95
96	96	96	96	96
97	97	97	97	97
98	98	98	98	98
99	99	99	99	99
100	100	100	100	100



TABLE IX. RAW SCORES FOR THE NINTH GRADE

## NAVAJO BOYS

Pitch	Intensity	Time	Tonal-memory	Rhythm
42	40	82	19	33
69	47	79	30	32
36	68	80	11	38
70	79	82	24	38
53	46	72	21	32
61	71	62	18	30
59	14	67	24	30
65	57	65	18	29
50	45	68	23	35
79	92	80	30	34
48	63	66	16	28
52	75	63	16	37
69	56	74	20	36
82	82	82	21	32
70	49	69	10	23
71	53	68	19	29
58	87	48	17	32
35	51	77	23	25



Year	Month	Day	Time	Location	Remarks
1907	10	10	10	10	10
1907	10	11	11	11	11
1907	10	12	12	12	12
1907	10	13	13	13	13
1907	10	14	14	14	14
1907	10	15	15	15	15
1907	10	16	16	16	16
1907	10	17	17	17	17
1907	10	18	18	18	18
1907	10	19	19	19	19
1907	10	20	20	20	20
1907	10	21	21	21	21
1907	10	22	22	22	22
1907	10	23	23	23	23
1907	10	24	24	24	24
1907	10	25	25	25	25
1907	10	26	26	26	26
1907	10	27	27	27	27
1907	10	28	28	28	28
1907	10	29	29	29	29
1907	10	30	30	30	30
1907	10	31	31	31	31
1907	11	1	1	1	1
1907	11	2	2	2	2
1907	11	3	3	3	3
1907	11	4	4	4	4
1907	11	5	5	5	5
1907	11	6	6	6	6
1907	11	7	7	7	7
1907	11	8	8	8	8
1907	11	9	9	9	9
1907	11	10	10	10	10
1907	11	11	11	11	11
1907	11	12	12	12	12
1907	11	13	13	13	13
1907	11	14	14	14	14
1907	11	15	15	15	15
1907	11	16	16	16	16
1907	11	17	17	17	17
1907	11	18	18	18	18
1907	11	19	19	19	19
1907	11	20	20	20	20
1907	11	21	21	21	21
1907	11	22	22	22	22
1907	11	23	23	23	23
1907	11	24	24	24	24
1907	11	25	25	25	25
1907	11	26	26	26	26
1907	11	27	27	27	27
1907	11	28	28	28	28
1907	11	29	29	29	29
1907	11	30	30	30	30
1907	11	31	31	31	31



TABLE IX. (CONTINUED)

Pitch	Intensity	Time	Tonal-memory	Rhythm
53	89	82	26	28
69	96	76	12	33
40	51	52	10	25
51	86	73	29	31
75	79	72	17	34
82	87	84	26	39
74	84	70	28	35
66	86	72	17	28
38	65	51	12	33
60	63	69	18	28
46	32	65	06	32
44	21	59	12	31



TABLE IX. (CONTINUED)

Physic	Tonal-memory	Time	Intensity	Pitch
85	85	85	85	35
75	75	75	80	65
85	75	85	81	10
71	85	75	86	71
71	75	75	79	75
75	85	85	87	85
75	85	75	84	75
85	75	75	88	85
75	75	75	85	35
85	75	85	85	65
75	85	85	85	10
75	75	75	81	75



TABLE X. RAW SCORES FOR THE NINTH GRADE

## NAVAJO GIRLS

Pitch	Intensity	Time	Tonal-memory	Rhythm
40	57	69	11	28
52	44	75	35	38
56	62	78	18	26
60	58	58	12	27
50	42	56	16	16
37	77	77	20	26
70	46	53	16	26
65	58	68	37	24
67	60	70	24	31
46	75	71	15	27
51	41	64	20	24
58	61	65	15	38
48	43	57	13	35
36	40	60	11	28
72	66	50	20	33
49	48	49	06	34
40	34	50	10	25
61	50	48	16	32



TABLE 1. - *Continued*

TABLE 1. - *Continued*

Place	Latitude	Time	Longitude	Altitude
10	31	10	11	20
20	32	11	12	21
30	33	12	13	22
40	34	13	14	23
50	35	14	15	24
60	36	15	16	25
70	37	16	17	26
80	38	17	18	27
90	39	18	19	28
100	40	19	20	29
110	41	20	21	30
120	42	21	22	31
130	43	22	23	32
140	44	23	24	33
150	45	24	25	34
160	46	25	26	35
170	47	26	27	36
180	48	27	28	37
190	49	28	29	38
200	50	29	30	39
210	51	30	31	40
220	52	31	32	41
230	53	32	33	42
240	54	33	34	43
250	55	34	35	44
260	56	35	36	45
270	57	36	37	46
280	58	37	38	47
290	59	38	39	48
300	60	39	40	49
310	61	40	41	50
320	62	41	42	51
330	63	42	43	52
340	64	43	44	53
350	65	44	45	54
360	66	45	46	55
370	67	46	47	56
380	68	47	48	57
390	69	48	49	58
400	70	49	50	59
410	71	50	51	60
420	72	51	52	61
430	73	52	53	62
440	74	53	54	63
450	75	54	55	64
460	76	55	56	65
470	77	56	57	66
480	78	57	58	67
490	79	58	59	68
500	80	59	60	69
510	81	60	61	70
520	82	61	62	71
530	83	62	63	72
540	84	63	64	73
550	85	64	65	74
560	86	65	66	75
570	87	66	67	76
580	88	67	68	77
590	89	68	69	78
600	90	69	70	79
610	91	70	71	80
620	92	71	72	81
630	93	72	73	82
640	94	73	74	83
650	95	74	75	84
660	96	75	76	85
670	97	76	77	86
680	98	77	78	87
690	99	78	79	88
700	100	79	80	89
710	101	80	81	90
720	102	81	82	91
730	103	82	83	92
740	104	83	84	93
750	105	84	85	94
760	106	85	86	95
770	107	86	87	96
780	108	87	88	97
790	109	88	89	98
800	110	89	90	99
810	111	90	91	100
820	112	91	92	101
830	113	92	93	102
840	114	93	94	103
850	115	94	95	104
860	116	95	96	105
870	117	96	97	106
880	118	97	98	107
890	119	98	99	108
900	120	99	100	109
910	121	100	101	110
920	122	101	102	111
930	123	102	103	112
940	124	103	104	113
950	125	104	105	114
960	126	105	106	115
970	127	106	107	116
980	128	107	108	117
990	129	108	109	118
1000	130	109	110	119



TABLE X. (CONTINUED)

Pitch	Intensity	Time	Tonal-memory	Rhythm
53	53	67	12	20
61	59	46	12	24
41	78	73	10	34
64	61	63	13	28
45	50	48	12	34
68	57	60	09	32
57	86	76	20	22
50	65	40	22	40
87	47	47	20	24
58	65	53	35	40
84	89	64	35	33
70	72	71	37	30
50	70	49	16	14



Year	1950	1951	1952	1953	1954	1955
1	10	11	12	13	14	15
2	16	17	18	19	20	21
3	22	23	24	25	26	27
4	28	29	30	31	32	33
5	34	35	36	37	38	39
6	40	41	42	43	44	45
7	46	47	48	49	50	51
8	52	53	54	55	56	57
9	58	59	60	61	62	63
10	64	65	66	67	68	69
11	70	71	72	73	74	75
12	76	77	78	79	80	81
13	82	83	84	85	86	87
14	88	89	90	91	92	93
15	94	95	96	97	98	99
16	100	101	102	103	104	105
17	106	107	108	109	110	111
18	112	113	114	115	116	117
19	118	119	120	121	122	123
20	124	125	126	127	128	129
21	130	131	132	133	134	135
22	136	137	138	139	140	141
23	142	143	144	145	146	147
24	148	149	150	151	152	153
25	154	155	156	157	158	159
26	160	161	162	163	164	165
27	166	167	168	169	170	171
28	172	173	174	175	176	177
29	178	179	180	181	182	183
30	184	185	186	187	188	189
31	190	191	192	193	194	195
32	196	197	198	199	200	201
33	202	203	204	205	206	207
34	208	209	210	211	212	213
35	214	215	216	217	218	219
36	220	221	222	223	224	225
37	226	227	228	229	230	231
38	232	233	234	235	236	237
39	238	239	240	241	242	243
40	244	245	246	247	248	249
41	250	251	252	253	254	255
42	256	257	258	259	260	261
43	262	263	264	265	266	267
44	268	269	270	271	272	273
45	274	275	276	277	278	279
46	280	281	282	283	284	285
47	286	287	288	289	290	291
48	292	293	294	295	296	297
49	298	299	300	301	302	303
50	304	305	306	307	308	309
51	310	311	312	313	314	315
52	316	317	318	319	320	321
53	322	323	324	325	326	327
54	328	329	330	331	332	333
55	334	335	336	337	338	339
56	340	341	342	343	344	345
57	346	347	348	349	350	351
58	352	353	354	355	356	357
59	358	359	360	361	362	363
60	364	365	366	367	368	369
61	370	371	372	373	374	375
62	376	377	378	379	380	381
63	382	383	384	385	386	387
64	388	389	390	391	392	393
65	394	395	396	397	398	399
66	400	401	402	403	404	405
67	406	407	408	409	410	411
68	412	413	414	415	416	417
69	418	419	420	421	422	423
70	424	425	426	427	428	429
71	430	431	432	433	434	435
72	436	437	438	439	440	441
73	442	443	444	445	446	447
74	448	449	450	451	452	453
75	454	455	456	457	458	459
76	460	461	462	463	464	465
77	466	467	468	469	470	471
78	472	473	474	475	476	477
79	478	479	480	481	482	483
80	484	485	486	487	488	489
81	490	491	492	493	494	495
82	496	497	498	499	500	501
83	502	503	504	505	506	507
84	508	509	510	511	512	513
85	514	515	516	517	518	519
86	520	521	522	523	524	525
87	526	527	528	529	530	531
88	532	533	534	535	536	537
89	538	539	540	541	542	543
90	544	545	546	547	548	549
91	550	551	552	553	554	555
92	556	557	558	559	560	561
93	562	563	564	565	566	567
94	568	569	570	571	572	573
95	574	575	576	577	578	579
96	580	581	582	583	584	585
97	586	587	588	589	590	591
98	592	593	594	595	596	597
99	598	599	600	601	602	603
100	604	605	606	607	608	609
101	610	611	612	613	614	615
102	616	617	618	619	620	621
103	622	623	624	625	626	627
104	628	629	630	631	632	633
105	634	635	636	637	638	639
106	640	641	642	643	644	645
107	646	647	648	649	650	651
108	652	653	654	655	656	657
109	658	659	660	661	662	663
110	664	665	666	667	668	669
111	670	671	672	673	674	675
112	676	677	678	679	680	681
113	682	683	684	685	686	687
114	688	689	690	691	692	693
115	694	695	696	697	698	699
116	700	701	702	703	704	705
117	706	707	708	709	710	711
118	712	713	714	715	716	717
119	718	719	720	721	722	723
120	724	725	726	727	728	729
121	730	731	732	733	734	735
122	736	737	738	739	740	741
123	742	743	744	745	746	747
124	748	749	750	751	752	753
125	754	755	756	757	758	759
126	760	761	762	763	764	765
127	766	767	768	769	770	771
128	772	773	774	775	776	777
129	778	779	780	781	782	783
130	784	785	786	787	788	789
131	790	791	792	793	794	795
132	796	797	798	799	800	801
133	802	803	804	805	806	807
134	808	809	810	811	812	813
135	814	815	816	817	818	819
136	820	821	822	823	824	825
137	826	827	828	829	830	831
138	832	833	834	835	836	837
139	838	839	840	841	842	843
140	844	845	846	847	848	849
141	850	851	852	853	854	855
142	856	857	858	859	860	861
143	862	863	864	865	866	867
144	868	869	870	871	872	873
145	874	875	876	877	878	879
146	880	881	882	883	884	885
147	886	887	888	889	890	891
148	892	893	894	895	896	897
149	898	899	900	901	902	903
150	904	905	906	907	908	909
151	910	911	912	913	914	915
152	916	917	918	919	920	921
153	922	923	924	925	926	927
154	928	929	930	931	932	933
155	934	935	936	937	938	939
156	940	941	942	943	944	945
157	946	947	948	949	950	951
158	952	953	954	955	956	957
159	958	959	960	961	962	963
160	964	965	966	967	968	969
161	970	971	972	973	974	975
162	976	977	978	979	980	981
163	982	983	984	985	986	987
164	988	989	990	991	992	993
165	994	995	996	997	998	999
166	1000	1001	1002	1003	1004	1005
167	1006	1007	1008	1009	1010	1011
168	1012	1013	1014	1015	1016	1017
169	1018	1019	1020	1021	1022	1023
170	1024	1025	1026	1027	1028	1029
171	1030	1031	1032	1033	1034	1035
172	1036	1037	1038	1039	1040	1041
173	1042	1043	1044	1045	1046	1047
174	1048	1049	1050	1051	1052	1053
175	1054	1055	1056	1057	1058	1059
176	1060	1061	1062	1063	1064	1065
177	1066	1067	1068	1069	1070	1071
178	1072	1073	1074	1075	1076	1077
179	1078	1079	1080	1081	1082	1083
180	1084	1085	1086	1087	1088	1089
181	1090	1091	1092	1093	1094	1095
182	1096	1097	1098	1099	1100	1101
183	1102	1103	1104	1105	1106	1107
184	1108	1109	1110	1111	1112	1113
185	1114	1115	1116	1117	1118	1119
186	1120	1121	1122	1123	1124	1125
187	1126	1127	1128	1129	1130	1131
188	1132	1133	1134	1135	1136	1137
189	1138	1139	1140	1141	1142	1143
190	1144	1145	1146	1147	1148	1149
191	1150	1151	1152	1153	1154	1155
192	1156	1157	1158	1159	1160	1161
193	1162	1163	1164	1165	1166	1167
194	1168	1169	1170	1171	1172	1173
195	1174	1175	1176	1177	1178	1179
196	1180	1181	1182	1183	1184	1185
197	1186	1187	1188	1189	1190	1191
198	1192	1193	1194	1195	1196	1197
199						



TABLE XI. RAW SCORES FOR THE NINTH GRADE  
PUEBLO BOYS

Pitch	Intensity	Time	Tonal-memory	Rhythm
42	51	60	11	36
44	41	82	29	35
55	59	79	17	34
48	49	70	17	36
30	41	76	12	24
56	57	88	15	40
52	77	87	28	36
71	42	42	16	35
59	67	82	33	40
37	79	62	09	34
41	50	67	17	36
16	85	77	28	33
50	84	85	17	33
53	46	82	13	37
43	78	81	22	43
58	46	68	13	35
37	43	53	15	40
55	86	70	39	44
51	71	69	25	32



THE JOURNAL OF THE AMERICAN MEDICAL ASSOCIATION  
PUBLISHED WEEKLY  
CHICAGO, ILL., MAY 1, 1914

CONTENTS

Page	Page	Page	Page	Page
1	1	1	1	1
2	2	2	2	2
3	3	3	3	3
4	4	4	4	4
5	5	5	5	5
6	6	6	6	6
7	7	7	7	7
8	8	8	8	8
9	9	9	9	9
10	10	10	10	10
11	11	11	11	11
12	12	12	12	12
13	13	13	13	13
14	14	14	14	14
15	15	15	15	15
16	16	16	16	16
17	17	17	17	17
18	18	18	18	18
19	19	19	19	19
20	20	20	20	20
21	21	21	21	21
22	22	22	22	22
23	23	23	23	23
24	24	24	24	24
25	25	25	25	25
26	26	26	26	26
27	27	27	27	27
28	28	28	28	28
29	29	29	29	29
30	30	30	30	30
31	31	31	31	31
32	32	32	32	32
33	33	33	33	33
34	34	34	34	34
35	35	35	35	35
36	36	36	36	36
37	37	37	37	37
38	38	38	38	38
39	39	39	39	39
40	40	40	40	40
41	41	41	41	41
42	42	42	42	42
43	43	43	43	43
44	44	44	44	44
45	45	45	45	45
46	46	46	46	46
47	47	47	47	47
48	48	48	48	48
49	49	49	49	49
50	50	50	50	50
51	51	51	51	51
52	52	52	52	52
53	53	53	53	53
54	54	54	54	54
55	55	55	55	55
56	56	56	56	56
57	57	57	57	57
58	58	58	58	58
59	59	59	59	59
60	60	60	60	60
61	61	61	61	61
62	62	62	62	62



TABLE XI. (CONTINUED)

Pitch	Intensity	Time	Tonal-memory	Rhythm
64	61	65	16	35
60	53	86	27	34
59	79	71	25	32
79	83	77	25	28
46	83	61	15	28
49	77	81	21	36
44	79	46	23	26
68	85	82	10	34
73	82	92	33	37
45	56	55	26	39
65	94	77	22	40
53	79	46	24	32



# UNITED STATES OF AMERICA

DEPARTMENT OF THE INTERIOR

MINERAL LANDS DIVISION

10	11	12	13	14
15	16	17	18	19
20	21	22	23	24
25	26	27	28	29
30	31	32	33	34
35	36	37	38	39
40	41	42	43	44
45	46	47	48	49
50	51	52	53	54
55	56	57	58	59
60	61	62	63	64
65	66	67	68	69
70	71	72	73	74
75	76	77	78	79
80	81	82	83	84
85	86	87	88	89
90	91	92	93	94
95	96	97	98	99
100	101	102	103	104

UNITED STATES OF AMERICA

GEORGE JOSEPH BROWN



TABLE XII. RAW SCORES FOR THE NINTH GRADE

## PUEBLO GIRLS

Pitch	Intensity	Time	Tonal-memory	Rhythm
46	40	81	23	32
65	57	73	28	36
56	39	43	16	31
63	63	69	23	31
62	66	71	10	29
73	55	73	20	31
66	76	72	31	38
71	74	76	30	37
72	69	64	36	35
45	53	39	19	34
64	49	51	19	33
47	46	69	24	31
70	84	61	22	41
73	75	61	14	31
67	77	60	25	23
81	87	81	25	31
42	56	77	20	33
46	50	60	18	22
56	43	77	22	21



# THE NEW YORK PUBLIC LIBRARY

## ASTEN LENOX TILDEN FOUNDATION

RECEIVED			
DATE	BY	FROM	TO
1891	11	11	11
1892	12	12	12
1893	13	13	13
1894	14	14	14
1895	15	15	15
1896	16	16	16
1897	17	17	17
1898	18	18	18
1899	19	19	19
1900	20	20	20
1901	21	21	21
1902	22	22	22
1903	23	23	23
1904	24	24	24
1905	25	25	25
1906	26	26	26
1907	27	27	27
1908	28	28	28
1909	29	29	29
1910	30	30	30
1911	31	31	31
1912	32	32	32
1913	33	33	33
1914	34	34	34
1915	35	35	35
1916	36	36	36
1917	37	37	37
1918	38	38	38
1919	39	39	39
1920	40	40	40
1921	41	41	41
1922	42	42	42
1923	43	43	43
1924	44	44	44
1925	45	45	45
1926	46	46	46
1927	47	47	47
1928	48	48	48
1929	49	49	49
1930	50	50	50
1931	51	51	51
1932	52	52	52
1933	53	53	53
1934	54	54	54
1935	55	55	55
1936	56	56	56
1937	57	57	57
1938	58	58	58
1939	59	59	59
1940	60	60	60
1941	61	61	61
1942	62	62	62
1943	63	63	63
1944	64	64	64
1945	65	65	65
1946	66	66	66
1947	67	67	67
1948	68	68	68
1949	69	69	69
1950	70	70	70
1951	71	71	71
1952	72	72	72
1953	73	73	73
1954	74	74	74
1955	75	75	75
1956	76	76	76
1957	77	77	77
1958	78	78	78
1959	79	79	79
1960	80	80	80
1961	81	81	81
1962	82	82	82
1963	83	83	83
1964	84	84	84
1965	85	85	85
1966	86	86	86
1967	87	87	87
1968	88	88	88
1969	89	89	89
1970	90	90	90
1971	91	91	91
1972	92	92	92
1973	93	93	93
1974	94	94	94
1975	95	95	95
1976	96	96	96
1977	97	97	97
1978	98	98	98
1979	99	99	99
1980	100	100	100



TABLE XII. (CONTINUED)

Pitch	Intensity	Time	Tonal-memory	Rhythm
86	86	70	15	23
89	86	72	45	43
45	68	56	17	34
55	68	66	14	29
39	64	47	19	33
53	45	52	20	26
84	88	80	47	39
63	58	73	23	36
65	67	56	30	39
67	74	75	28	35
62	66	71	10	29
73	55	73	20	31



# CONFIDENTIAL FORM

(OPTIONAL FORM NO. 10)

## PROPERTY

PROPERTY	QUANTITY	UNIT	VALUE	DATE
1	10	DOZ	100	10/1
2	20	DOZ	200	10/1
3	15	DOZ	150	10/1
4	12	DOZ	120	10/1
5	18	DOZ	180	10/1
6	25	DOZ	250	10/1
7	30	DOZ	300	10/1
8	35	DOZ	350	10/1
9	40	DOZ	400	10/1
10	45	DOZ	450	10/1
11	50	DOZ	500	10/1
12	55	DOZ	550	10/1
13	60	DOZ	600	10/1
14	65	DOZ	650	10/1
15	70	DOZ	700	10/1
16	75	DOZ	750	10/1
17	80	DOZ	800	10/1
18	85	DOZ	850	10/1
19	90	DOZ	900	10/1
20	95	DOZ	950	10/1



TABLE XIII. RAW SCORES FOR THE TENTH GRADE

## NAVAJO BOYS

Pitch	Intensity	Time	Tonal-memory	Rhythm
60	45	75	8	27
58	21	77	19	38
70	74	75	9	37
55	44	44	18	36
38	62	74	20	37
75	45	84	40	37
49	48	60	11	24
52	41	61	13	24
64	53	81	24	32
60	53	59	31	32
50	52	87	13	28
75	49	47	18	29
58	45	76	20	36
44	51	64	16	30
55	49	67	17	31
42	48	54	21	26
52	73	84	11	30
68	91	88	34	40
56	74	75	21	36



# OFFICE OF THE SECRETARY OF THE ARMY

## STATE OF NEW YORK

NAME	RESIDENCE	EDUCATION	EXPERIENCE	REMARKS
1	2	3	4	5
6	7	8	9	10
11	12	13	14	15
16	17	18	19	20
21	22	23	24	25
26	27	28	29	30
31	32	33	34	35
36	37	38	39	40
41	42	43	44	45
46	47	48	49	50
51	52	53	54	55
56	57	58	59	60
61	62	63	64	65
66	67	68	69	70
71	72	73	74	75
76	77	78	79	80
81	82	83	84	85
86	87	88	89	90
91	92	93	94	95
96	97	98	99	100



TABLE XIV. RAW SCORES FOR THE TENTH GRADE

## NAVAJO GIRLS

Pitch	Intensity	Time	Tonal-memory	Rhythm
69	50	58	13	31
47	56	54	9	27
20	54	60	14	20
57	46	53	15	26
48	63	77	12	28
54	45	80	12	15
65	50	61	23	37
73	85	71	37	37
75	74	85	34	31
64	79	75	27	17
66	67	56	22	28
47	72	62	13	20



# THE UNIVERSITY OF CHICAGO LIBRARY

DATE	CLASS	NUMBER	PRICE	REMARKS
10	10	10	10	10
11	11	11	11	11
12	12	12	12	12
13	13	13	13	13
14	14	14	14	14
15	15	15	15	15
16	16	16	16	16
17	17	17	17	17
18	18	18	18	18
19	19	19	19	19
20	20	20	20	20
21	21	21	21	21
22	22	22	22	22
23	23	23	23	23
24	24	24	24	24
25	25	25	25	25
26	26	26	26	26
27	27	27	27	27
28	28	28	28	28
29	29	29	29	29
30	30	30	30	30



TABLE XV. RAW SCORES FOR THE TENTH GRADE

## PUEBLO BOYS

Pitch	Intensity	Time	Tonal-memory	Rhythm
49	32	64	17	33
38	74	73	15	31
43	54	71	13	42
48	43	70	14	38
35	51	71	27	39
88	96	78	44	45
54	36	56	20	31
49	55	60	17	31
53	45	55	15	31
75	21	86	21	35
50	86	81	14	34
58	62	72	13	23
52	86	83	36	39
43	90	85	20	35
45	66	51	22	34
54	48	66	30	31
56	50	70	33	30



DATE	DESCRIPTION	AMOUNT	CHECK NO.	BANK
------	-------------	--------	-----------	------

12	12	12	12	12
13	13	13	13	13
14	14	14	14	14
15	15	15	15	15
16	16	16	16	16
17	17	17	17	17
18	18	18	18	18
19	19	19	19	19
20	20	20	20	20
21	21	21	21	21
22	22	22	22	22
23	23	23	23	23
24	24	24	24	24
25	25	25	25	25
26	26	26	26	26
27	27	27	27	27
28	28	28	28	28
29	29	29	29	29
30	30	30	30	30
31	31	31	31	31



TABLE XVII. RAW SCORES FOR THE ELEVENTH GRADE

## NAVAJO BOYS

Pitch	Intensity	Time	Tonal-memory	Rhythm
64	44	71	23	30
33	46	55	24	41
59	47	73	22	32
52	45	71	23	27
49	37	82	25	26
40	73	87	45	36
31	73	46	25	39
25	63	41	31	32
29	50	48	13	40
53	52	62	26	39
53	17	58	19	18
66	88	53	31	18
57	60	61	11	22
70	44	73	17	29
60	51	70	24	30
83	49	40	32	26
42	75	81	24	23
68	75	71	20	37
78	98	87	30	27
65	48	66	19	27



# BIOGRAPHICAL MEMOIRS

## OF

Year	Age	Place	Event
1871	11	St. Louis	Born
1872	12	St. Louis	First Communion
1873	13	St. Louis	Entered school
1874	14	St. Louis	Graduated
1875	15	St. Louis	Entered college
1876	16	St. Louis	Graduated
1877	17	St. Louis	Entered law office
1878	18	St. Louis	Graduated
1879	19	St. Louis	Entered law office
1880	20	St. Louis	Graduated
1881	21	St. Louis	Entered law office
1882	22	St. Louis	Graduated
1883	23	St. Louis	Entered law office
1884	24	St. Louis	Graduated
1885	25	St. Louis	Entered law office
1886	26	St. Louis	Graduated
1887	27	St. Louis	Entered law office
1888	28	St. Louis	Graduated
1889	29	St. Louis	Entered law office
1890	30	St. Louis	Graduated
1891	31	St. Louis	Entered law office
1892	32	St. Louis	Graduated
1893	33	St. Louis	Entered law office
1894	34	St. Louis	Graduated
1895	35	St. Louis	Entered law office
1896	36	St. Louis	Graduated
1897	37	St. Louis	Entered law office
1898	38	St. Louis	Graduated
1899	39	St. Louis	Entered law office
1900	40	St. Louis	Graduated



TABLE XVII. (CONTINUED)

Pitch	Intensity	Time	Tonal-memory	Rhythm
50	65	78	29	36
80	50	86	46	31
40	48	65	23	32
47	69	59	12	21
37	72	76	22	25
86	95	98	35	47
62	81	81	24	34
83	60	59	16	27
50	69	74	19	36
67	86	81	19	33
53	47	68	25	32
50	52	85	10	28
45	77	80	24	45
74	82	82	35	42



Person	Address	Age	Sex	Occupation
10	100	20	M	Student
20	200	30	F	Teacher
30	300	40	M	Engineer
40	400	50	F	Homemaker
50	500	60	M	Doctor
60	600	70	F	Nurse
70	700	80	M	Lawyer
80	800	90	F	Artist
90	900	100	M	Scientist
100	1000	110	F	Writer
110	1100	120	M	Musician
120	1200	130	F	Dancer
130	1300	140	M	Actor
140	1400	150	F	Model
150	1500	160	M	Entrepreneur
160	1600	170	F	Businesswoman
170	1700	180	M	Investor
180	1800	190	F	Philanthropist
190	1900	200	M	Historian
200	2000	210	F	Archaeologist

CONFIDENTIAL FORM



TABLE XVIII. RAW SCORES FOR THE ELEVENTH GRADE  
NAVAJO GIRLS

Pitch	Intensity	Time	Tonal-memory	Rhythm
58	67	67	16	33
52	57	49	17	23
64	78	71	17	31
36	56	50	14	30
64	53	56	25	31
40	48	51	16	38
35	48	47	12	9
54	70	76	18	30
43	77	72	24	27
19	35	28	21	24
36	75	61	18	31
43	44	45	13	21
50	81	62	17	31
48	31	59	19	31
72	89	76	36	34
57	71	30	41	41



Year	Month	Day	Time	Location	Notes
1900	Jan	1	10:00	St. Paul	Arrived
1900	Jan	2	11:00	St. Paul	Left
1900	Jan	3	12:00	St. Paul	Arrived
1900	Jan	4	13:00	St. Paul	Left
1900	Jan	5	14:00	St. Paul	Arrived
1900	Jan	6	15:00	St. Paul	Left
1900	Jan	7	16:00	St. Paul	Arrived
1900	Jan	8	17:00	St. Paul	Left
1900	Jan	9	18:00	St. Paul	Arrived
1900	Jan	10	19:00	St. Paul	Left
1900	Jan	11	20:00	St. Paul	Arrived
1900	Jan	12	21:00	St. Paul	Left
1900	Jan	13	22:00	St. Paul	Arrived
1900	Jan	14	23:00	St. Paul	Left
1900	Jan	15	24:00	St. Paul	Arrived
1900	Jan	16	25:00	St. Paul	Left
1900	Jan	17	26:00	St. Paul	Arrived
1900	Jan	18	27:00	St. Paul	Left
1900	Jan	19	28:00	St. Paul	Arrived
1900	Jan	20	29:00	St. Paul	Left
1900	Jan	21	30:00	St. Paul	Arrived
1900	Jan	22	31:00	St. Paul	Left
1900	Jan	23	32:00	St. Paul	Arrived
1900	Jan	24	33:00	St. Paul	Left
1900	Jan	25	34:00	St. Paul	Arrived
1900	Jan	26	35:00	St. Paul	Left
1900	Jan	27	36:00	St. Paul	Arrived
1900	Jan	28	37:00	St. Paul	Left
1900	Jan	29	38:00	St. Paul	Arrived
1900	Jan	30	39:00	St. Paul	Left
1900	Jan	31	40:00	St. Paul	Arrived

ORIGINAL FILE NO.



TABLE XIX. RAW SCORES FOR THE ELEVENTH GRADE  
PUEBLO BOYS

Pitch	Intensity	Time	Tonal-memory	Rhythm
92	77	64	32	37
80	89	85	42	41
50	74	82	23	35
45	54	63	13	33
29	66	74	24	27
48	94	66	14	36
52	68	64	28	35
68	77	81	17	32
51	67	48	16	35
39	79	50	12	34
45	79	73	22	33
29	51	78	12	38
55	40	74	23	42
48	90	89	26	43
59	64	67	15	40
58	62	89	35	43
45	80	63	24	36



TABLE 1. THE 1970-1971 FISHING SEASON

1970-1971

Month	1970	1971	1972	1973	1974
Jan	10	15	12	18	14
Feb	12	18	15	20	16
Mar	15	22	18	25	20
Apr	18	25	22	30	24
May	22	30	28	35	28
Jun	25	35	32	40	32
Jul	28	38	35	45	35
Aug	30	40	38	48	38
Sep	32	42	40	50	40
Oct	35	45	42	52	42
Nov	38	48	45	55	45
Dec	40	50	48	58	48
Total	350	450	400	500	420



TABLE XX. RAW SCORES FOR THE ELEVENTH GRADE  
PUEBLO GIRLS

Pitch	Intensity	Time	Tonal-memory	Rhythm
54	52	46	25	32
66	54	66	34	37
55	55	52	19	24
40	52	61	20	28
59	84	75	29	34
48	57	45	18	20
52	85	73	23	29
70	84	71	16	32
31	63	65	21	38
60	80	63	25	32
45	80	63	24	36



1944	1945	1946	1947	1948
1	1	1	1	1
2	2	2	2	2
3	3	3	3	3
4	4	4	4	4
5	5	5	5	5
6	6	6	6	6
7	7	7	7	7
8	8	8	8	8
9	9	9	9	9
10	10	10	10	10
11	11	11	11	11
12	12	12	12	12
13	13	13	13	13
14	14	14	14	14
15	15	15	15	15
16	16	16	16	16
17	17	17	17	17
18	18	18	18	18
19	19	19	19	19
20	20	20	20	20

CONFIDENTIAL

CONFIDENTIAL



TABLE XXI. RAW SCORES FOR THE TWELFTH GRADE

## NAVAJO BOYS

Pitch	Intensity	Time	Tonal-memory	Rhythm
55	79	72	18	31
60	47	56	16	23
61	55	65	19	29
82	46	59	27	34
59	90	62	23	39
50	71	71	26	38
56	79	75	17	39
77	86	73	27	34
62	70	78	29	35
43	54	64	17	32
54	19	64	13	32
54	70	83	30	30
50	60	84	24	33
60	64	80	25	35
61	82	83	27	38
53	70	60	18	30
45	79	70	21	27
54	50	85	21	24
49	84	80	19	35







TABLE XXI. (CONTINUED)

Pitch	Intensity	Time	Tonal-memory	Rhythm
63	57	81	32	31
44	77	64	16	30



(771240) 101 1011 1011

1011	1011	1011	1011	1011
1011	1011	1011	1011	1011
1011	1011	1011	1011	1011

CORPORATE BOND

1011 1011 1011 1011 1011



TABLE XXII. RAW SCORES FOR THE TWELFTH GRADE

## NAVAJO GIRLS

Pitch	Intensity	Time	Tonal-memory	Rhythm
47	46	61	18	29
57	80	69	35	36
52	47	46	18	23
41	61	46	14	26
47	50	69	10	27
55	40	63	14	23
24	69	53	16	29
27	50	62	17	48
38	64	67	16	26
48	85	75	14	29
58	44	75	16	33



# TABLE 1. - SUMMARY OF DATA

1960-1961

Year	Location	Time	Temperature	Humidity
1960	10	10	10	10
1961	20	20	20	20
1962	30	30	30	30
1963	40	40	40	40
1964	50	50	50	50
1965	60	60	60	60
1966	70	70	70	70
1967	80	80	80	80
1968	90	90	90	90
1969	100	100	100	100
1970	110	110	110	110
1971	120	120	120	120
1972	130	130	130	130
1973	140	140	140	140
1974	150	150	150	150
1975	160	160	160	160
1976	170	170	170	170
1977	180	180	180	180
1978	190	190	190	190
1979	200	200	200	200
1980	210	210	210	210
1981	220	220	220	220
1982	230	230	230	230
1983	240	240	240	240
1984	250	250	250	250
1985	260	260	260	260
1986	270	270	270	270
1987	280	280	280	280
1988	290	290	290	290
1989	300	300	300	300
1990	310	310	310	310
1991	320	320	320	320
1992	330	330	330	330
1993	340	340	340	340
1994	350	350	350	350
1995	360	360	360	360
1996	370	370	370	370
1997	380	380	380	380
1998	390	390	390	390
1999	400	400	400	400
2000	410	410	410	410
2001	420	420	420	420
2002	430	430	430	430
2003	440	440	440	440
2004	450	450	450	450
2005	460	460	460	460
2006	470	470	470	470
2007	480	480	480	480
2008	490	490	490	490
2009	500	500	500	500
2010	510	510	510	510
2011	520	520	520	520
2012	530	530	530	530
2013	540	540	540	540
2014	550	550	550	550
2015	560	560	560	560
2016	570	570	570	570
2017	580	580	580	580
2018	590	590	590	590
2019	600	600	600	600
2020	610	610	610	610
2021	620	620	620	620
2022	630	630	630	630
2023	640	640	640	640
2024	650	650	650	650
2025	660	660	660	660
2026	670	670	670	670
2027	680	680	680	680
2028	690	690	690	690
2029	700	700	700	700
2030	710	710	710	710
2031	720	720	720	720
2032	730	730	730	730
2033	740	740	740	740
2034	750	750	750	750
2035	760	760	760	760
2036	770	770	770	770
2037	780	780	780	780
2038	790	790	790	790
2039	800	800	800	800
2040	810	810	810	810
2041	820	820	820	820
2042	830	830	830	830
2043	840	840	840	840
2044	850	850	850	850
2045	860	860	860	860
2046	870	870	870	870
2047	880	880	880	880
2048	890	890	890	890
2049	900	900	900	900
2050	910	910	910	910
2051	920	920	920	920
2052	930	930	930	930
2053	940	940	940	940
2054	950	950	950	950
2055	960	960	960	960
2056	970	970	970	970
2057	980	980	980	980
2058	990	990	990	990
2059	1000	1000	1000	1000
2060	1010	1010	1010	1010
2061	1020	1020	1020	1020
2062	1030	1030	1030	1030
2063	1040	1040	1040	1040
2064	1050	1050	1050	1050
2065	1060	1060	1060	1060
2066	1070	1070	1070	1070
2067	1080	1080	1080	1080
2068	1090	1090	1090	1090
2069	1100	1100	1100	1100
2070	1110	1110	1110	1110
2071	1120	1120	1120	1120
2072	1130	1130	1130	1130
2073	1140	1140	1140	1140
2074	1150	1150	1150	1150
2075	1160	1160	1160	1160
2076	1170	1170	1170	1170
2077	1180	1180	1180	1180
2078	1190	1190	1190	1190
2079	1200	1200	1200	1200
2080	1210	1210	1210	1210
2081	1220	1220	1220	1220
2082	1230	1230	1230	1230
2083	1240	1240	1240	1240
2084	1250	1250	1250	1250
2085	1260	1260	1260	1260
2086	1270	1270	1270	1270
2087	1280	1280	1280	1280
2088	1290	1290	1290	1290
2089	1300	1300	1300	1300
2090	1310	1310	1310	1310
2091	1320	1320	1320	1320
2092	1330	1330	1330	1330
2093	1340	1340	1340	1340
2094	1350	1350	1350	1350
2095	1360	1360	1360	1360
2096	1370	1370	1370	1370
2097	1380	1380	1380	1380
2098	1390	1390	1390	1390
2099	1400	1400	1400	1400
2100	1410	1410	1410	1410
2101	1420	1420	1420	1420
2102	1430	1430	1430	1430
2103	1440	1440	1440	1440
2104	1450	1450	1450	1450
2105	1460	1460	1460	1460
2106	1470	1470	1470	1470
2107	1480	1480	1480	1480
2108	1490	1490	1490	1490
2109	1500	1500	1500	1500
2110	1510	1510	1510	1510
2111	1520	1520	1520	1520
2112	1530	1530	1530	1530
2113	1540	1540	1540	1540
2114	1550	1550	1550	1550
2115	1560	1560	1560	1560
2116	1570	1570	1570	1570
2117	1580	1580	1580	1580
2118	1590	1590	1590	1590
2119	1600	1600	1600	1600
2120	1610	1610	1610	1610
2121	1620	1620	1620	1620
2122	1630	1630	1630	1630
2123	1640	1640	1640	1640
2124	1650	1650	1650	1650
2125	1660	1660	1660	1660
2126	1670	1670	1670	1670
2127	1680	1680	1680	1680
2128	1690	1690	1690	1690
2129	1700	1700	1700	1700
2130	1710	1710	1710	1710
2131	1720	1720	1720	1720
2132	1730	1730	1730	1730
2133	1740	1740	1740	1740
2134	1750	1750	1750	1750
2135	1760	1760	1760	1760
2136	1770	1770	1770	1770
2137	1780	1780	1780	1780
2138	1790	1790	1790	1790
2139	1800	1800	1800	1800
2140	1810	1810	1810	1810
2141	1820	1820	1820	1820
2142	1830	1830	1830	1830
2143	1840	1840	1840	1840
2144	1850	1850	1850	1850
2145	1860	1860	1860	1860
2146	1870	1870	1870	1870
2147	1880	1880	1880	1880
2148	1890	1890	1890	1890
2149	1900	1900	1900	1900
2150	1910	1910	1910	1910
2151	1920	1920	1920	1920
2152	1930	1930	1930	1930
2153	1940	1940	1940	1940
2154	1950	1950	1950	1950
2155	1960	1960	1960	1960
2156	1970	1970	1970	1970
2157	1980	1980	1980	1980
2158	1990	1990	1990	1990
2159	2000	2000	2000	2000
2160	2010	2010	2010	2010
2161	2020	2020	2020	2020
2162	2030	2030	2030	2030
2163	2040	2040	2040	2040
2164	2050	2050	2050	2050
2165	2060	2060	2060	2060
2166	2070	2070	2070	2070
2167	2080	2080	2080	2080
2168	2090	2090	2090	2090
2169	2100	2100	2100	2100
2170	2110	2110	2110	2110
2171	2120	2120	2120	2120
2172	2130	2130	2130	2130
2173	2140	2140	2140	2140
2174	2150	2150	2150	2150
2175	2160	2160	2160	2160
2176	2170	2170	2170	2170
2177	2180	2180	2180	2180
2178	2190	2190	2190	2190
2179	2200	2200	2200	2200
2180	2210	2210	2210	2210
2181	2220	2220	2220	2220
2182	2230	2230	2230	2230
2183	2240	2240	2240	2240
2184	2250	2250	2250	2250
2185	2260	2260	2260	2260
2186	2270	2270	2270	2270
2187	2280	2280	2280	2280
2188	2290	2290	2290	2290
2189	2300	2300	2300	2300
2190	2310	2310	2310	2310
2191	2320	2320	2320	2320
2192	2330	2330	2330	2330
2193	2340	2340	2340	2340
2194	2350	2350	2350	2350
2195	2360	2360	2360	2360
2196	2370	2370	2370	2370
2197	2380	2380	2380	2380
2198	2390	2390	2390	2390
2199	2400	2400	2400	2400
2200	2410	2410	2410	2410
2201	2420	2420	2420	2420
2202	2430	2430	2430	2430
2203	2440	2440	2440	2440
2204	2450	2450	2450	2450
2205	2460	2460	2460	2460
2206	2470	2470	2470	2470
2207	2480	2480	2480	2480
2				



TABLE XXIII. RAW SCORES FOR THE TWELFTH GRADE

## PUEBLO BOYS

Pitch	Intensity	Time	Tonal-memory	Rhythm
49	59	83	26	39
50	55	71	20	32
66	83	80	18	41
52	70	50	19	24
72	85	82	28	34
63	86	55	17	34
53	81	74	30	29
45	69	65	19	36
58	78	72	17	32
57	47	71	21	42
63	82	63	39	22



TABLE 1. - SUMMARY OF DATA

FOR THE YEAR 1964

Year	1964	1963	1962	1961	1960
1	10	10	10	10	10
2	20	20	20	20	20
3	30	30	30	30	30
4	40	40	40	40	40
5	50	50	50	50	50
6	60	60	60	60	60
7	70	70	70	70	70
8	80	80	80	80	80
9	90	90	90	90	90
10	100	100	100	100	100

TABLE 2. - SUMMARY OF DATA



TABLE XXIV. RAW SCORES FOR THE TWELFTH GRADE  
PUEBLO GIRLS

Pitch	Intensity	Time	Tonal-memory	Rhythm
58	52	56	12	36
46	40	66	09	33
56	57	87	15	29
34	50	51	10	30
60	56	75	26	36
50	74	65	20	41
54	21	79	24	36
66	73	65	35	36
83	97	81	35	34
57	50	47	13	33
54	46	73	23	34
72	42	76	20	29
68	80	76	31	38



# THE UNIVERSITY OF CHICAGO

1910-1911

NAME	RESIDENCE	AGE	SEX	RELATION
------	-----------	-----	-----	----------

1	10	10	10	10
2	11	11	11	11
3	12	12	12	12
4	13	13	13	13
5	14	14	14	14
6	15	15	15	15
7	16	16	16	16
8	17	17	17	17
9	18	18	18	18
10	19	19	19	19
11	20	20	20	20
12	21	21	21	21
13	22	22	22	22
14	23	23	23	23
15	24	24	24	24
16	25	25	25	25
17	26	26	26	26
18	27	27	27	27
19	28	28	28	28
20	29	29	29	29
21	30	30	30	30
22	31	31	31	31
23	32	32	32	32
24	33	33	33	33
25	34	34	34	34
26	35	35	35	35
27	36	36	36	36
28	37	37	37	37
29	38	38	38	38
30	39	39	39	39
31	40	40	40	40
32	41	41	41	41
33	42	42	42	42
34	43	43	43	43
35	44	44	44	44
36	45	45	45	45
37	46	46	46	46
38	47	47	47	47
39	48	48	48	48
40	49	49	49	49
41	50	50	50	50
42	51	51	51	51
43	52	52	52	52
44	53	53	53	53
45	54	54	54	54
46	55	55	55	55
47	56	56	56	56
48	57	57	57	57
49	58	58	58	58
50	59	59	59	59
51	60	60	60	60
52	61	61	61	61
53	62	62	62	62
54	63	63	63	63
55	64	64	64	64
56	65	65	65	65
57	66	66	66	66
58	67	67	67	67
59	68	68	68	68
60	69	69	69	69
61	70	70	70	70
62	71	71	71	71
63	72	72	72	72
64	73	73	73	73
65	74	74	74	74
66	75	75	75	75
67	76	76	76	76
68	77	77	77	77
69	78	78	78	78
70	79	79	79	79
71	80	80	80	80
72	81	81	81	81
73	82	82	82	82
74	83	83	83	83
75	84	84	84	84
76	85	85	85	85
77	86	86	86	86
78	87	87	87	87
79	88	88	88	88
80	89	89	89	89
81	90	90	90	90
82	91	91	91	91
83	92	92	92	92
84	93	93	93	93
85	94	94	94	94
86	95	95	95	95
87	96	96	96	96
88	97	97	97	97
89	98	98	98	98
90	99	99	99	99
91	100	100	100	100

NAME	RESIDENCE	AGE	SEX	RELATION
------	-----------	-----	-----	----------

1	10	10	10	10
2	11	11	11	11
3	12	12	12	12
4	13	13	13	13
5	14	14	14	14
6	15	15	15	15
7	16	16	16	16
8	17	17	17	17
9	18	18	18	18
10	19	19	19	19
11	20	20	20	20
12	21	21	21	21
13	22	22	22	22
14	23	23	23	23
15	24	24	24	24
16	25	25	25	25
17	26	26	26	26
18	27	27	27	27
19	28	28	28	28
20	29	29	29	29
21	30	30	30	30
22	31	31	31	31
23	32	32	32	32
24	33	33	33	33
25	34	34	34	34
26	35	35	35	35
27	36	36	36	36
28	37	37	37	37
29	38	38	38	38
30	39	39	39	39
31	40	40	40	40
32	41	41	41	41
33	42	42	42	42
34	43	43	43	43
35	44	44	44	44
36	45	45	45	45
37	46	46	46	46
38	47	47	47	47
39	48	48	48	48
40	49	49	49	49
41	50	50	50	50
42	51	51	51	51
43	52	52	52	52
44	53	53	53	53
45	54	54	54	54
46	55	55	55	55
47	56	56	56	56
48	57	57	57	57
49	58	58	58	58
50	59	59	59	59
51	60	60	60	60
52	61	61	61	61
53	62	62	62	62
54	63	63	63	63
55	64	64	64	64
56	65	65	65	65
57	66	66	66	66
58	67	67	67	67
59	68	68	68	68
60	69	69	69	69
61	70	70	70	70
62	71	71	71	71
63	72	72	72	72
64	73	73	73	73
65	74	74	74	74
66	75	75	75	75
67	76	76	76	76
68	77	77	77	77
69	78	78	78	78
70	79	79	79	79
71	80	80	80	80
72	81	81	81	81
73	82	82	82	82
74	83	83	83	83
75	84	84	84	84
76	85	85	85	85
77	86	86	86	86
78	87	87	87	87
79	88	88	88	88
80	89	89	89	89
81	90	90	90	90
82	91	91	91	91
83	92	92	92	92
84	93	93	93	93
85	94	94	94	94
86	95	95	95	95
87	96	96	96	96
88	97	97	97	97
89	98	98	98	98
90	99	99	99	99
91	100	100	100	100



## CHAPTER III

## RESULTS

TABLE XXV. TONAL-MEMORY FOR THE  
SEVENTH GRADE

Tribe	No.	Mean	S.D.	$\sigma_M$	$\sigma_{diff}$	$\frac{D}{\sigma_{diff}}$
Pueblo	108	17.44	5.75	.553		
Navajo	64	17.94	4.93	.616	.814	.61

TABLE XXVI. PITCH FOR THE  
SEVENTH GRADE

Tribe	No.	Mean	S.D.	$\sigma_M$	$\sigma_{diff}$	$\frac{D}{\sigma_{diff}}$
Pueblo	108	51.08	9.00	.866		
Navajo	64	54.14	10.95	1.371	1.620	1.88

TABLE XXVII. INTENSITY FOR THE  
SEVENTH GRADE

Tribe	No.	Mean	S.D.	$\sigma_M$	$\sigma_{diff}$	$\frac{D}{\sigma_{diff}}$
Pueblo	108	56.615	13.048	1.255		
Navajo	64	56.678	13.662	1.708	2.117	.026



1911

1912

1913

1914

1915

1911	1912	1913	1914	1915
1916	1917	1918	1919	1920
1921	1922	1923	1924	1925
1926	1927	1928	1929	1930

1931	1932	1933	1934	1935
1936	1937	1938	1939	1940
1941	1942	1943	1944	1945
1946	1947	1948	1949	1950

1951	1952	1953	1954	1955
1956	1957	1958	1959	1960
1961	1962	1963	1964	1965
1966	1967	1968	1969	1970

1971	1972	1973	1974	1975
1976	1977	1978	1979	1980
1981	1982	1983	1984	1985
1986	1987	1988	1989	1990

1991	1992	1993	1994	1995
1996	1997	1998	1999	2000
2001	2002	2003	2004	2005
2006	2007	2008	2009	2010



TABLE XXVIII. TIME FOR THE  
SEVENTH GRADE

Tribe	No.	Mean	S.D.	$\overline{O}M$	$\overline{O}diff$	$\frac{D}{\overline{O}diff}$
Pueblo	108	56.13	11.90	1.145		
Navajo	64	61.23	7.98	.996	1.517	3.35

TABLE XXIX. RHYTHM FOR THE  
SEVENTH GRADE

Tribe	No.	Mean	S.D.	$\overline{O}M$	$\overline{O}diff$	$\frac{D}{\overline{O}diff}$
Pueblo	108	31.68	5.50	.529		
Navajo	64	29.56	5.01	.626	.814	2.61

Table XXV indicates that the chances are 7,291 in 10,000 that the Navajo is superior in tonal memory. In pitch discrimination (Table XXVI) the chances are 9,699 in 10,000 that the Navajo is superior. The chances are (Table XXVII) 5,120 in 10,000 that the Navajo is superior in intensity. The chances are (Table XXVIII) 9,996 in 10,000 that the Navajo is superior in time discrimination. Table XXIX the chances are 9,955 in 10,000 that the Pueblo is superior in rhythm.







TABLE XXX. TONAL-MEMORY FOR THE  
EIGHTH GRADE

Tribe	No.	Mean	S.D.	$\sigma_M$	$\sigma_{diff}$	$\frac{D}{\sigma_{diff}}$
Pueblo	67	17.59	5.63	.688		
Navajo	80	18.77	5.48	.613	.922	1.71

TABLE XXXI. PITCH FOR THE  
EIGHTH GRADE

Tribe	No.	Mean	S.D.	$\sigma_M$	$\sigma_{diff}$	$\frac{D}{\sigma_{diff}}$
Pueblo	67	49.22	13.26	1.620		
Navajo	80	54.06	12.61	1.410	2.147	.30

TABLE XXXII. INTENSITY FOR THE  
EIGHTH GRADE

Tribe	No.	Mean	S.D.	$\sigma_M$	$\sigma_{diff}$	$\frac{D}{\sigma_{diff}}$
Pueblo	67	59.21	12.78	1.56		
Navajo	80	56.68	13.91	1.55	2.203	1.14



TABLE 1	
Year	Value
1950	100
1951	105
1952	110
1953	115
1954	120
1955	125
1956	130
1957	135
1958	140
1959	145
1960	150

TABLE 2	
Year	Value
1950	100
1951	105
1952	110
1953	115
1954	120
1955	125
1956	130
1957	135
1958	140
1959	145
1960	150

TABLE 3	
Year	Value
1950	100
1951	105
1952	110
1953	115
1954	120
1955	125
1956	130
1957	135
1958	140
1959	145
1960	150



TABLE XXXIII. TIME FOR THE  
EIGHTH GRADE

Tribes	No.	Mean	S.D.	$\sigma_M$	$\sigma_{diff}$	$\frac{D}{\sigma_{diff}}$
Pueblo	67	64.51	12.68	1.55		
Navajo	80	63.07	9.95	1.11	1.905	1.45

TABLE XXXIV. RHYTHM FOR THE  
EIGHTH GRADE

Tribes	No.	Mean	S.D.	$\sigma_M$	$\sigma_{diff}$	$\frac{D}{\sigma_{diff}}$
Pueblo	67	34.55	4.97	.607		
Navajo	80	31.10	4.48	.501	.793	4.35

Table XXX indicates that the chances are 9,564 in 10,000 that the Navajo is superior in tonal memory. In pitch discrimination (Table XXXI) the chances are 6,179 in 10,000 that the Navajo is superior. Table XXXII the chances are 8,729 in 10,000 that the Pueblo is superior in intensity. The chances are (Table XXXIII) 9,265 in 10,000 that the Pueblo is superior in time discrimination. Table XXXIV the chances are 9,999 in 10,000 that the Pueblo is superior in rhythm.



05-03-2009



TABLE XXXV. TONAL-MEMORY FOR THE  
NINTH GRADE

Tribe	No.	Mean	S.D.	$\sigma_M$	$\sigma_{diff}$	$\frac{D}{\sigma_{diff}}$
Pueblo	60	22.60	8.16	1.04		
Navajo	61	19.33	7.56	.96	1.421	2.29

TABLE XXXVI. PITCH FOR THE  
NINTH GRADE

Tribe	No.	Mean	S.D.	$\sigma_M$	$\sigma_{diff}$	$\frac{D}{\sigma_{diff}}$
Pueblo	60	57.50	13.68	1.76		
Navajo	61	57.91	13.41	1.71	2.453	.16

TABLE XXXVII. INTENSITY FOR THE  
NINTH GRADE

Tribe	No.	Mean	S.D.	$\sigma_M$	$\sigma_{diff}$	$\frac{D}{\sigma_{diff}}$
Pueblo	60	65.75	15.54	2.00		
Navajo	61	69.38	19.01	2.42	3.144	1.15



# TABLE 1. - SUMMARY OF DATA

Continued

TABLE 1. - SUMMARY OF DATA			
State	Year	Population	Area
Alabama	1950	2,049,457	52,420
Alabama	1960	2,490,821	52,420
Alabama	1970	2,818,387	52,420

## TABLE 2. - SUMMARY OF DATA

Continued

TABLE 2. - SUMMARY OF DATA			
State	Year	Population	Area
Alabama	1950	2,049,457	52,420
Alabama	1960	2,490,821	52,420
Alabama	1970	2,818,387	52,420

## TABLE 3. - SUMMARY OF DATA

Continued

TABLE 3. - SUMMARY OF DATA			
State	Year	Population	Area
Alabama	1950	2,049,457	52,420
Alabama	1960	2,490,821	52,420
Alabama	1970	2,818,387	52,420



TABLE XXXVIII. TIME FOR THE  
NINTH GRADE

Tribe	No.	Mean	S.D.	$\sigma_M$	$\sigma_{diff}$	$\frac{D}{\sigma_{diff}}$
Pueblo	60	69.29	12.54	1.62		
Navajo	61	65.67	11.19	1.43	1.634	2.21

TABLE XXXIX. RHYTHM FOR THE  
NINTH GRADE

Tribe	No.	Mean	S.D.	$\sigma_M$	$\sigma_{diff}$	$\frac{D}{\sigma_{diff}}$
Pueblo	60	34.16	5.17	.662		
Navajo	61	30.86	5.46	.699	.96	3.42

Table XXXV indicates that the chances are 9,890 in 10,000 that the Pueblo is superior in tonal memory. Table XXXVI indicates that the chances are 5,636 in 10,000 that the Navajo is superior in pitch discrimination. The chances are (Table XXXVII) 8, 749 in 10,000 that the Navajo is superior in intensity. In time discrimination (Table XXXVIII) the chances are 9,864 in 10,000 that the Pueblo is superior. Table XXXIX the chances are 9,996 in 10,000 that the Pueblo is superior in rhythm.



1. The first of these is the fact that the  
 2.

3. The second of these is the fact that the  
 4.

5. The third of these is the fact that the  
 6.

7. The fourth of these is the fact that the  
 8.

9. The fifth of these is the fact that the  
 10.

11. The sixth of these is the fact that the  
 12.



TABLE XL. TONAL-MEMORY FOR THE  
TENTH GRADE

Tribe	No.	Mean	S.D.	$\sigma_M$	$\sigma_{diff}$	$\frac{D}{\sigma_{diff}}$
Pueblo	31	21.93	8.70	1.56		
Navajo	31	19.64	8.50	1.52	2.184	1.05

TABLE XLI. PITCH FOR THE  
TENTH GRADE

Tribe	No.	Mean	S.D.	$\sigma_M$	$\sigma_{diff}$	$\frac{D}{\sigma_{diff}}$
Pueblo	31	54.14	12.54	2.25		
Navajo	31	57.66	12.33	2.21	3.162	1.11

TABLE XLII. INTENSITY FOR THE  
TENTH GRADE

Tribe	No.	Mean	S.D.	$\sigma_M$	$\sigma_{diff}$	$\frac{D}{\sigma_{diff}}$
Pueblo	31	60.72	18.25	3.27		
Navajo	31	55.24	14.74	2.64	4.219	1.30







TABLE XLIII. TIME FOR THE  
TENTH GRADE

Tribe	No.	Mean	S.D.	$\sigma_M$	$\sigma_{diff}$	$\frac{D}{\sigma_{diff}}$
Pueblo	31	68.08	12.61	2.26		
Navajo	31	69.04	12.53	2.25	3.193	.32

TABLE XLIV. RHYTHM FOR THE  
TENTH GRADE

Tribe	No.	Mean	S.D.	$\sigma_M$	$\sigma_{diff}$	$\frac{D}{\sigma_{diff}}$
Pueblo	31	33.51	5.67	1.02		
Navajo	31	29.90	6.57	1.18	1.588	2.31

Table XL indicates that the chances are 8,531 in 10,000 that the Pueblo is superior in tonal memory. In pitch discrimination (Table XLI) the chances are 8,665 in 10,000 that the Navajo is superior. The chances are 9,032 in 10,000 that the Pueblo is superior in intensity (Table XLII). The chances are (Table XLIII) 6,255 in 10,000 that the Navajo is superior in time discrimination. Table XLIV the chances are 9,896 in 10,000 that the Pueblo is superior in rhythm.







TABLE XLV. TONAL-MEMORY FOR THE  
ELEVENTH GRADE

Tribe	No.	Mean	S.D.	$\sigma M$	$\sigma \text{diff}$	$\frac{D}{\sigma \text{diff}}$
Pueblo	28	23.14	7.26	1.372		
Navajo	50	22.98	7.92	1.120	1.769	.092

TABLE XLVI. PITCH FOR THE  
ELEVENTH GRADE

Tribe	No.	Mean	S.D.	$\sigma M$	$\sigma \text{diff}$	$\frac{D}{\sigma \text{diff}}$
Pueblo	28	61.45	11.19	2.114		
Navajo	50	53.50	14.45	2.044	2.934	2.70

TABLE XLVII. INTENSITY FOR THE  
ELEVENTH GRADE

Tribe	No.	Mean	S.D.	$\sigma M$	$\sigma \text{diff}$	$\frac{D}{\sigma \text{diff}}$
Pueblo	28	61.92	10.92	2.063		
Navajo	50	62.60	18.67	2.641	3.338	.020



# TABLE 1. - SUMMARY OF DATA

Continued

STATION NO. 1			
Time	Temp	Wind	Wave
0800	68	1.5	1.5
1000	70	1.5	1.5

## STATION NO. 2

STATION NO. 2			
Time	Temp	Wind	Wave
0800	68	1.5	1.5
1000	70	1.5	1.5

## STATION NO. 3

STATION NO. 3			
Time	Temp	Wind	Wave
0800	68	1.5	1.5
1000	70	1.5	1.5



TABLE XLVIII. TIME FOR THE  
ELEVENTH GRADE

Tribe	No.	Mean	S.D.	$\sigma_M$	$\sigma_{diff}$	$\frac{D}{\sigma_{diff}}$
Pueblo	28	68.14	11.74	2.218		
Navajo	50	67.69	14.63	2.070	3.028	.01

TABLE XLXIX. RHYTHM FOR THE  
ELEVENTH GRADE

Tribe	No.	Mean	S.D.	$\sigma_M$	$\sigma_{diff}$	$\frac{D}{\sigma_{diff}}$
Pueblo	28	35.00	7.28	1.375		
Navajo	50	30.58	7.18	1.015	1.703	2.59

Table XLVIII indicates that the chances are 5,359 in 10,000 that the Pueblo is superior in tonal memory. In pitch discrimination (Table XLVI) the chances are 9,965 in 10,000 that the Pueblo is superior. The chances are (Table XLVII) 5,080 in 10,000 that the Navajo is superior in intensity. Table XLVIII indicates that the chances are 5,040 in 10,000 that the Pueblo is superior in time discrimination. Table XLXIX the chances are 9,952 in 10,000 that the Pueblo is superior in rhythm discrimination.



# CONFIDENTIAL

Time	Area	Count	Notes
10:00	101	10	
10:15	102	15	
10:30	103	20	
10:45	104	25	
11:00	105	30	
11:15	106	35	
11:30	107	40	
11:45	108	45	
12:00	109	50	
12:15	110	55	
12:30	111	60	
12:45	112	65	
13:00	113	70	
13:15	114	75	
13:30	115	80	
13:45	116	85	
14:00	117	90	
14:15	118	95	
14:30	119	100	
14:45	120	105	
15:00	121	110	
15:15	122	115	
15:30	123	120	
15:45	124	125	
16:00	125	130	
16:15	126	135	
16:30	127	140	
16:45	128	145	
17:00	129	150	
17:15	130	155	
17:30	131	160	
17:45	132	165	
18:00	133	170	
18:15	134	175	
18:30	135	180	
18:45	136	185	
19:00	137	190	
19:15	138	195	
19:30	139	200	
19:45	140	205	
20:00	141	210	
20:15	142	215	
20:30	143	220	
20:45	144	225	
21:00	145	230	
21:15	146	235	
21:30	147	240	
21:45	148	245	
22:00	149	250	
22:15	150	255	
22:30	151	260	
22:45	152	265	
23:00	153	270	
23:15	154	275	
23:30	155	280	
23:45	156	285	
24:00	157	290	
24:15	158	295	
24:30	159	300	
24:45	160	305	
25:00	161	310	
25:15	162	315	
25:30	163	320	
25:45	164	325	
26:00	165	330	
26:15	166	335	
26:30	167	340	
26:45	168	345	
27:00	169	350	
27:15	170	355	
27:30	171	360	
27:45	172	365	
28:00	173	370	
28:15	174	375	
28:30	175	380	
28:45	176	385	
29:00	177	390	
29:15	178	395	
29:30	179	400	
29:45	180	405	
30:00	181	410	
30:15	182	415	
30:30	183	420	
30:45	184	425	
31:00	185	430	
31:15	186	435	
31:30	187	440	
31:45	188	445	
32:00	189	450	
32:15	190	455	
32:30	191	460	
32:45	192	465	
33:00	193	470	
33:15	194	475	
33:30	195	480	
33:45	196	485	
34:00	197	490	
34:15	198	495	
34:30	199	500	
34:45	200	505	
35:00	201	510	
35:15	202	515	
35:30	203	520	
35:45	204	525	
36:00	205	530	
36:15	206	535	
36:30	207	540	
36:45	208	545	
37:00	209	550	
37:15	210	555	
37:30	211	560	
37:45	212	565	
38:00	213	570	
38:15	214	575	
38:30	215	580	
38:45	216	585	
39:00	217	590	
39:15	218	595	
39:30	219	600	
39:45	220	605	
40:00	221	610	
40:15	222	615	
40:30	223	620	
40:45	224	625	
41:00	225	630	
41:15	226	635	
41:30	227	640	
41:45	228	645	
42:00	229	650	
42:15	230	655	
42:30	231	660	
42:45	232	665	
43:00	233	670	
43:15	234	675	
43:30	235	680	
43:45	236	685	
44:00	237	690	
44:15	238	695	
44:30	239	700	
44:45	240	705	
45:00	241	710	
45:15	242	715	
45:30	243	720	
45:45	244	725	
46:00	245	730	
46:15	246	735	
46:30	247	740	
46:45	248	745	
47:00	249	750	
47:15	250	755	
47:30	251	760	
47:45	252	765	
48:00	253	770	
48:15	254	775	
48:30	255	780	
48:45	256	785	
49:00	257	790	
49:15	258	795	
49:30	259	800	
49:45	260	805	
50:00	261	810	
50:15	262	815	
50:30	263	820	
50:45	264	825	
51:00	265	830	
51:15	266	835	
51:30	267	840	
51:45	268	845	
52:00	269	850	
52:15	270	855	
52:30	271	860	
52:45	272	865	
53:00	273	870	
53:15	274	875	
53:30	275	880	
53:45	276	885	
54:00	277	890	
54:15	278	895	
54:30	279	900	
54:45	280	905	
55:00	281	910	
55:15	282	915	
55:30	283	920	
55:45	284	925	
56:00	285	930	
56:15	286	935	
56:30	287	940	
56:45	288	945	
57:00	289	950	
57:15	290	955	
57:30	291	960	
57:45	292	965	
58:00	293	970	
58:15	294	975	
58:30	295	980	
58:45	296	985	
59:00	297	990	
59:15	298	995	
59:30	299	1000	
59:45	300	1005	
60:00	301	1010	
60:15	302	1015	
60:30	303	1020	
60:45	304	1025	
61:00	305	1030	
61:15	306	1035	
61:30	307	1040	
61:45	308	1045	
62:00	309	1050	
62:15	310	1055	
62:30	311	1060	
62:45	312	1065	
63:00	313	1070	
63:15	314	1075	
63:30	315	1080	
63:45	316	1085	
64:00	317	1090	
64:15	318	1095	
64:30	319	1100	
64:45	320	1105	
65:00	321	1110	
65:15	322	1115	
65:30	323	1120	
65:45	324	1125	
66:00	325	1130	
66:15	326	1135	
66:30	327	1140	
66:45	328	1145	
67:00	329	1150	
67:15	330	1155	
67:30	331	1160	
67:45	332	1165	
68:00	333	1170	
68:15	334	1175	
68:30	335	1180	
68:45	336	1185	
69:00	337	1190	
69:15	338	1195	
69:30	339	1200	
69:45	340	1205	
70:00	341	1210	
70:15	342	1215	
70:30	343	1220	
70:45	344	1225	
71:00	345	1230	
71:15	346	1235	
71:30	347	1240	
71:45	348	1245	
72:00	349	1250	
72:15	350	1255	
72:30	351	1260	
72:45	352	1265	
73:00	353	1270	
73:15	354	1275	
73:30	355	1280	
73:45	356	1285	
74:00	357	1290	
74:15	358	1295	
74:30	359	1300	
74:45	360	1305	
75:00	361	1310	
75:15	362	1315	
75:30	363	1320	
75:45	364	1325	
76:00	365	1330	
76:15	366	1335	
76:30	367	1340	
76:45	368	1345	
77:00	369	1350	
77:15	370	1355	
77:30	371	1360	
77:45	372	1365	
78:00	373	1370	
78:15	374	1375	
78:30	375	1380	
78:45	376	1385	
79:00	377	1390	
79:15	378	1395	
79:30	379	1400	
79:45	380	1405	
80:00	381	1410	
80:15	382	1415	
80:30	383	1420	
80:45	384	1425	
81:00	385	1430	
81:15	386	1435	
81:30	387	1440	
81:45	388	1445	
82:00	389	1450	
82:15	390	1455	
82:30	391	1460	
82:45	392	1465	
83:00	393	1470	
83:15	394	1475	
83:30	395	1480	
83:45	396	1485	
84:00	397	1490	
84:15	398	1495	
84:30	399	1500	
84:45	400	1505	
85:00	401	1510	
85:15	402	1515	
85:30	403	1520	
85:45	404	1525	
86:00	405	1530	
86:15	406	1535	
86:30	407	1540	
86:45	408	1545	
87:00	409	1550	
87:15	410	1555	
87:30	411	1560	
87:45	412	1565	
88:00	413	1570	
88:15	414	1575	
88:30	415	1580	
88:45	416	1585	
89:00	417	1590	
89:15	418	1595	
89:30	419	1600	
89:45	420	1605	
90:00	421	1610	
90:15	422	1615	
90:30	423	1620	
90:45	424	1625	
91:00	425	1630	
91:15	426	1635	
91:30	427	1640	
91:45	428	1645	
92:00	429	1650	
92:15	430	1655	
92:30	431	1660	
92:45	432	1665	
93:00	433	1670	
93:15	434	1675	
93:30	435	1680	
93:45	436	1685	
94:00	437	1690	
94:15	438		



TABLE L. TONAL-MEMORY FOR THE  
TWELFTH GRADE

Tribe	No.	Mean	S.D.	$\sigma_M$	$\sigma_{diff}$	$\frac{D}{\sigma_{diff}}$
Pueblo	24	21.83	7.49	1.530		
Navajo	32	20.87	6.20	1.096	1.881	.51

TABLE LI. PITCH FOR THE  
TWELFTH GRADE

Tribe	No.	Mean	S.D.	$\sigma_M$	$\sigma_{diff}$	$\frac{D}{\sigma_{diff}}$
Pueblo	24	55.50	10.35	2.113		
Navajo	32	53.71	12.27	2.172	3.026	.58

TABLE LII. INTENSITY FOR THE  
TWELFTH GRADE

Tribe	No.	Mean	S.D.	$\sigma_M$	$\sigma_{diff}$	$\frac{D}{\sigma_{diff}}$
Pueblo	24	63.84	17.40	3.551		
Navajo	32	64.06	16.57	2.915	4.585	.04



# COMPANIES

TABLE 1. - 1924-1925

TABLE 1. - 1924-1925

Line	No.	Year	1924	1925
1	1	1924	1.00	1.00
2	2	1925	1.00	1.00

TABLE 1. - 1924-1925

TABLE 1. - 1924-1925

Line	No.	Year	1924	1925
1	1	1924	1.00	1.00
2	2	1925	1.00	1.00

TABLE 1. - 1924-1925

TABLE 1. - 1924-1925

Line	No.	Year	1924	1925
1	1	1924	1.00	1.00
2	2	1925	1.00	1.00



TABLE LIII. TIME FOR THE  
TWELFTH GRADE

Tribe	No.	Mean	S.D.	$\sigma_M$	$\sigma_{diff}$	$\frac{D}{\sigma_{diff}}$
Pueblo	24	69.62	11.12	2.27		
Navajo	32	69.09	10.53	1.86	2.934	.01

TABLE LIV. RHYTHM FOR THE  
TWELFTH GRADE

Tribe	No.	Mean	S.D.	$\sigma_M$	$\sigma_{diff}$	$\frac{D}{\sigma_{diff}}$
Pueblo	24	34.14	4.80	.981		
Navajo	32	31.00	5.11	.903	1.333	2.35

Table I indicates that the chances are 6,950 in 10,000 that the Pueblo is superior in tonal memory. In pitch discrimination (Table LI) the chances are 7,190 in 10,000 that the Pueblo is superior. The chances are (Table LII) 5,160 in 10,000 that the Navajo is superior in intensity. The chances are (Table LIII) 5,040 in 10,000 that the Pueblo is superior in time discrimination. Table LIV the chances are 9,906 in 10,000 that the Pueblo is superior in rhythm.







TABLE LV. COMPARISON OF GIRLS IN  
TONAL-MEMORY

Tribe	No.	Mean	S.D.	$\sigma_M$	$\sigma_{diff}$	$\frac{D}{\sigma_{diff}}$
Pueblo	164	19.92	6.62	.673		
Navajo	135	18.59	6.89	.593	.894	1.48

TABLE LVI. COMPARISON OF GIRLS IN  
PITCH

Tribe	No.	Mean	S.D.	$\sigma_M$	$\sigma_{diff}$	$\frac{D}{\sigma_{diff}}$
Pueblo	164	53.17	12.73	.909		
Navajo	135	53.51	12.51	1.076	1.403	.24

TABLE LVII. COMPARISON OF GIRLS IN  
INTENSITY

Tribe	No.	Mean	S.D.	$\sigma_M$	$\sigma_{diff}$	$\frac{D}{\sigma_{diff}}$
Pueblo	164	59.60	15.27	1.113		
Navajo	135	58.12	14.07	1.211	1.64	.89



Price			
100	100	100	100
100	100	100	100
100	100	100	100

Price			
100	100	100	100
100	100	100	100
100	100	100	100

Price			
100	100	100	100
100	100	100	100
100	100	100	100



TABLE LVIII. COMPARISON OF GIRLS IN  
TIME

Tribe	No.	Mean	S.D.	$\sigma_M$	$\sigma_{diff}$	$\frac{D}{\sigma_{diff}}$
Pueblo	164	62.19	12.44	.971		
Navajo	135	60.68	11.30	1.00	1.396	1.08

TABLE LXIX. COMPARISON OF GIRLS IN  
RHYTHM

Tribe	No.	Mean	S.D.	$\sigma_M$	$\sigma_{diff}$	$\frac{D}{\sigma_{diff}}$
Pueblo	164	32.34	5.49	.429		
Navajo	135	29.29	6.51	.560	.707	4.30

Table LV indicates that the chances are 9,306 in 10,000 that the Pueblo girls are superior in tonal memory. In pitch discrimination (Table LVI) the chances are 5,948 in 10,000 that the Navajo girls are superior. The chances are 8,133 in 10,000 that the Pueblo girls are superior in intensity (Table LVII). In time discrimination (Table LVIII) the chances are 8,599 in 10,000 that the Pueblo girls are superior. Table LXIX the chances are 9,999 in 10,000 that the Pueblo girls are superior in rhythm.



THE NEW YORK PUBLIC LIBRARY

ASTEN LENOX TILDEN FOUNDATION

THE NEW YORK PUBLIC LIBRARY

ASTEN LENOX TILDEN FOUNDATION

THE NEW YORK PUBLIC LIBRARY

ASTEN LENOX TILDEN FOUNDATION

THE NEW YORK PUBLIC LIBRARY

ASTEN LENOX TILDEN FOUNDATION

THE NEW YORK PUBLIC LIBRARY

ASTEN LENOX TILDEN FOUNDATION

THE NEW YORK PUBLIC LIBRARY

ASTEN LENOX TILDEN FOUNDATION

THE NEW YORK PUBLIC LIBRARY

ASTEN LENOX TILDEN FOUNDATION

THE NEW YORK PUBLIC LIBRARY

ASTEN LENOX TILDEN FOUNDATION

THE NEW YORK PUBLIC LIBRARY

ASTEN LENOX TILDEN FOUNDATION

THE NEW YORK PUBLIC LIBRARY

ASTEN LENOX TILDEN FOUNDATION

THE NEW YORK PUBLIC LIBRARY

ASTEN LENOX TILDEN FOUNDATION



TABLE LX. COMPARISON OF BOYS IN  
TONAL-MEMORY

Tribe	No.	Mean	S.D.	$\sigma_M$	$\sigma_{diff}$	$\frac{D}{\sigma_{diff}}$
Pueblo	155	19.94	7.06	.567		
Navajo	182	18.89	4.21	.311	.646	1.63

TABLE LXI. COMPARISON OF BOYS IN  
PITCH

Tribe	No.	Mean	S.D.	$\sigma_M$	$\sigma_{diff}$	$\frac{D}{\sigma_{diff}}$
Pueblo	155	52.98	11.97	.962		
Navajo	182	56.78	13.15	.975	1.368	2.72

TABLE LXII. COMPARISON OF BOYS IN  
INTENSITY

Tribe	No.	Mean	S.D.	$\sigma_M$	$\sigma_{diff}$	$\frac{D}{\sigma_{diff}}$
Pueblo	155	62.15	15.65	1.257		
Navajo	182	60.35	16.58	1.229	1.760	1.02



# THE JOURNAL OF THE

AMERICAN MEDICAL ASSOCIATION

Time	No.	Page	Author
12:00	100	101	102
1:00	103	104	105
2:00	106	107	108
3:00	109	110	111
4:00	112	113	114
5:00	115	116	117
6:00	118	119	120
7:00	121	122	123
8:00	124	125	126
9:00	127	128	129
10:00	130	131	132
11:00	133	134	135
12:00	136	137	138
1:00	139	140	141
2:00	142	143	144
3:00	145	146	147
4:00	148	149	150
5:00	151	152	153
6:00	154	155	156
7:00	157	158	159
8:00	160	161	162
9:00	163	164	165
10:00	166	167	168
11:00	169	170	171
12:00	172	173	174
1:00	175	176	177
2:00	178	179	180
3:00	181	182	183
4:00	184	185	186
5:00	187	188	189
6:00	190	191	192
7:00	193	194	195
8:00	196	197	198
9:00	199	200	201
10:00	202	203	204
11:00	205	206	207
12:00	208	209	210
1:00	211	212	213
2:00	214	215	216
3:00	217	218	219
4:00	220	221	222
5:00	223	224	225
6:00	226	227	228
7:00	229	230	231
8:00	232	233	234
9:00	235	236	237
10:00	238	239	240
11:00	241	242	243
12:00	244	245	246
1:00	247	248	249
2:00	250	251	252
3:00	253	254	255
4:00	256	257	258
5:00	259	260	261
6:00	262	263	264
7:00	265	266	267
8:00	268	269	270
9:00	271	272	273
10:00	274	275	276
11:00	277	278	279
12:00	280	281	282
1:00	283	284	285
2:00	286	287	288
3:00	289	290	291
4:00	292	293	294
5:00	295	296	297
6:00	298	299	300
7:00	301	302	303
8:00	304	305	306
9:00	307	308	309
10:00	310	311	312
11:00	313	314	315
12:00	316	317	318
1:00	319	320	321
2:00	322	323	324
3:00	325	326	327
4:00	328	329	330
5:00	331	332	333
6:00	334	335	336
7:00	337	338	339
8:00	340	341	342
9:00	343	344	345
10:00	346	347	348
11:00	349	350	351
12:00	352	353	354
1:00	355	356	357
2:00	358	359	360
3:00	361	362	363
4:00	364	365	366
5:00	367	368	369
6:00	370	371	372
7:00	373	374	375
8:00	376	377	378
9:00	379	380	381
10:00	382	383	384
11:00	385	386	387
12:00	388	389	390
1:00	391	392	393
2:00	394	395	396
3:00	397	398	399
4:00	400	401	402
5:00	403	404	405
6:00	406	407	408
7:00	409	410	411
8:00	412	413	414
9:00	415	416	417
10:00	418	419	420
11:00	421	422	423
12:00	424	425	426
1:00	427	428	429
2:00	430	431	432
3:00	433	434	435
4:00	436	437	438
5:00	439	440	441
6:00	442	443	444
7:00	445	446	447
8:00	448	449	450
9:00	451	452	453
10:00	454	455	456
11:00	457	458	459
12:00	460	461	462
1:00	463	464	465
2:00	466	467	468
3:00	469	470	471
4:00	472	473	474
5:00	475	476	477
6:00	478	479	480
7:00	481	482	483
8:00	484	485	486
9:00	487	488	489
10:00	490	491	492
11:00	493	494	495
12:00	496	497	498
1:00	499	500	501
2:00	502	503	504
3:00	505	506	507
4:00	508	509	510
5:00	511	512	513
6:00	514	515	516
7:00	517	518	519
8:00	520	521	522
9:00	523	524	525
10:00	526	527	528
11:00	529	530	531
12:00	532	533	534
1:00	535	536	537
2:00	538	539	540
3:00	541	542	543
4:00	544	545	546
5:00	547	548	549
6:00	550	551	552
7:00	553	554	555
8:00	556	557	558
9:00	559	560	561
10:00	562	563	564
11:00	565	566	567
12:00	568	569	570
1:00	571	572	573
2:00	574	575	576
3:00	577	578	579
4:00	580	581	582
5:00	583	584	585
6:00	586	587	588
7:00	589	590	591
8:00	592	593	594
9:00	595	596	597
10:00	598	599	600
11:00	601	602	603
12:00	604	605	606
1:00	607	608	609
2:00	610	611	612
3:00	613	614	615
4:00	616	617	618
5:00	619	620	621
6:00	622	623	624
7:00	625	626	627
8:00	628	629	630
9:00	631	632	633
10:00	634	635	636
11:00	637	638	639
12:00	640	641	642
1:00	643	644	645
2:00	646	647	648
3:00	649	650	651
4:00	652	653	654
5:00	655	656	657
6:00	658	659	660
7:00	661	662	663
8:00	664	665	666
9:00	667	668	669
10:00	670	671	672
11:00	673	674	675
12:00	676	677	678
1:00	679	680	681
2:00	682	683	684
3:00	685	686	687
4:00	688	689	690
5:00	691	692	693
6:00	694	695	696
7:00	697	698	699
8:00	700	701	702
9:00	703	704	705
10:00	706	707	708
11:00	709	710	711
12:00	712	713	714
1:00	715	716	717
2:00	718	719	720
3:00	721	722	723
4:00	724	725	726
5:00	727	728	729
6:00	730	731	732
7:00	733	734	735
8:00	736	737	738
9:00	739	740	741
10:00	742	743	744
11:00	745	746	747
12:00	748	749	750
1:00	751	752	753
2:00	754	755	756
3:00	757	758	759
4:00	760	761	762
5:00	763	764	765
6:00	766	767	768
7:00	769	770	771
8:00	772	773	774
9:00	775	776	777
10:00	778	779	780
11:00	781	782	783
12:00	784	785	786
1:00	787	788	789
2:00	790	791	792
3:00	793	794	795
4:00	796	797	798
5:00	799	800	801
6:00	802	803	804
7:00	805	806	807
8:00	808	809	810
9:00	811	812	813
10:00	814	815	816
11:00	817	818	819
12:00	820	821	822
1:00	823	824	825
2:00	826	827	828
3:00	829	830	831
4:00	832	833	834
5:00	835	836	837
6:00	838	839	840
7:00	841	842	843
8:00	844	845	846
9:00	847	848	849
10:00	850	851	852
11:00	853	854	855
12:00	856	857	858
1:00	859	860	861
2:00	862	863	864
3:00	865	866	867
4:00	868	869	870
5:00	871	872	873
6:00	874	875	876
7:00	877	878	879
8:00	880	881	882
9:00	883	884	885
10:00	886	887	888
11:00	889	890	891
12:00	892	893	894
1:00	895	896	897
2:00	898	899	900
3:00	901	902	903
4:00	904	905	906
5:00	907	908	909
6:00	910	911	912
7:00	913	914	915
8:00	916	917	918
9:00	919	920	921
10:00	922	923	924
11:00	925	926	927
12:00	928	929	930
1:00	931	932	933
2:00	934	935	936
3:00	937	938	939
4:00	940	941	942
5:00	943	944	945
6:00	946	947	948
7:00	949	950	951
8:00	952	953	954
9:00	955	956	957
10:00	958	959	960
11:00	961	962	963
12:00	964	965	966
1:00	967	968	969
2:00	970	971	972
3:00	973	974	975
4:00	976	977	978
5:00	979	980	981
6:00	982	983	984
7:00	985	986	987
8:00	988	989	990
9:00	991	992	993
10:00	994	995	996
11:00	997	998	999
12:00	1000	1001	1002

# THE JOURNAL OF THE

AMERICAN MEDICAL ASSOCIATION

Time	No.	Page	Author
12:00	100	101	102
1:00	103	104	105
2:00	106	107	108
3:00	109	110	111
4:00	112	113	114
5:00	115	116	117



TABLE LXIII. COMPARISON OF BOYS IN  
TIME

Tribes	No.	Mean	S.D.	$\sigma M$	$\sigma \text{diff}$	$\frac{D}{\sigma \text{diff}}$
Pueblo	155	65.88	13.04	1.048		
Navajo	182	68.54	11.800	.874	1.360	1.95

TABLE LXIV. COMPARISON OF BOYS IN  
RHYTHM

Tribes	No.	Mean	S.D.	$\sigma M$	$\sigma \text{diff}$	$\frac{D}{\sigma \text{diff}}$
Pueblo	155	33.67	5.48	.440		
Navajo	182	32.04	5.45	.406	.598	2.71

Table LX indicates that the chances are 9,484 in 10,000 that the Pueblo boys are superior in tonal memory. In pitch discrimination (Table LXI) the chances are 9,967 in 10,000 that the Navajo boys are superior. Table LXII the chances are 8,461 in 10,000 that the Pueblo boys are superior in intensity. Table LXIII the chances are 9,744 in 10,000 that the Navajo boys are superior. The chances are (Table LXIV) 9,966 in 10,000 that the Pueblo boys are superior in rhythm.







TABLE LXV. COMPARISON IN TONAL MEMORY  
OF PUEBLO BOYS AND PUEBLO GIRLS

Pueblo	No.	Mean	S.D.	$\sigma_M$	$\sigma_{diff}$	$\frac{D}{\sigma_{diff}}$
Boys	155	19.94	7.06	.567		
Girls	164	19.92	8.62	.673	.877	.022

TABLE LXVI. COMPARISON IN PITCH OF  
PUEBLO BOYS AND PUEBLO GIRLS

Pueblo	No.	Mean	S.D.	$\sigma_M$	$\sigma_{diff}$	$\frac{D}{\sigma_{diff}}$
Boys	155	52.98	11.97	.962		
Girls	164	53.17	12.73	.909	1.322	.14

TABLE LXVII. COMPARISON IN INTENSITY  
OF PUEBLO BOYS AND PUEBLO GIRLS

Pueblo	No.	Mean	S.D.	$\sigma_M$	$\sigma_{diff}$	$\frac{D}{\sigma_{diff}}$
Boys	155	62.15	15.65	1.257		
Girls	164	59.60	15.27	1.113	1.679	1.52







TABLE LXVIII. COMPARISON IN TIME OF  
PUEBLO BOYS AND PUEBLO GIRLS

Pueblo	No.	Mean	S.D.	$\sigma_M$	$\sigma_{diff}$	$\frac{D}{\sigma_{diff}}$
Boys	155	65.88	13.04	1.048		
Girls	164	62.19	12.44	.971	1.43	2.59

TABLE LXXIX. COMPARISON IN RHYTHM OF  
PUEBLO BOYS AND PUEBLO GIRLS

Pueblo	No.	Mean	S.D.	$\sigma_M$	$\sigma_{diff}$	$\frac{D}{\sigma_{diff}}$
Boys	155	33.67	5.48	.440		
Girls	164	32.34	5.49	4.29	.616	2.15

Table LXV indicates that the chances are 5,080 in 10,000 that the Pueblo boys are superior in tonal memory. In pitch discrimination (Table LXVI) the chances are 5,557 in 10,000 that the Pueblo girls are superior. The chances are (Table LXVII) 9,357 in 10,000 that the Pueblo boys are superior in intensity. Table LXVIII the chances are 9,950 in 10,000 that the Pueblo boys are superior in time. Rhythm discrimination (Table LXXIX) the chances are 9,842 in 10,000 that the boys are superior.







TABLE LXX. COMPARISON IN TONAL MEMORY  
OF NAVAJO BOYS AND NAVAJO GIRLS

Navajo	No.	Mean	S.D.	$\sigma_M$	$\sigma_{diff}$	$\frac{D}{\sigma_{diff}}$
Boys	182	18.89	4.21	.311		
Girls	135	18.59	6.89	.593	.670	.45

TABLE LXXI. COMPARISON IN PITCH OF  
NAVAJO BOYS AND NAVAJO GIRLS

Navajo	No.	Mean	S.D.	$\sigma_M$	$\sigma_{diff}$	$\frac{D}{\sigma_{diff}}$
Boys	182	56.78	13.15	.975		
Girls	135	53.51	12.51	1.076	1.445	2.26

TABLE LXXII. COMPARISON IN INTENSITY  
OF NAVAJO BOYS AND NAVAJO GIRLS

Navajo	No.	Mean	S.D.	$\sigma_M$	$\sigma_{diff}$	$\frac{D}{\sigma_{diff}}$
Boys	182	60.35	16.58	1.229		
Girls	135	58.12	14.07	1.211	1.72	1.29



THEORY OF THE EARTH

CHAPTER I. OF THE ORIGIN OF THE EARTH.

Page	1	2	3	4	5	6	7	8	9	10	11	12	13	14	15	16	17	18	19	20	21	22	23	24	25	26	27	28	29	30	31	32	33	34	35	36	37	38	39	40	41	42	43	44	45	46	47	48	49	50	51	52	53	54	55	56	57	58	59	60	61	62	63	64	65	66	67	68	69	70	71	72	73	74	75	76	77	78	79	80	81	82	83	84	85	86	87	88	89	90	91	92	93	94	95	96	97	98	99	100
------	---	---	---	---	---	---	---	---	---	----	----	----	----	----	----	----	----	----	----	----	----	----	----	----	----	----	----	----	----	----	----	----	----	----	----	----	----	----	----	----	----	----	----	----	----	----	----	----	----	----	----	----	----	----	----	----	----	----	----	----	----	----	----	----	----	----	----	----	----	----	----	----	----	----	----	----	----	----	----	----	----	----	----	----	----	----	----	----	----	----	----	----	----	----	----	----	----	----	----	-----

Page	1	2	3	4	5	6	7	8	9	10	11	12	13	14	15	16	17	18	19	20	21	22	23	24	25	26	27	28	29	30	31	32	33	34	35	36	37	38	39	40	41	42	43	44	45	46	47	48	49	50	51	52	53	54	55	56	57	58	59	60	61	62	63	64	65	66	67	68	69	70	71	72	73	74	75	76	77	78	79	80	81	82	83	84	85	86	87	88	89	90	91	92	93	94	95	96	97	98	99	100
------	---	---	---	---	---	---	---	---	---	----	----	----	----	----	----	----	----	----	----	----	----	----	----	----	----	----	----	----	----	----	----	----	----	----	----	----	----	----	----	----	----	----	----	----	----	----	----	----	----	----	----	----	----	----	----	----	----	----	----	----	----	----	----	----	----	----	----	----	----	----	----	----	----	----	----	----	----	----	----	----	----	----	----	----	----	----	----	----	----	----	----	----	----	----	----	----	----	----	----	-----

Page	1	2	3	4	5	6	7	8	9	10	11	12	13	14	15	16	17	18	19	20	21	22	23	24	25	26	27	28	29	30	31	32	33	34	35	36	37	38	39	40	41	42	43	44	45	46	47	48	49	50	51	52	53	54	55	56	57	58	59	60	61	62	63	64	65	66	67	68	69	70	71	72	73	74	75	76	77	78	79	80	81	82	83	84	85	86	87	88	89	90	91	92	93	94	95	96	97	98	99	100
------	---	---	---	---	---	---	---	---	---	----	----	----	----	----	----	----	----	----	----	----	----	----	----	----	----	----	----	----	----	----	----	----	----	----	----	----	----	----	----	----	----	----	----	----	----	----	----	----	----	----	----	----	----	----	----	----	----	----	----	----	----	----	----	----	----	----	----	----	----	----	----	----	----	----	----	----	----	----	----	----	----	----	----	----	----	----	----	----	----	----	----	----	----	----	----	----	----	----	----	-----



TABLE LXXIII. COMPARISON IN TIME OF  
NAVAJO BOYS AND NAVAJO GIRLS

Navajo	No.	Mean	S.D.	$\sigma_M$	$\sigma_{diff}$	$\frac{D}{\sigma_{diff}}$
Boys	182	68.54	11.800	.874		
Girls	135	60.68	11.30	1.00	1.326	5.92

TABLE LXXIV. COMPARISON IN RHYTHM OF  
NAVAJO BOYS AND NAVAJO GIRLS

Navajo	No.	Mean	S.D.	$\sigma_M$	$\sigma_{diff}$	$\frac{D}{\sigma_{diff}}$
Boys	182	32.04	5.45	.406		
Girls	135	29.29	6.51	.560	.692	3.97

Table LXX indicates that the chances are 6,736 in 10,000 that the Navajo boys are superior in tonal memory. In pitch discrimination (Table LXXI) the chances are 9,893 in 10,000 that the Navajo boys are superior. The chances are 9,015 in 10,000 that the Navajo boys are superior in intensity (Table LXXII). In time discrimination (Table LXXIII) the chances are 9,999 in 10,000 that the Navajo boys are superior. Table LXXIV the chances are 9,999 in 10,000 that the Navajo boys are superior in rhythm.

In all five traits the Navajo boys are superior to the Navajo girls.



THE UNITED STATES OF AMERICA  
DEPARTMENT OF THE INTERIOR  
BUREAU OF LAND MANAGEMENT

REPORT OF THE  
SPECIAL AGENT IN CHARGE  
OF THE  
LAND OFFICE  
AT  
DENVER, COLORADO  
FOR THE YEAR  
1900

THE LAND OFFICE  
AT  
DENVER, COLORADO  
FOR THE YEAR  
1900

REPORT OF THE  
SPECIAL AGENT IN CHARGE  
OF THE  
LAND OFFICE  
AT  
DENVER, COLORADO  
FOR THE YEAR  
1900

THE LAND OFFICE  
AT  
DENVER, COLORADO  
FOR THE YEAR  
1900

THE LAND OFFICE  
AT  
DENVER, COLORADO  
FOR THE YEAR  
1900



TABLE LXXV. COMPARISON IN TONAL MEMORY  
OF PUEBLO BOYS AND NAVAJO GIRLS

Tribes	No.	Mean	S.D.	$\sigma_M$	$\sigma_{diff}$	$\frac{D}{\sigma_{diff}}$
Pueblo Boys	155	19.94	7.06	.567		
Navajo Girls	135	18.59	6.89	.593	.818	1.65

TABLE LXXVI. COMPARISON IN PITCH OF  
PUEBLO BOYS AND NAVAJO GIRLS

Tribes	No.	Mean	S.D.	$\sigma_M$	$\sigma_{diff}$	$\frac{D}{\sigma_{diff}}$
Pueblo Boys	155	52.98	11.97	.962		
Navajo Girls	135	53.51	12.51	1.076	1.145	.38

TABLE LXXVII. COMPARISON IN INTENSITY OF  
PUEBLO BOYS AND NAVAJO GIRLS

Tribes	No.	Mean	S.D.	$\sigma_M$	$\sigma_{diff}$	$\frac{D}{\sigma_{diff}}$
Pueblo Boys	155	62.15	15.65	1.257		
Navajo Girls	135	58.12	14.07	1.211	1.746	2.308



TABLE 1. Summary of the results of the survey of the  
fish and shellfish resources of the coastal waters of the State of California.

Fishes		Shellfish	
Species	Abundance	Species	Abundance
Salmon	100	Oysters	50
Shrimp	200	Clams	30
Crabs	150	Mussels	20
Sea urchins	10	Scallops	10

TABLE 2. Summary of the results of the survey of the  
fish and shellfish resources of the coastal waters of the State of California.

Fishes		Shellfish	
Species	Abundance	Species	Abundance
Salmon	100	Oysters	50
Shrimp	200	Clams	30
Crabs	150	Mussels	20
Sea urchins	10	Scallops	10

TABLE 3. Summary of the results of the survey of the  
fish and shellfish resources of the coastal waters of the State of California.

Fishes		Shellfish	
Species	Abundance	Species	Abundance
Salmon	100	Oysters	50
Shrimp	200	Clams	30
Crabs	150	Mussels	20
Sea urchins	10	Scallops	10



TABLE LXXVIII. COMPARISON IN TIME OF  
PUEBLO BOYS AND NAVAJO GIRLS

Tribe	No.	Mean	S.D.	$\sigma_M$	$\sigma_{diff}$	$\frac{D}{\sigma_{diff}}$
Pueblo Boys	155	65.88	13.04	1.048		
Navajo Girls	135	60.68	11.30	1.00	1.449	3.58

TABLE LXXIX. COMPARISON IN RHYTHM OF  
PUEBLO BOYS AND NAVAJO GIRLS

Tribe	No.	Mean	S.D.	$\sigma_M$	$\sigma_{diff}$	$\frac{D}{\sigma_{diff}}$
Pueblo Boys	155	33.67	5.48	.440		
Navajo Girls	135	29.29	6.51	.560	.714	6.13

Table LXXV indicates the chances are 9,500 in 10,000 that the Pueblo boys are superior in tonal memory. In pitch discrimination (Table LXXVI) the chances are 6,406 in 10,000 that the Navajo girls are superior. The chances are 9,893 in 10,000 (Table LXXVII) that the Pueblo boys are superior. Table LXXVIII the chances are 9,998 in 10,000 that the Pueblo boys are superior in time. In rhythm discrimination (Table LXXIX) the chances are 9,999 in 10,000 that the Pueblo boys are superior.

In all traits but pitch the Pueblo boys are superior to the Navajo girls.



TABLE 1. - *Continued*

Area		1950		1951	
Population		Total		Total	
...	...	...	...	...	...
...	...	...	...	...	...

TABLE 2. - *Continued*

Area		1950		1951	
Population		Total		Total	
...	...	...	...	...	...
...	...	...	...	...	...

TABLE 3. - *Continued*

The following table shows the population of the various areas in the United States in 1950 and 1951. The population of the United States in 1950 was 150,000,000 and in 1951 it was 152,000,000. The population of the various areas in the United States in 1950 and 1951 is shown in the following table.

TABLE 4. - *Continued*



TABLE LXXX. COMPARISON IN TONAL MEMORY OF  
PUEBLO GIRLS AND NAVAJO BOYS

Tribes	No.	Mean	S.D.	$\sigma_M$	$\sigma_{diff}$	$\frac{D}{\sigma_{diff}}$
Pueblo Girls	164	19.92	8.62	.673		
Navajo Boys	182	18.89	4.21	.311	.7416	1.52

TABLE LXXXI. COMPARISON IN PITCH OF  
PUEBLO GIRLS AND NAVAJO BOYS

Tribes	No.	Mean	S.D.	$\sigma_M$	$\sigma_{diff}$	$\frac{D}{\sigma_{diff}}$
Pueblo Girls	164	53.17	12.73	.909		
Navajo Boys	182	56.78	13.15	.975	1.777	2.03

TABLE LXXXII. COMPARISON IN INTENSITY  
OF PUEBLO GIRLS AND NAVAJO BOYS

Tribes	No.	Mean	S.D.	$\sigma_M$	$\sigma_{diff}$	$\frac{D}{\sigma_{diff}}$
Pueblo Girls	164	59.60	15.27	1.113		
Navajo Boys	182	60.35	16.58	1.229	1.655	.45



THE UNIVERSITY OF CHICAGO  
LIBRARY

Title		No.		Date	
The University of Chicago		100		1900	
The University of Chicago		101		1901	

THE UNIVERSITY OF CHICAGO  
LIBRARY

Title		No.		Date	
The University of Chicago		102		1902	
The University of Chicago		103		1903	

THE UNIVERSITY OF CHICAGO  
LIBRARY

Title		No.		Date	
The University of Chicago		104		1904	
The University of Chicago		105		1905	

THE UNIVERSITY OF CHICAGO  
LIBRARY



TABLE LXXXIII. COMPARISON IN TIME OF  
PUEBLO GIRLS AND NAVAJO BOYS

Tribe	No.	Mean	S.D.	$\sigma$ M	$\sigma$ diff	$\frac{D}{\sigma \text{ diff}}$
Pueblo Girls	164	62.19	12.44	.971		
Navajo Boys	182	68.54	11.80	.874	1.305	4.86

TABLE LXXXIV. COMPARISON IN RHYTHM OF  
PUEBLO GIRLS AND NAVAJO BOYS

Tribe	No.	Mean	S.D.	$\sigma$ M	$\sigma$ diff	$\frac{D}{\sigma \text{ diff}}$
Pueblo Girls	164	32.34	5.49	.429		
Navajo Boys	182	32.04	5.45	.406	.591	.50

Table LXXX indicates that the chances are 9,357 in 10,000 that the Pueblo girls are superior in tonal memory. In pitch discrimination (Table LXXXI) the chances are 9,788 in 10,000 that the Navajo boys are superior. The chances are (Table LXXXII) 6,736 in 10,000 that the Navajo boys are superior in intensity. Table LXXXIII the chances are 9,999 in 10,000 that the Navajo boys are superior in time. The chances are (Table LXXXIV) 6,900 in 10,000 that the Pueblo girls are superior in rhythm.



TABLE I	
Summary of the results of the investigation	
Time	1934
Location	...
Method	...
Results	...

TABLE II	
Summary of the results of the investigation	
Time	1935
Location	...
Method	...
Results	...

TABLE III

Summary of the results of the investigation

Time: 1936

Location: ...

Method: ...

Results: ...

TABLE IV

Summary of the results of the investigation

Time: 1937

Location: ...

Method: ...

Results: ...

TABLE V

Summary of the results of the investigation

Time: 1938

Location: ...

Method: ...

Results: ...



## CHAPTER IV

### SUMMARY OF RESULTS

#### ALL NAVAJOS COMPARED WITH ALL PUEBLOS BY GRADES

Grade	Tonal-Memory	Pitch	Intensity	Time	Rhythm
7	superior*	superior*	superior*	superior	inferior*
8	superior*	superior*	inferior*	inferior*	inferior
9	inferior*	superior*	superior*	inferior*	inferior
10	inferior*	superior*	inferior*	superior*	inferior*
11	inferior*	inferior*	superior*	inferior*	inferior*
12	inferior*	inferior*	superior*	inferior*	inferior*

#### ALL NAVAJO GIRLS COMPARED WITH ALL PUEBLO GIRLS AND

#### ALL NAVAJO BOYS COMPARED WITH ALL PUEBLO BOYS

Sex	Tonal-Memory	Pitch	Intensity	Time	Rhythm
Girls	inferior*	superior*	inferior*	inferior*	inferior
Boys	inferior*	superior*	inferior*	superior*	inferior*

\* Not significant.



Grade	First Name	Last Name	Initials
1	John	Smith	JS
2	James	Johnson	JJ
3	John	Johnson	JJ
4	John	Johnson	JJ
5	John	Johnson	JJ
6	John	Johnson	JJ
7	John	Johnson	JJ
8	John	Johnson	JJ
9	John	Johnson	JJ
10	John	Johnson	JJ
11	John	Johnson	JJ
12	John	Johnson	JJ

Grade	First Name	Last Name	Initials
1	John	Smith	JS
2	James	Johnson	JJ
3	John	Johnson	JJ
4	John	Johnson	JJ
5	John	Johnson	JJ
6	John	Johnson	JJ
7	John	Johnson	JJ
8	John	Johnson	JJ
9	John	Johnson	JJ
10	John	Johnson	JJ
11	John	Johnson	JJ
12	John	Johnson	JJ



## ALL BOYS COMPARED WITH ALL GIRLS BY TRIBE

Tribe	Tonal Memory	Pitch	Intensity	Time	Rhythm
Navajo	superior*	superior*	superior*	superior	superior
Pueblo	superior*	inferior*	superior*	superior*	superior*

## ALL NAVAJO BOYS COMPARED WITH ALL PUEBLO GIRLS ALSO

## ALL PUEBLO BOYS COMPARED WITH ALL NAVAJO GIRLS

Group	Tonal Memory	Pitch	Intensity	Time	Rhythm
A	inferior*	superior*	superior*	superior	inferior*
B	superior*	inferior*	superior*	superior	superior

NOTE: Group "A" indicates Navajo boys to Pueblo girls, while group "B" indicates Pueblo boys to Navajo girls.

\* Not significant.



THE HISTORY OF THE UNITED STATES

The history of the United States is a story of growth and development. It begins with the first settlers who came to the New World in search of a better life. They found a land of opportunity, but also a land of challenge. The early years were marked by struggle and hardship, but the spirit of the pioneers was unyielding. They built a nation from scratch, one that was based on the principles of liberty and justice for all.

The American Revolution was a turning point in the nation's history. It was a time of great change and upheaval. The people rose up against the British and fought for their independence. The war was long and difficult, but in the end, the United States emerged as a free and sovereign nation. The Constitution was written, and the new government was established. The nation was now united under a single flag.

The 19th century was a time of great progress and achievement. The nation grew in size and power. The industrial revolution brought about great changes in the way people lived and worked. The United States became a world power, and its influence was felt in every corner of the globe. The nation was now a force to be reckoned with.

The 20th century has been a time of great challenges and triumphs. The nation has faced many difficult times, but it has always emerged stronger and more united. The United States has played a leading role in the world, and its values of liberty and justice have inspired people everywhere. The future of the nation is bright, and the American dream is still within reach.



## CONCLUSION

1.       The Pueblos in all grades are superior to the Navajos in rhythm, but only in grades 8 and 9 are these differences significant. Navajos in the seventh grade are sufficiently superior in time discrimination to indicate a significant difference. In the eighth grade, however, the position is reversed, a significant difference indicates that the Pueblos are superior in time discrimination.
2.       When comparison is made as to sex, the Pueblo girls are superior in tonal memory, intensity, time, and rhythm, while the Navajo girls are superior in pitch. The Pueblo boys are superior in tonal memory, intensity, and rhythm, the Navajo boys are superior in pitch and time.
3.       The Navajo boys are superior to the Navajo girls in tonal memory, pitch, intensity, time and rhythm; a significant difference was found in time and rhythm. The Pueblo boys are superior to the Pueblo girls in tonal memory, intensity, time, and rhythm; but inferior in pitch. None of the differences, however, are significant.



1. The following all appear to be the same

person, but this is not certain.

2. The following all appear to be the same

person, but this is not certain.

3. The following all appear to be the same

person, but this is not certain.

4. The following all appear to be the same

person, but this is not certain.

5. The following all appear to be the same

person, but this is not certain.

6. The following all appear to be the same

person, but this is not certain.

7. The following all appear to be the same

person, but this is not certain.

8. The following all appear to be the same

person, but this is not certain.

9. The following all appear to be the same

person, but this is not certain.

10. The following all appear to be the same

person, but this is not certain.

11. The following all appear to be the same

person, but this is not certain.

12. The following all appear to be the same

person, but this is not certain.

13. The following all appear to be the same

person, but this is not certain.

14. The following all appear to be the same

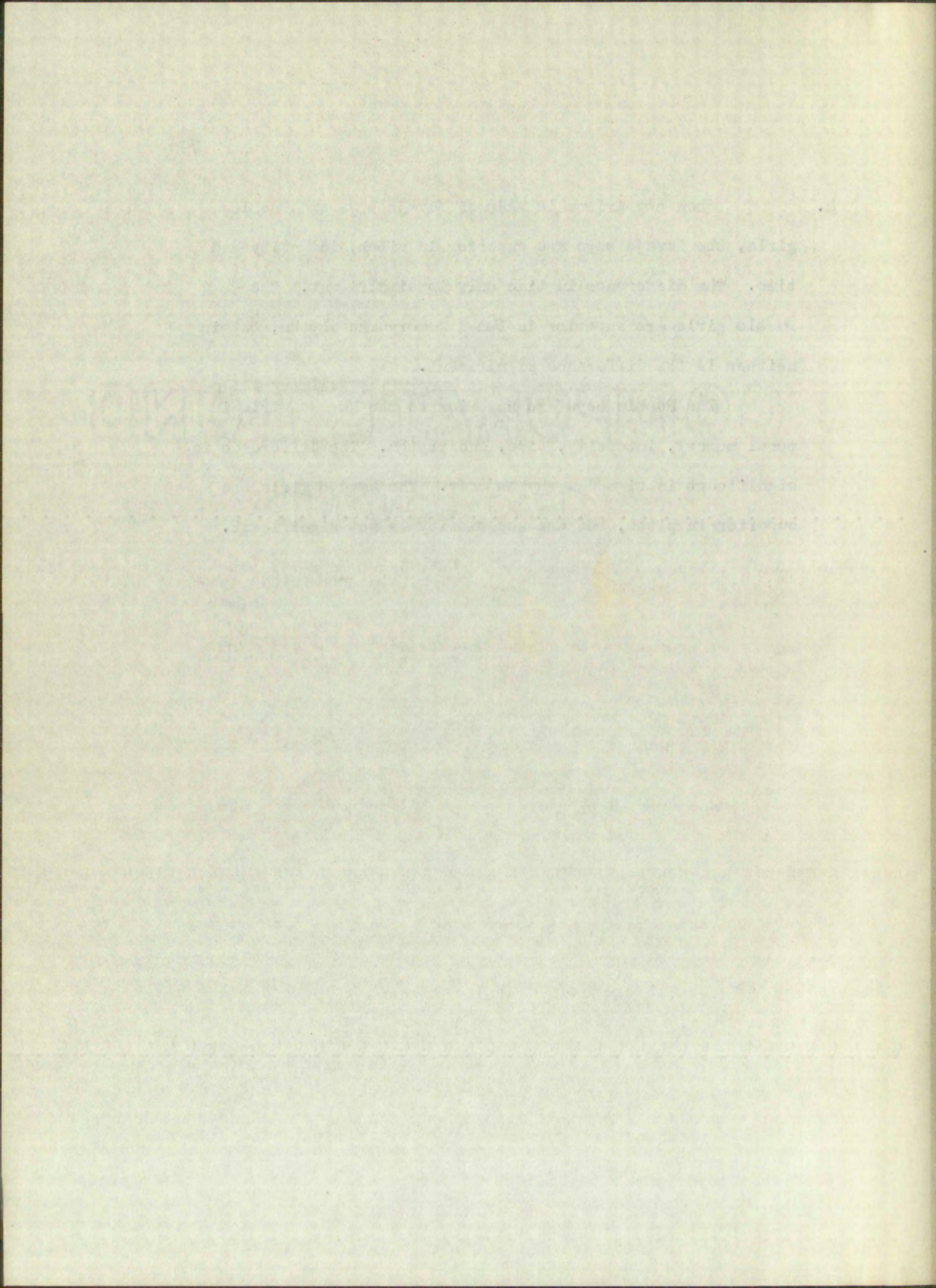
person, but this is not certain.



4. When comparison is made of Navajo boys and Pueblo girls, the Navajo boys are superior in pitch, intensity and time. The difference in time only is significant. The Pueblo girls are superior in tonal memory and rhythm, but in neither is the difference significant.

The Pueblo boys are superior to the Navajo girls in tonal memory, intensity, time, and rhythm. The difference is significant in time and rhythm only. The Navajo girls are superior in pitch, but the superiority is not significant.







## BIBLIOGRAPHY

- Brenan, F. M., The Relation Between Musical Capacity and Performance. Psychol. Monograph. XXXVI (1926) pp. 190-248
- Farnsworth, P. R., A historical critical experimental study of the Seashore-Kwalwasser Test Battery. Genetic Psych. Monograph. IX (May 1931) pp. 299-310
- Garrett, H. E., Statistics in Psychology and Education. New York: Longmans Psych. Series, 1932, p. 134
- Garth, T. R., Race Psychology. New York: McGraw-Hill Book Co., 1931, pp. 127-155
- Hewett, E. L., Ancient Life In The American Southwest. Indianapolis: Bobbs-Merrill Co., 1930, 392p.
- Hollingsworth, L. S., Musical sensitivity of children who test above 135 I. Q., Journal Educational Psychology, XVII, (Feb. 1926) pp 95-109
- Larson, W. S., Measurement of musical talent for the prediction of success in instrumental music. Iowa City: Univ. of Iowa, 1928 (Thesis)
- ....., Measurement of musical talent for the prediction of success in instrumental music, Psychol. Monograph. XL (1930) pp 33-73
- Mursell, J. L., Measuring Musical Ability and Achievement. A study of correlation of Seashore test scores and other variables. Journal of Educational Research, XXV (Feb. 1932) pp 116-126
- McCauley, C. J., A Professionalized Study of Public School Music. Knoxville, Tenn: Avent Publisher, 1932, 787p
- Moos, J. L., The yardstick Applied to Musical Talent, Musical Quarterly, XVI (April 1930) pp 238-262
- Kwalwasser, J., Tests and Measurements in Music. New York: C. C. Buchard and Company, 1927, 137p



1910

1911

1912

1913

1914

1915

1916

1917

1918

1919

1920

1921

1922

1923

1924

1925



## BIBLIOGRAPHY (Continued)

- Mursell, J. L., Principles of Musical Education. New York: The Macmillan Co., 1927, pp 113-114
- Ross, V. R., The Relation between Intelligence Scholastic Achievement and Musical Talent of Three Racial Groups. Los Angeles: Univ. of Southern California, 1931 (Thesis)
- Stanton, H. M., Prognosis of Musical Achievement. Eastman School of Music, Vol. 1, 1929
- ....., Seashore measures of Musical Talent, Psychol. Monograph. XL (1928) pp 135-144
- ....., The Inheritance of Specific Musical Capacities, Psych. Mon. XXXI (1922) pp 157-204
- Seashore, C. E., Manual of Instructions and Interpretations for Measures of Musical Talent. Chicago: C. H. Stoelting Co.
- ....., The Inheritance of Musical Talent. Musical Quarterly, VI (Oct. 1920) pp 586-598
- ....., The Psychology of Musical Talent. New York: Silver Burdett and Co., 1919. 288p
- ....., Measures of Musical Talent, Disc-records Cat. No. 42060-1 to 42060-6, Columbia Graphophone Co., N. Y.
- Thorndike, E. L., Educational Psychology. New York: Bureau of Publication, Teachers College, Columbia Univ. III, pp 305-6



# CORPORATE FORM

1

NAME OF CORPORATION

INCORPORATED IN THE STATE OF

OFFICE OF THE CORPORATION

STATE OF

DATE OF INCORPORATION

NUMBER OF SHARES OF CAPITAL STOCK

NAME OF PRESIDENT

NAME OF SECRETARY

NAME OF TREASURER

NAME OF ATTORNEY AT LAW

NAME OF REGISTERED MAILING ADDRESS

NAME OF REGISTERED OFFICE

NAME OF REGISTERED AGENT

NAME OF REGISTERED CLERK

NAME OF REGISTERED CHIEF OF POLICE

NAME OF REGISTERED SHERIFF

NAME OF REGISTERED JUDGE







# IMPORTANT!

Special care should be taken to prevent loss or damage of this volume. If lost or damaged, it must be paid for at the current rate of typing.

Date Due		
1-13-41		NOT 27 RECD
DEC 15 1952		JUL 20 1959
<del>JUL 28 1953</del>		<del>JUL 31 RECD</del>
<del>JUL 7 1954</del>		
CARRELL		AUG 10 1959
JUL 19 1954		AUG 10 RECD
DO NOT CIRCULATE		AUG 12 1960
JUN 22 55		JUL 28 1960
JUL 8 1955		JAN 28 1961
CARRELL		JAN 27 RECD
		AUG 16 1963
JUL 27 1958		AUG 8 1963
AUG 12 1955		
DEC 7 1955		CARRELL
		FEB 20 RECD
©		



