

2007

Course Schedule, UNM Valencia Campus, Spring 2007

Valencia Registrar

Follow this and additional works at: https://digitalrepository.unm.edu/valencia_registrar

Recommended Citation

Valencia Registrar. "Course Schedule, UNM Valencia Campus, Spring 2007." (2007). https://digitalrepository.unm.edu/valencia_registrar/1

This Other is brought to you for free and open access by the Branch Campus Archives at UNM Digital Repository. It has been accepted for inclusion in Valencia Registrar's Office by an authorized administrator of UNM Digital Repository. For more information, please contact disc@unm.edu.



Spring Schedule of Classes

- Spring 2007 courses begin January 16
 - Registration (LoboWeb) starts November 27
 - Off-campus classes offered in Socorro & Moriarty ... see pages 23 & 24
 - Bachelor & Graduate Programs at UNM-Valencia...see pages 25-28
 - Personal Enrichment Courses...see page 29
- Need more information? Need to set an appointment with an advisor? Call 925-8580

Dreams Start Here!
Enroll at UNM-Valencia
925-8580

2 0 0 7

Office Information

Web Site

www.unm.edu/~unmvc

Phone

Registration	(505) 925-8580
Student Advisement	(505) 925-8560
Community Education	(505) 925-8970
General Information	(505) 925-8500
Adult Education Center	(505) 925-8900
Small Bus. Dev. Center	(505) 925-8980

(For a complete list of campus phone numbers, see the back cover.)

Campus Office Hours

Monday through Friday, 8 a.m. to 5 p.m., unless otherwise noted.

Need further assistance?

Call 925-8580. We can help you with information on credit class registration.

Three Easy Ways To Register

In Person

Advisement & Counseling Center
UNM-Valencia Campus
280 La Entrada
Los Lunas, NM 87031
(505) 925-8560

By Phone*

Use LoboWeb
(505) 246-2020
Available 24 hours a day, 7 days a week.

Online*

LoboWeb (my.unm.edu)
Available 24 hours a day, 7 days a week starting April 17.

** You must be registered before using LoboWeb.*

Our Mission is to Serve You!

The mission of the University of New Mexico-Valencia Campus is to provide community residents with lifelong educational opportunities in order to better prepare them to actively participate in the world as productive, responsible, and creative individuals.

Register Now!

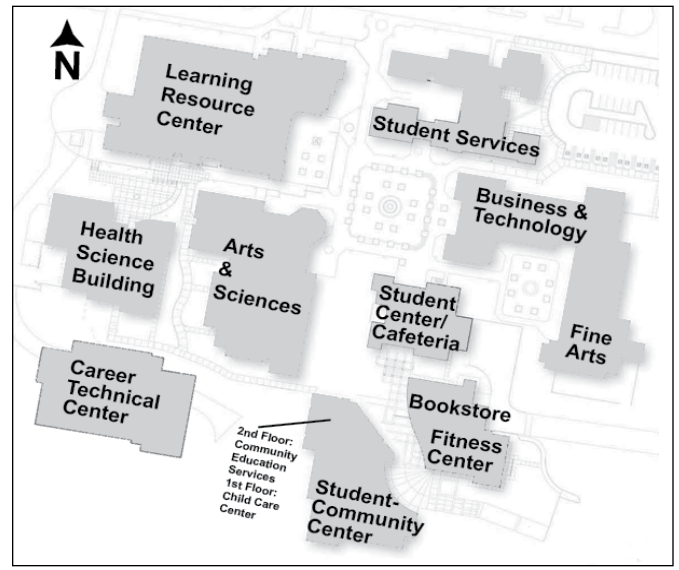
Many classes fill quickly. To design a course schedule that meets your busy schedule, start the enrollment process now!

TABLE OF CONTENTS

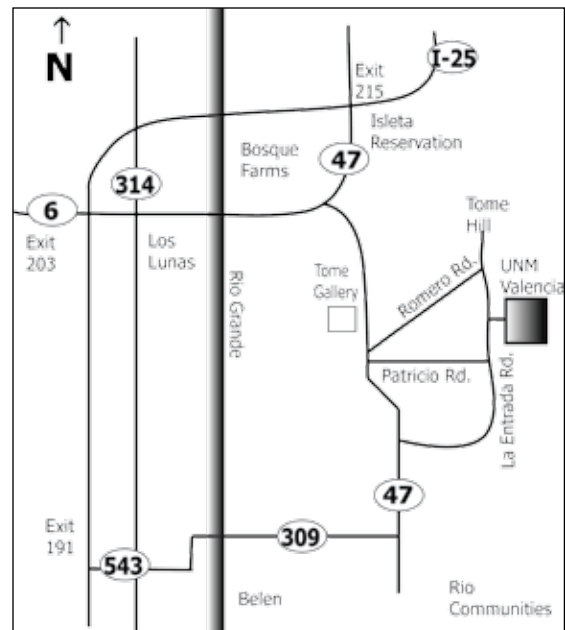
Table of Contents

UNM-Valencia Campus Map	1
Map & Directions to Campus.....	1
How To Enroll at UNM-Valencia.....	2
LoboWeb.....	4
Spring 2007 Academic Calendar.....	5
Spring 2007 Courses	6-19
Footnotes.....	6 & 19
Online & Hybrid Courses	18
Late Starting & Weekend College Courses.....	19
Adult Education Center.....	20 & 21
Small Business Development Center.....	22
Off-Campus Instruction (Socorro & Moriarty)	23 & 24
Bachelor & Graduate Programs at UNM-Valencia.....	25-28
Personal Enrichment & Professional Development Courses.....	29
Cultural Enrichment Series	30
Training Center for CPR & First Aid.....	31
Community Education Services.....	32
Tuition & Registration Information.....	33
Spring 2007 Tuition Calculation Chart	33
Parking Permits	34
Bookstore.....	34
Cafeteria.....	34
UNM Valencia Campus Application for Admission.....	35 & 36
Fall Final Exam Schedule	Inside back cover
Campus Phone Numbers	Back cover

UNM-Valencia Campus



Map to UNM-Valencia Campus



From the North:
From Albuquerque, take I-25 south the Exit 215. Turn south on NM 47 and proceed to the Valencia "Y" Shopping Center. Turn left at the light in front of the shopping center and stay on NM 47 for 5.5 miles to Patricio Road. Patricio Road is just south of Tome Gallery. Turn left onto Patricio, proceed 1 mile to La Entrada. Turn left onto La Entrada, then right to the campus.

From the South:
From Socorro, take I-25 north to Exit 191. Go east on Camino de Llano (NM 548) to Main Street in Belen. Turn left onto Main and proceed north to Reinken (NM 309). Turn right onto Reinken and head east to NM 47. Turn left onto NM 47 and proceed north for 3 miles to La Entrada Road. Turn right onto La Entrada and proceed 3.7 miles to the campus on the right.

Q: How do I enroll at UNM-Valencia?



If you have any questions while filling out an application form, just take it to the reception desk of Student Services' Advisement & Counseling Center. They will gladly assist you with this process. UNM-Valencia has an open door policy. You will also schedule your placement test and your group advisement session at the center.



By taking the placement test, you will know what courses are best suited for you and will help ensure your success in college. If you have SAT or ACT scores, you can skip the test.

A. You complete an application form and visit the campus!

See pages 35-36 of this schedule for an application form and see page 1 for a map to the campus.

After completing the form and coming to the campus, you:

- Pay a one-time \$15 application fee at the Cashiers.
- Turn in the application to the Registrar's Office.
- Visit the Advisement & Counseling Center.

The Advisement & Counseling Center will help you with the placement assessment testing. The placement test is important because that is how advisors can assist you on what classes you need to take.

You will also schedule a new student orientation and group advisement session while at the Advisement & Counseling Center.



Advisement helps ensure success in college. New students participate in group advisement. After that initial advisement, you can schedule an individual appointment with our advisors.

Q. How much does it cost to attend UNM-Valencia?

A. Tuition is very affordable at UNM-Valencia. It's a *fourth* of the cost of several four-year institutions in New Mexico. See page 33 for the spring tuition chart.

Q. What does a parking permit cost and is there a waiting list for permits?

A. Parking is **FREE** and we have two **LARGE** parking lots. Parking is never a problem. See page 34.

Q. Are UNM-Valencia academic classes accepted at other schools?

A. All academic credits earned at UNM-Valencia can be transferred to other colleges and universities in New Mexico and the rest of the United States. We offer the *core* academic curriculum. See pages 6-19 for the spring schedule.



Registering for classes is done at the Registrar's Office, and it is located in the same building as Student Services.

The Financial Aid staff can also assist you with applying for grants, loans, and scholarships. The Financial Aid Office is adjacent to the Registrar's Office.



Payment for classes is done at the Cashier's Office, located right next to the Registrar's. The Cashier's Office is also where funds for scholarships and grants are distributed.

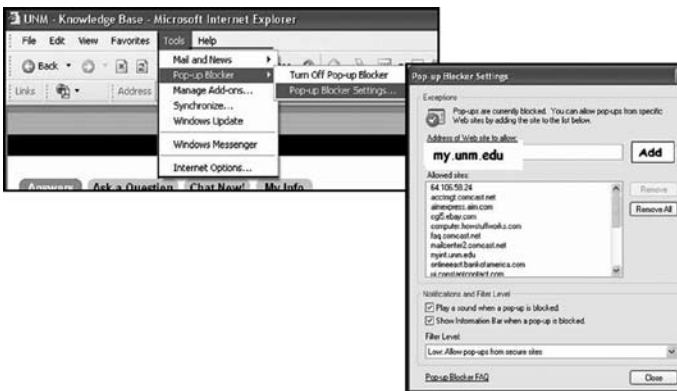
Student Services is a One-Stop Shop!
You can register, enroll, apply for financial aid, and pay for your classes all at one place.



The University of New Mexico LoboWeb

Want to get to LoboWeb?

- Start at myUNM (<http://my.unm.edu>)
- Enable pop ups from myUNM



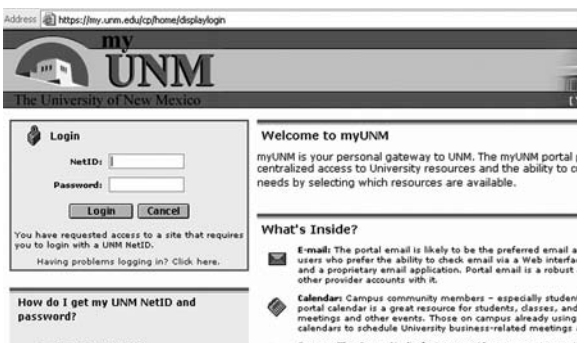
Click on the *Student Life* tab



Click on *Go to LoboWeb*



**Logo on to <http://my.unm.edu>
with your Net ID & Password**



Need a NetID & Password?

**Go to <http://countdown.unm.edu>
and get one**

- LoboWeb uses the word ***Term*** instead of ***Semester***
- LoboWeb has information for all UNM campuses, as well as online, hybrid, and Extended University courses.
- For LoboPhone, call 505-246-2020.

2007 Spring Semester

Martin Luther King, Jr. Day Holiday	January 15, Monday
Instruction Begins.....	January 16, Tuesday
Petitions for Residency Due	January 16, Tuesday
Registration Ends.....	January 20, Saturday
End of Second Week (Last Day To Add Courses or Change Sections)	January 26, Friday
Last Day To Drop with a Refund (16-week courses)	February 2, Friday
Courses 3 weeks or less.....	First day of class
Courses longer than 3 weeks, up to 6 weeks.....	Friday of the first week of classes
Courses longer than 6 weeks, up to 9 weeks.....	Friday of the second week of classes
Courses longer than 9 weeks.....	Friday of the third week of classes
Last Day To Change Grading Options	
16-week term.....	February 9, Friday
First 8-week term.....	January 26, Friday
Second 8-week term.....	March 23, Friday
Last Day To Drop a Course without a Grade	
16-week term.....	February 23, Friday
First 8-week term.....	February 2, Friday
Second 8-week term.....	March 30, Friday
Mid-semester (eighth week).....	March 10, Saturday
Spring Break	March 11 - 18, Sunday-Sunday
Last Day To Withdraw without Approval of the Director of Student Affairs	
16-week term.....	April 13, Friday
First 8-week term.....	February 23, Friday
Second 8-week term.....	April 27, Friday
Last Day To Withdraw from a Course with Approval of the Director of Student Affairs	
16-week term.....	May 4, Friday
First 8-week term.....	March 2, Friday
Second 8-week term.....	May 4, Friday
Last Day of Instruction	May 5, Saturday
Final Examination Period	May 5-12, Saturday-Saturday
Last Day for Report of Removal of Incomplete Grade	May 11, Friday
Commencement	May 11, Friday
Semester Ends	May 12, Saturday

Extended Hours:

Advisement, Admissions, Registration, Financial Aid:

January 16-18 (Tuesday - Thursday): 8:00 am – 6:00 pm

January 19 (Friday): 8:00 am – 5:00 pm

January 20 (Saturday): 8:30 am – 12 noon

Spring Schedule

Developmental Studies Learning Communities.....	7	History (HIST).....	11
Academic Studies (ACAD).....	7	Information Technology (IT).....	12
Anthropology (ANTH).....	7	Linguistics (LING).....	12
Art History (ARTH).....	7	Mathematics (MATH) & Statistics (STAT).....	12
Art Studio (ARTS).....	8	Music (MUS).....	14
Astronomy (ASTR).....	8	Natural Science (NTSC).....	14
Biology (BIOL).....	8	Nursing (NURS).....	14
Business Administration (BSM, MGMT).....	9	Nutrition (NUTR).....	14
Certified Nursing Assistant (CNA).....	9	Office & Business Technology (OBT).....	14
Chemistry (CHEM).....	9	Personal Care Attendant (PCA).....	15
Communication & Journalism (CJ).....	9	Pharmacy Technician (PHRT) (New Program!).....	15
Computer Aided Drafting (CADT).....	9	Philosophy (PHIL).....	15
Computer Science (CS).....	10	Physical Education (PENP).....	15
Early Childhood Multicultural Education (ECME).....	10	Physics (PHYS).....	17
Earth & Planetary Science (EPS).....	10	Political Science (POLS).....	17
Economics (ECON).....	10	Psychology (PSY).....	17
Education (EDUC).....	10	Religious Studies (RELG).....	17
Emergency Medicine Science (EMS).....	10	Sign Language (SIGN).....	18
English (ENGL).....	10	Sociology (SOC).....	18
Health Education (HED).....	11	Spanish (SPAN).....	18

For online and hybrid courses or Weekend College, see pp. 18 & 19

Location Key

- A Arts & Sciences Building
- C Career Technical Center
- H Health Sciences Building
- S Student/Community Center (includes Fitness/Wellness Center, Multipurpose Room, & upstairs classrooms)
- V Business & Technology Building

Footnote Key

- A Open entry/open exit.
- C Credit/no credit grading only.
- F Students need to plan for up to two (2) hours of out-of class lab or studio time per week.
- H Students are responsible for purchasing their own materials.
- L Students must enroll in a lab section.
- M Upper-division UNM courses offered at UNM-Valencia require that students be admitted to UNM (main campus), pay main campus tuition, and be advised prior to enrollment. Please consult with the Registrar or the instructor prior to enrolling.
- P See UNM General Catalog or UNM-Valencia Catalog for pre-requisites, co-requisites, and/or other information and requirements.
- R Restricted: requires advance approval from department or instructor.
- X Cross-listed course: see UNM General Catalogue or UNM-Valencia Catalogue for other listings.
- Z Special fee.

NOTE: Classes in grey type indicate evening and night courses.

SPRING 2007 COURSES

Developmental Studies Learning Communities

Learning communities provide tutors, supplemental instruction and the opportunity to work with the same group of students. At UNM-Valencia we are committed to your success, and your participation in this program will increase your chances to get your degree! This is what students who have participated in learning communities have to say.

"If it wasn't for the learning community, I probably wouldn't be where I am now. I strongly encourage anyone who wants to get the help they really need to look into it."

–Bernice Baldonado

"The learning community has really helped me out as an adult returning to school. Working with the same group of people really helps a lot."

I think that the learning community is an excellent program."

– Jeanette Lopez

"The learning community means a lot to me. It's my second family; they're there to encourage me in every way and I'm thankful to be part of it."

– Ashley Carrillo

The following is the schedule of classes for the developmental studies learning communities:

CRN	FN	Course	Sec.	Course Title	CH	Days	Time	Room	Instructor	Fees
GROUP A: ACAD 100 & MATH 099										
	PZ	ACAD 100	501	College Reading & Study Skills (Learning Community)	4	MW	1:30 PM - 3:10 PM	H105	Staff	\$5.00
	RPZ	MATH 099	502	Pre-Algebra (Learning Community)	4	MW	9:00 - 10:40 AM	H105	Staff	\$5.00
GROUP B: ACAD 100 & ENGL 099										
	PZ	ACAD 100	502	College Reading & Study Skills (Learning Community)	4	TTh	11:00 AM - 12:40 PM	H105	Staff	\$5.00
	PZ	ENGL 099	501	Developmental English (Learning Community)	4	TTh	9:00 - 10:40 AM	H103	Staff	\$5.00
GROUP C: ENGL 100 & MATH 100										
	PZ	ENGL 100	502	Writing Standard English (Learning Community)	4	MW	9:00 - 10:40 AM	H103	Staff	\$5.00
	RPZ	MATH 100	502	Introductory Algebra (Learning Community)	4	MW	11:00 AM - 12:40 PM	H105	Staff	\$5.00
GROUP D: ACAD 101 & ENGL 100 & MATH 100										
	PZ	ACAD 101	502	College Prep (Learning Community)	4	TTh	9:00 - 10:40 AM	H105	Staff	\$5.00
	PZ	ENGL 100	505	Writing Standard English (Learning Community)	4	TTh	1:30 PM - 3:10 PM	H103	Staff	\$5.00
	RPZ	MATH 100	506	Introductory Algebra (Learning Community)	4	TTh	11:00 AM - 12:40 PM	H108	Staff	\$5.00
GROUP E: ACAD 101 & ENGL 100 & MATH 100										
	PZ	ACAD 101	503	College Prep (Learning Community)	4	TTh	1:30 PM - 3:10 PM	H105	Staff	\$5.00
	PZ	ENGL 100	503	Writing Standard English (Learning Community)	4	TTh	11:00 AM - 12:40 PM	H103	Staff	\$5.00
	RPZ	MATH 100	504	Introductory Algebra (Learning Community)	4	TTh	9:00 - 10:40 AM	A141	Staff	\$5.00

If you are going to be taking more than one developmental class in the spring, you could be part of a learning community. Please call 925-8580 or drop by Student Services to visit with an advisor for more information and to apply for this exceptional opportunity.

Academic Studies (ACAD)

CRN	FN	Course	Sec/	Course Title	CH	Days	Time	Room	Instructor	Fees
22724	PZ	ACAD 101	501	College Prep	4	MW	8:30 - 10:10 AM	C111	Staff	\$5.00
22727	PZ	ACAD 101	504	College Prep	4	TTh	4:00 - 5:40 PM	H105	Staff	\$5.00
ACAD 101 is a developmental studies course required for students who place into ENGL 100										
Anthropology (ANTH)										
22529		ANTH 101	501	Introduction to Anthropology	3	MW	9:00 - 10:15 AM	A133	Staff	
ANTH 101 meets 3 of the 6 credit hours required for UNM's Core Curriculum in Social & Behavioral Sciences										
22533	X	ANTH 110	501	Language/Culture/Human Animal	3	TTh	10:30 - 11:45 AM	A133	Staff	
22534	X	LING 101	501	Intro to the Study of Language	3	TTh	10:30 - 11:45 AM	A133	Staff	
ANTH 110.501 & LING 101.501 are cross-listed										
22729	X	ANTH 110	502	Language/Culture/Human Animal	3	TTh	12:00 PM - 1:15 PM	A133	Staff	
22730	X	LING 101	502	Intro to the Study of Language	3	TTh	12:00 PM - 1:15 PM	A133	Staff	
ANTH 110.502 & LING 101.502 are cross-listed										
ANTH 110 & LING 101 meet 3 of the 6 credit hours required for UNM's Core Curriculum in Social & Behavioral Sciences										
27367		ANTH 150	501	Evolution and Human Emergence	3	MW	9:00 - 10:15 AM	A133	Staff	
ANTH 150 meets 3 of the 7 credit hours required for UNM's Core Curriculum in Physical & Natural Sciences										
27549	Z	ANTH 151L	501	Human Evolution Lab	1	W	10:30 AM - 12:45 PM	H113	Staff	\$10.00
ANTH 150L meets 1 of the 7 credit hours required for UNM's Core Curriculum in Physical & Natural Sciences										
27368		ANTH 251	501	Forensic Anthropology	3	TTh	6:00 - 7:15 PM	A101	Staff	
Art History (ARTH)										
22731		ARTH 101	501	Intro to Art	3	MW	4:30 - 5:45 PM	A101	Coker, D.	
ARTH 101 meets 3 of the 3 credit hours required for UNM's Core Curriculum in Fine Arts										
27369		ARTH 201	501	History of Art I	3	MW	10:30 - 11:45 AM	A101	Coker, D.	
ARTH 201 meets 3 of the 3 credit hours required for UNM's Core Curriculum in Fine Arts										

SPRING 2007 COURSES

Art Studio (ARTS)

27370	FH	ARTS 106	501	Drawing I	3	MW	9:00 - 11:30 AM	V106	Staff	\$12.50
ARTS 106 meets 3 of the 3 credit hours required for UNM's Core Curriculum in Fine Arts										
27371	PFHZ	ARTS 121	501	2-Dimensional Design	3	MW	12:00 PM - 2:30 PM	V106	Staff	\$12.50
ARTS 121 meets 3 of the 3 credit hours required for UNM's Core Curriculum in Fine Arts										
22540	FHZ	ARTS 168	501	Ceramics I	3	TTh	1:30 PM - 4:00 PM	V150	Ceschiat, M.	\$25.00
ARTS 168 meets 3 of the 3 credit hours required for UNM's Core Curriculum in Fine Arts										
22543	FHZ	ARTS 187	501	Photography I (combo)	3	TTh	10:00 AM - 12:30 PM	V149	Ceschiat, M.	\$25.00
ARTS 187 meets 3 of the 3 credit hours required for UNM's Core Curriculum in Fine Arts										
27372	FHZ	ARTS 188	501	Visualizing Ideas Using Photography (combo)	3	TTh	10:00 AM - 12:30 PM	V149	Ceschiat, M.	\$25.00
ARTS 188 meets 3 of the 3 credit hours required for UNM's Core Curriculum in Fine Arts										
22757	FHZ	ARTS 207	501	Painting I	3	TTh	1:30 PM - 4:00 PM	V106	Coker, D.	\$12.50
ARTS 207 meets 3 of the 3 credit hours required for UNM's Core Curriculum in Fine Arts										
27718	PFHZ	ARTS 213	501	Sculpture I	3	TTh	10:00 AM - 12:30 PM	V150	Coker, D.	\$25.00
ARTS 213 meets 3 of the 3 credit hours required for UNM's Core Curriculum in Fine Arts										
27550	PFHZ	ARTS 274	501	Introduction to Printmaking	3	TTh	10:30 AM - 1:00 PM	V106	Staff	\$25.00
ARTS 274 meets 3 of the 3 credit hours required for UNM's Core Curriculum in Fine Arts										
22758	PFHZ	ARTS 289	501	Digital Imaging Techniques	3	MW	10:00 AM - 12:30 PM	V107	Ceschiat, M.	\$25.00
ARTS 289 meets 3 of the 3 credit hours required for UNM's Core Curriculum in Fine Arts										

Astronomy (ASTR)

22759		ASTR 101	501	Intro to Astronomy	3	MW	6:00 - 7:15 PM	A101	Staff	
ASTR 101 meets 3 of the 7 credit hours required for UNM's Core Curriculum in Physical & Natural Sciences										
22760	PZ	ASTR 101L	501	Astronomy Lab	1	M	7:30 - 9:30 PM	A126	Staff	\$15.00
22761	PZ	ASTR 101L	502	Astronomy Lab	1	W	7:30 - 9:30 PM	A126	Staff	\$15.00
ASTR 101L meets 1 of the 7 credit hours required for UNM's Core Curriculum in Physical & Natural Sciences										

Biology (BIOL)

22763		BIOL 110	501	Biology for Non-Majors	3	TTh	4:30 - 5:45 PM	A133	Staff	
BIOL 110 meets 3 of the 7 credit hours required for UNM's Core Curriculum in Physical & Natural Sciences										
22764	Z	BIOL 112L	501	Biology for Non-Majors Lab	1	T	6:00 - 8:00 PM	A135	Staff	\$30.00
BIOL 112L meets 1 of the 7 credit hours required for UNM's Core Curriculum in Physical & Natural Sciences										
22767		BIOL 123	501	Biol for Health-Related Sci/Non-Maj	3	MW	9:00 - 10:15 AM	A131	Barreto, C.	
22768		BIOL 123	502	Biol for Health-Related Sci/Non-Maj	3	TTh	3:00 - 4:15 PM	A131	Barreto, C.	
BIOL 123 meets 3 of the 7 credit hours required for UNM's Core Curriculum in Physical & Natural Sciences										
22769	Z	BIOL 124L	501	Biol Health-Related Sci/Non-Maj Lab	1	M	10:30 AM - 1:15 PM	A135	Staff	\$30.00
22770	Z	BIOL 124L	502	Biol Health-Related Sci/Non-Maj Lab	1	W	10:30 AM - 1:15 PM	A135	Staff	\$30.00
22771	Z	BIOL 124L	503	Biol Health-Related Sci/Non-Maj Lab	1	Th	4:30 - 7:15 PM	A135	Staff	\$30.00
BIOL 124L meets 1 of the 7 credit hours required for UNM's Core Curriculum in Physical & Natural Sciences										
27373	PL	BIOL 202	501	Genetics	4	TTh	1:30 PM - 2:45 PM	H108	Barreto, C.	
27374	PZ	BIOL 202L	502	Genetics Lab	0	T	11:00 AM - 1:00 PM	H110	Barreto, C.	\$30.00
BIOL 202 meets 4 of the 7 credit hours required for UNM's Core Curriculum in Physical & Natural Sciences										
27376	P	BIOL 238	501	Human Anatomy & Physiology II	3	MW	10:30 - 11:45 AM	H101	Barreto, C.	
27378	P	BIOL 238	502	Human Anatomy & Physiology II	3	TTh	10:30 - 11:45 AM	H101	Chavez, M.	
27380	P	BIOL 239	501	Microbiology for Health Sciences	4	TTh	1:30 PM - 2:45 PM	A133	Chavez, M.	
27381	PZ	BIOL 239L	501	Microbiology for Health Sciences Lab	0	T	3:00 - 5:45 PM	H110	Staff	\$35.00
27382	PZ	BIOL 248L	501	Human Anatomy & Physiology Lab II	1	Th	3:00 - 5:45 PM	H113	Staff	\$30.00
27383	PZ	BIOL 248L	502	Human Anatomy & Physiology Lab II	1	F	9:00 - 11:45 AM	H113	Staff	\$30.00
27384	PZ	BIOL 248L	503	Human Anatomy & Physiology Lab II	1	F	12:00 PM - 2:45 PM	H113	Staff	\$30.00
22827	P	BIOL 299	501	T/Prosection	1	ARR			Staff	

Take a class in the new Digital Media Arts Computer Lab!

One new and three reformatted digital media arts courses are offered this spring in the new multi-media lab.

NEW

• **ARTS 188 Visualizing Ideas Using Photography:** Learn how to develop visual imagery using black-and-white, digital, and color processes.

REFORMATTED

• **ARTS 187 Photography I:** Black-and-white photography now with digital and color!

• **ARTS 289 Digital Photography:** More elaborate development and production of digital imagery.

• **IT 270 Computer Graphics and Animation:** Now with Adobe Illustrator!

NOTE: Students must have basic computer and file management skills for all DMA Courses; Suggested prerequisite is IT 101: Computer FUNDamentals.

SPRING 2007 COURSES

Business Administration (BSM, MGMT)

22778		MGMT 101	501	Fundamentals of Accounting I	3	MW	4:00 - 5:15 PM	V120	Staff	
27736	P	MGMT 101L	501	Fund of Accounting I Lab	1	MW	5:15 - 5:45 PM	V120	Staff	
27386		MGMT 102	501	Fundamentals of Accounting II	3	MW	6:00 - 7:15 PM	V120	Staff	
27430	P	MGMT 102L	501	Fund of Accounting II Lab	1	MW	7:15 - 7:45 PM	V120	Staff	

MGMT 101 & MGMT 102 (together) are the equivalent of MGMT 202 at UNM-ABQ; MGMT 101L & MGMT 102L are required labs but are not accepted as credit at UNM-ABQ

27387	PZ	MGMT 113	501	Management: An Introduction	3	TTh	1:30 PM - 2:45 PM	V118	Castillo, S.	
22780		BSM 116	501	Human Relations in Business	3	TTh	3:00 - 4:15 PM	V118	Castillo, S.	

Certified Nursing Assistant (CNA)

28068	Z	CNA 101	501	Certified Nursing Assistant (1/16 - 3/2)	8	TTh	9:00 AM - 1:00 PM	H115	Staff	\$40.00
				Certified Nursing Assistant		F	8:00 AM - 4:00 PM	H115	Staff	

CNA 101.501 is a short-term course - classes begin on Tuesday, January 16 and end on Friday, March 2

28069	Z	CNA 101	502	Certified Nursing Assistant (3/6 - 4/27)	8	TTh	9:00 AM - 1:00 PM	H115	Staff	\$40.00
				Certified Nursing Assistant		F	8:00 AM - 4:00 PM	H115	Staff	

CNA 101.502 is a short-term course - classes begin on Monday, March 6 and end on Friday, April 27

Chemistry (CHEM)

22781	L	CHEM 111	501	Elements of General Chemistry	4	MW	9:00 - 10:15 AM	H101	Brozek, C.	
22782	Z	CHEM 111L	501	Elements of General Chemistry Lab	0	M	10:30 AM - 1:15 PM	A128	Brozek, C.	\$30.00
22783	Z	CHEM 111L	502	Elements of General Chemistry Lab	0	W	10:30 AM - 1:15 PM	A128	Brozek, C.	\$30.00
				CHEM 111/L meets 4 of the 7 credit hours required for UNM's Core Curriculum in Physical & Natural Sciences						
27390	LP	CHEM 122	501	General Chemistry	4	TTh	9:00 - 10:15 AM	A129	Brozek, C.	
27394	Z	CHEM 122L	501	General Chemistry Lab	0	Th	10:30 AM - 1:15 PM	A128	Brozek, C.	\$30.00
				CHEM 122/L meets 4 of the 7 credit hours required for UNM's Core Curriculum in Physical & Natural Sciences						
22786		SCI 099	501	Problem Solving for Chem 122	1	T	10:30 AM - 12:30 PM	A132	Staff	

SCI 099.501 provides tutorial assistance for students enrolled in CHEM 122

Communication & Journalism (CJ)

22788		CJ 130	501	Public Speaking	3	MW	10:30 - 11:45 AM	V120	Black, T.	
22789		CJ 130	502	Public Speaking	3	MW	12:00 PM - 1:15 PM	V120	Black, T.	
22790		CJ 130	503	Public Speaking	3	TTh	9:00 - 10:15 AM	V120	Black, T.	
22791		CJ 130	504	Public Speaking	3	S	12:00 PM - 2:45 PM	A124	Staff	
27395		CJ 130	505	Public Speaking	3	TTh	1:30 PM - 4:15 PM	A140	Staff	

CJ 130.505 is a 2nd 8 weeks course - classes begin on Tuesday, March 20 and end on Thursday, May 10

CJ 130 meets 3 of the 9 credit hours required for UNM's Core Curriculum in Writing & Speaking

Computer Aided Drafting (CADT)

22793	Z	CADT 150	501	Beginning Computer Assisted Drafting	3	MW	10:30 - 11:45 AM	V110	Sanchez, A.	\$15.00
27396	Z	CADT 180	501	Intro to 3D Graphics and Animation	4	TTh	2:00 - 3:45 PM	V110	Sanchez, A.	\$15.00
27397	Z	CADT 195	501	Introduction to Technical Drafting	4	MW	2:00 - 3:45 PM	V110	Sanchez, A.	\$15.00
22795	PZ	CADT 260	501	Intermediate Computer Aided Drafting	4	TTh	10:30 AM - 12:15 PM	V110	Sanchez, A.	\$15.00
22805	PZ	CADT 270	501	Advanced Computer Aided Drafting	4	ARR			Sanchez, A.	\$15.00
23041		CADT 293	501	Beginning Computer Assisted Drafting Lab	1	MW	11:45 AM - 12:35 PM	V110	Sanchez, A.	
22806		CADT 293	502	T/Intro to Architectural Desktop	4	ARR			Staff	

CADT 293.502 is an online course - please see description at the bottom of this page and general information on online courses on page 18

22807	RP	CADT 295	501	Practicum/Cooperative Education	4	ARR			Sanchez, A.	
-------	----	----------	-----	---------------------------------	---	-----	--	--	-------------	--

CADT 293 – Online!

CADT 293 is an online class designed for students who already have a basic knowledge of AutoCAD, Windows, and the Internet. Students will be introduced to Autodesk's Architectural Desktop (ADT) software program that specializes in architectural 3D design and drafting. Students will need to have access to ADT software (ADT 2006) and access to the Internet.

Certified Nursing Assistant Training @ UNM-Valencia Campus!

This course is a wonderful opportunity to gain the skills needed to provide patient/resident care in hospital, health center, or home care settings. It is also a first step toward nursing and other health care fields. Successfully completing this course permits students to sit for the State Certification Exam.

Two Spring Class Choices Available:

January 16 through March 5, 2007: Tues/Thurs, 9A to 1P, and Fridays, 8A to 4P

OR

March 6 through April 27th, 2007: Tues/Thurs, 9A to 1P, and Fridays, 8A to 4P.

SPRING 2007 COURSES

Computer Science (CS)

27398	PZ	CS 150L	501	Computing for Business Students	3	ARR		Garcia, R.	\$15.00
				Computing for Bus. Students Optional Lab for Sec. 501	W	9:00 - 10:15 AM	V111	Garcia, R.	

CS 150.501 is an online course with an optional lab for personal assistance - please see description at the bottom of this page and general information on online courses on page 18

27399	PZ	CS 150L	502	Computing for Business Students	3	ARR			\$15.00
-------	----	---------	-----	---------------------------------	---	-----	--	--	---------

CS 150.502 is an online course - please see description at the bottom of this page and general information on online courses on page 18

27681	PZ	CS 150L	503	Computing for Business Students	3	TTh	4:30 - 5:45 PM	V111	Castillo, S	\$15.00
-------	----	---------	-----	---------------------------------	---	-----	----------------	------	-------------	---------

27682	PZ	CS 150L	504	Computing for Business Students	3	TTh	1:30 - 3:15 PM	V111	Staff	\$15.00
-------	----	---------	-----	---------------------------------	---	-----	----------------	------	-------	---------

CS 150.504 is a 2nd 8 weeks course - classes begin on Tuesday, March 20 and end on Thursday, May 10

27659	PZ	CS 152L	501	Computer Programming Funda for Comp Sci Majors	3	MW	3:00 - 5:00 PM	V111	Black, T.	\$15.00
-------	----	---------	-----	------------------------------------------------	---	----	----------------	------	-----------	---------

Early Childhood Multicultural Education (ECME)

27403		ECME 101	501	Child Growth, Development & Learning	3	T	4:30 - 7:15 PM	V120	Lawrence, L.	
-------	--	----------	-----	--------------------------------------	---	---	----------------	------	--------------	--

27405		ECME 103	501	Health, Safety and Nutrition	2	Th	4:30 - 6:10 PM	V120	Lawrence, L.	
-------	--	----------	-----	------------------------------	---	----	----------------	------	--------------	--

27788		ECME 111	501	Family and Community Collaboration I	3	TTh	3:00 - 4:15 PM	V129	Lawrence, L.	
-------	--	----------	-----	--------------------------------------	---	-----	----------------	------	--------------	--

27406		ECME 230	501	Professionalism	2	Th	6:15 - 7:55 PM	V120	Lawrence, L.	
-------	--	----------	-----	-----------------	---	----	----------------	------	--------------	--

Earth & Planetary Science (EPS)

22830		EPS 101	501	How the Earth Works An Introduction to Geology	3	MW	9:00 - 10:15 AM	C101	Staff	
-------	--	---------	-----	------------------------------------------------	---	----	-----------------	------	-------	--

EPS 101 meets 3 of the 7 credit hours required for UNM's Core Curriculum in Physical & Natural Sciences

22831		EPS 105L	501	Physical Geology laboratory	1	M	10:30 AM - 12:30 PM	A126	Staff	\$15.00
-------	--	----------	-----	-----------------------------	---	---	---------------------	------	-------	---------

22832		EPS 105L	502	Physical Geology laboratory	1	W	10:30 AM - 12:30 PM	A126	Staff	\$15.00
-------	--	----------	-----	-----------------------------	---	---	---------------------	------	-------	---------

EPS 105L meets 1 of the 7 credit hours required for UNM's Core Curriculum in Physical & Natural Sciences

Economics (ECON)

22833		ECON 105	501	Introductory Macroeconomics	3	TTh	12:00 PM - 1:15 PM	A131	Castillo, S.	
-------	--	----------	-----	-----------------------------	---	-----	--------------------	------	--------------	--

ECON 105 meets 3 of the 6 credit hours required for UNM's Core Curriculum in Social & Behavioral Sciences

22835		ECON 106	501	Introductory Macroeconomics	3	TTh	7:30 - 8:45 PM	V118	Castillo, S.	
-------	--	----------	-----	-----------------------------	---	-----	----------------	------	--------------	--

ECON 106 meets 3 of the 6 credit hours required for UNM's Core Curriculum in Social & Behavioral Sciences

Education (EDUC)

22836	R	EDUC 124	501	T/Intro to Computers for Educators	1	T	1:30 PM - 3:15 PM	V127	Staff	
-------	---	----------	-----	------------------------------------	---	---	-------------------	------	-------	--

EDUC 124.501 is a 1st 8 weeks course - classes begin on Tuesday, January 16 and end on Tuesday, March 6

22838		EDUC 293	501	T/College Success	1	M	11:00 - 11:50 AM	A125	Staff	
-------	--	----------	-----	-------------------	---	---	------------------	------	-------	--

22839		EDUC 293	502	T/College Success	1	T	3:00 - 3:50 PM	A124	Staff	
-------	--	----------	-----	-------------------	---	---	----------------	------	-------	--

22840		EDUC 293	503	T/Career Planning	1	ARR			Staff	
-------	--	----------	-----	-------------------	---	-----	--	--	-------	--

27815		EDUC 293	505	T/Computers as Mindtools	3	ARR			Staff	
-------	--	----------	-----	--------------------------	---	-----	--	--	-------	--

EDUC 293.505 is an online course - please see description at the bottom of this page and general information on online courses on page 18

28132		EDUC 293	509	T/Teaching, Reading in Elementary Schools	3	MW	4:30 - 5:45 PM	A125	Staff	
-------	--	----------	-----	-------------------------------------------	---	----	----------------	------	-------	--

22837		EDUC 183	501	Intro Education in New Mexico	3	TTh	4:30 - 5:45 PM	A140	Conescu, T.	
-------	--	----------	-----	-------------------------------	---	-----	----------------	------	-------------	--

Emergency Medical Services (EMS)

22841	Z	EMS 101	501	EMT Basic	6	MW	5:30 - 9:30 PM	H115	Staff	\$40.00
-------	---	---------	-----	-----------	---	----	----------------	------	-------	---------

27576	Z	EMS 201	501	EMT-I	5	TTh	5:00 - 9:00 PM	H115	Staff	\$40.00
-------	---	---------	-----	-------	---	-----	----------------	------	-------	---------

English (ENGL)

23056	PZ	ENGL 098	501	Basic English	4	MW	10:15 - 11:55 AM	C111	Gillikin, P.	\$5.00
-------	----	----------	-----	---------------	---	----	------------------	------	--------------	--------

ENGL 098 is a developmental studies course required for students whose COMPASS or ACT scores place them at this level

23059	PZ	ENGL 099	502	Developmental English	4	MW	10:15 - 11:55 AM	V117	Staff	\$5.00
-------	----	----------	-----	-----------------------	---	----	------------------	------	-------	--------

ENGL 099 is a developmental studies course required for students whose COMPASS or ACT scores place them at this level

22842	PZ	ENGL 100	501	Writing Standard English	4	MW	8:30 - 10:10 AM	C111	Gillikin, P.	\$5.00
-------	----	----------	-----	--------------------------	---	----	-----------------	------	--------------	--------

22845	RPZ	ENGL 100	504	Writing Standard English	4	TTh	12:00 PM - 1:40 PM	C111	Gillikin, P.	\$5.00
-------	-----	----------	-----	--------------------------	---	-----	--------------------	------	--------------	--------

27710	PZ	ENGL 100	506	Writing Standard English	4	TTh	6:00 - 7:40 PM	HS103	Staff	\$5.00
-------	----	----------	-----	--------------------------	---	-----	----------------	-------	-------	--------

ENGL 100 is a developmental studies course required for students whose COMPASS or ACT scores place them at this level

22846	RP	ENGL 101	501	Composition I: Exposition	3	MW	12:00 PM - 1:15 PM	A140	Candela, G.	
-------	----	----------	-----	---------------------------	---	----	--------------------	------	-------------	--

22847	RP	ENGL 101	502	Composition I: Exposition	3	MW	1:30 PM - 2:45 PM	A141	Staff	
-------	----	----------	-----	---------------------------	---	----	-------------------	------	-------	--

EDUC 293-505 Computers as Mindtools (Online)

EDUC 293, section 505 is an online course with all work done in WebCT. You must have a NetID and need to login to <http://vista.unm.edu> to access the course. There are no classroom sessions with this section. This course examines the use of computers in critical thinking and using technology to build meaningful learning.

CS 150-501 Computing for Business Students (Online with optional lab)

CS 150.501 is an online section of CS 150, Computing for Business Students, with an optional lab on Wednesdays, 9:00a to 10:15a, for students who need personal assistance with their software assignments (Microsoft Office 2003 Professional: Word, Excel, Access, Publisher, and PowerPoint). No textbook purchase is required for this course as all the instructional materials you'll need will be provided for you (free of charge) during the orientation session. For more information about this course, including required orientation sessions (you need only attend one) please visit the following web site: <http://www.unm.edu/~rgarcia/cs150/spring/>.

CS 150-502 Computing for Business Students (Online)

CS 150, section 502 is an online course with all work done in WebCT. You must have a NetID and need to login to <http://vista.unm.edu> to access the course. There are no classroom sessions with this section. This course covers Word, Excel, PowerPoint, Access, and computing basics.

SPRING 2007 COURSES

22848	RP	ENGL 101	503	Composition I: Exposition	3	TTh	9:00 - 10:15 AM	A140	Gustafson, M.
22849	RP	ENGL 101	504	Composition I: Exposition	3	TTh	10:30 - 11:45 AM	A140	Gustafson, M.
22850	RP	ENGL 101	505	Composition I: Exposition	3	TTh	1:30 - 2:45 PM	A127	Candela, G.
22853	RP	ENGL 101	506	Composition I: Exposition	3	S	12:00 PM - 2:45 PM	A127	Staff
22854	RP	ENGL 101	507	Composition I: Exposition	3	MW	4:30 - 5:45 PM	A140	Staff
22855	RP	ENGL 101	508	Composition I: Exposition	3	MW	6:00 - 7:15 PM	A141	Staff
ENGL 101 meets 3 of the 9 credit hours required for UNM's Core Curriculum in Writing & Speaking									
22858	P	ENGL 102	501	Comp. II: Analysis & Argument	3	MW	9:00 - 10:15 AM	A141	Gustafson, M.
22859	P	ENGL 102	502	Comp. II: Analysis & Argument	3	MW	10:30 - 11:45 AM	V105	Huntsinger, J.
22860	P	ENGL 102	503	Comp. II: Analysis & Argument	3	MW	12:00 PM - 1:15 PM	A141	Gustafson, M.
22861	P	ENGL 102	504	Comp. II: Analysis & Argument	3	MW	1:30 PM - 2:45 PM	V105	Huntsinger, J.
22862	P	ENGL 102	505	Comp. II: Analysis & Argument	3	TTh	10:30 - 11:45 AM	V105	Huntsinger, J.
22863	P	ENGL 102	506	Comp. II: Analysis & Argument	3	TTh	4:30 - 5:45 PM	A125	Staff
22864	P	ENGL 102	507	Comp. II: Analysis & Argument	3	TTh	6:00 - 7:15 PM	A125	Staff
27413	P	ENGL 102	508	Comp. II: Analysis & Argument	3	TTh	1:30 - 2:45 PM	A131	Staff
ENGL 102 meets 3 of the 9 credit hours required for UNM's Core Curriculum in Writing & Speaking									
27412	P	ENGL 119	501	Introduction to Technical & Professional Writing (Online)	3	ARR			LeBeau, M.
ENGL 119.501 is an online course - please see description at the bottom of this page and general information on online courses on page 18									
22865		ENGL 150	501	The Study of Literature	3	TTh	12:00 PM - 1:15 PM	A129	Huntsinger, J.
ENGL 150 meets 3 of the 6 credit hours required for UNM's Core Curriculum in Humanities									
27431		ENGL 211	501	T/New Mexico Film/Literature	3	MW	12:00 PM - 1:15 PM	A127	Huntsinger, J.
22866	P	ENGL 219	501	Technical Writing and Professional Writing	3	TTh	12:00 PM - 1:15 PM	V105	LeBeau, M.
22867	P	ENGL 219	502	Technical Writing and Professional Writing	3	TTh	1:30 PM - 2:45 PM	V105	LeBeau, M.
ENGL 219 meets 3 of the 9 credit hours required for UNM's Core Curriculum in Writing & Speaking									
22870		ENGL 298	501	Writing New Mexico	3	MW	1:30 PM - 2:45 PM	A140	Candela, G.
22871	R	GNST 193	501	Writing skills Workshop	1	T	12:00 PM - 1:00 PM	V123a	Candela, G.
GNST 193.501 is a late starting course - classes begin on Tuesday, January 30 1 and end on Tuesday, May 8									
22872	R	GNST 193	502	Writing skills Workshop	1	Th	12:00 PM - 1:00 PM	V123a	Candela, G.
GNST 193.502 is a late starting course - classes begin on Thursday, February 1 and end on Thursday, May 10									
GNST 193.501/502 are workshops for students who were deficient in one or more areas of their writing portfolio									
Health Education (HED)									
27415		HED 171	501	Personal Health Management	3	T	10:30 AM - 1:15 PM	LRC C	Staff
27416		HED 260	501	Health Promotions	3	T	3:00 - 5:45 PM	LRC C	Staff
22874	PZ	HED 293	501	T/Health Education Field Experience	1	ARR			Staff
History (HIST)									
22875		HIST 101	501	Western Civ. Ancient to 1648	3	TTh	9:00 - 10:15 AM	A101	Staff
27421		HIST 101	502	Western Civ. Ancient to 1648	3	TTh	10:30 AM - 1:15 PM	A101	Staff
HIST 101.502 is a 2nd 8 weeks course - classes begin on Tuesday, March 20 and end on Thursday, May 10									
HIST 101 meets 3 of the 6 credit hours required for UNM's Core Curriculum in Humanities									
27433		HIST 102	501	Western Civilization	3	S	9:00 - 11:45 AM	A101	Staff
HIST 102 meets 3 of the 6 credit hours required for UNM's Core Curriculum in Humanities									

HED 171 Personal Health Management

Take charge of the behaviors that affect your personal health. This course explores mental health, drugs, human sexuality, prevention and control of diseases, nutrition, consumer health, and ecology. Gain knowledge on how to achieve, maintain, and promote positive health. What are you waiting for – enroll today!

HED 260 Foundations of Health Promotions – Explore your health behaviors!

Enroll in this course to explore the basic philosophy and fundamental practices currently utilized in health education. This course is designed for those considering becoming health majors or minors in school health or community health but is also beneficial for everyone in learning how to make positive behavioral health changes.

ENGL 298 - Writing New Mexico

English 298-501 (MW-1:30-2:45) will immerse students in the culture, the river valleys, llanos, mesas, and mountains of New Mexico. Through our reading, discussion, and writing exercises, as well as guest presenters, we shall study a few important cultural/historical sites in the state: Bosque del Apache, Chaco Canyon, Lincoln (of Billy the Kid fame), and Tomé, including its famous Hill, El Cerro. Then, students will take Saturday field trips and their journals to these sites. Finally, students will choose among poems, short stories, plays, essays, or other media to produce a creative work based upon each place. English 298 has no prerequisite, though writing experience is recommended. Seniors and other community members are welcomed!

ENGL 119 ONLINE (3 credits)

This class is designed to introduce you to the most basic technical forms of writing that are essential for professional communication today. You will create, edit, and present the following kinds of documents: memos, letters, flyers, brochures, tables, charts, technical descriptions, technical instructions, brief reports, and a PowerPoint presentation. You will take the course entirely online through WebCT, so you will need good Internet access and basic knowledge of computer usage (such as word processing, downloading documents, and sending attachments). You will be submitting a midterm and final portfolio containing revised technical documents that you have previously submitted for critique.

SPRING 2007 COURSES

22876		HIST 161	501	History of U.S. 1607 to 1877	3	TTh	1:30 PM - 2:45 PM	A101	Staff	
22877		HIST 161	502	History of U.S. 1607 to 1877	3	S	12:00 PM - 2:45 PM	A101	Staff	
HIST 161 meets 3 of the 6 credit hours required for UNM's Core Curriculum in Humanities										
22878		HIST 162	501	History of U.S. since 1877	3	MW	1:30 PM - 2:45 PM	C103	Melzer, R.	
27417		HIST 162	502	History of U.S. since 1878	3	MW	7:30 - 8:45 PM	A131	Melzer, R.	
HIST 162 meets 3 of the 6 credit hours required for UNM's Core Curriculum in Humanities										
27419		HIST 220	501	T/New Mexico History since 1912	3	MW	3:00 - 4:15 PM	C103	Melzer, R.	
Information Technology (IT)										
23065	PZ	IT 101	501	Computer FUNdamentals	1	TTh	4:30 - 5:45 PM	V123a	Staff	\$5.00
IT 101.501 is a 1st 5 weeks course - classes begin on Tuesday, January 16 and end on Thursday, February 15										
23510	CZ	IT 101	502	Computer FUNdamentals	1	MW	1:30 PM - 2:45 PM	V123a	Staff	\$5.00
IT 101.502 is a 2nd 5 weeks course - classes begin on Monday, February 19 and end on Wednesday, March 28										
22892	CZ	IT 110	501	Introduction to Publications and Presentations	1	TTh	4:30 - 5:45 PM	V123a	Staff	\$5.00
IT 110.501 is a 2nd 5 weeks course - classes begin on Tuesday, February 20 and end on Thursday, March 29										
22893	CZ	IT 110	502	Introduction to Publications and Presentations	1	MW	1:30 PM - 2:45 AM	V123a	Staff	\$5.00
IT 110.502 is a 3rd 5 weeks course - classes begin on Monday, April 2 and end on Wednesday, May 2										
22894	PZ	IT 121	501	Electronic Spreadsheets	3	TTh	6:00 - 7:15 PM	V111	Castillo, S.	\$15.00
27434	PZ	IT 121	502	Electronic Spreadsheet s	3	ARR			Staff	
IT 121.502 is an online course - please see description at the bottom of this page and general information on online courses on page 18										
22895	PZ	IT 122	501	Introduction to Database Management Systems	3	TTh	1:30 PM - 4:15 PM	V124	Black, T.	\$15.00
IT 122.501 is a 1st 8 weeks course - classes begin on Tuesday, January 16 and end on Thursday, March 8										
22896	PZ	IT 125	501	Microcomputer Operating Systems	3	ARR		V111a	Staff	\$15.00
27435	PZ	IT 131	501	Computer Main Repair	3	ARR		V111a	Staff	\$15.00
24423	RP	IT 140	501	Technical Customer Service	3	ARR			Black, T.	
27422	PZ	IT 222	501	Intermediate Database Management	3	TTh	1:30 PM - 4:15 PM	V124	Black, T.	\$15.00
IT 122.501 is a 2nd 8 weeks course - classes begin on Tuesday, March 20 and end on Thursday, May 10										
27436	RPZ	IT 270	501	Graphics and Animation	3	MW	1:30 PM - 2:45 PM	V107	Ceschiat, M.	\$15.00
22898	RP	IT 290	501	Applications of Information Technology	1	ARR			Black, T.	
22899	RP	IT 295	501	Practicum/Cooperative Education	3	ARR			Black, T.	
Linguistics (LING)										
22534	X	LING 101	501	Intro to the Study of Language	3	TTh	10:30 - 11:45 AM	A133	Staff	
22533	X	ANTH 110	501	Language/Culture/Human Animal	3	TTh	10:30 - 11:45 AM	A133	Staff	
LING 101.501 & ANTH 110.501 are cross-listed										
22730	X	LING 101	502	Intro to the Study of Language	3	TTh	12:00 PM - 1:15 PM	A133	Staff	
22729	X	ANTH 110	502	Language/Culture/Human Animal	3	TTh	12:00 PM - 1:15 PM	A133	Staff	
LING 101.502 & ANTH 110.502 are cross-listed										
LING 101 & ANTH 110 meet 3 of the 6 credit hours required for UNM's Core Curriculum in Social & Behavioral Sciences										
Mathematics & Statistics (MATH & STAT)										
22900	RPZ	MATH 098	501	Developing Numeracy	3	TTh	10:30 - 11:45 AM	V119	Staff	
MATH 098 is a developmental studies course required for students whose COMPASS or ACT scores place them at this level										
23062	RPZ	MATH 099	501	Pre-Algebra	4	MW	2:00 - 3:40 PM	H103	Staff	\$5.00
23064	RPZ	MATH 099	503	Pre-Algebra	4	TTh	10:15 - 11:55 AM	V117	Staff	\$5.00
MATH 099 is a developmental studies course required for students whose COMPASS or ACT scores place them at this level										
22902	RPZ	MATH 100	501	Introductory Algebra	4	MW	10:15 - 11:55 AM	A141	Staff	\$5.00
22904	RPZ	MATH 100	503	Introductory Algebra	4	MW	2:00 - 3:40 PM	V120	Staff	\$5.00
22906	RPZ	MATH 100	505	Introductory Algebra	4	TTh	10:15 - 11:55 AM	C101	DePree, J.	\$5.00
27438	RPZ	MATH 100	507	Introductory Algebra	4	TTh	2:00 - 3:40 PM	C101	Staff	\$5.00
27443	RPZ	MATH 100	508	Introductory Algebra	4	MW	6:00 - 7:40 PM	V119	Staff	\$5.00
MATH 100 is a developmental studies course required for students whose COMPASS or ACT scores place them at this level										
22907	PR	MATH 111	501	Math for Elem/Mid Sch. Teachers I	3	MW	10:30 - 11:45 AM	V119	Staff	
22908	P	MATH 112	501	Math for Elem/Mid Sch. Teachers II	3	Th	4:00 - 6:45 PM	V119	Staff	
22909	PR	MATH 120	501	Intermediate Algebra	3	MW	10:30 - 11:45 AM	A124	Staff	
22910	P	MATH 106	501	Problems in Intermediate Algebra	1	M	9:15 - 10:15 AM	A124	Staff	
Students enrolling in MATH 120.501 are expected to enroll in MATH 106.501										
22911	PR	MATH 120	502	Intermediate Algebra	3	TTh	9:00 - 10:15 AM	A125	Staff	
22914	P	MATH 106	502	Problems in Intermediate Algebra	1	T	10:30 - 11:30 AM	A125	Staff	
Students enrolling in MATH 120.502 are expected to enroll in MATH 106.502										

IT 121-502 Electronic Spreadsheets (Online)

IT121, section 502 is an online course with all work done in WebCT. You must have a NetID and need to login to <http://vista.unm.edu> to access the course. There are no classroom sessions with this section. This is an in-depth practical course using Microsoft Excel.

SPRING 2007 COURSES

22913	PR	MATH 120	503	Intermediate Algebra	3	TTh	10:30 - 11:45 AM	A124	Robinson, M.
22920	P	MATH 106	503	Problems in Intermediate Algebra	1	Th	12:00 PM - 1:00 PM	A124	Robinson, M.
<u>Students enrolling in MATH 120.503 are expected to enroll in MATH 106.503</u>									
22915	PR	MATH 120	504	Intermediate Algebra	3	TTh	12:00 PM - 1:15 PM	A125	Staff
22918	P	MATH 106	504	Problems in Intermediate Algebra	1	Th	10:30 - 11:30 AM	A125	Staff
<u>Students enrolling in MATH 120.504 are expected to enroll in MATH 106.504</u>									
22917	PR	MATH 120	505	Intermediate Algebra	3	TTh	1:30 PM - 2:45 PM	V120	Staff
22916	P	MATH 106	505	Problems in Intermediate Algebra	1	T	3:00 - 4:00 PM	V120	Staff
<u>Students enrolling in MATH 120.505 are expected to enroll in MATH 106.505</u>									
22919	P	MATH 120	506	Intermediate Algebra	3	MW	4:30 - 5:45 PM	V117	Staff
22912	P	MATH 106	506	Problems in Intermediate Algebra	1	M	3:15 - 4:15 PM	V117	Staff
<u>Students enrolling in MATH 120.506 are expected to enroll in MATH 106.506</u>									
22921	P	MATH 120	507	Intermediate Algebra	3	MW	7:30 - 8:45 PM	A125	Staff
27444	P	MATH 106	507	Problems in Intermediate Algebra	1	M	6:15 - 7:15 PM	A125	Staff
<u>Students enrolling in MATH 120.507 are expected to enroll in MATH 106.507</u>									
22943	PR	MATH 121	501	College Algebra	3	MW	9:00 - 10:15 AM	A127	Staff
22944	CP	MATH 107	501	Problems in College Algebra	1	M	10:30 - 11:30 AM	A127	Staff
<u>Students enrolling in MATH 121.501 are expected to enroll in MATH 107.501</u>									
22945	PR	MATH 121	502	College Algebra	3	MW	12:00 PM - 1:15 PM	A129	Staff
22946	CP	MATH 107	502	Problems in College Algebra	1	W	10:30 - 11:30 AM	A129	Staff
<u>Students enrolling in MATH 121.502 are expected to enroll in MATH 107.502</u>									
22947	PR	MATH 121	503	College Algebra	3	TTh	1:30 PM - 2:45 PM	A124	Robinson, M.
22948	P	MATH 107	503	Problems in College Algebra	1	T	12:00 PM - 1:00 PM	A124	Robinson, M.
<u>Students enrolling in MATH 121.503 are expected to enroll in MATH 107.503</u>									
22949	P	MATH 121	504	College Algebra	3	TTh	7:30 - 8:45 PM	A124	Staff
22950	CP	MATH 107	504	Problems in College Algebra	1	T	6:15 - 7:15 PM	A124	Staff
<u>Students enrolling in MATH 121.504 are expected to enroll in MATH 107.504</u>									
<u>MATH 121 meets meets 3 of the 3 credit hours required for UNM's Core Curriculum in Mathematics</u>									
22952	P	MATH 123	501	Trigonometry	3	W	9:00 - 11:45 AM	A125	Robinson, M.
27439	P	MATH 129	501	A Survey of Mathematics	3	TTh	9:00 - 10:15 AM	C101	Staff
<u>MATH 129 meets meets 3 of the 3 credit hours required for UNM's Core Curriculum in Mathematics</u>									
22953	P	MATH 150	501	Pre-Calculus Mathematics	3	MW	1:30 PM - 2:45 PM	A127	Staff
<u>MATH 150 meets meets 3 of the 3 credit hours required for UNM's Core Curriculum in Mathematics</u>									
27440	P	MATH 163	501	Calculus II	4	TTh	3:00 - 4:45 PM	A127	Murray, C.
<u>MATH 163 meets meets 3 of the 3 credit hours required for UNM's Core Curriculum in Mathematics</u>									
22955	P	MATH 180	501	Elements of Calculus I	3	TTh	9:00 - 10:15 AM	V117	Staff
22956	P	MATH 180	502	Elements of Calculus I	3	TTh	6:00 - 7:15 PM	A127	Murray, C.
<u>MATH 180 meets meets 3 of the 3 credit hours required for UNM's Core Curriculum in Mathematics</u>									
27445		MATH 181	501	Elements of Calculus II	3	TTh	4:30 - 5:45 PM	A124	Staff
<u>MATH 181 meets meets 3 of the 3 credit hours required for UNM's Core Curriculum in Mathematics</u>									
22957		MATH 193	501	T/Finding your mathematical voice	1	W	11:00 - 11:50 AM	A131	DePree, J.
27441		MATH 193	502	T/Finding your mathematical voice	1	W	12:15 PM - 1:15 PM	A124	Robinson, M.
22958	P	MATH 215	501	Math for Elem & Mid School Teachers III	3	W	3:00 - 5:45 PM	V119	DePree, J.
<u>MATH 215 meets meets 3 of the 3 credit hours required for UNM's Core Curriculum in Mathematics</u>									
22940	P	STAT 145	501	An Intro to Statistics	3	TTh	10:30 - 11:45 AM	C113	Staff
22941	P	STAT 145	502	An Intro to Statistics	3	S	9:00 - 11:45 AM	H105	Staff
22942	P	STAT 145	503	An Intro to Statistics	3	MW	6:00 - 7:15 PM	H105	Staff
<u>STAT 145 meets meets 3 of the 3 credit hours required for UNM's Core Curriculum in Mathematics</u>									

NUTR 244 Online: Human Nutrition (3)

This course provides an overview of all the nutrients including functions in the body and food sources. Dietary guidelines intended to promote long-term health are emphasized. Prerequisites: BIOL 123/124L or CHEM 111L or CHEM 121L, or the equivalent. A 3-credit hour online course can require approximately 6-9 hours per week for class work, class participation, homework, and the viewing of supplementary videos and/or PowerPoint Presentations. For more information about taking an online course go to: <http://online.unm.edu>

Computer Requirements

- UNM Net ID account and password
- Access to the Internet (ISP); High speed Internet connection is preferable
- 28.8 kps modem (56 kps modem or higher recommended)
- Speakers for listening to presentations
- Current web browser and Java (see the new browser requirements for WebCT Vista at <http://webct.unm.edu>)

Computer Skills

- Knowledge of Windows or Macintosh operating systems
- Ability to use web browser and Internet connection
- Ability to copy, save, and manipulate files in Windows or Mac OS
- Comfortable communicating via writing and e-mails

SPRING 2007 COURSES

Music (MUS)

22922	Z	MUS 139	501	Music Appreciation	3	TTh	6:00 - 7:15 PM	H101	Staff	
MUS 139 meets 3 of the 3 credit hours required for UNM's Core Curriculum in Fine Arts										
22923		MUS 143	501	University Chorus	1	Th	7:30 - 9:00 PM	A101	Staff	
27446		MUS 271	501	Music Today	3	TTh	4:30 - 5:45 PM	A101	Staff	

Natural Science (NTSC)

27447	P	NTSC 261L	501	Physical Science	4	MW	4:30 - 6:30 PM	H108	Staff	
NTSC 261L meets 4 of the 7 credit hours required for UNM's Core Curriculum in Physical & Natural Sciences										
27448	P	NTSC 262L	501	Life Science	4	MW	6:30 - 8:30 PM	H108	Staff	
NTSC 262L meets 4 of the 7 credit hours required for UNM's Core Curriculum in Physical & Natural Sciences										

Nursing (NURS)

27449	P	NURS 239	501	Human Physiologic Function & Disease I	3	TTh	9:00 - 10:15 AM	H108	Chavez, M.	
-------	---	----------	-----	----------------------------------------	---	-----	-----------------	------	------------	--

Nutrition (NUTR)

22927	P	NUTR 244	501	Human Nutrition	3	MW	9:00 - 10:15 AM	A124	Staff	
24853	P	NUTR 244	502	Human Nutrition (Online)	3	ARR			Staff	
NUTR 244.502 is an online course - please see description at the bottom of page 13 and general information on online courses on page 18										

Office & Business Technology (OBT)

22961		OBT 105	501	Basic Keyboarding	1	MW	1:30 PM - 2:45 PM	V127	Cole, D.	\$5.00
OBT 105.501 is a 1st 5 weeks course - classes begin on Monday, January 15 and end on Wednesday, February 14										
27797		OBT 105	502	Basic Keyboarding (Online)	1	ARR		V127	Chavez, C.	\$5.00
OBT 105.502 is an online course - please see description at the bottom of this page and general information on online courses on page 18										
22963	Z	OBT 111	501	Keyboarding/Word Processing I	3	MW	1:30 PM - 2:45 PM	V127	Cole, D.	\$15.00
22964	Z	OBT 111	502	Keyboarding/Word Processing I	3	M	6:00 - 8:45 PM	V127	Cole, D.	\$15.00
22968	APZ	OBT 112	501	Keyboarding/Word Processing II	3	M	12:00 PM - 1:15 PM	V127	Cole, D.	\$15.00
OBT 112.501 is a hybrid course (part online) - please see description at the bottom of this page and general information on online courses on page 18										
22969	APZ	OBT 112	502	Keyboarding/Word Processing II	3	M	6:00 - 8:45 PM	V127	Cole, D.	\$15.00
27454	APZ	OBT 205	501	Business Math/Electronic Calculators	3	MW	4:30 - 5:45 PM	V127	Cole, D.	\$15.00
22970	APZ	OBT 219	501	Legal Terminology/Transcription	3	M	12:00 PM - 1:15 PM	V127	Cole, D.	\$15.00
OBT 219.501 is a hybrid course (part online) - please see description at the bottom of this page and general information on online courses on page 18										
22971	APZ	OBT 219	502	Legal Terminology/Transcription	3	M	6:00 - 8:45 PM	V127	Cole, D.	\$15.00
22972	APZ	OBT 221	501	Medical Transcription	3	M	12:00 PM - 1:15 PM	V127	Cole, D.	\$15.00
OBT 221.501 is a hybrid course (part online) - please see description at the bottom of this page and general information on online courses on page 18										
22973	APZ	OBT 221	502	Medical Transcription	3	M	6:00 - 8:45 PM	V127	Cole, D.	\$15.00
27450	Z	OBT 235	501	Records Management	3	MW	3:00 - 4:15 PM	V127	Cole, D.	\$15.00
27451	PZ	OBT 257	501	Administrative Procedures	3	MW	9:00 - 10:15 AM	V127	Chavez, C.	\$15.00

OBT 105 - Basic Keyboarding (Online)

OBT 105 is for students with little to no keyboarding experience. This course will teach students proper techniques using the alpha-numeric keyboard such as hand alignment, keystrokes as well as help students improve and increase keyboarding speed. There will be one mandatory meeting at the beginning of the semester.

OBT 112 - Keyboarding/Word Processing (Hybrid)

Students who have previously taken OBT 111 will benefit from continuing their instruction with OBT 112. Students will format business letters and forms, manuscripts and resumes as well as continue to increase their typing speed. Students will meet in class one day a week and continue lessons online.

OBT 219 - Legal Terminology/Transcription (Hybrid)

Are you interested in a career in political affairs, government or law? If so, OBT 219 will open many doors in these fields. Students will meet in class one day a week and will continue their studies online. This course emphasizes legal terminology and the preparation and transcription of legal documents. Prerequisite: OBT 112 and ENGL 100.

OBT 221 - Medical Transcription (Hybrid)

Students interested in careers in the medical field will find OBT 221 a resourceful course that will expand their knowledge in the ever growing field of medicine. Students will learn to transcribe various medical reports that include patient histories and physicals, pre-op, lab reports, operating reports and the like. Students will meet in class one day a week and will continue their studies online. Prerequisite: OBT 112 and ENGL 100.

OBT 257 - Administrative Procedures

Administrative support personnel are indispensable to today's businesses. Learn valuable employment skills that will earn you the recognition you deserve. OBT 257 will train you in organization and time management, records management, information and communications, meeting and travel planning, and much-much more. Become an IAAP (International Association of Administrative Professionals) member and obtain your CAP (Certified Administrative Professional), OPAC (Office Proficiency Assessment Certification), or MOS (Microsoft Office Specialist) certification that employers recognize and reward.

OBT 260-Desktop Publishing and Presentation

This course is being offered as a hybrid course which means it is offered half in class and half online through WEB-CT. Please see page 18 of this publication for a more in-depth definition of a hybrid course. OBT 260 takes basic computer skills to a new level giving the student hands-on experience with software programs such as Publisher and Power Point. Create eye-catching brochures and flyers, produce an awe-inspiring presentation, publish a personalized newsletter, or create an amazing advertisement poster. You will also learn how to use industry standard equipment for creating, producing, and printing your creations.

SPRING 2007 COURSES

27452	PZ	OBT 260	501	Desktop Publishing and Presentation	3	M	12:00 PM - 1:15 PM	V105	Chavez, C.	\$15.00
OBT 260.501 is a hybrid course (part online) - please see description at the bottom of page 14 and general information on online courses on page 18										
22974	PZ	OBT 263	501	Preparation for Microsoft Word Certification	3	M	12:00 PM - 1:15 PM	V127	Cole, D.	\$15.00
OBT 263.501 is a hybrid course (part online) - please see description at the bottom of this page and general information on online courses on page 18										
22975	PZ	OBT 263	502	Preparation for Microsoft Word Certification	3	M	6:00 - 8:45 PM	V127	Cole, D.	\$15.00
27453	PZ	OBT 265	501	Business Communications	3	W	12:00 PM - 1:15 PM	V124	Chavez, C.	\$15.00
OBT 265.501 is a hybrid course (part online) - please see description at the bottom of this page and general information on online courses on page 18										
22976	PZ	OBT 293	501	T/Adv. Prep for Microsoft Word Certification	3	M	12:00 PM - 1:15 PM	V127	Cole, D.	\$15.00
OBT 293.501 is a hybrid course (part online) - please see description at the bottom of this page and general information on online courses on page 18										
22977	Z	OBT 293	502	T/MS Word 2003	3	M	12:00 PM - 1:15 PM	V127	Cole, D.	\$15.00
22978	PZ	OBT 293	503	T/Adv. Prep for Microsoft Word Certification	3	M	6:00 - 8:45 PM	V127	Cole, D.	\$15.00
22981	Z	OBT 293	504	T/MS Word 2003	3	M	6:00 - 8:45 PM	V127	Cole, D.	\$15.00
22982	RP	OBT 295	501	Practicum/Cooperative Education	3	ARR			Cole, D.	
Personal Care Attendant (PCA)										
00000	Z	PCA 101	501	Personal Care Attendant	5	MW	9:00 AM - 1:00 PM	H115	Staff	\$40.00
PCA 101.501 is a late-starting 9 weeks course - classes begin on Monday, February 12 and end on Wednesday, April 18										
Pharmacy Technician (PHRT)										
27455	PZ	PHRT 122	501	Pharmacy Technician Lab II	2	M	11:00 AM - 12:00 PM	H110	Garcia, L.	\$30.00
				Pharmacy Technician Lab II	2	W	8:00 AM - 12:00 PM	H110	Garcia, L.	
27683	P	PHRT 123	501	Pharmacy Technician Practicum I	4	ARR			Garcia, L.	
27684	P	PHRT 124	501	Advanced Pharmacy Technology	3	M	8:00 - 11:00 AM	H110	Garcia, L.	
PHRT 124.501 is a 1st 7 weeks course - classes begin on Monday, January 15 and end on Monday, February 26										
27685	P	PHRT 125	501	Pharmacology for Pharmacy Technicians	3	M	8:00 - 11:00 AM	H110	Garcia, L.	
PHRT 125.501 is a 2nd 7 weeks course - classes begin on Monday, March 5th and end on Monday, April 23rd										
Philosophy (PHIL)										
22928		PHIL 101	501	Intro to Philosophical Problems	3	TTh	12:00 PM - 1:15 PM	C103	Staff	
PHIL 101 meets 3 of the 6 credit hours required for UNM's Core Curriculum in Humanities										
27456		PHIL 280	501	Philosophy and Literature	3	MW	12:00 PM - 1:15 PM	H101	Conescu, J.	
Physical Education (PENP)										
27802	Z	PENP 124	501	Beginning Ballroom Dancing	1	T	6:00 - 8:00 PM	S104	Staff	\$10.00
PENP 124.501 is a 1st 8 weeks course - classes begin on Tuesday, January 16 and end on Tuesday, March 6										
23038	PZ	PENP 125	501	Intermediate Ballroom Dance	1	T	6:00 - 8:00 PM	S104	Staff	\$10.00
PENP 125.501 is a 2nd 8 weeks course - classes begin on Tuesday, March 20 and end on Tuesday, May 8										
27457	Z	PENP 129	501	Intermediate Country Western Dance	1	Th	6:00 - 8:00 PM	S104	Staff	\$10.00
PENP 129.501 is a 1st 8 weeks course - classes begin on Thursday, January 16 and end on Thursday, March 8										
22989	Z	PENP 136	501	T/Personal Defense	1	MW	3:00 - 4:15 PM	S140	Staff	\$10.00
PENP 136.501 is a 2nd 8 weeks course - classes begin on Monday, March 19 and end on Wednesday, May 9										
22990	Z	PENP 138	501	Karate	1	TTh	1:30 PM - 2:45 PM	S140	Staff	\$10.00
PENP 138.501 is a 2nd 8 weeks course - classes begin on Tuesday, March 20 and end on Thursday, May 10										
27463	Z	PENP 141	501	Intermediate Golf (details at the bottom of this page)	1	W	4:30 - 7:00 PM	off camp	Staff	\$55.00
PENP 141.501 is a 2nd 8 weeks course - classes begin on Wednesday, March 21 and end on Wednesday, May 9										
22992	Z	PENP 158	501	Aerobic Dance I	1	MW	12:00 PM - 1:15 PM	S140	Karnes-Padilla, D.	\$10.00
PENP 158.501 is a 1st 8 weeks course - classes begin on Monday, January 15 and end on Wednesday, March 7										
22994	PZ	PENP 159	501	Aerobic Dance II	1	MW	12:00 PM - 1:15 PM	S140	Karnes-Padilla, D.	\$10.00
PENP 159.501 is a 2nd 8 weeks course - classes begin on Monday, March 19 and end on Wednesday, May 9										
22995	Z	PENP 160	501	Weight Training & Physical Conditioning	1	MW	10:30 - 11:45 AM	S133	Karnes-Padilla, D.	\$10.00
PENP 160.501 is a 1st 8 weeks course - classes begin on Monday, January 15 and end on Wednesday, March 7										
22997	Z	PENP 163	501	Intermediate Weight Training	1	MW	10:30 - 11:45 AM	S133	Karnes-Padilla, D.	\$10.00
PENP 163.501 is a 2nd 8 weeks course - classes begin on Monday, March 19 and end on Wednesday, May 9										

OBT 263 - Preparation for Microsoft Word Certification (Hybrid)

Students wishing to obtain Microsoft Word Certification will benefit in taking this preparation course as they will refine their word processing skills and be able to apply them to more advanced operations. Students will meet in class one day a week and will continue their lessons online.

OBT 265- Business Communications (Hybrid)

This course is being offered as a hybrid course which means it is offered half in class and half online through WEB-CT. Please see page 18 of this publication for a more in-depth definition of a hybrid course. This course will prepare students to excel in today's digital workplace. Students will learn how to communicate effectively through business correspondence such as email, letter writing, business proposals, oral presentations, etc. Students will also develop sensitivity to communication with a diverse workforce.

OBT 293 - Advanced Preparation for Microsoft Word Certification

Students taking OBT 293-Advance Word Prep will continue to learn advanced operations in Microsoft Word which will help prepare them for the Microsoft Word Certification Exam.

SPRING 2007 COURSES

22998	Z	PENP 165	501	Beginning Yoga	1	MW	5:30 - 7:00 PM	S140	Staff	\$10.00
PENP 165.501 is a 1st 8 weeks course - classes begin on Monday, January 15 and end on Wednesday, March 7										
22999	PZ	PENP 166	501	Intermediate Yoga	1	MW	5:30 - 7:00 PM	S140	Staff	\$10.00
PENP 166.501 is a 2nd 8 weeks course - classes begin on Monday, March 19 and end on Wednesday, May 9										
23000	PZ	PENP 193	501	T/Intro/Fitness Mandatory Orientation	1	ARR		S133	Karnes-Padilla, D.	\$10.00
23001	PZ	PENP 193	502	T/Intro/Fitness Mandatory Orientation	1	ARR		S133	Karnes-Padilla, D.	\$10.00
23002	PZ	PENP 193	503	T/Intro/Fitness Mandatory Orientation	1	ARR		S133	Karnes-Padilla, D.	\$10.00
PENP 193.501-3 require a mandatory orientation session - please check in at the FWEC when classes start										
23003	Z	PENP 193	505	Qigong	1	TTh	1:30 PM - 2:45 PM	S140	Staff	\$10.00
PENP 193.505 is a 1st 8 weeks course - classes begin on Tuesday, January 16 and end on Thursday, March 8										
23004	Z	PENP 193	506	T/Tai Chi I	1	MW	1:30 PM - 2:45 PM	S140	Staff	\$10.00
PENP 193.506 is a 1st 8 weeks course - classes begin on Monday, January 15 and end on Wednesday, March 7										
23005		PENP 193	507	T/Tai Chi II	1	MW	3:00 - 4:15 PM	S140	Staff	\$10.00
PENP 193.507 is a 1st 8 weeks course - classes begin on Monday, January 15 and end on Wednesday, March 7										
23006	Z	PENP 193	508	T/Abdominal & Back Strength	1	TTh	12:00 PM - 1:15 PM	S140	Karnes-Padilla, D.	\$10.00
PENP 193.508 is a 1st 8 weeks course - classes begin on Tuesday, January 16 and end on Thursday, March 8										
23007		PENP 193	509	Wellness for the Body, Mind & Spirit	1	TTh	3:00 - 4:15 PM	S140	Staff	\$10.00
PENP 193.509 is a 1st 8 weeks course - classes begin on Tuesday, January 16 and end on Thursday, March 8										
23008	Z	PENP 193	510	T/Beginning Pilates I	1	TTh	4:30 - 5:45 PM	S140	Staff	\$10.00
PENP 193.510 is a 1st 8 weeks course - classes begin on Tuesday, January 16 and end on Thursday, March 8										
23009		PENP 193	511	Middle Eastern Belly Dance I	1	T	6:00 - 8:30 PM	S140	Staff	\$10.00
PENP 193.511 is a 1st 8 weeks course - classes begin on Tuesday, January 16 and end on Tuesday, March 6										
27458	Z	PENP 193	512	Salsa Dancing I	1	W	6:00 - 8:00 PM	S111	Staff	\$10.00
PENP 193.512 is a 1st 8 weeks course - classes begin on Wednesday, January 17 and end on Wednesday, March 7										
27459	Z	PENP 193	513	Beginning Bowling (details at the bottom of this page)	1	W	4:30 - 7:00 PM	off camp	Staff	\$50.00
PENP 193.513 is a 1st 8 weeks course - classes begin on Wednesday, January 17 and end on Wednesday, March 7										
27460	PZ	PENP 193	514	T/Tai Chi II	1	MW	1:30 PM - 2:45 PM	S140	Staff	\$10.00
PENP 193.514 is a 2nd 8 weeks course - classes begin on Monday, March 19 and end on Wednesday, May 9										
27461	Z	PENP 193	515	T/Walking with Poles & Pedometers	1	TTh	12:00 PM - 1:15 PM	S140	Karnes-Padilla, D.	\$10.00
PENP 193.515 is a 2nd 8 weeks course - classes begin on Tuesday, March 20 and end on Thursday, May 10										
27464	PZ	PENP 193	516	T/Intermediate Pilates II	1	TTh	4:30 - 5:45 PM	S140	Staff	\$10.00
PENP 193.516 is a 2nd 8 weeks course - classes begin on Tuesday, March 20 and end on Thursday, May 10										

PENP 124 Beginning Ballroom Dancing, 1st 8 weeks & PE- NP 125 Intermediate Ballroom Dancing, 2nd 8 weeks

Enroll in this 8 week course to learn the basic movements of social dances such as the Foxtrot, Waltz, Swing, Samba, Tango, and Rumba. This ballroom-dance sequence covers a range of contemporary social or ballroom dancing in the Western culture. You will learn to move with style and grace!

PENP 129 Intermediate Country Western Dancing, 1st 8 weeks – calling all jeans, boots, and hats!

Enroll in this course and receive instruction to fine tune your skills on the dance floor dancing the Waltz, Two-step, Swing, and Polka. This course will teach you how to move around the dance floor with ease!

PENP 136 Personal Defense, 2nd 8 weeks - the power of deflection!

Feel comfortable in your own space. Enroll in this course to learn evasion, blocking, stunning, countering, and final measures that are the five levels of personal defense. Learn how to defend and protect yourself with verbal and nonverbal techniques.

PENP 138 Karate, 2nd 8 weeks – discipline of the body, mind, and spirit!

Enroll in this course to learn the basic blocks, strikes and kicks of Japanese karate.

PENP 141 Intermediate Golf – swing into spring!

Enroll in this course to improve your skills with instruction that emphasizes actual play. You'll be in the swing in no time!

PENP 158 Aerobic Dance I, 1st 8 weeks & PENP 159 Aerobic Dance II, 2nd 8 weeks

Enroll to receive instruction in continuous movement using basic dance steps for improved cardio respiratory endurance. PE-NP 158 or PE-NP 159 is a core requirement for the associate of science in health education degree and the group fitness leadership certificate.

PENP 160 Weight Training & Physical Conditioning, 1st 8 weeks & PE-NP 163 Intermediate Weight Training , 2nd 8 weeks

Enroll and learn how to construct an individual training program for development of general strength, tone, endurance, and weight control. P E-NP 160 is a core requirement for the associate of science in health education degree and the group fitness leadership certificate.

PENP 165 Beginning Yoga, 1st 8 weeks & PENP 166 Intermediate Yoga , 2nd 8 weeks

This course will introduce the five areas of yoga that are particularly significant in the Western World. P E-NP 163 is a core requirement for the associate of science in health education and the group fitness leadership certificate. Beginning yoga is a prerequisite for intermediate yoga.

PENP 193 001,002,003: Introduction to Fitness

There is no time like the present to begin a consistent exercise program arranged around your schedule in a clean, fun, and friendly environment. Improve your cardiovascular endurance and muscle strength with on a variety of equipment in the Fitness and Wellness Education Center. A mandatory orientation is required for all students enrolled in this class.

SPRING 2007 COURSES

27465	PZ	PENP 193	517	Middle Eastern Belly Dancing II	1	TTh	6:00 - 7:15 PM	S140	Staff	\$10.00
PENP 193.517 is a 2nd 8 weeks course - classes begin on Tuesday, March 20 and end on Thursday, May 10										
27466	Z	PENP 193	518	T/Salsa Dancing II	1	W	6:00 - 8:00 PM	S111	Staff	\$10.00
PENP 193.518 is a 2nd 8 weeks course - classes begin on Wednesday, March 21 and end on Wednesday, May 9										
Physics (PHYS)										
27467	P	PHYS 152	501	General Physics	3	MW	1:30 PM - 2:45 PM	A125	Murray, C.	
PHYS 152 meets 3 of the 7 credit hours required for UNM's Core Curriculum in Physical & Natural Sciences										
27468	PZ	PHYS 152L	501	General Physics Lab	1	M	3:00 - 5:45 PM	A126	Murray, C.	\$25.00
PHYS 152L meets 1 of the 7 credit hours required for UNM's Core Curriculum in Physical & Natural Sciences										
Political Science (POLS)										
22932		POLS 110	501	The Political World	3	TTh	6:00 - 7:15 PM	A131	Pope, J.	
POLS 110 meets 3 of the 6 credit hours required for UNM's Core Curriculum in Social & Behavioral Sciences										
27469		POLS 200	501	American Politics	3	MW	6:00 - 7:15 PM	A131	Melzer, R.	
27470		POLS 200	502	American Politics	3	TTh	1:30 PM - 4:15 PM	H101	Melzer, R.	
POLS 200.502 is a 1st 8 weeks course - classes begin on Monday, January 15 and end on Wednesday, March 7										
POLS 200 meets 3 of the 6 credit hours required for UNM's Core Curriculum in Social & Behavioral Sciences										
Psychology (PSY)										
22933		PSY 105	501	General Psychology	3	TTh	9:00 - 10:15 AM	A131	Staff	
22934		PSY 105	502	General Psychology	3	TTh	3:00 - 4:15 PM	A131	Staff	
22935		PSY 105	503	General Psychology	3	S	12:00 PM - 2:45 PM	A131	Staff	
22936		PSY 105	504	General Psychology	3	ARR			Staff	
PSY 105.504 is an online course - please see description at the bottom of this page and general information on online courses on page 18										
22937		PSY 105	505	General Psychology	3	MW	6:00 - 7:15 PM	A131	Staff	
22938		PSY 105	506	General Psychology	3	MW	3:00 - 5:45 PM	A131	Staff	
PSY 105.506 is a 2nd 8 weeks course - classes begin on Monday, March 19 and end on Wednesday, May 9										
PSY 105 meets 3 of the 6 credit hours required for UNM's Core Curriculum in Social & Behavioral Sciences										
27471	P	PSY 271	501	Social Psychology	3	TTh	10:30 - 11:45 AM	A131	Staff	
Religious Studies (RELG)										
22528		RELG 107	501	Living World Religions	3	TTh	1:30 PM - 2:45 PM	C103	Conescu, J.	
RELG 107 meets 3 of the 6 credit hours required for UNM's Core Curriculum in Humanities										

PENP 193 Tai Chi I – 1st 8 weeks – balance, focus, and grace!

Enroll in Tai Chi I and II and reap the benefits of the Chinese martial art – Tai Chi Chuan! Tai Chi is a centuries old Chinese martial art form that can improve your health and ability to relax, focus on the present and improve balance. Tai Chi I is a prerequisite for Tai Chi II.

PENP 193 Pilates I, 1st 8 weeks & PENP 193 Pilates II, 2nd 8 weeks - create stability in your body!

Enroll and discover the form of exercise that was inspired by Joseph Pilates! This course will focus on improving body strength, muscular balance, and core stabilizers. Pilates I is a prerequisite for Pilates II.

PENP 193 Salsa Dancing I, 1st 8 weeks & PENP 193 Salsa Dancing II, 2nd 8 weeks – caliente!

Enroll in this course to learn the Latin dance techniques involved in taking this form of dancing from the classroom to the dance floor.

PENP 193 Bowling, 1st 8 weeks – Keep it out of the gutter!

Instruction in basic bowling techniques, rules, and strategies are taught in this course. Your fee paid to the bowling alley includes bowling shoes provided at the bowling alley.

PENP 193 Middle Eastern Belly Dancing I, 1st 8 weeks & PENP 193 Middle Eastern Belly Dancing II, 2nd 8 weeks – hips get moving!

Come and learn the Ancient Art of Belly Dancing! This beginning course will include the basic fundamentals of executing dance steps with accuracy, flexibility, grace, poise, and smooth transitions. Middle Eastern Belly Dancing I is a prerequisite for Middle Eastern Belly Dancing II.

PENP 193 Abdominal and Back Strengthening, 1st 8 weeks – strong abs and back = injury prevention!

Are your back and abdominal muscles your weakest link? Stronger abdominal and back muscles are the foundation of performing movements required for daily living tasks and preventing injuries. This class will teach you how to train your midsection and how to prevent injuries.

PENP 193 Poles & Pedometers, 2nd 8 weeks – burn extra calories!

This course will teach you how to walk with poles and utilize a pedometer to improve your fitness level and motivate you to get moving for improved health.

PENP 193 Qigong, 1st 8 weeks – chi = breath = life!

Students will gain a working knowledge of the principles of Qigong movements, breath awareness, and relaxation techniques to energize and decrease stress in the body.

PENP 193 Wellness for the Body, Mind & Spirit, 1st 8 weeks – The sum of parts = the whole person!

This course will teach the importance of integrating the six dimensions of wellness into the whole person to improve one's health and well-being. Breath and movement practices from oriental healing arts, active relaxation, and awareness techniques will be utilized. Writing, imagery, music, voice, and movement are activities used in this course to enhance wellness. Students pursuing nursing, medicine, health, counseling, social work, business, education, business, exercise science, or fine art fields of study could benefit from this course.

SPRING 2007 COURSES

Sign Language (SIGN)

22526		SIGN 201	501	Intro to Signed Language	3	MW	4:30 - 5:45 PM	A124	Staff	
22527		SIGN 201	502	Intro to Signed Language	3	TTh	3:00 - 4:15 PM	C103	Staff	

SIGN 201 meets 3 of the 3 credit hours required for UNM's Core Curriculum in Second Language

Sociology (SOC)

22108		SOC 101	501	Intro to Sociology	3	MW	9:00 - 10:15 AM	C103	Staff	
22106		SOC 101	502	Intro to Sociology	3	TTh	10:30 - 11:45 AM	C103	Staff	
22109		SOC 101	503	Intro to Sociology	3	S	9:00 - 11:45 AM	A131	Staff	
27828		SOC 101	504	Intro to Sociology	3	TTh	6:00 - 7:15 PM	H101	Staff	
27473		SOC 101	505	Intro to Sociology	3	TTh	1:30 PM - 4:15 PM	A127	Staff	

SOC 101.505 is a 2nd 8 weeks course - classes begin on Tuesday, March 20 and end on Thursday, May 10

SOC 101 meets 3 of the 6 credit hours required for UNM's Core Curriculum in Social & Behavioral Sciences

27472	P	SOC 216	501	Dynamics of Prejudice	3	TTh	7:30 - 8:45 PM	A133	Staff	
-------	---	---------	-----	-----------------------	---	-----	----------------	------	-------	--

Spanish (SPAN)

22118	L	SPAN 101	501	Elementary Spanish	3	MW	9:00 - 10:15 AM	A127	Staff	
22506	CZ	SPAN 103	501	Elem. Spanish Conversation Lab I	1	ARR			Staff	\$5.00
22119	L	SPAN 101	502	Elementary Spanish	3	MW	10:30 - 11:45 AM	A127	Staff	
22509	CZ	SPAN 103	502	Elem. Spanish Conversation Lab I	1	ARR			Staff	\$5.00
22120	L	SPAN 101	503	Elementary Spanish	3	S	9:00 - 11:45 AM	A127	Staff	
22510	CZ	SPAN 103	503	Elem. Spanish Conversation Lab I	1	ARR			Staff	\$5.00
22125	LZ	SPAN 101	504	Elementary Spanish	3	MW	6:00 - 7:15 PM	A127	Staff	
22515	CZ	SPAN 103	504	Elem. Spanish Conversation Lab I	1	ARR			Staff	\$5.00
22122		SPAN 101	505	Conversational Spanish	1	TTh	1:30 PM - 4:15 PM	A124	Staff	

SPAN 101.505 is a 2nd 8 weeks course - classes begin on Tuesday, March 20 and end on Thursday, May 10

SPAN 101 meets 3 of the 3 credit hours required for UNM's Core Curriculum in Second Language

22511	CZ	SPAN 103	505	Elem. Spanish Conversation Lab I	1	ARR			Staff	\$5.00
27474	L	SPAN 102	501	Elementary Spanish	3	MW	4:30 - 5:45 PM	A127	Staff	
27475	CZ	SPAN 104	501	Elem. Spanish Conversation Lab I	1	ARR			Staff	\$5.00

SPAN 102 meets 3 of the 3 credit hours required for UNM's Core Curriculum in Second Language

Online and Hybrid Courses

Online courses are delivered exclusively through the web; hybrid courses require that students attend classes half of the time and access much of the material online. These courses are designed to give you the flexibility and convenience you need to help you meet your educational goals. But before you consider enrolling in an online or hybrid course you should be aware that a good degree of initiative, discipline, diligence, and organization is required on your part to successfully complete the course. Unfortunately, many students are lured by the false notion that this is "easy street"—and end up failing the course! If you choose to enroll in an online course, please visit the following web site: <http://vista.unm.edu> on or after the first day of class to communicate with your instructor and get access to your course syllabus. **Computer Requirements:** UNM Net ID account and password; Access to the Internet (ISP)- High speed Internet connection is preferable; 28.8 kps modem (56 kps modem or higher recommended); Speakers for listening to presentations; Current web browser and Java (see the new browser requirements for WebCT Vista at <http://webct.unm.edu>). **Computer Skills:** Knowledge of Windows or Macintosh operating systems; Ability to use web browser and Internet connection; Ability to copy, save, and manipulate files in Windows or Mac OS; Comfortable communicating via writing and e-mails. **Note:** These basic skills are covered in the optional lab portion of Sec. 501 of CS 150.

CRN	FN	Course	Sec.	Course Title	CH	Days	Time	Room	Instructor	Fees
The following courses will be delivered online during the 2007 spring semester:										
22806		CADT 293	502	T/Intro to Architectural Desktop	4	ARR			Staff	
	PZ	CS 150L	501	Computing for Business Students	3	ARR			Garcia, R.	\$15.00
	PZ	CS 150L	502	Computing for Business Students Optional Lab for Sec. 501	3	ARR	9:00 - 10:15 AM	V111	Garcia, R.	\$15.00
27815		EDUC 293	505	T/Computers as Mindtools	3	ARR			Staff	
27412	P	ENGL 119	501	Introduction to Technical & Professional Writing	3	ARR			LeBeau, M.	
22896	PZ	IT 121	502	Electronic Spreadsheet	3	ARR			Staff	
24853	P	NUTR 244	502	Human Nutrition	3	ARR			Staff	
22936		PSY 105	504	General Psychology	3	ARR			Staff	
23515		OBT 105	502	Basic Keyboarding	1	ARR		V127	Chavez, C.	\$5.00
The following will be delivered as hybrid courses during the 2007 spring semester:										
22968	APZ	OBT 112	501	Keyboarding/Word Processing II	3	M	12:00 PM - 1:15 PM	V127	Cole, D.	\$15.00
22970	APZ	OBT 219	501	Legal Terminology/Transcription	3	M	12:00 PM - 1:15 PM	V127	Cole, D.	\$15.00
22972	APZ	OBT 221	501	Medical Transcription	3	M	12:00 PM - 1:15 PM	V127	Cole, D.	\$15.00
27452	PZ	OBT 260	501	Desktop Publishing and Presentation	3	M	12:00 PM - 1:15 PM	V105	Chavez, C.	\$15.00
22974	PZ	OBT 263	501	Preparation for Microsoft Word Certification	3	M	12:00 PM - 1:15 PM	V127	Cole, D.	\$15.00
27453	PZ	OBT 265	501	Business Communications	3	W	12:00 PM - 1:15 PM	V124	Chavez, C.	\$15.00
22976	PZ	OBT 293	501	T/Adv. Prep for Microsoft Word Certification	3	M	12:00 PM - 1:15 PM	V127	Cole, D.	\$15.00

SPRING 2007 COURSES

Late Starting Courses

Missed out registering for classes at the start of the semester? Dropped a course and need to pick up another before the end of the semester? Then the following late starting courses help will meet your needs (unless otherwise specified, these classes start on the week of March 19, right after spring break):

27388	Z	CNA 101	502	Certified Nursing Assistant (3/5 - 4/27)	8	MW	9:00 AM - 1:00 PM	H115	Staff	\$40.00
				Certified Nursing Assistant		F	8:00 AM - 4:00 PM	H115	Staff	
27395		CJ 130	505	Public Speaking	3	TTh	1:30 PM - 4:15 PM	A140	Staff	
	PZ	CS 150	504	Computing for Business Students	3	TTh	1:30 - 3:15 PM	V111	Staff	\$15.00
27421		HIST 101	502	Western Civ. Ancient to 1648	3	TTh	10:30 AM - 1:15 PM	S200	Staff	
23510	CZ	IT 101	502	Computer FUNDamentals (2/19 - 3/28)	1	MW	1:30 PM - 2:45 PM	V123a	Staff	\$5.00
22892	CZ	IT 110	501	Intro. to Publications and Presentations (2/20 - 3/29)	1	TTh	4:30 - 5:45 PM	V123a	Staff	\$5.00
22893	CZ	IT 110	502	Intro. to Publications and Presentations (4/2 - 5/3)	1	MW	1:30 PM - 2:45 AM	V123a	Staff	\$5.00
27422	PZ	IT 222	501	Intermediate Database Management	3	TTh	1:30 PM - 4:15 PM	V124	Black, T.	\$15.00
00000	Z	PCA 101	501	Personal Care Assistant (2/12 - 4/18)	5	MW	9:00 AM - 1:00 PM	H115	Staff	\$40.00
23038	PZ	PENP 125	501	Intermediate Ballroom Dance	1	T	6:00 - 8:00 PM	S104	Staff	\$10.00
22989	Z	PENP 136	501	T/Personal Defense	1	MW	3:00 - 4:15 PM	S140	Staff	\$10.00
22990	Z	PENP 138	501	Karate	1	TTh	1:30 PM - 2:45 PM	S140	Staff	\$10.00
27463	Z	PENP 141	501	Intermediate Golf	1	W	4:30 - 7:00 PM	off camp	Staff	\$55.00
	PZ	PENP 159	501	Aerobic Dance II	1	MW	12:00 PM - 1:15 PM	S140	Karnes-Padilla, D.	\$10.00
22997	Z	PENP 163	501	Intermediate Weight Training	1	MW	10:30 - 11:45 AM	S133	Karnes-Padilla, D.	\$10.00
22999	PZ	PENP 166	501	Intermediate Yoga	1	MW	5:30 - 7:00 PM	S140	Staff	\$10.00
27460	PZ	PENP 193	514	T/Tai Chi II	1	MW	1:30 PM - 2:45 PM	S140	Staff	\$10.00
27461	Z	PENP 193	515	T/Walking with Poles & Pedometers	1	TTh	12:00 PM - 1:15 PM	S140	Karnes-Padilla, D.	\$10.00
27464	PZ	PENP 193	516	T/Intermediate Pilates II	1	TTh	4:30 - 5:45 PM	S140	Staff	\$10.00
27465	PZ	PENP 193	517	Middle Eastern Belly Dancing II	1	TTh	6:00 - 7:15 PM	S140	Staff	\$10.00
27466	Z	PENP 193	518	T/Salsa Dancing II	1	W	6:00 - 8:00 PM	S111	Staff	\$10.00
22938		PSY 105	506	General Psychology	3	MW	3:00 - 5:45 PM	A131	Staff	
22122		SPAN 101	505	Conversational Spanish	1	TTh	1:30 PM - 4:15 PM	A124	Staff	
22511	CZ	SPAN 103	505	Elem. Spanish Conversation Lab I	1	ARR			Staff	\$5.00

Weekend College

You can take the weekends off, or you can take advantage of boosting your career with the UNM-Valencia Weekend College program. UNM-Valencia is now offering weekend courses designed for people who can't take classes during the week but who have the desire to advance their careers and/or their education. With Weekend College, you can take courses for college credit on Saturdays at the UNM-Valencia Campus!

22791		CJ 130	504	Public Speaking	3	S	12:00 PM - 2:45 PM	A124	Staff	
22853	RP	ENGL 101	506	Composition I: Exposition	3	S	12:00 PM - 2:45 PM	A127	Staff	
27433		HIST 102	501	Western Civilization	3	S	9:00 - 11:45 AM	A101	Staff	
22877		HIST 161	502	History of U.S. 1607 to 1877	3	S	12:00 PM - 2:45 PM	A101	Staff	
22941	P	STAT 145	502	An Intro to Statistics	3	S	9:00 - 11:45 AM	H105	Staff	
22935		PSY 105	503	General Psychology	3	S	12:00 PM - 2:45 PM	A131	Staff	
22109		SOC 101	503	Intro to Sociology	3	S	9:00 - 11:45 AM	A131	Staff	
22120	L	SPAN 101	503	Elementary Spanish	3	S	9:00 - 11:45 AM	A127	Staff	

Location Key

A	Arts & Sciences Building
C	Career Technical Center
H	Health Sciences Building
S	Student/Community Center (includes Fitness/Wellness Center, Multipurpose Room, & upstairs classrooms)
V	Business & Technology Building

Footnote Key

A	Open entry/open exit.
C	Credit/no credit grading only.
F	Students need to plan for up to two (2) hours of out-of class lab or studio time per week.
H	Students are responsible for purchasing their own materials.
L	Students must enroll in a lab section.
M	Upper-division UNM courses offered at UNM-Valencia require that students be admitted to UNM (main campus), pay main campus tuition, and be advised prior to enrollment. Please consult with the Registrar or the instructor prior to enrolling.
P	See UNM General Catalog or UNM-Valencia Catalog for pre-requisites, co-requisites, and/or other information and requirements.
R	Restricted: requires advance approval from department or instructor.
X	Cross-listed course: see UNM General Catalogue or UNM-Valencia Catalogue for other listings.
Z	Special fee

NOTE: Classes in grey type indicate evening and night courses.

Need To:

- Prepare for college?
- Obtain a New Mexico state high school diploma?
- Improve your English skills?
- Get or keep a job?
- Learn more about making a difference in your community?

The Adult Education Center has FREE services to meet your needs!

You can improve your reading, writing and math skills!

Instruction Offered:

- GED (General Educational Development) in English and Spanish
Subjects: Reading, Writing, Math, Science, and Social Studies
- English as a Second Language
- Civic participation and US citizenship
- Classes, tutoring, study groups
- Computer-based and Internet GED courses available days and evenings!



For more information about registration and schedules call

925-8900

or visit us on the Web: <http://vcabe.unm.edu>

Llame al 925-8923 ó 925-8925 para información en Español.

**Need a ride?
Call Los Lunas
Transportation at
352-3595**

**Instruction
&
Materials
FREE**

**Childcare provided for
many of our classes.
For information, call
925-8923.**



The University of New Mexico
V A L E N C I A

Adult Education Center

Funded in part by the Higher Education Department.

Services provided for people with disabilities.

The UNM-Valencia Campus is an Affirmative-Action/Equal Opportunity Institution.

Spring 2007 Schedule

Session 1: January 16 - February 16 • Session 2: February 19 - March 30 • Session 3: April 2 - May 4

Introduction to the GED held the weeks of January 8, February 12 & March 26

No classes: Martin Luther King Day, January 15, and Spring Break, March 12 - 16

Class Title	Days	Time	Location
Introduction to the GED	Tues. - Thurs.	9:00-12:30 pm	UNM-VC
Introduction to the GED	Wed. & Thurs.	5:30-8:30 pm	UNM-VC
Problem-Solving Workshops	Mon. - Thurs.	8:00-8:50 am	UNM-VC
Employability Skills Workshops	Fri.	9:00-12:30 pm	UNM-VC
Geometry and Algebra	Mon. - Thurs.	9:00-10:30 am	UNM-VC
Fractions, Decimals and Percents	Mon. - Thurs.	9:00-10:30 am	UNM-VC
Geometry and Algebra	Tues. & Thurs.	5:30-7:45 pm	UNM-VC
Fractions, Decimals and Percents	Tues. & Thurs.	5:30-7:45 pm	UNM-VC
Math Review	Mon. - Thurs.	9:00-10:30 am	UNM-VC
Math Review	Mon. - Thurs.	3:30-5:00 pm	UNM-VC
Math Review	Mon. & Wed.	5:30-7:30 pm	UNM-VC
Applied Reading and Writing	Mon. - Thurs.	10:45-12:15 am	UNM-VC
Applied Reading and Writing	Mon. - Thurs.	10:45-12:15 am	UNM-VC
Applied Reading and Writing	Mon. & Wed.	5:30-7:45 pm	UNM-VC
Applied Reading and Writing	Mon. & Wed.	5:30-7:45 pm	UNM-VC
Essay Writing	Mon. & Wed.	10:45-12:15 am	UNM-VC
Essay Writing	Mon. & Wed.	1:00-3:30 pm	UNM-VC
Essay Writing	Tues. & Thurs.	5:30-6:30 pm	UNM-VC
Computer-based Instruction	Mon. - Thurs.	1:00-3:30 pm	UNM-VC
Computer-based Instruction	Tues. & Thurs.	6:30-7:30 pm	UNM-VC
Computer-based Instruction	Tues. & Thurs.	10:45-12:15 am	UNM-VC 119
Guided Internet Course	ARR	ARR	ARR
General Instruction	Mon. - Thurs.	9:00-12:00 pm	Moriarty- Torrance Works Center
General Instruction	Tues. & Thurs.	5:30-7:45 pm	Moriarty - Civic Center (Library)
General Instruction	Tues. & Thurs.	5:30-7:45 pm	Isleta Education Center
General Instruction - NEW SITE!	TBA	TBA	Workforce Connection, Belen
General Instruction - NEW SITE!	TBA	TBA	Mountainair
General Instruction	Mon. & Wed.	3:00-5:00 pm	Youth Development, Inc., Los Lunas
General Instruction	Tues. & Thurs.	3:00-5:00 pm	Youth Development, Inc., Los Lunas
GED en Español	Mon. & Wed.	9:00-11:15 am	El Cerro Mission Community Center
GED en Español	Mon. & Wed.	5:30-7:45 pm	UNM-VC
Citizenship - Session 1 only	Mon. & Wed.	5:30-7:45 pm	UNM-VC
ESL - Beginning	Tues. & Thurs.	9:00-11:15 am	El Cerro Mission Community Center
ESL - Intermediate/Advanced	Tues. & Thurs.	9:00-11:15 am	El Cerro Mission Community Center
ESL - Beginning	Tues. & Thurs.	5:30-7:45 pm	UNM-VC
ESL - Intermediate/Advanced	Tues. & Thurs.	5:30-7:45 pm	UNM-VC
ESL - Beginning	Mon. & Wed.	9:00-11:15 am	UNM-VC
ESL - Intermediate/Advanced	Mon. & Wed.	9:00-11:15 am	UNM-VC
ESL - Transitional (College Prep)	Tues. & Thurs.	5:30-7:45 pm	UNM-VC

Tutoring, study groups and computer-based instruction also available.

Childcare may be available for children over 2 1/2. Call 925-8925 for more information.

NEED A RIDE FROM ANYWHERE IN VALENCIA COUNTY? CALL LOS LUNAS TRANSPORTATION 352-3595

Adult Education Center

Hours

January 8 - January 11: Monday - Thursday, 9:00 AM - 5:00 PM

January 16 - May 11: Monday - Thursday, 8:30 AM - 7:30 PM

Visit us on the Web for the most up-to-date information: <http://vcabe.unm.edu>

**UNM-Valencia Campus
Small Business Development Center**

"Making a Difference One Business at a Time!!"

Our Success Clients Honored and Recognized at the State Capitol



1999 Success Client



2000 Success Client



2001 Success Client

**Los Lunas
Animal
Clinic
2002
Success
Client**



**Almost
Heaven
Salon & Spa
2005
Success
Client**



**P&M Signs
Phil Archuleta, CEO
2003 Success Client**



**2004
Success
Client**

**Let our Certified Business Analysts help you start your business,
or help with the continued success of your business.**

We offer:

- One-on-One Business Advising
- Business Plan Assistance
- Loan Proposals
- Small Business Seminars
- Business Library and Videos
- Marketing Materials
- SBA Publications

All information is confidential (unless a release is signed) and advising services are provided free of charge.

Call and make an Appointment Now!!

505-925-8980



The New Mexico SBDC is partially funded under cooperative agreement 4-603001-Z-0032-16 by the SBA. Funding support does not constitute implied or expressed endorsements. Services are extended on a non discriminatory basis. Special arrangements for disabled people can be made if requested in advance. UNM-Valencia Campus SBDC – 280 La Entrada, Los Lunas, NM 87031. Phone: (505) 925-8980. Fax: (505) 925-8981.



Spring 2007 Course Offerings in Socorro

Classes Start January 16, 2007

Socorro High School

Course#	Sec.#	CRN#	Credit Hours	Course Title
ECME 101	502	27477	3	Child Growth, Development and Learning

This course in the growth, development, and learning of young children, prenatal through age eight, provides students with the foundation for becoming competent early childhood professionals and knowledge of how young children grow, develop and learn. Major theories of child development are integrated with all aspects of development, including biological-physical, social, cultural, emotional, cognitive, and language domains. The adult's role in supporting each child's growth, development and learning will be emphasized. Mondays/Wednesdays, 6-7:15 p.m., Instructor: Staff; Location: Socorro High

MATH 100	509	47478	4	Introduction to Algebra
-----------------	------------	--------------	----------	--------------------------------

Topics covered include linear equations, polynomials, factoring, formulas, graphing, and applications problems and include a skills laboratory. Grade option: A, B, C, CR/NC. Prerequisites: Successful completion of MATH 099 (A, B, C, CR) or minimum placement test score. Mondays/Wednesdays, 6-7:40 p.m., Instructor: William Oxford; Location: Socorro High (Note: Students must take the Placement Assessment at Valencia Campus prior to First Class Date.)

MATH 111	502	27479	3	Mathematics for Elementary and Middle School Teachers I
-----------------	------------	--------------	----------	----------------------------------------------------------------

The intuitive and logical background of arithmetic; properties of sets; algorithms of arithmetic in base ten and other bases; properties of the integers, mathematical terminology; elements of number theory; problem solving. Prerequisite: Successful completion of MATH 100 (C or higher) or satisfactory score on math placement test. Tuesdays/Thursdays, 6-7:15 p.m., Instructor: Staff; Location Socorro High

MATH 120	508	27480	3	Intermediate Algebra
-----------------	------------	--------------	----------	-----------------------------

Preparation for MATH 121, 129 and STAT 145. Covers linear equations and inequalities, polynomials, factoring, exponents, radicals, fractional expressions and equations, quadratic equations, perimeters, and areas of simple geometric shapes. Emphasis on problem solving skills. Acceptable as credit toward graduation in some programs but not acceptable to satisfy the UNM Core Curriculum or New Mexico Common Core requirement in Mathematics. Grade Option: A, B, CR/NC. Prerequisites: Successful completion of MATH 100 (C or CR) or satisfactory score on math placement test. Tuesdays, 5:30-8:15 p.m., Instructor: David Anglen; Location: Socorro High

MATH 121	505	22951	3	College Algebra
-----------------	------------	--------------	----------	------------------------

Preparation for Math 150 and 180. The study of equations, functions, and graphs, especially linear and quadratic functions. Introduction to polynomial, rational, exponential, and logarithmic functions. Applications involving simple geometric objects. Emphasizes algebraic problem solving skills. Prerequisite: Successful completion of MATH 120 (A, B, or CR) or satisfactory score on math placement test. UNM Core Curriculum – 2: Mathematics; New Mexico Common Core – Area II: Mathematics. Mondays/Wednesdays, 6-7:15 p.m. Instructor: Greg Ezell; Location: Socorro High

PSY 105	507	27481	3	General Psychology
----------------	------------	--------------	----------	---------------------------

Overview of the major content areas in psychology. Topics to be covered include learning, cognition, perception, motivation, biological systems, social and abnormal psychology, development, personality, and approaches to psychotherapy. Suggested prerequisite: ENGL 101. UNM Core Curriculum – 4: Social & Behavioral Sciences; New Mexico Common Core – Area IV: Social/Behavioral Sciences. Tuesdays, 5:00-7:45 p.m., Instructor: Debbie Westfall; Location: Socorro High

SPAN 101	506	22124	3	Elementary Spanish
-----------------	------------	--------------	----------	---------------------------

Beginning Spanish for students with no previous exposure to Spanish. Development of all four language skills, with emphasis on listening and speaking. UNM Core Curriculum – 6: Foreign Language. Mondays/Wednesdays, 6-7:15 p.m. Instructor: Staff; Socorro High

Spring 2007 Course Offering in Moriarty

Class Starts January 22, 2007

Moriarty Head Start Building

Course#	Sec.#	CRN#	Credit Hours	Course Title
ECME 115	501	27476	3	Guiding Young Children

This course explores various theories of child guidance and the practical application of each. It provides developmentally appropriate methods for guiding children and effective strategies and suggestions for facilitating positive social interactions. Appropriate strategies for preventing and dealing with violence, aggression, anger, and stress will be included. Emphasis is placed on helping children become self-responsible, competent, independent, and cooperative learners. Mondays, 4:15-7:00, Instructor: Elizabeth Kyle; Location: Moriarty Head Start

Off-Campus Instruction

Spring 2007

The University of New Mexico-Valencia Campus currently offers credit courses in Socorro and Moriarty. We continually strive to improve our education programs in your community and ask for your help in recruiting local instructors. Apply at UNM-Valencia Campus, Human Resources Office, Administration Building, 280 La Entrada, Los Lunas, NM 87031. For information call (505) 925-8530. We will consider all qualified applicants. Watch for our ads in your local media and throughout your community. If you have ideas on how we can promote this program, call 925-8970.

Spring classes start the week of January 16 and end the week of May 12, unless otherwise indicated.

Classes with insufficient enrollment will be canceled, so students are encouraged to register in advance at the UNM—Valencia Campus or through LoboWeb. Call (505) 925-8580 for further information about the Valencia Campus off-campus sites.

Tuition & Fees

Each course is offered at a tuition and fee rate of \$50 per credit hour (\$150 for a three-credit hour course). In addition, computer courses require a \$15 lab fee. Students whose classes are canceled will receive a full refund of their tuition and fees. Tuition and fees are not collected during on-site registration. Students will be billed a later date. Senior citizens (ages 65 or older) receive a discount on tuition and fees to \$5 per credit hour (\$15 for a three credit hour course plus lab fees where applicable) for all credit hours taken.

Placement Assessment

Placement assessments are required for students enrolling in math or English courses. Call Student Services at (505) 925-8560 for a schedule of exam dates, or to make a special appointment to take the placement test.

Textbooks

Students registering at the off-campus sites will receive a book order form at the time of registration. Students may order books by phone with a Visa or MasterCard by calling (505) 925-8801; or by mailing a check or money order with the completed form. Valencia Campus staff present during registration may collect the completed order forms with payment as indicated above. Cash will not be accepted at the off-campus sites. Books will be mailed to the student's address upon paid receipt of order and if the class meets minimum enrollment requirements. Postage is paid by the UNM—Valencia Campus Bookstore. If the class is canceled due to insufficient enrollment, order forms will not be processed and payment will be returned to the students by mail. Books also can be purchased at the UNM—Valencia Campus Bookstore.

Bachelor and Graduate Programs at UNM-Valencia Campus

Live On-Site Courses at UNM-Valencia Campus

Course#	Call#	Sec.	Cr. Hrs.	Title	Instructor
EDPY303		3		Human Growth & Development	Conescu
Principles of human growth and development across the life span and implications for education. Days: Mondays & Wednesdays; 4:30-5:45 p.m.					

More on-site courses will be available by Dec. 4.
Call 925-8970 for details and information.

Spring 2007 Instructional Television (video conferencing)

For more information, including CRN numbers, call 925-8970

Course#	Call#	Sec.	Cr. Hrs.	Title	Instructor
CJ 300		3		Theories of Communication	
Study of the nature of communication theories and theory development, theories of meaning, information processing and influence with applications to selected communication contexts. Prerequisite: 101. Days: Tuesdays & Thursdays; 5-6:15 p.m. Location: SCC 237					
CJ 327		3		Persuasive Communication	
Analysis, practice and evaluation of principles of attitude change for a variety of interpersonal and public communication situations. Days: Thursdays; 7-9:30 p.m. Location: SCC 237					
LEAD 509		3		Schools as Organizations	Murphy
This course is designed as an introduction to the concepts, theories and processes of organizational theory and organizational behavior will provide prospective education leaders with a better understanding of the way organizations operate. Days: Mondays; 4-6:15 p.m. Location: SCC 209					
LEAD 596		3		Administrative Internship	Saavedra
The Administrative internship provides field-based experiences to develop the skills, knowledge, and practices identified in the New Mexico Administrator competencies. Students must apply to the internship through the Program office. Days: Thursdays; 4-6:45 p.m. Location: SCC 209					
HED/PEP 487		3		Physical Activity & Aging	Miko
Concerned with the process of aging as it affects physical activity and the potential of physical activity in adjustment to the process of aging. Days: Tuesdays; 4-6:30 p.m. Location: SCC 209					
HED/PEP 587		3		Physical Activity & Aging	Miko
Concerned with the process of aging as it affects physical activity and the potential of physical activity in adjustment to the process of aging. Days: Tuesdays; 4-6:30 p.m. Location: SCC 209					
MGMT 306		3		Organizational Behavior & Diversity	Champoux
Emphasis on application of behavioral science theory and concepts. Focus on individual, interpersonal and group processes in a diverse work force. Days: Thursdays; 12:30-3:15 p.m. Location: SCC 209					

BACHELOR & GRADUATE PROGRAMS AT UNM-VALENCIA CAMPUS

NATV 450T	3	Tribal Gaming	Bird Bear
Days: Mondays; 6:30-9 p.m. Location: SCC 209			
NATV 450T	3	Building Community Indigenous Nations	Staff
Days: Tuesdays; 6:30-9 p.m. Location: SCC 237			
NATV 450T	3	Teaching the Native American Child	Cajete
Days: Wednesdays; 4-6:30 p.m. Location: SCC 209			
LLSS 544	3	Teaching the Native American Child	Cajete
Days: Wednesdays; 4-6:30 p.m. Location: SCC 209			
PSY 331	3	Psychology of Personality	Alley
Survey of theory, research and applications of both classical and contemporary approaches to the study of personality. Prerequisite: 200 and 220. Days: Wednesdays; 7-9:30 p.m. Location: SCC 209			
PSY 332	3	Abnormal Behavior	Lensik
Review of the historical, scientific and ethical issues in the field of psychopathology. Categorization of deviant behavior, theories of abnormal behavior, systems of therapy and relevant research are covered. Prerequisite: Psych105. Days: Tuesdays; 7-9:30 p.m. Location: SCC 209			
PUB 524	3	Intergovernmental Administration	Rivera
Organization of federal system, focusing on relationships and problems among agencies on different levels of government. Considers inter-state, interlocal and regional organizations and implementation of intergovernmental programs and policies. Days: Thursdays; 7-9:30 p.m. Location: SCC 209			
PUB 544	3	Public Budgeting	Falcone
Basic management of public funds, preparation and processing of budgets, revenue projection and expenditure controls. Issues of public policy and establishment of priorities through budgeting. (required). Days: Saturdays; 11-1:30 p.m. Location: SCC 209			
PUB 590-F	3	Seminar on Not for Profit	Falcone
Days: Saturdays; 2-4:30 p.m. Location: SCC 209			
SOC 471	3	Contemporary Sociological Theory	Hovey
Comparative analysis of major contributions to sociological theory in the 20th century: Functionalism, Phenomenology, French Structuralism, Analytical Marxism. Prerequisite: 101. Days: Wednesdays; 4-6:30 p.m. Location: SCC 237			

Bachelor and Graduate Courses (Online)

AMERICAN STUDIES

CRN	Course	Sec.	Course Title	Credit	Instructor
15686	AM ST 310	021	WM Art of American West	3	Ressler, S.

***All American Studies courses have a \$100.00 course fee.*

CIVIL ENGINEERING

18106	CE 473	001	Construction Law	3	Staff
18107	CE 474	001	Principles of Written Construction Doc	3	Staff
18108	CE 475	001	Construction Safety	3	Staff
18187	CE 575	001	Construction Safety	3	Staff
18200	CE 598C	001	Construction Law	3	Staff
18202	CE 598D	004	Principles of Written Construction Doc	3	Staff

***All Civil Engineering Courses have a \$130.00 course fee.*

BACHELOR & GRADUATE PROGRAMS AT UNM-VALENCIA CAMPUS

EDUCATIONAL LEADERSHIP

27324	LEAD 561	001	Legal Issues for School Leaders	3	Anderson, Jim
26361	LEAD 581	001	S: Conflict Mediation	3	Noll, B.
27647	LEAD 593	003	Socio Cult Studies Hi & Postsec Ed	3	Chavez, A.

***All Educational Leadership courses have a \$100.00 course fee. Face to face meetings scheduled, see <http://online.unm.edu> for information*

ELECTRICAL & COMPUTER ENGINEERING

25817	ECE 469	002	Antennas for Wireless Communication	3	Christodoulou, C.
25842	ECE 536	002	Computer Systems Software	3	Shu, W.
25847	ECE 546	002	Multivariable Control Theory	3	Dorato, P.
25850	ECE 549	002	Infomr Thry & Coding	3	Helimenag, G.
25860	ECE 561	002	Electrodynamics	3	Gilmore, M.
25864	ECE 569	002	Antennas for Wireless Communication	3	Christodoulou, C
23525	ECE 590	002	Graduate Seminar	3	Shu, W.

***All Electrical & Computer Engineering courses have a \$130.00 course fee.*

ENGLISH

25991	ENGL 413	002	Scientific, Environmental & Medical Write	3	Marcie, M.
16170	ENGL 418	002	Proposals	3	Thomas, V.
26073	ENGL 513	002	Scientific, Environmental & Medical Write	3	Marcie, M.
16535	ENGL 518	002	Proposals	3	Thomas, V.

***All English courses have a \$100.00 course fee.*

MANAGEMENT

23524	MGMT 300	006	Operations Management	3	Jurkat, M.
13171	MGMT 301	005	Computer Based Info Systems	3	Harris, D.
13198	MGMT 303	005	Managerial Accounting	3	Brooks, A.
13244	MGMT 306	023	Organizational Diversity	3	Champoux, J.
13324	MGMT 322	005	Marketing Management	3	Shul, L.
13363	MGMT 336	001	Information Systems Security	3	Seazzu, A.
25317	MGMT 503	002	Managerial/Cost Accounting	3	Brooks, A.
25347	MGMT 506	003	Organizational Diversity	3	Champoux, J.
25355	MGMT 520	002	Operations Management	3	Kraye, S.
13966	MGMT 636	001	IS Security	3	Seazzu, A.
24384	MGMT 639	001	Advanced IMS Topics	3	Seazzu, A.

***All Management courses have a \$130.00 course fee.*

MATH

27326	MATH 350	001	T/Math for Secondary Teachers: Calculus	3	Umland, K.
-------	----------	-----	-----------------------------------------	---	------------

***All Math courses have a \$10.00 course fee.*

NURSING

27098	NURS 239	001	Pathophysiology I	3	Courney
27688	NURS 252	003	Human Physio Func II	2	Courney
27106	NURS 329	001	Applic Hlth & Illness Concepts	4	Brown, P.
19226	NURS 332	002	Intro Nurs Res & Evi Base Prac	3	Davis, A.
24880	NURS 340	001	Human Phys Func Dis II	2	Guarnero, P.
19263	NURS 431	002	Community Assessment	4	Harris, J.
22480	NURS 441	001	Evi Based Appl Hlth Assess Skls	4	Matta, K.
23624	NURS 447L	001	Fam/Commun Hlth Prac	3	Shuster, G.
19305	NURS 501	001	Theoretical Found Adv Nursing	3	Overman, B.
19321	NURS 503	001	Research in Nursing I	3	Parshall, M.
19322	NURS 505	001	Hlth Care Poly Sys Adv Roles	3	Brady, D.
27137	NURS 510	001	Educational Program Dev Eval	3	Lobo, M.
27142	NURS 513	001	Admin to Facil Qual Clin Care	3	Woods, P.
27139	NURS 522	001	Appl of Epidem Comm Prob	3	TBA
19368	NURS 526	001	Pathophysiology Adv Pract Nurs	3	Mugliston, G.
19372	NURS 543	001	Pharm Prin of Clin Therapeutic	3	Minoli, K.
27140	NURS 558	001	Brain & Behavior Corr Hlth & Ill	3	Duphorne, P.

27159	NURS 602	001	Theory I: Cont Subst Nurs Know	3	Averill, J.
27160	NURS 604	001	Adv Hlth Care Stat I	3	Meek, P./Parshall, M.
27161	NURS 608	001	Nurs Envir of Human Hlth	3	Mendelson, C.
27162	NURS 610	001	Nurs Educ: Pedagogy & Roles	3	Giddens, J.
27163	NURS 612	001	Clin Nurs Thera & Outcomes	3	Meek, P.

***All Nursing courses have fees. Call (505) 272-4223 for more information*

ORGANIZATIONAL LEARNING AND INSTRUCTIONAL TECHNOLOGIES

26628	OLIT 420	001	Creativity and Tech Design	3	Jaderlund, E
	OLIT 528	001	Management Learning Systems	3	Bramble, B.
26634	OLIT 538	001	Distance Education Course Design	3	Barrett, K.

***All Organizational Learning & Instructional Technologies courses have a \$100.00 course fee. Call 1-800-866-869-6040 for CRN number or see <http://online.unm.edu>*

PSYCHOLOGY

27325	PSY 332	037	Abnormal Behavior	3	Steele, J.
-------	---------	-----	-------------------	---	------------

***All Psychology courses have a \$100.00 course fee*

WOMEN STUDIES

14162	WM ST 379		WM Art of Am SW (Taught with AMST 310)	3	Ressler, S.
-------	-----------	--	-------------------------------------------	---	-------------

***All Women Studies courses have a \$100.00 course fee.*

Bachelor & Graduate Programs UNM-Valencia Campus

Live On-Site Courses: UNM Valencia Center offers 8- and 16-week upper division courses leading to core requirement completion, a Bachelor of University Studies (BUS), or Bachelor Degrees in Education. BUS areas of study include: Communication & Journalism, Economics, Health Education, Management, Public Administration, and Sociology. Course offerings in each of these disciplines vary by semester.

Instructional Television: In addition, 16-week upper division and graduate level courses are offered through video conferencing at UNM-Valencia Campus. Courses include American Studies, Communication & Journalism, Educational Leadership, Health Education, Management, Native American Studies, Professional Physical Education, Psychology, Public Administration, and Sociology.

Other options for students to access upper division courses include Independent Study through Correspondence courses.

For a complete schedule call UNM-Valencia Campus Community Education Services, 925-8970, after Dec. 4.

Policies & Procedures

All UNM Valencia Center courses are governed by UNM Main Campus policies and procedures as outlined in the current edition of the UNM Catalog and The Pathfinder (the UNM Student Handbook). Students may pick up a copy of The Pathfinder from UNM Main Campus, or view it online at <http://www.unm.edu>

Admissions

All individuals who plan to attend UNM Valencia Center Bachelor and Graduate Program courses must first be admitted to UNM before they can register.

Undergraduate application and credentials deadline: November 15, Wednesday

Instruction begins January 16, Tuesday

Registration ends - last day to add courses or change sections January 26, Friday

Individuals who already hold degrees and want to take credit courses may be admitted as Non-Degree students. Visit the Non-Degree website, <http://www.unm.edu/~ndc/>

Registration

Register for the spring semester by using LoboWeb.

Tuition & Fees

UNM Valencia Center Bachelor and Graduate Program courses follow the same tuition schedule as UNM Main Campus courses. To see the current tuition rates, please visit <http://www.unm.edu/~bursar/>

All tuition must be paid on or before the financial disenrollment dates as stated by UNM Main Campus to avoid being dropped from courses.

Personal Enrichment Courses for Credit • Spring 2007

Course#	Sec.#	CRN#	Cr. Hr.	Title	Instructor
GS 193	505	23026	1	From the Ground Up	Jan Pacifico
Explore the properties of indigenous clays from local sites as this class begins with digging and processing the clay. Pots are formed in the age-old traditional coil-and-scrape method, burnishing and decorating them with local slips and minerals. Finally the pottery is "pit-fired" by ancient methods using "cow-chips" or wood. Materials fee of \$20 is payable to instructor at the first class session. Dates: 3/24 – 5/12; Days: Saturdays; times: 2-4 p.m. Location: Tome Gallery, Hwy 47, across from Patricio Rd.					
GS 193	506	23030	1	Alternative Medicine	Mark Nagrodsky
This course provides a basic overview of currently available alternative medicine therapies and treatment programs. Topics include body chemistry balance, immune system building, body cleansing and detoxing, holistic kinesiology, clinical herbology, live cell therapy, ozone therapy, heavy metal toxicity and more. Dates: 3/22 – 5/10; Days: Thursday; Times: 3:30-5:30 p.m. Location: Arts & Sciences Room 141					
GS 193	507	23027	1	Introduction to Watercolor	Patricia Page
Learn basic techniques of watercolor from beginning to end through demonstrations and class critiques. Topics include composition, color theory and design using line, shape, space, value and the use of transparent glazing to achieve the creative expression of watercolors. This class is for both the beginner as well and the more advanced student Dates: 3/19-5/9; Days: Mondays & Wednesdays; 2:45-4 p.m. Location: Business & Technology Room 106					
GS 193	508	27640	1	Computer Savvy for Seniors	Thomas Montoya
Although the focus of this class is for senior citizens and retirees, anyone who has a desire to learn basic concepts of computer operations can benefit. Instruction is geared around Microsoft applications and how the computer can be a most valuable tool for individuals who want to email relatives who live far away, create their own website to share with family and friends, and search for knowledge over the internet. The use of the hard drive and CD/ DVD storage media to set up a filing system and how to maneuver within that system will also be covered. Dates: 3/24-5/12; Days: Saturdays 10-12 p.m. Location: Health & Sciences Room 103					

Professional Development Courses for Credit • Spring 2007

Course#	Sec.#	CRN#	Cr. Hr.	Title	Instructor
GS 193	503	23024	3	Aviation Ground School	Pedro G. Rael
This course prepares students to take the ground examination which is required to become a pilot, after which they have 2 years to complete the flying portion of the course. Students will gain an understanding of the history of flight, FAA regulations, aeronautics, airplane instruments and systems, weather, navigation and cross country flight planning. Lectures: Dates: 1/17 – 5/3; Days: Wednesdays; Times: 6-8:30 p.m. Location: Arts & Sciences Room 141 Field Trips (dates and times to be announced the first day of class): Mid-Valley Airport, Belen Alexander Airport and Albuquerque International Airport Flight Service Station; Required book and list of supplies will be available at the first class session.					
GS 193	504	27628	1	Aviation Ground School Lab	Pedro G. Rael
Co-requisite for GS193T Dates: to be announced the first day of class; Days: Tuesdays; Times: 4-6 p.m. Location: TBA					
GS 193	509	27641	1	So, You Want to Write a Book	William Stone
Do you have an idea for a non-fiction book but don't know where to begin? This class will cover what you need to know and do to make it happen. Topics include getting started, organization, research, what publisher to use, the proposal, to illustrate or not to illustrate, pre- and post publication reviews, marketing tips, and more. Class includes hands-on exercises directly related to your project. Dates: 3/24 – 5/12 Days: Saturdays; 10 – 12 p.m. Location: Arts & Sciences Room 140.					
GS 193	510	27808	1	Sensory Writing for the Budding Professional	Deborah Finkelstien
Do you have an interest in writing professionally and want to find out how to go about it? Learn how to write travel articles and different markets to share them with. Find out what to include in a book review and how to get one published. Explore the basics of a press release and discuss methods of contacting the media. This course will heighten your awareness of the world around you as you learn to create great details and descriptions for your writing through sensory awareness. Participate in interactive writing exercises to help you become a better observer. Description and details are key elements in writing. This class will be of great benefit to those who write about their travels, novels, short stories, memoirs, poetry, and journalism. Dates: 4/7; 4/14/ & 4/21; Days: Saturdays; 10-4 p.m. Location Arts & Sciences Room 129					

Cultural Enrichment Series

Spring 2007

January

18th Annual Martin Luther King, Jr. Celebration

Saturday, January 13, 1 - 4 p.m., Student Community Center

This celebration honors the life of Dr. Martin Luther King, Jr. with performances by local youth groups, choir ensembles, as well as a keynote address by Sherri Burr, UNM School of Law professor and weekly columnist for the *Albuquerque Tribune*. Refreshments will be served and African American arts and crafts are available for purchase. This event is sponsored by Rio Abajo Lodge #17 and the Mt. Everest Lodge #1. This program is also funded in part by the National Endowment for the Humanities and the New Mexico Office of Cultural Affairs. Sherri Burr's keynote address is entitled "Race and Racism in the New Millennium."

February

4th Annual Santero del Rio Abajo Exhibit: February 21 - March 21

Opening reception Wednesday, February 21, 5 - 7 p.m., UNM-Valencia Fine Arts Gallery

March

Summit on Aging: Our Cultural Creatives, Legacy Launchers and National Treasures

Wednesday, March 7, 9 - 11:30 a.m., Student Community Center

This morning event will feature guest speakers, music, and more.

Once Upon a Theatre presents "Short Stories on Stage"

Thursday, March 29, 10 - 11 a.m., Student Community Center

Experience the joy and magic of quality live theatre! This professional production with adult actors, full costuming and detailed sets brings the works of outstanding short story writers to life on stage. These unique adaptations, written partially in rhyme, deliver positive messages about diversity, friendship, caring and the power of love and acceptance. Appropriate for students grades 4 and up, teachers, and all lifelong learners who appreciate the arts.

April

24th Annual Valley Cultural Festival: An Evening of Art and Culture

Friday, April 20, 6:30 - 8 p.m., Student Community Center

The first of these community events took place on 24 years ago as the Shakespeare-Cervantes Celebration. Both famous writers are thought to have died on April 23, 1616, thus the traditional date of the celebration has been on the Friday closest to that date. During the 1980's, the celebration was reborn as the Valley Cultural Festival, celebrating the land, the people, and the culture of the college and of the surrounding community.

24th Annual UNM-VC Faculty/Staff Exhibit: April 18 - May 2

Opening reception Friday, April 20, 5 - 8 p.m., Fine Arts Gallery



**All events are free and refreshments are served.
For information, call 925-8970.**



Training Center for CPR and First Aid

Valencia Campus Community Education Services is an American Heart Association Authorized Provider of Basic Life Support CPR and ECC Courses. The Training Center is located in Community Education Services on the 2nd floor of the Student Community Center Complex.

All courses, including non-credential CPR awareness training, are available for your organization by special arrangement. Please contact the Training Center at 925-8970 for more information on the following programs:

- CPR for Family and Friends
 - CPR in the Schools
 - Family and Friends First Aid for Children
 - Heartsaver Pediatric First Aid
- All course fees include textbook and lab fees.**

Basic Life Support for Healthcare Providers

The Healthcare Provider course is designed to teach the skills of CPR for victims of all ages (including ventilation with a barrier device, a bag-mask device and oxygen), use of an automated external defibrillator (AED) & relief of foreign-body airway obstruction (FBAO). It is intended for participants who provide health care to patients in a wide variety of settings, including in-hospital and out-of-hospital settings. This course is recommended for healthcare providers such as physicians, nurses, paramedics, emergency medical technicians, respiratory therapists, physical & occupational therapists, physician's assistants, residents or fellows, medical or nursing students in training, aides, medical or nursing assistants and other allied health personnel. This is an eight-hour course. Scheduled course times: Saturdays, 9:00 a.m. - 5:00 p.m. Fee: \$58.00. Students receive a certification credential upon successful completion.

Dates:

February 10

April 14

June 9

August 11

October 13

December 8

Heartsaver First Aid & CPR

Rescuers learn to effectively recognize and treat adult emergencies in the critical first minutes until EMS personnel arrive. This is a modular class that offers the student the following options: Heartsaver First Aid with CPR & AED, Heartsaver CPR & AED only or First Aid only. This is a four (4) to eight (8) hour course depending on the options that you take. This course is recommended for all lay rescuers, such as employees in the workplace, daycare employees, babysitters, firefighters, police, airline personnel, security guards, family members of patients at high risk for sudden cardiac death, other lay rescuers and those who may have a need to respond to an emergency. Upon successful completion, students receive a certification credential.

Location: Student Community Center Room 209

Scheduled course times: Saturdays

CPR: 8 a.m.-1 p.m.; First Aid: 1:30 - 6 p.m.

Fee: \$90 (Heartsaver First Aid with CPR & AED)

Fee: \$48 (Heartsaver CPR & AED only)

Fee: \$46 (Heartsaver First Aid only)

Dates:

January 13

March 10

May 12

July 14

September 8

November 10



Community Education Services

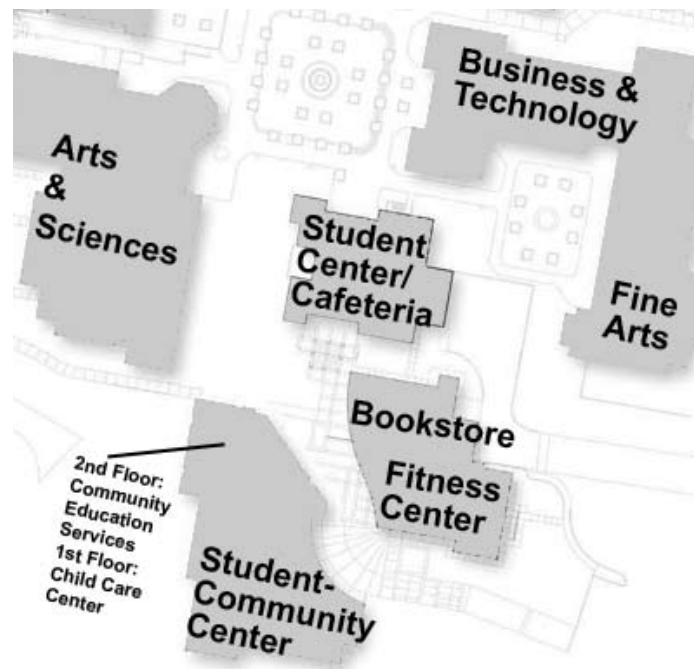
Community Education Services is located on the 2nd floor of the Student-Community Center, along with the Small Business Development Center and the Tech Prep program. Community Ed is comprised of the following unique programs providing learning opportunities for citizens of all ages.

- **Workforce Training:** Customized training for business, industry and government entities, offered on campus or at your place of business to prepare your employees to better serve your company's needs. A variety of vocational training programs are also available to prepare individuals to enter the workforce or to help dislocated workers find new careers.
- **Credit and non-credit courses** in subjects relating to personal enrichment, professional development and computer training.
- **Programs for children of all ages.** Classes include computers, arts, crafts, science, and more.
- **Cultural Enrichment Series,** bringing a wide variety of informational lectures and entertainment from cultures around the world and in subjects of all disciplines.

- **The Extended University** brings bachelor and graduate courses both live, on-site at the Valencia Campus, through videoconferencing or via satellite from UNM-Main Campus, as well as online course offerings.
- **Off Campus Instruction** in our neighboring communities of Socorro, Estancia, Mountainair Moriarty and the Isleta and Alamo Reservations.
- **CPR and First Aid training** through our American Heart Association Training Center.
- **Health Occupations** (for credit), including Certified Nursing Assistant (CNA), Emergency Medical Services (EMS) and Personal Care Attendant (PCA).
- **P-16 Grant,** enabling educational assistants in the Belen school district to complete their Bachelor Degrees.
- **Facility Master Scheduling** for the Valencia Campus. Non-profit organizations are welcome to use the facilities if available. Call 925-8565 for information.

Community Education Services is located on the second floor of the Student-Community Center, south side of the UNM-Valencia Campus.

For more information about Community Education Services, call 925-8970



Registration Admission

An application for admission is inserted for your perusal on pages 35-36 of this schedule of classes. Applications may also be obtained from the Registrar's Office, University of New Mexico-Valencia Campus, 280 La Entrada, Los Lunas, N.M. 87031, or by calling 925-8580. A non-refundable \$15 application fee must be paid prior to processing of an admissions application.

Early Registration Spring 2007

Early registration is set for Nov. 27, 2006. Hours are 8:00 a.m. to 5:00 p.m. for advisors and for registration.

LoboWeb

Students who have earned more than 26 college credit hours, who do not have registration holds, may register for UNM-Valencia Campus courses online. New, re-admitted, transfer, and those students who have 26 college credit hours or less must see an advisor prior to registering. It is strongly recommended that

all students visit with an advisor periodically to discuss their academic program. Students receiving VA benefits must see an academic advisor every semester.

Spring Financial Aid and Check Disbursement

Students seeking a financial aid deferment must receive approval from the Financial Aid Office. Students should be prepared to pay tuition at the time of registration unless they have pre-approved financial aid. Students seeking an installment tuition plan must check with the Cashier's Office for guidelines.

Students who are not receiving financial assistance for the spring 2007 semester must make other financial arrangements (ie. grant/loan approvals, installment plan, WIA, DVR, third party payments) at the Cashier's Office before Friday, January 12, 2007. If students fail to make financial arrangements with the Cashier's Office by January 12th, they will be dis-enrolled and will be required to re-register and pay beginning January 16, 2007. Upon re-registration, the student must make full payment or complete financial arrangements for all university charges. Students who are pursuing financial aid must complete FAFSA 2006-07 (Free Application for Federal Student Aid) to be eligible for financial assistance. Students may apply through the World Wide Web at www.fafsa.ed.gov. Please contact the Financial Aid Office at 925-8590 for additional information.

Spring 2007 Tuition Calculation Chart

Credit Hour	Resident Tuition	Non-Res.
1	\$52.00	\$52.00
2	\$104.00	\$104.00
3	\$156.00	\$156.00
4	\$208.00	\$208.00
5	\$260.00	\$260.00
6	\$312.00	\$312.00
7 *	\$364.00	\$973.00
8	\$416.00	\$1112.00
9	\$468.00	\$1251.00
10	\$520.00	\$1390.00
11	\$572.00	\$1529.00
12	\$624.00	\$1668.00
12-18**	\$624.00	\$1668.00

Tuition is subject to change at the discretion of the UNM Board of Regents.

*Non-resident students may take up to six credit hours and pay the same rate as resident students. For seven or more credits, each hour is charged at \$139 per hour. For students enrolled concurrently at multiple UNM campuses, the tuition and fees will be assessed by campus. For example, students must pay for the number of hours enrolled for at the Valencia Campus and at the Albuquerque Campus. Students petitioning for resident status must complete their petition by Jan. 16, 2007.

**Enrollment in excess of 18 credit hours is \$52 per credit hour for New Mexico residents and \$139 per credit hour for non-residents. Tuition paid for hours in excess of 18 credit hours is non-refundable.

Spring 2007 Tuition Refund Policy

Courses 3 weeks or less	
First day of class.....	100%
After first day of class.....	No Refund
Courses longer than 3 weeks, up to 6 weeks	
Friday of the first week of classes.....	100%
After Friday of the first week of classes.....	No Refund
Courses longer than 6 weeks, up to 9 weeks	
Friday of the second week of classes.....	100%
After Friday of the second week of classes.....	No Refund
Courses longer than 9 weeks	
Friday of the third week of classes.....	100%
After Friday of the third week of classes.....	No Refund

Spring 2007 Installment Payment Plan

Students may utilize an installment payment plan accessible through LoboWeb. Students must pay a down-payment plus a non-refundable deferment fee by Jan. 12, 2007 to avoid disenrollment.

Student Support Services

Students at UNM-Valencia Campus have a wide array of services available to them. Some of these services include advisement and counseling, placement assessment, career counseling, and tutoring. The campus also features a childcare center, library, fitness center, cafeteria, and bookstore. For detailed information about all of the services and facilities, see the electronic version of this schedule located on the UNM-Valencia website. Go to www.unm.edu/~unmvc/schedules/schedule.htm and click on "Spring 2007 schedules."

New Mexico Lottery Scholarship

Recent high school or GED graduates who have successfully completed their first semester of college (at least 12 credit hours and 2.5 GPA) are eligible to apply for the Lottery Scholarship.

Students are awarded tuition cost only. The tuition and fee rate for one hour of undergraduate tuition at Valencia Campus is \$48. Tuition covered under the program is \$45 per credit hour. Students must pay the balance of fees and be registered by the first day of classes.

Senior Citizen Discount

Senior citizens 65 years and older may attend UNM-Valencia Campus classes for \$5.00 per credit hour and course fees if they enroll for six credits or less. To take advantage of this discount, they must register on the first day of classes. Courses are offered at this special rate on a space-available basis. See page ? for refund deadlines.

Parking Permits

Valencia Campus parking stickers must be displayed on all student, staff, and faculty vehicles. These stickers are available free of charge at the Security Office, located in the Student Center, upon completion of a vehicle registration form. Only handicapped persons whose vehicles display the required special license, sticker, or decal should use handicapped parking. Violation of the Parking Policy could result in a boot (a device put on the wheel of a car that prevents it from being driven) being placed on your vehicle. See the Campus Security Office for details on the parking policy or call at 925-8570.

Valencia Campus Bookstore

The UNM-Valencia Campus Bookstore is located in the Student Community Center at the south end of the campus. The Bookstore carries textbooks required for Valencia Campus classes along with non-required study aids. Additionally, the Bookstore stocks a wide variety of school and office supplies, backpacks, health & wellness equipment, art supplies, UNM imprinted clothing and

specialty items, drinks and snacks, cards and gifts, and popular software at academic prices. For more information, please call 925-8801.

Forms of Payment: Textbooks and merchandise may be purchased with cash, check, VISA or MasterCard credit cards, and for those students who qualify, financial aid accounts. Accounts MUST be set-up through the Cashier's Office FIRST before purchases can be made in the Bookstore. Financial Aid accounts will be open for student purchases beginning: Jan. 5, 2007

Refund/Exchange Period: Textbooks and/or merchandise purchased for the full semesters may be returned to the Bookstore for either a refund or exchange during this period only. Items must be in original purchase condition and accompanied by the receipt. All refunds are processed by the Cashier's Office in the Administrative Building. Items purchased by check require a 21-day hold period from the payment receipt date. No refunds on books purchased during finals.

Last date to return textbooks:

16-week courses: Jan. 30, 2007, 5:30 p.m.
Listed as short courses: 3 days from beginning of class and student must present schedule.

All non-textbook merchandise must be returned within 72 hours. Textbook purchases made after above dates have a 24-hour refund policy.

Regular Bookstore Hours:

Mon – Thurs 8:30 a.m. – 5:30 p.m.
Friday..... 8:30 a.m. – Noon

Spring 2007 Registration Hours:

January 15 (Monday - Holiday)..... closed
Jan. 16-18 (Tuesday - Thursday)
..... 8:30 a.m.-6:00 p.m.
Jan. 19 (Friday) 9:00 a.m.-1:00 p.m.
Jan. 20 (Saturday) 8:30 a.m.-12:00 p.m.

Book Buy-Back:

Textbooks in resalable condition, requested by faculty, and needed for Bookstore inventory will be purchased during the week of finals each semester. Options to sell text-

books other than those described will also be available during this time and at other times posted during the semester (Check with the Bookstore Staff).

Cafeteria

The Valencia Campus Cafeteria is located in the Student Center. The cafeteria offers a wide variety of breakfast, lunch and snack items. Daily lunch specials are also provided Monday through Thursday.

Cafeteria Hours:

Monday through Thursday
..... 8:00 a.m. – 2:00 p.m.
Grill Fryer hours 8 a.m. – 1:45 p.m.
Friday (Includes Grill and Fryer)
..... 8:00 a.m. - 12:45 p.m.

The cafeteria may close during semester breaks and officially recognized UNM holidays. Vending machines (beverages and snacks) are located in the Student Center. The center is open 8:00 a.m. – 9:00 p.m. Monday through Thursday; and 8:00 a.m. – 5:00 p.m. Friday and Saturday during scheduled classes.

Student Code of Conduct

It is important for all students to be aware of conduct that will lead to disciplinary action by the University. In order to clarify the types of conduct which shall be considered to affect adversely the University's educational function, to disrupt community living on campus, or to interfere with the rights of others to pursue their education, to conduct their University duties and responsibilities or to participate in University activities, the Board of Regents hereby adopts a Code of Conduct for students that includes:

1. Scope
 2. Matters subject to disciplinary action
 3. Rights of students in disciplinary matters
 4. Sanction
 5. Implementation
- The Board of Regents also adopted policies regarding sexual harrassment and sexual assault policies.

For the complete code of conduct and policies regarding sexual assault, see the UNM-Valencia Campus 2006-2008 Catalog, or review the policies on-line at www.unm.edu/~unmvc.



280 La Entrada
Los Lunas, NM 87031
Tel: (505) 925-8580 Fax: (505) 925-8563
E-mail: valapp@unm.edu

APPLICATION FOR ADMISSION

A \$15.00 non-refundable application fee is required.

Student: Please complete all questions. Failure to answer any question may result in delay or denial of admittance to UNM-Valencia Campus.

1. Social security number
2. E-mail address:
3. Legal name-please print below your full legal name as you would like it to appear on your educational records. Leave one space between names.
- Last First Middle
4. Have your educational records ever been under another name(s)?
☐ Yes ☐ No If so list name(s) under which transcripts will arrive:
5. Mailing address
- City State Zip Code
6. Telephone number (Daytime)
(Home)
7. Gender
☐ Male ☐ Female
8. Birthdate
Month Day Year
9. Birthplace
City State
10. Are you a U.S. citizen? 1 ☐ Yes 2 ☐ No If foreign, indicate country Visa Type
11. If immigrant or permanent resident, give your Alien Registration Number
12. Ethnic information (UNM is required by federal law to request this information. Your response in voluntary.)
- 1 ☐ American Indian 4 ☐ Hispanic/Spanish American
2 ☐ African American 5 ☐ White/non-Hispanic
3 ☐ Asian or Pacific Islander

13. Please give name/state of high school attended and graduation date _____
- Name _____ State _____
- Month _____ Year _____
14. If not a high school graduate, have you earned a G.E.D. certificate? ☐ Yes ☐ No If yes, give date _____
- month/year
15. Indicate when you took or plan to take college entrance exams: ACT _____/_____/_____ SAT _____/_____/_____
- mo. yr. mo. yr.
16. Application for 3 ☐ Fall 5 ☐ Spring 2 ☐ Summer ☐ ☐ ☐ ☐ ☐
17. Have you previously applied to The University of New Mexico main campus or branch campus? ☐ Yes ☐ No When? _____
18. Have you previously attended The University of New Mexico main campus or branch campus? ☐ Yes ☐ No Where? _____
19. THIS PORTION MUST BE COMPLETED IF YOU HAVE ATTENDED ANY COLLEGE OR UNIVERSITY. LIST ALL COLLEGES AND UNIVERSITIES ATTENDED IN ANY STATUS. INCLUDE ENROLLMENTS AT UNM AND UNM BRANCHES.

Name of Institution	City and State	From (month/year)	To (month/year)	Degree Received

20. Have you ever been denied admission to UNM for degree status? ☐ Yes ☐ No
21. Have you ever been suspended from any college or university (including UNM) for any reason? ☐ Yes ☐ No
- If yes, give institution and date of suspension _____
Institution Date
- ☐ Academic ☐ Disciplinary

Continued on back

APPLICATION FOR ADMISSION

22. How much education do you plan to obtain?

- ☐ Classes Only
- ☐ One to two-year certificate of diploma program
- ☐ Two-year college degree
- ☐ Four-year college degree
- ☐ Graduate or professional study beyond four-year degree

23. Which of the following is the most important reason for attending classes this term?

- | | |
|----------------------------------------------------------------------------|--------------|
| <input type="checkbox"/> Learn skills to get a new job | Other: _____ |
| <input type="checkbox"/> Learn skills to advance in my current job | _____ |
| <input type="checkbox"/> Transfer to a four-year college | _____ |
| <input type="checkbox"/> Satisfy general education requirements | _____ |
| <input type="checkbox"/> Improve basic skills in English, reading, or math | _____ |
| <input type="checkbox"/> Take courses for personal interest | _____ |

24. In which program do you wish to enroll: (see insert)

A non-refundable \$15.00 fee is required for degree applicants.

AA in _____

AS in _____

AAS in _____

Certificate in _____

____ Unclassified

____ Non-Degree

For what financial aid are you applying?

☐ Veterans Benefits (VA)

☐ Tribal Scholarship

☐ Pell Grant

☐ Other

☐ None

If you are claiming New Mexico residency for in-state tuition classification, you must complete the following section.

Failure to provide complete information will result in automatic non-resident status. Every question must be answered.

If you are under 23 years old or answered yes to question 33, you must also provide your parents information for questions 25-32.

If you are claiming residency because your spouse is a New Mexico resident, you must also provide spouse information for questions 25-32.

Under these circumstances, failure to complete the "Parents/Guardian/Spouse" section will also result in automatic non-resident status.

	Yourself	Parents/Guardian/Spouse
25. What state do you regard as your permanent home?	<input type="checkbox"/> Yes <input type="checkbox"/> No	<input type="checkbox"/> Yes <input type="checkbox"/> No
26. Have you lived in New Mexico for the past 12 months?	<input type="checkbox"/> Yes <input type="checkbox"/> No	<input type="checkbox"/> Yes <input type="checkbox"/> No
27. Dates and reasons you have been absent from the state longer than one month in the past two years:	Dates: _____ Reason: _____	Dates: _____ Reason: _____
28. Are you a registered voter? List state and date of registration:	<input type="checkbox"/> Yes <input type="checkbox"/> No State _____ /Date _____	<input type="checkbox"/> Yes <input type="checkbox"/> No State _____ /Date _____
29. Do you have a current driver's license? List state and date issued:	<input type="checkbox"/> Yes <input type="checkbox"/> No State _____ /Date _____	<input type="checkbox"/> Yes <input type="checkbox"/> No State _____ /Date _____
30. Do you own a vehicle? List state and date of registration:	<input type="checkbox"/> Yes <input type="checkbox"/> No State _____ /Date _____	<input type="checkbox"/> Yes <input type="checkbox"/> No State _____ /Date _____
31. Have you filed New Mexico tax returns? List Calendar years you have filed:	<input type="checkbox"/> Yes <input type="checkbox"/> No State _____ /Date _____	<input type="checkbox"/> Yes <input type="checkbox"/> No State _____ /Date _____
32. List employers and dates of employment during the last two years.	Employer: _____ Dates: _____ to _____ Employer: _____ Dates: _____ to _____	Employer: _____ Dates: _____ to _____ Employer: _____ Dates: _____ to _____
33. Did your parents or guardian claim you as a dependent on federal income tax returns in the immediate past tax year? <input type="checkbox"/> Yes <input type="checkbox"/> No If yes, who: <input type="checkbox"/> mother <input type="checkbox"/> father <input type="checkbox"/> guardian If yes, answer questions 25-32 for parents or guardian. If under the age 23 you may be asked to submit page one of parent's or guardian's 1040 or 1040A federal income tax form for the immediate past year.		
34. Are you a non-resident married to a New Mexico resident? <input type="checkbox"/> Yes <input type="checkbox"/> No If yes, answer questions 25-32 for Spouse. Proof of marriage must also be submitted.		
35. Do you intend to maintain permanent New Mexico residence? <input type="checkbox"/> Yes <input type="checkbox"/> No		
36. Are you a member or a dependent of a member of the US Armed Forces who is stationed in New Mexico? <input type="checkbox"/> Yes <input type="checkbox"/> No NOTE: Members of the US Armed Forces assigned to active duty within the exterior boundaries of New Mexico or their spouses or dependents may claim residence for tuition purposes during the period of active duty assignment within the state. Information concerning documents required to support claims to residence for tuition purposes on this basis is available in The Office of Admissions/Registrar.		

I certify that all information given in this application is complete and accurate to the best of my knowledge. If I am accepted as a student at the University of New Mexico, I agree to conform and abide by the letter and spirit of all rules, regulations, and procedures of the University. Misrepresentation in any statement by the applicant or failure to abide by University academic regulations will be considered adequate grounds for denying admissions, for cancellation of registration, or for suspension from the University.

SIGNATURE

DATE

The University of New Mexico-Valencia Campus does not discriminate with regard to race, culture, ancestry, color, religion, sex, creed, handicap, or national origin in programs or hiring. To comply with the Americans with Disabilities Act and the Rehabilitation Act of 1973, the Valencia Campus provides the information contained in this publication in alternative formats. If you have special needs and require an auxiliary aid or service, please contact the Student Enrichment Center at 925-8900.

The University is an Affirmative Action/Equal Opportunity Institution

FINAL EXAM SCHEDULE – SPRING 2007

English 099 and 100 skills exams will be held in class on Monday, April 30 and Tuesday, May 1. English 099 and 100 essay exams will be held in class Wednesday, May 2 and Thursday, May 3 during regular class times. English 101 and English 102 will have no essay exams. The English make-up exam, which requires instructor permission, is on Monday, May 7, 6:00pm - 8:30pm. Students must sign up in the Academic Office. Check in the Academic Office for location.

If your class meets on:		Your final exam will be on:		From:	
MW	8:30a	Monday, May 7	8:30a – 10:30a		
M	9:00a	Monday, May 7	9:00a – 11:00a		
W	9:00a	Monday, May 7	9:00a – 11:00a		
MW	9:00a	Monday, May 7	9:00a – 11:00a		
M	10:00a	Wednesday, May 9	10:00a– 12:00p		
W	10:00a	Wednesday, May 9	10:00a– 12:00p		
MW	10:00a	Wednesday, May 9	10:00a– 12:00p		
M	10:30a	Wednesday, May 9	10:30a– 12:30p		
W	10:30a	Wednesday, May 9	10:30a– 12:30p		
MW	10:30a	Wednesday, May 9	10:30a– 12:30p		
MW	12:00p	Monday, May 7	12:00p - 2:00p		
MW	12:30p	Monday, May 7	12:30p - 2:30p		
M	1:00p	Monday, May 7	1:00p – 3:00p		
W	1:30p	Wednesday, May 9	1:30p – 3:30p		
MW	1:30p	Wednesday, May 9	1:30p – 3:30p		
MW	2:30p	Monday, May 7	2:30p – 4:30p		
M	3:00p	Monday, May 7	3:00p – 5:00p		
W	3:00p	Wednesday, May 9	3:00p – 5:00p		
MW	3:00p	Monday, May 7	3:00p – 5:00p		
M	3:30p	Monday, May 7	3:30p – 5:30p		
M	4:30p	Monday, May 7	4:30p – 6:30p		
W	4:30p	Wednesday, May 9	4:30p – 6:30p		
MW	4:30p	Wednesday, May 9	4:30p – 6:30p		
M	6:00p	Monday, May 7	6:00p – 800p		
W	6:00p	Wednesday, May 9	6:00p – 800p		
MW	6:00p	Monday, May 7	6:00p – 8:00p		
MW	6:30p	Monday, May 7	6:30p – 8:30p		
M	7:30p	Monday, May 7	7:30p – 9:30p		
W	7:30p	Monday, May 7	7:30p – 9:30p		
MW	7:30p	Wednesday, May 9	7:30p – 9:30p		
TTH	8:30a	Tuesday, May 8	8:30a – 10:30a		
T	9:00a	Tuesday, May 8	9:00a - 11:00a		
TTH	9:00a	Tuesday, May 8	9:00a – 11:00a		
TTH	10:00a	Thursday, May 10	10:00a – 12:00p		
T	10:30a	Tuesday, May 8	10:30a – 12:30p		
TH	10:30a	Thursday, May 10	10:30a – 12:30p		
TTH	10:30a	Thursday, May 10	10:30a – 12:30p		
T	12:00p	Tuesday, May 8.	12:00p – 2:00p		
TH	12:00p	Thursday, May 10	12:00p – 2:00p		
TTH	12:00p	Tuesday, May 8	12:00p – 2:00p		
T	12:30p	Tuesday, May 8.	12:30p – 2:30p		
TH	12:30p	Thursday, May 10	12:30p – 2:30p		
TTH	12:30p	Tuesday, May 8	12:30p – 2:30p		
T	1:30p	Thursday, May 10	1:30p – 3:30p		
TTH	1:30p	Thursday, May 10	1:30p – 3:30p		
TH	2:30p	Tuesday, May 8	2:30p – 4:30p		
TTH	2:30p	Thursday, May 10	2:30p – 4:30p		
T	3:00p	Tuesday, May 8	3:00p – 5:00p		
TH	3:00p	Thursday, May 10	3:00p – 5:00p		
TTH	3:00p	Tuesday, May 8	3:00p – 5:00p		
T	3:30p	Tuesday, May 8	3:30p – 5:30p		
TH	3:30p	Thursday, May 10	3:30p – 5:30p		
TTH	3:30p	Tuesday, May 8	3:30p – 5:30p		
T	4:30p	Tuesday, May 8	4:30p – 6:30p		
TH	4:30p	Thursday, May 10	4:30p – 6:30p		
TTH	4:30p	Thursday, May 10	4:30p – 6:30p		
TH	5:00p	Thursday, May 10	5:00p – 7:00p		
T	6:00p	Tuesday, May 8	6:00p – 8:00p		
T	6:30p	Tuesday, May 8	6:30p – 8:30p		
TH	6:00p	Thursday, May 10	6:00p – 8:00p		
TTH	6:00p	Tuesday, May 8	6:00p – 8:00p		
TH	6:30p	Thursday, May 10	6:30p – 8:30p		
TTH	7:30p	Thursday, May 10	7:30p – 9:30p		
TH	7:30p	Thursday, May 10	7:30p - 9:30p		
F	9:00a	Friday, May 11	9:00a – 11:00a		
F	12:00p	Friday, May 11	12:00a – 2:00p		



280 La Entrada Rd.
Los Lunas, NM 87031
(505) 925-8500
www.unm.edu/~unmvc

UNM-VALENCIA CAMPUS PHONE NUMBERS

Valencia Campus has many resources to assist you. The following is a guide for your convenience. We are here to serve you!

General Information: 925-8500

When you need information, or have any questions, about:	Call
Academic Office.....	925-8600
Adult Basic Education	925-8900
Advisement & Counseling Center	925-8560
Adding/Dropping A Class	925-8580
Address/Name Change	925-8580
Admissions	925-8580
Bookstore.....	925-8801
Business & Technology.....	925-8700
Cafeteria/Food Orders	925-8811
Career Services	925-8560
Cashiers.....	925-8520
Challenging A Course	925-8580
Child Care Center.....	925-8870
Class Schedule Copy	925-8580
Class Cancellations	925-8600
Community Education.....	925-8970
Concerns or Complaints About Classes/Instructors	925-8600
Cooperative Education/Internships	925-8560
Degree Checks	925-8560
Development Office.....	925-8550
Enrollment Verification	925-8580
Executive Director's Office	925-8540
Facilities	925-8565
Financial Aid (Workstudy, Grants, Loans, Scholarships)	925-8590
Financial Aid Checks	925-8520
Fine Arts	925-8722
GED Classes, Assessment, Pre-Test	925-8900
GED Examination Scheduling	925-8560
Graduation Petition	925-8560
Human Resources.....	925-8530
ID Cards	925-8560
Instructor Locator	925-8600
Learning Resource Center	925-8900
Library.....	925-8990
Lost and Found	925-8570
Placement Testing	925-8560
Public Affairs	925-8545
Refund Inquiries	925-8520
Registration/Enrollment	925-8580
Security	925-8570
Small Business Development Center.....	925-8980
Student Employment Checks	925-8520
Student Employment Service	925-8560
Student Enrichment Center.....	925-8900
Student Services.....	925-8560
Student Senate	925-8560
Student Support Services Program (onTRAC SSS/TRIO).....	925-8574
Tech Prep Consortium	925-8717
Transcripts	925-8580
Transferring to Main Campus	925-8580
Tutoring	925-8900
Upward Bound.....	925-8861
Veteran Affairs	925-8580
Wellness Center.....	925-8830
WIA Program	925-8959