

CASA PASTORAL

Santa Fe

Casa Pastoral is the end product of a long and enduring friendship, whose creation embodies all the natural grace and quiet elegance of northern New Mexico. The 6,000 square foot adobe home is the result of the collaboration of long-time friends Lee Pittard, builder/developer, Kim Pittard, interior designer/decorator, and the late Ron Hutchinson, architect/developer, and his wife Barbara.

The home was conceived and designed to serve as the Pittard family's permanent residence near Santa Fe. Although Pittard's construction companies had built some 800 single family homes, townhomes and apartments (interiors designed and decorated by Kim Pittard), the couple had never built a home specifically as a residence for their family.

The relationship between builder and architect started seventeen years before during the summer after their first year in college when the two worked together on their first serious business venture. The name of the venture was College Town Enterprises, whose product was blotter-type desk pads designed for formica desk tops in college dormitory rooms. Pittard was the organizer, promoter and salesman. Hutchinson was the ad designer, layout department and commercial artist. The venture was quite a success, and so too was the long-lasting friendship.

Three years later, after each of the then young men had married and started their families, the two struggling college couples' friendship grew as the two New Mexico born collegians worked to finish their formal education at Texas Tech University in Lubbock, Texas.

Pittard: "I remember both couples were so broke - going to school and working, each with one young baby and another one on the way - the only social life we could afford was to get together on Saturday night, bring the babies, a six pack of beer, roast hot dogs and talk about the "big" plans we had when we got back to New Mexico and actually started our careers."

Years later, in 1983 when the Pittards decided to move back to Santa Fe after an eight-year stint living near Grants and building and developing in numerous communities throughout New Mexico and West Texas, they contacted their long-time friends the Hutchinsons to have Ron design their new home. Meanwhile Hutchinson had spent the last fifteen years building one of the most successful and prestigious architectural firms in the state. The awards and accomplishments of Hutchinson and





The sunken living room features Italian clay floor tile, a wet bar with German handpainted and glazed Korzilius ceramic tile, coved plaster ceilings with massive native pine vigas and one of the home's four fireplaces. The painting over the fireplace is by artist Mare Wallbridge.

The spacious master bedroom has spectacular upper level views on three sides, and features a fireplace with a beautifully detailed antique oak mantel.





The formal dining room with tongue and groove ceiling of native aspen from Northern New Mexico, the soft lines of native adobe constructions. One end opening to the upper level.

Hutchinson/Brown, Burton & Partners, Architects
Ron Hutchinson, AIA-Principal Designer
Q. Lee Pittard-BUILDER
Kim Pittard-Interior Designer
Robert Reck-Photographer
Leishman's Furniture-Furniture for Photographs

his firm, Hutchinson Brown and Partners, were numerous.

"The actual initial conceptual design," Pittard said, "was done on a napkin on Ron and Barbara's sailboat at Cochiti Lake."

After the building site was selected and a detailed topographical survey was completed, the design process began in earnest. Many of the features in the home were borrowed from the Pittards' former residence, which was located twenty miles south of Grants and was built by the late movie star Ann Baxter (granddaughter of Frank Lloyd Wright).

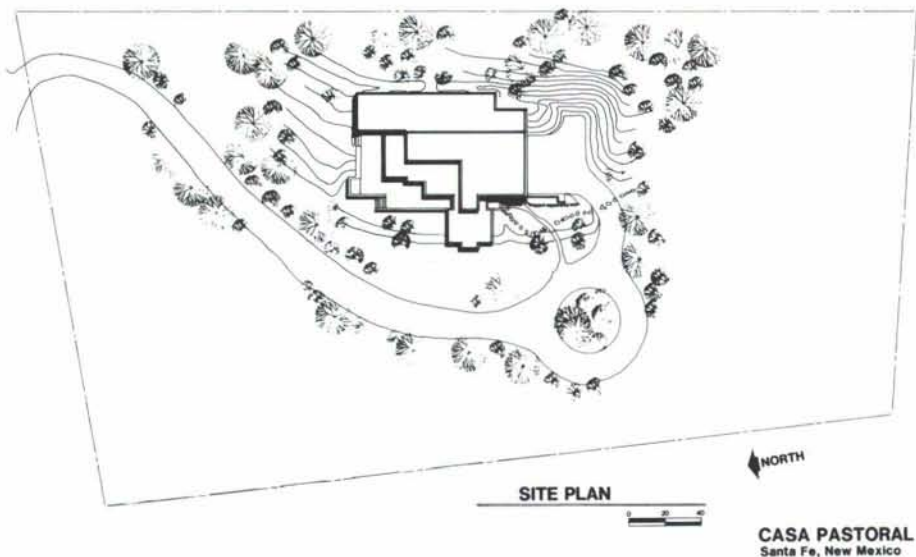
As owner/builder, Lee Pittard was concerned with aspects of structural integrity, especially in light of combining the major building elements of large timbers, adobe block, and exposed concrete bond beams. There was also a primary desire that the plan conform as much as practical to the existing terrain and plant life and that most if not all building materials be indigenous to the area, utilizing the craftsmanship of skilled native artisans in the area.

Kim Pittard had primary responsibility for developing the interior design theme and floor plan utilization, as well as all finish materials and color selections. The country French theme that utilizes a backdrop of soft, warm white walls made especially for the display of art, is accentuated by golden oak woodwork and polished brass hardware and fixtures. The generous use of subtle, almost primitive handpainted tiles in muted colors is in tasteful contrast with the massive vigas set in highcoved plaster ceilings.

Hutchinson was not only a very talented designer and technician, but he also possessed an extremely well developed sensitivity to the aesthetic and design concepts desired by his old friends and clients. He was able to bring together the interior design theme sought by Kim Pittard and the structural and exterior features sought by Lee Pittard, all the while dealing with the practical space needs and utilization of the home by a family of two teenagers, two adults, and periodic house guests. He was able to capitalize in every sense on all of the spectacular views and create areas for combined indoor and outdoor living. Although the home is truly a work of art, relatively large, and has many massive features, it maintains a very intimate, warm and friendly quality and a real sense of practicality and efficiency for everyday living. It is in a very real sense an ongoing



The kitchen, a blend of function and elegance, features a large "restaurant sized" Wolfe range, two ovens, a full sized griddle, large hood and exhaust fan, a 48" side by side Sub Zero refrigerator/freezer, as well as top of the line G.E. Microwave oven, dishwasher, trash compactor and garbage disposal. Overhead illuminated oak cabinets with leaded glass door panels and glass shelves complement the German Korzilius ceramic tiles and solid butcher block informal bar top.



expression of Ron's extraordinary talent and sensitivity.

Not long after construction began, in January 1984, Ron at the age of 36, suffered a fatal heart attack and died. He is survived by his wife Barbara and two children, and numerous friends and colleagues who will long remember his special qualities. Casa Pastoral is his last work, and represents a culmination of his award-winning design work in the field of Southwestern architecture.

Casa Pastoral is situated on a three-acre site covered with native piñon and juniper trees. Field stone has been used throughout the grounds to build traditional rock walls in keeping with the special effort to integrate the home into the beautiful natural surroundings. The panoramic view from this mountainside setting overlooks the picturesque upper Rio Grande Valley. The view of the valley and adjoining mountains includes sites of the earliest Spanish exploration and settlement in North American.

The interior plaster throughout this home is indeed a work of art; William Simbola of Picuris Pueblo was the plaster artisan. The method of "hard trowel" plastering is a multi-layer labor-intensive art form most highly developed in northern New Mexico. The "coved" plaster ceilings between the vigas (main roof support timbers) are especially difficult and equally elegant. The vigas range in diameter from 12" to 36" and are native pines from northern New Mexico. The latillas at the balconies and the tongue-and-groove ceiling in the formal dining room are native aspen from northern New Mexico. The interior doors are all pegged solid native pine. The massive front doors and side panels are two-inch-thick oak encasing thick antique beveled, leaded glass. Antique leaded glass is also incorporated into the oak cabinet doors in the living room. A beautiful detailed antique oak mantel encases the fireplace in the master suite. The height of the ceiling in the foyer is approximately 22 feet.

The home has: four levels; four bedrooms with individual vanities and bathing facilities and large walk-in closets in each room; four fireplaces with one opening into both the kitchen and dining room. This doubles as an indoor barbeque grille. Special bathing facilities include a full steam bath and shower in the master suite and a year-round outside hot tub located on the northwest patio.

The kitchen is designed for food preparation for large or small groups alike. It includes a large "restaurant size" Wolfe range, a large built-in hood, a 48" wide side-by-side SubZero refrigerator/freezer, G.E. Microwave Oven, dishwasher, trash compactor and garbage disposal. The overhead oak cabinets have leaded glass door panels, glass shelves, and are lighted.

The Great Southwest Kitchen Co.

7216 Washington NE/Albuquerque, New Mexico 87109

MANUFACTURERS OF
Custom Cabinetry



NATURAL HARDWOODS OR
EXQUISITE DECORATIVE LAMINATE

345-2431

BUILD INTERIOR &



EXTERIOR WALLS

with initial savings that grow with age!

Spectra-Glaze II® The only glazed block with more than 3 decades of proven performance. Permanent, sanitary glazed finish. Practically no maintenance. Energy & insurance savings too. Meets Gov't specs. Wide range of color, texture, form, scale & pattern. © 4.4 Bu in SWEET'S.

PRE-FACED
CONCRETE
MASONRY UNITS

NO REFURBISHING!
ASK FOR COST COMPARISONS
AND CASE HISTORIES . . .

FEATHERLITE BUILDING PRODUCTS CORP.,
Box 489, Lubbock, TX 79408

FEATHERLITE BUILDING PRODUCTS, Box 9977, El Paso, TX 79990 806/763-8202
CREGO BLOCK CO., INC., 6026 2nd St. NW, Albuquerque, NM 87107 915/859-9171
BUILDERS BLOCK, Box 1633, Roswell, NM 88201 505/345-4451
BUILDERS BLOCK, Drawer FF, Las Cruces, NM 88001 505/622-1321
505/525-3633



Introducing the DraftPro Plotter

Quality Graphics for Your Personal CAD System

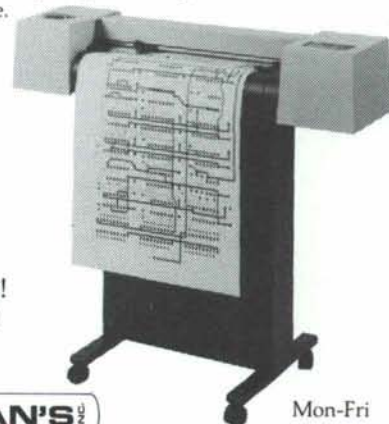
Hewlett-Packard offers the solution you (and your personal CAD system) have been waiting for ... the new HP DraftPro.

- Plots on A2/C- and A1/D-size single sheets (and the architectural equivalents) of paper, vellum, and polyester film.
- Holds an 8-pen carousel for fiber-tip, refillable liquid-ink, and disposable liquid-ink pens.
- Compatible with IBM, Apple, and Hewlett-Packard computers.
- Supported by the leading software packages.
- Provides traditional HP quality, reliability, and service at an untraditional low price.

**hp HEWLETT
PACKARD**

**hp PERSONAL
COMPUTATION
DEALER**

Ask for a
demonstration today!
505•285-7981



HOLMAN'S
401 WYOMING NE
ALBUQUERQUE, N.M. 87123

Mon-Fri
8:00-5:30
Sat
10:00-3:00



WOODEN
IT BE
NICE?
IT IS.

Our 10,000 square
foot milling plant
produces fine wood
moldings in an almost
unlimited array of species

Your design, our design or
matching designs for restoration.
Kitts makes it. And at prices that
make it nice.

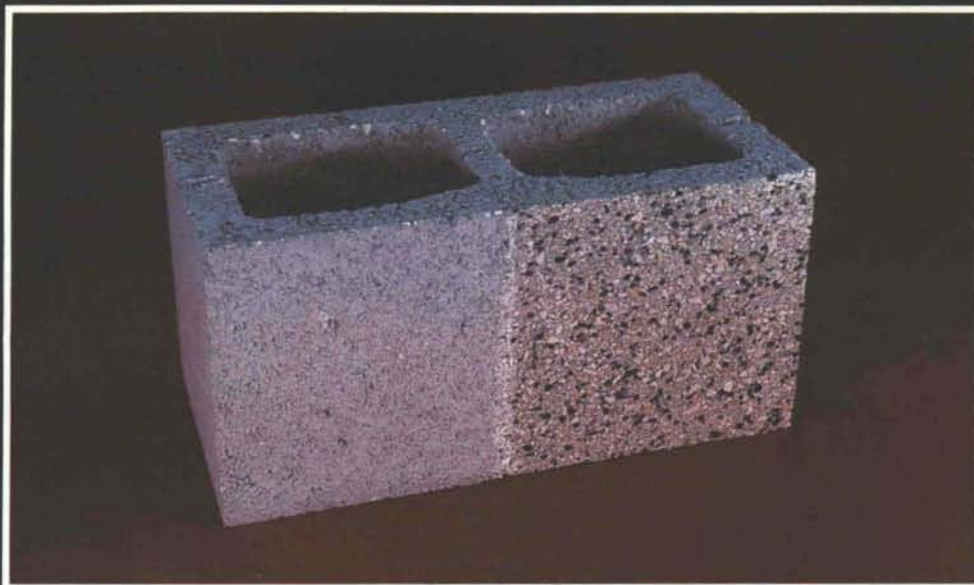
KITTS ENTERPRISES, INC.
SPECIALTY MATERIALS AND HARDWARE FOR ARCHITECTS,
CABINET MAKERS AND CONTRACTORS
(505) 345-8135

5815 EDITH BOULEVARD NE • ALBUQUERQUE, N.M. 87125
CALL US TOLL FREE:

New Mexico: 1-800-432-6820 • Other States: 1-800-545-6104

LOUISIANA
CONCRETE

Builders
BLOCK Co.



FEATHERLITE

... a Justin Company

Introducing...

Burnished Masonry Units



1. Financial Center.
Minneapolis, Minn.
2. Financial Center, detail
. Minneapolis, Minn.



AN EXCITING ALTERNATIVE —
Burnished Masonry Units create buildings of distinctive character.

AN ATTRACTIVE VALUE —
Build today with low installed cost. Save tomorrow with easily maintained surfaces and little refinishing required.

A DURABLE CHOICE —
Concrete masonry assures quality construction, and burnished surfaces offer the lasting beauty of stone.

AN OPTION FOR DESIGN —
Choose one or two vertically raked scores, or use full face of unit, to achieve desired design effect.

A VERSATILE MATERIAL —
Burnished Masonry Units serve well as interior and exterior surfaces for many types of buildings. They have been used for schools, colleges, office buildings, hospitals, churches, banks, apartments and detention facilities.



NEAR GRANITE PINK—
like nature's pink granite.



MOSTLY TERRAZZO LOOK—
The looks of high cost terrazzo work.



LIKE POLISHED LIMESTONE—
The appearance of natural limestone. Polished to an unsurpassed smoothness.



ALMOST ONYX GRAY—
a deep dark gray color polished to a fine exciting deep finish.

SPECIFICATIONS

Burnished Masonry Units shall:

- a. comply with ASTM C-90 Specifications for Hollow Load Bearing Concrete Masonry Units or C-129 for non-loadbearing Concrete Masonry Units.
- b. be made of Aggregate conforming to ASTM C-33 or ASTM C-331.
- c. be of the Color & Burnished Texture as submitted by the manufacturer and approved by the Architect.
- d. include an integral water-repellent agent as determined by the manufacturer.
- e. include (when specified) coloring agents of natural or synthetic oxides that are pure, inert and non-fading.
- f. maintain 1/16" tolerance in block width.
- g. have a factory applied coating of a clear unpigmented sealer.
- h. on scored units, be tuckpointed & tooled by the jobsite mason, with a mortar matching the mortar used in laying the masonry units.

BURNISHED MASONRY UNITS

Nature of Product:

Burnished Masonry Units as manufactured by Featherlite are made from natural and manufactured aggregates, sand, limestone, gravel, cement, and color. These are all products that are derived from nature and they vary in size, shape, texture, and uniformity of particle color.

Products of nature may have salt in them which may contribute to efflorescence.

Care is taken in the manufacturing process to use the finest materials available, but some variation in color, texture and uniformity and the occasion of efflorescence should be anticipated in the final product.

It is the nature of Burnished Concrete Masonry Units to have edge and corner chips; this is a natural characteristic of this product. A sample panel shall be built on the jobsite showing the range of texture, color, and aggregate exposure.

Cleaning:

The mason's attention is called to the importance of a clean wall. Keeping the wall clean as the work progresses results in a better job and simplifies final cleanup. Cleaning is a daily process. The Burnished Masonry Units are manufactured with a clear acrylic coating. This coating aids in keeping the units clean during construction.

Prior to application, on the jobsite, of the field applied water-repellent; the mason should clean the masonry units with a solution of Sure-Klean 600, mixed according to the directions of manufacturer. This should be done as job is completed.

Water-repellency:

The Burnished Masonry Units have an integral water-repellent agent built into them; further, they have a clear acrylic coating when delivered.

We recommend, for exterior exposure, that the mortar also have an integral water-repellent agent; additionally, Burnished Masonry Units should have a clear coating of a non-yellowing water-repellent material, applied by contractor, to protect the completed wall assembly.

FEATHERLITE
... a Justin Company

Featherlite Marketing Department
P.O. Box 31058 • Amarillo, Texas 79120 • 806/373-6766



The kitchen fireplace opens into both kitchen and dining room. The old bricks are from demolished buildings in downtown Santa Fe where the Inn at Loretto stands now.

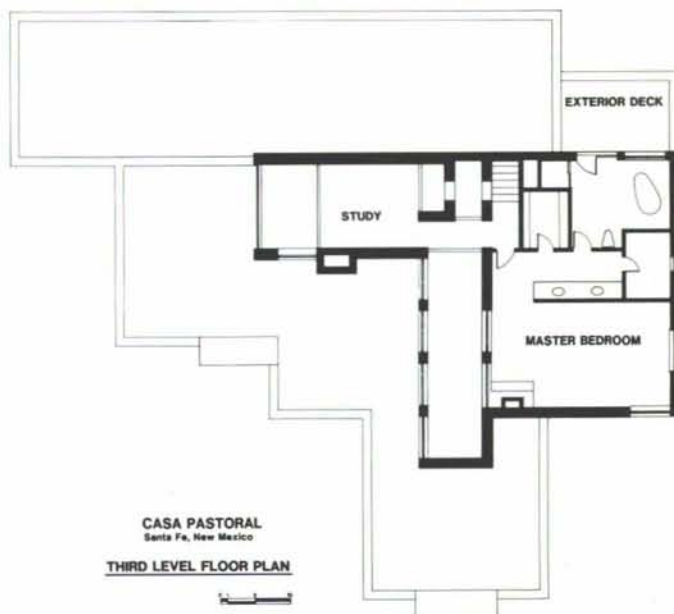
Another unique feature is the specially designed Chef's Pantry for efficiency and ease of access. An excellent food preparation/serving area has been created with the 16 foot long butcher block bar top. The kitchen is as functional as it is beautiful to serve two or two hundred.

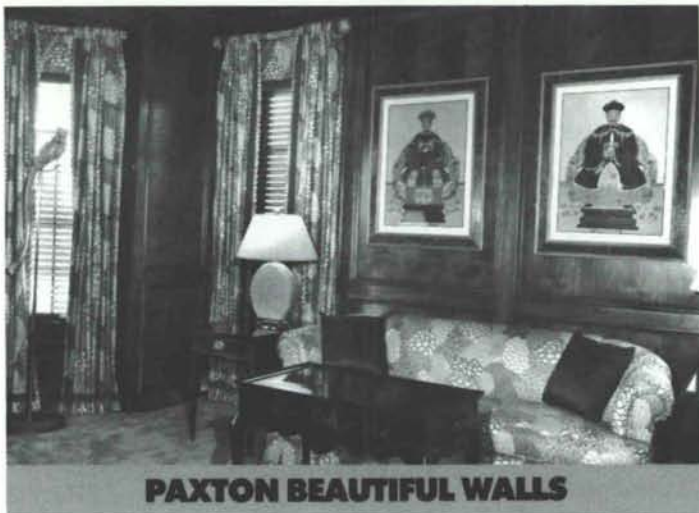
Casa Pastoral is currently owned and occupied by Santa Fe entrepreneur and banker Jerry Rogers, his wife Jean, and their one-year-old daughter Anna.

(This article was prepared by the family and friends of Ron Hutchinson.)

Square Footage and Other Data

Interior Heated Living Area
approximately 5800 square feet
Three Car Garage/Workshop
approximately 1100 square feet
Tiled Outside Patio Living Area
approximately 1500 square feet
Redwood Decked Outside Living Area
approximately 1700 square feet
Total: Approximately 10,000 square
feet of finished indoor/outdoor living
area.





PAXTON BEAUTIFUL WOODS

include the very finest stock and custom milled wood wall paneling: Tongue and groove, raised panels, hardwood, plywood, softwood, beaded ceiling, tambour and mouldings.

When you buy from Frank Paxton Lumber Company you invest in quality.

Paxton is the nation's largest distributor of high grade lumber available: fine hardwoods and cabinet softwoods of

various thicknesses, all graded and measured after careful kiln drying.

We also stock a complete line of plywood, veneers, abrasives, finishing materials, dowels, drawer sides, hardware, and more and specialize in custom paneling and millwork.

Frank Paxton Lumber Company. We've been setting standards of excellence in our industry since 1914, by pleasing professionals like you.

FRANK PAXTON LUMBER COMPANY

1909 Bellamah N.W.
Albuquerque, NM 87104
(505) 243-7891
1-800-432-9142 New Mexico
1-800-545-8386 Out of State

PAXTON
BEAUTIFUL WOODS



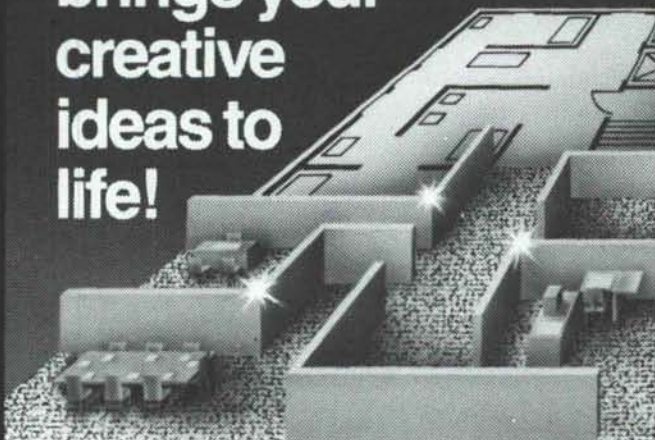
e s t i m a t i n g i n c

1420 Carlisle N.E.
Suite 202A
Albuquerque, N.M. 87110
(505) 262-2681

CONSTRUCTION COST ESTIMATES

**EXPERIENCE
TECHNOLOGY
RESULTS**

**Bigelow...
brings your
creative
ideas to
life!**



You've agonized over the concept, sweated out the plans, now it's time for the compliments. And when you specify Bigelow underfoot, you know the rug won't be pulled out from under you. We can supply and install the Bigelow carpet to complement your plans!



**american
business
interiors**

612 Central Avenue, SW
Albuquerque, New Mexico 87102
(505) 883-2055