



ALBUQUERQUE GRAVEL PRODUCTS COMPANY

**DEDICATED TO QUALITY
AND SERVICE**

600 John Street S.E. Tel. (505) 242-5265
P.O. Box 829 Albuquerque, NM 87103

**Pella has
wood windows
and doors
for every
home and office.**

**NEW CONSTRUCTION
REMODEL/REPLACEMENT**

**"When Quality Counts"
Call**

Pella Rio Grande Inc.



Albuquerque (505) 345-3501
Santa Fe (505) 984-2210
El Paso (915) 833-3066
NM Toll Free 1-800-227-5240

new mexico architecture

nma

Published bi-monthly by New Mexico Society of Architects, American Institute of Architects, a non-profit organization. Editorial Correspondence should be addressed to John P. Conron, Box 935, Santa Fe, N.M. 87504. (505) 983-6948.

Editorial Policy: Opinions expressed in all signed articles are those of the author and do not necessarily represent the official position of the publishing organization.

Additional copies of NMA available from John P. Conron, FAIA/FASID, P.O. Box 935, Santa Fe, N.M. 87504.

Change of address: Notifications should be sent to New Mexico Architecture, Box 935, Santa Fe, N.M. 87504 (505) 983-6948 at least 45 days prior to effective date. Please send both old and new addresses.

Subscriptions: Write Circulation, New Mexico Architecture, Box 935, Santa Fe, N.M. 87504. Single Copy \$3.00. Yearly subscription \$15.00.

Advertising: Send requests for rates and information to Carleen Lazzell, Advertising Editor, 8515 Rio Grande Boulevard, N.W., Albuquerque, N.M. 87114, 505/898-1391.

INDEX OF FIRMS who make possible the publication of NMA and the page upon which their message can be found:

Albuquerque Gravel Products Company	22
American Business Interiors	4
Associated Systems	23
Builders Block	6
Crego Block Co.	2
Crego Block Co.	24
Featherlite Building Products Corp.	23
Holman's, Inc.	5
Kinney Brick Company	14
Kitts Enterprises, Inc.	4
Kohler	Insert
LVB Designs	23
Mason Contractors Association of New Mexico	8
New Mexico Travertine	4
Paxton, Frank, Lumber Company	19
Pella Rio Grande Inc.	22
Rader Awning & Upholstering, Inc.	23
Santa Fe Lights	5
Security Alarm Systems, Inc.	14
Signal Systems	5
Signs Now	5
TypArt	6

Printed by Hall-Poorbaugh Press, Inc., Roswell, New Mexico

BUILD INTERIOR &



EXTERIOR WALLS

with initial savings that grow with age!

Spectra-Glaze II® The only glazed block with more than 3 decades of proven performance. Permanent, sanitary glazed finish. Practically no maintenance. Energy & insurance savings too. Meets Gov't specs. Wide range of color, texture, form, scale & pattern. © 4.4 Bu in SWEET'S.

PRE-FACED
CONCRETE
MASONRY UNITS

NO REFURBISHING!
ASK FOR COST COMPARISONS
AND CASE HISTORIES . . .

FEATHERLITE BUILDING PRODUCTS CORP.,
Box 489, Lubbock, TX 79408

FEATHERLITE BUILDING PRODUCTS, Box 9977, El Paso, TX 79990

CREGO BLOCK CO., INC., 6026 2nd St. NW, Albuquerque, NM 87107

BUILDERS BLOCK, Box 1633, Roswell, NM 88201

BUILDERS BLOCK, Drawer FF, Las Cruces, NM 88001

806/763-8202

915/859-9171

505/345-4451

505/622-1321

505/525-3633

ASSOCIATED SYSTEMS COMPUTER SYSTEMS

Want to make sure the Profit Margin
is what it should be?

Software systems that balance
Time • People • Profit

PRODUCTION SCHEDULE II

SOFTWARE

Computing Tools for Architects

Call Collect
505-294-8200

ASSOCIATED SYSTEMS

9004 Menaul NE • Suite 15
Albuquerque, New Mexico 87112



LVB DESIGNS . . .
BECAUSE
THAT'S WHAT
WE DO
BEST!

LVB DESIGN

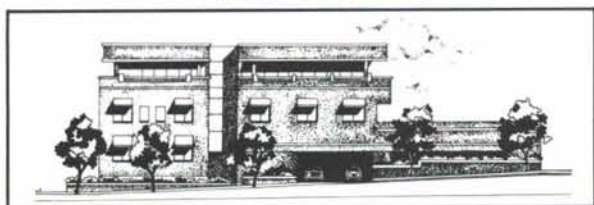
• Logos • Brochures • Catalogs • etc.
Concept/Thru Development/To The Printed Piece

FEATURING

Commercial and Residential
Renderings

BY LAURA KING

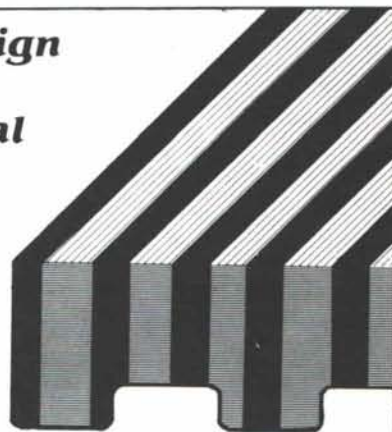
Ink, Charcoal, Pastel, Paint, etc.



834 Griegos N.W. #2 • Albuquerque, NM 87107
505/344-0377

**Custom design
for today's
architectural
needs.**

*Growing With
Albuquerque
Since 1947*



• Canvas Awnings

Commercial & residential. Custom designed & fabricated

• Upholstering

Commercial, office, patio, auto, trucks, RV's

• Tent Rentals / Sales / Repairs

Party canopies, big tops, camping

RADER AWNING & UPHOLSTERING, INC.

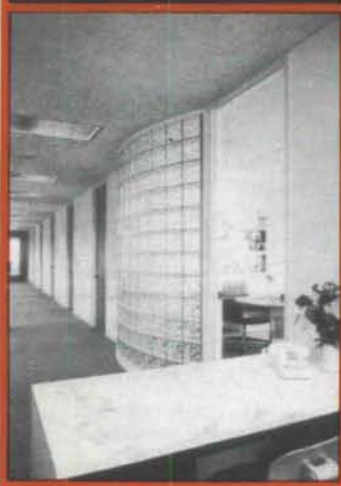
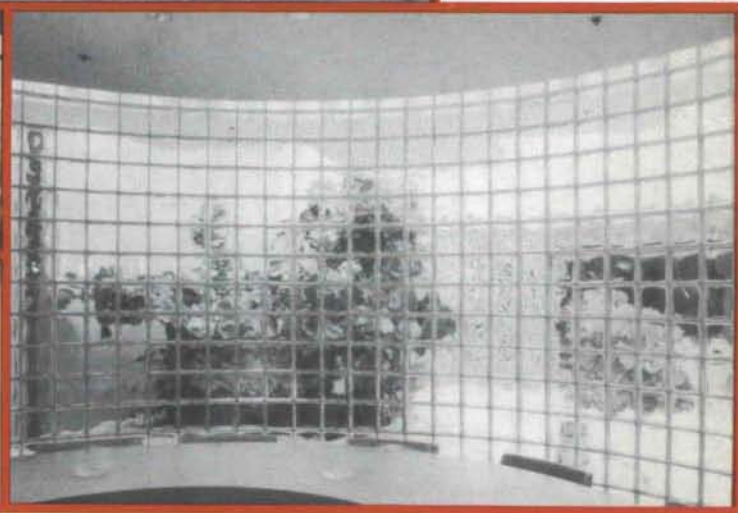
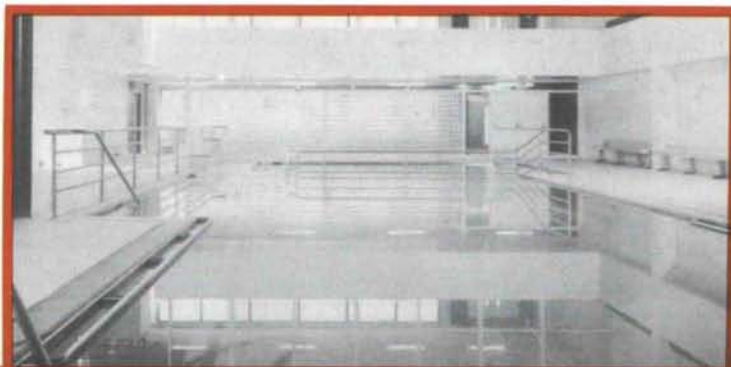
915 4th Street NW
Albuquerque, New Mexico 87102
505-243-4523

PITTSBURGH CORNING
PCGLASSBLOCK®
PRODUCTS

Postmaster: Address Correction Requested
New Mexico Architecture
8515 Rio Grande Blvd., N.W.
Albuquerque, NM 87114

Bulk Rate
U.S. Postage
PAID
Roswell, N.M.
Permit No. 47

Glass Block for the 80's ...design with confidence



DISTRIBUTORS FOR THE STATE OF NEW MEXICO
WAREHOUSED IN ALBUQUERQUE



CREGO BLOCK CO.

P.O. BOX 6466
ALBUQUERQUE, N.M. 87197

6026 SECOND STREET, N.W.
(505) 345-4451

