

SANTA FE LIGHTS

ARCHITECTURAL
LIGHTING FIXTURES
IN SOUTHWEST
ADOBE STYLE

INDOOR & OUTDOOR
WALL, CEILING AND
HANGING LIGHTS,
CHANDELIERS &
GARDEN LIGHTS

SANTA FE LIGHTS

Rt. 10, Box 88Y, Santa Fe, New Mexico 87501
(505) 471-0076 / Brochure Available



Architectural Woodworking, Inc.

P.O. BOX 9043 / 87119 • 1920 COLUMBIA SE / 87106
ALBUQUERQUE, NEW MEXICO
(505) 242-8774



*Contact us for your quality
cabinetry and millwork*

**This Space
FOR
SALE
Call:
Carleen Lazzell
505/898-1391**



new mexico architecture

nma

Published bi-monthly by New Mexico Society of Architects, American Institute of Architects, a non-profit organization. Editorial Correspondence should be addressed to John P. Conron, Box 935, Santa Fe, N.M. 87504. (505) 983-6948.

Editorial Policy: Opinions expressed in all signed articles are those of the author and do not necessarily represent the official position of the publishing organization.

Additional copies of NMA available from John P. Conron, FAIA/FASID, P.O. Box 935, Santa Fe, N.M. 87504.

Change of address: Notifications should be sent to New Mexico Architecture, Box 935, Santa Fe, N.M. 87504 (505) 983-6948 at least 45 days prior to effective date. Please send both old and new addresses.

Subscriptions: Write Circulation, New Mexico Architecture, Box 935, Santa Fe, N.M. 87504. Single Copy \$3.00. Yearly subscription \$15.00.

Advertising: Send requests for rates and information to Carleen Lazzell, Advertising Editor, 8515 Rio Grande Boulevard, N.W., Albuquerque, N.M. 87114, 505/898-1391.

INDEX OF FIRMS who make possible the publication of NMA and the page upon which their message can be found:

Albuquerque Door Company	5
Albuquerque Gravel Products Company	23
American Business Interiors	5
Architectural Woodworking, Inc.	22
Associated Systems	16
Bishop, Jim, General Contractor, Inc.	8
Bradbury & Stamm Construction Company, Inc.	16
Builders Block	23
Crego Block Co.	2
Crego Block Co.	24
Data Handling Co., Inc.	8
Featherlite Building Products Corp.	5
Holman's, Inc.	5
Innovative Concepts, Inc.	6
Kitts Enterprises, Inc.	16
Kohler	Insert
Mason Contractors Association of New Mexico	7
New Mexico Travertine	4
Paxton, Frank, Lumber Company	4
Pella Rio Grande Inc.	23
Santa Fe Lights	22
Signal Systems	16
Signs Now	23
TypArt	18

Printed by Hall-Poorbaugh Press, Inc., Roswell, New Mexico



BUILDERS BLOCK

Members:
New Mexico Concrete
Masonry Association
National Concrete
Masonry Association

**Quality Concrete Masonry Products
and many allied building materials.
Serving New Mexico and West Texas
for over a quarter of a century.**

P.O. Box 1633
Roswell, NM 88201
505/622-1321

P.O. Drawer FF
Las Cruces, NM 88001
505/524-3633

Telephone
El Paso
915/532-9695

**Pella has
wood windows
and doors
for every
home and office.**

**NEW CONSTRUCTION
REMODEL/REPLACEMENT**

**"When Quality Counts"
Call**

Pella Rio Grande Inc.

**The Pella
Window
Store®**
Windows, Doors,
Sunrooms & Skylights

Albuquerque	(505) 345-3501
Santa Fe	(505) 984-2210
El Paso	(915) 833-3066
NM Toll Free	1-800-227-5240

SIGNS NOW!

**SITE SIGNS
BANNERS
ARCHITECTURAL GRAPHICS**

1 DAY SIGN & LETTERING SERVICE

884-4555

**613 Menaul N.E.
Albuquerque, NM. 87110**



ALBUQUERQUE GRAVEL PRODUCTS COMPANY

**DEDICATED TO QUALITY
AND SERVICE**

600 John Street S.E. Tel. (505) 242-5265
P.O. Box 829 Albuquerque, NM 87103

PITTSBURGH CORNING
PCGLASSBLOCK®
PRODUCTS

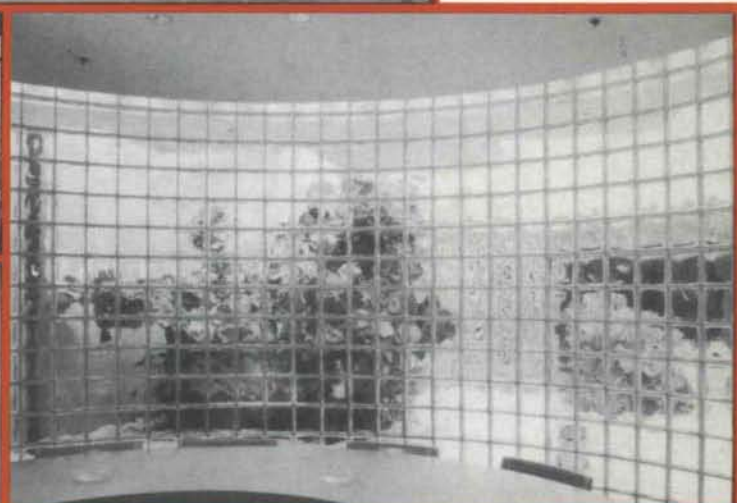
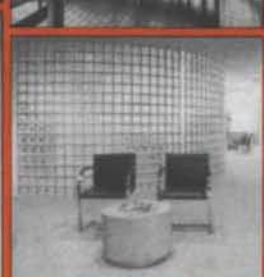
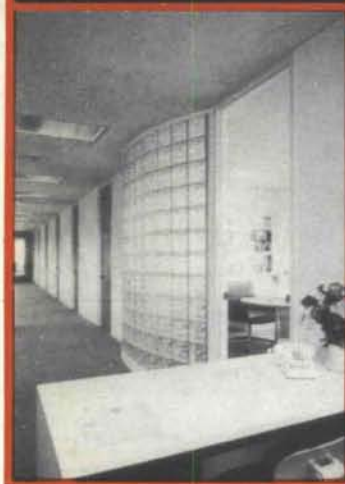
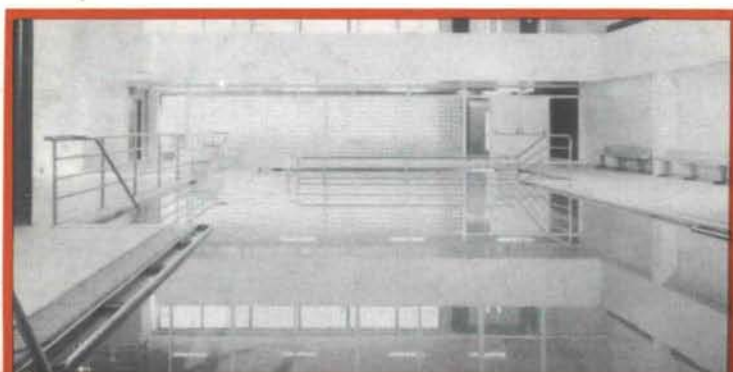
Postmaster: Address Correction Requested
New Mexico Architecture
8515 Rio Grande Blvd., N.W.
Albuquerque, NM 87114

Bulk Rate
U.S. Postage
PAID
Roswell, N.M.
Permit No. 47

00090-04 B52
FINE ARTS LIBRARY
UNM

ALBUQUERQUE NM 87131

Glass Block for the 80's ...design with confidence



DISTRIBUTORS FOR THE STATE OF NEW MEXICO
WAREHOUSED IN ALBUQUERQUE



CREGO BLOCK CO.
P.O. BOX 6466
ALBUQUERQUE, N.M. 87197

6026 SECOND STREET, N.W.
(505) 345-4451

