



BUILDERS BLOCK

Members:
New Mexico Concrete
Masonry Association
National Concrete
Masonry Association

**Quality Concrete Masonry Products
and many allied building materials.
Serving New Mexico and West Texas
for over a quarter of a century.**

P.O. Box 1633
Roswell, NM 88201
505/622-1321

P.O. Drawer FF
Las Cruces, NM 88001
505/524-3633

Telephone
El Paso
915/532-9695



ALBUQUERQUE GRAVEL PRODUCTS COMPANY

**DEDICATED TO QUALITY
AND SERVICE**

Tel. (505) 242-5265
600 John Street, S.E. P. O. Box 829
Albuquerque, N. M. 87103

new mexico architecture

nma

Published bi-monthly by New Mexico Society of Architects, American Institute of Architects, a non-profit organization. Editorial Correspondence should be addressed to John P. Conron, Box 935, Santa Fe, N.M. 87501. (505) 983-6948.

Editorial Policy: Opinions expressed in all signed articles are those of the author and do not necessarily represent the official position of the publishing organization.

Additional copies of NMA available from John P. Conron FAIA/ FASID, P. O. Box 935, Santa Fe, N.M. 87501.

Change of address: Notifications should be sent to New Mexico Architecture, 401-C Val Verde, S. E., Albuquerque, N.M. 87108 (505) 265-7010 at least 45 days prior to effective date. Please send both old and new addresses.

Subscriptions: Write Circulation, New Mexico Architecture, 401-C Val Verde, S. E., Albuquerque, N.M. 87108. Single Copy \$1.00. Yearly subscription \$5.00.

Advertising: Send requests for rates and information to New Mexico Architecture, 401-C Val Verde, S. E., Albuquerque, N.M. 87108, (505) 265-7010.

Printed by Hall-Poorbaugh Press, Inc., Roswell, New Mexico

INDEX OF FIRMS who make possible the publication of NMA and the page upon which their message may be found:

Albuquerque Gravel Products Co.	18
Albuquerque Testing Laboratory	4
Aluminum Sales Corporation	8
American Business Interiors	4
Aztec Tile and Carpet	5
Builders Block	18
Crego Block Co.	2
Featherlite Block Co.	4
Grant's Steel Sash, Door & Hardware, Inc.	19
Hydro Conduit Corporation	20
Kohler	Insert
Mason Contractors Assn. of N. M.	6
McGill Stephens Truss Joist Corp.	5
New Mexico Marble & Tile, Inc.	4
Pella Products Company of N. M.	19
Stryco Sales, Inc.	19



WOOD WINDOWS
CLAD WINDOWS

● SLIDING GLASS DOORS
● FOLDING DOORS

Pella Products Company of New Mexico

RESIDENTIAL, INSTITUTIONAL, COMMERCIAL

P.O. Box 3311, Albuquerque, New Mexico 87190 • Phone (505)345-3501

QUALITY... ...SERVICE

Call us for building products made by people you know. We distribute steel doors and frames made by **CURRIES**, finish hardware made by **STANLEY**, **SARGENT**, and other quality manufacturers- and we give **SERVICE**.

Grant's

STEEL SASH, DOOR & HARDWARE, INC.
2529 & 2530 FIRST ST. NW - 505/247-8460
ALBUQUERQUE, N.M. 87102

Congoleum® FLOR-EVER®

COMMERCIAL VINYL FLOORING



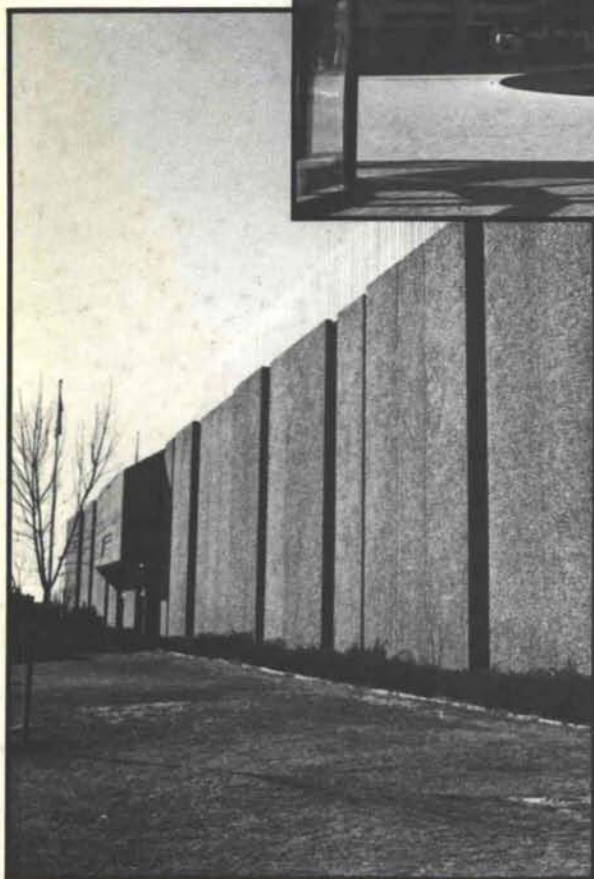
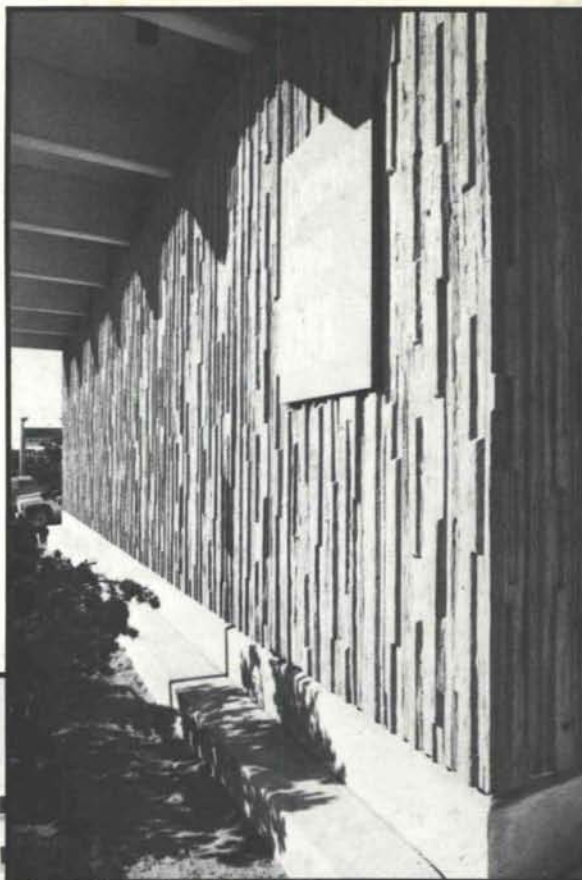
TRAVERTINE

Travertine is commercial flooring at its best...designed like no other floor to meet the changing commercial needs and demands, including virtually seamless installations in most applications. Here is a beautiful and delicate reproduction of a natural material...reproduced as never before. Travertine has a subdued background and a seamless tile effect that sets it apart from traditional commercial flooring. Available in 9' and 12' widths and 12 color choices.



125 DALE, S.E.
P.O. BOX 25111, ALBUQUERQUE, NM 87125
PHONE 877-5340

- **Durable Quality**
- **Design Freedom**
- **Infinite Texture Possibilities**



These are just three of the many qualities offered by Architectural Precast from Hydro Conduit. For more information, call or write:



HYDRO CONDUIT CORPORATION

2800 Second Street NW • Albuquerque, NM 87103
(505) 247-3726