



ENGINEERING SERVICES
ALBUQUERQUE TESTING
LABORATORY...To Be Sure!

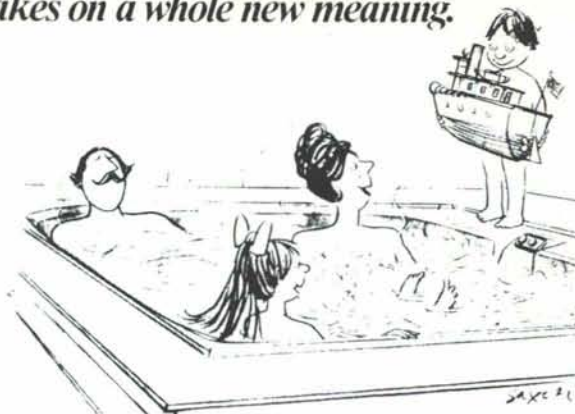
P. O. BOX 4101
 532 JEFFERSON, N.E.
 ALBUQUERQUE, N.M. 87196
 505-268-4537

SUBSOIL INVESTIGATIONS
 FIELD DENSITY
 GEOTECHNICAL ENGINEERING
 INSPECTION
 LABORATORY TESTING AND ANALYSIS
 EVALUATION OF CONSTRUCTION MATERIALS
 RESEARCH
 WELDING CERTIFICATION



All Work Done Under Supervision of
 Registered Professional Engineers

*Being in hot water
 takes on a whole new meaning.*

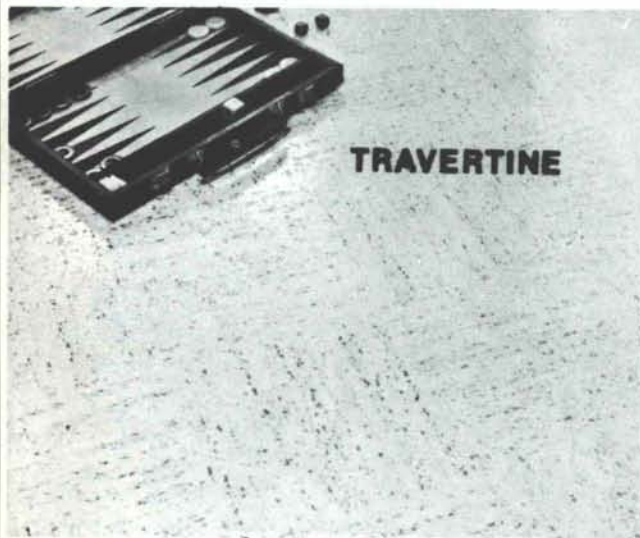


Plasco, Inc.
 2508 Monroe N.E.
 Albuquerque, New Mexico 87110
 505-256-9883

Jacuzzi
 WHIRLPOOL BATH
 Without this trademark
 it's not a Jacuzzi Whirlpool Bath

Congoleum® FLOR-EVER®

COMMERCIAL VINYL FLOORING



TRAVERTINE

Travertine is commercial flooring at its best...designed like no other floor to meet the changing commercial needs and demands, including virtually seamless installations in most applications. Here is a beautiful and delicate reproduction of a natural material...reproduced as never before. Travertine has a subdued background and a seamless tile effect that sets it apart from traditional commercial flooring. Available in 9' and 12' widths and 12 color choices.



125 DALE, S.E.
 P.O. BOX 25111, ALBUQUERQUE, NM 87125
 PHONE 877-5340

new mexico architecture

nma

Published bi-monthly by New Mexico Society of Architects, American Institute of Architects, a non-profit organization. Editorial Correspondence should be addressed to John P. Conron, Box 935, Santa Fe, N.M. 87501. (505) 983-6948.

Editorial Policy: Opinions expressed in all signed articles are those of the author and do not necessarily represent the official position of the publishing organization.

Additional copies of NMA available from John P. Conron FAIA/ FASID, P. O. Box 935, Santa Fe, N.M. 87501.

Change of address: Notifications should be sent to New Mexico Architecture, 401-C Val Verde, S. E., Albuquerque, N.M. 87108 (505) 265-7010 at least 45 days prior to effective date. Please send both old and new addresses.

Subscriptions: Write Circulation, New Mexico Architecture, 401-C Val Verde, S. E., Albuquerque, N.M. 87108. Single Copy \$1.00. Yearly subscription \$5.00.

Advertising: Send requests for rates and information to New Mexico Architecture, 401-C Val Verde, S. E., Albuquerque, N.M. 87108, (505) 265-7010.

Printed by Hall-Poorbaugh Press, Inc., Roswell, New Mexico

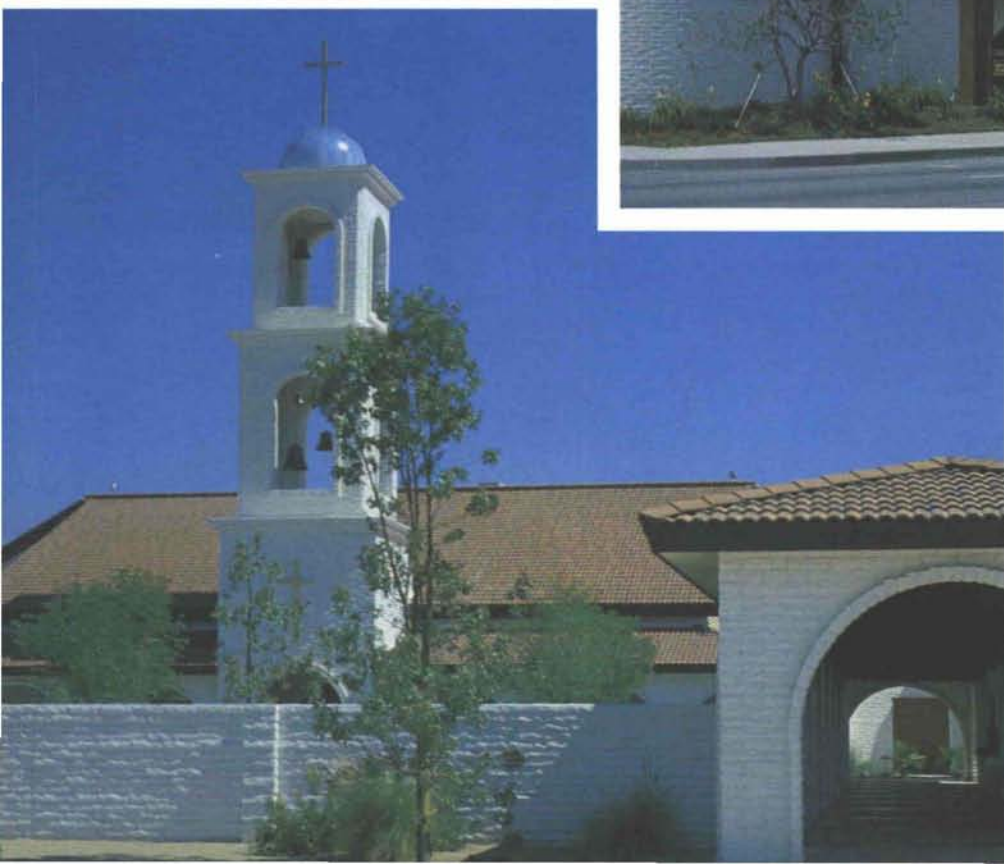
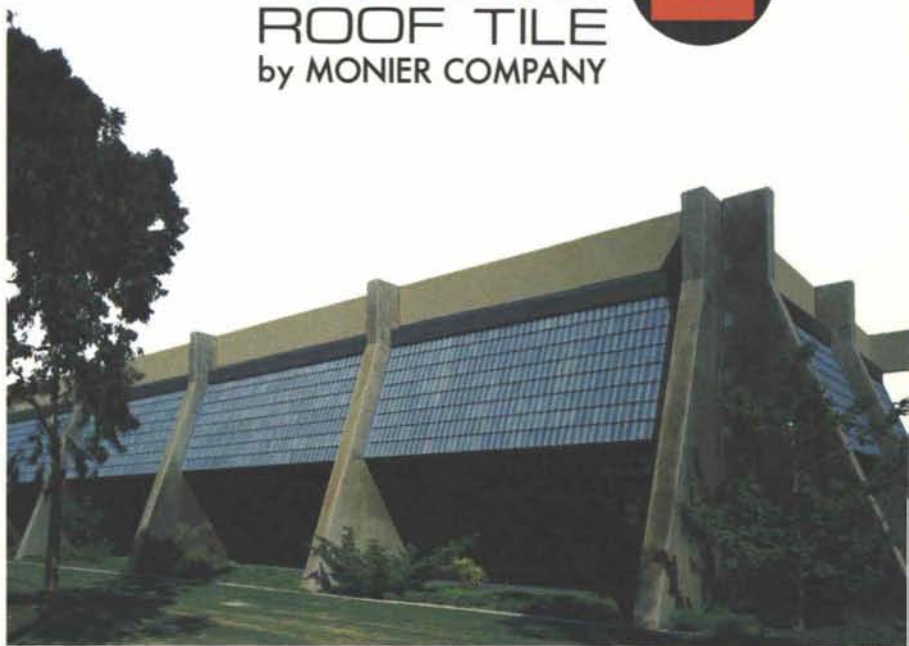
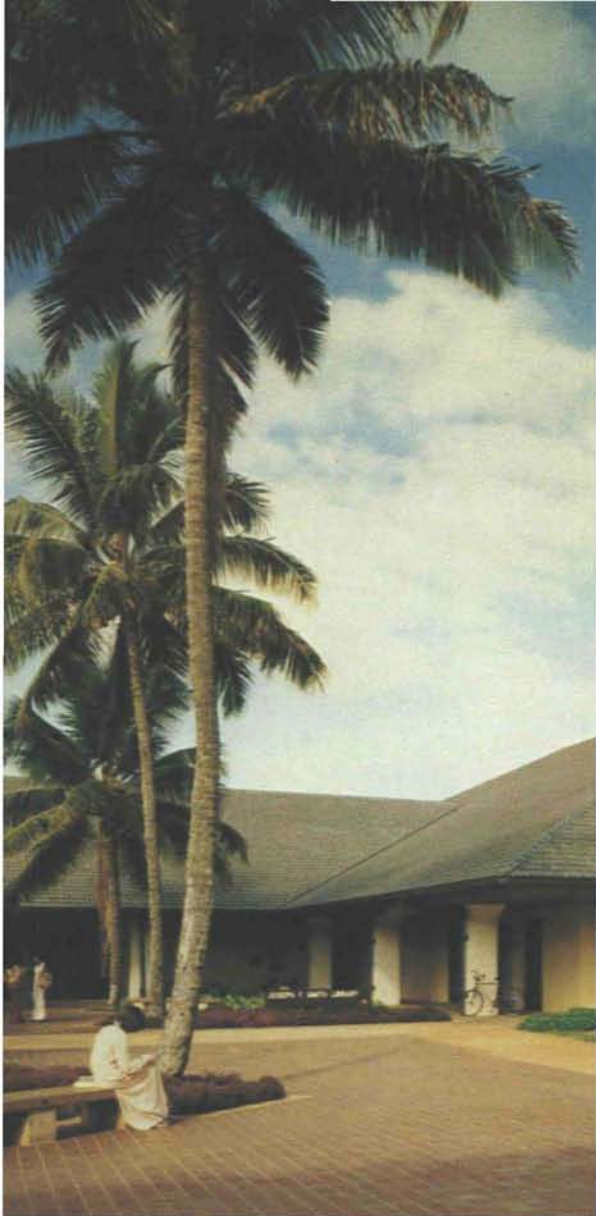
INDEX OF FIRMS who make possible the publication of NMA and the page upon which their message may be found:

Albuquerque Gravel Products Co.	17
Albuquerque Testing Laboratory	18
Aluminum Sales Corporation	5
American Business Interiors	17
Aztec Tile and Carpet	4
Builders Block	19
Crego Block Co.	2
Featherlite Block Co.	5
Grant's Steel Sash, Door & Hardware, Inc.	19
Hydro Conduit Corporation	20
Kohler	Insert
Mason Contractors Assn. of N. M.	6
McGill Stephens Trus Joist Corp.	4
Monrey Roof Tile	Insert
New Mexico Marble & Tile, Inc.	17
Pella Products Company of N. M.	19
Plasco, Inc.	18
Santa Fe Lumber & Millwork, Inc.	8
Stanley Structures	Center Insert
Stryco Sales, Inc.	18
Wellborn Paint	5

MONRAY
ROOF TILE
by MONIER COMPANY



7.7/Mon



ROOFS OF CHARACTER

RESIDENTIAL

COMMERCIAL

INSTITUTIONAL

Architects, builders and the general public are becoming more conscious of the quality and character possible in roof design. Tile has been the standard of excellence for over 4,000 years.

CONCRETE ROOF TILE

About 30 years ago a process was pioneered and perfected by Concrete Industries (Monier) Ltd. to manufacture roof tiles by extruding concrete using heavy duty automated equipment. This made possible consistently high quality and economical concrete roof tiles. During the past three decades these tiles have been thoroughly tested under climatic extremes in many parts of the world.

THE MONIER COMPANY TODAY

Monier, manufacturers of Monray Roof Tiles, is the only company licensed to use this process and equipment in the U.S.A. and is the nation's largest manufacturer of tile roofing products.

MONRAY ROOF TILE -

TODAY'S BEST VALUE

Monray tile has significant advantages to the architect, engineer, builder, financial institution, and owner of both residential and commercial buildings. No other roofing material can boast all the remarkable features of Monray tile.

BEAUTIFUL

Monray tile roofs with their rich colors and graceful curves beautify even the simplest structures. For more complex structures, Monray provides a vehicle for exciting creativity. It offers opportunity for a wide range of architectural effects—from dynamic vigor to quiet serenity—for one building or for many—accommodating any regional preference.

DURABLE

Monray tile lasts indefinitely. It has a life probability exceeding that of the structure. It is incombustible. It is immune to rot, termites or rodents. It resists sun, rain or salt spray and, being made of concrete, has the unique advantage of starting strong and growing stronger with age.

LUXURIOUS

Tile is reminiscent of opulent old-world palaces and, today, Monray tile provides both physical and visual luxury. Because Monray tile is made of very dense concrete it provides the luxury of sound control and is also adaptable to engineered systems for optimum thermal control—conductive or reflective. For example, summertime temperatures can be 20° cooler below a Monray "cool-color" roof. Most luxurious of all is the visual effect. Richly colored Monray tile is used by today's architects to create a feeling of affluence in a wide variety of structures.

ECONOMICAL

Because it is mass produced, high quality Monray tile is reasonably priced, and its long life and freedom from replacement makes its life-cycle cost extraordinarily low.



SHAKE



SLATE



VILLA



ROMA



TECHNICAL DATA*

SIZE AND COVERAGE

The Monray tile has a nominal overall size of 16½" by 13" with an interlocking sidelap of 1¼". At the recommended 3" minimum headlap, 90 Monray field tiles will cover 100 square feet of roof area. Due to the adjustable headlap feature, equal course spacing of Monray tiles can be easily obtained, eliminating horizontal cutting.

WEIGHT IN PLACE

Monray tiles weigh approximately 10 lbs. each. The installed weight per 100 square feet including trim tiles is approximately 950 lbs.

Monray's extremely dense base and virtually impenetrable color glaze eliminate structural problems created by the addition to installed weight caused by the moisture absorbing characteristics of certain other roofing materials.

WEATHER CHECKS

The unique scientifically designed baffles or "weather checks" on the underside of Monray tiles give proven protection against wind-driven moisture. This protection is far superior to that offered by ordinary tiles.

FIRE TEST

Monray tiles are completely incombustible. In order to test the protection afforded to wood substrate and structural members from burning embers, laboratory tests have been conducted using various methods including A.S.T.M. E108 and Uniform Building Code Standard No. 32-7. A 12"x12" (Class A) burning brand placed on the surface of a typical Monray roof assembly, completely expired without charring or scorching the wooden decking immediately below.

FREEZE-THAW TEST

The severe freezing and thawing test in accordance with the A.S.T.M. C67-72 Method B, when performed on Monray specimen tiles, proved that after 50 cycles there was no evidence of fracture or disintegration of any type.

Due to the exclusive Monier extrusion and surfacing process, Monray tiles can be used in the coldest climates.

PERMEABILITY TEST

Each lot of Monray tile is tested for permeability by submitting a representative sample to a static 2" head of water for 24 hours. No water passes through acceptable tiles.

COMPRESSIVE STRENGTH

Is in excess of 4,000 p.s.i. at 28 days.

FLEXURE STRENGTH

Independent laboratory tests as well as tests conducted daily at Monier manufacturing centers ensure consistent strength. In these tests, the average Monray tile, with a concentrated load applied at midpoint, in a normally installed position, is capable of supporting more than 400 lbs.

COLOR AND STYLE AVAILABILITY

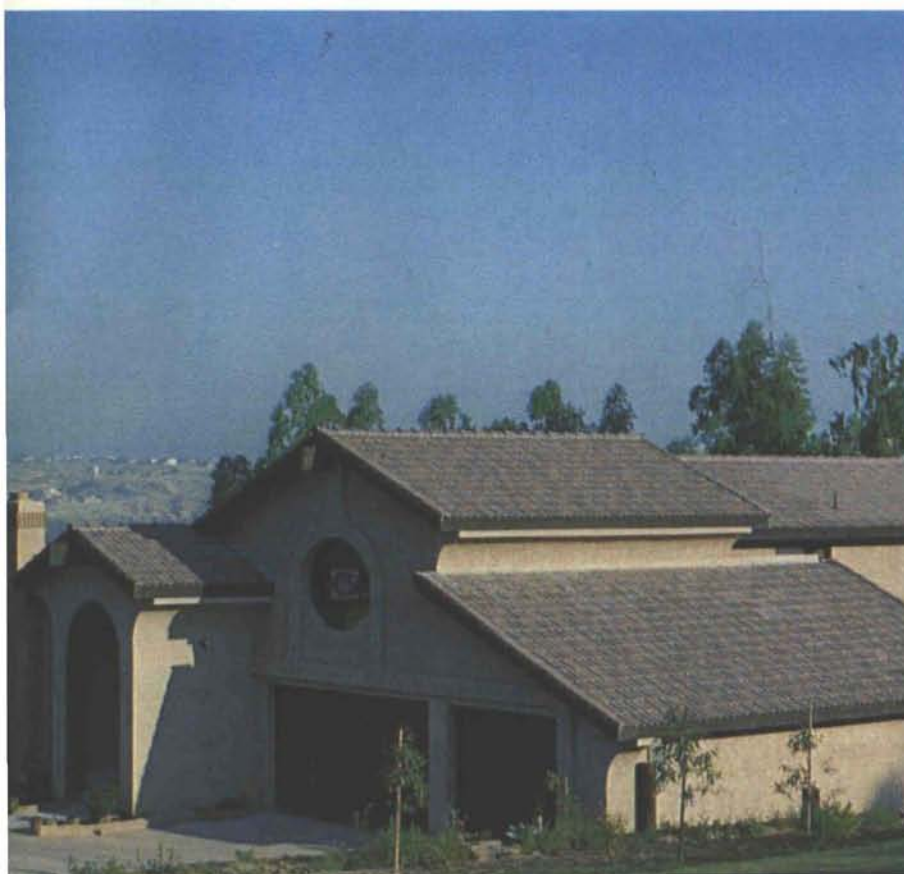
Monray tile colors and styles are selected to meet regional preferences. Information concerning colors and styles available in specific areas can be obtained from the nearest Monier sales office. Printed colors shown may vary from actual tile colors.



Mansard Corner Detail



Gable and Ridge Detail





SALES OFFICES

PHOENIX, ARIZONA
Phone: 602/269-2288

P.O. Box 14307
AZ 85063

CORONA, CALIFORNIA
Phone: 714/737-3888

1745 Sampson Avenue
CA 91720

STOCKTON, CALIFORNIA
Phone: 209/982-1473

P.O. Box 6037
CA 95206

LAKELAND, FLORIDA
Phone: 813/665-3316

P.O. Box 1763
FL 33802

HONOLULU, HAWAII
Phone: 808/524-8850

222 Koula Street
HI 96813

PORTLAND, OREGON
Phone: 503/472-5923

Write to Stockton,
Calif. plant

DUNCANVILLE, TEXAS
Phone: (Dallas) 214/299-5233

P.O. Box 620
TX 75116

HOUSTON, TEXAS
Phone: 713/692-5945

122 Berry Road
TX 77022

PLANTS

Phoenix, Arizona; Camarillo, Corona, Gilroy, San Marcos,
Stockton, California; Lakeland, Florida; Ewa Beach,
Hawaii; Duncanville, Texas.

GENERAL OFFICES

MONIER COMPANY

P.O. Box 5567, 1091 N. Batavia Orange, California
Phone: 714/538-8822 92666

For more information, call the Sweet's Buylne.

Printed in U.S.A.



LOU BORLAND

2433 Glenwood NE

Atlanta, Georgia 30324

404-344-2000



BUILDERS BLOCK

Members:
New Mexico Concrete
Masonry Association
National Concrete
Masonry Association

***Quality Concrete Masonry Products
and many allied building materials.
Serving New Mexico and West Texas
for over a quarter of a century.***

P.O. Box 1633
Roswell, NM 88201
505/622-1321

P.O. Drawer FF
Las Cruces, NM 88001
505/524-3633

Telephone
El Paso
915/532-9695



SLIDING GLASS DOORS

FOLDING DOORS

WOOD WINDOWS

CLAD WINDOWS

**Pella Products Company
of New Mexico**

RESIDENTIAL, INSTITUTIONAL, COMMERCIAL

P.O. Box 3311
Albuquerque, New Mexico 87190
Phone (505)345-3501

QUALITY... ...SERVICE

Call us for building products made by people you know. We distribute steel doors and frames made by **CUMMIES**, finish hardware made by **STANLEY**, **SARGENT**, and other quality manufacturers- and we give **SERVICE**.

Grant's

STEEL SASH, DOOR & HARDWARE, INC.
2529 & 2530 FIRST ST. NW - 505/247-8460
ALBUQUERQUE, N.M. 87102

LOOK TO THE FUTURE



HYDRO CONDUIT CORPORATION
247-3725

**Micro photo of Glassfibre Reinforced Cement -
The Newest Technology in Concrete**