

**Your local, independent
source of supply for all
forming and concrete accessory items.**

CONCRETE SYSTEMS, INC.



3120 Richmond Drive, N.E.
P. O. Box 3625
Albuquerque, N.M. 87110
Telephone (505) 345-6541

Congoleum® FLOR-EVER®

COMMERCIAL VINYL FLOORING



TRAVERTINE

Travertine is commercial flooring at its best...designed like no other floor to meet the changing commercial needs and demands, including virtually seamless installations in most applications. Here is a beautiful and delicate reproduction of a natural material...reproduced as never before. Travertine has a subdued background and a seamless tile effect that sets it apart from traditional commercial flooring. Available in 9' and 12' widths and 12 color choices.



**125 DALE, S.E.
P.O. BOX 25111, ALBUQUERQUE, NM 87125
PHONE 877-5340**

new mexico architecture **nma**

**Published bi-monthly by New Mexico Society of Architects,
American Institute of Architects, a non-profit organization.**

Editorial Correspondence should be addressed to John P. Conron, Box 935, Santa Fe, N.M. 87501. 505 983-6948.

Editorial Policy: Opinions expressed in all signed articles are those of the author and do not necessarily represent the official position of the publishing organization.

No responsibility will be assumed by the editor or publishing organization for unsolicited contributions. Return postage should accompany all unsolicited manuscripts.

Subscriptions: Write Circulation, New Mexico Architecture, 401-C Val Verde, S.E., Albuquerque, N.M. 87108. Single copy \$1.00. Yearly subscription \$5.00.

Change of address: Notifications should be sent to New Mexico Architecture, 401-C Val Verde, S.E., Albuquerque, N.M. 87108 at least 45 days prior to effective date. Please send both old and new addresses.

Advertising: Send requests for rates and information to New Mexico Architecture, Flora & Company, P. O. Box 8263, Albuquerque, N.M. 87198 (505) 266-3637.

*Additional copies of NMA available from John P. Conron
FAIA/FASID, P. O. Box 935, Santa Fe, N.M. 87501.*

Printed By

Hall-Poorbaugh Press, Inc., Roswell, N. M.

**INDEX OF FIRMS who make possible the
publication of NMA and the page upon
which their message may be found:**

Adds Corporation	19
Albuquerque Testing Laboratory	19
American Business Interiors	4
Artesanos Imports Co.	4
Builders Block	15
Concrete Systems	18
Crego Block Co.	2
Featherlite Block Co.	6
Hanley Paint Mfg. Co., Inc.	6
Hydro Conduit Corporation	20
Mason Contractors Assn. of NM	8
McGill Trus-Joist	6
Public Service Company of NM	4
San Valle Tile Kilns	7
Stanley Structures	5
Stryco Sales, Inc.	18
Sunenco	19



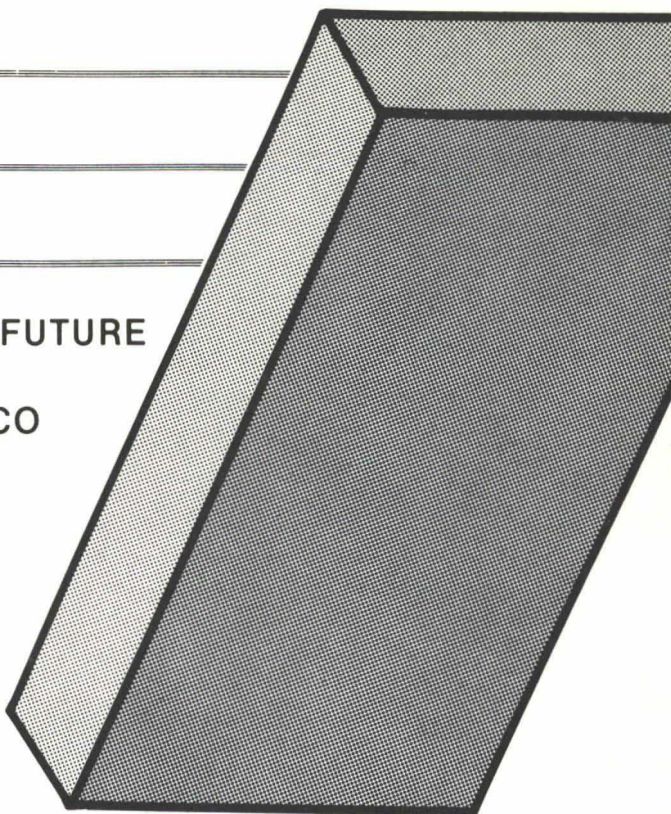
LOOK TO THE FUTURE

LOOK TO SUNENCO

MAXIMUM USE OF THE SUN
THROUGH
MAXIMUM USE OF TECHNOLOGY

For Details Write

SUNENCO
P.O. BOX 485
LAS CRUCES, NEW MEXICO 88001



PHONE (505) 524-4554

ADDS SCREENPRINTERS architectural display.



1/4" SCREEN PRINTED INTERIOR PLEXIGLAS
DISPLAYS FOR THE INTERNATIONAL SPACE
HALL OF FAME IN ALAMOGORDO, NEW MEXICO

IF YOUR INTERIOR DESIGNS CALL FOR
INNOVATIVE PLEXIGLAS DISPLAYS, CALL US

ADDS CORPORATION

3325 PRINCETON N.E. • ALBUQUERQUE, N.M. • 345-3642

ALBUQUERQUE TESTING LABORATORY.... TO BE SURE!



SUBSOIL INVESTIGATIONS
PHYSICAL TESTING
INSPECTION
RESEARCH
WELDING CERTIFICATION
NUCLEAR DENSITY
LABORATORY ANALYSIS AND
EVALUATION OF CONSTRUCTION
MATERIALS

ALL WORK DONE UNDER SUPERVISION OF REGISTERED
PROFESSIONAL ENGINEERS



532 JEFFERSON, N. E.
ALBUQUERQUE, NM
P. O. BOX 4101

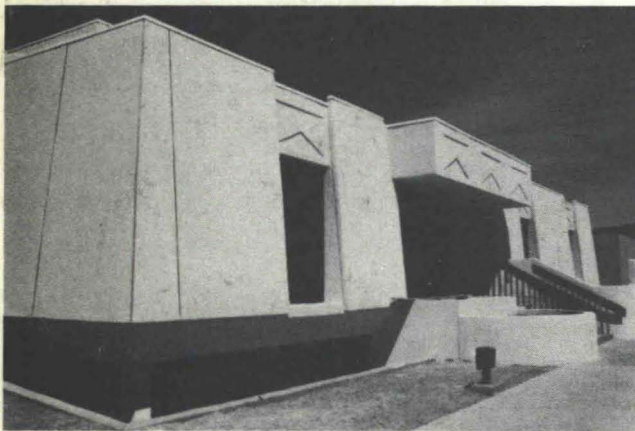
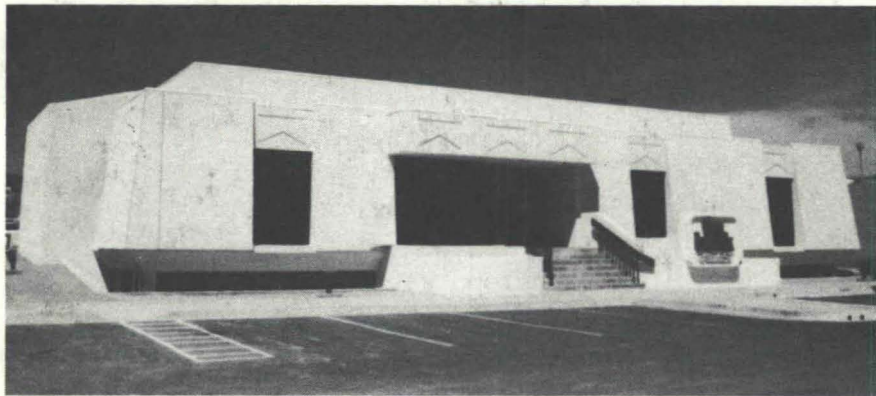
PHONE 255-8916 or 255-1322

Linnean Library, UNM
Serials Department
ALBUQUERQUE, NEW MEXICO

Bulk Rate
U. S. Postage
PAID
Roswell, N. M.
Permit No. 47

Vol. 20, No. 3

BRANCH BANK FOR THE BANK OF SANTA FE SANTA FE, NEW MEXICO



ARCHITECT: W. C. Kruger & Assoc.
STRUCTURAL ENGINEER: Robert Krause Eng. Co.
CONTRACTOR: A-1 Builders & Supply Co.,
Santa Fe, New Mexico



HYDRO CONDUIT CORPORATION

2800 SECOND STREET, SW

ALBUQUERQUE, NEW MEXICO 87103

PHONE 247-3726