



YOUR LOCAL AIA FORM SERVICE

offers to all AIA members and componets a 50% discount on all "B" series and a 20% discount on all other forms and documents.

Please use the April 15, 1977 price list for new prices.

This is a service of the New Mexico Society of Architects, and we appreciate your support.

Office hours from 9 to 12,
Monday through Friday
AIA FORM SERVICE

915 LEAD, S.W.
Box 7415

(505) 242-4159
ALBUQUERQUE, NM 87104



new mexico architecture

nma

Published bi-monthly by New Mexico Society of Architects, American Institute of Architects, a non-profit organization.

Editorial Correspondence should be addressed to John P. Conron, Box 935, Santa Fe, N. M. 87501. 505 983-6948.

Editorial Policy: Opinions expressed in all signed articles are those of the author and do not necessarily represent the official position of the publishing organization.

No responsibility will be assumed by the editor or publishing organization for unsolicited contributions. Return postage should accompany all unsolicited manuscripts.

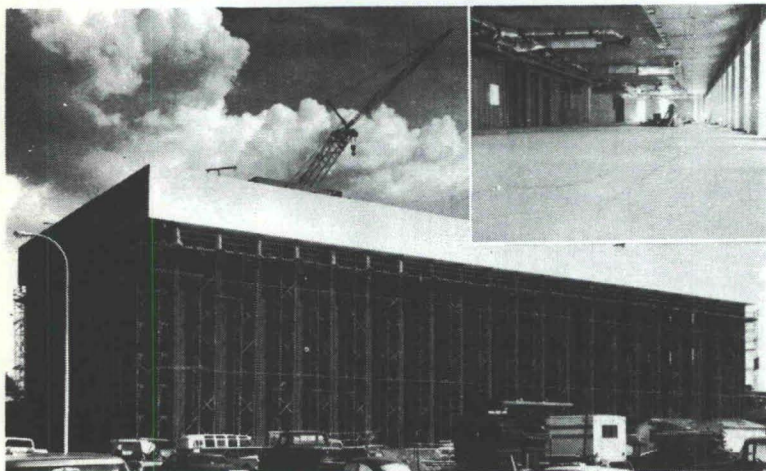
Subscriptions: Write Circulation, New Mexico Architecture, Box 7415, Albuquerque, N. M. 87104. Single copy \$1.00. Yearly subscription \$5.00.

Change of address: Notifications should be sent to New Mexico Architecture, Box 7415, Albuquerque, N. M. 87104 at least 45 days prior to effective date. Please send both old and new addresses.

Advertising: Send requests for rates and information to New Mexico Architecture, Prince Advertising Agency, P. O. Box 11309, Albuquerque, NM 87112.

Additional copies of NMA available from John P. Conron FAIA/FASID, P. O. Box 935, Santa Fe, N.M. 87501.

Structural integrity: The concrete facts of southwestern life.



Employment Security Commission Office Building in Albuquerque
Architect: W. C. Kruger and Associates
Structural Engineer: Robert Krause
ChemComp Concrete supplied by Albuquerque Gravel Products Company

The assignment was to place concrete floors on metal decks in the new Employment Security Commission Office Building in Albuquerque. ChemComp® was specified to reduce or eliminate cracking typical of this type of placement. The architects and engineers were well satisfied with the results (see inset). Check ChemComp's many advantages by writing for our free brochure: Box 392, El Paso, Texas 79943.



SOUTHWESTERN PORTLAND CEMENT COMPANY
MAKERS OF EL TORO CEMENTS / EL PASO, AMARILLO, ODESSA

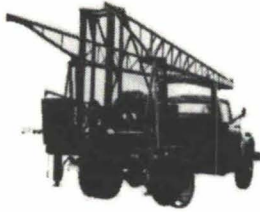
Printed By

Hall-Poorbaugh Press, Inc., Roswell, N. M.

INDEX OF FIRMS who make possible the publication of NMA and the page upon which their message may be found:

AIA Form Service	26
Albuquerque Testing Laboratory	27
Aluminum Sales Corp.	7
American Interiors	4
Builders Block & Stone Co., Inc.	4
Crego Block Co., Inc.	2
Customcraft Fixtures	12
El Rey Stucco Co., Inc.	27
Grant's Steel Sash, Door & Hardware, Inc.	6
Hanley Paint Mfg. Co., Inc.	12
Hydro Conduit Corporation	28
McGill Trus Joist	7
Masonry Contractors Assn. of N.M.	8
Overhead Door Co.	6
San Vallé Tile Kilns	10
Southwestern Portland Cement Co.	26
Spectra-Glaze	4
Stanley Structures	5
Stryco Sales, Inc.	6
Summit Brick	27

ALBUQUERQUE TESTING LABORATORY.... TO BE SURE!



SUBSOIL INVESTIGATIONS
PHYSICAL TESTING
INSPECTION
RESEARCH
WELDING CERTIFICATION
NUCLEAR DENSITY
LABORATORY ANALYSIS AND
EVALUATION OF CONSTRUCTION
MATERIALS

ALL WORK DONE UNDER SUPERVISION OF REGISTERED
PROFESSIONAL ENGINEERS

532 JEFFERSON, N. E.
ALBUQUERQUE, NM
P. O. BOX 4101

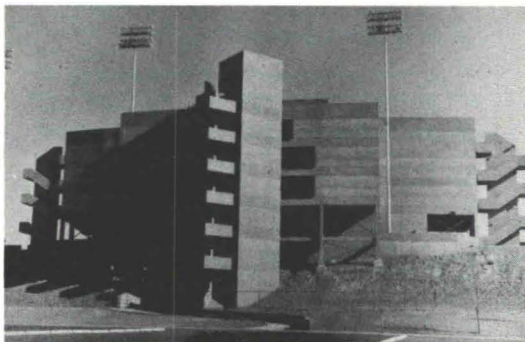
PHONE 255-8916 or 255-1322



PROVEN CEMENTITIOUS COATINGS

- MODIFIED COATINGS
- CONVENTIONAL STUCCO
- MASONRY PAINTS

MANUFACTURED IN ALBUQUERQUE, N.M.



SUPER-FLEX I, an acrylic base modified cementitious coating that may be trowel applied and textured as with stucco.

SUPER-FLEX II, a superior thin coat finish developed as a spray material for a flexible finish for masonry, metal, and other non-porous surfaces. Ideal for coating asbestos board, foam board, woodrock and as a bed coat for marble crete.

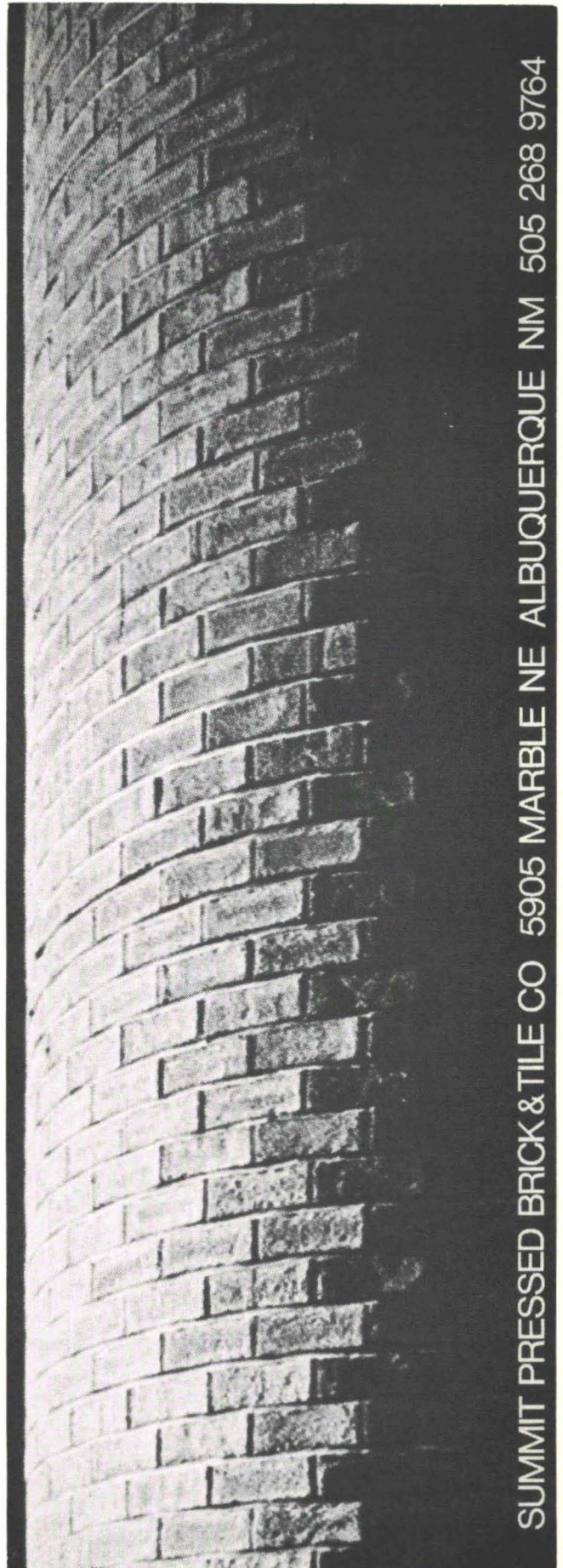
BRAVO MASONRY PAINT, a waterproof filler and color coat for concrete block, slump block, precast concrete or any masonry cement substrate. Just add water - six standard plus custom colors.

FOR BROCHURES AND INFORMATION - CALL OR WRITE



4100½ BROADWAY, S. E.
ALBUQUERQUE, N. M. 87102
(505) 873-1180

STUCCO CO., INC.



SUMMIT PRESSED BRICK & TILE CO 5905 MARBLE NE ALBUQUERQUE NM 505 268 9764

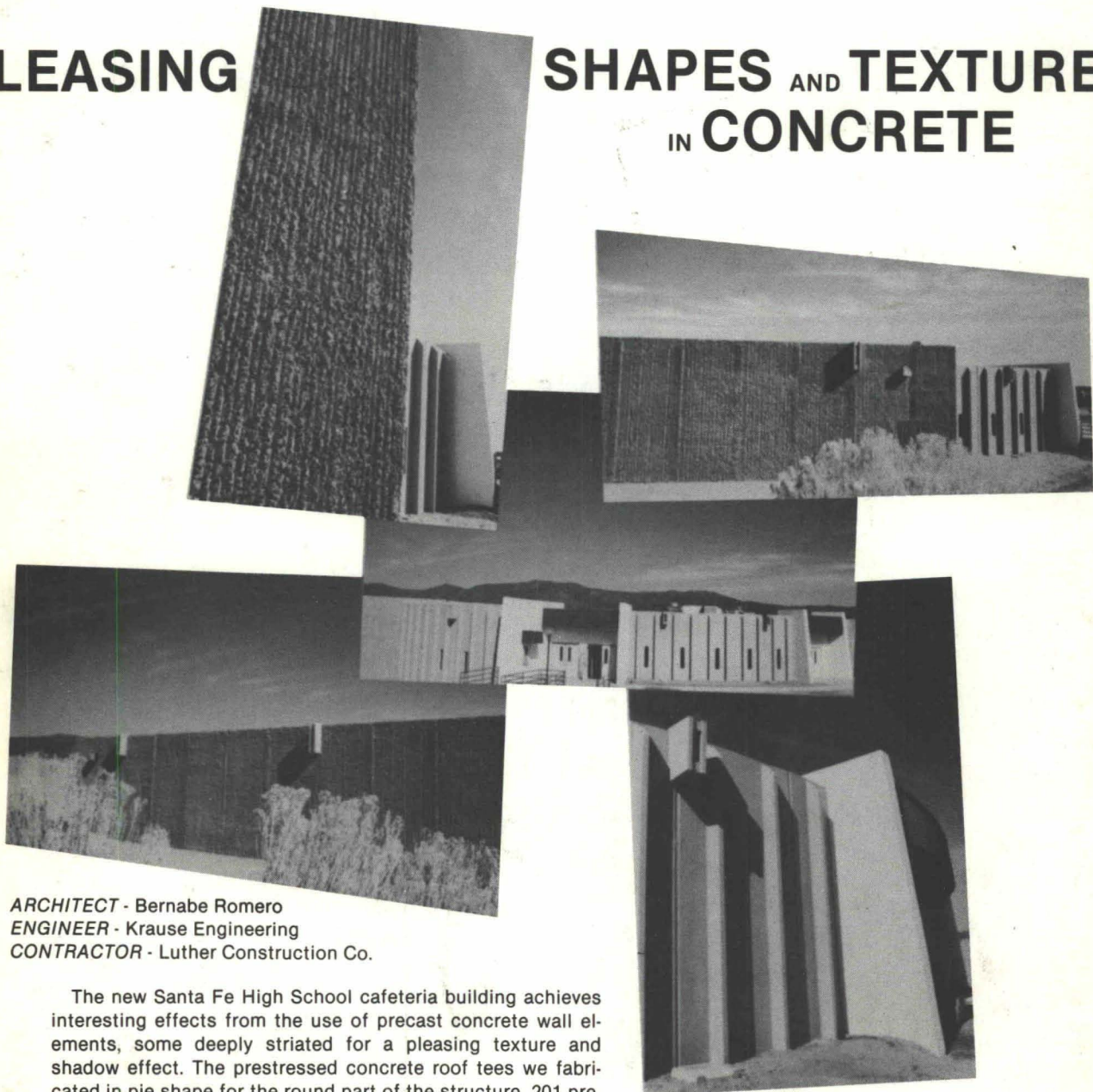
Library
University of New Mexico
Albuquerque, N. M. 87106

Bulk Rate
U. S. Postage
PAID
Roswell, N. M.
Permit No. 47

Vol. 19, No. 3

PLEASING

**SHAPES AND TEXTURES
IN CONCRETE**



ARCHITECT - Bernabe Romero
ENGINEER - Krause Engineering
CONTRACTOR - Luther Construction Co.

The new Santa Fe High School cafeteria building achieves interesting effects from the use of precast concrete wall elements, some deeply striated for a pleasing texture and shadow effect. The prestressed concrete roof tees we fabricated in pie shape for the round part of the structure. 201 precast prestressed sections were fabricated for the project by Hydro Conduit Corporation.



HYDRO CONDUIT CORPORATION

2800 SECOND STREET, SW — ALBUQUERQUE, NEW MEXICO 87103