

Start the New Year correctly
... give a provocative magazine — NMA.
And it's a gift which arrives six times during the year.



a gift subscription to
New Mexico Architecture
is only \$5.00 per year



Send all information
—and a check—to:

New Mexico Architecture
Box 7415, Albuquerque,
New Mexico 87104



new mexico architecture

nma

Published bi-monthly by New Mexico Society of Architects,
American Institute of Architects, a non-profit organization.

Editorial Correspondence should be addressed to John P.
Conron, Box 935, Santa Fe, N. M. 87501. 505 983-6948.

Editorial Policy: Opinions expressed in all signed articles
are those of the author and do not necessarily represent
the official position of the publishing organization.

No responsibility will be assumed by the editor or pub-
lishing organization for unsolicited contributions. Return
postage should accompany all unsolicited manuscripts.

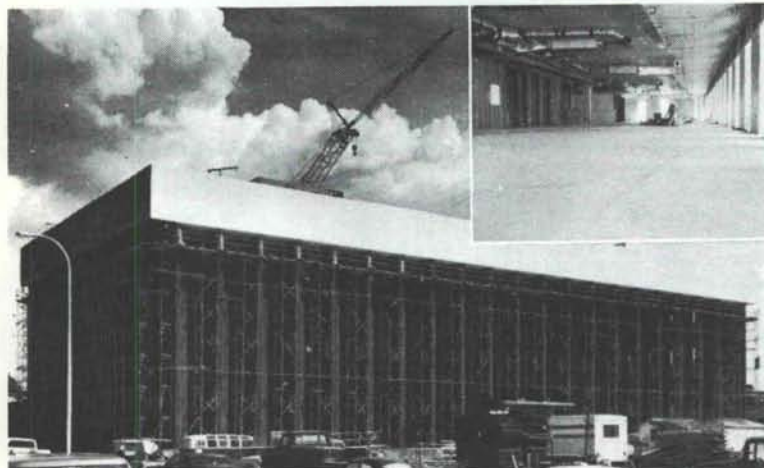
Subscriptions: Write Circulation, New Mexico Architec-
ture, Box 7415, Albuquerque, N. M. 87104. Single copy
\$1.00. Yearly subscription \$5.00.

Change of address: Notifications should be sent to New
Mexico Architecture, Box 7415, Albuquerque, N. M. 87104
at least 45 days prior to effective date. Please send both
old and new addresses.

Advertising: Send requests for rates and information to
New Mexico Architecture, Prince Advertising Agency,
P. O. Box 11309, Albuquerque, NM 87112.

*Additional copies of NMA available from John P. Conron
FAIA/FASID, P. O. Box 935, Santa Fe, N. M. 87501.*

Structural integrity: The concrete facts of southwestern life.



Employment Security Commission Office Building in Albuquerque
Architect: W. C. Kruger and Associates
Structural Engineer: Robert Krause
ChemComp Concrete supplied by Albuquerque Gravel Products Company

The assignment was to place concrete floors on metal decks in the
new Employment Security Commission Office Building in
Albuquerque. ChemComp® was specified to reduce or eliminate
cracking typical of this type of placement. The architects and
engineers were well satisfied with the results (see inset). Check
ChemComp's many advantages by writing for our free brochure:
Box 392, El Paso, Texas 79943.



SOUTHWESTERN PORTLAND CEMENT COMPANY
MAKERS OF EL TORO CEMENTS / EL PASO, AMARILLO, ODESSA

Printed By

Hall-Poorbaugh Press, Inc., Roswell, N. M.

INDEX OF FIRMS who make possible the
publication of NMA and the page upon
which their message may be found:

AIA Form Service	15
Albuquerque Specialty Products, Inc.	4
Albuquerque Testing Laboratory	16
Aluminum Sales Corp.	6
American Interiors	15
Builders Block & Stone Co., Inc.	19
Crego Block Co., Inc.	2
Customcraft Fixtures	4
El Rey Stucco Co., Inc.	17
Grant's Steel Sash, Door & Hdwe., Inc.	19
Hanley Paint Mfg. Co., Inc.	16
Hydro Conduit Corporation	20
Mason Contractors Assn. of N.M.	8
McGill Trus Joist	6
New Mexico Office Furniture	17
Overhead Door Co.	16
Southwestern Portland Cement Co.	18
Spectra-Glaze	16
Stanley Structures	5
Stryco Sales, Inc.	17
Summit Brick	4
Wellborn Paint Mfg. Co.	19



BUILDERS BLOCK

Members:
New Mexico Concrete
Masonry Association
National Concrete
Masonry Association



**Quality Concrete Masonry Products
and many allied building materials.
Serving New Mexico and West Texas
for over a quarter of a century.**

P.O. Box 1633
Roswell, NM 88201
505/622-1321

P.O. Drawer FF
Las Cruces, NM 88001
505/524-3633

Telephone
El Paso
915/532-9695

QUALITY SERVICE

Call us for building products made by people you know. We distribute: steel doors & frames made by Republic Steel; finish hardware made by  SARGENT,  STANLEY and other quality manufacturers - and we give **SERVICE**.

Grant's

STEEL SASH, DOOR & HARDWARE, INC.
2529 & 2530 FIRST ST. NW
ALBUQUERQUE, N.M. 87102

FLEX SHIELD

waterproof flexible texture coating

Heavy texture coating for all types of
exterior/interior masonry surfaces.
DURABLE • FLEXIBLE • WATERPROOF

**3 RECENT FLEX-SHIELD
applications in Albuquerque**

TWO PARK PLAZA HIGH RISE
OFFICE BUILDING

ALBUQUERQUE INN

NATIONAL BUILDING

Wellborn PAINT

Mfg. Company, Albuquerque, N.M. 877-5050

Library
University of New Mexico
Albuquerque, N. M. 87106

Bulk Rate
U. S. Postage
PAID
Roswell, N. M.
Permit No. 47

Vol. 19, No. 1



COMPLEMENTARY

One of the many attributes of precast concrete is the way it can complement other building materials in a structure. The Felician Sisters Convent at Albuquerque, in Rio Rancho, features precast concrete panels and beams at the entry with sandblasted exposed white aggregate texture to beautifully complement the structure's other materials and texture.

The panels were both structural and architectural in function.

ARCHITECT - Flatow-Moore-Bryan & Associates, A.I.A.
CONTRACTOR - Lembke Construction Co., Inc.



HYDRO CONDUIT CORPORATION

2800 SECOND STREET, SW — ALBUQUERQUE, NEW MEXICO 87103