



SUPPORT YOUR LOCAL AIA FORM SERVICE

We give a 20% discount to all AIA members and components on orders over \$10.00—

Office hours from 9 to 12,
Monday through Friday

The new AIA Catalog is now out—please destroy ALL old catalogs, price lists, etc.

Don't forget the Tax is now 4 1/4 %

This is a service of the New Mexico Society of Architects.

AIA FORM SERVICE BOX 7415
915 LEAD, S.W. ALBUQUERQUE, NM 87104
(505) 242-4159



new mexico architecture

nma

Published bi-monthly by New Mexico Society of Architects, American Institute of Architects, a non-profit organization.

Editorial Correspondence should be addressed to John P. Conron, Box 935, Santa Fe, N. M. 87501. 505 983-6948.

Editorial Policy: Opinions expressed in all signed articles are those of the author and do not necessarily represent the official position of the publishing organization.

No responsibility will be assumed by the editor or publishing organization for unsolicited contributions. Return postage should accompany all unsolicited manuscripts.

Subscriptions: Write Circulation, New Mexico Architecture, Box 7415, Albuquerque, N. M. 87104. Single copy \$1.00. Yearly subscription \$5.00.

Change of address: Notifications should be sent to New Mexico Architecture, Box 7415, Albuquerque, N. M. 87104 at least 45 days prior to effective date. Please send both old and new addresses.

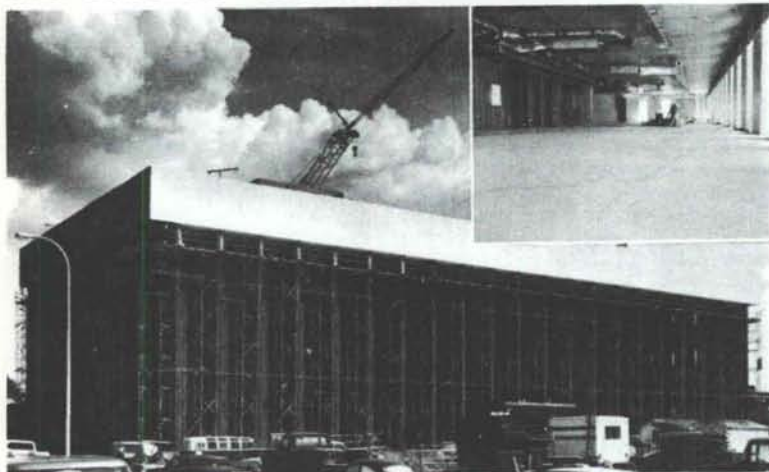
Advertising: Send requests for rates and information to New Mexico Architecture, Robert G. Mallory, 115 Amherst Drive S.E., Albuquerque, N. M. 87106. 505 255-8668.

Additional copies of NMA available from John P. Conron FAIA/FASID, P. O. Box 935, Santa Fe, N. M. 87501.

Printed By

Hall-Poorbaugh Press, Inc., Roswell, N. M.

Structural integrity: The concrete facts of southwestern life.



Employment Security Commission Office Building in Albuquerque
Architect: W. C. Kruger and Associates
Structural Engineer: Robert Krause
ChemComp Concrete supplied by Albuquerque Gravel Products Company

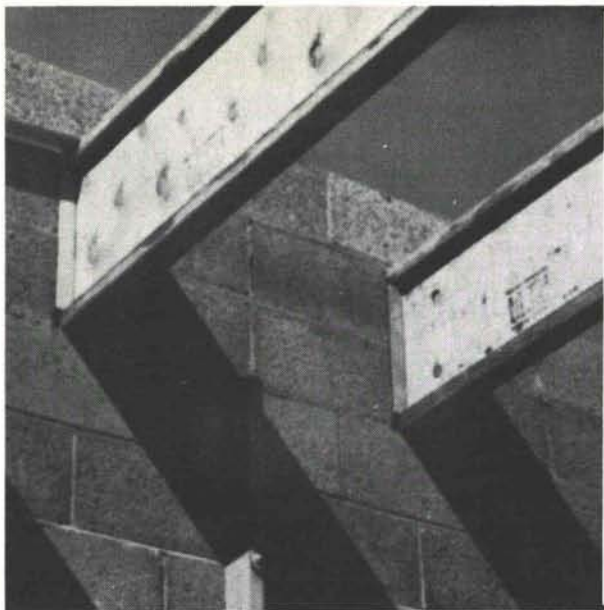
The assignment was to place concrete floors on metal decks in the new Employment Security Commission Office Building in Albuquerque. ChemComp® was specified to reduce or eliminate cracking typical of this type of placement. The architects and engineers were well satisfied with the results (see inset). Check ChemComp's many advantages by writing for our free brochure: Box 392, El Paso, Texas 79943.



SOUTHWESTERN PORTLAND CEMENT COMPANY
MAKERS OF EL TORO CEMENTS / EL PASO, AMARILLO, ODESSA

INDEX OF FIRMS who make possible the publication of NMA and the page upon which their message may be found:

AIA Form Service	58
Albuquerque Testing Laboratory	56
Builders Block & Stone Co., Inc.	7
Century Roofing Tile, Inc.	7
Contech, Inc.	5
Crego Block Co., Inc.	2
Doric Credit Union	57
Douglass, William W., Inc.	56
Hanley Paint Mfg. Co., Inc.	9
Hydro Conduit Corporation	60
Mason Contractors Assn. of N.M.	10
Mechanical Contractors Assn. of N.M., Inc.	6
McGill Trus Joist	59
McGill Co., Inc., Geo. B.	56
New Mexico Office Furniture	59
Prestressed Concrete Products, Inc.	6
Southwest Insul-Bead, Inc.	8
Southwestern Portland Cement Co.	58
Southwest Vermiculite Co.	4
Specialties Suppliers	8
Spectra-Glaze	57
Stryco Sales, Inc.	56
Summit Pressed Brick & Tile Co.	8
Unistrut New Mexico	9
University Bookstore	9
Wellborn Paint Mfg. Co.	59



"We found TJI far superior to other systems"

states Marvin E. Goldberg, El Paso general contractor: "In a warehouse-office building which we recently completed, we found the Trus Joist roof system to be far more economical than any of some half dozen systems that we investigated."

We found the erection and completion of the building with this system to be far superior to any other system we had considered using on this project."

Project: Office and Warehouse, El Paso, Texas

Contractor: Marvin E. Goldberg

George B. McGill & Co., Inc.

3530-C Pan American Fwy., NE

Albuquerque, New Mexico 87107

Telephone (505) 345-4501



**Your
business
has to
change with
the times,
so why
have walls
that won't?**

*New
Mexico
Office
Furniture*



**Steelcase
Movable
Walls**

A wall that's only a wall is an obstacle. But a Steelcase Movable Wall System can form an office today or a conference room tomorrow or two or three work-stations the day after. In other words, it gives you unlimited flexibility in planning your office interiors. And that's a boon to any business.

6437 LINN AVE. N.E. • ALBUQUERQUE, NEW MEXICO • (505) 265-7841

**FLEX
SHIELD**

waterproof flexible texture coating

Heavy texture coating for all types of
exterior/interior masonry surfaces.
DURABLE • FLEXIBLE • WATERPROOF

3 RECENT FLEX-SHIELD

applications in Albuquerque

**TWO PARK PLAZA HIGH RISE
OFFICE BUILDING**

ALBUQUERQUE INN

NATIONAL BUILDING

Wellborn PAINT

Mfg. Company, Albuquerque, N.M. 877-5050

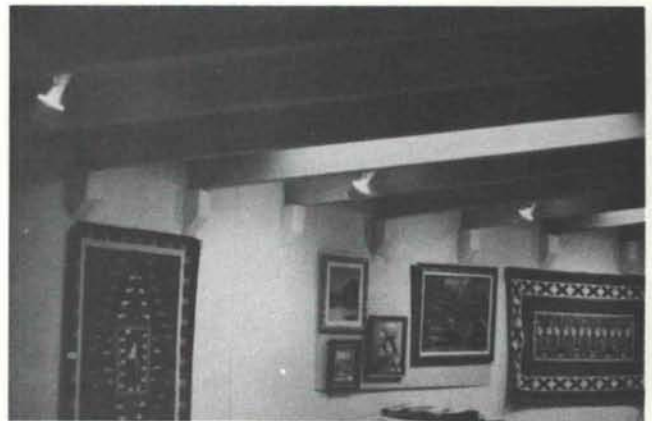
Bulk Rate
U. S. Postage
PAID
Roswell, N. M.
Permit No. 47

Vol. 18. Nos. 3 & 4



ARCHITECT - Earl Mayne
ENGINEER - W. R. Underwood, Jr.
CONTRACTOR - Dale Bellamah Corporation
OWNER-DEVELOPER - Bill Adams

CONCRETE CAN BE BEAUTIFUL!



The new Bien Mur Indian Market Center north of Albuquerque is a fine example of the pleasing use of prestressed and precast concrete to form an entire building. The walls were formed of prestressed insulated 10" deep double tee wall panels with a 5" stem and 5" flange. The roof contains 12" deep prestressed tees tapering from 4' to 10". The interior features a mezzanine floor formed by 10" deep prestressed tees. Precast concrete components consisted of 14" square columns, a curved ledger beam and a flat roof slab 18'-6" in diameter.

The result is an attractive, functional structure that will retain its beauty and value indefinitely.



HYDRO CONDUIT CORPORATION

2800 SECOND STREET, SW - ALBUQUERQUE, NEW MEXICO 87103