



## SUPPORT YOUR LOCAL AIA FORM SERVICE

We give a 20% discount to all AIA members and components on orders over \$10.00

Office hours from 9 to 12,  
Monday through Friday

We now have in stock the 1976 Edition of Form A201.

This is a service of the New Mexico Society of Architects.

### AIA FORM SERVICE

915 LEAD, S.W.  
Box 7415

(505) 242-4159  
ALBUQUERQUE, NM 87104



## new mexico architecture

nma

Published bi-monthly by New Mexico Society of Architects, American Institute of Architects, a non-profit organization.

Editorial Correspondence should be addressed to John P. Conron, Box 935, Santa Fe, N. M. 87501. 505 983-6948.

**Editorial Policy:** Opinions expressed in all signed articles are those of the author and do not necessarily represent the official position of the publishing organization.

No responsibility will be assumed by the editor or publishing organization for unsolicited contributions. Return postage should accompany all unsolicited manuscripts.

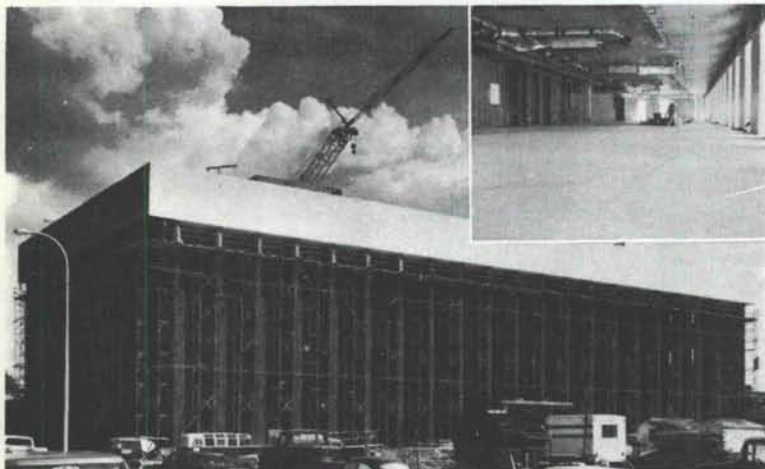
**Subscriptions:** Write Circulation, New Mexico Architecture, Box 7415, Albuquerque, N. M. 87104. Single copy \$1.00. Yearly subscription \$5.00.

**Change of address:** Notifications should be sent to New Mexico Architecture, Box 7415, Albuquerque, N. M. 87104 at least 45 days prior to effective date. Please send both old and new addresses.

**Advertising:** Send requests for rates and information to New Mexico Architecture, Prince Advertising Agency, P. O. Box 11309, Albuquerque, NM 87112.

Additional copies of NMA available from John P. Conron FAIA/FASID, P. O. Box 935, Santa Fe, N.M. 87501.

## Structural integrity: The concrete facts of southwestern life.



Employment Security Commission Office Building in Albuquerque  
Architect: W. C. Kruger and Associates  
Structural Engineer: Robert Krause  
ChemComp Concrete supplied by Albuquerque Gravel Products Company

The assignment was to place concrete floors on metal decks in the new Employment Security Commission Office Building in Albuquerque. ChemComp® was specified to reduce or eliminate cracking typical of this type of placement. The architects and engineers were well satisfied with the results (see inset). Check ChemComp's many advantages by writing for our free brochure: Box 392, El Paso, Texas 79943.



**SOUTHWESTERN PORTLAND CEMENT COMPANY**  
MAKERS OF EL TORO CEMENTS / EL PASO, AMARILLO, ODESSA

Printed By

Hall-Poorbaugh Press, Inc., Roswell, N. M.

**INDEX OF FIRMS** who make possible the publication of NMA and the page upon which their message may be found:

AIA Form Service .....	22
Albuquerque Specialty Products, Inc. ....	23
Albuquerque Testing Laboratory .....	23
American Interiors .....	4
Builders Block & Stone Co., Inc. ....	8
Crego Block Co., Inc. ....	2
Hanley Paint Mfg. Co., Inc. ....	23
Hydro Conduit Corporation .....	24
Mason Contractors Assn. of N. M. ....	6
McGill Trus Joist .....	4
New Mexico Office Furniture .....	20
Southwestern Portland Cement Co. ....	22
Spectra-Glaze .....	4
Stanley Structures .....	5
Stryco Sales, Inc. ....	23
Summit Brick .....	8
Wellborn Paint Mfg. Co. ....	21



## ALBUQUERQUE TESTING LABORATORY.... TO BE SURE!



SUBSOIL INVESTIGATIONS  
PHYSICAL TESTING  
INSPECTION  
RESEARCH  
WELDING CERTIFICATION  
NUCLEAR DENSITY  
LABORATORY ANALYSIS AND  
EVALUATION OF CONSTRUCTION  
MATERIALS

ALL WORK DONE UNDER SUPERVISION OF REGISTERED  
PROFESSIONAL ENGINEERS

532 JEFFERSON, N. E.  
ALBUQUERQUE, NM  
P. O. BOX 4101

PHONE 255-8916 or 255-1322



## Congoleum® FINE FLOORS



## PEERLESS™

CUSHIONED VINYL FLOORS. THE ULTIMATE IN CUSTOM FLOORS FOR COMMERCIAL INSTALLATION. THE WHITE SHIELD BACK ALLOWS INSTALLATION ON OR BELOW GRADE.

ASK TO SEE THE WIDE SELECTION OF BEAUTIFUL PATTERNS IN PEERLESS CUSHIONED VINYL SHEET GOODS. EXTRA RUGGED, YET SO BEAUTIFUL.



125 DALE, S. E.  
P. O. BOX 2511, ALBUQUERQUE, NM 87125  
PHONE 877-5340

## The paints and coatings Southwestern professionals use.

Easy-on interior paints, climate-designed exterior paints, color coordinated wall-coverings, industrial-technical coatings, and a complete selection of professional supplies and accessories. Since 1936.

# Hanley Paint

Manufacturing Co.

Albuquerque, N.M.: 1214 San Pedro N.E.  
El Paso, Texas: 1531 Magoffin, 9054 Dyer,  
7636 Gateway East, 5937 N. Mesa

TODAY'S TOP PRIORITY. . . .

## energy saving!

# TWO

OF THE OLDEST  
AND MOST RESPECTED NAMES IN  
INSULATION HELP YOU REACH  
TODAY'S ENERGY SAVING GOALS.

# Permalite

PERLITE CONCRETE AGGREGATE AND  
MASONRY FILL INSULATION.

AND  
**Celotex**®  
BUILDING PRODUCTS

TECHNIFOAM®  
POLYURETHANE

Sheet insulation for frame, masonry or metal building application.

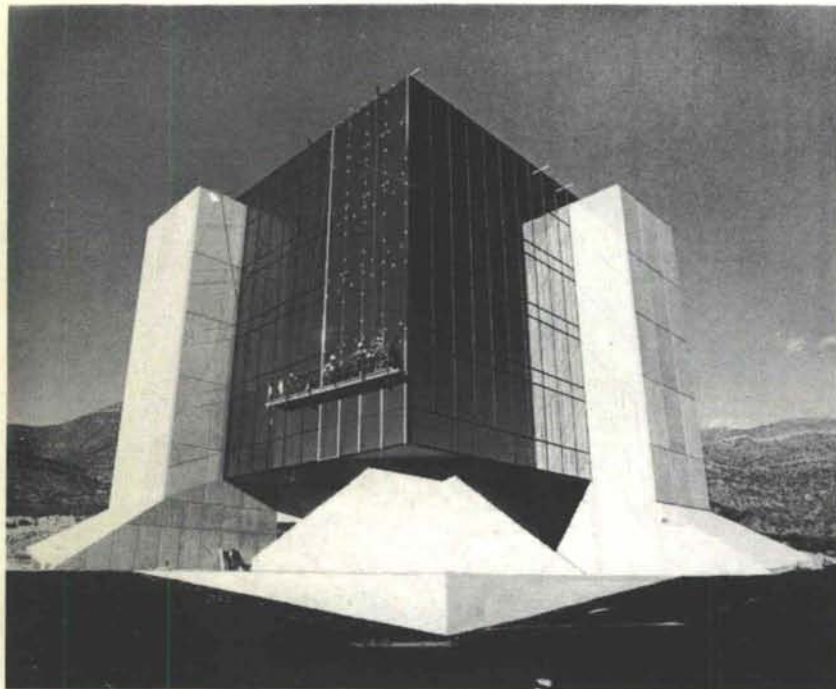
Ask us for performance details on these fine products.



ALBUQUERQUE SPECIALTY PRODUCTS, INC.  
4402 2nd St., NW, Albuquerque, NM 87125  
P. O. Box 25844 — (505) 345-8401

Bulk Rate  
U. S. Postage  
**PAID**  
Roswell, N. M.  
Permit No. 47

Vol. 18, No. 6



## THE INTERNATIONAL SPACE HALL OF FAME

A TRIBUTE TO MAN'S  
ACHIEVEMENTS IN  
SPACE...

**AND A TRIBUTE TO THE  
ENDURING SERVICEABILITY  
OF PRECAST CONCRETE.**

ARCHITECT—Charles E. Nolan, Jr., A.I.A.  
Alamogordo, N.M.

STRUCTURAL ENGINEER—John Fulgenzi, P.E.

CONTRACTOR—Frank Tatsch  
General Contractor,  
Silver City, N.M.

The Shrine building, the first structure of the International Space Hall of Fame at Alamogordo, N.M., features a maintenance free exterior of precast concrete panels in a brush blasted warm tone finish—produced by Hydro Conduit Corp. Speed of enclosure of the structure also dictated the use of precast concrete panels.

This first building in the complex now contains artifacts and exhibits and will in the future be a free exhibit building to the public.

In the future a planetarium, an auditorium and an exhibit building will be added.



**HYDRO CONDUIT CORPORATION**

2800 SECOND STREET, SW — ALBUQUERQUE, NEW MEXICO 87103