

# FLEX SHIELD

*waterproof flexible texture coating*

Heavy texture coating for all types of  
exterior/interior masonry surfaces.

DURABLE • FLEXIBLE • WATERPROOF

3 RECENT FLEX-SHIELD  
applications in Albuquerque

TWO PARK PLAZA HIGH RISE  
OFFICE BUILDING

ALBUQUERQUE INN

NATIONAL BUILDING

**Wellborn PAINT**

Mfg. Company, Albuquerque, N.M. 877-5050

## new mexico architecture nma

Published bi-monthly by New Mexico Society of Architects,  
American Institute of Architects, a non-profit organization.

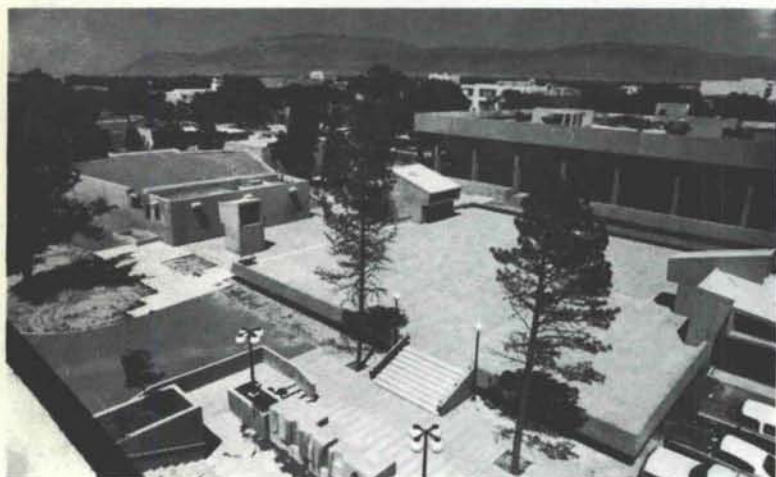
**Editorial Policy:** Opinions expressed in all signed articles  
are those of the author and do not necessarily represent  
the official position of the publishing organization.

Editorial Correspondence should be addressed to John P.  
Conron, Box 935, Santa Fe, N. M. 87501. 505 983-6948.

**Advertising:** Send requests for rates and information to  
New Mexico Architecture, Robert G. Mallory, 115 Amherst  
Drive S.E., Albuquerque, N. M. 87106. 505 255-8668.

Printed By  
Hall-Poorbaugh Press, Inc., Roswell, N.M.

Integrity and Beauty:  
The concrete facts of Southwestern life.



Physics Laboratories and Lecture Hall on the University of New Mexico Campus  
Architect: Pacheco and Graham  
Structural Engineer: Robert Krause  
ChemComp Concrete supplied by Springer Corp.

When you want minimized shrinkage cracking for absolute  
structural integrity, durability and beauty, the concrete answer is  
ChemComp, Southwestern Portland's expansive cement.  
Check ChemComp's many advantages by writing for our  
free brochure: Box 392, El Paso, Texas 79943.



**SOUTHWESTERN PORTLAND CEMENT COMPANY**  
MAKERS OF EL TORO CEMENTS / EL PASO, AMARILLO, ODESSA

INDEX OF FIRMS who make possible the  
publication of NMA and the page upon  
which their message may be found:

Albuquerque Testing Laboratory	6
Architectural Systems Co.	5
Artesanos Imports Co.	23
Builders Block & Stone Co., Inc.	22
Century Roof Tile, Inc.	4
Cook's Building Specialties	22
Crego Block Co., Inc.	2
Douglass, William W., Inc.	25
Goodrich Roofing Co.	7
Hanley Paint Mfg. Co., Inc.	23
Historical Society of New Mexico	25
Hydro Conduit Corporation	26
Mason Contractors	10
Mesa Blueprint	25
McGill Co., Inc., Geo. B.	22
McGill Trus Joist	20
New Mexico Office Furniture	25
Prestressed Concrete Products, Inc.	5
Santa Fe Builders Supply Co.	7
Southern Union Gas Co.	23
Southwestern Portland Cement Co.	24
Spectra-Glaze	23
Stryco Sales, Inc.	6
Summit Brick	4
Unistrut New Mexico	7
University Bookstore	6
Wellborn Paint Mfg. Co.	24
Zomeworks	5

**mesa** **blueprint**  
**GAF**  
**REPRODUCTIONS**  
 drafting supplies  
 graphic supplies  
 255 / 8338

# PLASTECO SKYLIGHTS

RESIDENTIAL, COMMERCIAL  
& CUSTOM — SEE SWEET'S 7.8/PL

Now represented in New Mexico by  
 William W. Douglass, Inc.  
 Albuquerque, N. M. 87109  
 294-5326

**Your  
business  
has to  
change with  
the times,  
so why  
have walls  
that won't?**

*New  
Mexico  
Office  
Furniture*



## Steelcase Movable Walls

A wall that's only a wall is an obstacle. But a Steelcase Movable Wall System can form an office today or a conference room tomorrow or two or three work-stations the day after. In other words, it gives you unlimited flexibility in planning your office interiors. And that's a boon to any business.

6437 LINN AVE. N.E. • ALBUQUERQUE, NEW MEXICO • (505) 265-7841



*Become a participant in the revitalized*

## HISTORICAL SOCIETY of NEW MEXICO

Post Office Box 4638

Santa Fe, N. M. 87501

Name \_\_\_\_\_

Address \_\_\_\_\_

Zip \_\_\_\_\_

Annual Dues ☐ Individual \_\_\_\_\_ \$10.00 ☐ Contributing \_\_\_\_\_ \$ 40.00  
☐ Student \_\_\_\_\_ \$ 5.00 ☐ Life \_\_\_\_\_ \$1,000.00  
 in one payment

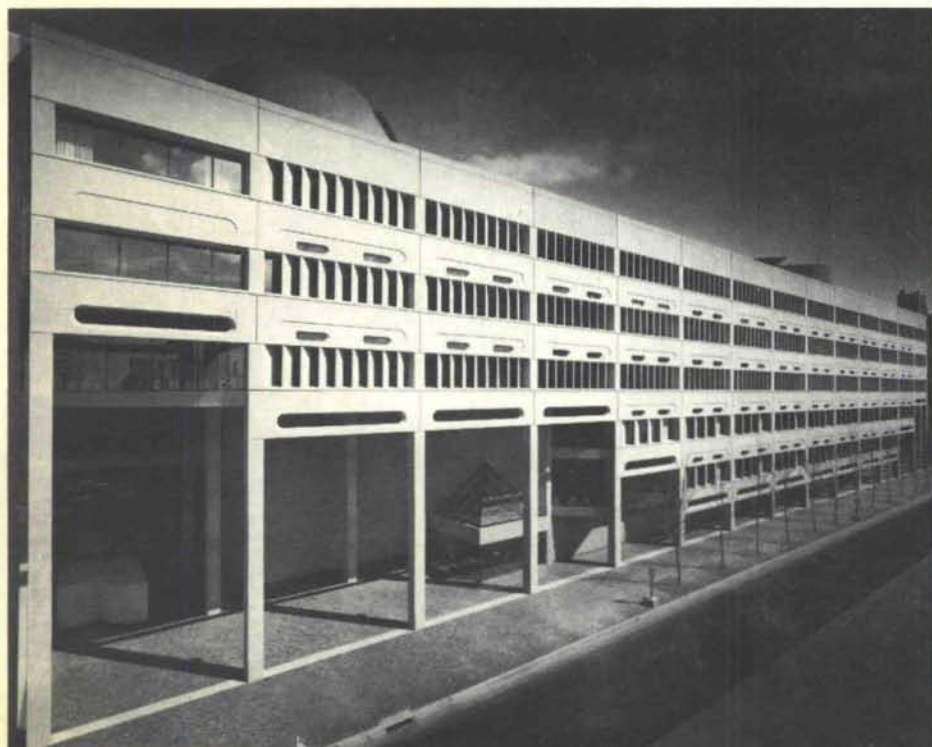
**SOCIETY MEMBERS MAY SUBSCRIBE AT REDUCED RATES TO:**

- ☐ "NEW MEXICO HISTORICAL REVIEW" \_\_\_\_\_ \$4.50 year  
 Published by the University of New Mexico @ \$6.00 year  
☐ "NEW MEXICO ARCHITECTURE" magazine \$4.00 year  
 Published by the New Mexico Society of Architects @ \$5.00 year



Bulk Rate  
U. S. Postage  
**PAID**  
Roswell, N. M.  
Permit No. 47

Vol. 17, No. 6



## ALBUQUERQUE'S **FIRST PLAZA**

A TRIBUTE TO  
THE CITY AND  
TO PRECAST  
CONCRETE

ARCHITECT — HARRY WEESE & ASSOCIATES  
CONTRACTOR — BRADBURY & STAMM-TURNER

The spectacular First Plaza, new main offices of the First National Bank in Albuquerque incorporated 900 pieces of precast concrete, all in a warm tone cement, brush blast finish.

First Plaza — an attractive part of Albuquerque's new downtown skyline.



**HYDRO CONDUIT CORPORATION**

2800 SECOND STREET, SW - ALBUQUERQUE, NEW MEXICO 87103