

CRUSHED LAVA CINDERS

Screened to Proper Size For:

- Running Tracks
- Roofing Aggregate
- Decorative Ground Cover
- Rip-Rap
- Large Landscape Boulders



ROCKY MOUNTAIN STONE COMPANY

4741 PAN AMERICAN FREEWAY, N.E.
ALBUQUERQUE 344-2611

new mexico architecture

nma

Published bi-monthly by New Mexico Society of Architects, American Institute of Architects, a non-profit organization.

Editorial Correspondence should be addressed to John P. Conron, Box 935, Santa Fe, N. M. 87501. 505 983-6948.

Editorial Policy: Opinions expressed in all signed articles are those of the author and do not necessarily represent the official position of the publishing organization.

No responsibility will be assumed by the editor or publishing organization for unsolicited contributions. Return postage should accompany all unsolicited manuscripts.

Subscriptions: Write Circulation, New Mexico Architecture, Box 7415, Albuquerque, N. M. 87104. Single copy \$1.00. Yearly subscription \$5.00.

Change of address: Notifications should be sent to New Mexico Architecture, Box 7415, Albuquerque, N. M. 87104 at least 45 days prior to effective date. Please send both old and new addresses.

Advertising: Send requests for rates and information to New Mexico Architecture, Robert G. Mallory, 115 Amherst Drive S.E., Albuquerque, N. M. 87106. 505 255-8668.

Additional copies of NMA available from John P. Conron AIA/FAID, P. O. Box 935, Santa Fe, N. M. 87501.

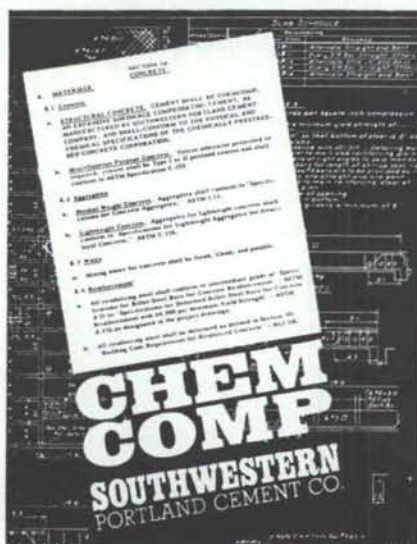
ChemComp doesn't shrink from any job.

When you want minimized shrinkage cracking for absolute structural integrity, durability, and beauty, the concrete answer is ChemComp, Southwestern Portland's expansive cement. ChemComp is finished cement, not an additive or partial replacement. It greatly reduces maintenance and repair costs due to cracks. It generally eliminates the need for waterproof membranes or surface sealants. Check ChemComp's many advantages.

WRITE FOR FREE BROCHURE:
BOX 392, EL PASO, TEXAS 79943.



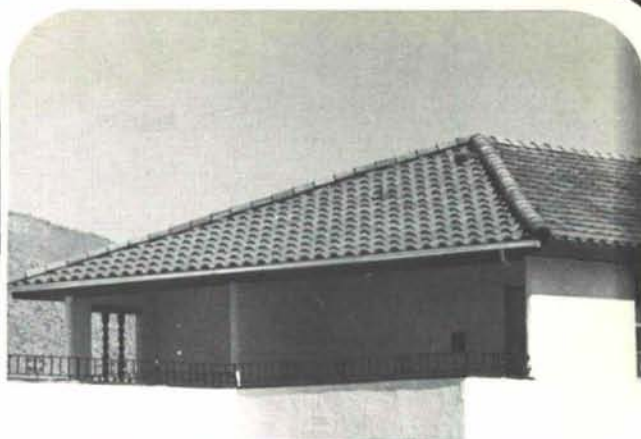
SOUTHWESTERN PORTLAND CEMENT COMPANY
MAKERS OF EL TORO CEMENTS / EL PASO, AMARILLO, ODESSA



PRINTED BY
HALL-POORBAUGH PRESS, ROSWELL, N. M.

INDEX OF FIRMS who make possible the publication of NMA and the page upon which their message may be found:

AIA Form Service	25
Albuquerque Gravel Products	25
Albuquerque Testing Laboratory	23
Architectural Systems Co.	23
Artesanos Imports Co.	6
Aztec International	CS
Builders Block & Stone Co. Inc.	22
Century Roof Tile, Inc.	27
Cook's Building Specialties	23
Crego Block Co., Inc.	2
Customercraft Fixtures	24
Design Interiors	22
Goodrich Roofing Co.	24
Hanley Paint Mfg. Co., Inc.	6
Hydro Conduit Corporation	28
James & Cooke, Inc.	24
Keers, Inc.	5
Mason Contractors Assn. of N.M.	8
McGill Co., Inc., Geo. B.	4
McGill Trus Joist	22
New Mexico Office Furniture	4
Prestressed Concrete Products, Inc.	5
Rocky Mountain Stone Co.	26
San Vallé Tile Kilns	10
Southern Union Gas Co.	25
Southwestern Portland Cement Co.	26
Southwest Vermiculite Co.	7
Spectra-Glaze	24
Stryco Sales, Inc.	23
Summit Pressed Brick & Tile Co.	6
Unistrut New Mexico	25
University Bookstore	7
Wellborn Paint Mfg. Co.	4



For That Extra Touch of Creativity...

Glazed Mission Roof Tile

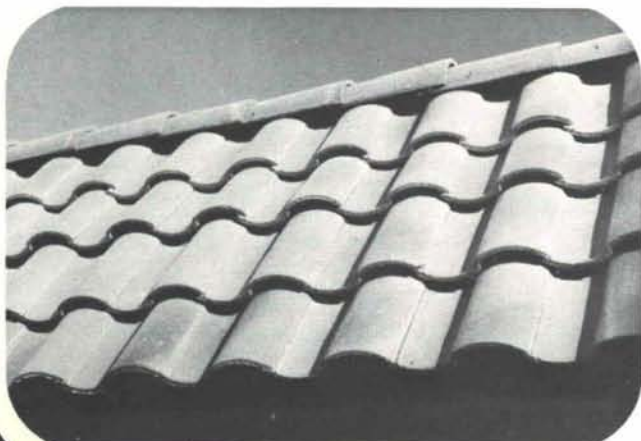
It's more than color...it's glorious color.

It's been around for centuries, but because of high costs in the past, Glazed Mission Roof Tile has been relatively rare in this part of the country. No longer...because it's manufactured here.

This means anything you can dream up on your drawing board, you can do with Mission Roof Tile. From over-all patterns to blends to colors to styles. Anything.

The next time you're thinking about design, ask about our new technology and new versatility.

Yes, it's "something different" and it sets the home, building or project you designed apart. No matter how much you use it, it has a distinctive personality. Give your design that extra touch of creativity. For more information...



Century
roof tile, inc.
(505) 843-6677
Sales Representatives

Geo. B. McGill Co., Inc.
3530 - C Pan American N.E.
Albuquerque 87107
Phone 505/345-4501

McGill - Stephens, Inc.
4100 Rio Bravo St., Suite 320
El Paso, Texas 79902
Phone 915/544-4505

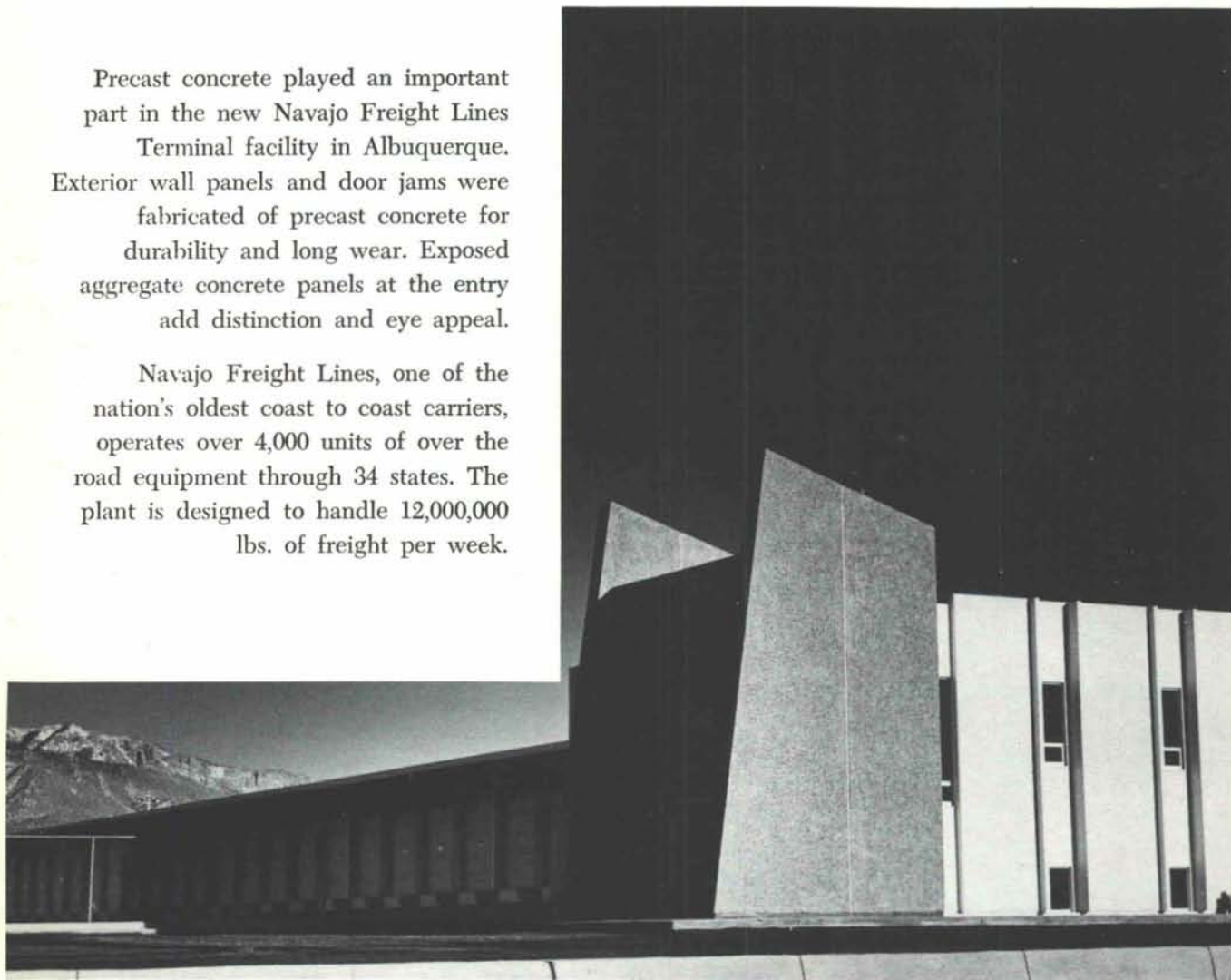
Bulk Rate
U. S. Postage
PAID
Roswell, N. M.
Permit No. 47

Vol. 17, No. 2

a sign of the times IN TRANSPORTATION

Precast concrete played an important part in the new Navajo Freight Lines Terminal facility in Albuquerque. Exterior wall panels and door jams were fabricated of precast concrete for durability and long wear. Exposed aggregate concrete panels at the entry add distinction and eye appeal.

Navajo Freight Lines, one of the nation's oldest coast to coast carriers, operates over 4,000 units of over the road equipment through 34 states. The plant is designed to handle 12,000,000 lbs. of freight per week.



KRUGER, LAKE and ASSOCIATES, Architects & Engineers

THE BANES COMPANY Contractor



HYDRO CONDUIT CORPORATION

2800 SECOND STREET, SW - ALBUQUERQUE, NEW MEXICO 87103