

In the next issue of NMA

In the March/April **nma** will be the complete roster of the members of the three New Mexico Chapters of the American Institute of Architects.

Also, of course, the roster of the members of the New Mexico Chapter, American Institute of Interior Designers, and the New Mexico members of the National Society of Interior Designers.

Additional copies of **nma** are available from John P. Conron AIA/AID, P. O. Box 935, Santa Fe, New Mexico 87501



new mexico architecture **nma**

Published bi-monthly by New Mexico Society of Architects, American Institute of Architects, a non-profit organization.

Editorial Correspondence should be addressed to John P. Conron, Box 935, Santa Fe, N. M. 87501. 505 983-6948.

Editorial Policy: Opinions expressed in all signed articles are those of the author and do not necessarily represent the official position of the publishing organization.

No responsibility will be assumed by the editor or publishing organization for unsolicited contributions. Return postage should accompany all unsolicited manuscripts.

Subscriptions: Write Circulation, New Mexico Architecture, Box 7415, Albuquerque, N. M. 87104. Single copy 50c. Yearly subscription \$2.50.

Change of address: Notifications should be sent to New Mexico Architecture, Box 7415, Albuquerque, N. M. 87104 at least 45 days prior to effective date. Please send both old and new addresses.

Advertising: Send requests for rates and information to New Mexico Architecture, Robert G. Mallory, 115 Amherst Drive S.E., Albuquerque, N. M. 87106. 505 255-8668.

Additional copies of **NMA** available from John P. Conron AIA/FAID, P. O. Box 935, Santa Fe, N. M. 87501.

PRINTED BY

HALL-POORBAUGH PRESS, ROSWELL, N. M.

INDEX OF FIRMS who make possible the publication of **NMA** and the page upon which their message may be found:

Albuquerque Gravel Products	28
Albuquerque Testing Laboratory	29
Builders Block & Stone Co., Inc.	4
Century Roof Tile, Inc.	31
Cook's Building Specialties	27
Crego Block Co., Inc.	2
Custom Electrical Products, Inc.	7
Design Interiors, Inc.	6
El Rey Stucco Co.	6
Hanley Paint Mfg. Co., Inc.	26
Hydro Conduit Corporation	32
Keers, Inc.	7
Mason Contractors Assn. of N.M.	8
McGill Co., Inc., Geo. B.	27
McMillan & Associates	28
Neumark Co., Inc.	29
Overhead Door Co. of Albuquerque ..	28
Plasco, Inc., Albuquerque	26
Prestressed Concrete Products, Inc. ..	4
Rocky Mountain Stone Co.	29
Santa Fe Builders Supply Co.	29
Spectra Glaze	28
Southern Union Gas Co.	26
Southwestern Portland Cement Co.	30
Southwest Vermiculite Co.	5
Stryco Sales, Inc.	27
Summit Pressed Brick & Tile Co.	10
Unistrut New Mexico	26
University Book Store	5
Wellborn Paint Mfg. Co.	6

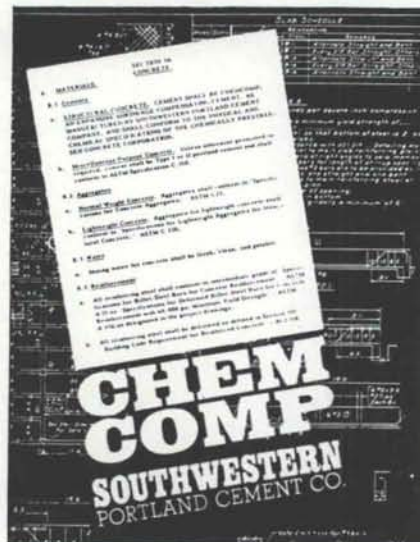
ChemComp doesn't shrink from any job.

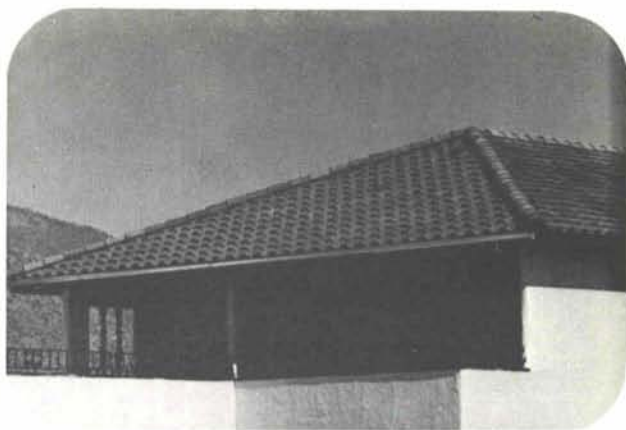
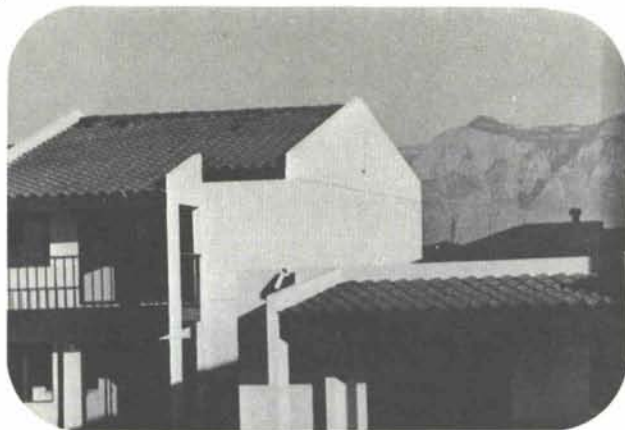
When you want minimized shrinkage cracking for absolute structural integrity, durability, and beauty, the concrete answer is ChemComp, Southwestern Portland's expansive cement. ChemComp is finished cement, not an additive or partial replacement. It greatly reduces maintenance and repair costs due to cracks. It generally eliminates the need for waterproof membranes or surface sealants. Check ChemComp's many advantages.

WRITE FOR FREE BROCHURE:
BOX 392, EL PASO, TEXAS 79943.



SOUTHWESTERN PORTLAND CEMENT COMPANY
MAKERS OF EL TORO CEMENTS / EL PASO, AMARILLO, ODESSA





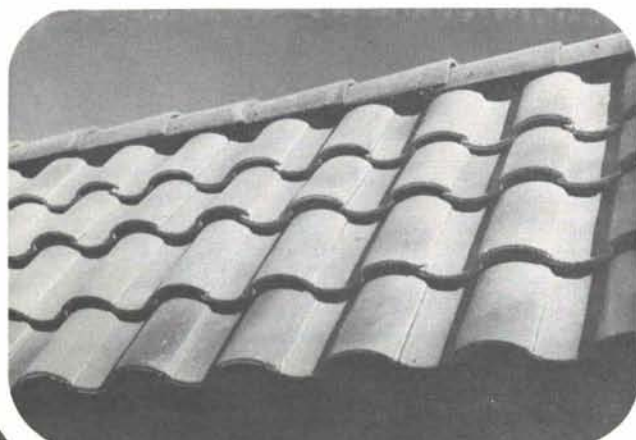
Glazed Concrete Roof Tile

Anything you can dream up on your drawing board, you can do with concrete roof tile. Anything.

Over-all patterns. Blends. Colors. Styles.

The ancient art of concrete roof tile has been changing. It's really a new technology with new versatility. New methods. New materials. Many of its applications today are truly innovative. If you've had the opportunity to talk with a roofing contractor recently, you have an idea of what we mean.

Your prospects will recognize it: that "something different" that will set their home, building, or project apart. Give it a distinctive personality that will express their individual taste. You can be as creative as you like. Glazed concrete roof tile is readily available locally from



Century
roof tile, inc.

Write or call today for full details.

130 Alvarado NE

Albuquerque, New Mexico 87108

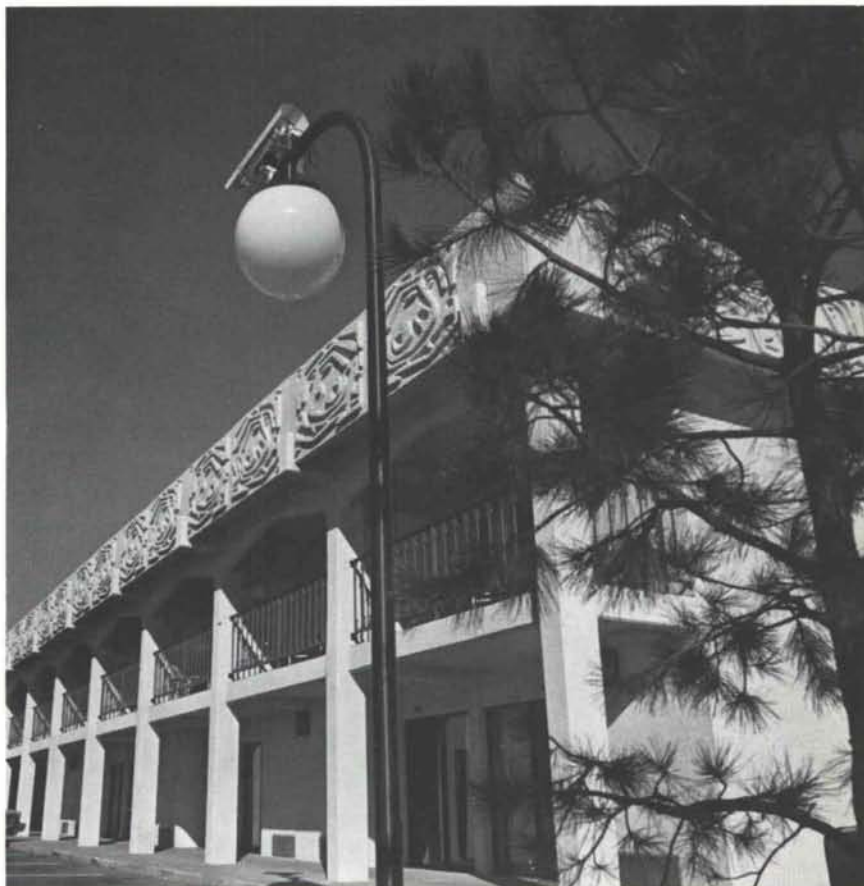
(505) 266-8601

Bulk Rate
U. S. Postage
PAID
Roswell, N. M.
Permit No. 47

Vol. 16, Nos. 1 & 2

PRECAST CONCRETE PANELS

Imagination in Concrete



ARCHITECTS
FLATOW, MOORE, BRYAN & FAIRBURN

The recently completed 100 unit addition to the Four Seasons Motor Inn in Albuquerque again features the beauty of abstract design precast concrete panels. One hundred fifty-seven decorative panels were used in the fascia, entry and balconies of the addition to exactly match those of the original structure.

The additional facilities include the new Delfinos Restaurant, a large indoor Japanese garden and several new meeting rooms.

Ask Hydro Conduit Corporation about the exciting uses of precast concrete.



HYDRO CONDUIT CORPORATION

2800 SECOND STREET, SW - ALBUQUERQUE, NEW MEXICO 87103