



To the person who has everything . . . . .

send a gift subscription to NEW MEXICO ARCHITECTURE  
 . . . . . And it is only \$2 50 for a one year subscription

A gift card will be sent in your name. Send all information (and money) to:  
 New Mexico Architecture, Box 7415, Albuquerque, New Mexico 87104

## new mexico architecture

nma

Published bi-monthly, by the New Mexico Society of Architects American Institute of Architects, a non-profit organization, Box 7415, Albuquerque, N. M. 87104

**Editorial Correspondence:** All correspondence should be addressed to John P. Conron, P. O. Box 935, Santa Fe, New Mexico 87501.

**Editorial Policy:** Opinions expressed in all signed articles are those of the author and do not necessarily represent the official position of the New Mexico Society of Architects, A.I.A.

No responsibility will be assumed by the editor or publishing organization for unsolicited contributions. Return postage should accompany all unsolicited manuscripts.

**Subscriptions:** Write Circulation New Mexico Architecture, Box 7415, Albuquerque, N. M. 87104. Single copy 50c. Yearly subscription \$2.50.

**Change of address:** Notifications should be sent to New Mexico Architecture, Box 7415, Albuquerque, N. M. 87104 at least 45 days prior to effective date. Please send both old and new addresses.

**Advertising:** Requests for rates and information relating to advertising should be addressed to W. M. Brittelle, Sr., Box 7415, Albuquerque, N. M. 87104, or Rob't. G. Mallory, 115 Amherst Dr. S. E., Albuquerque, N. M. 87106.

## INDEX TO FIRMS

Cooperating in the public relation program of the NMA magazine, making possible its publication and the page upon which their message may be found.

Aardal Distributors, Inc. . . . . 18  
 Albuquerque Blueprint Company . . . . . 24

Albuquerque Gravel Products Company	5
Albuquerque Lumber Company	5
Albuquerque Testing Laboratory	18
Atlas Building Products Co.	8
Baldrige Lumber Company	24
Builders' Block & Stone Co., Inc.	25
Cast-Crete, Inc.	6
Design Interiors, Inc.	6
El Rey Stucco Co.	24
Featherlite Tile Company	27
Frontier Roofing Co.	27
Georgia-Pacific Corporation	6
Goodrich Roofing Co.	2
Hanley Paint Mfg. Co., Inc.	8
Harris Glass Co.	8
Hydro Conduit Corp.	28
Jaynes Corporation	18
Kinney Brick Co., Inc.	5
Landes, Zachary and Peterson Co.	4
Lumber Merchandisers Association	25
McGill, George B.	4
McMurtry Paint and Glass	5
New Mexico Marble and Tile Co.	18
Prestressed Concrete Products, Inc.	27
Public Service Co. of New Mexico	2
Santa Fe Builders' Supply Co.	4
Southern Union Gas Co.	25
Southwestern Vermiculite Co.	22
Stryco Sales, Inc.	24
University Book Store	22
Wellborn Home Decorating Center	2

# SOFTENING THE WEATHER... WITH CONCRETE



ARCHITECTS—FLATOW-MOORE-BRYAN AND FAIRBURN  
CONTRACTOR—LEMBKE CONSTRUCTION CO.

ENCLOSING OF THE PROMENADE SECTIONS OF THE MALL SHOPPING CENTER IN ALBUQUERQUE WAS EFFICIENTLY ACCOMPLISHED WITH PRESTRESSED CONCRETE DOUBLE TEE ROOF AND PRECAST CONCRETE SUPPORTING BEAMS AND MODIFIED DOUBLE TEE WALL SECTIONS, ALL CUSTOM MANUFACTURED BY PRESTRESSED CONCRETE PRODUCTS, INC.

**PRESTRESSED**   
**CONCRETE PRODUCTS, INC.**

1304 Menaul Blvd. N.E., Albuquerque, N.M. 87106 (505) 345-2536

Variations on a theme :

**NEW** ***Spectra-Glaze***®

**glazed masonry units  
DESIGN SERIES**

(not an alternate for  
any other material)

Your choice in color, texture,  
form, scale and pattern . . .

Select from a variety of  
scored units to reduce scale  
for as little as a nickel extra  
per block . . . Build, decorate  
and finish in a single  
operation. Thru wall,  
load bearing units elimi-  
nate expense of back-up  
wall . . . Specify

*Spectra-Glaze* glazed  
concrete units in your  
base bid to realize  
their unique  
advantages of  
design flexibility  
combined with  
lower-in-the-wall  
costs . . . Local  
delivery, world-wide.

⑤ Cataloged in SWEET'S

(R) Reg. U. S. Pat. Off.

Canada & other countries by The Burns & Russell Co.

**FEATHERLITE TILE COMPANY** P. O. Box 489, Erskine Rd.  
LUBBOCK, TEXAS 79408

Phone 809 & PO-3-8202

*Roofing and Sheetmetal Contractors*

**FRONTIER**  
**ROOFING CO.**

Corporation of Albuquerque

711 WHEELER AVE. S.E.

TEL. 243-3788

**ALBUQUERQUE, NEW MEXICO 87103**

Library  
University of New Mexico  
Albuquerque, N. M. 87106

Bulk Rate  
U. S. Postage  
**PAID**  
Roswell, N. M.  
Permit No. 47



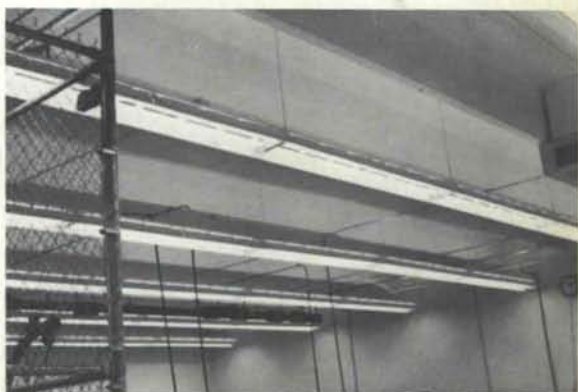
## SO MANY WAYS SUPERIOR . . . PRESTRESSED CONCRETE

THE NEW EBERLINE INSTRUMENT CORP. OFFICE AND MANUFACTURING PLANT IN SANTA FE, NEW MEXICO INCORPORATES THE FUNCTIONAL USE OF PRESTRESSED CONCRETE DOUBLE TEE ROOF AND BEAMS AND CONCRETE COLUMNS CUSTOM FABRICATED BY HYDRO CONDUIT CORP. THIS USE OF CONCRETE AFFORDS MAXIMUM CLEAR SPAN WORK AREA AND MAXIMUM FIRE RESISTANCE.



ARCHITECT — HOWARD DANA

CONTRACTOR — B & N MARINE DISTR.  
INC., ALBUQUERQUE, N. M.



**HYDRO CONDUIT CORPORATION**

2800 SECOND ST., SW • ALBUQUERQUE, NEW MEXICO 87103