

KINNEY BRICK COMPANY INC.

Manufacturers of:

- Common Brick
- Patio Brick
- Face Brick
- Roman Brick
- Norman Brick
- "SCR" Brick

Distributors for:

- Summit Brick Co.
- Acme Brick Co.
- Major Brick Co.
- Eureka Brick Co.
- Texas Clay Products
- • • • •

Samples and information upon request

Visit Our Office & Showrooms at Plant
5 miles South just off of Second Street
ALBUQUERQUE, NEW MEXICO

Phone 877-4550 P. O. Box 1804, 87103



SOUTHWESTERN ELECTRIC SHOP, INC.
Electrical Contractors

• • • • •

ARVILLE SULLINS
Manager

914 N. Linom
393-3343

Hobbs, New Mexico
88240

new mexico architecture nma

Published bi-monthly, by the New Mexico Society of Architects American Institute of Architects, a non-profit organization, 1030 San Pedro Drive, N.E. Suite 27, Albuquerque, N. M. 87110

Editorial Correspondence: All correspondence should be addressed to John P. Conron, P. O. Box 935, Santa Fe, New Mexico 87501.

Editorial Policy: Opinions expressed in all signed articles are those of the author and do not necessarily represent the official position of the New Mexico Society of Architects, A.I.A.

No responsibility will be assumed by the editor or publishing organization for unsolicited contributions. Return postage should accompany all unsolicited manuscripts.

Subscriptions: Write Circulation N.M.A. P. O. Box 18, University Station, Albuquerque, New Mexico 87106. Single copy 50c. Yearly subscription \$2.50. Second class postage paid at Roswell, New Mexico.

Change of address: Notifications should be sent to N.M.A., Box 18, University Station, Albuquerque, N. M. 87106 at least 45 days prior to effective date. Please send both old and new addresses.

Advertising: Requests for rates and information relating to advertising should be addressed to W. M. Brittelle, Sr., 1030 San Pedro Drive, N. E. Suite 27, Albuquerque, N. M. 87110, or Rob't G. Mallory, 115 Amherst Dr. S. E. 87106.



Weyerhaeuser 7/16 CRAFTWALL prefinished architectural paneling is unmistakable. The genuine hard wood beauty costs no more than premium 1/4" paneling. Available in lengths up to 16' CRAFTWALL paneling carries a written lifetime guarantee.



SPECIFY CRAFTWALL

Weyerhaeuser Architectural Specialty Dealer

ALBUQUERQUE

1881

Lumber COMPANY

1968

3825 Edith, N.E.

Phone 345-2511

INDEX TO FIRMS

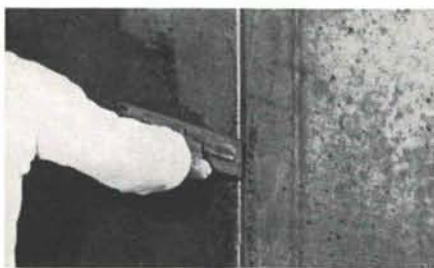
Cooperating in the public relation program of the NMA magazine, making possible its publication and the page upon which their message may be found.

Albuquerque Gravel Products	4
Albuquerque Lumber Co.	18
Albuquerque Testing Laboratory	17
Architectural Carpet Consultants	12
Atlas Building Products Co.	6
Builders Block & Stone Co., Inc.	7
Crego Block Co., Inc.	2
Design Interiors	4
Featherlite Tile Company	4
Frontier Roofing Co.	12
Hanley Paint Mfg. Co. Inc.	12
Hydro Conduit Corp.	20
Keyson Applied Coating, Inc.	16
Kinney Brick Company, Inc.	18
Lath and Plaster Supply Co.	5
Lumber Merchandisers Association	16
McGill, George B.	14
New Mexico Marble and Tile Co.	14
New Mexico Pipe Trades	4
Otto, Edgar D. & Sons, Inc.	16
Prestressed Concrete Products, Inc.	5
Southern Union Gas Company	5
Southwest Electric Shop, Inc.	18
Southwest Vermiculite Co.	8
Stryco Sales, Inc.	14
University Book Store	8
Wellborn Paint Mfg. Co.	19
Whiting Co., Inc., Donald G.	6

how would you finish this concrete?

STOP RUBBING CONCRETE!

finish and waterproof at ½ the cost with THORO SYSTEM PRODUCTS



BEFORE



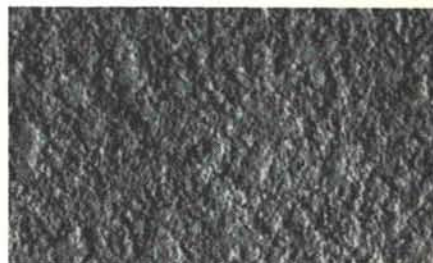
AFTER



BRUSH



TROWEL & FLOAT



SPRAY & FLOAT, & SPRAY

Two brush coats of THOROSEAL were applied over poured concrete walls to completely fill and seal all voids, making the surface attractive, thoroughly waterproofed, finished economically—no rubbing necessary. And, to secure a firm bond, Acryl 60 was added to the mixing water (1 part to 3 parts water) for extra strength, a lifetime of wear.

Trowel application of THOROSEAL PLASTER MIX-PLUS-ACRYL 60 was applied to precast concrete surfaces filling all voids. After the coating had set, workmen followed with a sponge and uniformly floated the surface to an even texture, waterproofing and economically finishing a modern university building.

8,000 sq. yds. of concrete were completely waterproofed with THOROSEAL PLASTER MIX in this Texas High School building. It was applied by spray, floated and then re-sprayed to insure a durable, uniform texture which contrasted to rough, exposed aggregate panels. Acryl 60 was added to mix (1 to 3 parts water) to increase the strength of the bond.

• Write for Circular #95 and specification guide #17.

DISTRIBUTED IN NEW MEXICO EXCLUSIVELY BY
PAINT MANUFACTURING COMPANY

2714 4TH STREET N.W. • PHONE 344-3558
ALBUQUERQUE, NEW MEXICO

Wellborn
PAINT MFG. CO.

Library
University of New Mexico
Albuquerque, N. M. 87106

Bulk Rate
U. S. Postage
PAID
Roswell, N. M.
Permit No. 47

YOU CAN BANK ON *PRESTRESSED CONCRETE*



ARCHITECT — LOUIS G. HESSELDEN
CONTRACTOR — EDWIN F. CILLESSEN



WHEN REALLY PERMANENT CONSTRUCTION IS
YOUR GOAL SPECIFY PRESTRESSED CONCRETE
AS IN THE SINGLE TEE ROOF SYSTEM AND FAS-
CIA PANELS ON THE NEW FIRST NATIONAL
BANK SAN MATEO BRANCH AT ALBUQUERQUE.



HYDRO CONDUIT CORPORATION

2800 SECOND ST., SW • ALBUQUERQUE, NEW MEXICO 87103