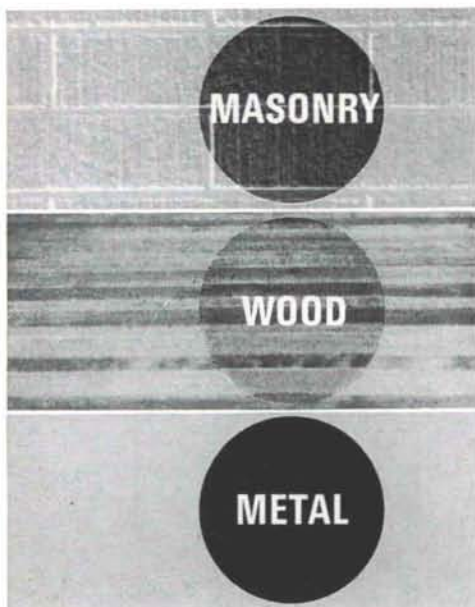


Flex-tile

An outstanding new two component coating that actually out-performs baked enamels for hardness, gloss, resistance to water, chemicals and stains

MAY BE
APPLIED
BY BRUSH,
SPRAYER
OR ROLLER



Another Quality
Product of . . .



2714 4th St., N.W.
P.O. Box 6086
Albuquerque,
New Mexico

ADVERTISING in new mexico architecture

is the positive way to put your message "professionally" to the Architect, the Engineer, the Specification Writer, the users of your products as well as the thousands of influential persons receiving the magazine who in themselves are decision makers.

Call or write our advertising director,
W. Miles Brittelle, Sr. 115 2nd Street, S.W.
Suite 200, Albuquerque, N. M. 87101

WORKING FOR: An improved business climate in the New Mexico Construction Industry



W. D. Ross
Executive Director

205 Truman N.E.
Albuquerque,

265-8703
New Mexico 87108

new mexico architecture nma

Published bi-monthly, by the New Mexico Society of Architects American Institute of Architects, a non-profit organization, 115 2nd St., S.W., Suite 200, Albuquerque, N. M. 87101.

Editorial Correspondence: All correspondence should be addressed to John P. Conron, P. O. Box 935, Santa Fe, New Mexico 87501.

Editorial Policy: Opinions expressed in all signed articles are those of the author and do not necessarily represent the official position of the New Mexico Society of Architects, A.I.A.

No responsibility will be assumed by the editor or publishing organization for unsolicited contributions. Return postage should accompany all unsolicited manuscripts.

Subscription rates: single copy 50c; one year \$2.50. Second class postage paid at Roswell, New Mexico.

Change of address: Notifications should be sent to N.M.A., Box 18, University Station, Albuquerque, N. M. 87106 at least 45 days prior to effective date. Please send both old and new addresses.

Advertising: Requests for rates and information relating to advertising should be addressed to W. M. Brittelle, Sr., 115 2nd Street, S.W., Suite 200, Albuquerque, N. M. 87101.

INDEX TO FIRMS

Cooperating in the public relation program of the NMA magazine, making possible its publication and the page upon which their message may be found.

Albuquerque Gravel Products	12	McGill, George B.	5
Albuquerque Lumber Co.	12	Miller Metal Co.	17
Albuquerque Testing Lab.	17	New Mexico Pipe Trades	18
Anderson, Clinton P.	17	N. M. Marble & Tile Co.	17
Agency, Inc.	16	O'Malley Glass & Millwork Co.	8
Atlas Structural Concrete, Inc.	4	Otto, Edgar D.	5
Builders Block	16	Prestressed Concrete	16
& Stone Co., Inc.	16	Products, Inc.	16
Customwood	6	Portland Cement Assn.	2
Manufacturing Co.	6	Public Service Co. of N. M.	8
Design Interiors	8	Southern Union Gas Co.	5
Executone of New Mexico	14	S. W. Electric Shop, Inc.	14
Featherlite Tile Company	12	S. W. Spanish Craftsman	4
Hanley Paint Mfg. Co., Inc.	12	Southwest Vermiculite Co.	6
Hydro Conduit Corp.	20	Stryco Sales, Inc.	17
Idealite	19	University Book Store	14
Kinney Brick Co., Inc.	14	Allied Supply Co.	14
Lumber Merchandise Assn.	15	Wellborn Paint Mfg., Co.	18

an example of how

IDEALITE

opens up a new
era of expression for
architects/engineers
where soil problems exist

The loose, deep sand at the building site of the new Fort Morgan High School gave very low bearing value to the soil. Therefore, two things had to be done. First, through vibration and compaction, the relative density of the soil was increased. Second, Idealite lightweight concrete was selected as the primary construction material to reduce the weight of the structure.

The design utilized four structural systems, all post-tensioned: 1) two-way waffle slab; 2) one-way joists and one-way zee type sections; 3) folded plates; and 4) haunched slabs.

Because of its lighter weight and maximum strength, Idealite permitted the large clear span design. The library is a 65' x 90' clear span area and the auditorium has 90' spans with the balcony supported by two post-tensioned Idealite concrete channel frames to eliminate the need for columns.

When you are considering the construction of a building, Idealite lightweight concrete offers many advantages – superior insulating properties, low absorption and low shrinkage, up to 30% lighter weight without sacrifice of strength.

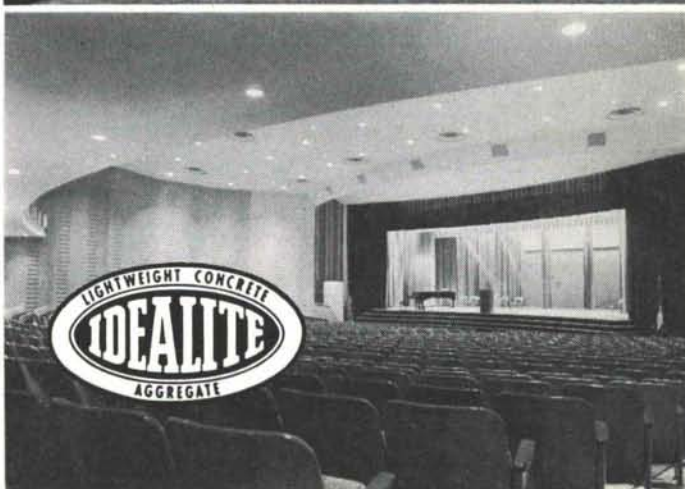
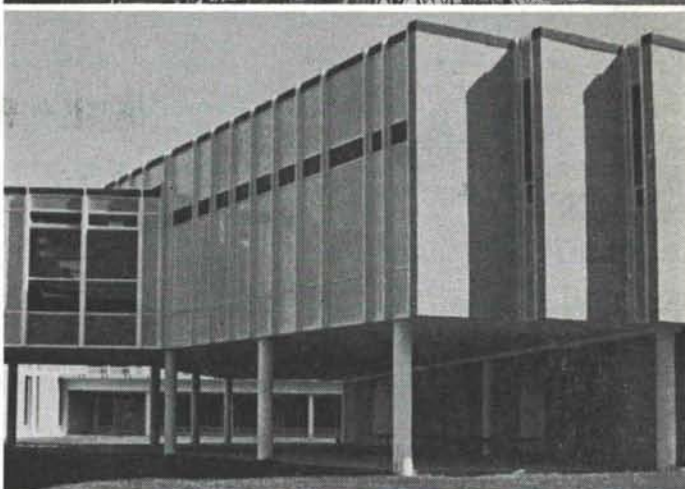
Idealite lightweight concrete makes possible buildings that are higher, spans that are wider, designs that are handsomer.

Architect, Wheeler & Lewis; Structural Engineer, Russ Kostroski

IDEALITE

*Producers of Idealite Lightweight Aggregate for
Concrete and Concrete Products*

821 17th Street • Phone 534-5144 • Denver, Colorado 80202



Lillian Dolde, Vice-President
Albuquerque, National Bank
Albuquerque, N.M. 87101

Bulk Rate
U. S. Postage
PAID
Roswell, N. M.
Permit No. 47

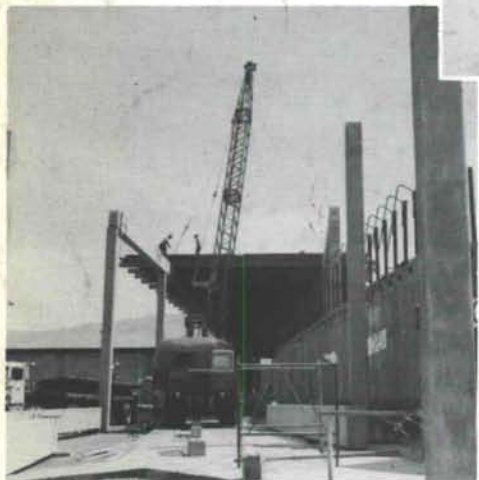


PRESTRESSED CONCRETE . . .

the answer to many needs



PRESTRESSED CONCRETE
SINGLE TEES AND BEAMS
FORM "THE MALL" AT
INDIAN SCHOOL ROAD AT
MENAUL BLVD. IN
ALBUQUERQUE.
ANOTHER ATTRACTIVE USE OF
VERSATILE CONCRETE.



ARCHITECT
FLATOW — MOORE — BRYAN & FAIRBURN

CONTRACTOR
LEMBKE CONSTRUCTION CO.



HYDRO CONDUIT CORPORATION

2800 SECOND ST., SW • ALBUQUERQUE, NEW MEXICO 87103