

COMMON
BRICK
FACE
BRICK

HOLLOW
STRUCTURAL
TILE
SCR and HOLLOW
BRICK

distributors for

acme
BRICK COMPANY

samples & literature
on request

**KINNEY BRICK
COMPANY, INC.**

P. O. Box 86
Ph. 877-4550

Office at Brick & Tile Works
5 Miles South on Second Street
Albuquerque, New Mexico

Roofing by **LYDICK**

A good name in roofing for over 70 years

- ROOFING: Composition, Asbestos, Tile, Slate
- BUILT-UP: Tar and Gravel, Asphalt
- CRUSHED MARBLE: White and Colors
- ROOF DECKS: Gypsum, Steel and
Lightweight Concrete decks
- CORRUGATED ASBESTOS and ASBESTOS SIDING
- SHEET METAL WORK
- HEATING and AIR CONDITIONING

LYDICK ROOFING COMPANY

— 247-0401 —

1625 Williams S.E.

Albuquerque, N. M.

**NEW
MEXICO
MARBLE
AND TILE
CO.**

announces



the addition of

ELGIN

for creative architecture



BUTLER

Elgin Butler Structural
Ceramic Glazed Facing
Tile offers enduring
beauty in 22 wonderful
colors. With Elgin Butler
Glazed Tile you will
meet all requirements for
quality, permanence, easy
maintenance, sanitation
and economy.

NEW MEXICO MARBLE AND TILE CO.

414 Second St., S.W.
Albuquerque, N. M.
P. O. Box 834
Phone 245-5541

new mexico architecture **nma**

Published bi-monthly, by the New Mexico Society of Architects
American Institute of Architects, a non-profit organization, 2745-A
San Mateo Blvd. N.E., Albuquerque, N. M. 87110.

Editorial correspondence: All correspondence should be addressed to
John P. Conron, P. O. Box 935, Santa Fe, New Mexico.

No responsibility will be assumed by the editor or publishing organ-
ization for unsolicited contributions. Return postage should accom-
pany all unsolicited manuscripts.

Advertising correspondence: Requests for information and other cor-
respondence should be addressed to W. M. Brittelle, Sr., 2745-A
San Mateo Blvd. N.E., Albuquerque, N. M. 87110.

Change of address: Notifications should be sent to N.M.A., Box 18,
University Station, Albuquerque, N. M., at least 45 days prior to
effective date. Please send both old and new addresses.

Subscription rates: single copy 50c; one year \$2.50. Second class
postage paid at Roswell, New Mexico.

Editorial Policy: Opinions expressed in all signed articles are those
of the author and do not necessarily represent the official position
of the New Mexico Society of Architects, A.I.A.

INDEX OF ADVERTISERS

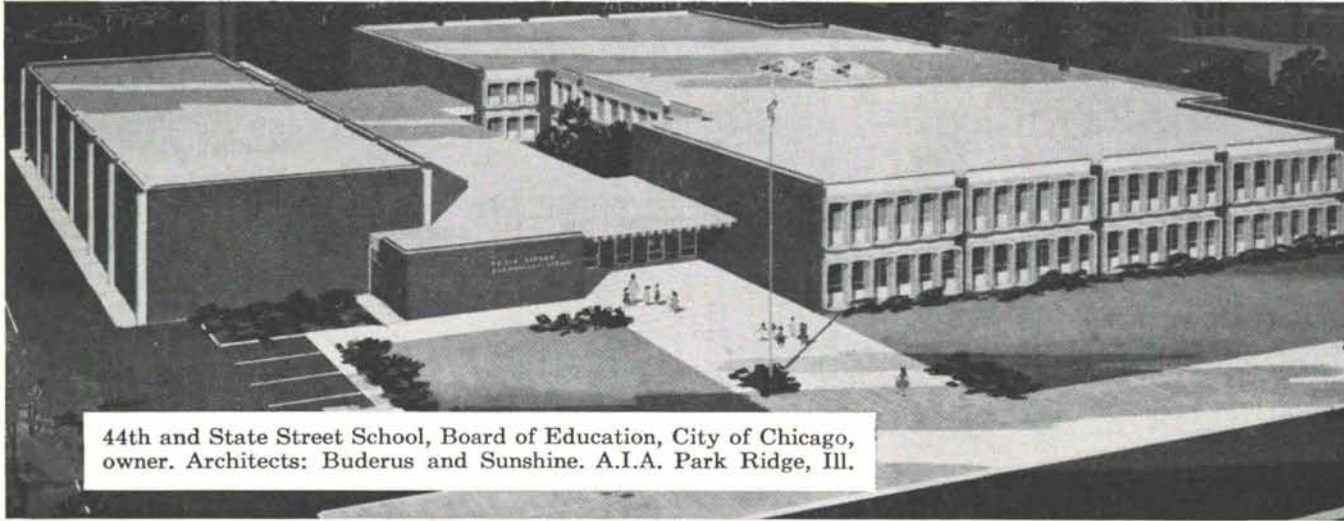
Albuquerque Blueprint Company	25
Albuquerque Gravel Products Company	20
Albuquerque Lumber Co.	7
Albuquerque Testing Laboratory	20
American Furniture	22
Apache Lumber Co.	14
Atlas Building Products	7
Broadway Lumber Co.	25
Builder's Block & Stone Co., Inc.	24
Crego Block Co., Inc.	4
Culligan Water Conditioning, Inc.	22
Cummings Co., Inc., Don J.	24
Hanley Paint Mfg. Co., Inc.	20
Hydro Conduit Corporation	5
Idealite	2
Jay Gear, Inc.	22
Kinney Brick Company, Inc.	26
Lydick Roofing Co.	26
Miller & Smith Mfg. Co., Inc.	4
Monarch Tile Manufacturing, Inc.	6
Mountain States Telephone	5
New Mexico Marble & Tile	26
New Mexico Pipe Trades Industry	6
Office Interiors	21
Otto, Edgar & Sons, Inc.	28
Portland Cement Association	27
Prestressed Concrete Products, Inc.	24
Southwest Vermiculite Co.	20
Southern Union Gas Co.	14
Stryco Sales, Inc.	25
United States Gypsum	8
Welch-Erwin	21
Wellborn Paint Mfg. Co.	25

curtain wall joints

a.i.a. file: 4a

Prepared as a service to architects by Portland Cement Association

clip along dotted line



44th and State Street School, Board of Education, City of Chicago, owner. Architects: Buderus and Sunshine. A.I.A. Park Ridge, Ill.

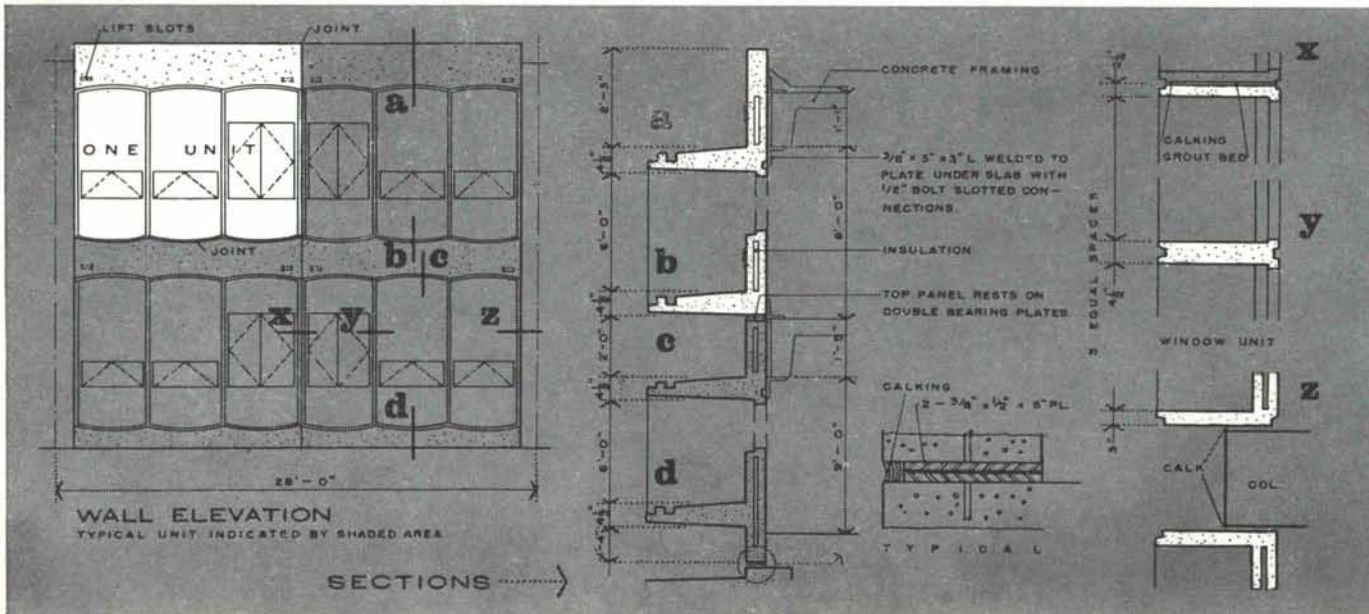
If concrete were free to deform, normal volume changes would be of little consequence, but since concrete is usually restrained by foundations, spandrels, reinforcement or connectors, significant stresses may develop. This is particularly true when tension is developed; thus restrained contractions causing tensile stresses in concrete are usually more important than restrained expansions which cause compressive stresses.

The adjoining details illustrate an excellent jointing method which allows for movement after the units are placed. The double bearing plates at the floor line and the 2-way slotted connectors at the spandrels insure free movement.

Thermal expansion and contraction of concrete vary with factors such as aggregate type, richness of mix, water-cement ratio, temperature range, concrete age and relative humidity. Write for additional free information. (U.S. and Canada only.)

Some helpful criteria to reduce volume changes

1. Limit the water content of concrete to the minimum required for proper placement.
2. Avoid conditions that increase the water demand of concrete such as high slumps and high concrete temperatures.
3. Use the largest total amount of aggregate in the mix that is practical.
4. Use the largest maximum size coarse aggregate to fit the job conditions.
5. Use fine and coarse aggregates that exhibit low shrinkage characteristics when used in concrete.
6. Avoid use of aggregates that contain an excessive amount of clay.
7. Use steam curing when applicable.



PORTLAND CEMENT ASSOCIATION

5301 Central N.E., Albuquerque, N. M. 87108

An organization to improve and extend the uses of concrete

University of New Mexico Library
University of New Mexico
Albuquerque, N.M.

Bulk Rate
U. S. Postage
PAID
Roswell, N. M.
Permit No. 47

Schools

Hayes Embudo School
Louis G. Hesseldon,
Architect



Homes

W. Randall Fowler,
Architect



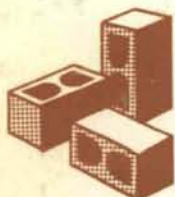
Churches

Bethany Evangelical
Covenant Church
Richard P. Milner,
Architect



Apts.

Arthur W. Dekker,
Architect



RMU

THE IDEAL MASONRY UNIT

Available in Whiteshell, Rouge, Pink
and Alamo Buff colors

• LOWER COST PER SQUARE FOOT

• NO MAINTENANCE

• REDUCED CONSTRUCTION TIME

• LASTING TEXTURED BEAUTY

• FIRE SAFE

• LOWER HEATING & COOLING COSTS

FOR ADDITIONAL INFORMATION
CONCERNING R. M. U. AND ITS APPLI-
CATIONS CALL OR WRITE:

EDGAR D. OTTO & SON, INC.

2700 Second Street, Southwest • P.O. Box 387 • Albuquerque, New Mexico • Phone 243-6721

LAVALITE Concrete Masonry Units • **EXTRALITE** Concrete Masonry Units

DENS-BLOCK Concrete Masonry Units • **Spectra-Glaze** Structural Masonry Units **RMU** RESIDENTIAL MASONRY UNIT

Cast Stone and Pre-Cast Concrete • Masonry Wall Reinforcement

Inlai Exposed Aggregate Facing Panels • **DESERT CANYON STONE**