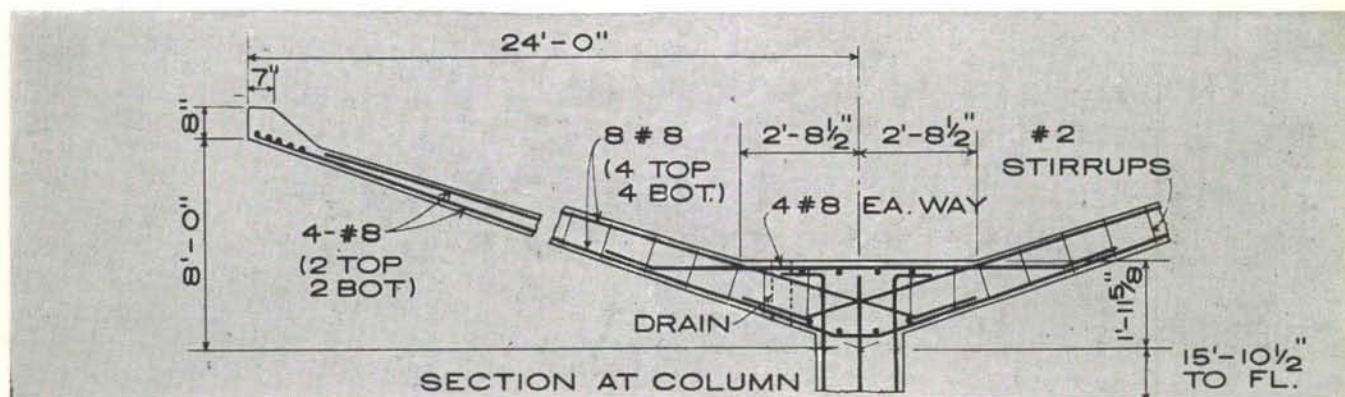


FOR STRUCTURES...
MODERN
concrete

*Skinner Manufacturing Co., Omaha, Nebraska. Engineer: Nance Engineering, Inc., Omaha.
Architect: Steele, Sandham & Weinstein, Omaha. Contractor: Peter Kiewit Sons' Co., Omaha.*

\$1.00 per sq. ft. roofs food plant with HP shells of modern concrete



24 inverted concrete "umbrellas," each supported by a single column, form the roof of the new Skinner Macaroni Manufacturing plant in Omaha, Nebraska. At an estimated cost of \$1.00 per square foot, it was the economical answer to the special problems involved in designing a plant for making macaroni.

With flour dust everywhere, no dust collecting surfaces could be allowed. Only concrete could give the smooth, dense surface needed—and stand up to the high humidity that ruled out the use of plaster.

And the widely spaced columns of the hyperbolic shells permit efficient placing of machinery and processing lines. Although the nominal height is 16 feet, the curves of the shells give room for special processing equipment that requires greater clearance. All piping and wiring run in the high portions of the roof where they won't encroach on design clearance.

More and more, architects and engineers are finding that concrete is the one completely versatile building material for structures of every type and size.

UHM Library
University of NM
Albuquerque, New Mexico

506

Bulk Rate
U. S. Postage
PAID
Roswell, N. M.
Permit No. 47

RMU

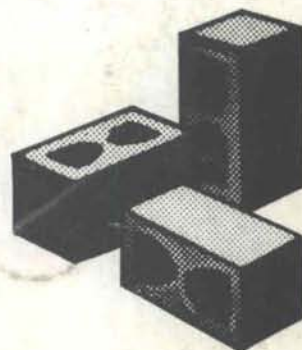
RESIDENTIAL MASONRY UNITS



Look for the masonry blocks on today's market. They are the only ones that are designed to be used in a variety of applications. They are the only ones that are designed to be used in a variety of applications. They are the only ones that are designed to be used in a variety of applications.

RMU

*Residential masonry units.
A complete new method
of construction affording
beauty, versatility and economy
in a maintenance free -
color fast product.*



Inlai

PRE-CAST CONCRETE EXPOSED AGGREGATE FACING PANEL



A PRACTICAL APPROACH
ARCHITECTURAL STYLING
AND BEAUTY IMPARTING
AND ECONOMICAL, TRIMMING
TO BUILDING SURFACES.

INLAI

*Pre-cast concrete exposed
aggregate facing panels
available in an unlimited
selection of color
and texture.*

DESERT CANYON STONE

A NEW DIMENSION IN QUALITY CONSTRUCTION MATERIALS



DESERT CANYON STONE is a new dimension in quality construction materials. It is a manmade stone designed for use as a dress veneering material lending durability and textured beauty to all applications.

DESERT CANYON STONE

*A manmade stone designed
for use as a dress veneering
material lending durability
and textured beauty
to all applications.*

Spectra-Glaze

SPECIFY



GLAZED
STRUCTURAL
CONCRETE
MASONRY
UNITS

SPECTRA GLAZE®

*Glazed structural concrete
masonry units affording
the economy inherent
in block construction.*

LAVALITE®

REGISTERED U. S. PATENT OFFICE

Lavalite concrete masonry units conform to the exacting requirements of federal, state and municipal specifications. Lavalite concrete products are available in over 350 different sizes, shapes, colors and kinds, affording a proven fire resistance rating — a stable paint surface — certified moisture stability and compressive strength — resulting in a superior building product — providing minimum cost per square foot and unequalled appearance longevity — all at a price consistent with quality.

All Lavalite concrete masonry units are manufactured by the exclusive unimex autoclaved system.

**A SPECIALIZED
PRODUCT FOR
EVERY BUILDING NEED**

As advertised in Sept., May, March, and Nov., N. M. A. Magazine.



EDGAR D. OTTO & SON, INC.

2700 Second Street, Southwest • P.O. Box 387 • Albuquerque, New Mexico • Phone 243-6721